



# Dual Induction Log

DIGITAL LOG (785) 625-3858

15-141-20427-00-00

API No.

Company **Bruce Oil Company, LLC**

Well **Wendall #1**

Field **Kill Creek**

County **Osborne** State **Kansas**

Location **S2 N2 NW NE  
500' FNL / 1980' FEL**

Sec: **22** Twp: **8S** Rge: **14W**

Other Services  
CNL / CDL

Permanent Datum **Ground Level** Elevation **1899**  
 Log Measured From **Kelly Bushing** 5 Ft. Above Perm. Datum  
 Drilling Measured From **Kelly Bushing**

Elevation  
K.B. 1904  
D.F. 1899  
G.L. 1899

Date	6/9/2011
Run Number	One
Depth Driller	3200
Depth Logger	3197
Bottom Logged Interval	3196
Top Log Interval	800
Casing Driller	8.625 @ 812
Casing Logger	812
Bit Size	7.875
Type Fluid in Hole	Chemical
Salinity, ppm CL	4600
Density / Viscosity	9.1 53
pH / Fluid Loss	11.0 6.4
Source of Sample	Flowline
Rm @ Meas. Temp	0.90 @ 75
Rmf @ Meas. Temp	0.68 @ 75
Rmc @ Meas. Temp	1.22 @ 75
Source of Rmf / Rmc	Charts
Rm @ BHT	0.61 @ 110
Operating Rig Time	2 Hours
Max Rec. Temp. F	110
Equipment Number	17
Location	Hays
Recorded By	R. Barnhart
Witnessed By	Bob Peterson

<<< Fold Here >>>

All interpretations are opinions based on inferences from electrical or other measurements and we cannot and do not guarantee the accuracy or correctness of any interpretation, and we shall not, except in the case of gross or willful negligence on our part, be liable or responsible for any loss, costs, damages, or expenses incurred or sustained by anyone resulting from any interpretation made by any of our officers, agents or employees. These interpretations are also subject to our general terms and conditions set out in our current Price Schedule.

### Comments

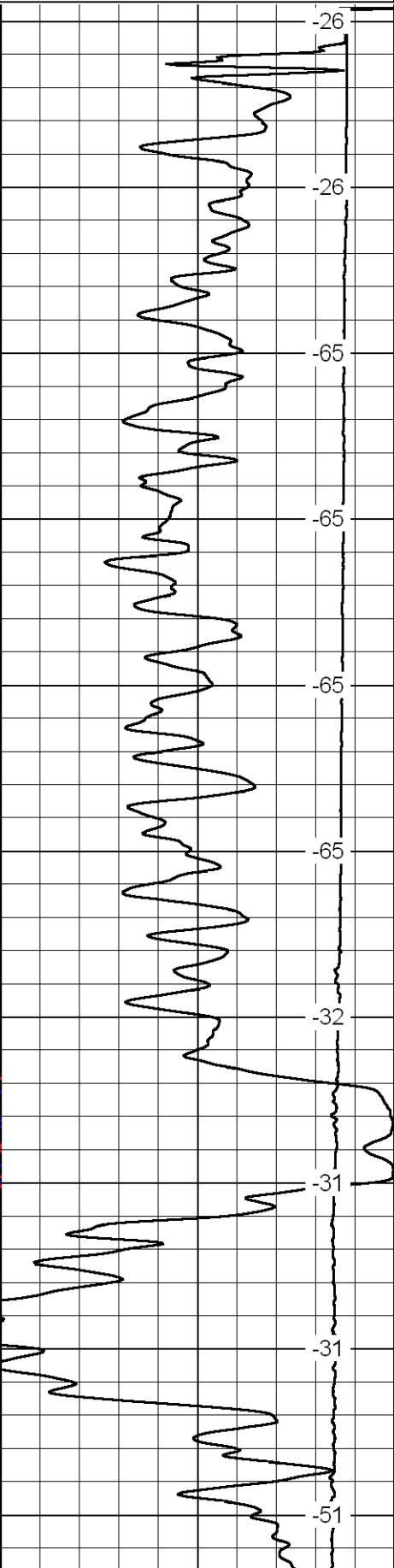
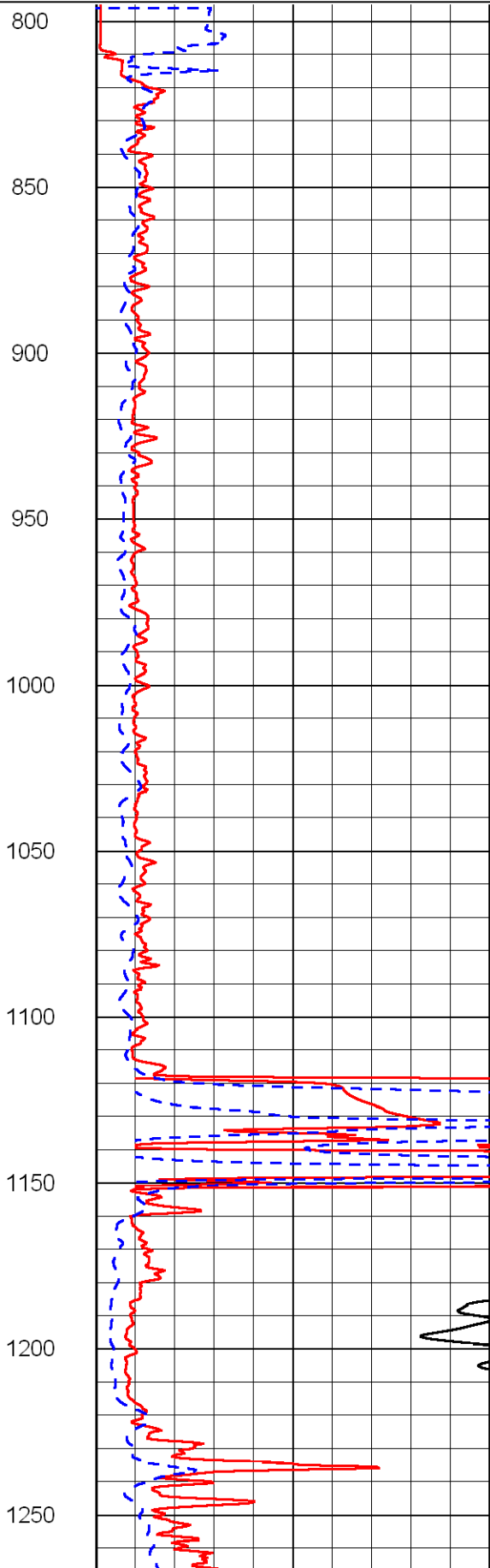
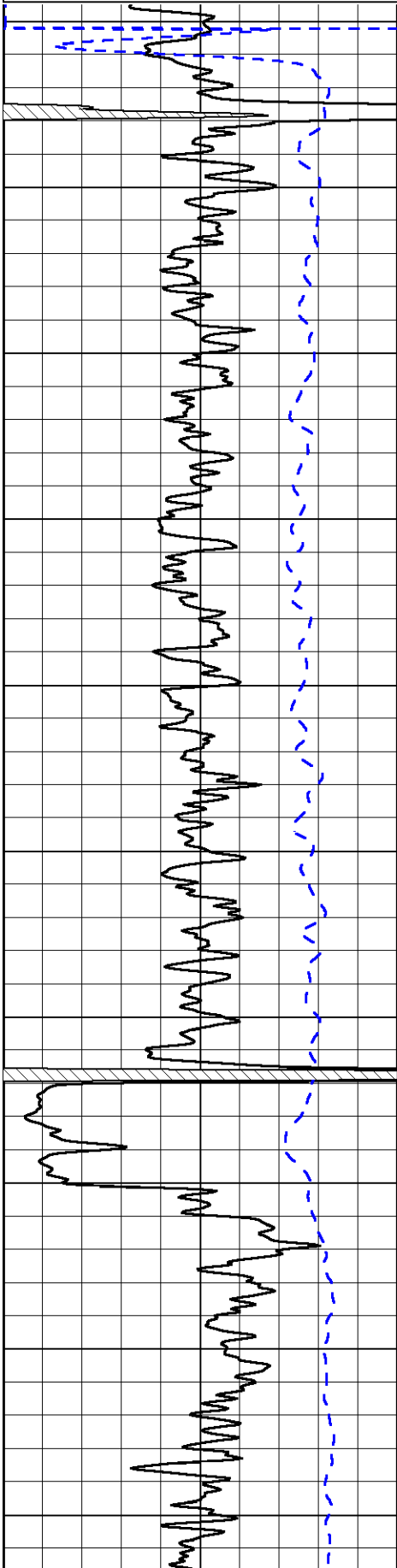
Thank you for using Log-Tech, Inc.  
 (785) 625-3858  
  
 Natoma, KS:  
 N on 290th to Stop Sign, E to 250th, N to T,  
 E to 200th, N to rig

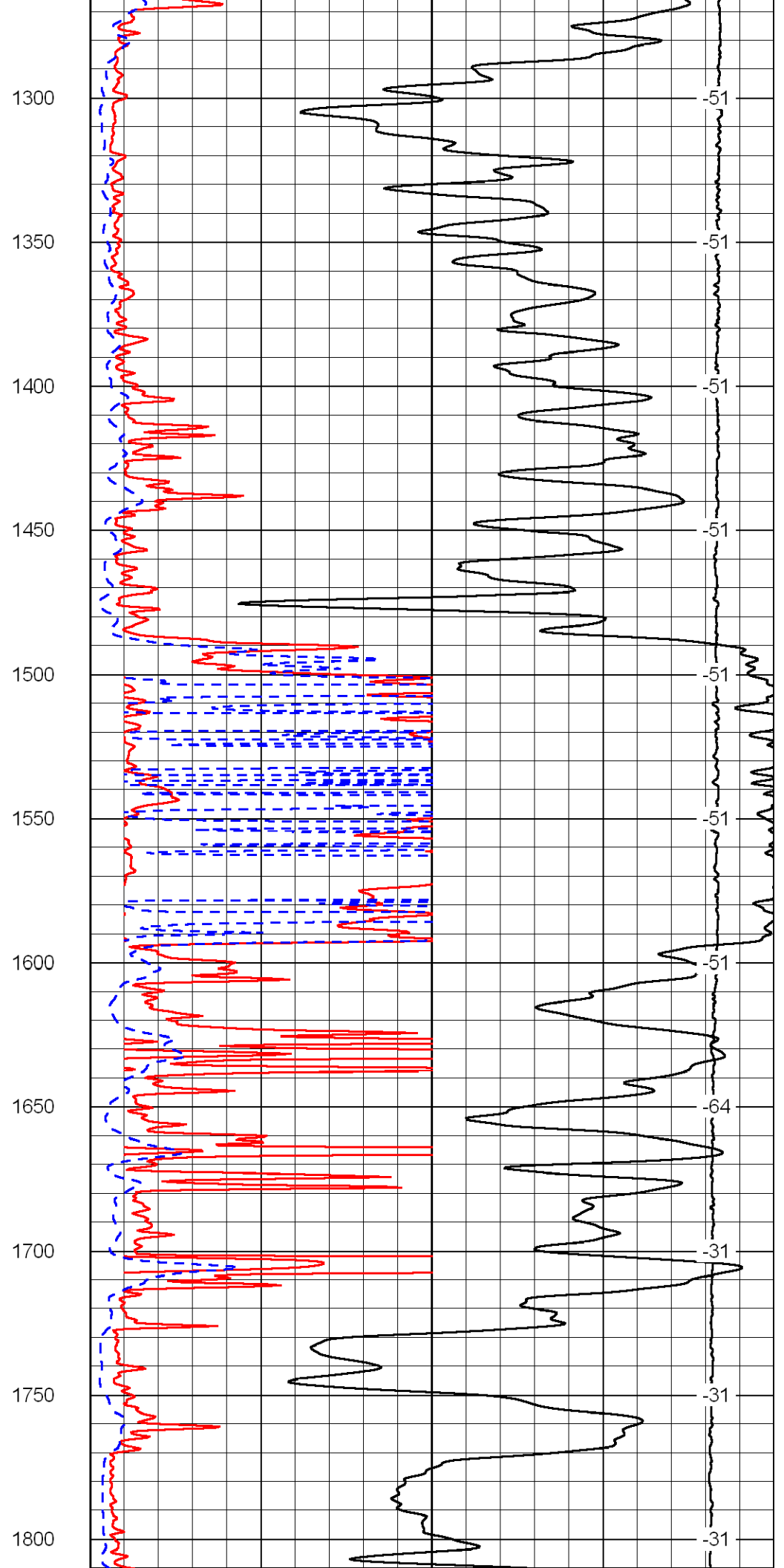
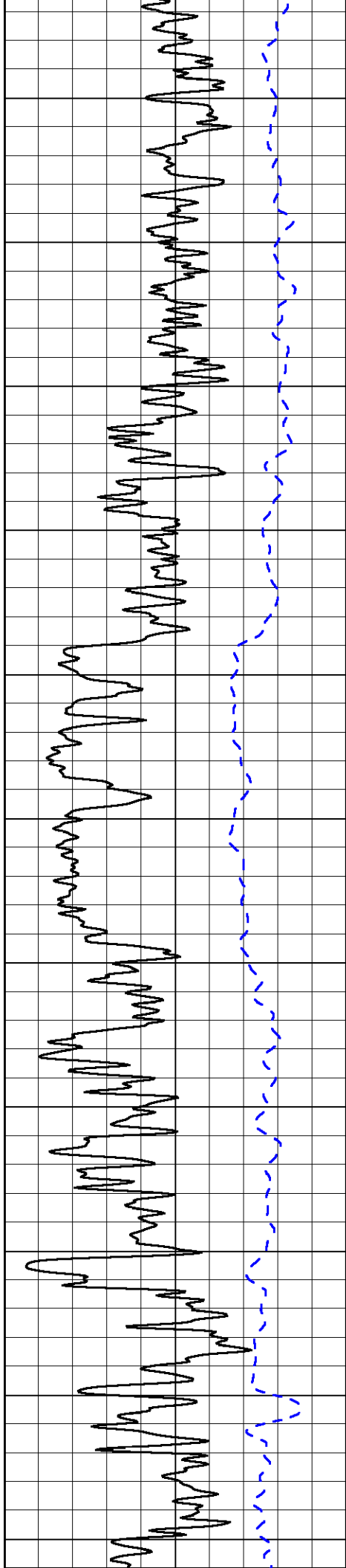
Database File:	brucehd.db
Dataset Pathname:	dil/brumain
Presentation Format:	dil2in
Dataset Creation:	Thu Jun 09 02:56:27 2011
Charted by:	Depth in Feet scaled 1:600

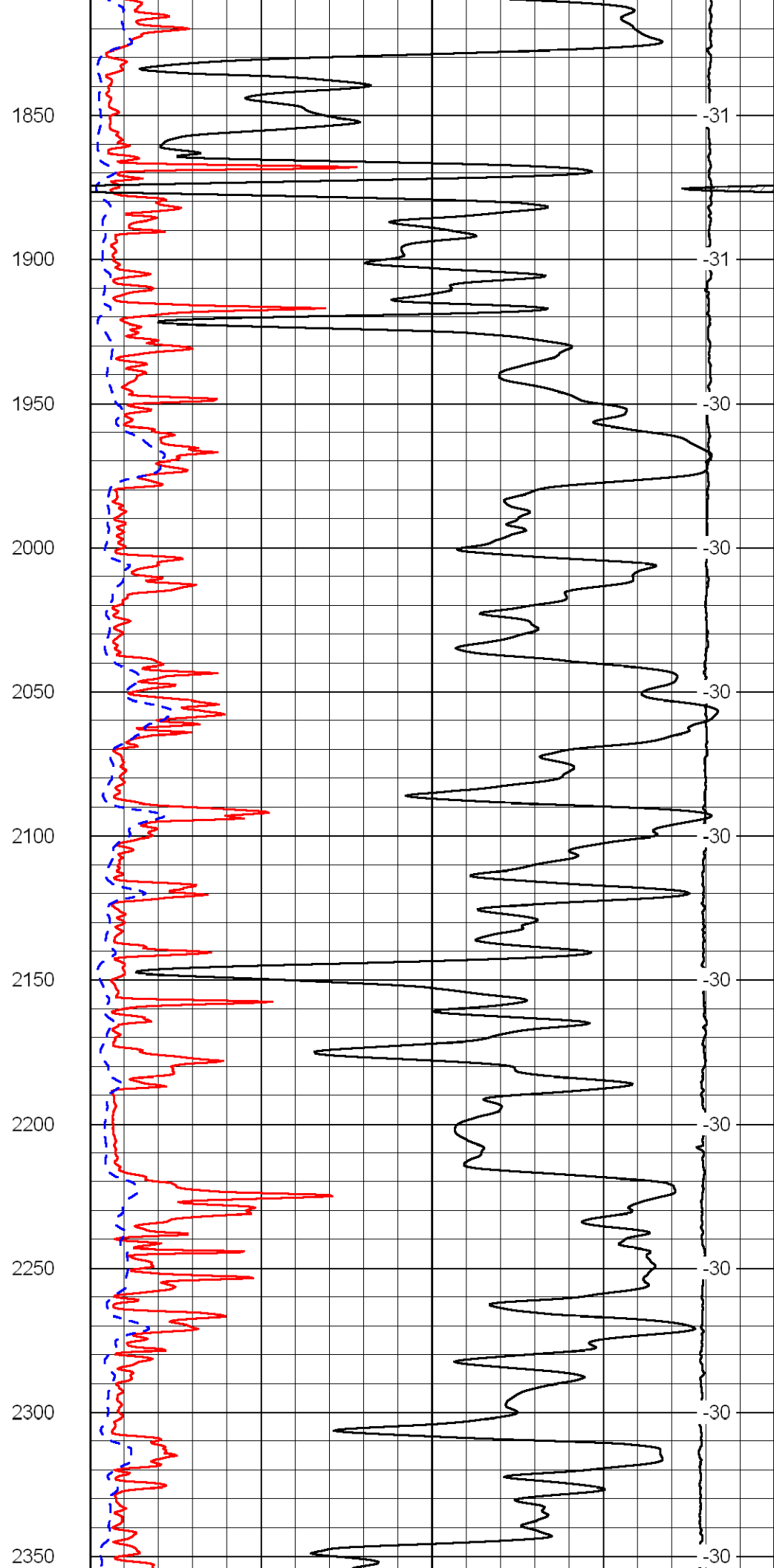
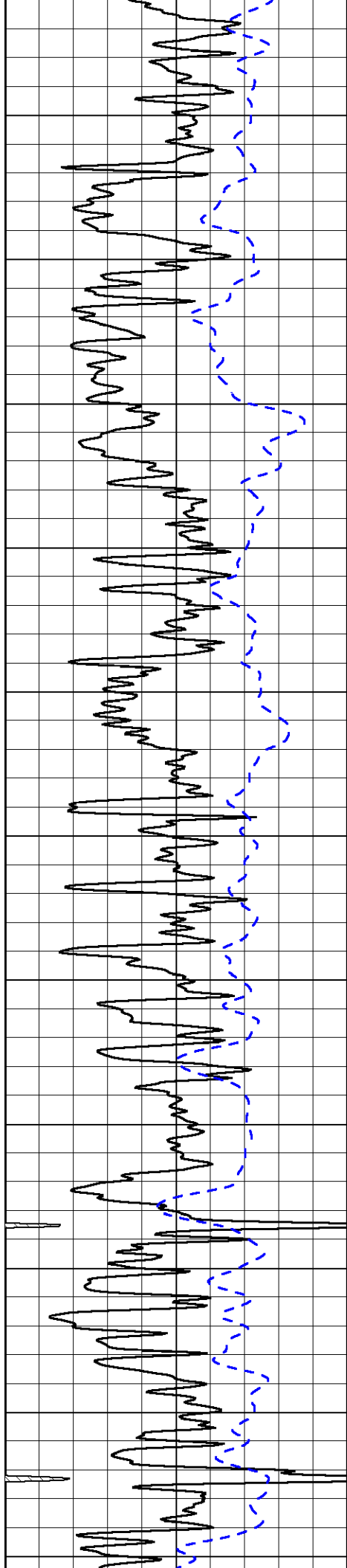
0 Gamma Ray 150  
-200 SP 0

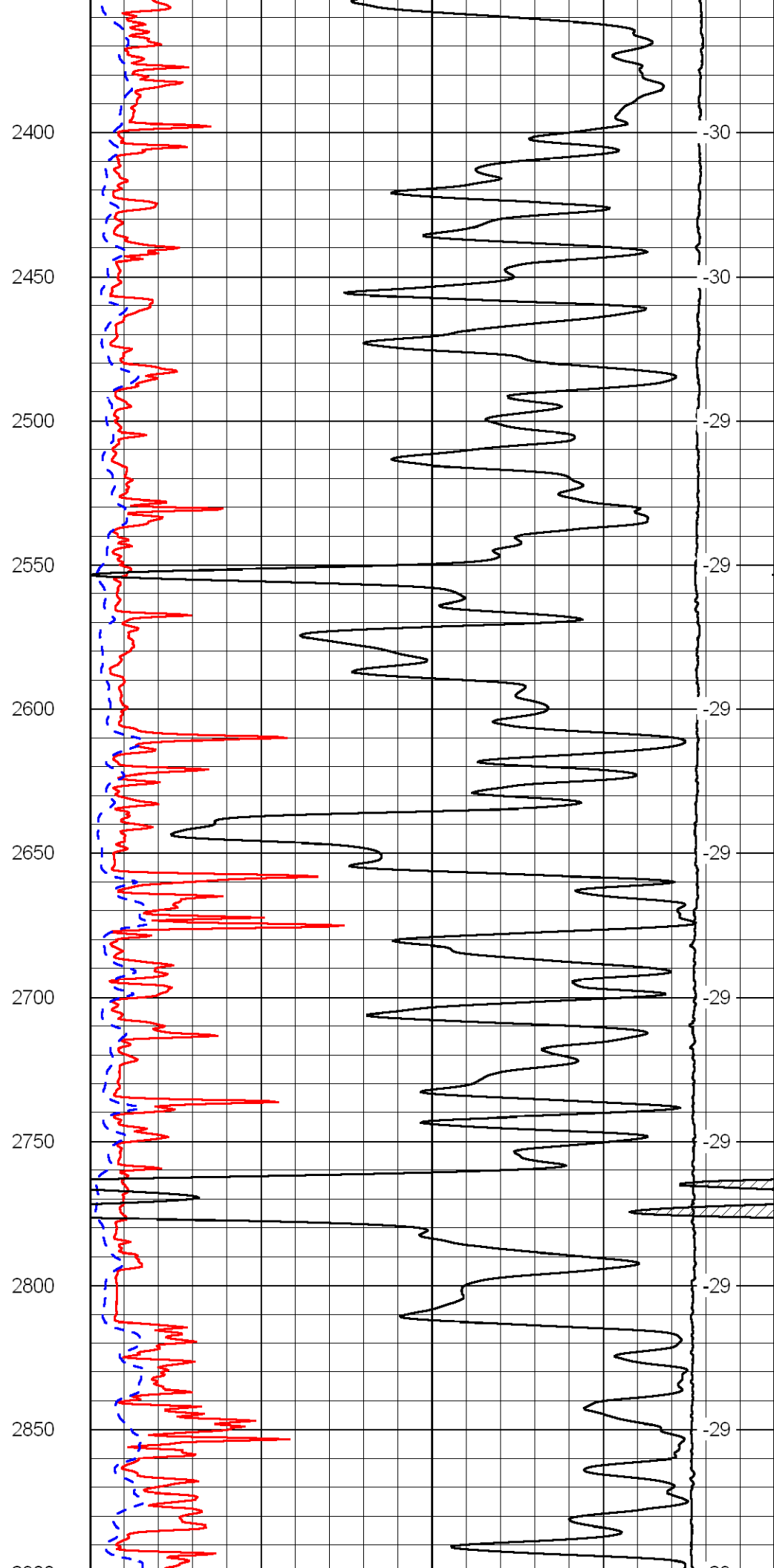
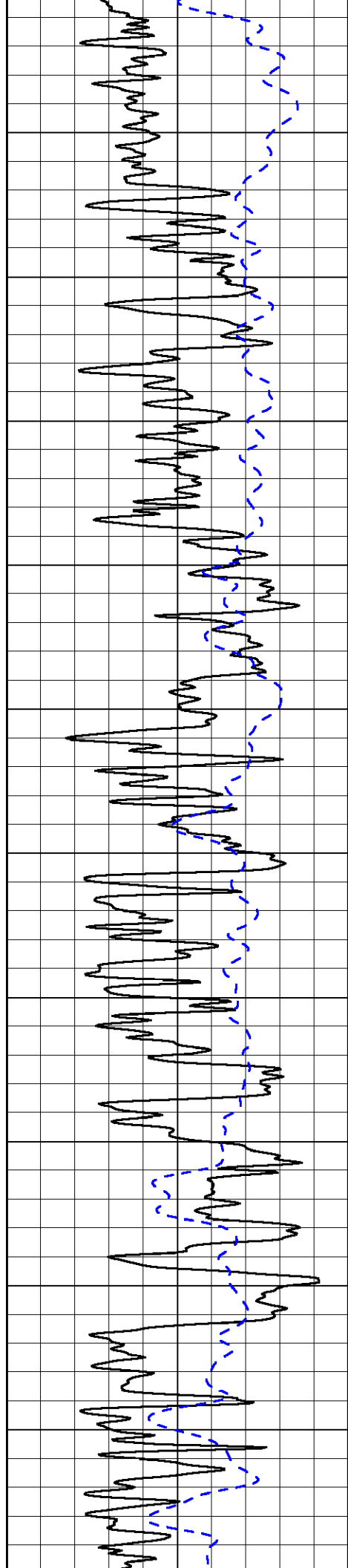
0 Shallow Resistivity 50  
0 Deep Resistivity 50  
1000 Conductivity 0  
15000 Line Tension 0  
50 Shallow Resistivity 500  
50 Deep Resistivity 500

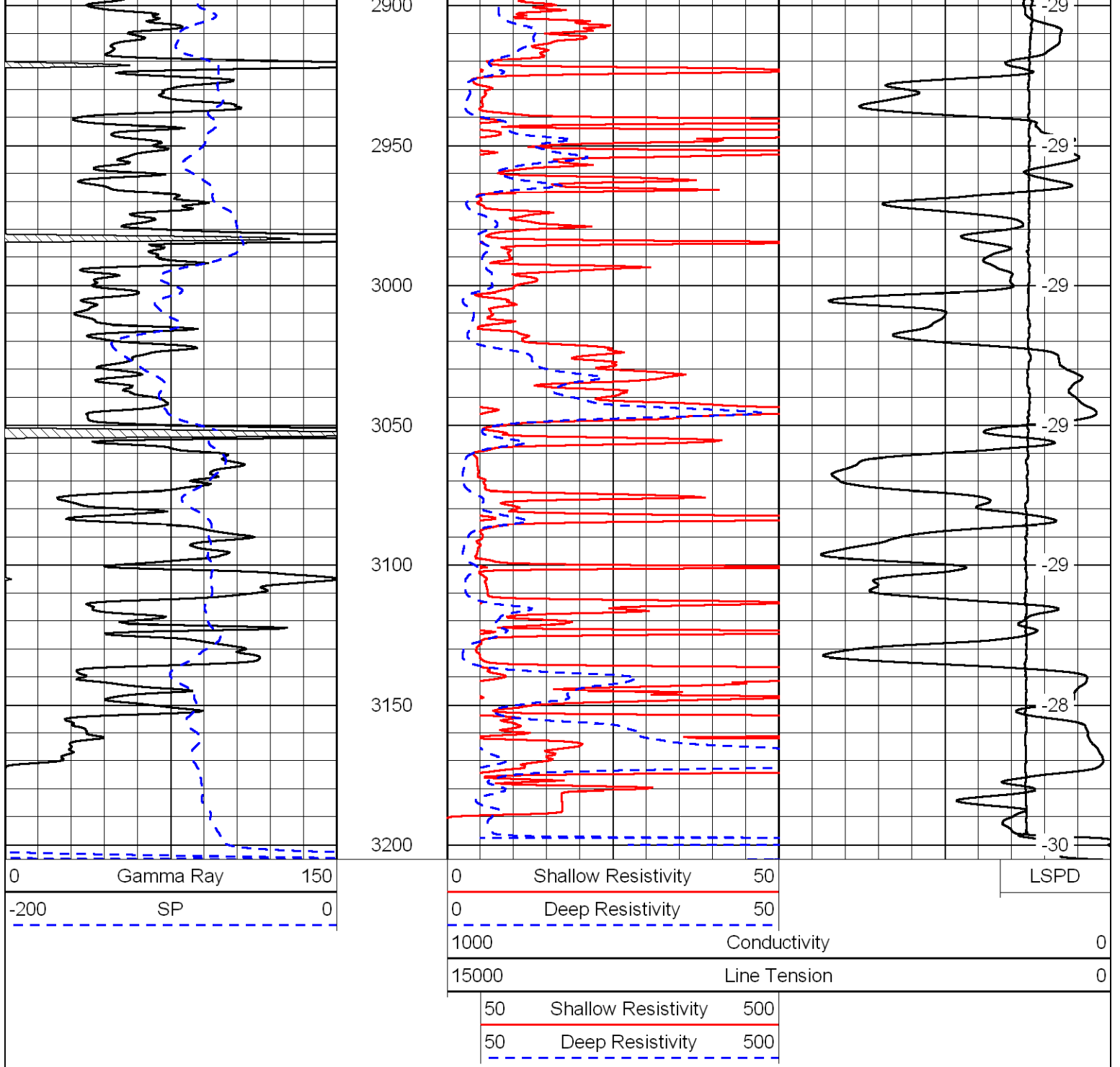
LSPD



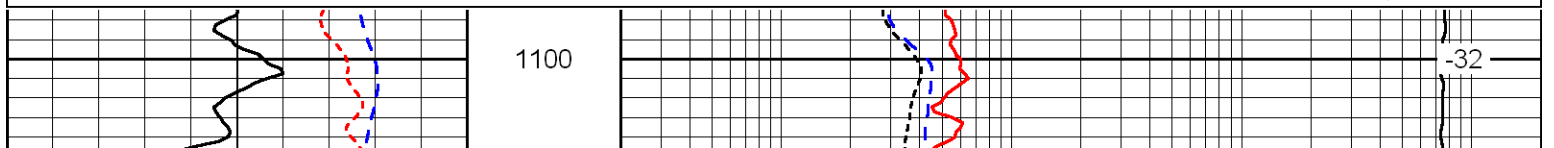
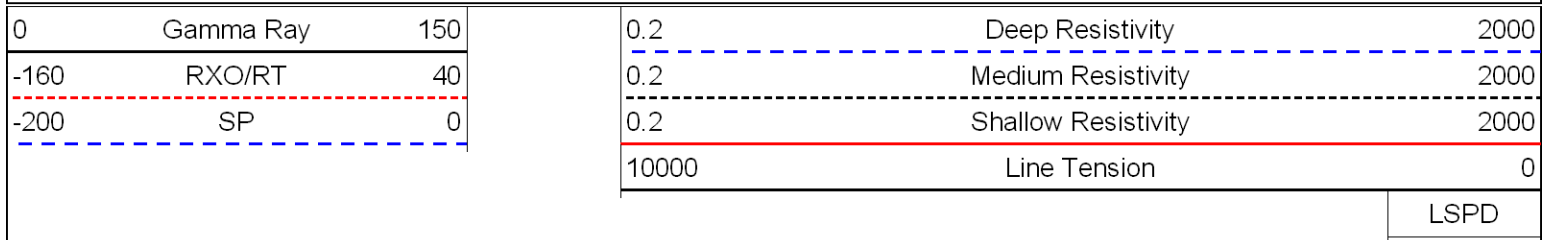


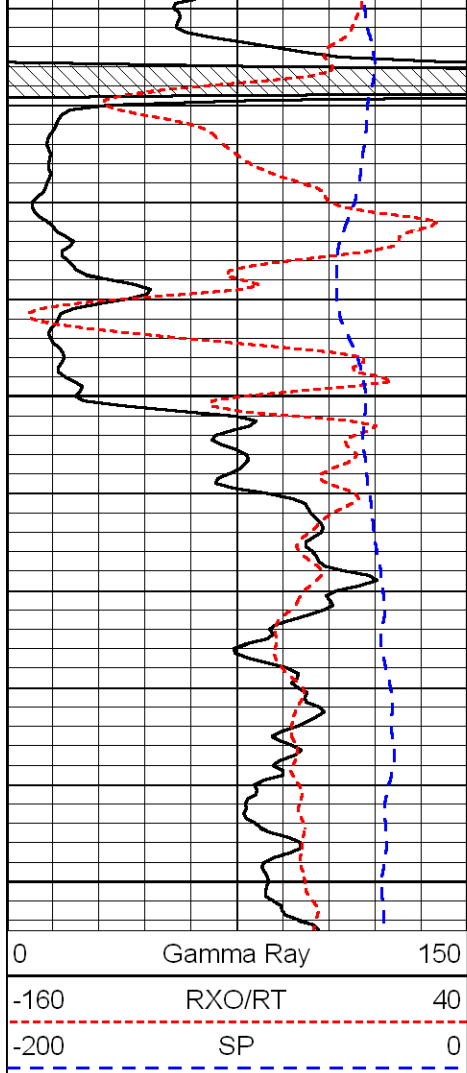






Database File: brucehd.db  
 Dataset Pathname: dil/brumain  
 Presentation Format: dil  
 Dataset Creation: Thu Jun 09 02:56:27 2011  
 Charted by: Depth in Feet scaled 1:240

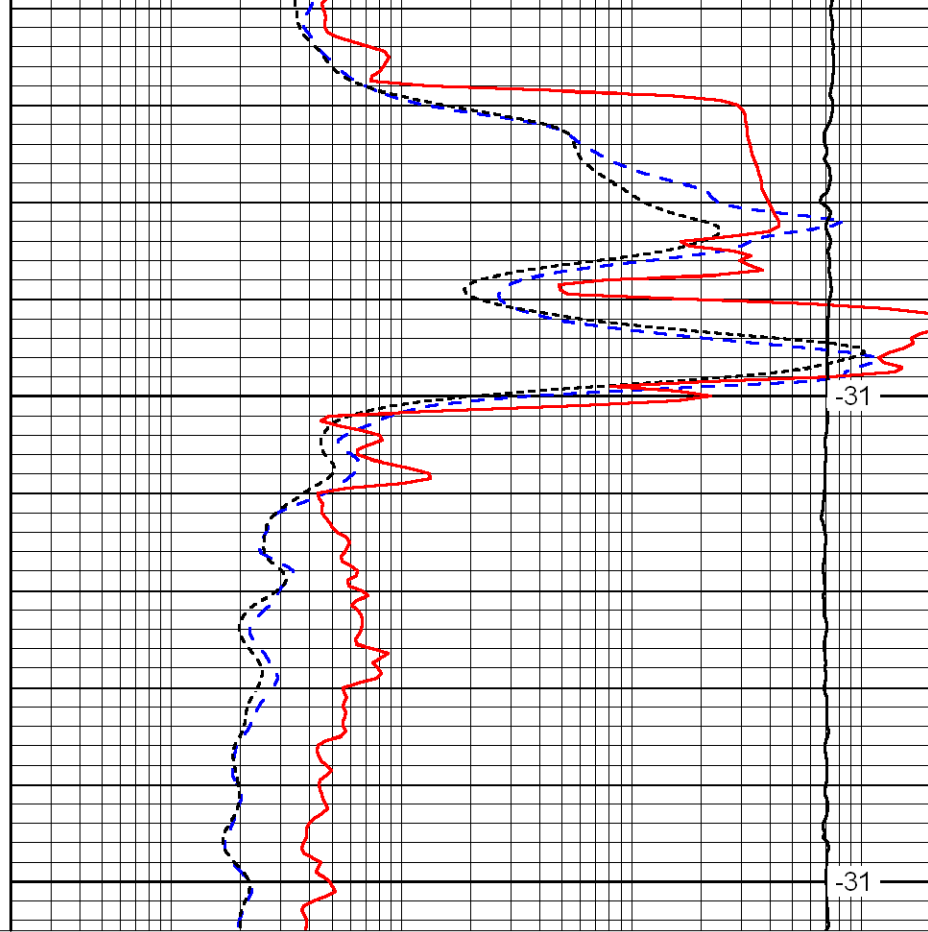




1150

1200

0	Gamma Ray	150
-160	RXO/RT	40
-200	SP	0



-31

-31

0.2	Deep Resistivity	2000
0.2	Medium Resistivity	2000
0.2	Shallow Resistivity	2000
10000	Line Tension	0

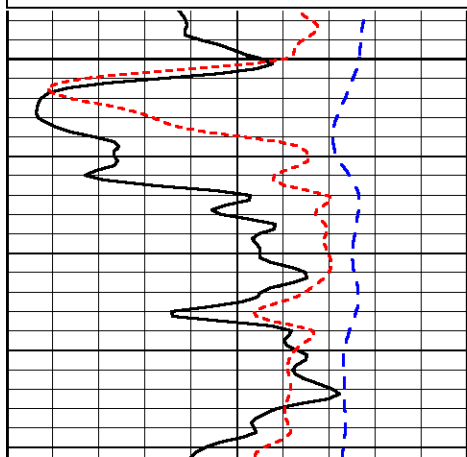
LSPD

Database File: brucehd.db  
 Dataset Pathname: dil/brumain  
 Presentation Format: dil  
 Dataset Creation: Thu Jun 09 02:56:27 2011  
 Charted by: Depth in Feet scaled 1:240

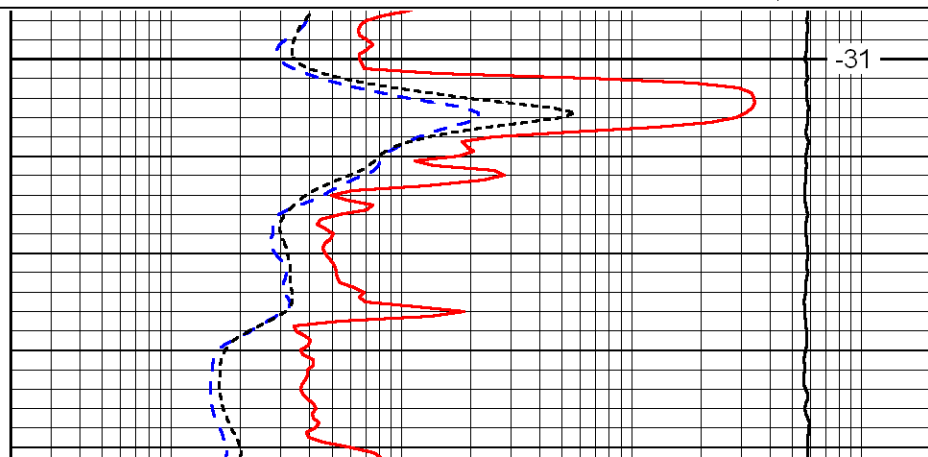
0	Gamma Ray	150
-160	RXO/RT	40
-200	SP	0

0.2	Deep Resistivity	2000
0.2	Medium Resistivity	2000
0.2	Shallow Resistivity	2000
10000	Line Tension	0

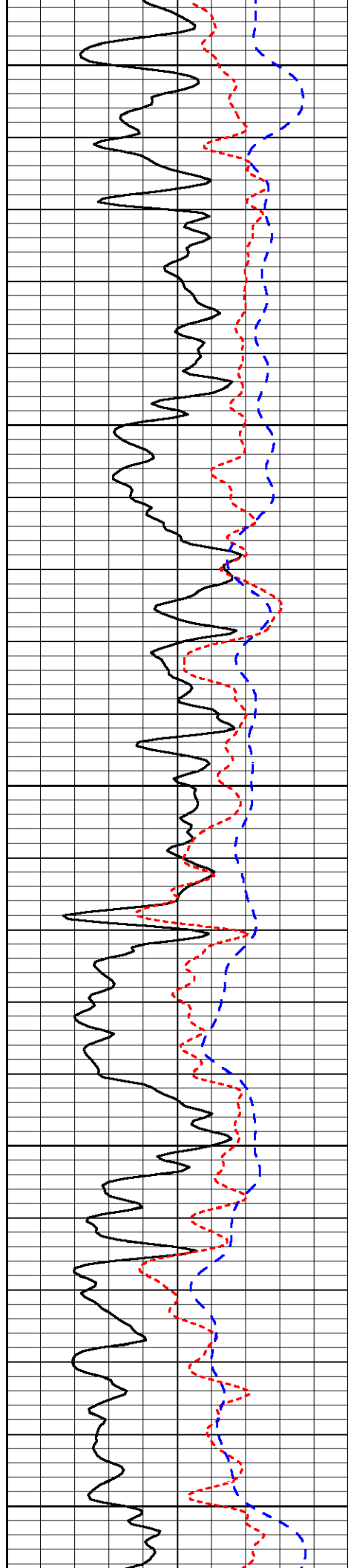
LSPD



1700



-31



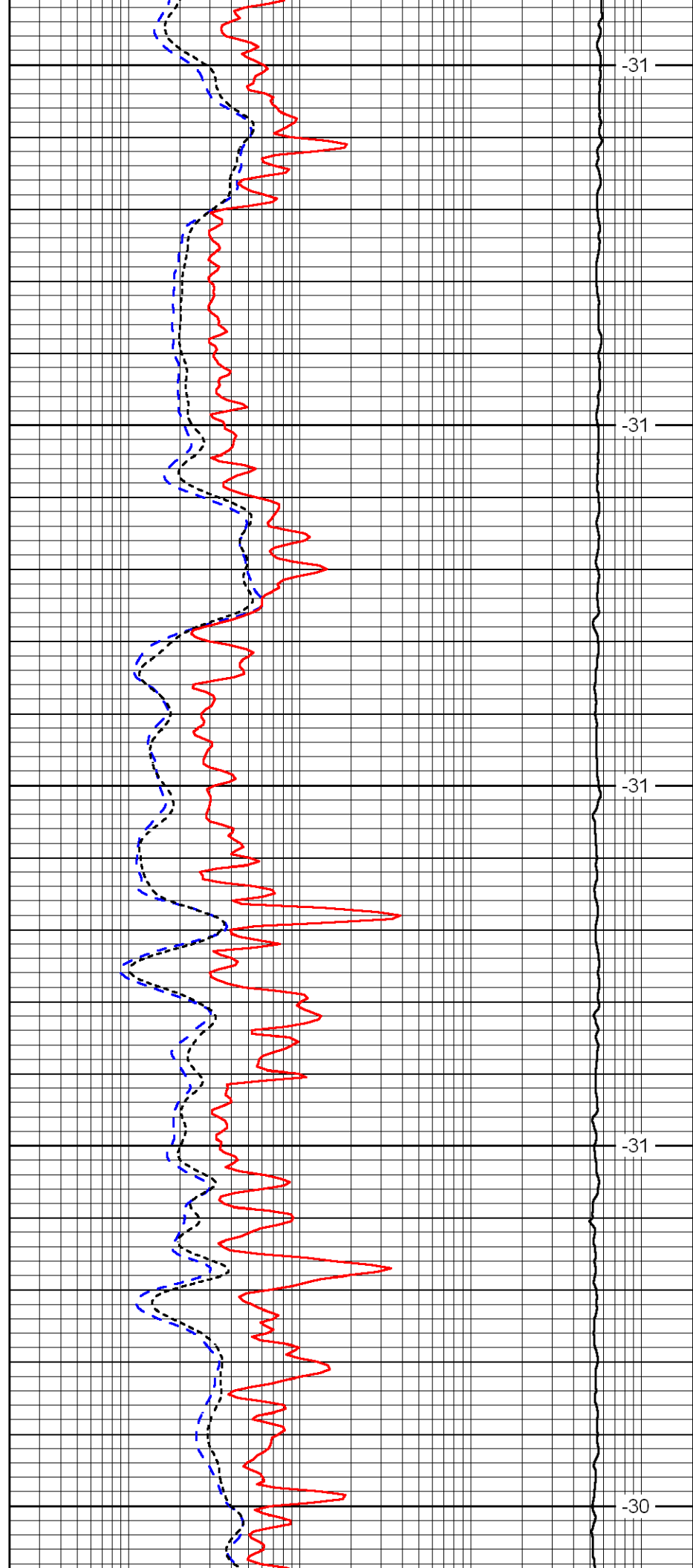
1750

1800

1850

1900

1950



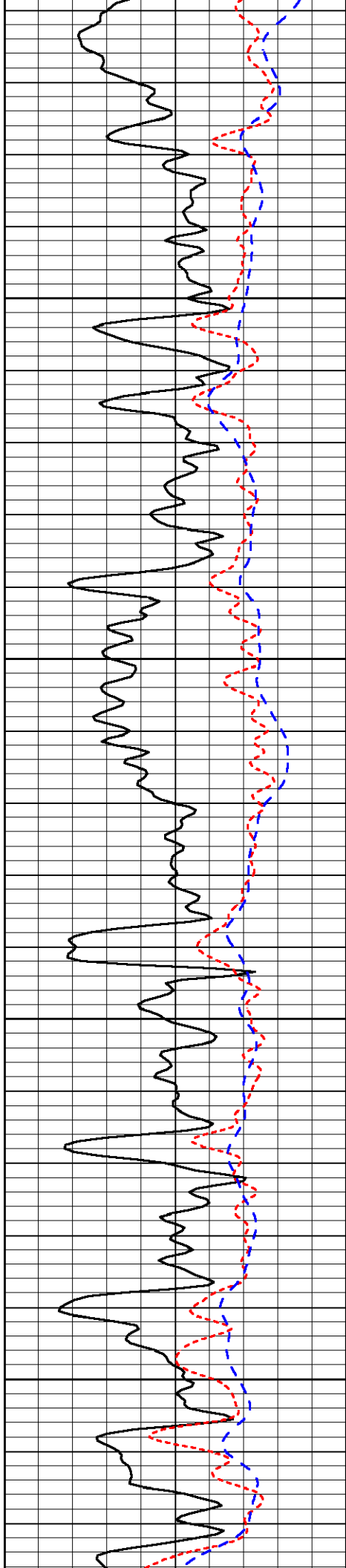
-31

-31

-31

-31

-30

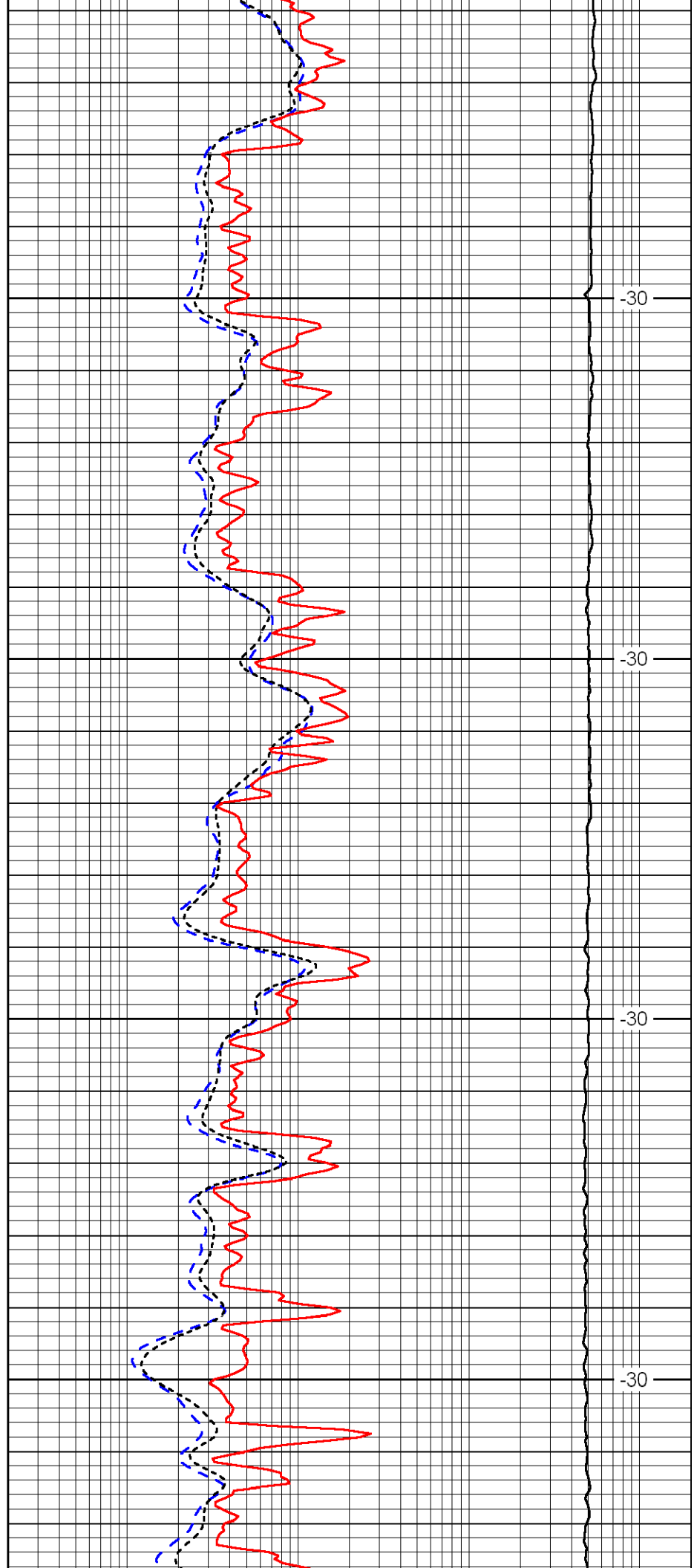


2000

2050

2100

2150

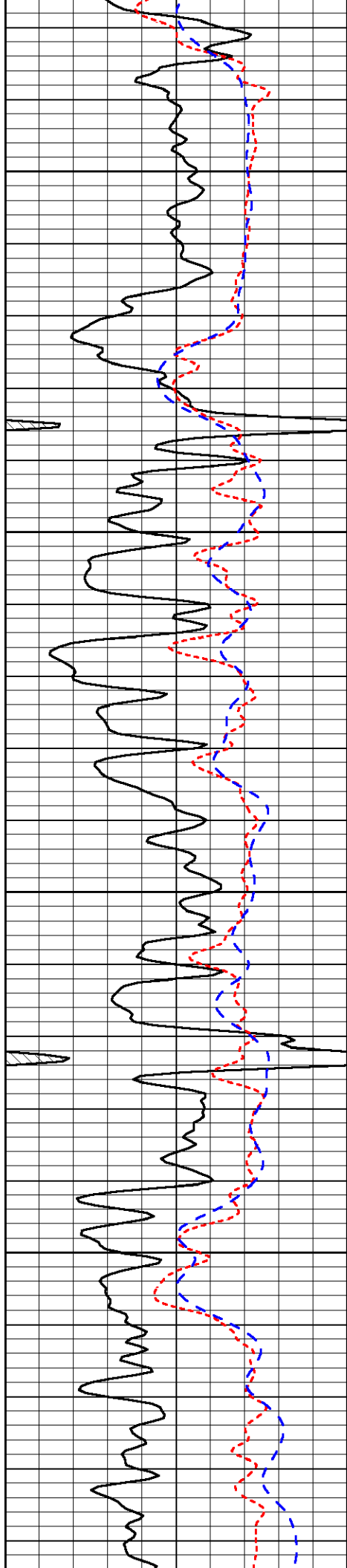


-30

-30

-30

-30

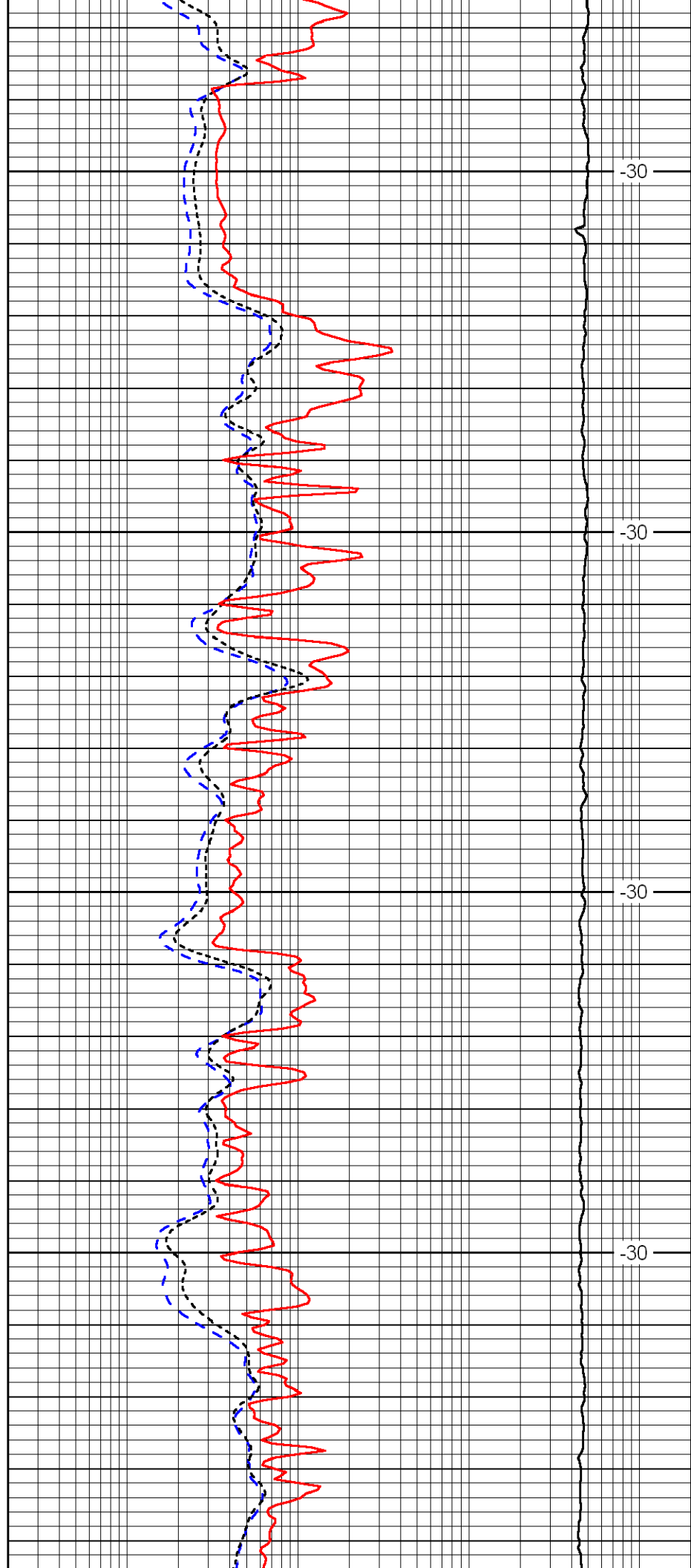


2200

2250

2300

2350

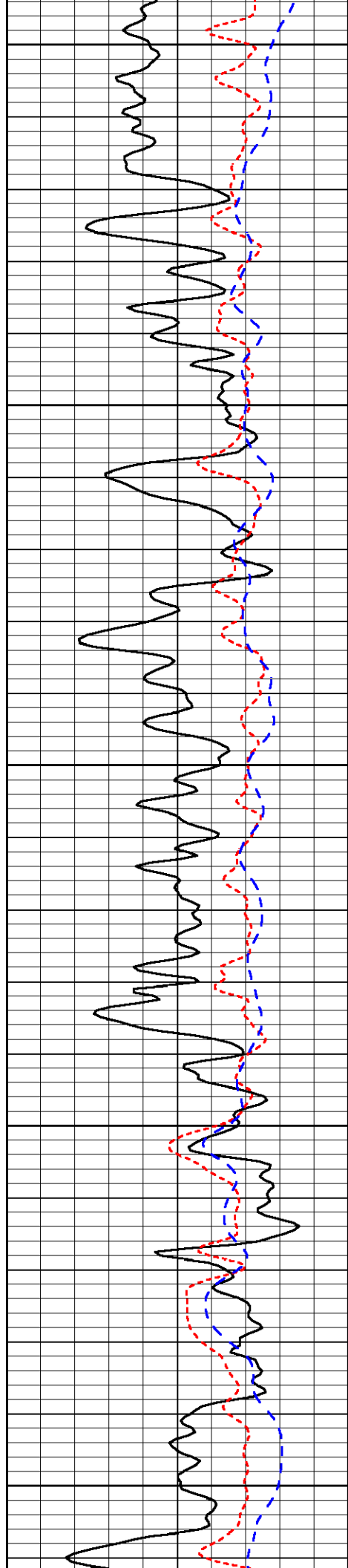


-30

-30

-30

-30



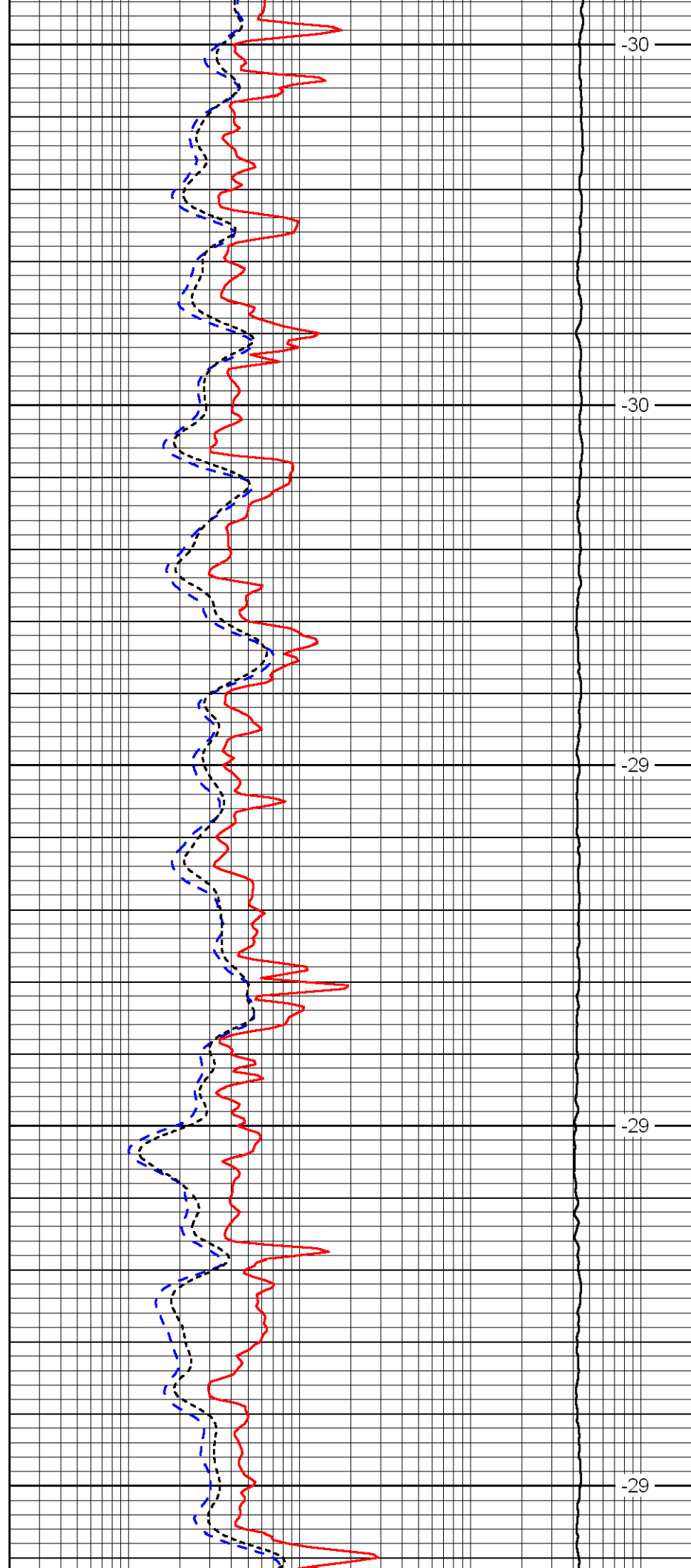
2400

2450

2500

2550

2600



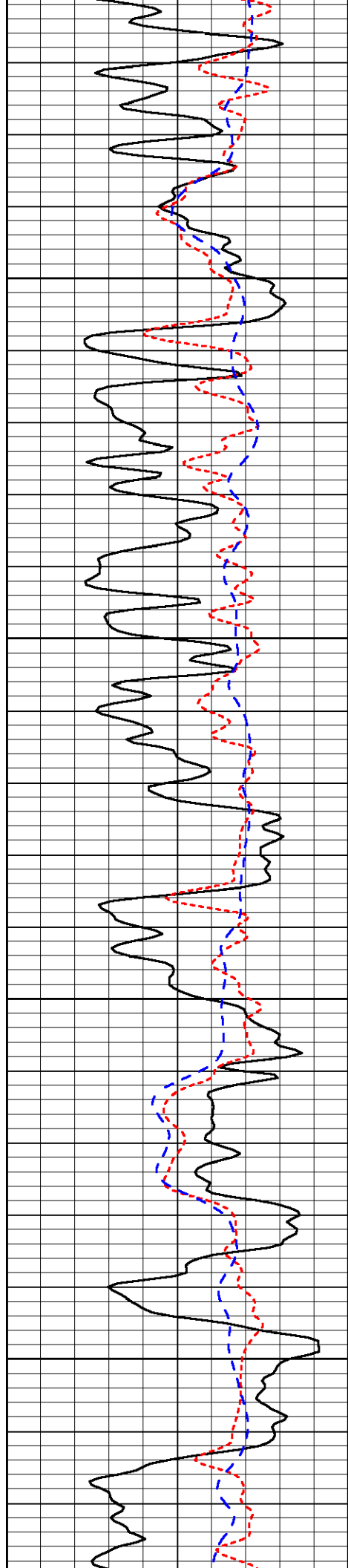
-30

-30

-29

-29

-29

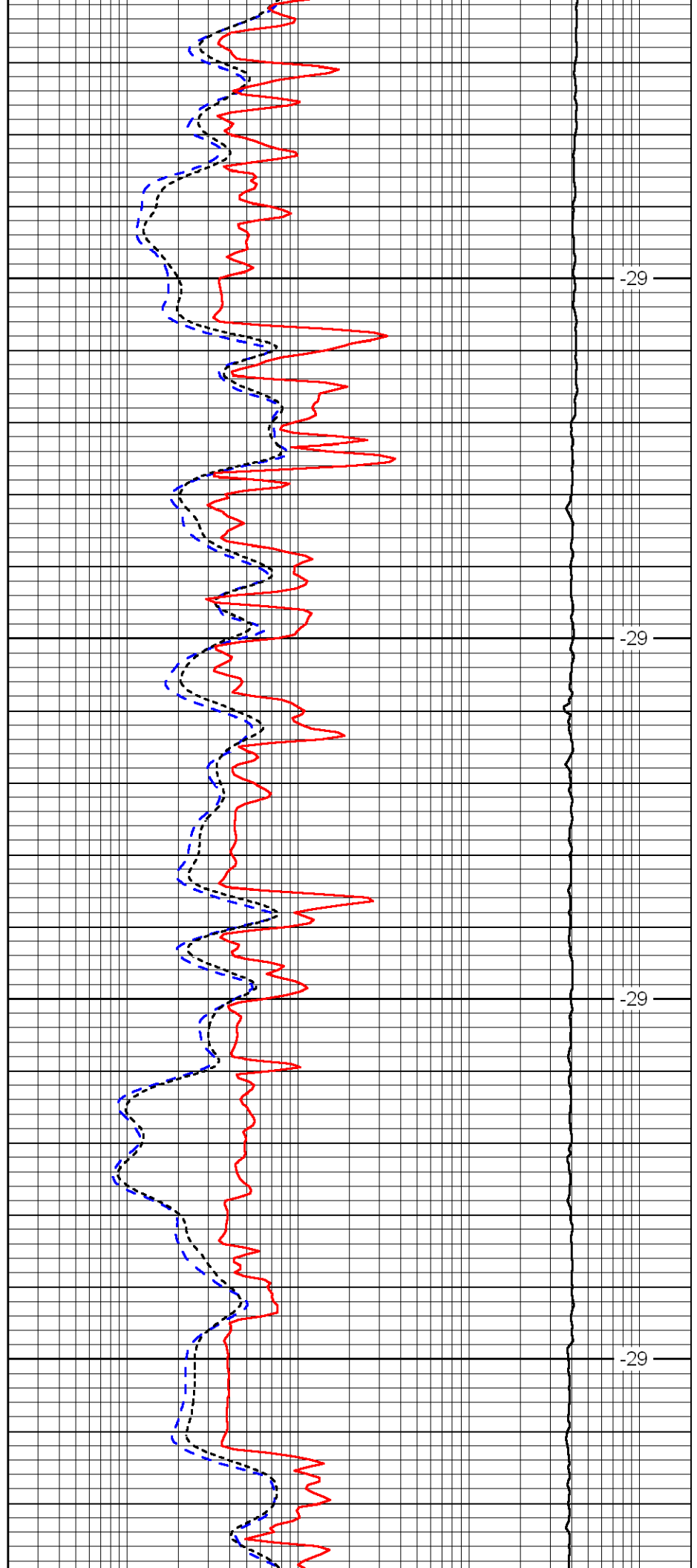


2650

2700

2750

2800

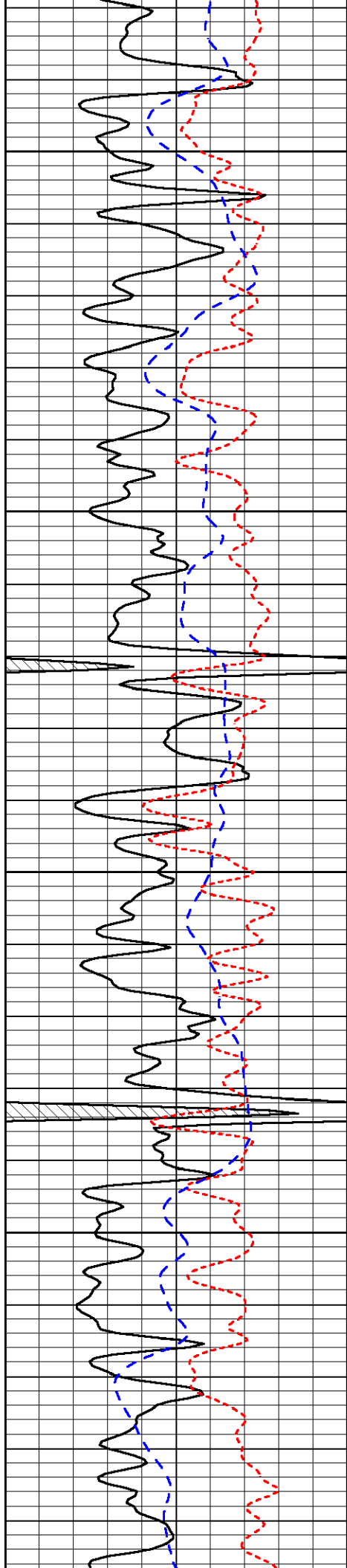


-29

-29

-29

-29

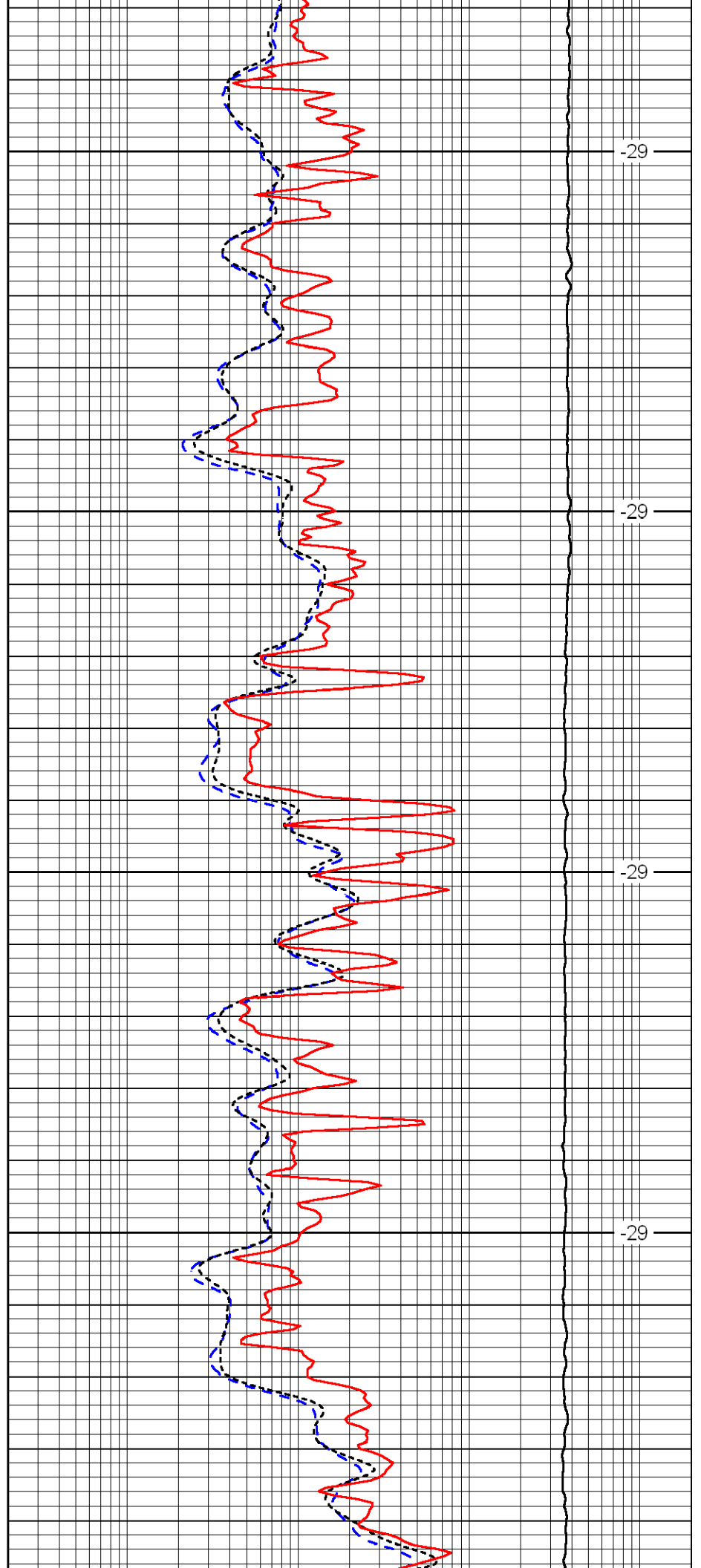


2850

2900

2950

3000

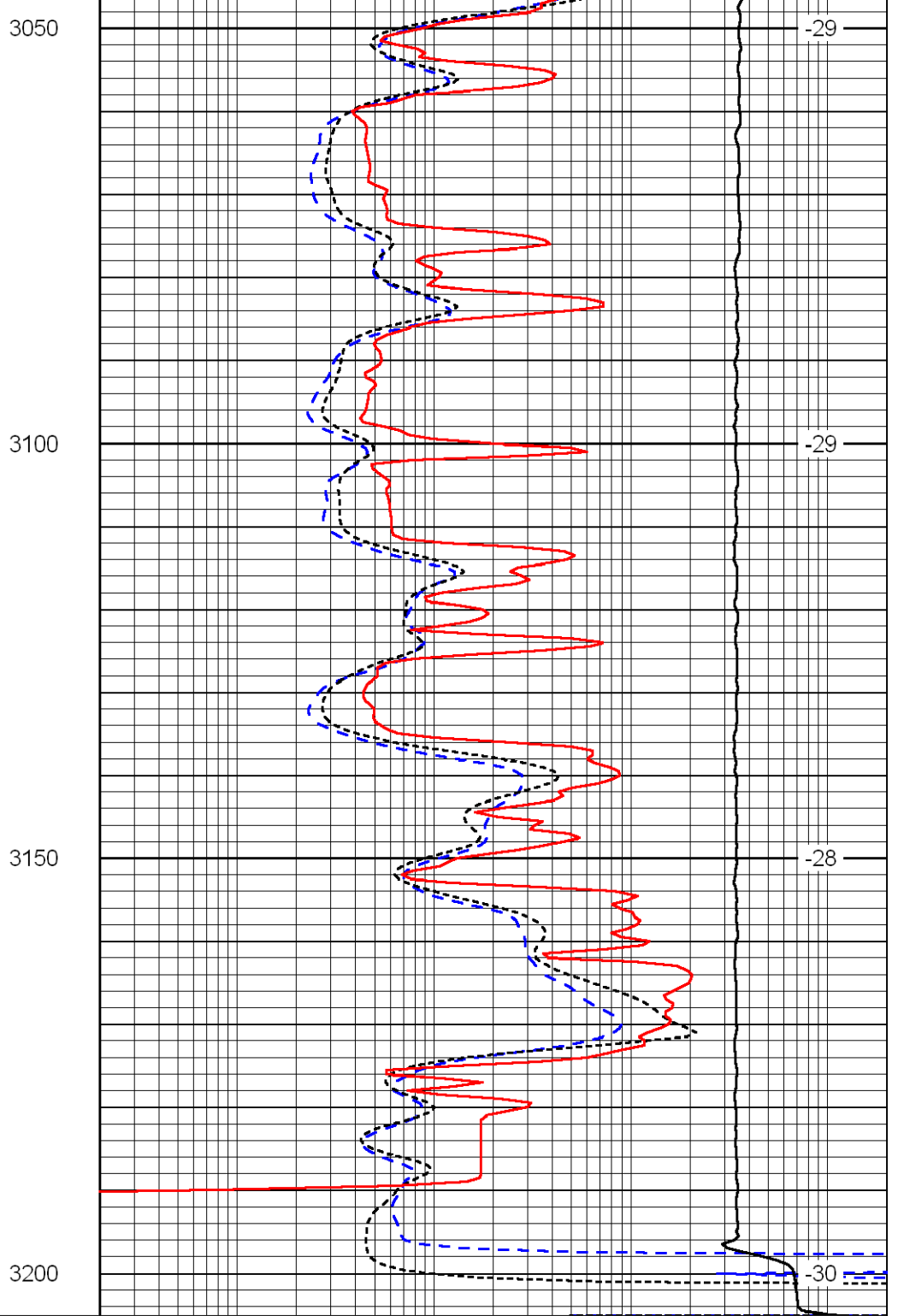
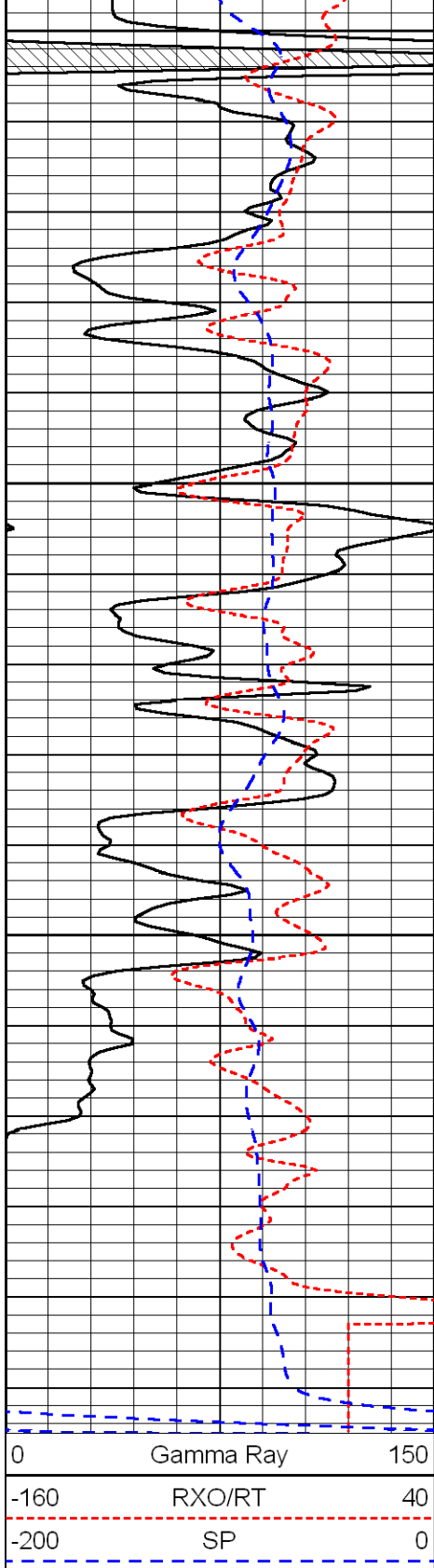


-29

-29

-29

-29



0.2	Deep Resistivity	2000
0.2	Medium Resistivity	2000
0.2	Shallow Resistivity	2000
10000	Line Tension	0

LSPD