



# Microresistivity Log

**DIGITAL LOG** (785) 625-3858

API No. 15-009-25,557-00-00	Company <b>Reif Oil &amp; Gas Company, LLC</b>	Well <b>D. Steinert No. 2</b>	Field <b>Barton</b>
	County <b>Barton</b>	State <b>Kansas</b>	
	Location <b>S1/2 SW NW NE 1,250' FNL &amp; 2,310' FEL</b>	Other Services CNL/CDL DIL	
	Sec: <b>3</b>	Twp: <b>17S</b>	Rge: <b>15W</b>
Permanent Datum Log Measured From Drilling Measured From	Ground Level Kelly Bushing Kelly Bushing	Elevation 1960 12 Ft. Above Perm. Datum	K.B. 1972 D.F. 1960 G.L. 1960

Date	5/25/2011
Run Number	Two
Depth Driller	3606
Depth Logger	3396
Bottom Logged Interval	3395
Top Log Interval	2900
Casing Driller	8.625 @ 536
Casing Logger	536
Bit Size	7.875
Type Fluid in Hole	Chemical
Salinity, ppm CL	18400
Density / Viscosity	9.4   39
pH / Fluid Loss	9.0   18.8
Source of Sample	Flowline
Rm @ Meas. Temp	.18 @ 66
Rmf @ Meas. Temp	.14 @ 66
Rmc @ Meas. Temp	.24 @ 66
Source of Rmf / Rmc	Charts
Rm @ BHT	.11 @ 112
Operating Rig Time	4 1/2 Hours
Max Rec. Temp. F	112
Equipment Number	10
Location	Hays
Recorded By	J. Long
Witnessed By	Jim Musgrove

<<< Fold Here >>>

All interpretations are opinions based on inferences from electrical or other measurements and we cannot and do not guarantee the accuracy or correctness of any interpretation, and we shall not, except in the case of gross or willful negligence on our part, be liable or responsible for any loss, costs, damages, or expenses incurred or sustained by anyone resulting from any interpretation made by any of our officers, agents or employees. These interpretations are also subject to our general terms and conditions set out in our current Price Schedule.

### Comments

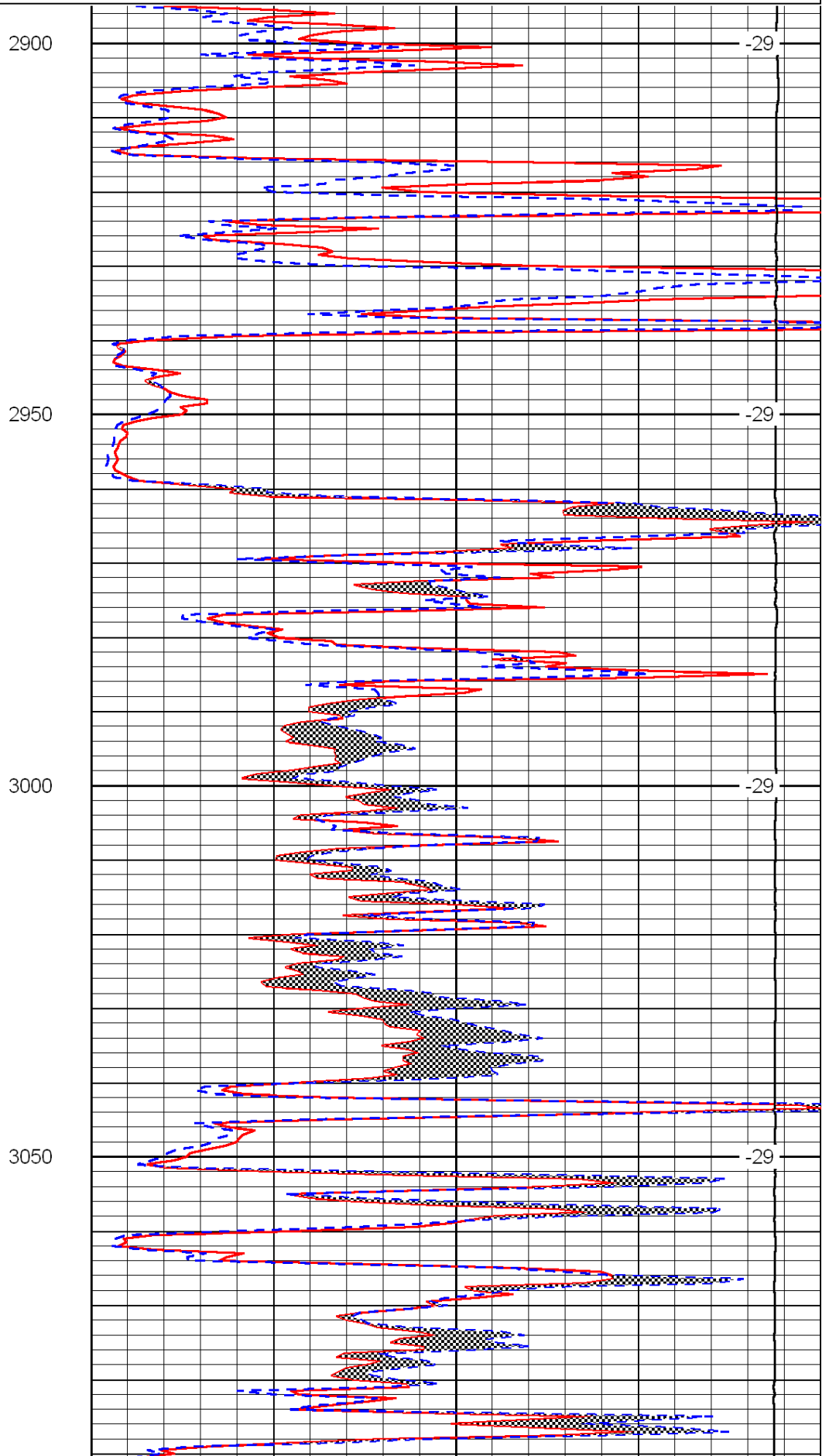
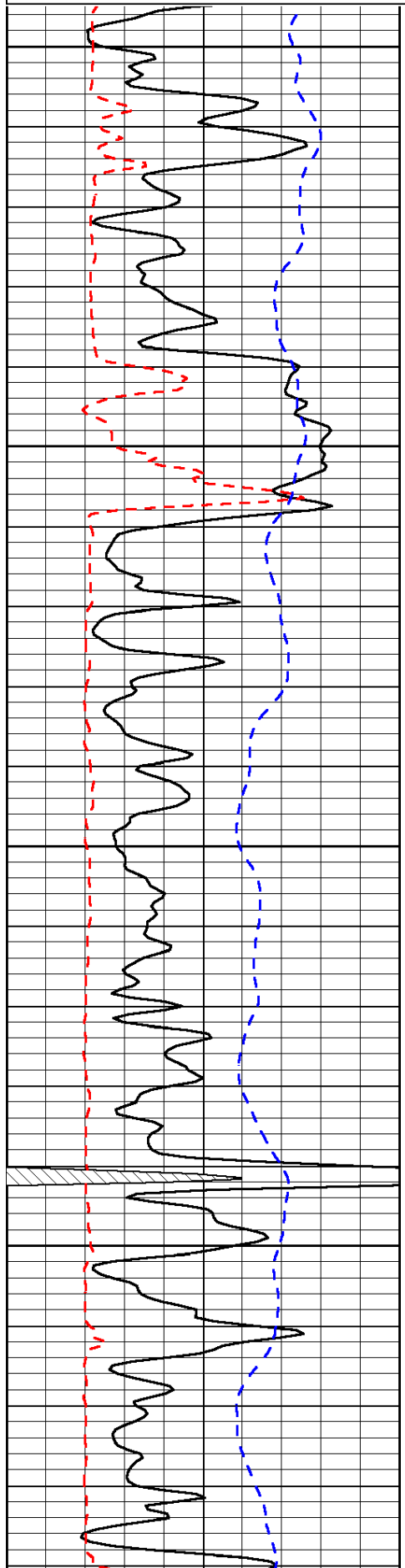
Thank you for using Log-Tech, Inc.  
(785) 625-3858

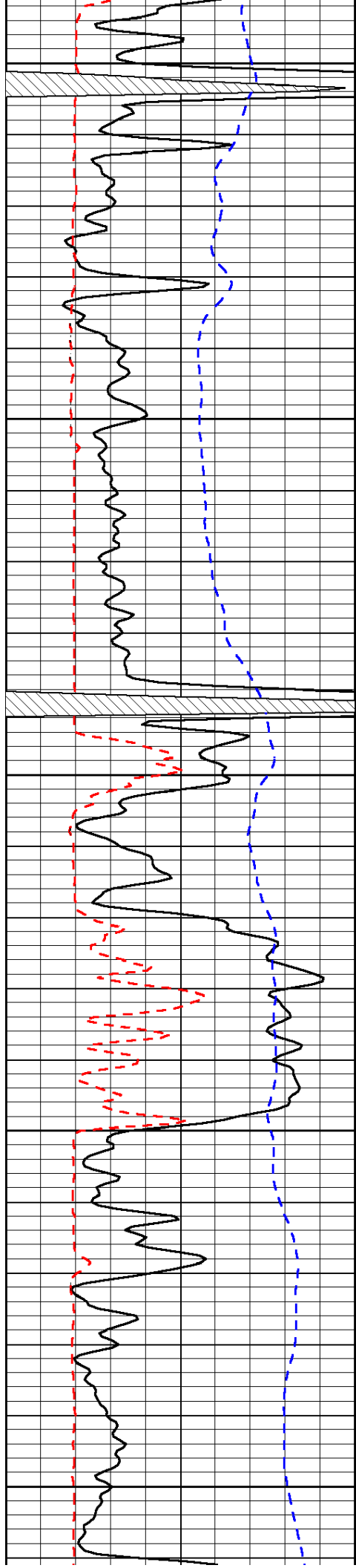
Galatia, 2 South, 1/2 West, South Into

0	Gamma Ray	150
6	Micro Log Caliper (GAPI)	16
-200	SP (mV)	0

0	Micro Inverse 1 X 1	40
0	Micro Normal 2"	40
15000	Line Weight	0

LSPD





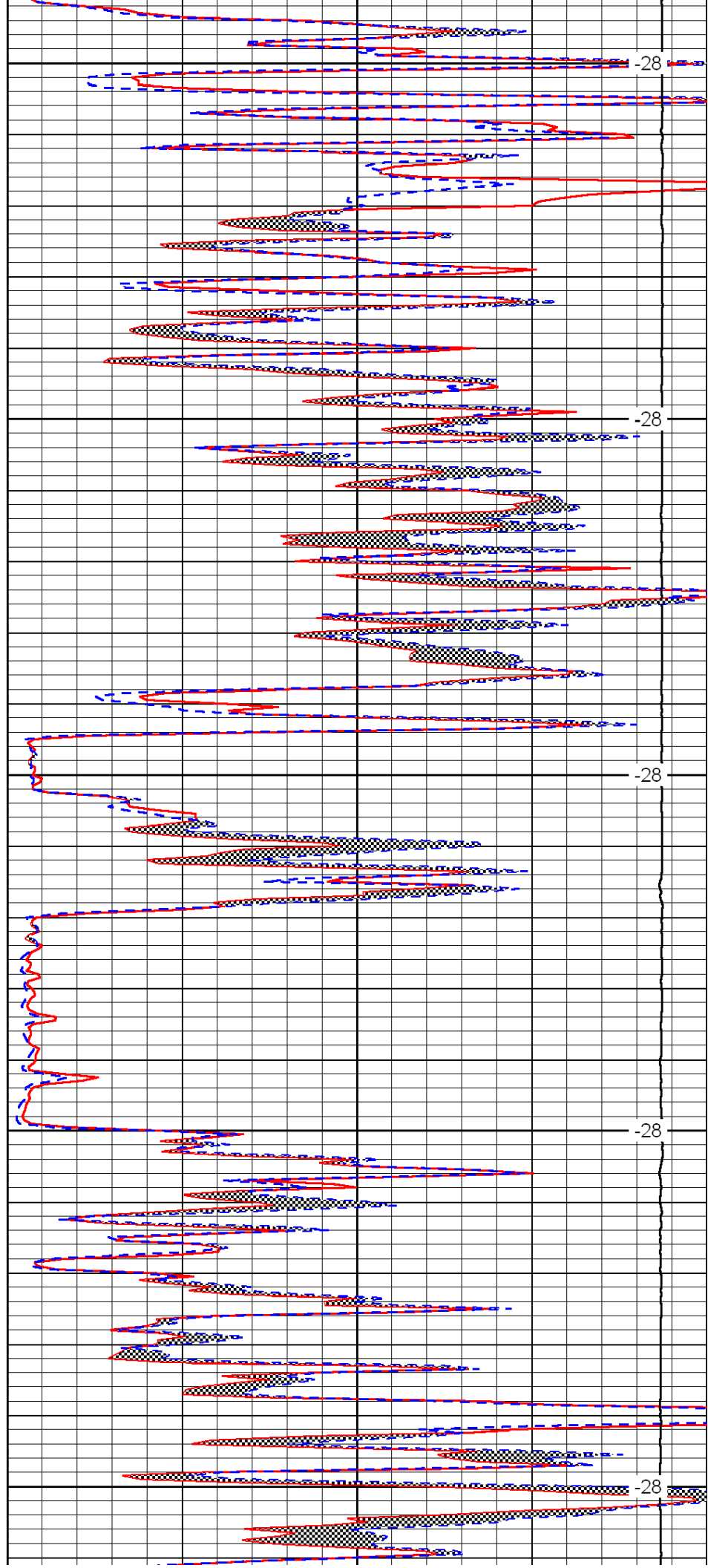
3100

3150

3200

3250

3300



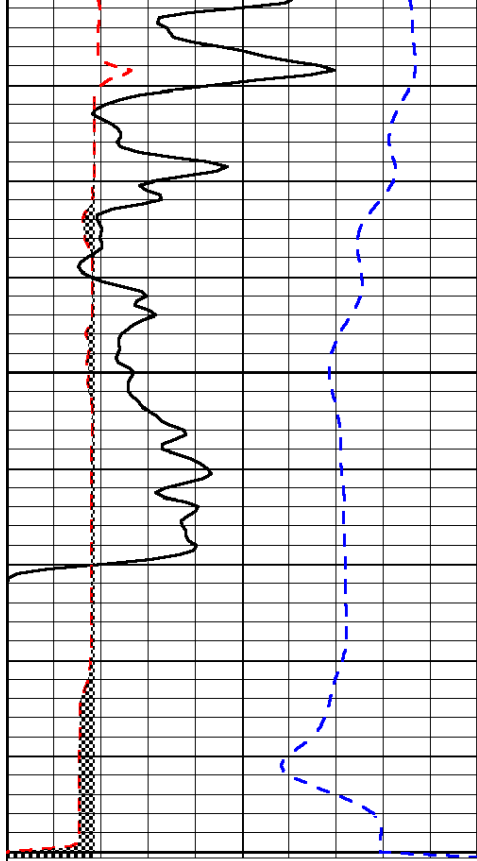
-28

-28

-28

-28

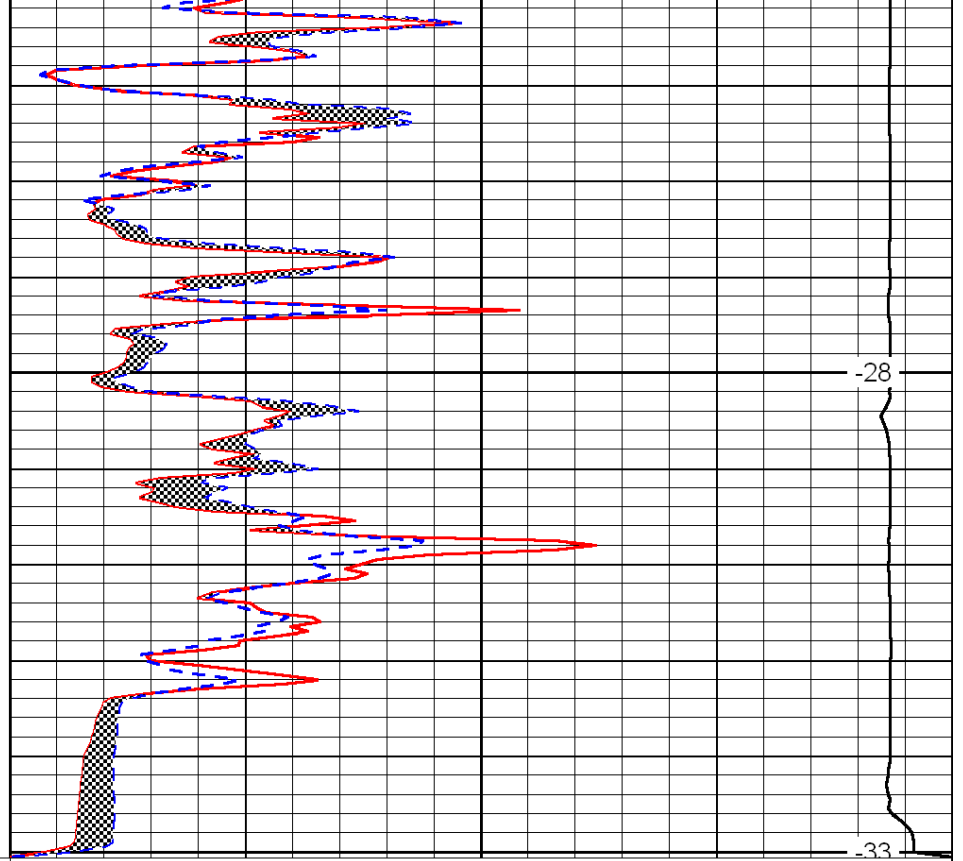
-28



0	Gamma Ray	150
6	Micro Log Caliper (GAPI)	16
-200	SP (mV)	0

3350

3400



0	Micro Inverse 1 X 1	40
0	Micro Normal 2''	40
15000	Line Weight	0

-28

-33

LSPD