



Dual Induction Log

DIGITAL LOG (785) 625-3858

API No.	15-009-25,557-00-00	
Company	Reif Oil & Gas Company, LLC	
Well	D. Steinert No. 2	
Field		
County	Barton	State Kansas
Location	S1/2 SW NW NE 1,250' FNL & 2,310' FEL	
Sec: 3	Twp: 17S	Rge: 15W
Other Services	CNL/CDL MEL	

Permanent Datum	Ground Level	Elevation 1960
Log Measured From	Kelly Bushing	12 Ft. Above Perm. Datum
Drilling Measured From	Kelly Bushing	
Date	5/25/2011	
Run Number	One	
Depth Driller	3606	
Depth Logger	3396	
Bottom Logged Interval	3395	
Top Log Interval	500	
Casing Driller	8.625 @ 536	
Casing Logger	536	
Bit Size	7.875	
Type Fluid in Hole	Chemical	
Salinity, ppm CL	18400	
Density / Viscosity	9.4	39
pH / Fluid Loss	9.0	18.8
Source of Sample	Flowline	
Rm @ Meas. Temp	.18	@ 66
Rmf @ Meas. Temp	.14	@ 66
Rmc @ Meas. Temp	.24	@ 66
Source of Rmf / Rmc	Charts	
Rm @ BHT	.11	@ 112
Operating Rig Time	4 1/2 Hours	
Max Rec. Temp. F	112	
Equipment Number	10	
Location	Hays	
Recorded By	J. Long	
Witnessed By	Jim Musgrove	

<<< Fold Here >>>

All interpretations are opinions based on inferences from electrical or other measurements and we cannot and do not guarantee the accuracy or correctness of any interpretation, and we shall not, except in the case of gross or willful negligence on our part, be liable or responsible for any loss, costs, damages, or expenses incurred or sustained by anyone resulting from any interpretation made by any of our officers, agents or employees. These interpretations are also subject to our general terms and conditions set out in our current Price Schedule.

Comments

Thank you for using Log-Tech, Inc.
(785) 625-3858

Galatia, 2 South, 1/2 West, South Into

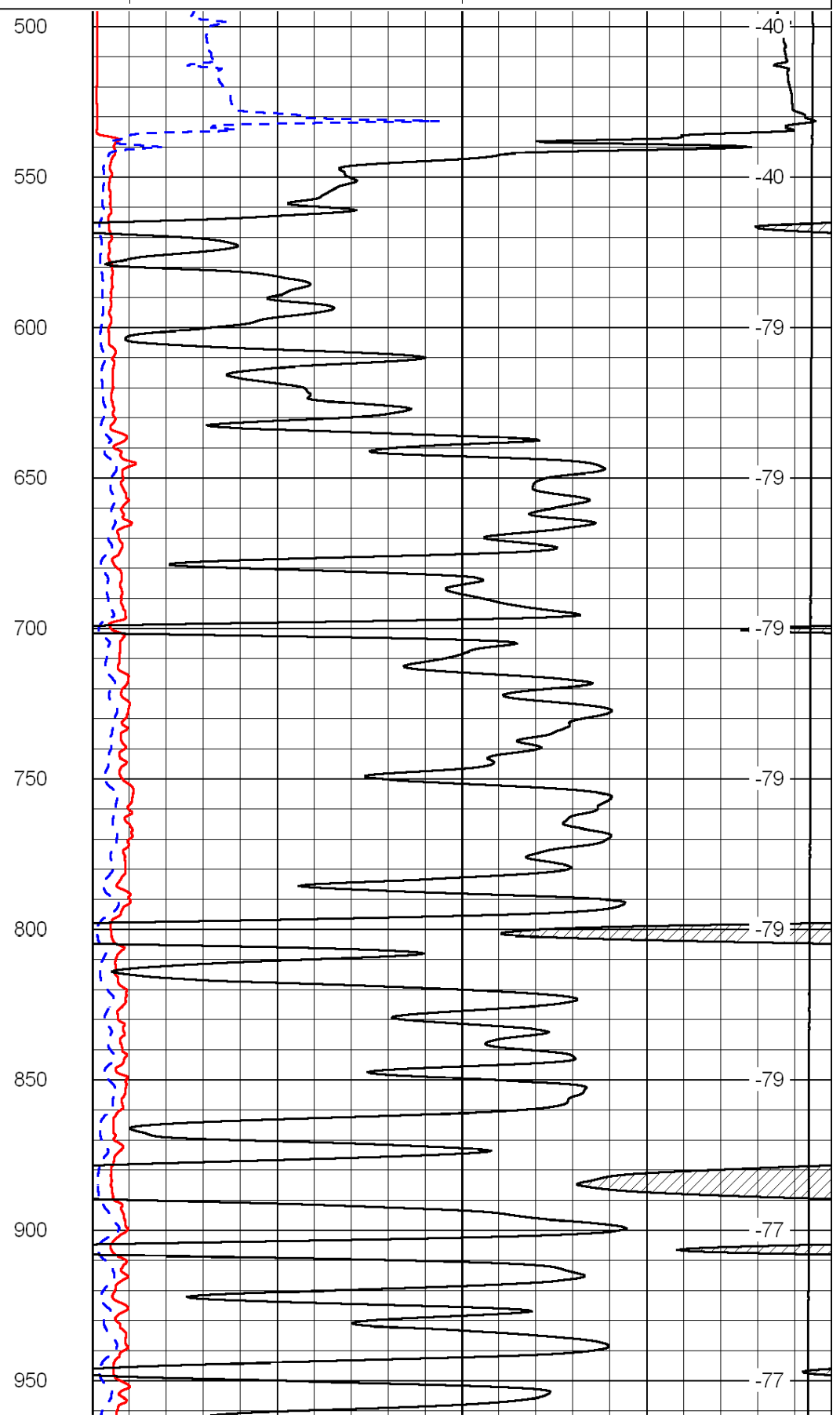
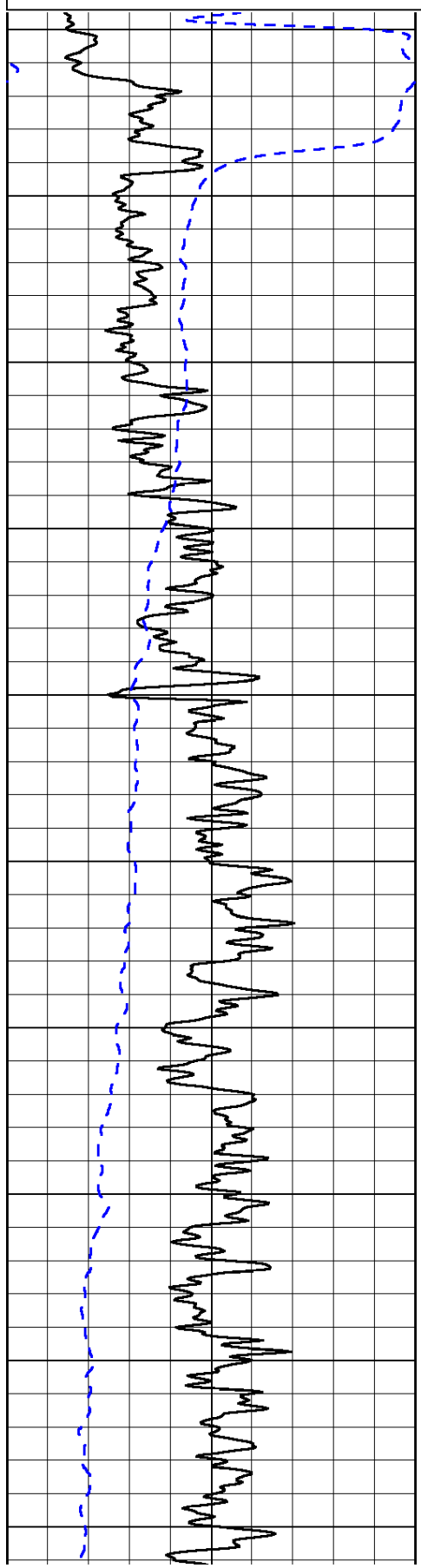
0	Gamma Ray	150
-200	SP (mV)	0

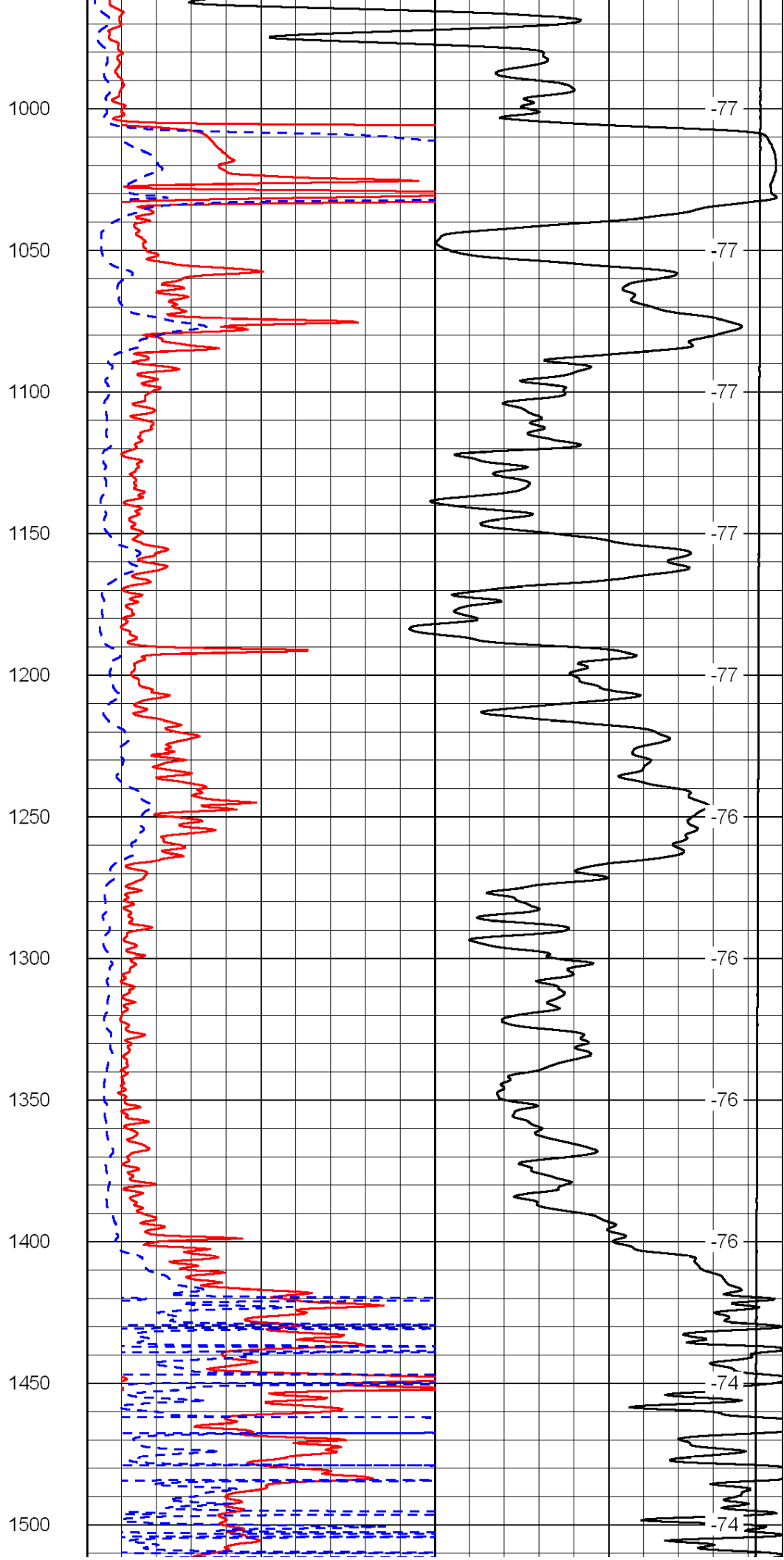
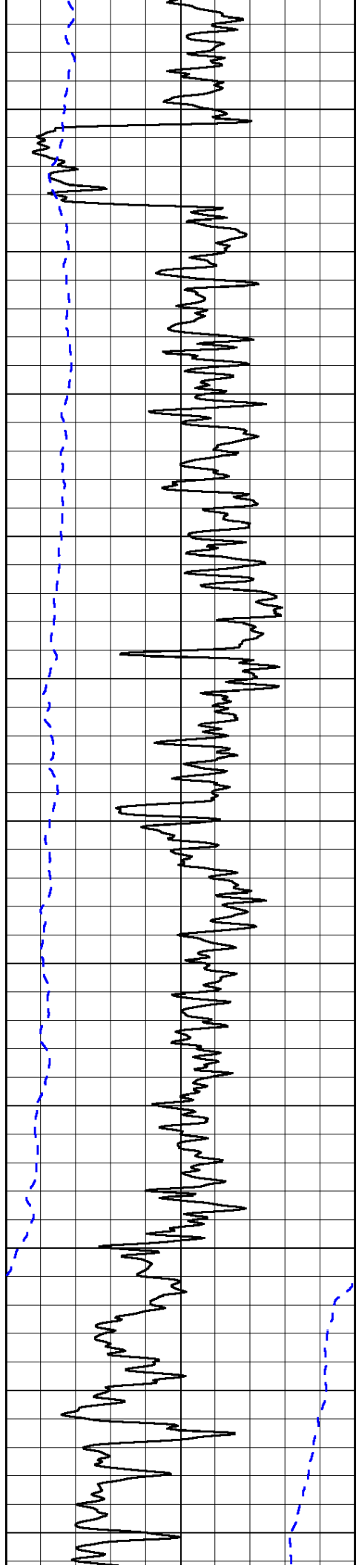
0	Shallow Resistivity	50
0	Deep Resistivity	50

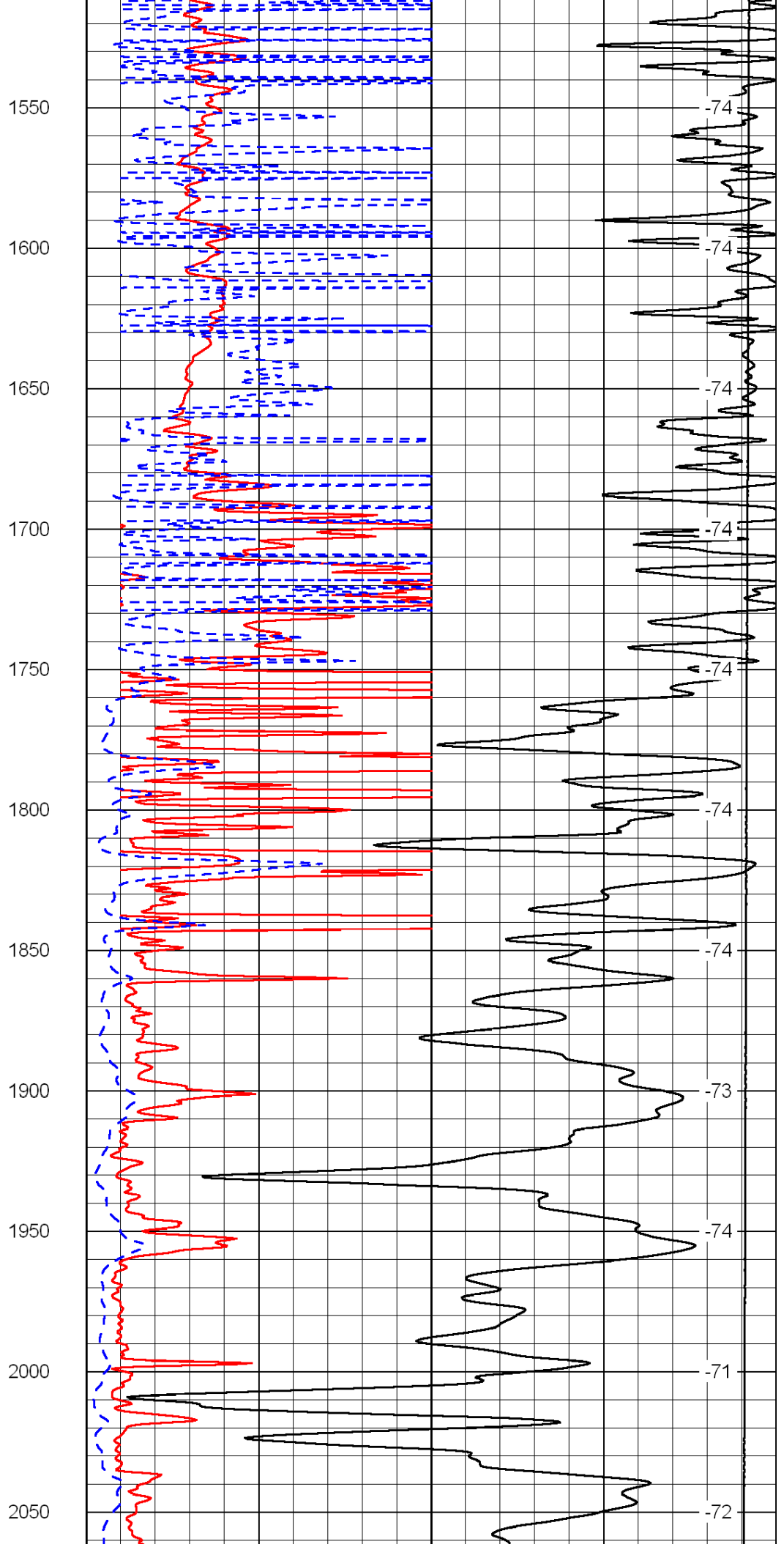
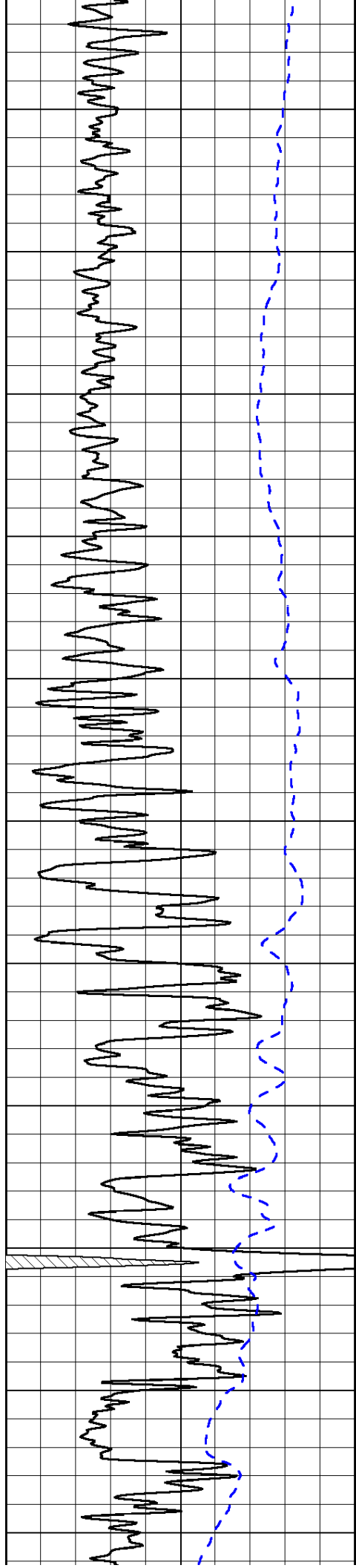
LSPD

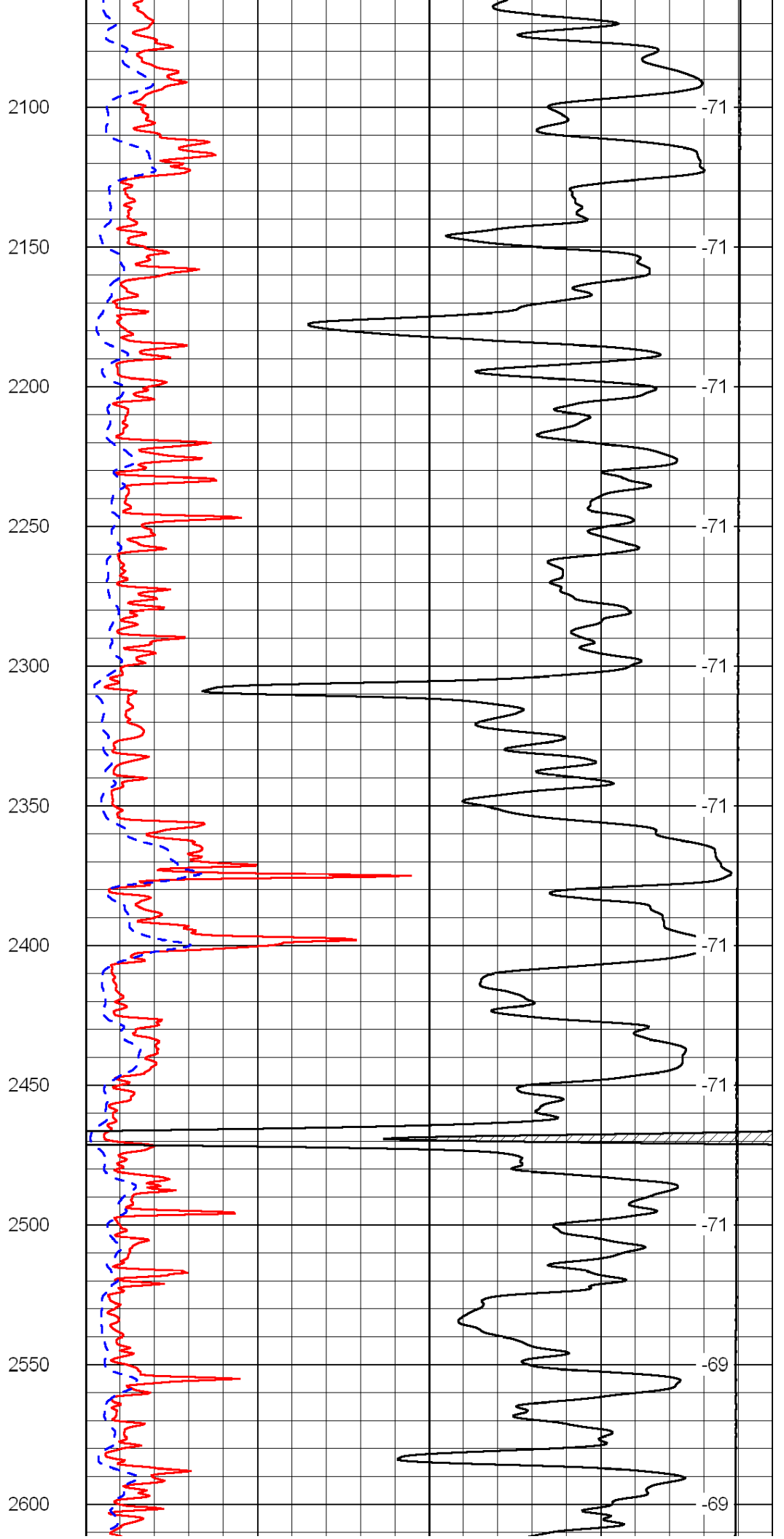
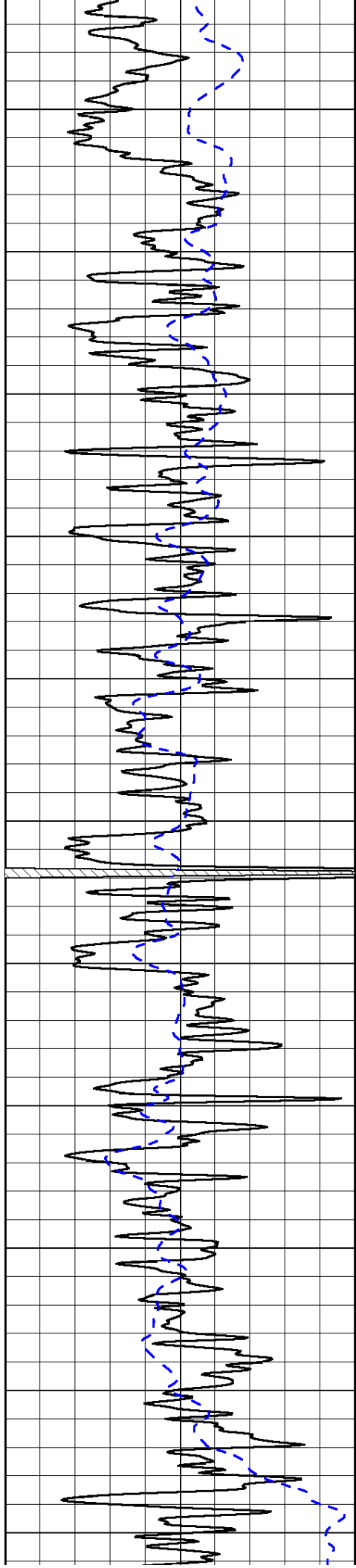
1000	Conductivity	0
15000	Line Tension	0

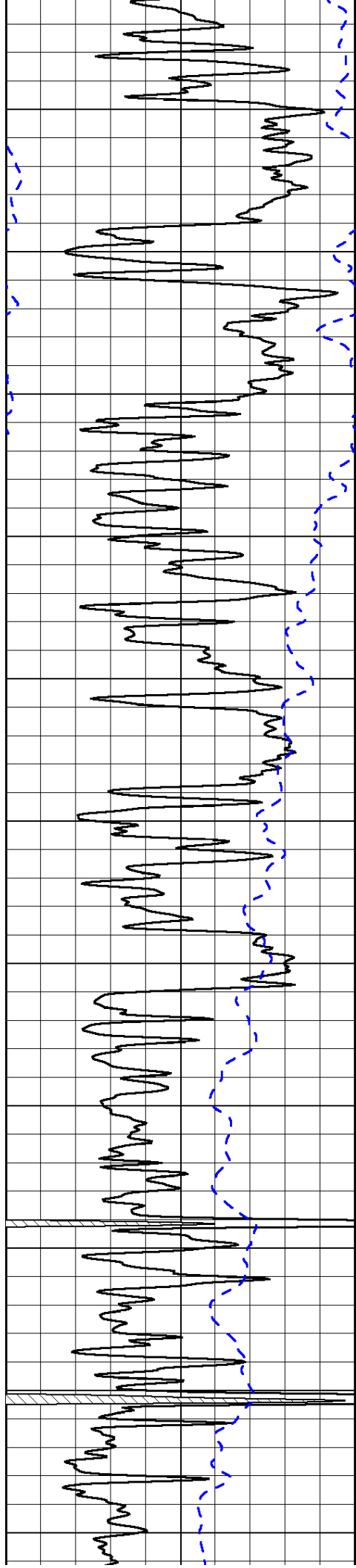
50	Shallow Resistivity	500
50	Deep Resistivity	500



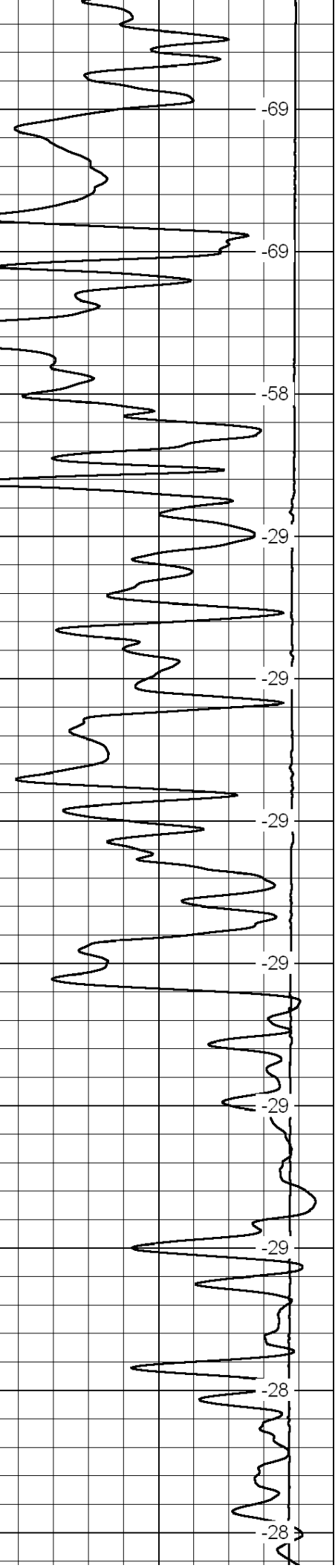
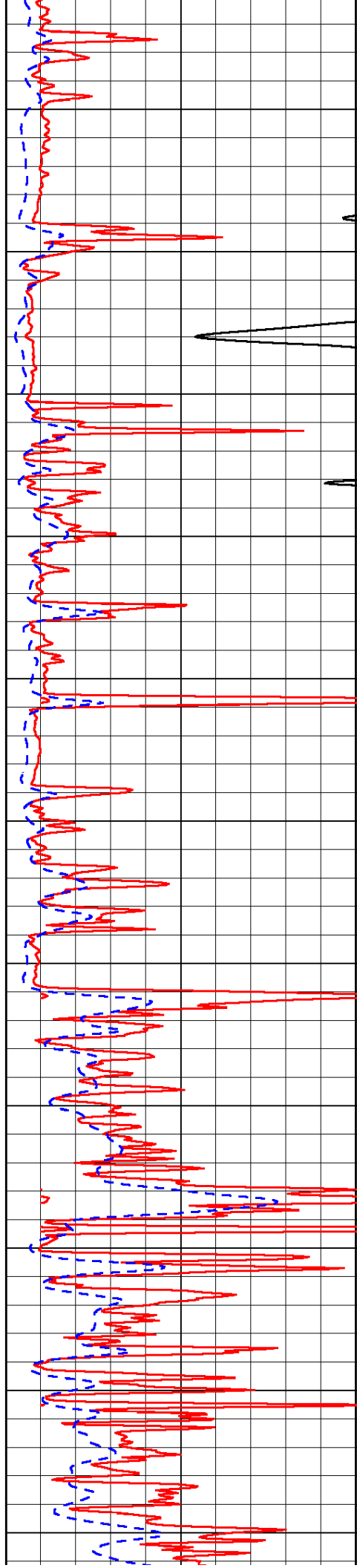




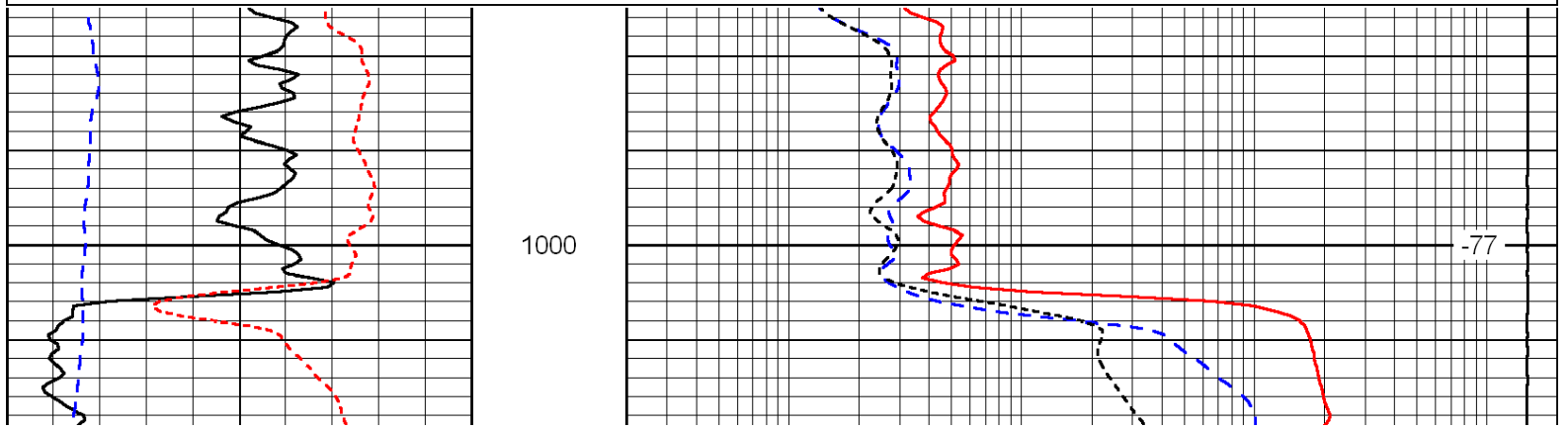
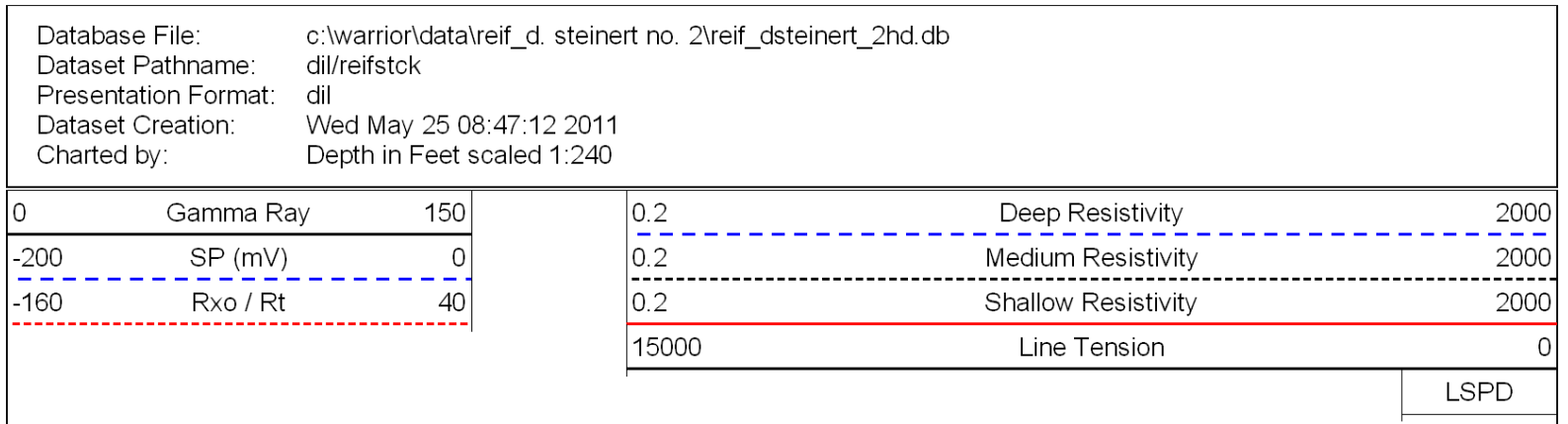
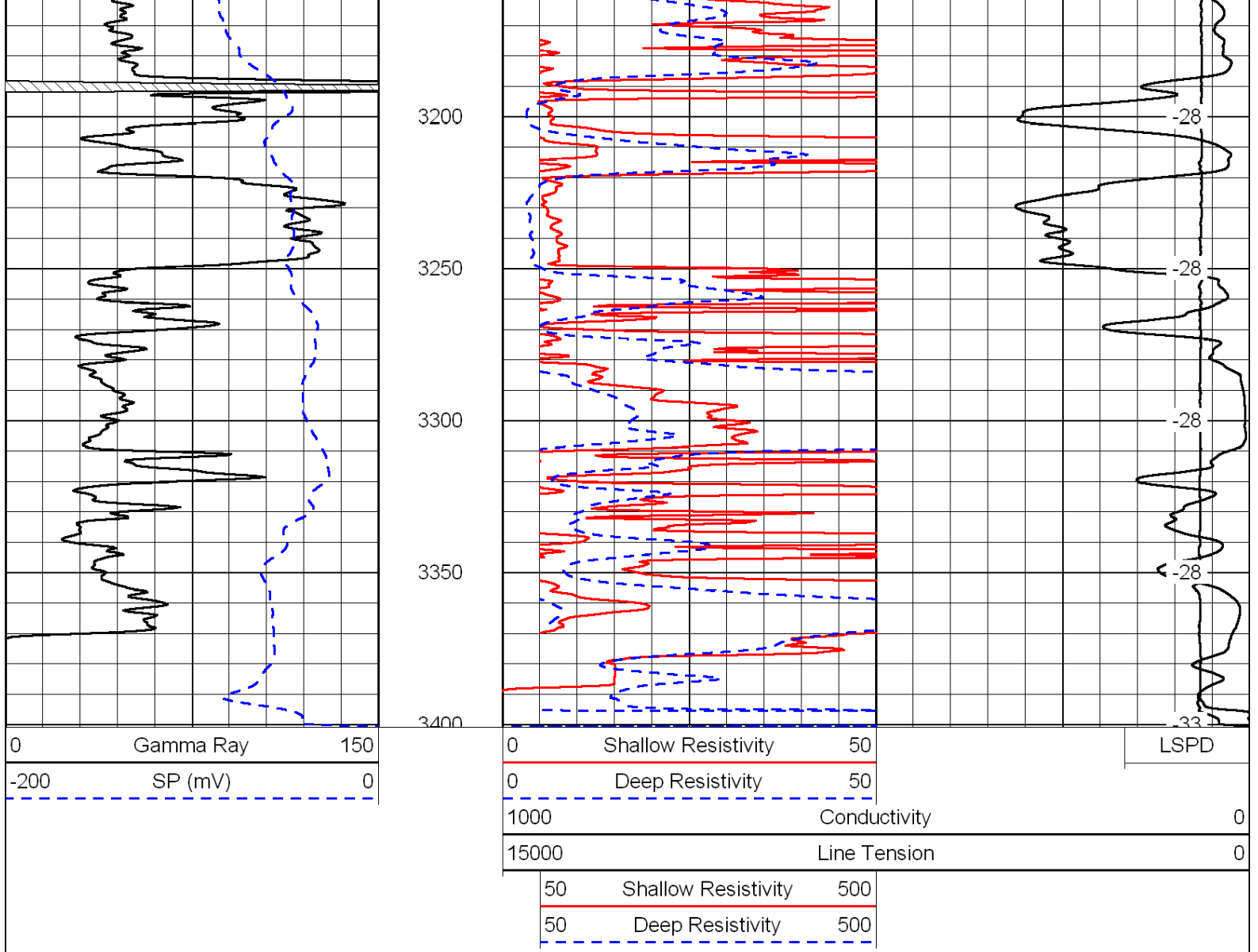


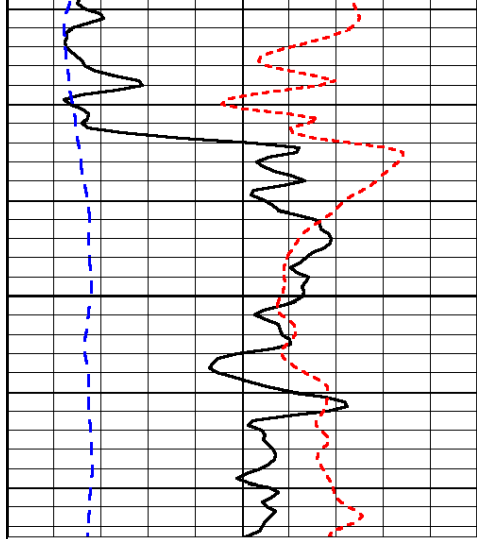


2650
2700
2750
2800
2850
2900
2950
3000
3050
3100
3150



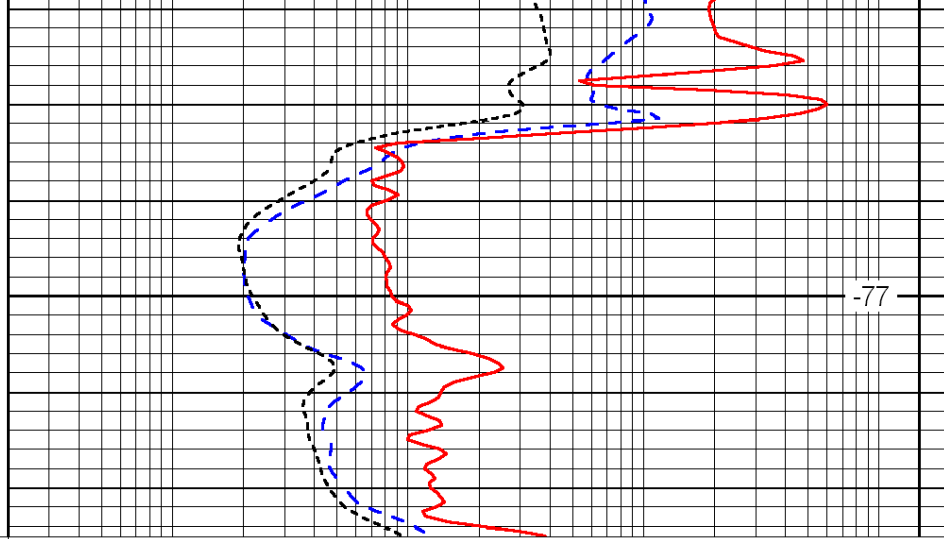
-69
-69
-58
-29
-29
-29
-29
-29
-29
-29
-28
-28





0	Gamma Ray	150
-200	SP (mV)	0
-160	Rxo / Rt	40

1050



0.2	Deep Resistivity	2000
0.2	Medium Resistivity	2000
0.2	Shallow Resistivity	2000
15000	Line Tension	0

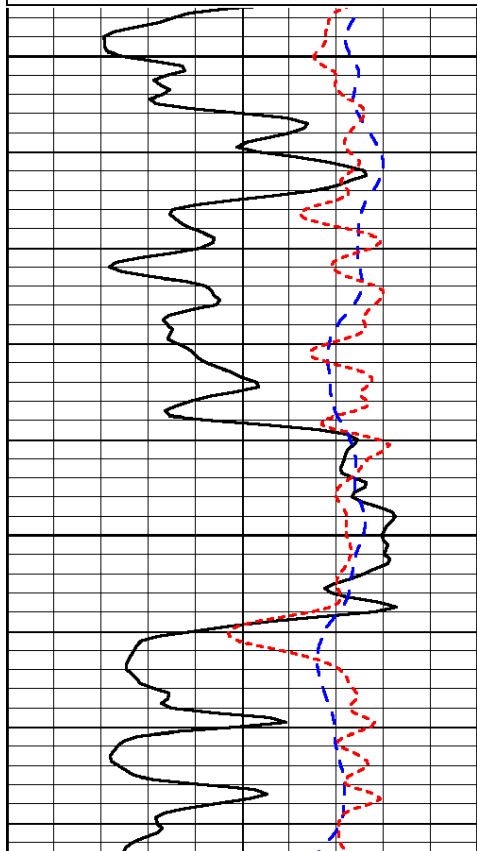
LSPD

Database File: c:\warrior\data\reif_d. steinert no. 2\reif_dsteinert_2hd.db
 Dataset Pathname: dil/reifstck
 Presentation Format: dil
 Dataset Creation: Wed May 25 08:47:12 2011
 Charted by: Depth in Feet scaled 1:240

0	Gamma Ray	150
-200	SP (mV)	0
-160	Rxo / Rt	40

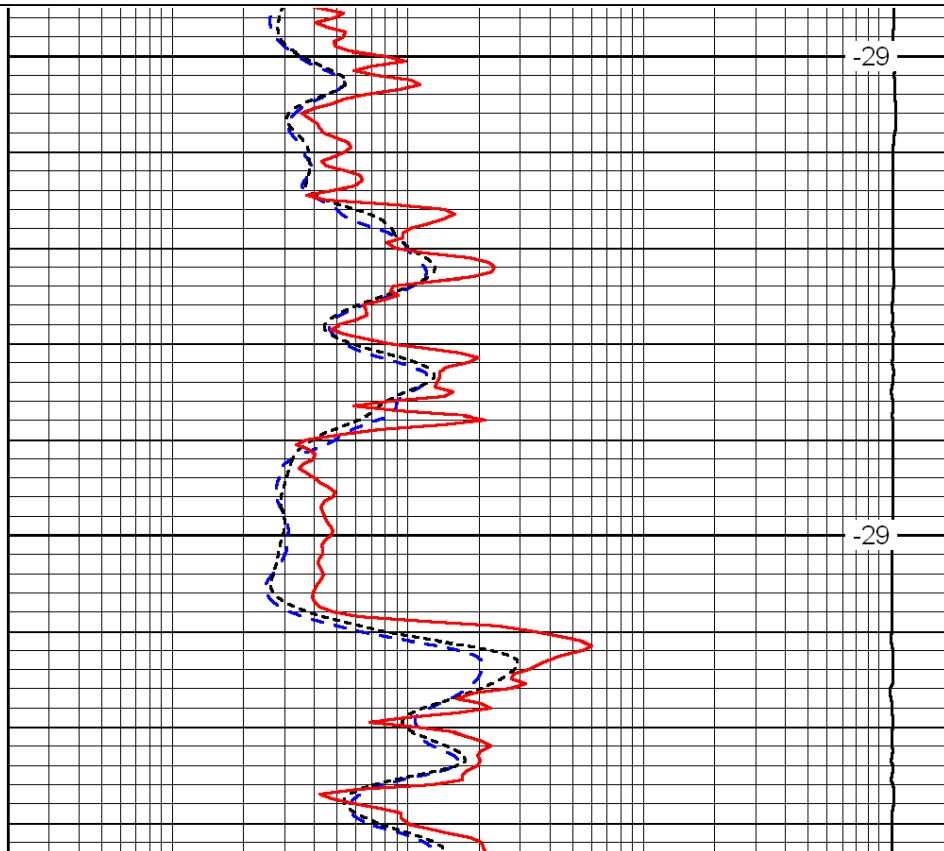
0.2	Deep Resistivity	2000
0.2	Medium Resistivity	2000
0.2	Shallow Resistivity	2000
15000	Line Tension	0

LSPD



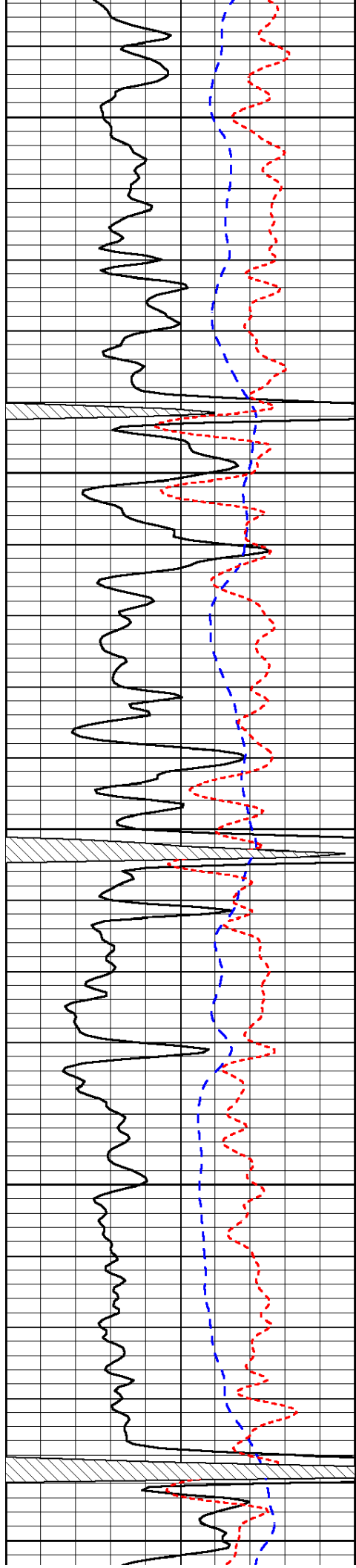
2900

2950



-29

-29



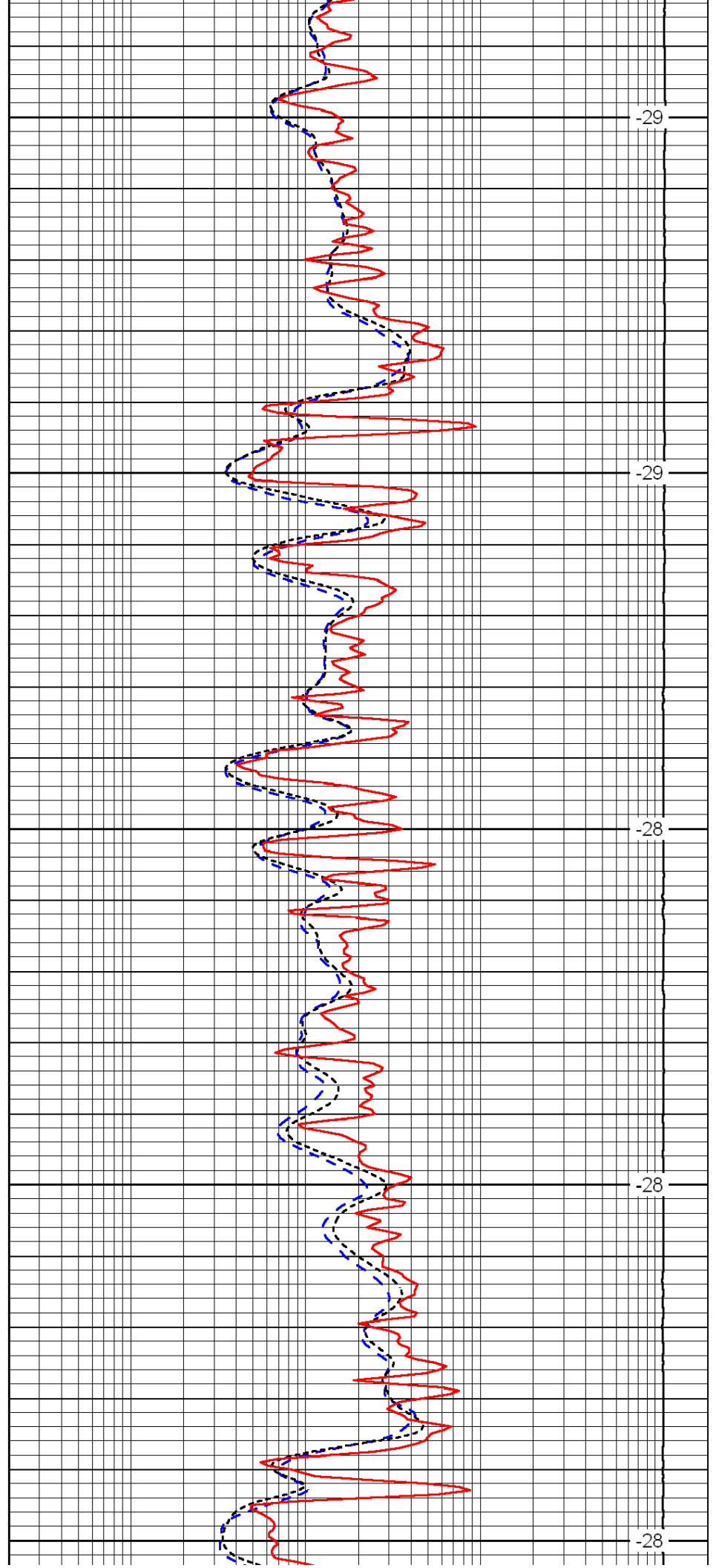
3000

3050

3100

3150

3200



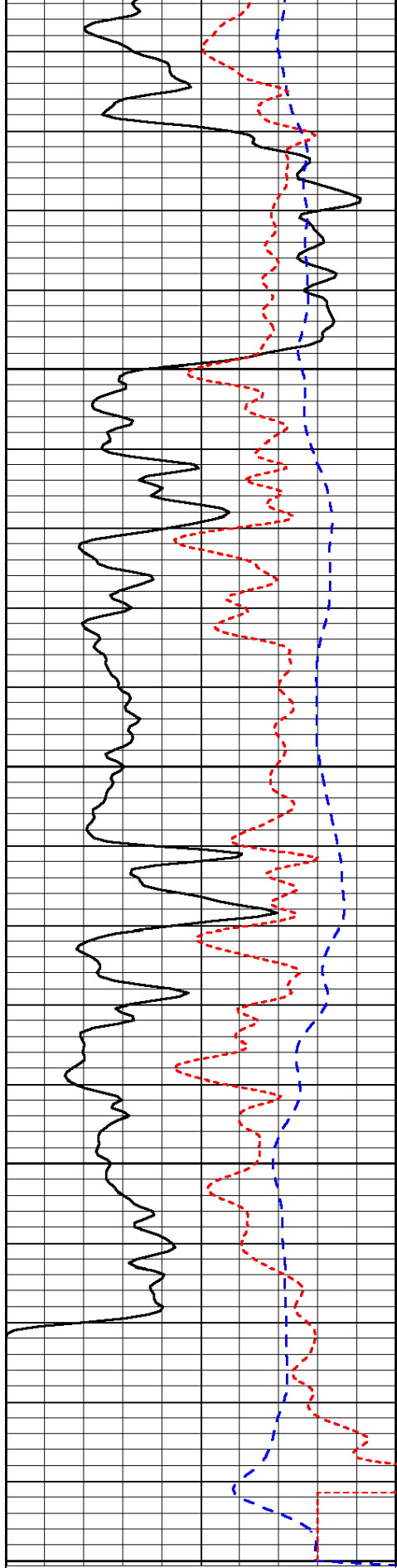
-29

-29

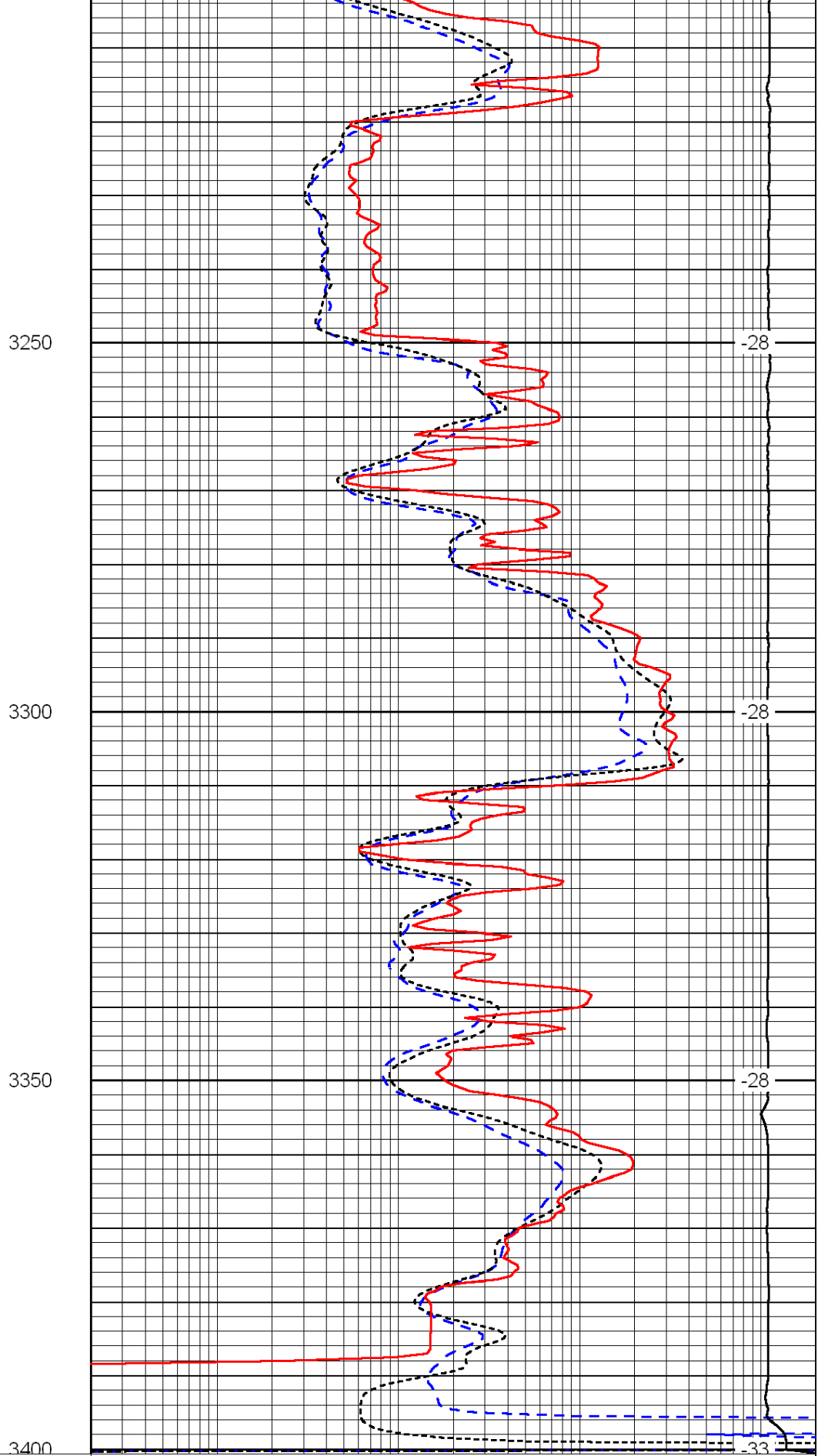
-28

-28

-28



0	Gamma Ray	150
-200	SP (mV)	0
-160	Rxo / Rt	40



0.2	Deep Resistivity	2000
0.2	Medium Resistivity	2000
0.2	Shallow Resistivity	2000
15000	Line Tension	0

