



# Microresistivity Log

**DIGITAL LOG** (785) 625-3858

API No.	15-109-21,005-00-00	
Company	Blake Exploration, LLC	
Well	Berkgren 'B' No. 1	
Field	Wildcat	
County	Logan	State
		Kansas
Location	SW SW NE SE 1634' FSL & 1178' FEL	
Sec: 8	Twp: 13 S	Rge: 33 W
Permanent Datum	Ground Level	Elevation 2980
Log Measured From	Kelly Bushing	9 Ft. Above Perm. Datum
Drilling Measured From	Kelly Bushing	
		Other Services CNL/CDL DIL
		Elevation K.B. 2889 D.F. 2980 G.L. 2980

Date	7/9/2011
Run Number	Two
Depth Driller	4600
Depth Logger	4602
Bottom Logged Interval	4601
Top Log Interval	3600
Casing Driller	8.625 @ 228
Casing Logger	220
Bit Size	7.875
Type Fluid in Hole	Chemical
Salinity, ppm CL	7700
Density / Viscosity	9.4 50
pH / Fluid Loss	10 8.8
Source of Sample	Flowline
Rm @ Meas. Temp	.40 @ 80
Rmf @ Meas. Temp	.30 @ 80
Rmc @ Meas. Temp	.54 @ 80
Source of Rmf / Rmc	Charts
Rm @ BHT	.26 @ 122
Operating Rig Time	4 Hours
Max Rec. Temp. F	122
Equipment Number	10
Location	Hays
Recorded By	D.Kerr
Witnessed By	Mike Davignon

<<< Fold Here >>>

All interpretations are opinions based on inferences from electrical or other measurements and we cannot and do not guarantee the accuracy or correctness of any interpretation, and we shall not, except in the case of gross or willful negligence on our part, be liable or responsible for any loss, costs, damages, or expenses incurred or sustained by anyone resulting from any interpretation made by any of our officers, agents or employees. These interpretations are also subject to our general terms and conditions set out in our current Price Schedule.

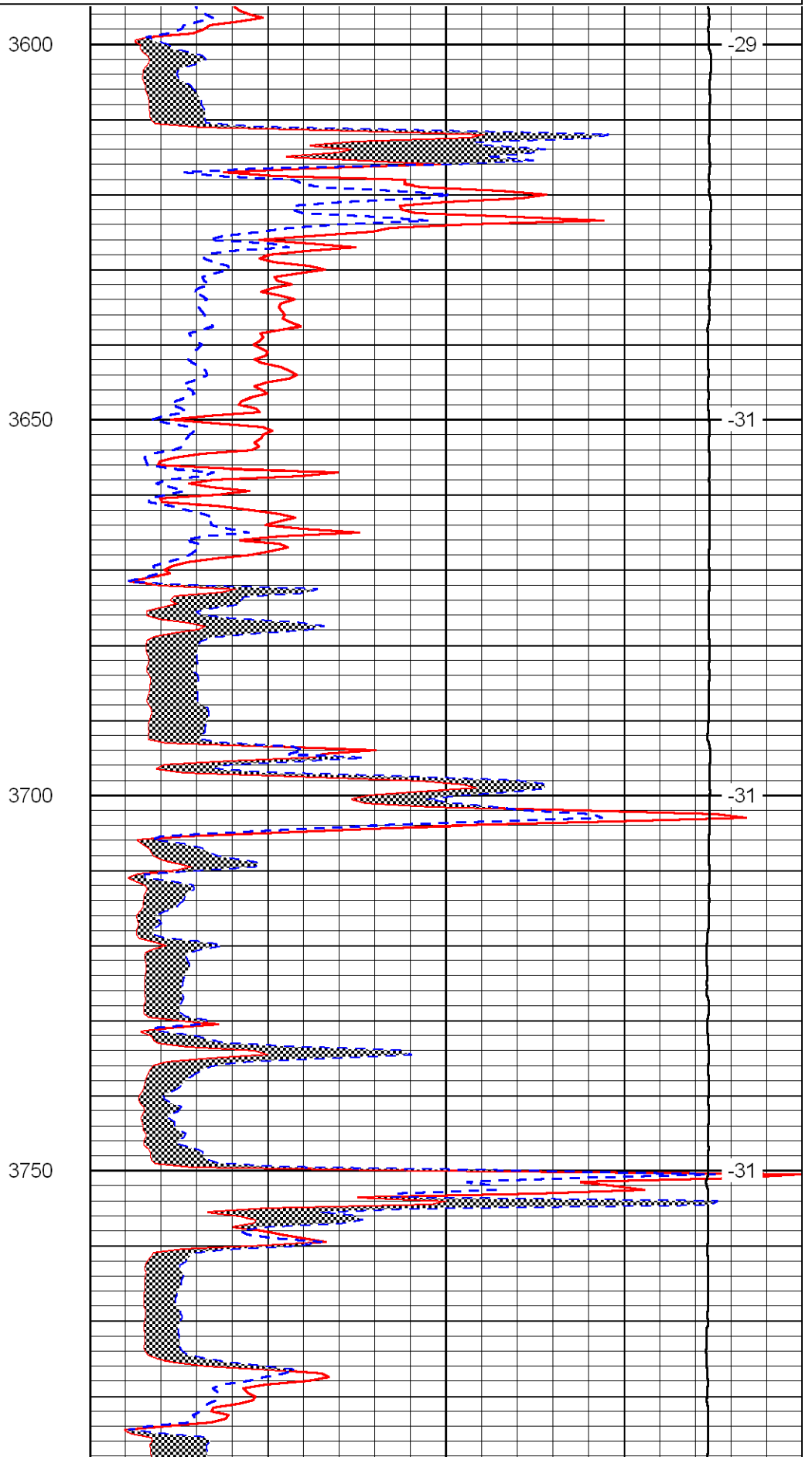
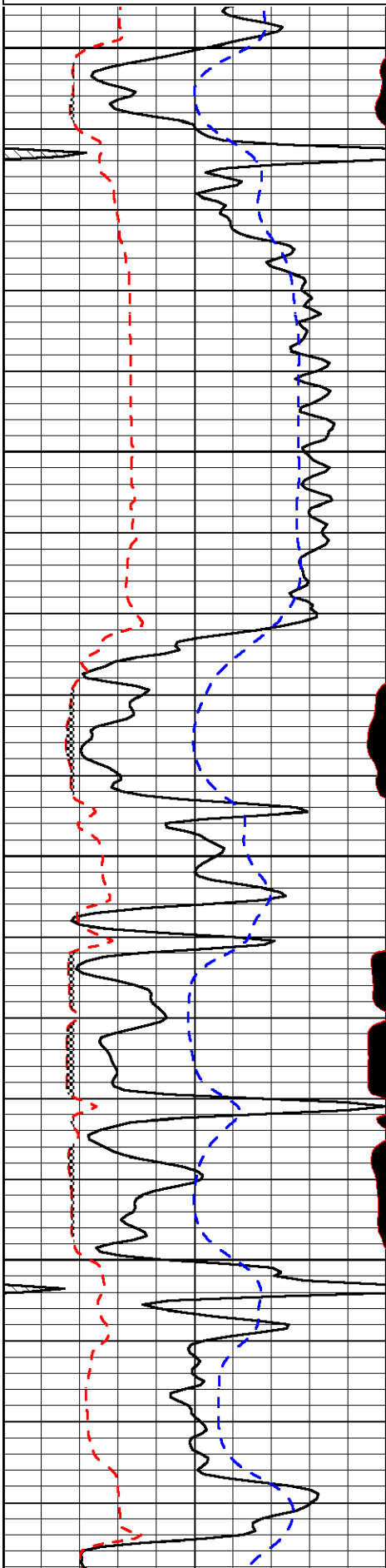
### Comments

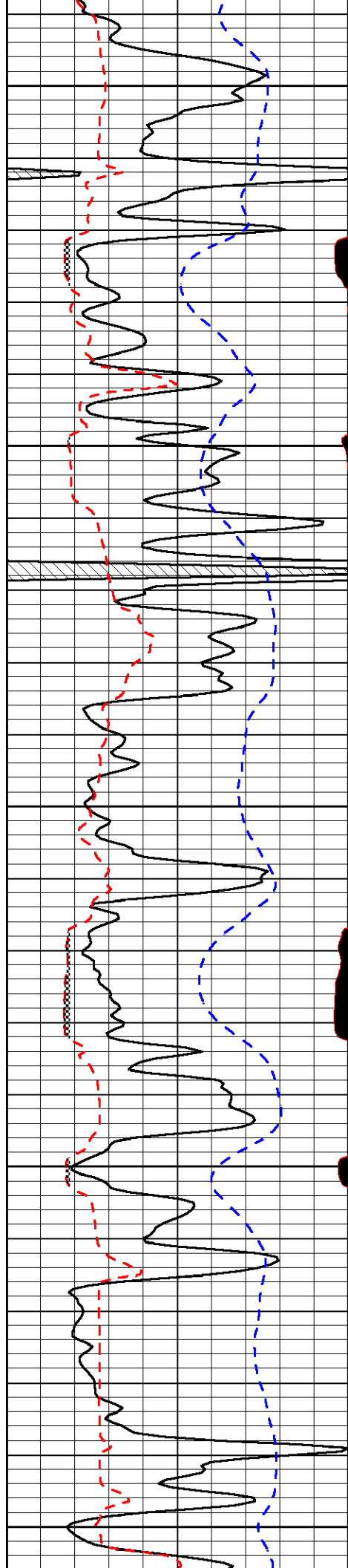
Thank you for using Log-Tech, Inc.  
 (785) 625-3858  
  
 Monument KS, West Side of town,  
 13 South on 350th RD, 3/4 West, North Into

Database File:	blakeexp_berkgren_b_1hd.db
Dataset Pathname:	dil/blkstk
Presentation Format:	micro
Dataset Creation:	Sat Jul 09 11:16:10 2011
Charted by:	Depth in Feet scaled 1:240

0	Gamma Ray	150
6	MCAL (GAPI)	16
2.875	Mud Cake (GAPI)	7.875
-200	SP	0

0	Micro Inverse 1 X 1	40
0	Micro Normal 2"	40
10000	Line Weight	0
		LSPD





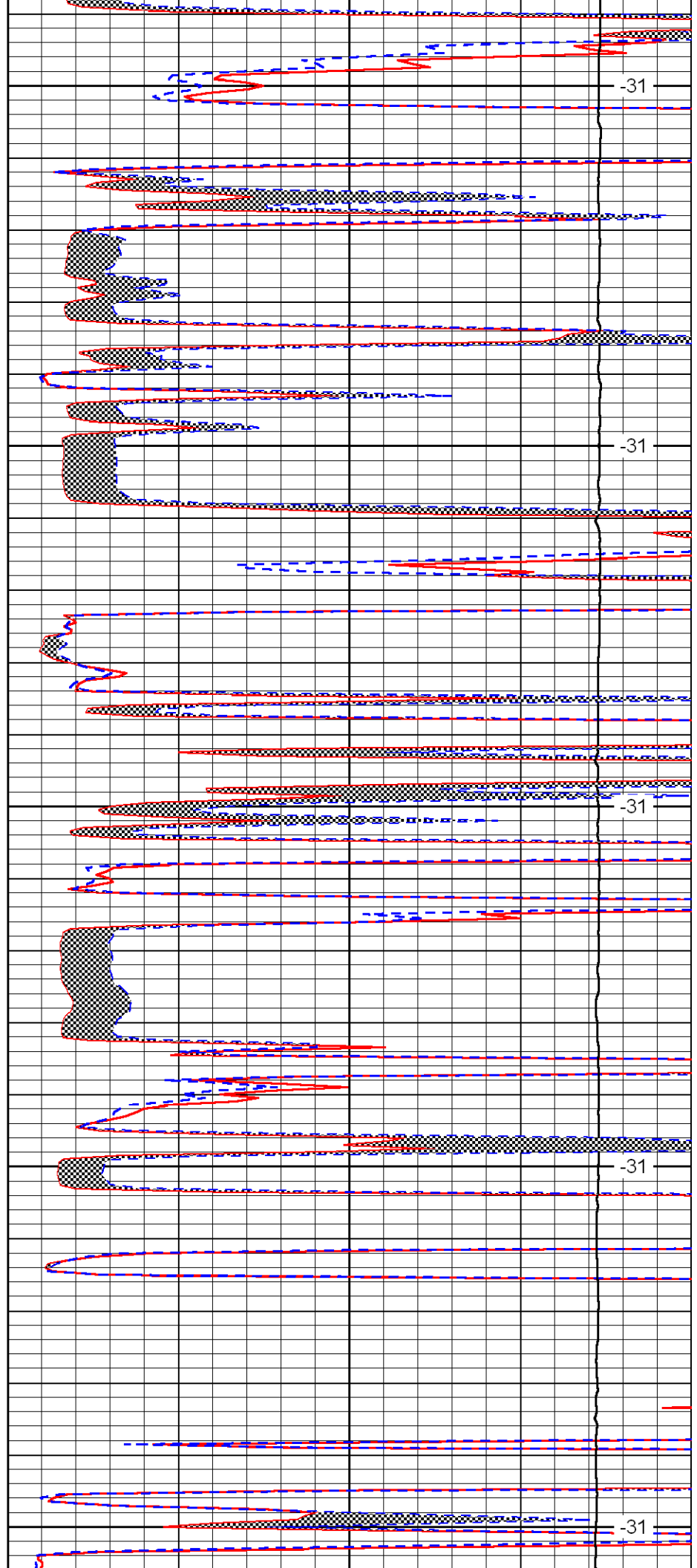
3800

3850

3900

3950

4000



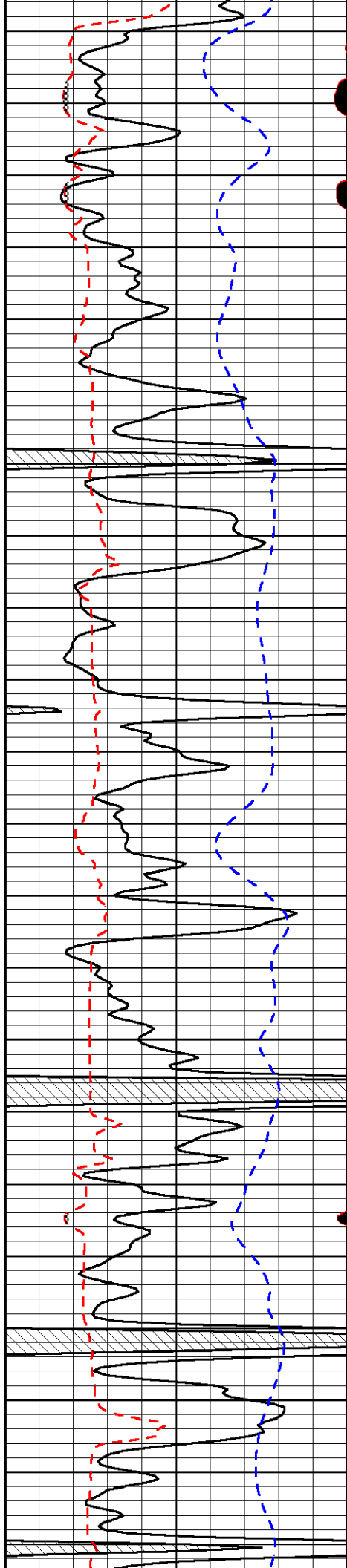
-31

-31

-31

-31

-31

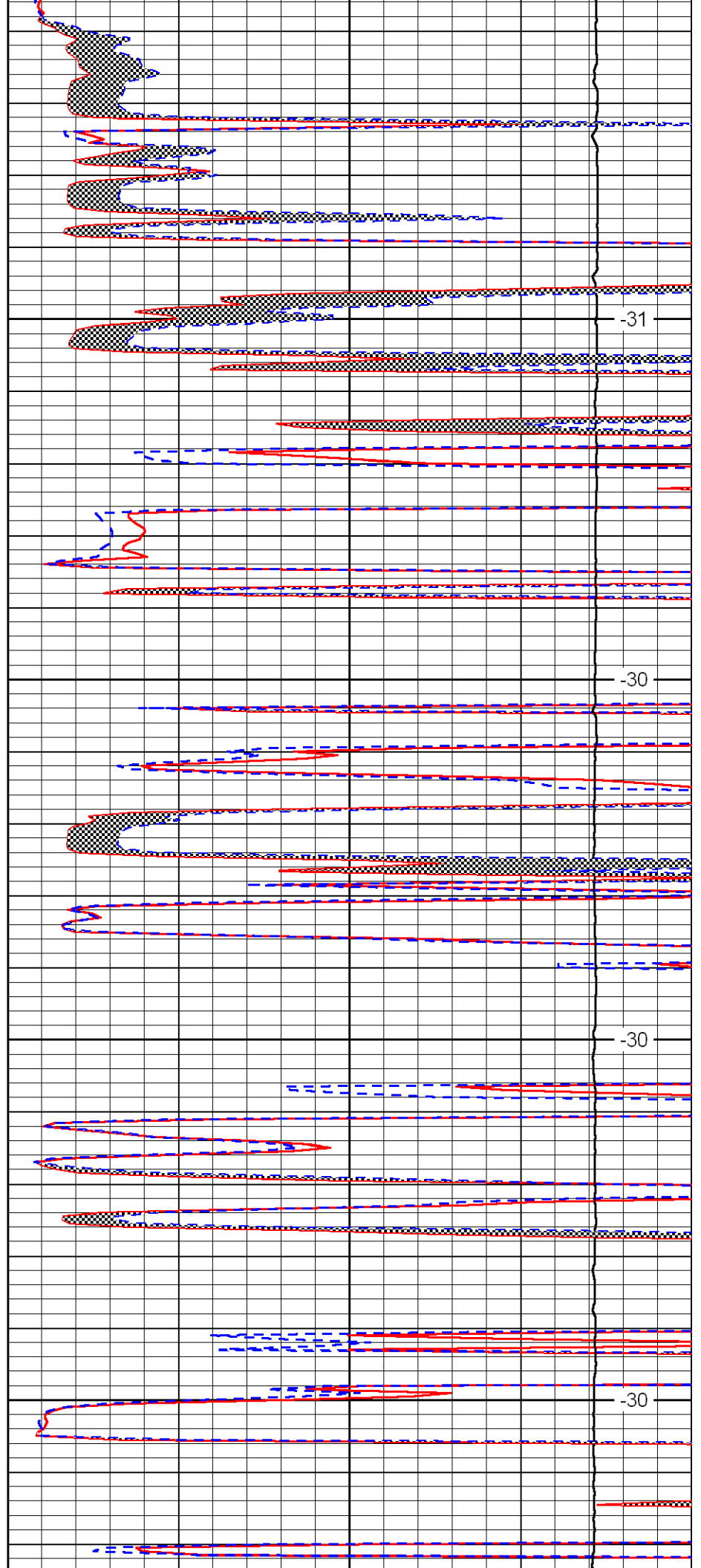


4050

4100

4150

4200

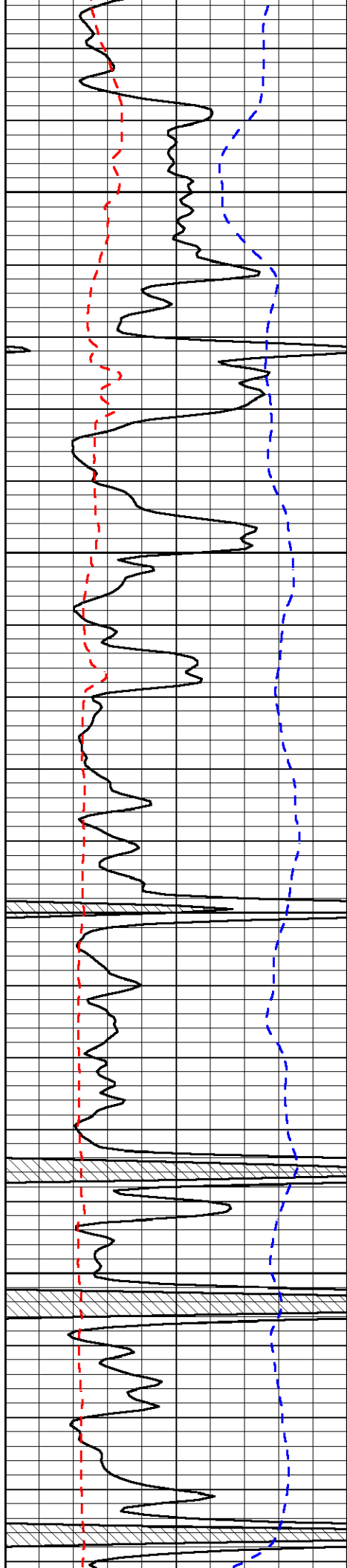


-31

-30

-30

-30

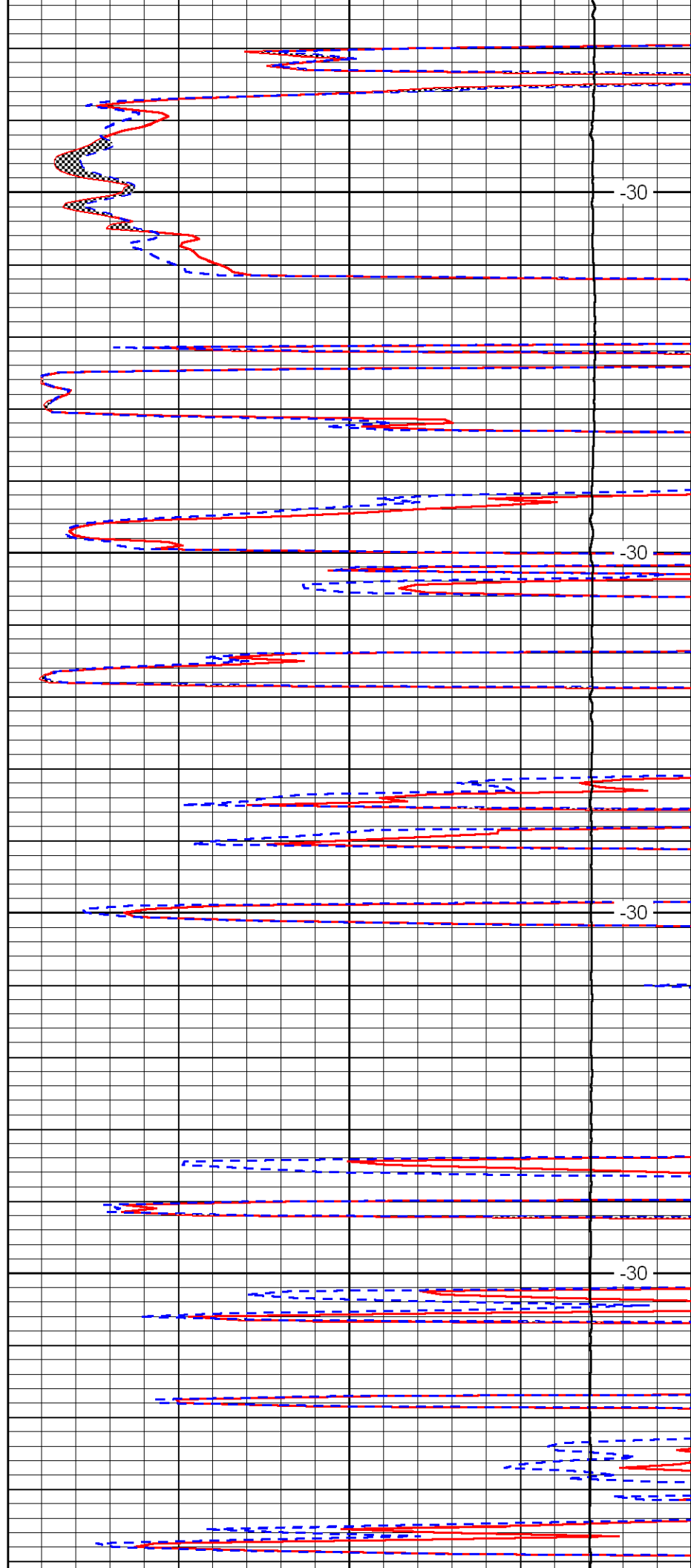


4250

4300

4350

4400



-30

-30

-30

-30

