



Dual Induction Log

DIGITAL LOG (785) 625-3858

API No.	15-109-21,005-00-00	
Company	Blake Exploration, LLC	
Well	Berkgren 'B' No. 1	
Field	Wildcat	
County	Logan	State Kansas
Location	SW SW NE SE 1634' FSL & 1178' FEL	
Sec: 8	Twp: 13 S	Rge: 33 W
Permanent Datum	Ground Level	Elevation 2980
Log Measured From	Kelly Bushing	9 Ft. Above Perm. Datum
Drilling Measured From	Kelly Bushing	
		Other Services CNL/CDL MEL
		Elevation K.B. 2889 D.F. 2980 G.L. 2980

Date	7/9/2011
Run Number	One
Depth Driller	4600
Depth Logger	4602
Bottom Logged Interval	4601
Top Log Interval	200
Casing Driller	8.625 @ 228
Casing Logger	220
Bit Size	7.875
Type Fluid in Hole	Chemical
Salinity, ppm CL	7700
Density / Viscosity	9.4 50
pH / Fluid Loss	10 8.8
Source of Sample	Flowline
Rm @ Meas. Temp	.40 @ 80
Rmf @ Meas. Temp	.30 @ 80
Rmc @ Meas. Temp	.54 @ 80
Source of Rmf / Rmc	Charts
Rm @ BHT	.26 @ 122
Operating Rig Time	4 Hours
Max Rec. Temp. F	122
Equipment Number	10
Location	Hays
Recorded By	D.Kerr
Witnessed By	Mike Davignon

<<< Fold Here >>>

All interpretations are opinions based on inferences from electrical or other measurements and we cannot and do not guarantee the accuracy or correctness of any interpretation, and we shall not, except in the case of gross or willful negligence on our part, be liable or responsible for any loss, costs, damages, or expenses incurred or sustained by anyone resulting from any interpretation made by any of our officers, agents or employees. These interpretations are also subject to our general terms and conditions set out in our current Price Schedule.

Comments

Thank you for using Log-Tech, Inc.
 (785) 625-3858

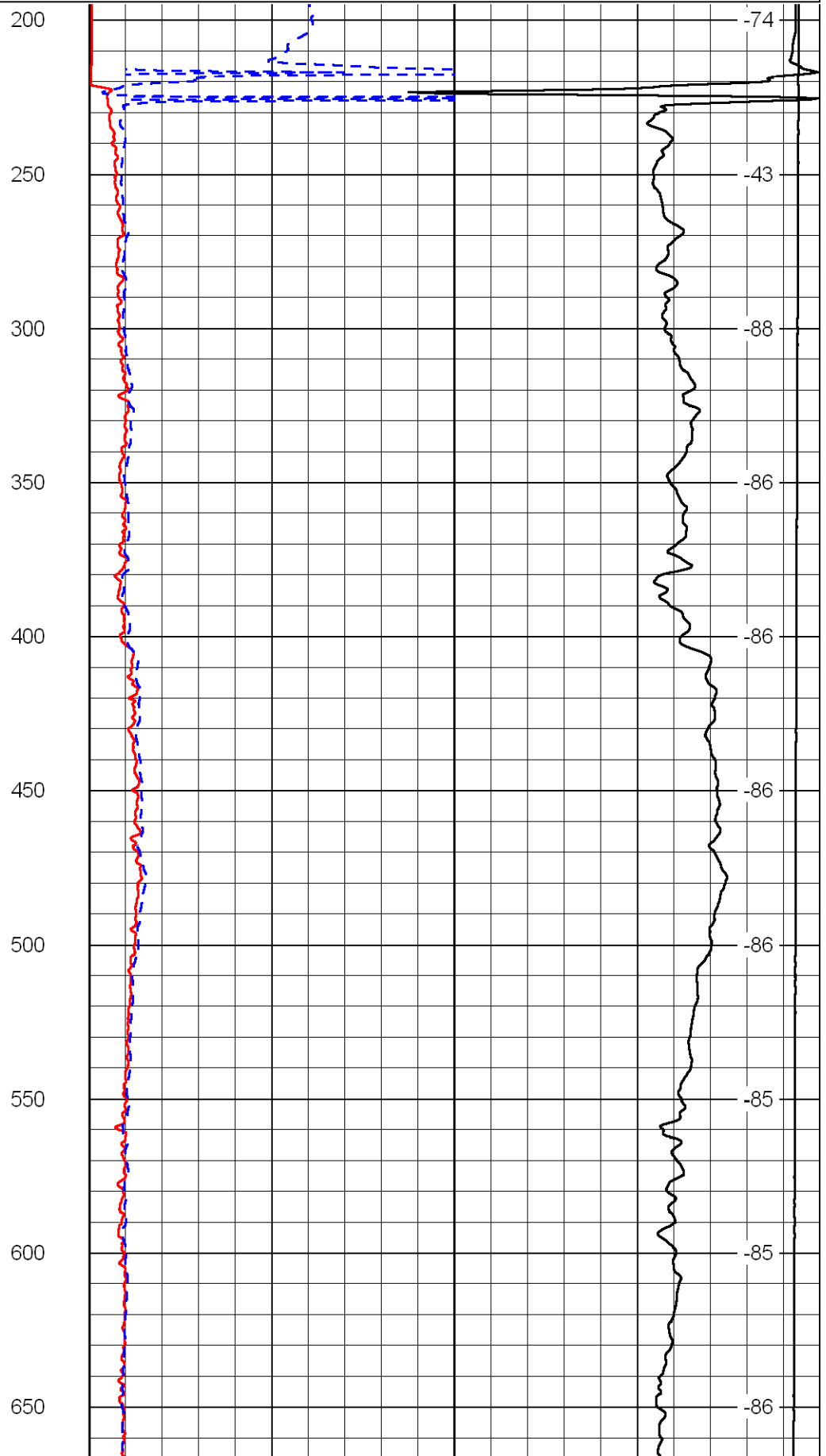
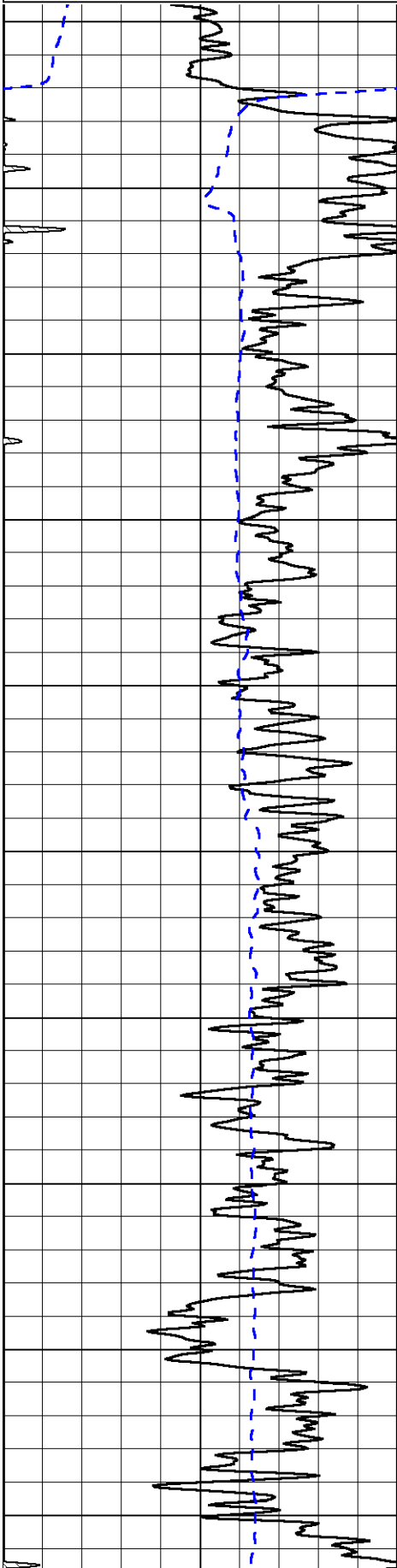
 Monument KS, West Side of town,
 13 South on 350th RD, 3/4 West, North Into

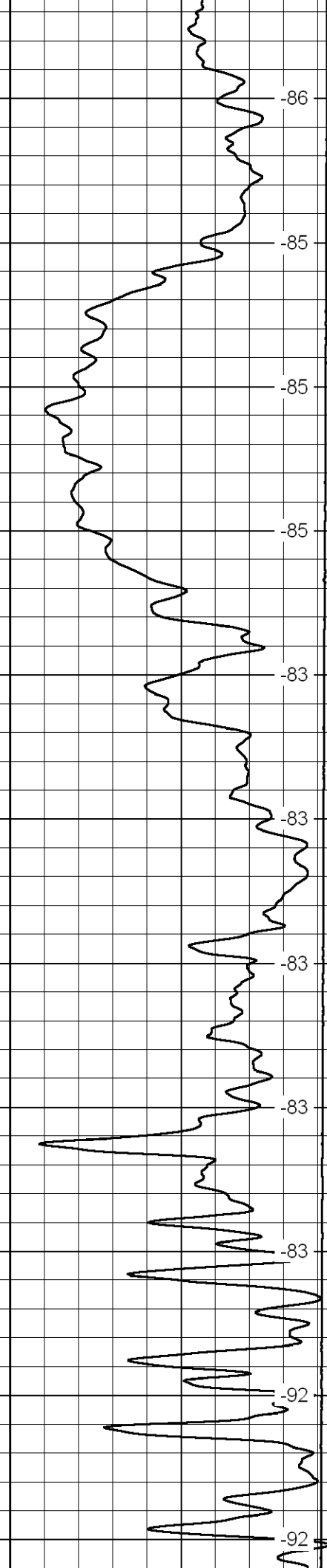
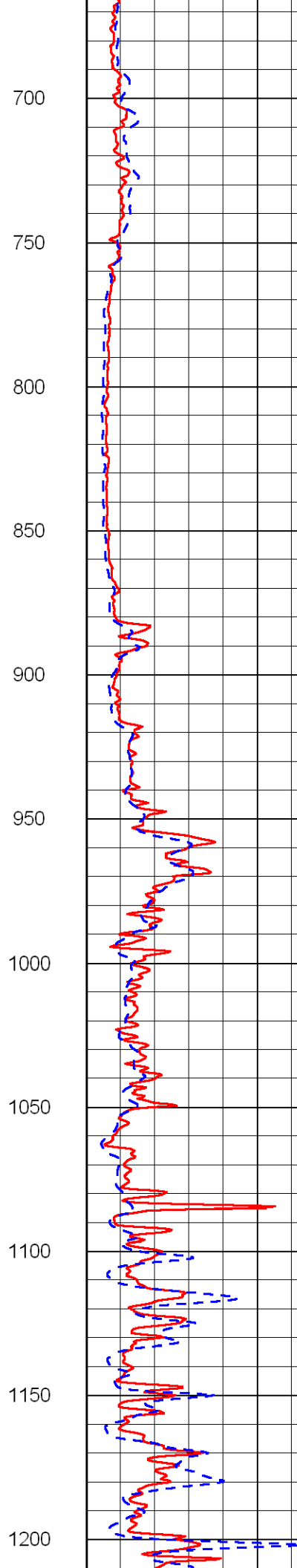
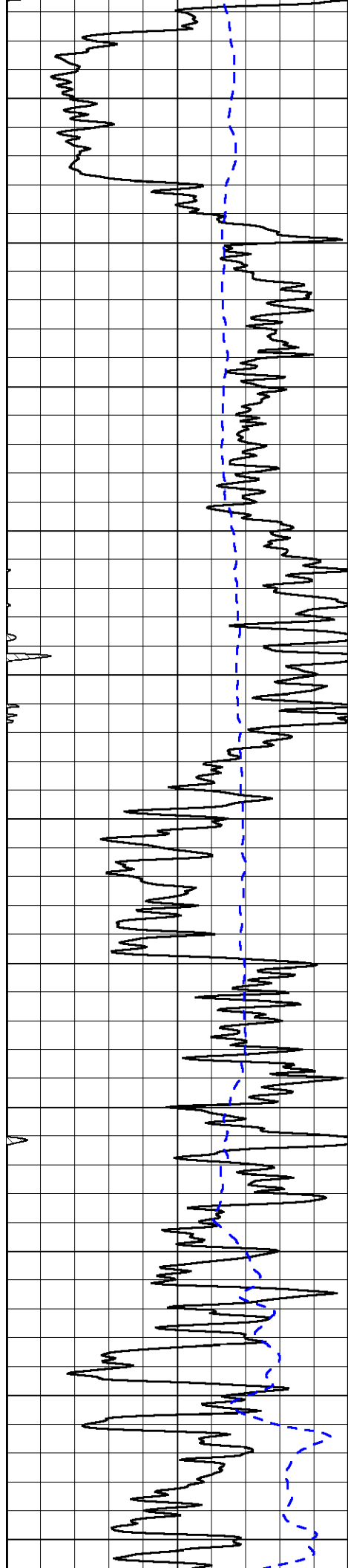
Database File: blakeexp_berkgren_b_1hd.db
 Dataset Pathname: dil/blkstk
 Presentation Format: dil2in
 Dataset Creation: Sat Jul 09 11:16:10 2011
 Charted by: Depth in Feet scaled 1:600

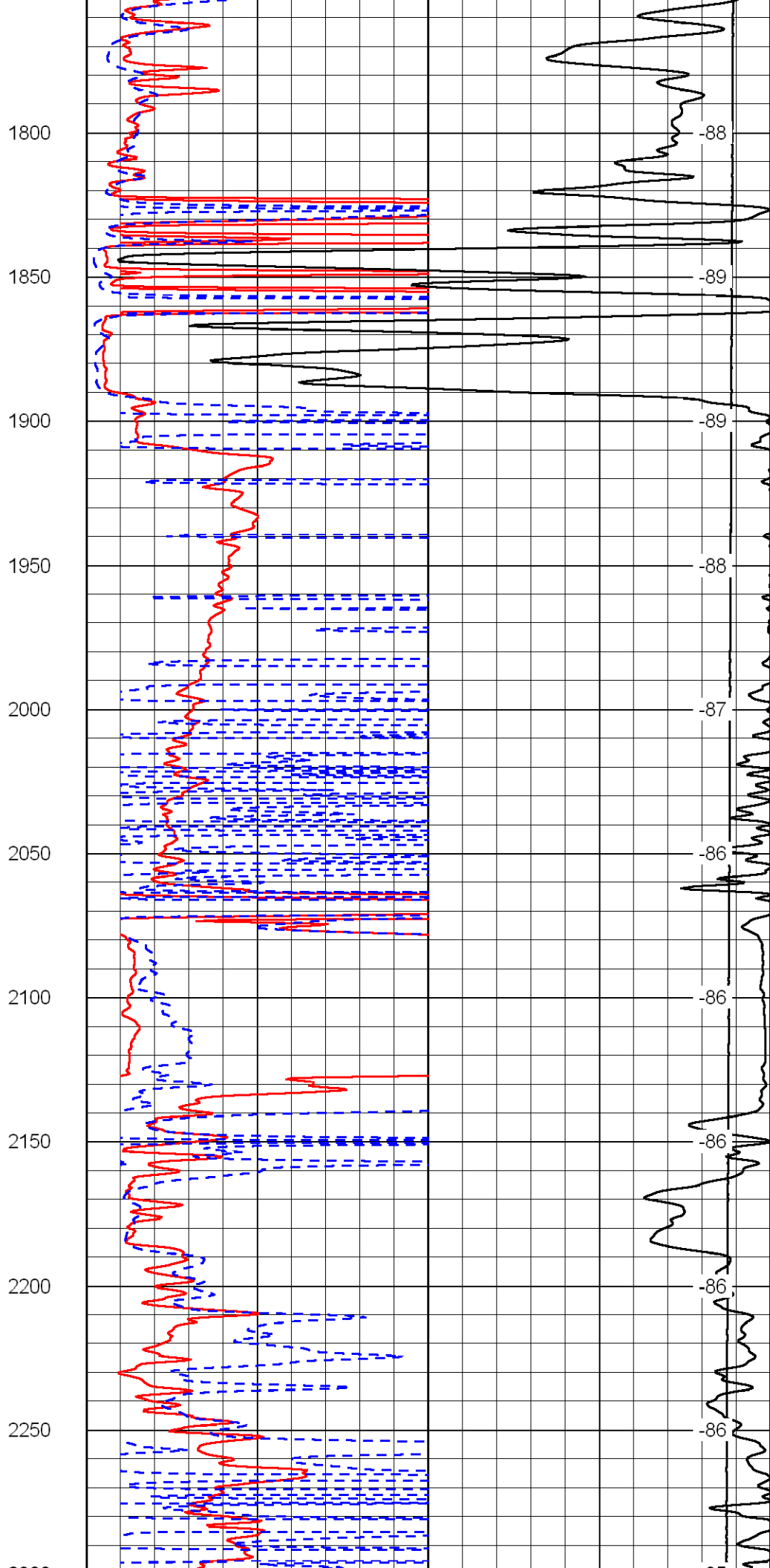
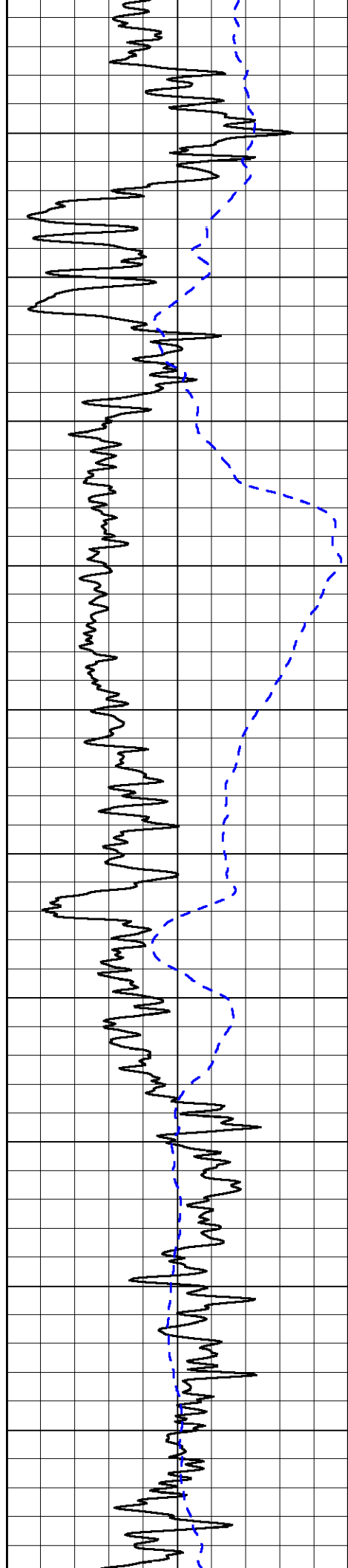
0 Gamma Ray 150
-200 SP 0

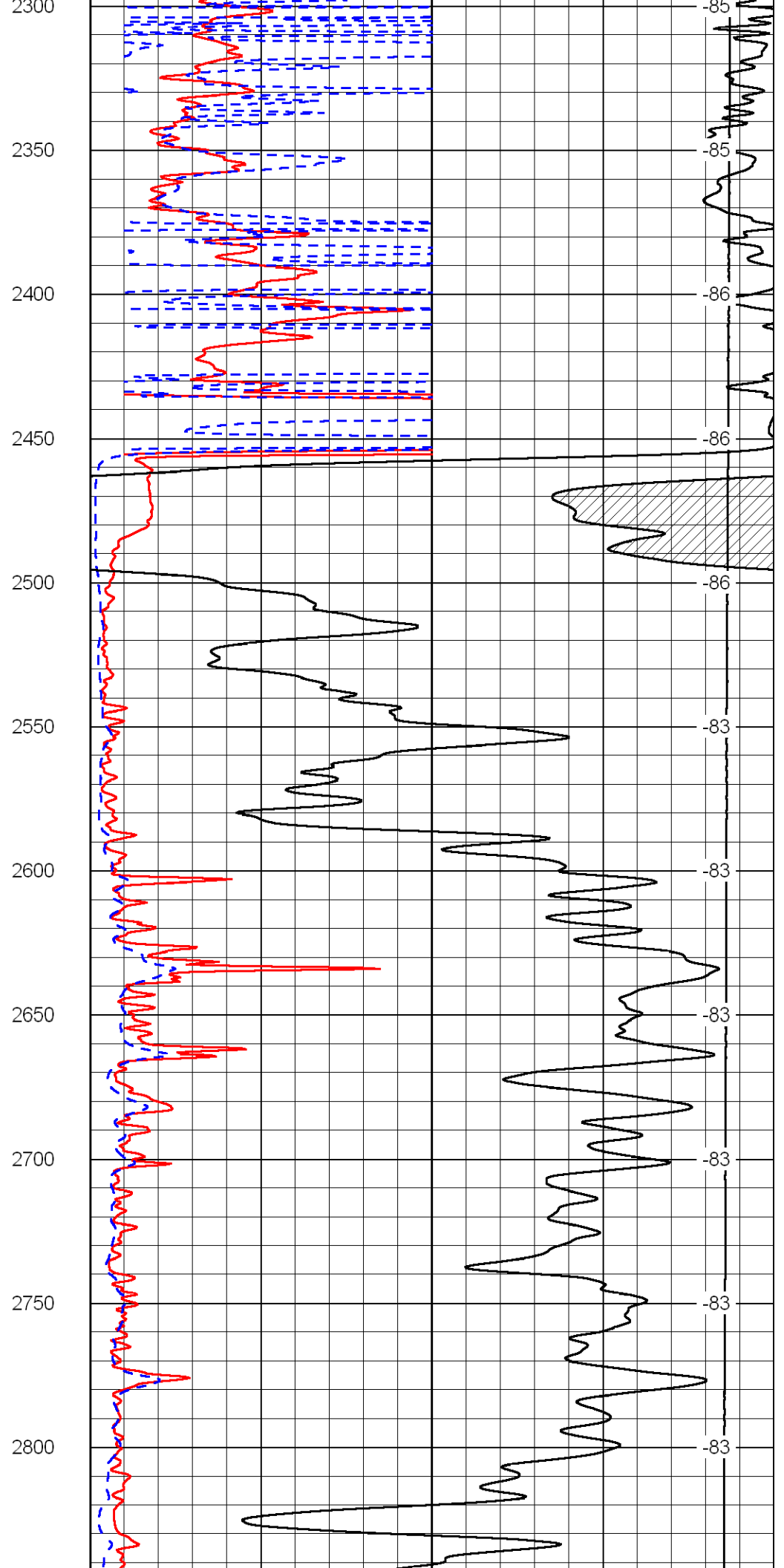
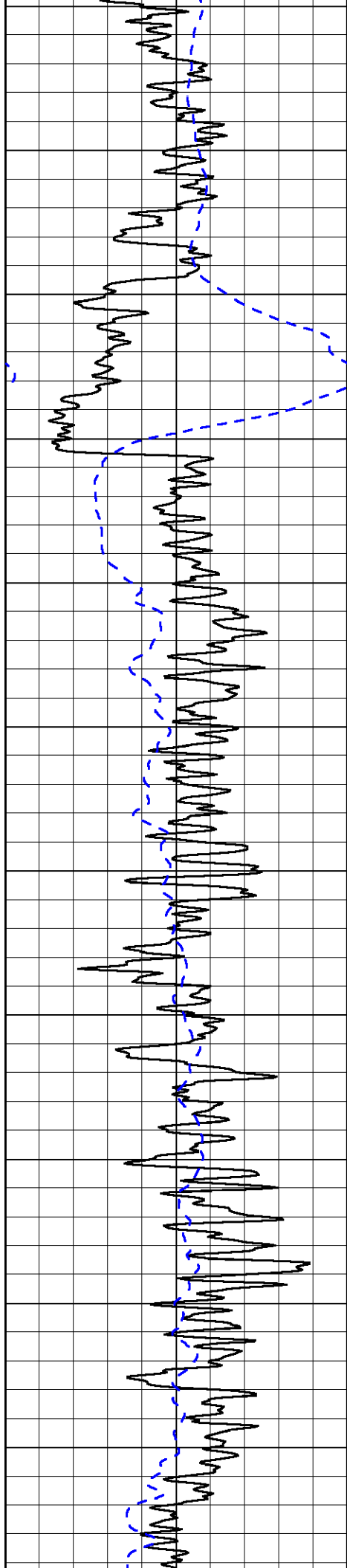
0 Shallow Resistivity 50
0 Deep Resistivity 50
1000 Conductivity 0
15000 Line Tension 0
50 Shallow Resistivity 500
50 Deep Resistivity 500

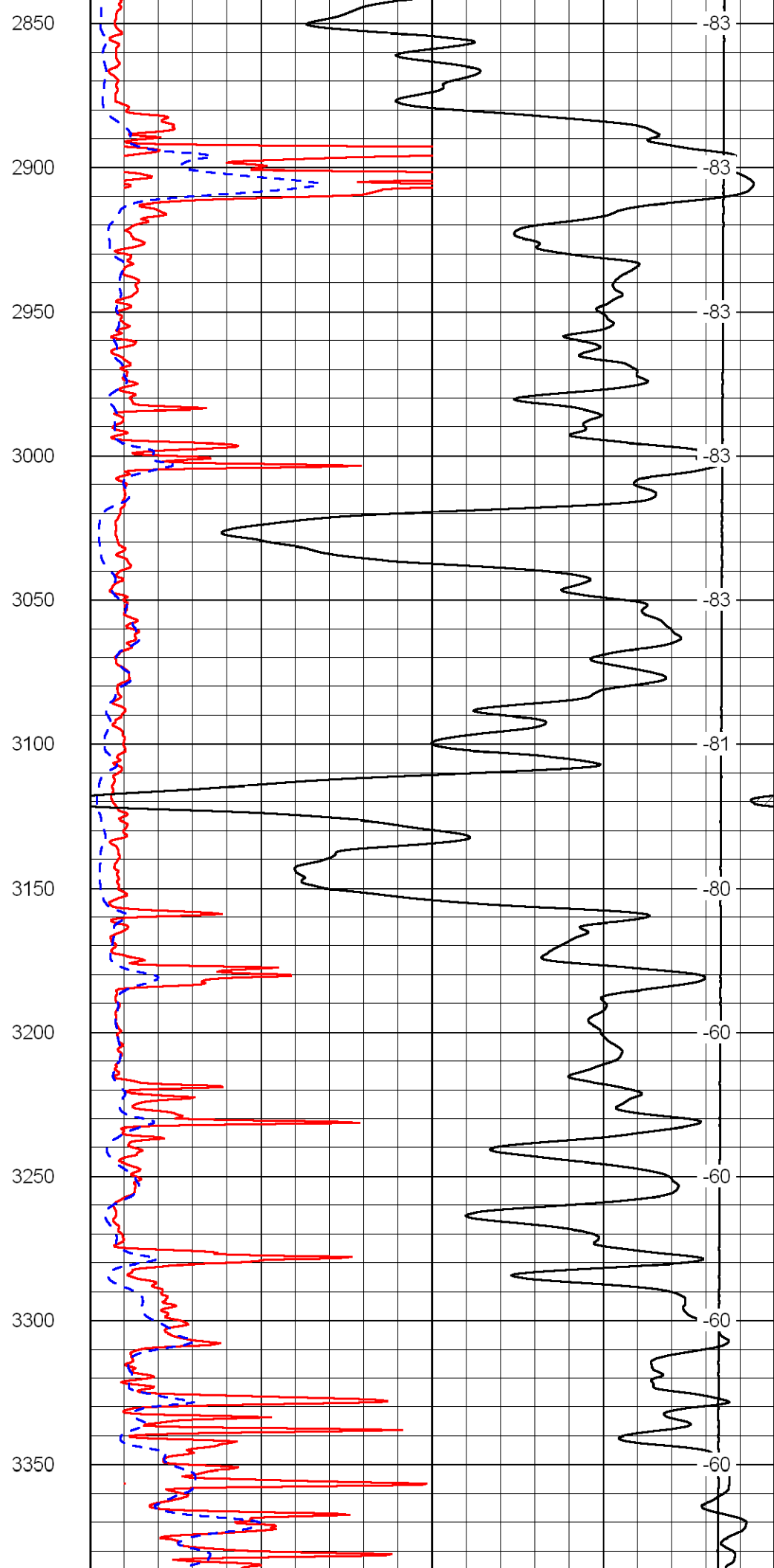
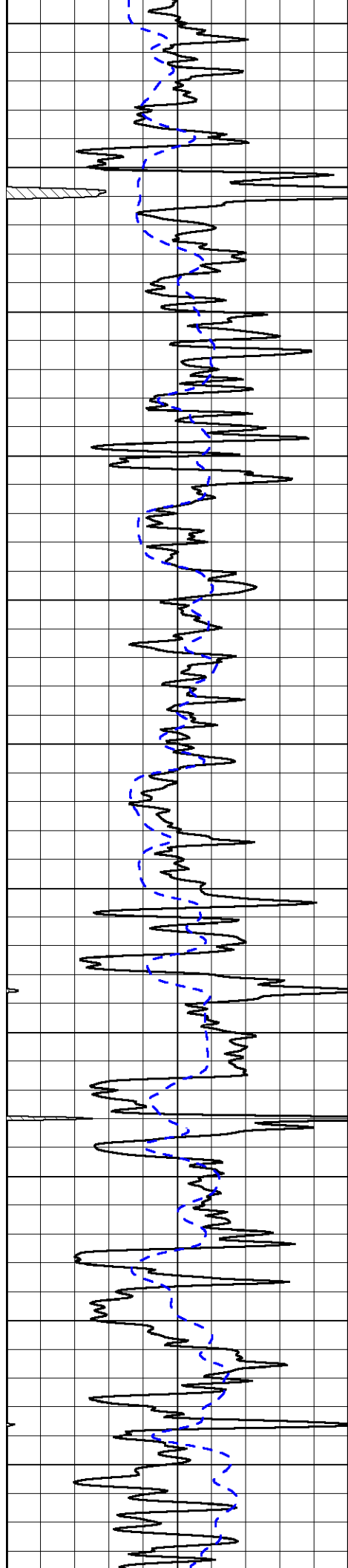
LSPD

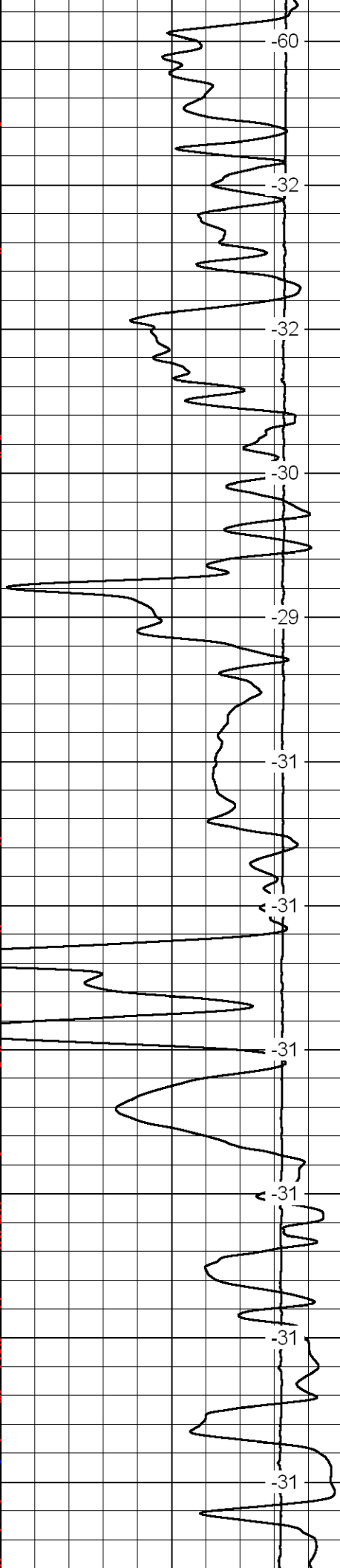
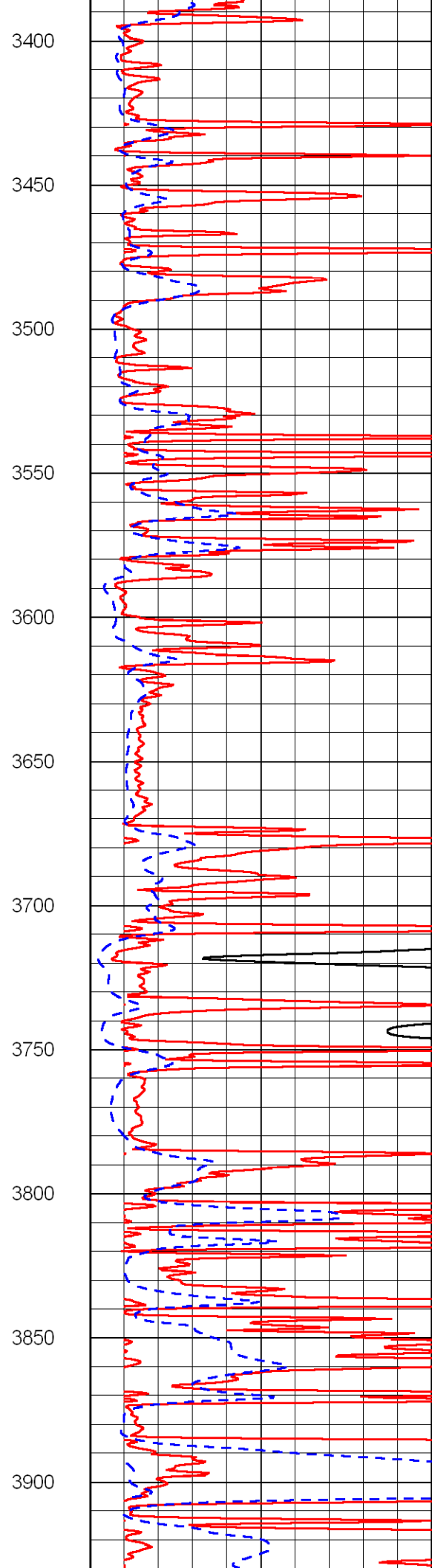
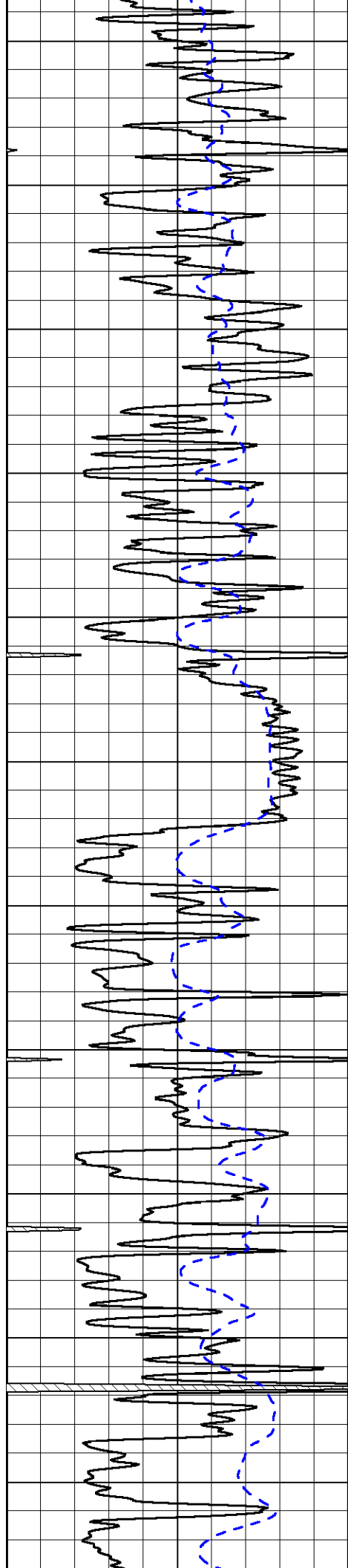


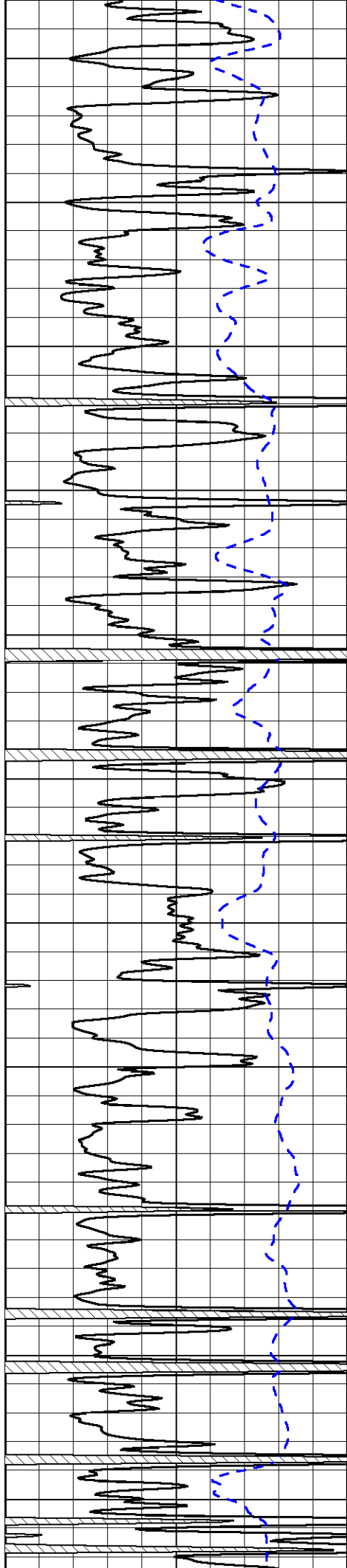












3950

4000

4050

4100

4150

4200

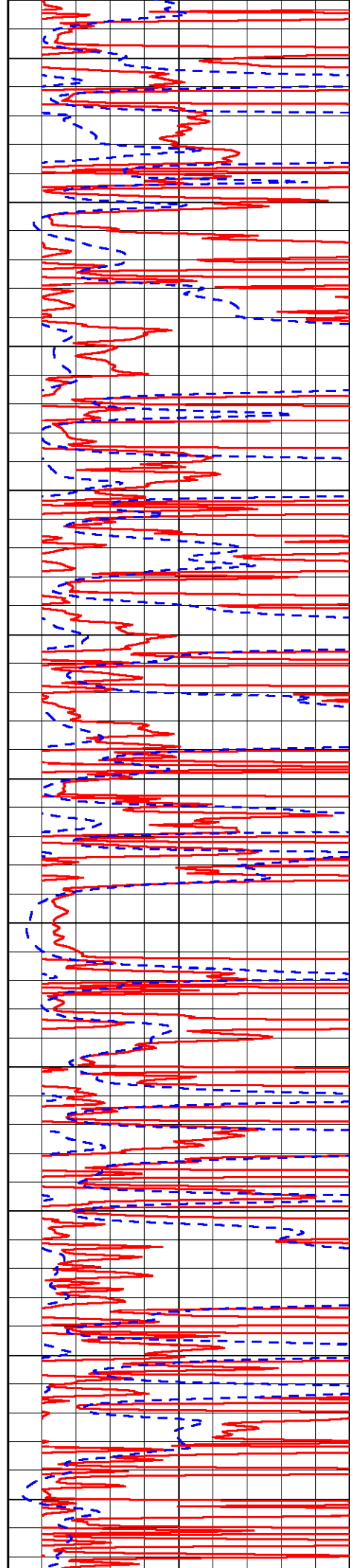
4250

4300

4350

4400

4450



-31

-31

-31

-30

-30

-30

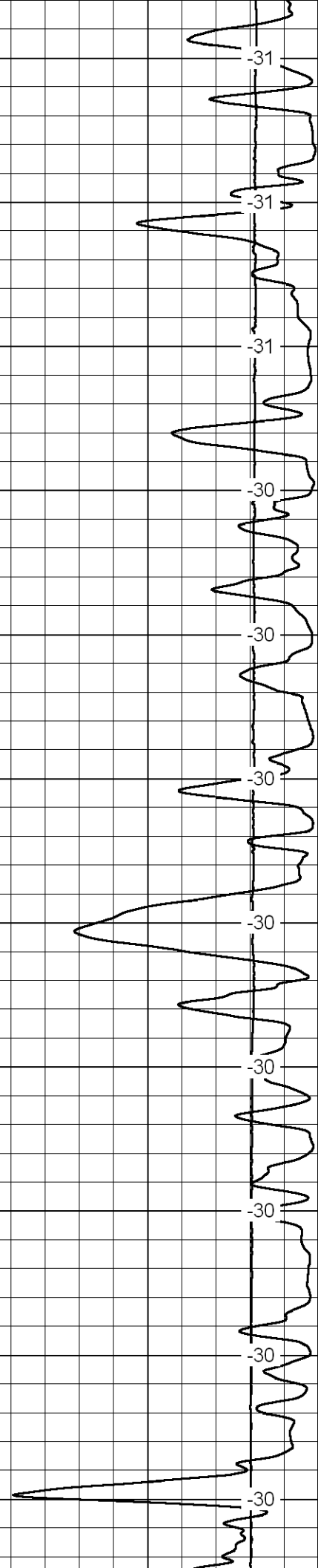
-30

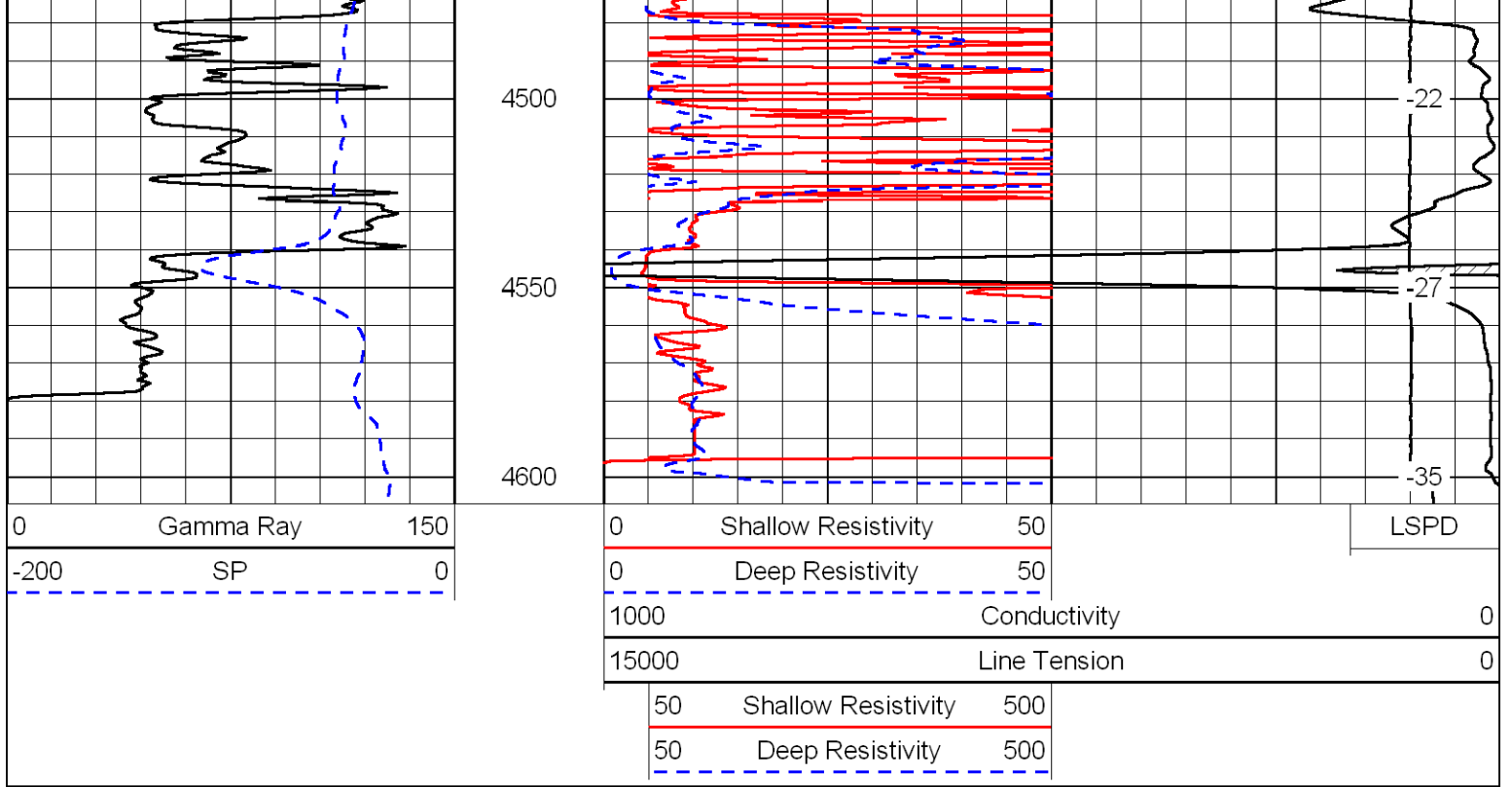
-30

-30

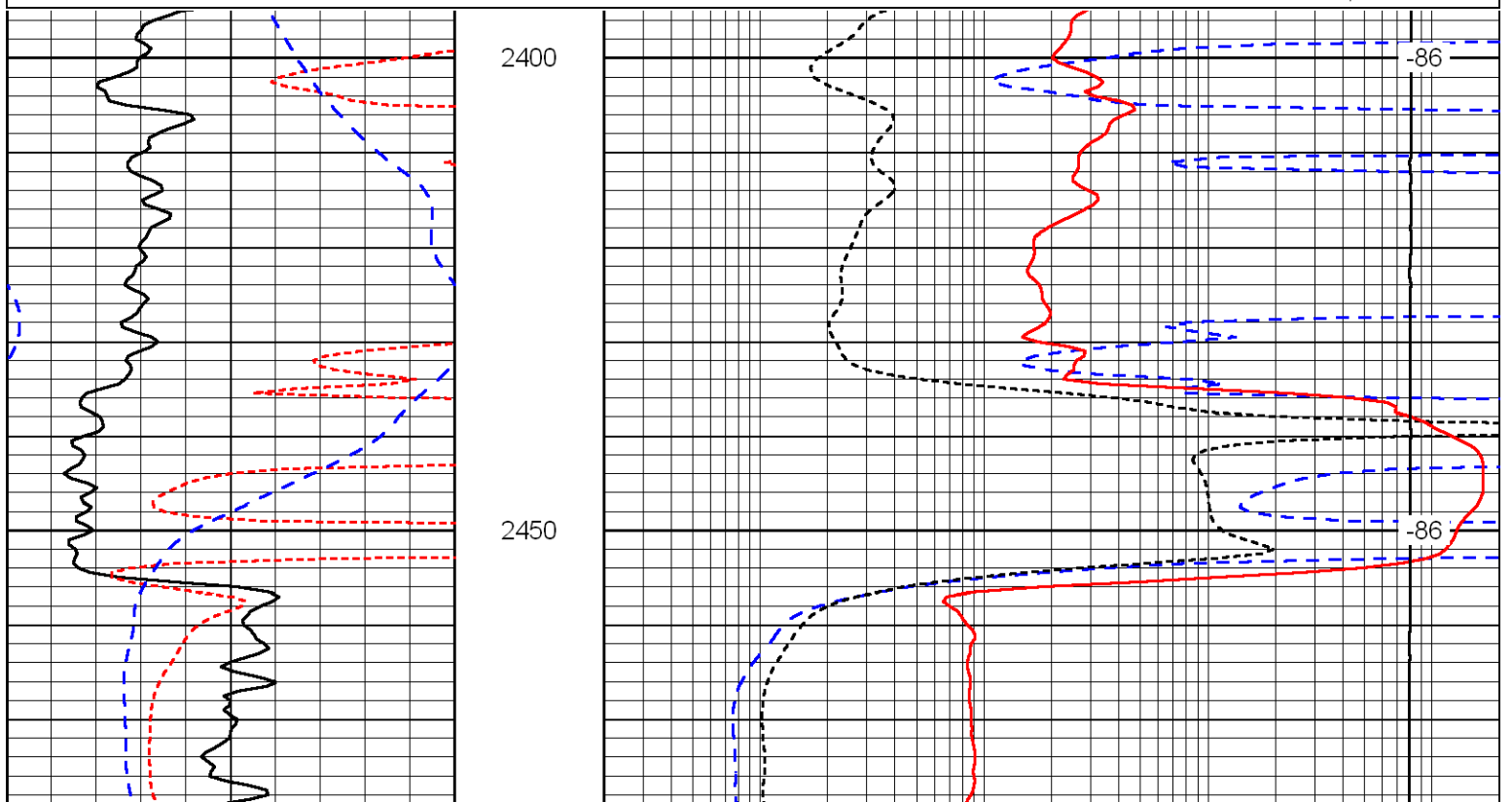
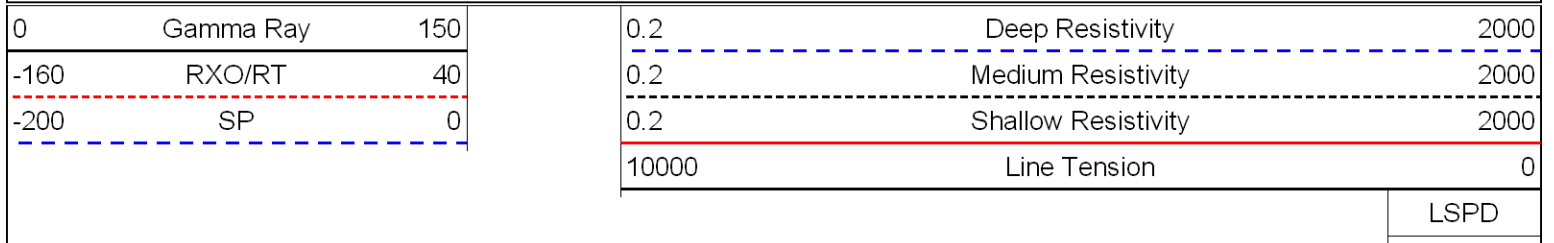
-30

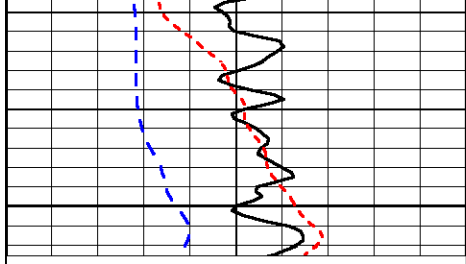
-30





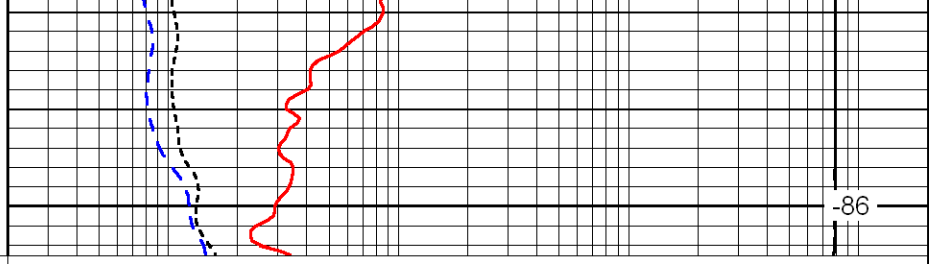
Database File: blakeexp_berkgren_b_1hd.db
 Dataset Pathname: dil/blkstk
 Presentation Format: dil
 Dataset Creation: Sat Jul 09 11:16:10 2011
 Charted by: Depth in Feet scaled 1:240





2500

0	Gamma Ray	150
-160	RXO/RT	40
-200	SP	0



-86

0.2	Deep Resistivity	2000
0.2	Medium Resistivity	2000
0.2	Shallow Resistivity	2000
10000	Line Tension	0

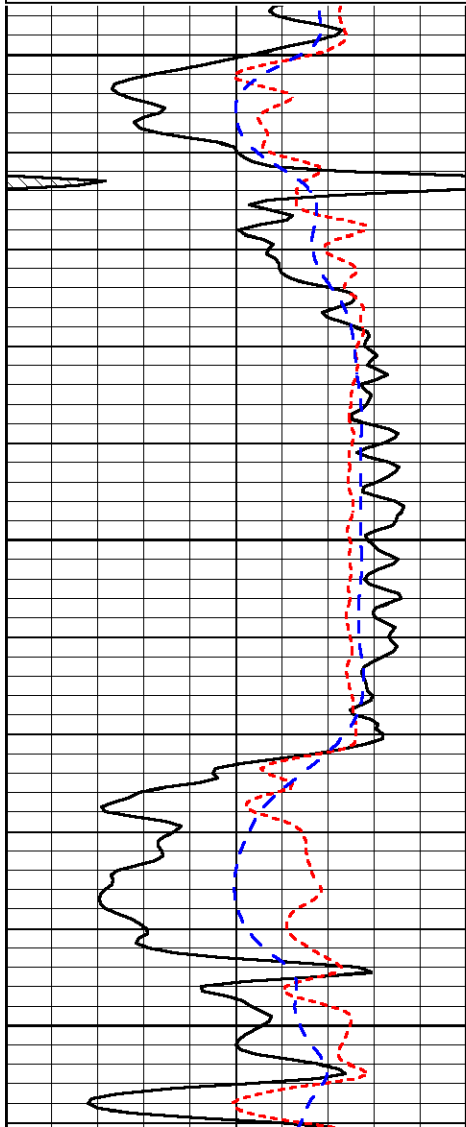
LSPD

Database File: blakeexp_berkgren_b_1hd.db
 Dataset Pathname: dil/blkstk
 Presentation Format: dil
 Dataset Creation: Sat Jul 09 11:16:10 2011
 Charted by: Depth in Feet scaled 1:240

0	Gamma Ray	150
-160	RXO/RT	40
-200	SP	0

0.2	Deep Resistivity	2000
0.2	Medium Resistivity	2000
0.2	Shallow Resistivity	2000
10000	Line Tension	0

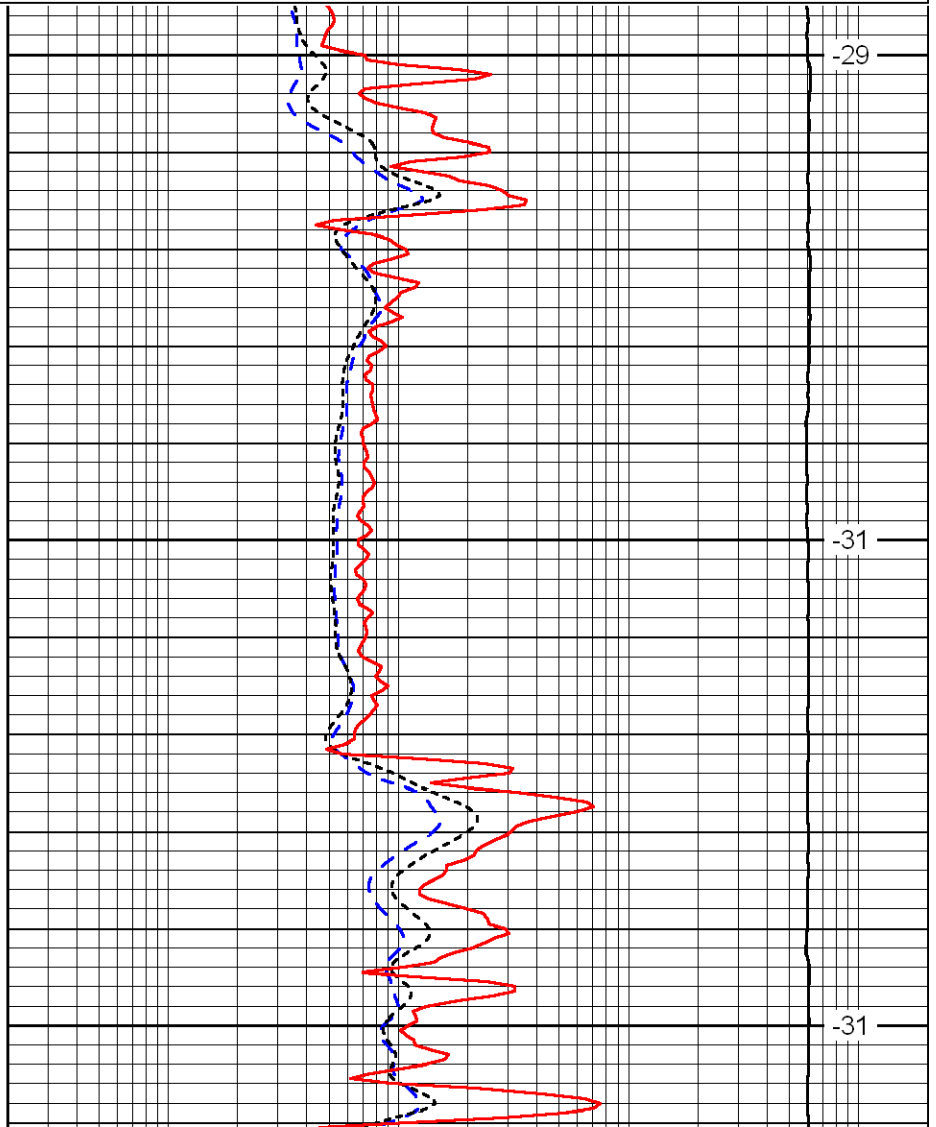
LSPD



3600

3650

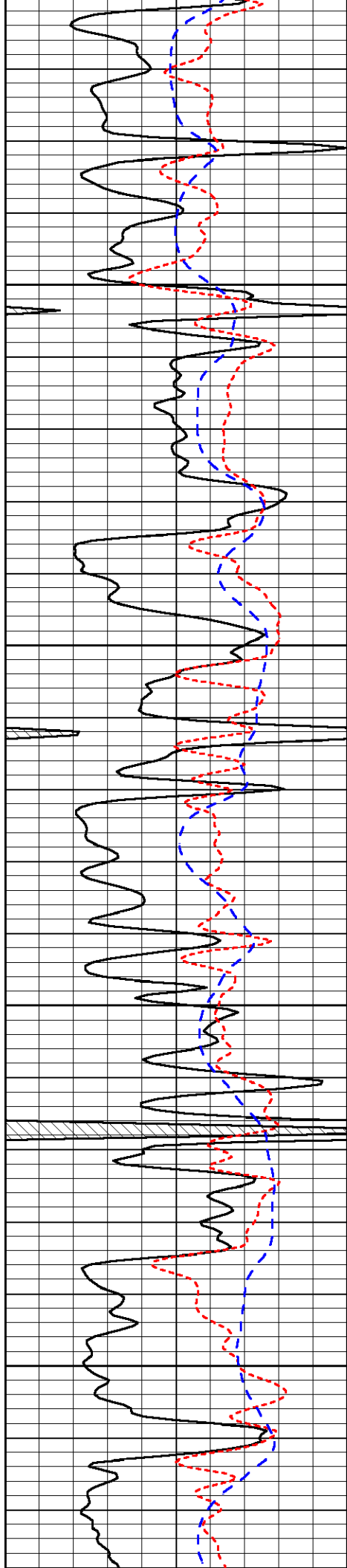
3700



-29

-31

-31

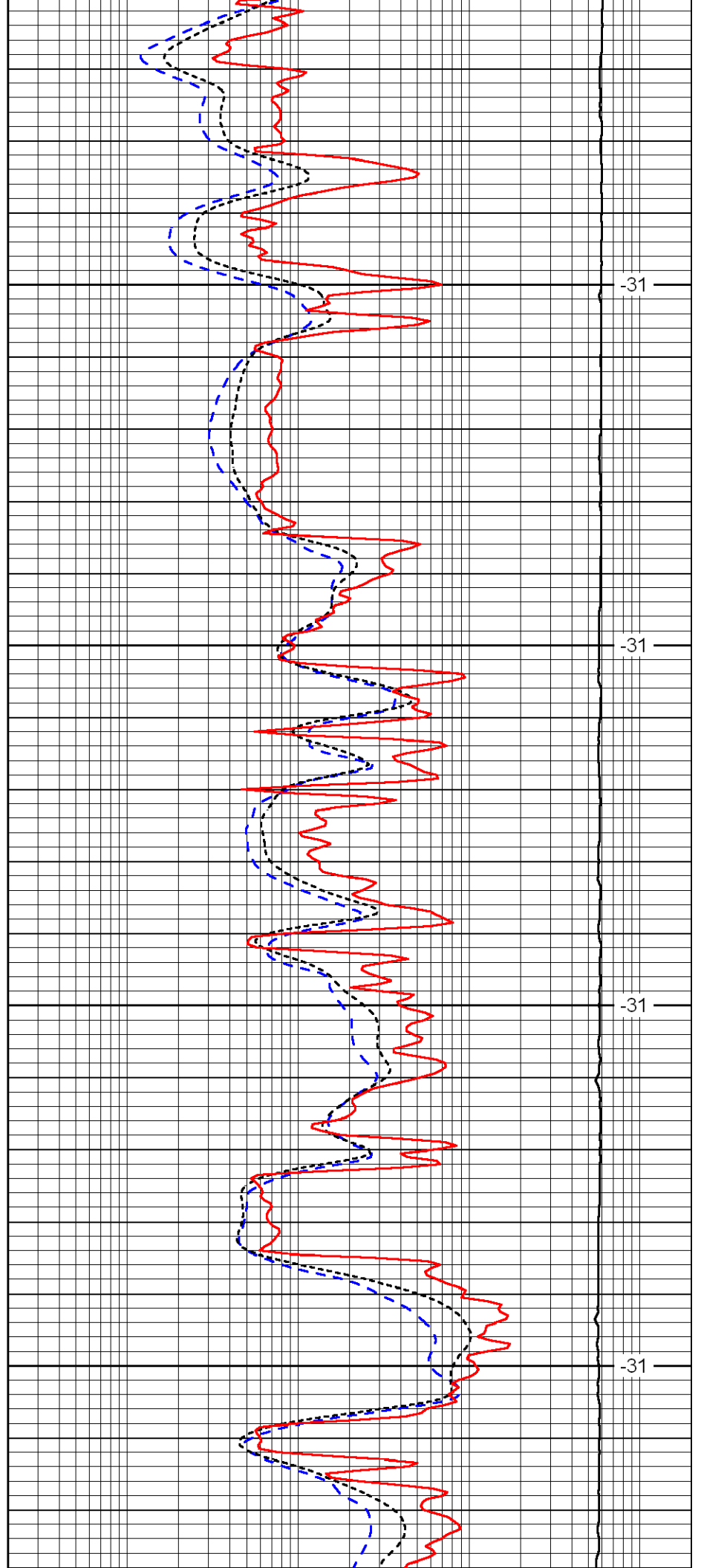


3750

3800

3850

3900

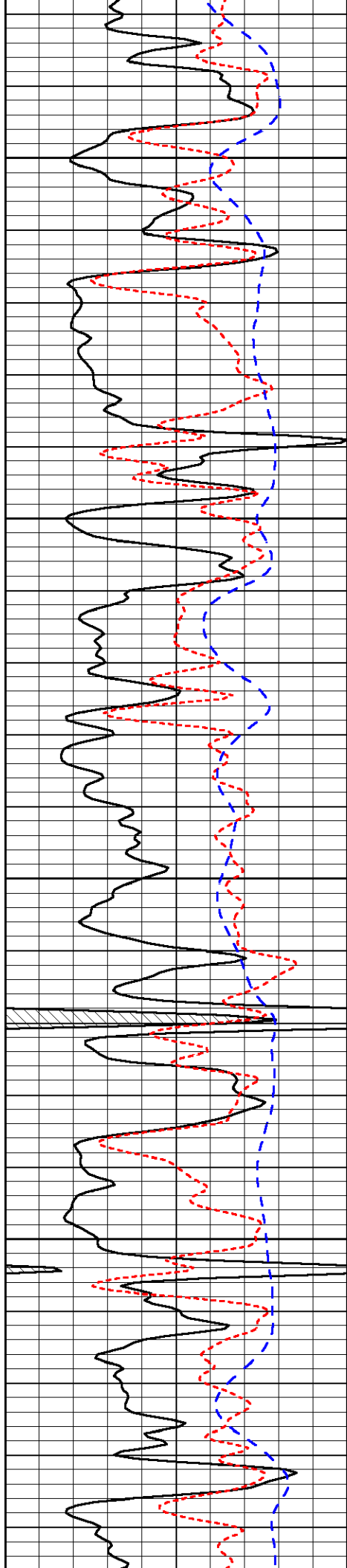


-31

-31

-31

-31

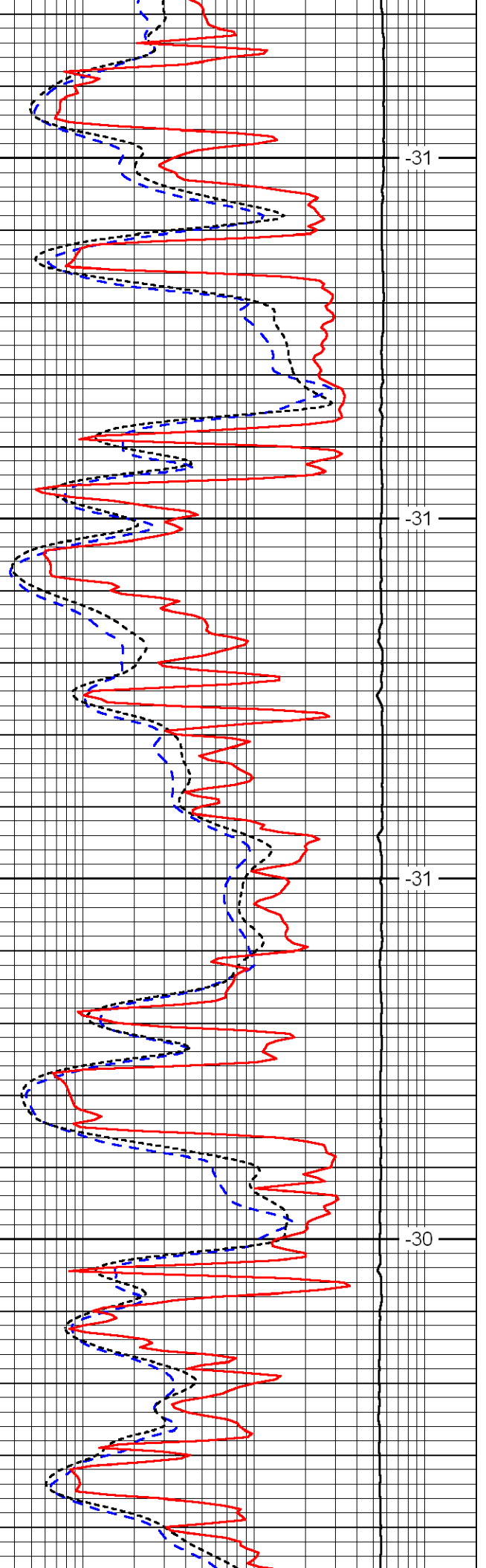


3950

4000

4050

4100

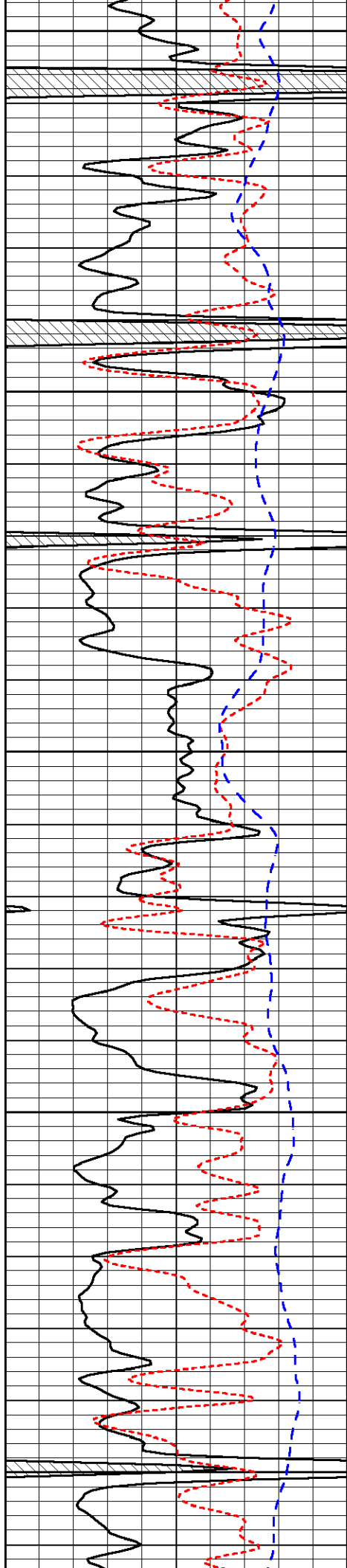


-31

-31

-31

-30



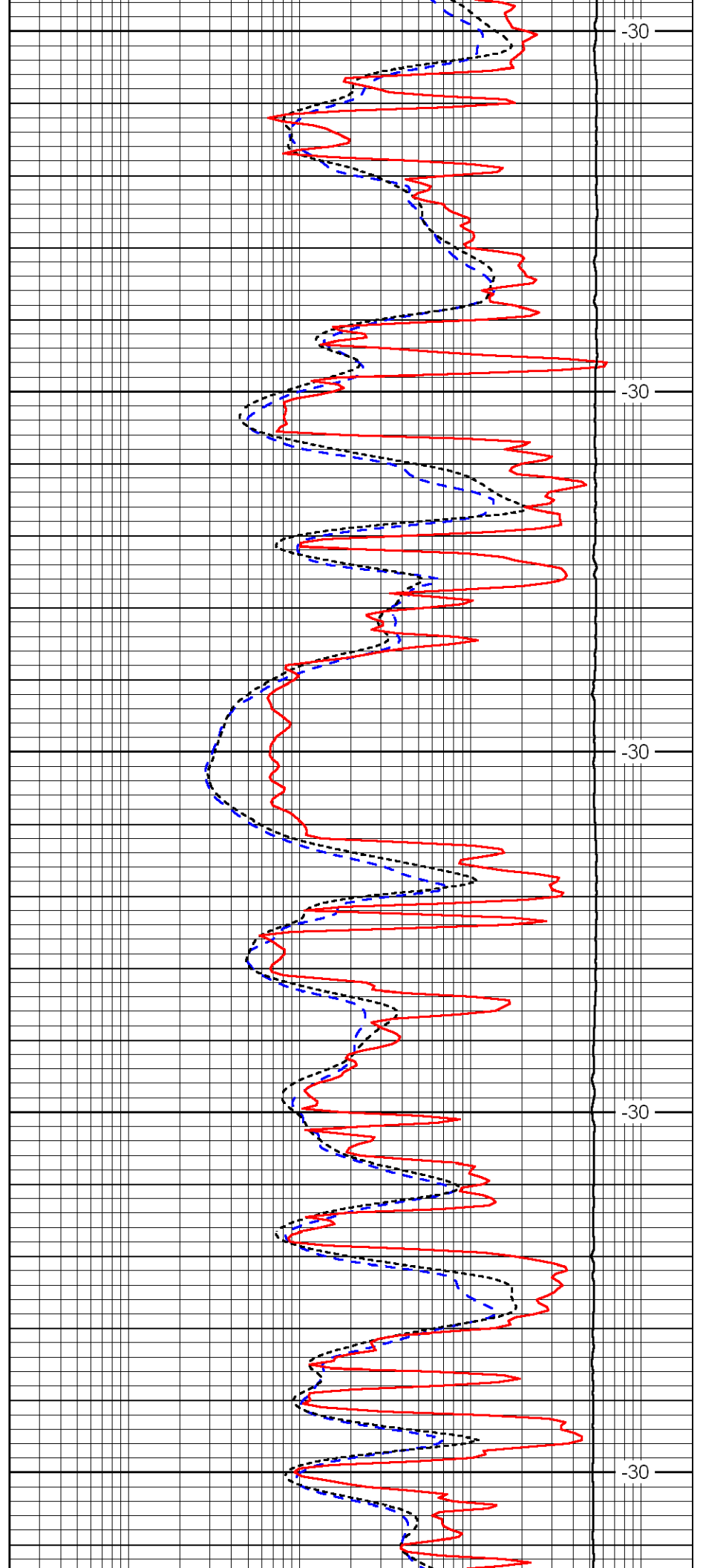
4150

4200

4250

4300

4350



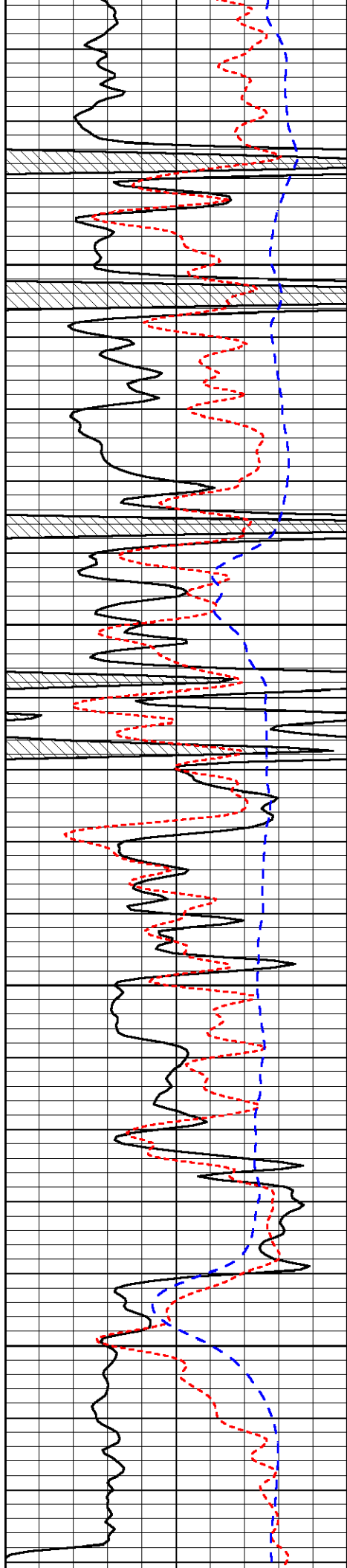
-30

-30

-30

-30

-30

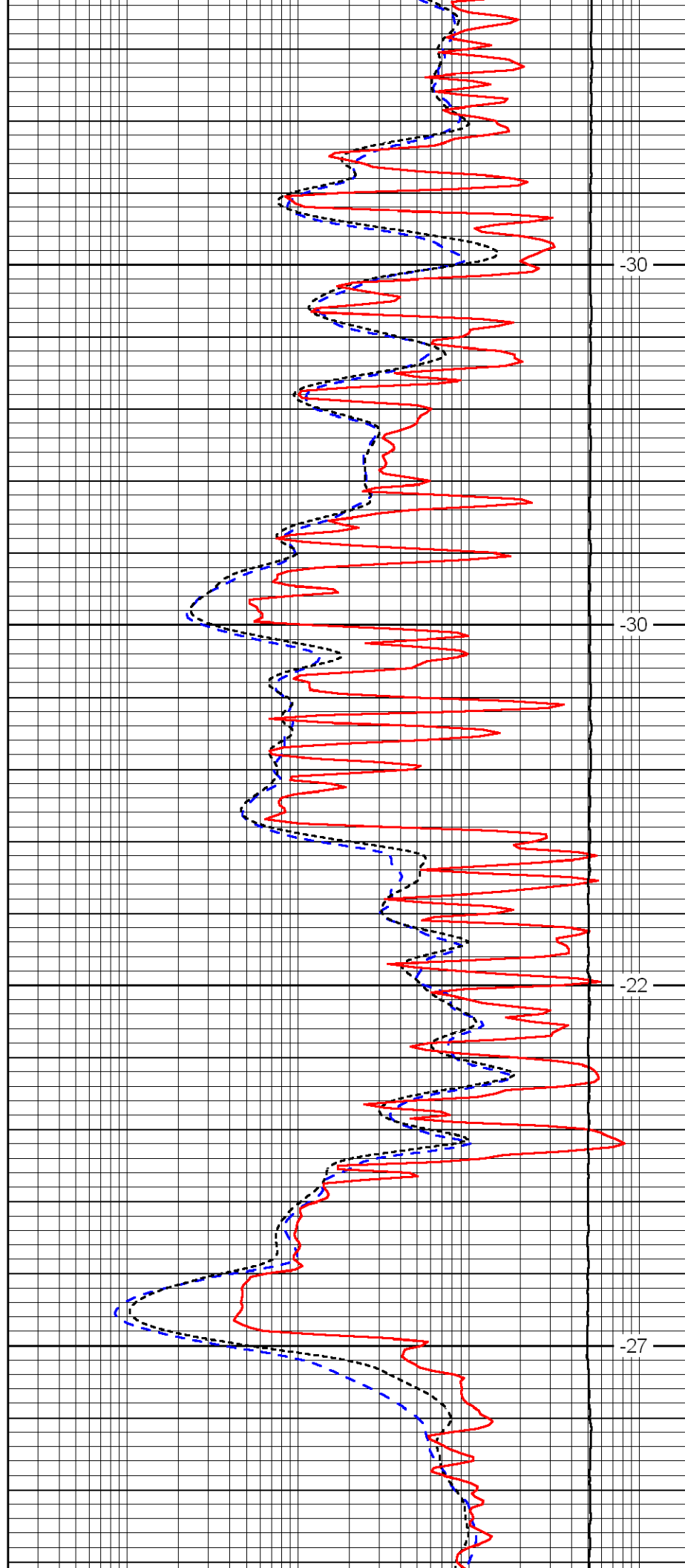


4400

4450

4500

4550

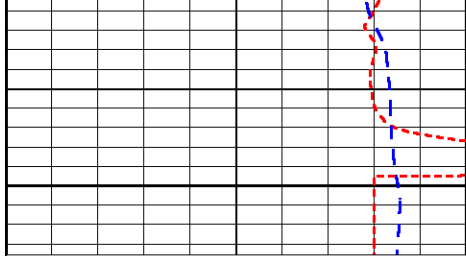


-30

-30

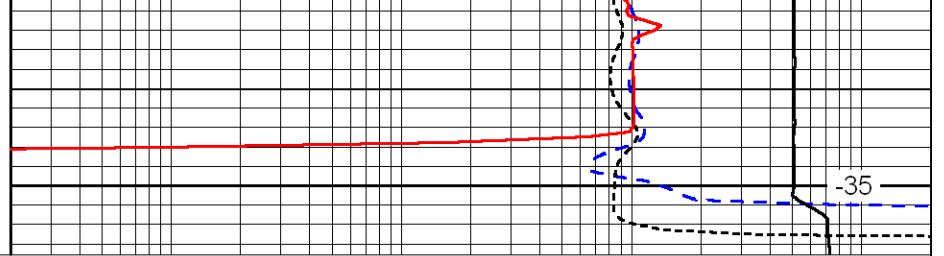
-22

-27



4600

0	Gamma Ray	150
-160	RXO/RT	40
-200	SP	0



0.2	Deep Resistivity	2000
0.2	Medium Resistivity	2000
0.2	Shallow Resistivity	2000
10000	Line Tension	0

LSPD