



Microresistivity Log

DIGITAL LOG (785) 625-3858

API No. 15-109-20,987-00-00	Company Blake Exploration, LLC.	Location 335' FSL & 335' FWL	Other Services CNL/CDL DIL
	Well Berkgren No. 1		
	Field Elkader		
	County Logan	State Kansas	
	Sec: 5	Twp: 14 S	Rge: 32 W
Permanent Datum Log Measured From Drilling Measured From	Ground Level Kelly Bushing Kelly Bushing	Elevation 2863 11 Ft. Above Perm. Datum	K.B. 2874 D.F. G.L. 2863

Date	4/5/2011
Run Number	One
Depth Driller	4250
Depth Logger	4250
Bottom Logged Interval	4249
Top Log Interval	3400
Casing Driller	8.625 @ 226
Casing Logger	222
Bit Size	7.875
Type Fluid in Hole	Chemical
Salinity, ppm CL	4000
Density / Viscosity	9.4 53
pH / Fluid Loss	11.5 7.2
Source of Sample	Flowline
Rm @ Meas. Temp	.85 @ 65
Rmf @ Meas. Temp	.64 @ 65
Rmc @ Meas. Temp	1.15 @ 65
Source of Rmf / Rmc	Charts
Rm @ BHT	.46 @ 121
Operating Rig Time	4 Hours
Max Rec. Temp. F	121
Equipment Number	4
Location	Hays
Recorded By	K Bange
Witnessed By	Mike Davignon

<<< Fold Here >>>

All interpretations are opinions based on inferences from electrical or other measurements and we cannot and do not guarantee the accuracy or correctness of any interpretation, and we shall not, except in the case of gross or willful negligence on our part, be liable or responsible for any loss, costs, damages, or expenses incurred or sustained by anyone resulting from any interpretation made by any of our officers, agents or employees. These interpretations are also subject to our general terms and conditions set out in our current Price Schedule.

Comments

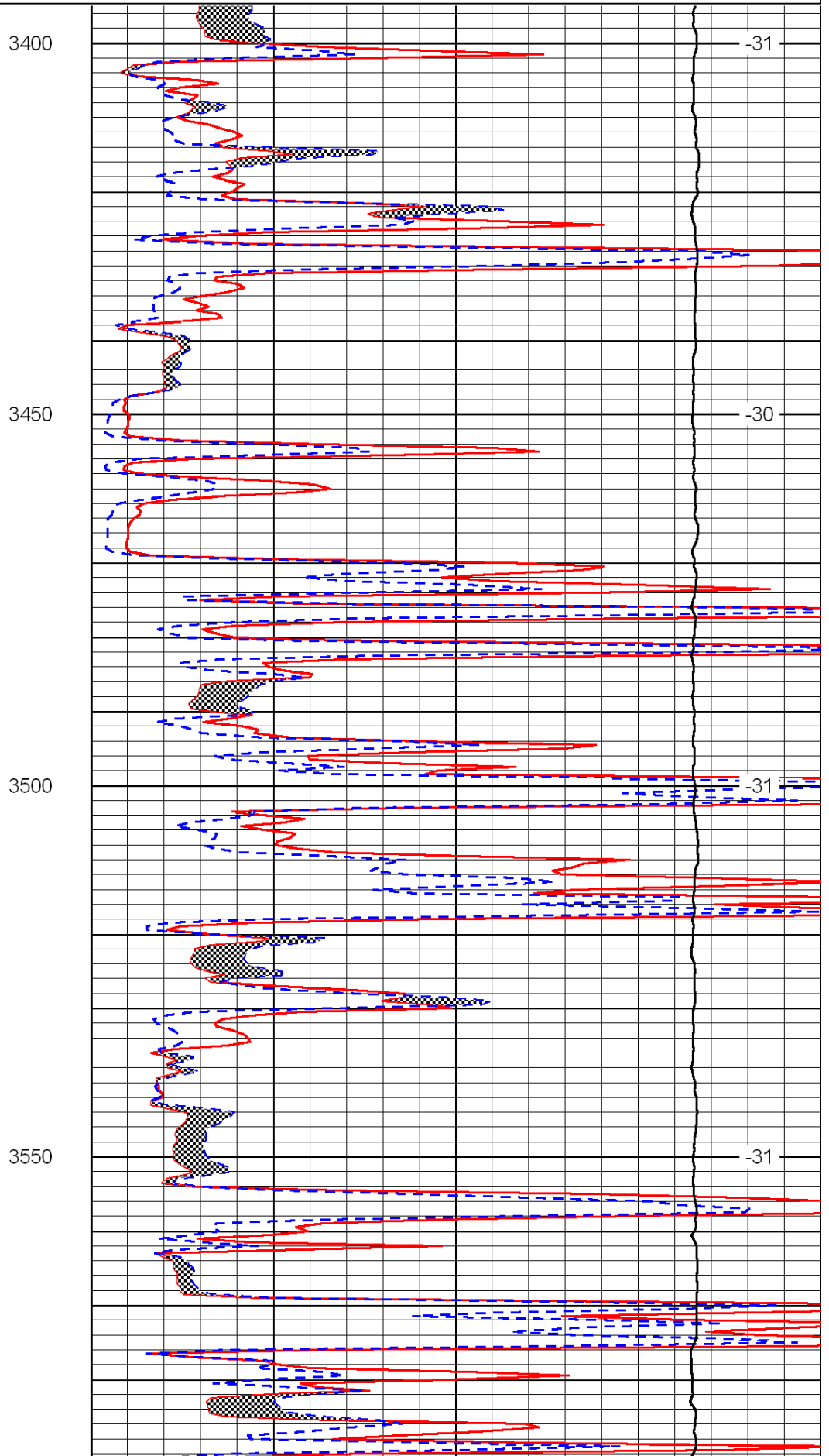
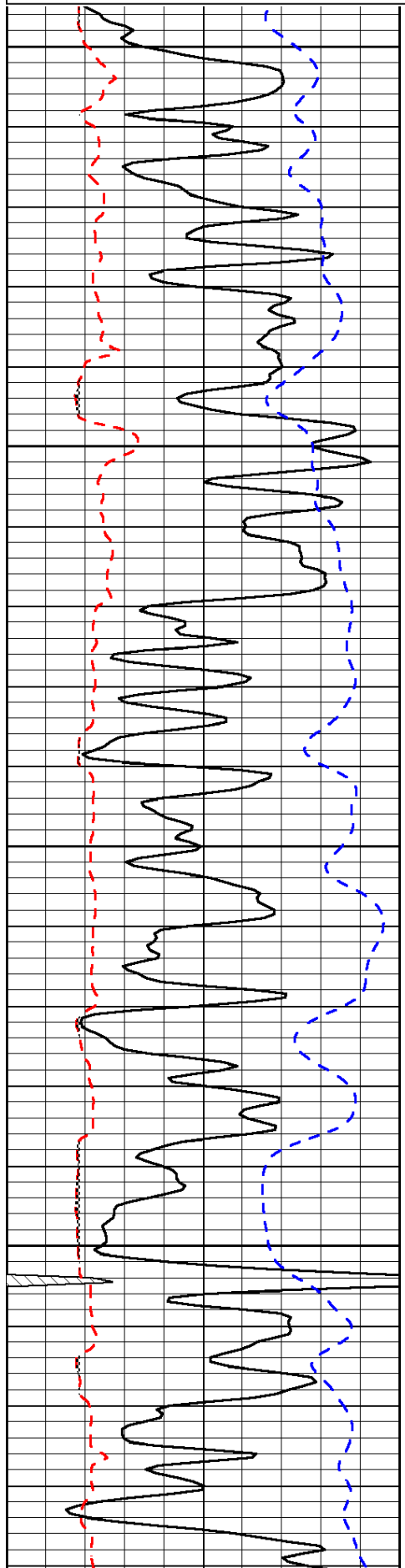
Thank you for using Log-Tech, Inc.
(785) 625-3858

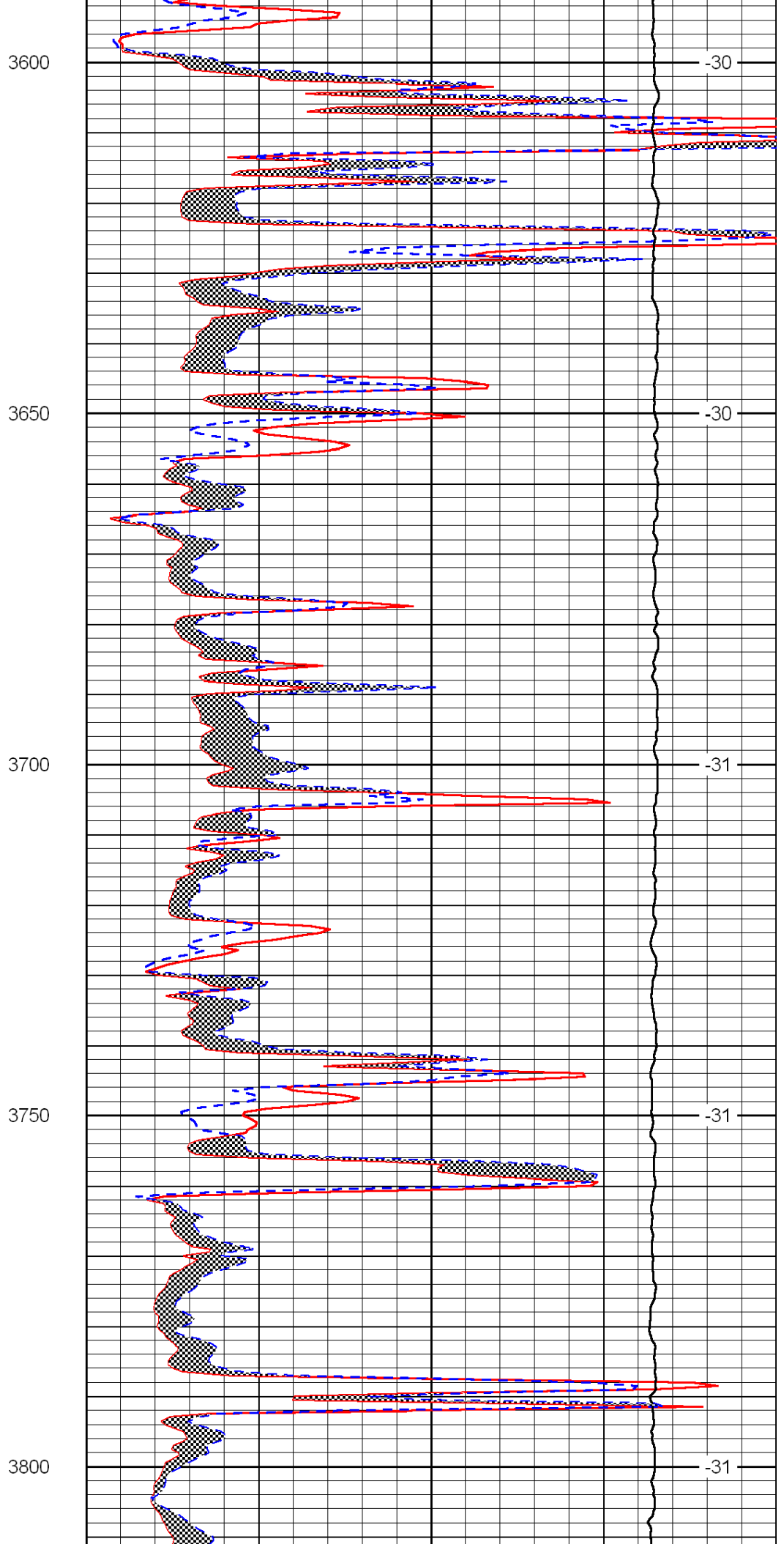
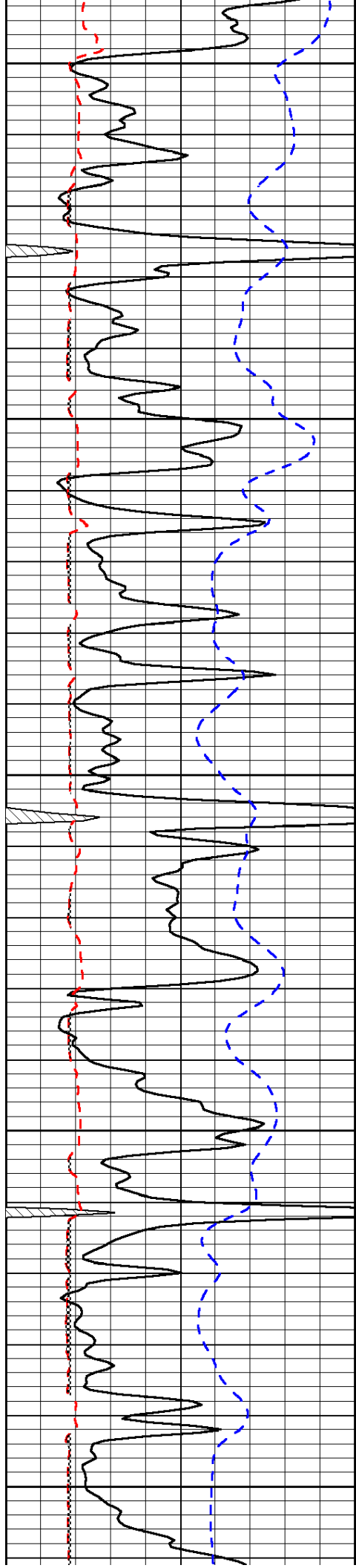
Oakley KS, 16 South to Mustang RD
3 West to 410 RD, 1 South, East Into

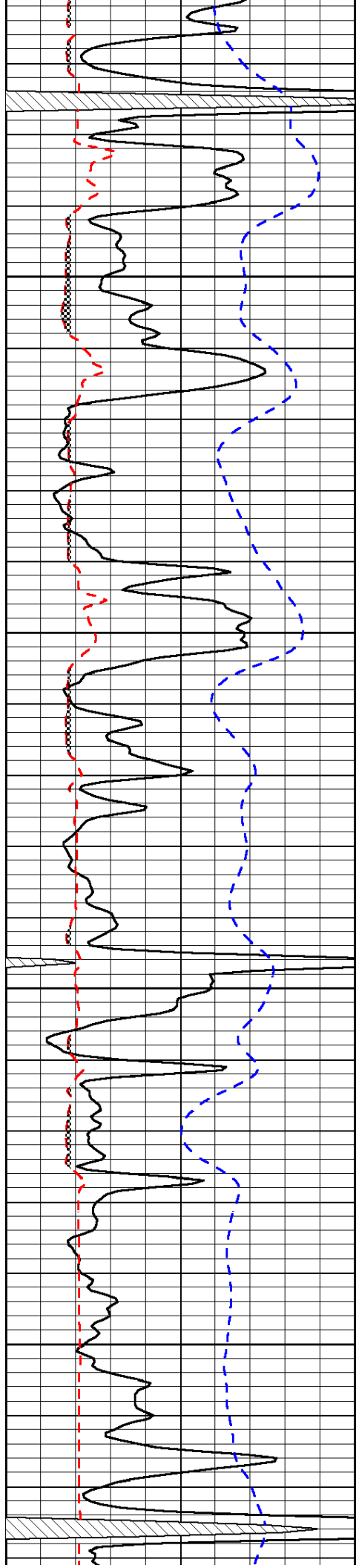
0	Gamma Ray	150
6	Micro Log Caliper (GAPI)	16
-200	SP (mV)	0

0	Micro Inverse 1 X 1	40
0	Micro Normal 2"	40
15000	Line Weight	0

LSPD





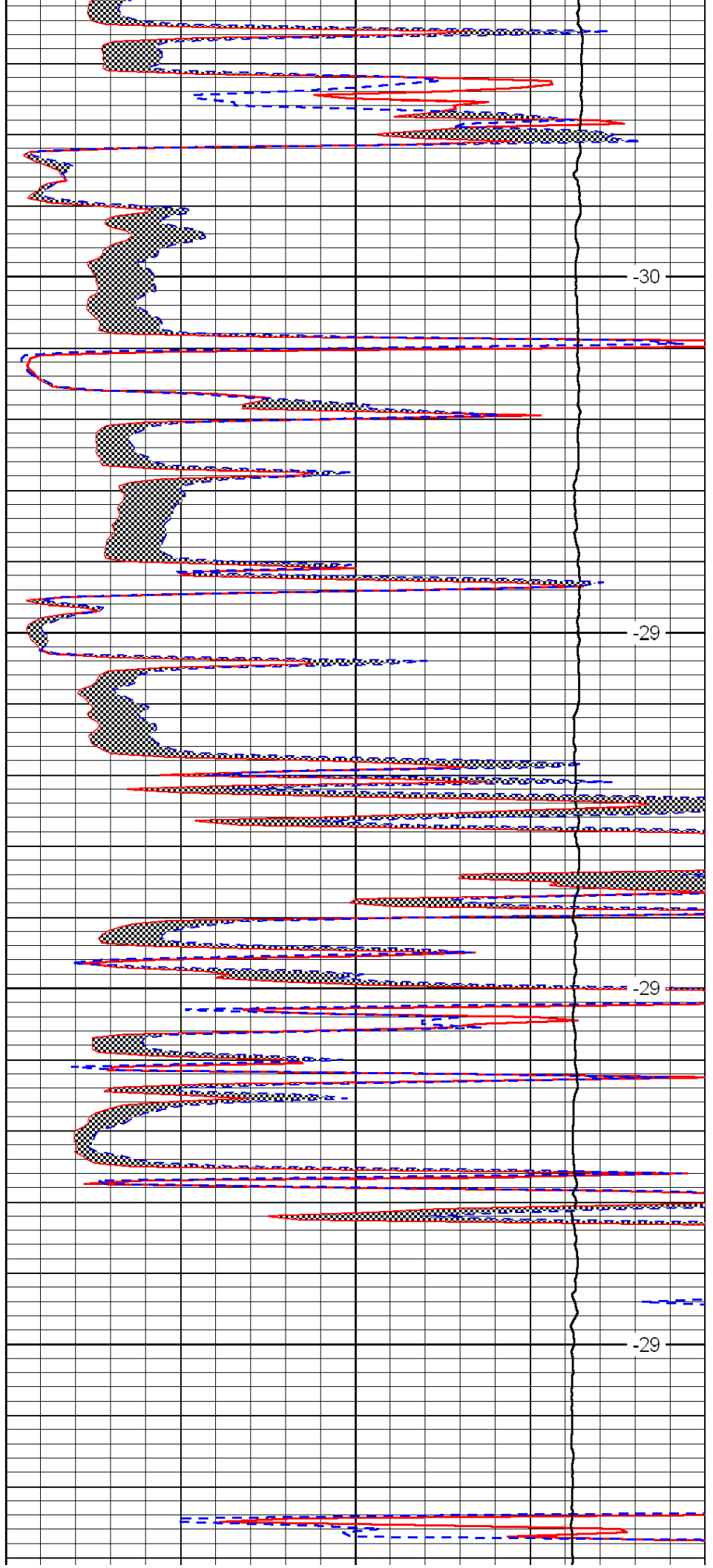


3850

3900

3950

4000

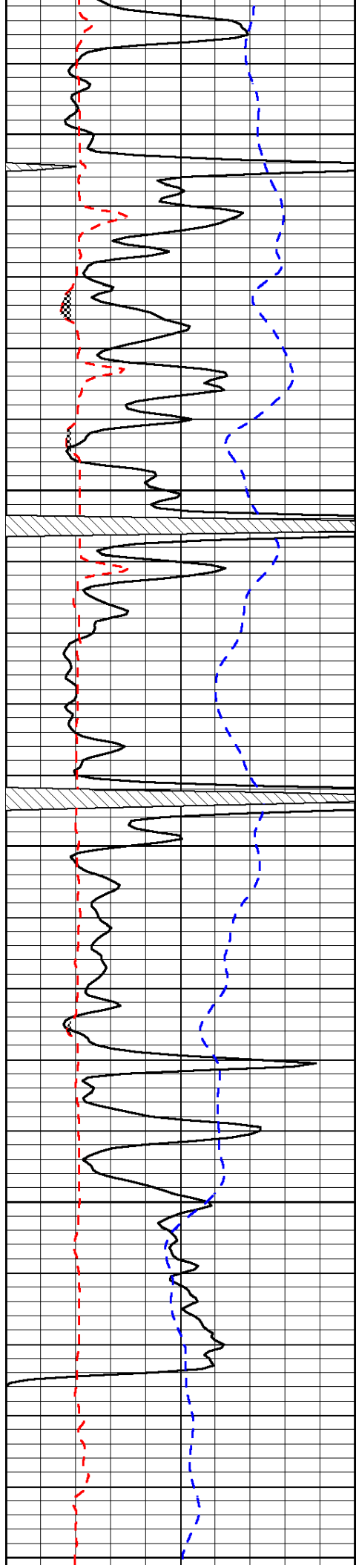


-30

-29

-29

-29



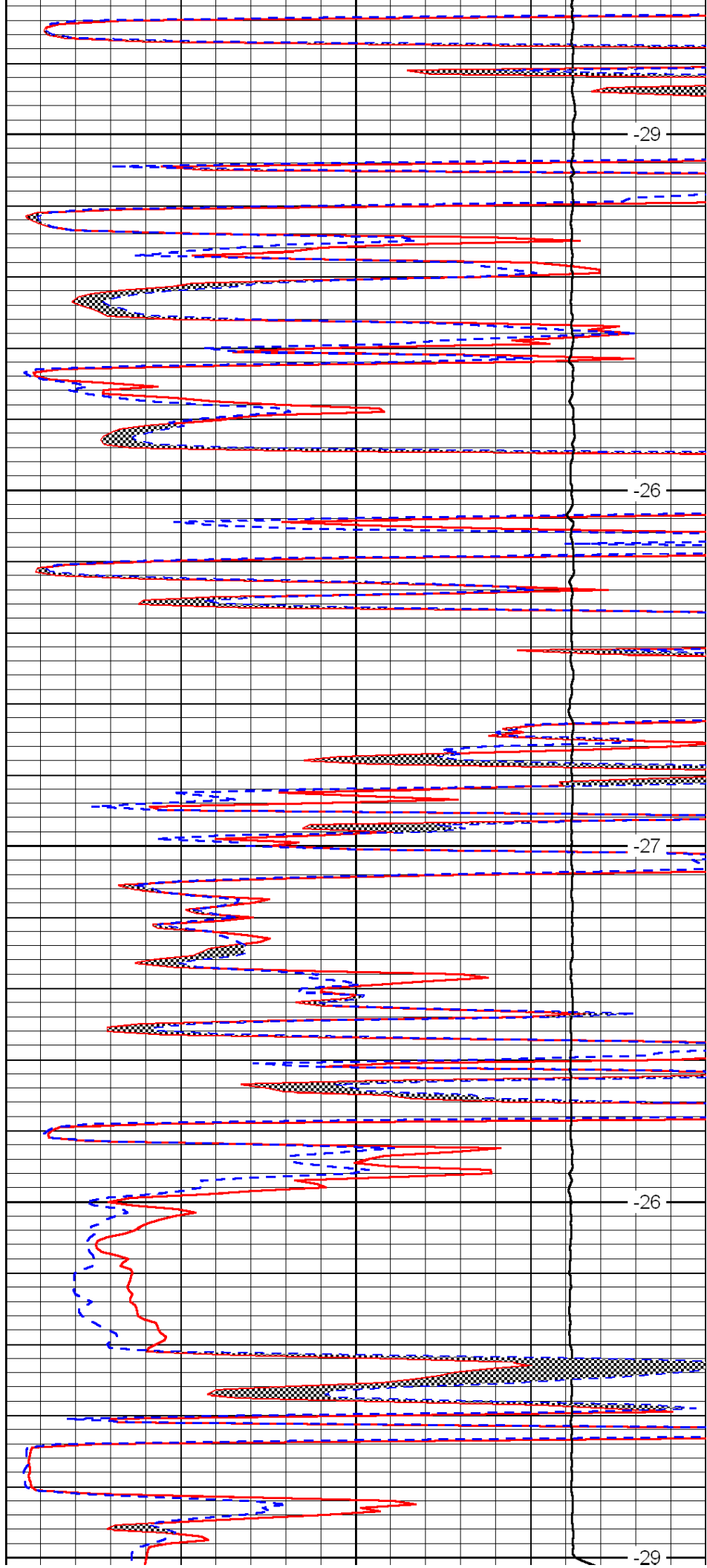
4050

4100

4150

4200

4250



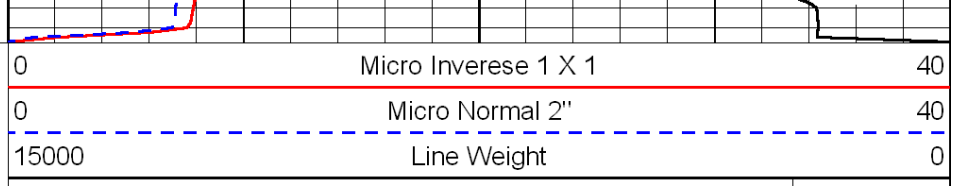
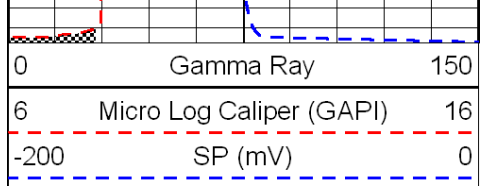
-29

-26

-27

-26

-29



LSPD