



DIGITAL LOG (785) 625-3858

Dual Induction Log

API No. 15-109-20,987-00-00

Company Blake Exploration, LLC.  
 Well Berggren No. 1  
 Field Elkader  
 County Logan State Kansas

Location 335' FSL & 335' FWL

Sec: 5 Twp: 14 S Rge: 32 W

Other Services  
 CNL/CDL  
 MEL

Permanent Datum	Ground Level	Elevation 2863	K.B. 2874
Log Measured From	Kelly Bushing	11 Ft. Above Perm. Datum	D.F. 2863
Drilling Measured From	Kelly Bushing		G.L. 2863
Date	4/5/2011		
Run Number	One		
Depth Driller	4250		
Depth Logger	4250		
Bottom Logged Interval	4249		
Top Log Interval	200		
Casing Driller	8.625 @ 226		
Casing Logger	222		
Bit Size	7.875		
Type Fluid in Hole	Chemical		
Salinity, ppm CL	4000		
Density / Viscosity	9.4   53		
pH / Fluid Loss	11.5   7.2		
Source of Sample	Flowline		
Rm @ Meas. Temp	.85 @ 65		
Rmf @ Meas. Temp	.64 @ 65		
Rmc @ Meas. Temp	1.15 @ 65		
Source of Rmf / Rmc	Charts		
Rm @ BHT	.46 @ 121		
Operating Rig Time	4 Hours		
Max Rec. Temp. F	121		
Equipment Number	4		
Location	Hays		
Recorded By	K Bange		
Witnessed By	Mike Davignon		

<<< Fold Here >>>

All interpretations are opinions based on inferences from electrical or other measurements and we cannot and do not guarantee the accuracy or correctness of any interpretation, and we shall not, except in the case of gross or willful negligence on our part, be liable or responsible for any loss, costs, damages, or expenses incurred or sustained by anyone resulting from any interpretation made by any of our officers, agents or employees. These interpretations are also subject to our general terms and conditions set out in our current Price Schedule.

Comments

Thank you for using Log-Tech, Inc.  
 (785) 625-3858

Oakley KS, 16 South to Mustang RD  
 3 West to 410 RD, 1 South, East Into

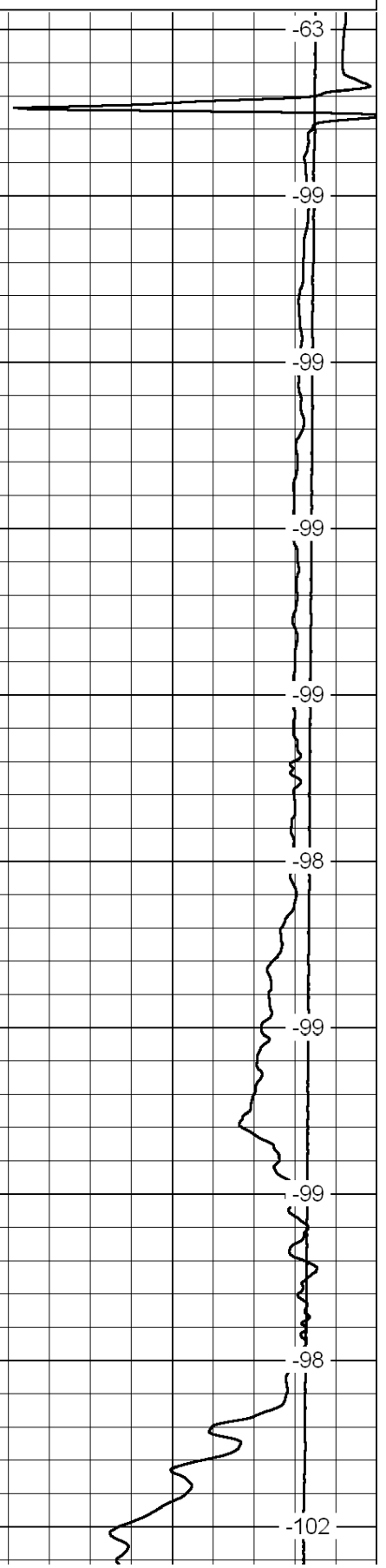
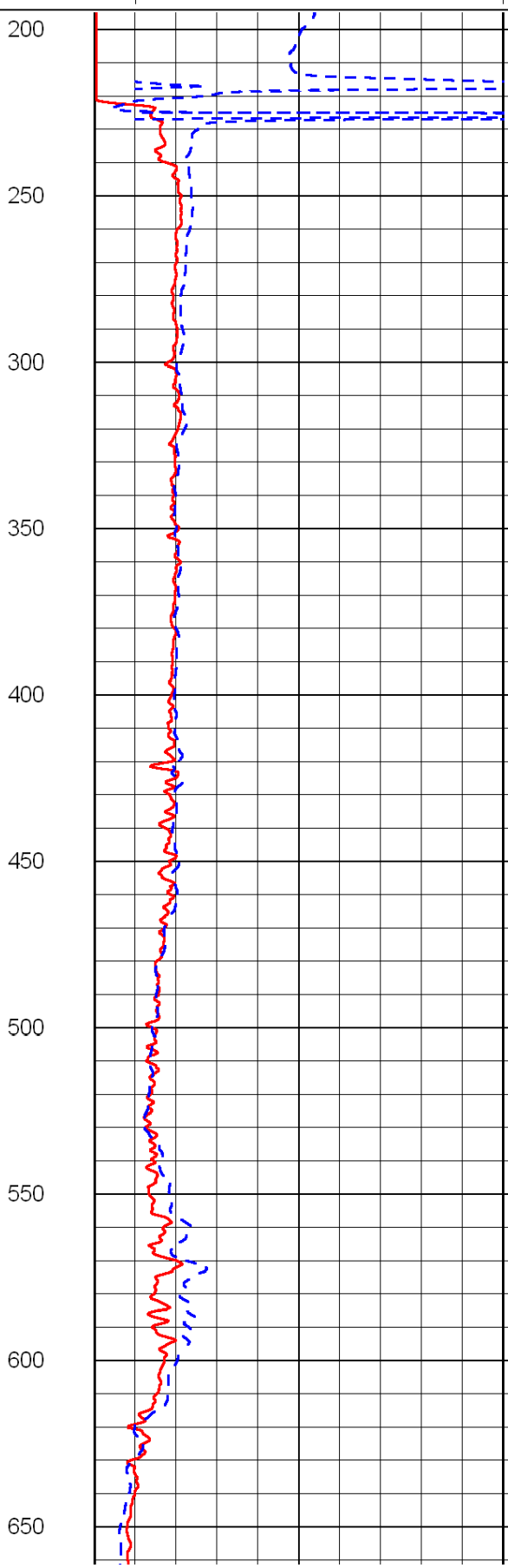
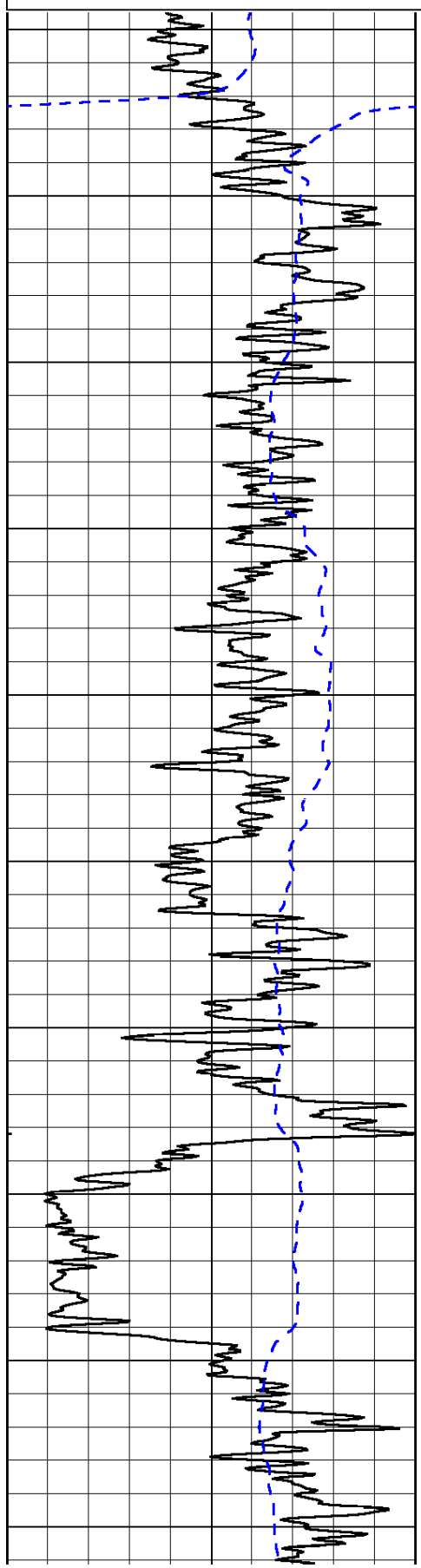
0	Gamma Ray	150
-200	SP (mV)	0

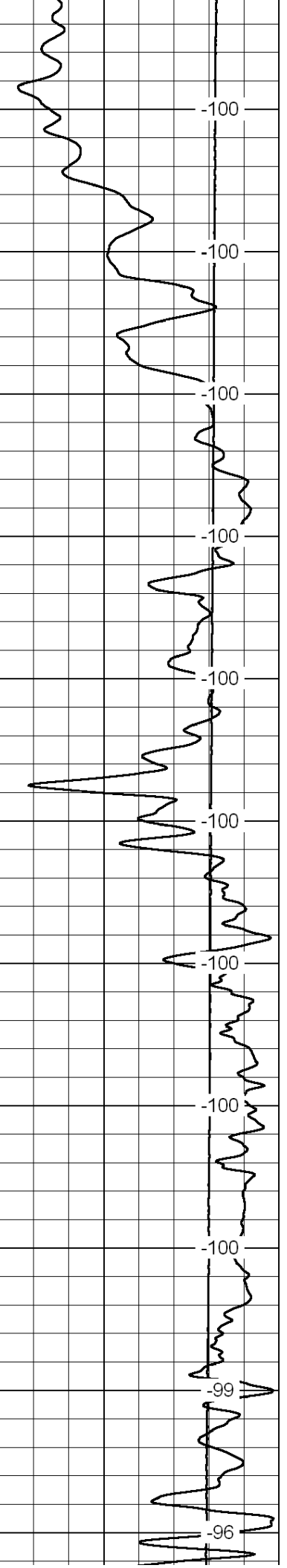
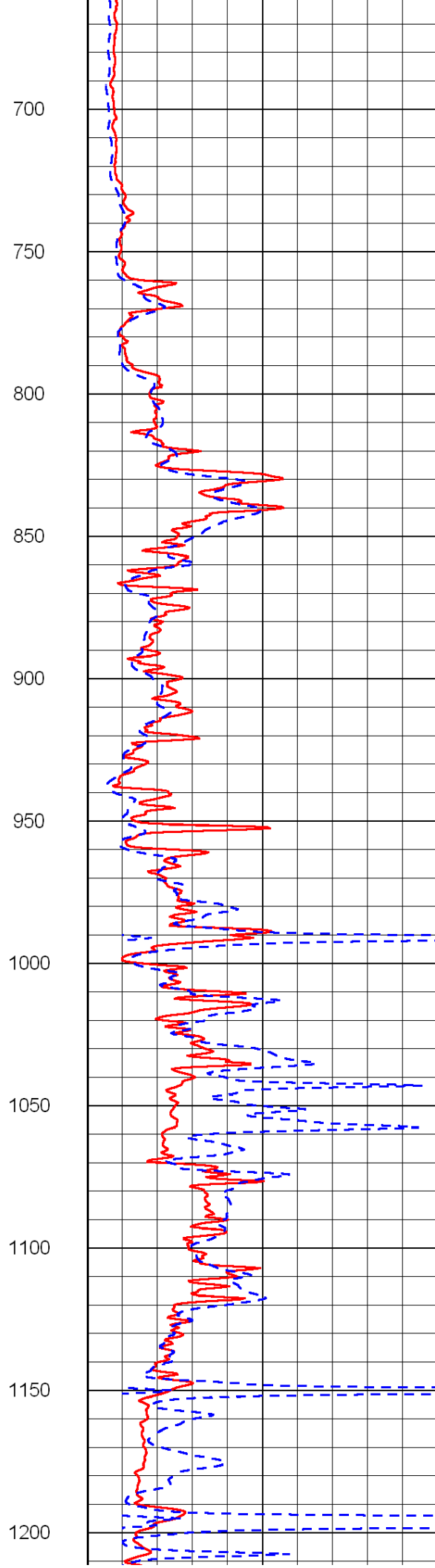
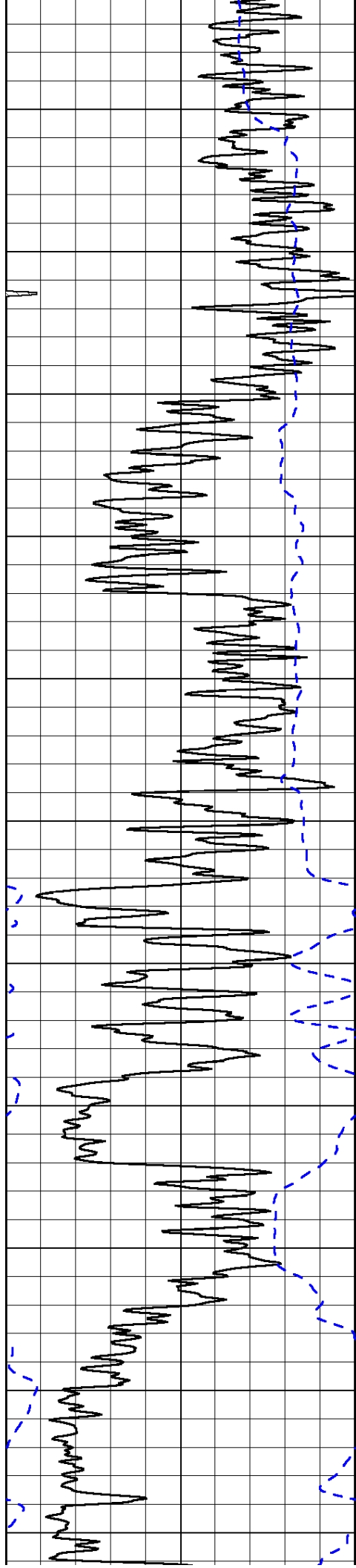
0	Shallow Resistivity	50
0	Deep Resistivity	50

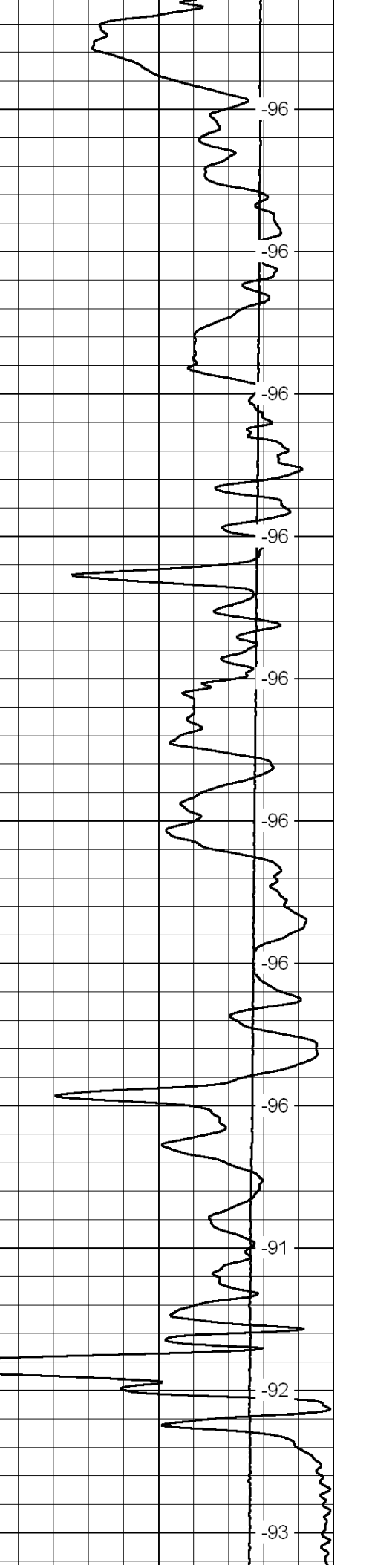
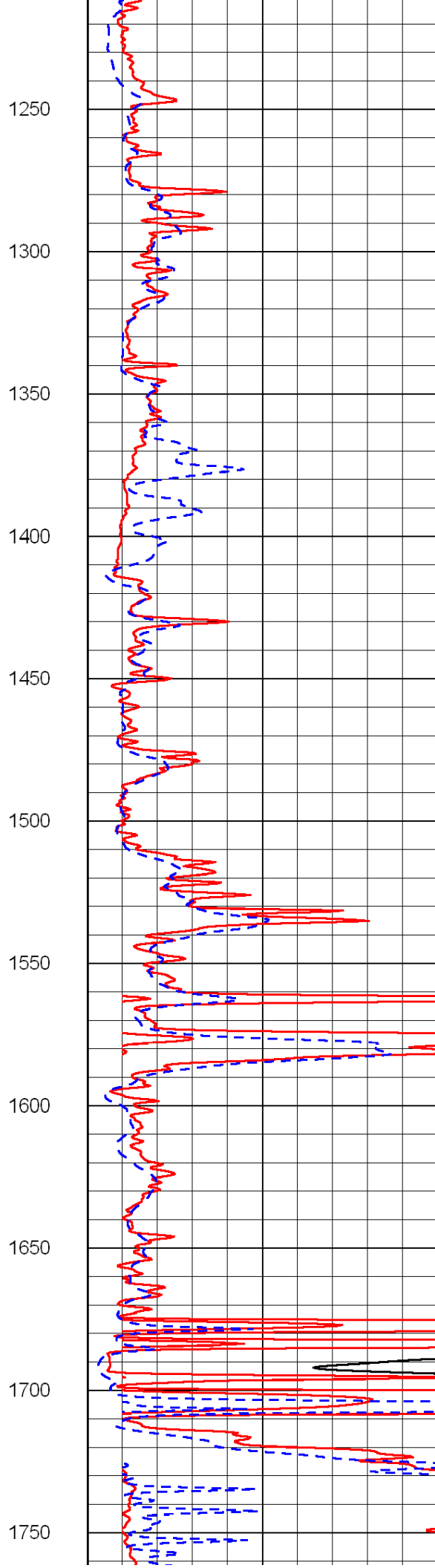
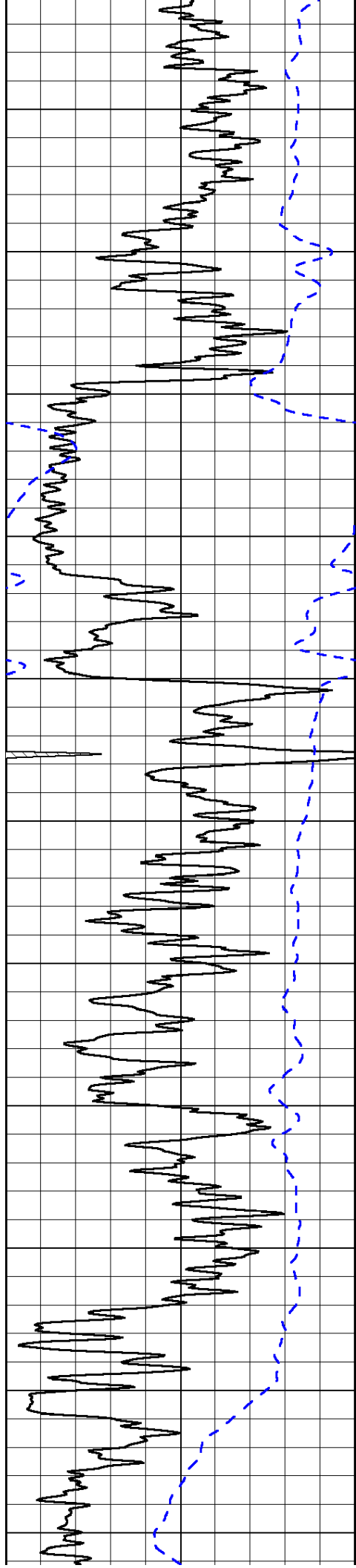
LSPD

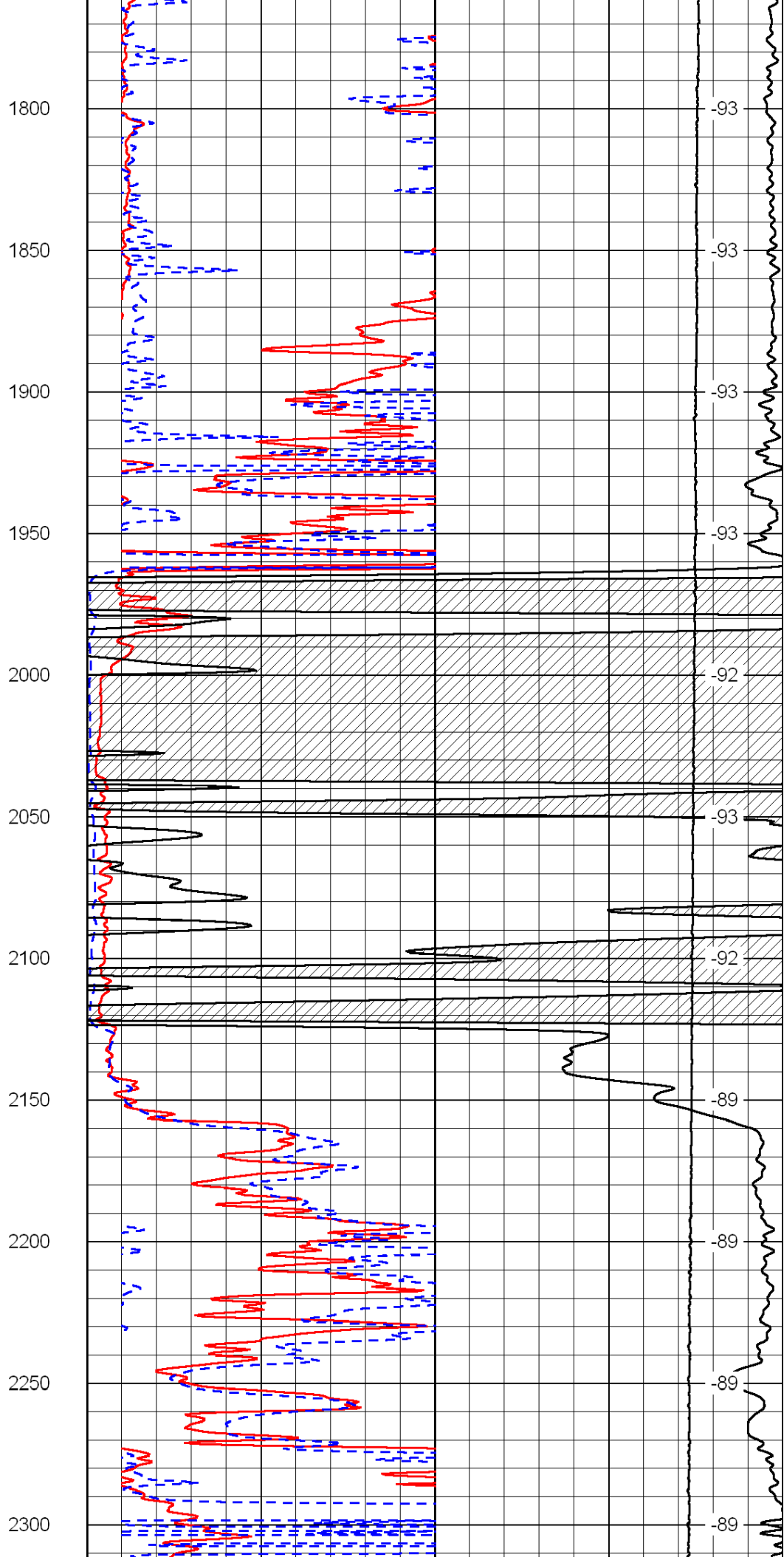
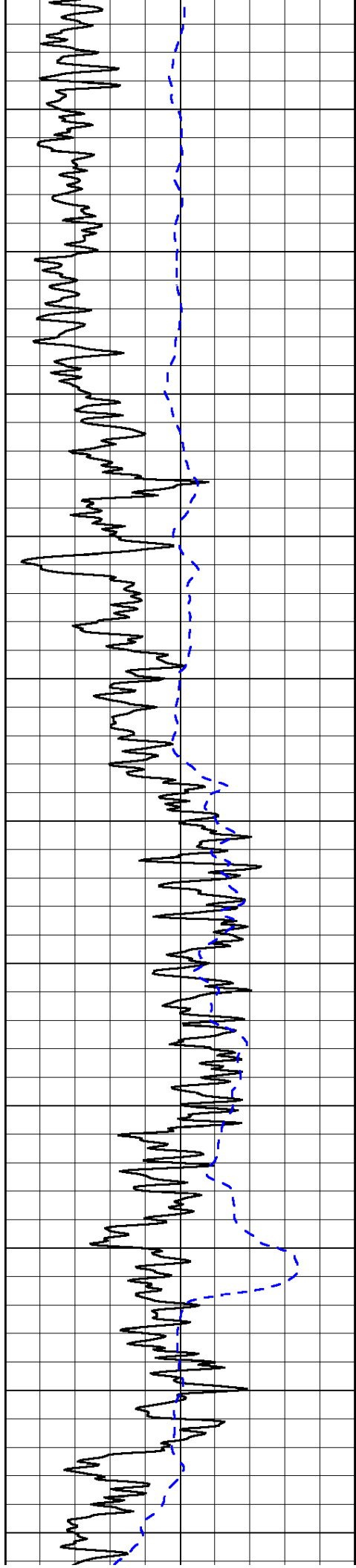
1000	Conductivity	0
15000	Line Tension	0

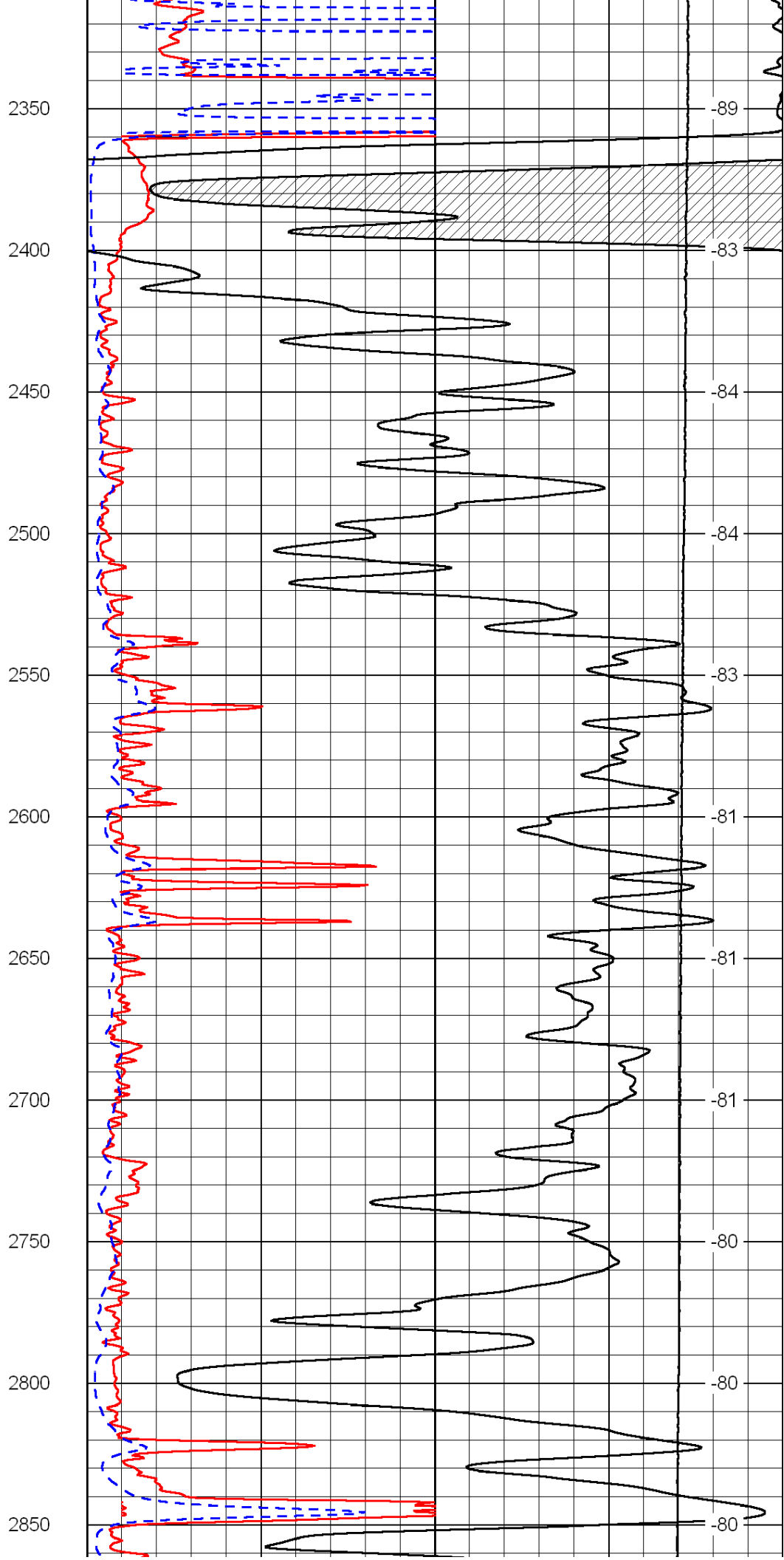
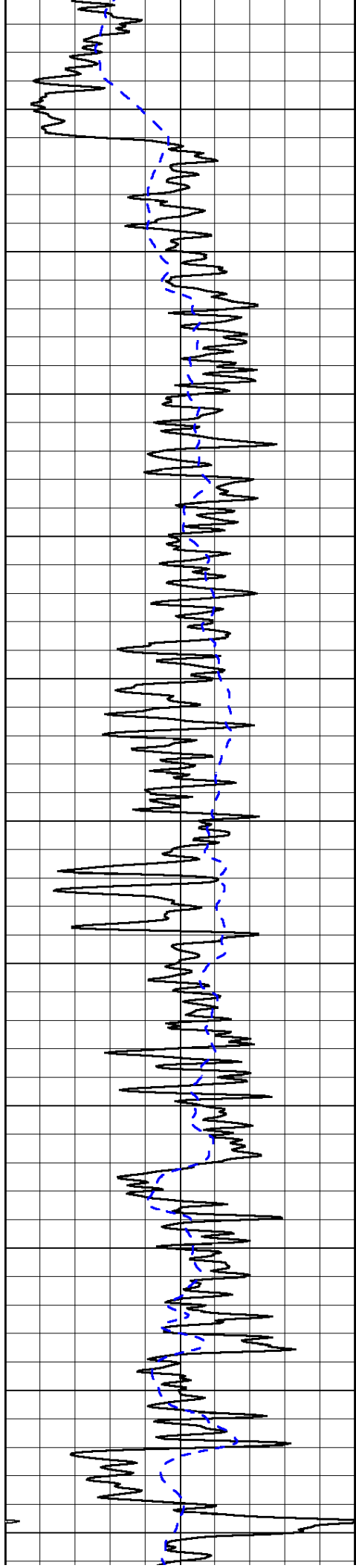
50	Shallow Resistivity	500
50	Deep Resistivity	500

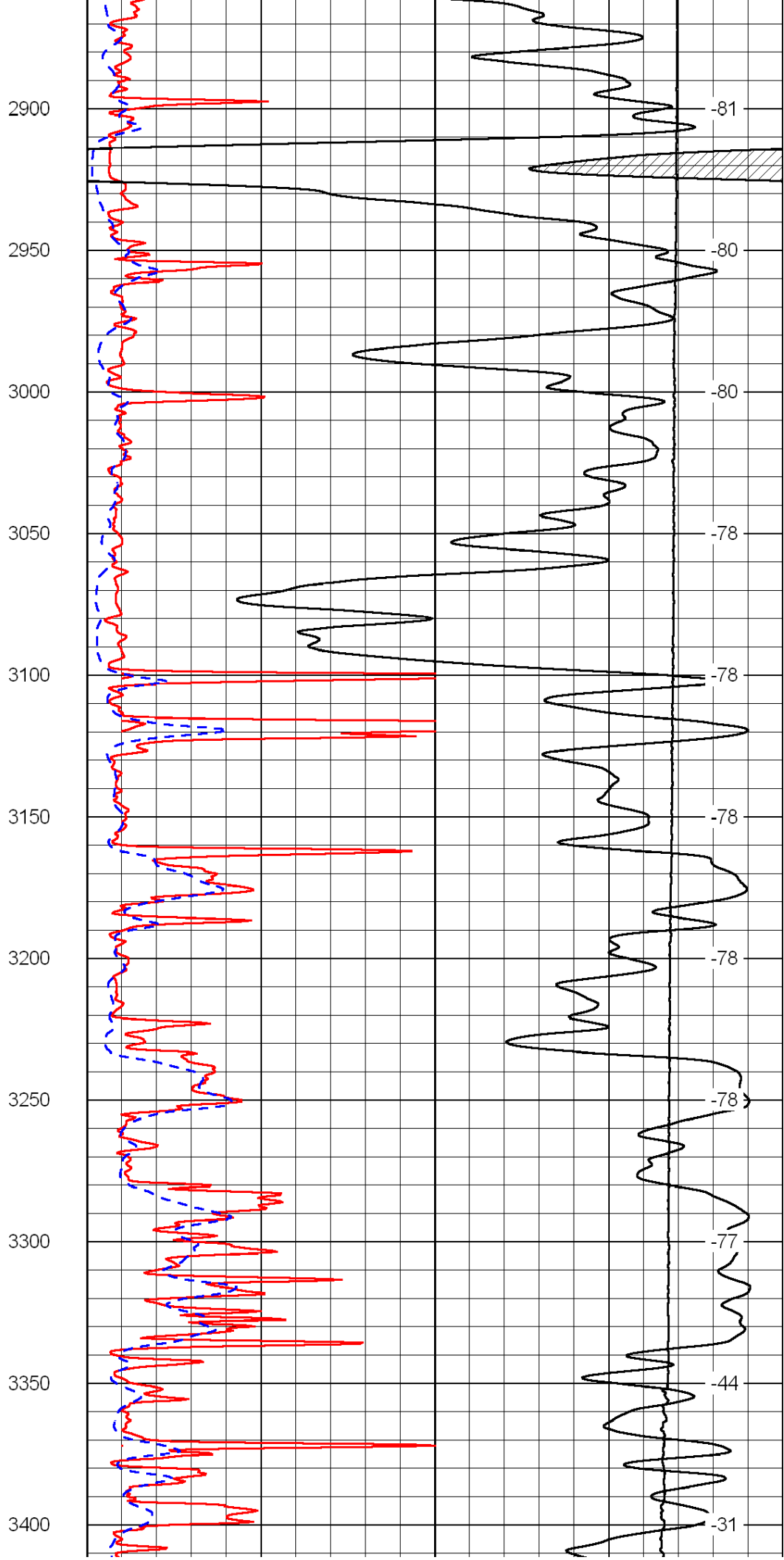
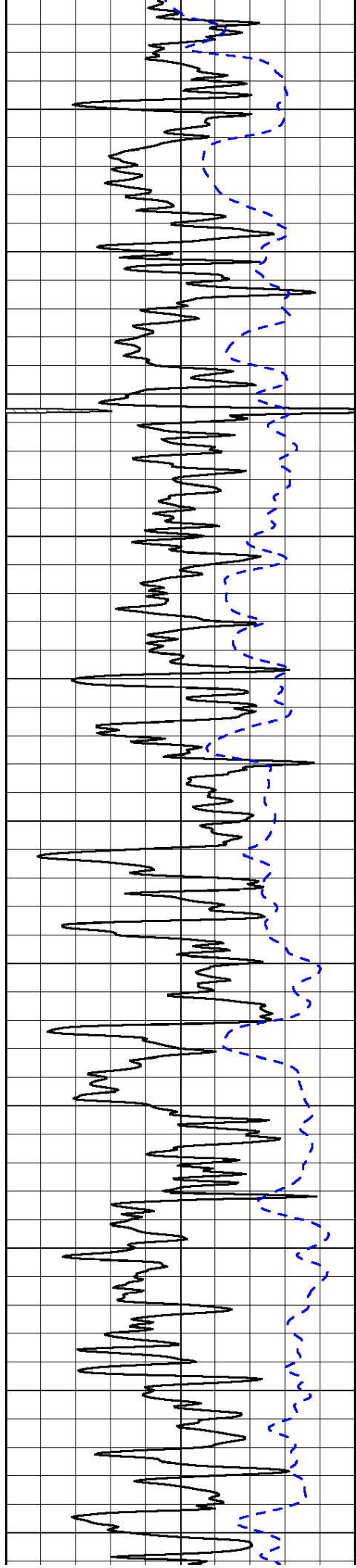


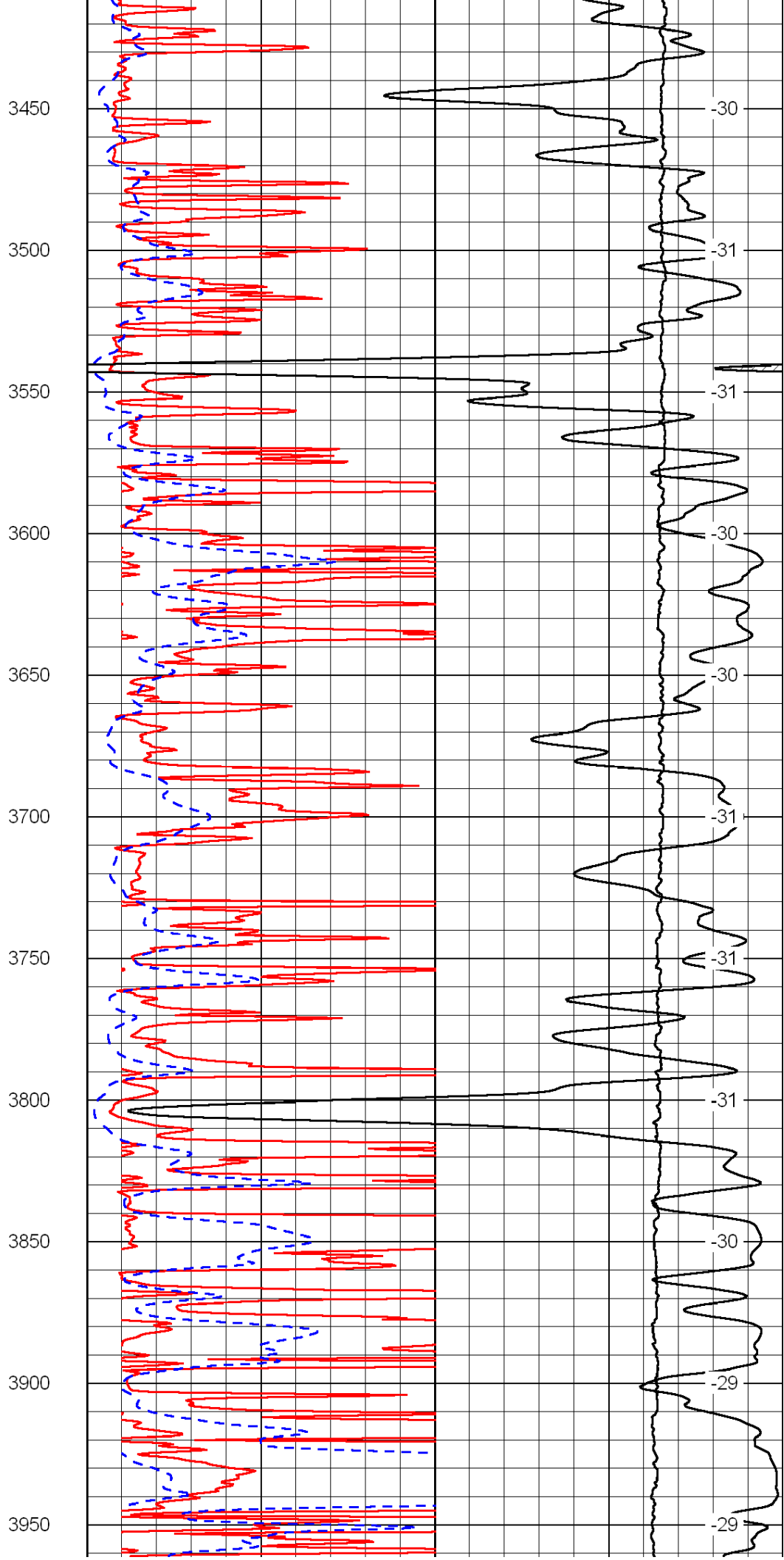
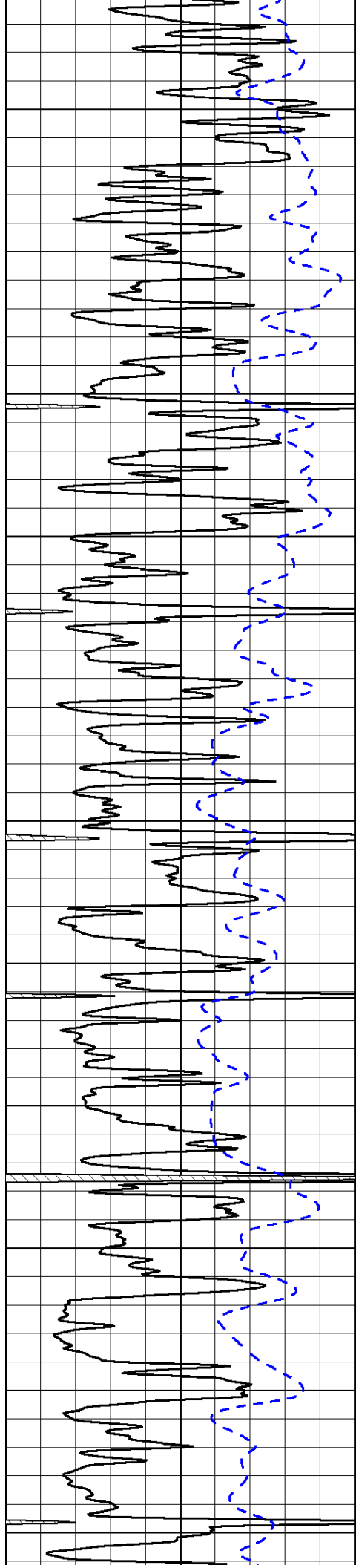


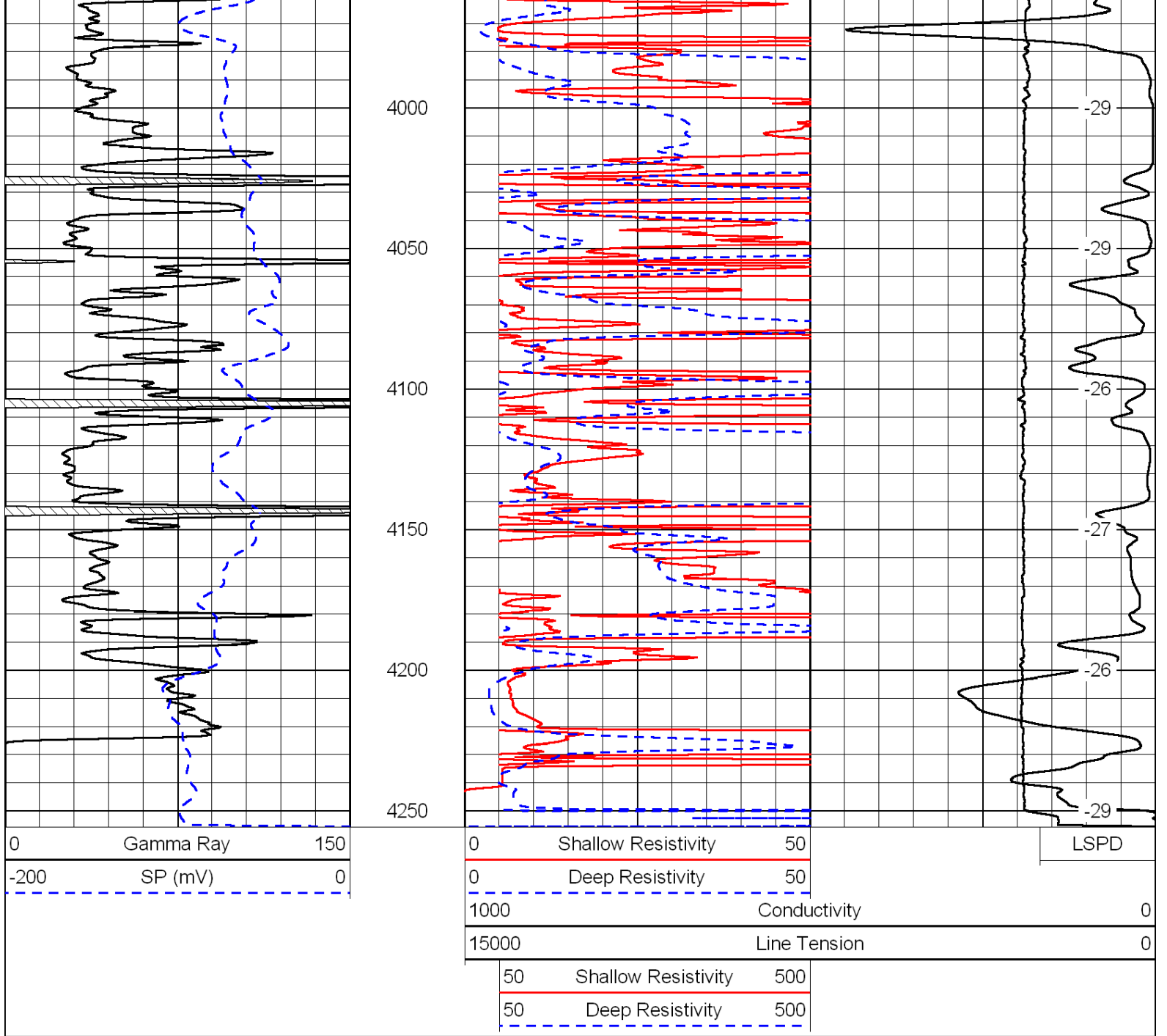




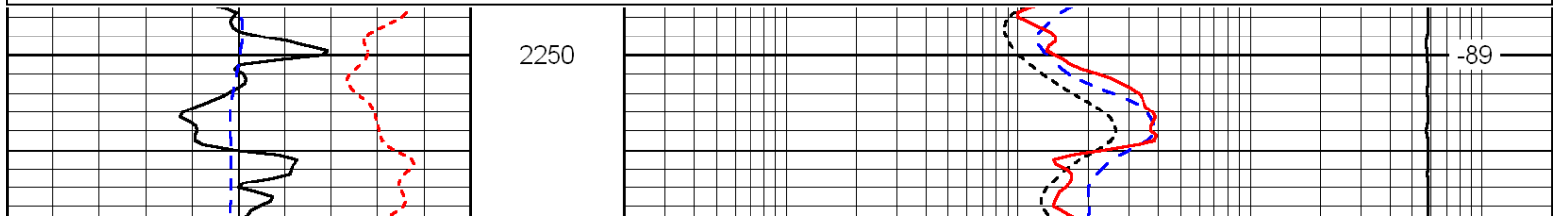
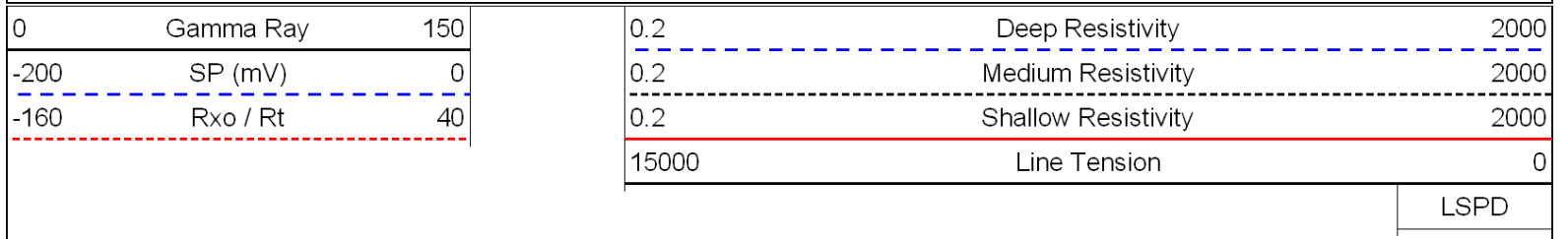


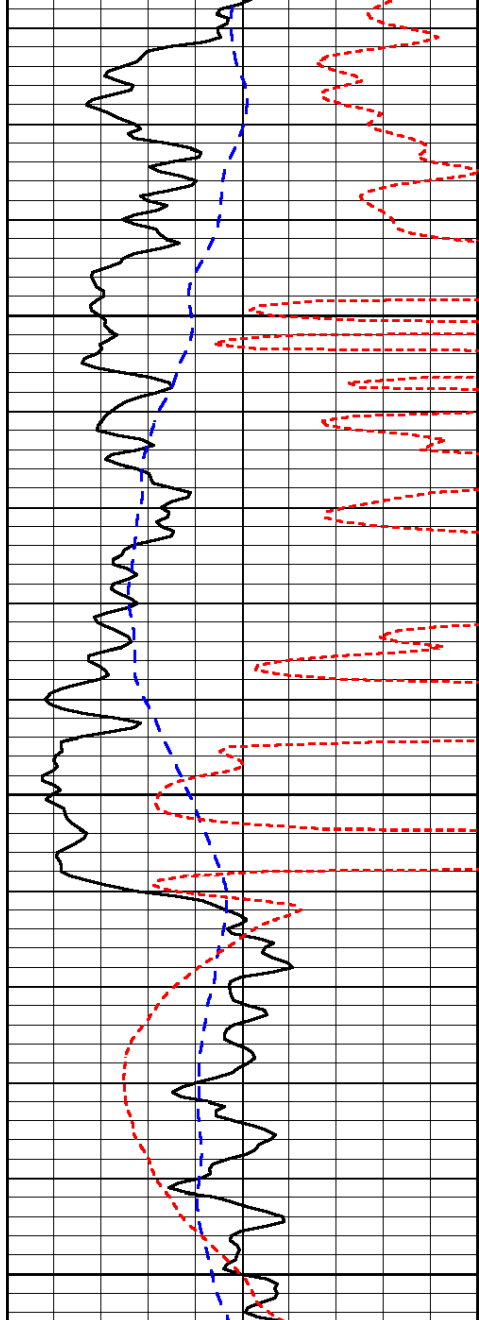






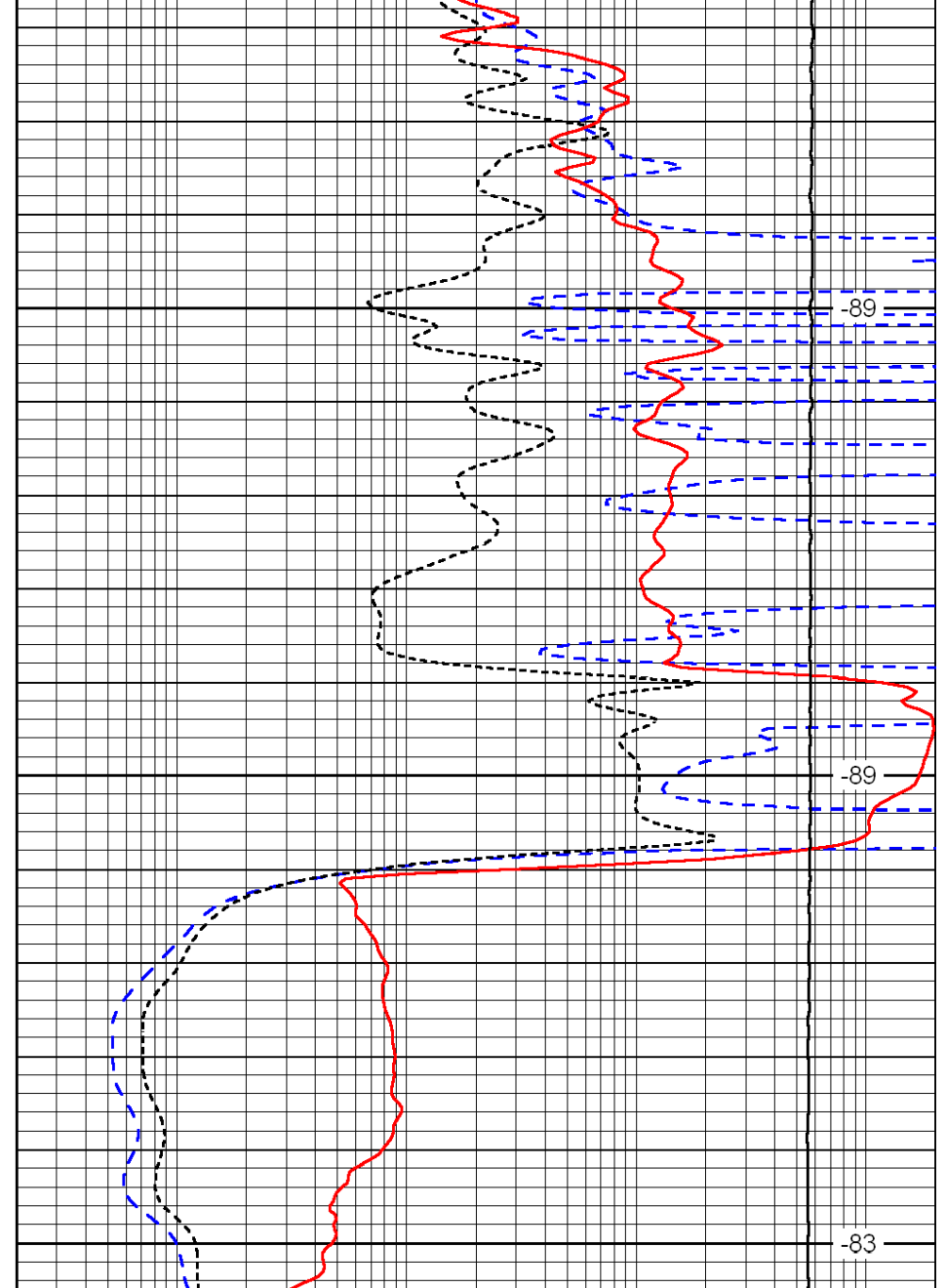
Database File: c:\warrior\data\blake\_berkgren no. 1\blake040511hd.db  
 Dataset Pathname: DIL/blakestack  
 Presentation Format: dil  
 Dataset Creation: Tue Apr 05 17:03:07 2011  
 Charted by: Depth in Feet scaled 1:240





0	Gamma Ray	150
-200	SP (mV)	0
-160	Rxo / Rt	40

2300  
2350  
2400



0.2	Deep Resistivity	2000
0.2	Medium Resistivity	2000
0.2	Shallow Resistivity	2000
15000	Line Tension	0

LSPD

Database File: c:\warrior\data\blake\_berkgren no. 1\blake040511hd.db  
 Dataset Pathname: DIL/blakestack  
 Presentation Format: dil  
 Dataset Creation: Tue Apr 05 17:03:07 2011  
 Charted by: Depth in Feet scaled 1:240

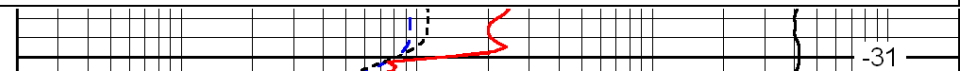
0	Gamma Ray	150
-200	SP (mV)	0
-160	Rxo / Rt	40

0.2	Deep Resistivity	2000
0.2	Medium Resistivity	2000
0.2	Shallow Resistivity	2000
15000	Line Tension	0

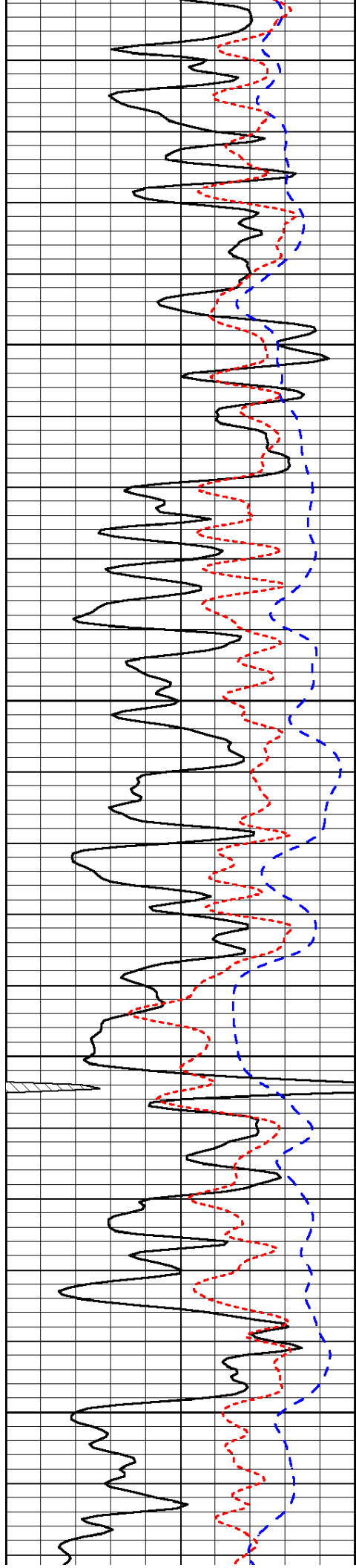
LSPD



3400



-31

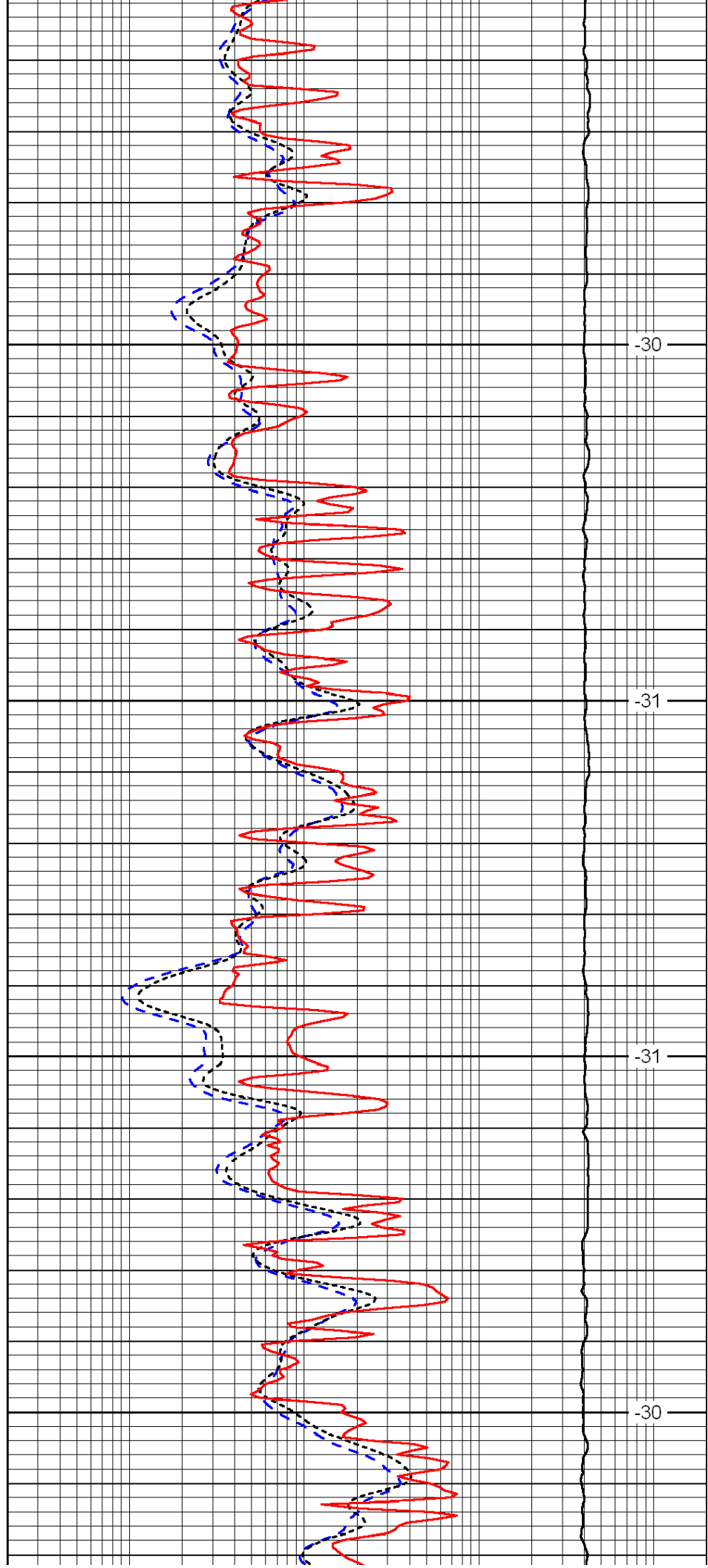


3450

3500

3550

3600

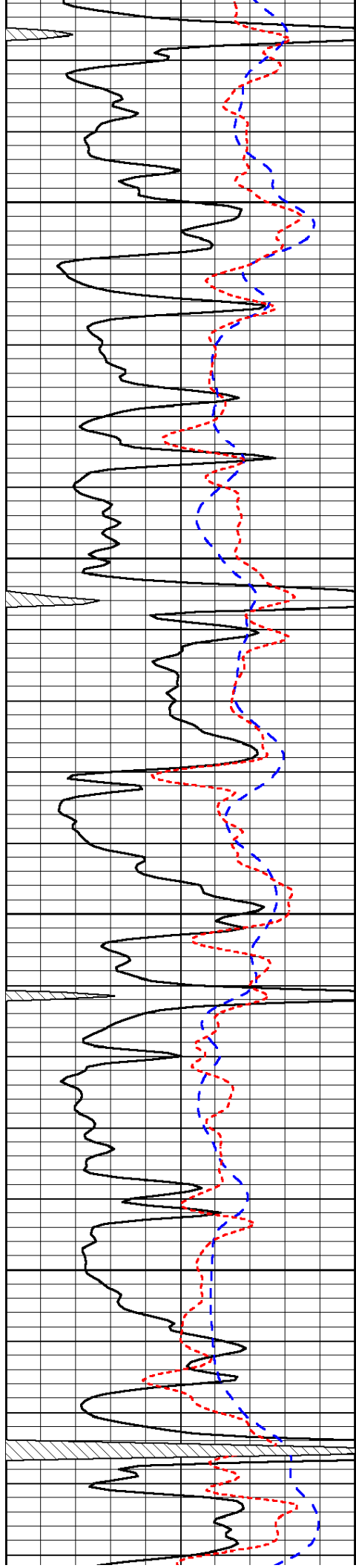


-30

-31

-31

-30

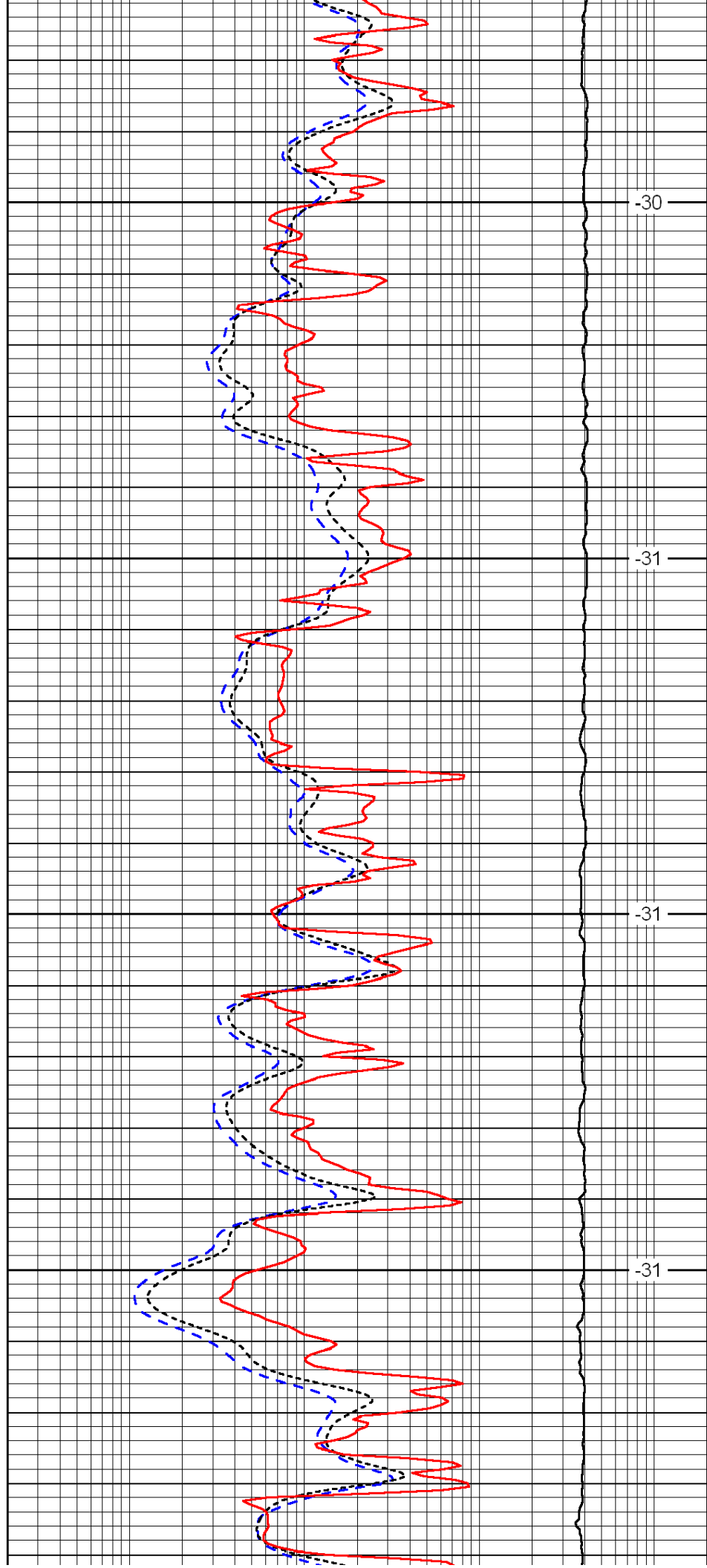


3650

3700

3750

3800

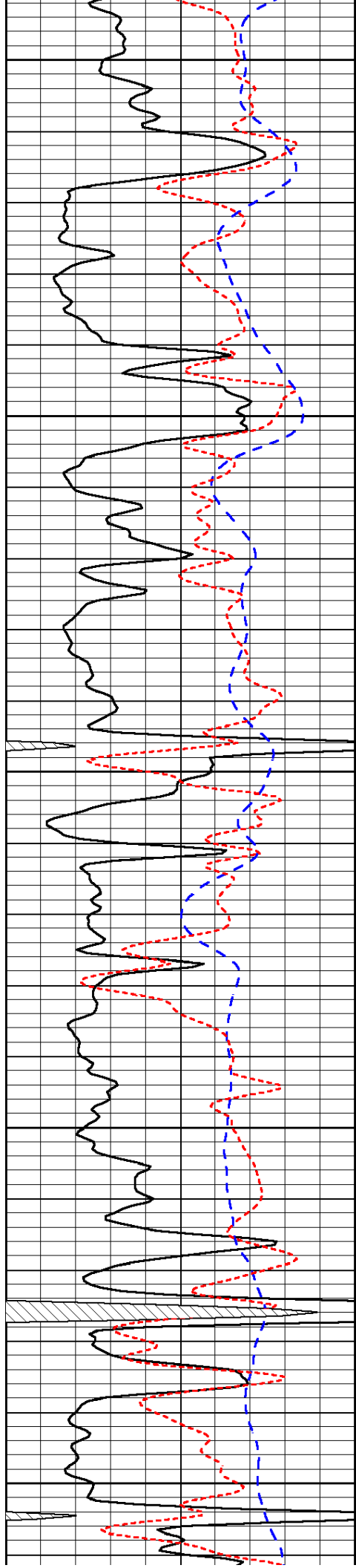


-30

-31

-31

-31



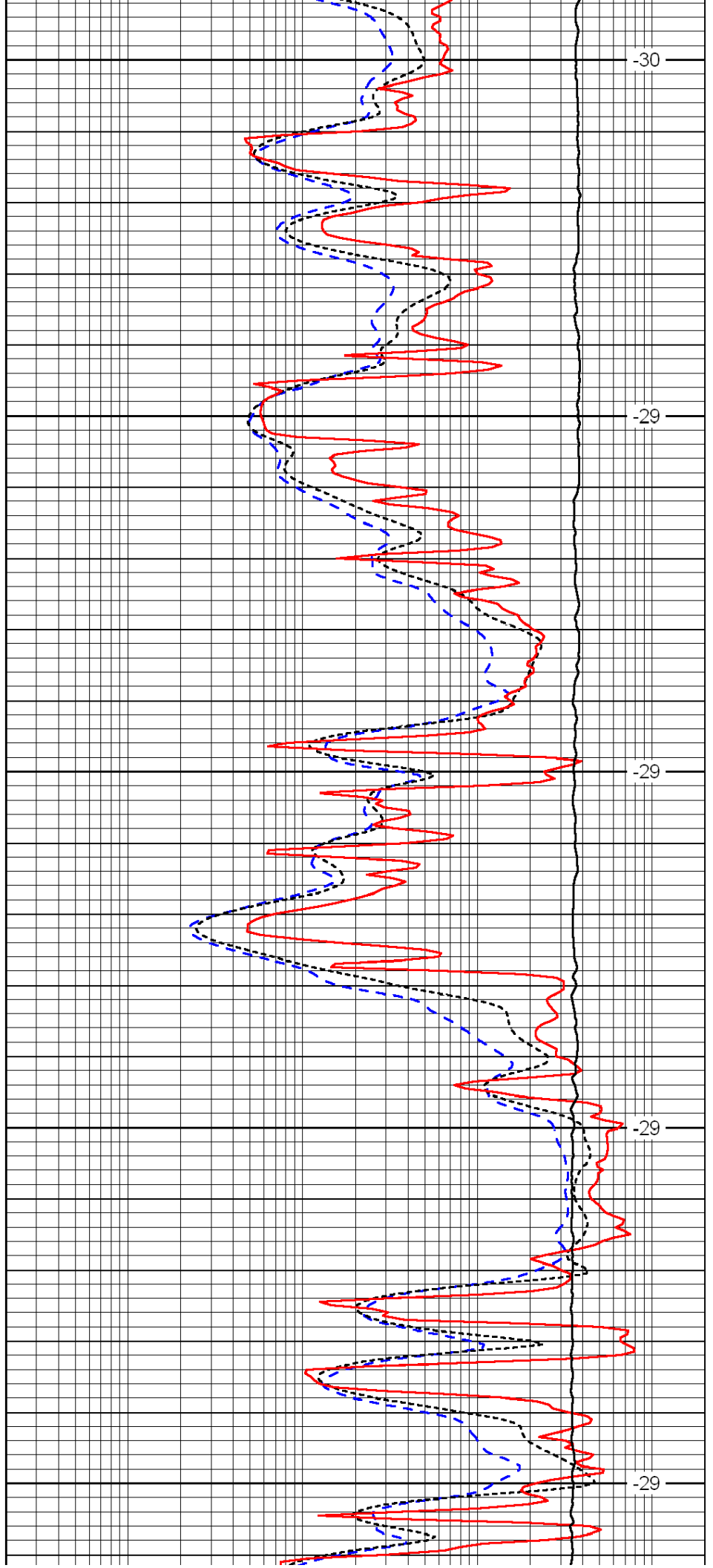
3850

3900

3950

4000

4050



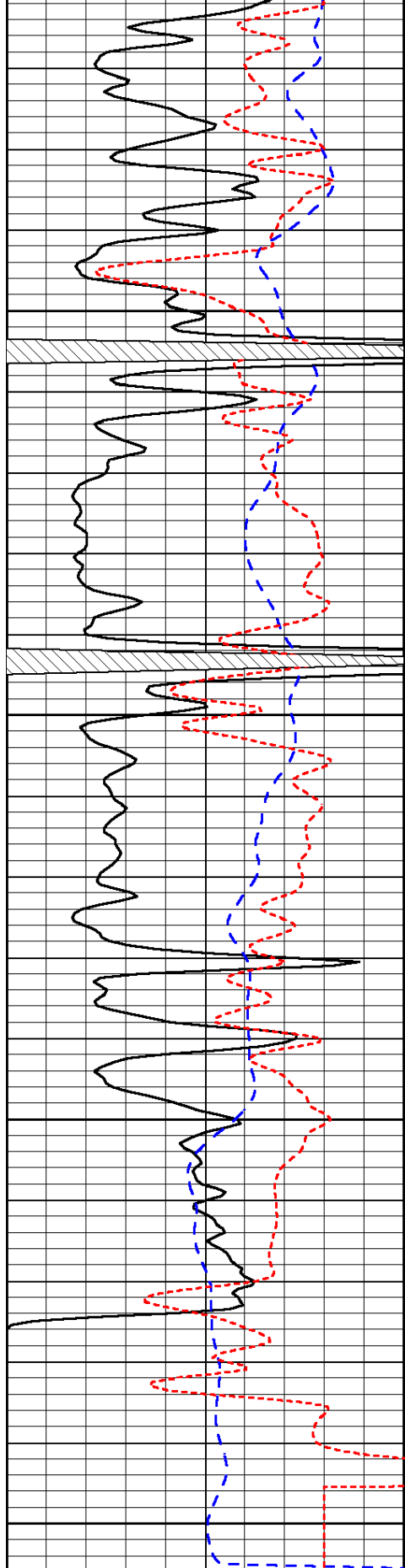
-30

-29

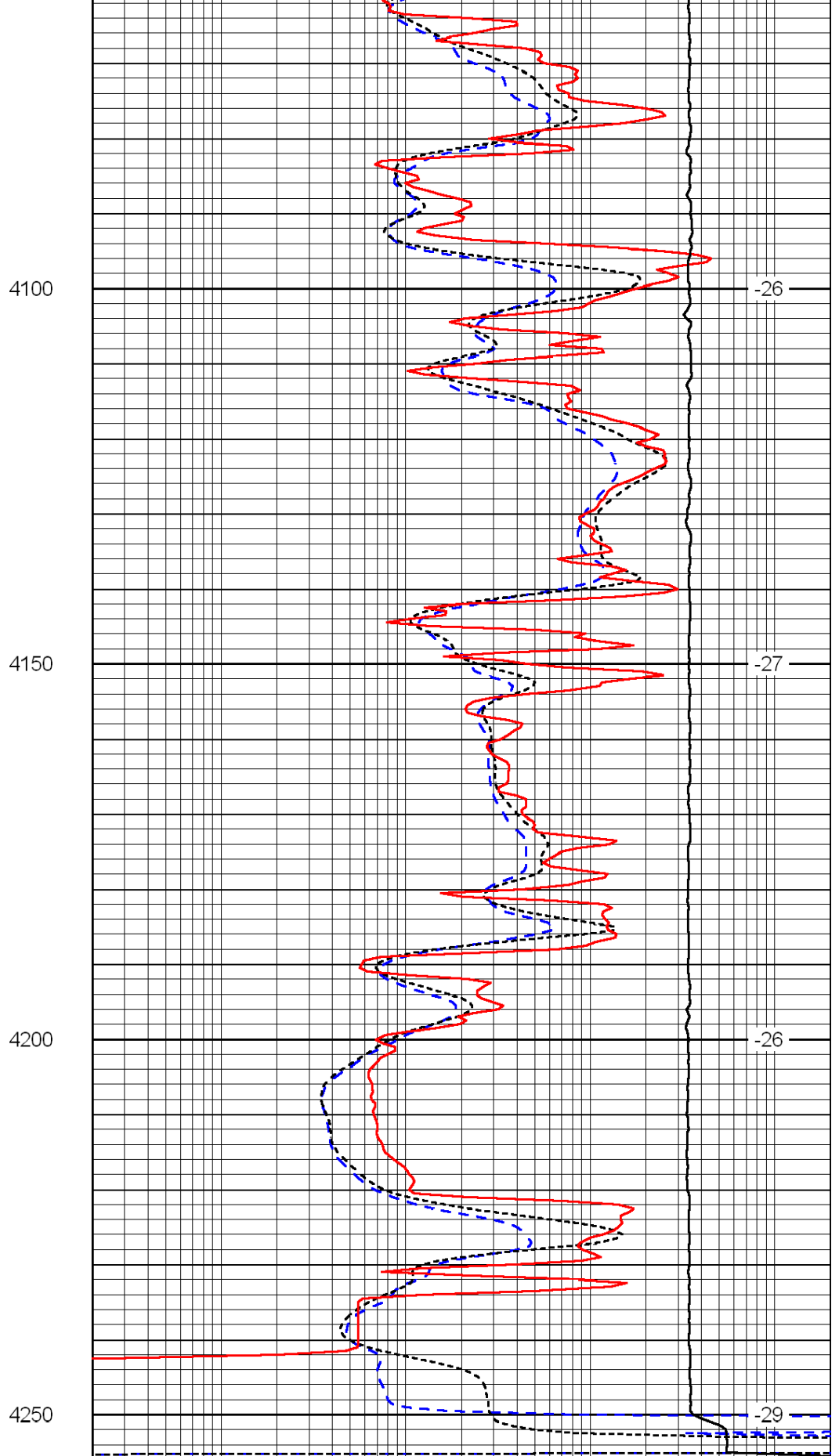
-29

-29

-29



0	Gamma Ray	150
-200	SP (mV)	0
-160	Rxo / Rt	40



0.2	Deep Resistivity	2000
0.2	Medium Resistivity	2000
0.2	Shallow Resistivity	2000
15000	Line Tension	0