



Microresistivity Log

DIGITAL LOG (785) 625-3858

15-057-20750-00-00

<p>Company American Warrior, Inc. Well Schomaker "C" #3 Field Konda Southeast County Ford State Kansas</p>	<p>Location NE SE NW SW 568' FSL / 1134' FWL</p> <p>Sec: 13 Twp: 27S Rge: 22W</p> <p>Permanant Datum Ground Level Elevation 2406 Log Measured From Kelly Bushing 9 Ft. Above Perm. Datum Drilling Measured From Kelly Bushing</p>
Other Services CNL / CDL DIL	
Elevation K.B. 2417 D.F. 2406 G.L. 2406	

Date	10/1/2011
Run Number	Two
Depth Driller	6000
Depth Logger	6000
Bottom Logged Interval	5999
Top Log Interval	4000
Casing Driller	8.625 @ 430
Casing Logger	430
Bit Size	7.875
Type Fluid in Hole	Chemical
Salinity, ppm CL	3800
Density / Viscosity	9.6 48
pH / Fluid Loss	10.0 9.6
Source of Sample	Flowline
Rm @ Meas. Temp	1.50 @ 80
Rmf @ Meas. Temp	1.13 @ 80
Rmc @ Meas. Temp	2.03 @ 80
Source of Rmf / Rmc	Charts
Rm @ BHT	0.88 @ 136
Operating Rig Time	6 Hours
Max Rec. Temp. F	136
Equipment Number	15
Location	Hays
Recorded By	R. Barnhart
Witnessed By	Harley Savles

<<< Fold Here >>>

All interpretations are opinions based on inferences from electrical or other measurements and we cannot and do not guarantee the accuracy or correctness of any interpretation, and we shall not, except in the case of gross or willful negligence on our part, be liable or responsible for any loss, costs, damages, or expenses incurred or sustained by anyone resulting from any interpretation made by any of our officers, agents or employees. These interpretations are also subject to our general terms and conditions set out in our current Price Schedule.

Comments

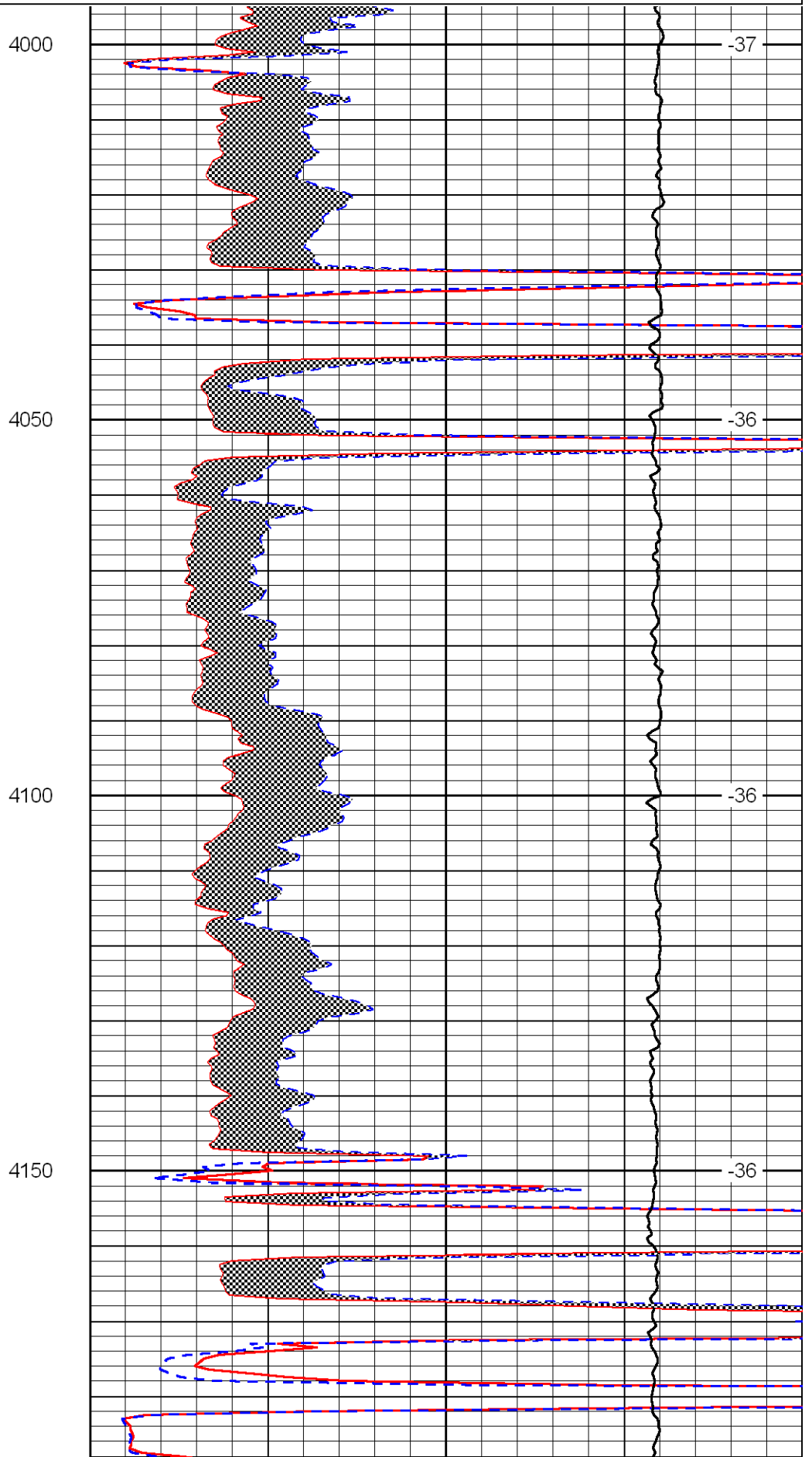
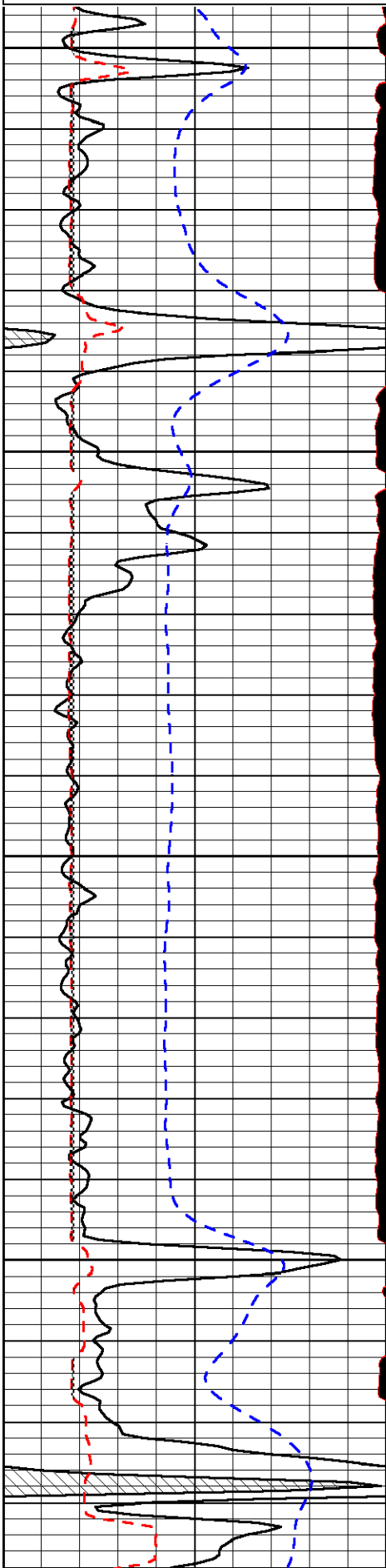
Thank you for using Log-Tech, Inc.
 (785) 625-3858

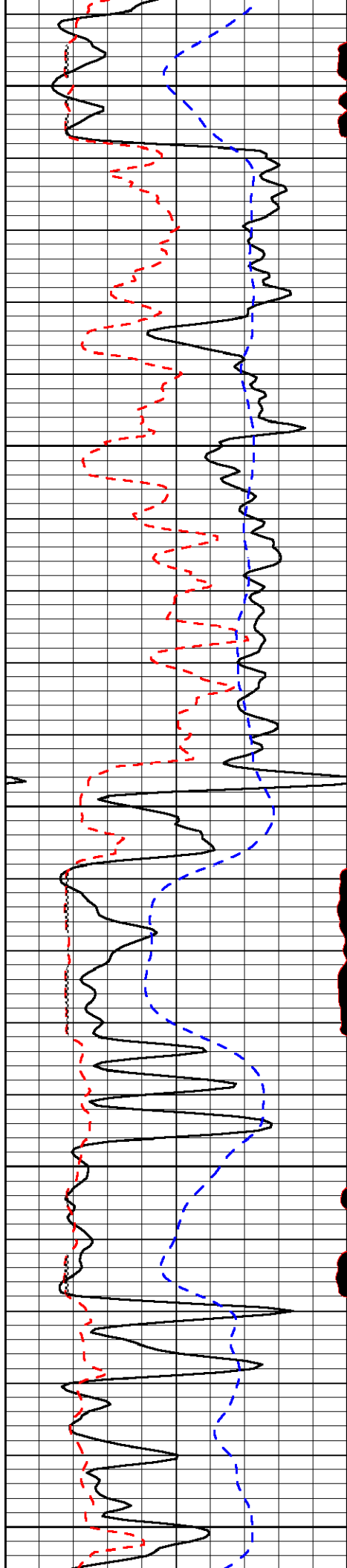
 Ford, KS:
 2N to Ridge Rd., 3 1/2E to 129 Rd.,
 2N to Primus Rd., 1/4E, N into

Database File: amwarhd.db
 Dataset Pathname: dil/amwmain
 Presentation Format: micro
 Dataset Creation: Sat Oct 01 12:42:11 2011
 Charted by: Depth in Feet scaled 1:240

0	Gamma Ray	150
6	MCAL (GAPI)	16
2.875	Mud Cake (GAPI)	7.875
-200	SP	0

0	Micro Inverse 1 X 1	40
0	Micro Normal 2"	40
10000	Line Weight	0
		LSPD





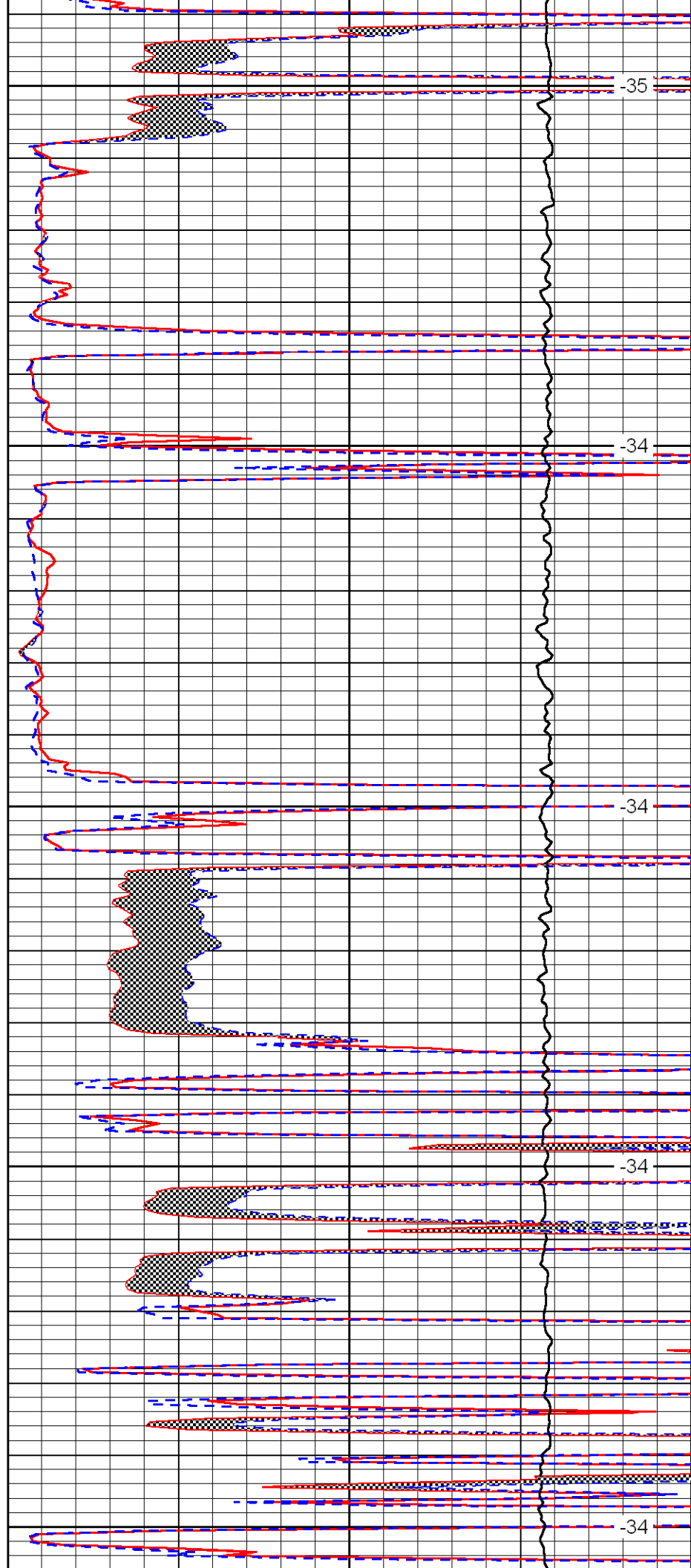
4200

4250

4300

4350

4400



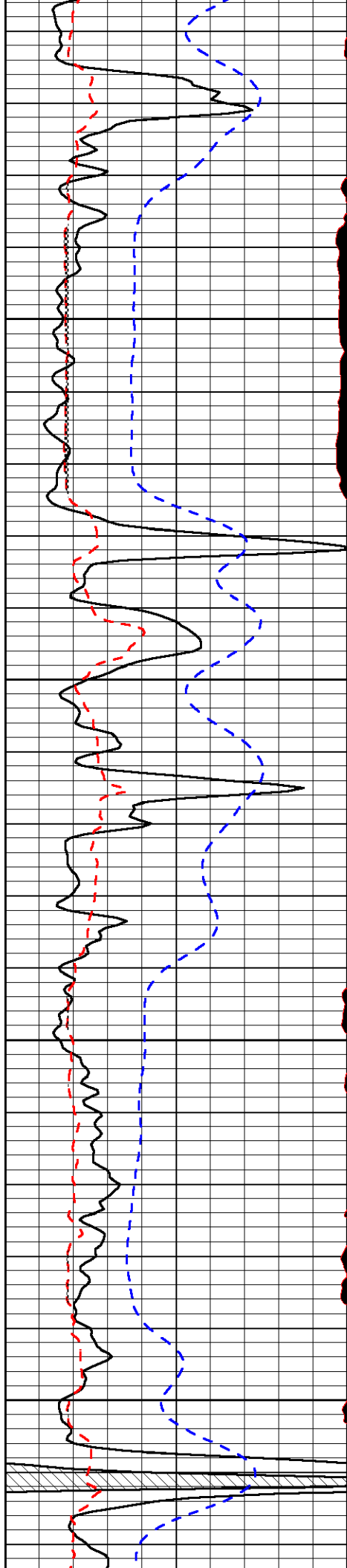
-35

-34

-34

-34

-34

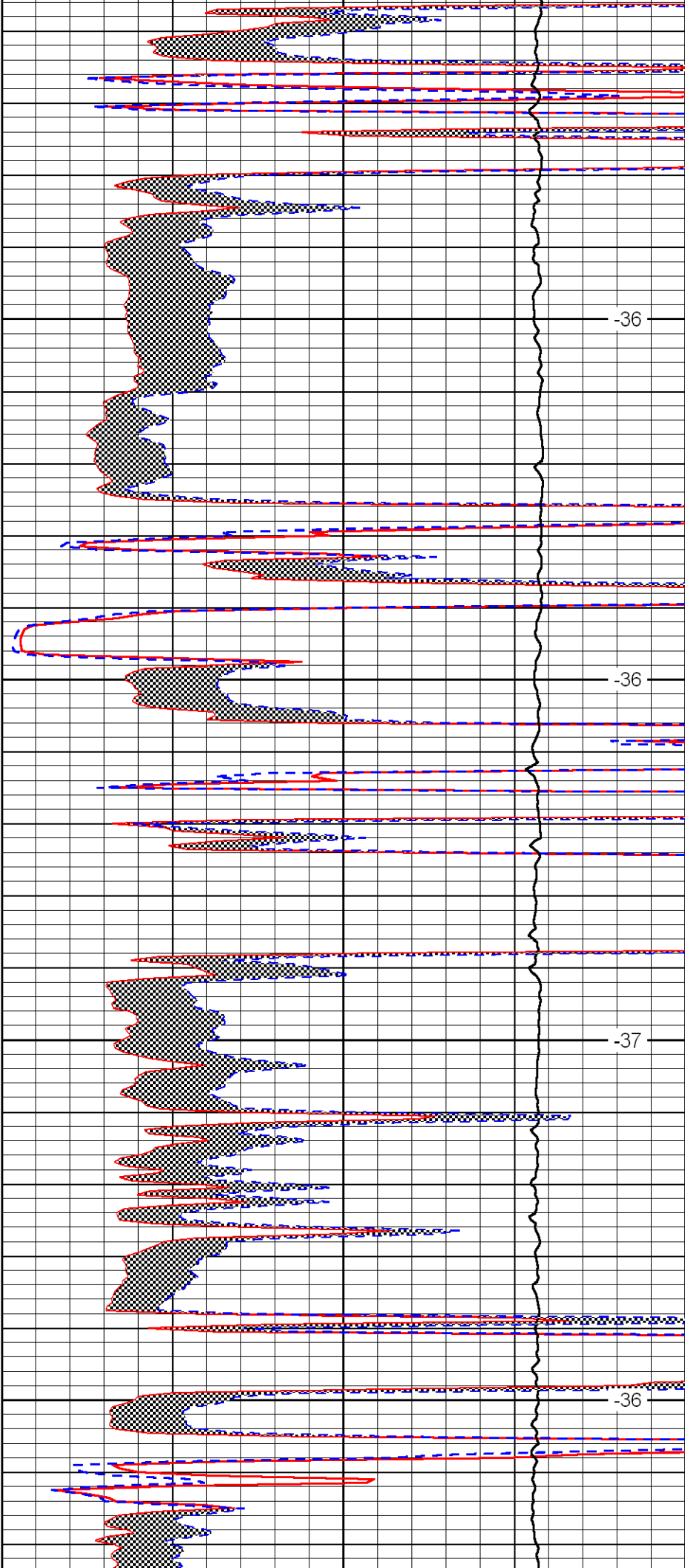


4450

4500

4550

4600

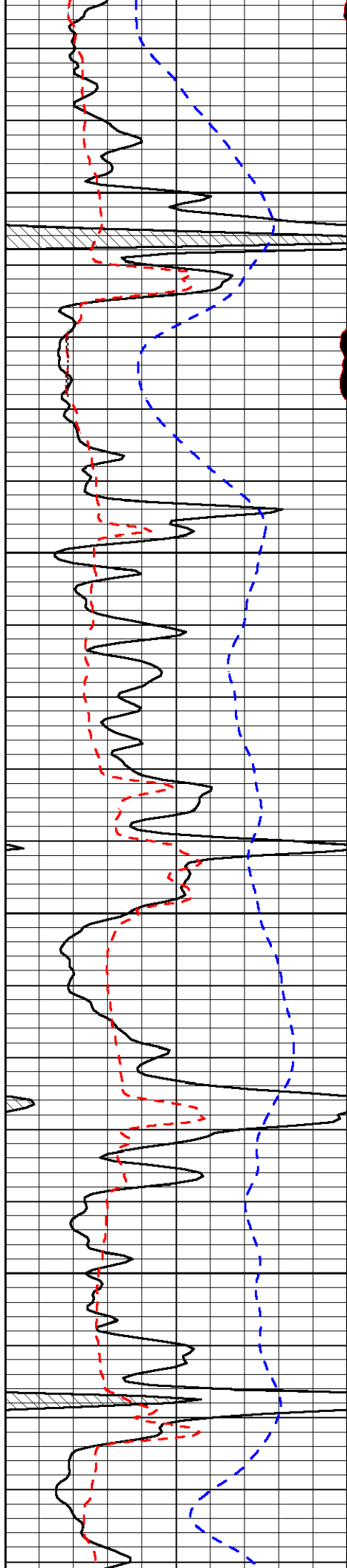


-36

-36

-37

-36

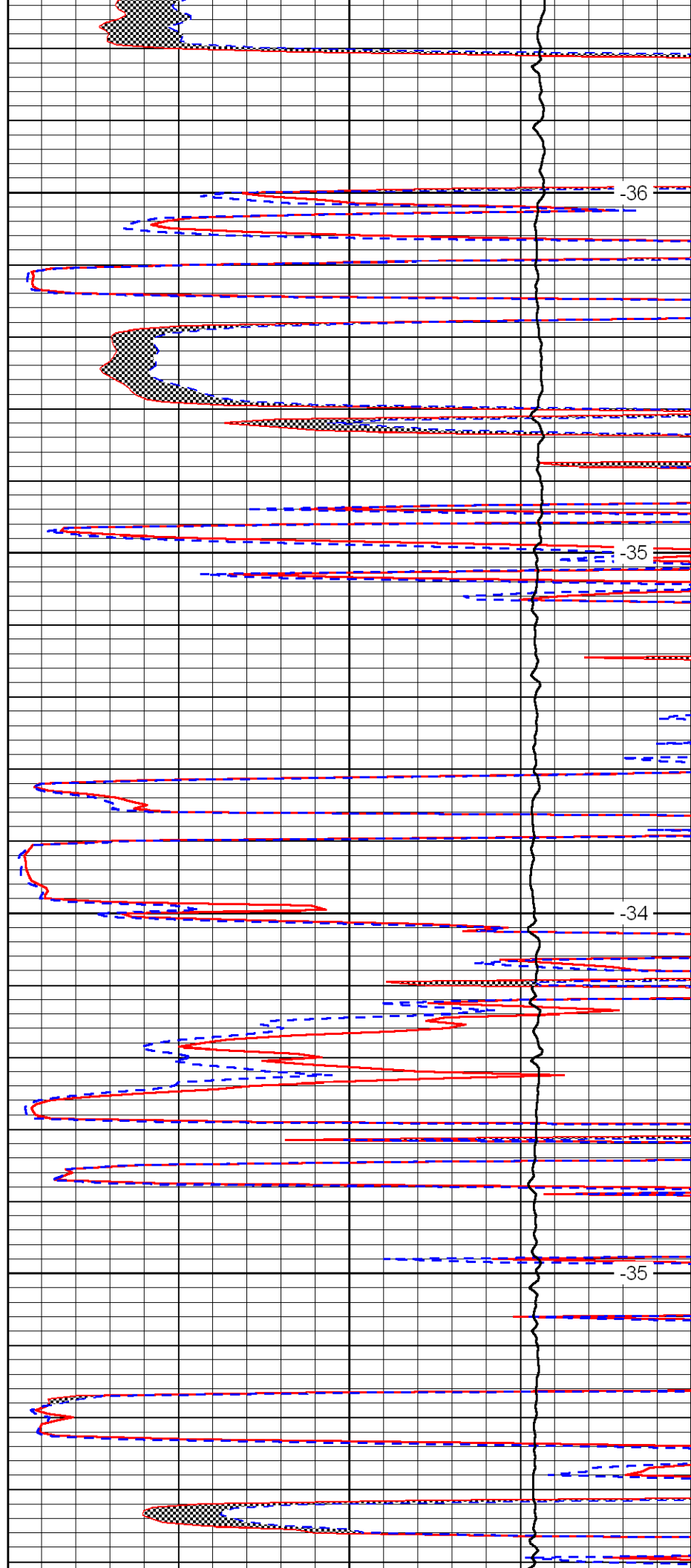


4650

4700

4750

4800

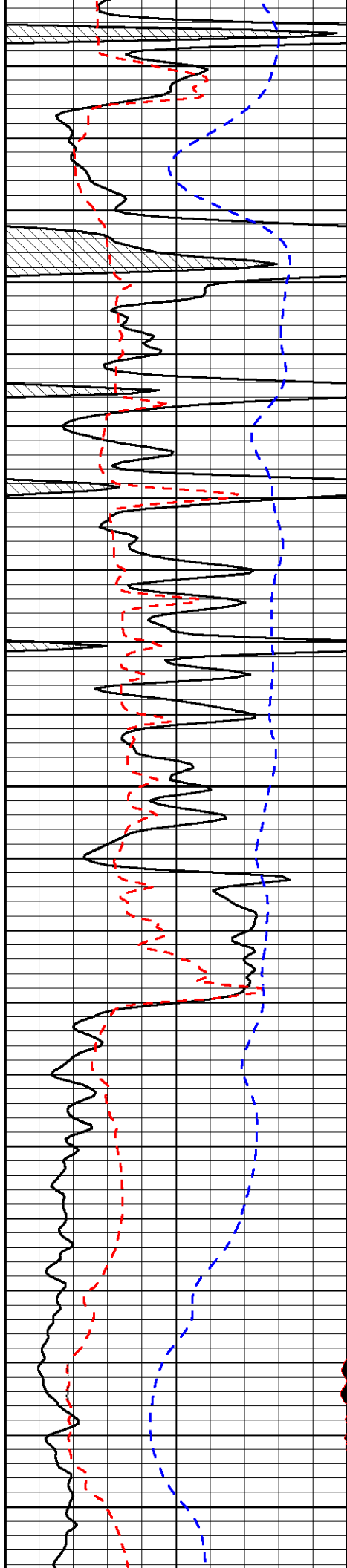


-36

-35

-34

-35



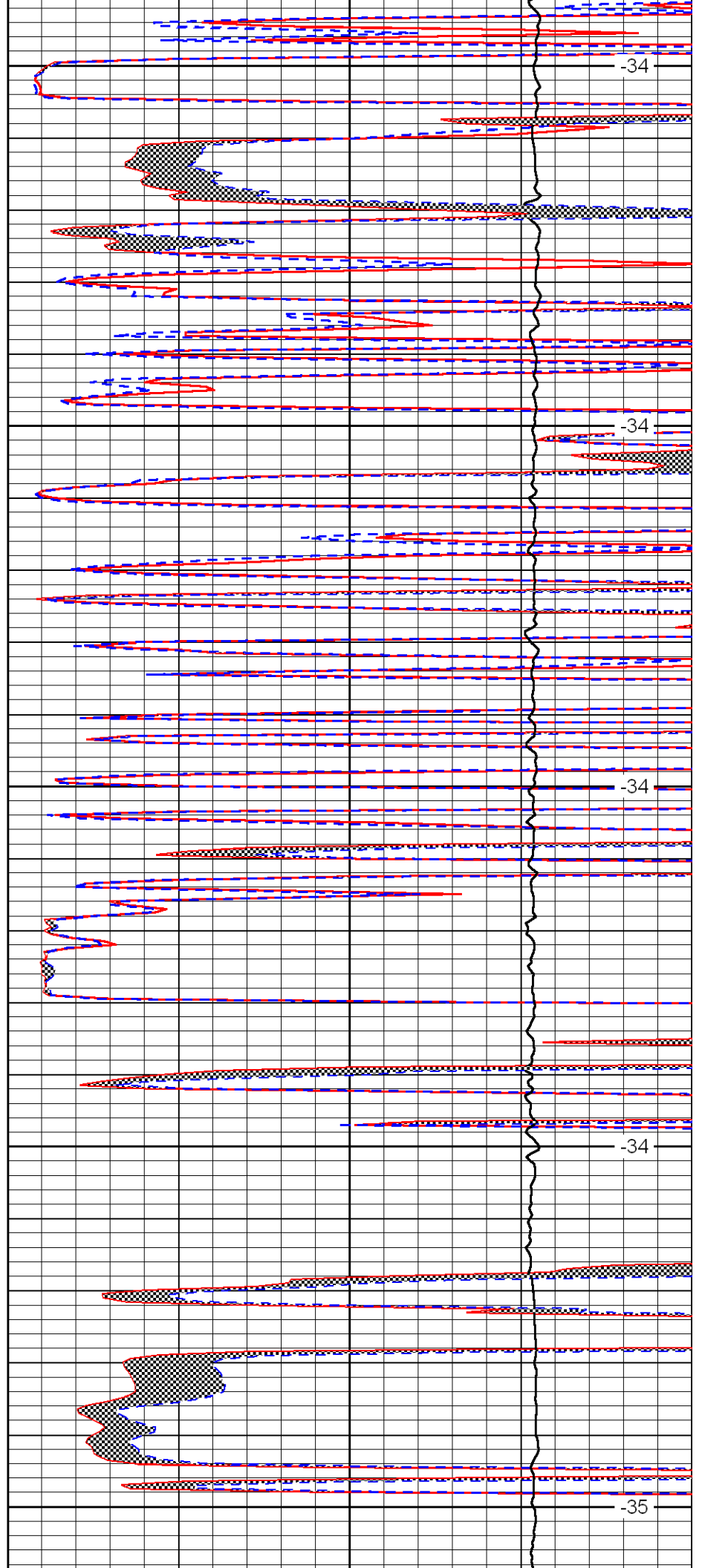
4850

4900

4950

5000

5050



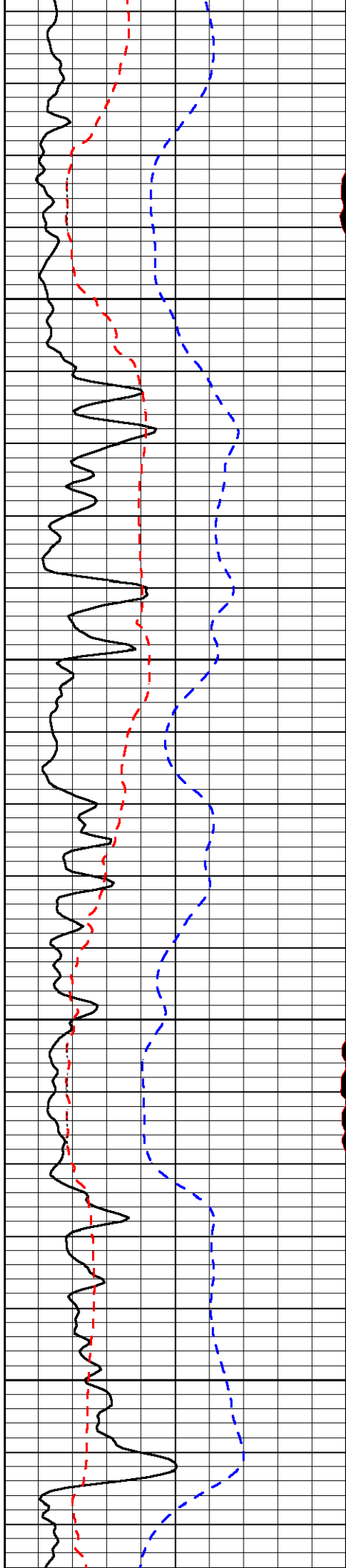
-34

-34

-34

-34

-35

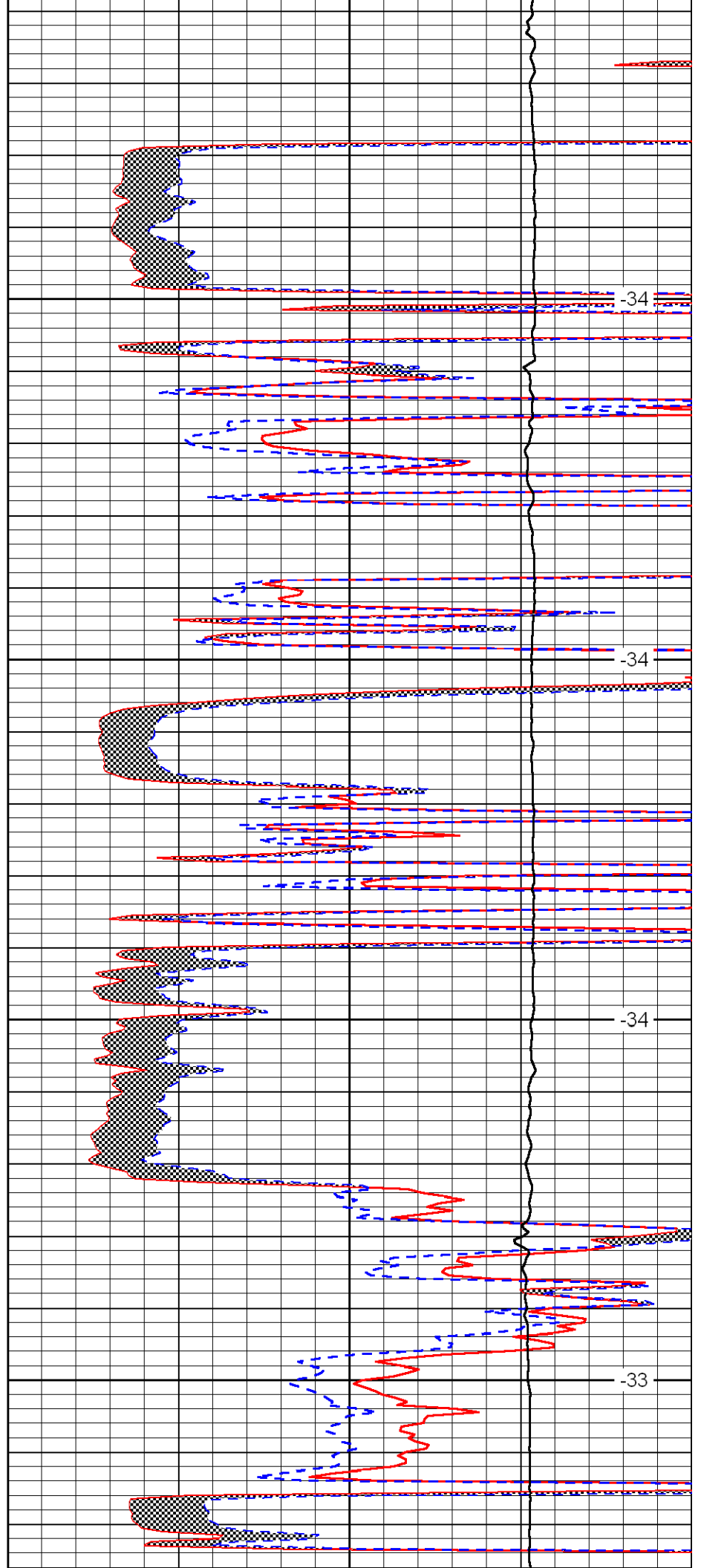


5100

5150

5200

5250

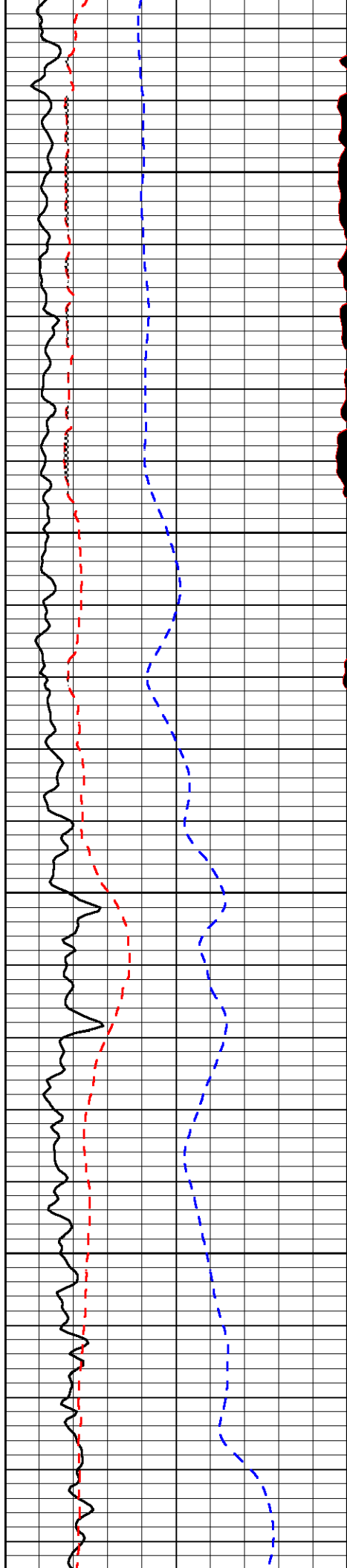


-34

-34

-34

-33

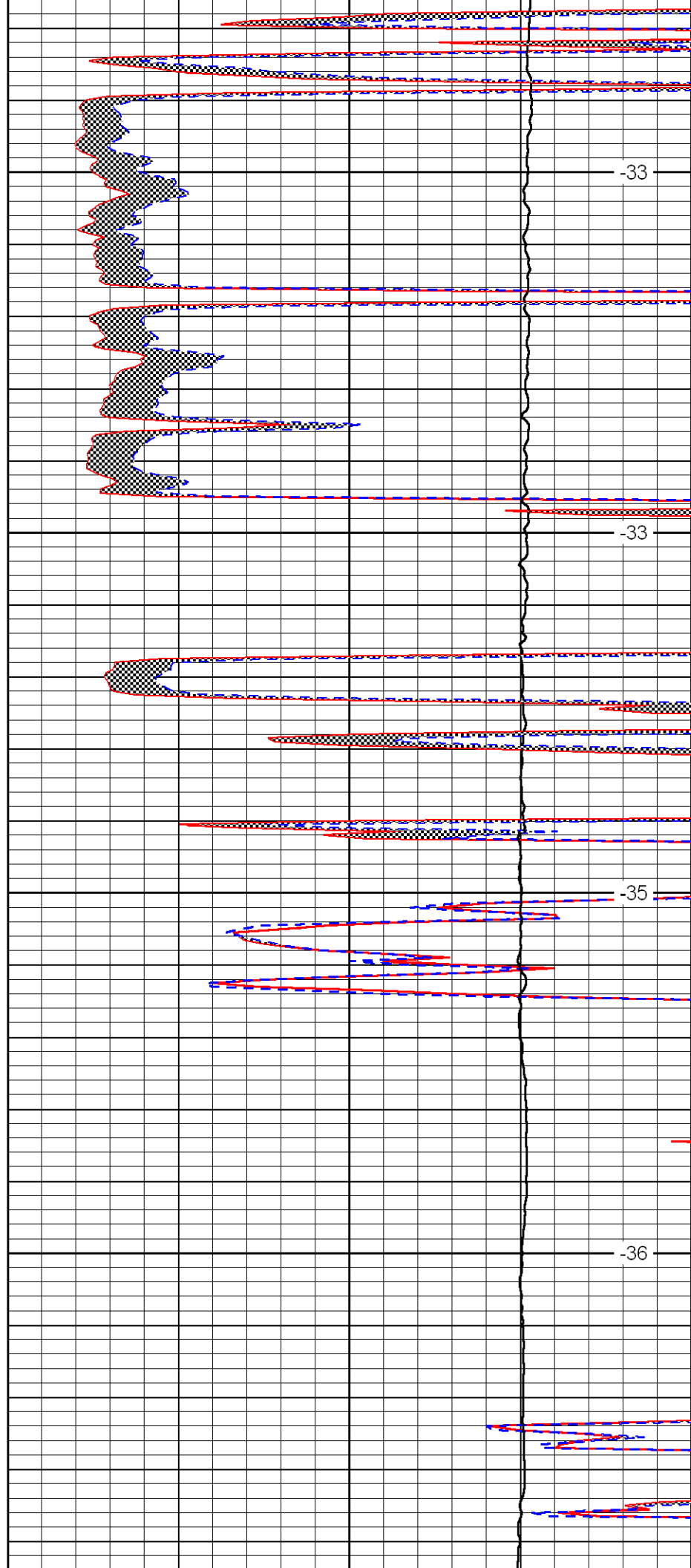


5300

5350

5400

5450

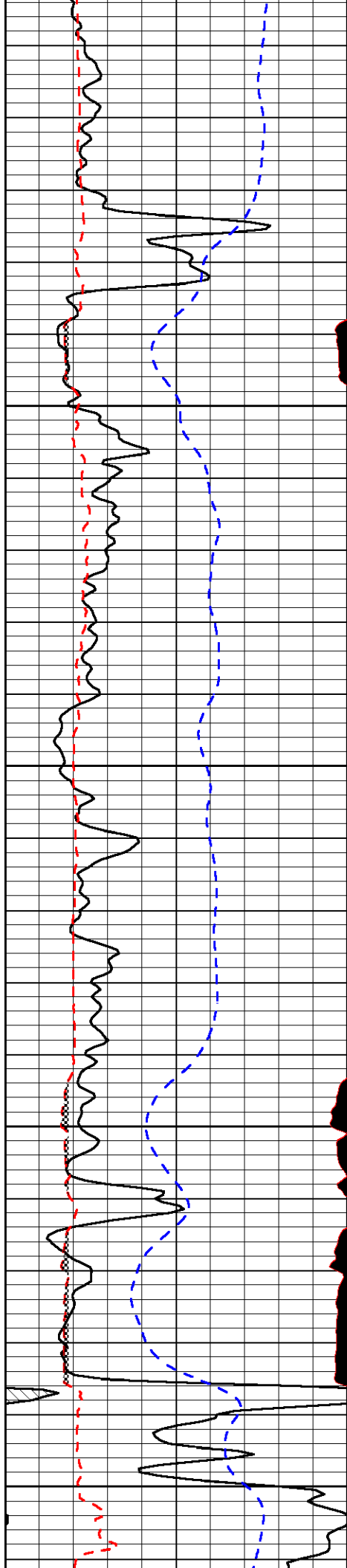


-33

-33

-35

-36



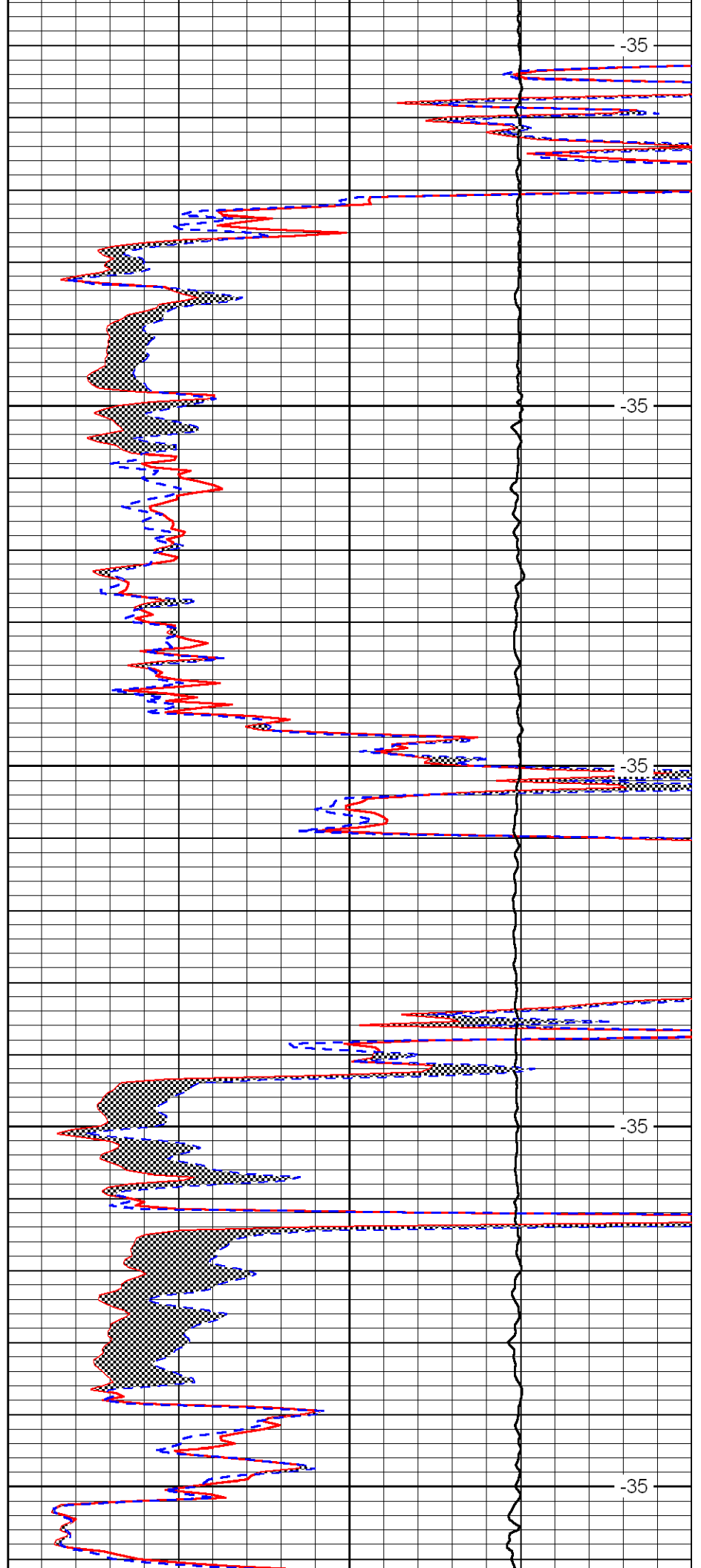
5500

5550

5600

5650

5700



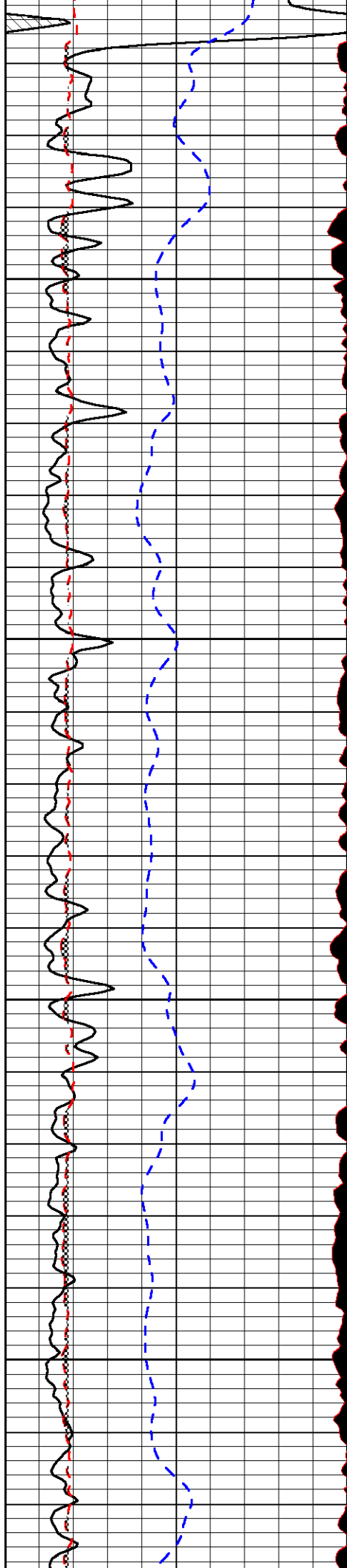
-35

-35

-35

-35

-35

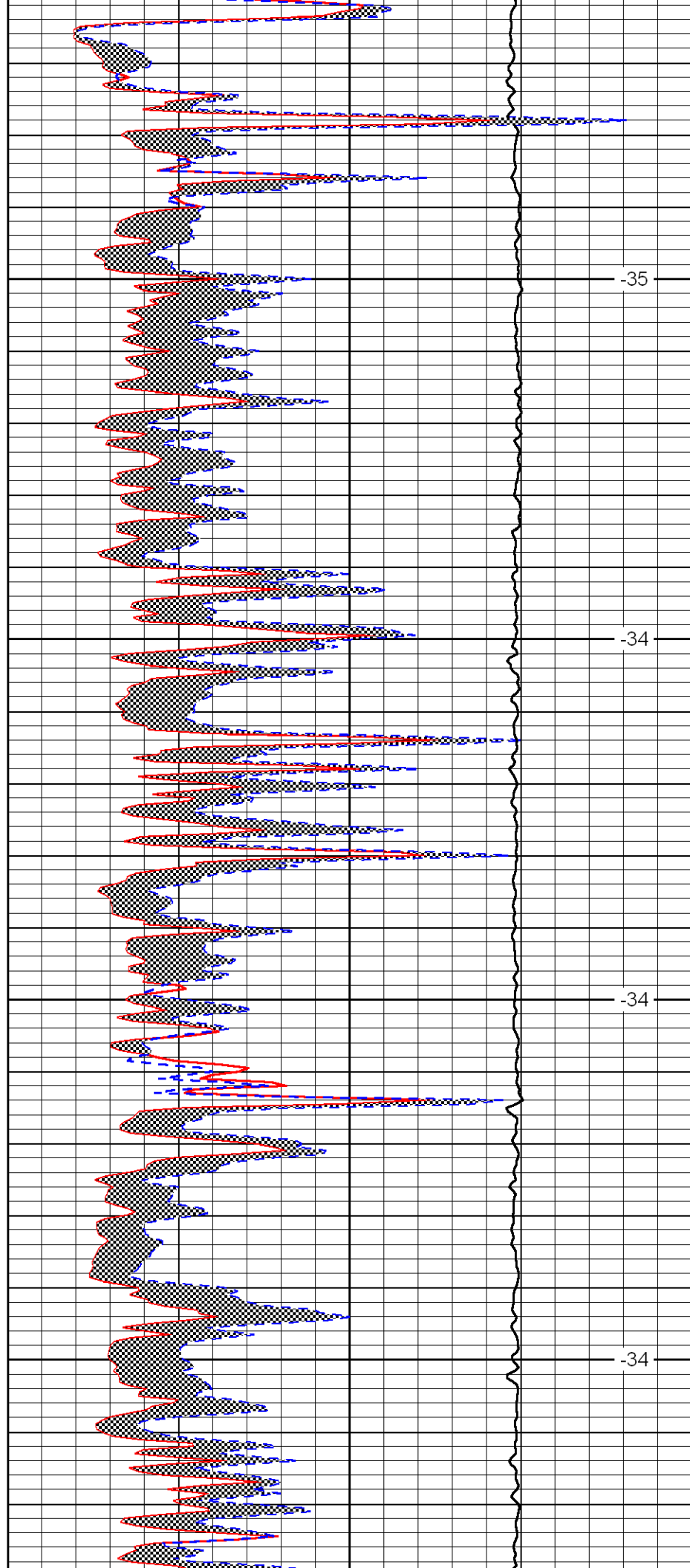


5750

5800

5850

5900

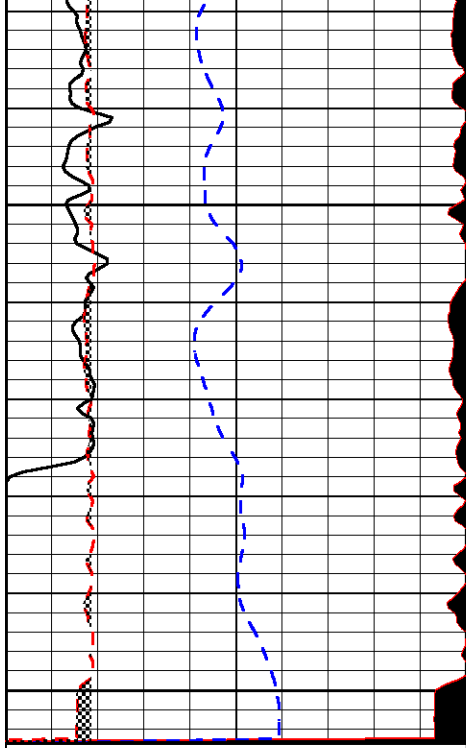


-35

-34

-34

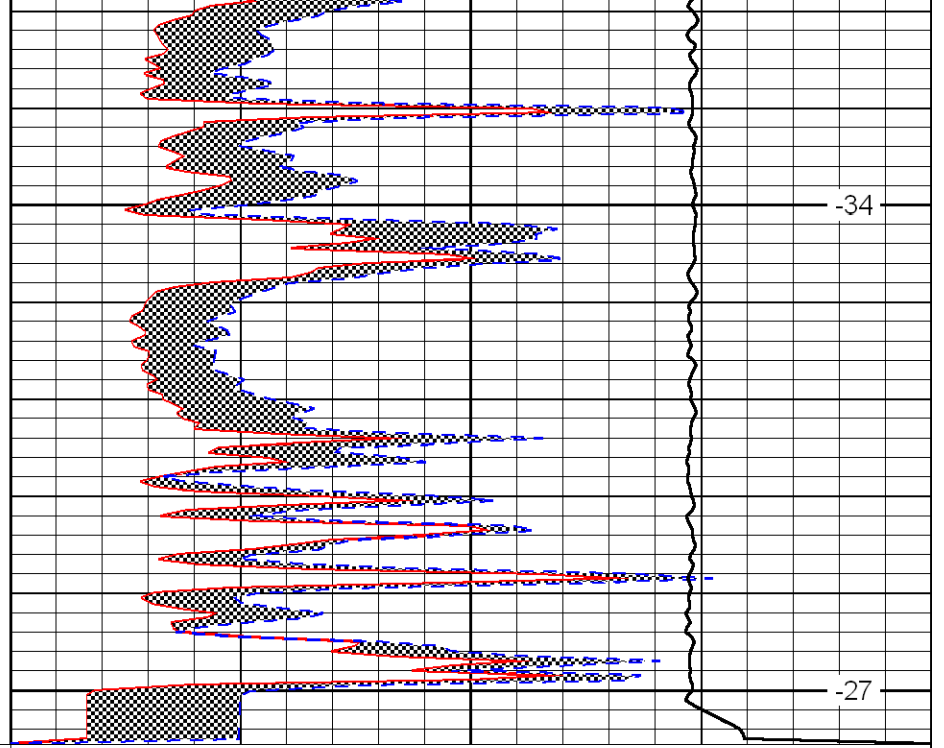
-34



0	Gamma Ray	150
6	MCAL (GAPI)	16
2.875	Mud Cake (GAPI)	7.875
-200	SP	0

5950

6000



0	Micro Inverse 1 X 1	40
0	Micro Normal 2''	40
10000	Line Weight	0

-34

-27

LSPD