



Dual Compensated Porosity Log

DIGITAL LOG (785) 625-3858

API No. 15-057-20750-00-00

Company American Warrior, Inc.
 Well Schomaker "C" #3
 Field Konda Southeast
 County Ford State Kansas

Location NE SE NW SW
 568' FSL / 1134' FWL

Sec: 13 Twp: 27S Rge: 22W

Other Services
 DIL/MEL

Permanent Datum Ground Level Elevation 2406
 Log Measured From Kelly Bushing 9 Ft. Above Perm. Datum
 Drilling Measured From Kelly Bushing

K.B. 2417
 D.F. G.L. 2406

Date	10/1/2011
Run Number	One
Type Log	CNL / CDL
Depth Driller	6000
Depth Logger	6000
Bottom Logged Interval	5979
Top Logged Interval	4000
Type Fluid In Hole	Chemical
Salinity, PPM CL	3800
Density	9.6
Level	Full
Max. Rec. Temp. F	136
Operating Rig Time	6 Hours
Equipment -- Location	15 Hays
Recorded By	R. Barnhart
Witnessed By	Harley Savles

Borehole Record				Casing Record			
Run No	Bit	From	To	Size	Wgt.	From	To
One	12.25	00	430	8.625	23#	00	430
Two	7.875	430	TD				

<<< Fold Here >>>

All interpretations are opinions based on inferences from electrical or other measurements and we cannot and do not guarantee the accuracy or correctness of any interpretation, and we shall not, except in the case of gross or willful negligence on our part, be liable or responsible for any loss, costs, damages, or expenses incurred or sustained by anyone resulting from any interpretation made by any of our officers, agents or employees. These interpretations are also subject to our general terms and conditions set out in our current Price Schedule.

Comments

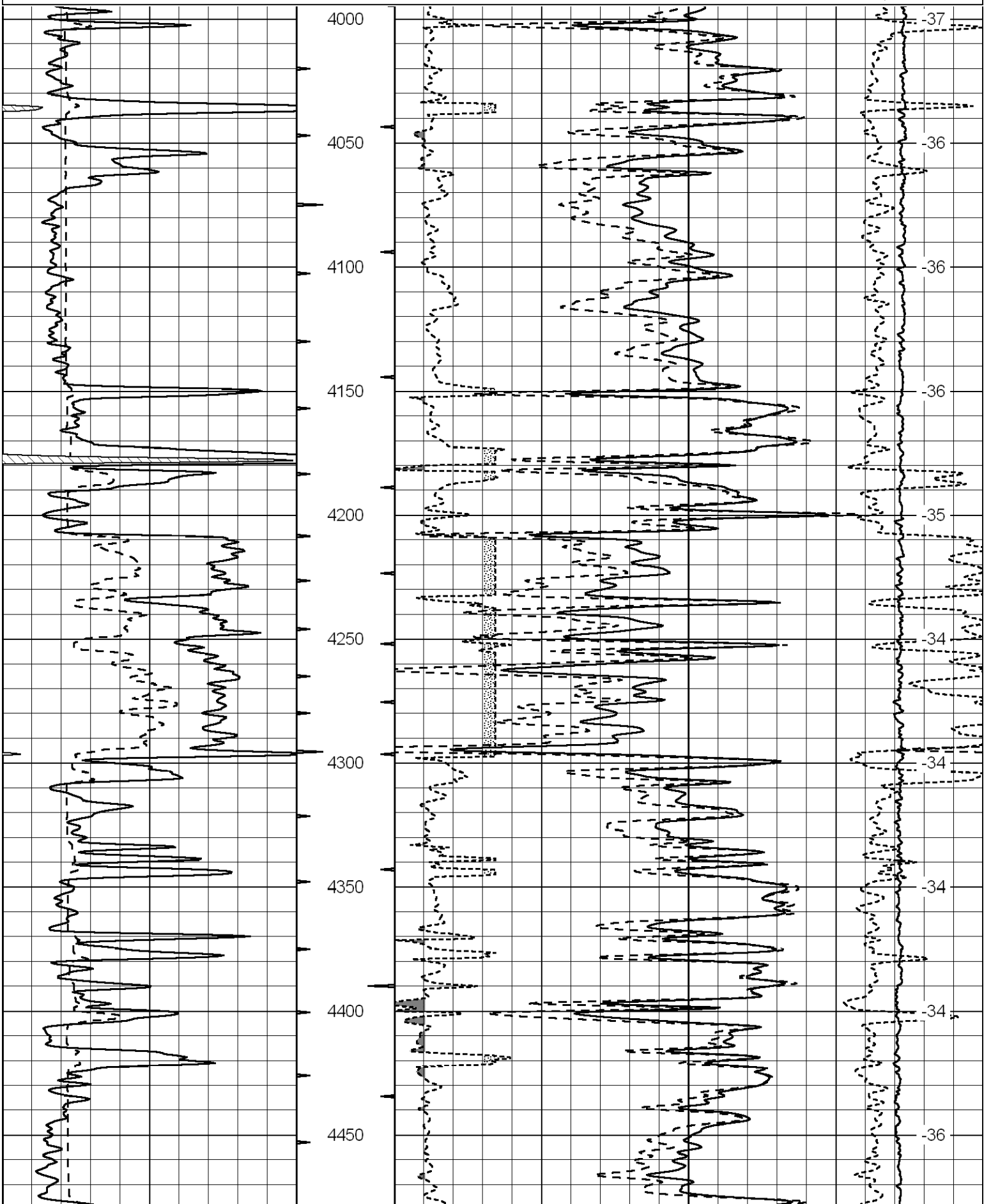
Thank you for using Log-Tech, Inc.
 (785) 625-3858

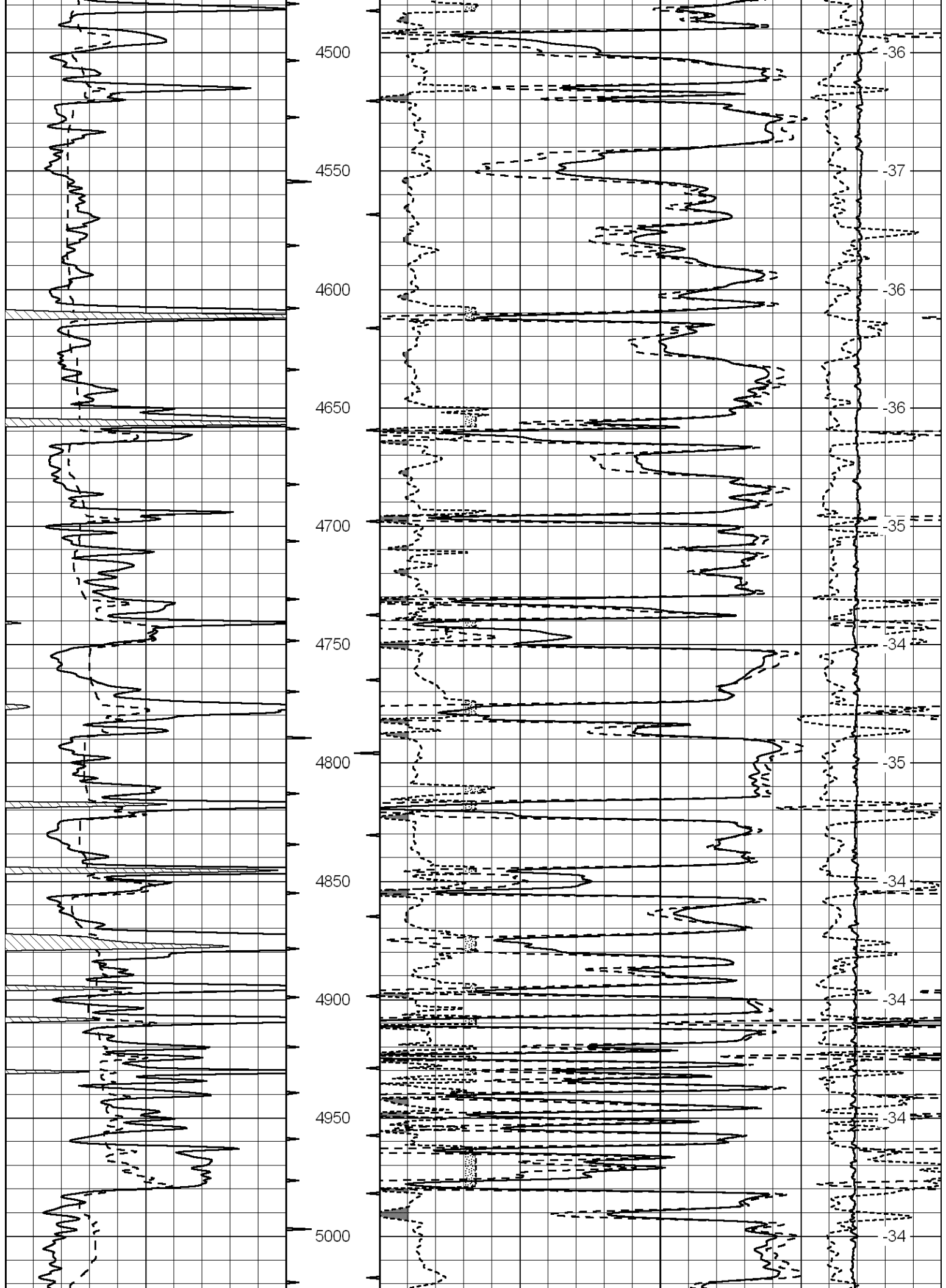
Ford, KS:
 2N to Ridge Rd., 3 1/2E to 129 Rd.,
 2N to Primus Rd., 1/4E, N into

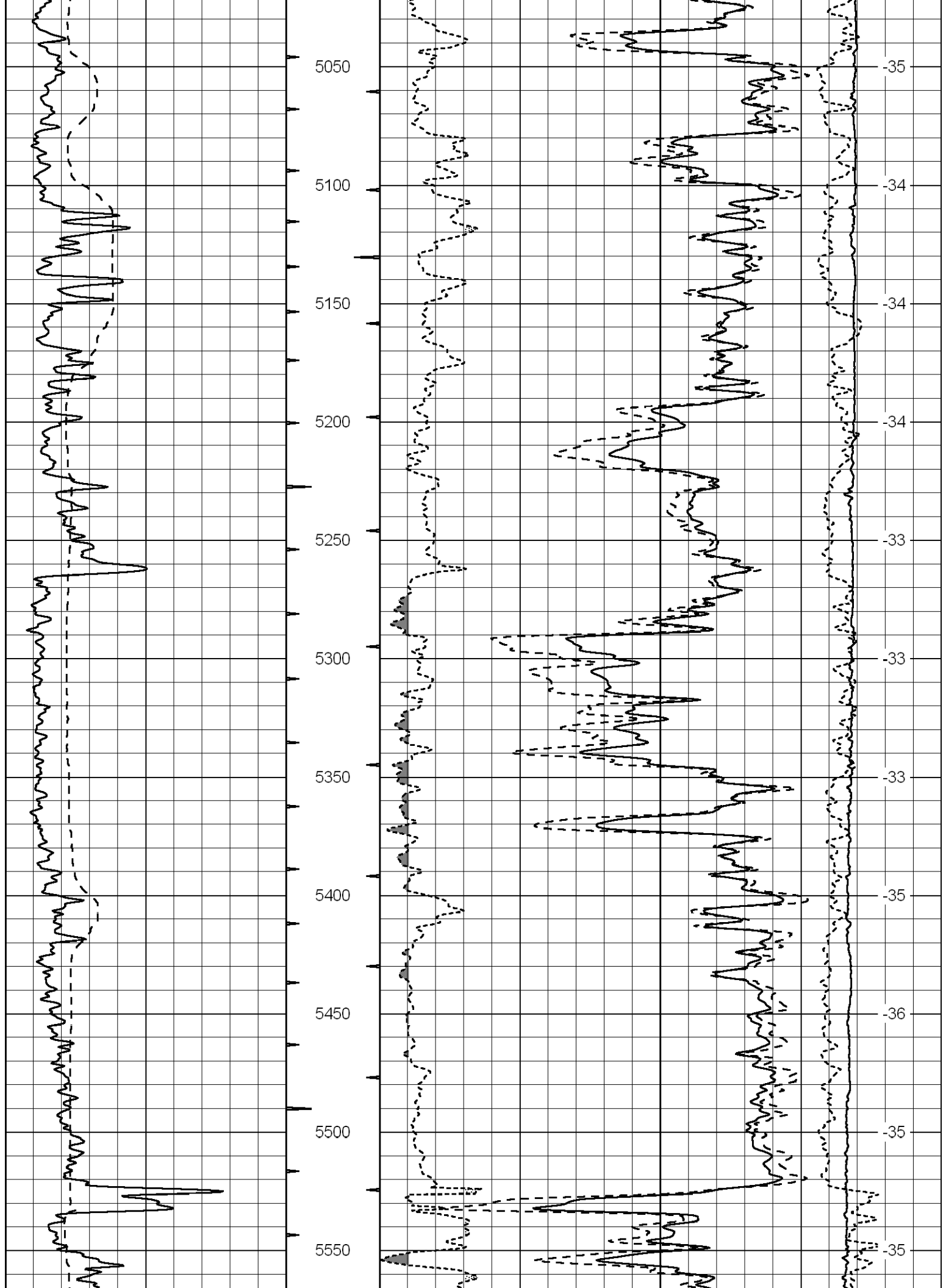
Database File: amwarhd.db
 Dataset Pathname: dil/amwmain
 Presentation Format: cdl
 Dataset Creation: Sat Oct 01 12:42:11 2011
 Charted by: Depth in Feet scaled 1:600

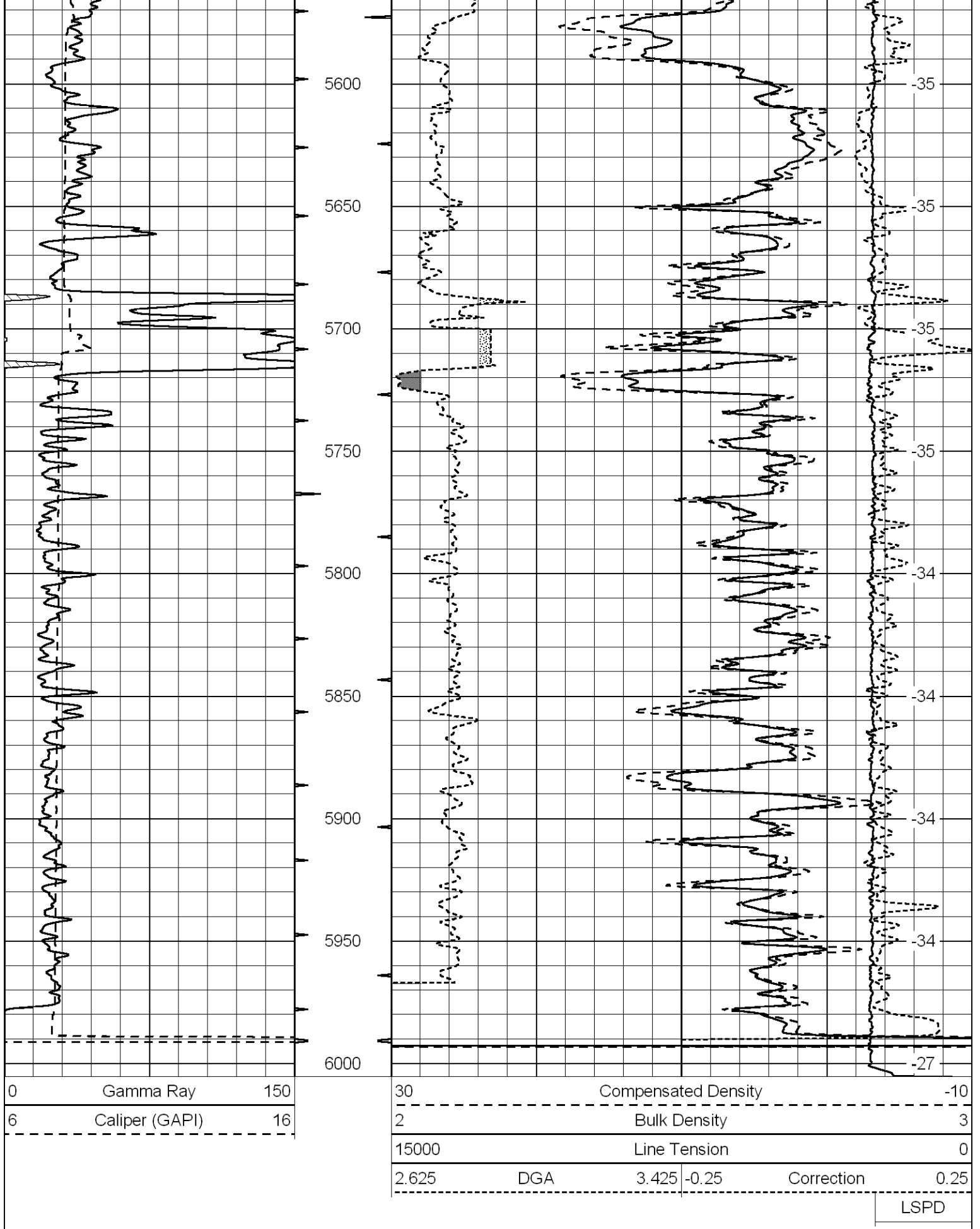
0	Gamma Ray	150
6	Caliper (GAPI)	16

30	Compensated Density		-10
2	Bulk Density		3
15000	Line Tension		0
2.625	DGA	3.425	-0.25
Correction			0.25
LSPD			









Database File: amwarhd.db
 Dataset Pathname: dil/amwmain
 Presentation Format: cndlspec

0	Gamma Ray	150
6	Caliper (GAPI)	16

30	CNLS			-10	
30	Compensated Density (2.71 ma)			-10	
2.625	DGA	3.425	-0.25	Correction	0.25
10000	Line Tension			0	

