



Dual Induction Log

DIGITAL LOG (785) 625-3858

API No.	15-057-20750-00-00	
Company	American Warrior, Inc.	
Well	Schomaker "C" #3	
Field	Konda Southeast	
County	Ford	State
Location	NE SE NW SW 568' FSL / 1134' FWL	
Sec: 13	Twp: 27S	Rge: 22W
Other Services	CNL / CDL MEL	

Permanent Datum	Ground Level	Elevation 2406
Log Measured From	Kelly Bushing	9 Ft. Above Perm. Datum
Drilling Measured From	Kelly Bushing	K.B. 2417 D.F. 2406 G.L. 2406
Date	10/1/2011	
Run Number	One	
Depth Driller	6000	
Depth Logger	6000	
Bottom Logged Interval	5999	
Top Log Interval	400	
Casing Driller	8.625 @ 430	
Casing Logger	430	
Bit Size	7.875	
Type Fluid in Hole	Chemical	
Salinity, ppm CL	3800	
Density / Viscosity	9.6	48
pH / Fluid Loss	10.0	9.6
Source of Sample	Flowline	
Rm @ Meas. Temp	1.50 @ 80	
Rmf @ Meas. Temp	1.13 @ 80	
Rmc @ Meas. Temp	2.03 @ 80	
Source of Rmf / Rmc	Charts	
Rm @ BHT	0.88 @ 136	
Operating Rig Time	6 Hours	
Max Rec. Temp. F	136	
Equipment Number	15	
Location	Hays	
Recorded By	R. Barnhart	
Witnessed By	Harley Savles	

<<< Fold Here >>>

All interpretations are opinions based on inferences from electrical or other measurements and we cannot and do not guarantee the accuracy or correctness of any interpretation, and we shall not, except in the case of gross or willful negligence on our part, be liable or responsible for any loss, costs, damages, or expenses incurred or sustained by anyone resulting from any interpretation made by any of our officers, agents or employees. These interpretations are also subject to our general terms and conditions set out in our current Price Schedule.

Comments

Thank you for using Log-Tech, Inc.
 (785) 625-3858

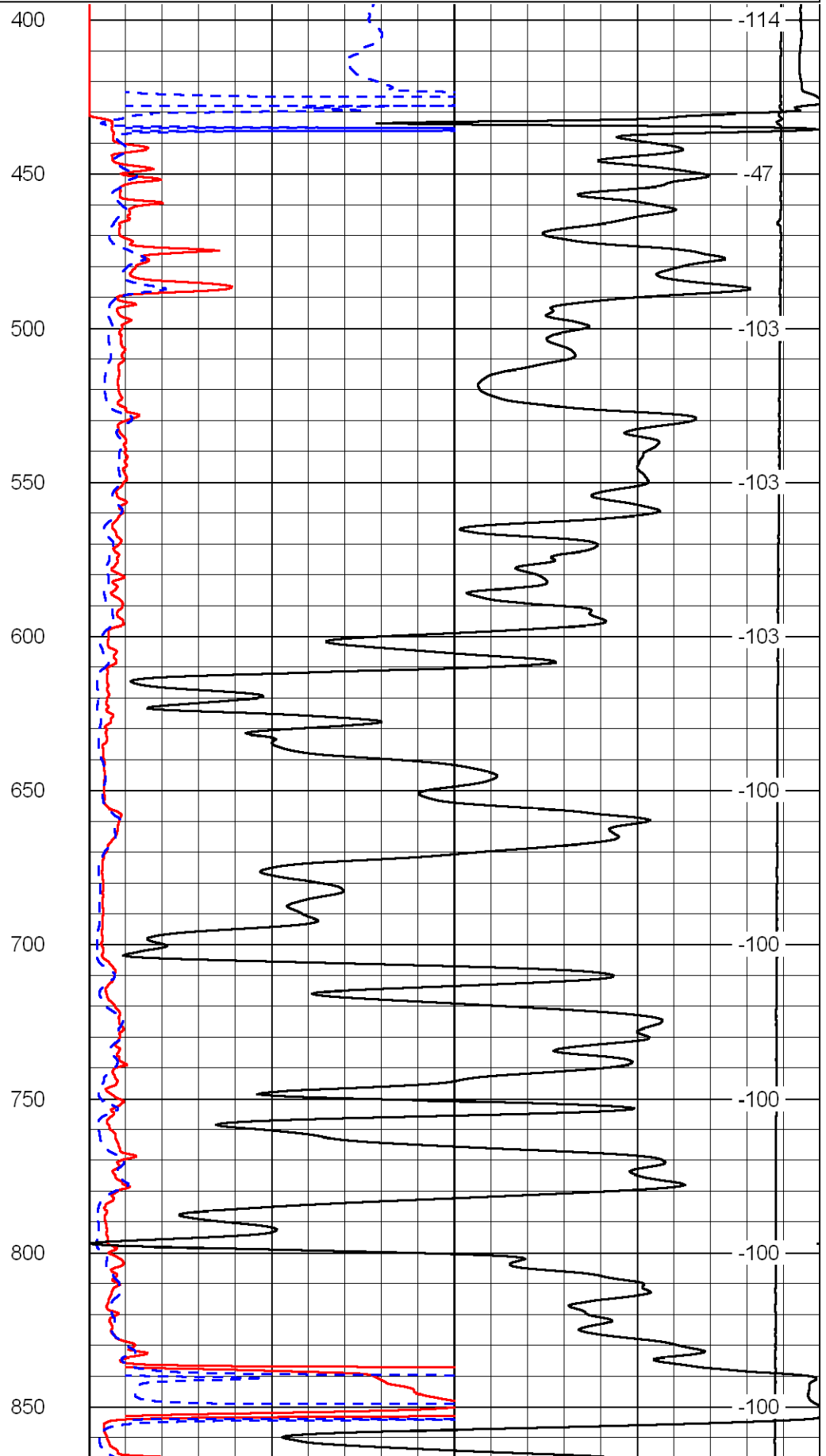
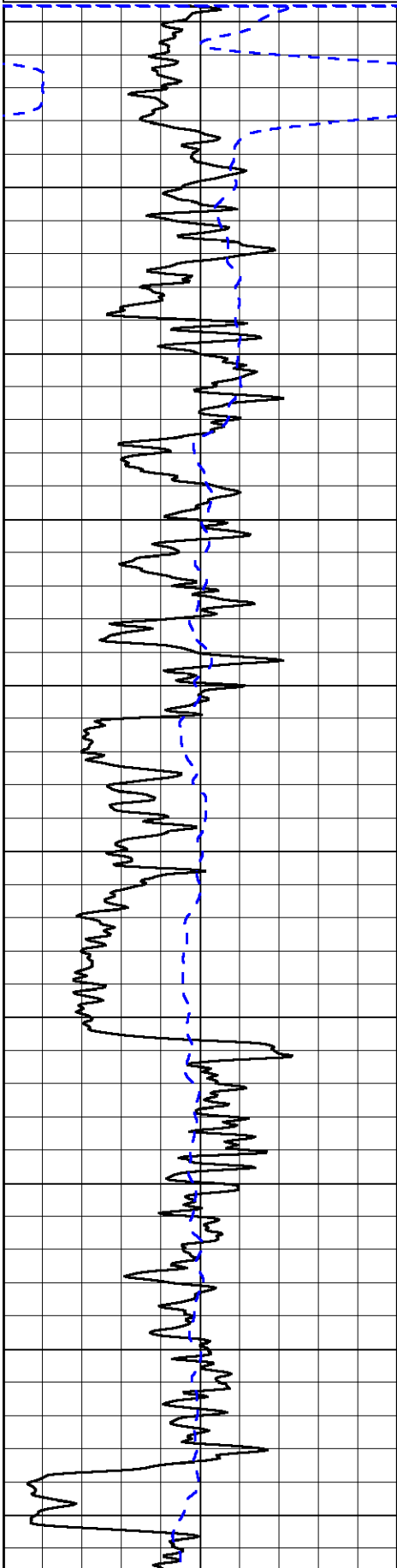
Ford, KS:
 2N to Ridge Rd., 3 1/2E to 129 Rd.,
 2N to Primus Rd., 1/4E, N into

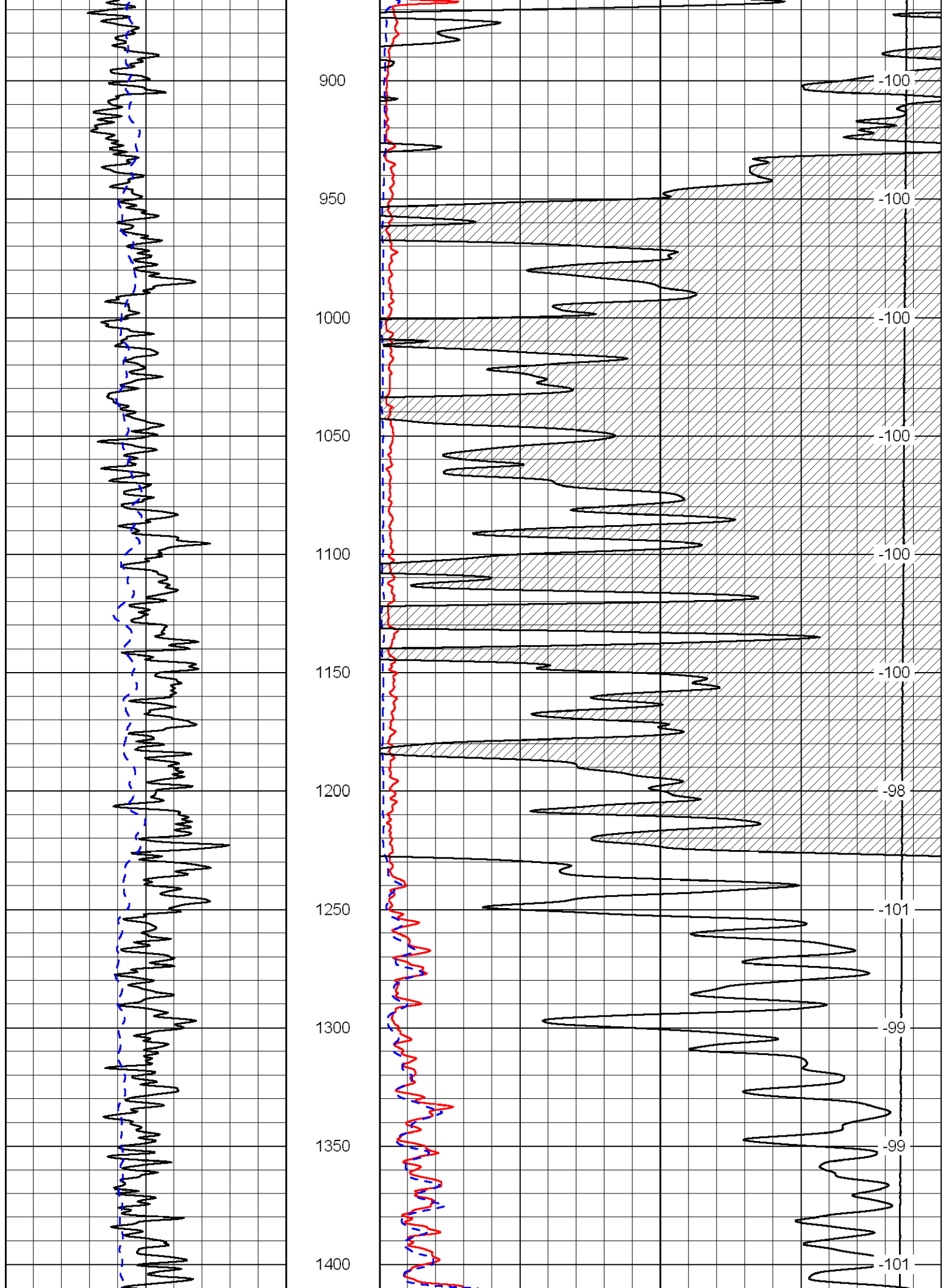
Database File: amwarhd.db
 Dataset Pathname: dil/amwmain
 Presentation Format: dil2in
 Dataset Creation: Sat Oct 01 12:42:11 2011
 Charted by: Depth in Feet scaled 1:600

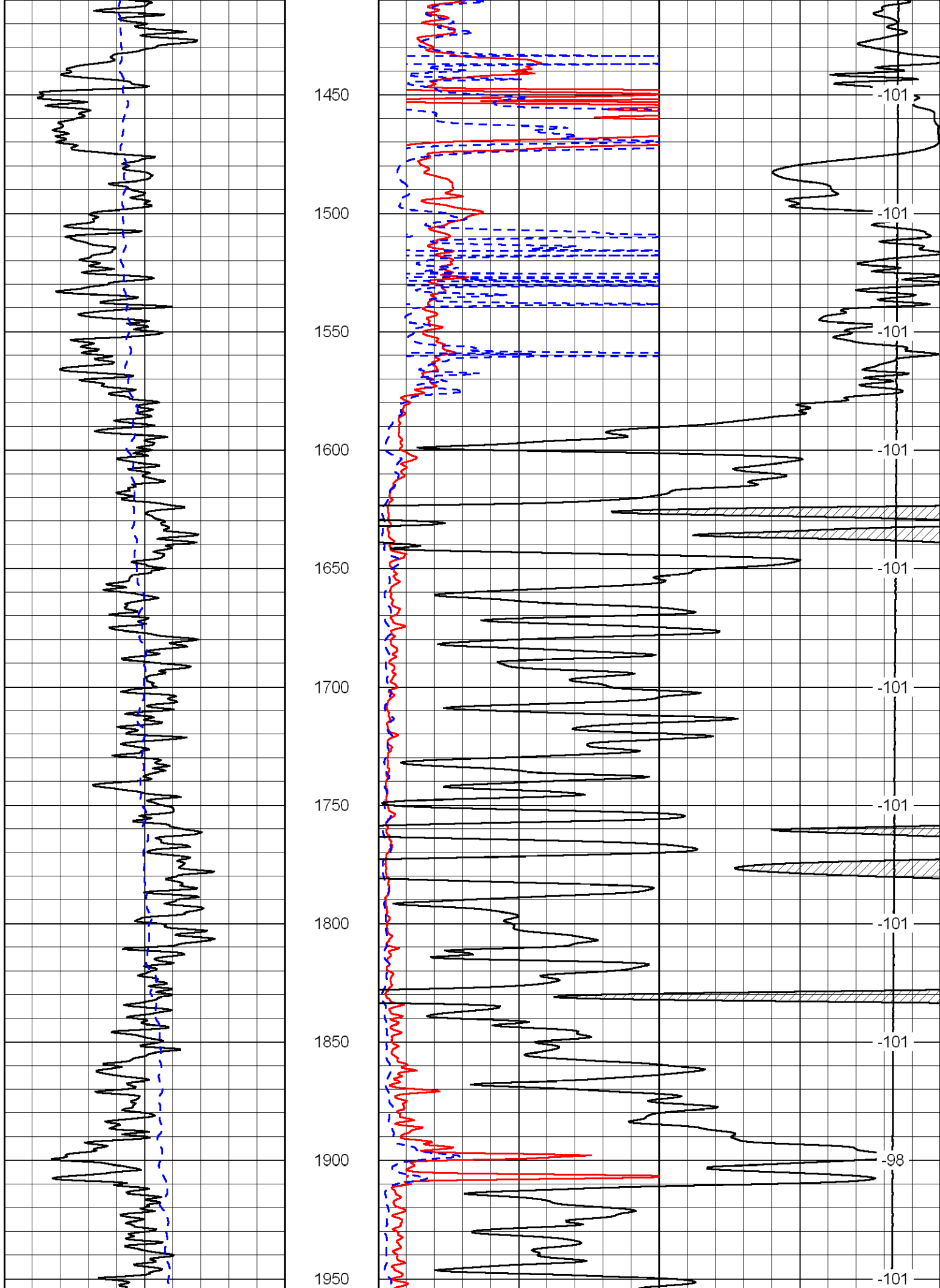
0 Gamma Ray 150
-200 SP 0

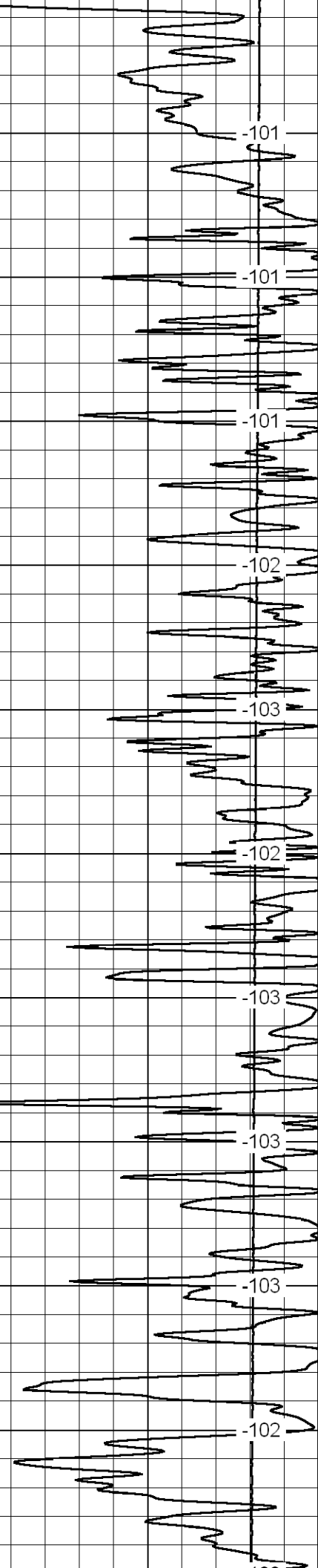
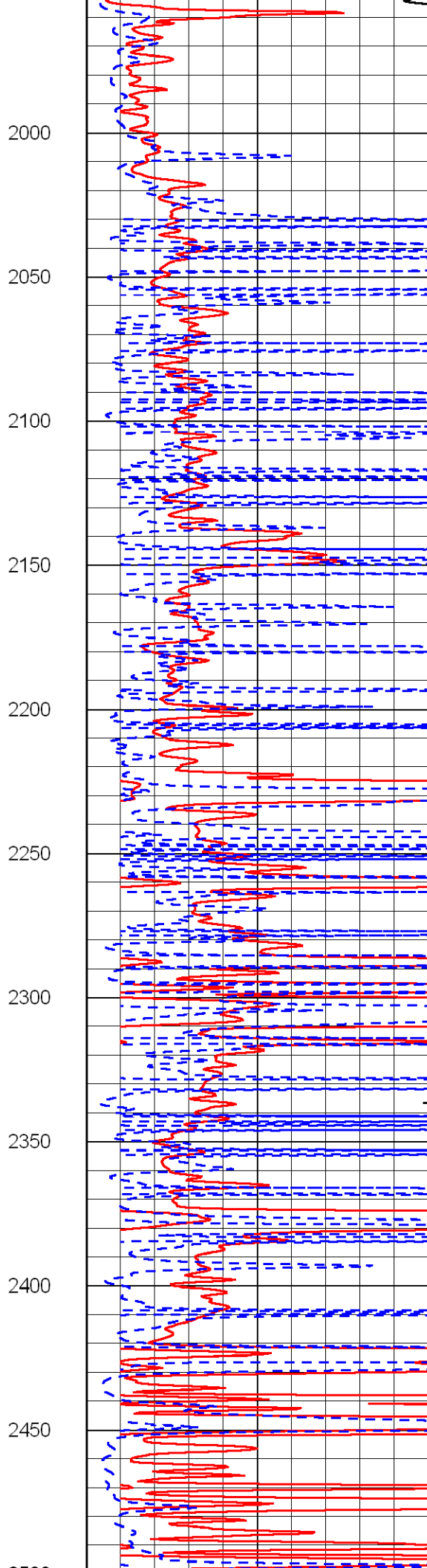
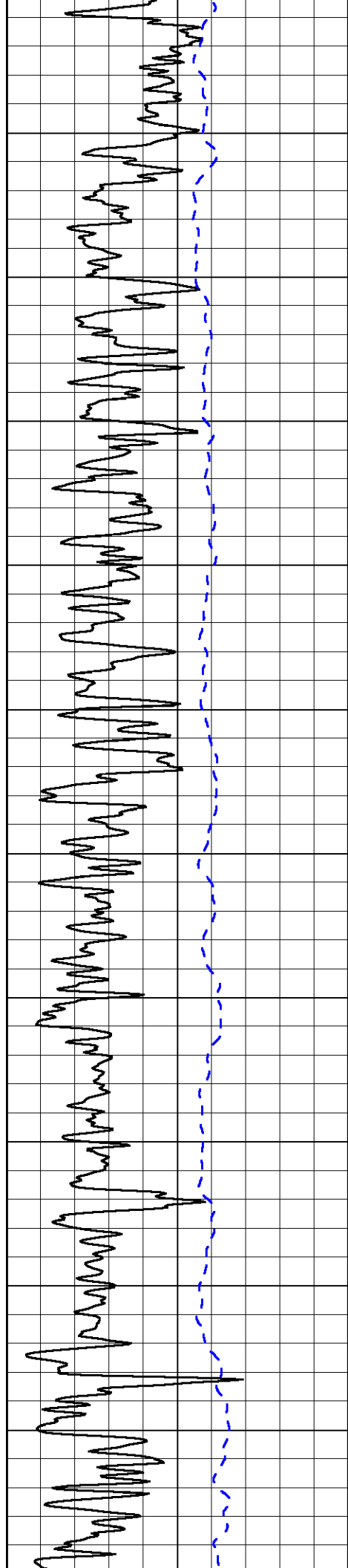
0 Shallow Resistivity 50
0 Deep Resistivity 50
1000 Conductivity 0
15000 Line Tension 0
50 Shallow Resistivity 500
50 Deep Resistivity 500

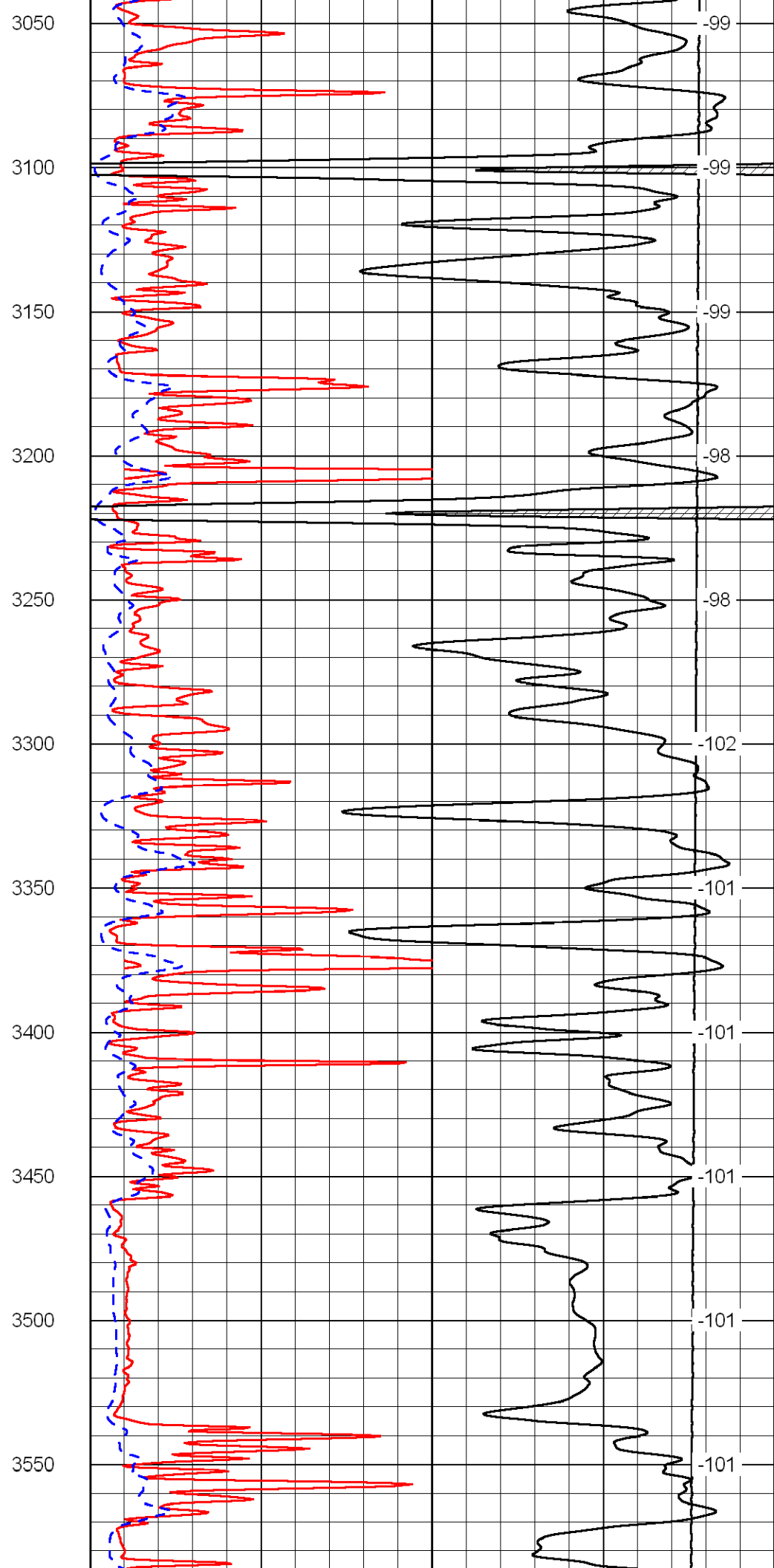
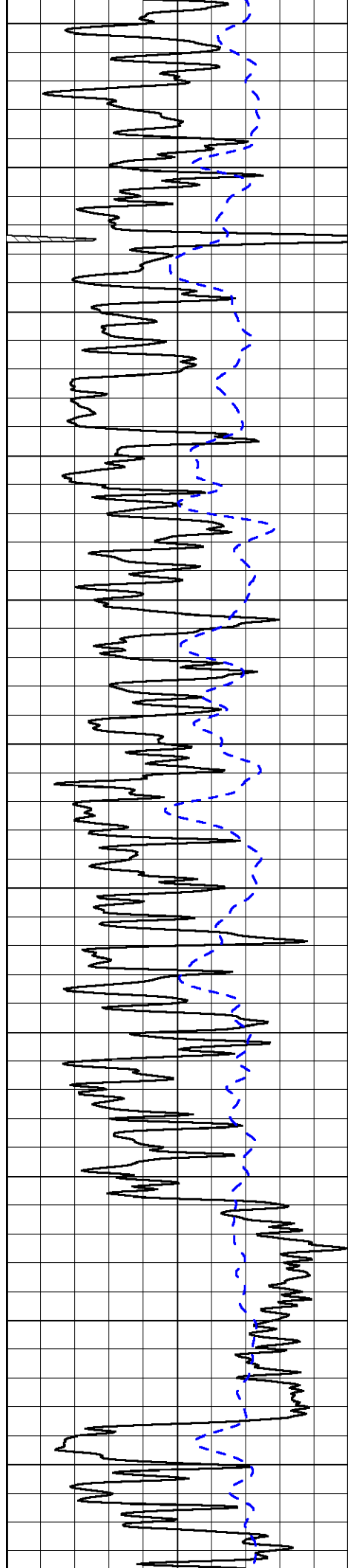
LSPD

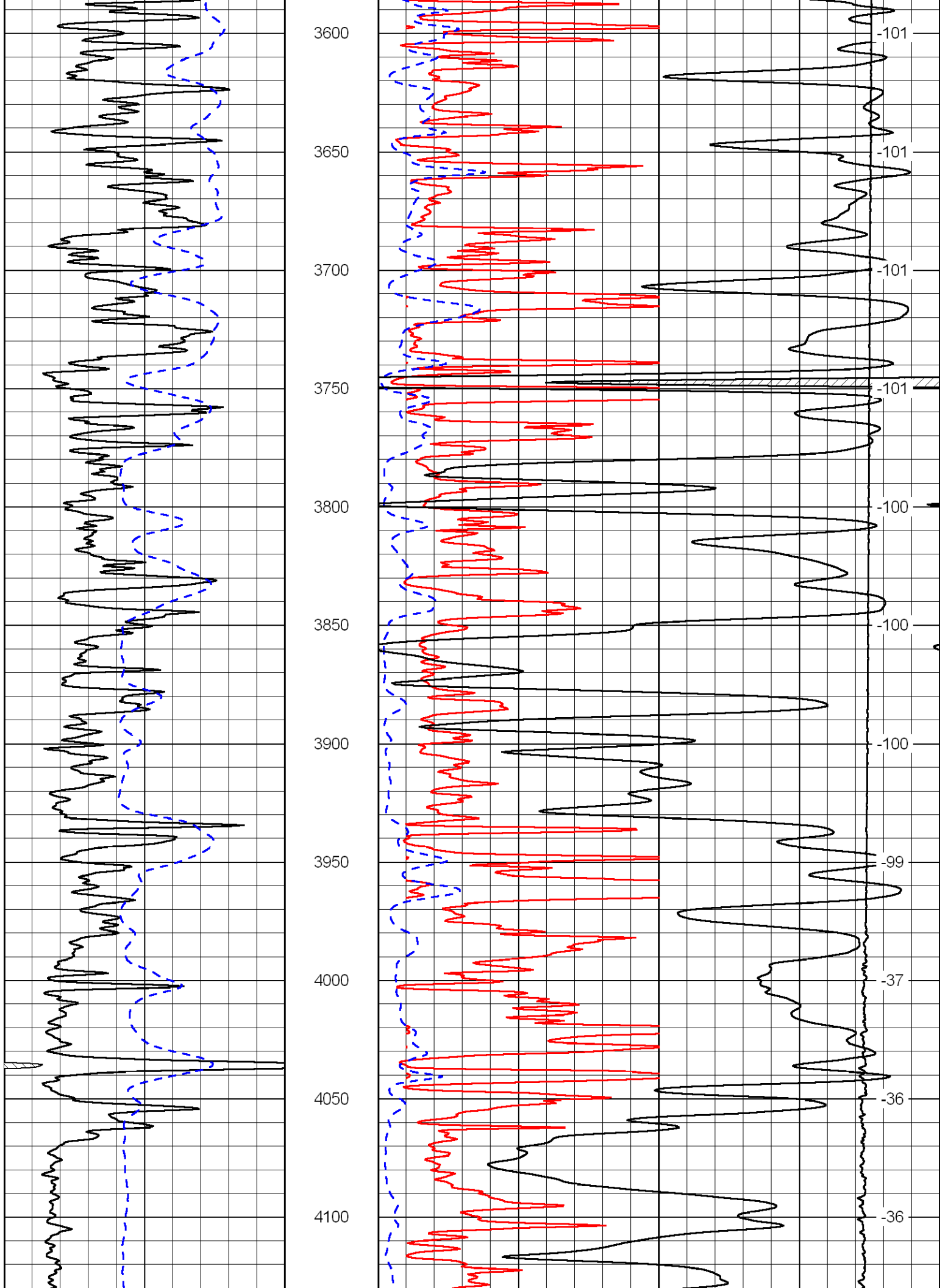


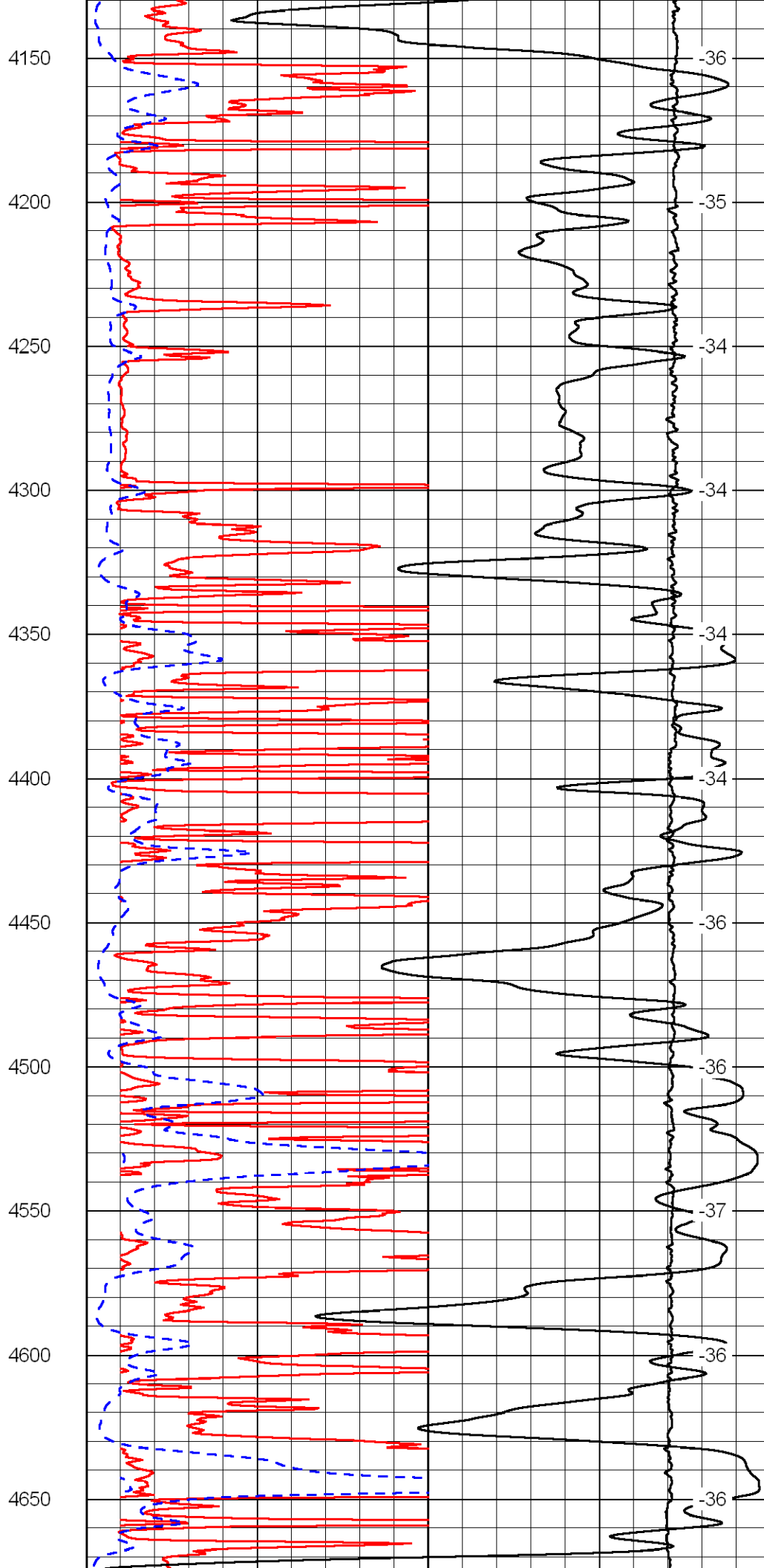
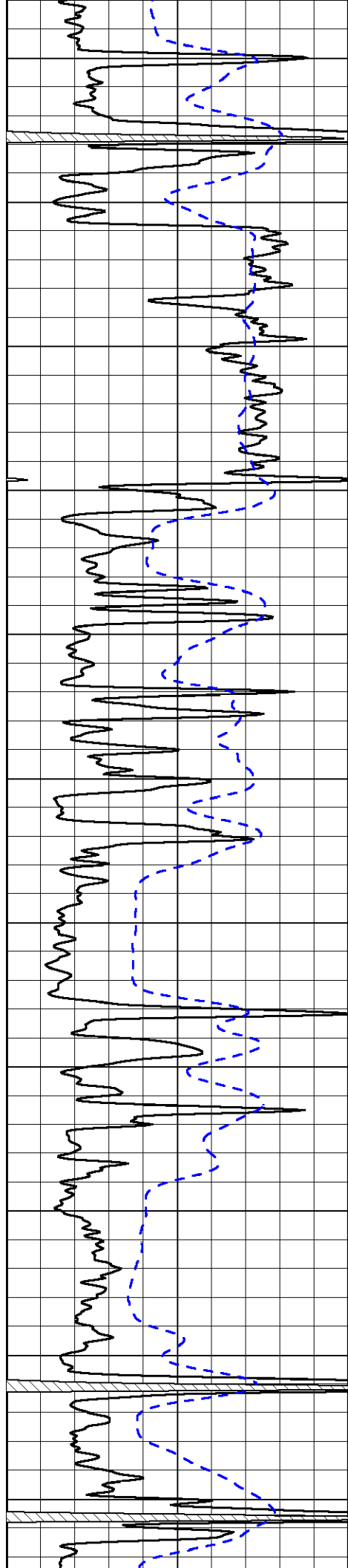


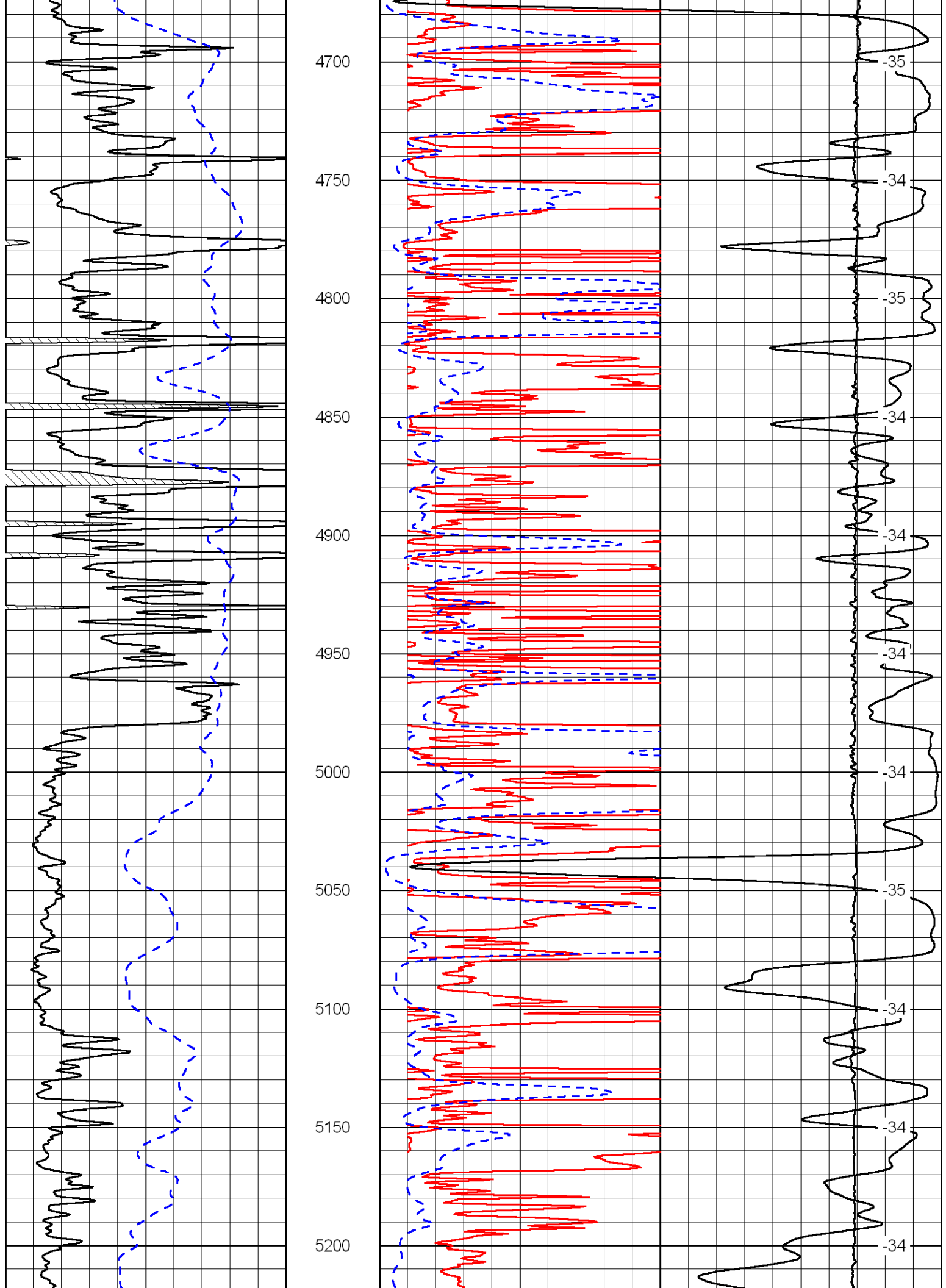


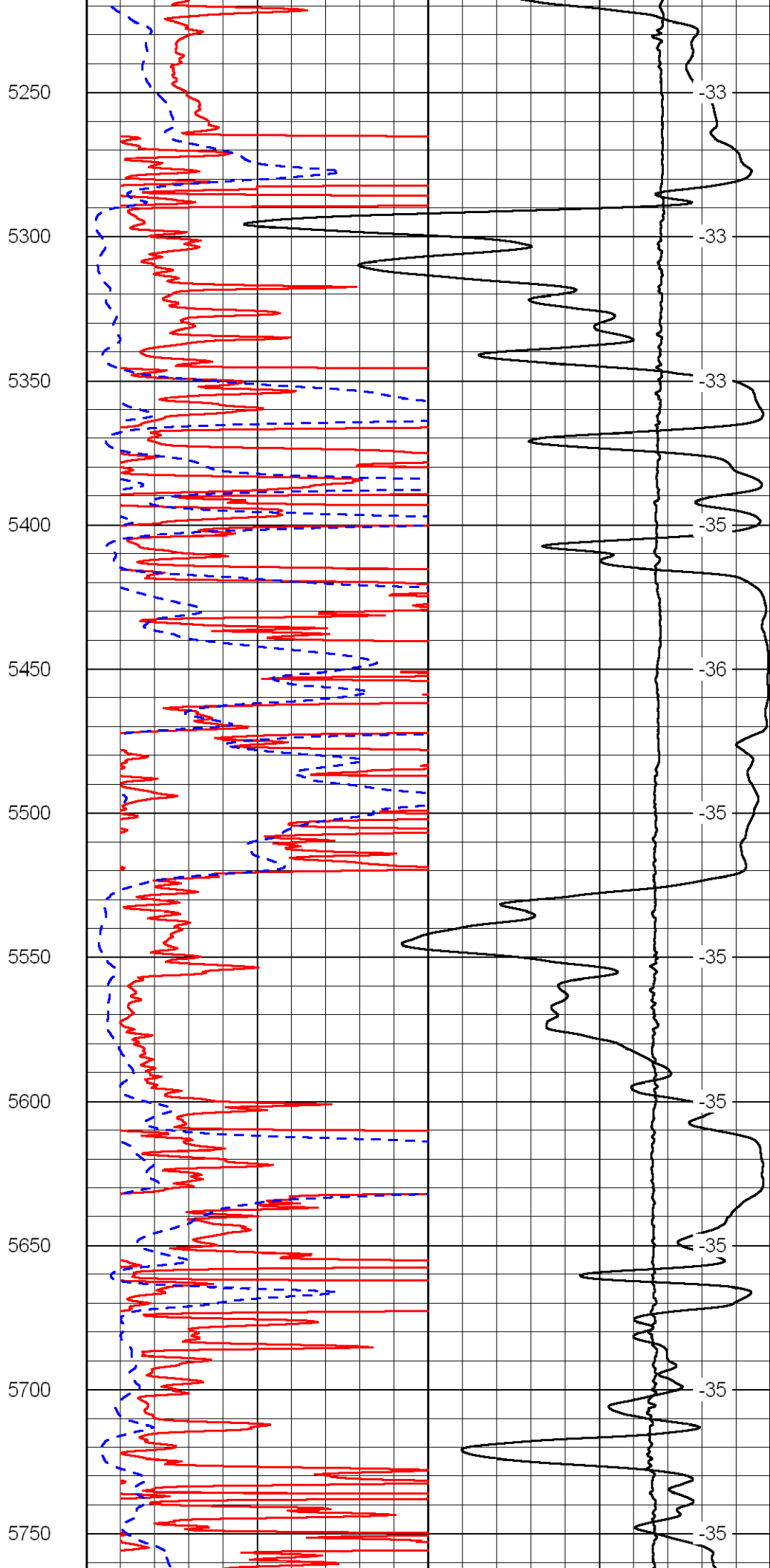
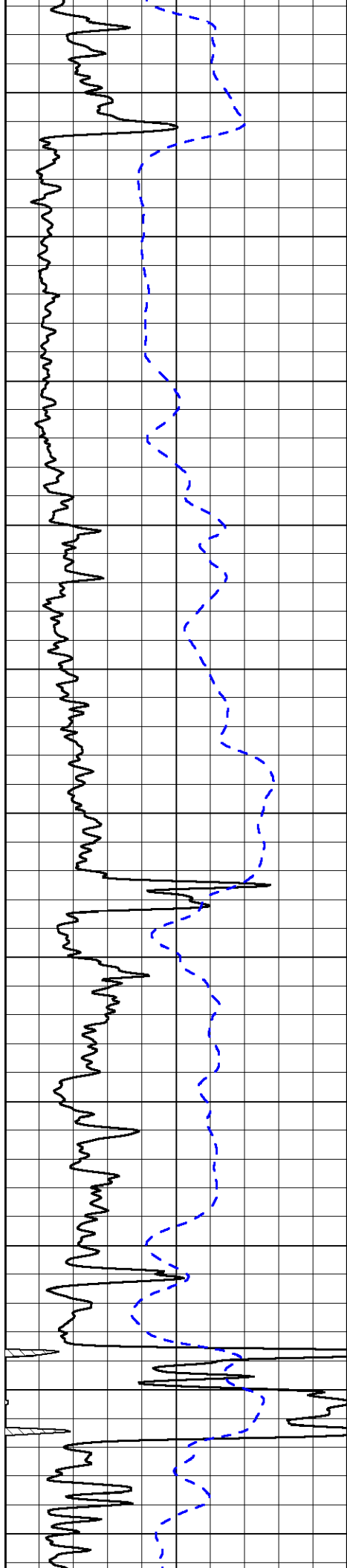


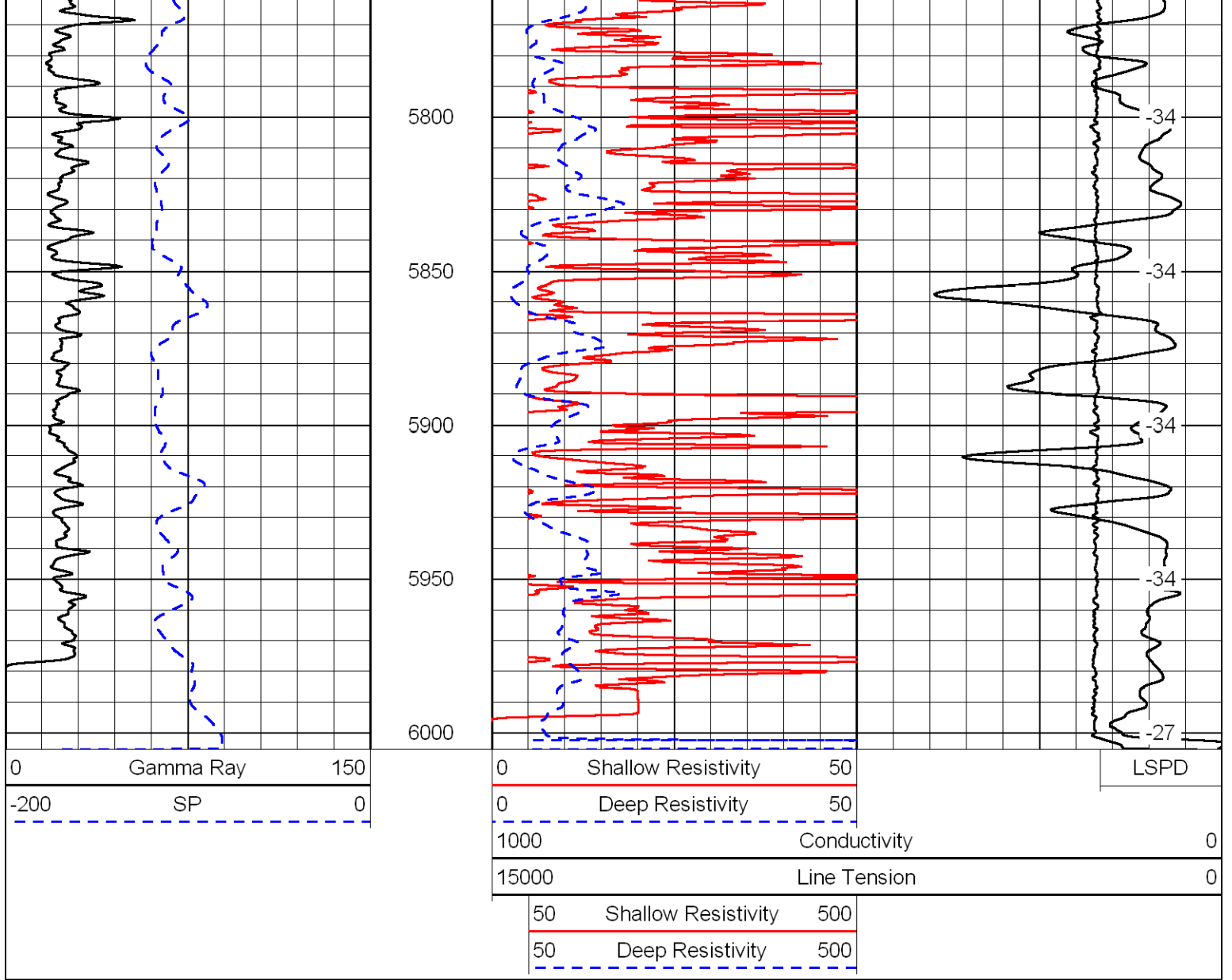




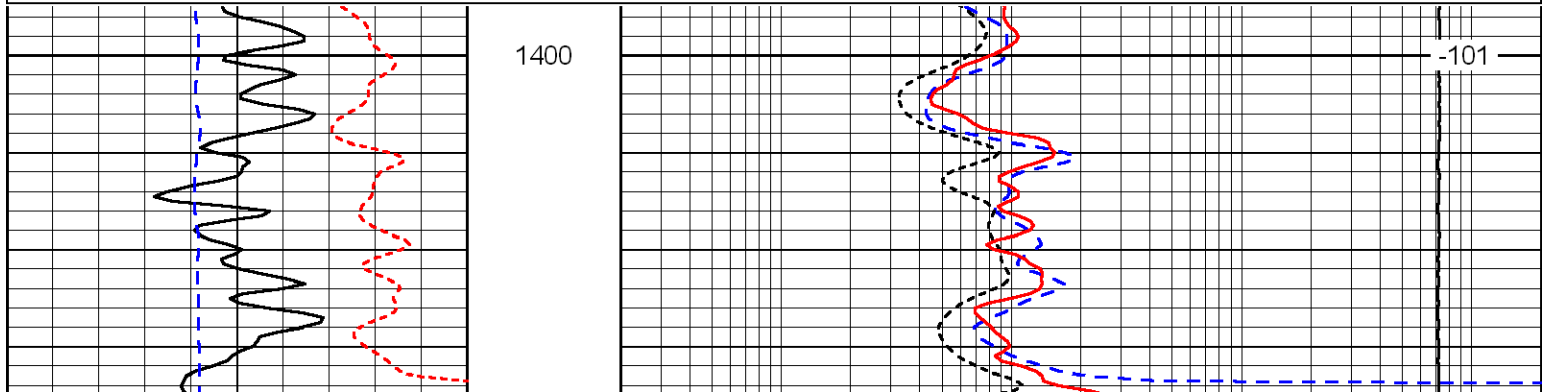
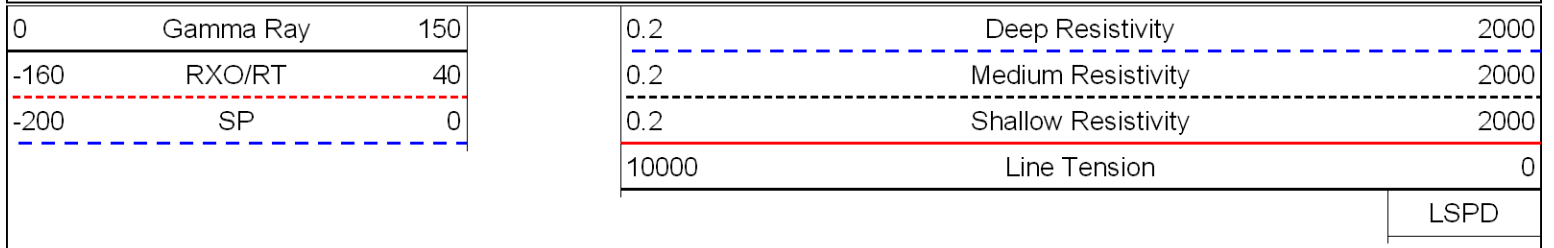


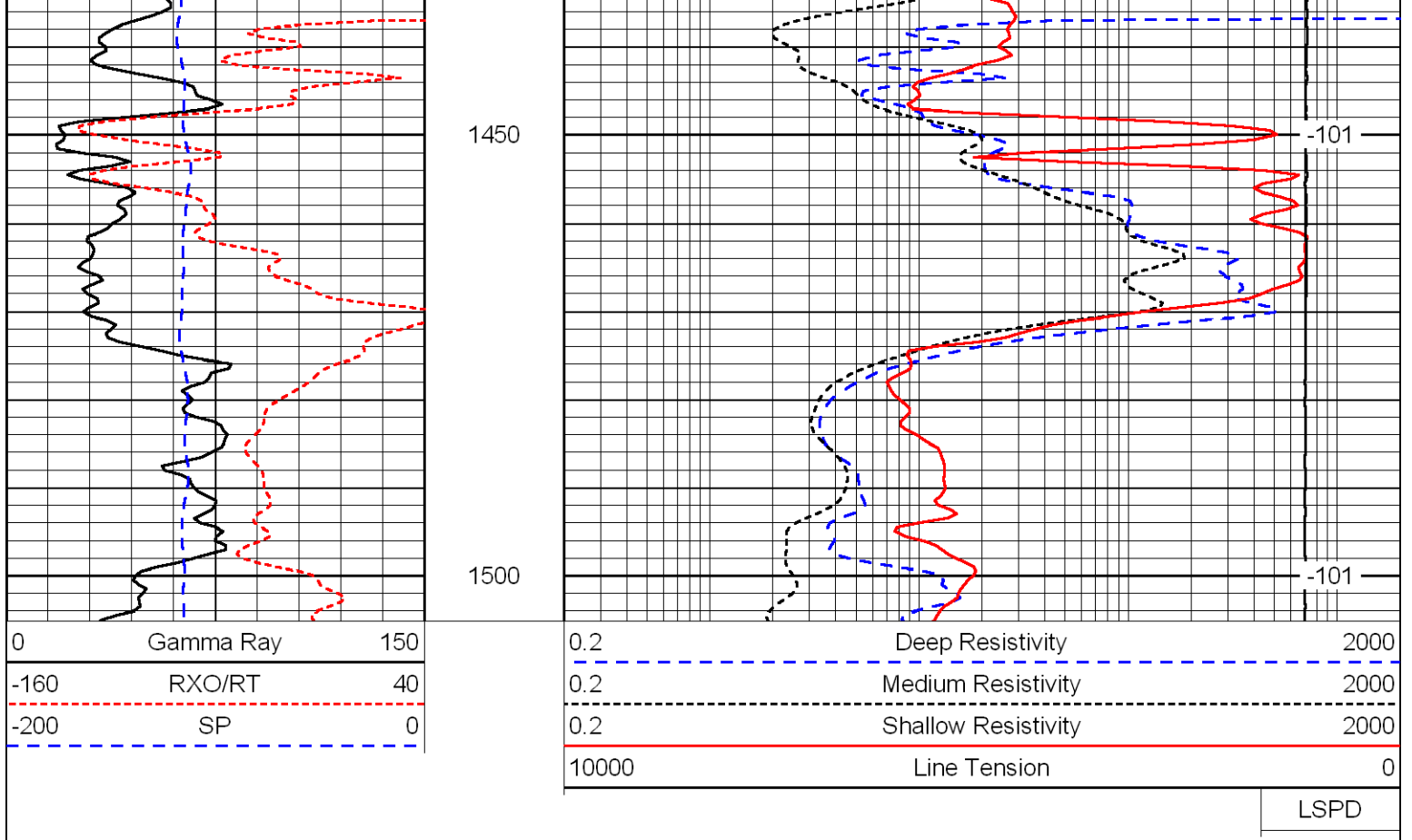




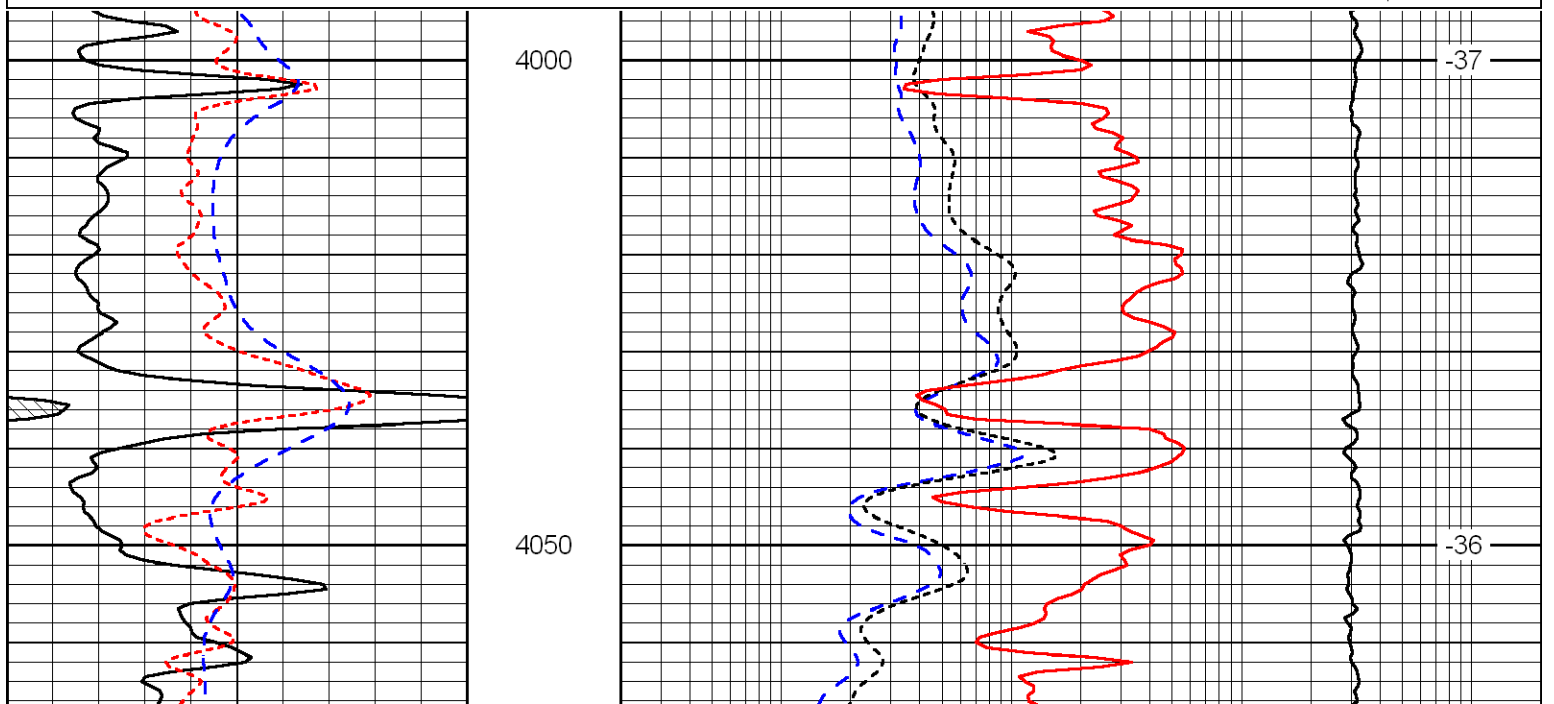
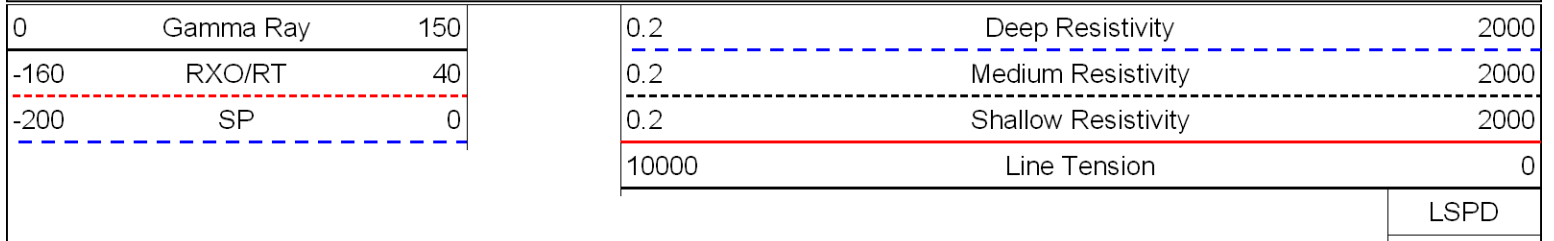


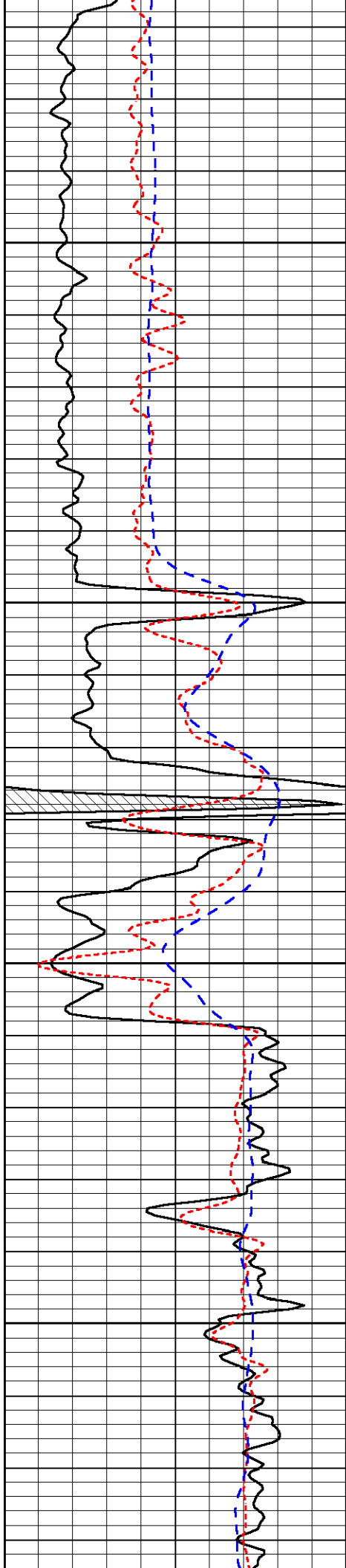
Database File: amwarhd.db
 Dataset Pathname: dil/amwmain
 Presentation Format: dil
 Dataset Creation: Sat Oct 01 12:42:11 2011
 Charted by: Depth in Feet scaled 1:240





Database File: amwarhd.db
 Dataset Pathname: dil/amwmain
 Presentation Format: dil
 Dataset Creation: Sat Oct 01 12:42:11 2011
 Charted by: Depth in Feet scaled 1:240



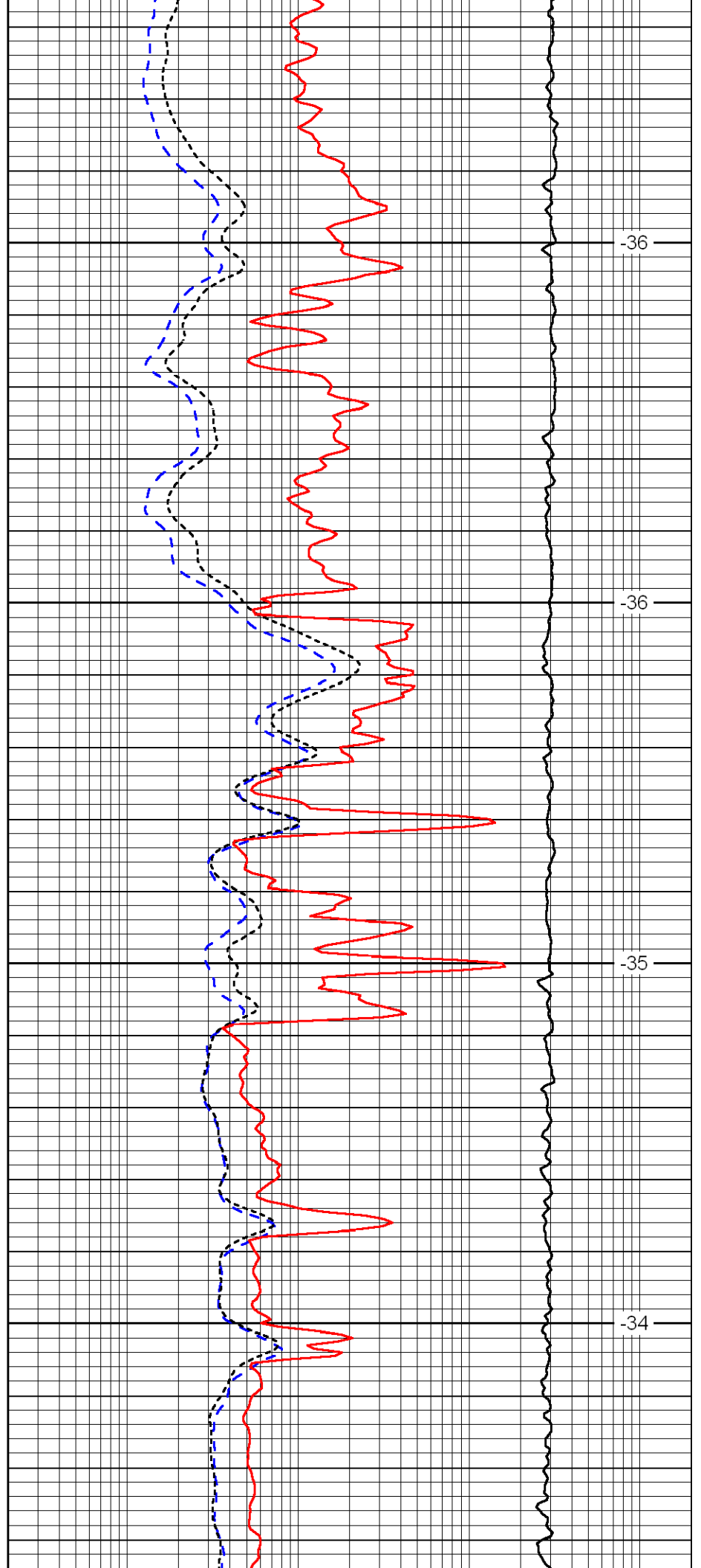


4100

4150

4200

4250

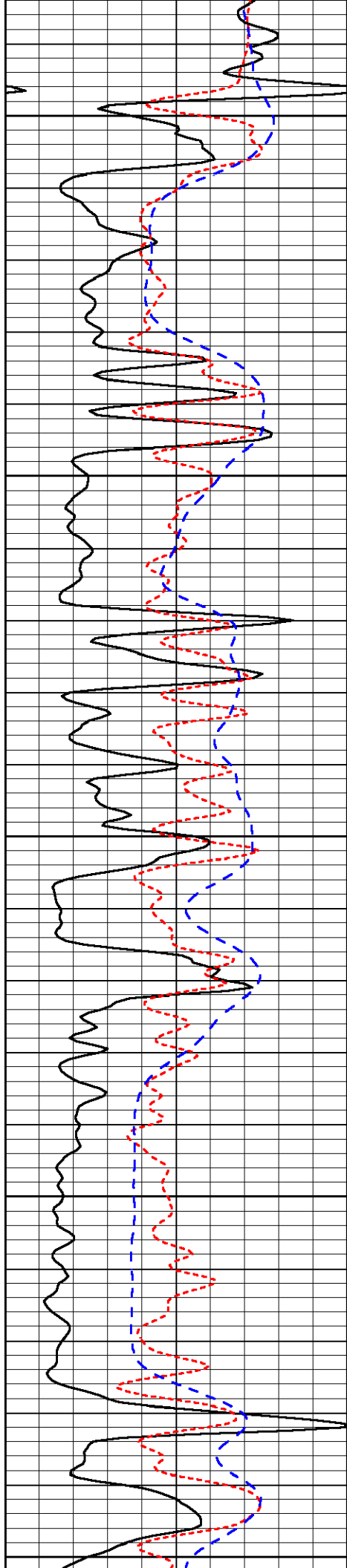


-36

-36

-35

-34



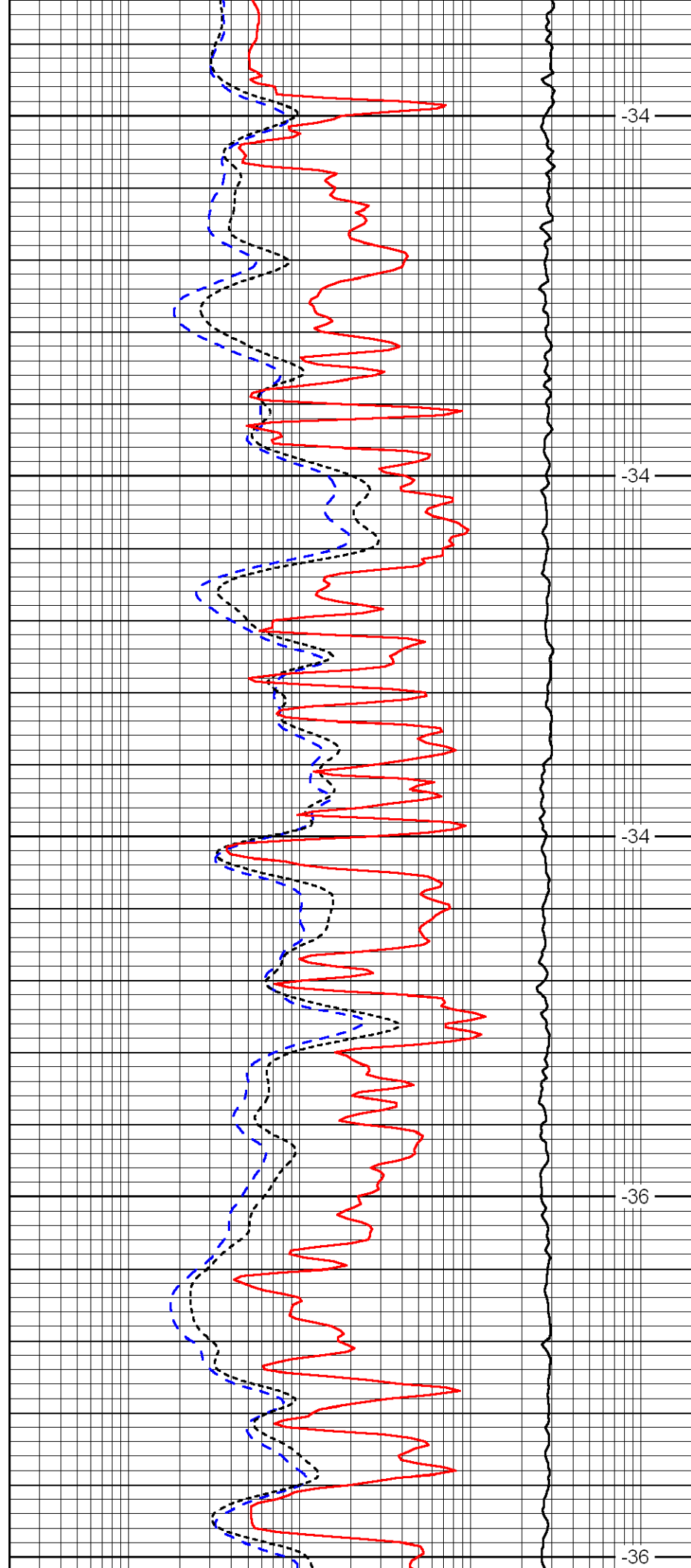
4300

4350

4400

4450

4500



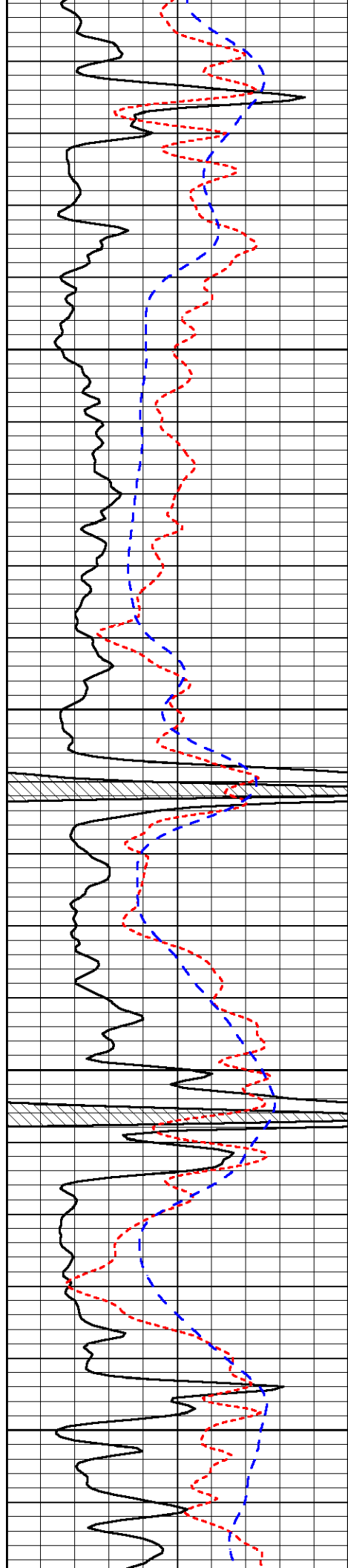
-34

-34

-34

-36

-36

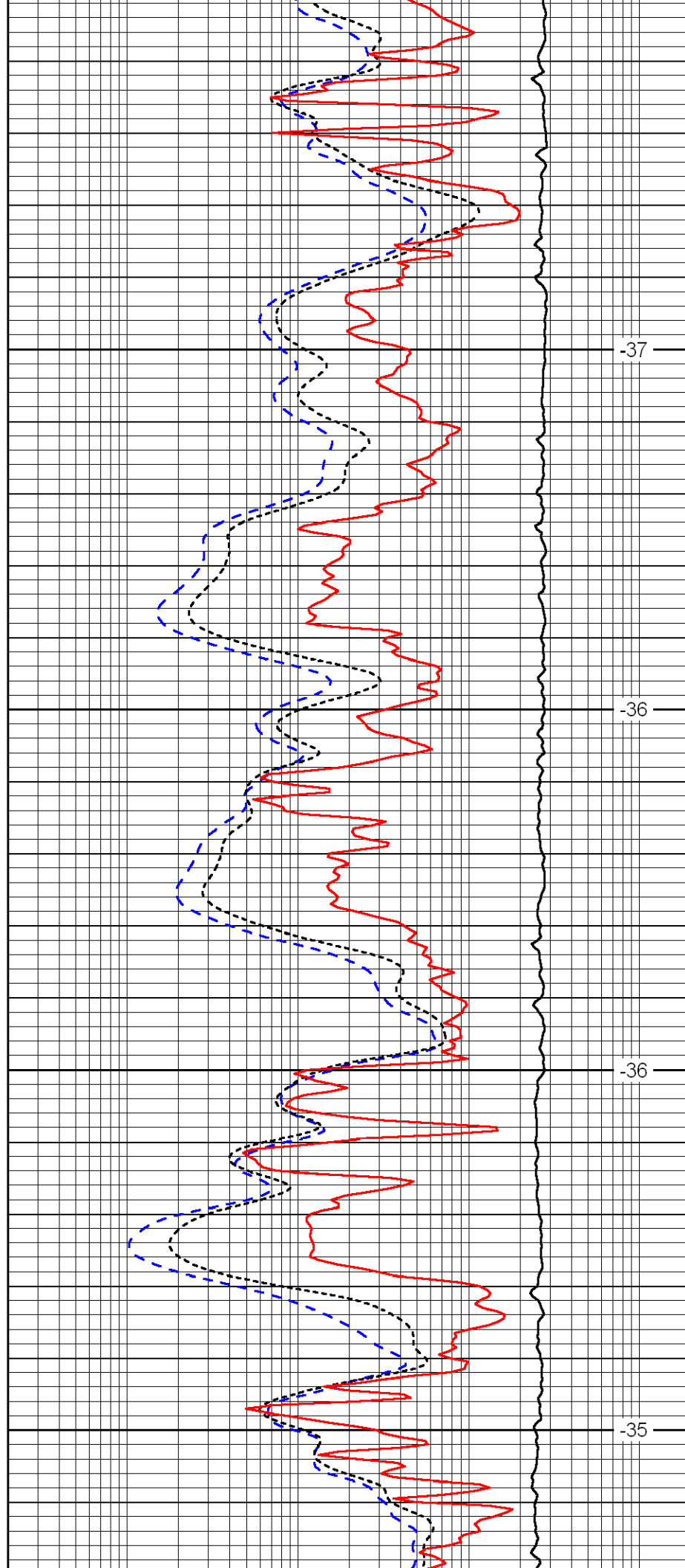


4550

4600

4650

4700

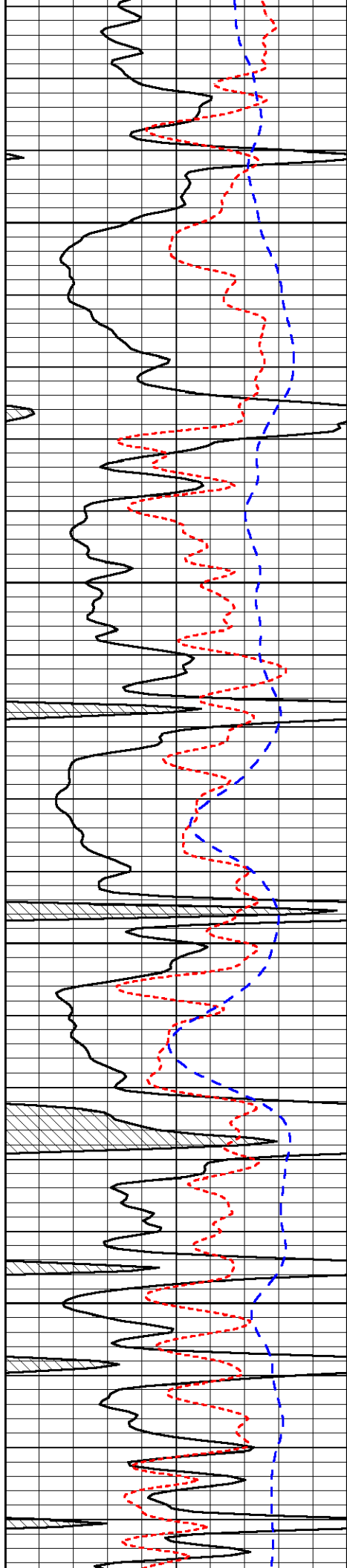


-37

-36

-36

-35

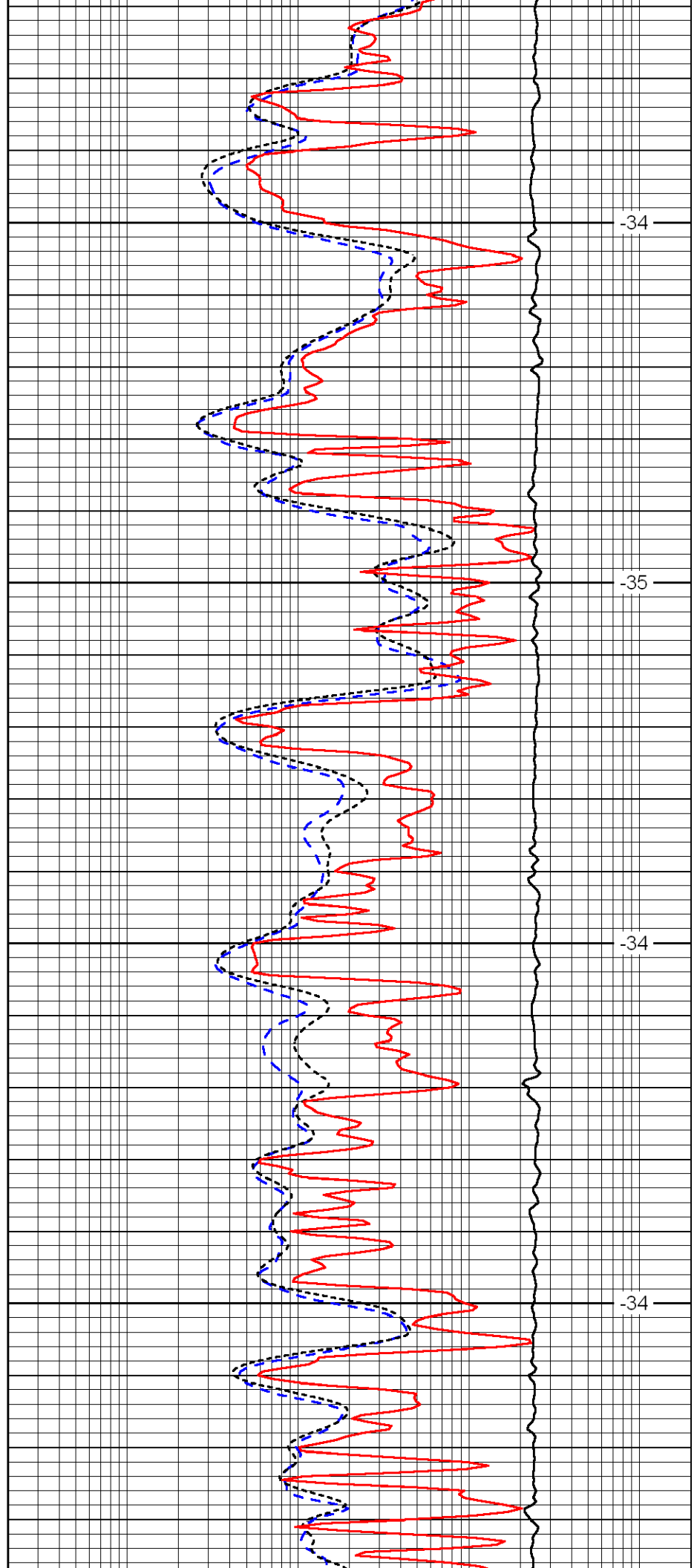


4750

4800

4850

4900

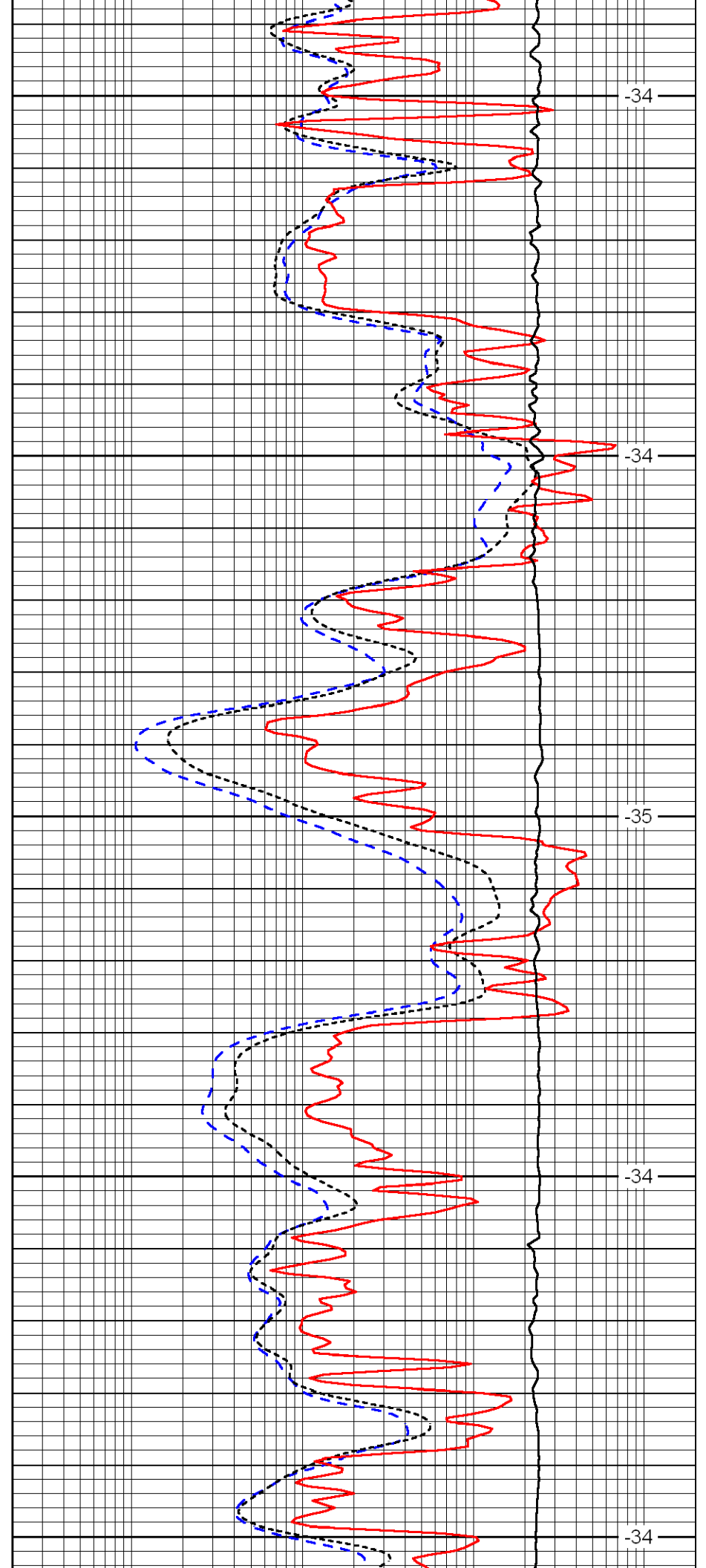
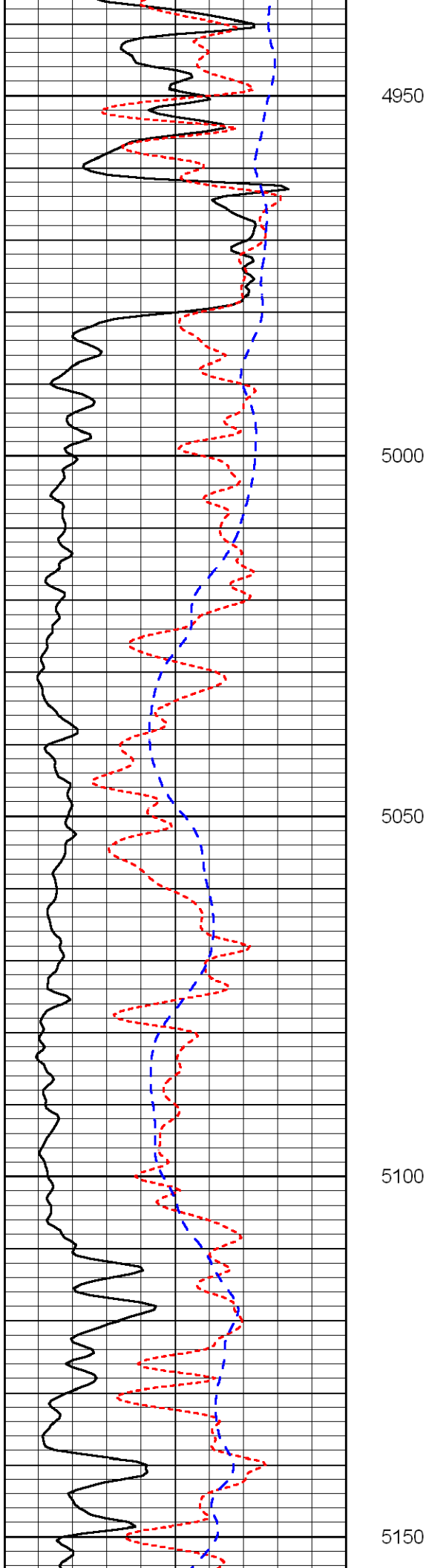


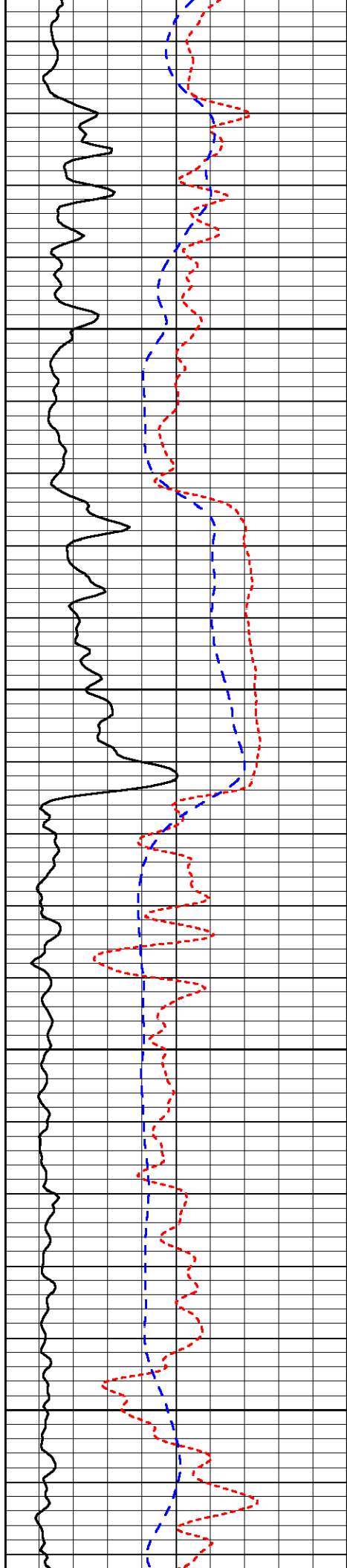
-34

-35

-34

-34



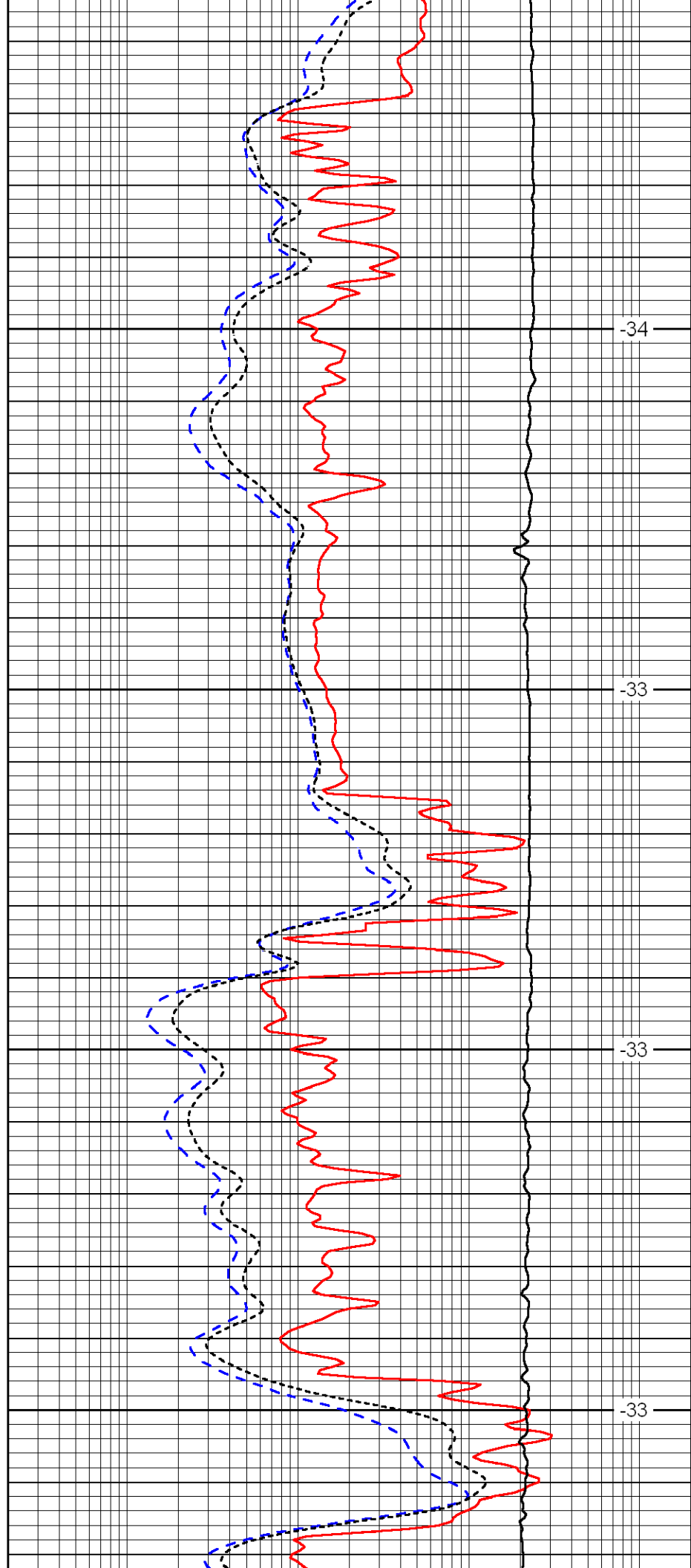


5200

5250

5300

5350

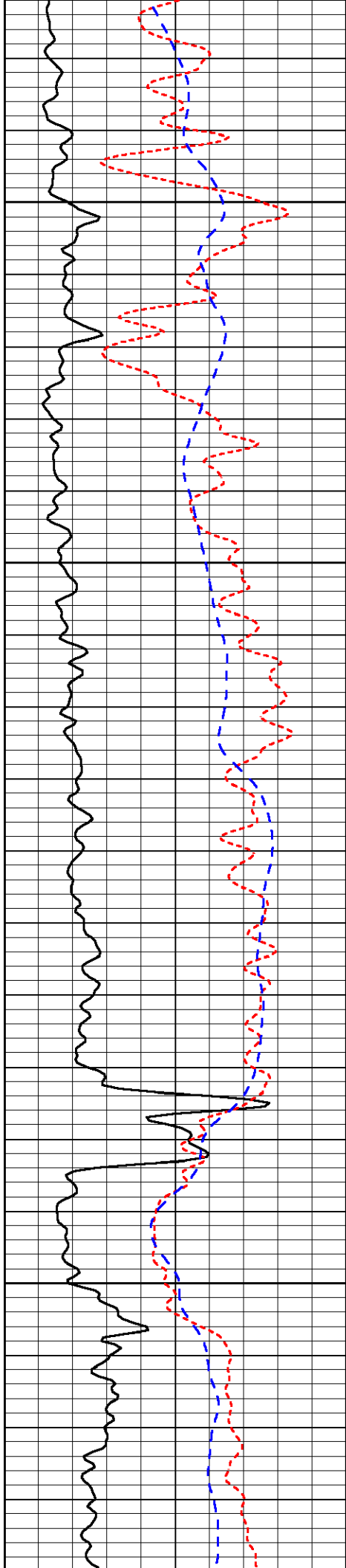


-34

-33

-33

-33

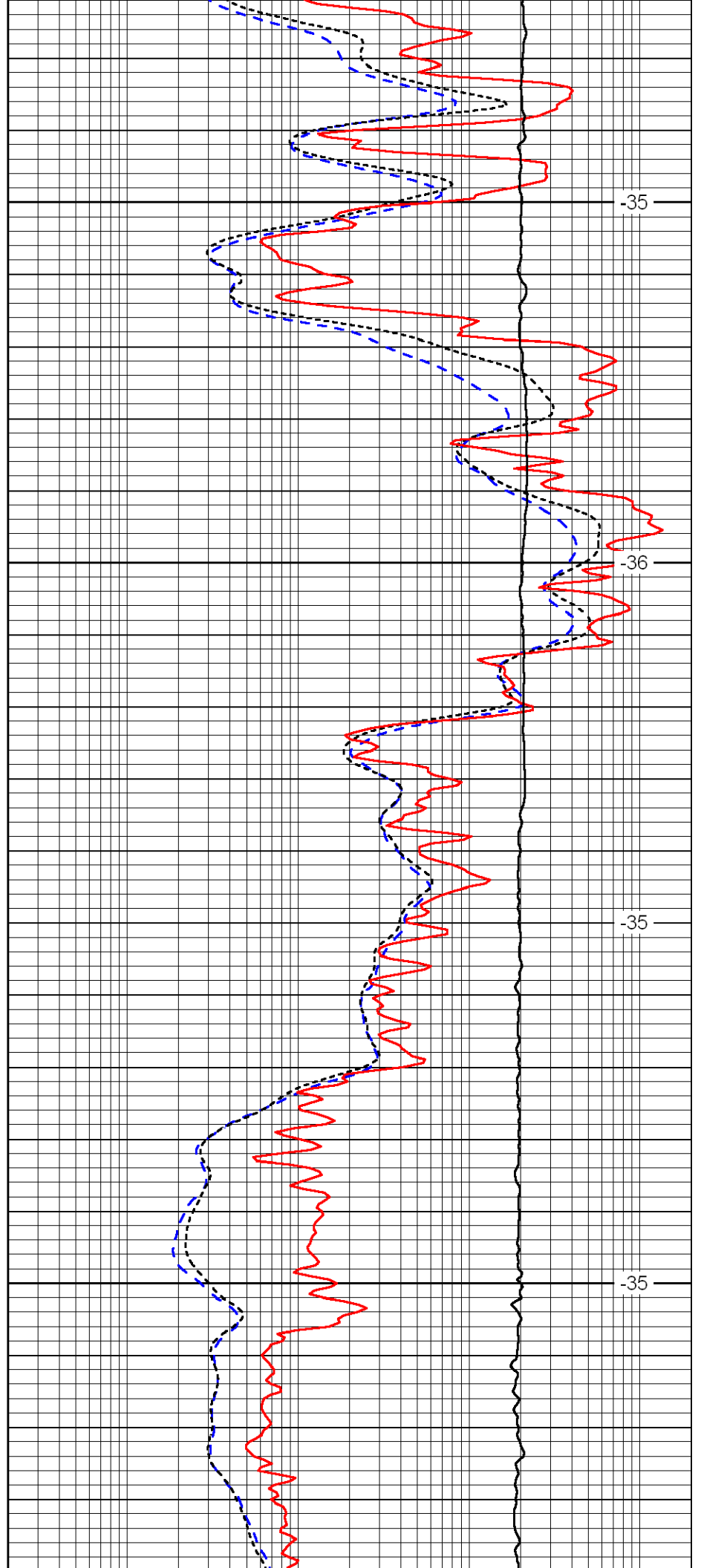


5400

5450

5500

5550

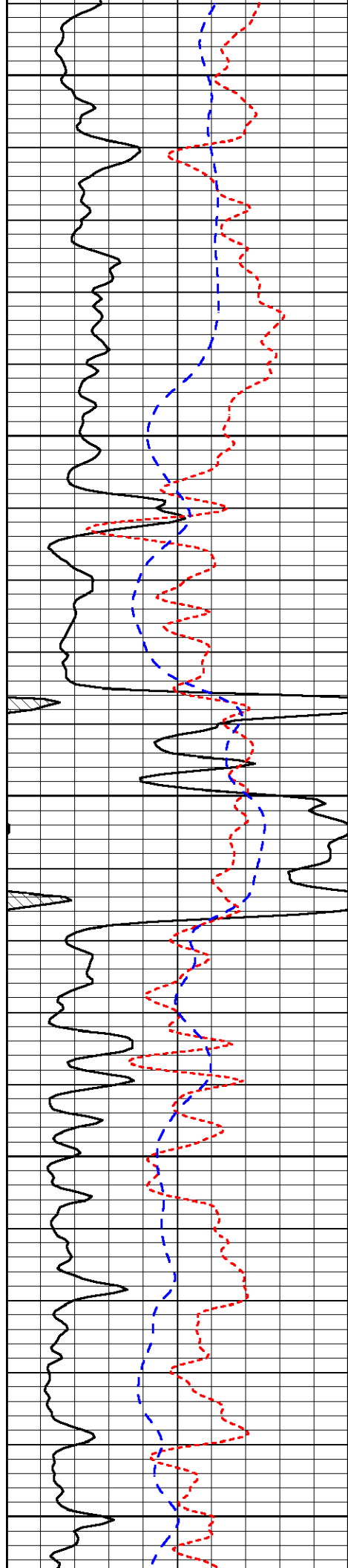


-35

-36

-35

-35



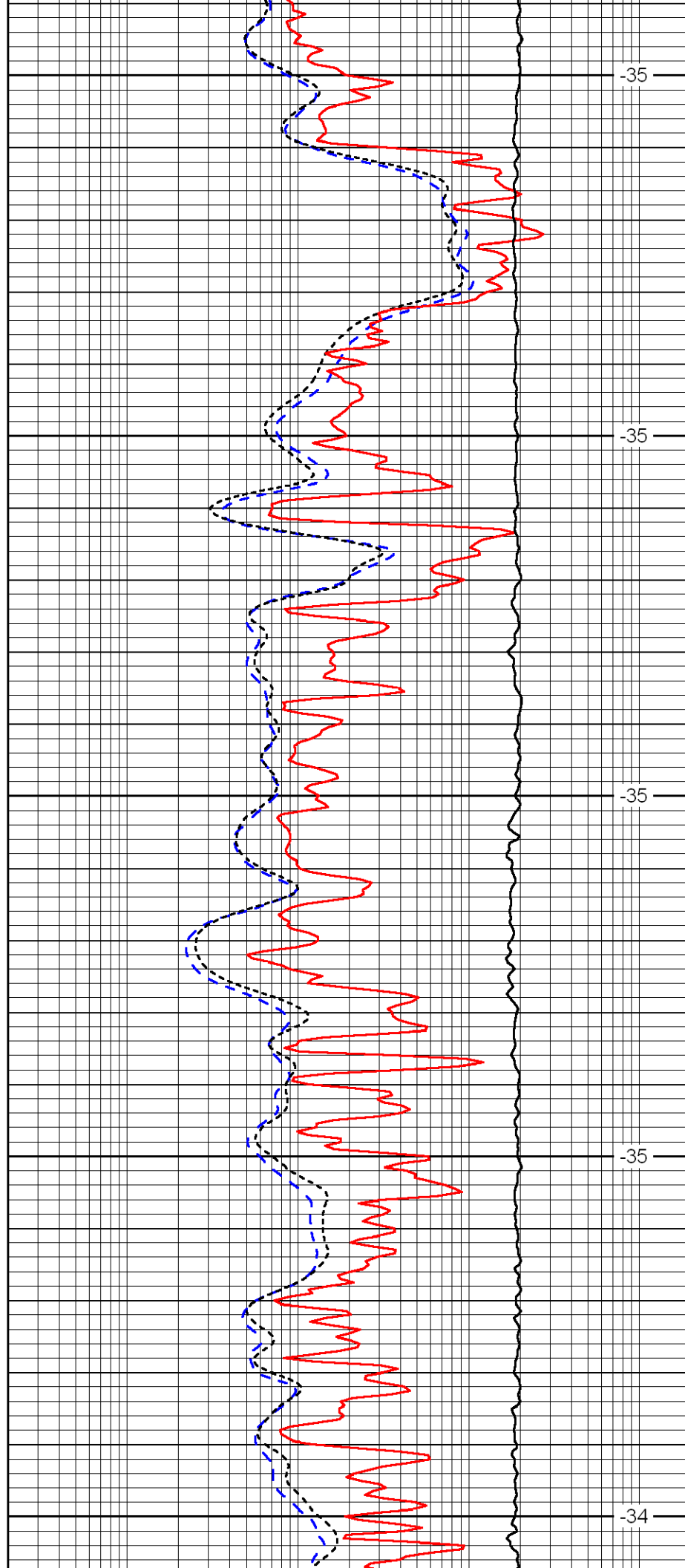
5600

5650

5700

5750

5800



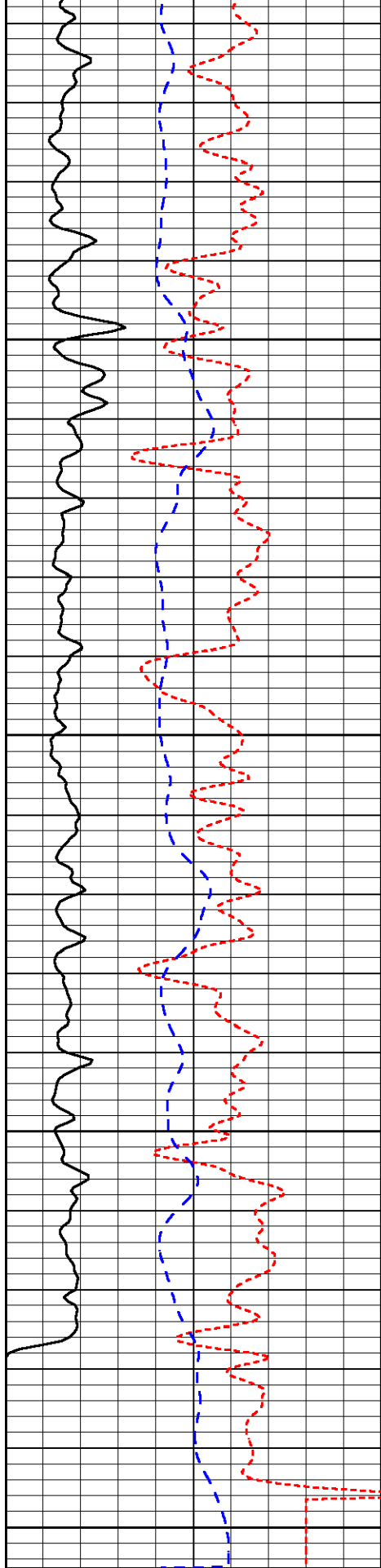
-35

-35

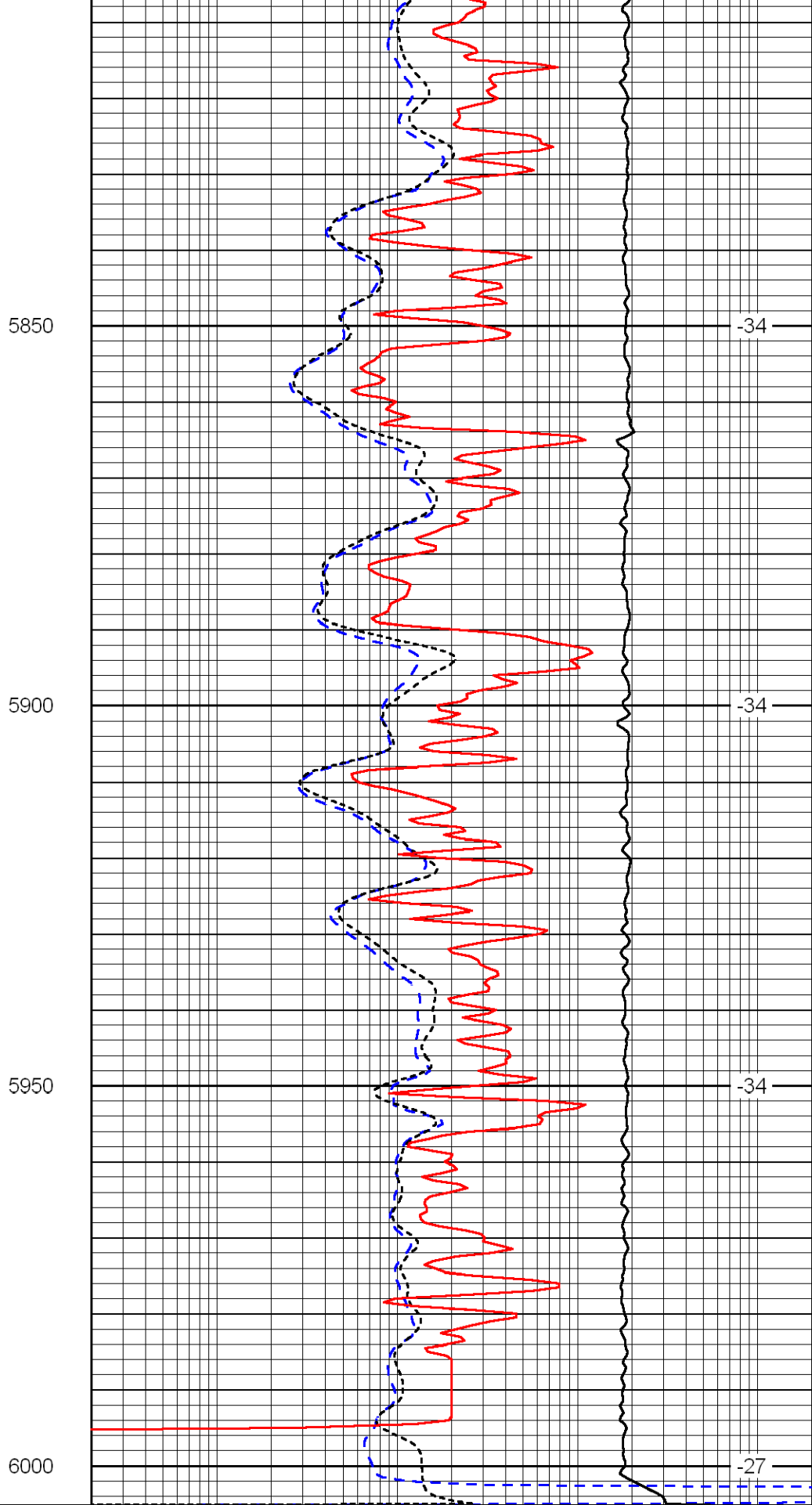
-35

-35

-34



0	Gamma Ray	150
-160	RXO/RT	40
-200	SP	0



0.2	Deep Resistivity	2000
0.2	Medium Resistivity	2000
0.2	Shallow Resistivity	2000
10000	Line Tension	0

