



**Borehole Compensated
Sonic Log**

DIGITAL LOG (785) 625-3858

API No. 15-193-20805-00-00	Company Mid-Continent Resources, Inc.	Location NW - SW - NW - SE 1698' FSL & 2539' FEL	Other Services CNL/CDL MEL/DIL
Well Moorhous 'B' No. 1-31	County Thomas		
Field Wildcat	State Kansas		
Sec: 31	Twp: 10 S	Rge: 31 W	Elevation K.B. 2994 D.F. 2985 G.L. 2985
Permanent Datum Log Measured From Drilling Measured From	Ground Level Kelly Bushing Kelly Bushing	Elevation 2985 9 Ft. Above Perm. Datum	

Date	8/20/2011				
Run Number	Two				
Type Log	BHC Sonic				
Depth Driller	4700				
Depth Logger	4694				
Bottom Logged Interval	4683				
Top Logged Interval	250				
Type Fluid In Hole	Chemical				
Salinity, PPM CL	3200				
Density	9.1				
Level	Full				
Max. Rec. Temp. F	123				
Operating Rig Time	5 Hours				
Equipment -- Location	17 Hays				
Recorded By	B. Becker				
Witnessed By	Jeff Lawler				

Borehole Record		Casing Record					
Run No	Bit	From	To	Size	Wgt.	From	To
One	12.25	00	270	8.625	23#	00	270
Two	7.875	270	TD				

<<< Fold Here >>>

All interpretations are opinions based on inferences from electrical or other measurements and we cannot and do not guarantee the accuracy or correctness of any interpretation, and we shall not, except in the case of gross or willful negligence on our part, be liable or responsible for any loss, costs, damages, or expenses incurred or sustained by anyone resulting from any interpretation made by any of our officers, agents or employees. These interpretations are also subject to our general terms and conditions set out in our current Price Schedule.

Comments

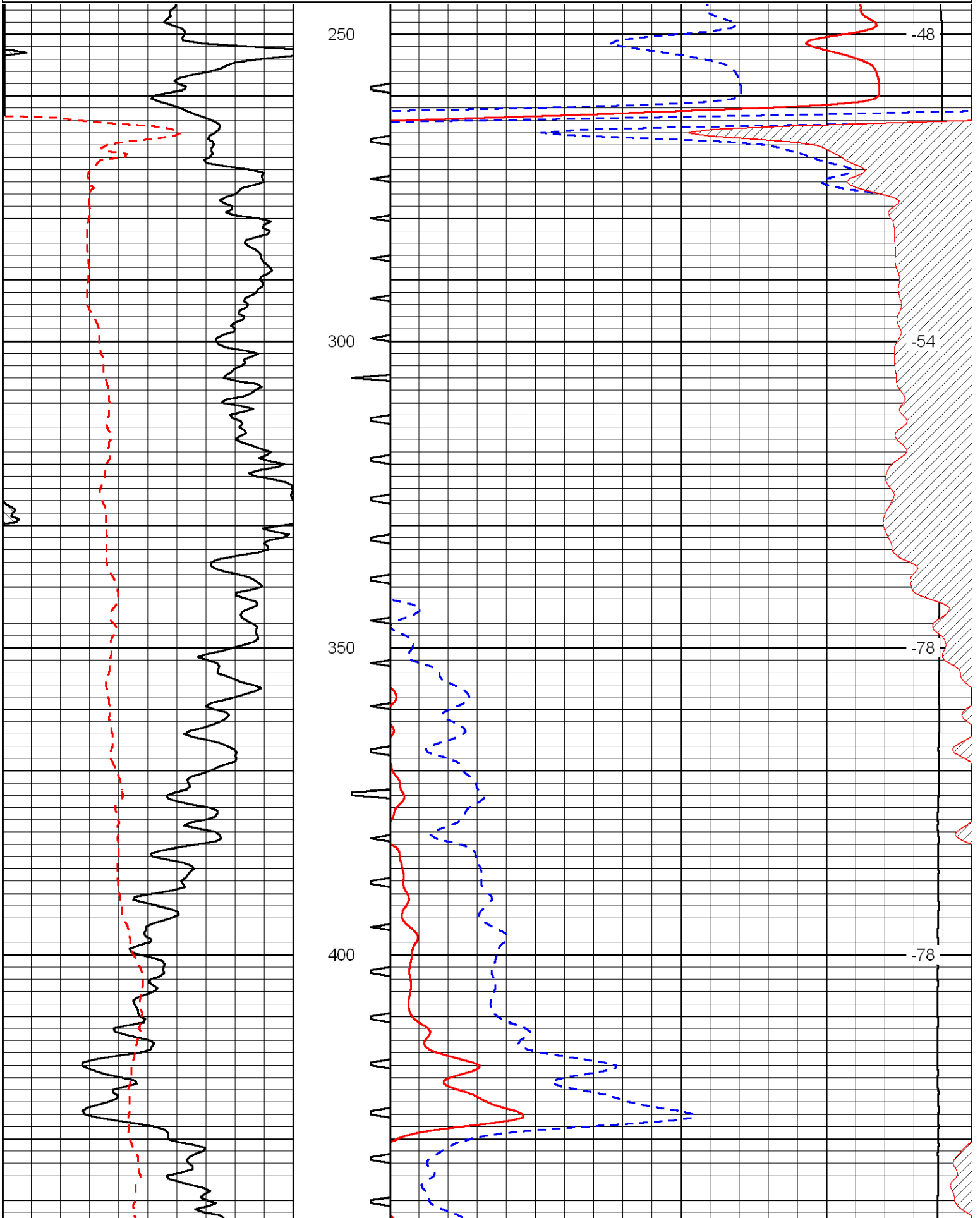
Thank you for using Log-Tech, Inc.
(785) 625-3858

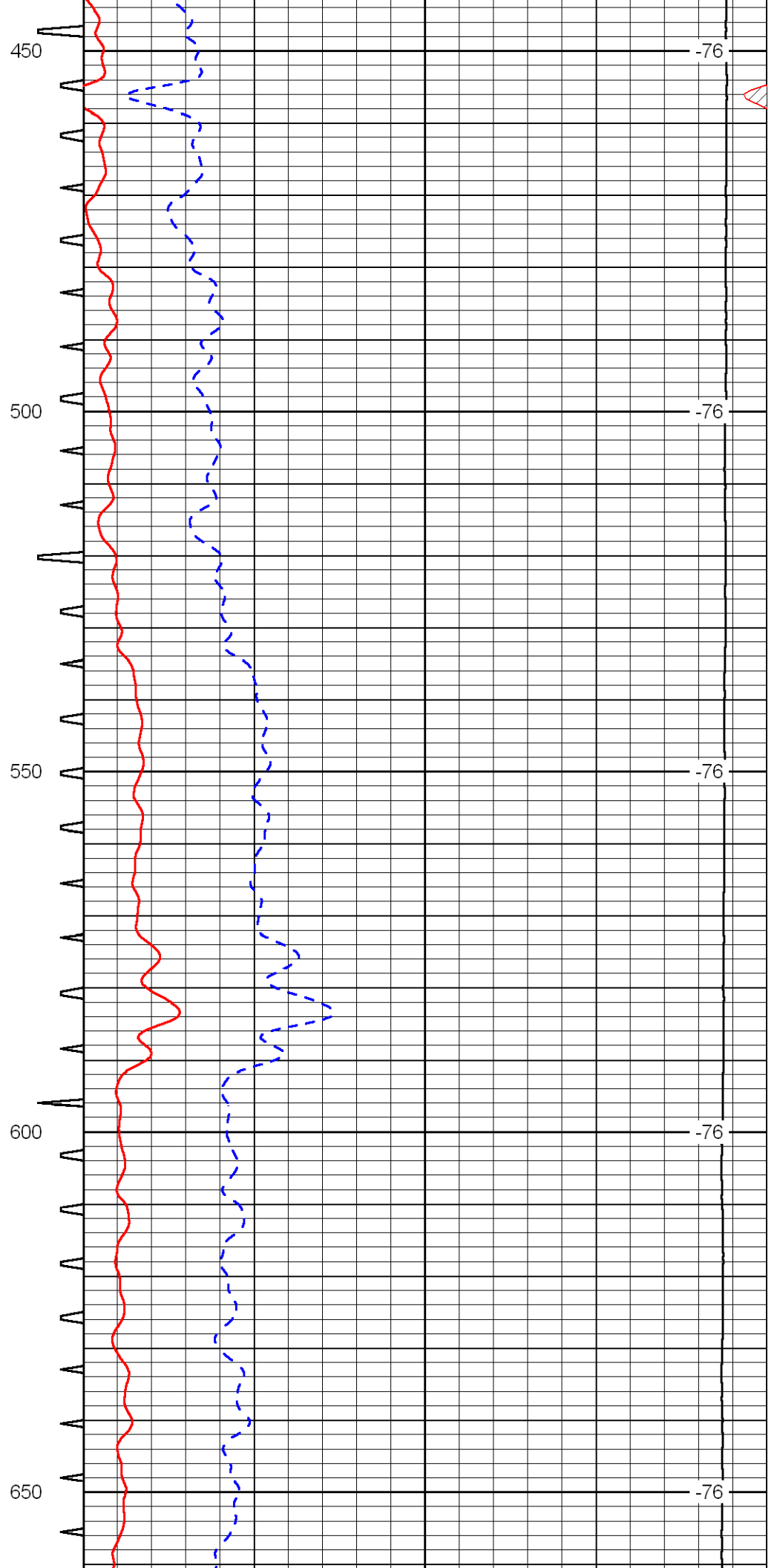
Oakley, Ks; (Mitten's Truck Stop)
1 West; 1 North; 1 East; 3/4 North;
West Into (bottom of hill)

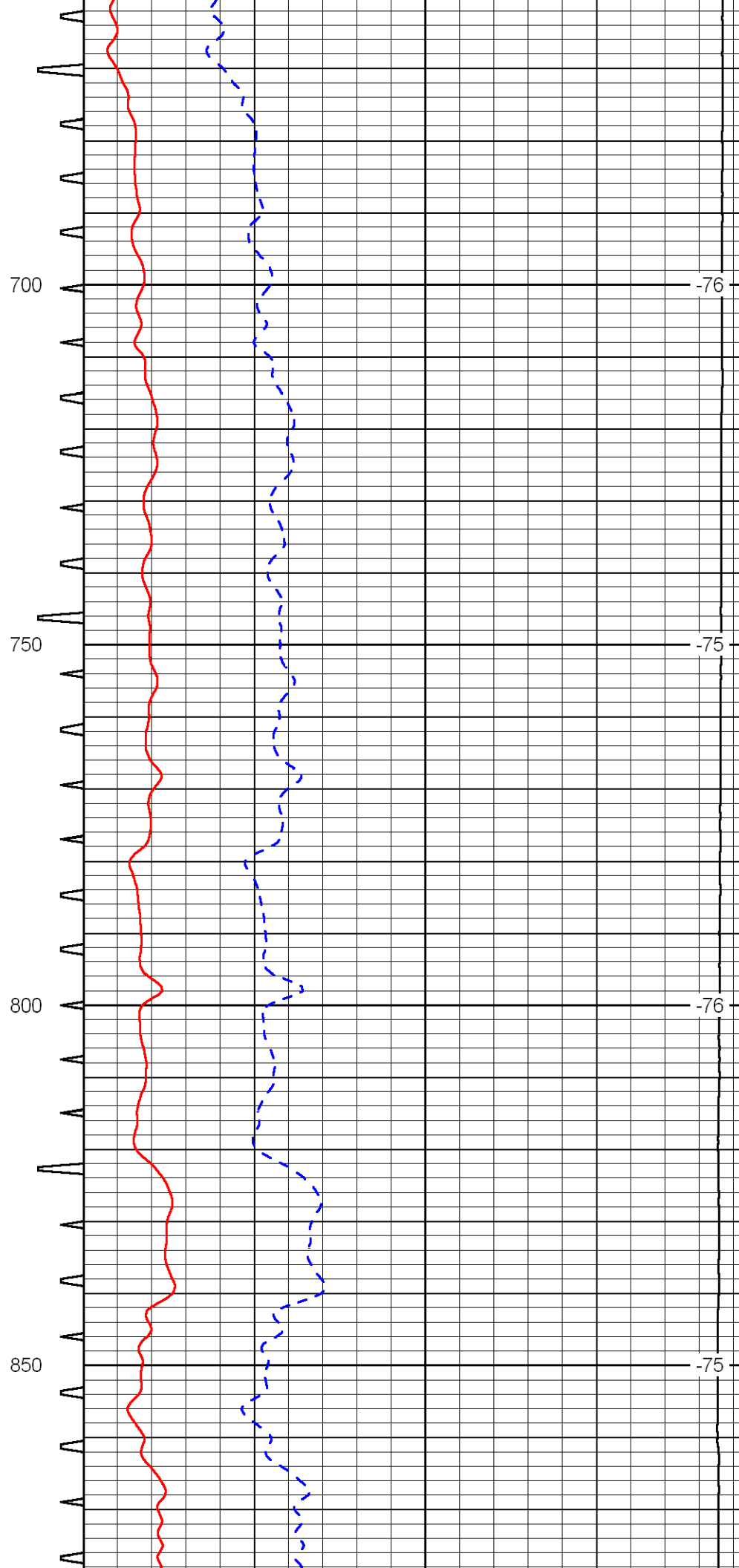
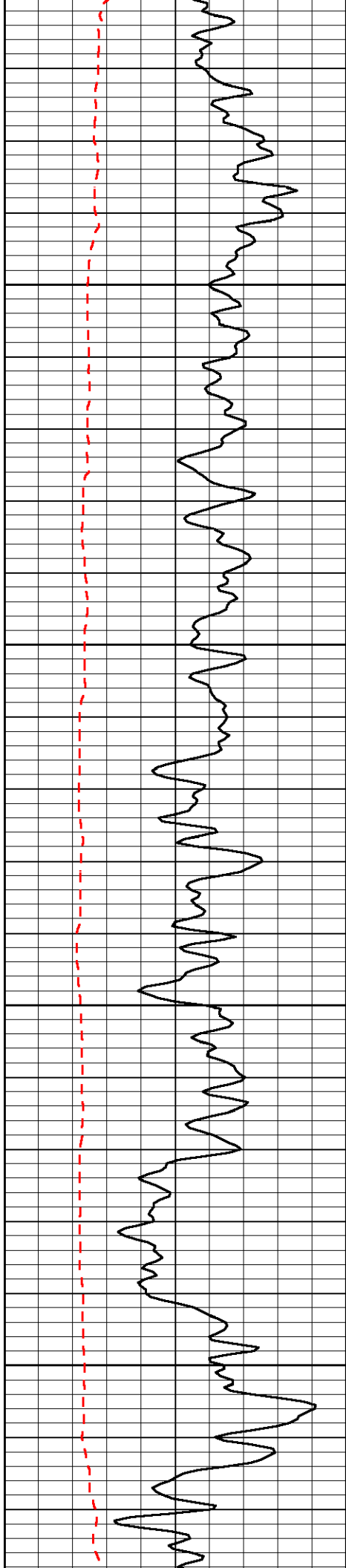
Database File: midconhd.db
 Dataset Pathname: DIL/mconstk
 Presentation Format: sonic
 Dataset Creation: Sat Aug 20 23:36:49 2011
 Charted by: Depth in Feet scaled 1:240

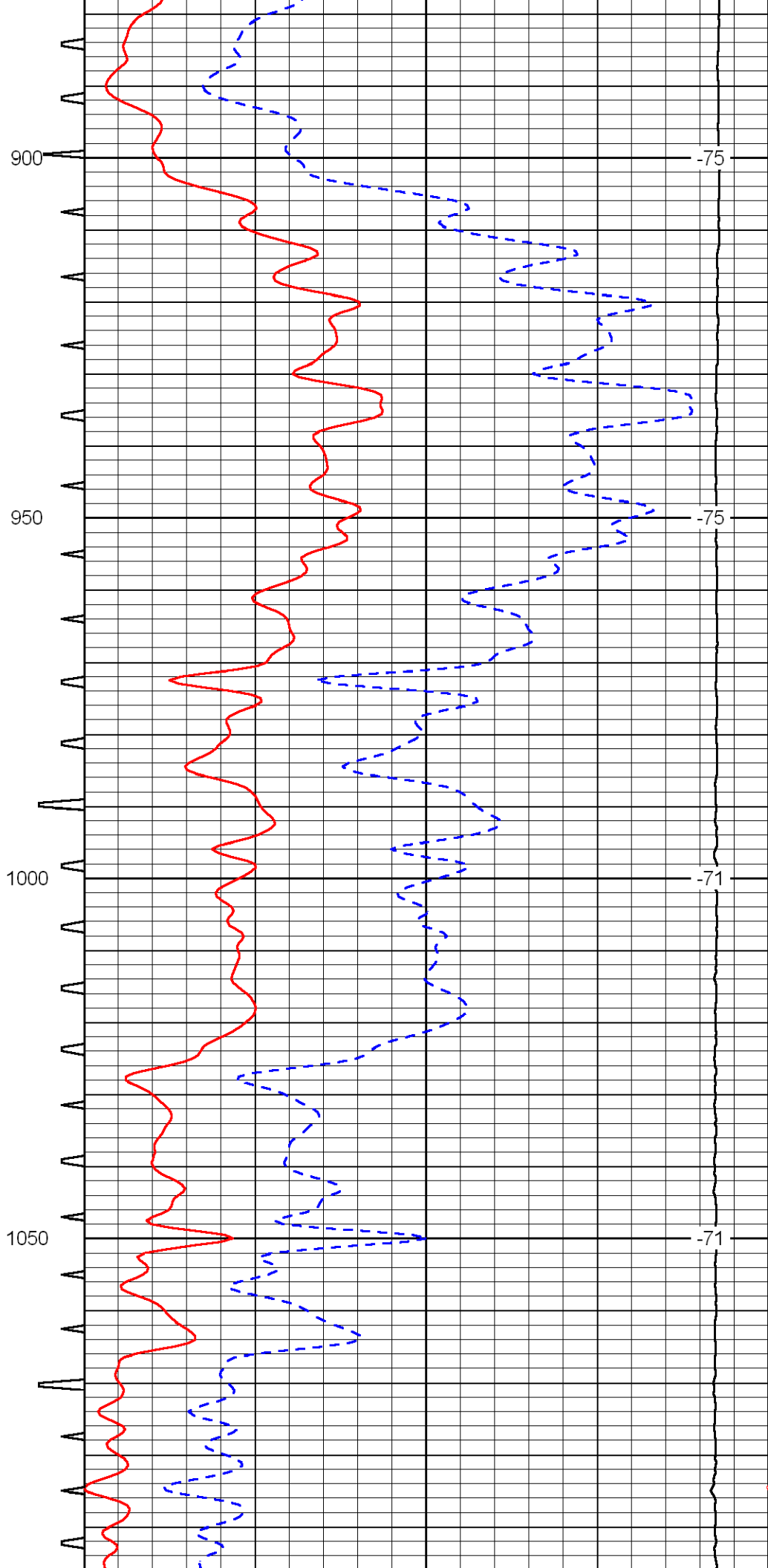
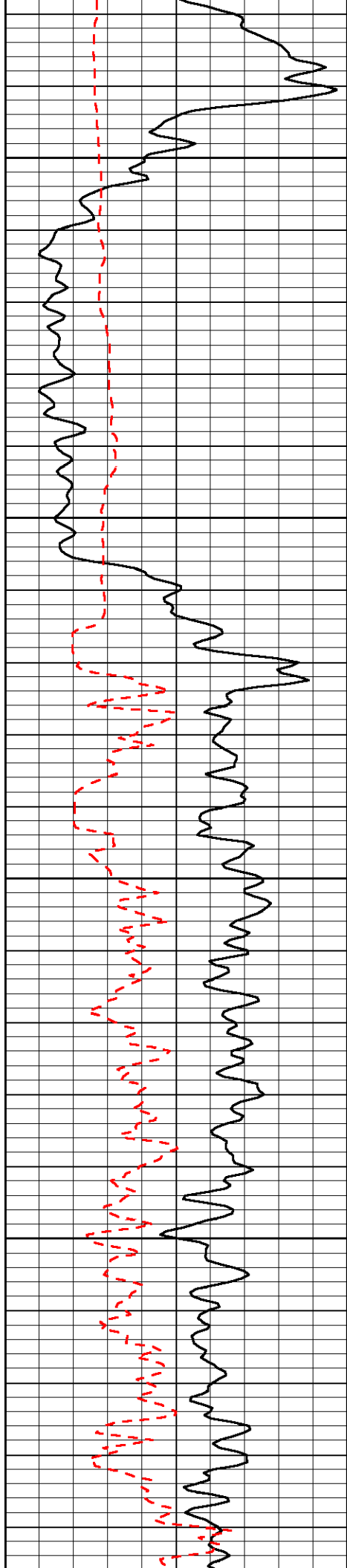
0	Gamma Ray	150	Sonic Int	140	Delta Time (usec/ft)	40
150	Gamma Ray	300	5	0	Sonic Porosity	-10
6	dCAL (GAPI)	16		15000	LTEN (lb)	0

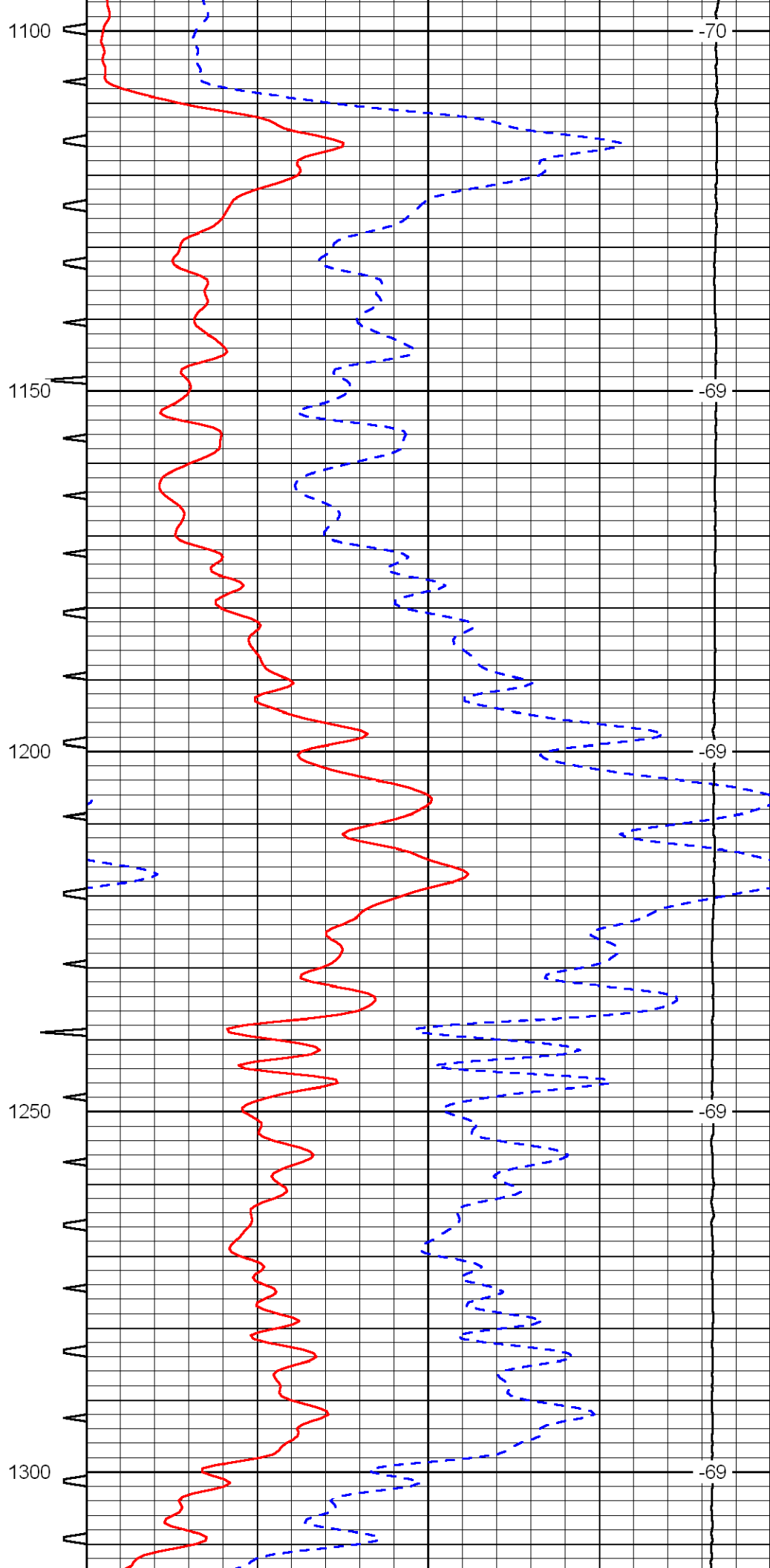
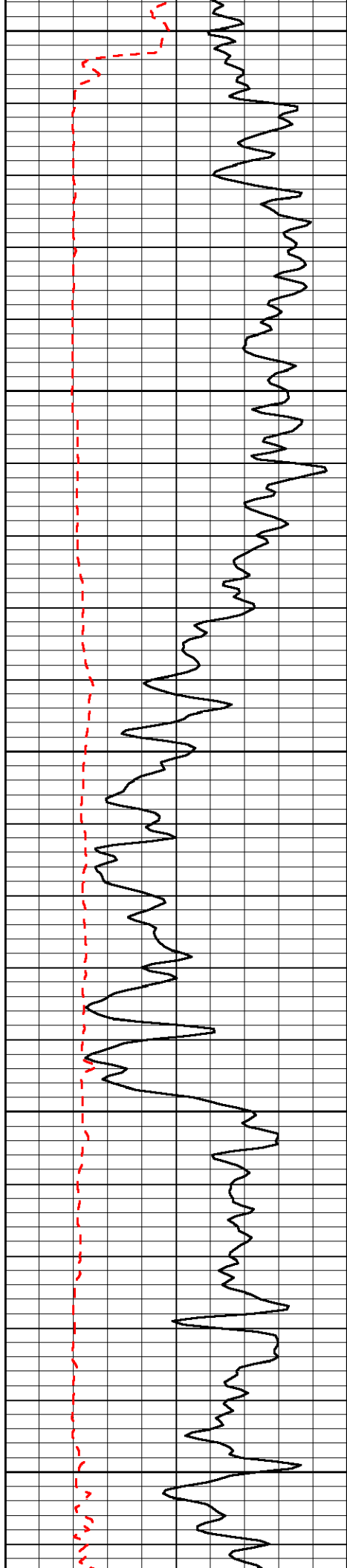
LSPD

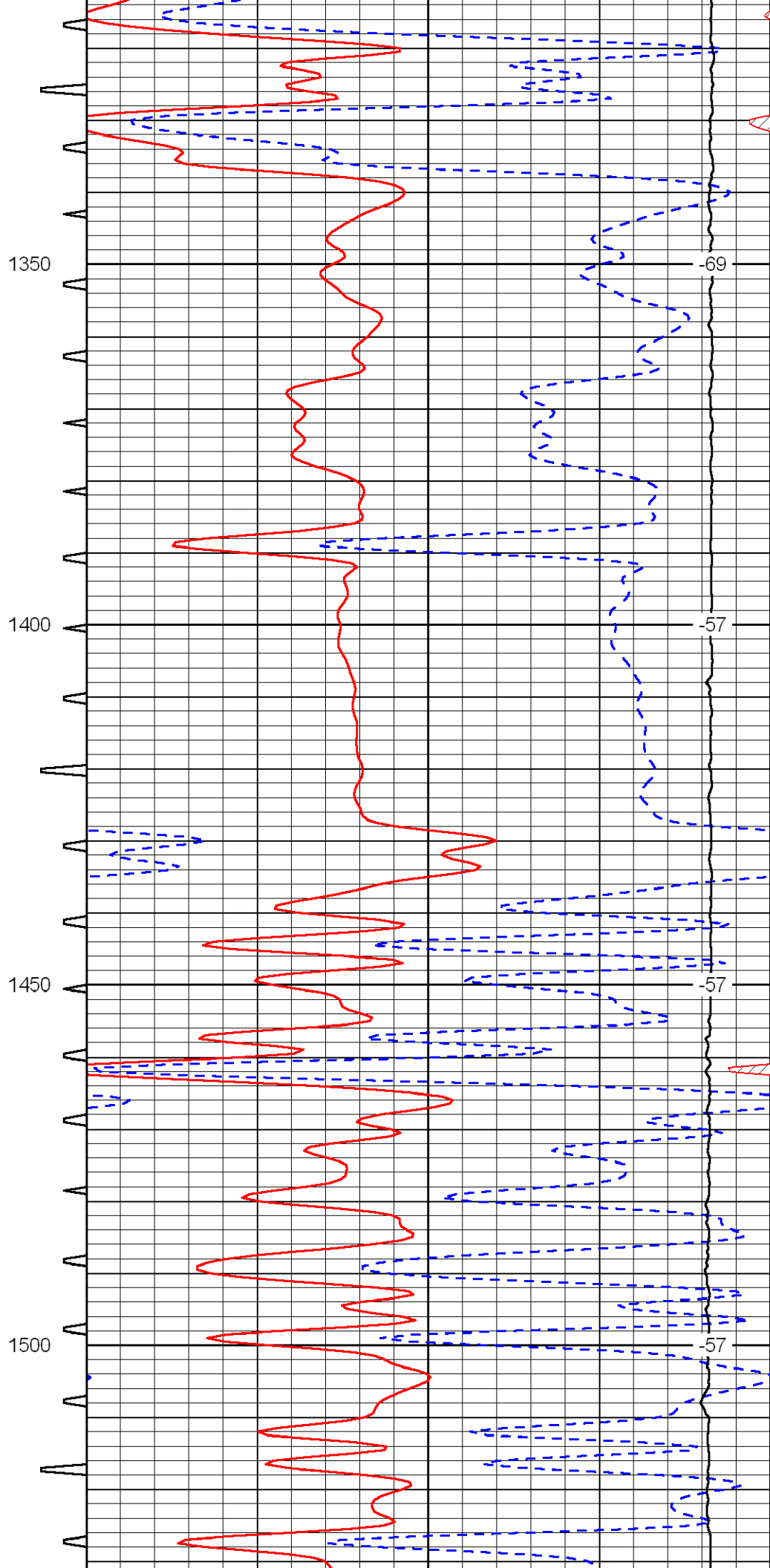
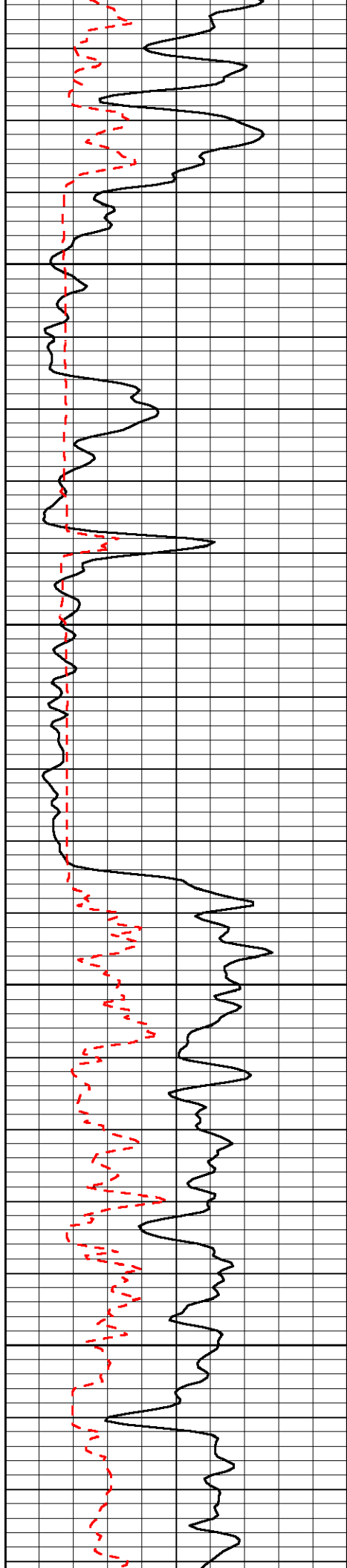


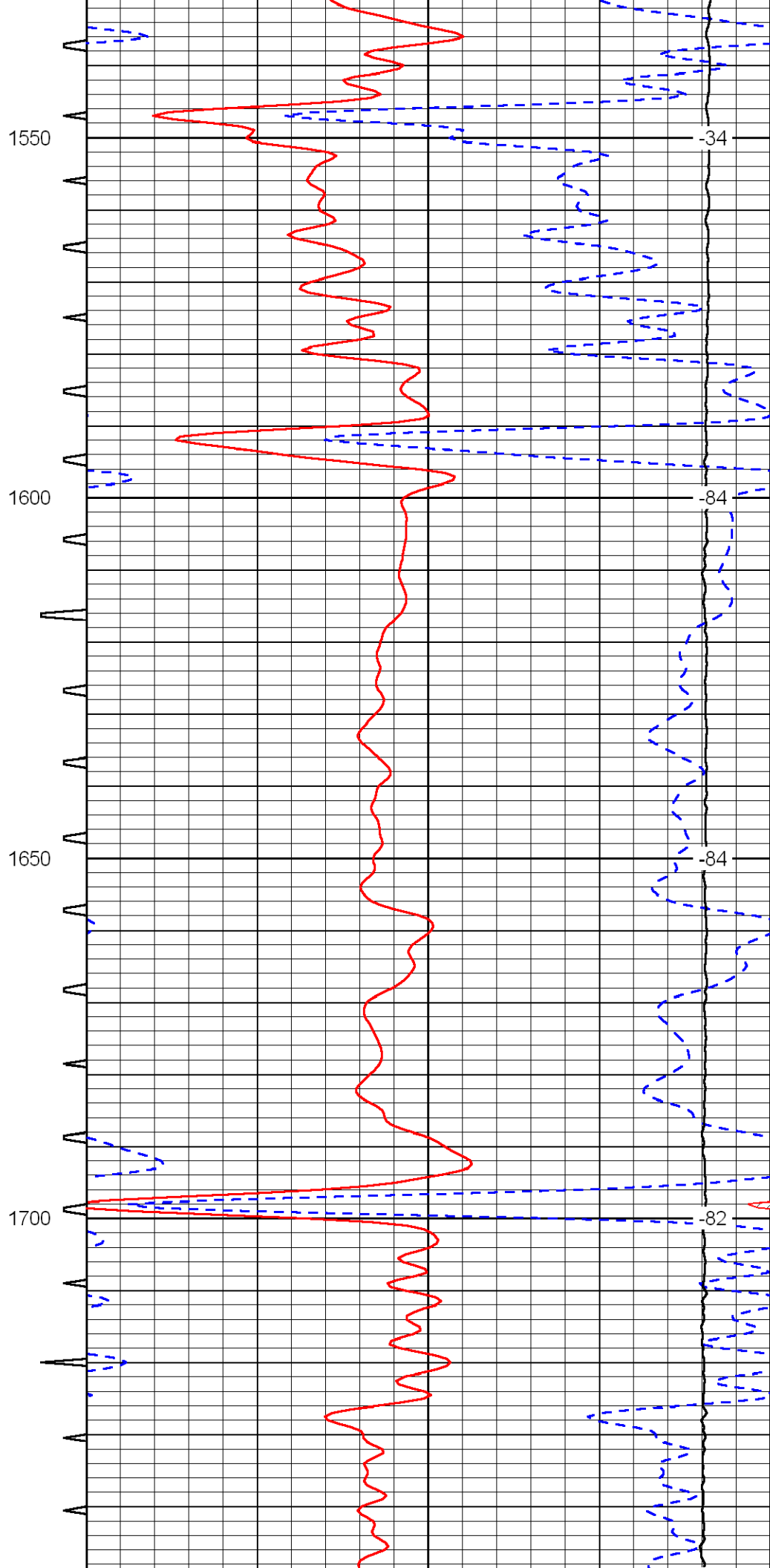
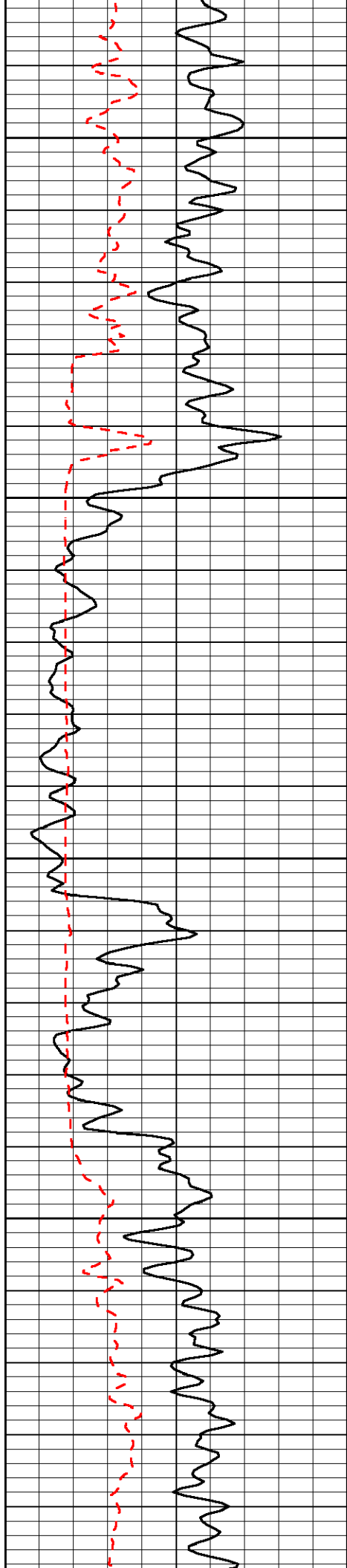


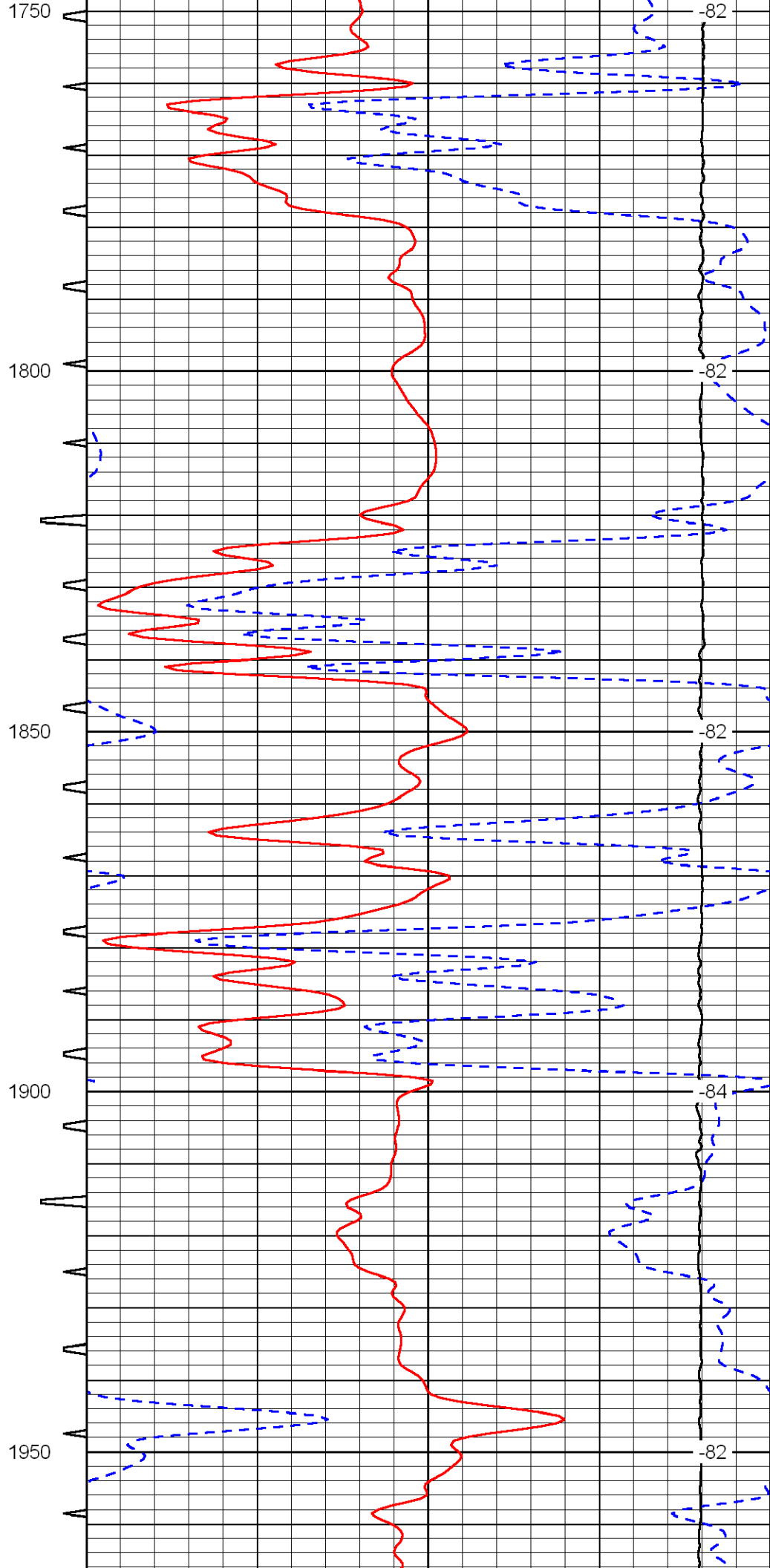
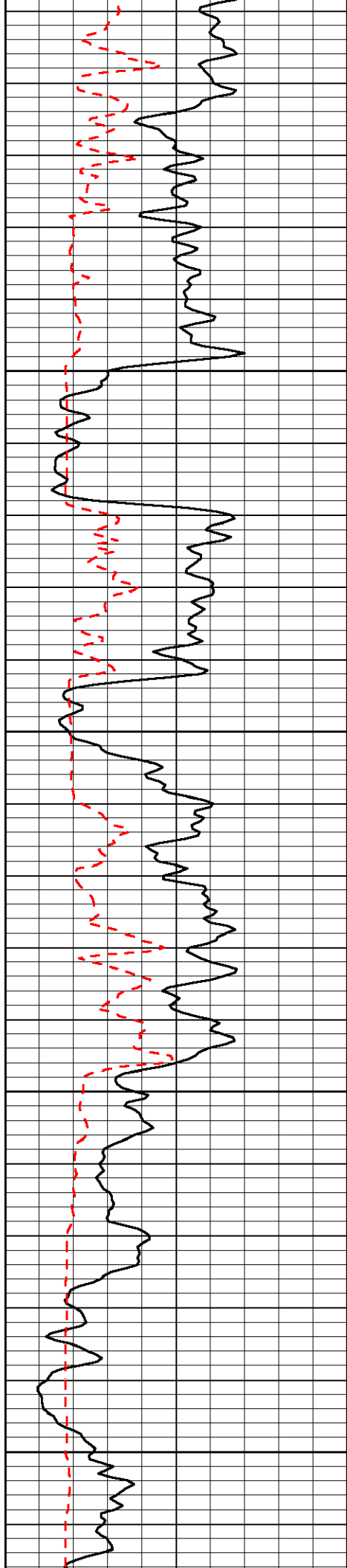


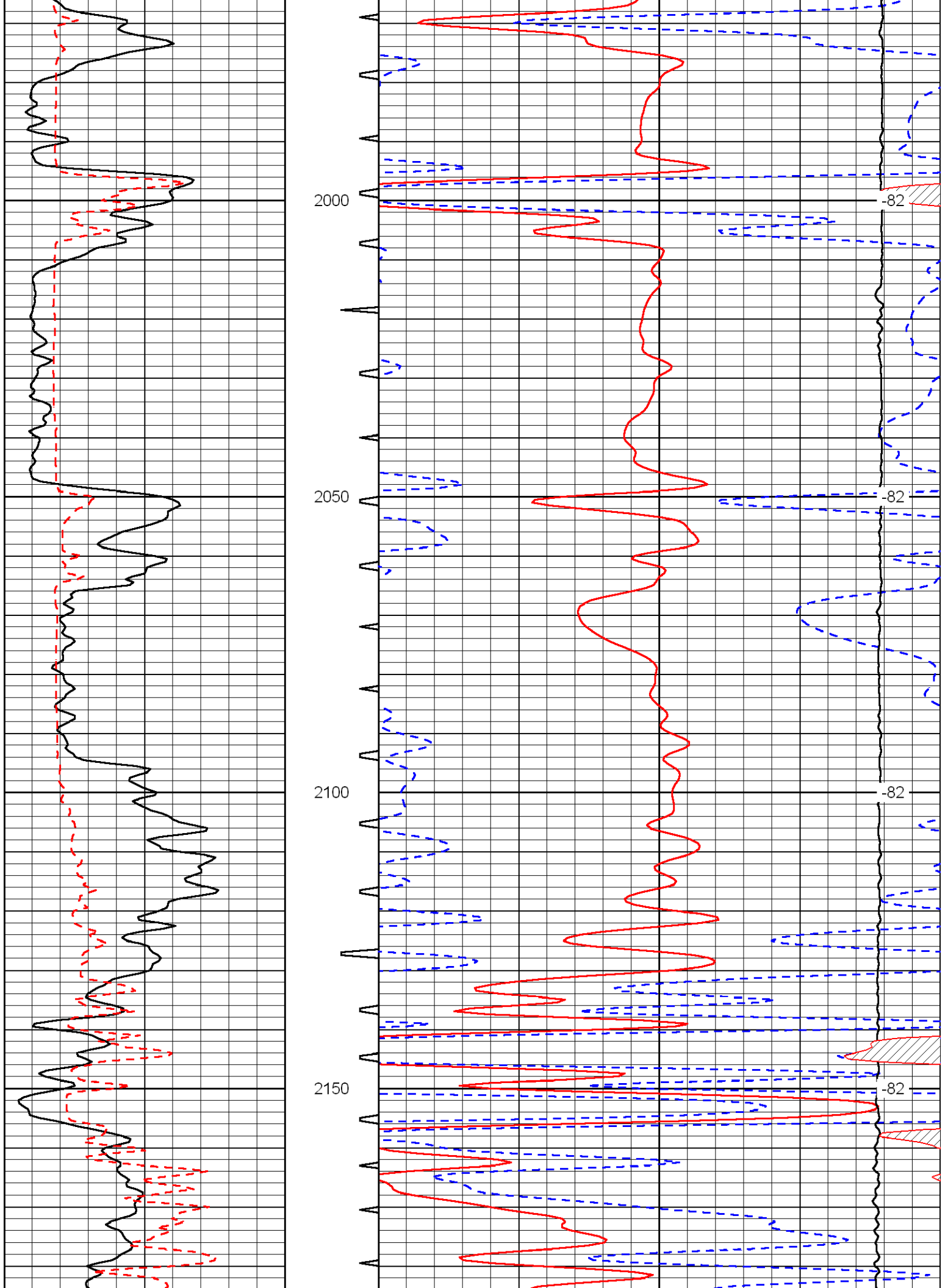


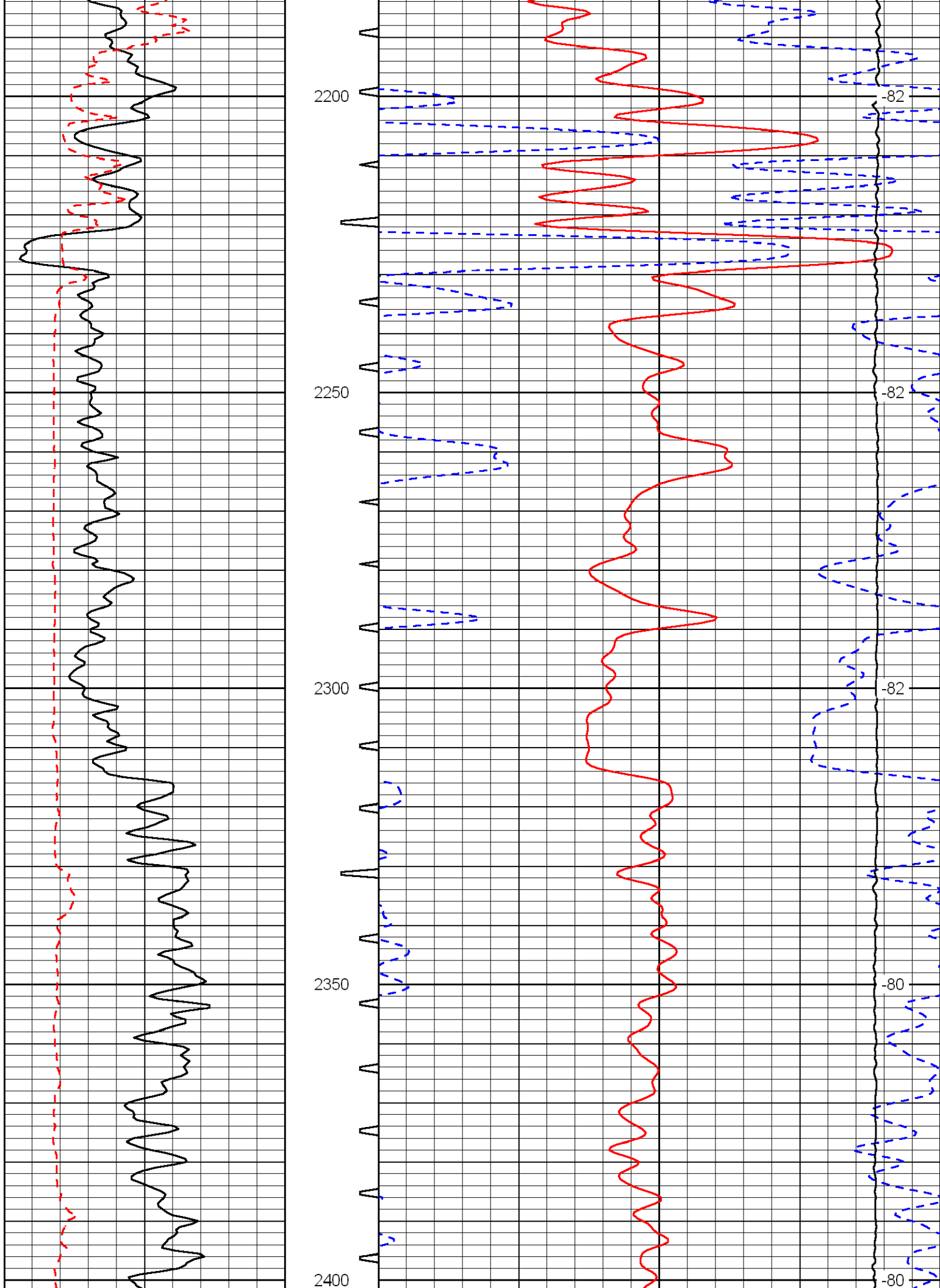


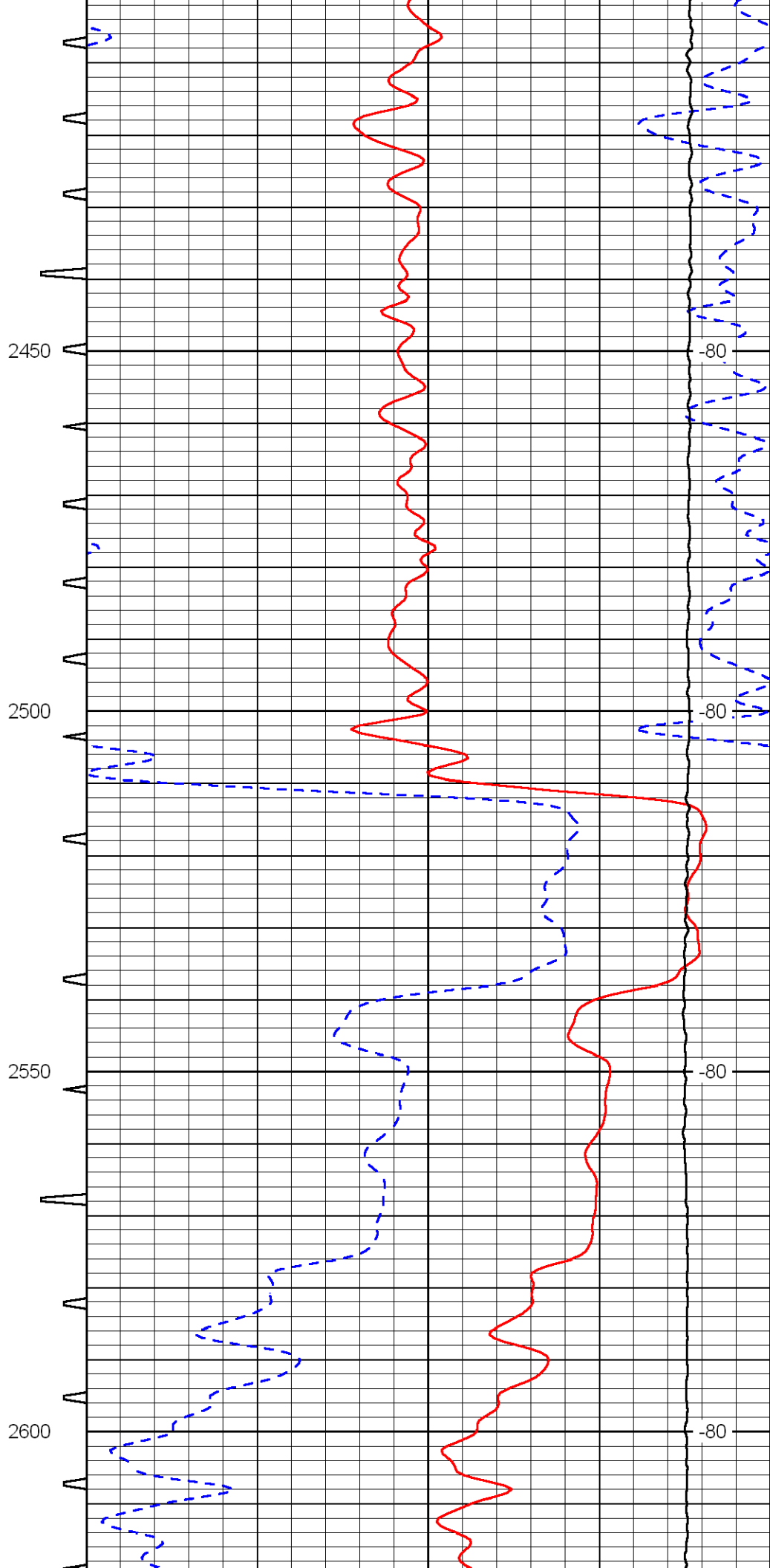
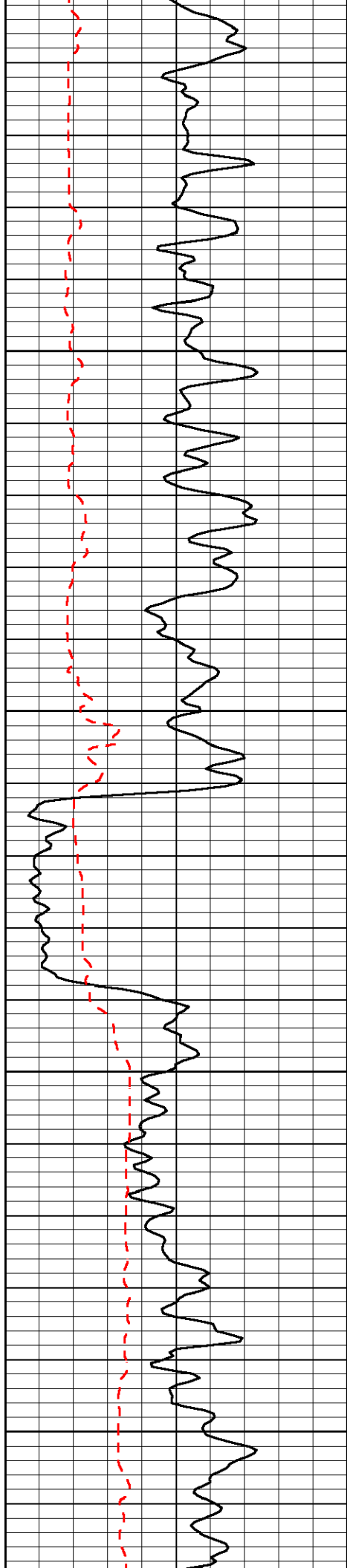


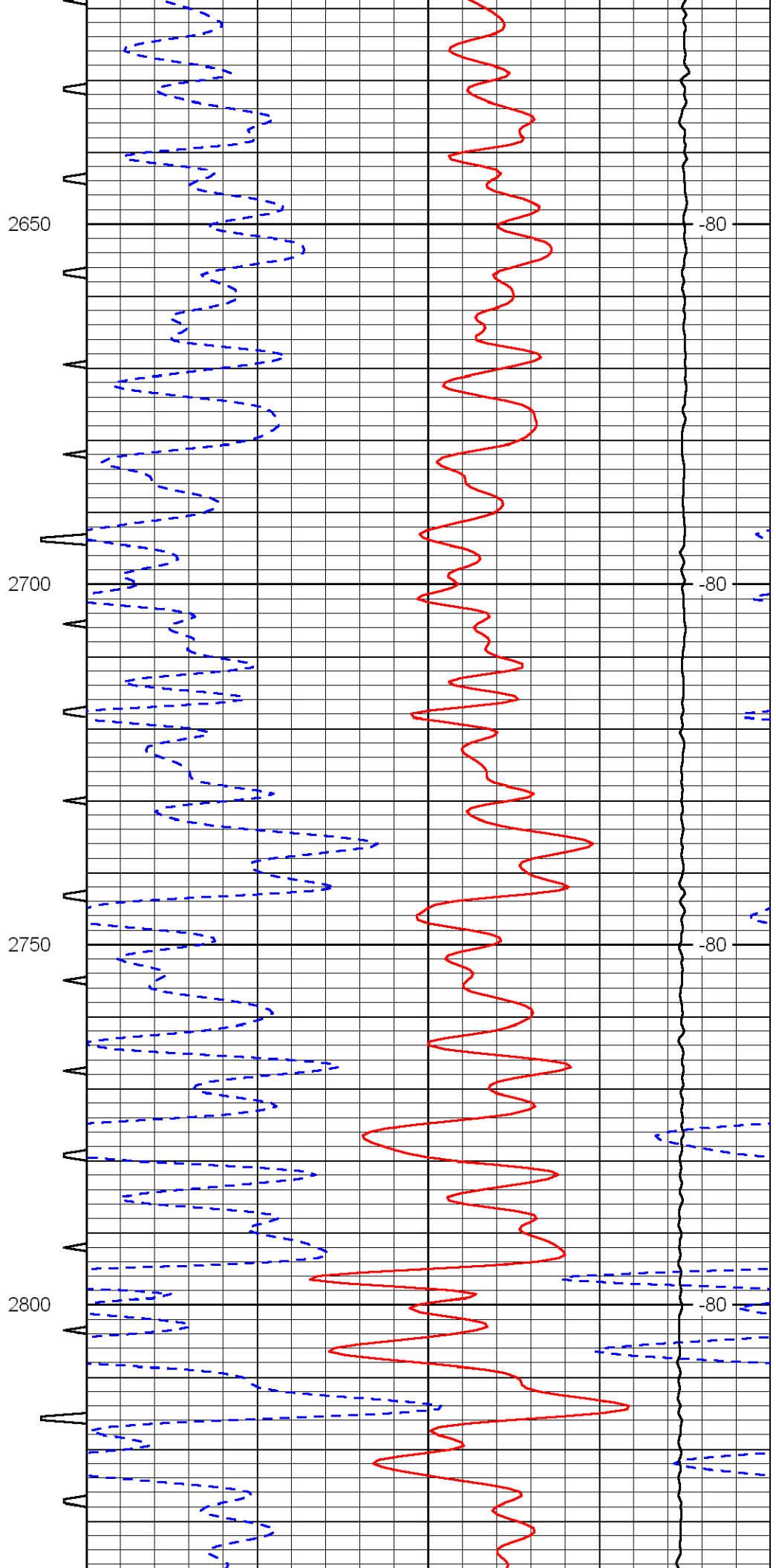
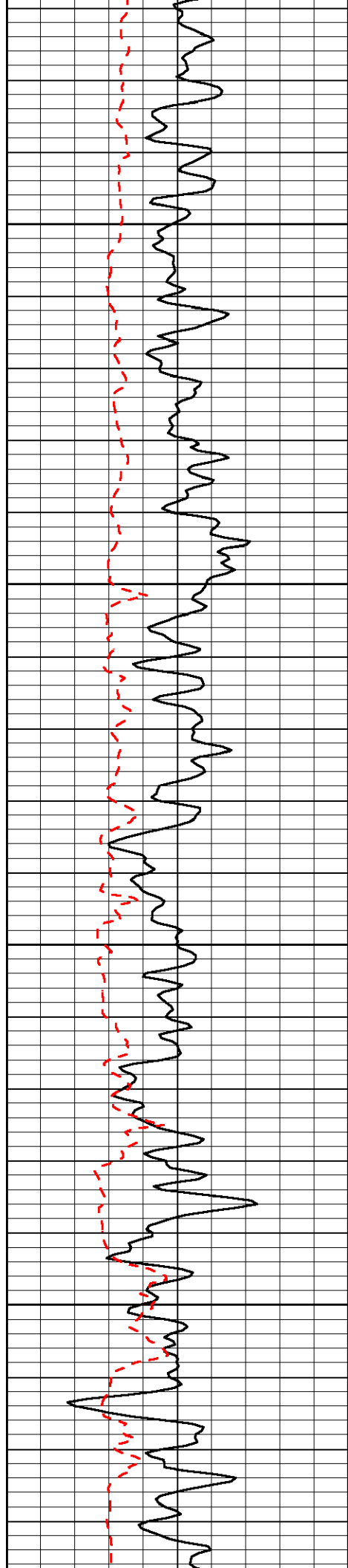


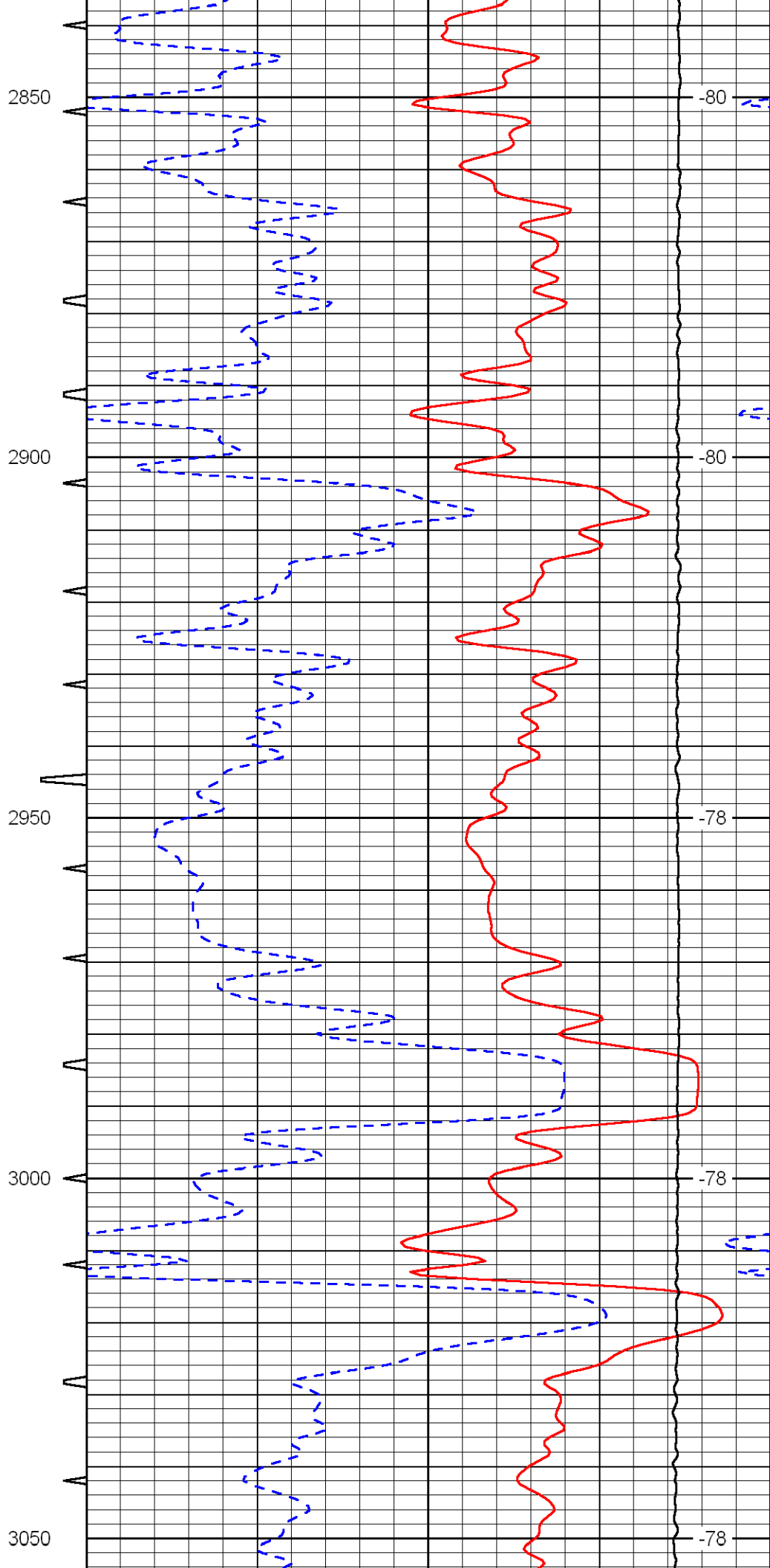
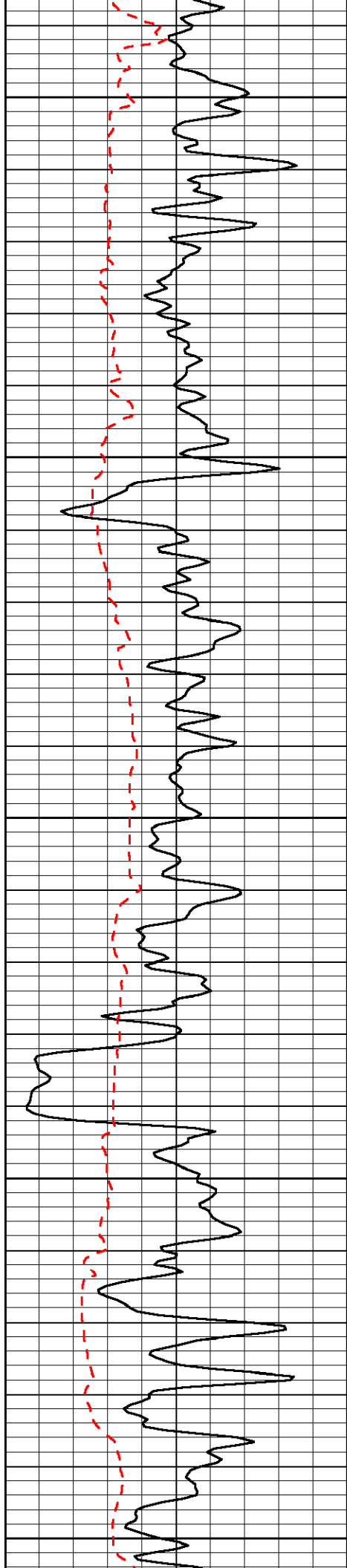


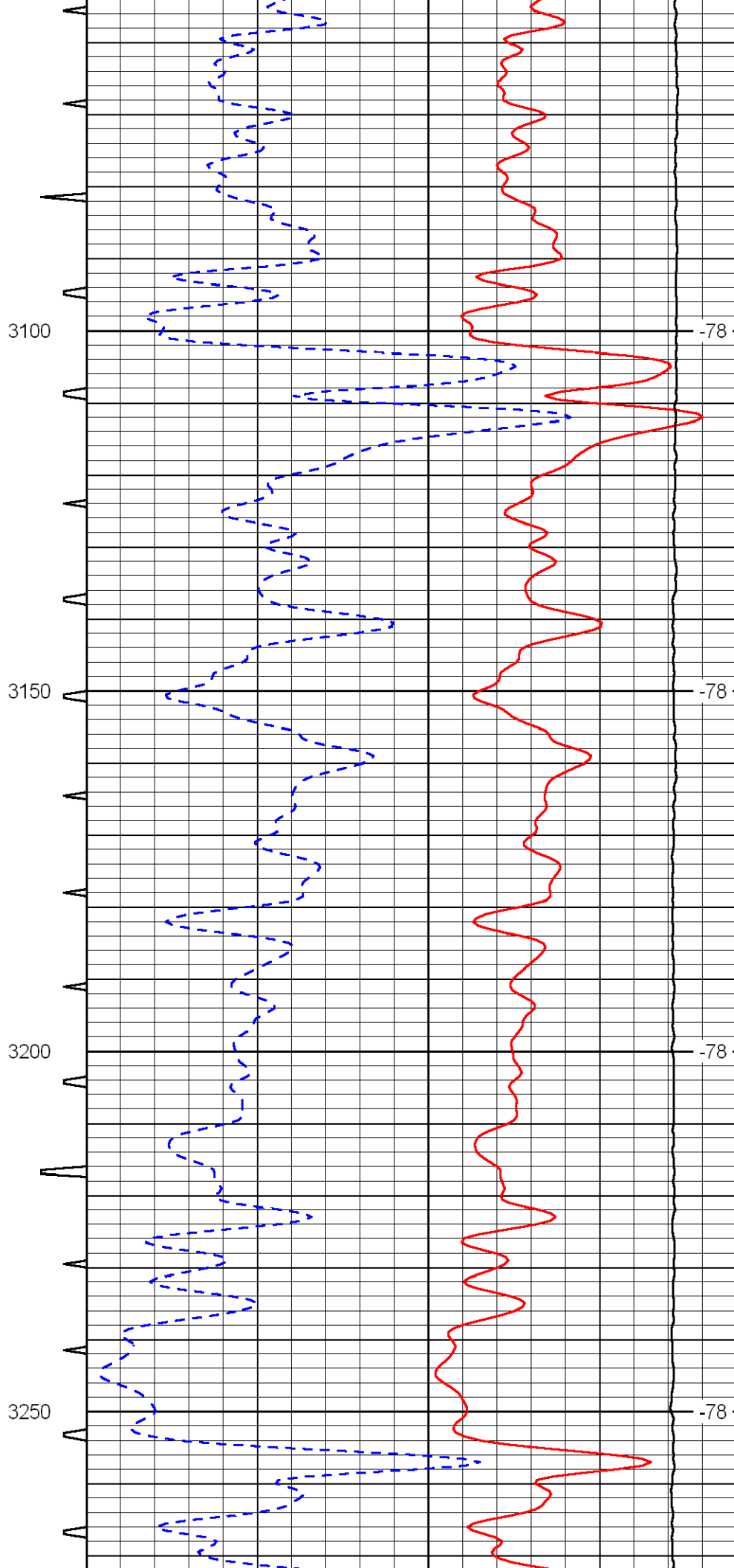
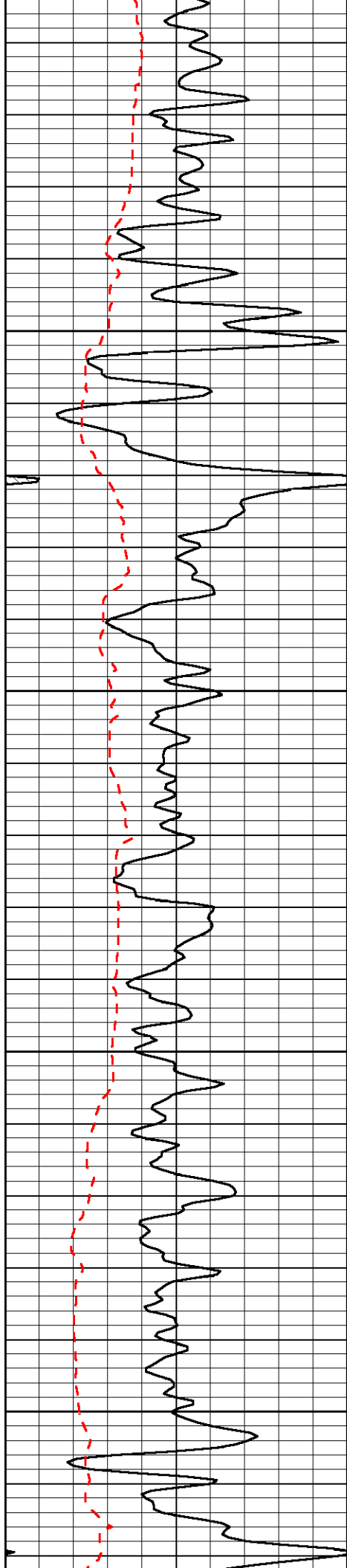


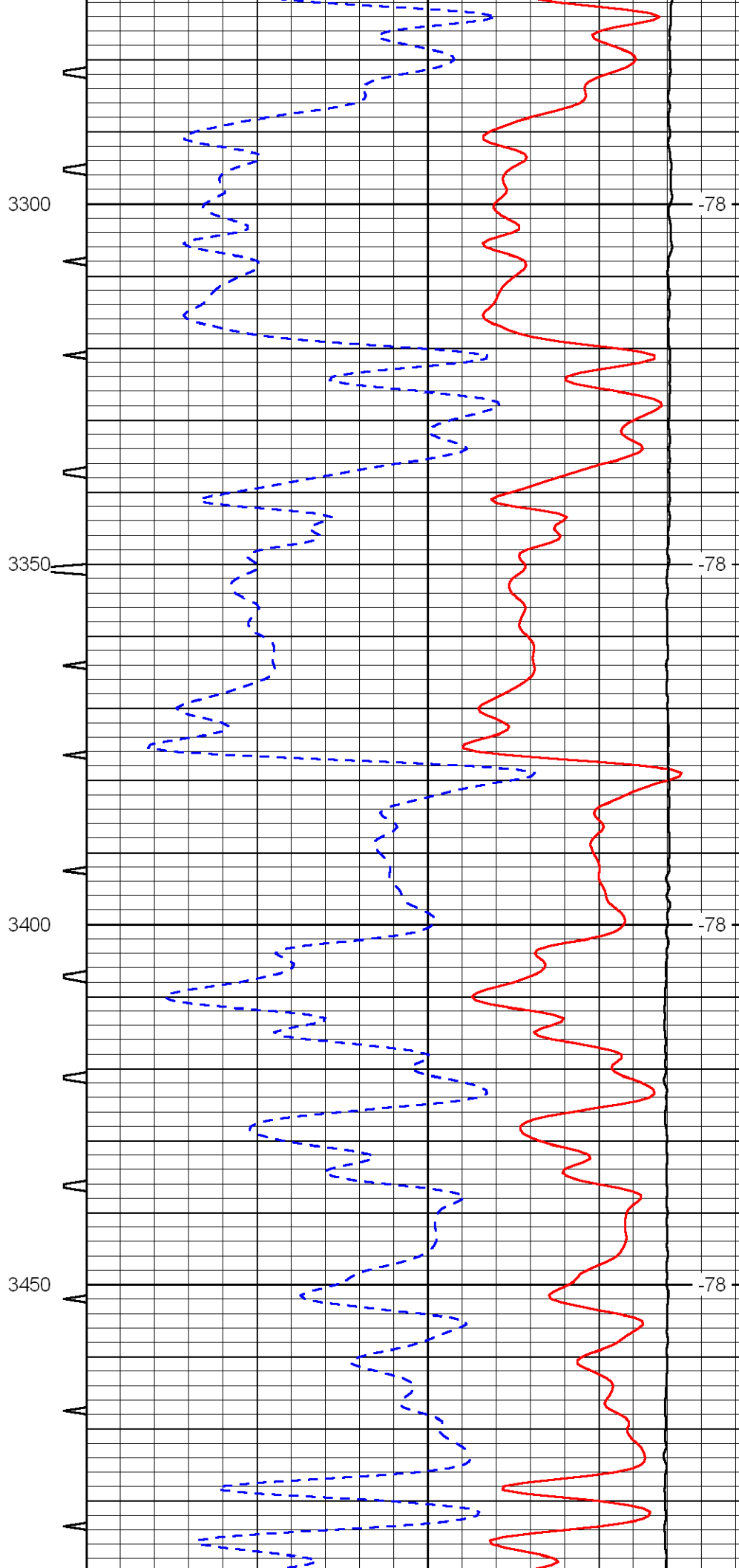
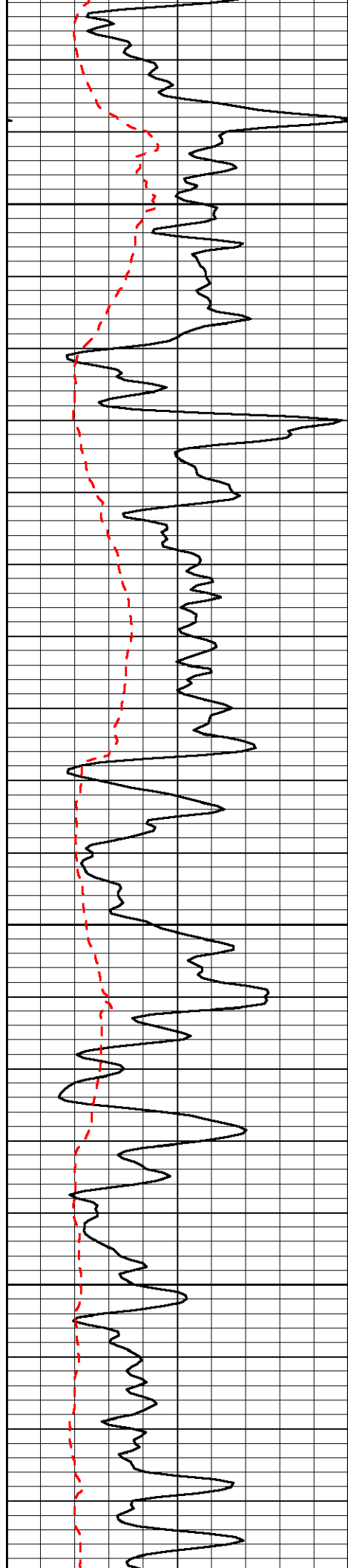


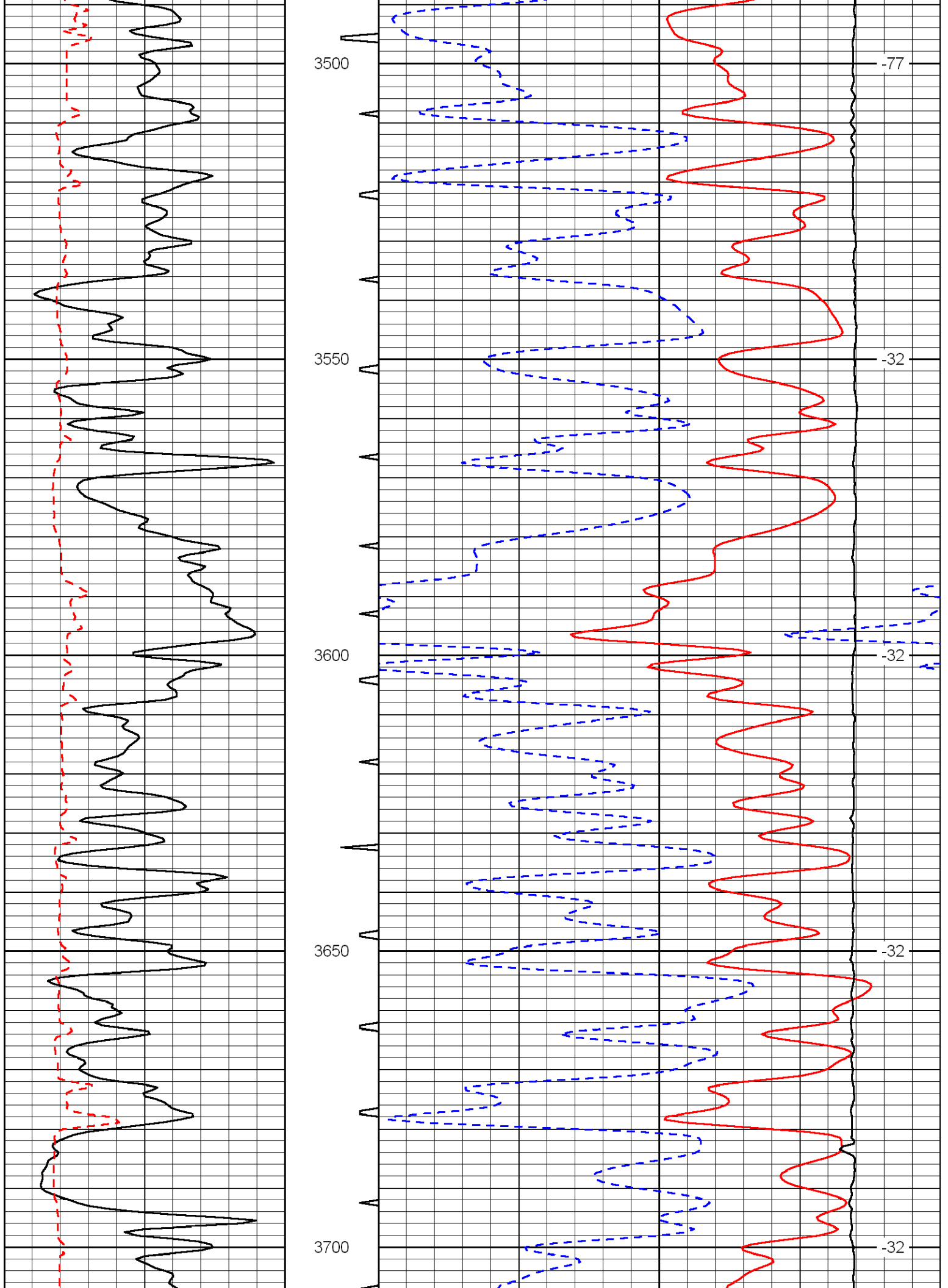


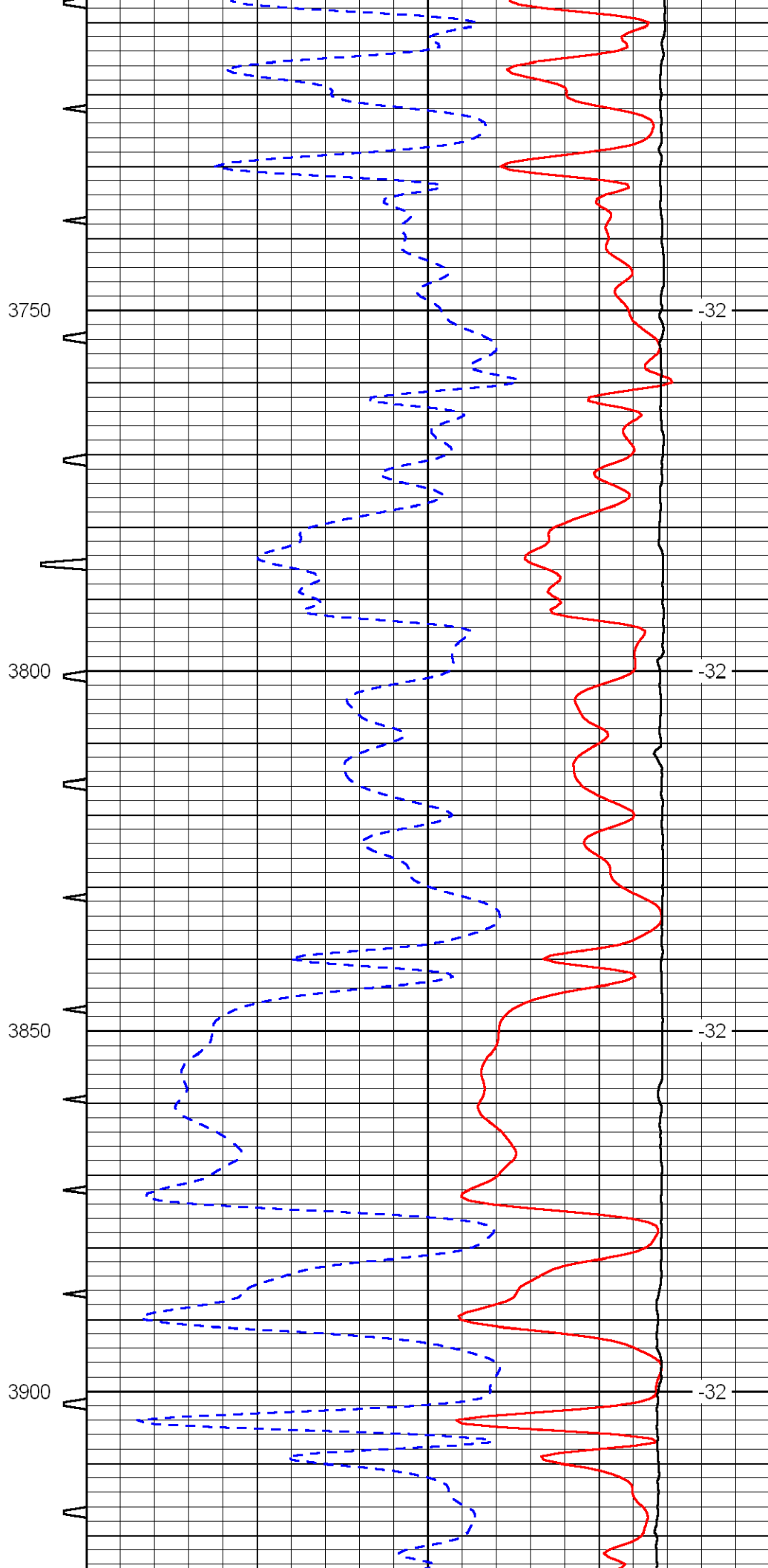
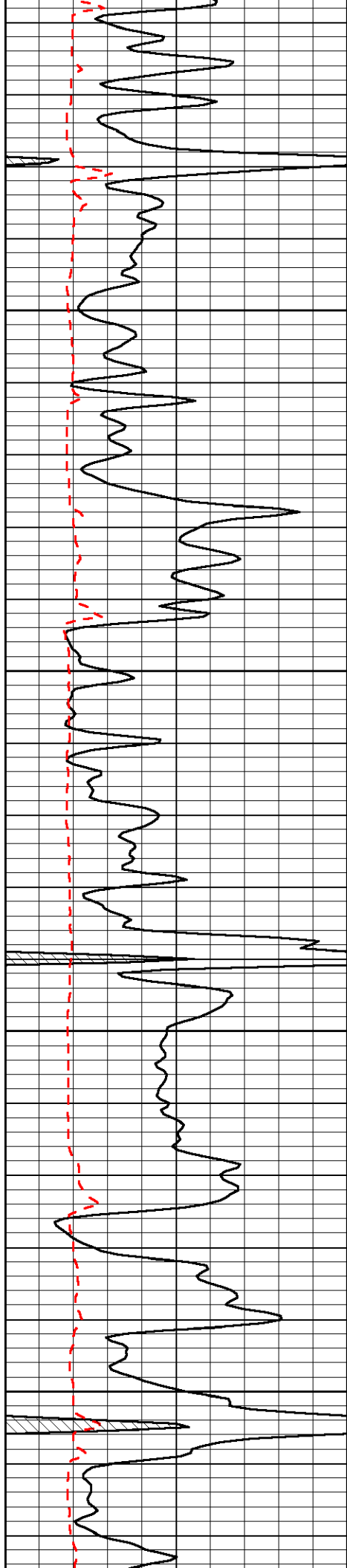


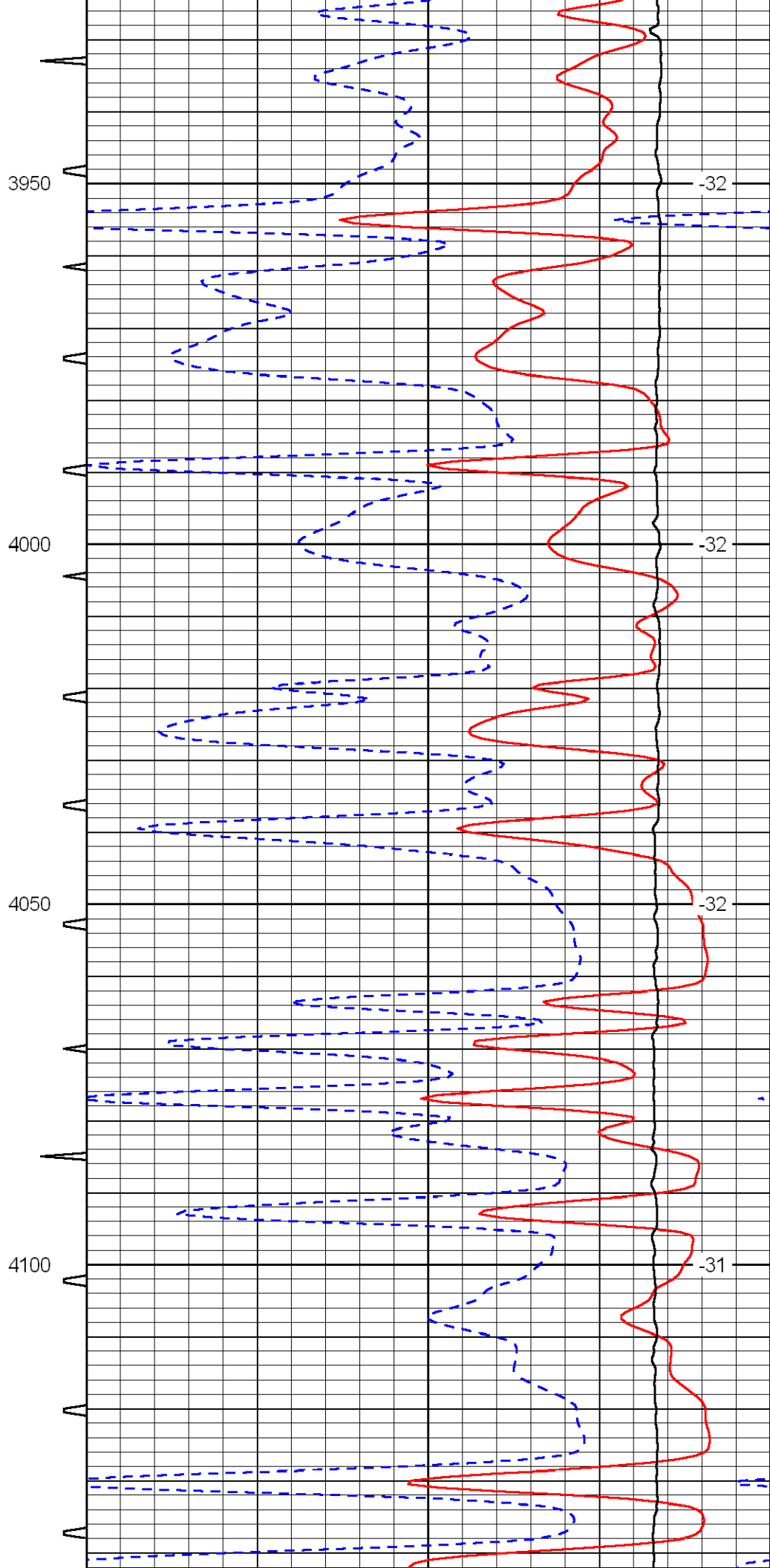
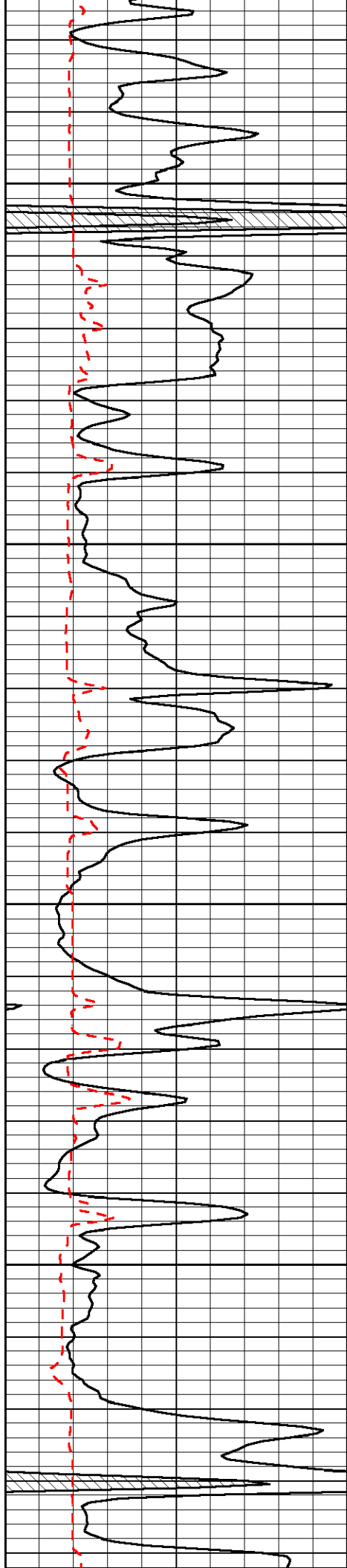


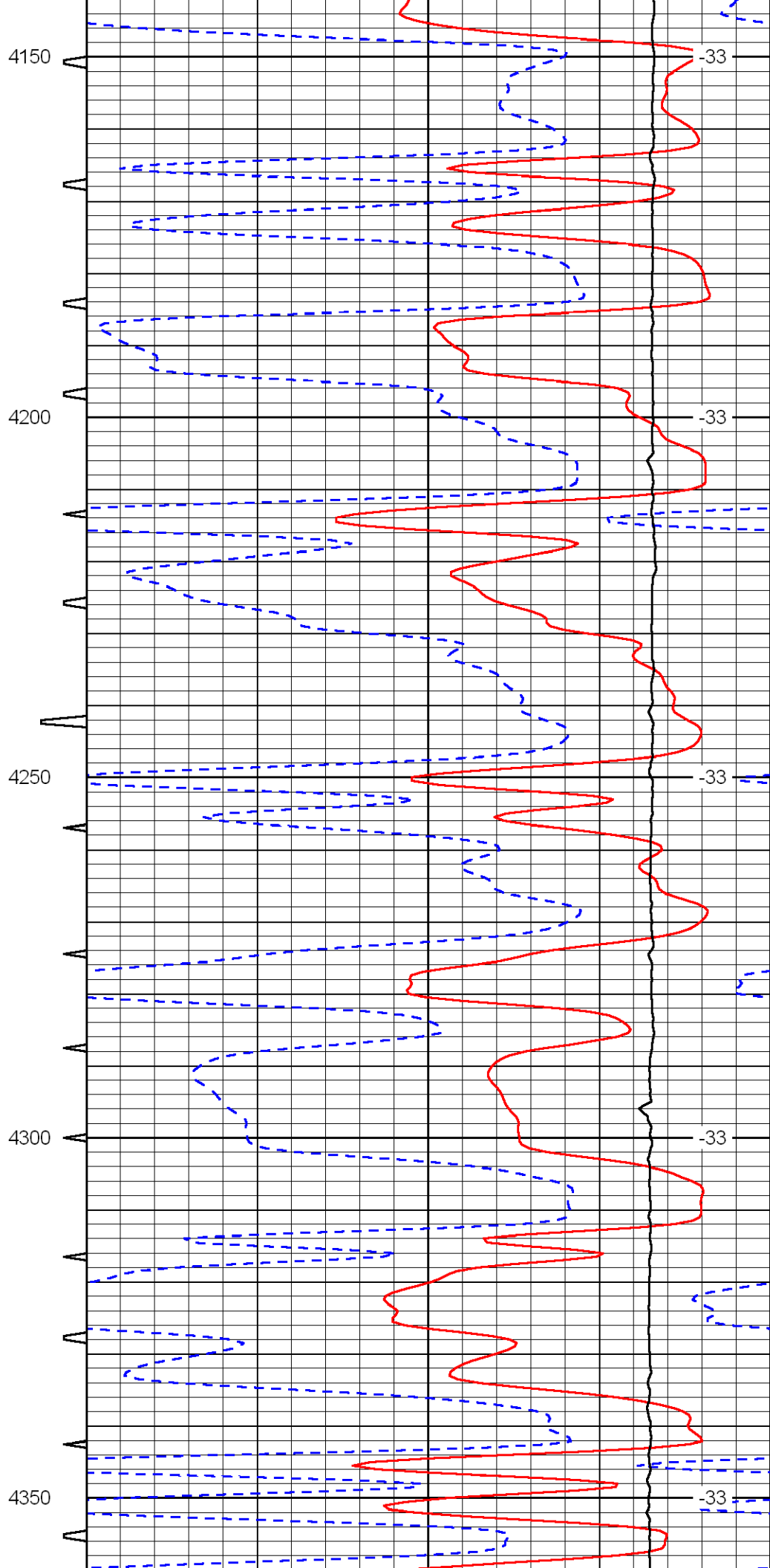
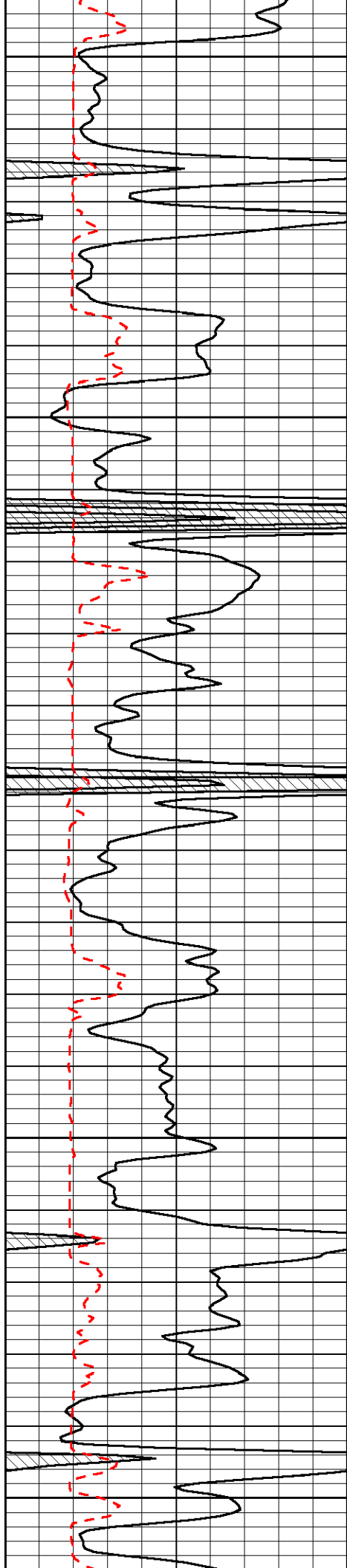


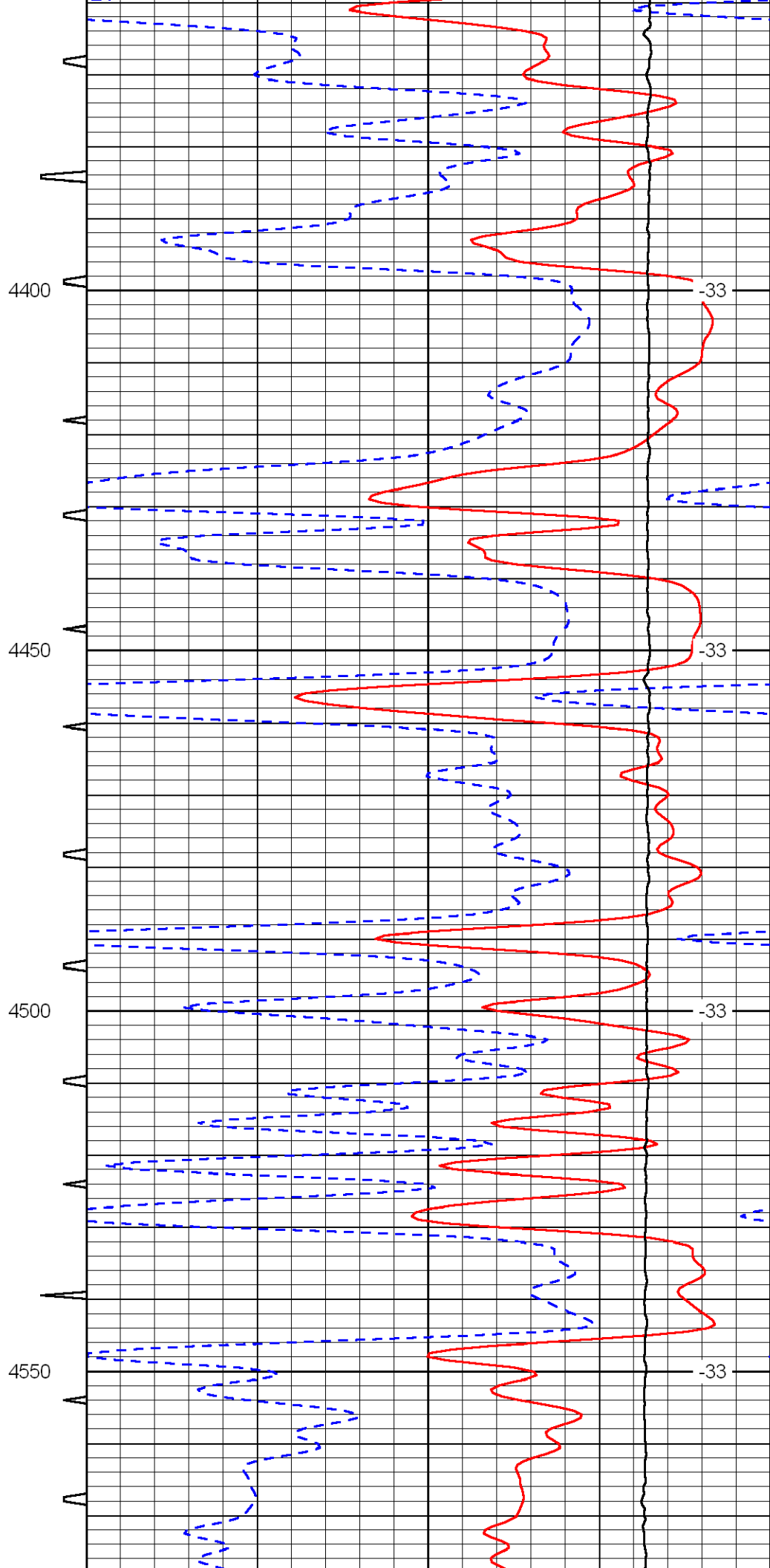
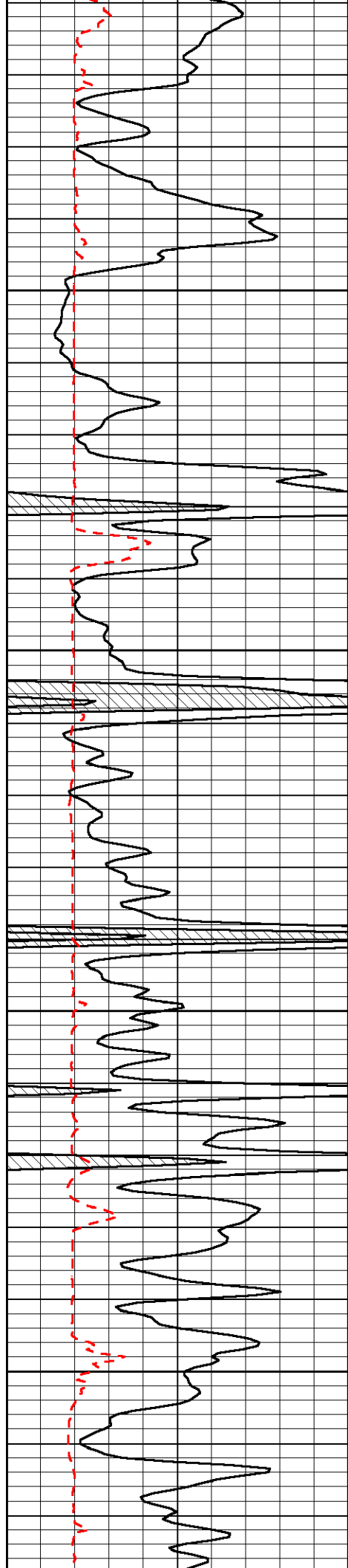


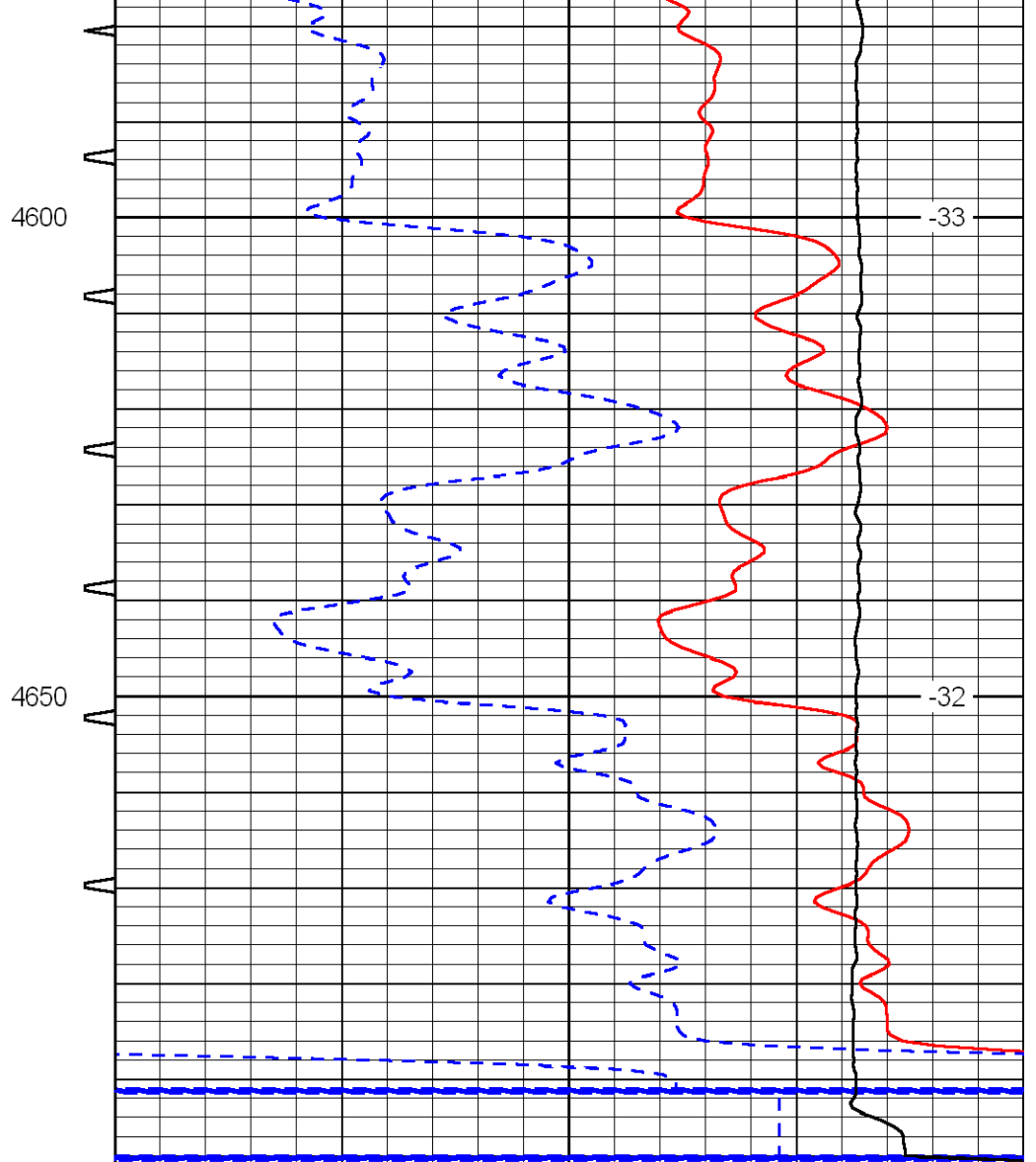
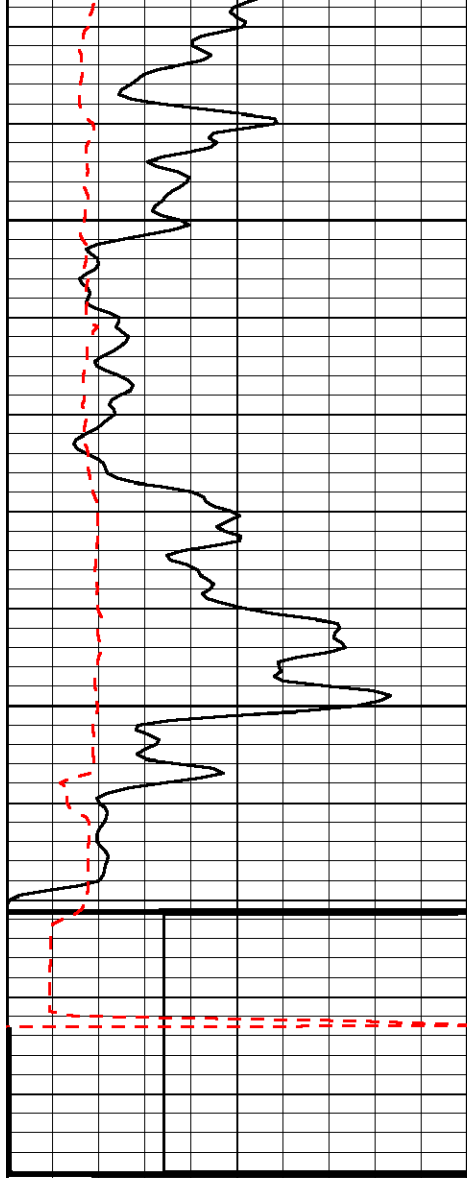












0	Gamma Ray	150	Sonic Int	140	Delta Time (usec/ft)	40
150	Gamma Ray	300	5	0	Sonic Porosity	-10
6	dCAL (GAPI)	16			LTEN (lb)	0
LSPD						