



Microresistivity Log

DIGITAL LOG (785) 625-3858

API No.	15-193-20805-00-00		
Company	Mid-Continent Resources, Inc.		
Well	Moorhous 'B' No. 1-31		
Field	Wildcat		
County	Thomas	State	Kansas
Location	NW - SW - NW - SE 1698' FSL & 2539' FEL		
Sec: 31	Twp: 10 S	Rge: 31 W	Other Services CNL/CDL DIL/BHCS
Permanent Datum	Ground Level	Elevation 2985	Elevation
Log Measured From	Kelly Bushing	9 Ft. Above Perm. Datum	K.B. 2994
Drilling Measured From	Kelly Bushing		D.F. 2985
			G.L. 2985

Date	8/20/2011
Run Number	Two
Depth Driller	4700
Depth Logger	4694
Bottom Logged Interval	4693
Top Log Interval	3650
Casing Driller	8.625 @ 270
Casing Logger	264
Bit Size	7.875
Type Fluid in Hole	Chemical
Salinity, ppm CL	3200
Density / Viscosity	9.1 49
pH / Fluid Loss	10.5 7.2
Source of Sample	Flowline
Rm @ Meas. Temp	0.40 @ 75
Rmf @ Meas. Temp	0.30 @ 75
Rmc @ Meas. Temp	0.54 @ 75
Source of Rmf / Rmc	Charts
Rm @ BHT	0.24 @ 123
Operating Rig Time	5 Hours
Max Rec. Temp. F	123
Equipment Number	17
Location	Hays
Recorded By	B. Becker
Witnessed By	Jeff Lawler

<<< Fold Here >>>

All interpretations are opinions based on inferences from electrical or other measurements and we cannot and do not guarantee the accuracy or correctness of any interpretation, and we shall not, except in the case of gross or willful negligence on our part, be liable or responsible for any loss, costs, damages, or expenses incurred or sustained by anyone resulting from any interpretation made by any of our officers, agents or employees. These interpretations are also subject to our general terms and conditions set out in our current Price Schedule.

Comments

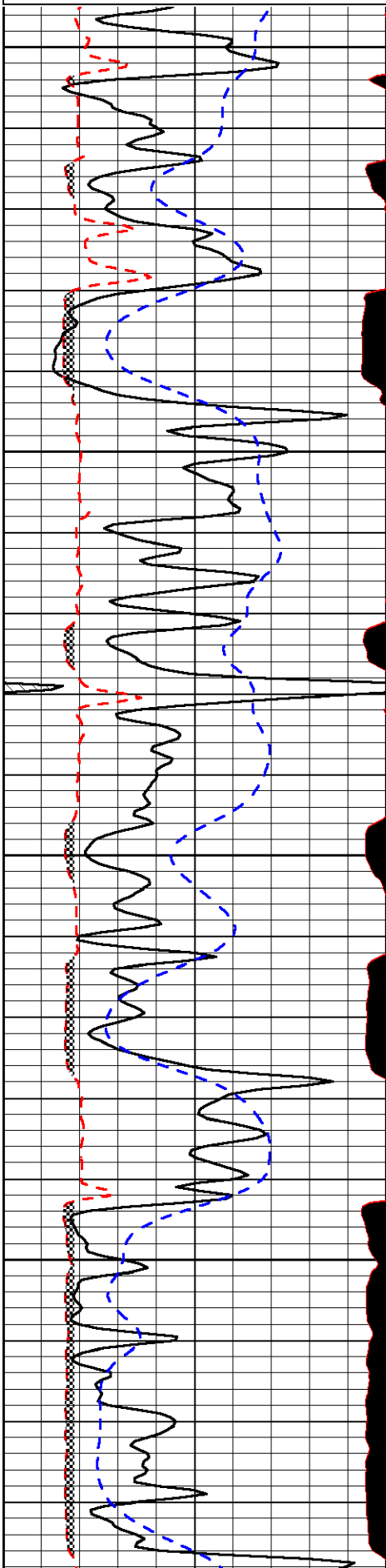
Thank you for using Log-Tech, Inc.
(785) 625-3858

Oakley, Ks; (Mitten's Truck Stop)
1 West; 1 North; 1 East; 3/4 North;
West Into (bottom of hill)

Database File: midconhd.db
 Dataset Pathname: DIL/mconstk
 Presentation Format: micro
 Dataset Creation: Sat Aug 20 23:36:49 2011
 Charted by: Depth in Feet scaled 1:240

0	Gamma Ray	150
6	MCAL (GAPI)	16
2.875	Mud Cake (GAPI)	7.875
-200	SP	0

0	Micro Inverse 1 X 1	40
0	Micro Normal 2"	40
10000	Line Weight	0
		LSPD

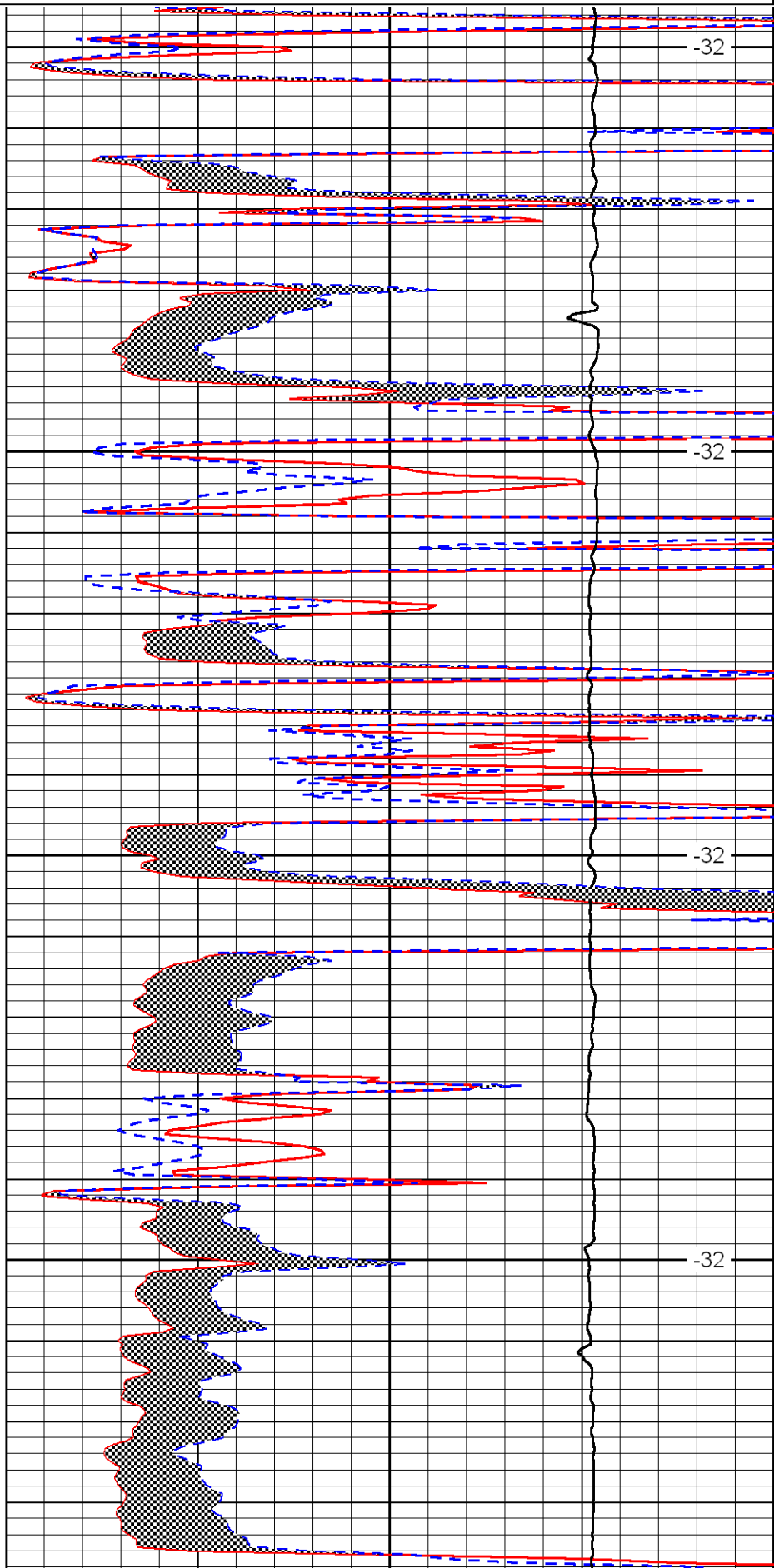


3650

3700

3750

3800

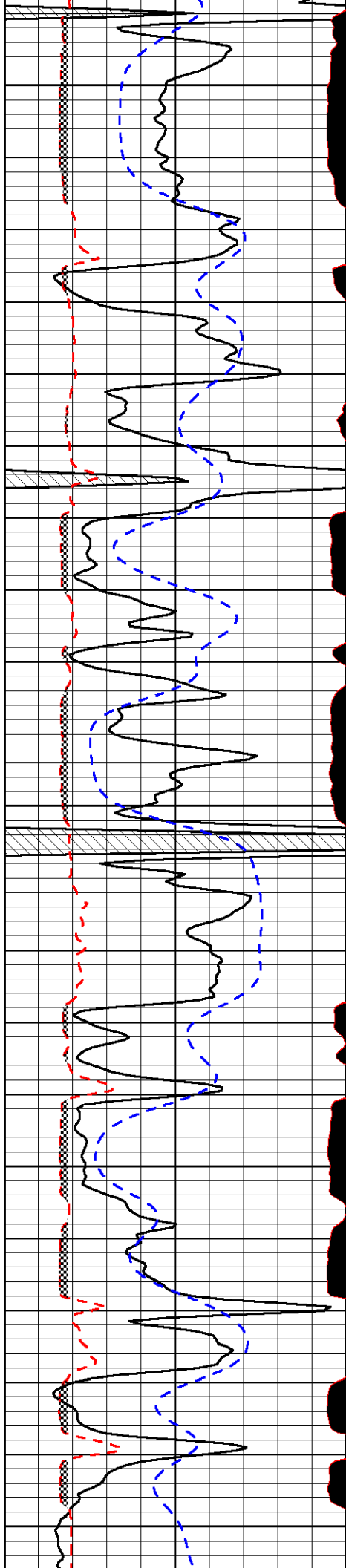


-32

-32

-32

-32



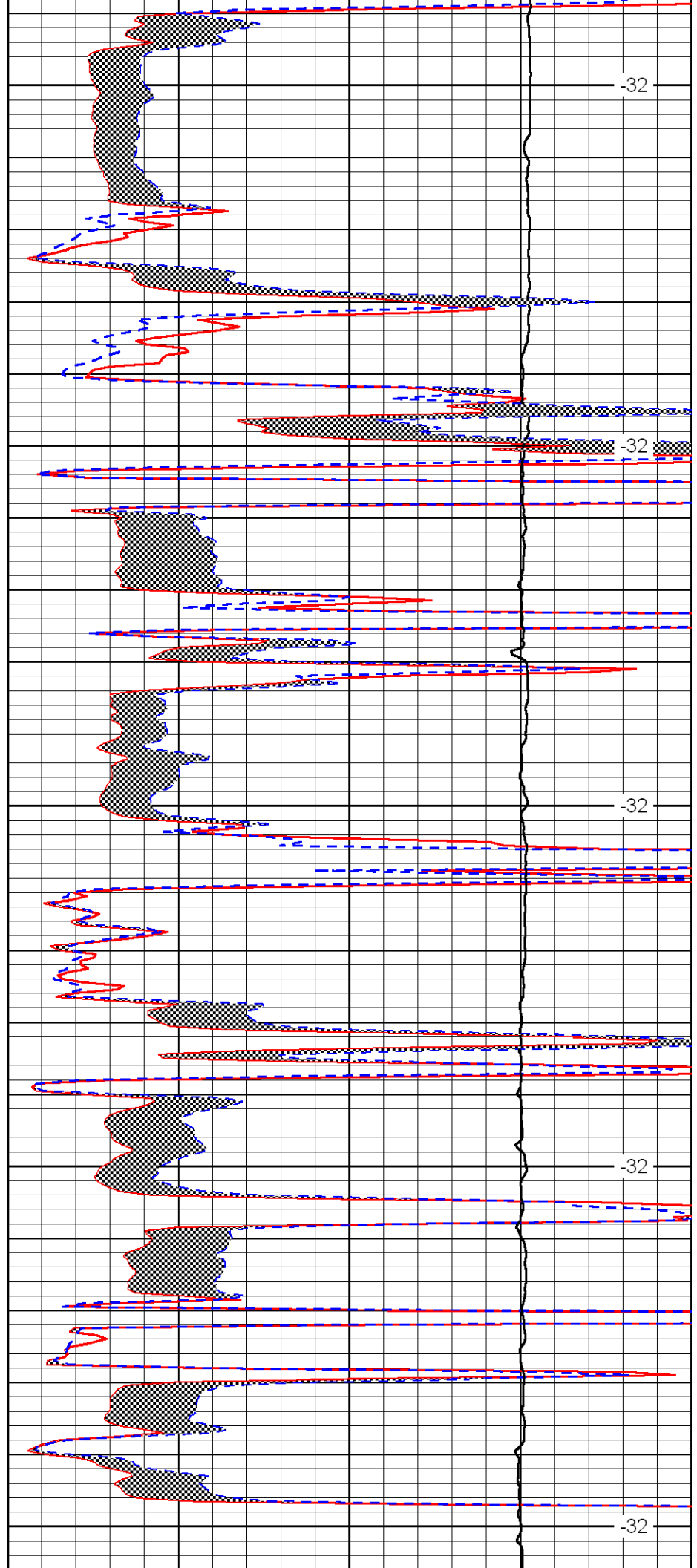
3850

3900

3950

4000

4050



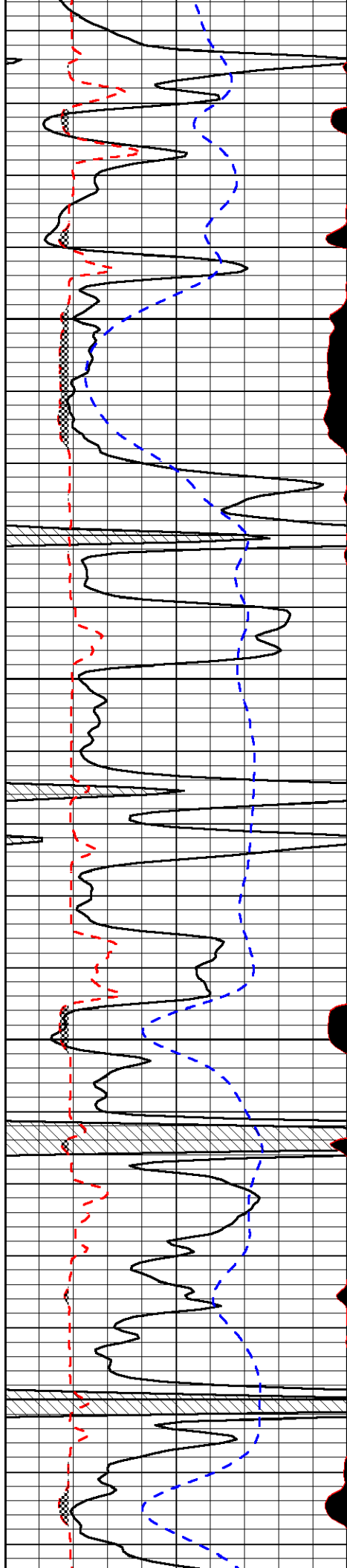
-32

-32

-32

-32

-32

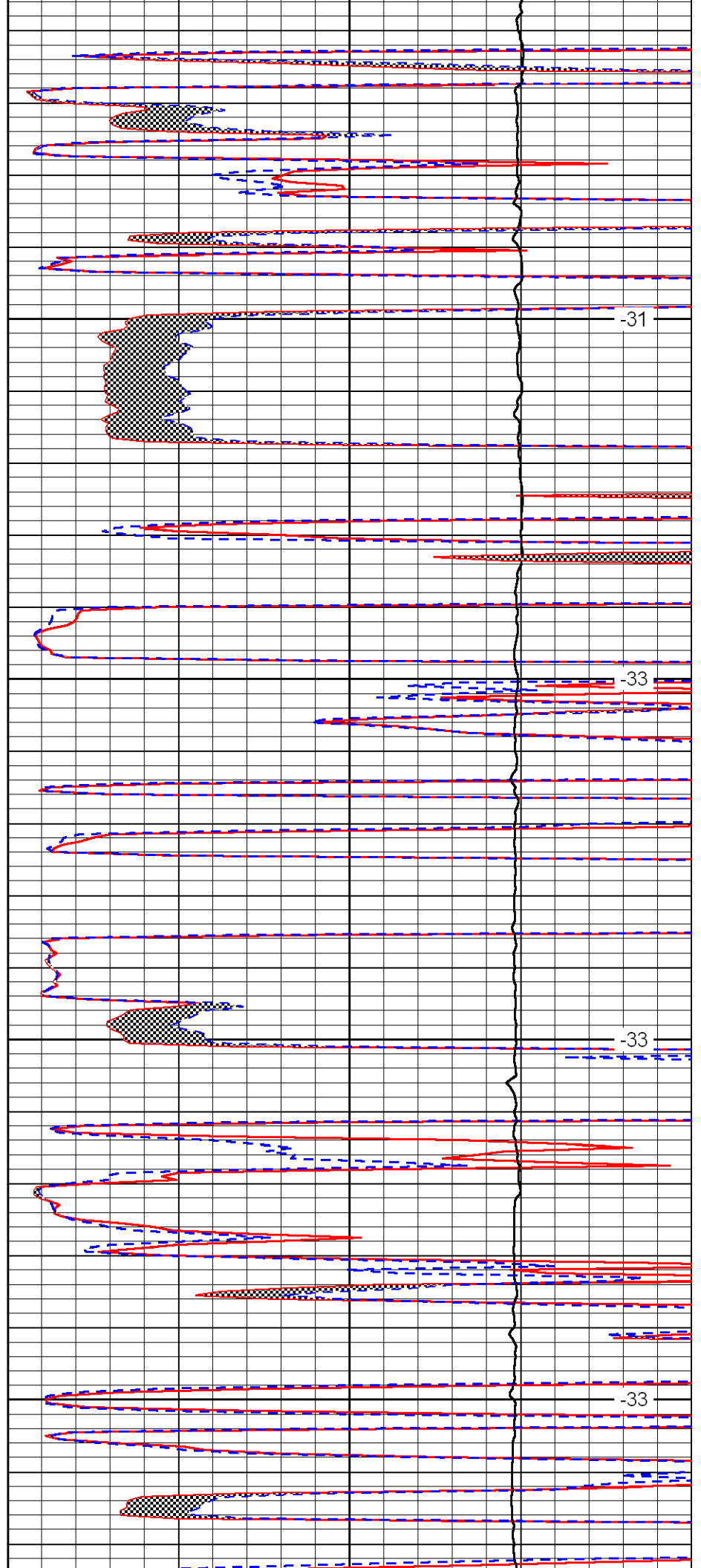


4100

4150

4200

4250

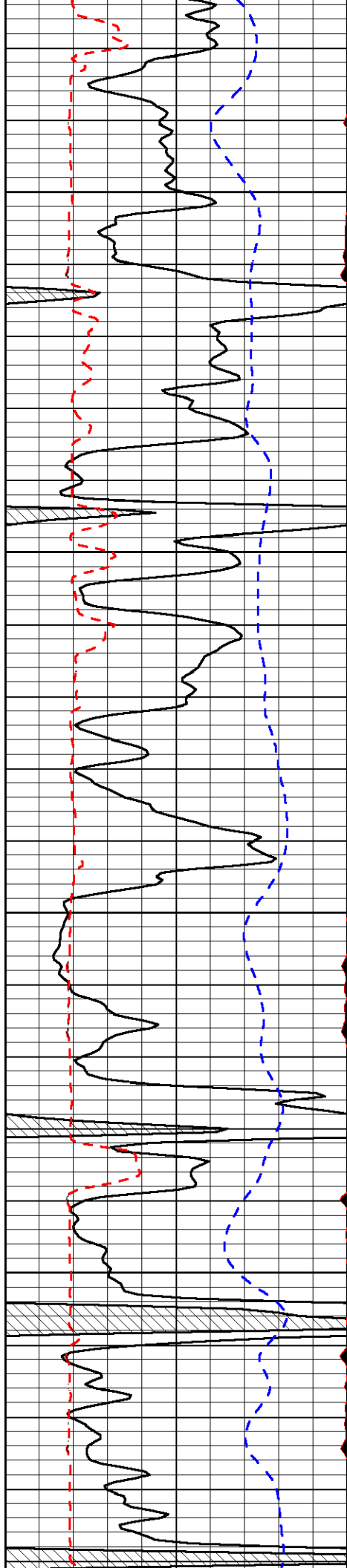


-31

-33

-33

-33

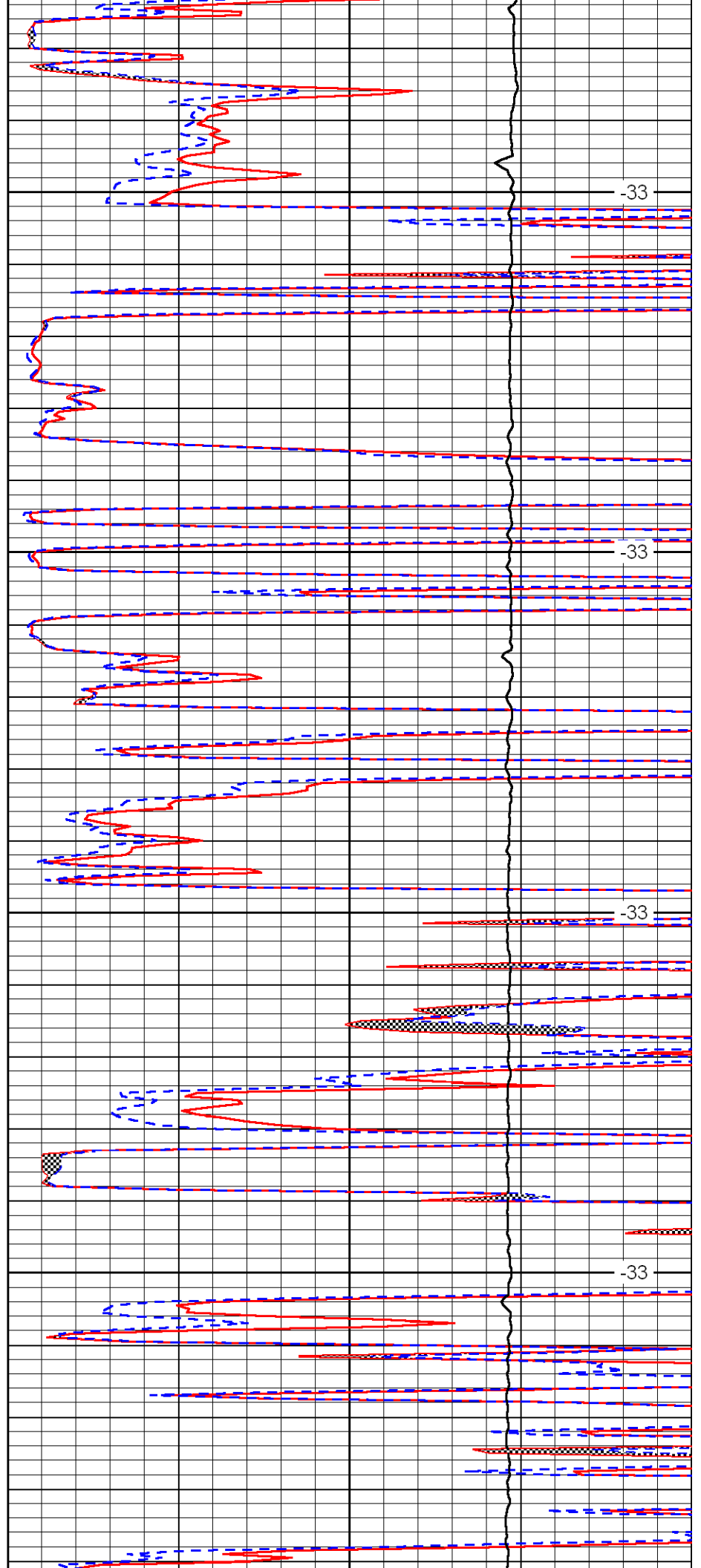


4300

4350

4400

4450

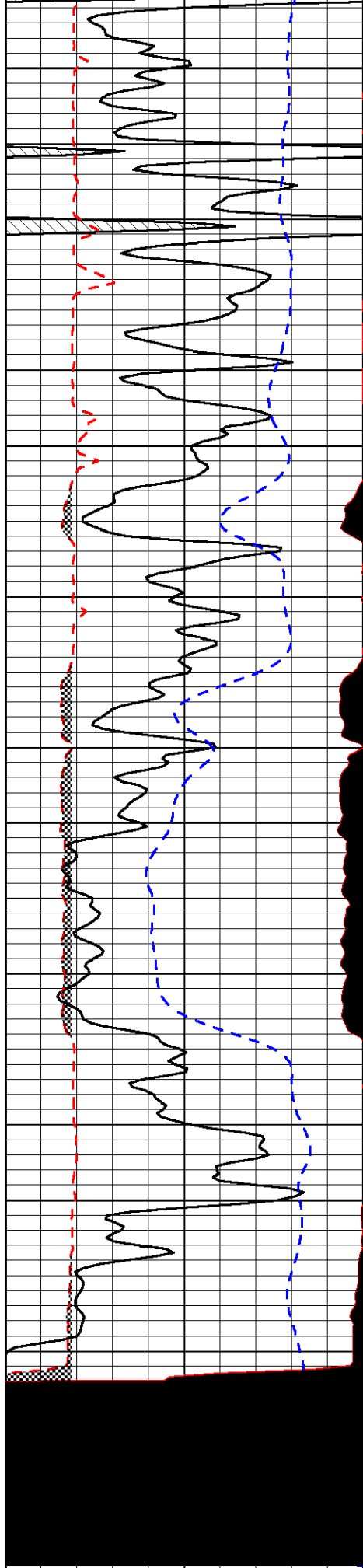


-33

-33

-33

-33



4500

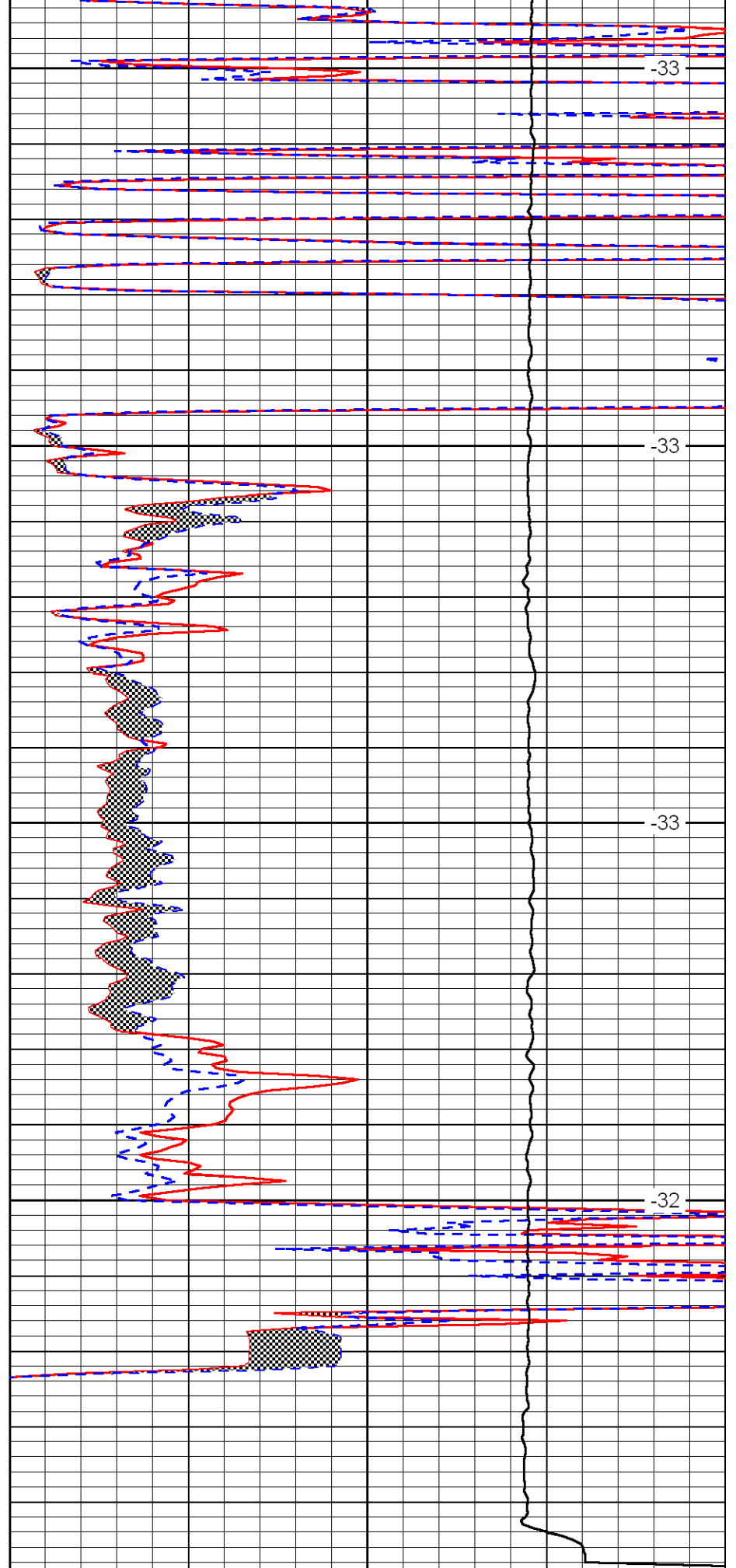
4550

4600

4650

0 Gamma Ray 150

6 MCAL (GAPI) 16



-33

-33

-33

-32

0 Micro Inverse 1 X 1 40

0 Micro Normal 2'' 40

2.875	Mud Cake (GAPI)	7.875
-200	SP	0

10000	Line Weight	0
		LSPD