



Dual Compensated Porosity Log

DIGITAL LOG (785) 625-3858

API No. 15-193-20805-00-00

Company **Mid-Continent Resources, Inc.**
 Well **Moorhous 'B' No. 1-31**
 Field **Wildcat**
 County **Thomas** State **Kansas**

Location **NW - SW - NW - SE**
1698' FSL & 2539' FEL

Sec: **31** Twp: **10 S** Rge: **31 W**

Other Services
 DIL
 MEL/BHCS

Permanent Datum **Ground Level** Elevation **2985**
 Log Measured From **Kelly Bushing** 9 Ft. Above Perm. Datum
 Drilling Measured From **Kelly Bushing**

K.B. 2994
 D.F. G.L. 2985

Date **8/20/2011**

Run Number **One**

Type Log **CNL / CDL**

Depth Driller **4700**

Depth Logger **4694**

Bottom Logged Interval **4673**

Top Logged Interval **3650**

Type Fluid In Hole **Chemical**

Salinity, PPM CL **3200**

Density **9.1**

Level **Full**

Max. Rec. Temp. F **123**

Operating Rig Time **5 Hours**

Equipment -- Location **17 Hays**

Recorded By **B. Becker**

Witnessed By **Jeff Lawler**

Borehole Record				Casing Record			
Run No	Bit	From	To	Size	Wgt.	From	To
One	12.25	00	270	8.625	23#	00	270
Two	7.875	270	TD				

<<< Fold Here >>>

All interpretations are opinions based on inferences from electrical or other measurements and we cannot and do not guarantee the accuracy or correctness of any interpretation, and we shall not, except in the case of gross or willful negligence on our part, be liable or responsible for any loss, costs, damages, or expenses incurred or sustained by anyone resulting from any interpretation made by any of our officers, agents or employees. These interpretations are also subject to our general terms and conditions set out in our current Price Schedule.

Comments

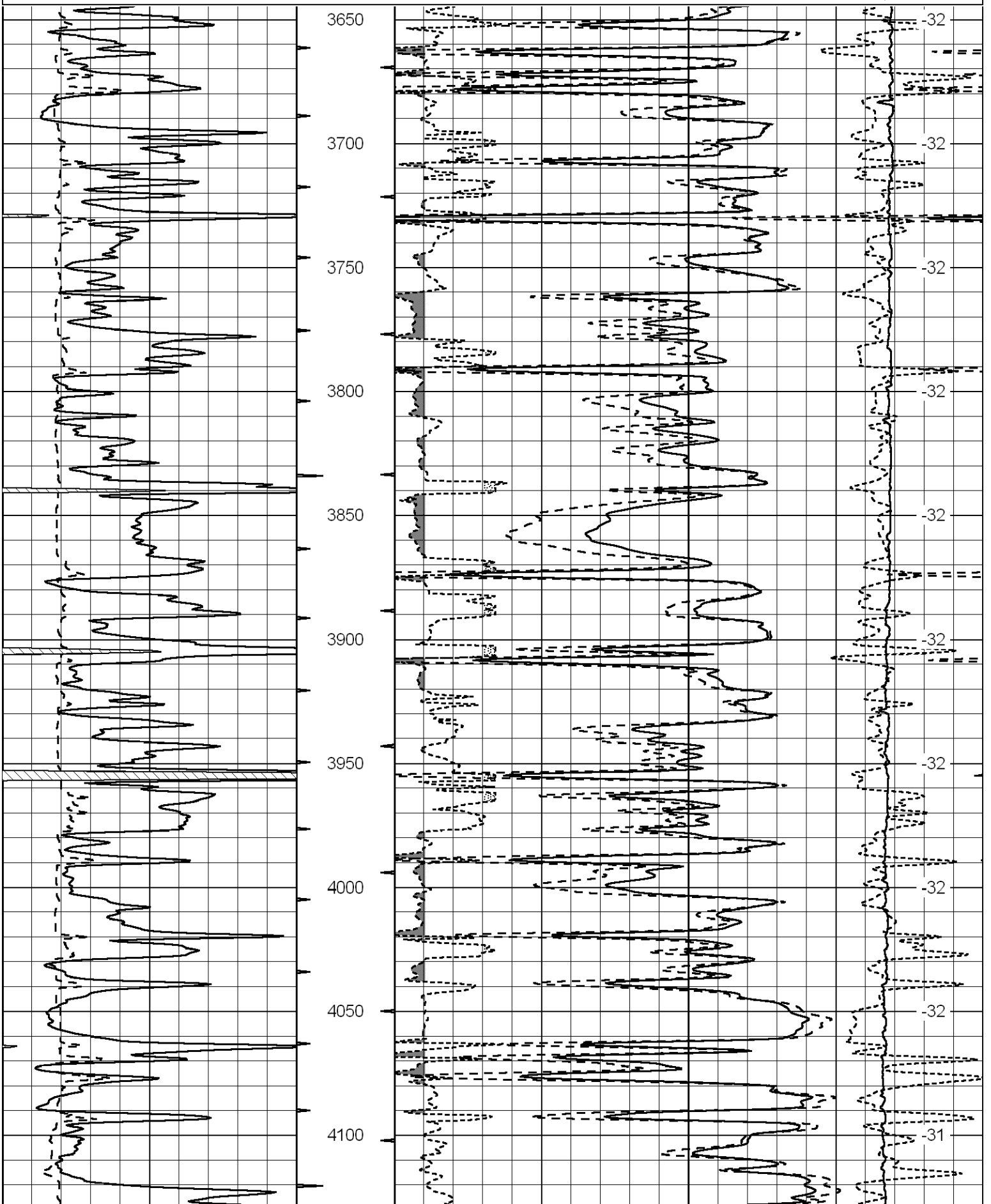
Thank you for using Log-Tech, Inc.
 (785) 625-3858

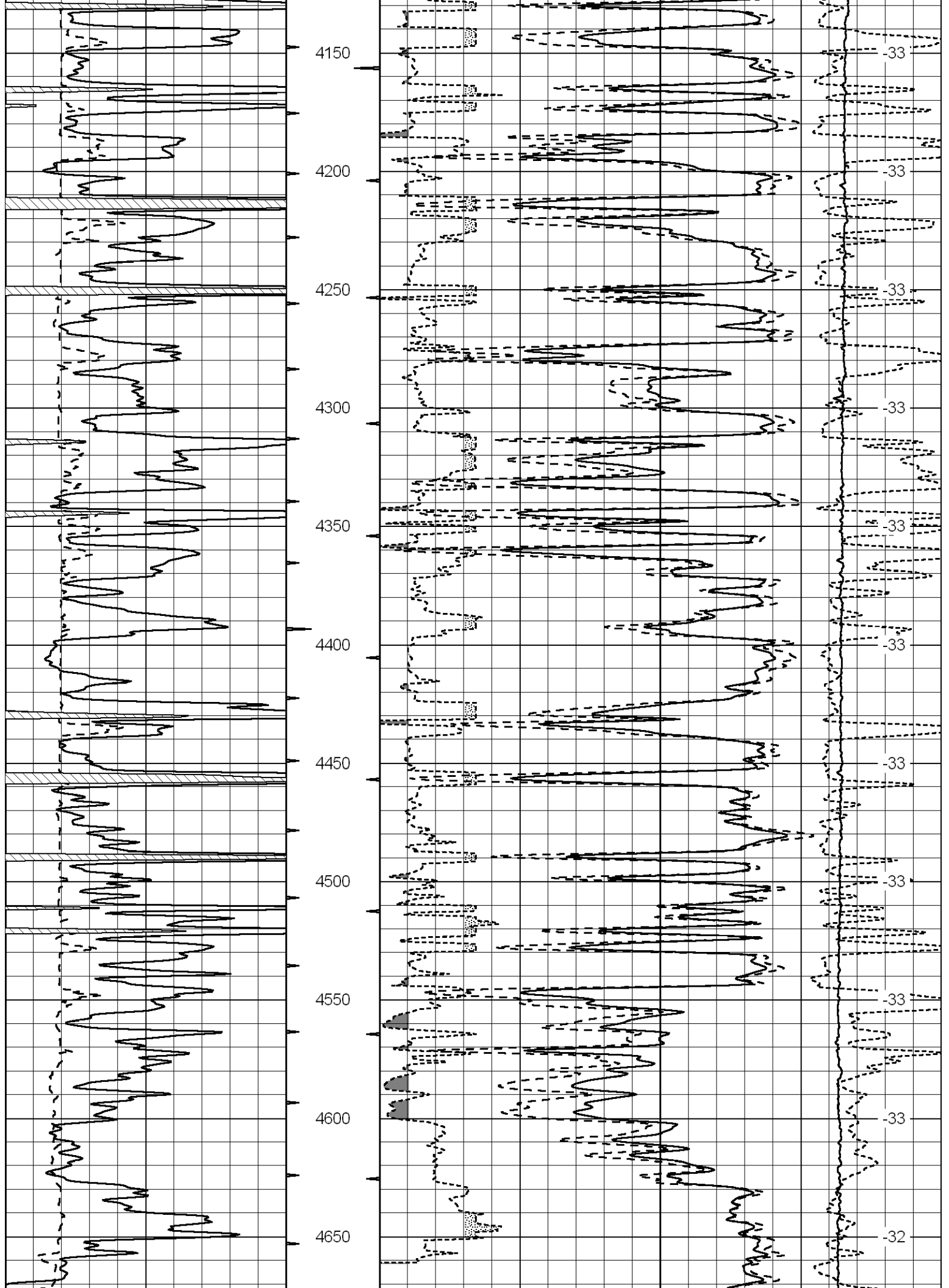
Oakley, Ks; (Mitten's Truck Stop)
 1 West; 1 North; 1 East; 3/4 North;
 West Into (bottom of hill)

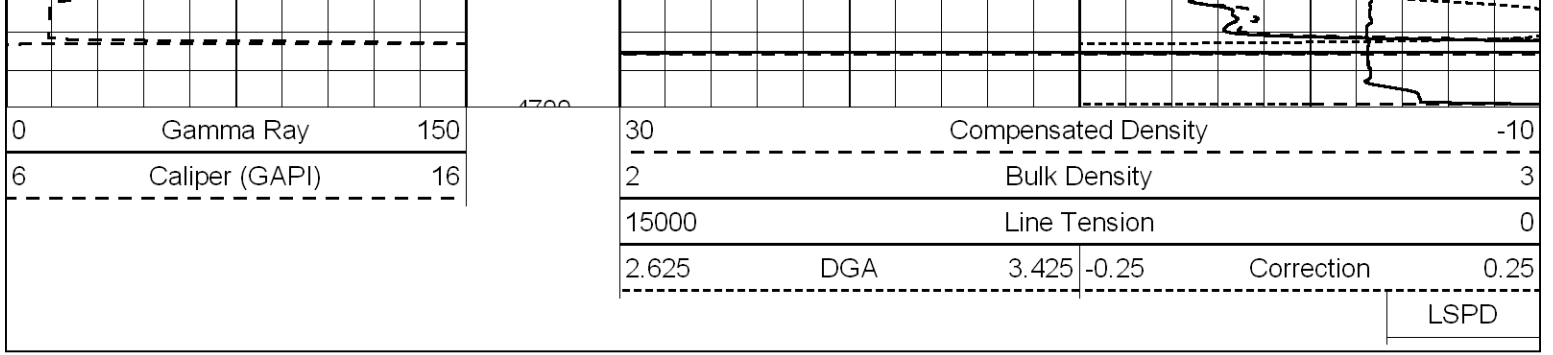
Database File: midconhd.db
 Dataset Pathname: DIL/mconstk
 Presentation Format: cdl
 Dataset Creation: Sat Aug 20 23:36:49 2011
 Charted by: Depth in Feet scaled 1:600

0	Gamma Ray	150
6	Caliper (GAPI)	16

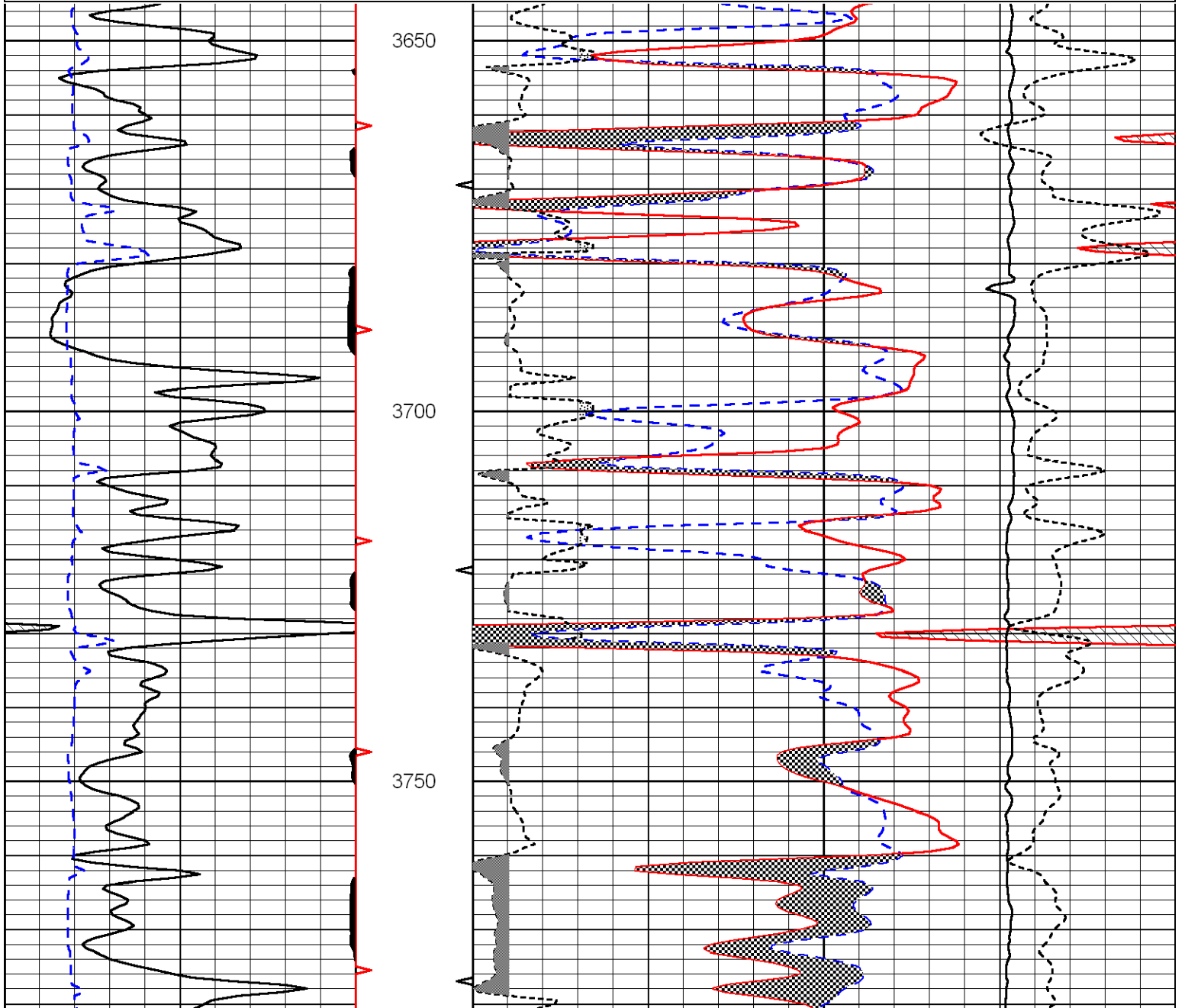
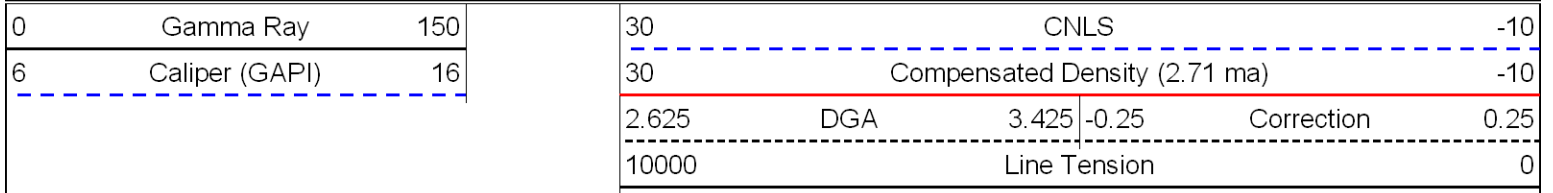
30	Compensated Density		-10
2	Bulk Density		3
15000	Line Tension		0
2.625	DGA	3.425	-0.25
Correction			0.25
LSPD			

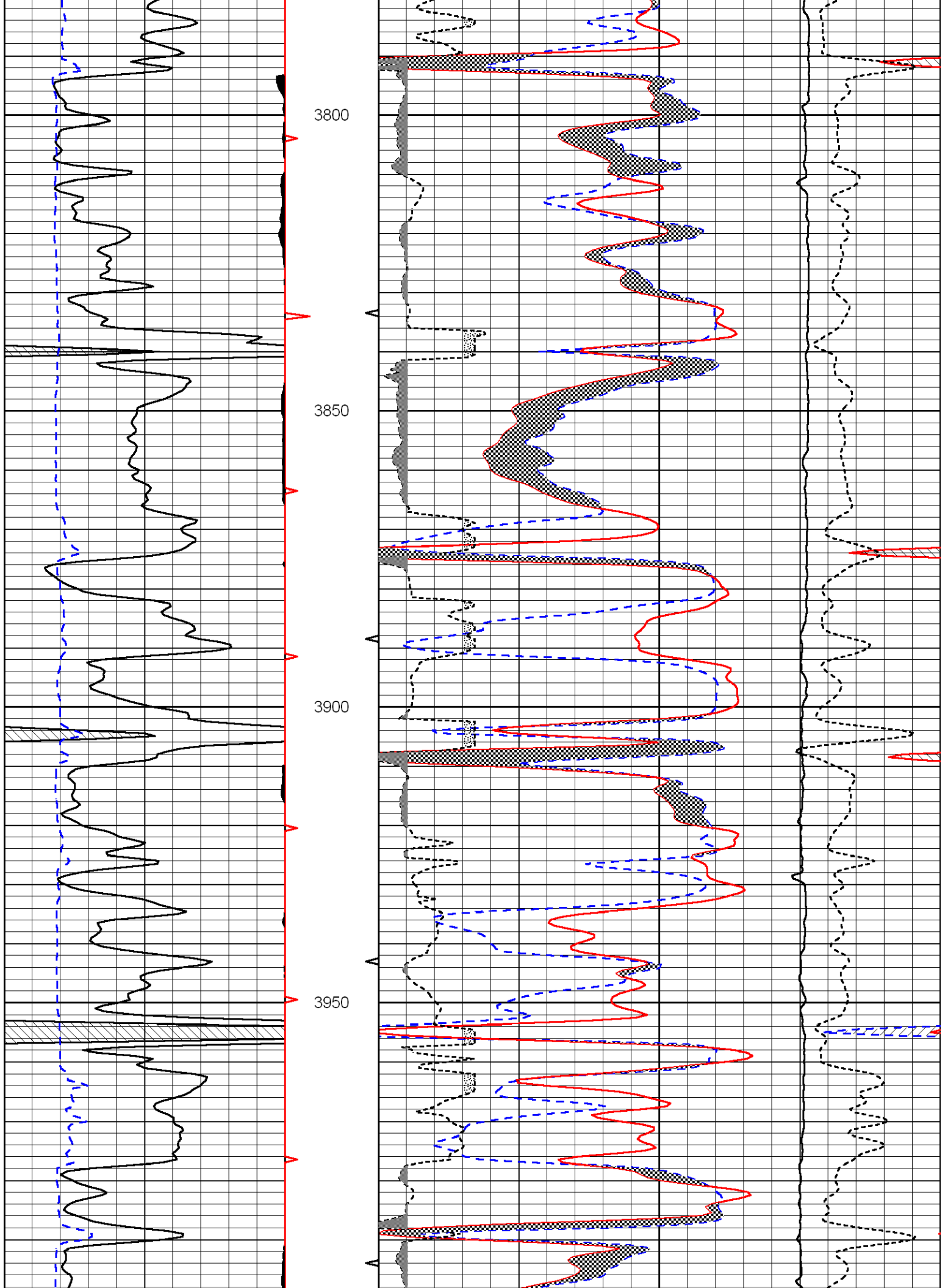




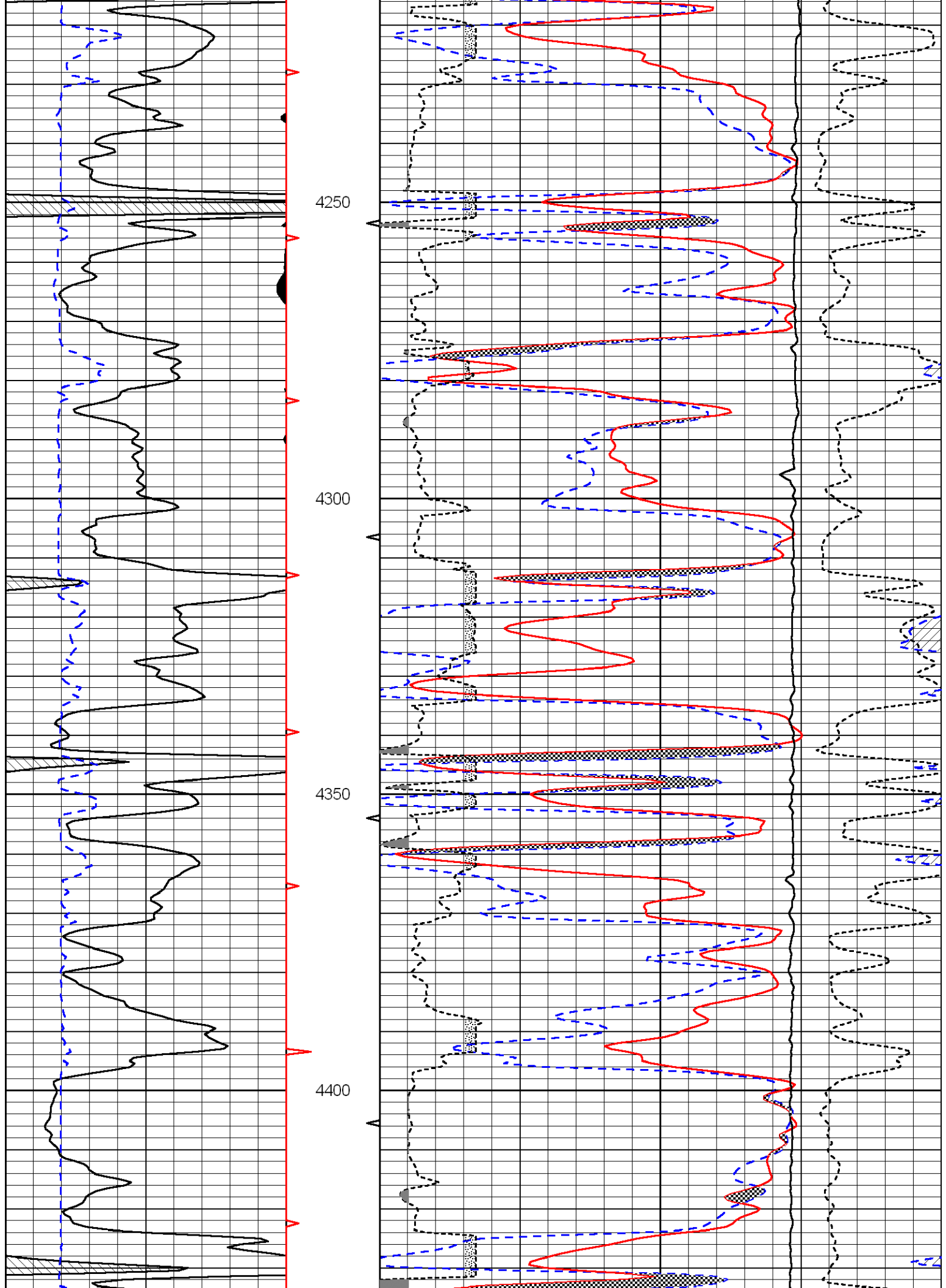


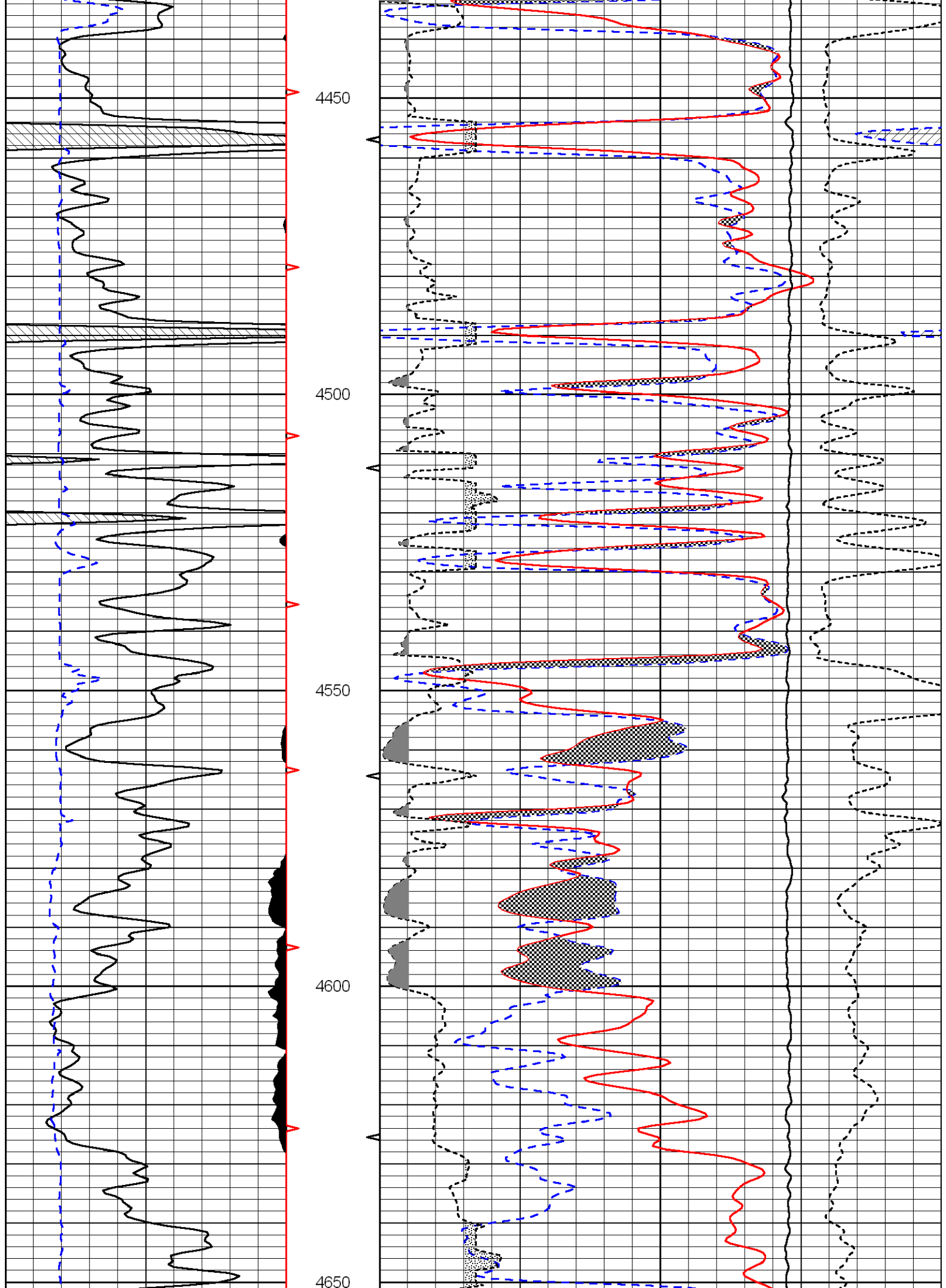
Database File: midconhd.db
 Dataset Pathname: DIL/mconstk
 Presentation Format: cndlspec
 Dataset Creation: Sat Aug 20 23:36:49 2011
 Charted by: Depth in Feet scaled 1:240

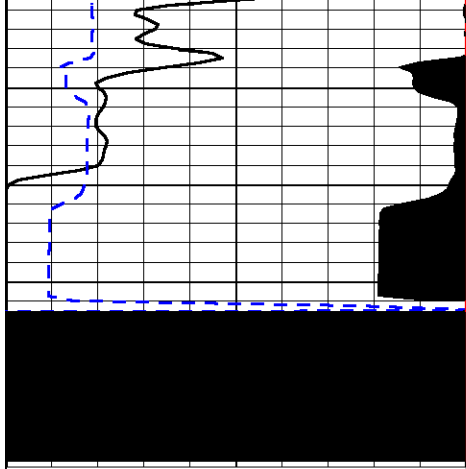




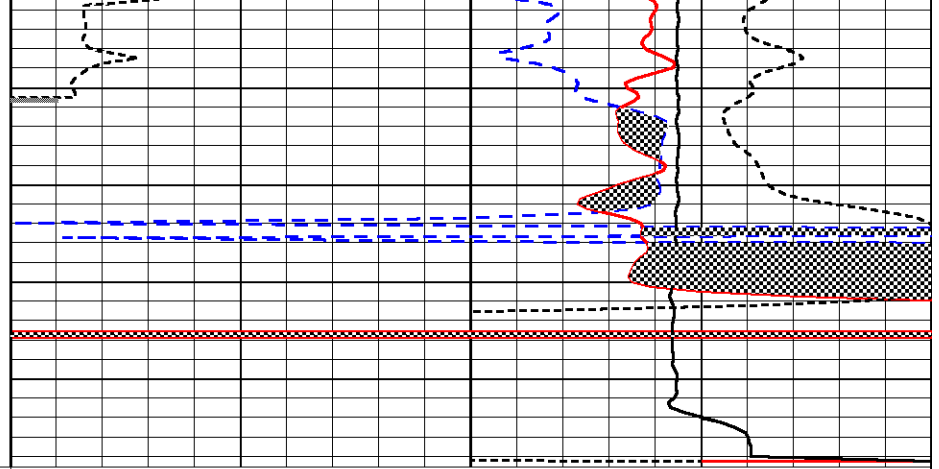








0	Gamma Ray	150
6	Caliper (GAPI)	16



30	CNLS		-10
30	Compensated Density (2.71 ma)		-10
2.625	DGA	3.425	-0.25
			Correction
10000	Line Tension		0