



Dual Induction Log

DIGITAL LOG (785) 625-3858

API No.	15-193-20805-00-00	
Company	Mid-Continent Resources, Inc.	
Well	Moorhous 'B' No. 1-31	
Field	Wildcat	
County	Thomas	State Kansas
Location	NW - SW - NW - SE 1698' FSL & 2539' FEL	
Sec: 31	Twp: 10 S	Rge: 31 W
Other Services	CNL/CDL MEL/BHCS	

Permanent Datum	Ground Level	Elevation 2985
Log Measured From	Kelly Bushing	9 Ft. Above Perm. Datum
Drilling Measured From	Kelly Bushing	
Date	8/20/2011	
Run Number	One	
Depth Driller	4700	
Depth Logger	4694	
Bottom Logged Interval	4693	
Top Log Interval	250	
Casing Driller	8.625 @ 270	
Casing Logger	264	
Bit Size	7.875	
Type Fluid in Hole	Chemical	
Salinity, ppm CL	3200	
Density / Viscosity	9.1	49
pH / Fluid Loss	10.5	7.2
Source of Sample	Flowline	
Rm @ Meas. Temp	0.40 @	75
Rmf @ Meas. Temp	0.30 @	75
Rmc @ Meas. Temp	0.54 @	75
Source of Rmf / Rmc	Charts	
Rm @ BHT	0.24 @	123
Operating Rig Time	5 Hours	
Max Rec. Temp. F	123	
Equipment Number	17	
Location	Hays	
Recorded By	B. Becker	
Witnessed By	Jeff Lawler	

<<< Fold Here >>>

All interpretations are opinions based on inferences from electrical or other measurements and we cannot and do not guarantee the accuracy or correctness of any interpretation, and we shall not, except in the case of gross or willful negligence on our part, be liable or responsible for any loss, costs, damages, or expenses incurred or sustained by anyone resulting from any interpretation made by any of our officers, agents or employees. These interpretations are also subject to our general terms and conditions set out in our current Price Schedule.

Comments

Thank you for using Log-Tech, Inc.
 (785) 625-3858

Oakley, Ks; (Mitten's Truck Stop)
 1 West; 1 North; 1 East; 3/4 North;
 West Into (bottom of hill)

Database File: midconhd.db
 Dataset Pathname: DIL/mconstk
 Presentation Format: dil2in
 Dataset Creation: Sat Aug 20 23:36:49 2011
 Charted by: Depth in Feet scaled 1:600

0 Gamma Ray 150
-200 SP 0

0 Shallow Resistivity 50
0 Deep Resistivity 50

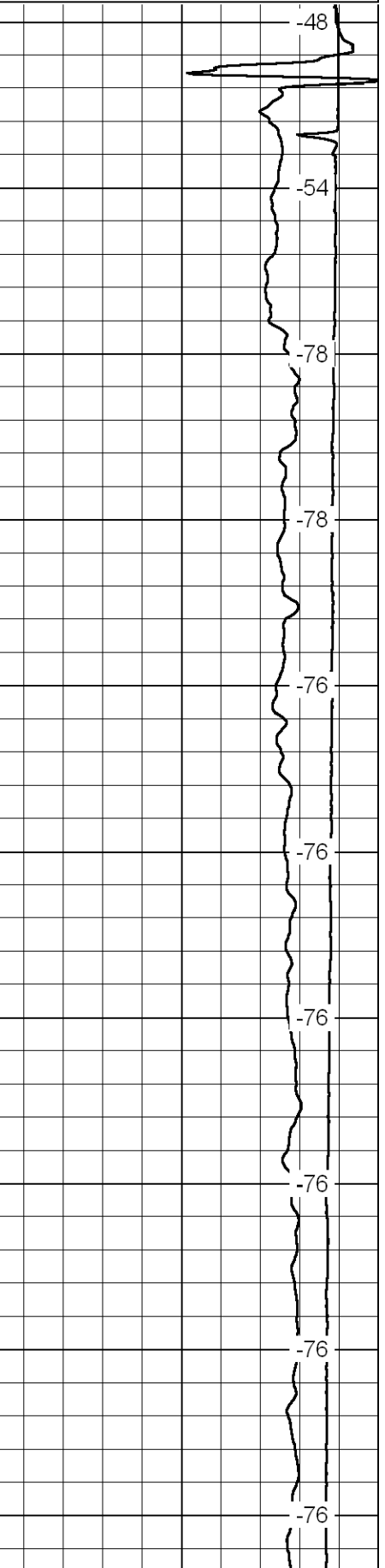
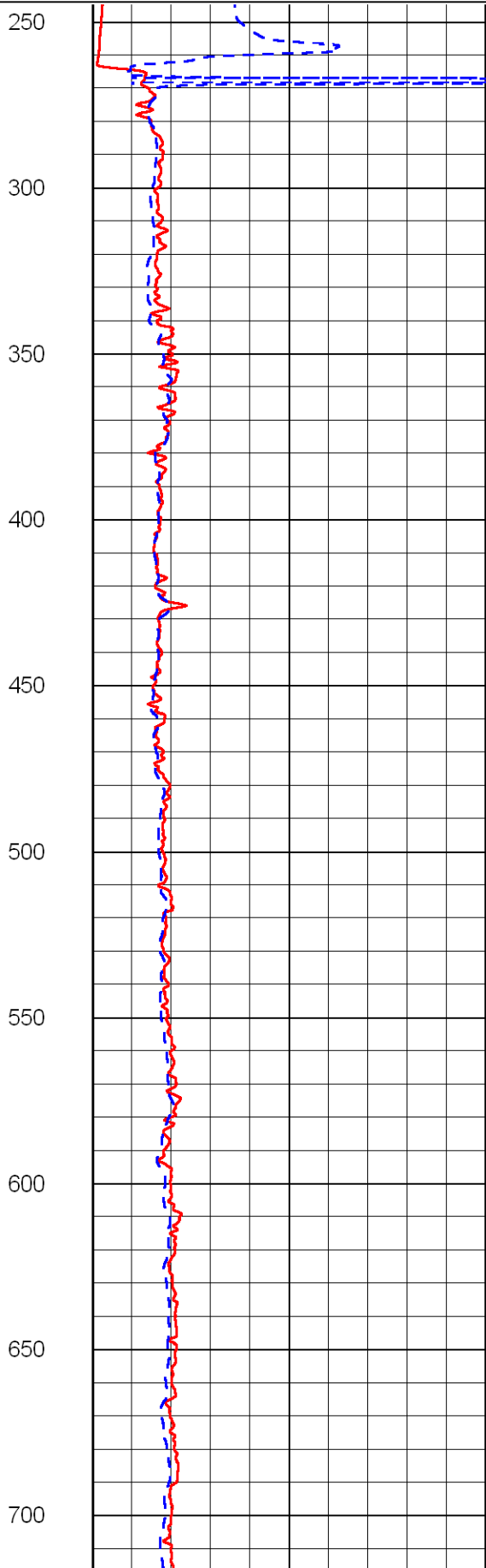
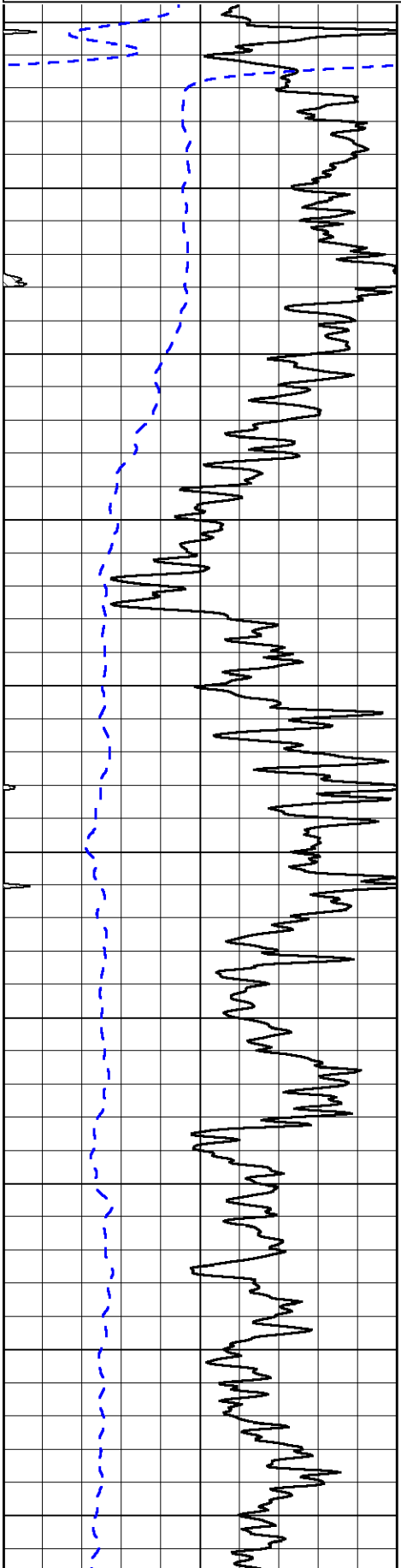
LSPD

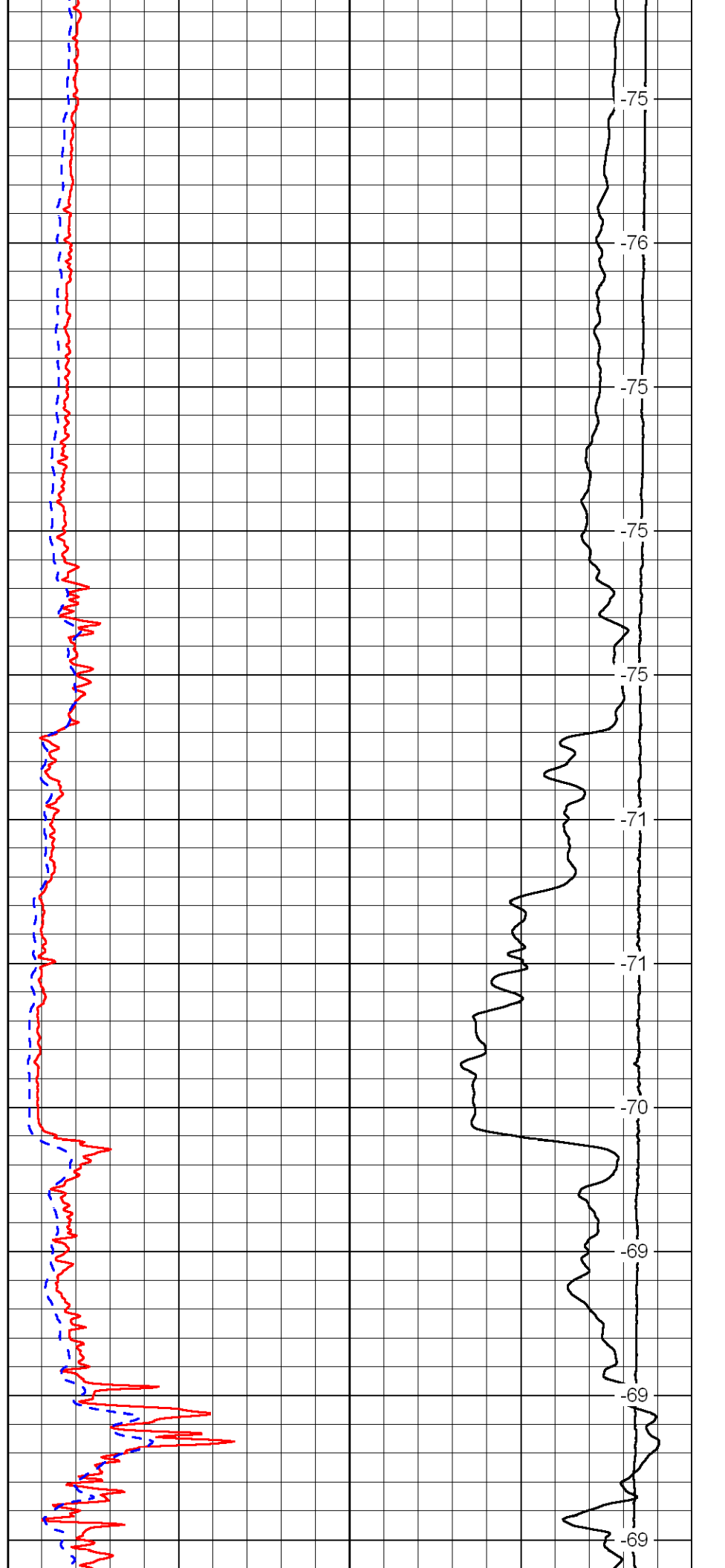
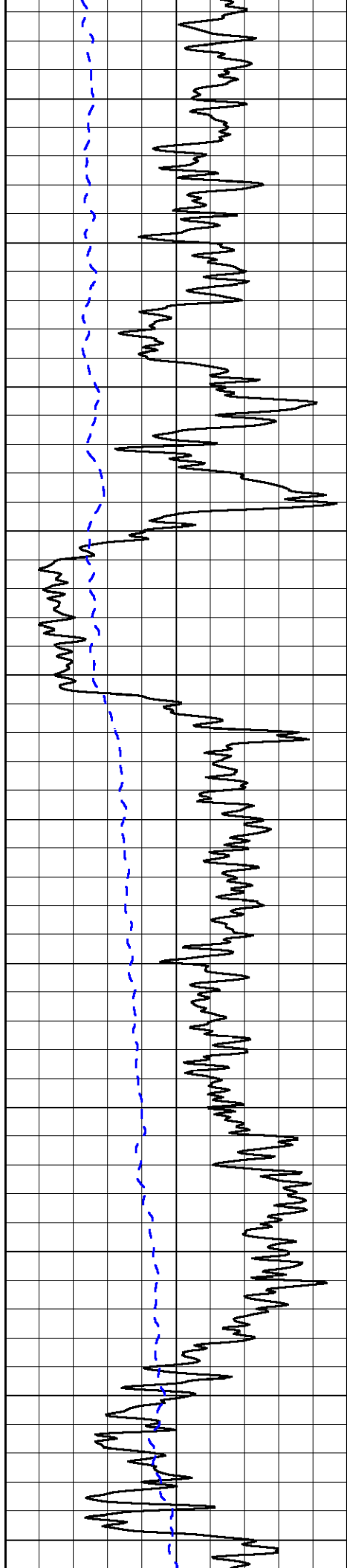
1000 Conductivity 0

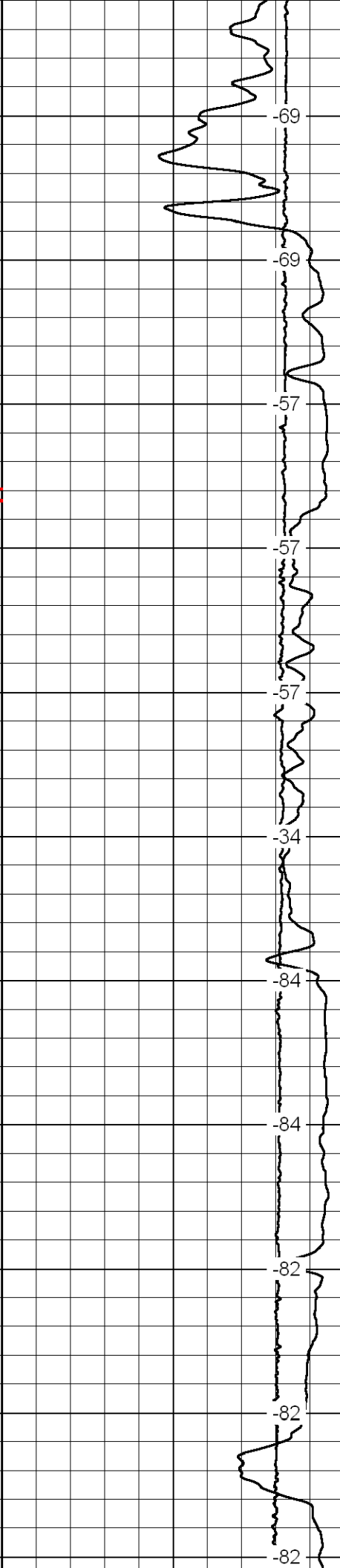
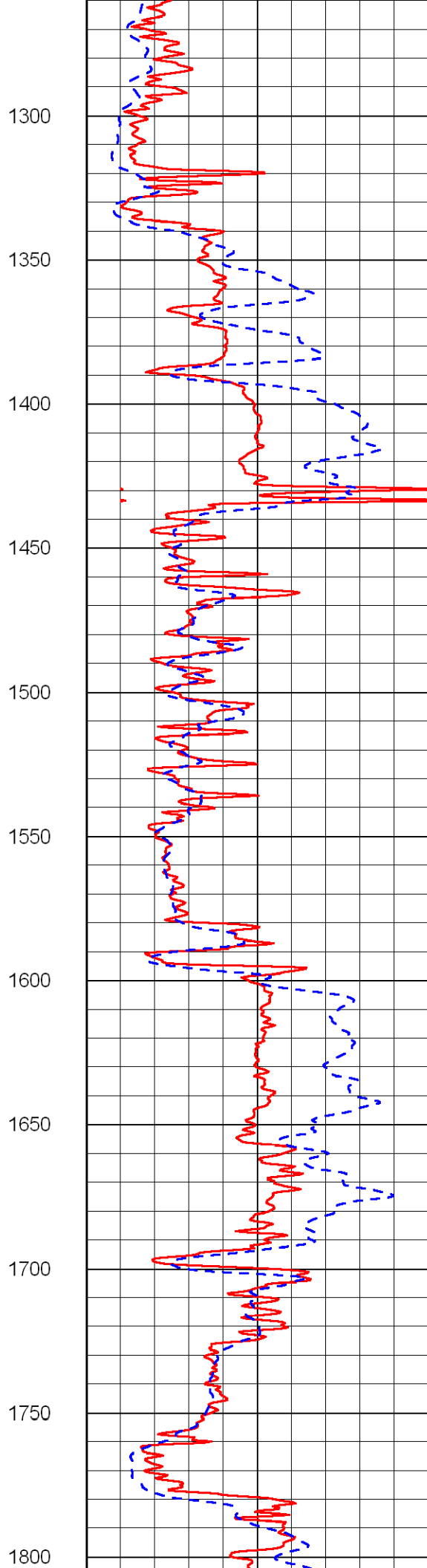
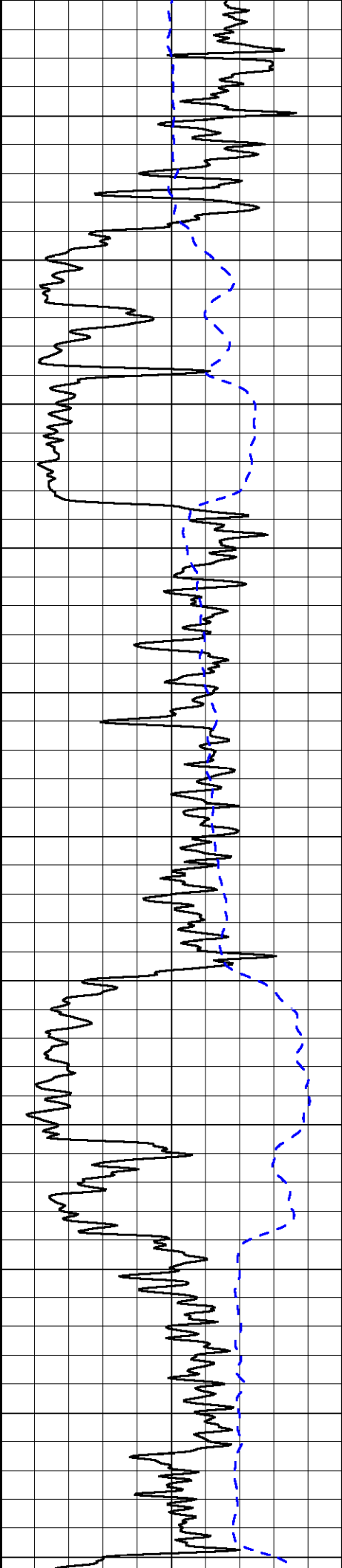
15000 Line Tension 0

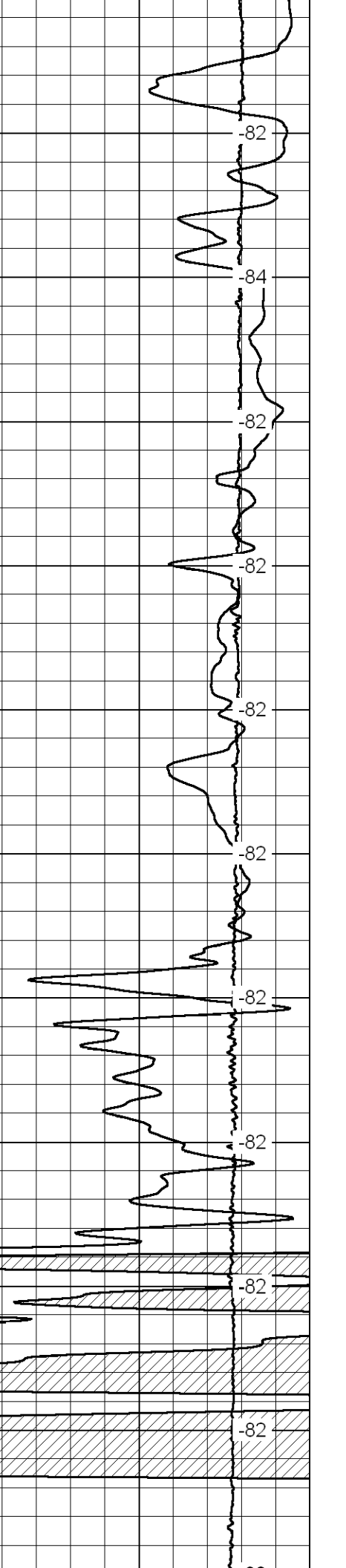
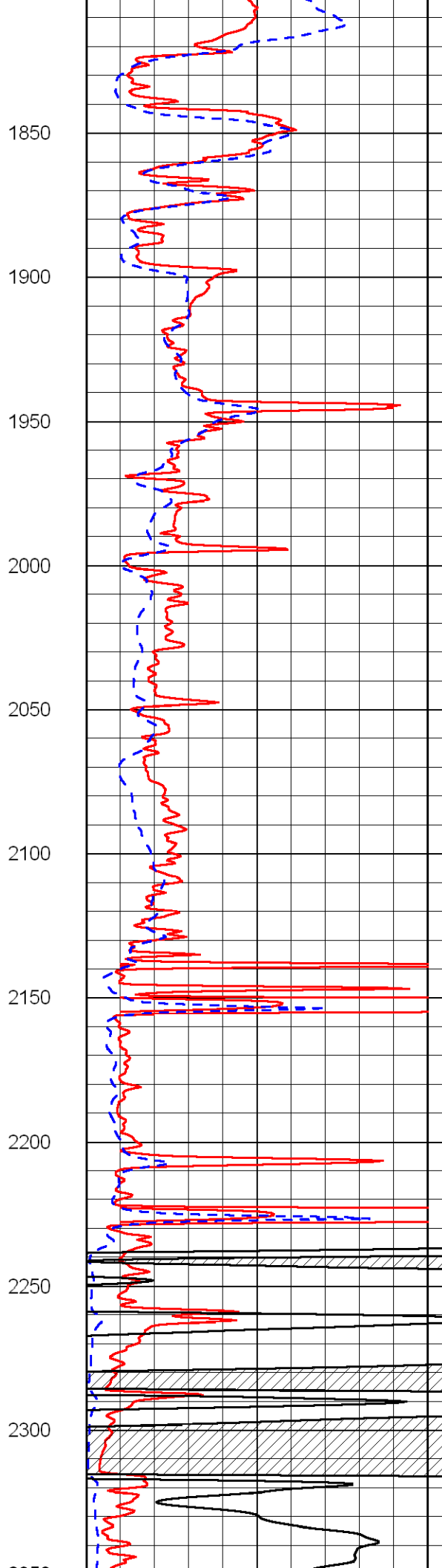
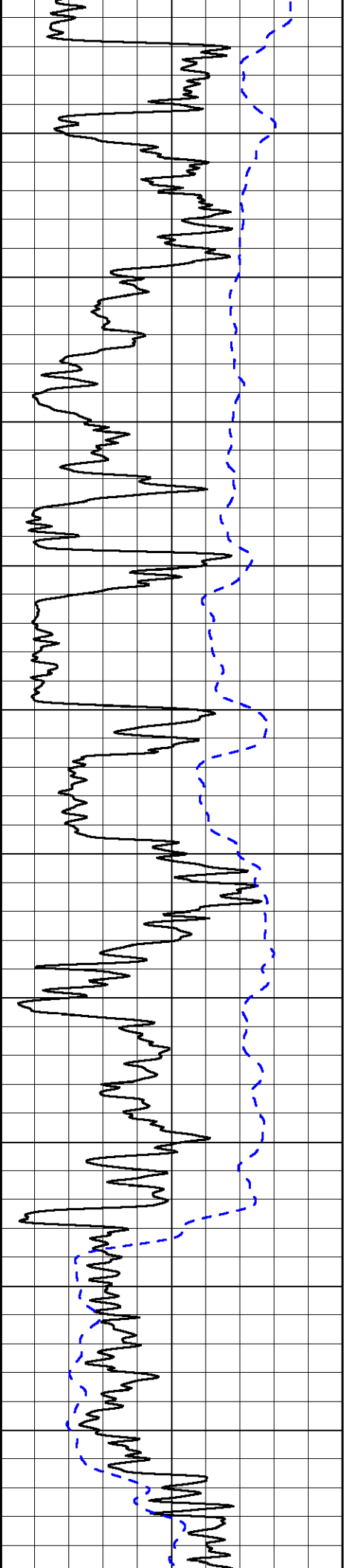
50 Shallow Resistivity 500

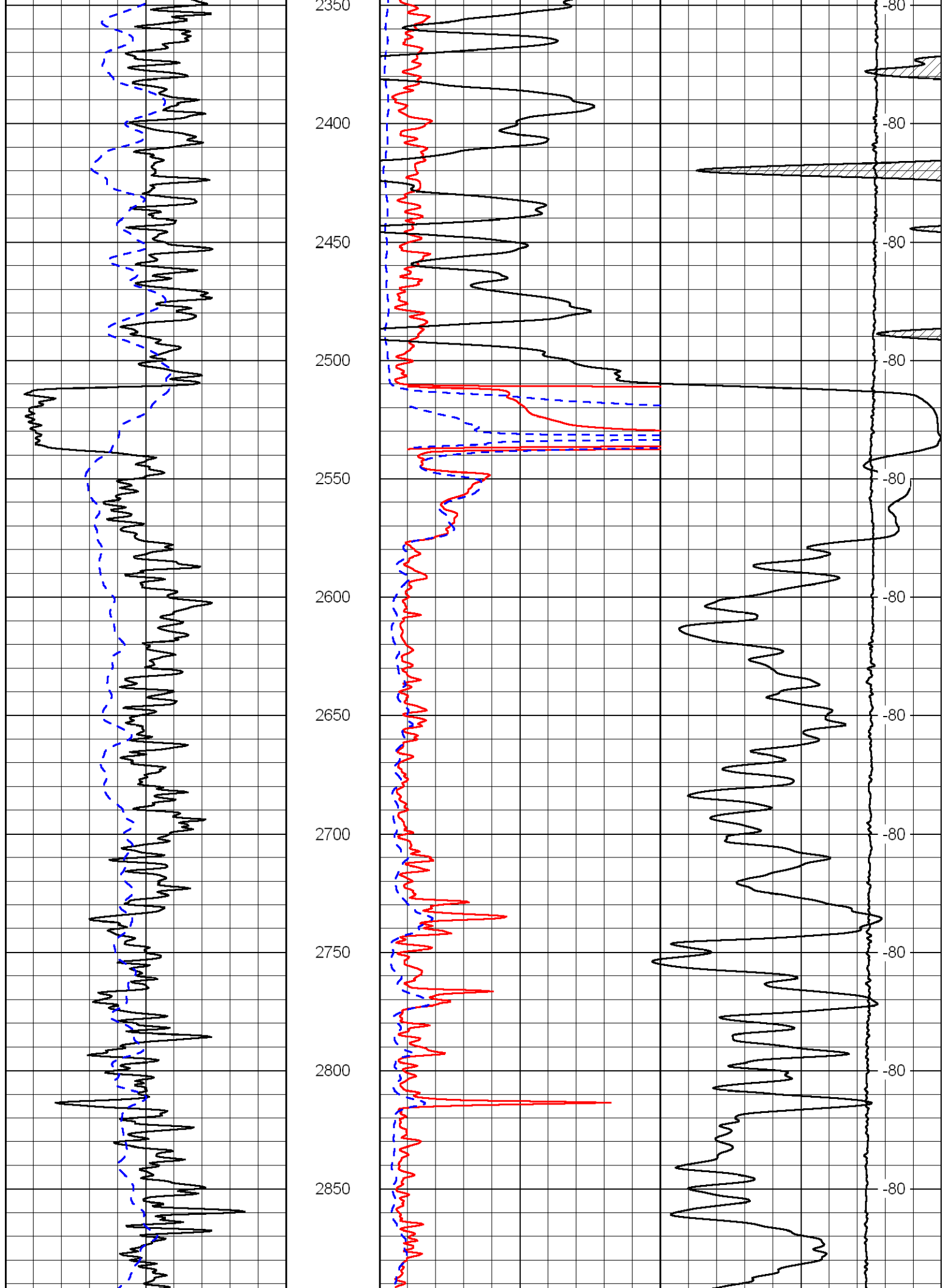
50 Deep Resistivity 500

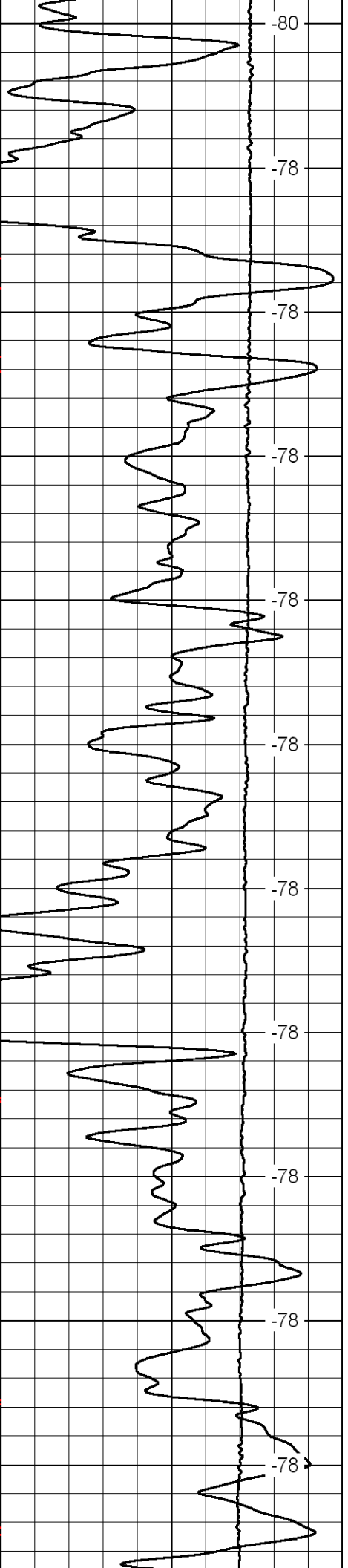
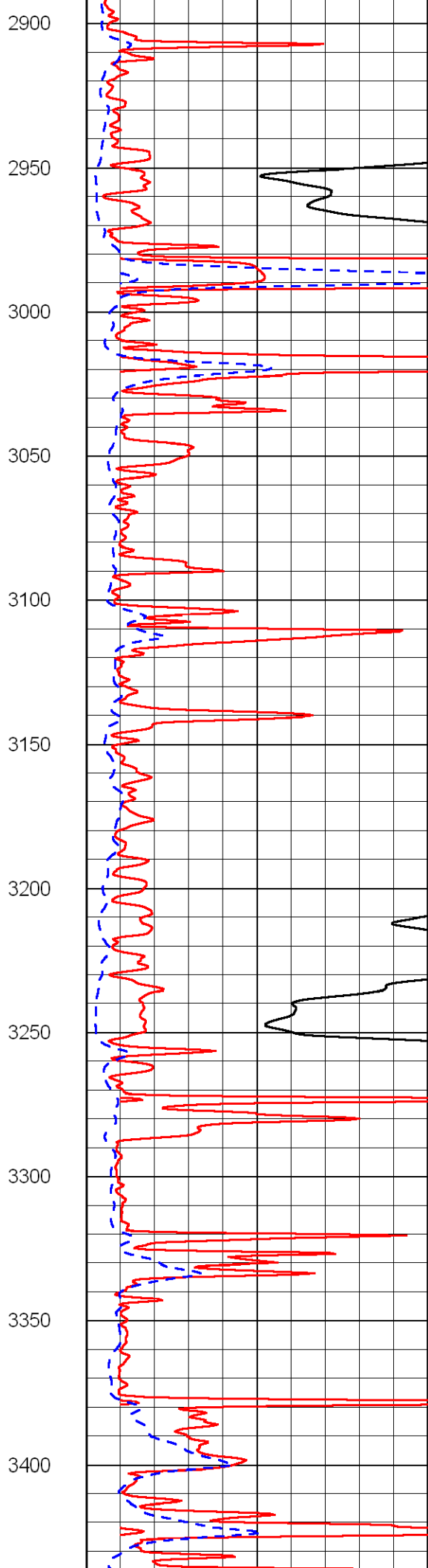
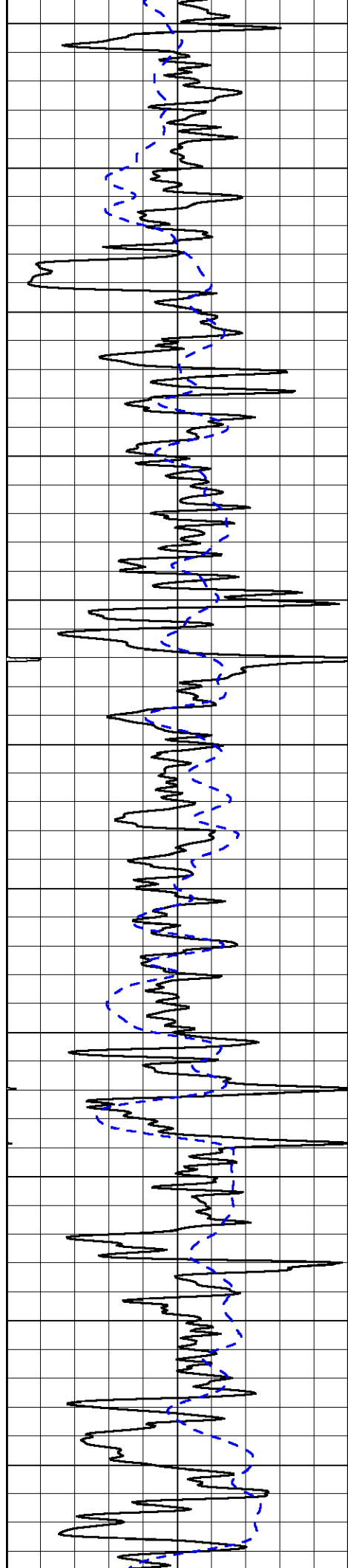


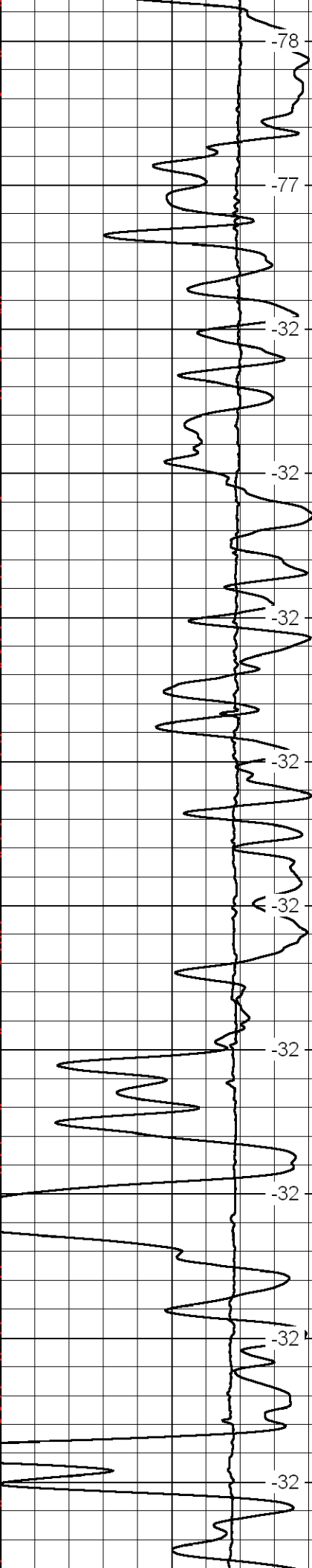
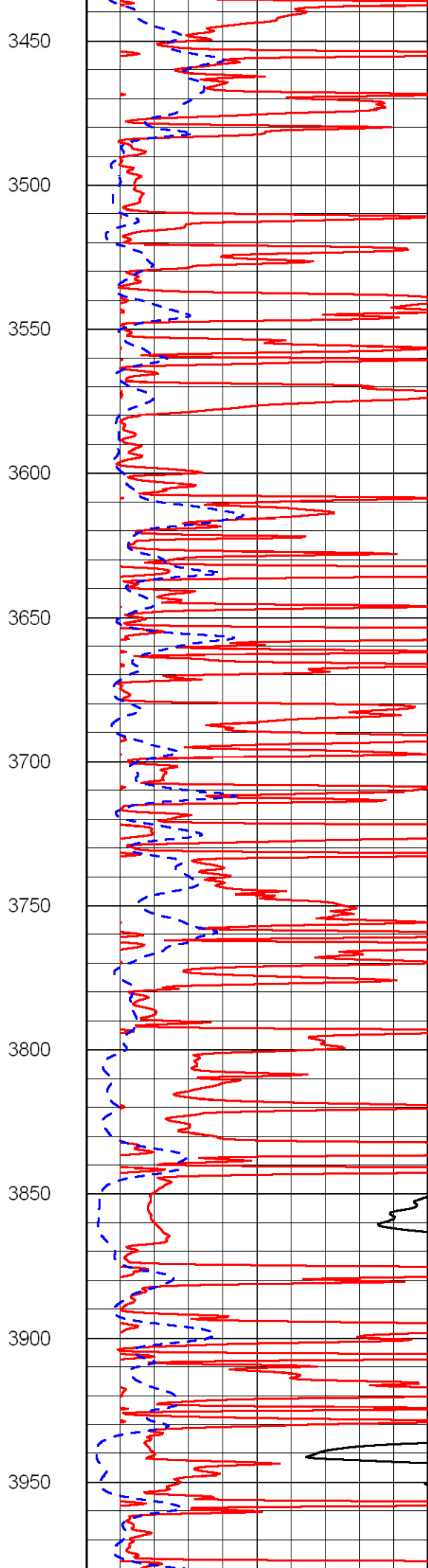
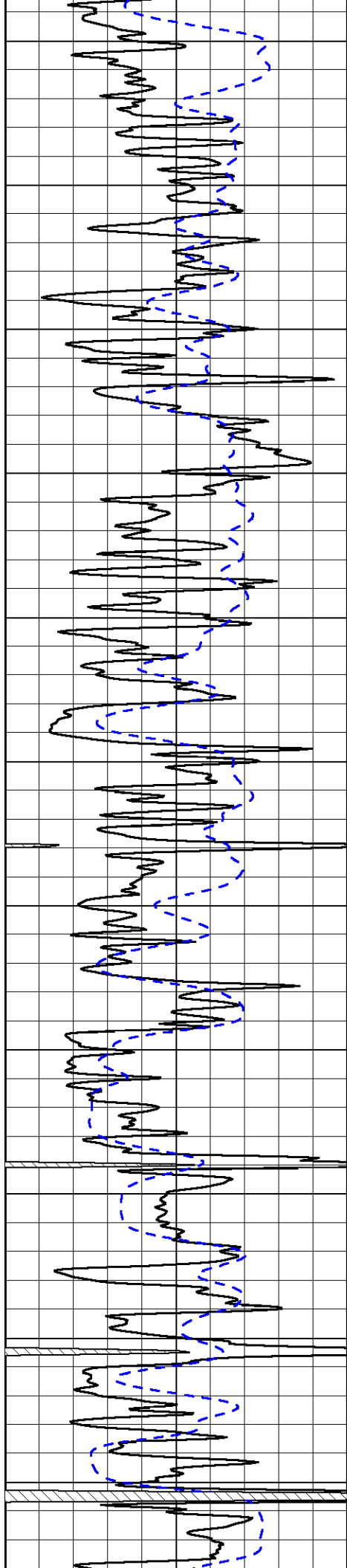


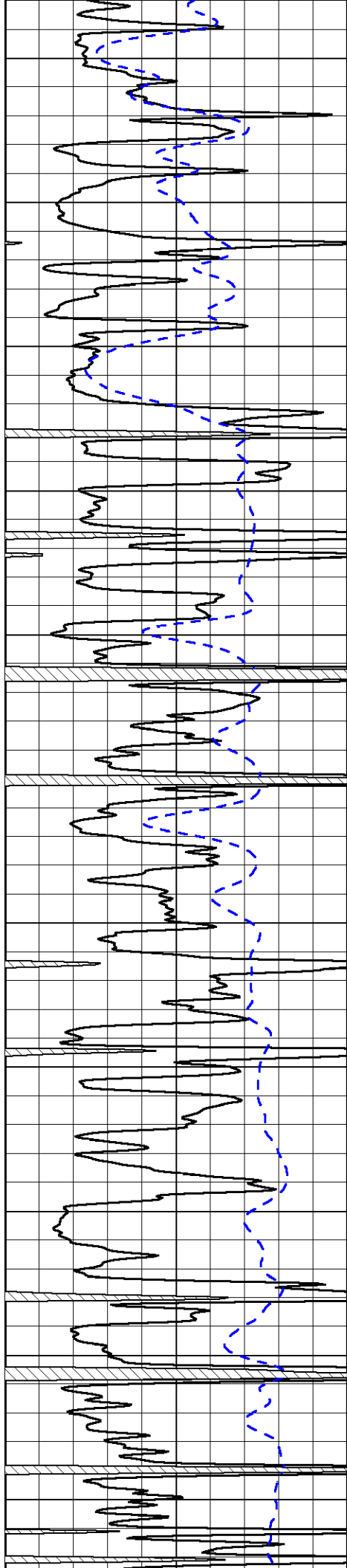




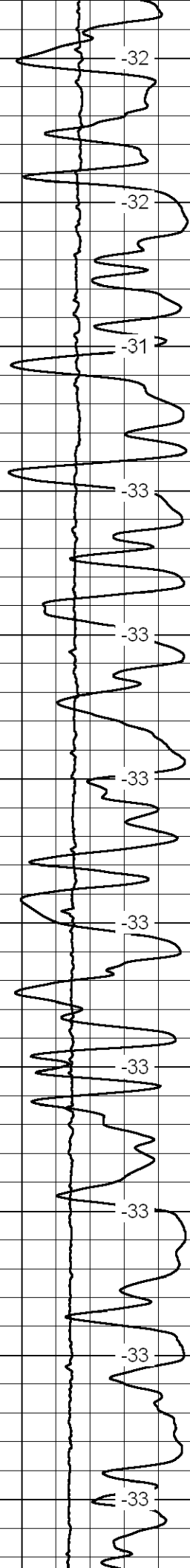
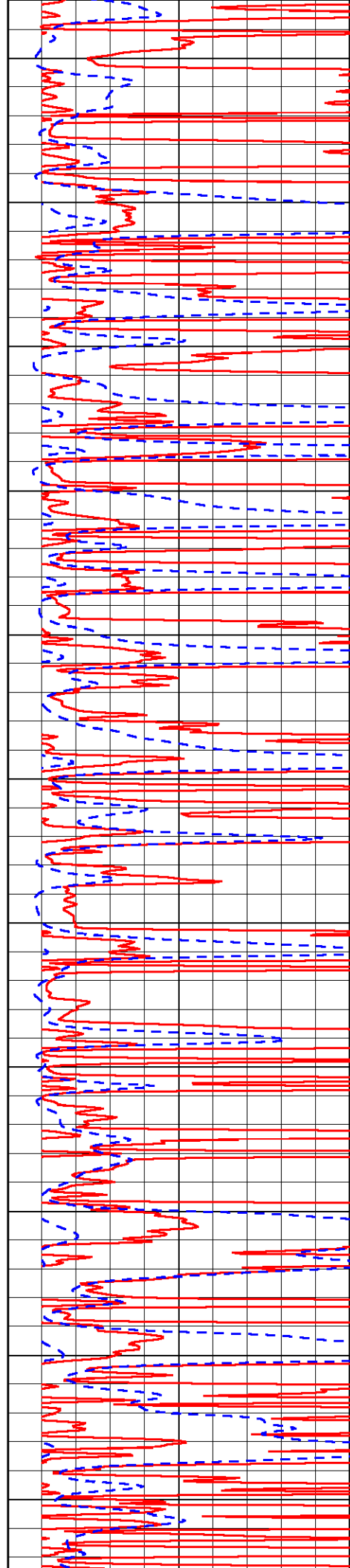


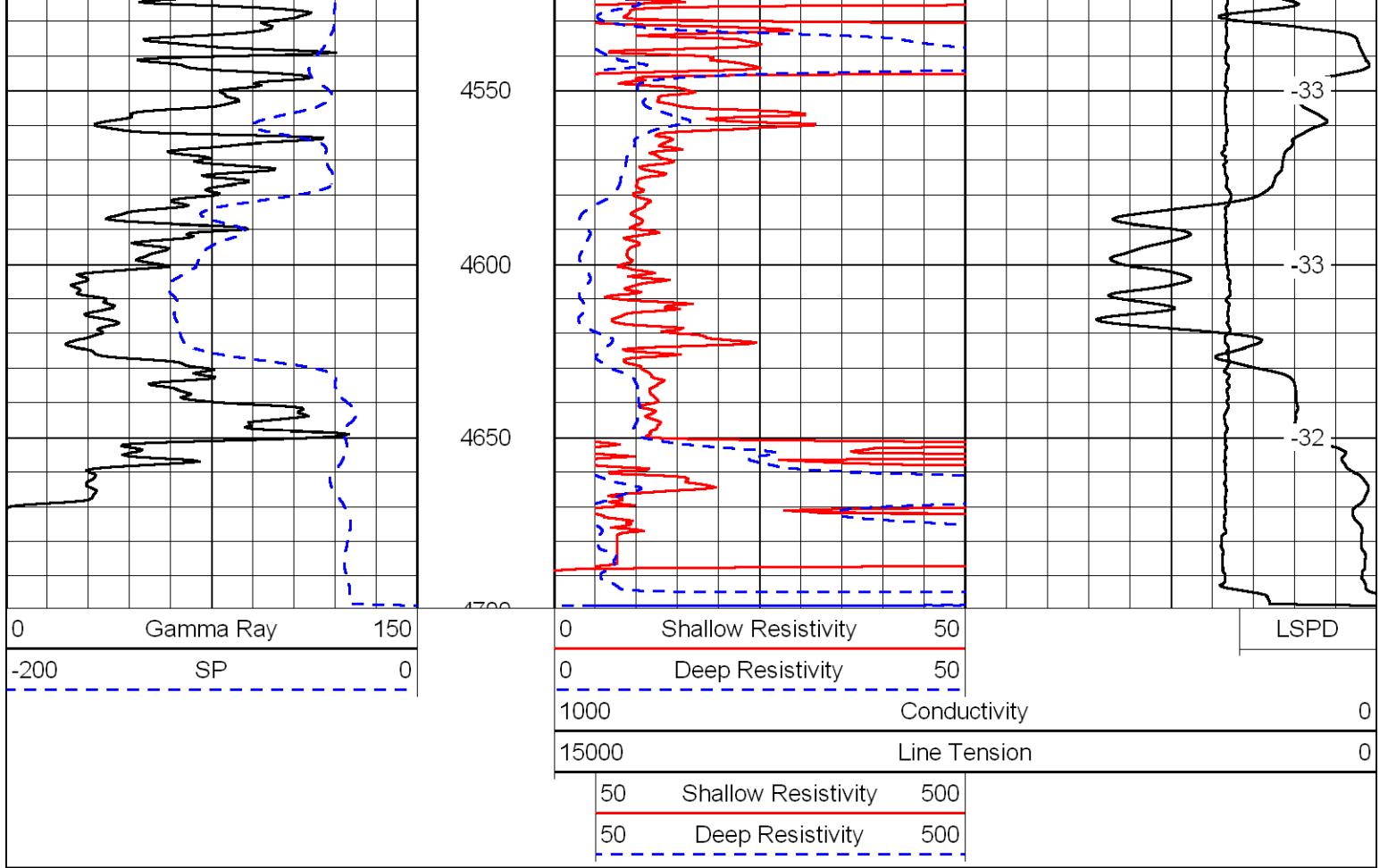




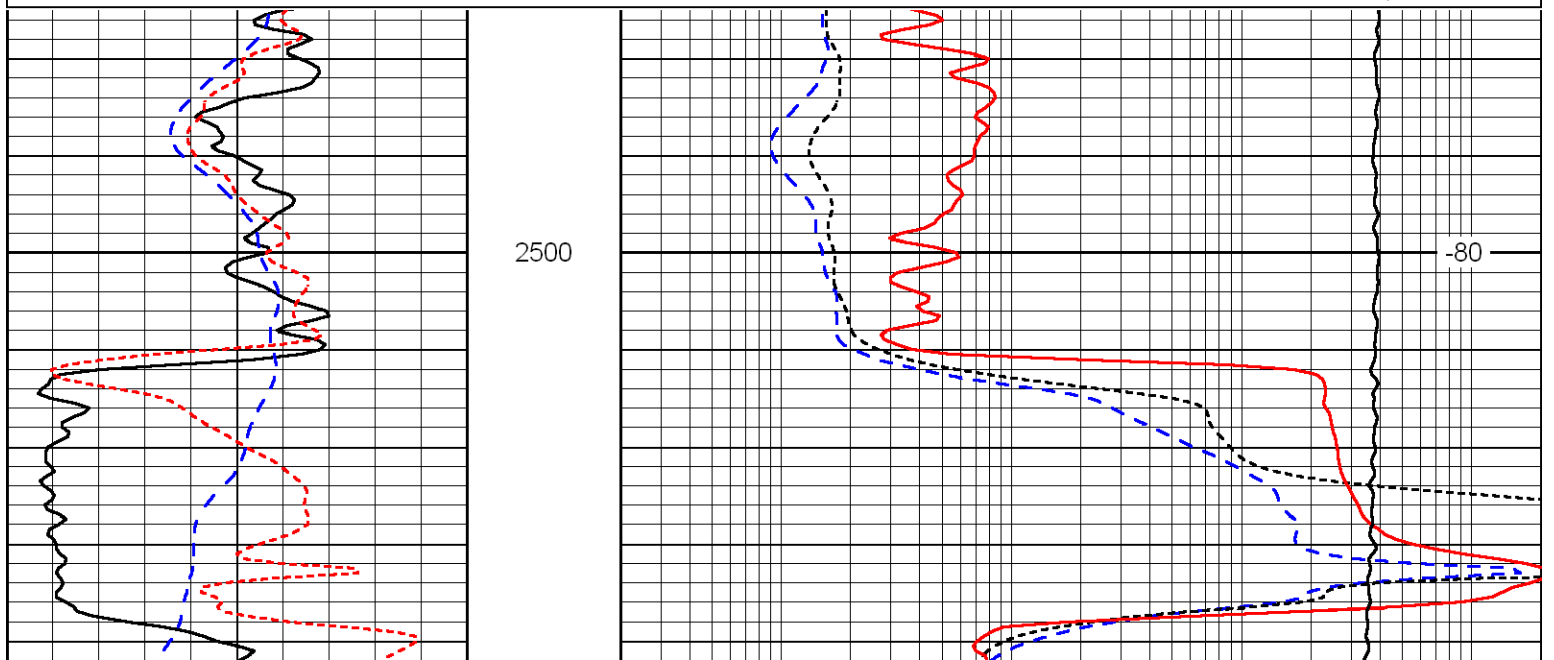
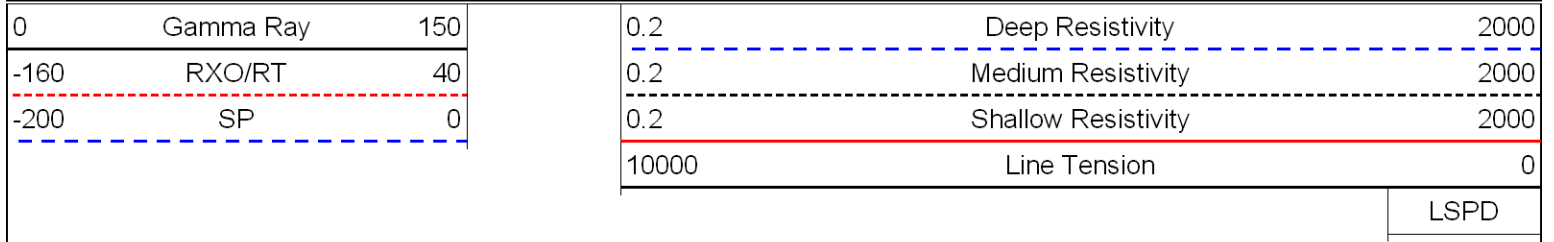


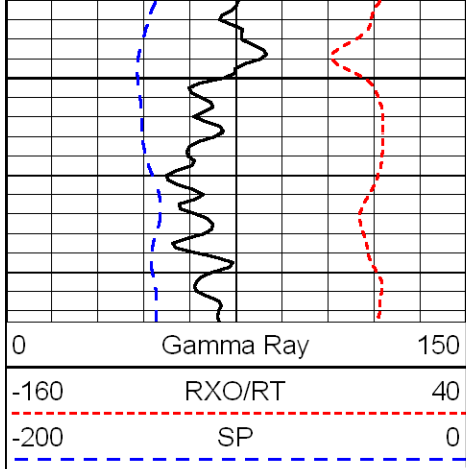
4000
4050
4100
4150
4200
4250
4300
4350
4400
4450
4500



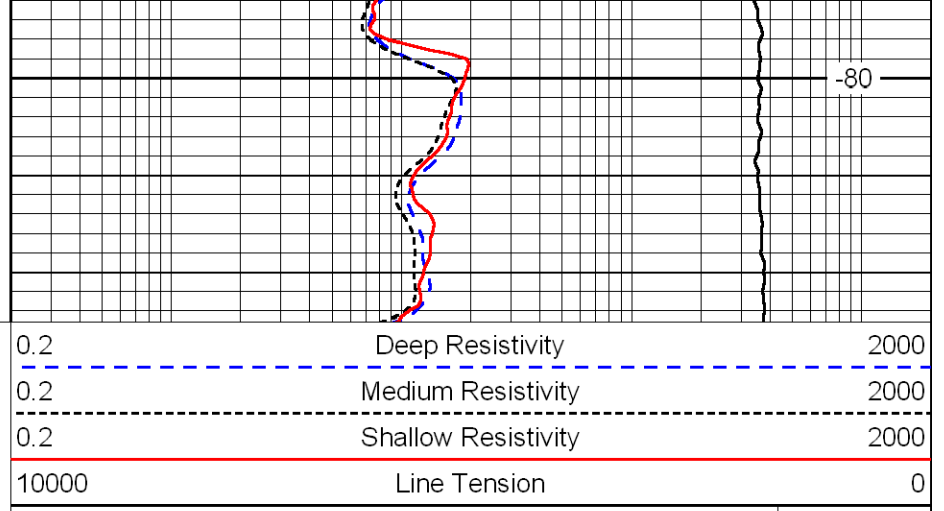


Database File: midconhd.db
 Dataset Pathname: DIL/mconstk
 Presentation Format: dil
 Dataset Creation: Sat Aug 20 23:36:49 2011
 Charted by: Depth in Feet scaled 1:240





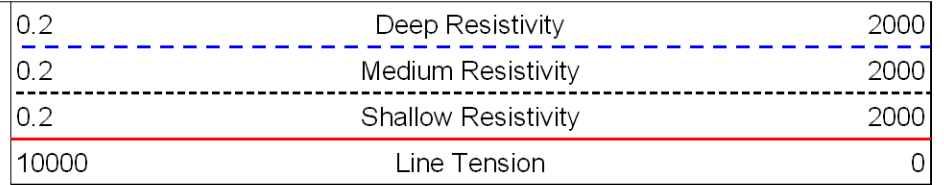
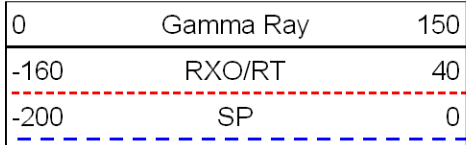
2550



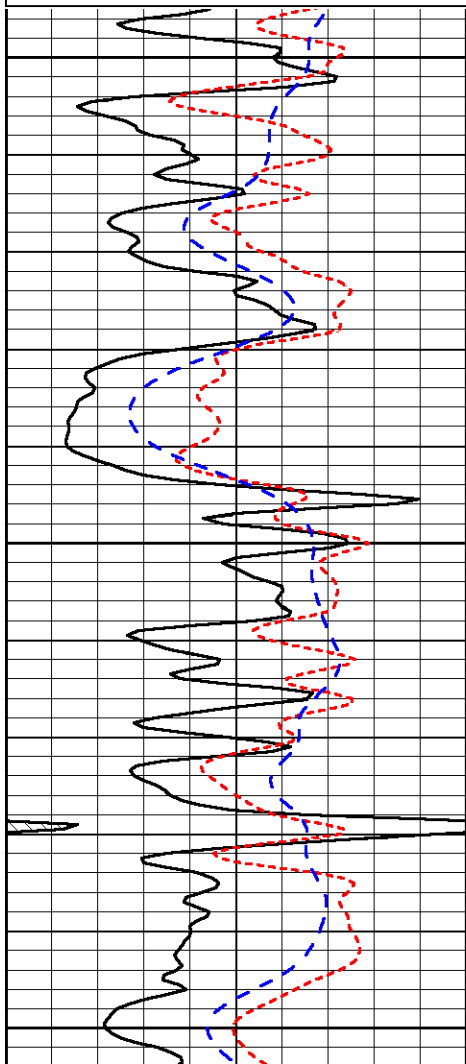
-80

LSPD

Database File: midconhd.db
 Dataset Pathname: DIL/mconstk
 Presentation Format: dil
 Dataset Creation: Sat Aug 20 23:36:49 2011
 Charted by: Depth in Feet scaled 1:240



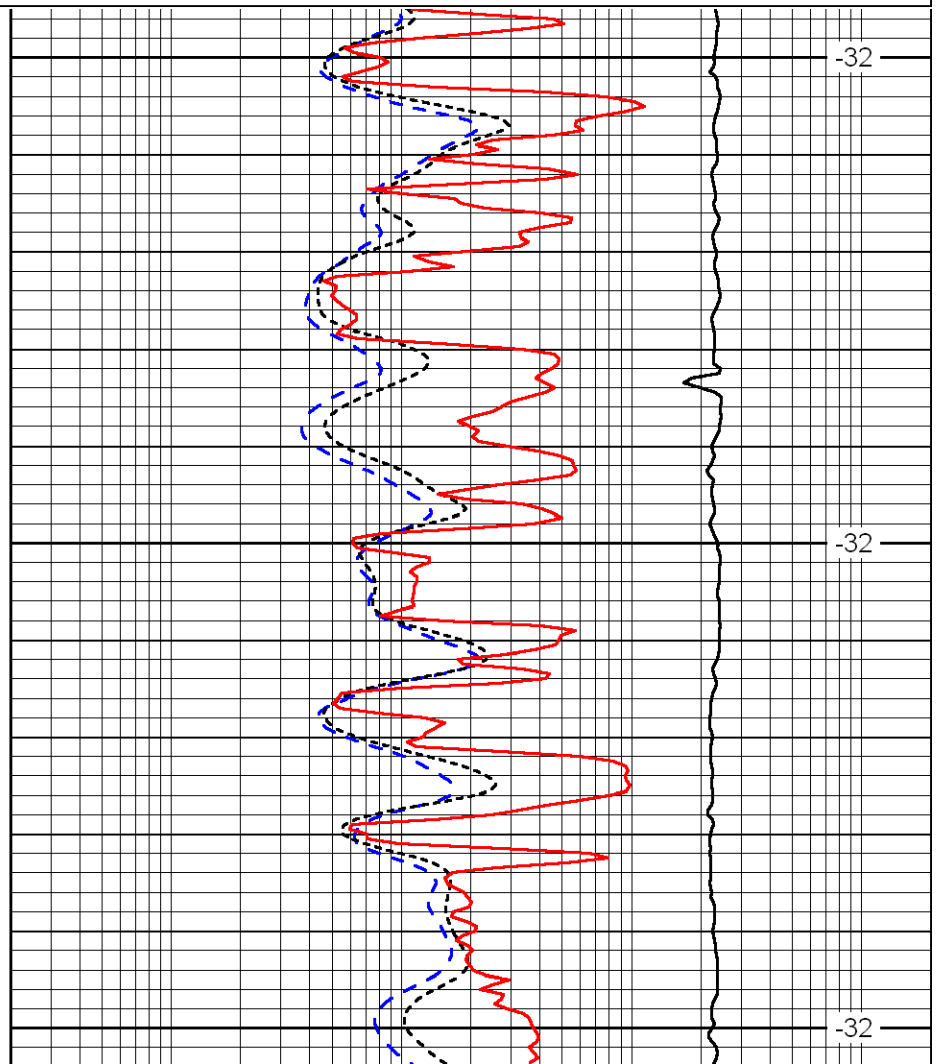
LSPD



3650

3700

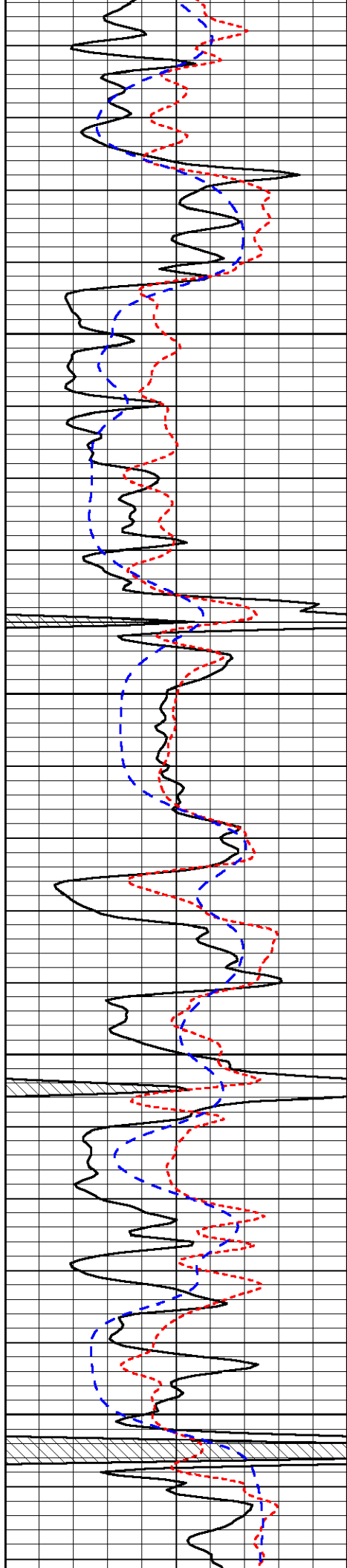
3750



-32

-32

-32

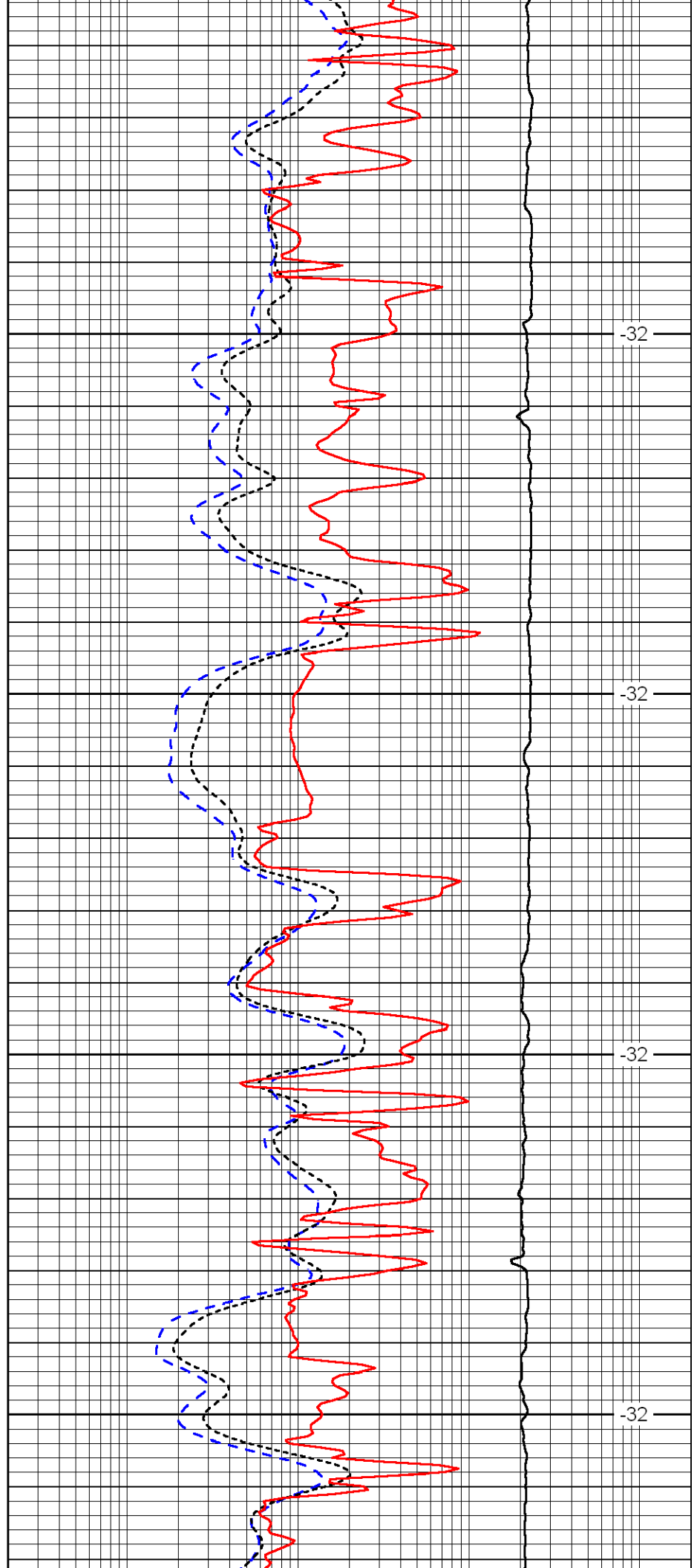


3800

3850

3900

3950

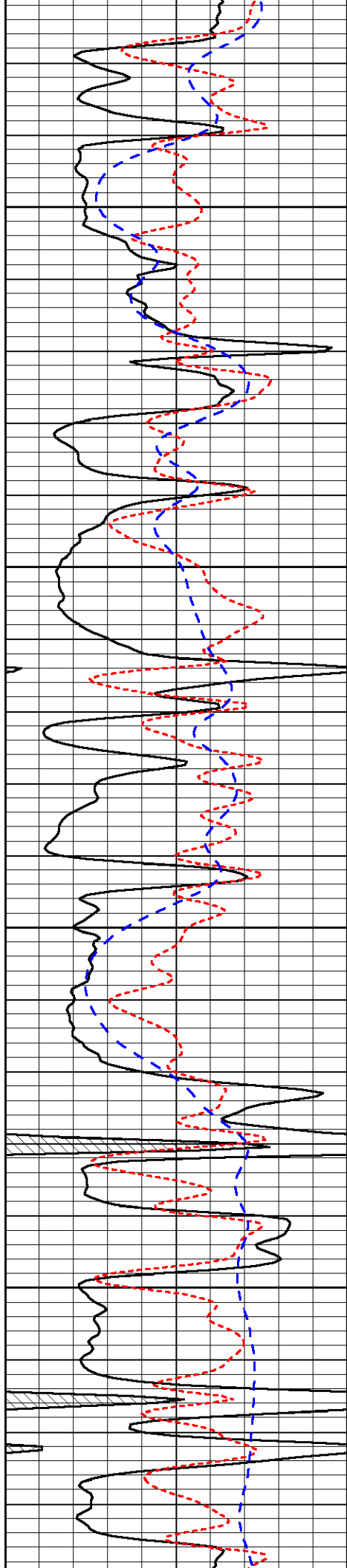


-32

-32

-32

-32

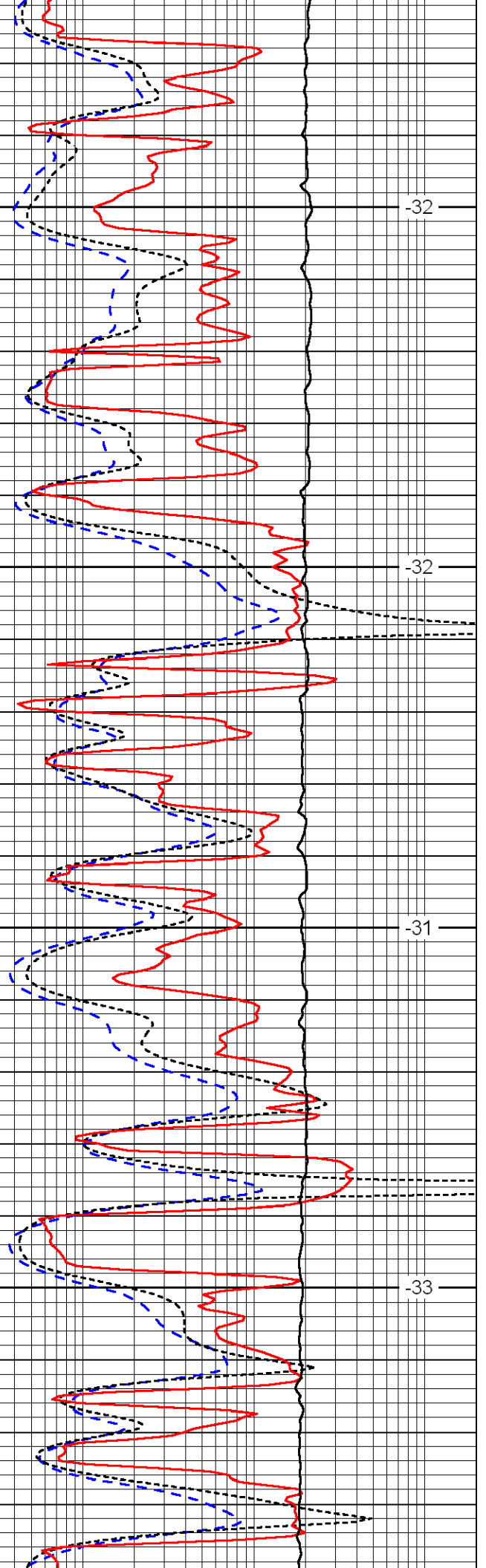


4000

4050

4100

4150

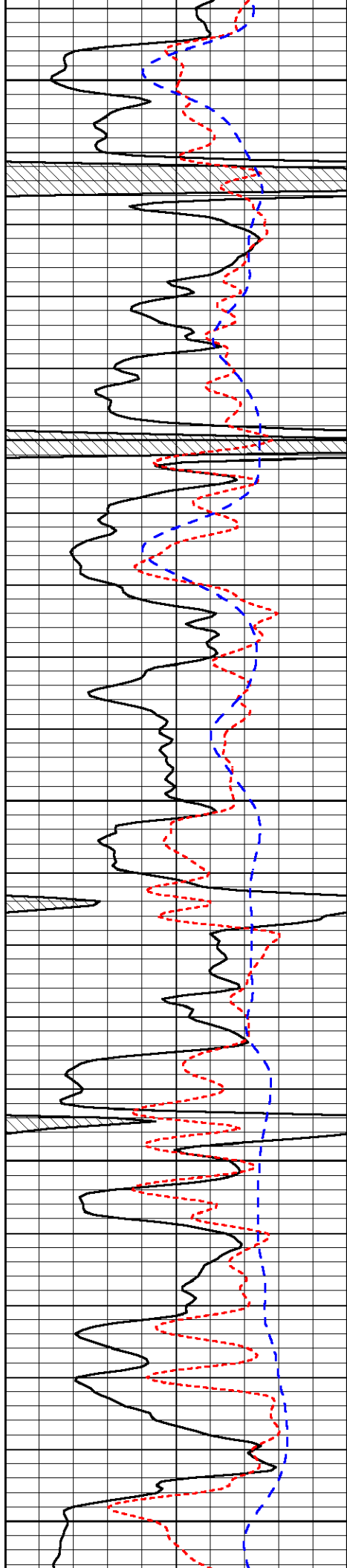


-32

-32

-31

-33



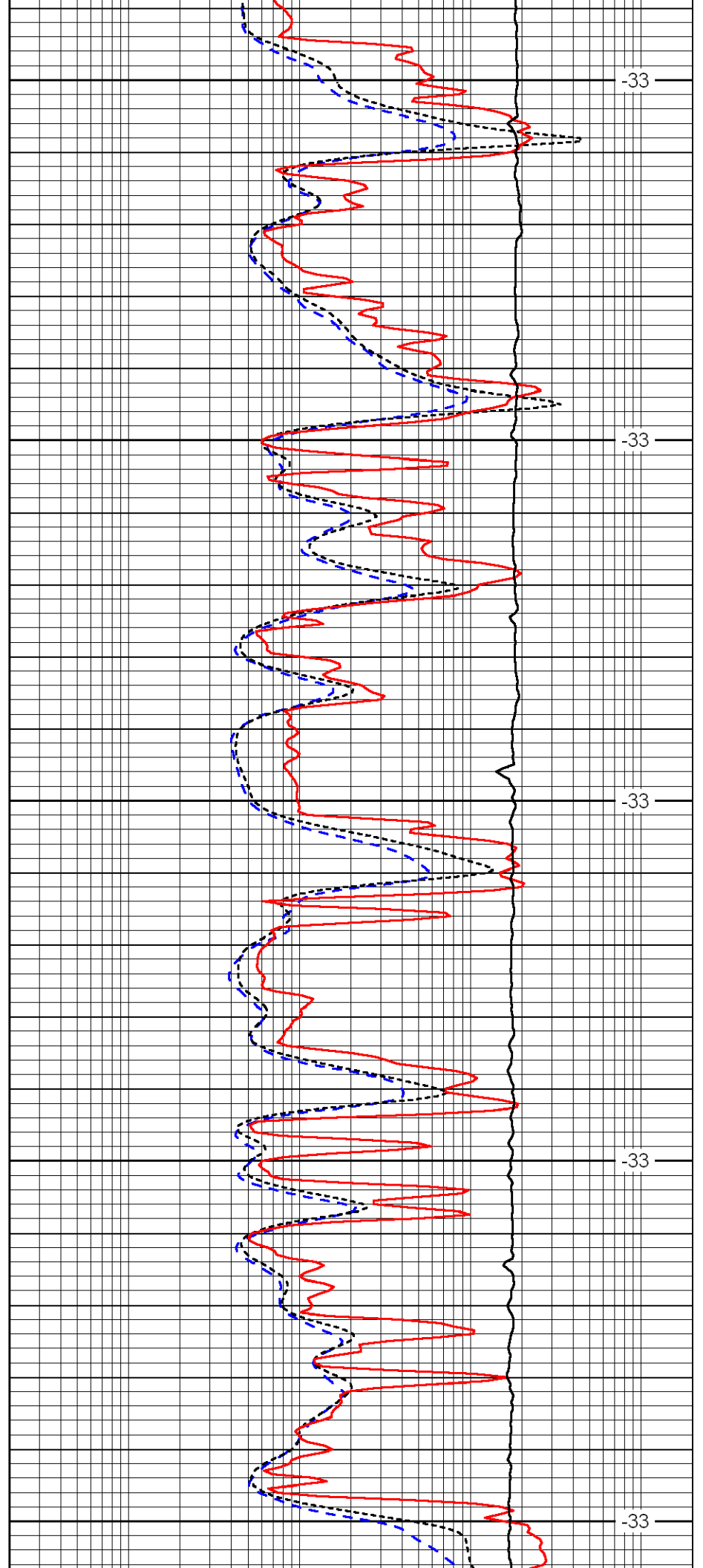
4200

4250

4300

4350

4400



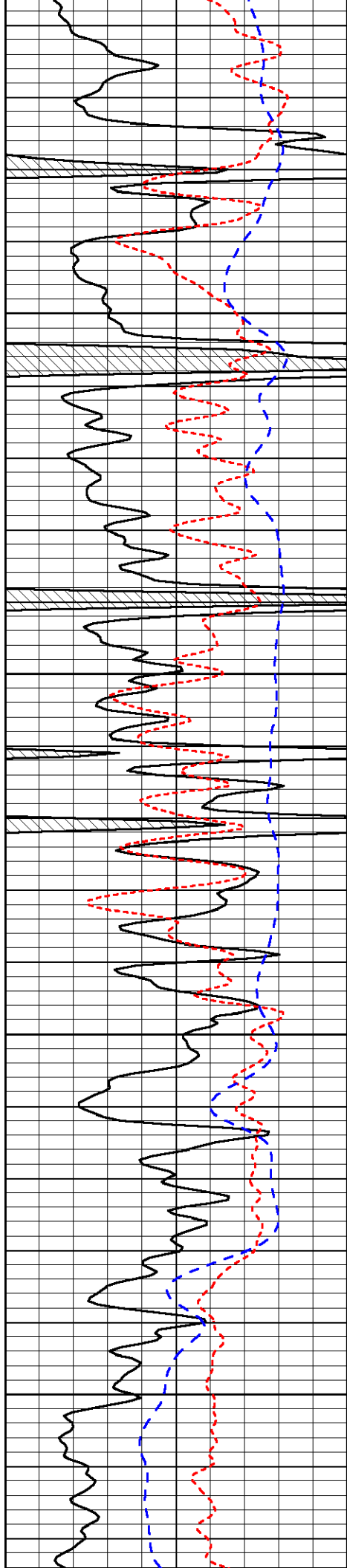
-33

-33

-33

-33

-33

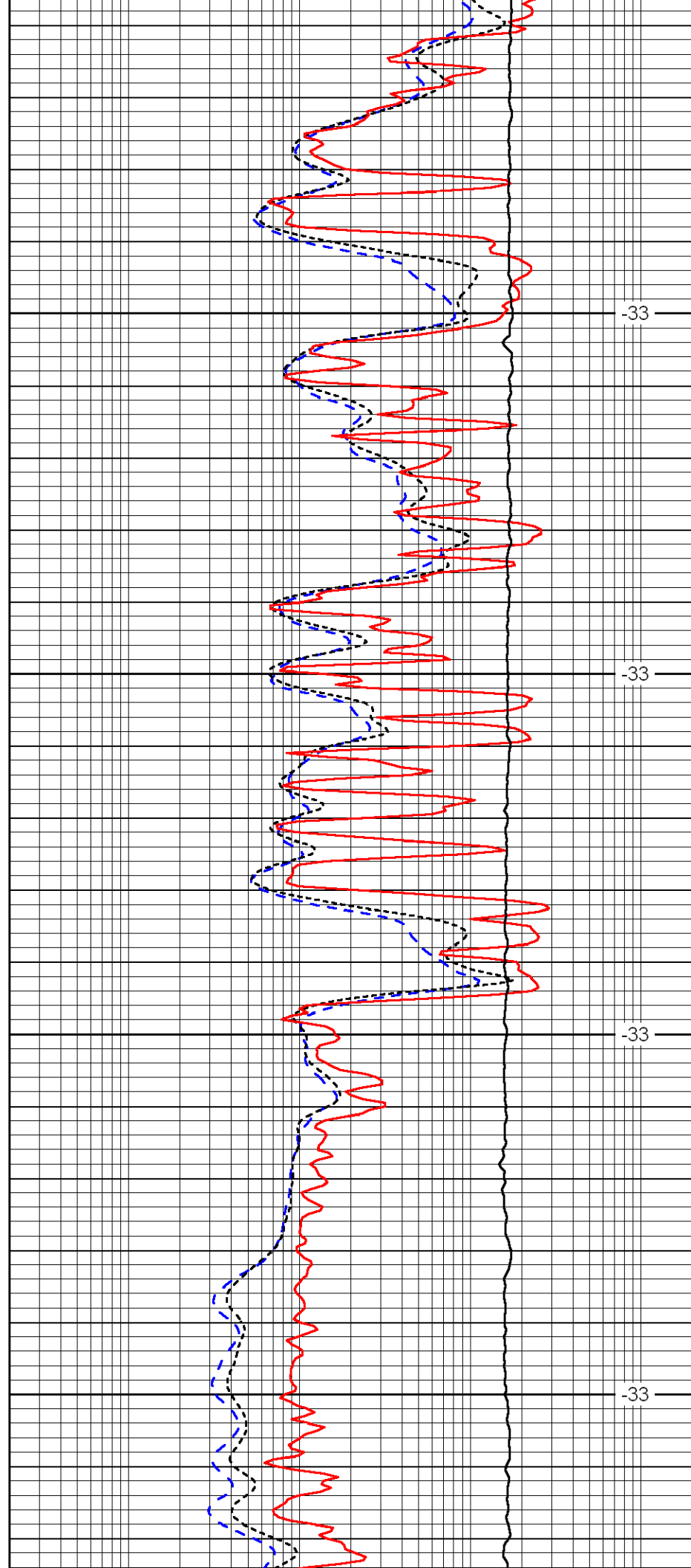


4450

4500

4550

4600

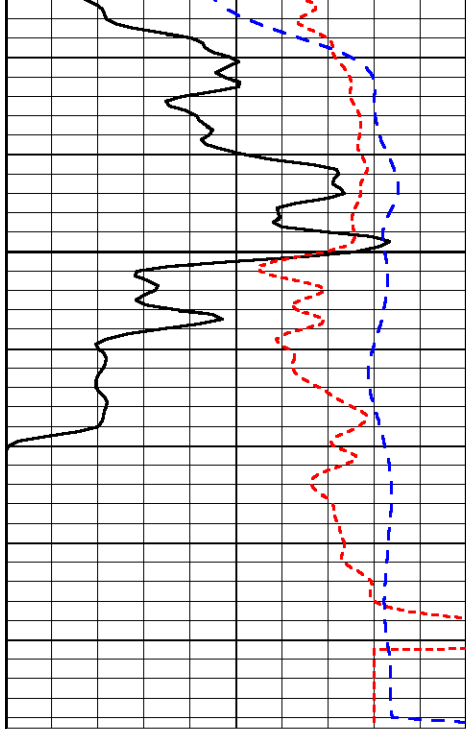


-33

-33

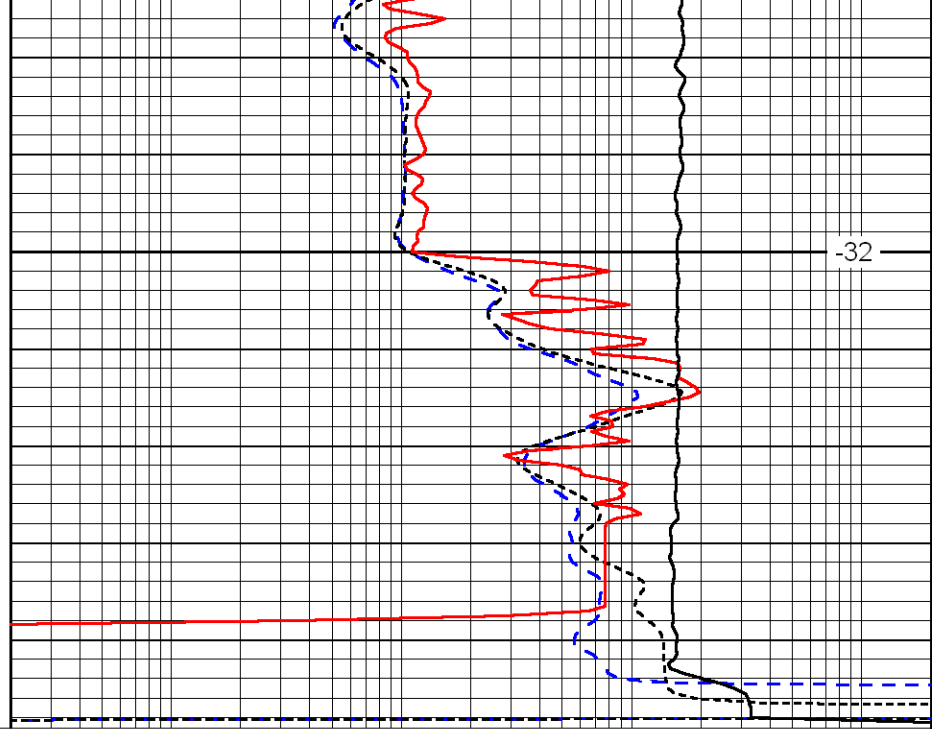
-33

-33



4650

0	Gamma Ray	150
-160	RXO/RT	40
-200	SP	0



-32

0.2	Deep Resistivity	2000
0.2	Medium Resistivity	2000
0.2	Shallow Resistivity	2000
10000	Line Tension	0

LSPD