



(785) 625-3858

Sonic Cement
Bond Log

15-101-22268-00-00

Company Larson Engineering, Inc.
Well Marit No. 2-24
Field Wildcat
County Lane State Kansas

Location NW-SE-NE-NW
768' FNL & 2242' FWL

Sec: 24 Twp: 18S Rge: 30W

Other Services
Portable Mast

Permanent Datum Ground Level Elevation 2842
Log Measured From Kelly Bushing 7 Ft. Above Perm. Datum
Drilling Measured From Kelly Bushing

Elevation
K.B. 2849
D.F. 2842
G.L. 2842

Run Number	One	
Date Survey	3/11/2011	
Date Cementing	1/3/2011	
Type Cementing Operation	Primary	
Depth Driller	4617	
Depth Logger	1936	
Logged Interval	1934 to 0	to
Casing Driller	5.5 @ T.D.	@
Float Collar -- D.V. Tool		
Squeeze Depth		
Amount & Type Cement		
Amount & Type Admix		
Type Fluid In Hole	Water	
Fluid Level	Full	
Salinity PPM CL		
Weight lb/gal -- Vis.		
Approx. Logged Cement Top		
Calculated Cement Top		
Max. Hole Temperature	122	
Tool No.	D-1	
Spacing Recorded	3-5	
Equipment -- Location	72 Hays	
Recorded By	K. Ladrigan	
Witnessed By	Tom Larson	

<<< Fold Here >>>

All interpretations are opinions based on inferences from electrical or other measurements and we cannot and do not guarantee the accuracy or correctness of any interpretation, and we shall not, except in the case of gross or willful negligence on our part, be liable or responsible for any loss, costs, damages, or expenses incurred or sustained by anyone resulting from any interpretation made by any of our officers, agents or employees. These interpretations are also subject to our general terms and conditions set out in our current Price Schedule.

Comments

Thank you for using Log-Tech (785) 625-3858

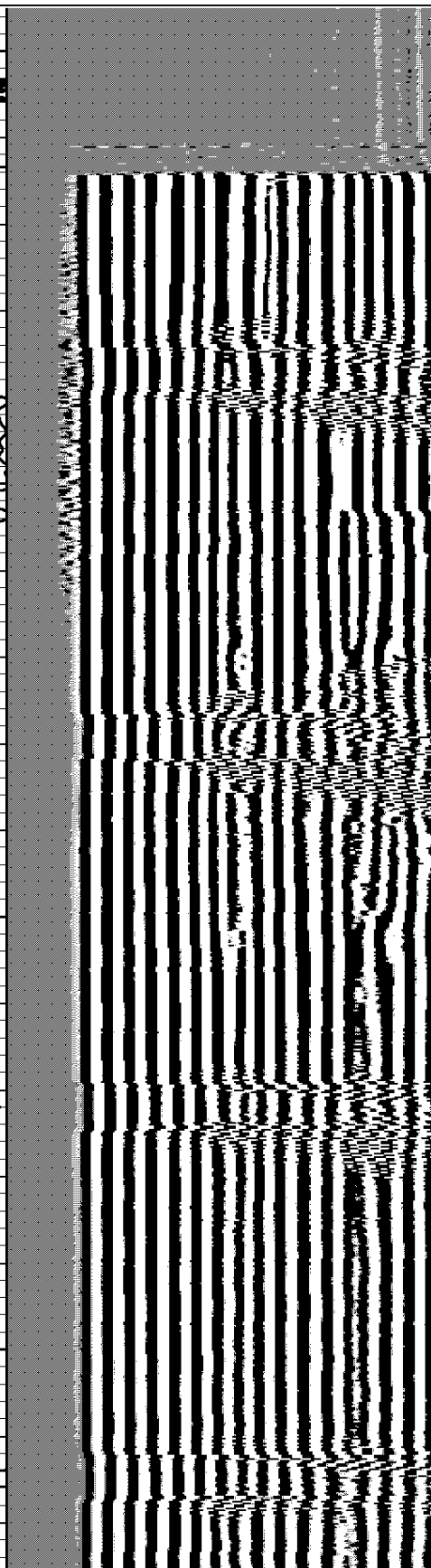
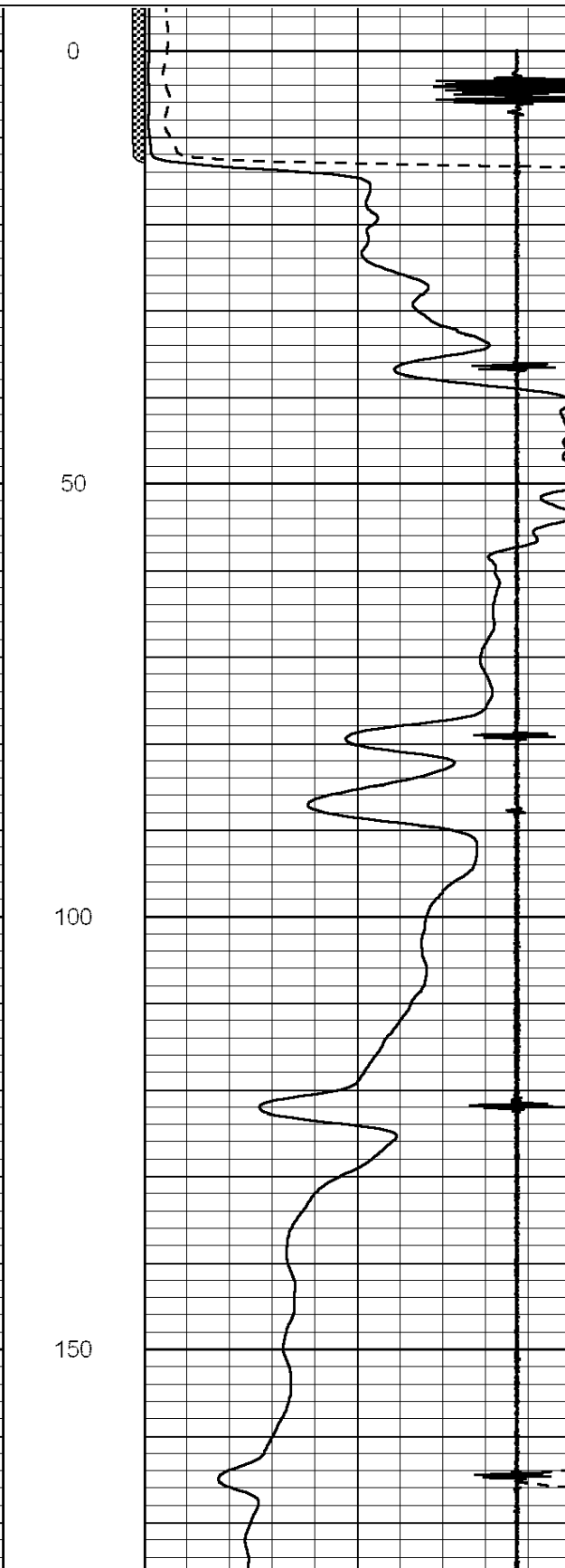
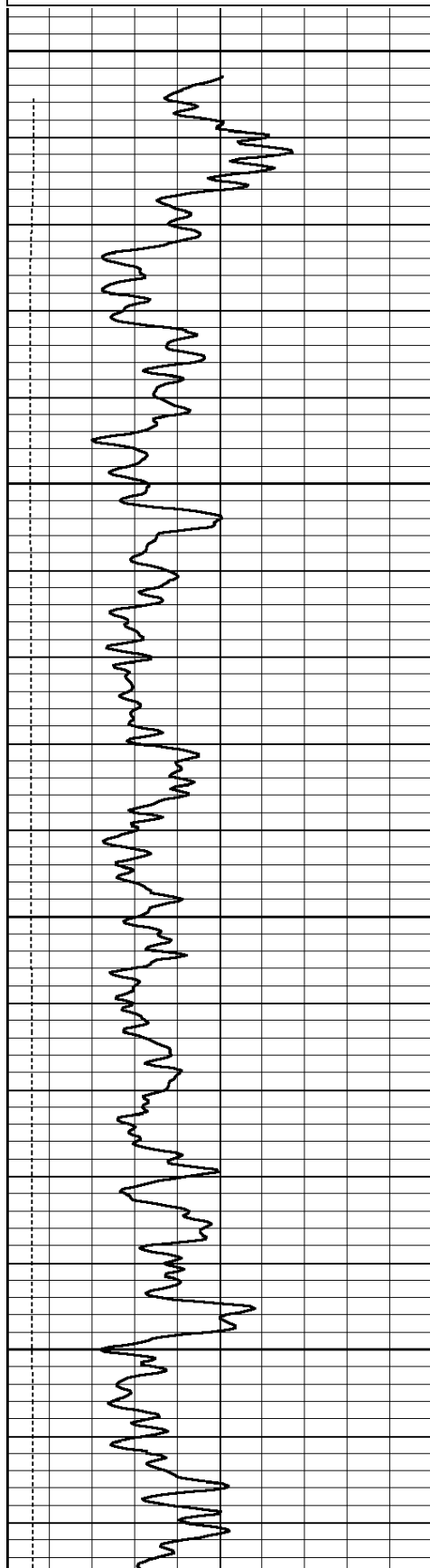
Dighton, KS., 7 West to Eagle Road., 1/8th South
East Into. (Past 1st Well)

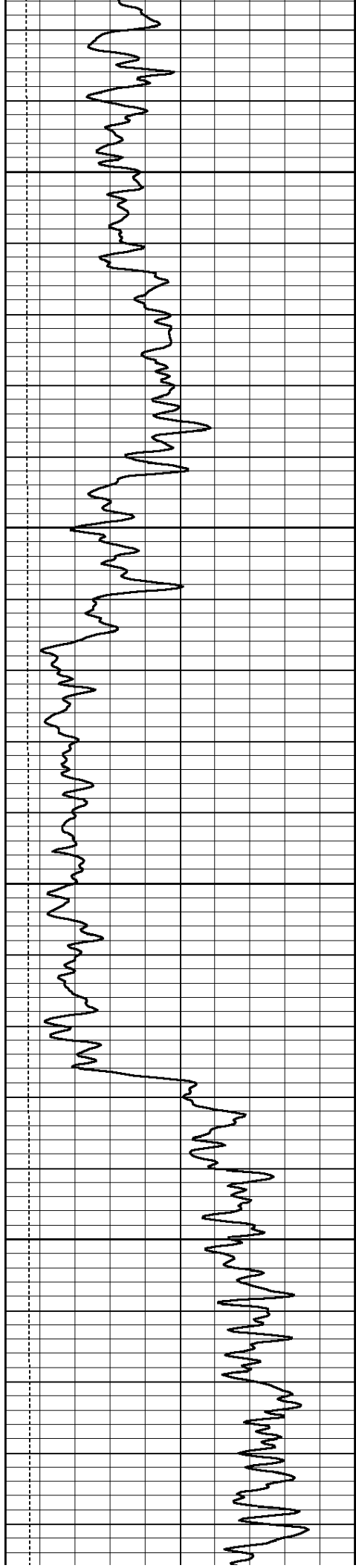


Main Pass

Database File: larsen-marit2-24.db
 Dataset Pathname: grcbl/pass3.1
 Presentation Format: cbl dig
 Dataset Creation: Fri Mar 11 14:33:25 2011
 Charted by: Depth in Feet scaled 1:240

0	GR (GAPI)	150	AMP3	0	Amplitude (mV)	100	200	Variable Density	1200
0	LTEN (lb)	5000	(mV)	0	Amplified Amplitude (mV)	20			
			-100 10	7	Collar Locator	-1			



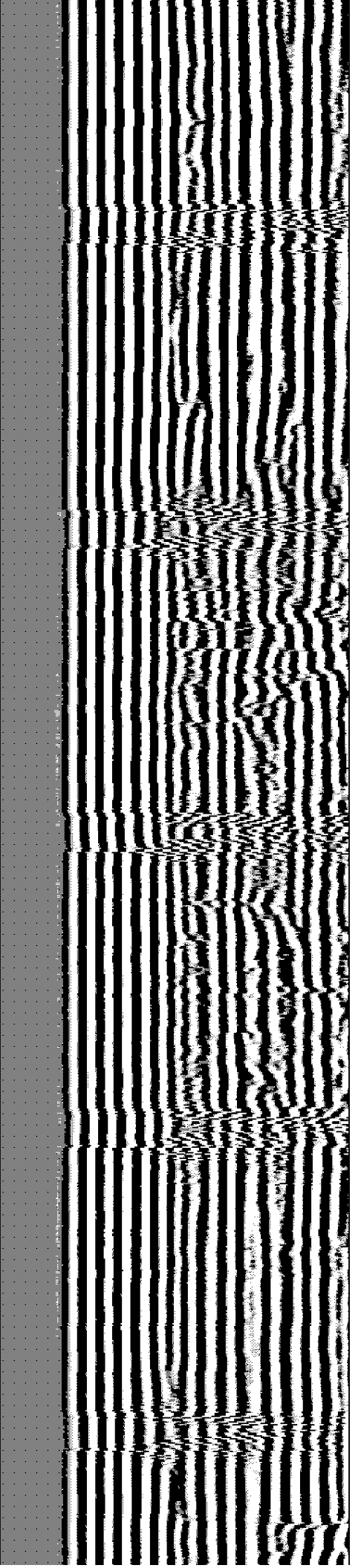
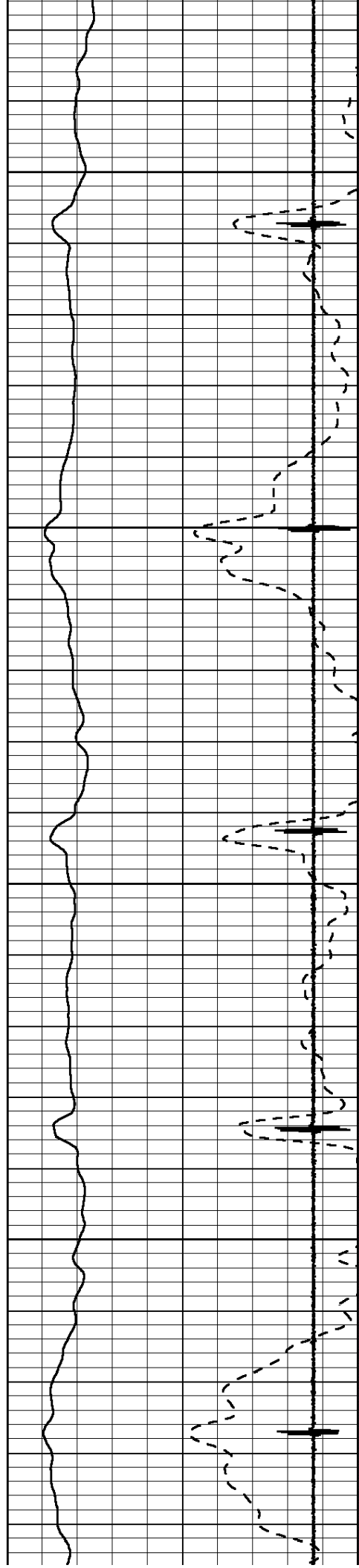


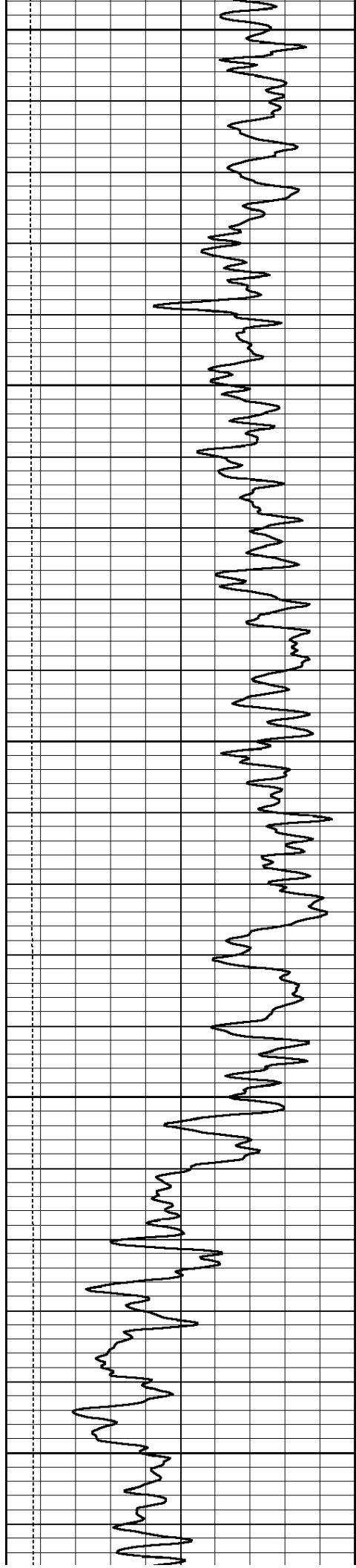
200

250

300

350





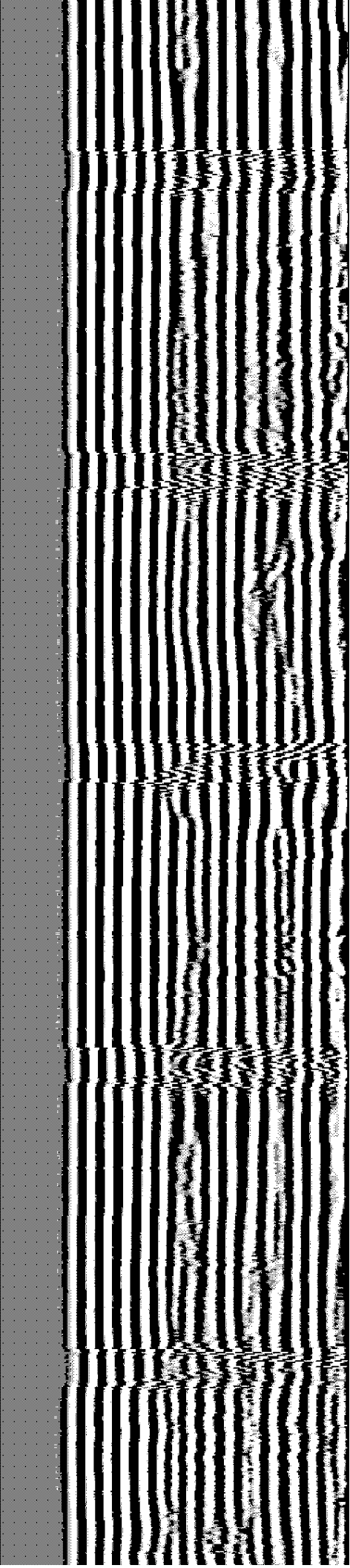
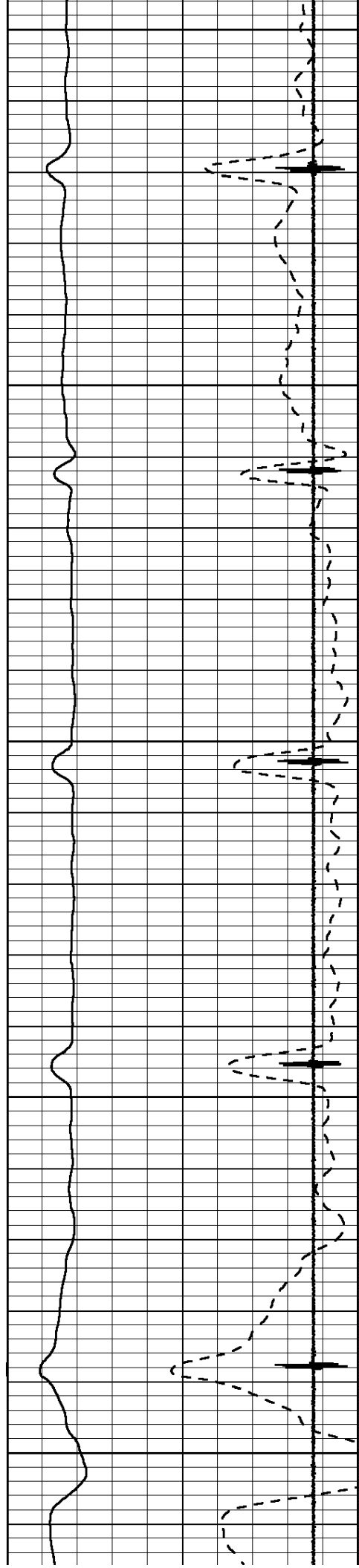
400

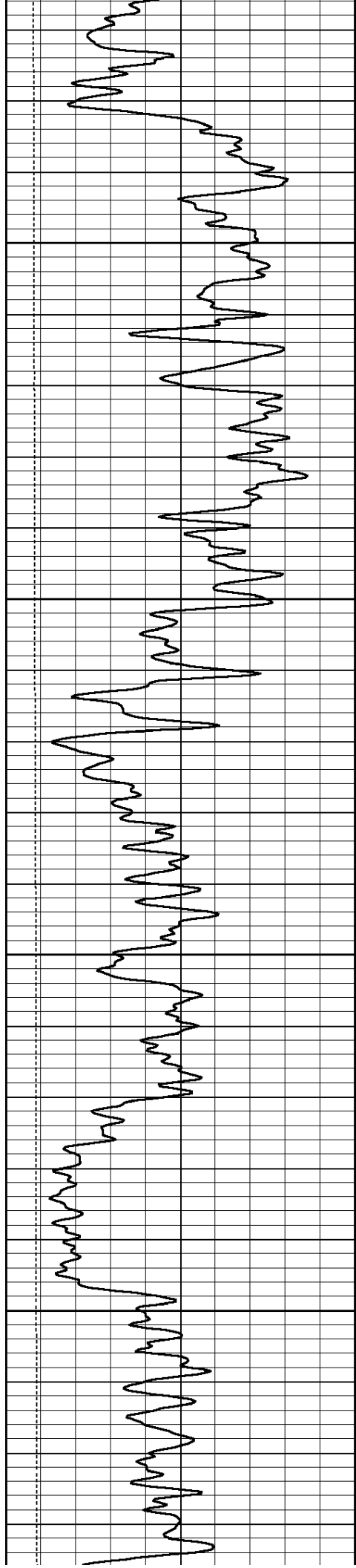
450

500

550

600



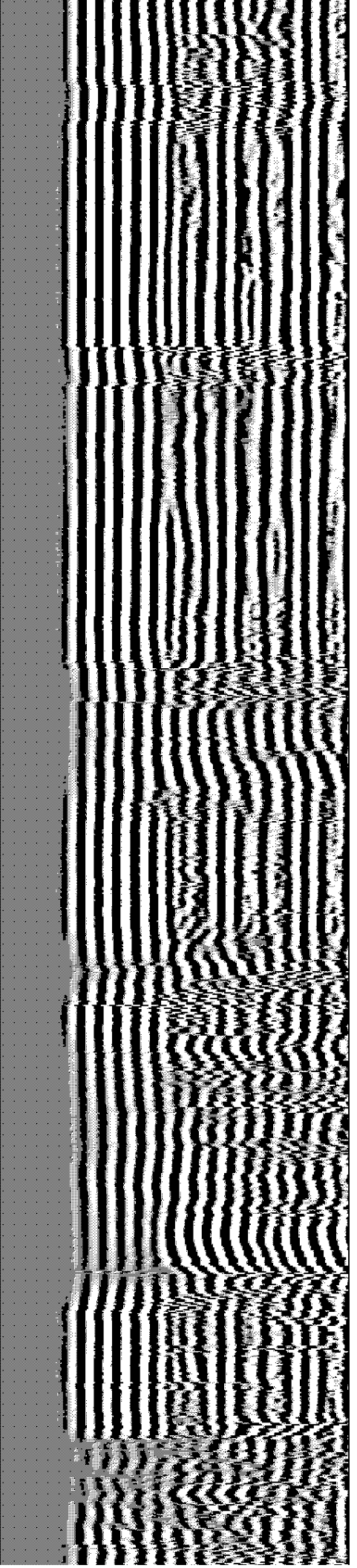
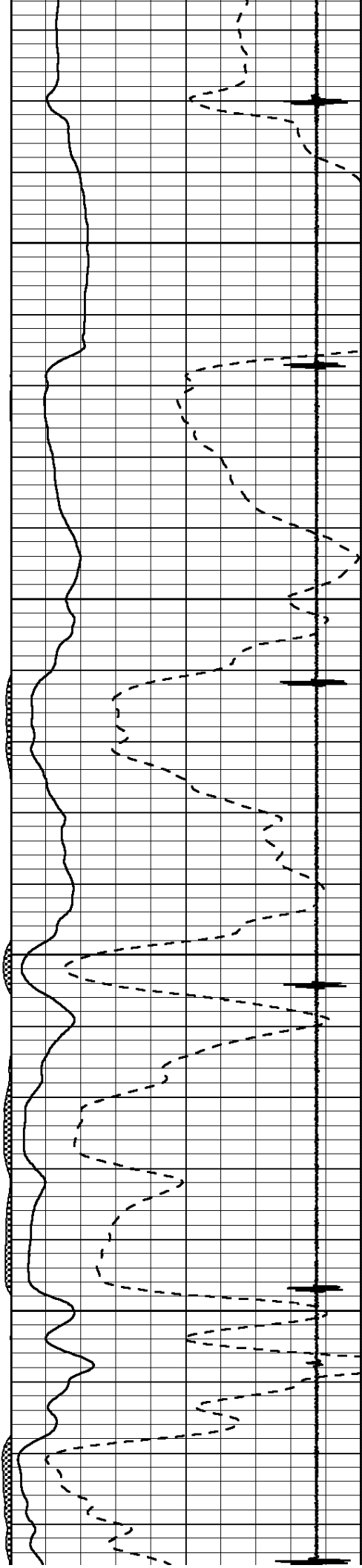


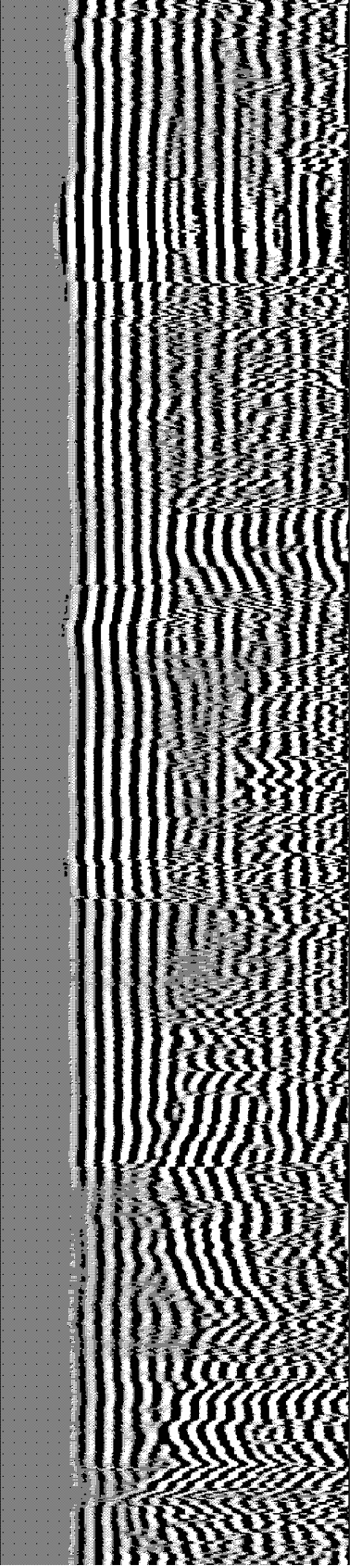
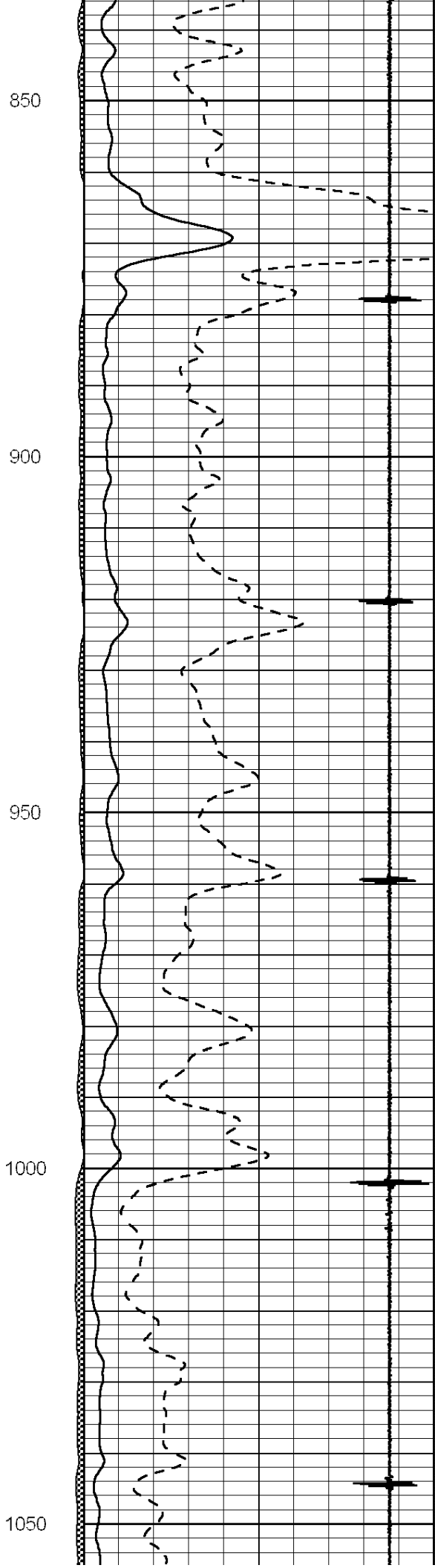
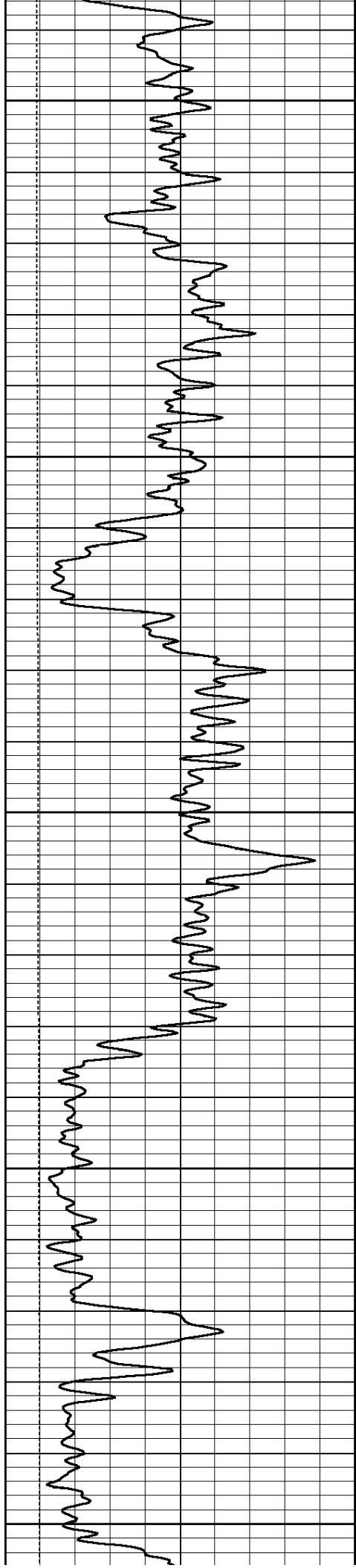
650

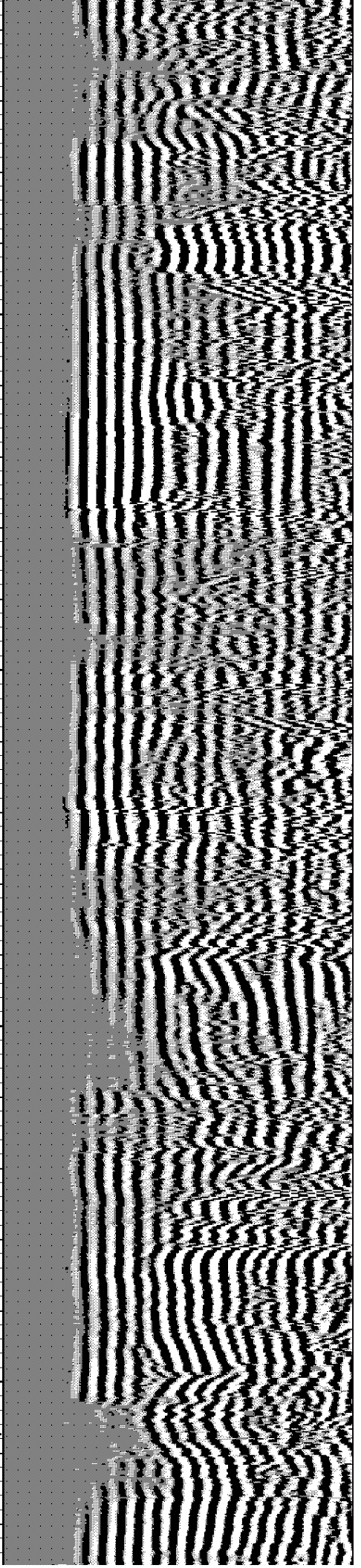
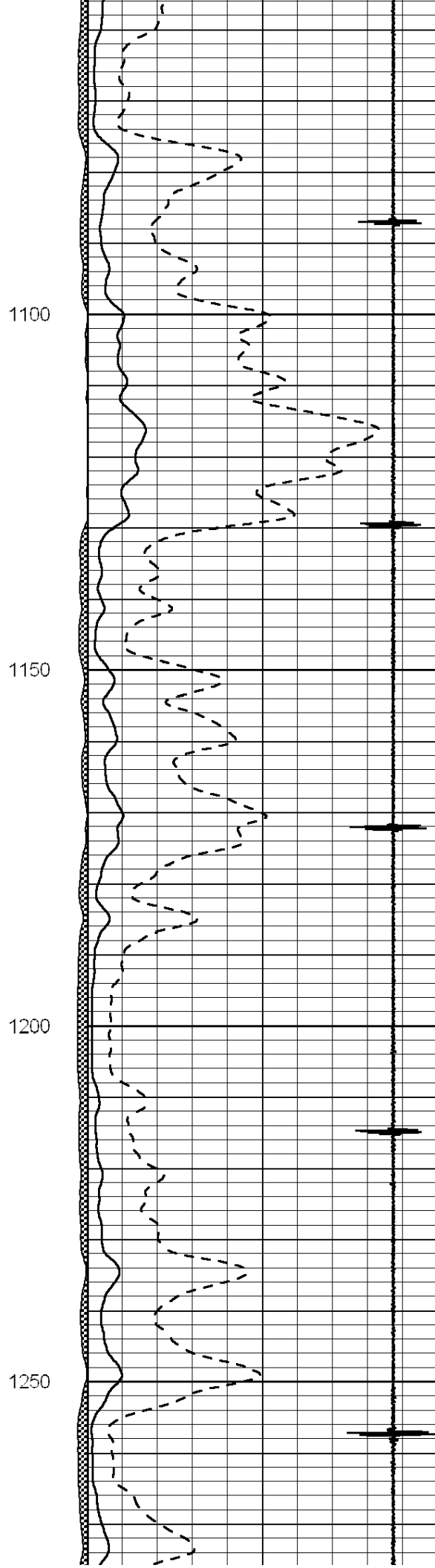
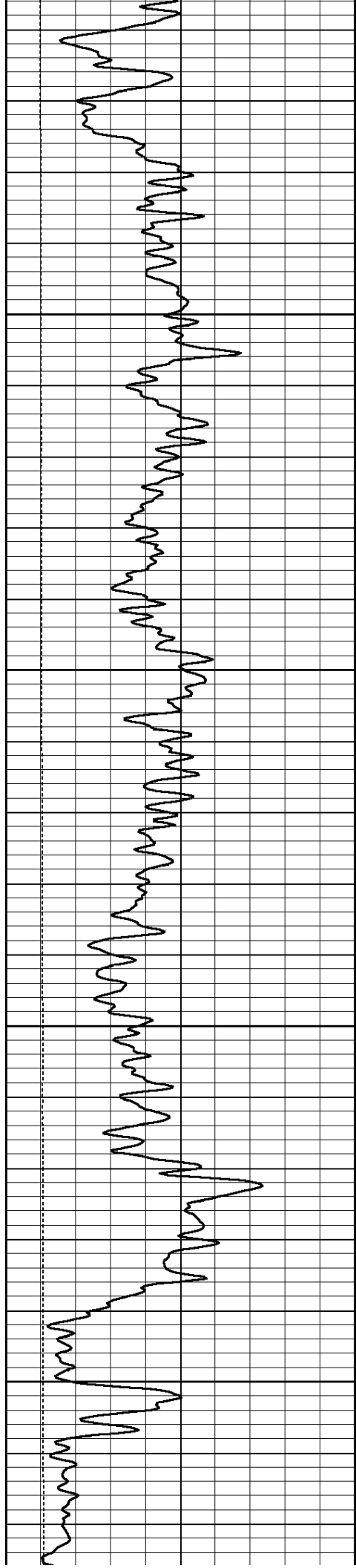
700

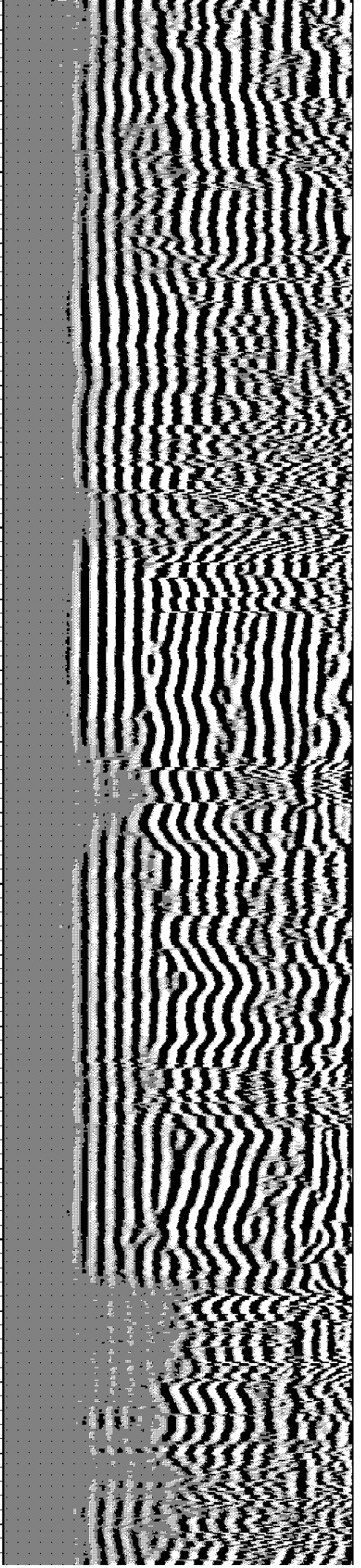
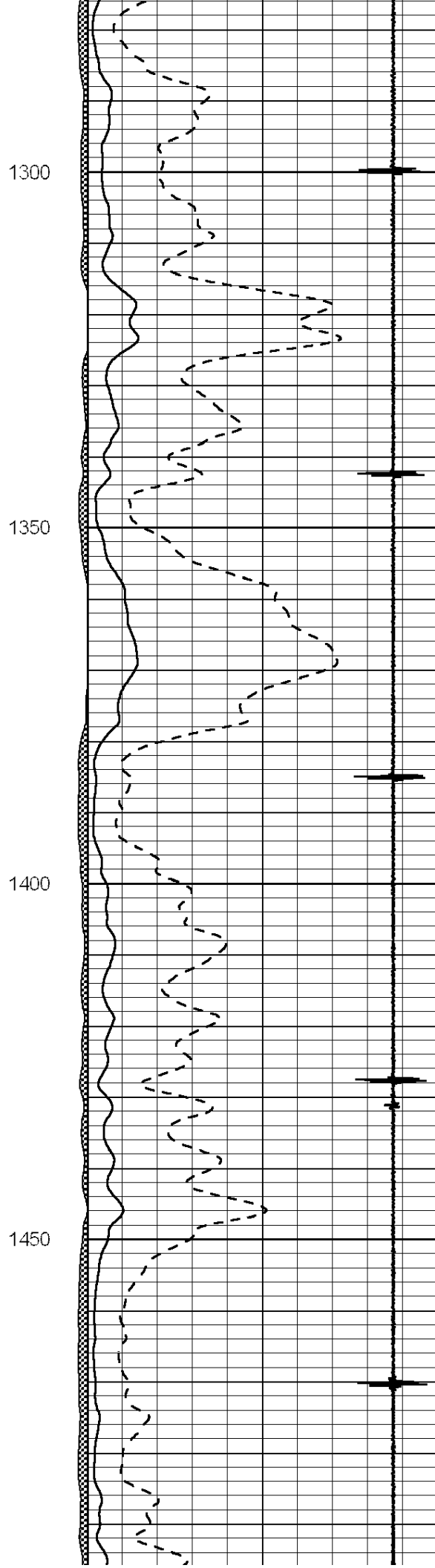
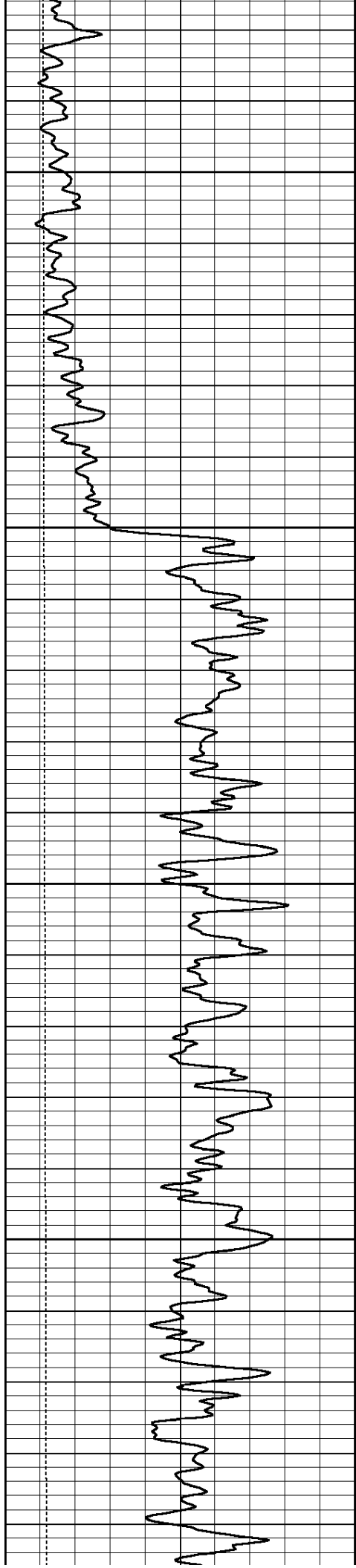
750

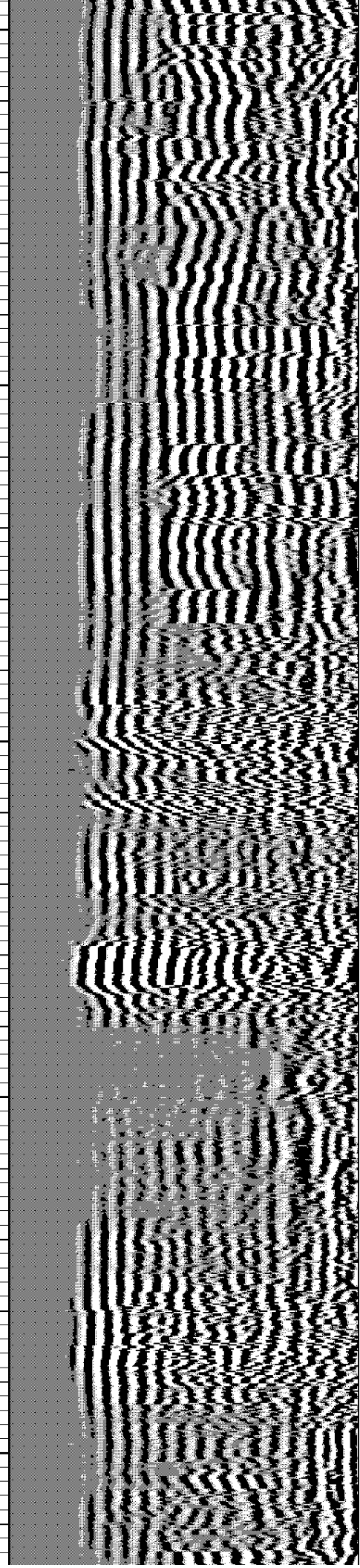
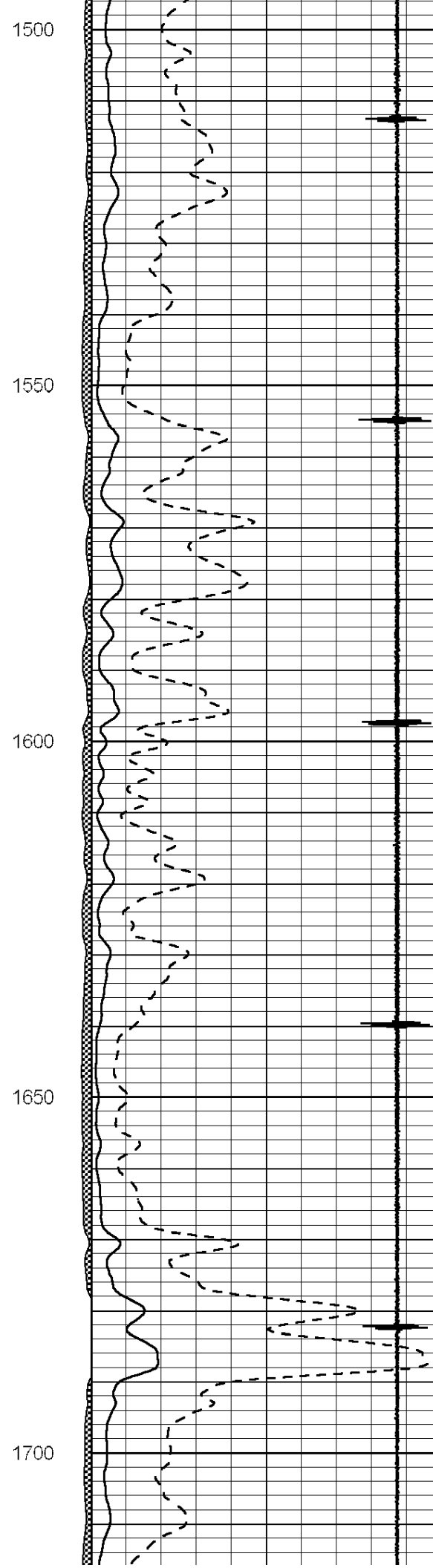
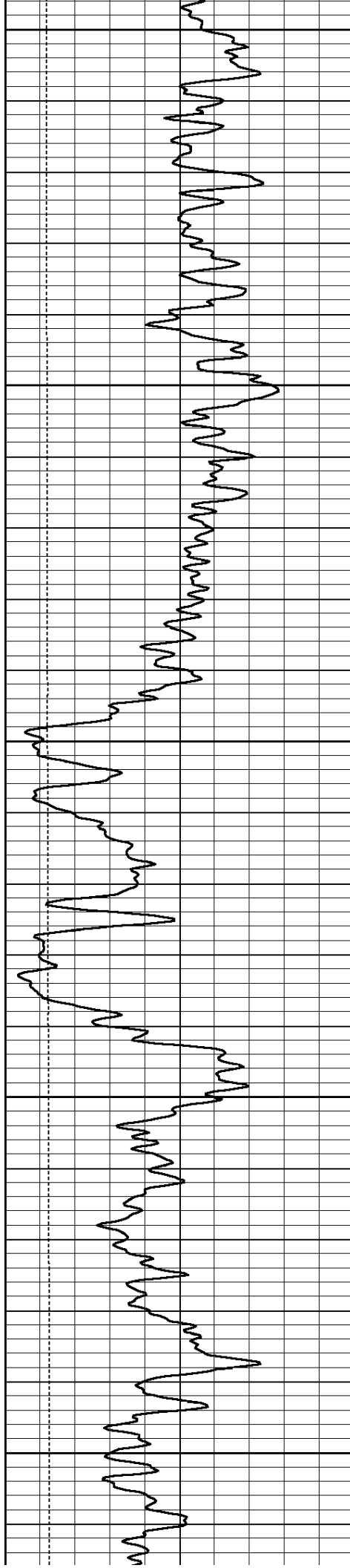
800

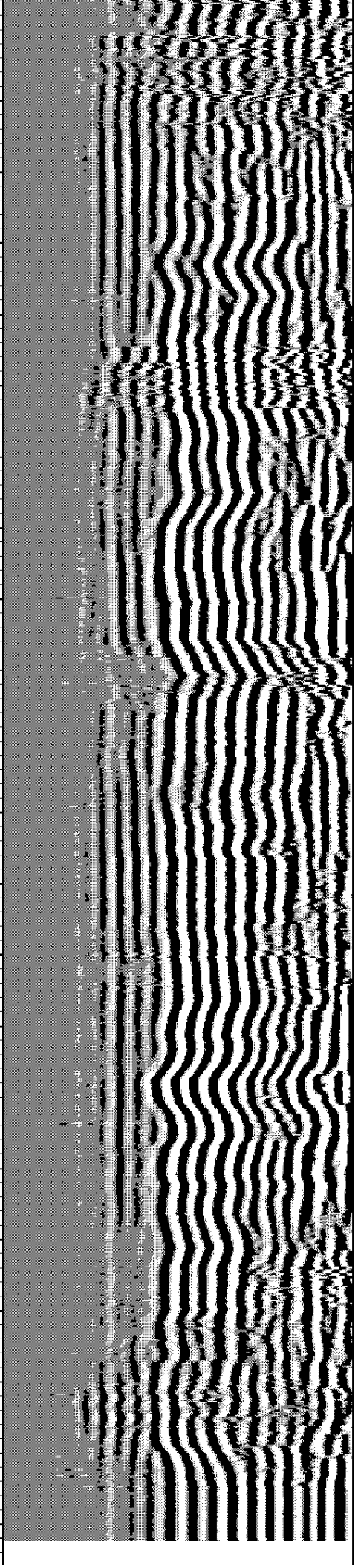
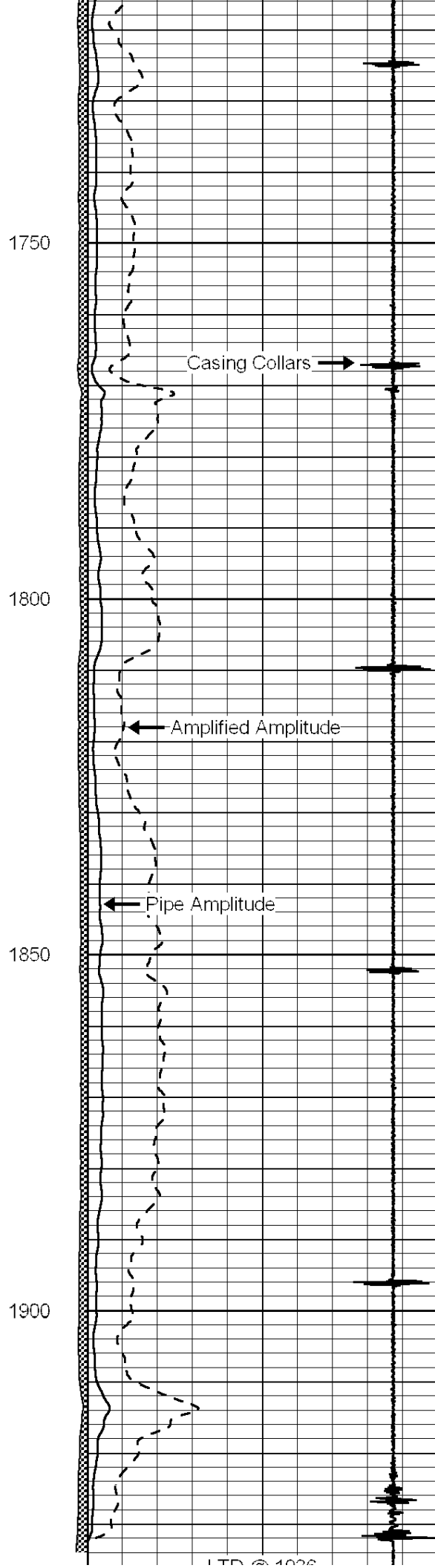
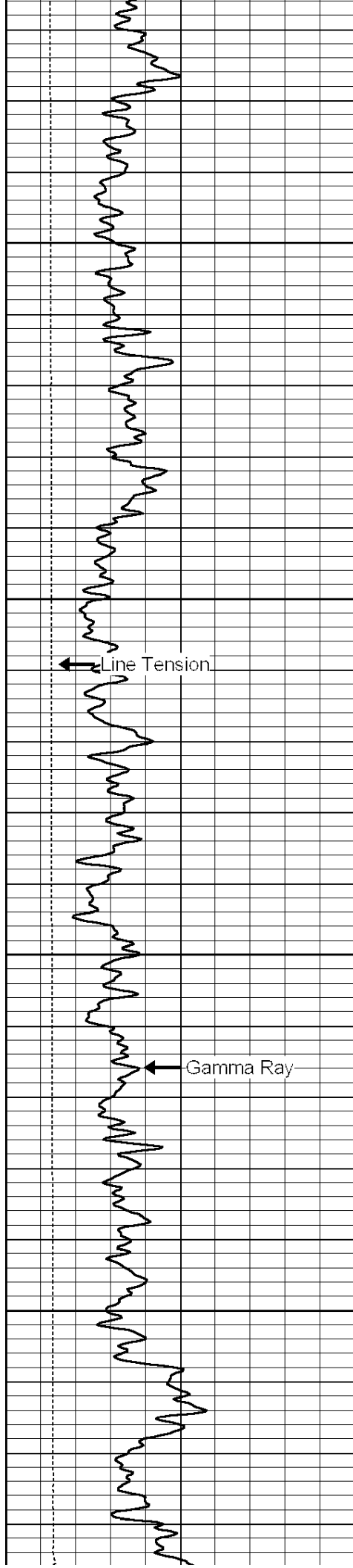












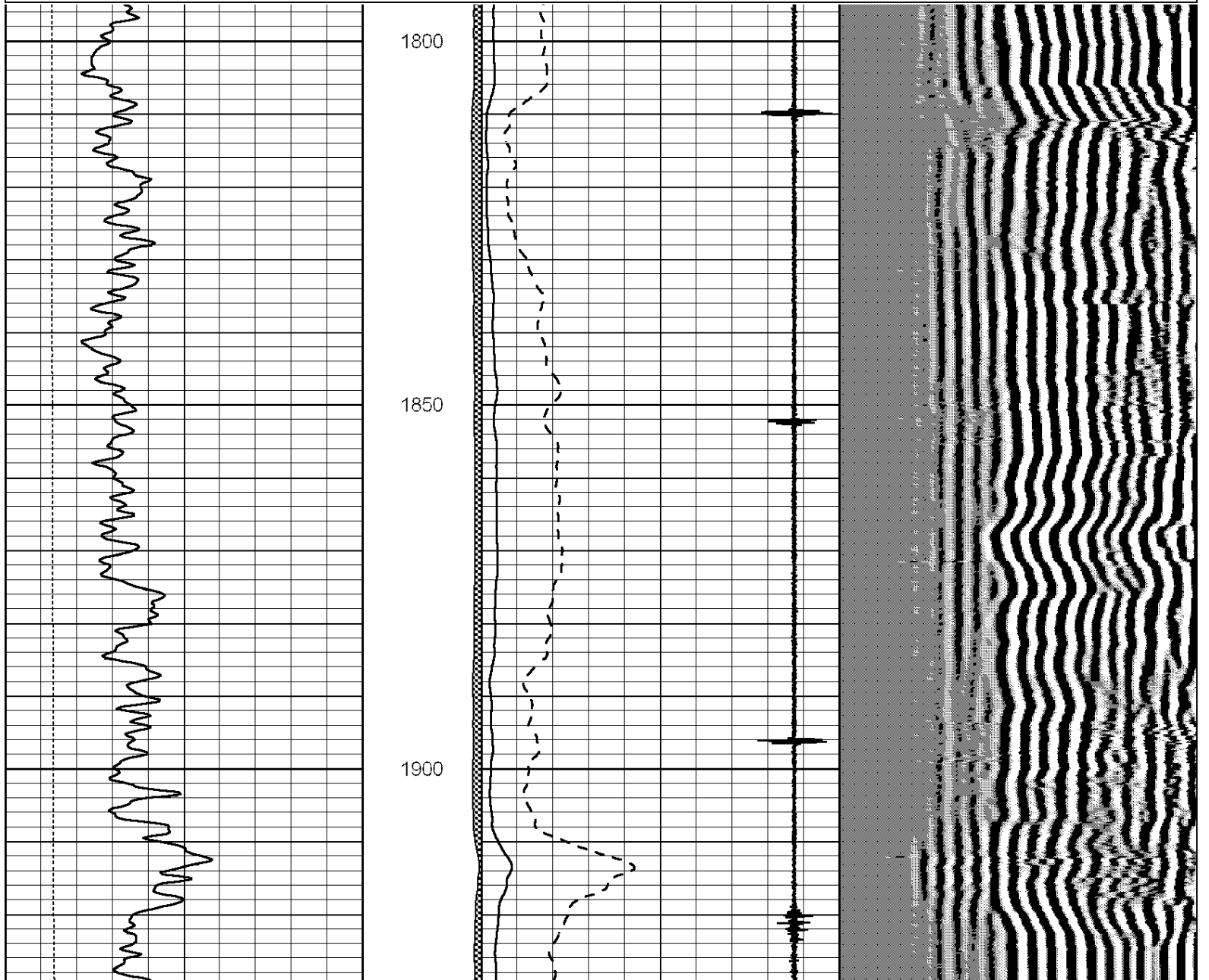
0	GR (GAPI)	150	AMP3	0	Amplitude (mV)	100	200	Variable Density	1200
0	LTEN (lb)	5000	(mV)	0	Amplified Amplitude (mV)	20			
			-100 10	7	Collar Locator	-1			

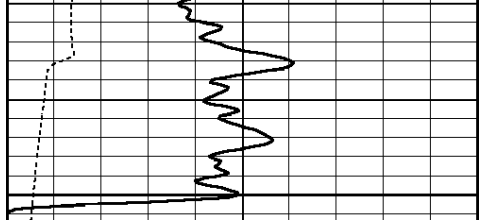


Repeat Section

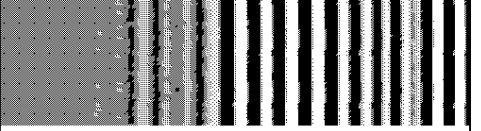
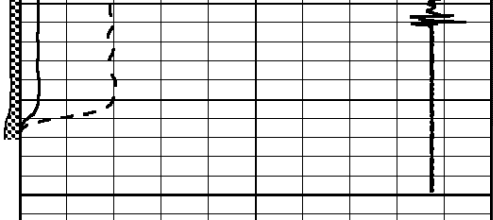
Database File: larsen-marit2-24.db
 Dataset Pathname: grcbl/pass2
 Presentation Format: cbl dig
 Dataset Creation: Fri Mar 11 13:39:43 2011 by Log Std Casedhole 10081
 Charted by: Depth in Feet scaled 1:240

0	GR (GAPI)	150	AMP3	0	Amplitude (mV)	100	200	Variable Density	1200
0	LTEN (lb)	5000	(mV)	0	Amplified Amplitude (mV)	20			
			-100 10	7	Collar Locator	-1			





1950



0	GR (GAPI)	150
0	LTEN (lb)	5000

AMP3	(mV)
-100	10

0	Amplitude (mV)	100
0	Amplified Amplitude (mV)	20
7	Collar Locator	-1

200	Variable Density	1200
-----	------------------	------