



**SUPERIOR
Hays,
Kansas**

**SONIC
LOG**

Company **MULL DRILLING COMPANY, INC.**
Well **TOKOI #1-21**
Field
County **NESS** State **KANSAS**

Company **MULL DRILLING CO., INC.**
Well **TOKOI #1-21**
Field
County **NESS**
State **KANSAS**

Location: **API # : 15-135-25229**
1158' FNL & 1846' FEL
SEC 21 TWP 16S RGE 26W
Permanent Datum **GROUND LEVEL** Elevation **2632**
Log Measured From **KELLY BUSHING 8' A.G.L.**
Drilling Measured From **KELLY BUSHING**
Other Services **CDL/CNL/PE DIL/MEL**
Elevation **K.B. 2640 D.F. G.L. 2632**

Date	7-14-11
Run Number	TWO
Depth Driller	4640
Depth Logger	4640
Bottom Logged Interval	4633
Top Log Interval	220
Casing Driller	227
Casing Logger	227
Bit Size	7.875
Type Fluid in Hole	CHEMICAL MUD
Density / Viscosity	9.4 / 57
pH / Fluid Loss	9.0 / 8.8
Source of Sample	FLOWLINE
Rm @ Meas. Temp	1.00 @ 87F
Rmf @ Meas. Temp	0.75 @ 87F
Rmc @ Meas. Temp	1.20 @ 87F
Source of Rmf / Rmc	MEASURED
Rm @ BHT	.720 @ 121F
Time Circulation Stopped	2 HOURS
Time Logger on Bottom	12:30 P.M.
Maximum Recorded Temperature	121F
Equipment Number	860
Location	HAYS, KS.
Recorded By	RUPP
Witnessed By	BOB STOLZLE

<<< Fold Here >>>

All interpretations are opinions based on inferences from electrical or other measurements and we cannot and do not guarantee the accuracy or correctness of any interpretation, and we shall not, except in the case of gross or willful negligence on our part, be liable or responsible for any loss, costs, damages, or expenses incurred or sustained by anyone resulting from any interpretation made by any of our officers, agents or employees. These interpretations are also subject to our general terms and conditions set out in our current Price Schedule.

Comments

SUPERIOR WELL SERVICES
785-628-6395
THANK YOU FOR YOUR BUSINESS
DIRECTIONS: UTICA, WEST EDGE TO RD. "D", 1N TO RD. #270, 1 1/2W, S INTO.

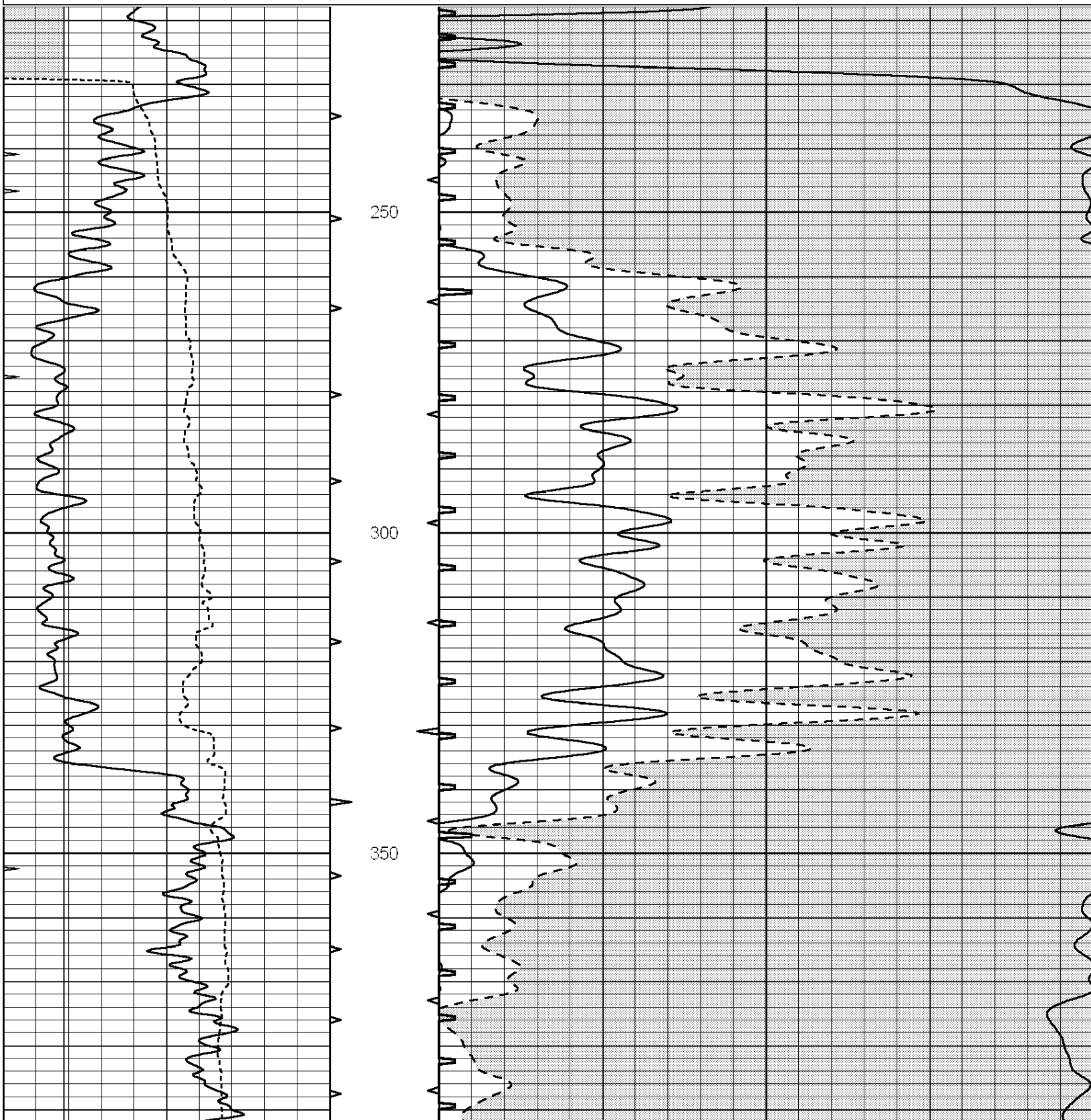


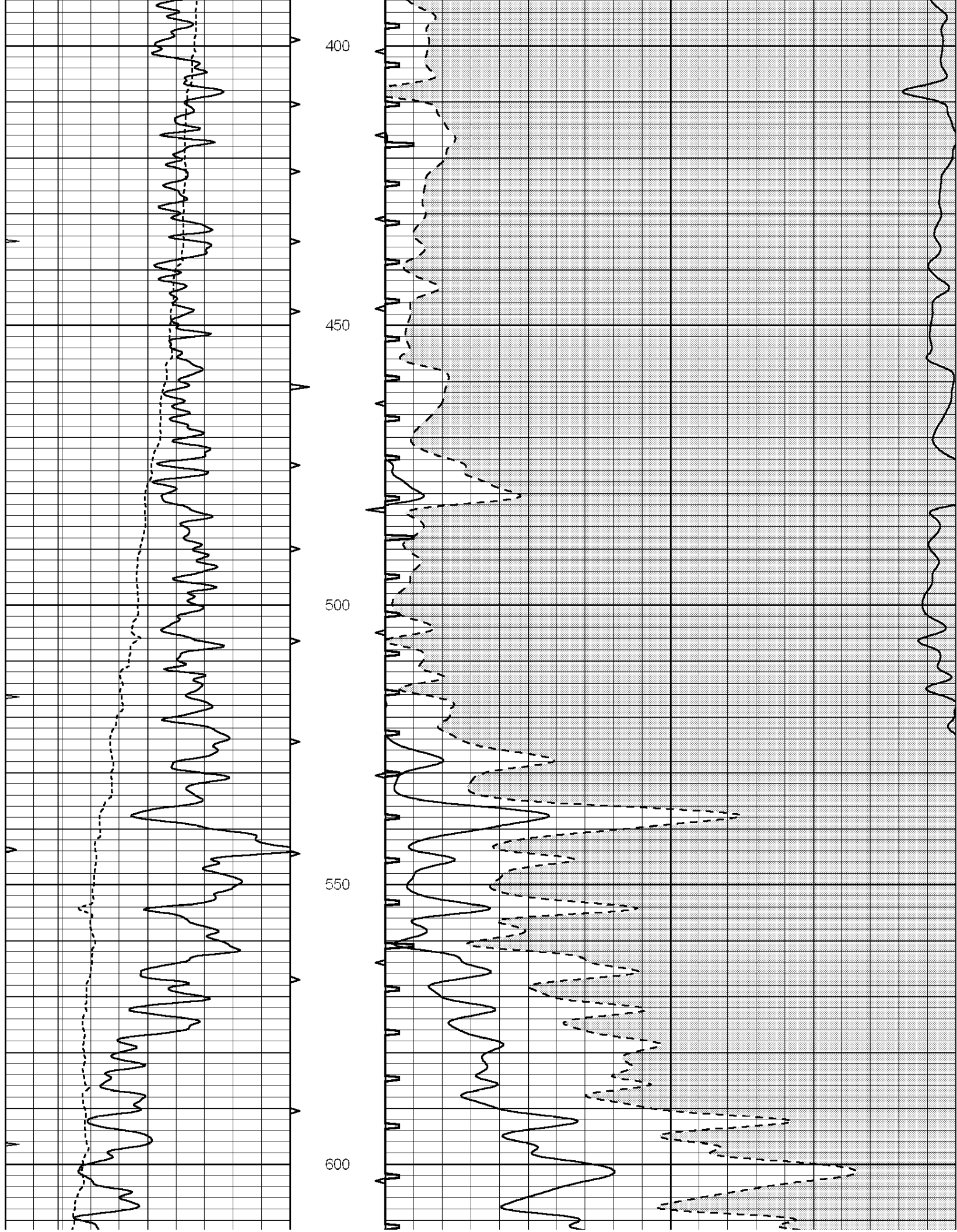
**SUPERIOR
Hays,
Kansas**

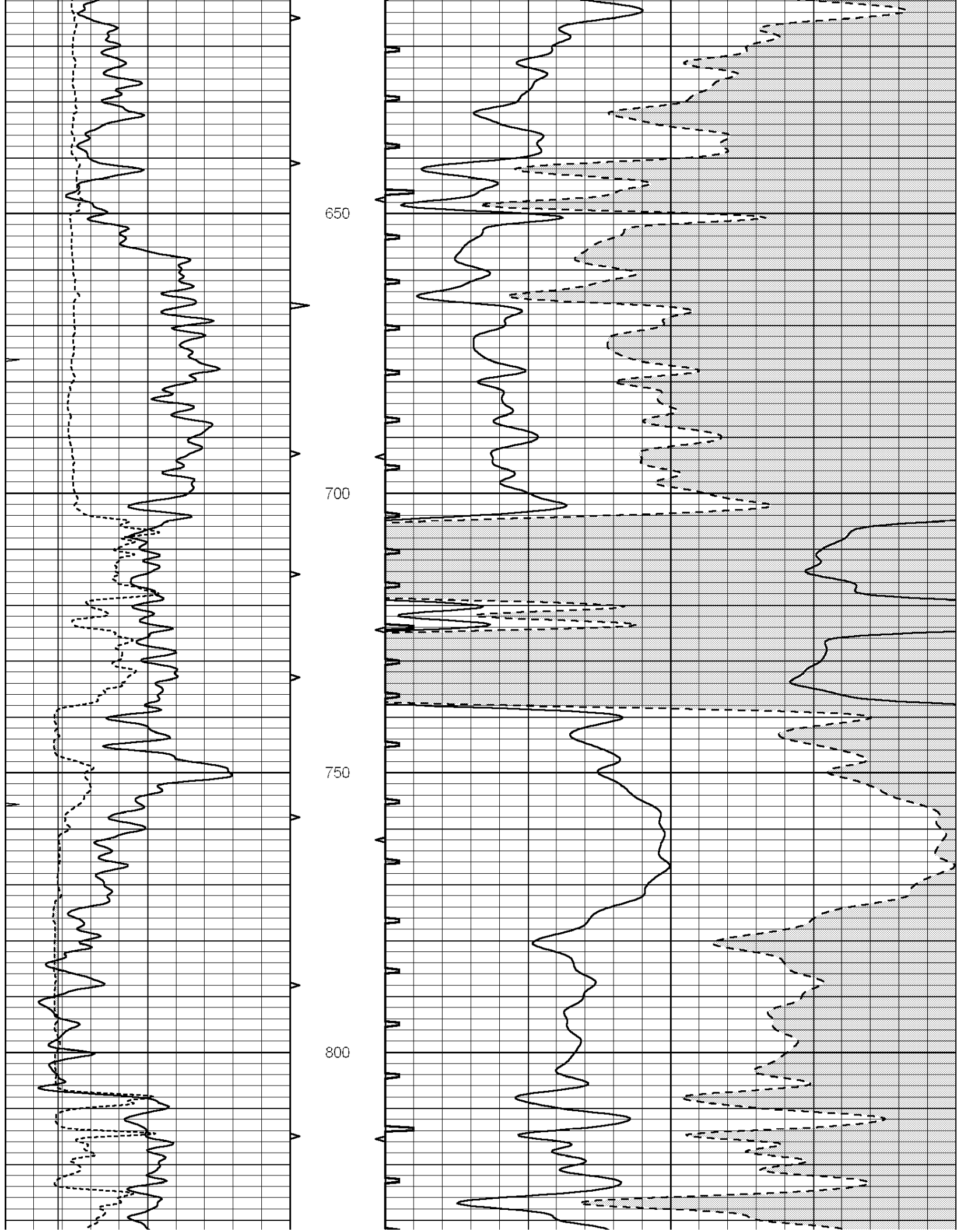
MAIN SECTION

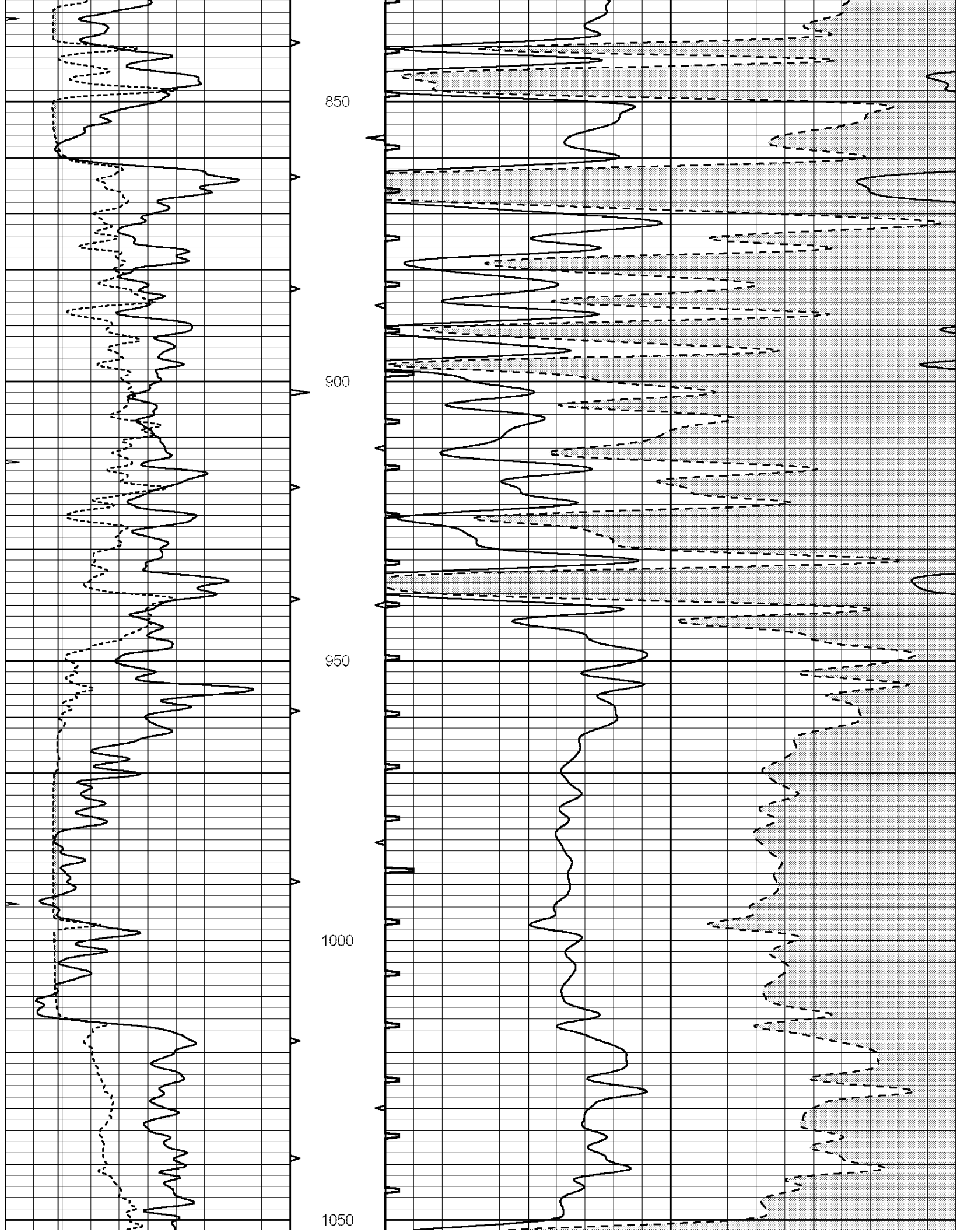
Database File: 007329pdn.db
 Dataset Pathname: pass5.2
 Presentation Format: slt
 Dataset Creation: Thu Jul 14 16:35:04 2011
 Charted by: Depth in Feet scaled 1:240

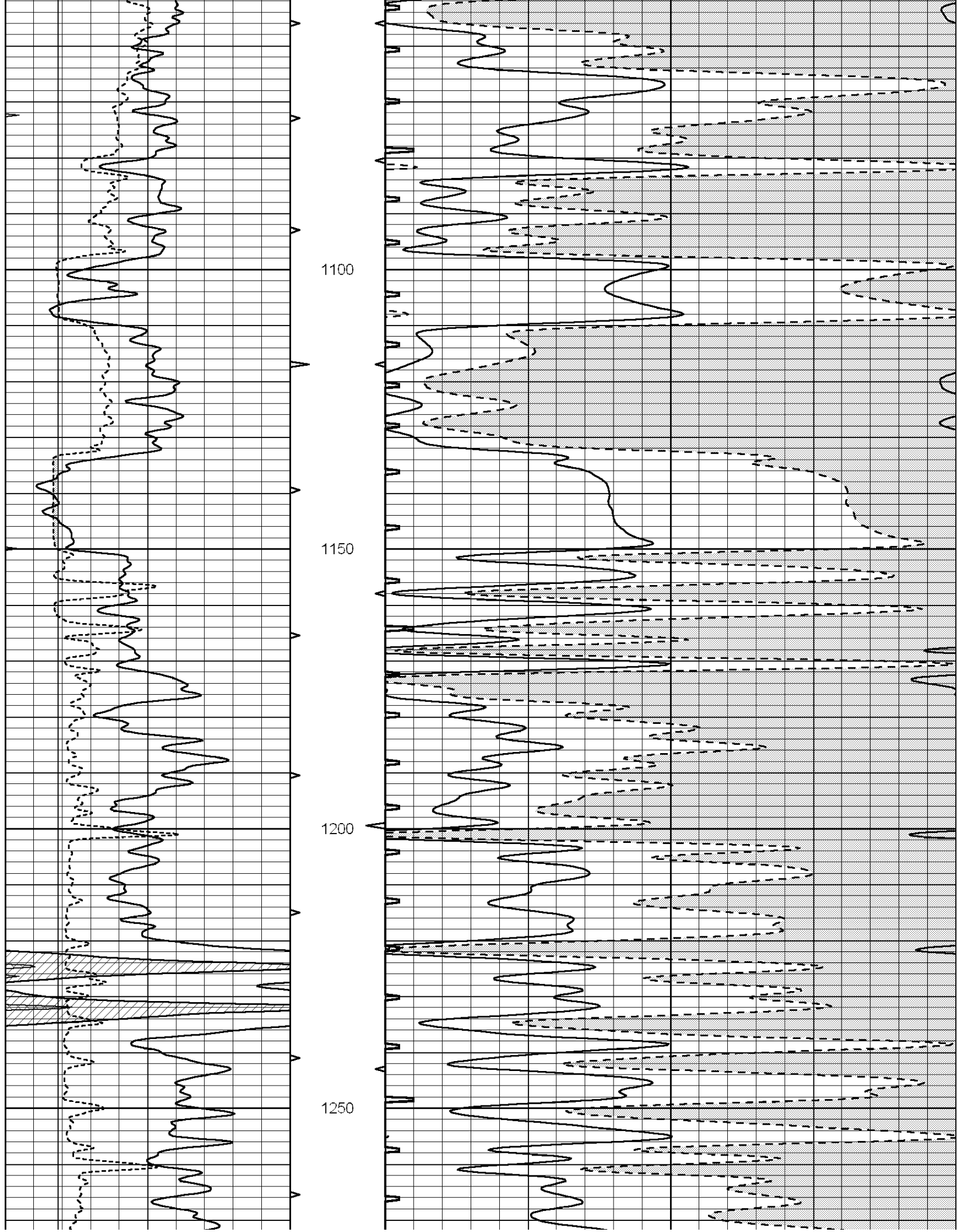
0	GAMMA RAY (GAPI)	150	ABHV	140	DELTA TIME (usec/ft)	40
6	MELCAL (in)	16	10 (ft3)	0 30	SONIC POROSITY (pu)	-10
0	MINMK	20	TBHV	0	ITT (msec)	20
			0 (ft3)	10		

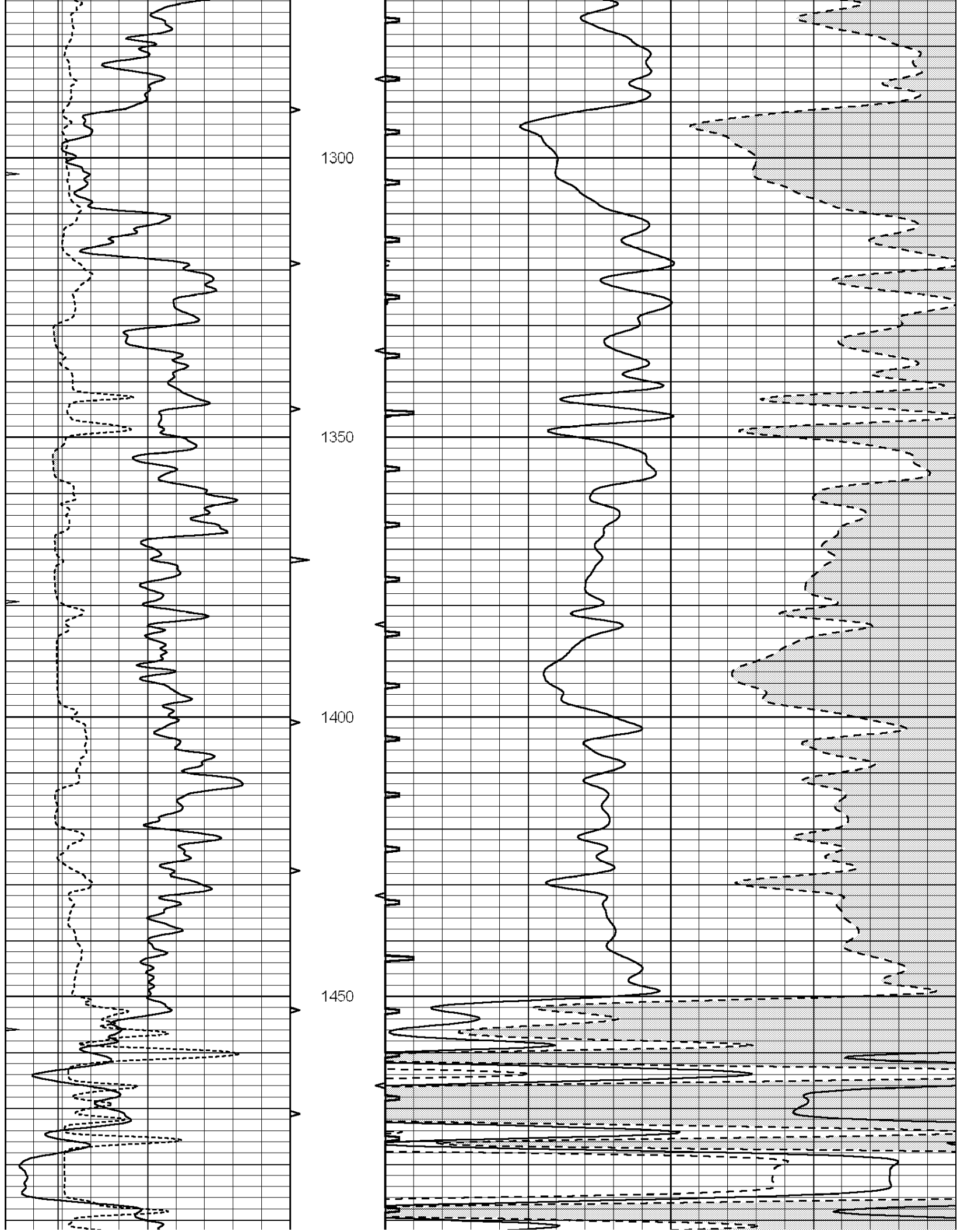


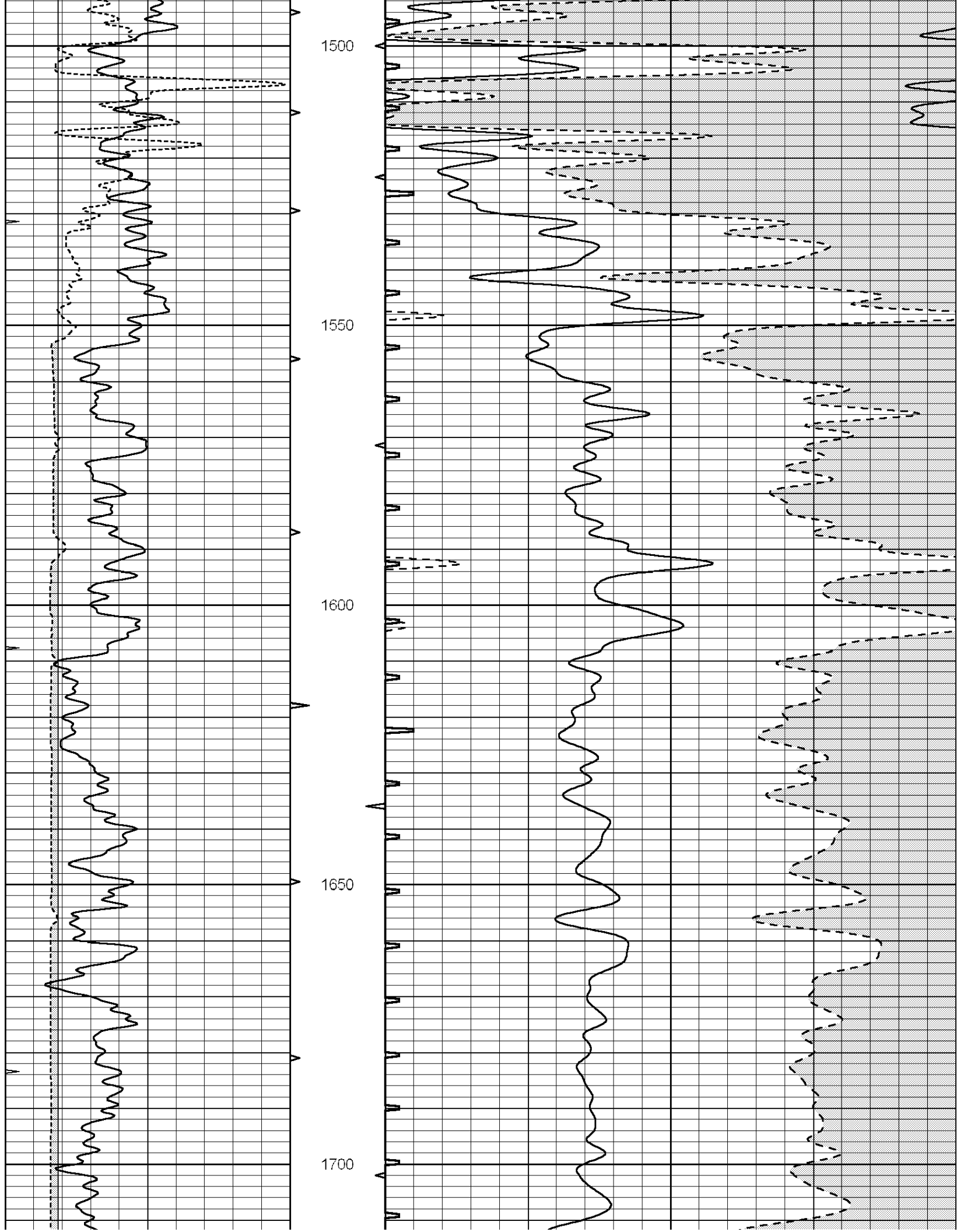


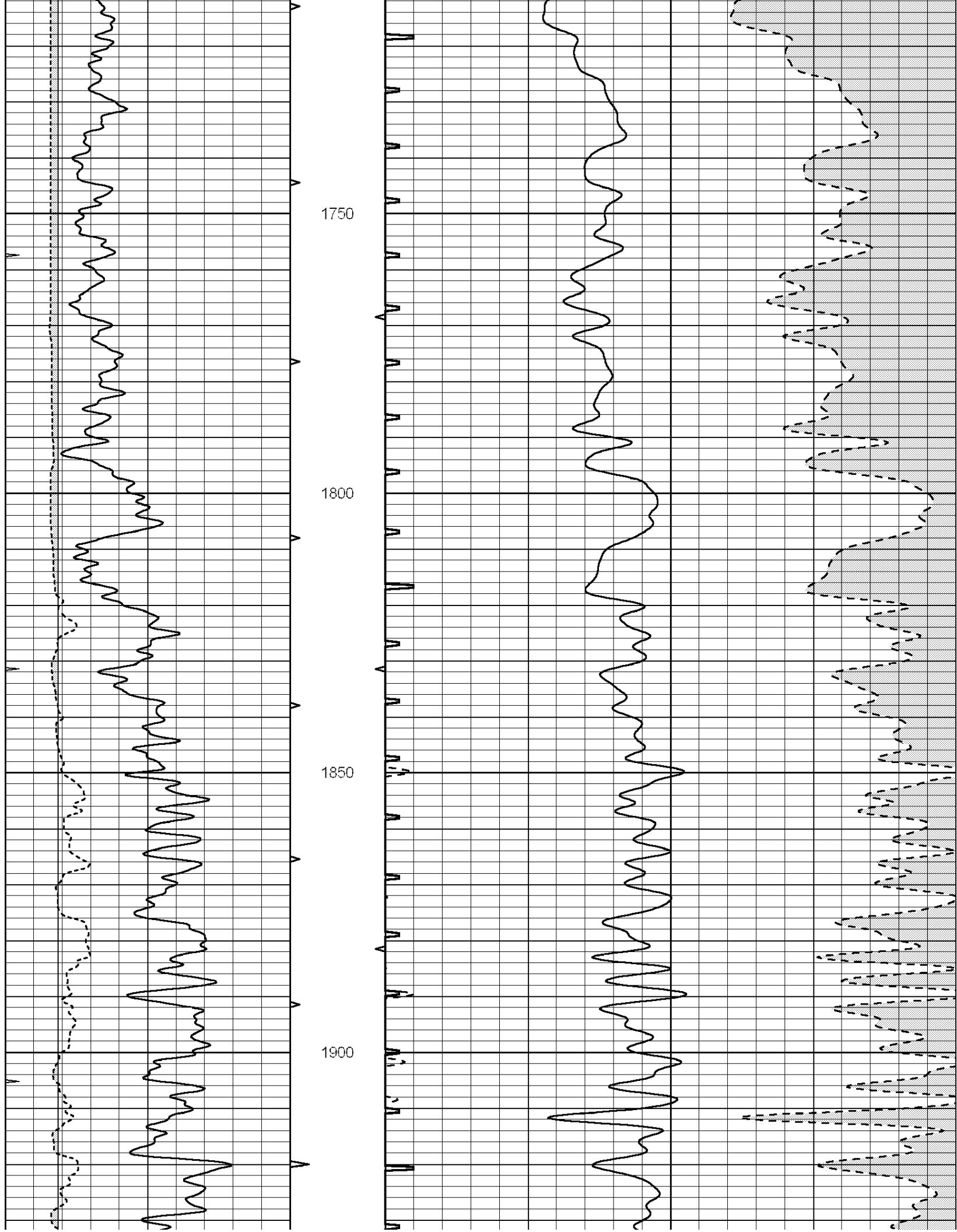


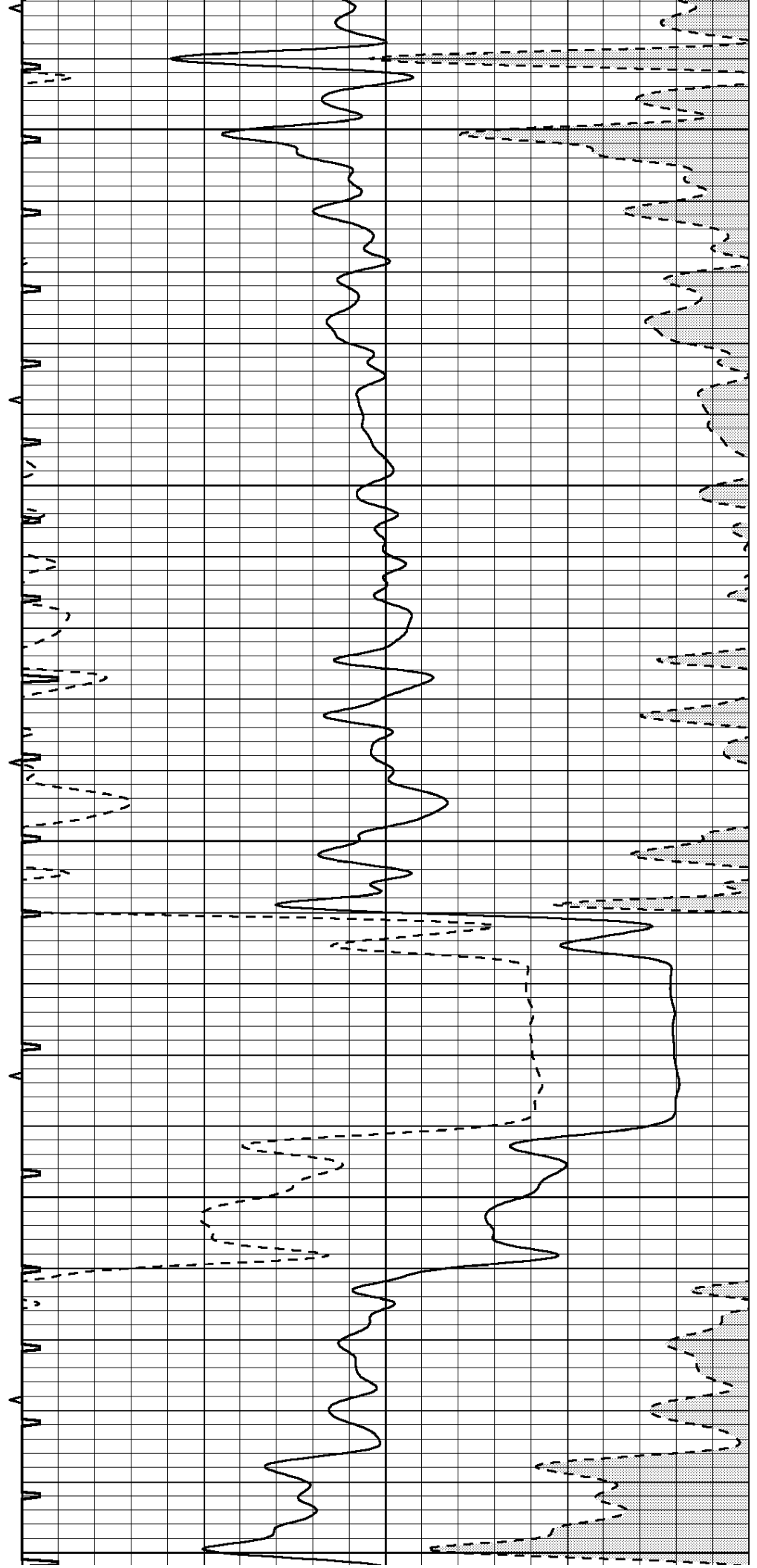
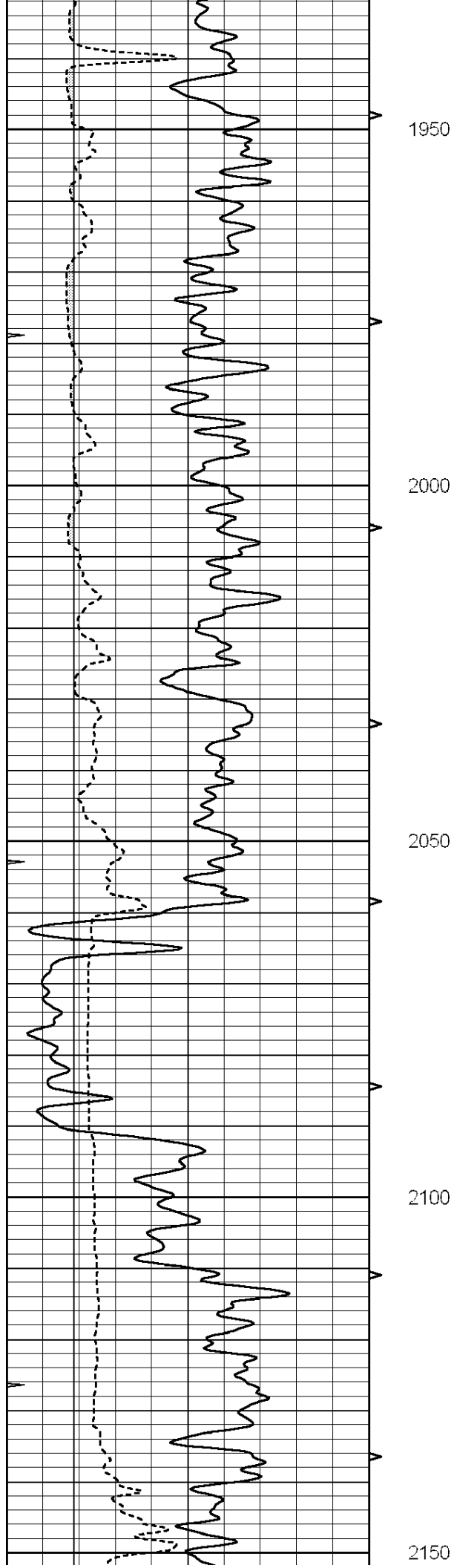


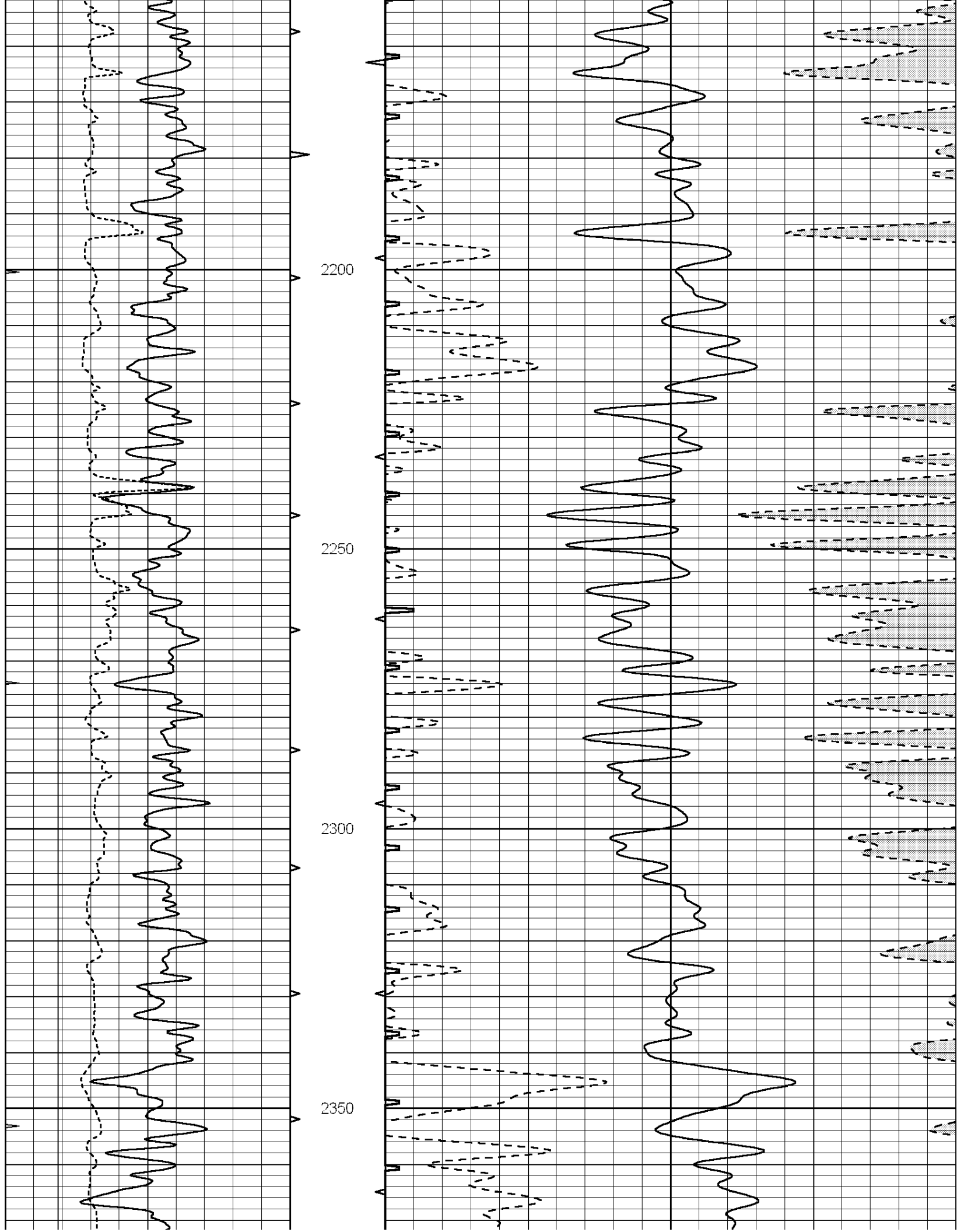


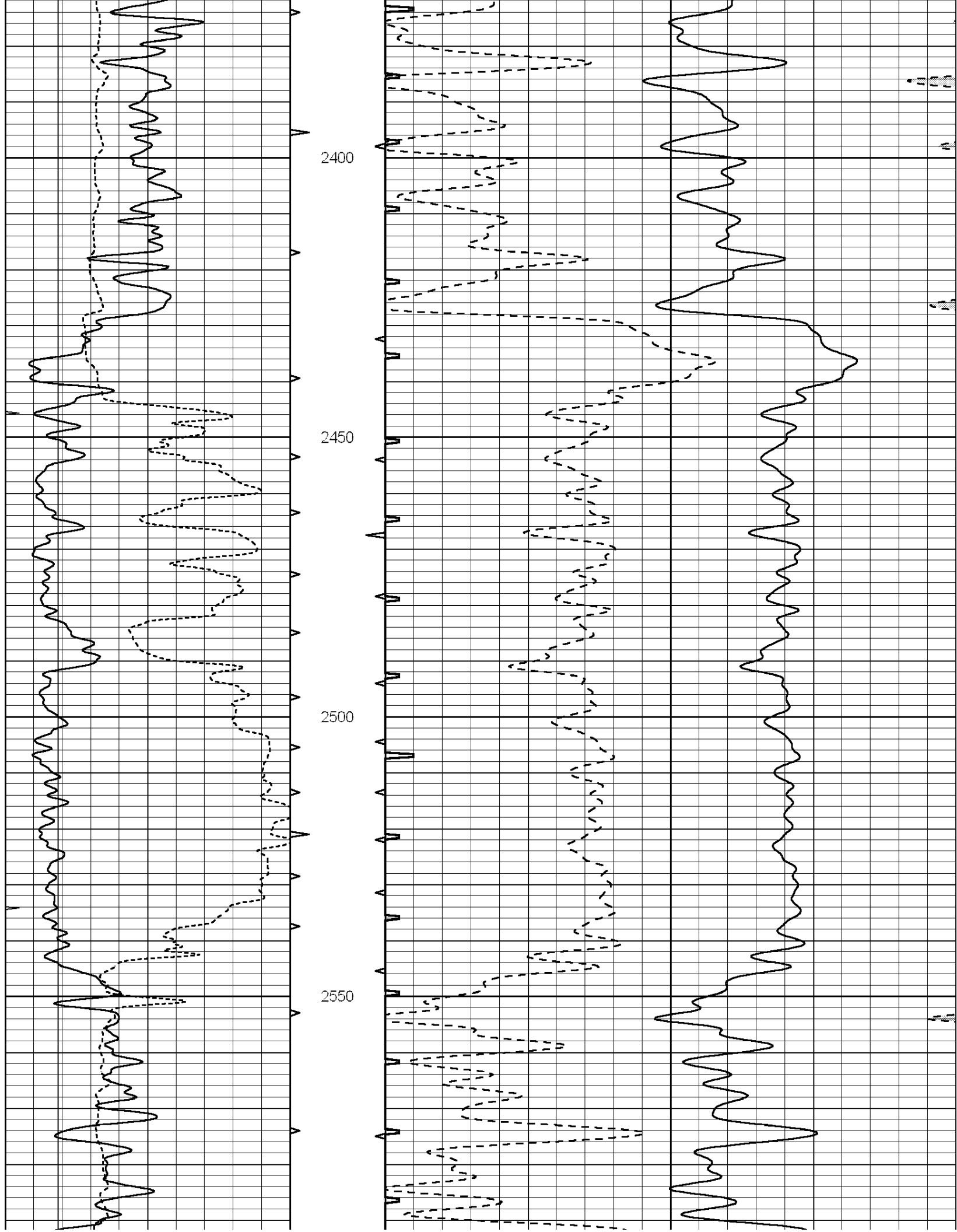


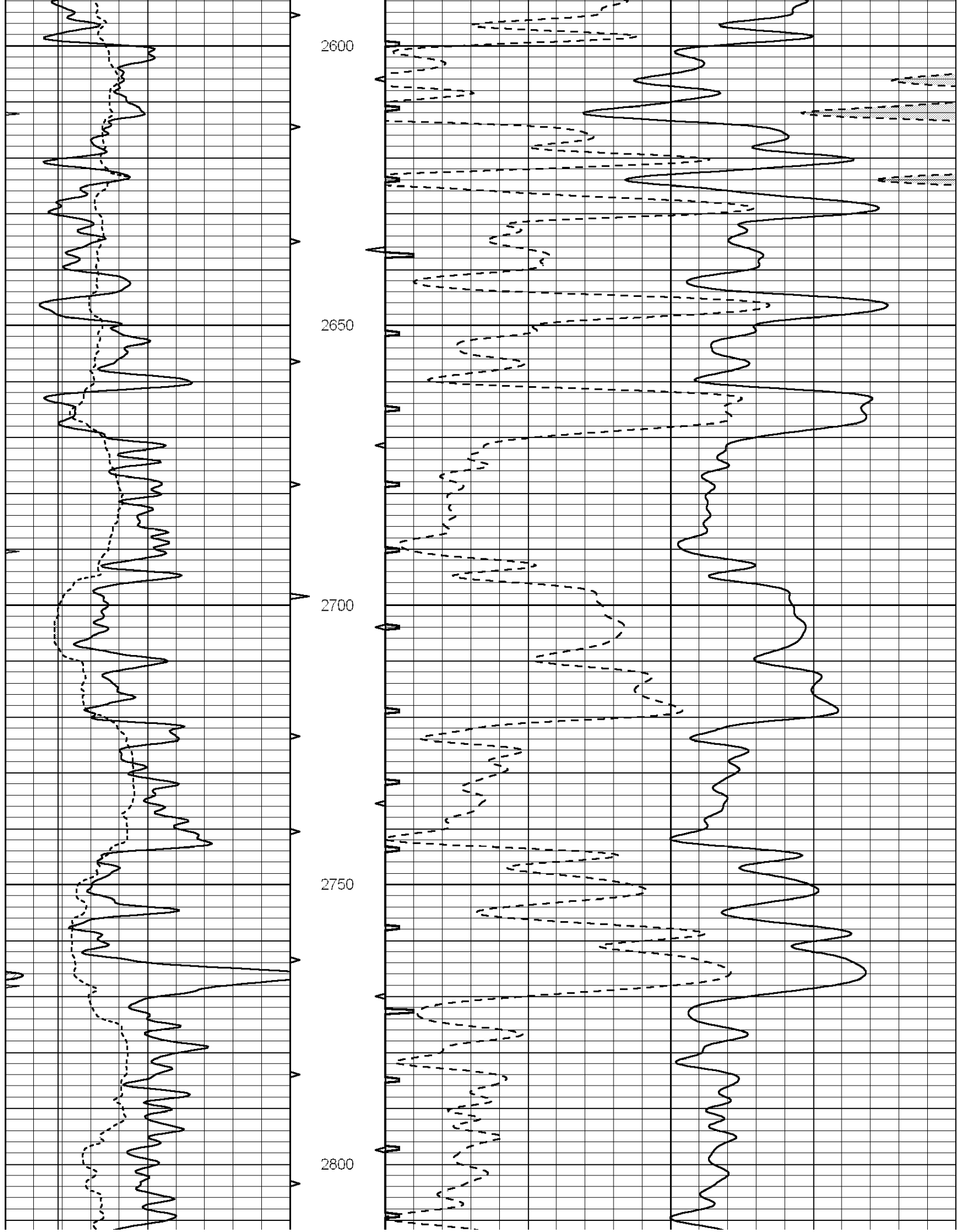


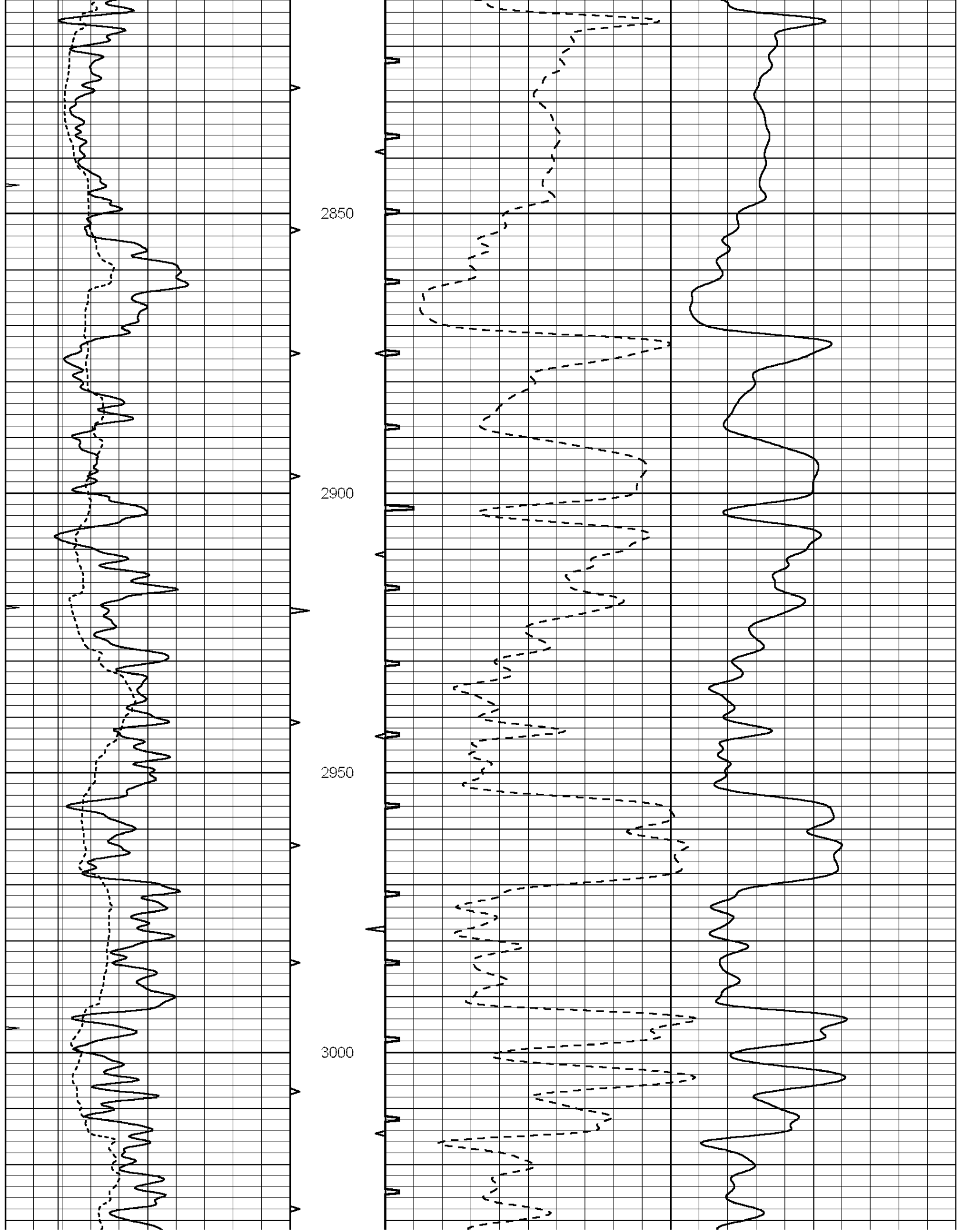


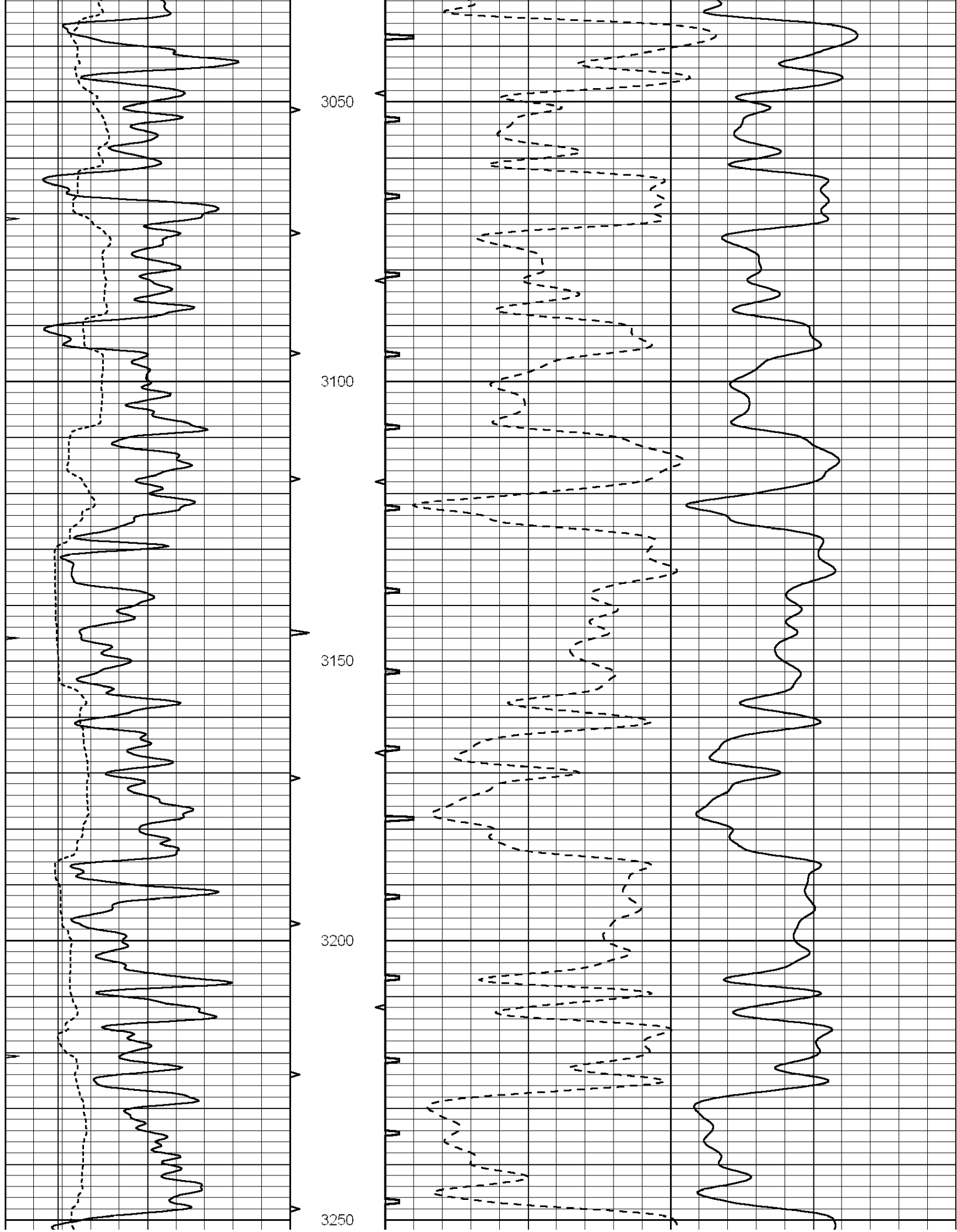


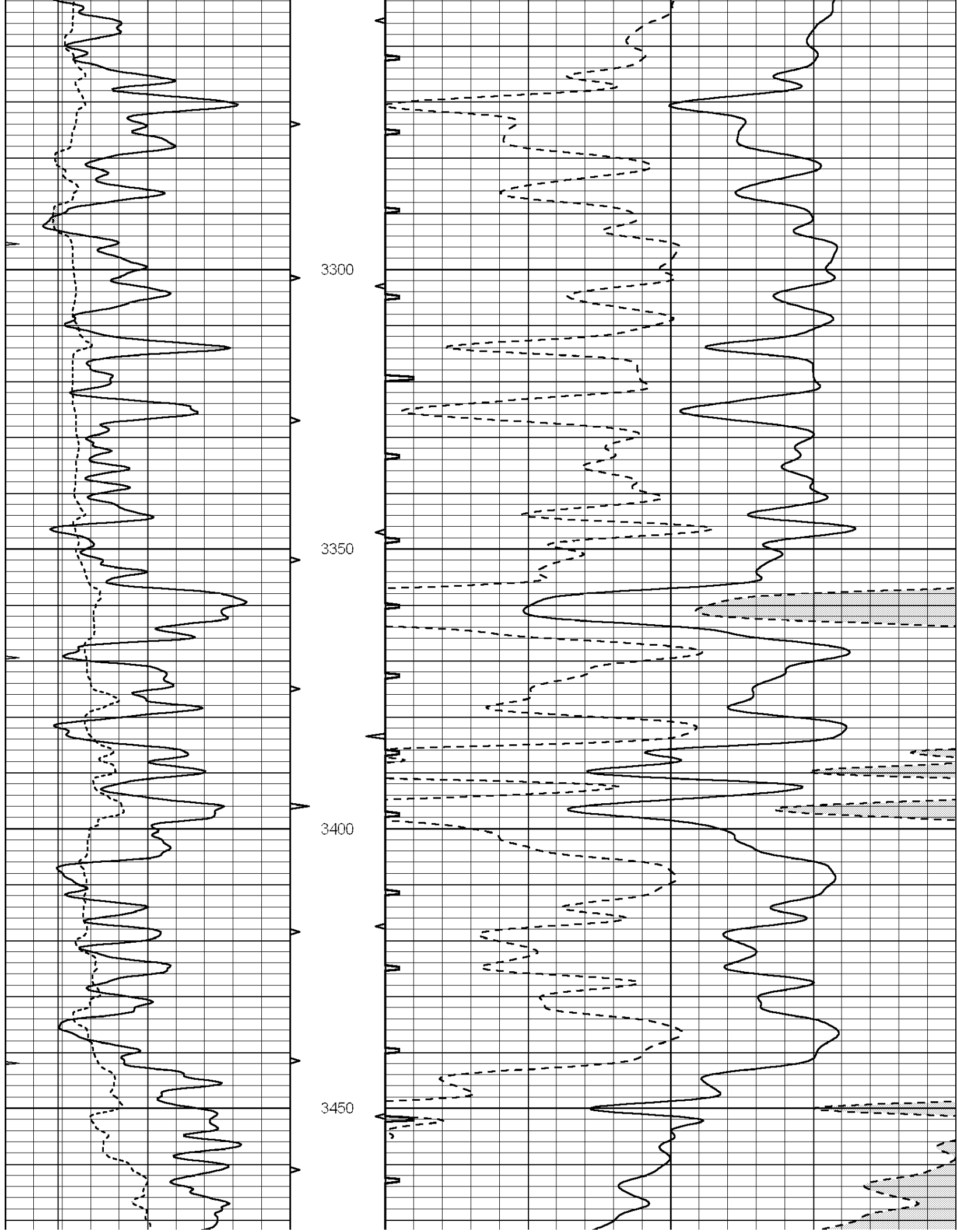


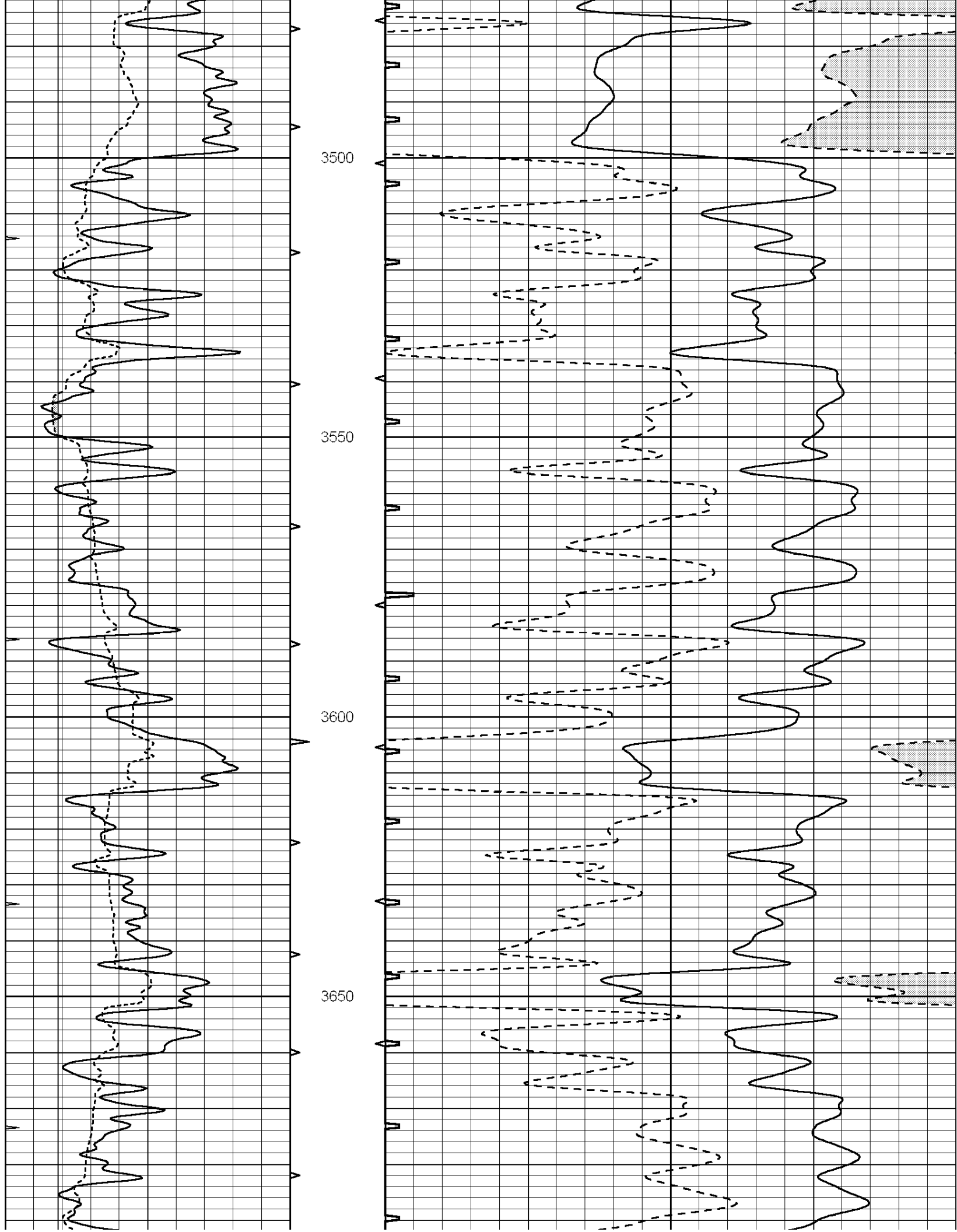


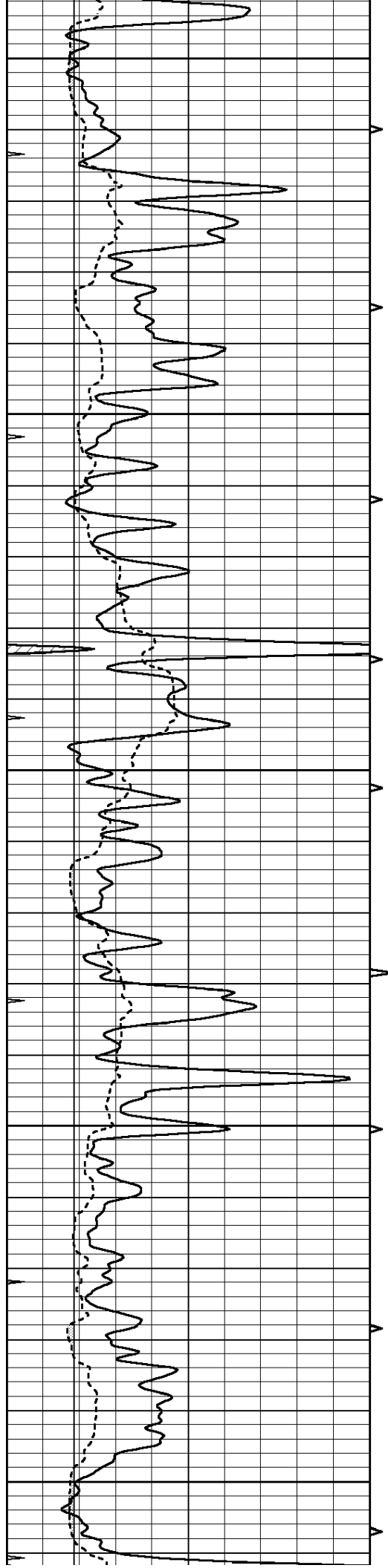












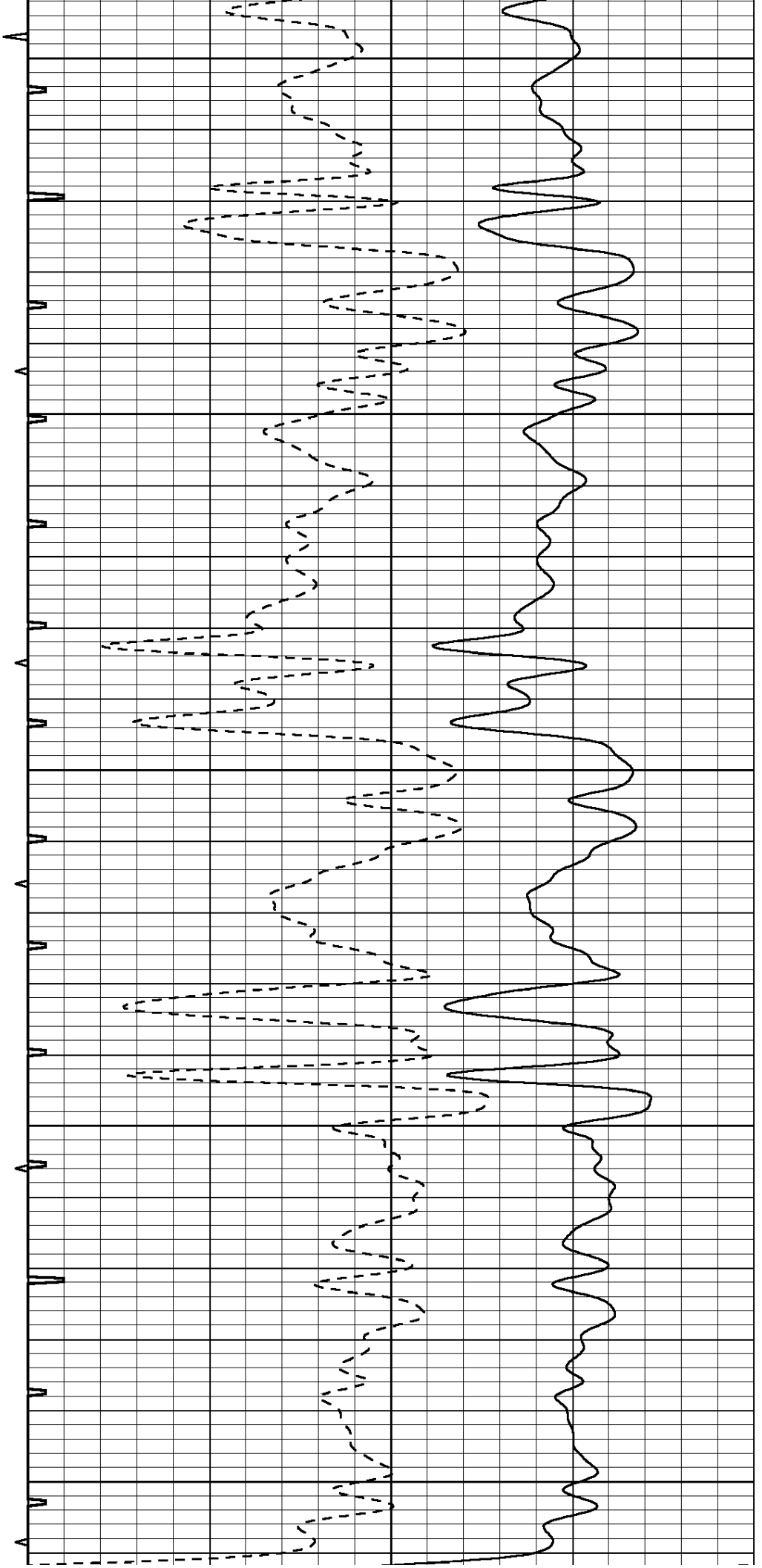
3700

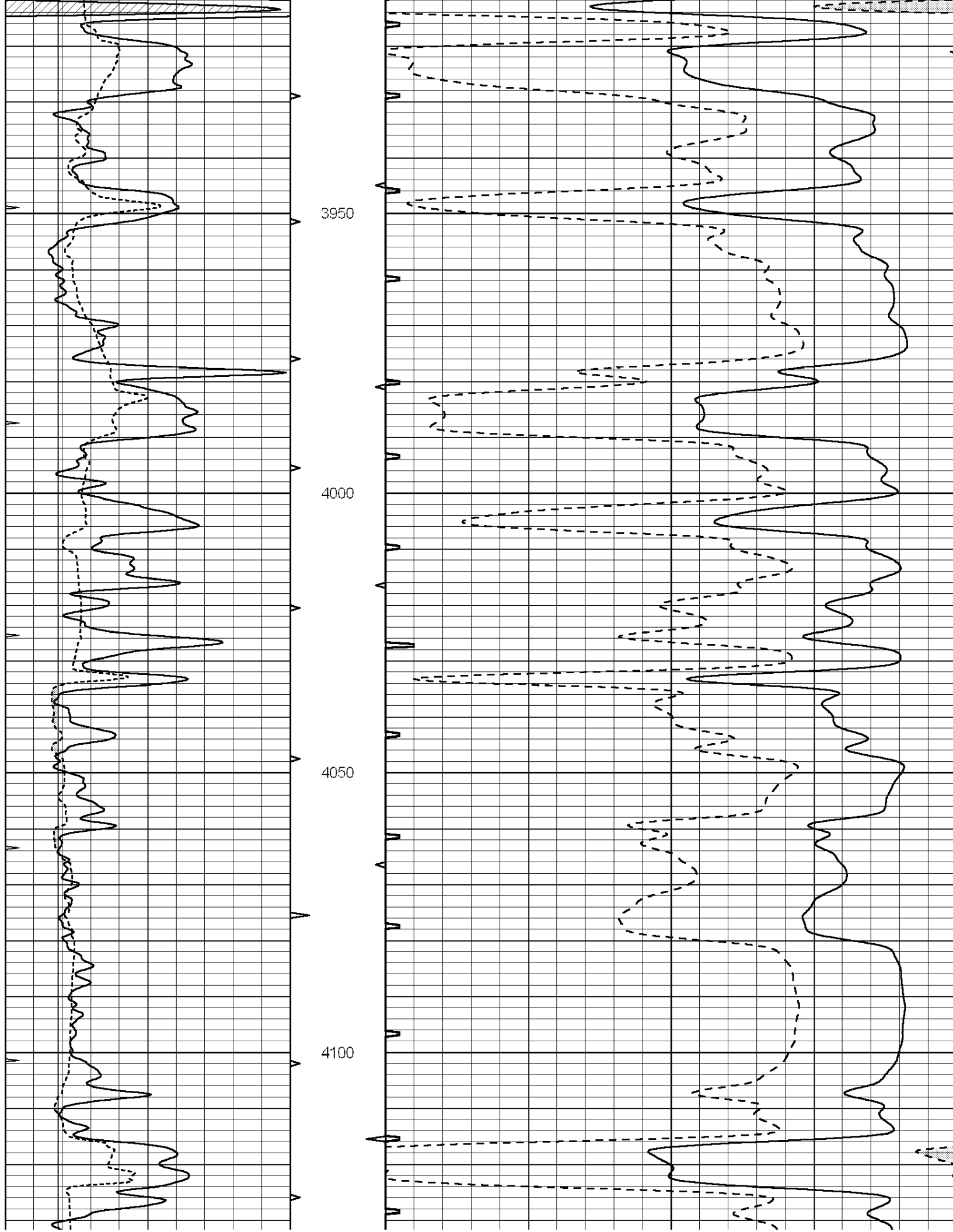
3750

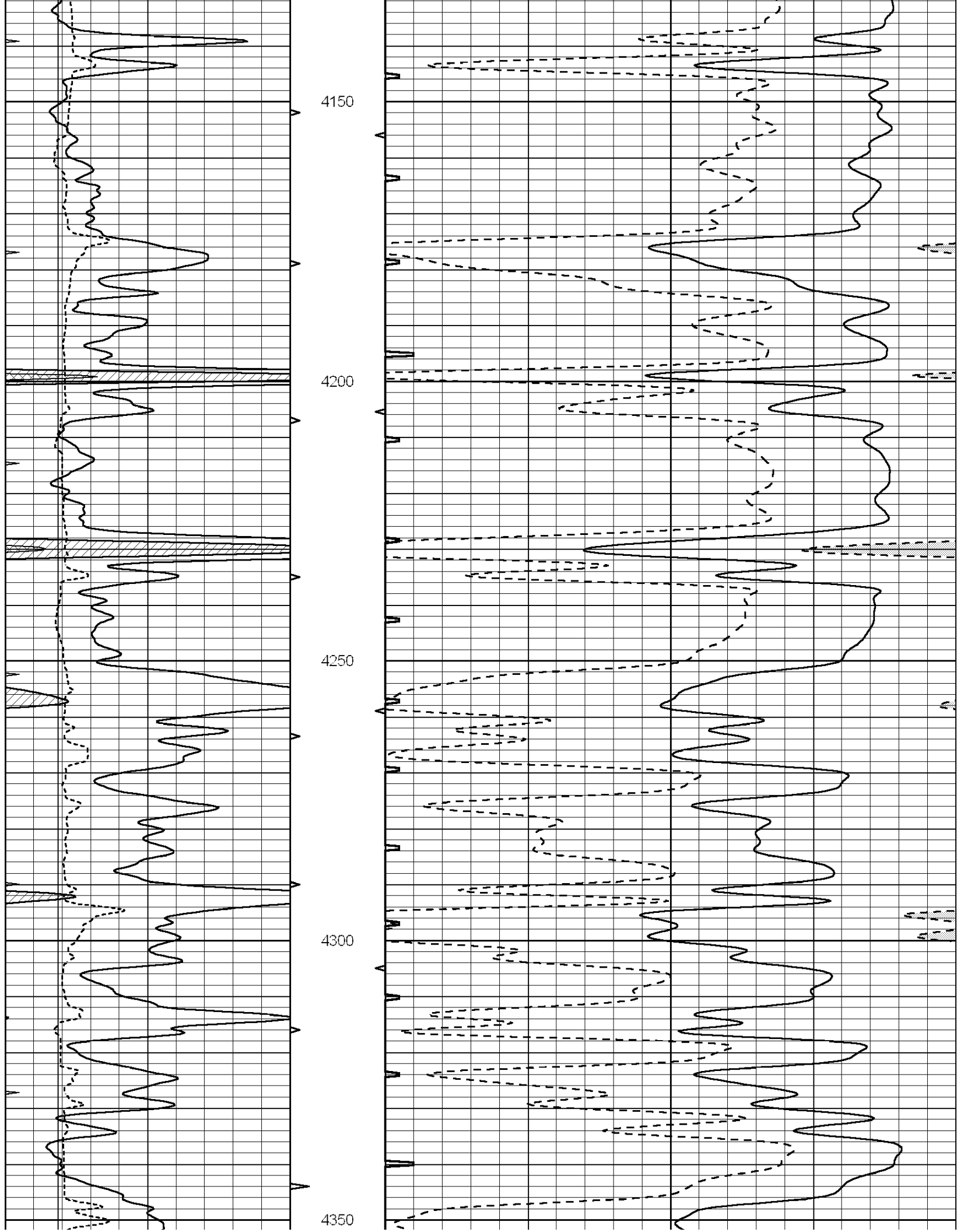
3800

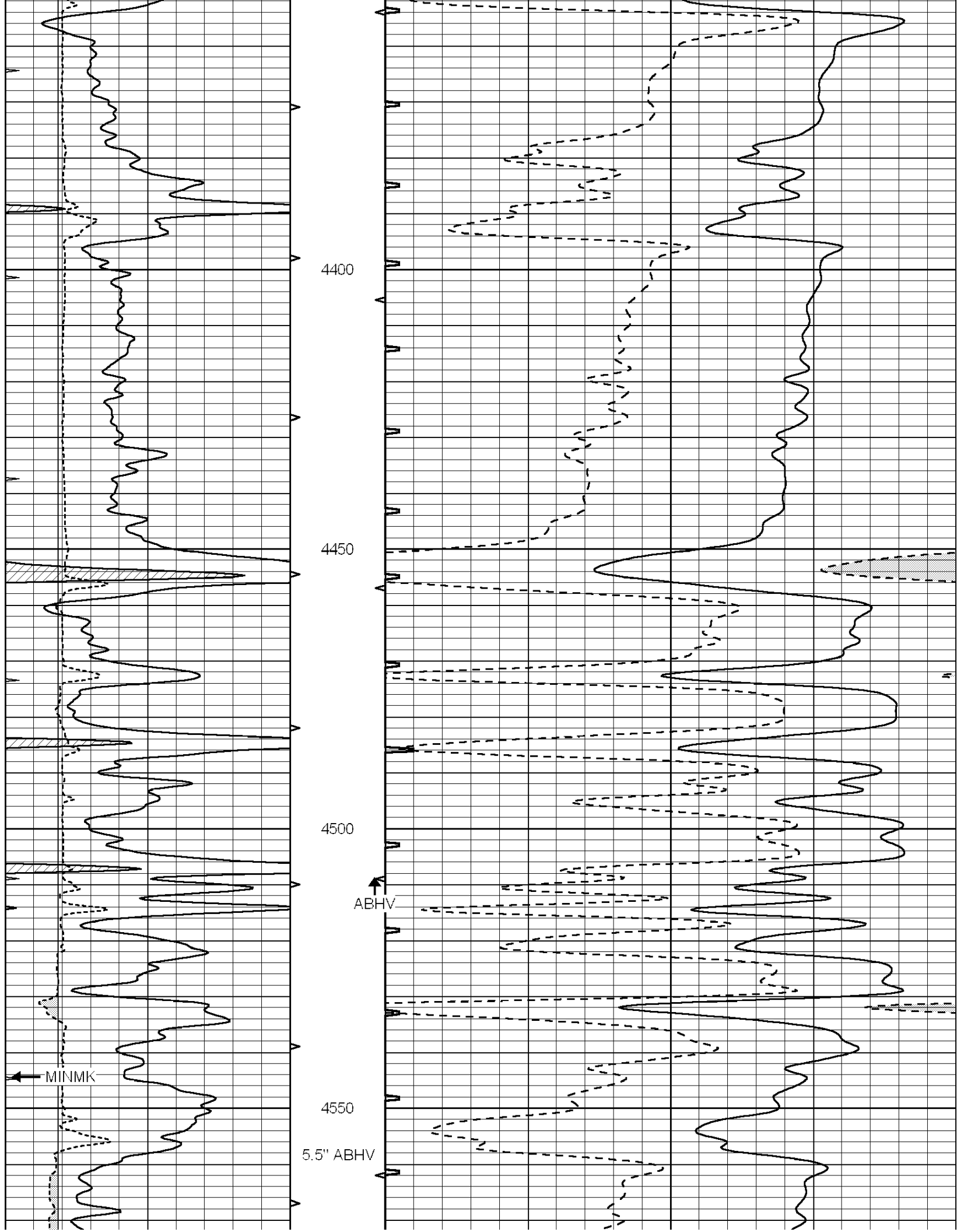
3850

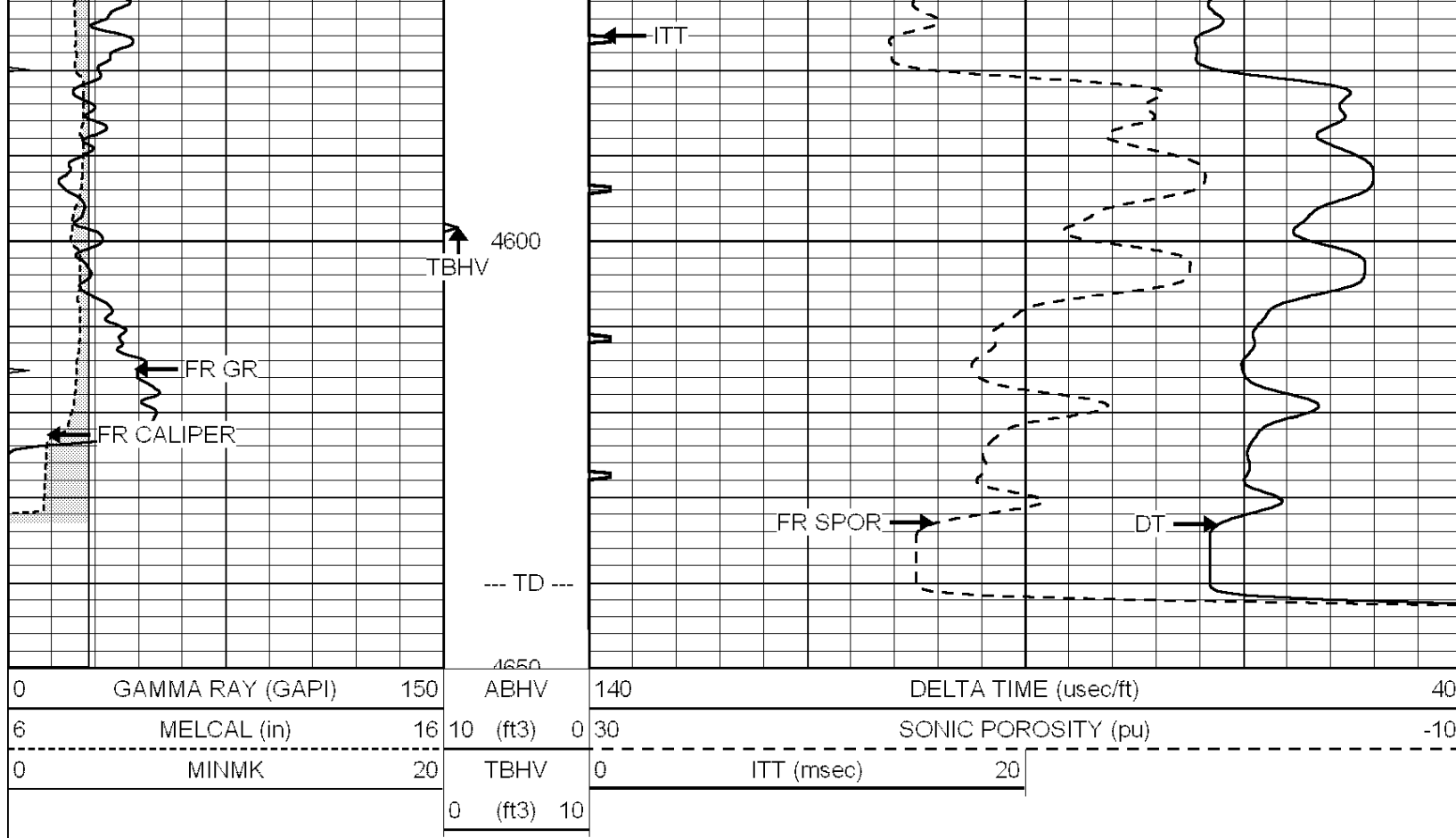
3900









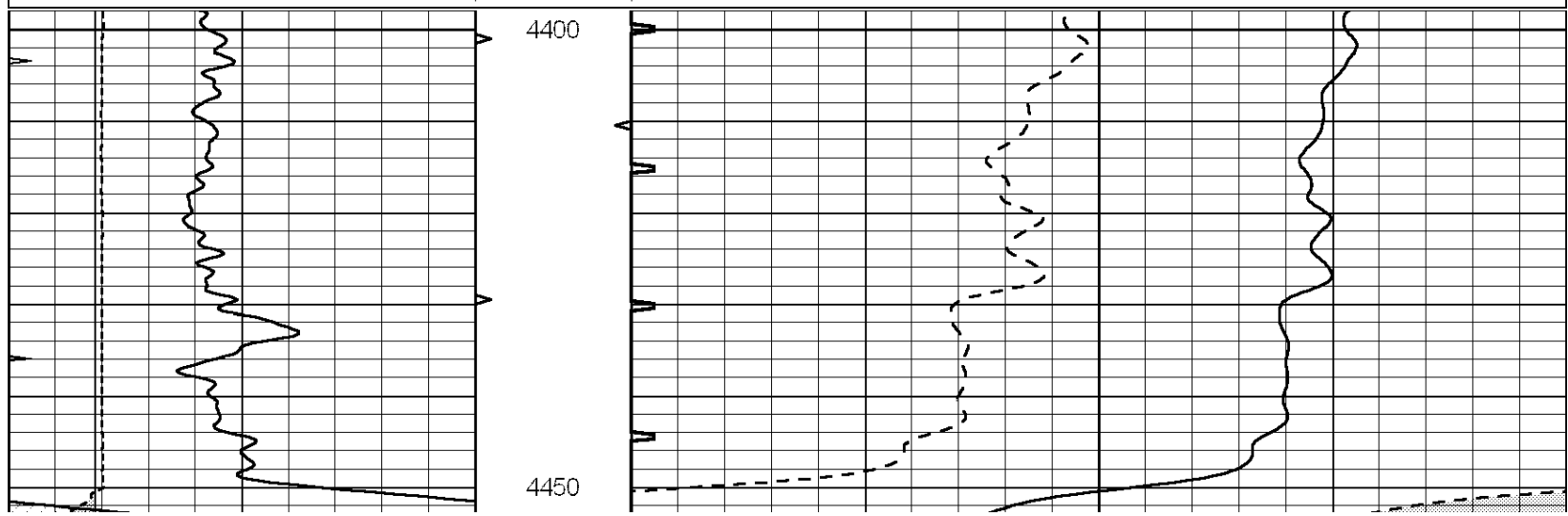


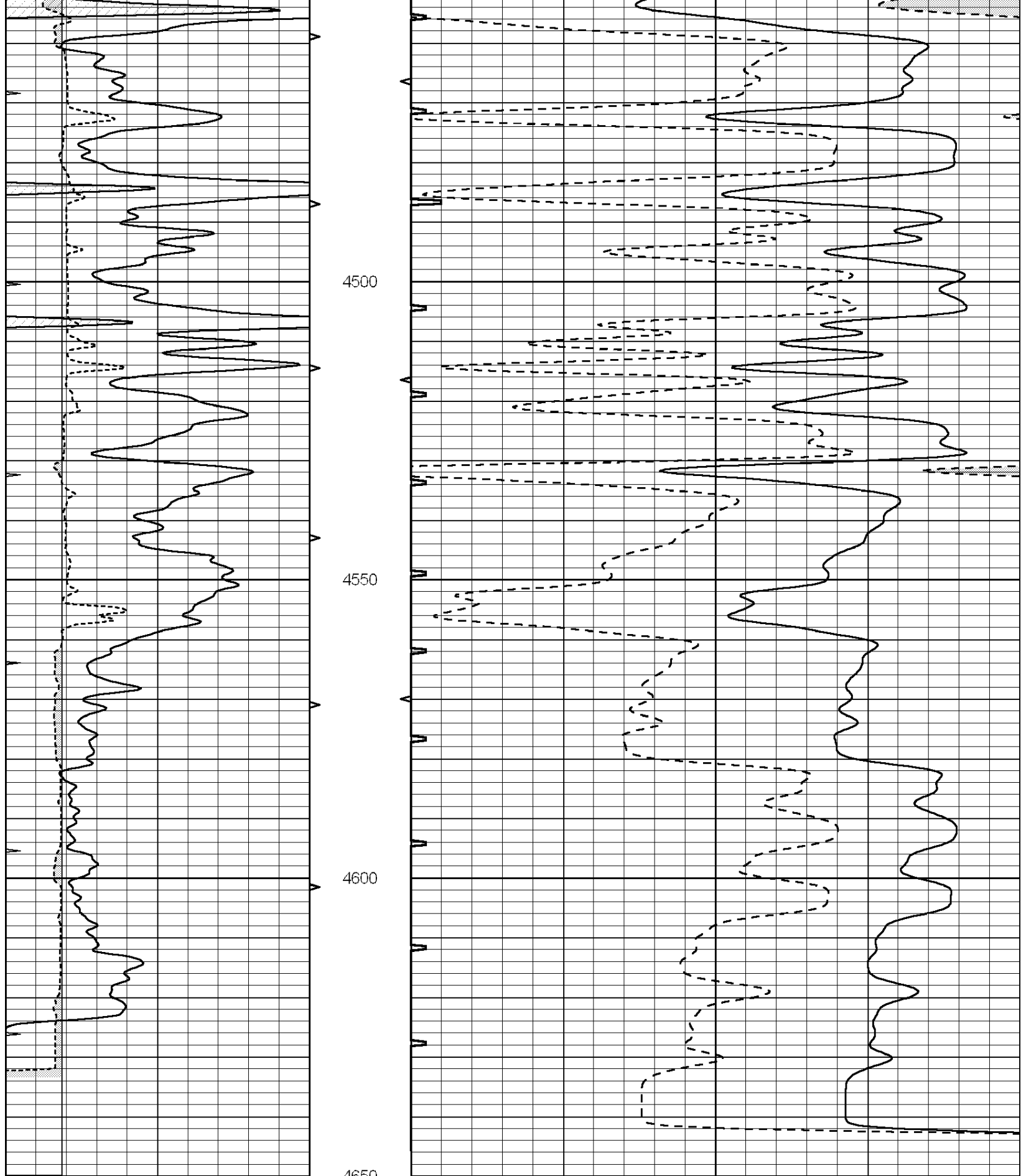
SUPERIOR
Hays,
Kansas

REPEAT SECTION

Database File: 007329pdn.db
 Dataset Pathname: pass4.2
 Presentation Format: slt
 Dataset Creation: Thu Jul 14 16:31:01 2011
 Charted by: Depth in Feet scaled 1:240

0	GAMMA RAY (GAPI)	150	ABHV	140	DELTA TIME (usec/ft)	40
6	MELCAL (in)	16	10 (ft3) 0	30	SONIC POROSITY (pu)	-10
0	MINMK	20	TBHV	0	ITT (msec)	20
			0 (ft3) 10			





0	GAMMA RAY (GAPI)	150	ABHV	140	DELTA TIME (usec/ft)	40
6	MELCAL (in)	16	10 (ft ³)	0 30	SONIC POROSITY (pu)	-10
0	MINMK	20	TBHV	0	ITT (msec)	20
			0 (ft ³)	10		