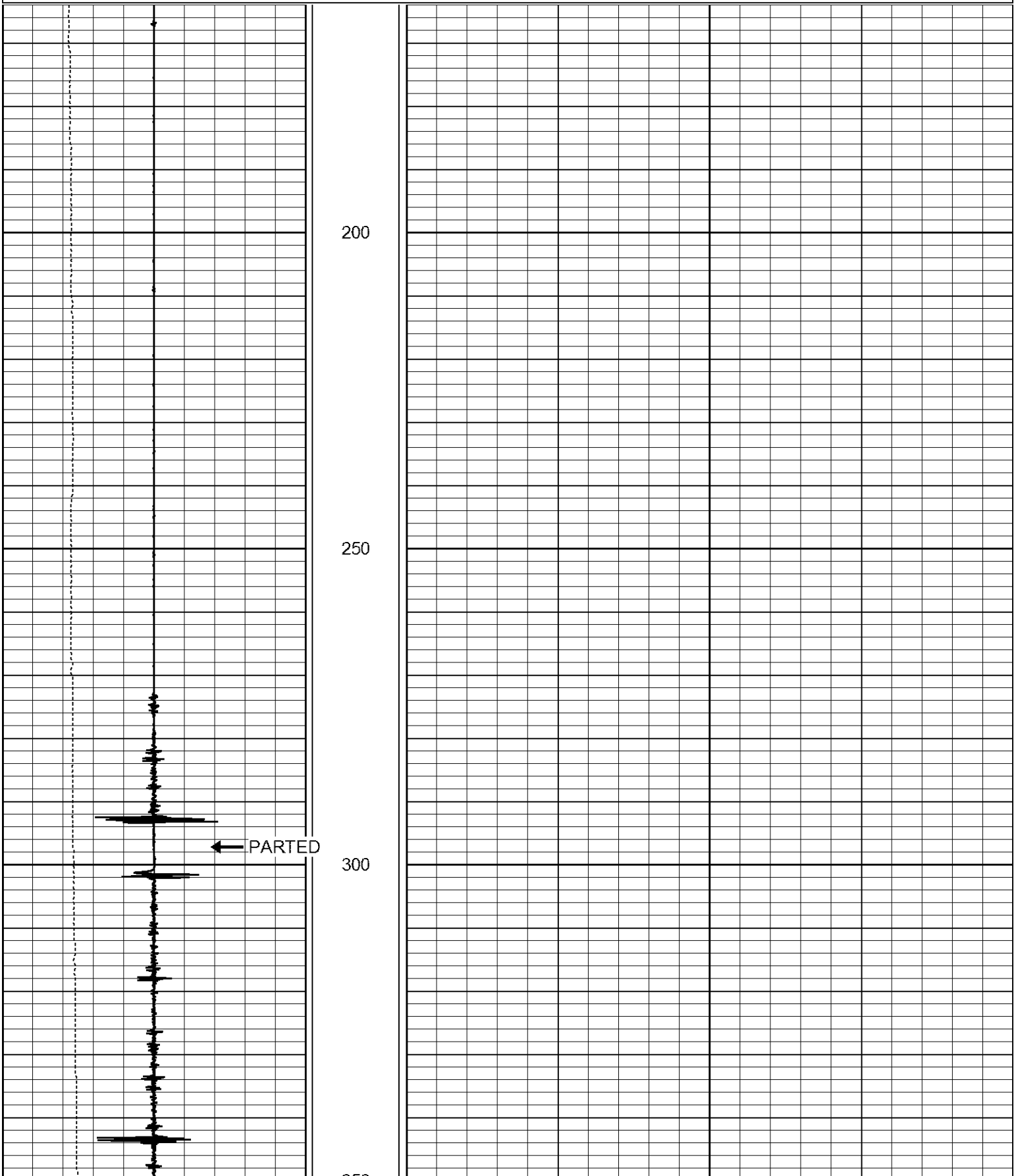
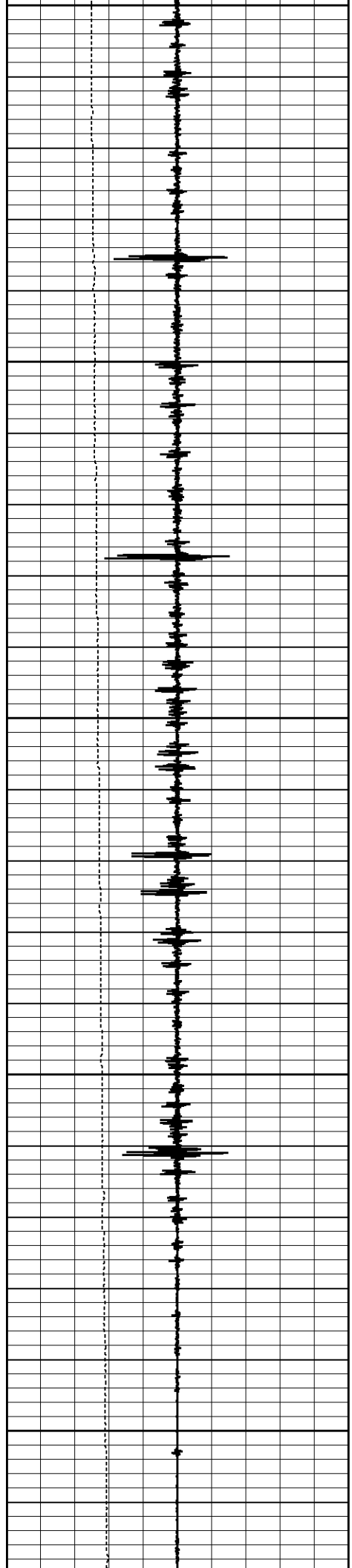




Database File: maryentztrust13.db  
Dataset Pathname: pass2  
Presentation Format: ccl  
Dataset Creation: Tue Oct 15 13:54:53 2013 by Log 7.0 B1  
Charted by: Depth in Feet scaled 1:240

5	CCL	-5
0	LTEN (lb)	1000





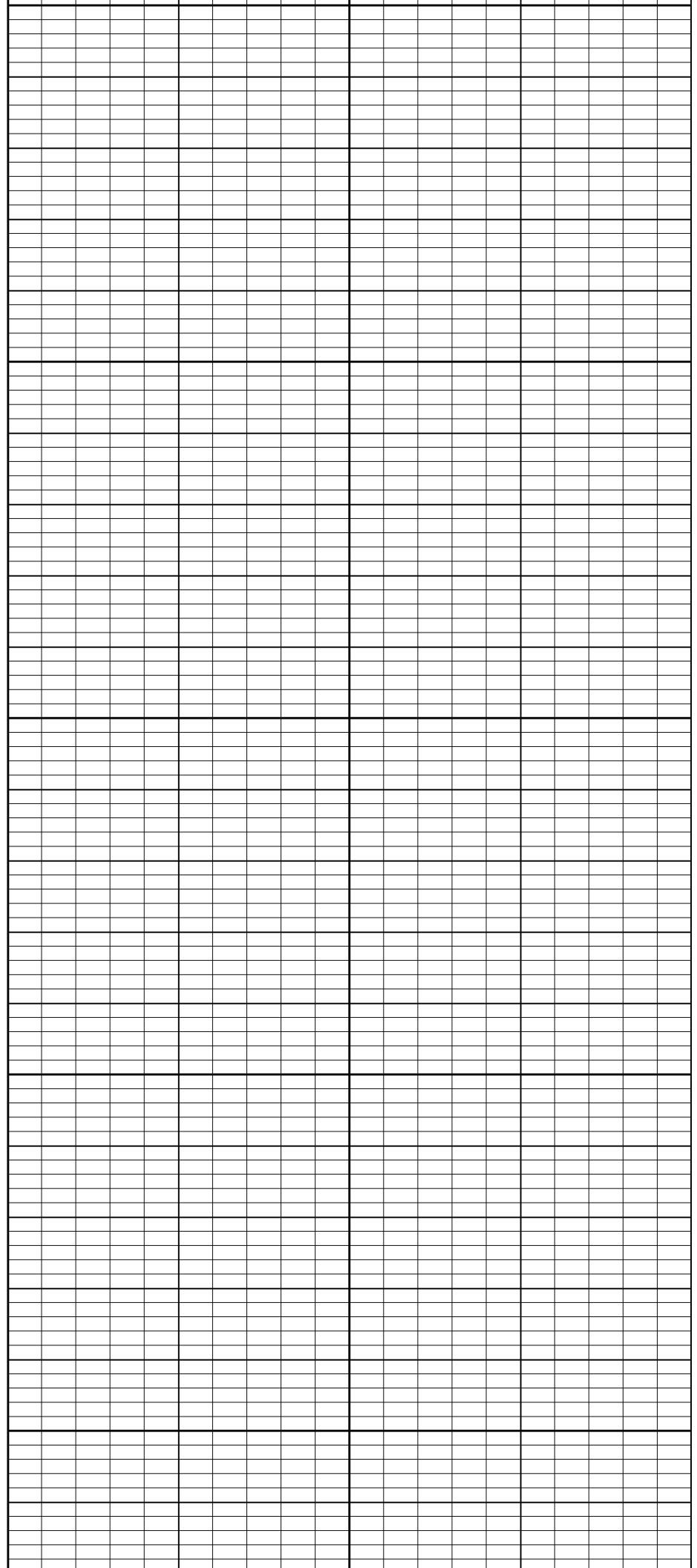
350

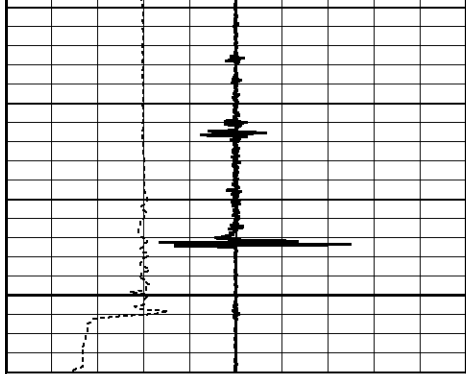
400

450

500

550





600

5 CCL -5  
 0 LTEN (lb) 1000

**LOG-TECH**

*of Kansas  
 Inc.*

GREAT BEND, KANSAS

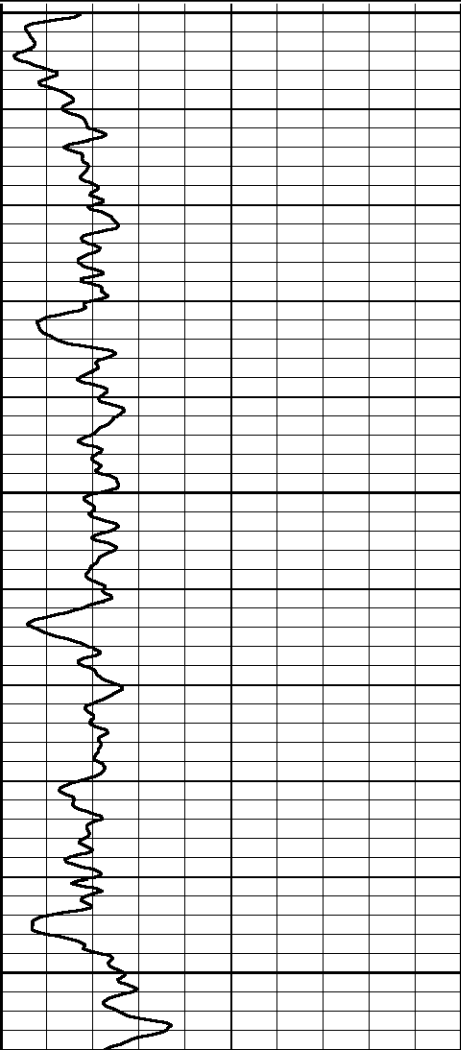
# MAIN PASS

Database File: maryentztrust13.db  
 Dataset Pathname: pass4  
 Presentation Format: gr-ccl  
 Dataset Creation: Tue Oct 15 15:24:21 2013 by Log 7.0 B1  
 Charted by: Depth in Feet scaled 1:240

0 GR (GAPI) 225

9 CCL -1 0

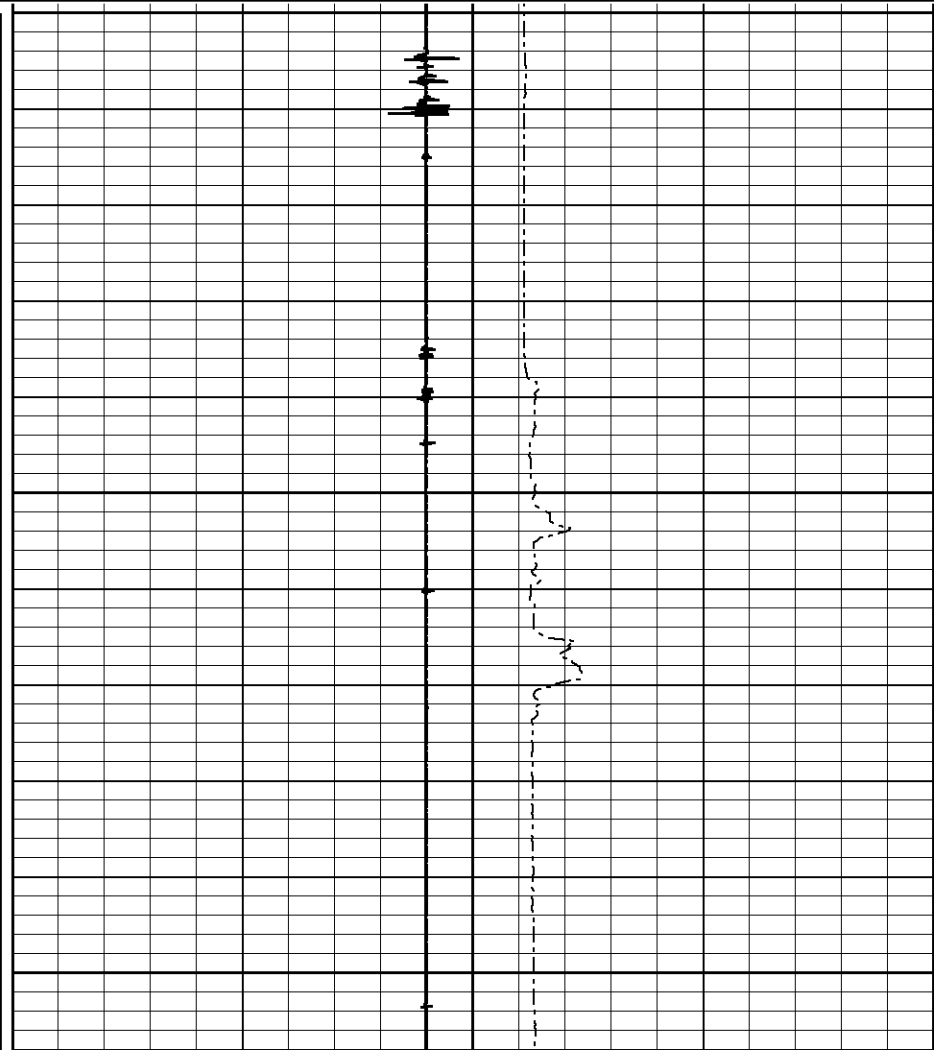
LTEN (lb) 1500

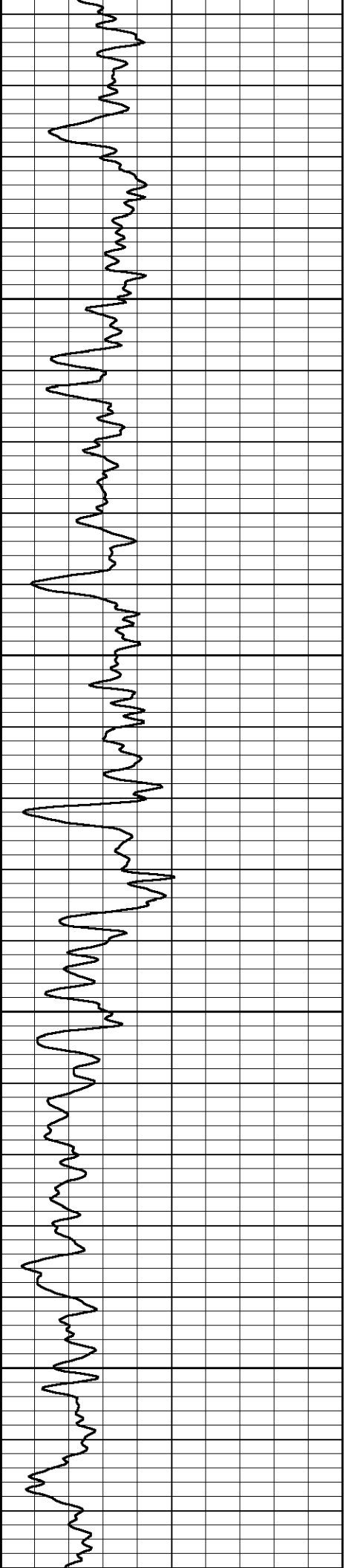


0

50

100





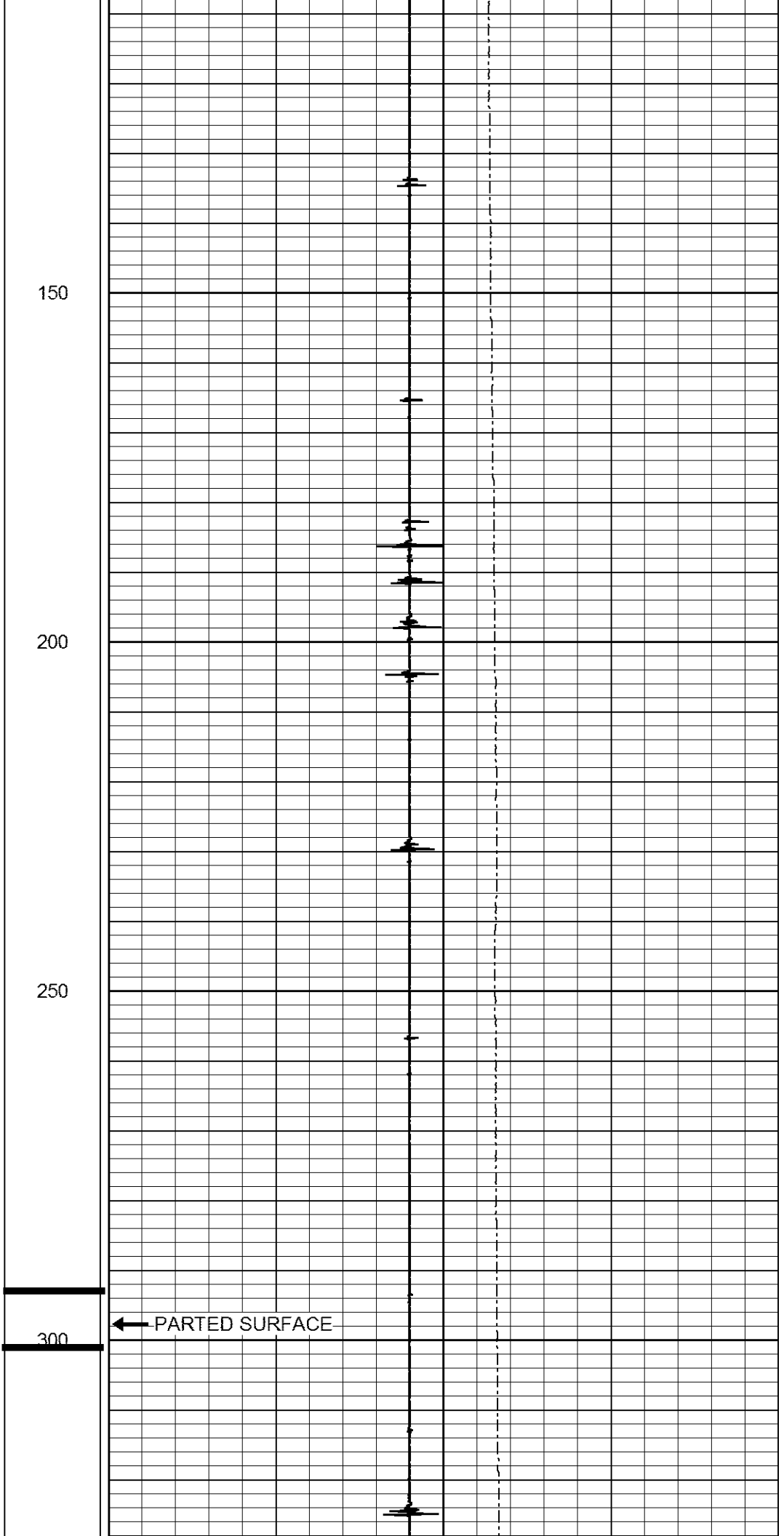
150

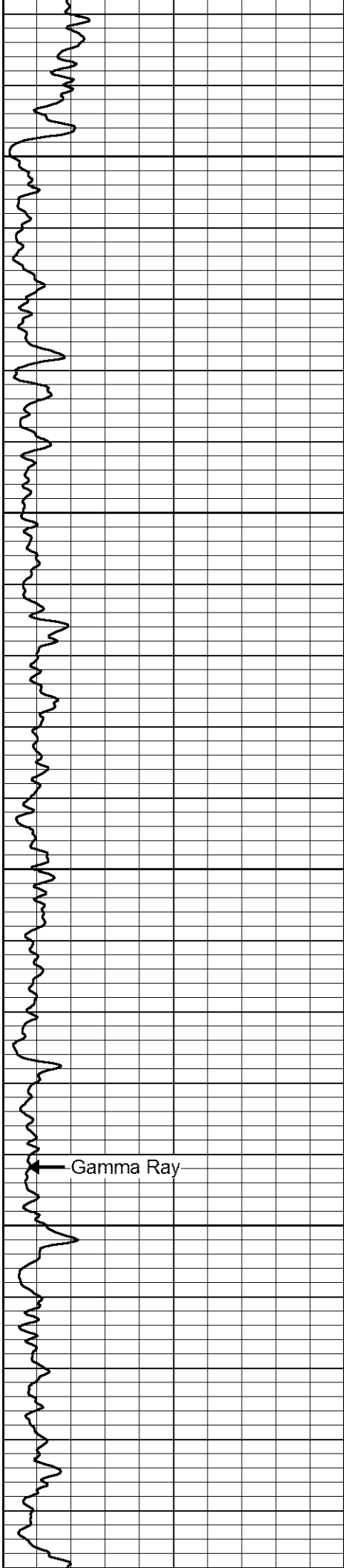
200

250

300

← PARTED SURFACE



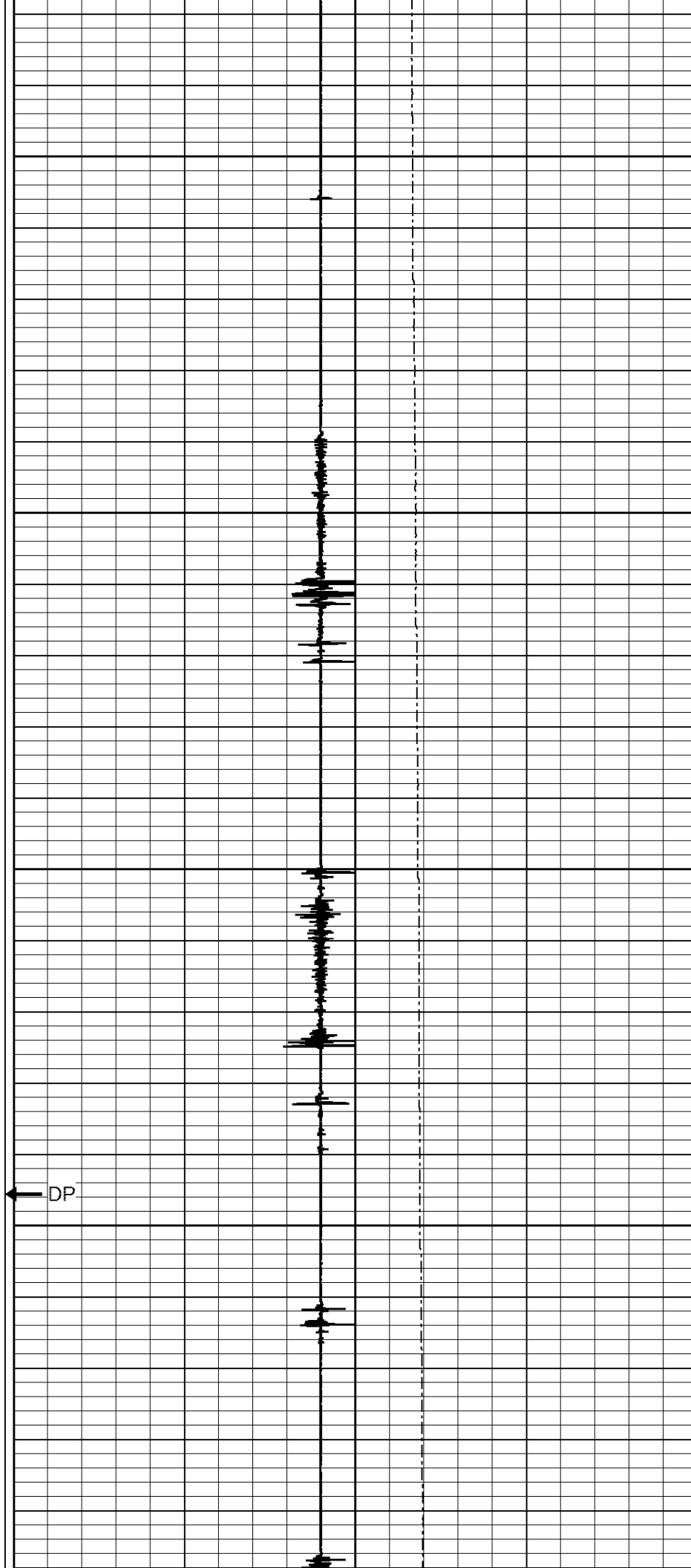


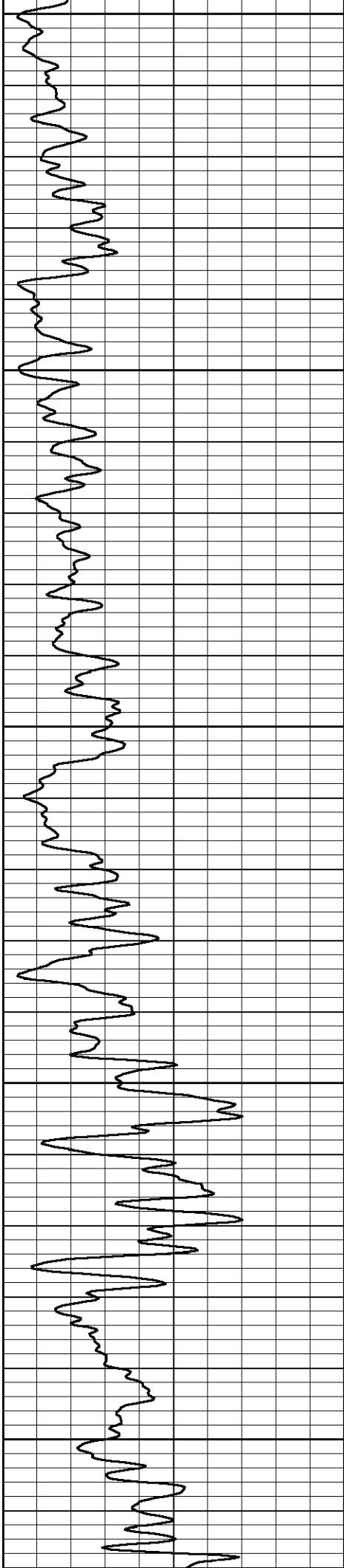
350

400

450

500





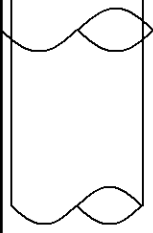
550

600

650

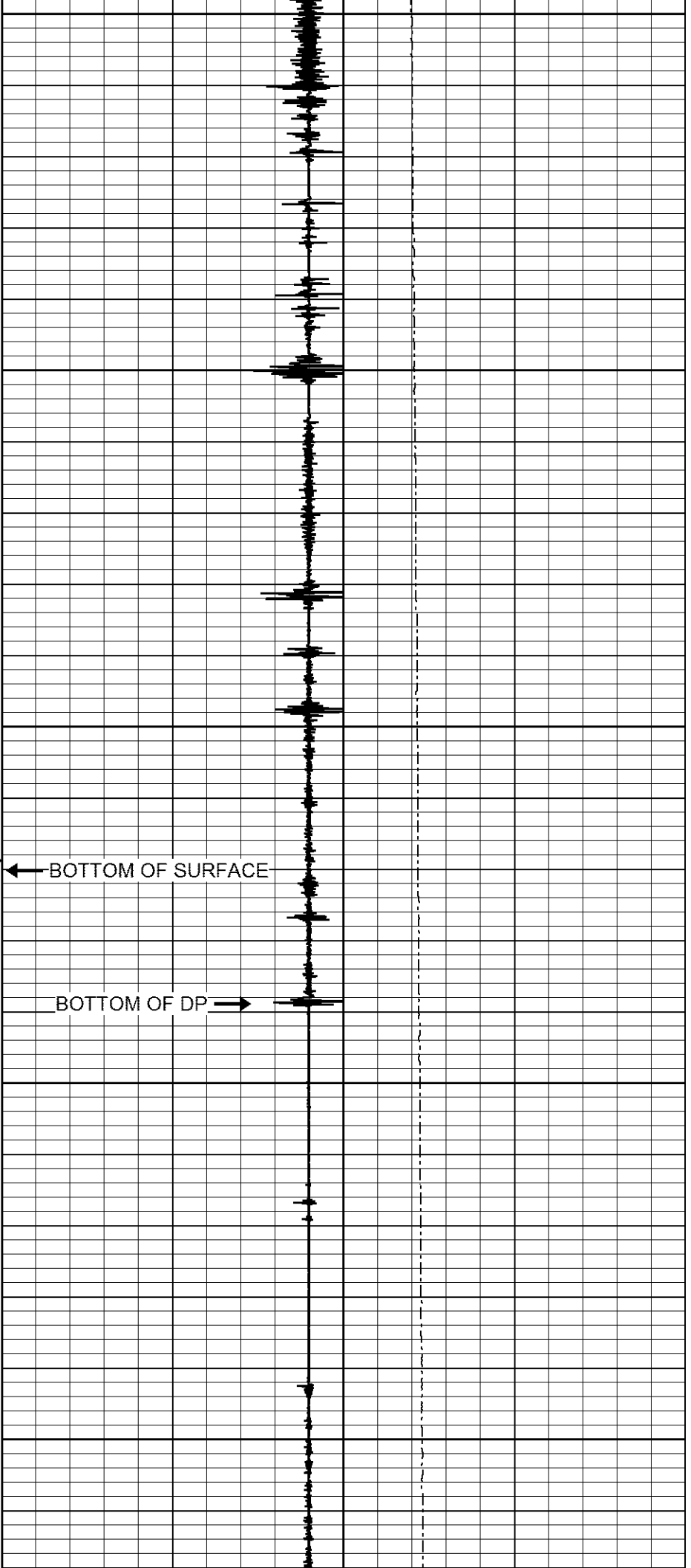
700

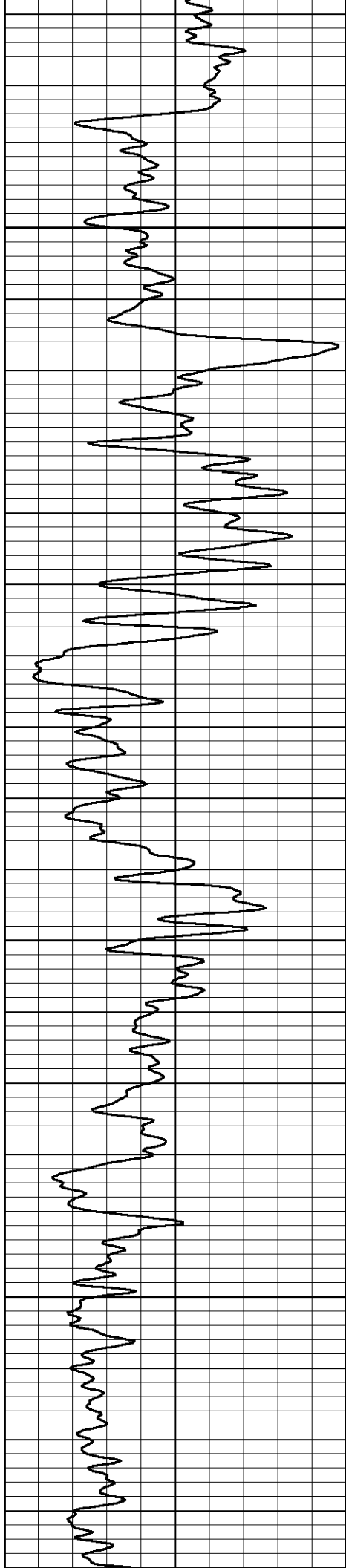
750



← BOTTOM OF SURFACE

BOTTOM OF DP →



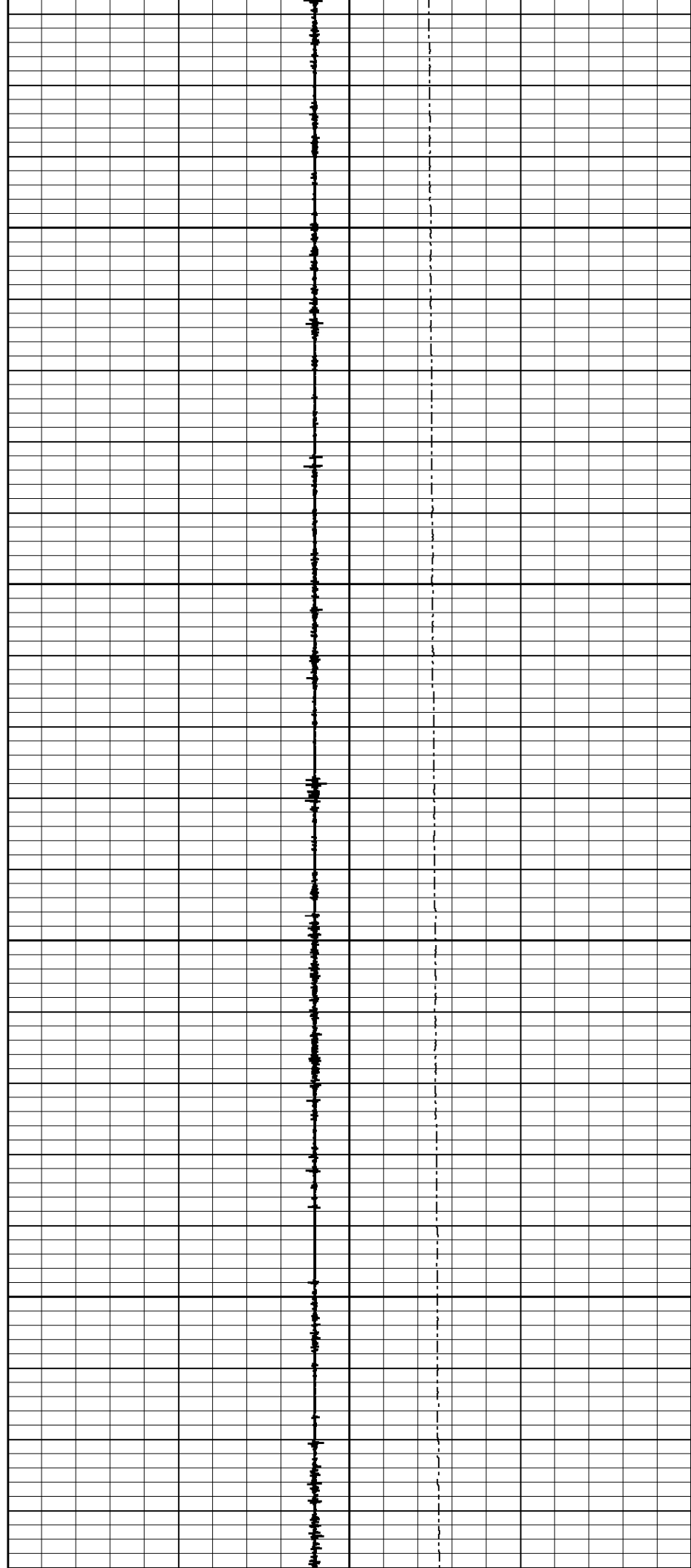


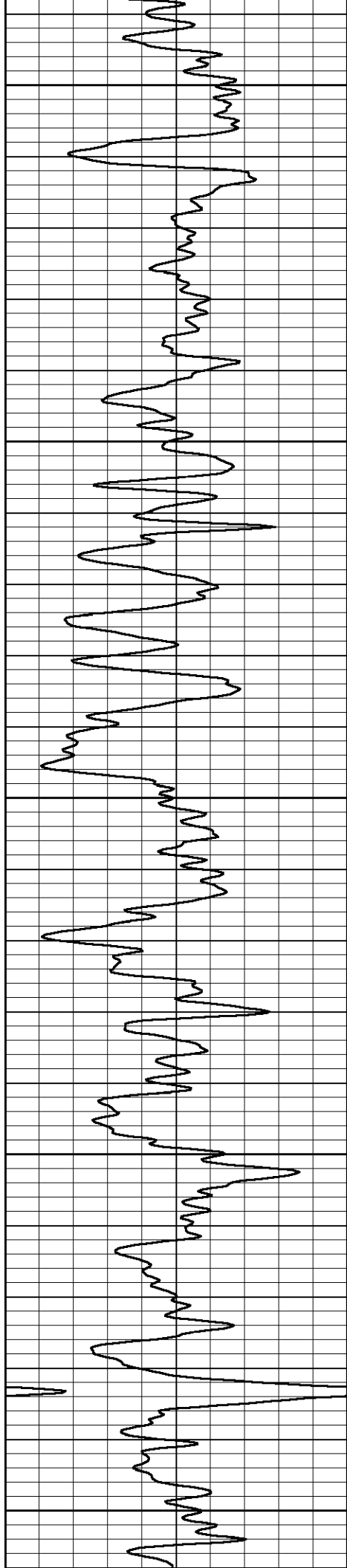
800

850

900

950





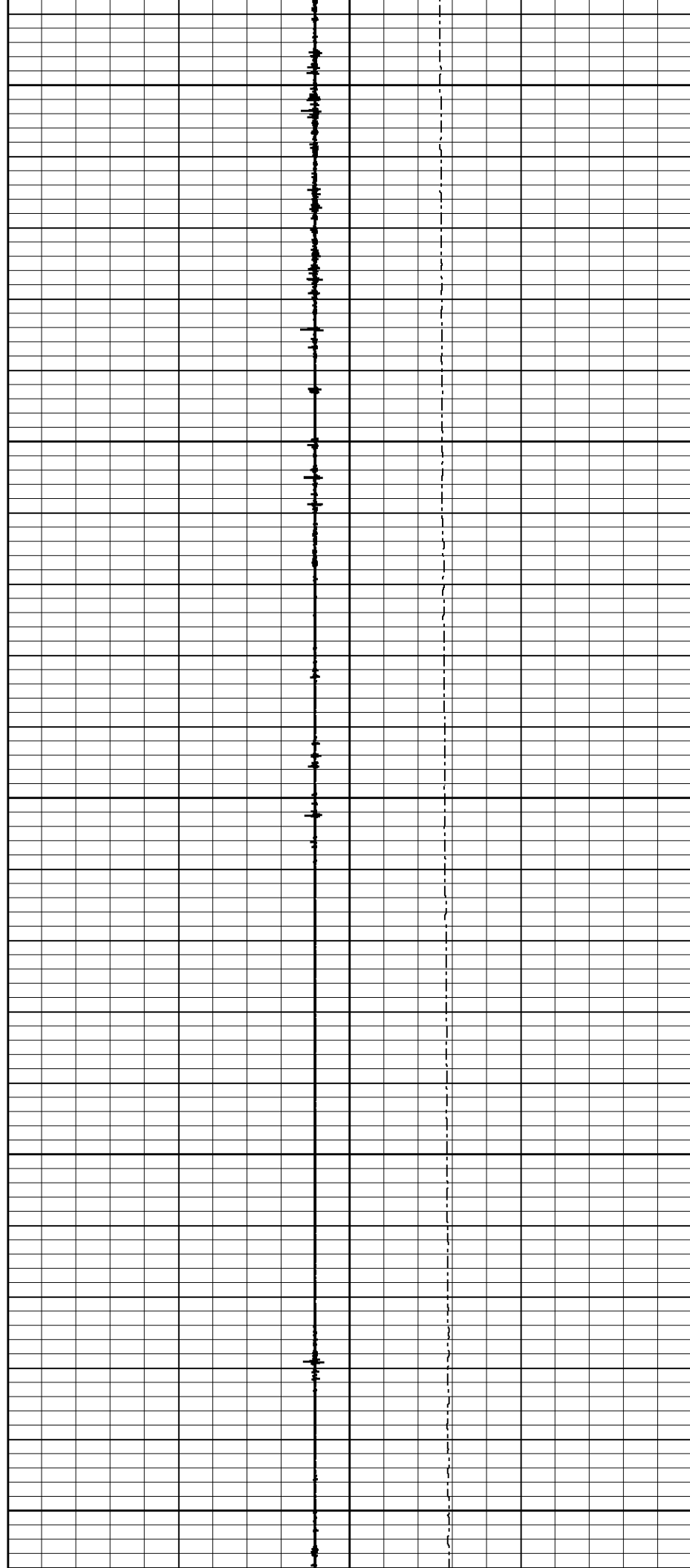
1000

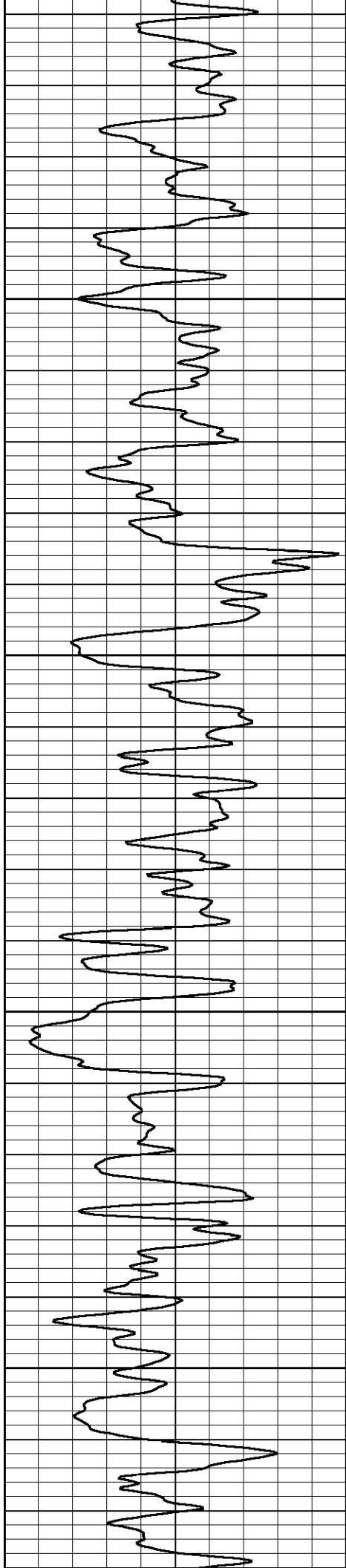
1050

1100

1150

1200



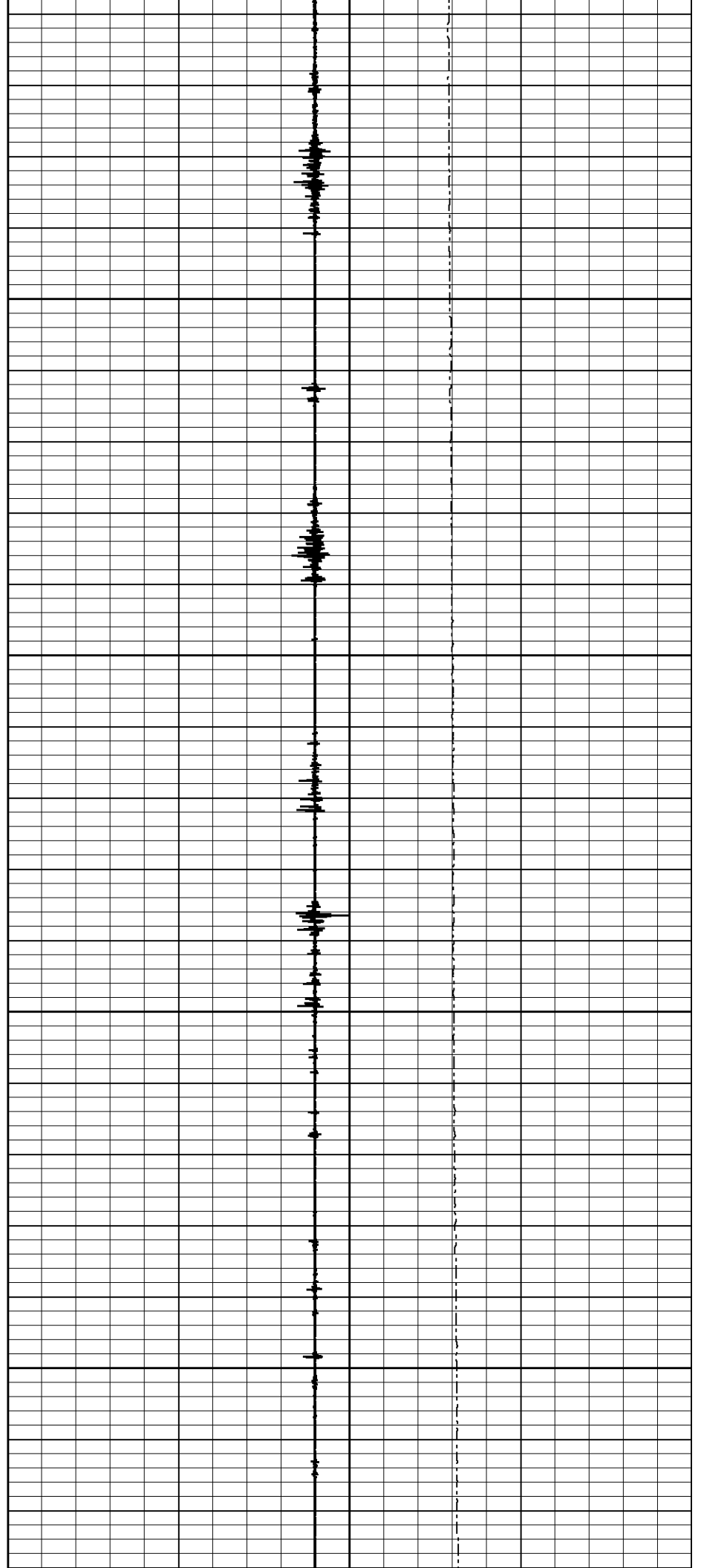


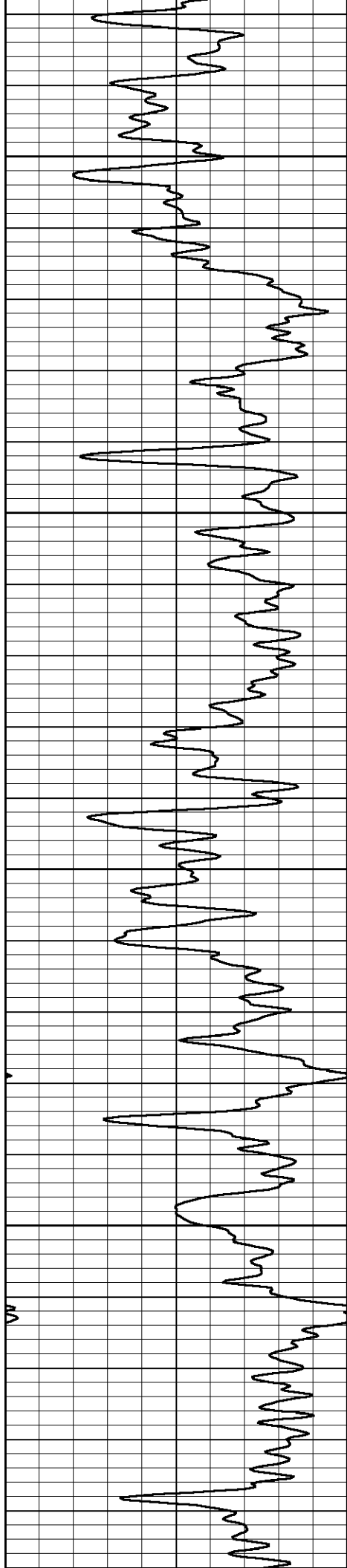
1250

1300

1350

1400



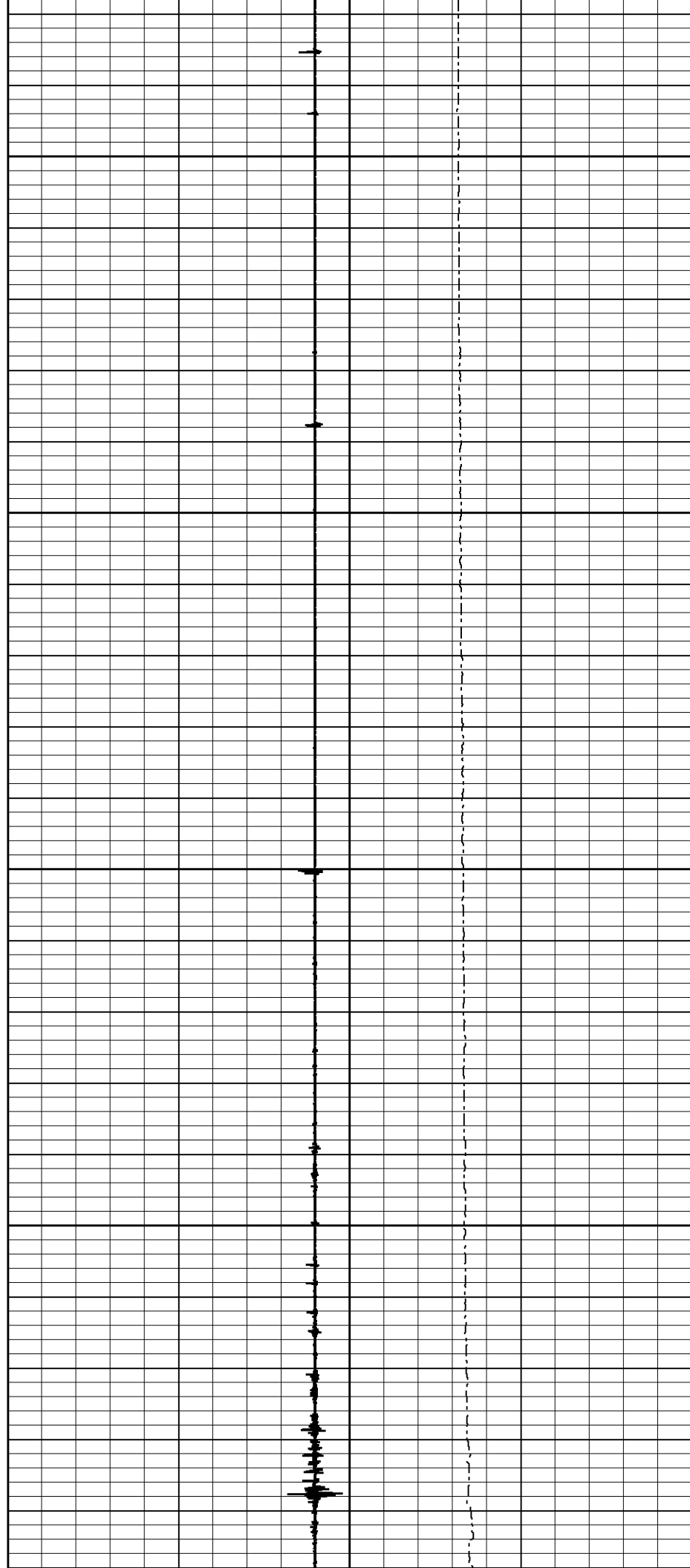


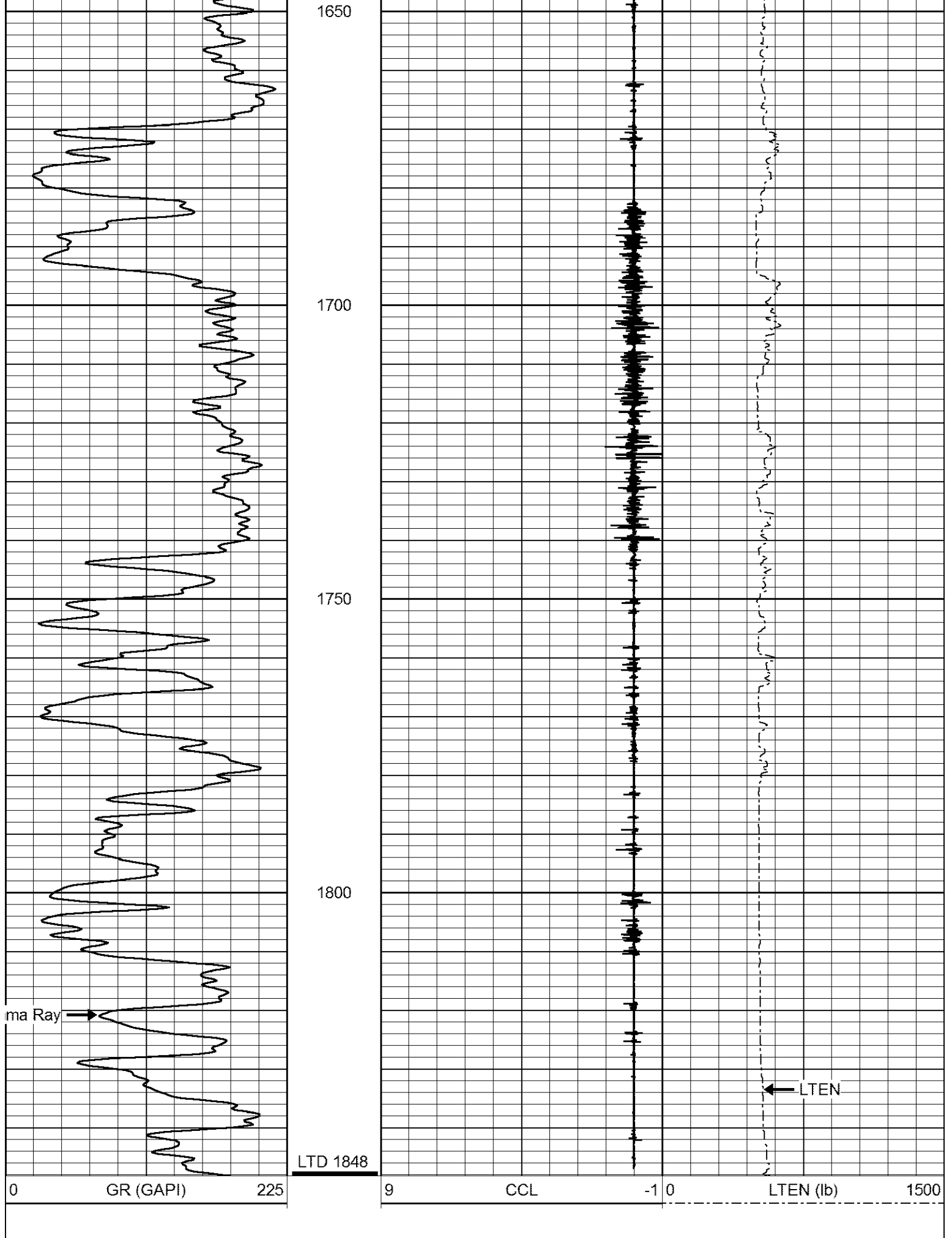
1450

1500

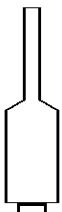


1550

1600

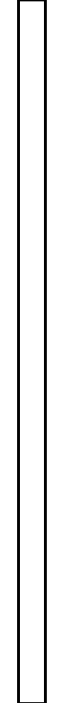




Sensor	Offset (ft)	Schematic	Description	Len (ft)	OD (in)	Wt (lb)

			STNDRD Standard Cable Head	1.00	1.69	10.00
			7' 1 11/16 sinkerbar 7'	7.00	1.69	83.00
CCL	0.00		CCL-slimperf (slimperf1) slimperf1	1.54	1.69	5.00

Dataset: maryentztrust13.db: field/well/run1/pass2  
 Total Length: 9.54 ft  
 Total Weight: 98.00 lb  
 O.D. 1.69 in

Sensor	Offset (ft)	Schematic	Description	Len (ft)	OD (in)	Wt (lb)
			STNDRD Standard Cable Head	1.00	1.69	10.00
			5'	5.00	1.69	35.00
CCL	6.08		CCL-sie1 (ccl1) slimccl	1.83	1.69	10.00
			GR-sie (gr1) slimholegr	5.50	1.69	40.00
GR	1.00					

Dataset: maryentztrust13.db: field/well/run1/pass4  
 Total Length: 13.33 ft  
 Total Weight: 95.00 lb  
 O.D.: 1.69 in

