



SUPERIOR
Hays,
Kansas

**DUAL INDUCTION
LOG**

Company AMERICAN ENERGIES CORP.
Well ARNDT #2-34
Field WILDCAT
County NORTON
State KANSAS

Company AMERICAN ENERGIES CORPORATION
Well ARNDT #2-34
Field WILDCAT
County NORTON State KANSAS

Location: API # : 15-137-20582-0000
1980' FSL & 330' FWL
W/2 - NW - SW
SEC 34 TWP 3S RGE 23W
Permanent Datum GROUND LEVEL Elevation 2441
Log Measured From KELLY BUSHING 5' A.G.L.
Drilling Measured From KELLY BUSHING
Other Services
CDL/CNL
MEL
Elevation
K.B. 2446
D.F. 2444
G.L. 2441

Date	9/8/11		
Run Number	ONE		
Depth Driller	3816		
Depth Logger	3818		
Bottom Logged Interval	3816		
Top Log Interval	00		
Casing Driller	8 5/8"@344'		
Casing Logger	345		
Bit Size	7 7/8"		
Type Fluid in Hole	CHEMICAL MUD	CHLORIDES 1,900 PPM	
Density / Viscosity	9.1/55		
pH / Fluid Loss	10.0/6.8		
Source of Sample	FLOWLINE		
Rm @ Meas. Temp	1.80@80F		
Rmt @ Meas. Temp	1.35@80F		
Rmc @ Meas. Temp	2.16@80F		
Source of Rmf / Rmc	MEASUREMENT		
Rm @ BHT	1.26@114F		
Time Circulation Stopped	2 HOURS		
Time Logger on Bottom	11:15 A.M.		
Maximum Recorded Temperature	114F		
Equipment Number	4010		
Location	HAYS, KANSAS		
Recorded By	JEFF LUEBBERS		
Witnessed By	DAVE GOLDAK		

<<< Fold Here >>>

All interpretations are opinions based on inferences from electrical or other measurements and we cannot and do not guarantee the accuracy or correctness of any interpretation, and we shall not, except in the case of gross or willful negligence on our part, be liable or responsible for any loss, costs, damages, or expenses incurred or sustained by anyone resulting from any interpretation made by any of our officers, agents or employees. These interpretations are also subject to our general terms and conditions set out in our current Price Schedule.

Comments

THANK YOU FOR USING SUPERIOR WELL SERVICE HAYS, KANSAS (785) 628-6395
DIRECTIONS
N. OF HILL CITY, KS. (JUNCTION OF HWY 283 & 9) 8N. ON HWY 283, KS. TO "RD. S", 1W., 1/2N., E. INTO



SUPERIOR
Hays,
Kansas

MAIN SECTION

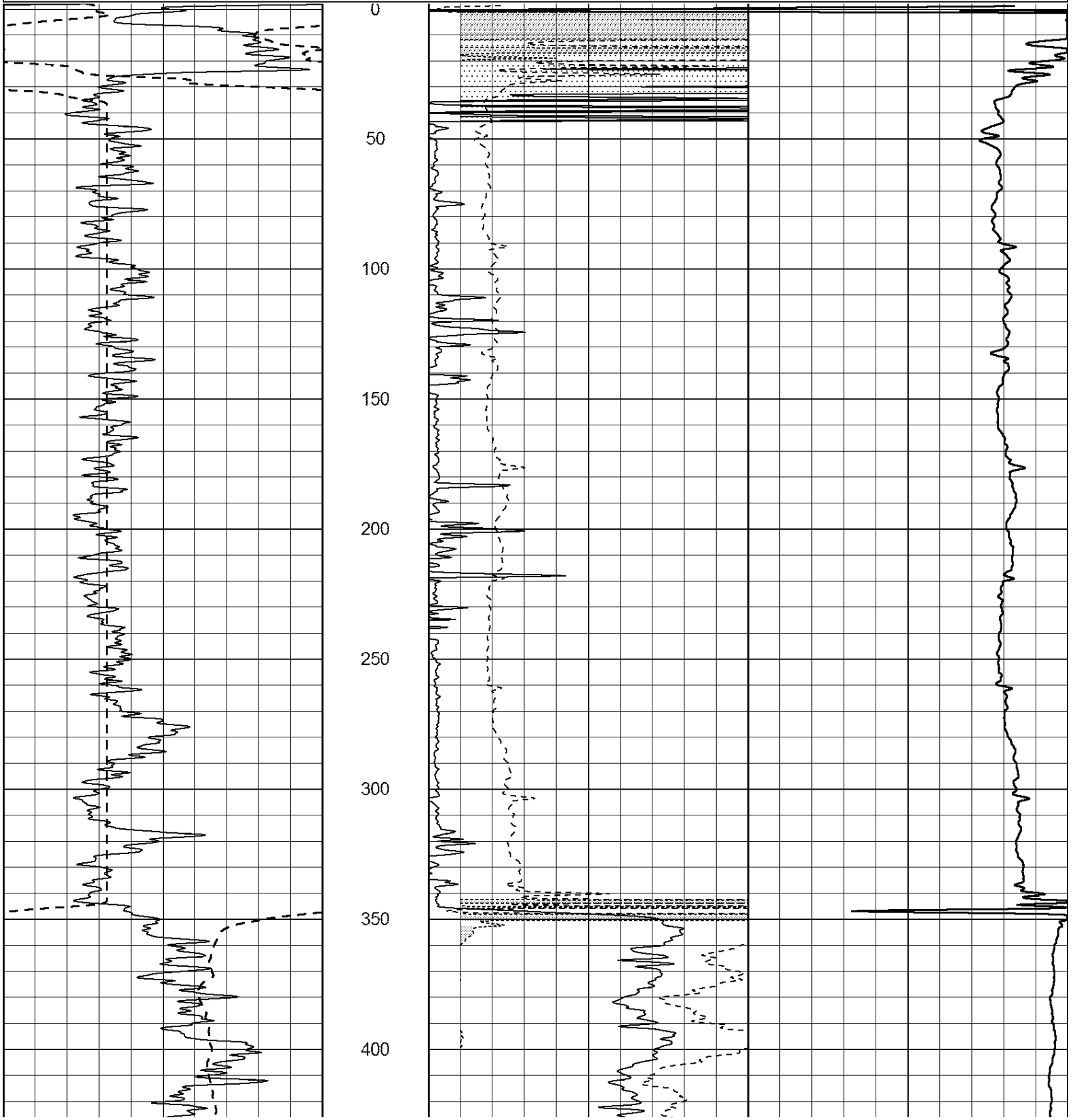
Database File: 007292ddn.db
 Dataset Pathname: pass3.11
 Presentation Format: dil2
 Dataset Creation: Thu Sep 08 12:31:39 2011
 Charted by: Depth in Feet scaled 1:600

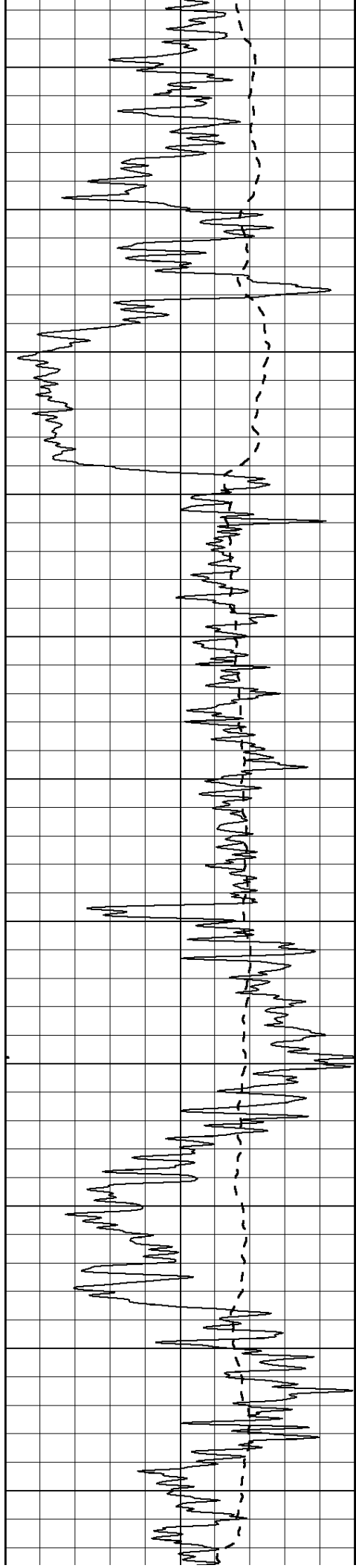
0	Gamma Ray (GAPI)	150
-100	SP (mV)	100

0	RLL3 (Ohm-m)	50
0	RILD (Ohm-m)	50

1000	CILD (mmho/m)	0
------	---------------	---

50	RILD X10 (Ohm-m)	500
50	RLL3 X10 (Ohm-m)	500





450

500

550

600

650

700

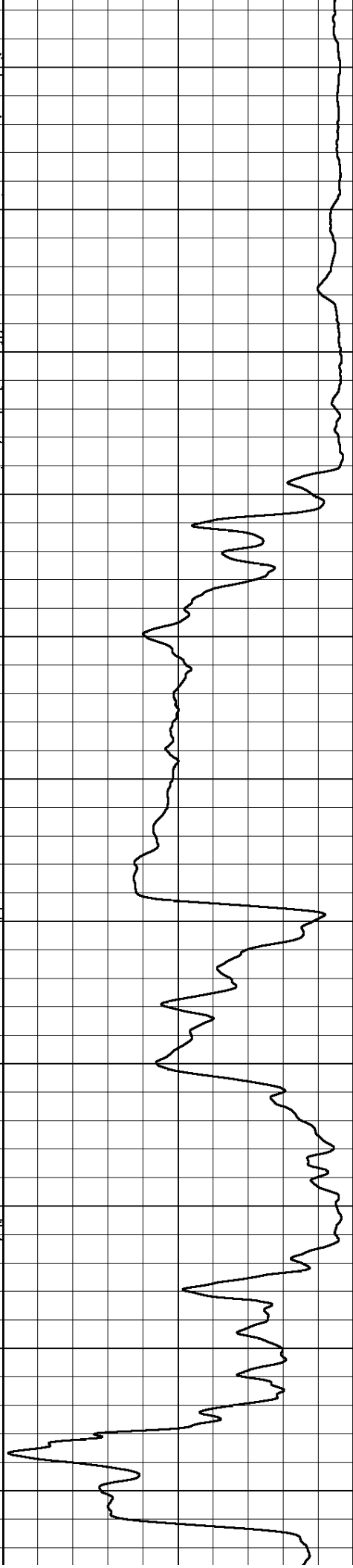
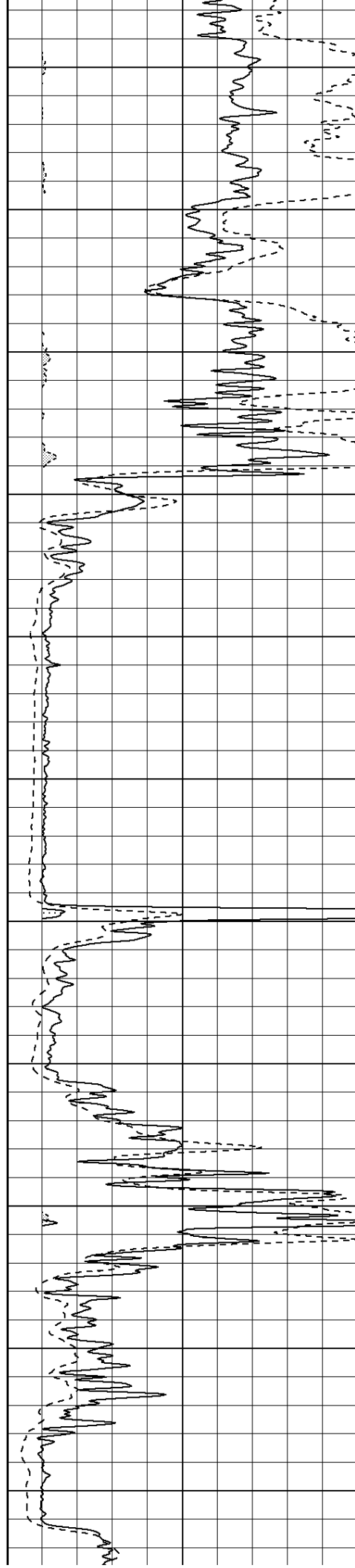
750

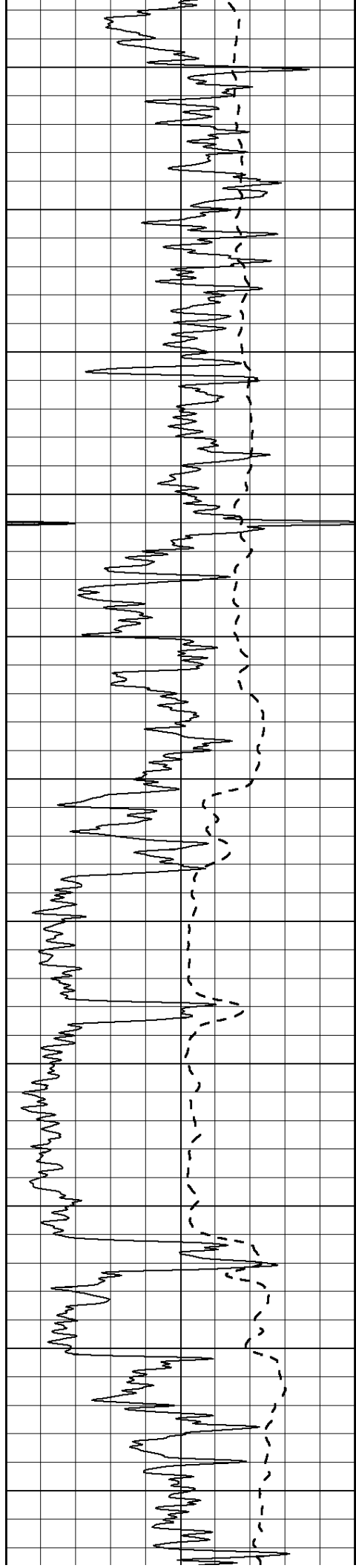
800

850

900

950





1000

1050

1100

1150

1200

1250

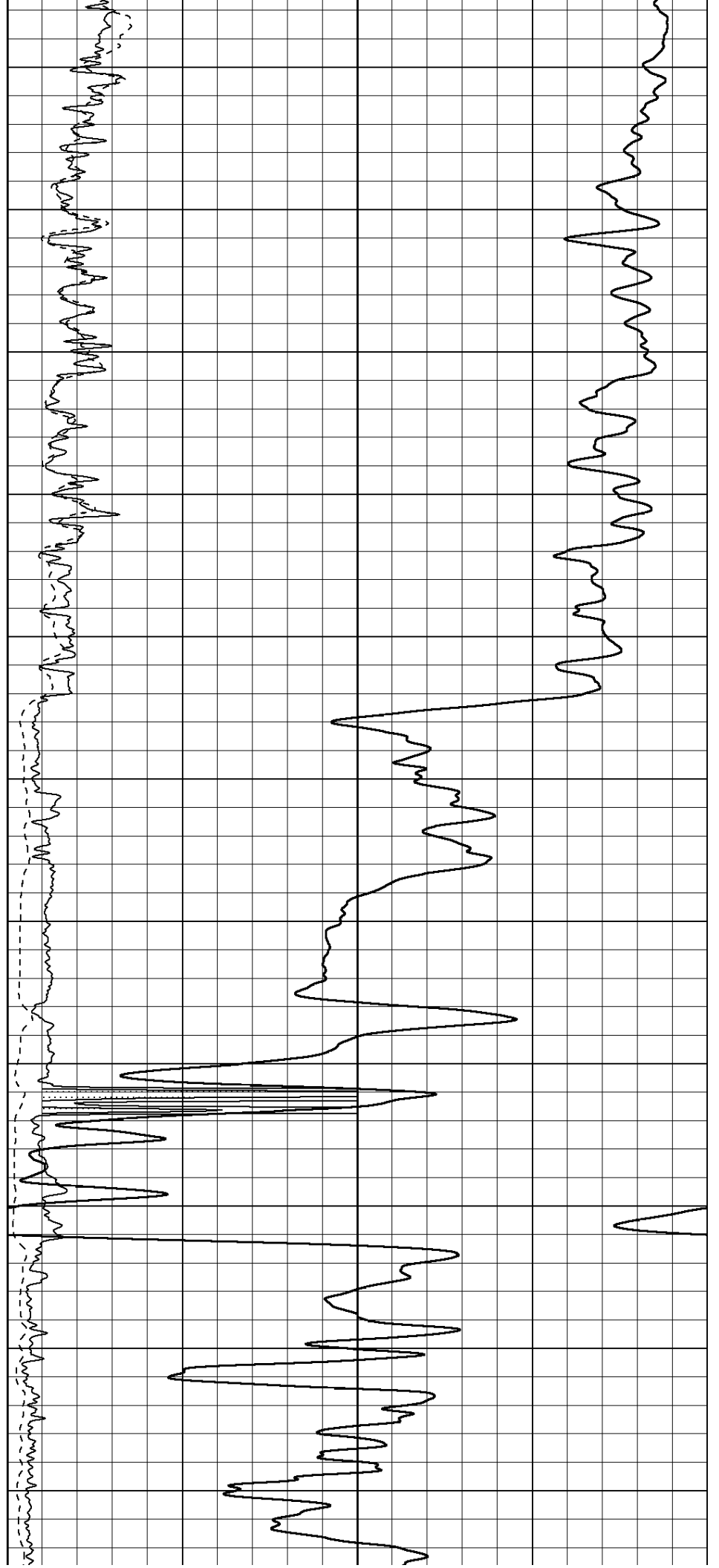
1300

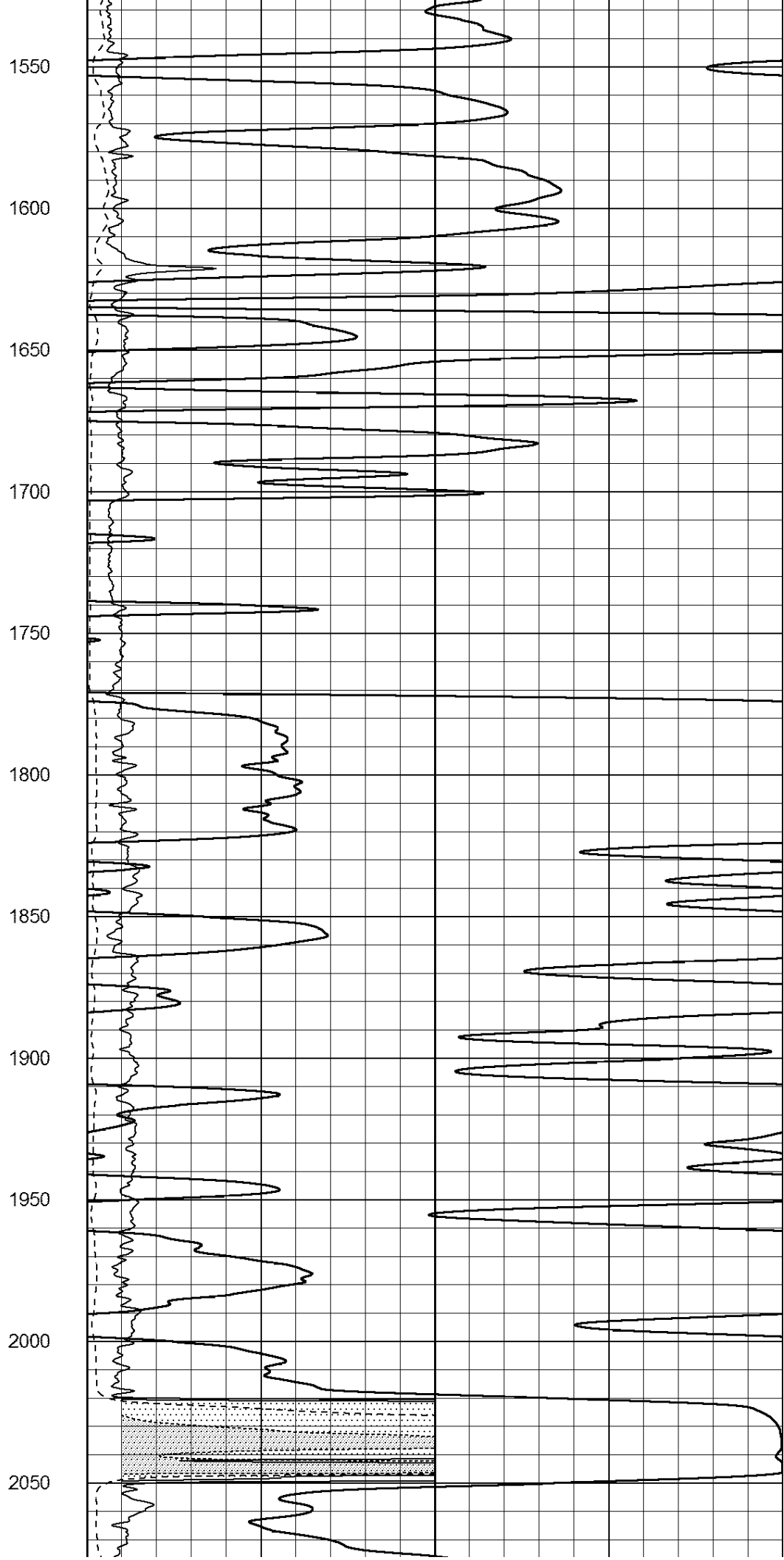
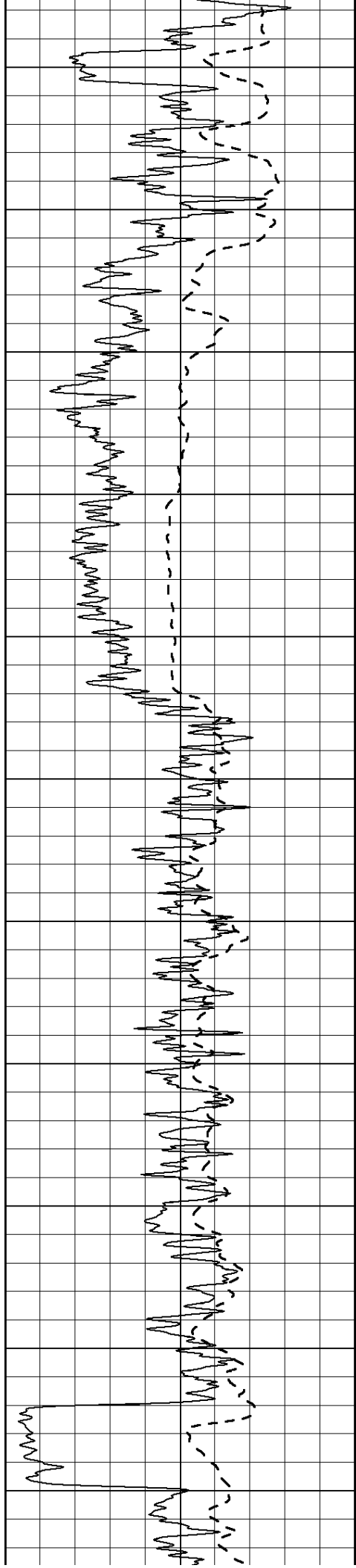
1350

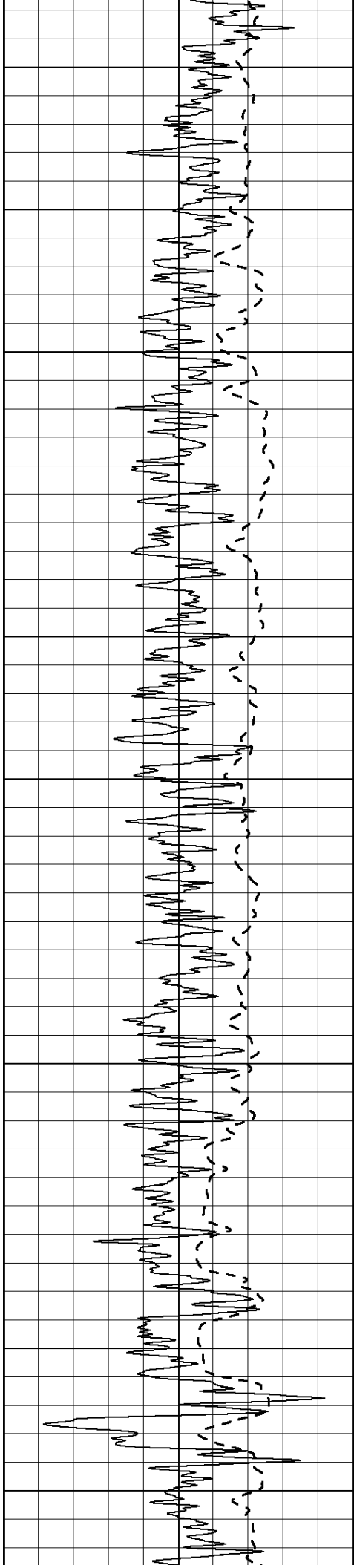
1400

1450

1500







2100

2150

2200

2250

2300

2350

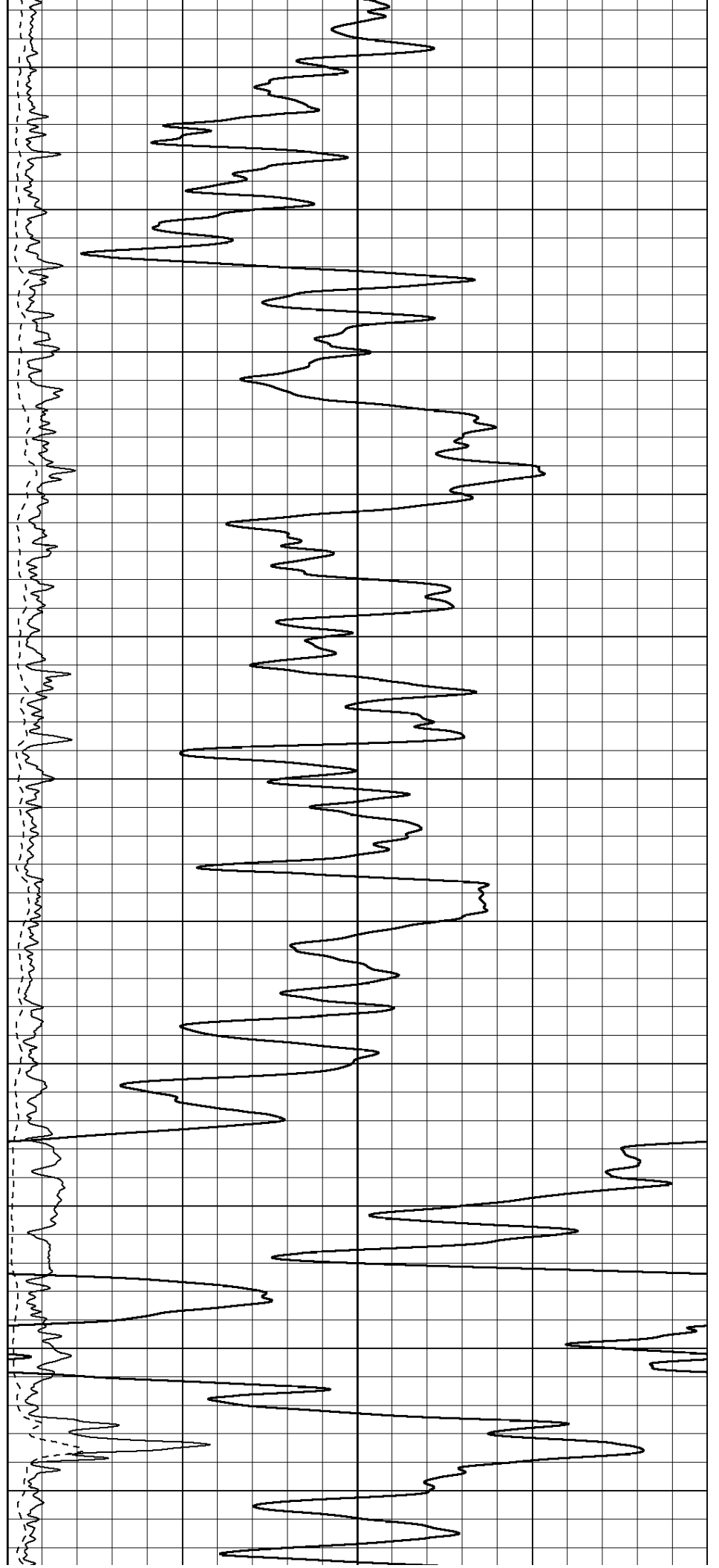
2400

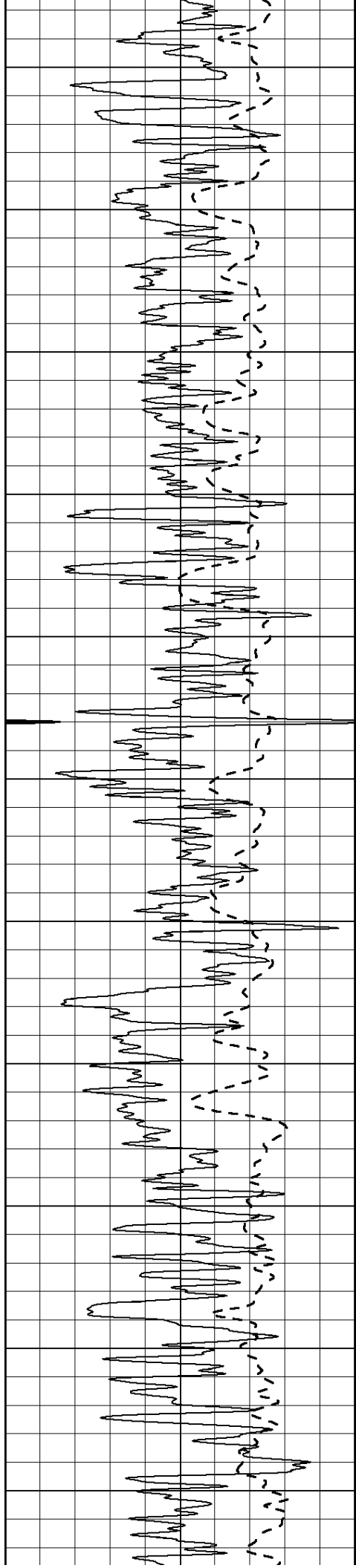
2450

2500

2550

2600





2650

2700

2750

2800

2850

2900

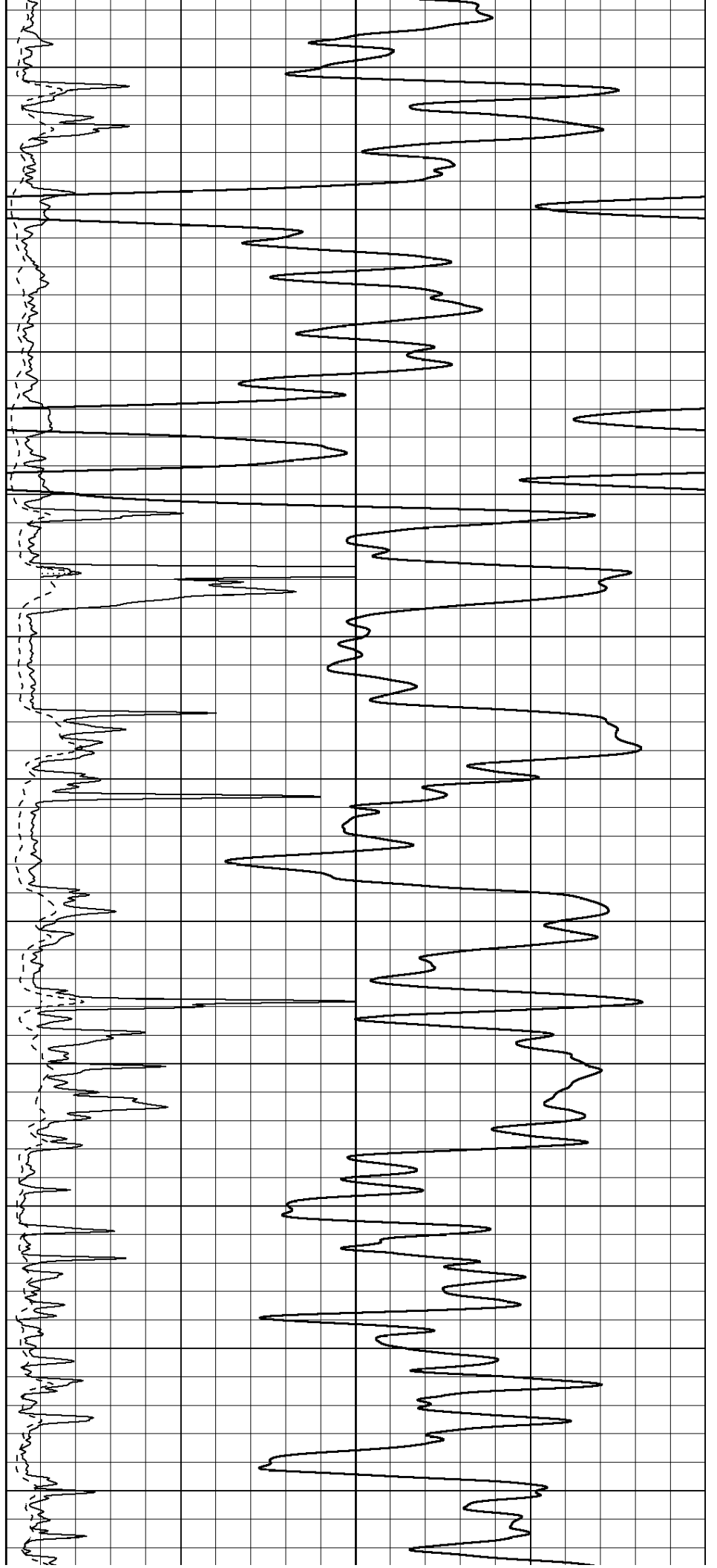
2950

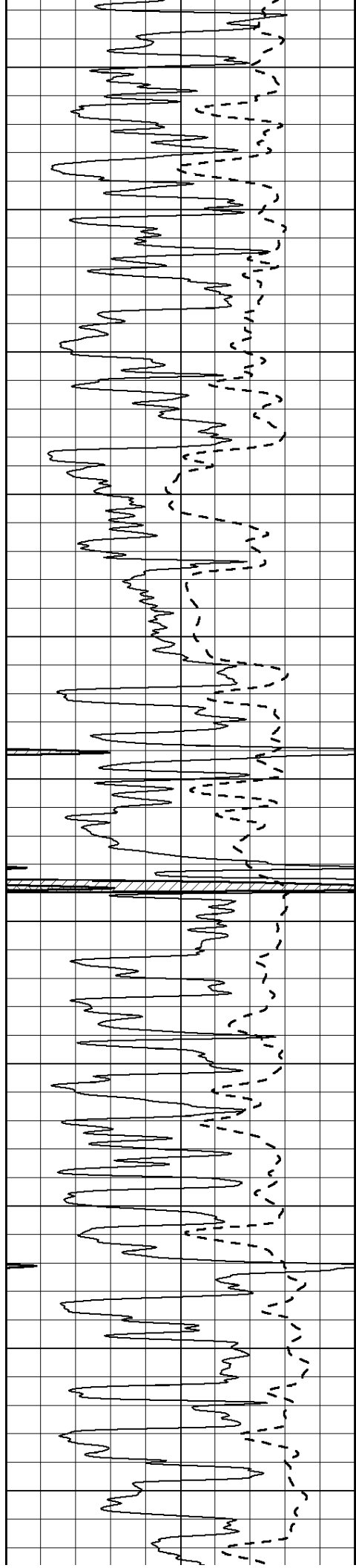
3000

3050

3100

3150





3200

3250

3300

3350

3400

3450

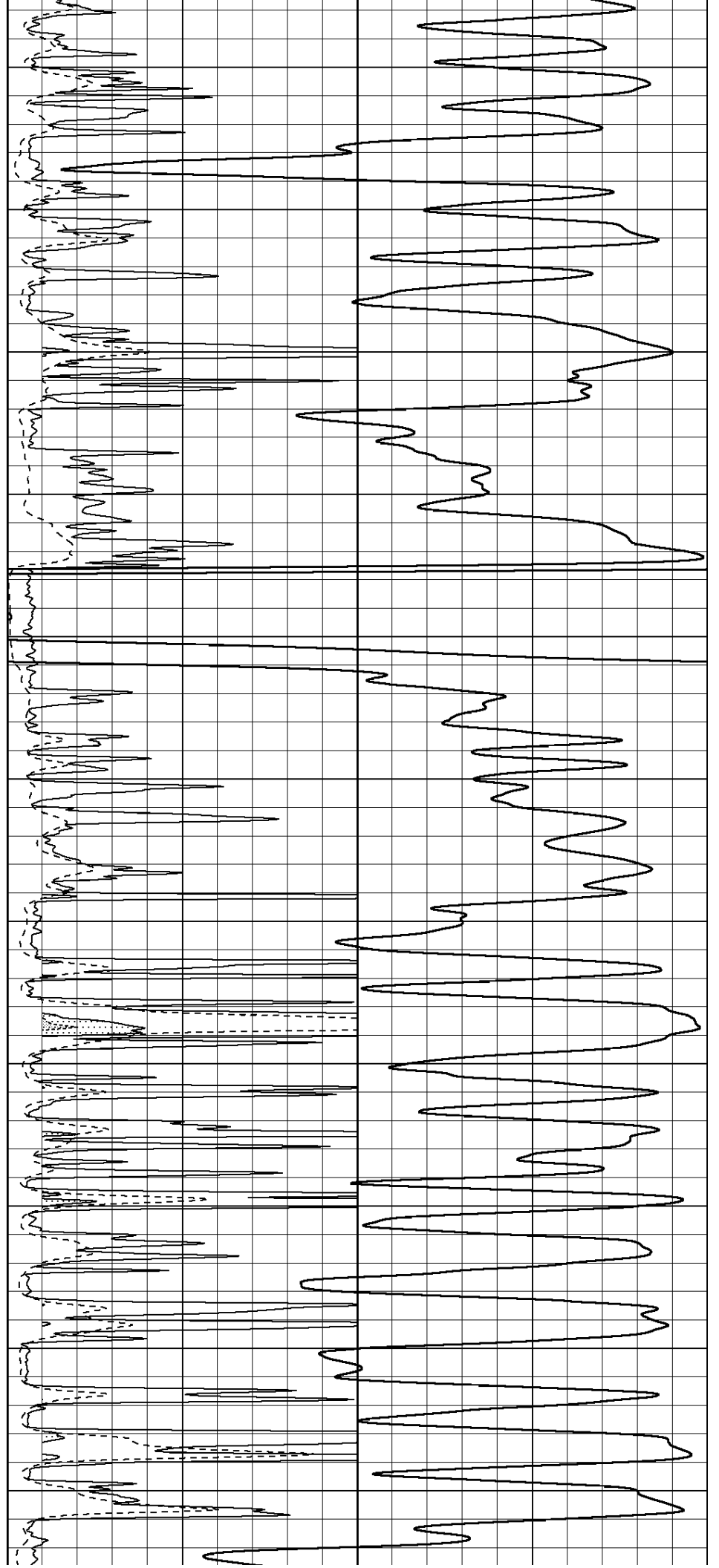
3500

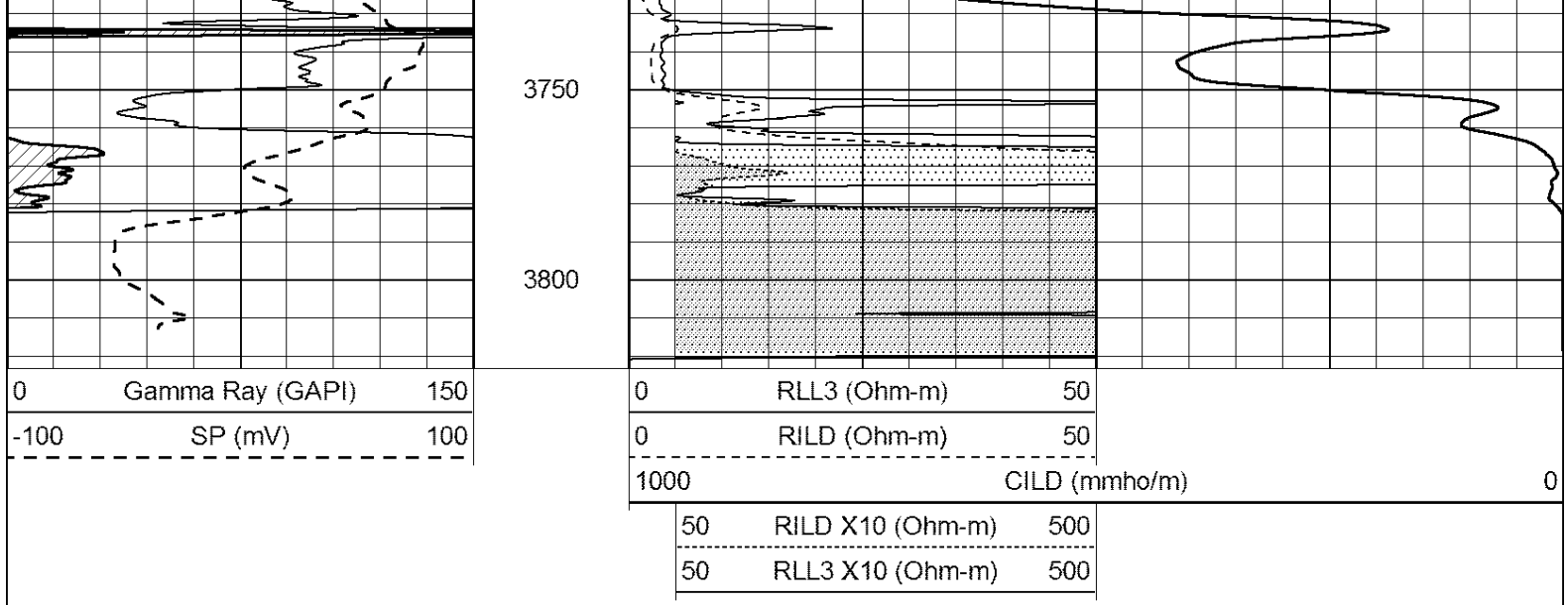
3550

3600

3650

3700





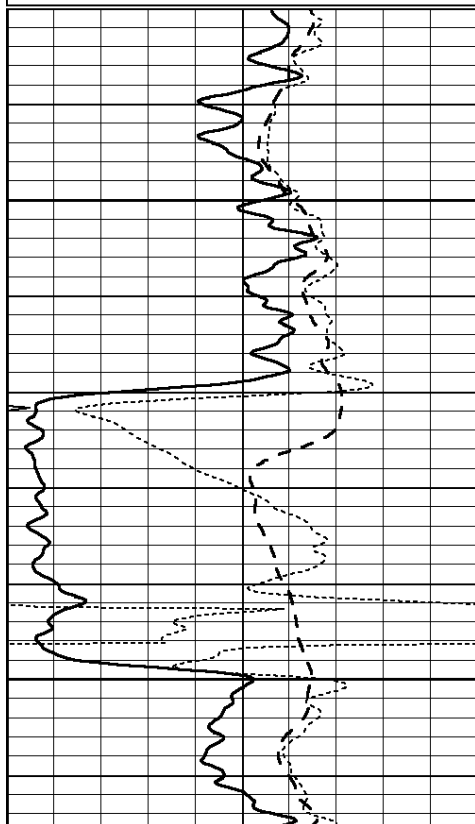
SUPERIOR
Hays,
Kansas

ANHYDRITE

Database File: 007292ddn.db
 Dataset Pathname: pass3.12
 Presentation Format: dil
 Dataset Creation: Thu Sep 08 12:31:52 2011
 Charted by: Depth in Feet scaled 1:240

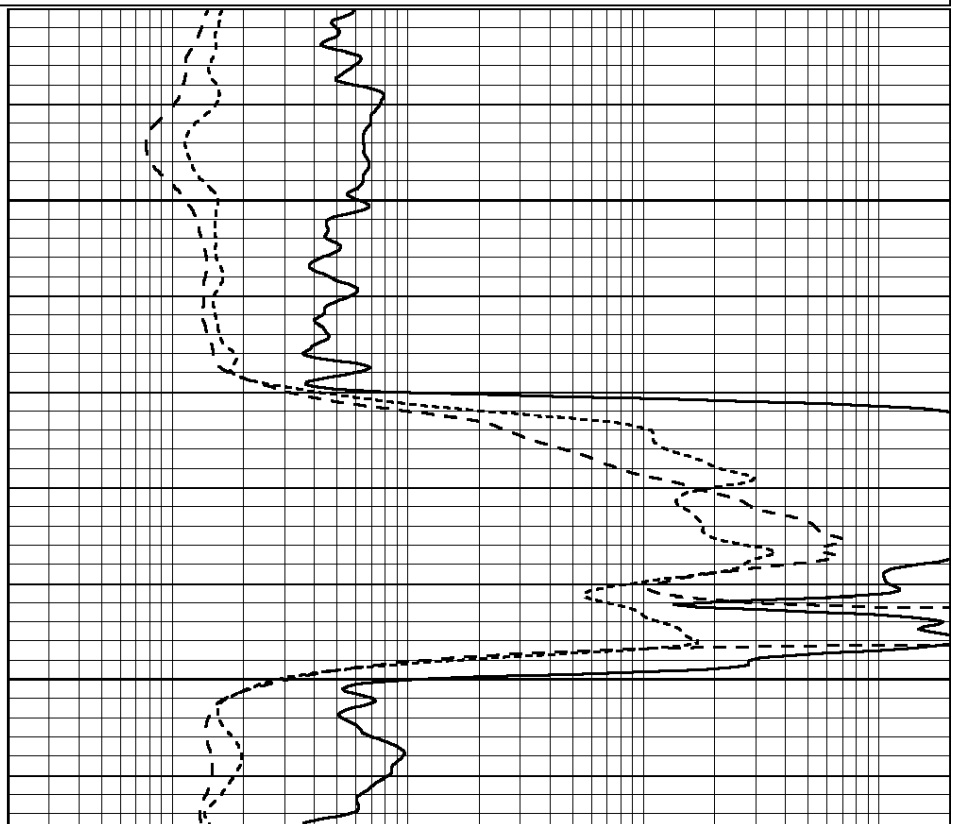
0	GAMMA RAY (GAPI)	150
-100	SP (mV)	100
-250	Rxo/Rt	50
0	MINMK	20

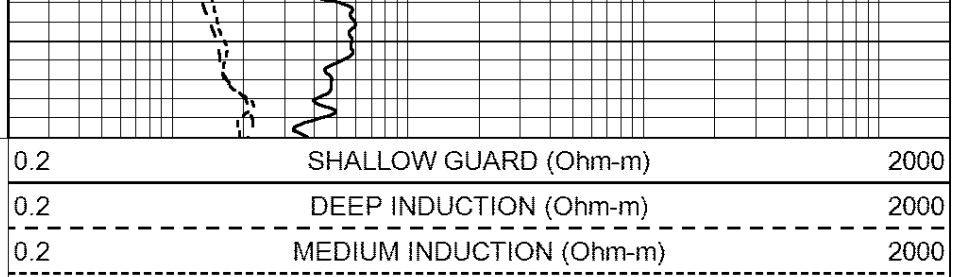
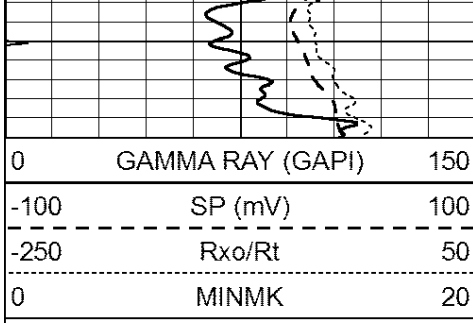
0.2	SHALLOW GUARD (Ohm-m)	2000
0.2	DEEP INDUCTION (Ohm-m)	2000
0.2	MEDIUM INDUCTION (Ohm-m)	2000



2000

2050

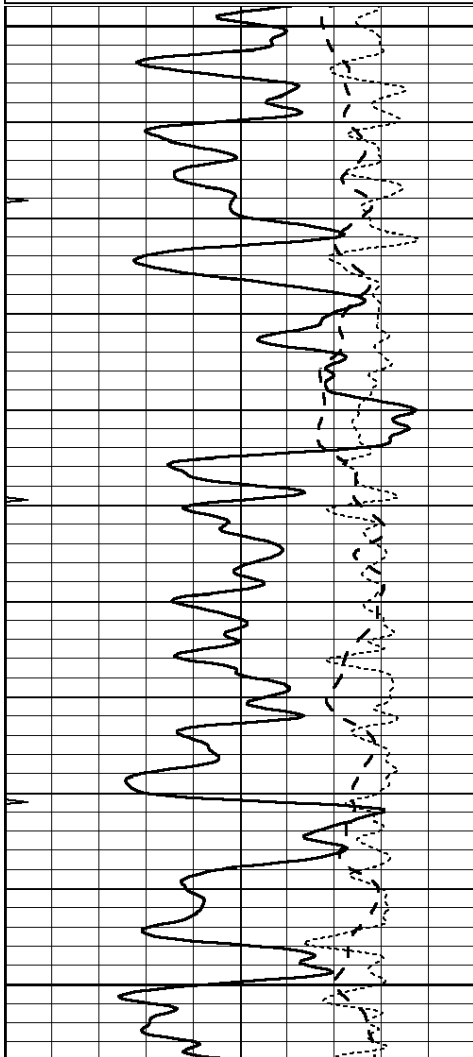
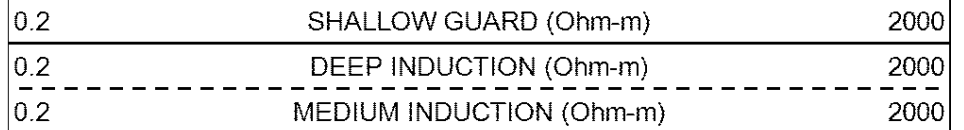
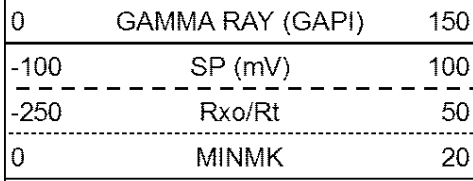




SUPERIOR
Hays,
Kansas

MAIN SECTION

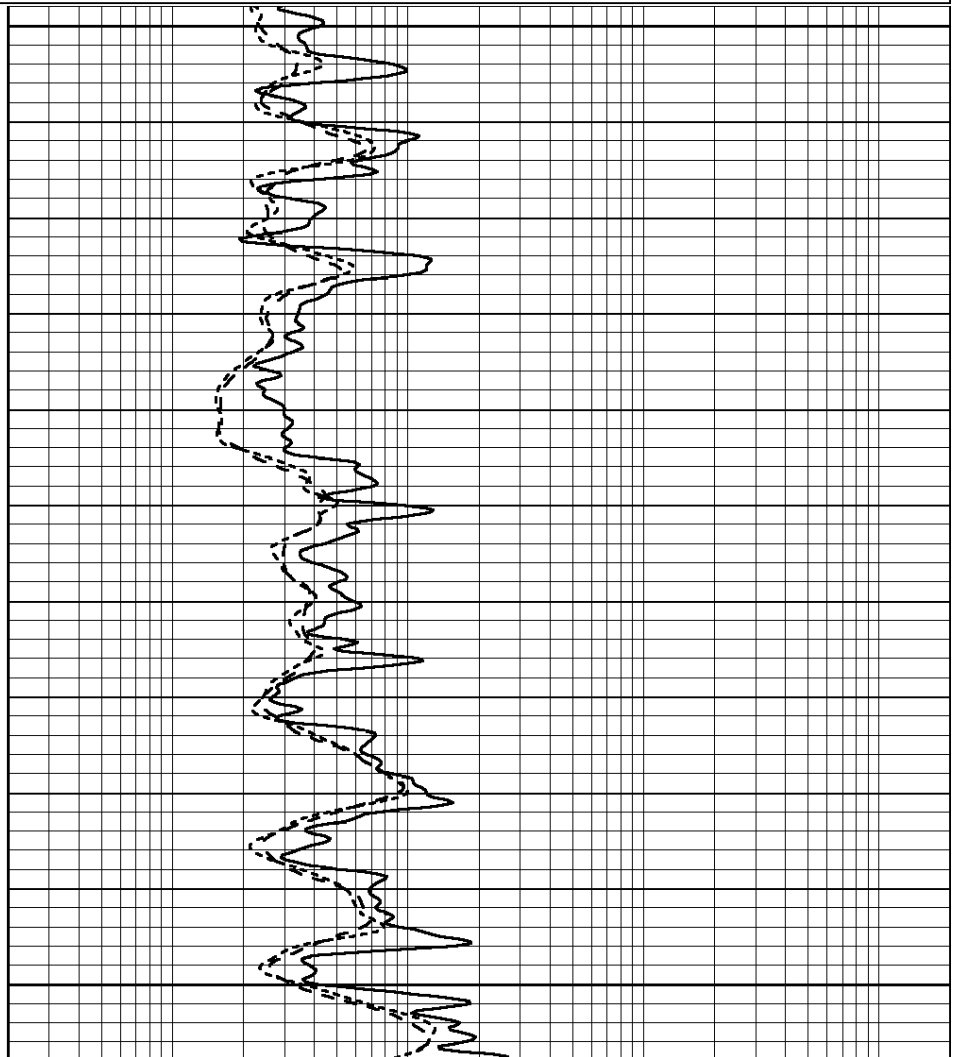
Database File: 007292ddn.db
 Dataset Pathname: pass3.11
 Presentation Format: dil
 Dataset Creation: Thu Sep 08 12:31:39 2011
 Charted by: Depth in Feet scaled 1:240

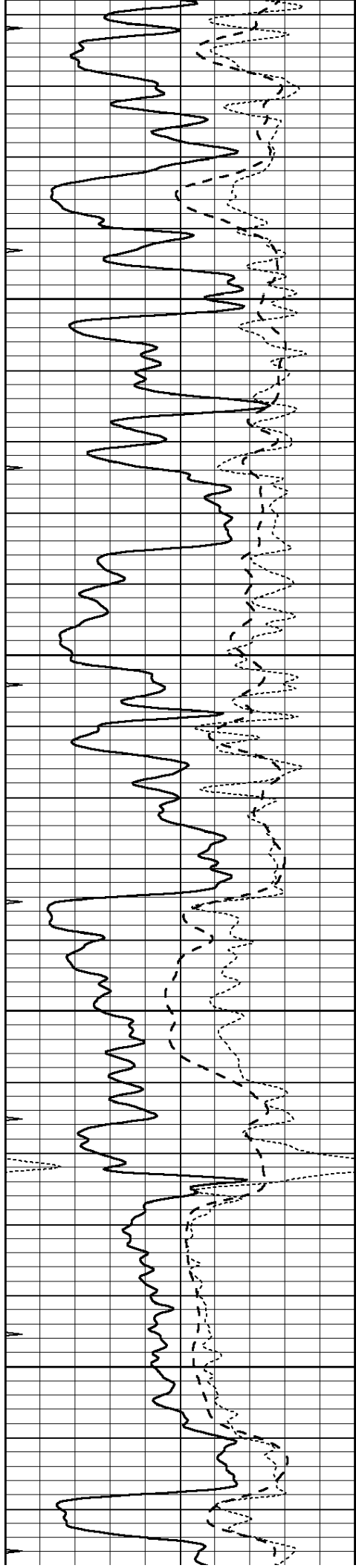


3100

3150

3200



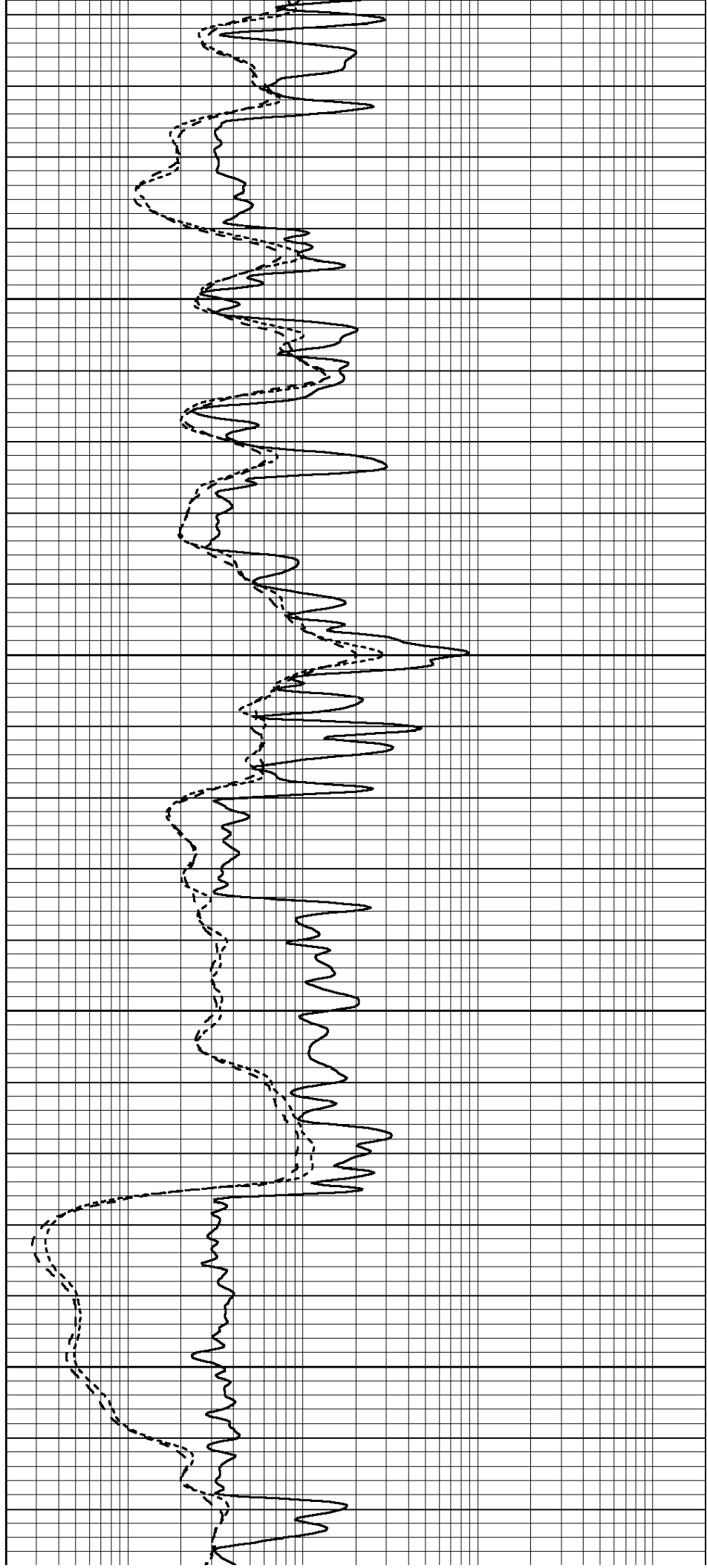


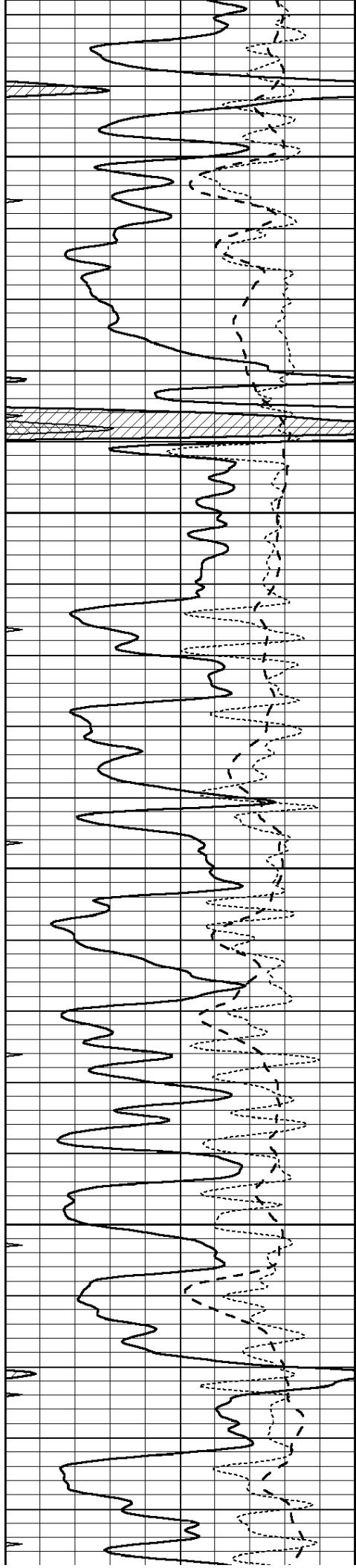
3250

3300

3350

3400



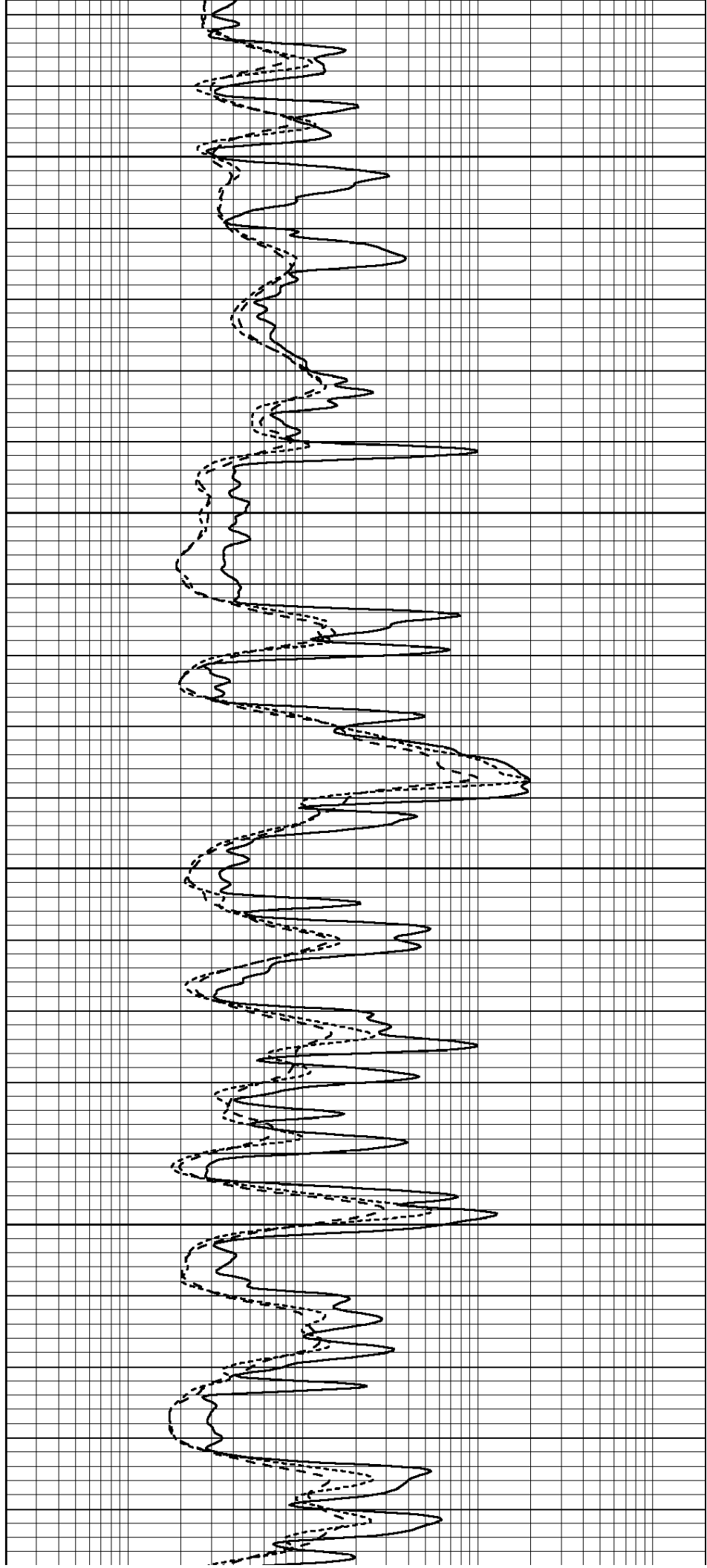


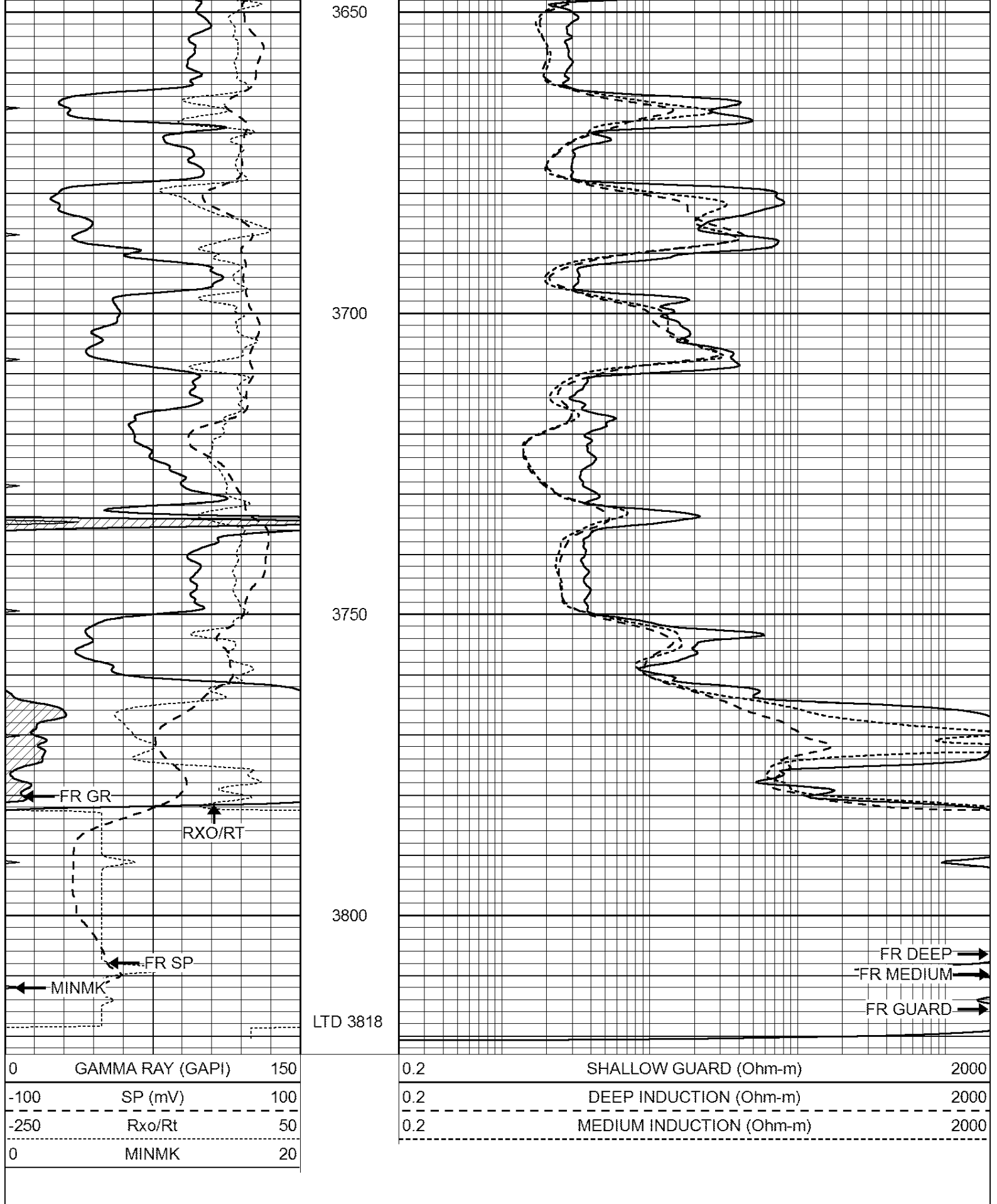
3450

3500

3550

3600





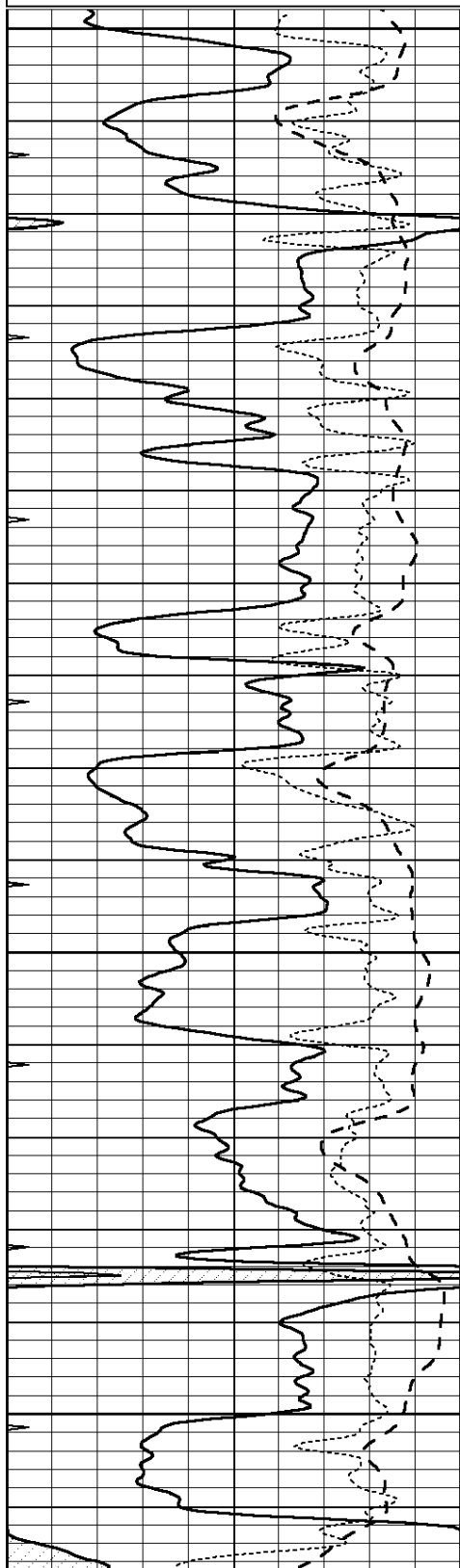
SUPERIOR
Hays,
Kansas

REPEAT SECTION

Database File: 007292ddn.db
 Dataset Pathname: pass2.12
 Presentation Format: dil
 Dataset Creation: Thu Sep 08 12:07:01 2011 by Calc Open-Cased 110302
 Charted by: Depth in Feet scaled 1:240

0	GAMMA RAY (GAPI)	150
-100	SP (mV)	100
-250	Rxo/Rt	50
0	MINMK	20

0.2	SHALLOW GUARD (Ohm-m)	2000
0.2	DEEP INDUCTION (Ohm-m)	2000
0.2	MEDIUM INDUCTION (Ohm-m)	2000

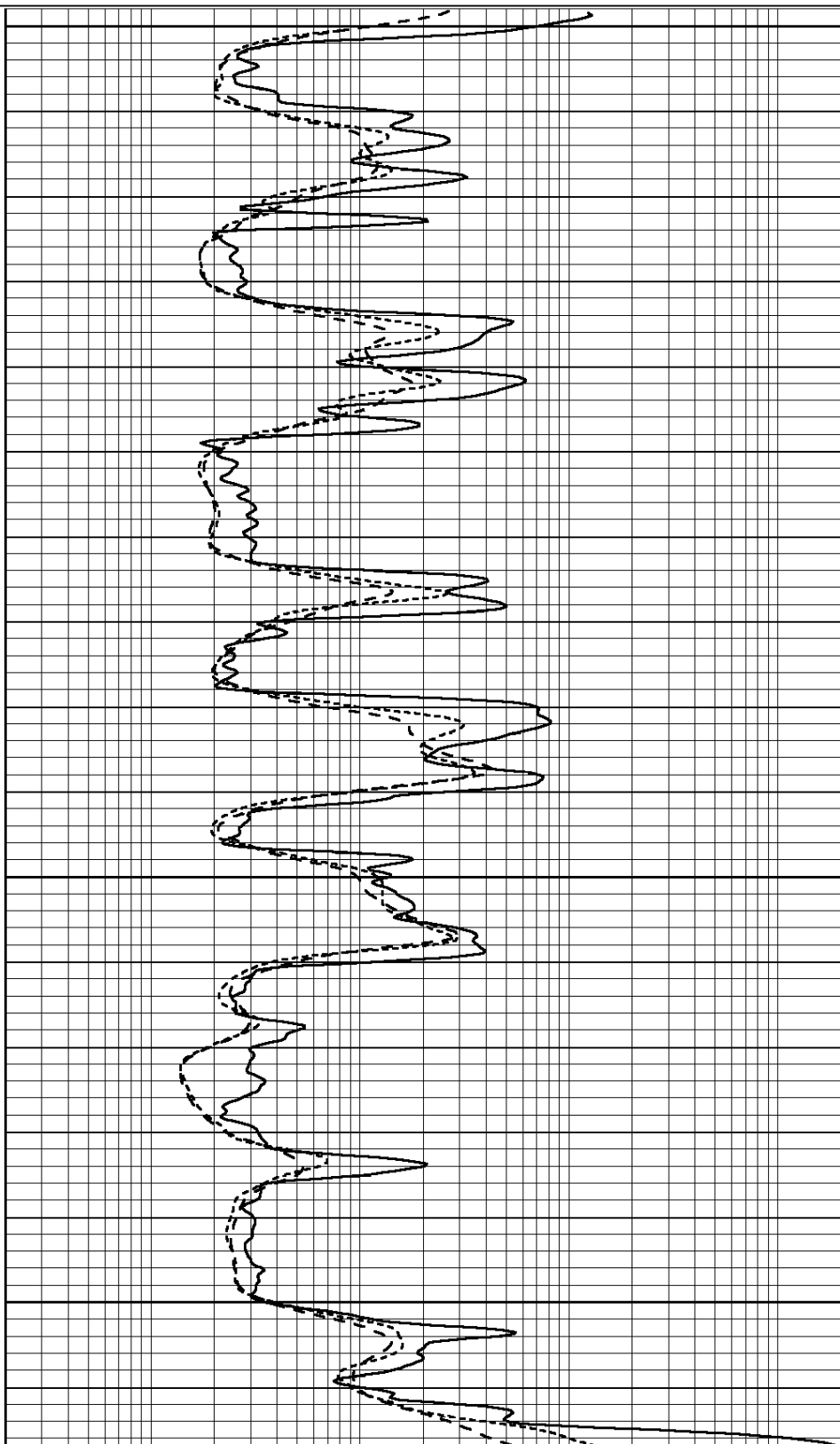


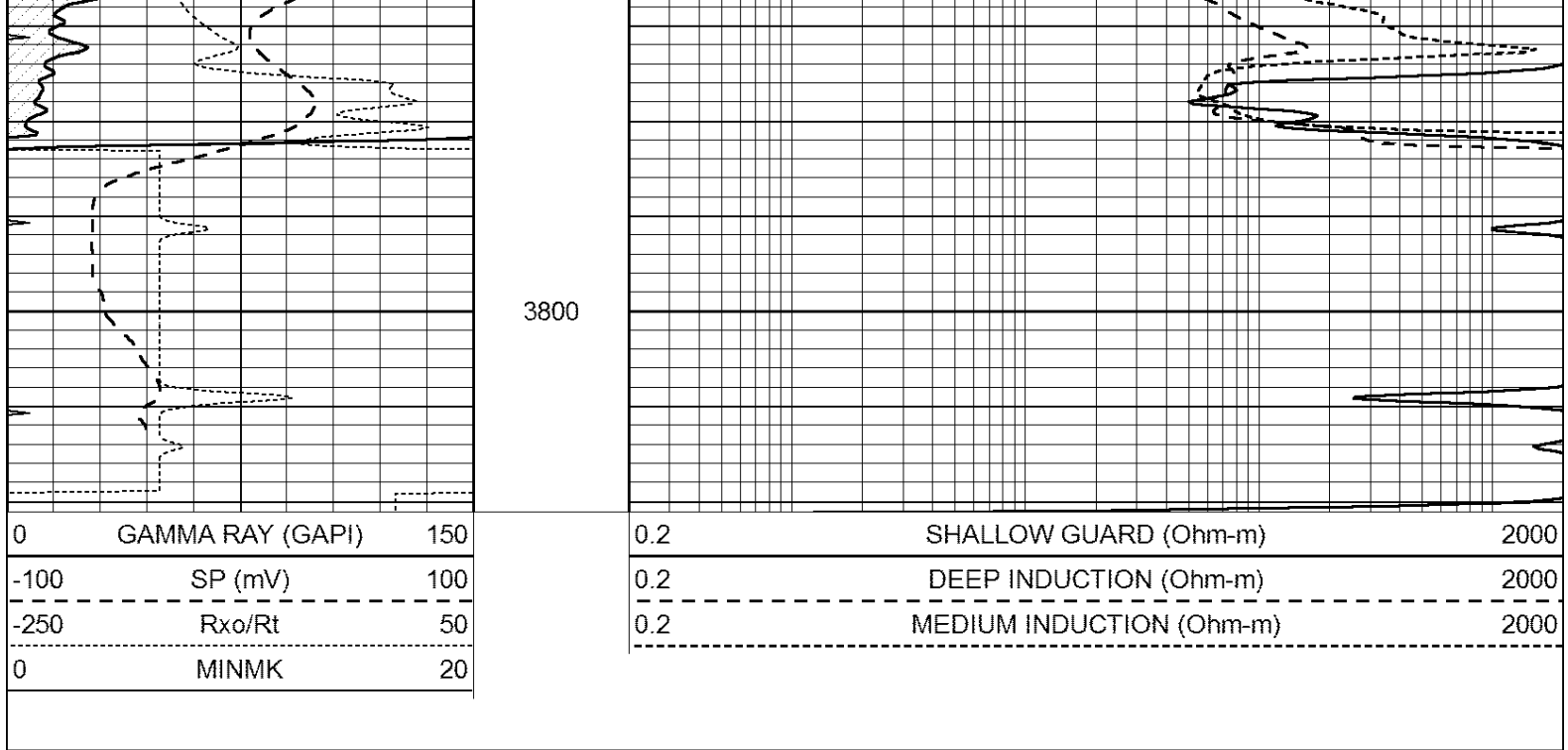
3600

3650

3700

3750





Calibration Report

Database File: 007292ddn.db
 Dataset Pathname: pass3.11
 Dataset Creation: Thu Sep 08 12:31:39 2011

Dual Induction Calibration Report

Serial-Model: DIL3-GEAR
 Performed: Thu Sep 08 10:31:48 2011

Loop:	Readings				References		Results	
	Air	Loop			Air	Loop	m	b
Deep	0.011	0.656	V	0.000	400.000	mmho/m	640.000	0.000
Medium	0.013	0.740	V	0.000	462.500	mmho/m	700.000	-10.000
Internal:	Zero	Cal		Zero	Cal		m	b
Deep	0.002	0.645	V	0.000	400.000	mmho/m	622.059	-1.071
Medium	0.007	0.740	V	0.000	462.500	mmho/m	631.393	-4.555

Litho Density Calibration Report

Serial: 004N Model: PRB
 Performed Tue Sep 08 13:49:55 2009

Litho Density Calibration

	Background	Magnesium	Aluminum	Sandstone	
Window 1	1535.8	11161.3	3721.6	12498.8	cps
Window 2	1402.6	9435.7	3219.7	10417.7	cps
Window 3	1077.6	4422.0	1779.2	4753.4	cps
Window 4	337.3	342.8	337.4	343.7	cps
Long Space	0.0	8033.1	1817.0	9015.1	cps
Short Space	1.2	1671.8	1138.1	1813.0	cps
Rho		1.7100	2.5900	1.3800	g/cc
Pe			2.5700	1.5500	

Rib Angle : 45.5 Rib Slope : 1.017 Density/Spine Ratio : 0.573
 Spine Angle : 75.5 Spine Slope : 3.865 Spine Intercept : -19.7

Caliper

Low Ref Readings
High Ref 2.8
 4.6
 Gain: 3.6

Reference
8.4
15.0

Offset: -1.6

Compensated Neutron Calibration Report

Serial Number: NEU_1I
Tool Model: G

CALIBRATION

Detector	Readings	Target	Normalization
Short Space	1.00 cps	1.00 cps	1.0000
Long Space	1.00 cps	1.00 cps	1.0000

Gamma Ray Calibration Report

Serial Number: GR1
Tool Model: OPEN
Performed: Thu Sep 08 10:31:28 2011

Calibrator Value: 200.0 GAPI

Background Reading: 3.0 cps
Calibrator Reading: 186.0 cps

Sensitivity: 0.2500 GAPI/cps