



SUPERIOR
Hays,
Kansas

**COMPENSATED
DENSITY / NEUTRON
LOG**

Company AMERICAN ENERGIES CORP.
Well ARNDT #2-34
Field WILDCAT
County NORTON
State KANSAS

Company AMERICAN ENERGIES CORPORATION
Well ARNDT #2-34
Field WILDCAT
County NORTON State KANSAS

Location: API # : 15-137-20582-0000
1980' FSL & 330' FWL
W/2 - NW - SW
SEC 34 TWP 3S RGE 23W
Permanent Datum GROUND LEVEL Elevation 2441
Log Measured From KELLY BUSHING 5' A.G.L.
Drilling Measured From KELLY BUSHING
Other Services DIL/MEL
Elevation K.B. 2448
D.F. 2444
G.L. 2441

Date	9/8/11		
Run Number	ONE		
Depth Driller	3816		
Depth Logger	3818		
Bottom Logged Interval	3794		
Top Log Interval	3100		
Casing Driller	8 5/8"@344'		
Casing Logger	345		
Bit Size	7 7/8"		
Type Fluid in Hole	CHEMICAL MUD	CHLORIDES 1,900 PPM	
Density / Viscosity	9.1/55		
pH / Fluid Loss	10.0/6.8		
Source of Sample	FLOWLINE		
Rm @ Meas. Temp	1.80@80F		
Rmt @ Meas. Temp	1.35@80F		
Rmc @ Meas. Temp	2.16@80F		
Source of Rmf / Rmc	MEASUREMENT		
Rm @ BHT	1.26@114F		
Time Circulation Stopped	2 HOURS		
Time Logger on Bottom	11:15 A.M.		
Maximum Recorded Temperature	114F		
Equipment Number	4010		
Location	HAYS, KANSAS		
Recorded By	JEFF LUEBBERS		
Witnessed By	DAVE GOLDAK		

<<< Fold Here >>>

All interpretations are opinions based on inferences from electrical or other measurements and we cannot and do not guarantee the accuracy or correctness of any interpretation, and we shall not, except in the case of gross or willful negligence on our part, be liable or responsible for any loss, costs, damages, or expenses incurred or sustained by anyone resulting from any interpretation made by any of our officers, agents or employees. These interpretations are also subject to our general terms and conditions set out in our current Price Schedule.

Comments

THANK YOU FOR USING SUPERIOR WELL SERVICE HAYS, KANSAS (785) 628-6395
DIRECTIONS
N. OF HILL CITY, KS. (JUNCTION OF HWY 283 & 9) 8N. ON HWY 283, KS. TO "RD. S", 1W., 1/2N., E. INTO

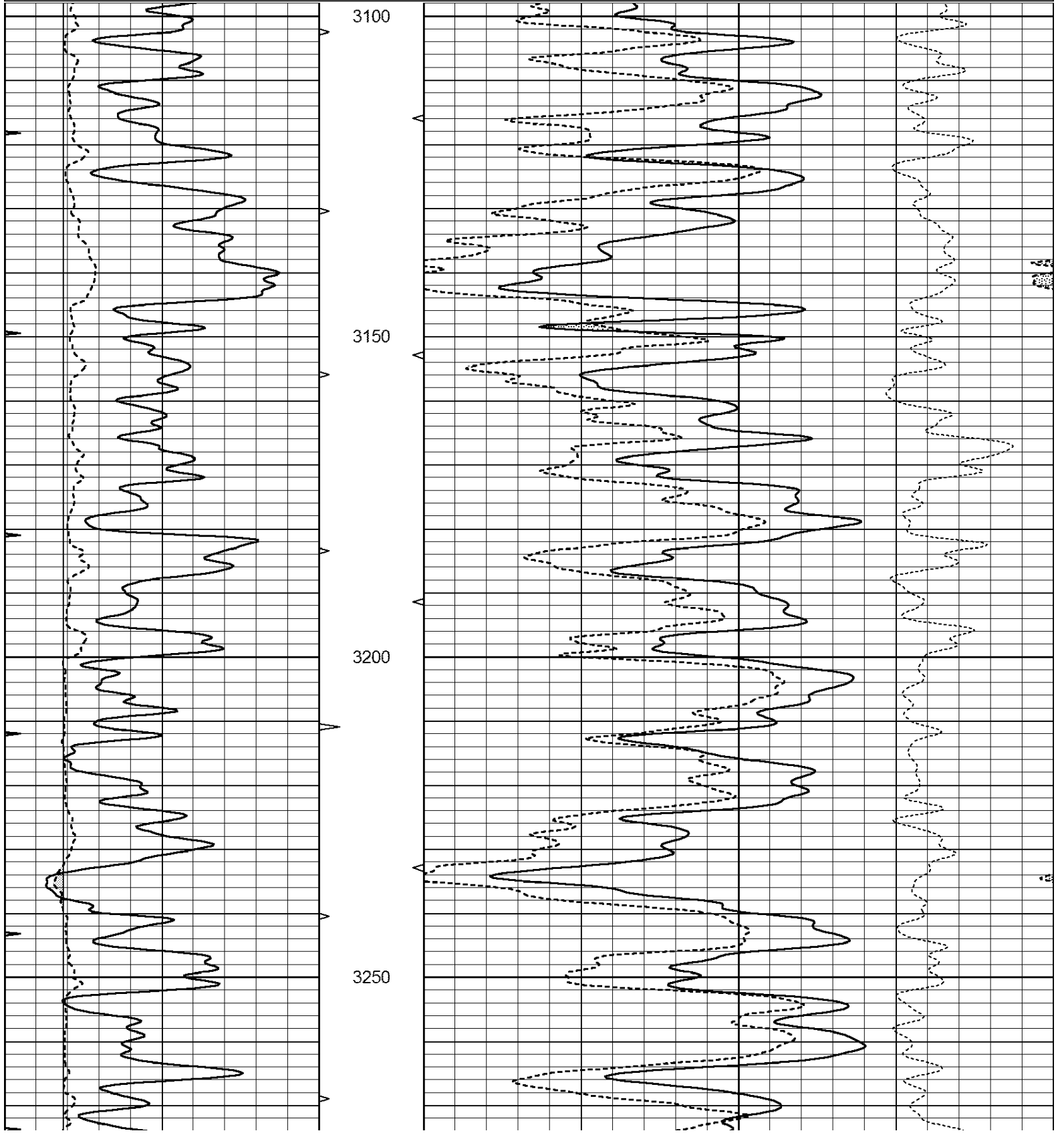


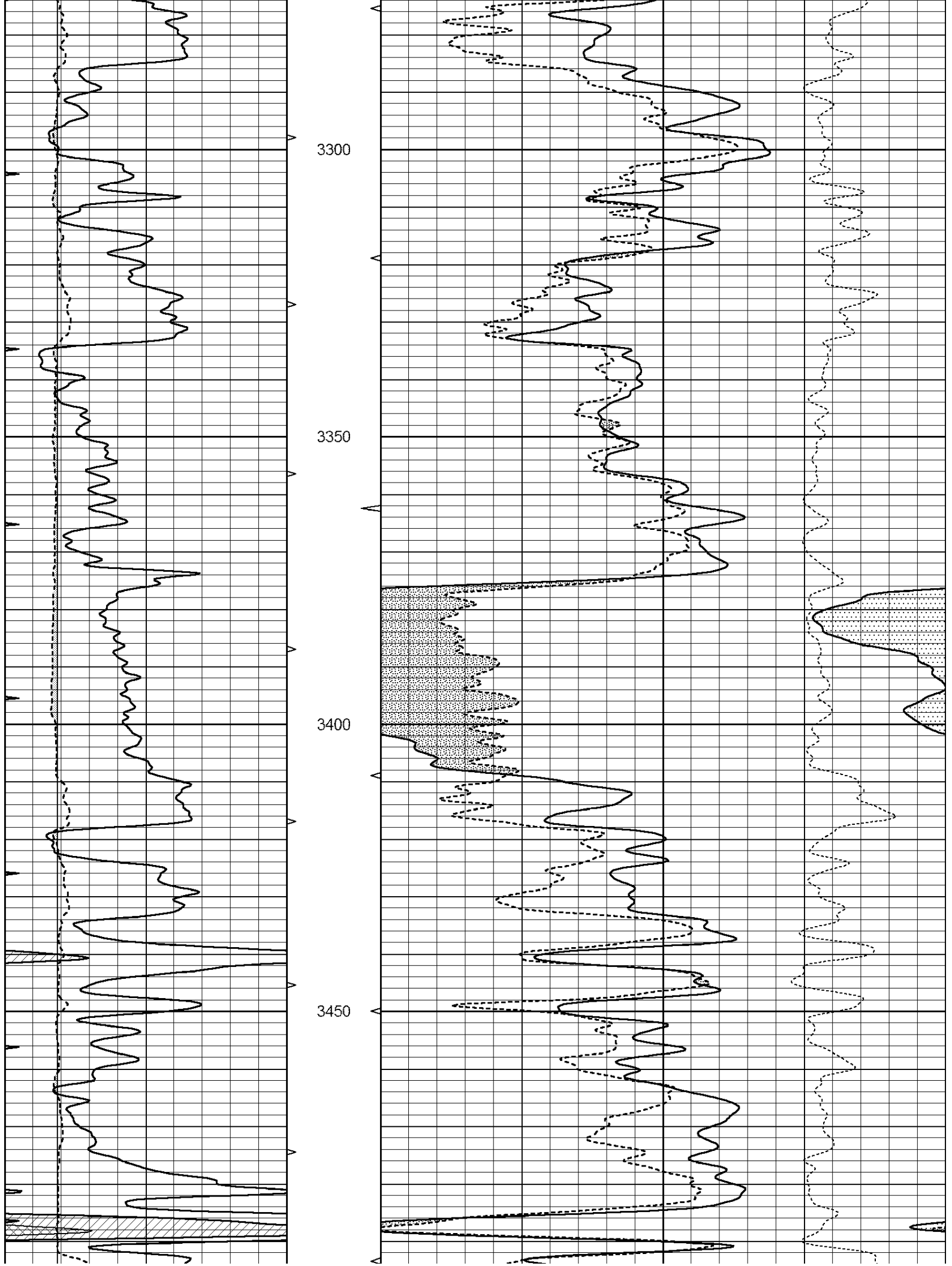
SUPERIOR
Hays,
Kansas

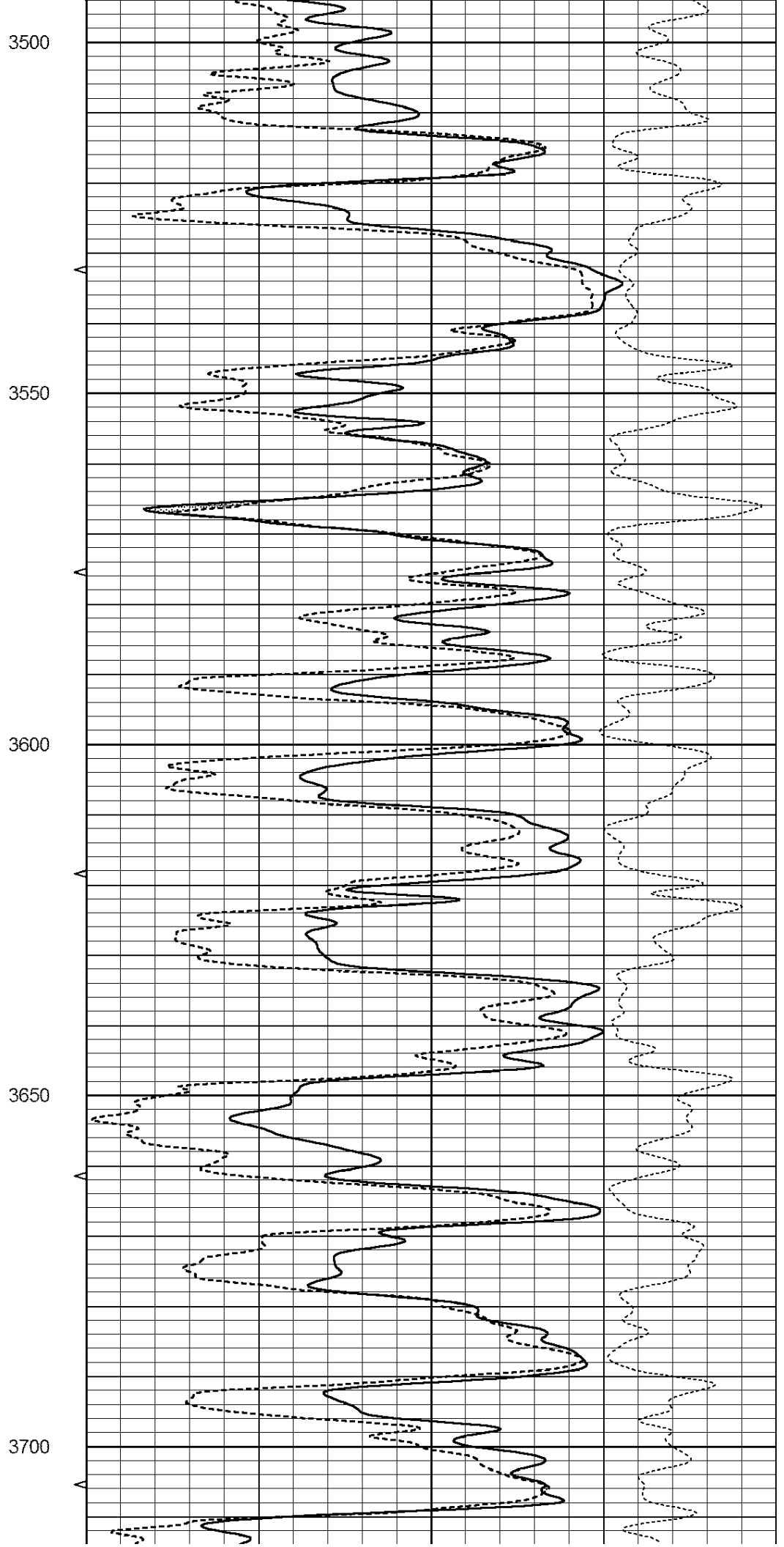
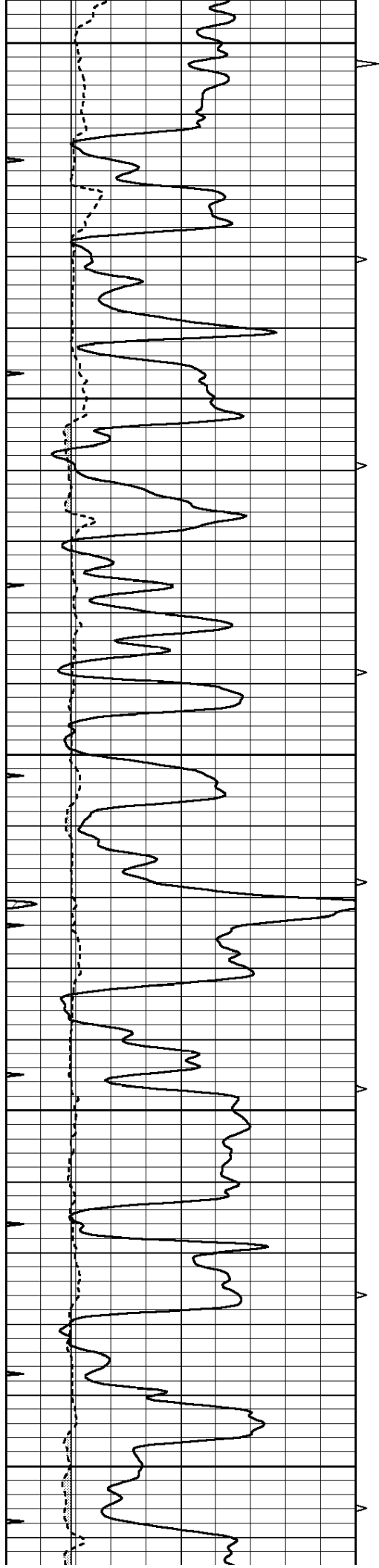
MAIN SECTION

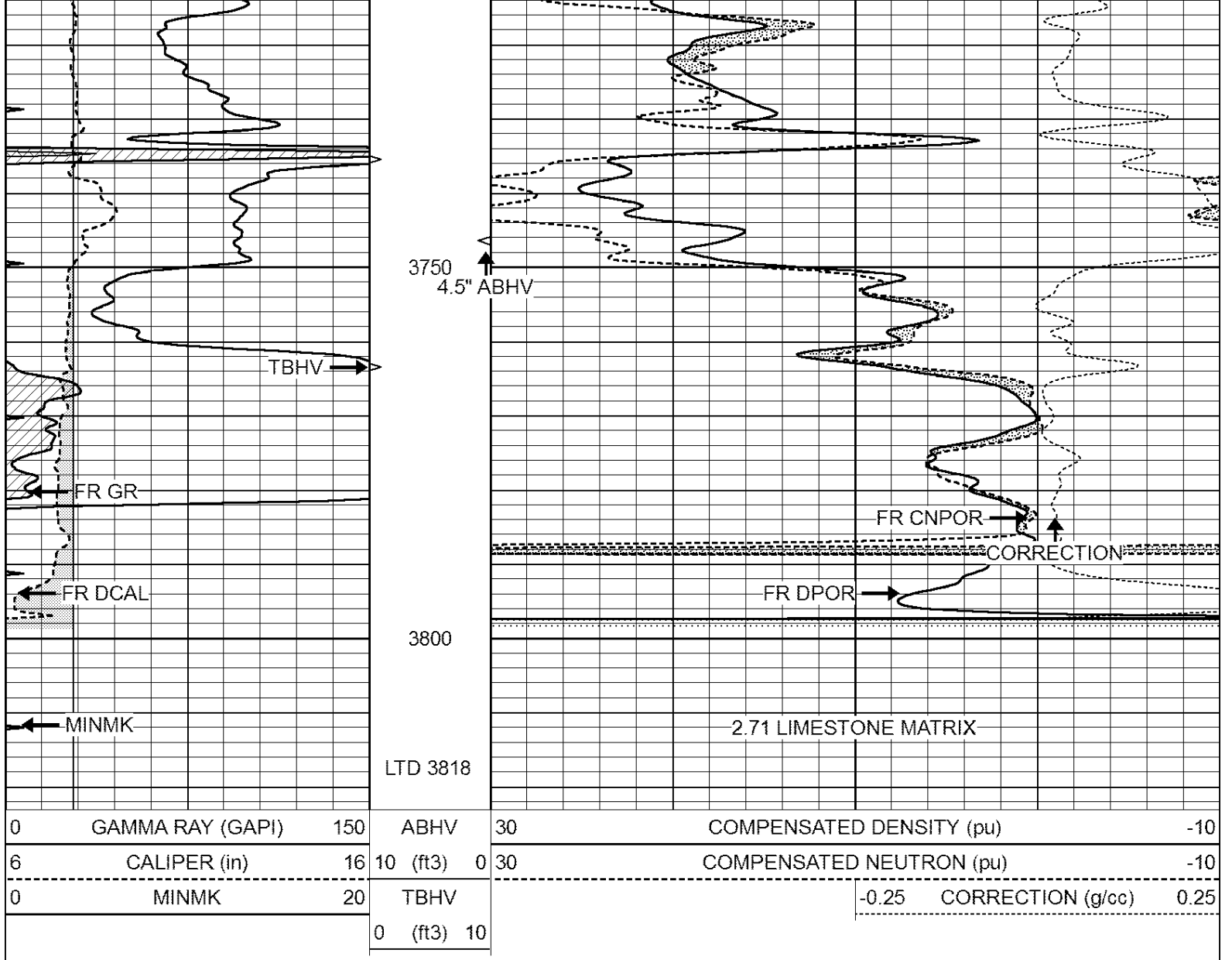
Database File: 007292ddn.db
 Dataset Pathname: pass3.11
 Presentation Format: den_neu
 Dataset Creation: Thu Sep 08 12:31:39 2011
 Charted by: Depth in Feet scaled 1:240

0	GAMMA RAY (GAPI)	150	ABHV	30	COMPENSATED DENSITY (pu)	-10
6	CALIPER (in)	16	10 (ft3)	0 30	COMPENSATED NEUTRON (pu)	-10
0	MINMK	20	TBHV		-0.25 CORRECTION (g/cc)	0.25
			0 (ft3)	10		







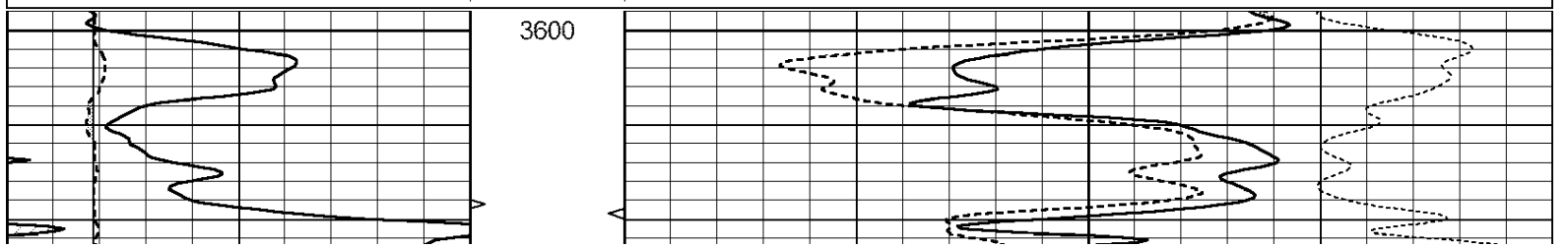


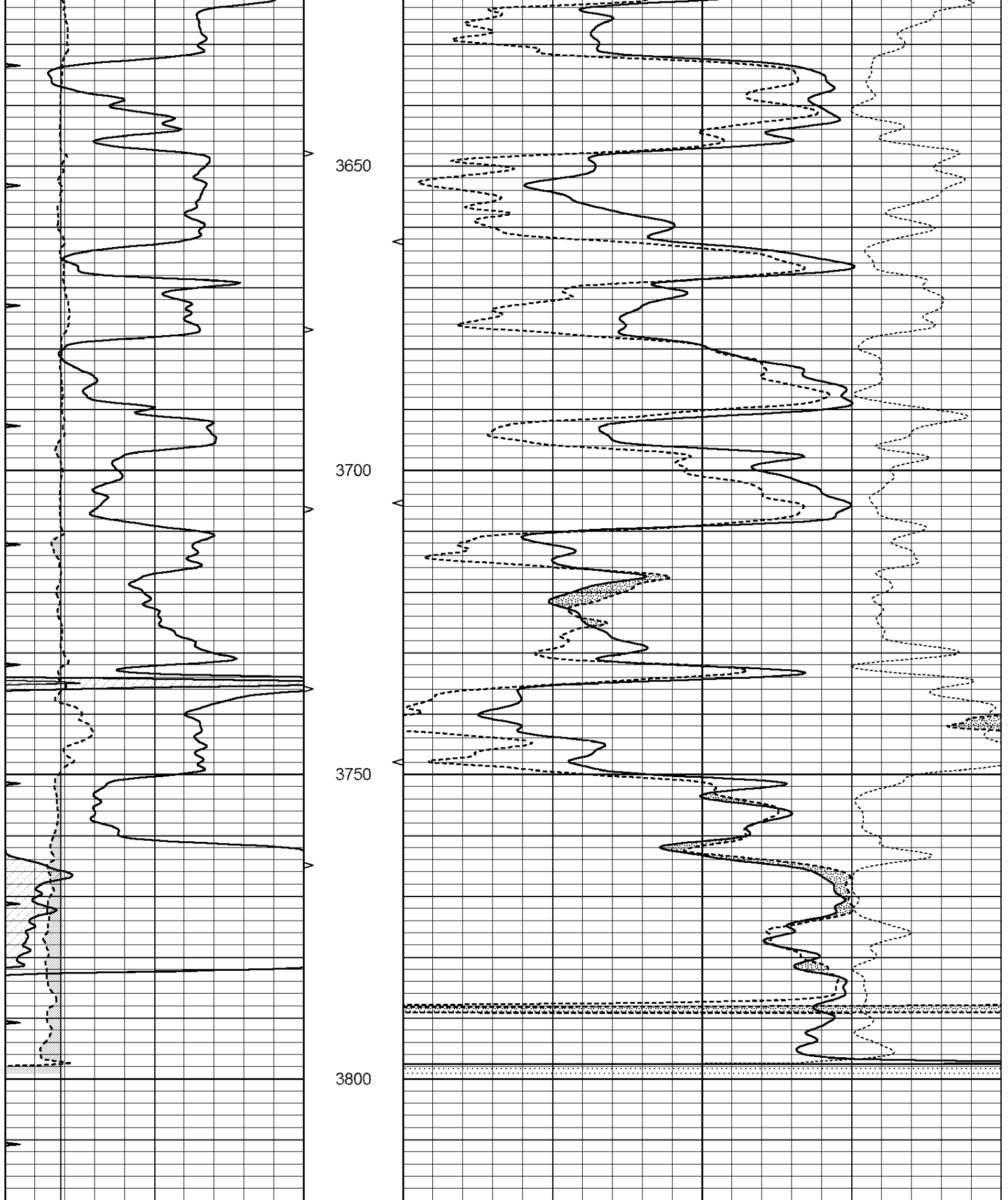
SUPERIOR
Hays,
Kansas

REPEAT SECTION

Database File: 007292ddn.db
 Dataset Pathname: pass2.12
 Presentation Format: den_neu
 Dataset Creation: Thu Sep 08 12:07:01 2011 by Calc Open-Cased 110302
 Charted by: Depth in Feet scaled 1:240

0	GAMMA RAY (GAPI)	150	ABHV	30	COMPENSATED DENSITY (pu)	-10
6	CALIPER (in)	16	10 (ft3)	0 30	COMPENSATED NEUTRON (pu)	-10
0	MINMK	20	TBHV		-0.25	CORRECTION (g/cc) 0.25
			0 (ft3)	10		





0	GAMMA RAY (GAPI)	150	ABHV	30	COMPENSATED DENSITY (pu)	-10
6	CALIPER (in)	16	10 (ft3)	0 30	COMPENSATED NEUTRON (pu)	-10
0	MINMK	20	TBHV		-0.25 CORRECTION (g/cc)	0.25
			0 (ft3)	10		

Calibration Report

Database File: 007292ddn.db
 Dataset Pathname: pass3.11
 Dataset Creation: Thu Sep 08 12:31:39 2011

Dual Induction Calibration Report

Serial-Model: DIL3-GEAR
 Performed: Thu Sep 08 10:31:48 2011

Loop:	Readings			References			Results	
	Air	Loop		Air	Loop		m	b
Deep	0.011	0.656	V	0.000	400.000	mmho/m	640.000	0.000
Medium	0.013	0.740	V	0.000	462.500	mmho/m	700.000	-10.000
Internal:	Zero	Cal		Zero	Cal		m	b
Deep	0.002	0.645	V	0.000	400.000	mmho/m	622.059	-1.071
Medium	0.007	0.740	V	0.000	462.500	mmho/m	631.393	-4.555

Litho Density Calibration Report
 Serial: 004N Model: PRB
 Performed Tue Sep 08 13:49:55 2009

Litho Density Calibration

	Background	Magnesium	Aluminum	Sandstone	
Window 1	1535.8	11161.3	3721.6	12498.8	cps
Window 2	1402.6	9435.7	3219.7	10417.7	cps
Window 3	1077.6	4422.0	1779.2	4753.4	cps
Window 4	337.3	342.8	337.4	343.7	cps
Long Space	0.0	8033.1	1817.0	9015.1	cps
Short Space	1.2	1671.8	1138.1	1813.0	cps
Rho		1.7100	2.5900	1.3800	g/cc
Pe			2.5700	1.5500	
Rib Angle	: 45.5	Rib Slope	: 1.017	Density/Spine Ratio	: 0.573
Spine Angle	: 75.5	Spine Slope	: 3.865	Spine Intercept	: -19.7

Caliper

	Readings	Reference	
Low Ref	2.8	8.4	
High Ref	4.6	15.0	
Gain: 3.6			Offset: -1.6

Compensated Neutron Calibration Report

Serial Number: NEU_11
 Tool Model: G

CALIBRATION

Detector	Readings	Target	Normalization
Short Space	1.00 cps	1.00 cps	1.0000
Long Space	1.00 cps	1.00 cps	1.0000

Gamma Ray Calibration Report

Serial Number: GR1
 Tool Model: OPEN
 Performed: Thu Sep 08 10:31:28 2011

Calibrator Value: 200.0 GAPI

Calibrator Value:	200.0	GAPI
Background Reading:	3.0	cps
Calibrator Reading:	186.0	cps
Sensitivity:	0.2500	GAPI/cps