



**SUPERIOR**  
Hays,  
Kansas

**MICRO**  
LOG

Company AMERICAN ENERGIES CORP.  
Well ARNDT #2-34  
Field WILDCAT  
County NORTON  
State KANSAS

Company AMERICAN ENERGIES CORPORATION  
Well ARNDT #2-34  
Field WILDCAT  
County NORTON State KANSAS

Location: API # : 15-137-20582-0000  
1980' FSL & 330' FWL  
W/2 - NW - SW  
SEC 34 TWP 3S RGE 23W  
Permanent Datum GROUND LEVEL Elevation 2441  
Log Measured From KELLY BUSHING 5' A.G.L.  
Drilling Measured From KELLY BUSHING  
Other Services CDL/CNL DIL  
Elevation K.B. 2448 D.F. 2444 G.L. 2441

Date	9/8/11		
Run Number	TWO		
Depth Driller	3816		
Depth Logger	3818		
Bottom Logged Interval	3816		
Top Log Interval	3100		
Casing Driller	8 5/8"@344'		
Casing Logger	345		
Bit Size	7 7/8"		
Type Fluid in Hole	CHEMICAL MUD	CHLORIDES 1,900 PPM	
Density / Viscosity	9.1/55		
pH / Fluid Loss	10.0/6.8		
Source of Sample	FLOWLINE		
Rm @ Meas. Temp	1.80@80F		
Rmt @ Meas. Temp	1.35@80F		
Rmc @ Meas. Temp	2.16@80F		
Source of Rmf / Rmc	MEASUREMENT		
Rm @ BHT	1.26@114F		
Time Circulation Stopped	3.5 HOURS		
Time Logger on Bottom	11:15 A.M.		
Maximum Recorded Temperature	114F		
Equipment Number	4010		
Location	HAYS, KANSAS		
Recorded By	JEFF LUEBBERS		
Witnessed By	DAVE GOLDAK		

<<< Fold Here >>>

All interpretations are opinions based on inferences from electrical or other measurements and we cannot and do not guarantee the accuracy or correctness of any interpretation, and we shall not, except in the case of gross or willful negligence on our part, be liable or responsible for any loss, costs, damages, or expenses incurred or sustained by anyone resulting from any interpretation made by any of our officers, agents or employees. These interpretations are also subject to our general terms and conditions set out in our current Price Schedule.

**Comments**

THANK YOU FOR USING SUPERIOR WELL SERVICE HAYS, KANSAS (785) 628-6395  
DIRECTIONS  
N. OF HILL CITY, KS. (JUNCTION OF HWY 283 & 9) 8N. ON HWY 283, KS. TO "RD. S", 1W., 1/2N., E. INTO

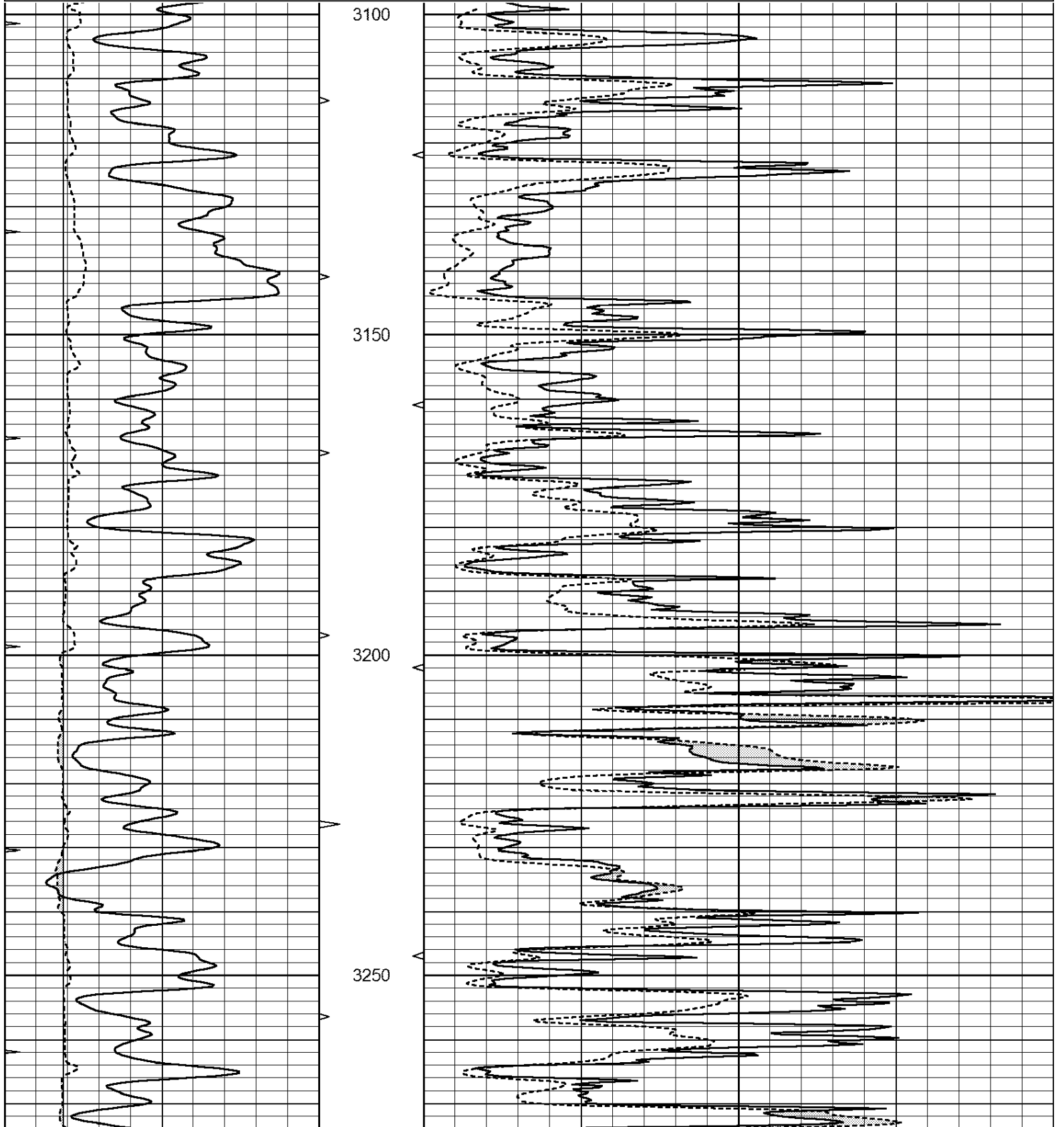


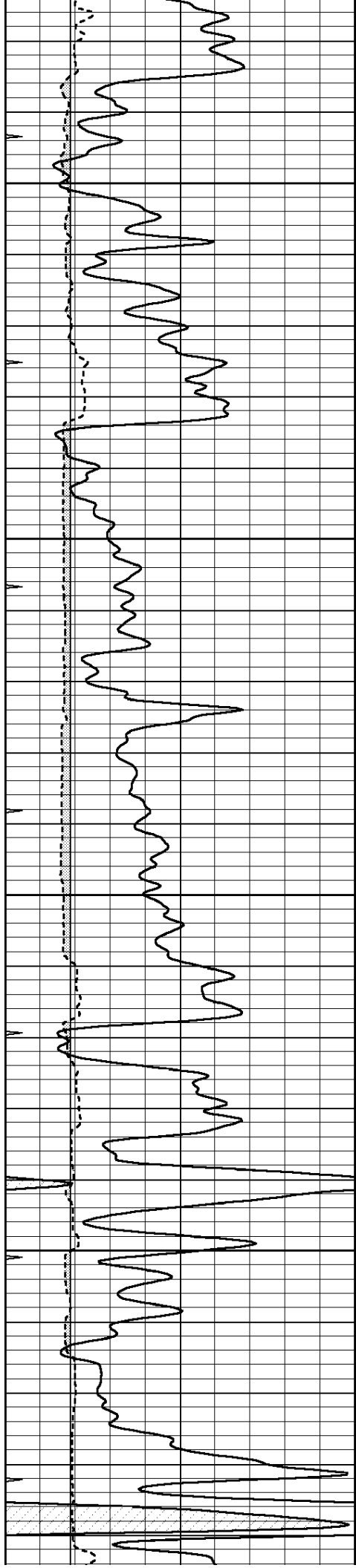
**SUPERIOR**  
Hays,  
Kansas

**MAIN SECTION**

Database File: 007292ddn.db  
 Dataset Pathname: pass6.2  
 Presentation Format: micro  
 Dataset Creation: Thu Sep 08 13:49:29 2011 by Calc Open-Cased 110302  
 Charted by: Depth in Feet scaled 1:240

0	GAMMA RAY (GAPI)	150	ABHV	0	MEL1.5 (Ohm-m)	40
6	CALIPER (in)	16	10 (ft3)	0	MEL2.0 (Ohm-m)	40
0	MINMK	20	TBHV			
			0 (ft3)	10		



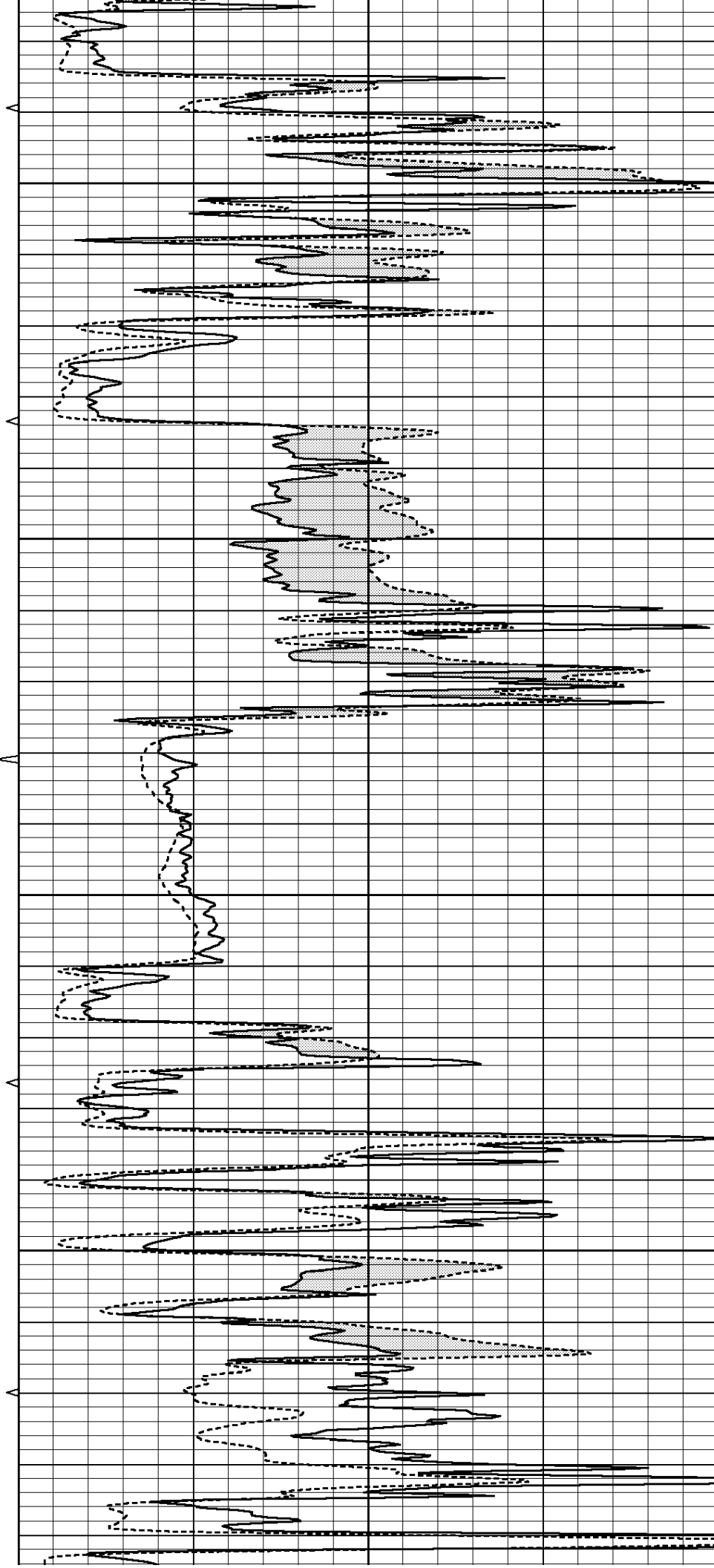


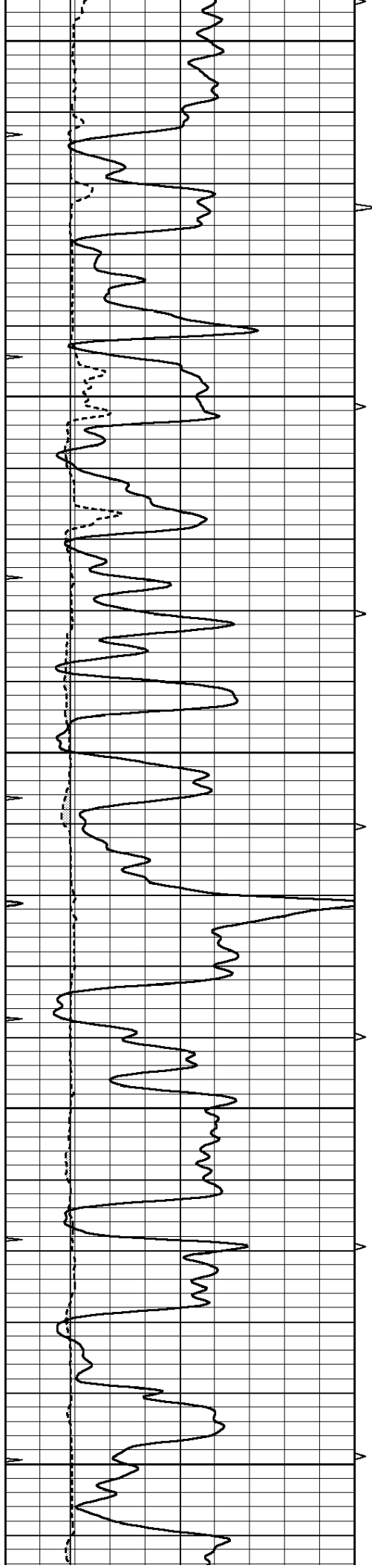
3300

3350

3400

3450





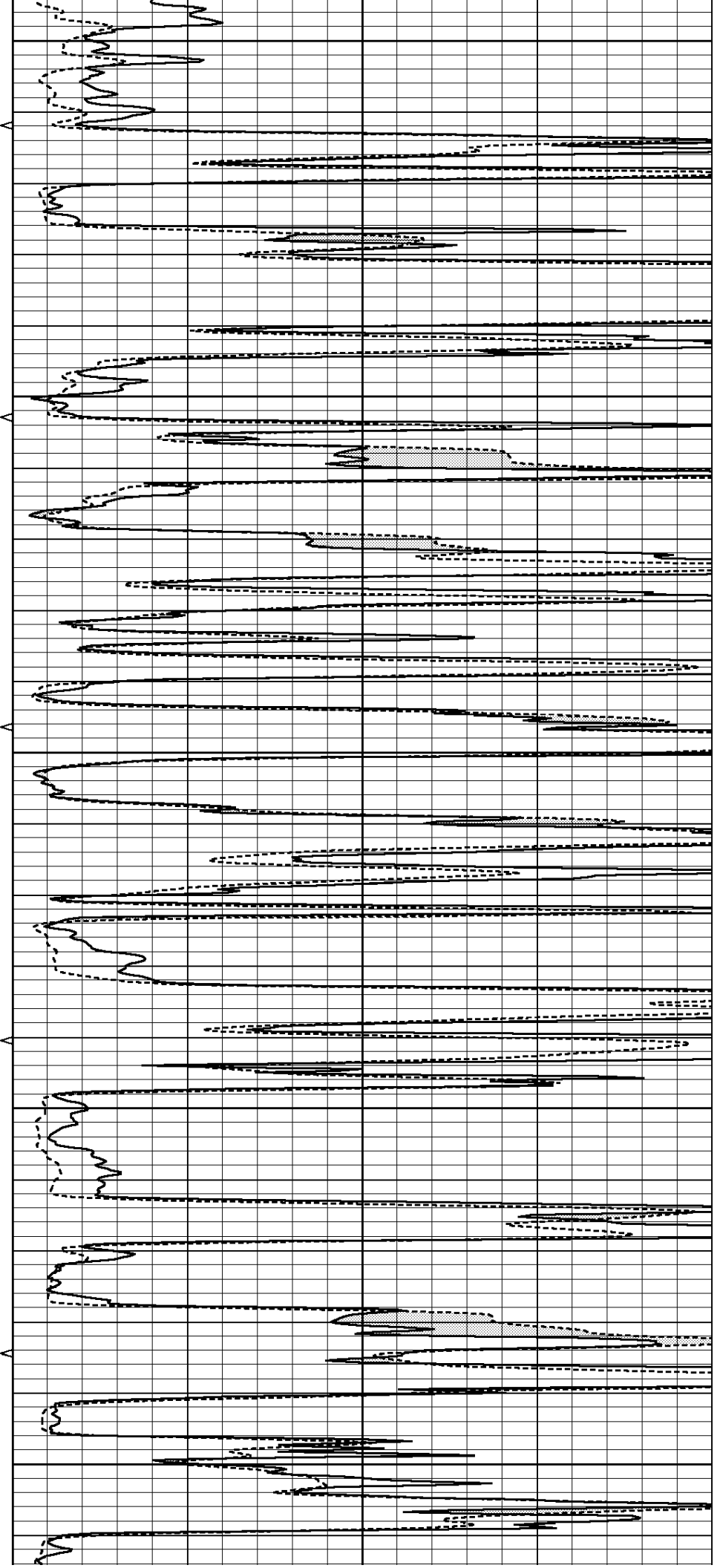
3500

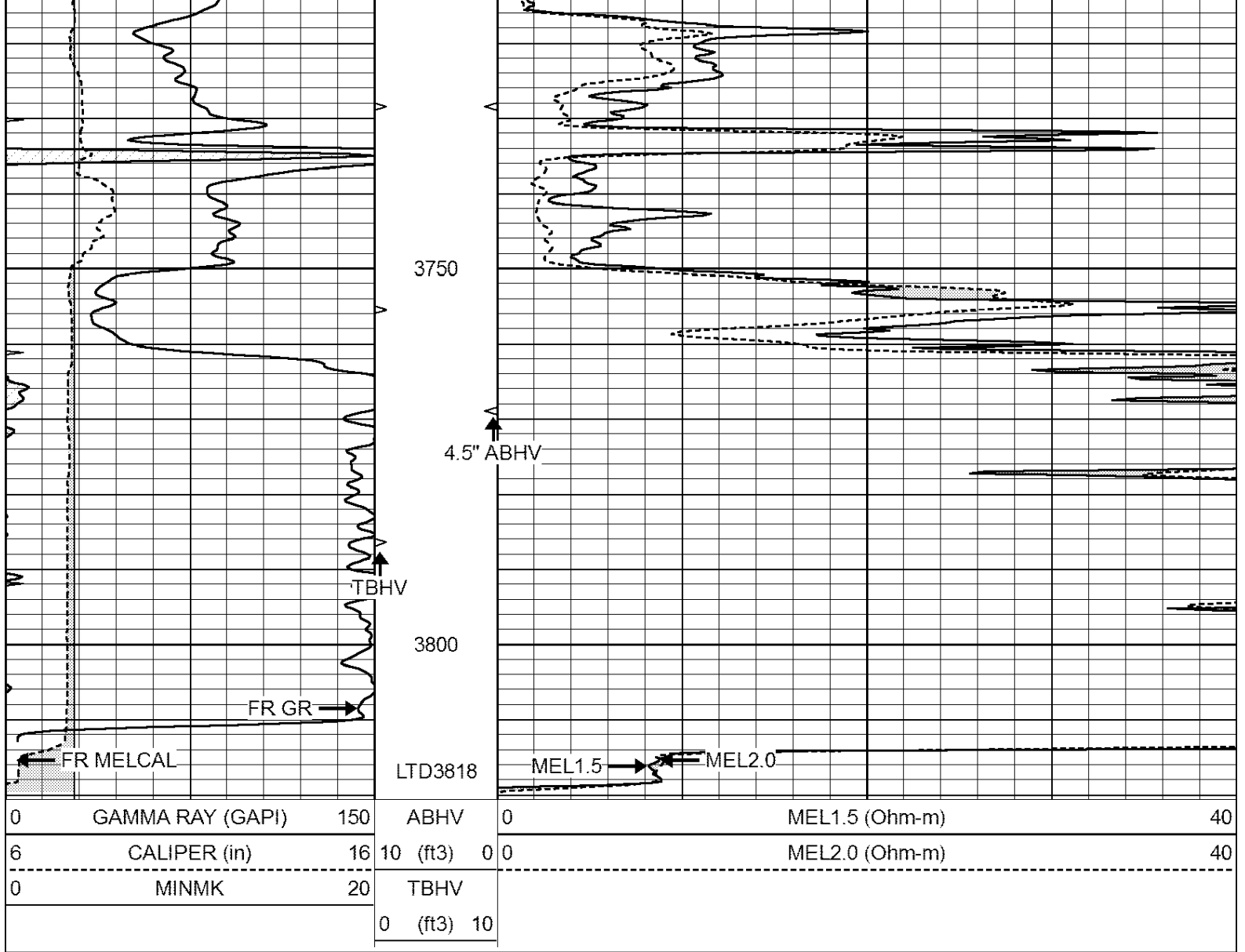
3550

3600

3650

3700



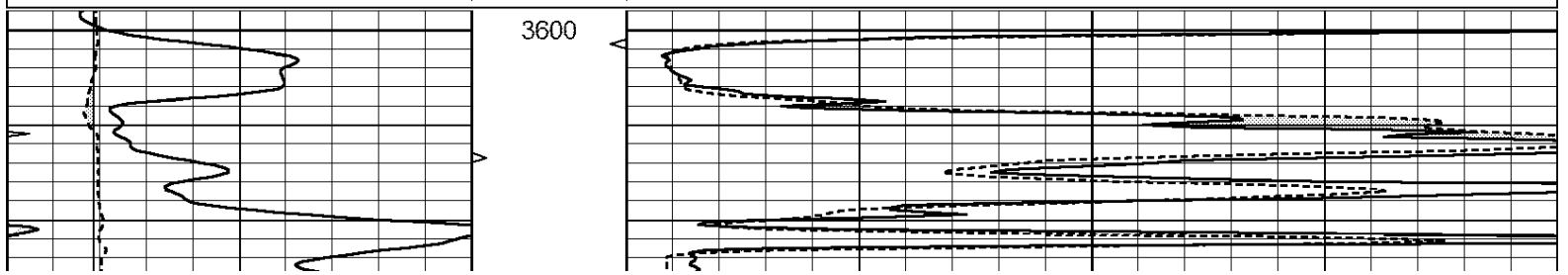


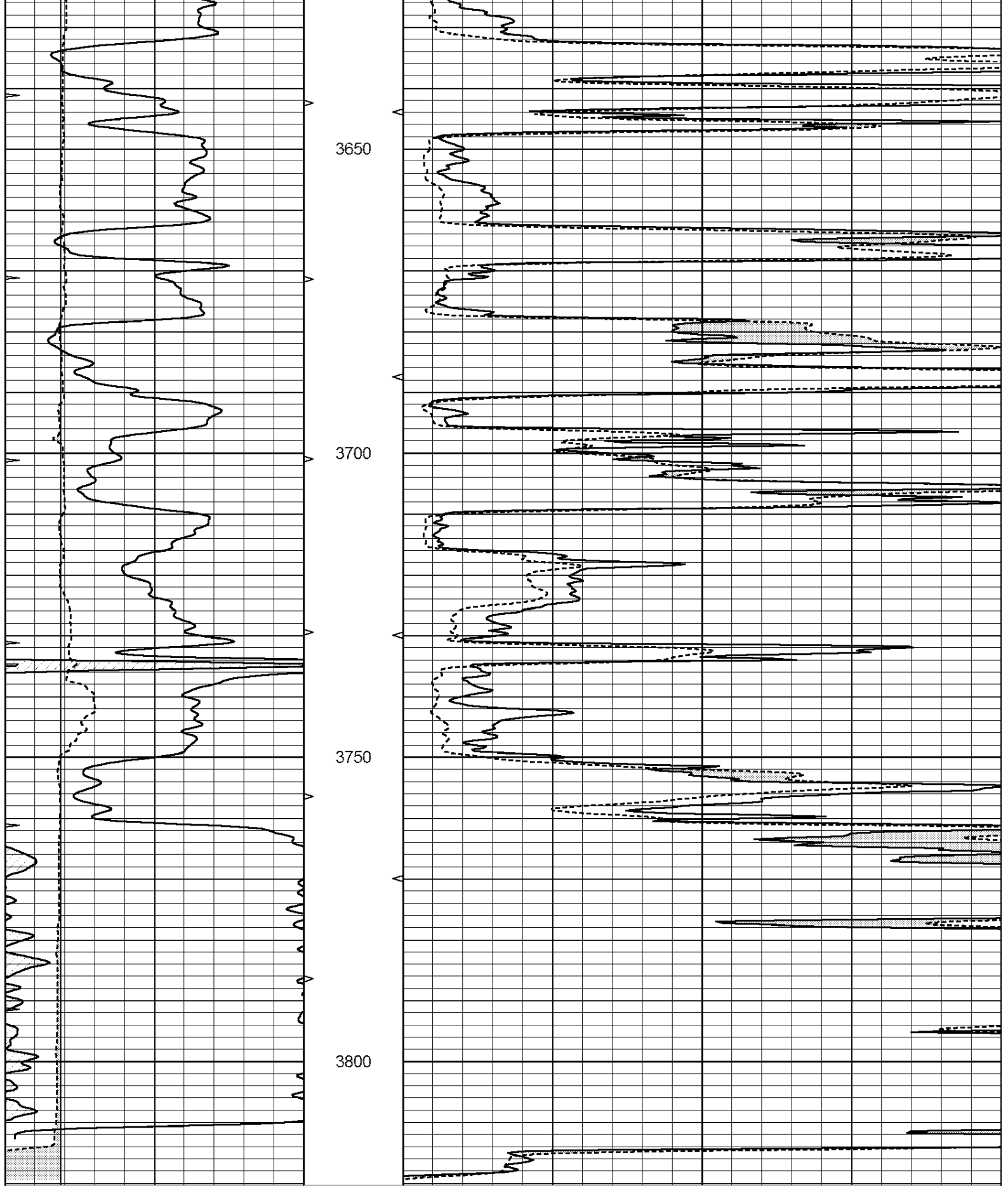
SUPERIOR  
Hays,  
Kansas

# REPEAT SECTION

Database File: 007292ddn.db  
 Dataset Pathname: pass5.2  
 Presentation Format: micro  
 Dataset Creation: Thu Sep 08 13:41:44 2011 by Calc Open-Cased 110302  
 Charted by: Depth in Feet scaled 1:240

0	GAMMA RAY (GAPI)	150	ABHV	0	MEL1.5 (Ohm-m)	40
6	CALIPER (in)	16	10 (ft3)	0	MEL2.0 (Ohm-m)	40
0	MINMK	20	TBHV			
			0 (ft3)	10		





0	GAMMA RAY (GAPI)	150	ABHV	0	MEL1.5 (Ohm-m)	40
6	CALIPER (in)	16	10 (ft3)	0 0	MEL2.0 (Ohm-m)	40
0	MINMK	20	TBHV			
			0 (ft3)	10		

Calibration Report

Database File: 007292ddn.db  
 Dataset Pathname: pass6.2  
 Dataset Creation: Thu Sep 08 13:49:29 2011 by Calc Open-Cased 110302

MICRO Calibration Report

Serial Number: 2  
 Tool Model: PROBE  
 Performed: Thu Sep 08 12:50:01 2011

Caliper Calibration:	Gain=3.753	Offset=3.357
	Low Cal	High Cal
References	7.600	14.000
Readings	1.130	2.835

1.5" Calibration:	Gain=40.000	Offset=-2.000
	Low Cal	High Cal
References	0.000	20.000
Readings	0.065	1.210

2" Calibration:	Gain=53.000	Offset=-1.000
	Low Cal	High Cal
References	0.000	20.000
Readings	0.012	1.043

Gamma Ray Calibration Report

Serial Number: GR3  
 Tool Model: OPEN  
 Performed: Wed Sep 07 18:53:08 2011

Calibrator Value:	200.0	GAPI
Background Reading:	3.0	cps
Calibrator Reading:	186.0	cps
Sensitivity:	0.8000	GAPI/cps