



DIGITAL LOG (785) 625-3858

Dual Compensated Porosity Log

API No. 15-195-22,705-00-00

Company Pelican Hill Oil & Gas Inc.  
 Well Nelson No. 1-8  
 Field Wildcat  
 County Trego State Kansas

Location SW SE NE NE  
 Sec: 8 Twp: 11S Rge: 21W  
 Other Services DIL MEI/BHCS

Permanent Datum Ground Level Elevation 2138  
 Log Measured From Kelly Bushing 8 Ft. Above Perm. Datum  
 Drilling Measured From Kelly Bushing

K.B. 2146  
 D.F. G.L. 2138

Date 4/18/2011

Run Number One  
 Type Log CNL / CDL  
 Depth Driller 3895  
 Depth Logger 3896  
 Bottom Logged Interval 3875  
 Top Logged Interval 3000  
 Type Fluid In Hole Chemical  
 Salinity, PPM CL 4000  
 Density 9.4  
 Level Full  
 Max. Rec. Temp. F 115  
 Operating Rig Time 4 1/2 Hours  
 Equipment -- Location 10 Hays  
 Recorded By J. Long  
 Witnessed By Chris Bean

Borehole Record				Casing Record			
Run No.	Bit	From	To	Size	Wgt.	From	To
1	12.25	00	268	8.625	24#	00	268
2	7.875	268	3895				

<<< Fold Here >>>

All interpretations are opinions based on inferences from electrical or other measurements and we cannot and do not guarantee the accuracy or correctness of any interpretation, and we shall not, except in the case of gross or willful negligence on our part, be liable or responsible for any loss, costs, damages, or expenses incurred or sustained by anyone resulting from any interpretation made by any of our officers, agents or employees. These interpretations are also subject to our general terms and conditions set out in our current Price Schedule.

Comments

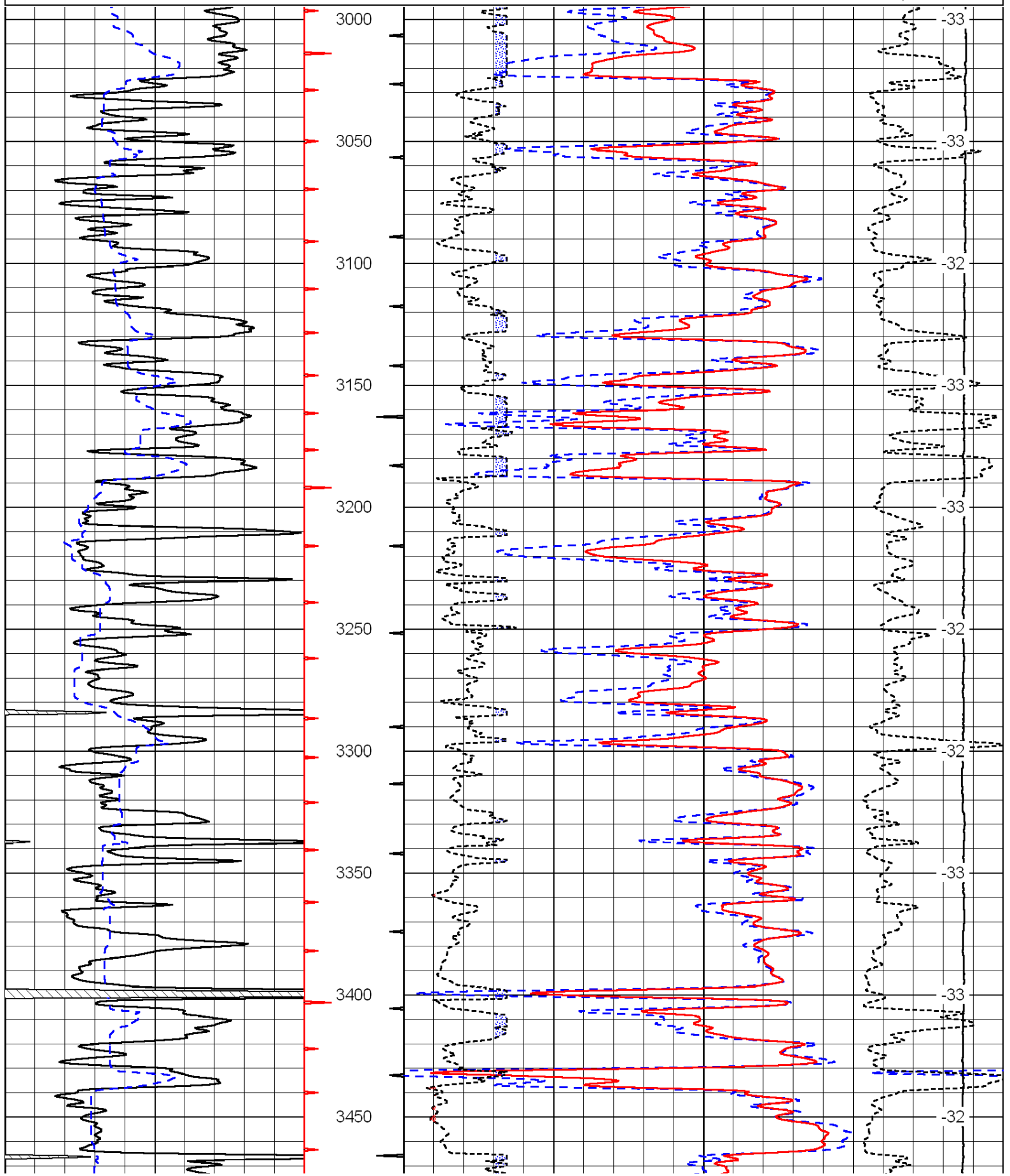
Thank you for using Log-Tech, Inc.  
 (785) 625-3858

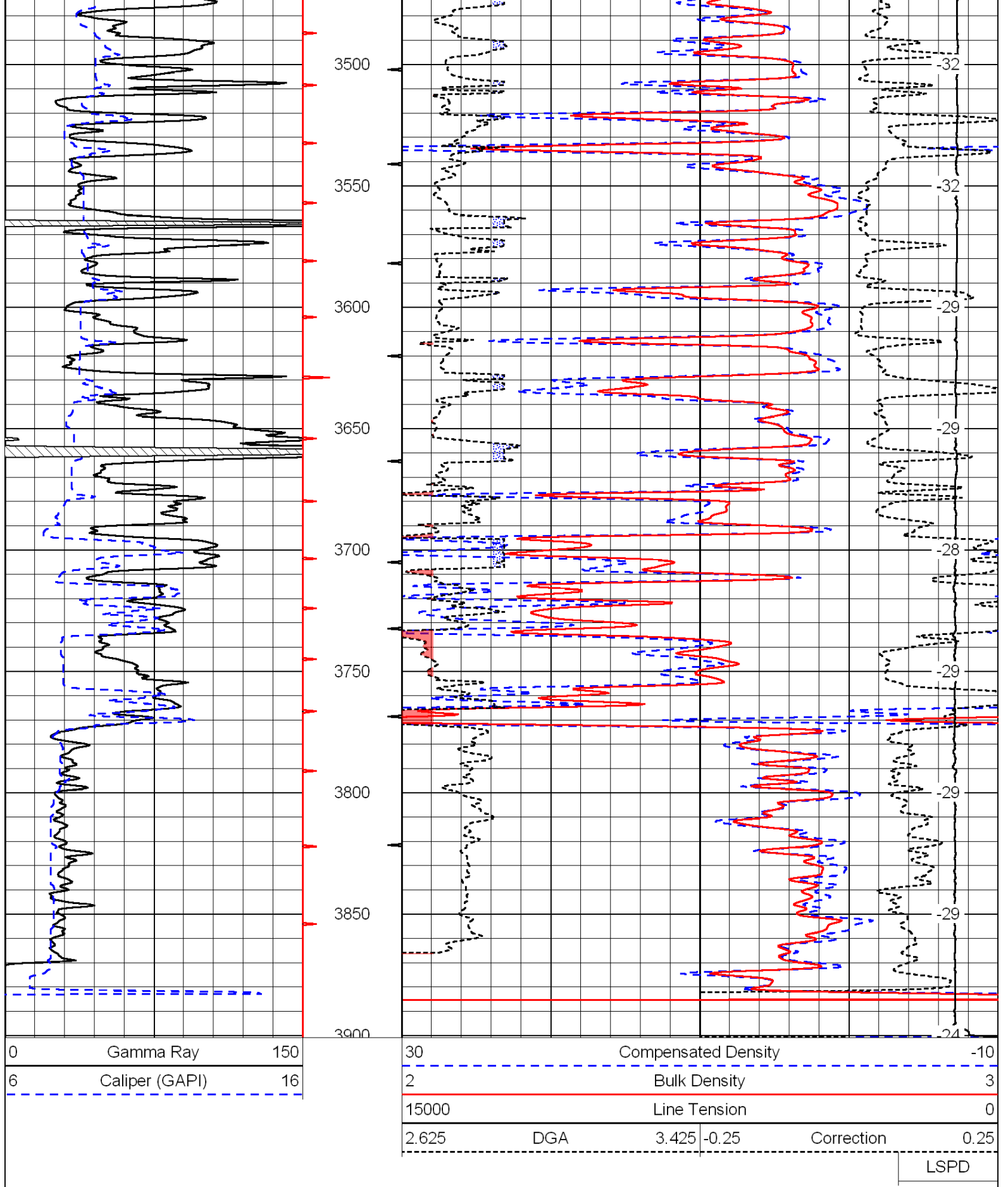
Riga, 11 North to A Rd, 2 West to 360 Avenue, 1 South, East 1/2, South and East Into

Database File: c:\warrior\data\pelican hill\_nelson no. 1-8\pelicanhill\_nelson\_1-8hd.db  
 Dataset Pathname: dil/pelstock  
 Presentation Format: cdl  
 Dataset Creation: Tue Apr 19 00:42:46 2011  
 Charted by: Depth in Feet scaled 1:600

0	Gamma Ray	150
6	Caliper (GAPI)	16

30	Compensated Density		-10
2	Bulk Density		3
15000	Line Tension		0
2.625	DGA	3.425	-0.25
			Correction
			0.25
LSPD			



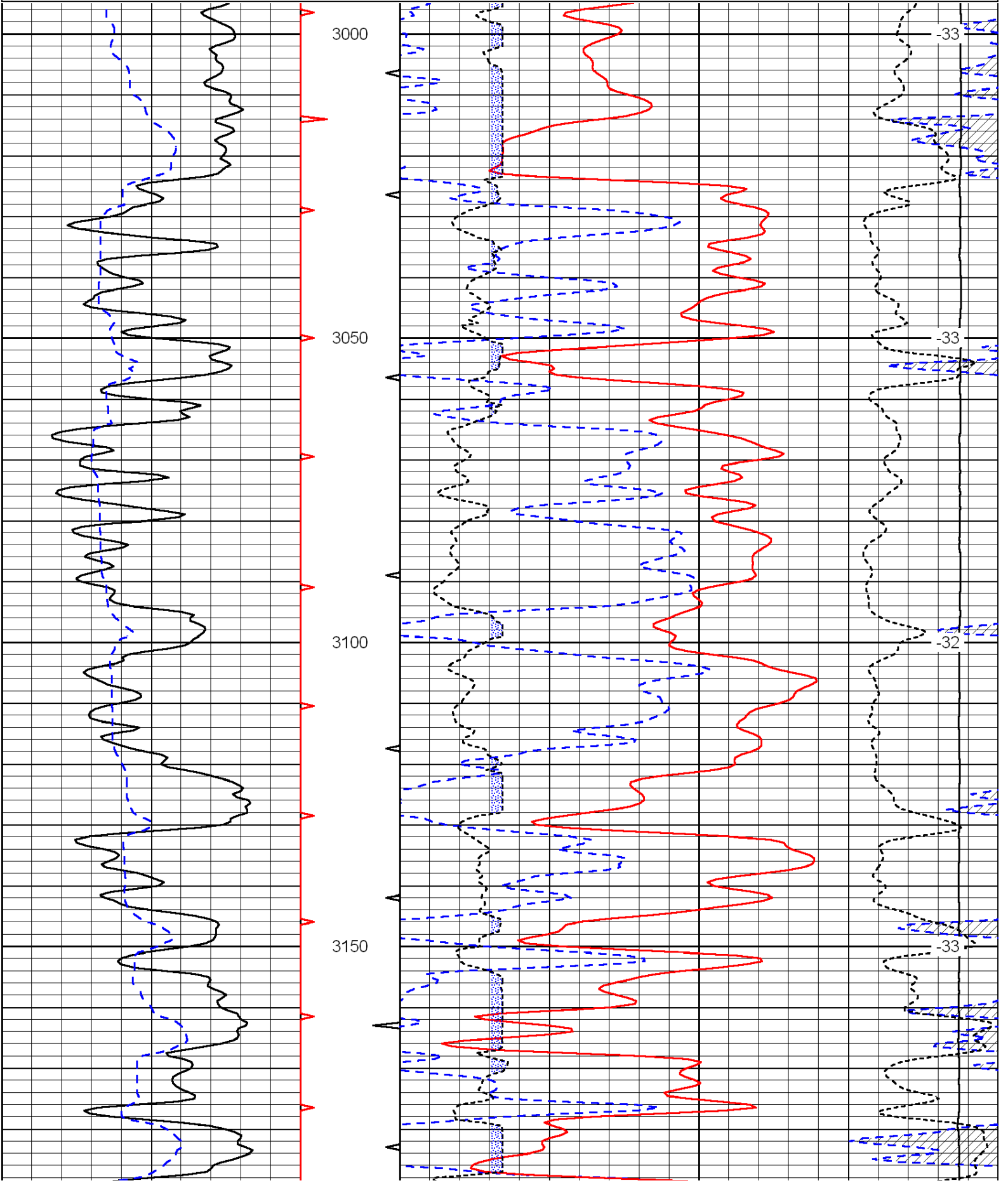


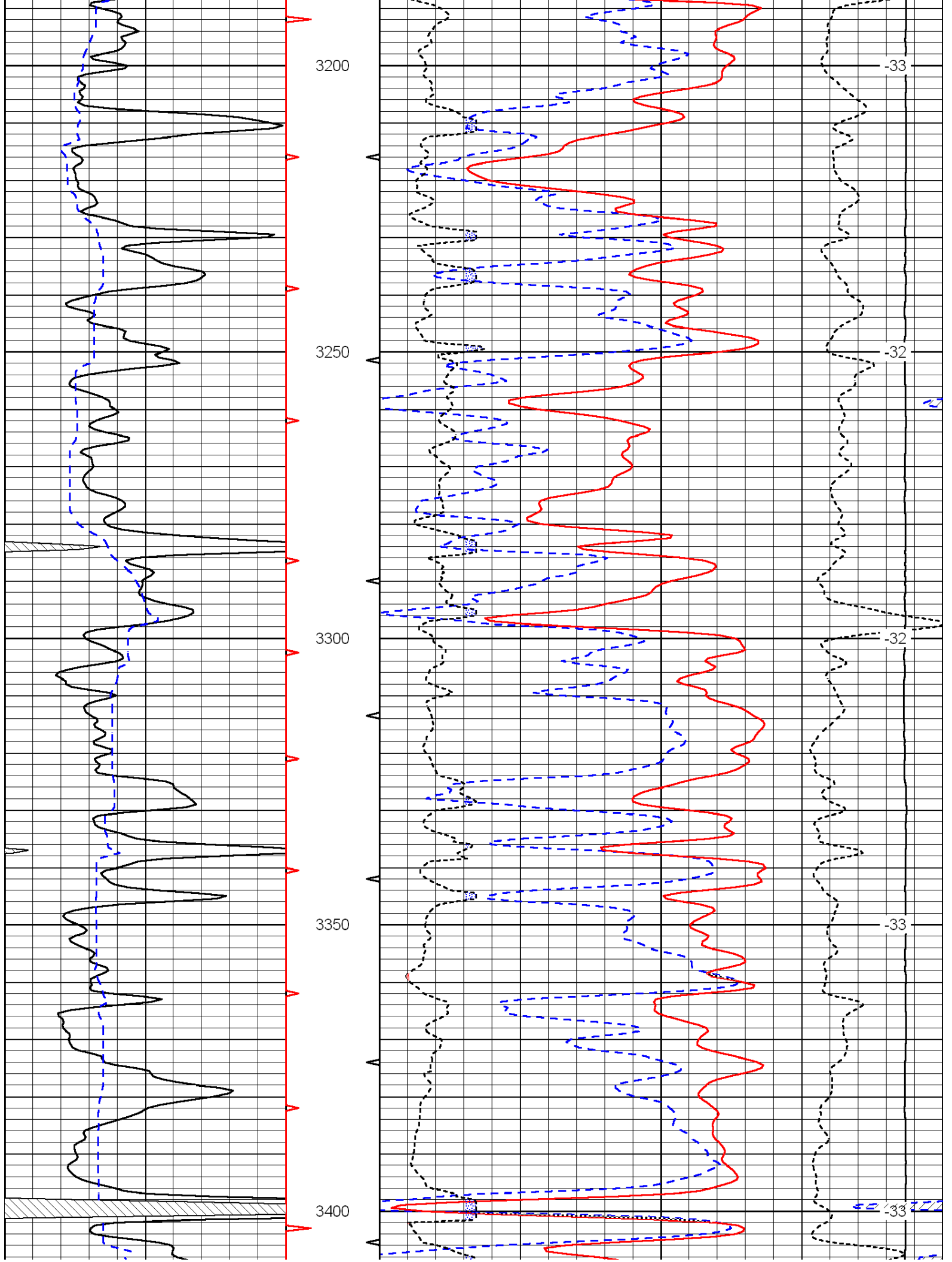
Database File: c:\warrior\data\pelican hill\_nelson no. 1-8\pelicanhill\_nelson\_1-8hd.db  
 Dataset Pathname: dil/pelstock  
 Presentation Format: cndlspec  
 Dataset Creation: Tue Apr 19 00:42:46 2011  
 Charted by: Depth in Feet scaled 1:240

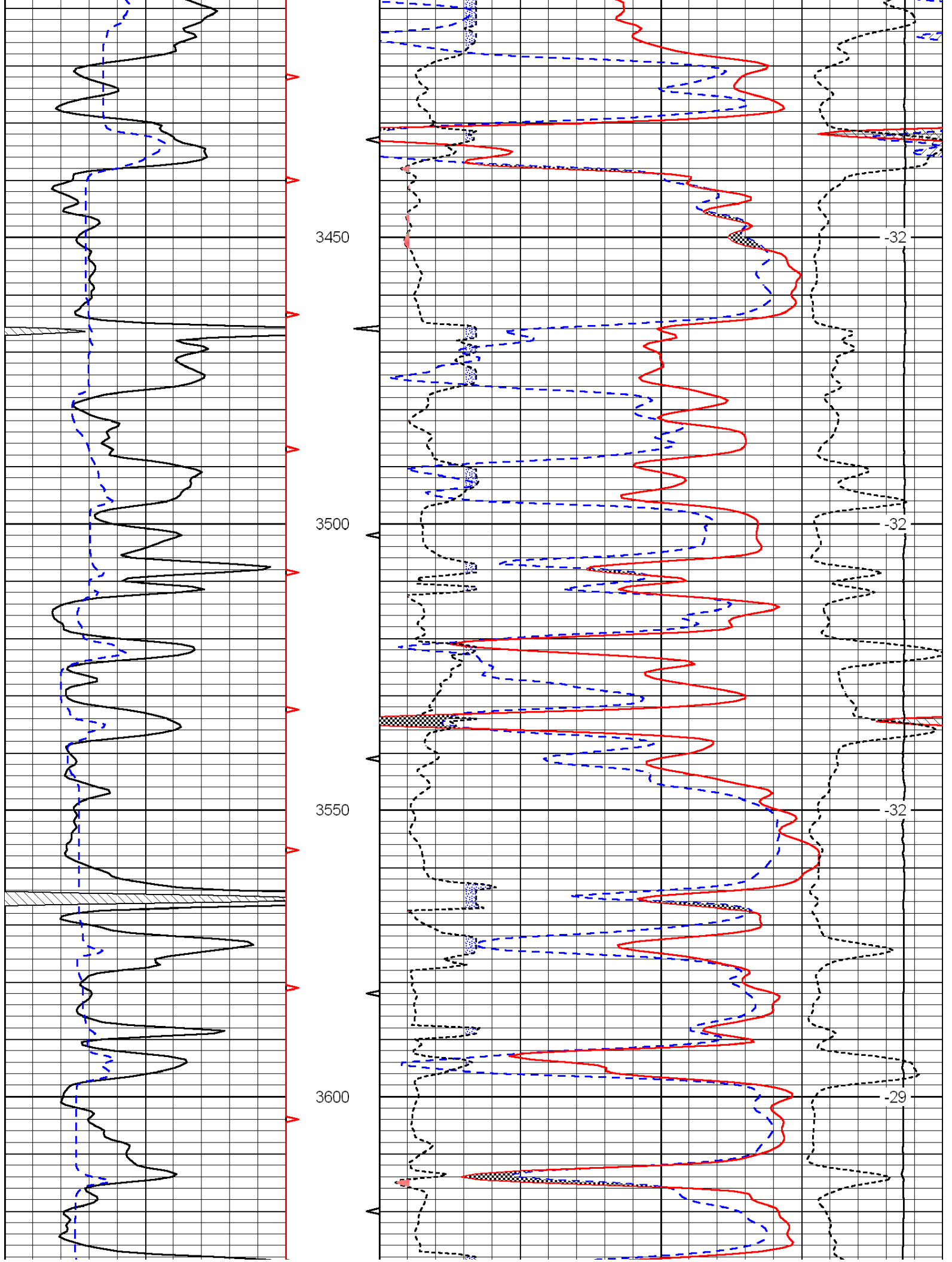
0	Gamma Ray	150
6	Caliper (GAPI)	16

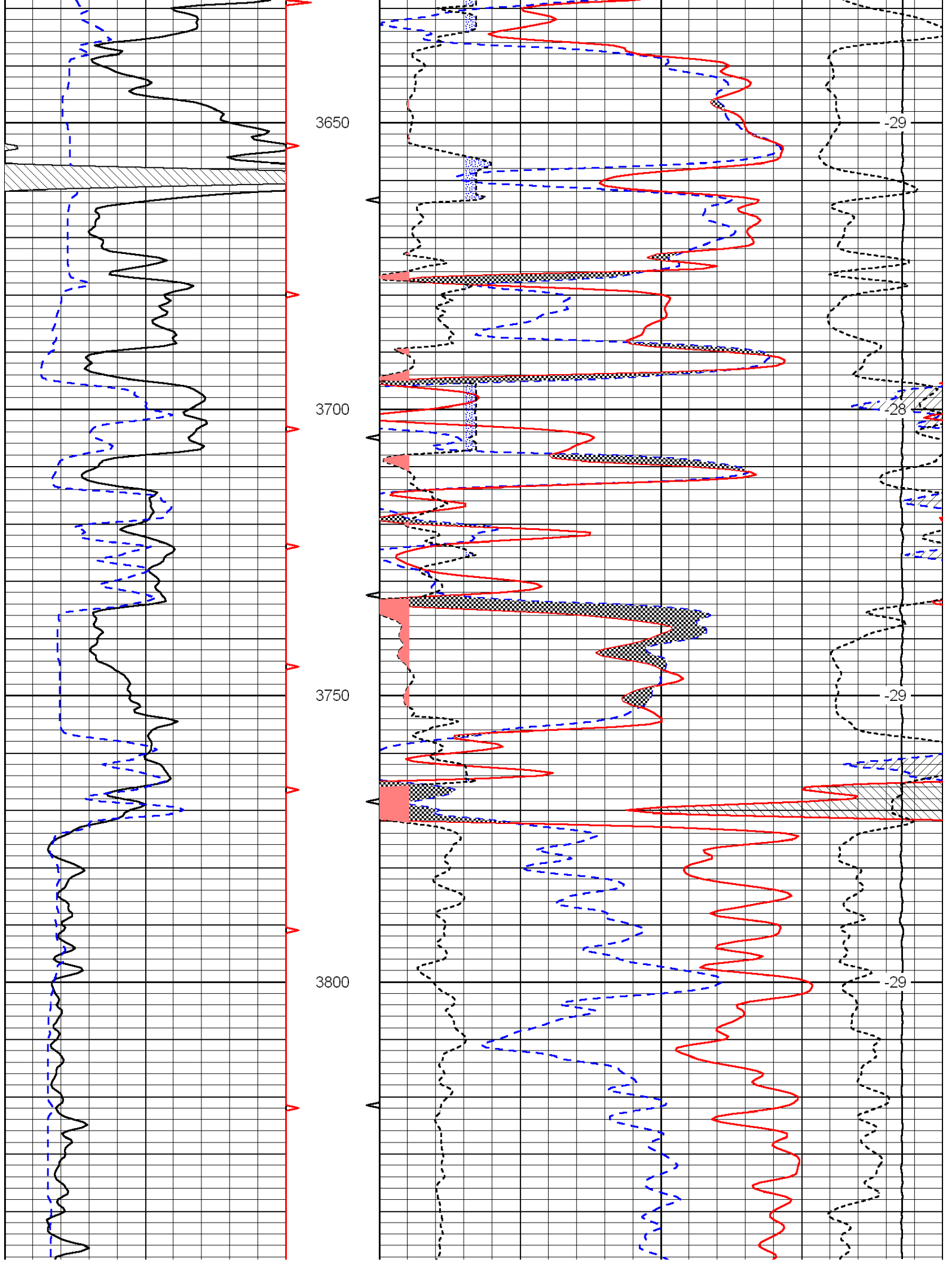
30	Compensated Neutron (Limestone)			-10	
30	Compensated Density (Limestone)			-10	
2.625	DGA	3.425	-0.25	Correction	0.25
15000	Line Tension			0	

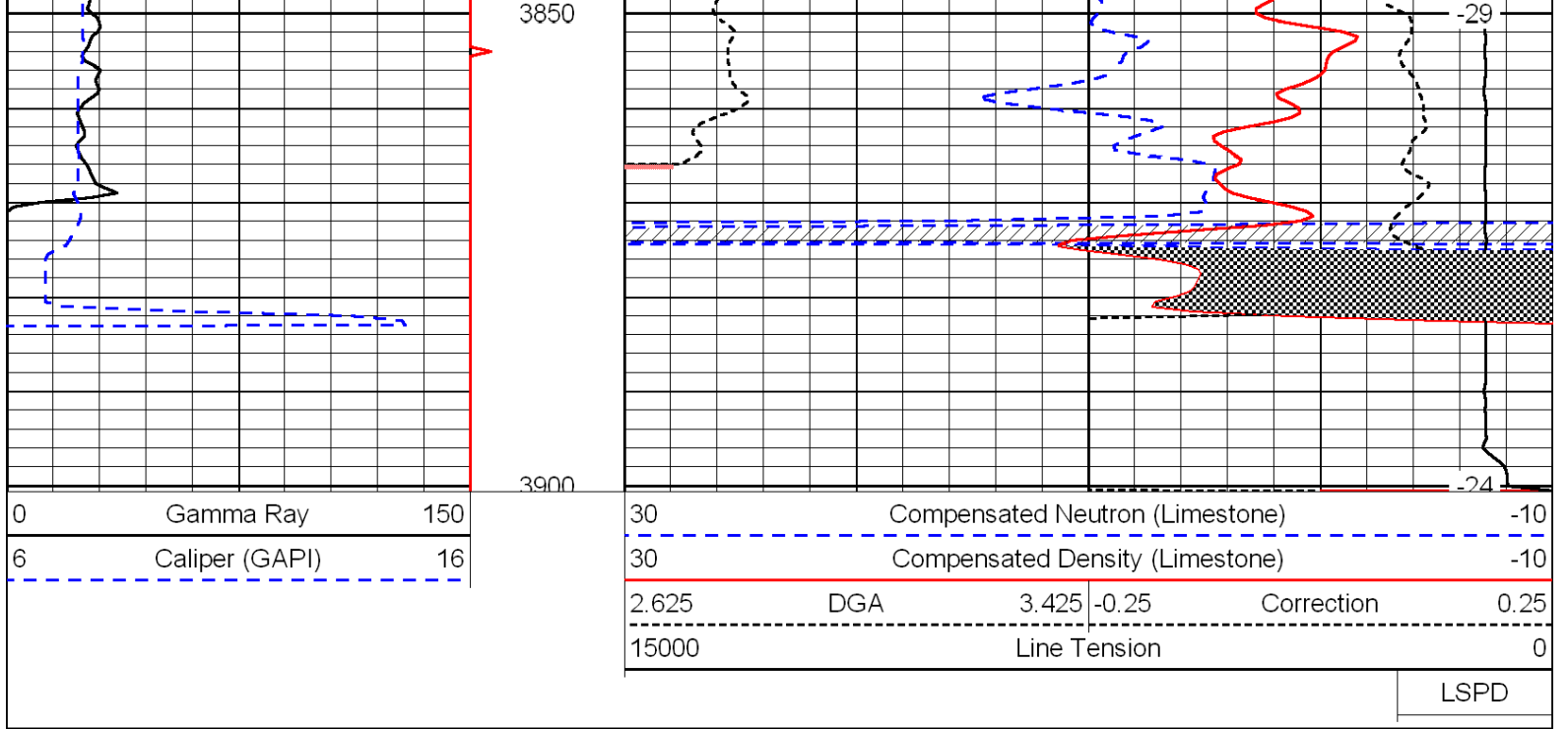
LSPD







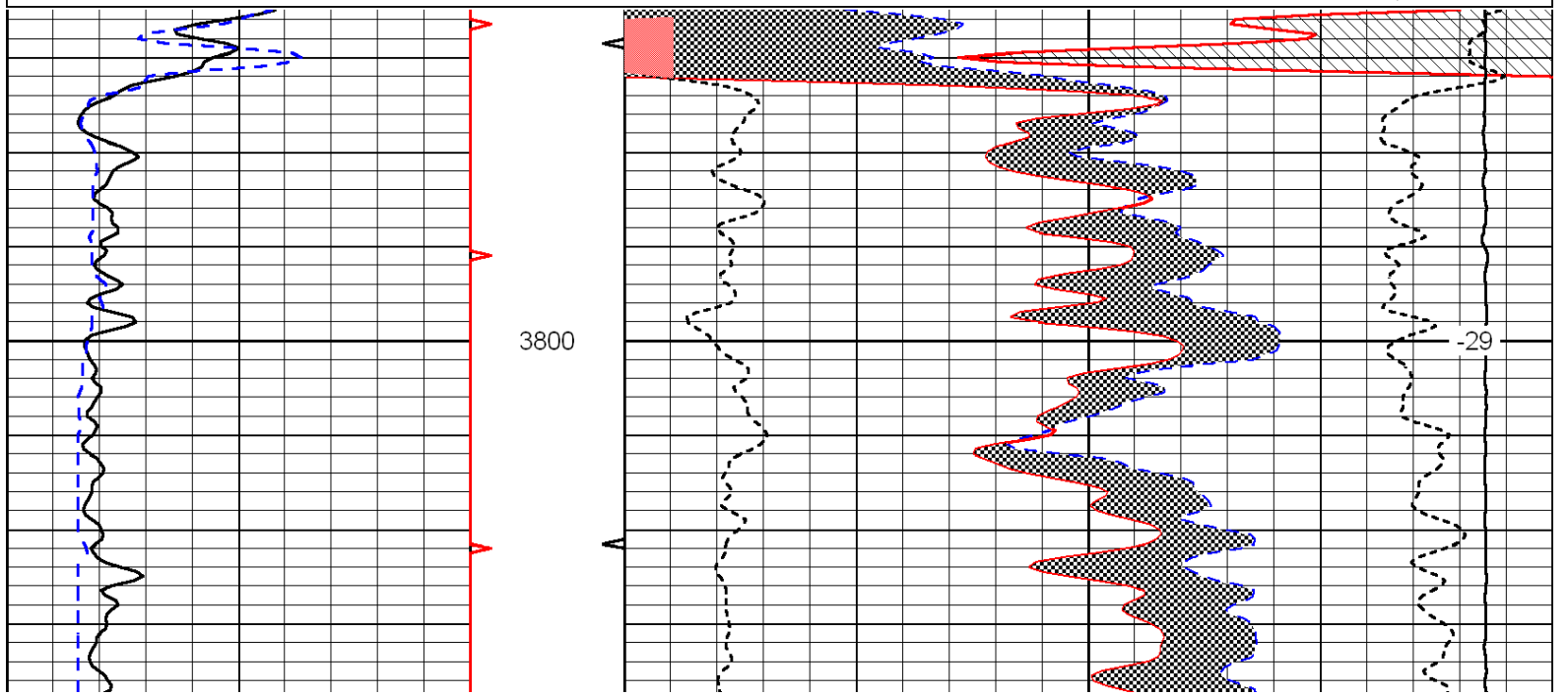
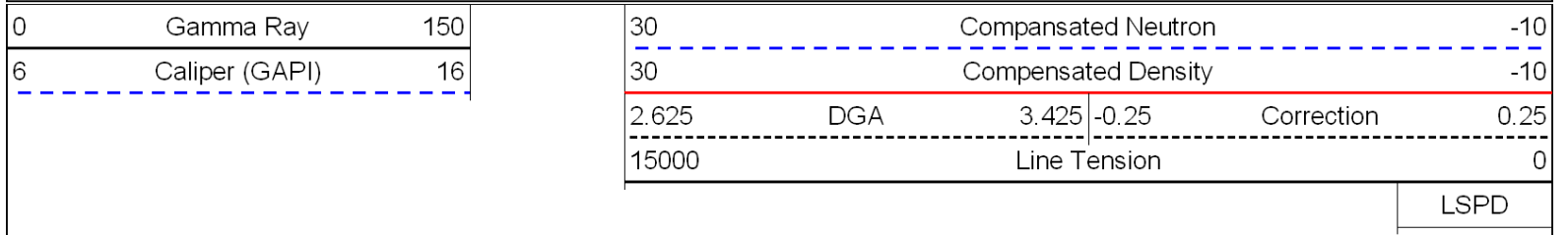


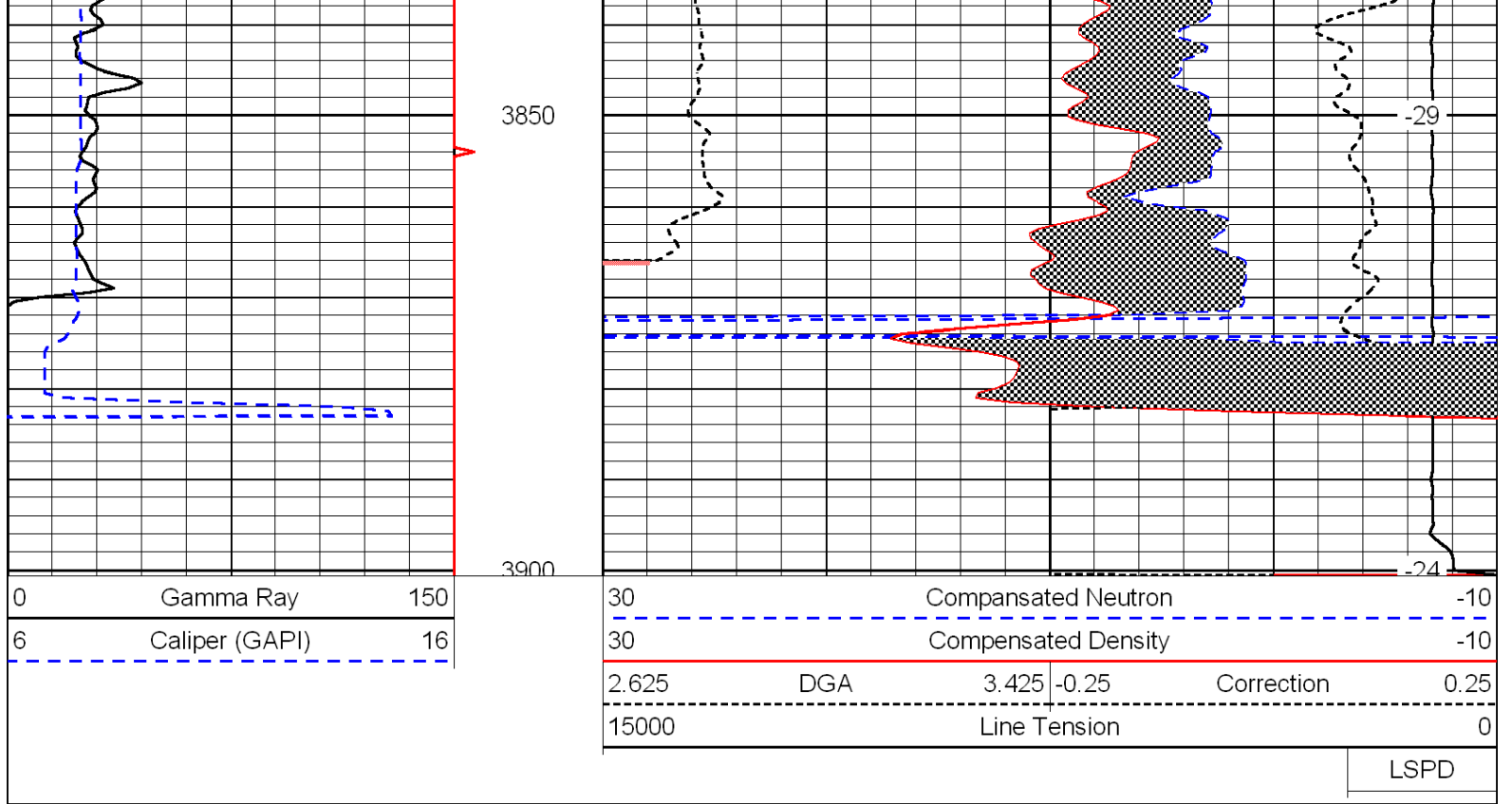


**LOG-TECH**

# Dolomite Matrix (2.83)

Database File: c:\warrior\data\pelican hill\_nelson no. 1-8\pelicanhill\_nelson\_1-8hd.db  
 Dataset Pathname: dil/peldolo  
 Presentation Format: cndldolo  
 Dataset Creation: Tue Apr 19 00:42:45 2011  
 Charted by: Depth in Feet scaled 1:240





LSPD