



**DIGITAL LOG** (785) 625-3858

**Microresistivity  
Log**

API No.	15-195-22,705-00-00		
Company	Pelican Hill Oil & Gas Inc.		
Well	Nelson No. 1-8		
Field	Wildcat		
County	Trego	State	Kansas
Location	SW SE NE NE		
Sec: 8	Twp: 11S	Rge: 21W	Elevation 2138
Permanent Datum	Ground Level	Log Measured From	Kelly Bushing
Drilling Measured From	Kelly Bushing	8	Ft. Above Perm. Datum
			Elevation 2146
			D.F. 2138
			G.L. 2138

Date	4/18/2011
Run Number	Two
Depth Driller	3895
Depth Logger	3896
Bottom Logged Interval	3895
Top Log Interval	3000
Casing Driller	8.625 @ 268
Casing Logger	265
Bit Size	7.875
Type Fluid in Hole	Chemical
Salinity, ppm CL	4000
Density / Viscosity	9.4   50
pH / Fluid Loss	10.0   7.2
Source of Sample	Flowline
Rm @ Meas. Temp	.74 @ 55
Rmf @ Meas. Temp	.56 @ 55
Rmc @ Meas. Temp	1.00 @ 55
Source of Rmf / Rmc	Charts
Rm @ BHT	.35 @ 115
Operating Rig Time	4 1/2 Hours
Max Rec. Temp. F	115
Equipment Number	10
Location	Hays
Recorded By	J. Long
Witnessed By	Chris Bean

<<< Fold Here >>>

All interpretations are opinions based on inferences from electrical or other measurements and we cannot and do not guarantee the accuracy or correctness of any interpretation, and we shall not, except in the case of gross or willful negligence on our part, be liable or responsible for any loss, costs, damages, or expenses incurred or sustained by anyone resulting from any interpretation made by any of our officers, agents or employees. These interpretations are also subject to our general terms and conditions set out in our current Price Schedule.

**Comments**

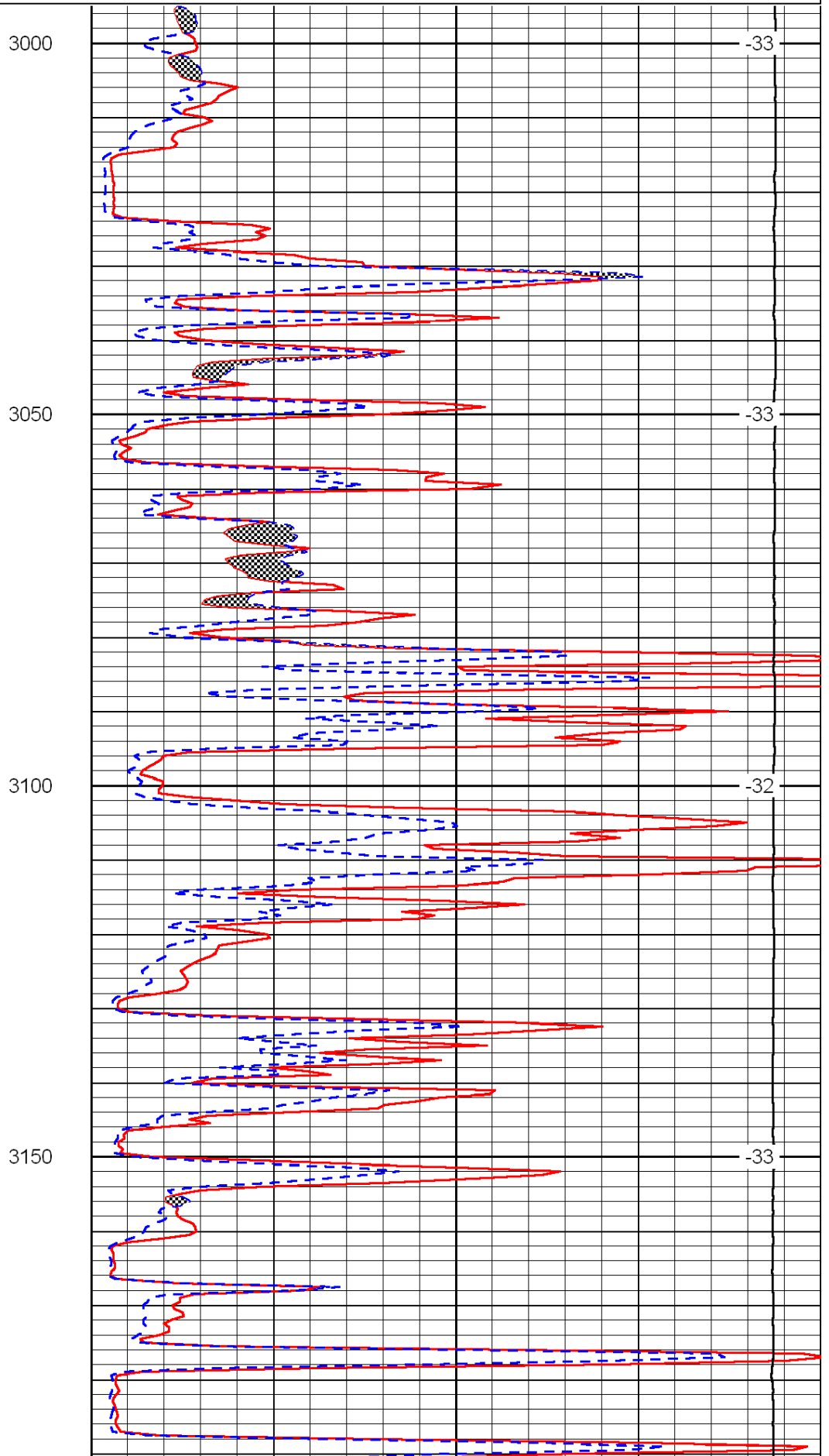
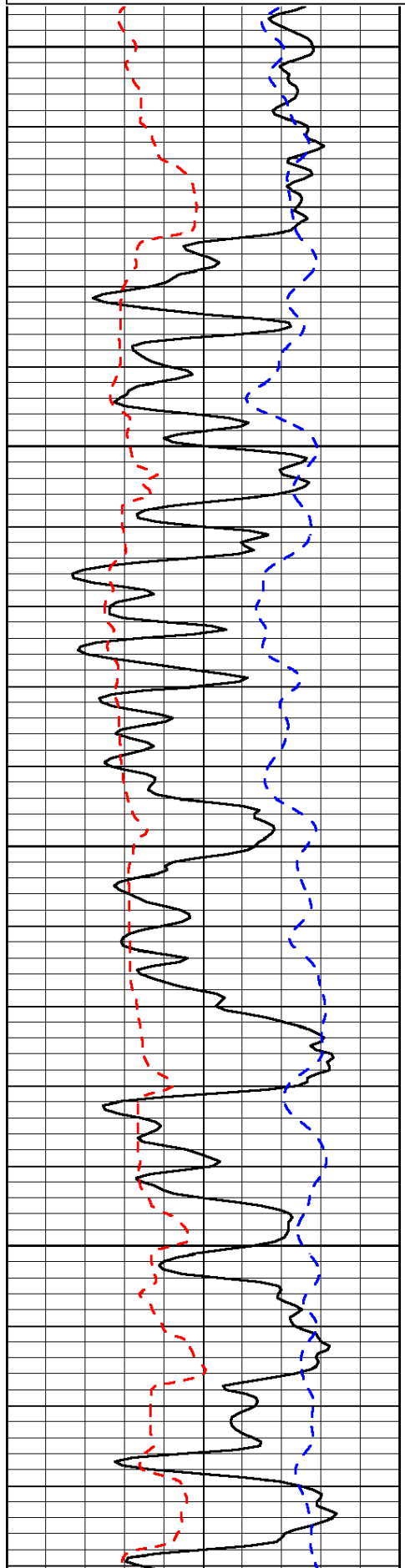
Thank you for using Log-Tech, Inc.  
(785) 625-3858

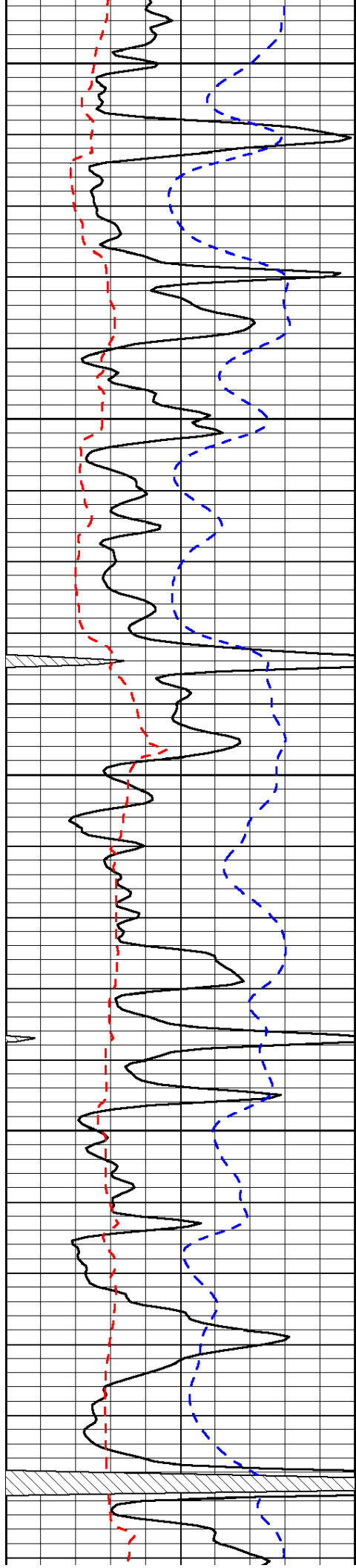
Riga, 11 North to A Rd, 2 West to 360 Avenue, 1 South, East 1/2, South and East Into

0	Gamma Ray	150
6	Micro Log Caliper (GAPI)	16
-200	SP (mV)	0

0	Micro Inverse 1 X 1	40
0	Micro Normal 2"	40
15000	Line Weight	0

LSPD





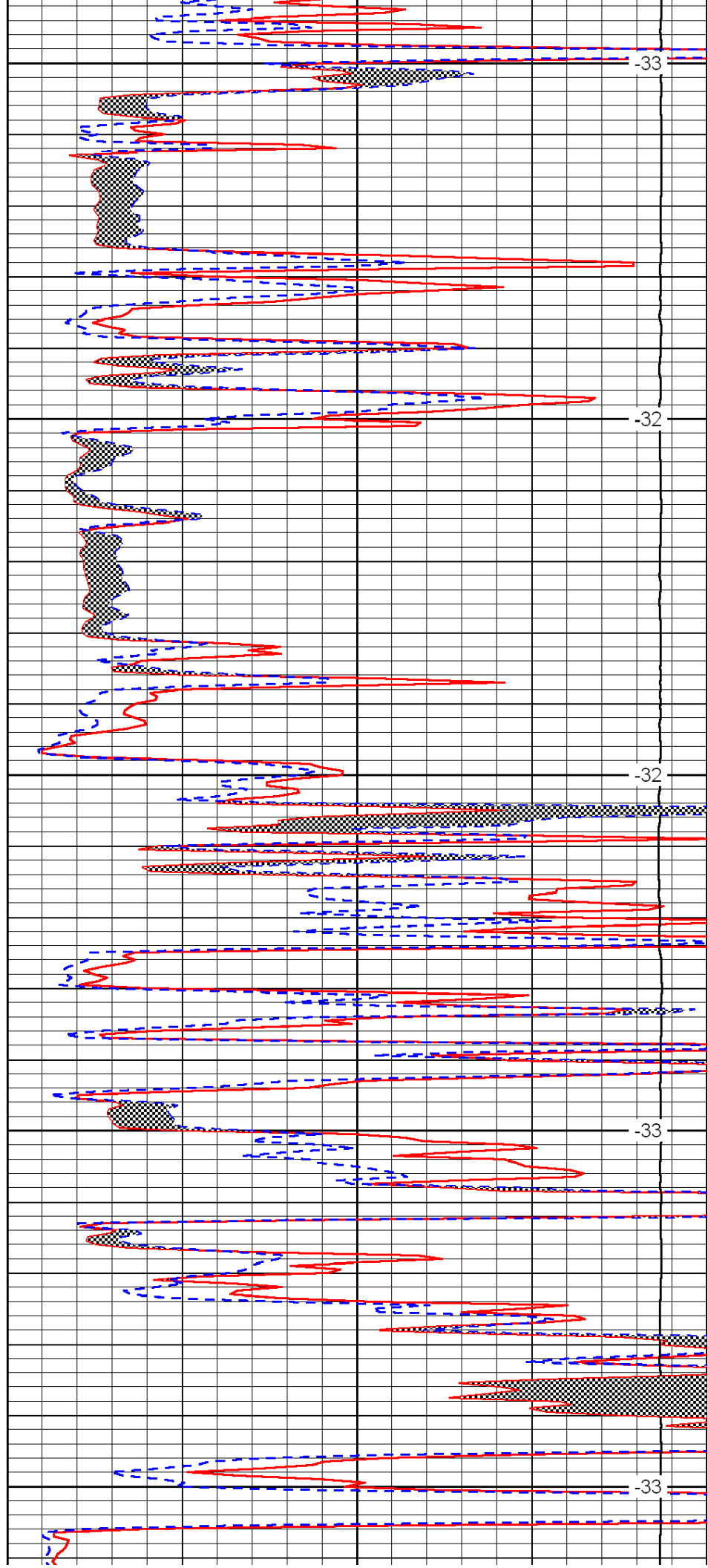
3200

3250

3300

3350

3400



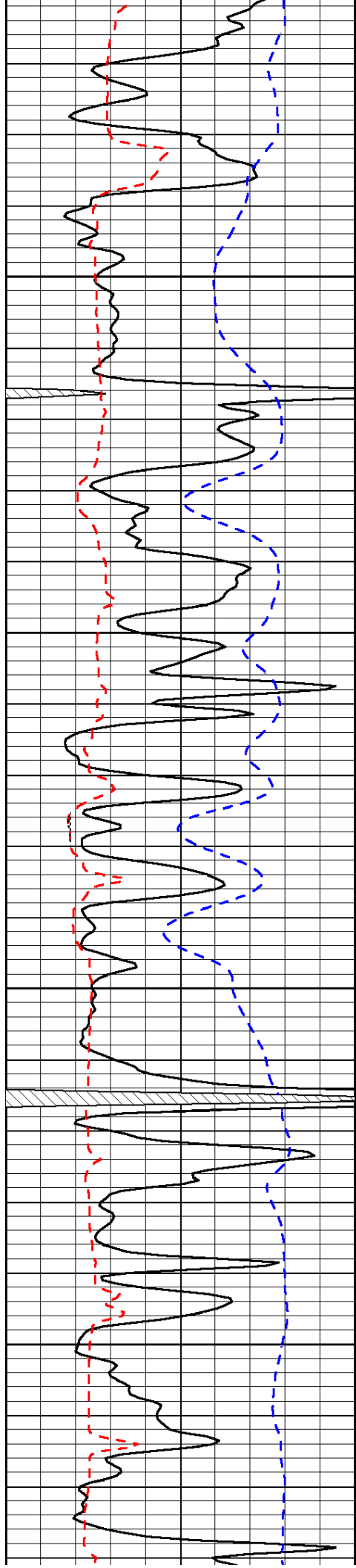
-33

-32

-32

-33

-33

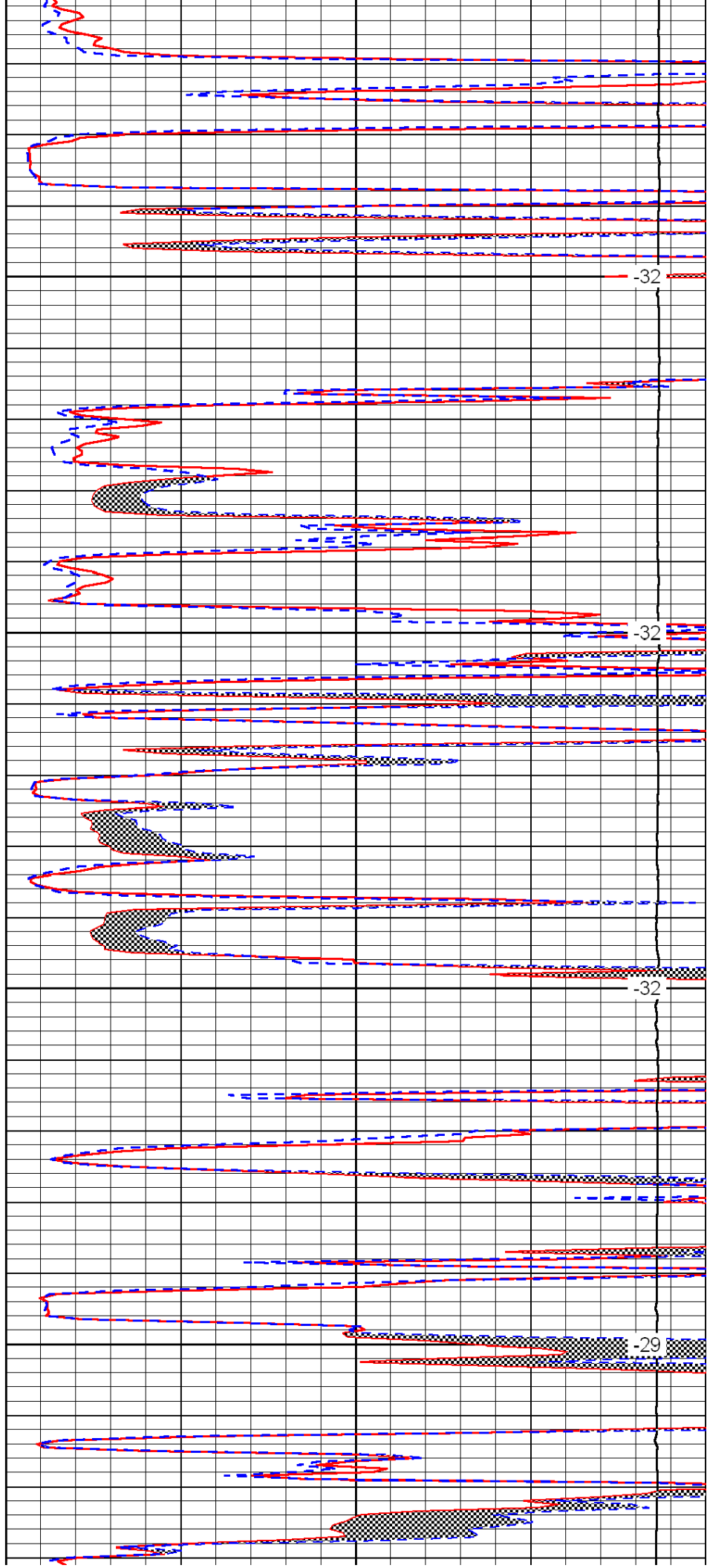


3450

3500

3550

3600

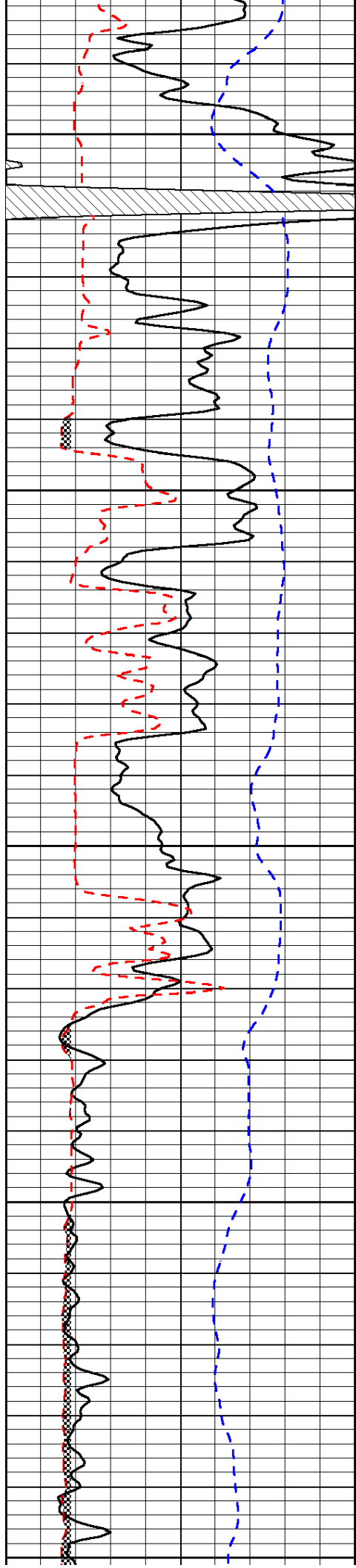


-32

-32

-32

-29



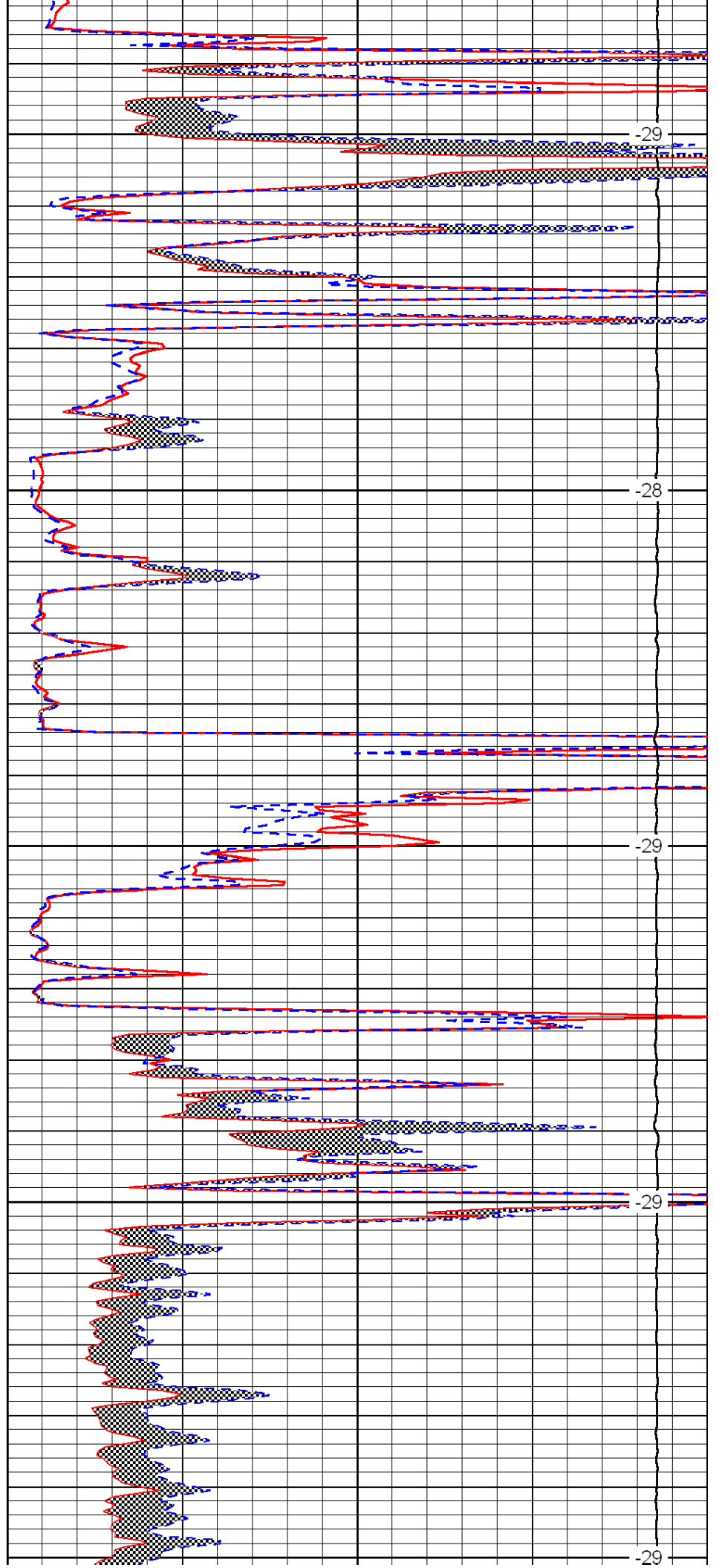
3650

3700

3750

3800

3850



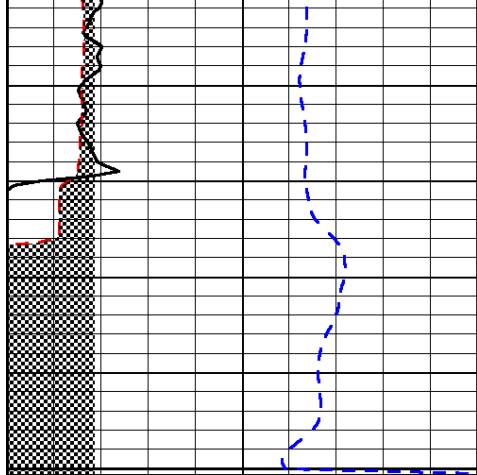
-29

-28

-29

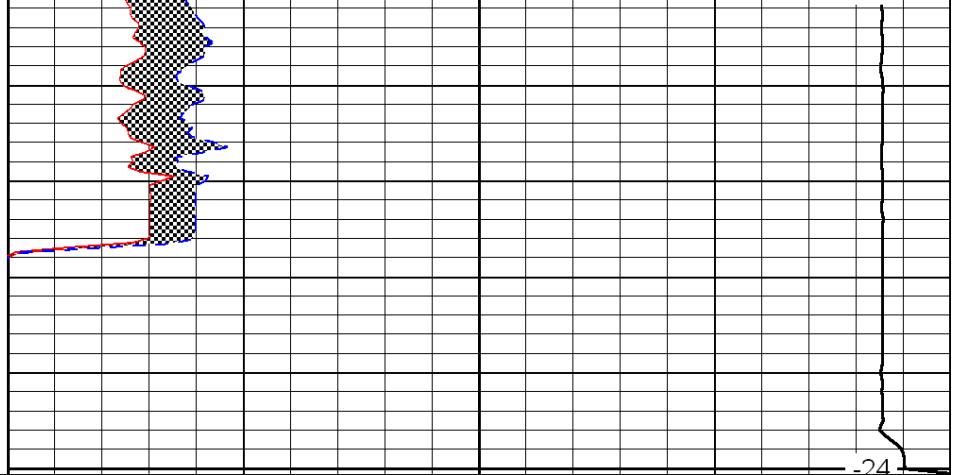
-29

-29



0	Gamma Ray	150
6	Micro Log Caliper (GAPI)	16
-200	SP (mV)	0

3900



0	Micro Inverse 1 X 1	40
0	Micro Normal 2''	40
15000	Line Weight	0

-24

LSPD