



DIGITAL LOG (785) 625-3858

Dual Induction Log

API No.	15-195-22,705-00-00	
Company	Pelican Hill Oil & Gas Inc.	
Well	Nelson No. 1-8	
Field	Wildcat	
County	Trego	State Kansas
Location	SW SE NE NE	
Sec: 8	Twp: 11S	Rge: 21W
Other Services	CNL/CDL MEL/BHCS	

Permanent Datum	Ground Level	Elevation 2138
Log Measured From	Kelly Bushing	8 Ft. Above Perm. Datum
Drilling Measured From	Kelly Bushing	
Date	4/18/2011	

Run Number	One
Depth Driller	3895
Depth Logger	3896
Bottom Logged Interval	3895
Top Log Interval	250
Casing Driller	8.625 @ 268
Casing Logger	265
Bit Size	7.875
Type Fluid in Hole	Chemical
Salinity, ppm CL	4000
Density / Viscosity	9.4 50
pH / Fluid Loss	10.0 7.2
Source of Sample	Flowline
Rm @ Meas. Temp	.74 @ 55
Rmf @ Meas. Temp	.56 @ 55
Rmc @ Meas. Temp	1.00 @ 55
Source of Rmf / Rmc	Charts
Rm @ BHT	.35 @ 115
Operating Rig Time	4 1/2 Hours
Max Rec. Temp. F	115
Equipment Number	10
Location	Hays
Recorded By	J. Long
Witnessed By	Chris Bean

<<< Fold Here >>>

All interpretations are opinions based on inferences from electrical or other measurements and we cannot and do not guarantee the accuracy or correctness of any interpretation, and we shall not, except in the case of gross or willful negligence on our part, be liable or responsible for any loss, costs, damages, or expenses incurred or sustained by anyone resulting from any interpretation made by any of our officers, agents or employees. These interpretations are also subject to our general terms and conditions set out in our current Price Schedule.

Comments

Thank you for using Log-Tech, Inc.
(785) 625-3858

Riga, 11 North to A Rd, 2 West to 360 Avenue, 1 South, East 1/2, South and East Into

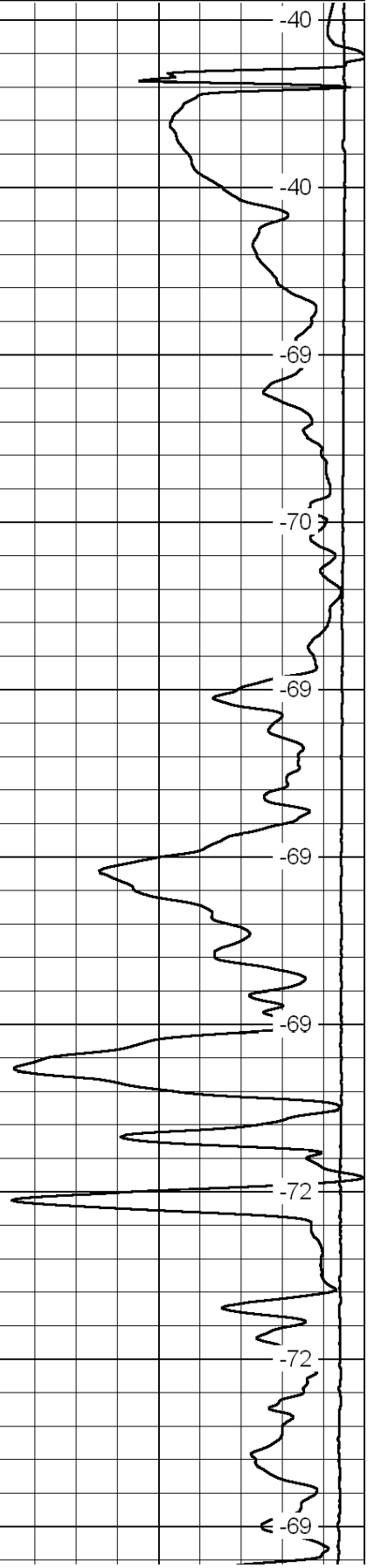
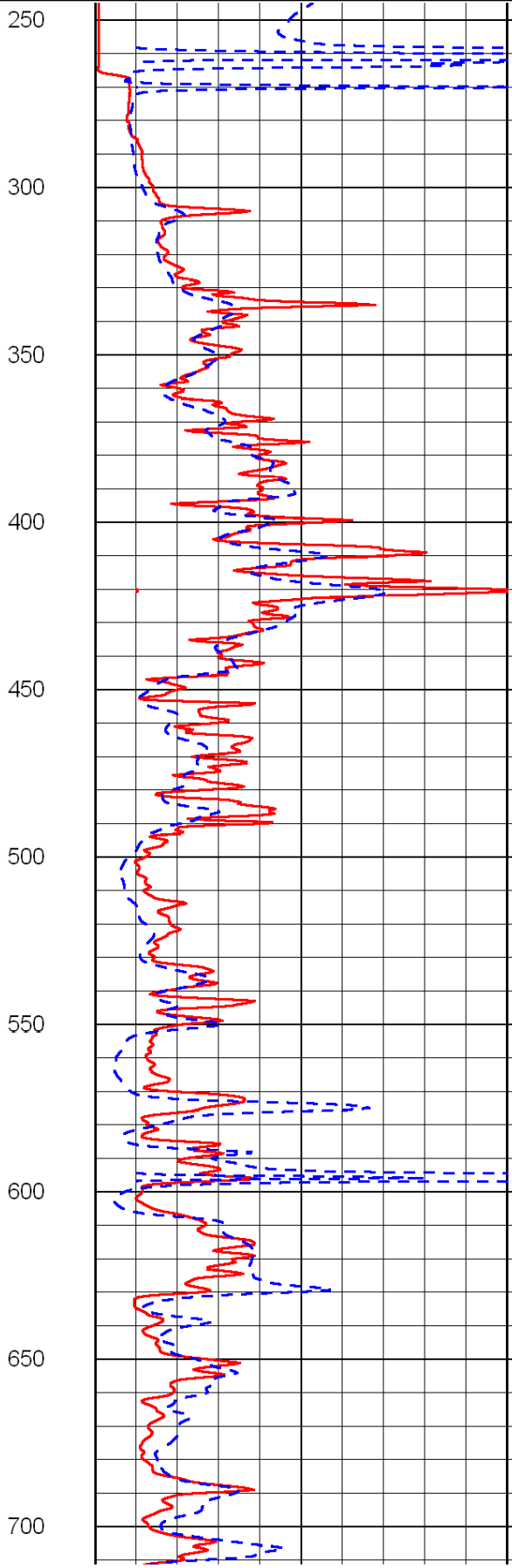
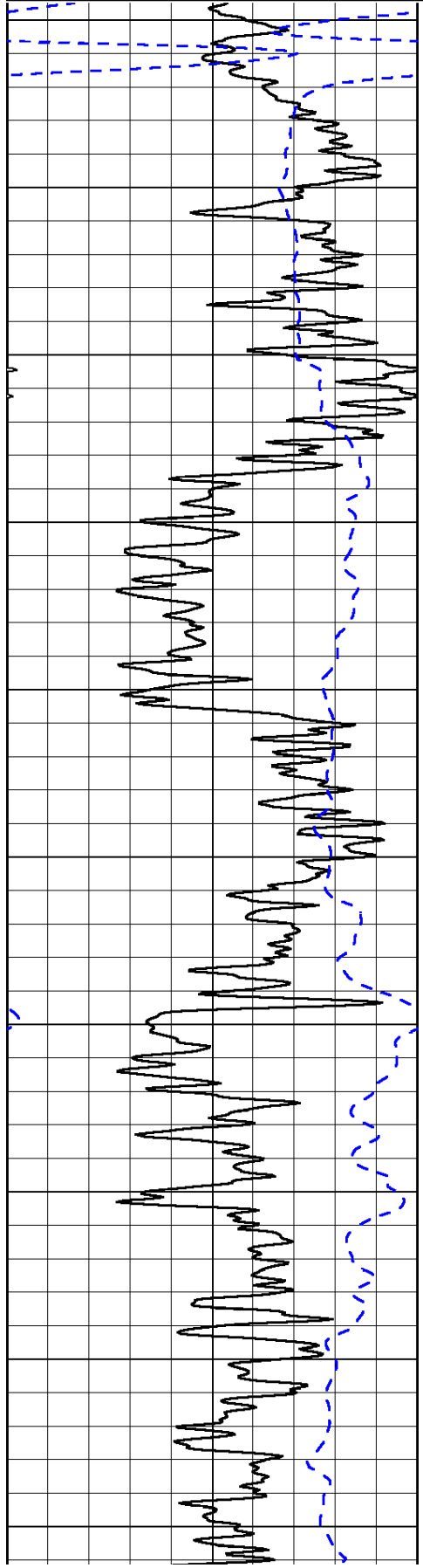
0	Gamma Ray	150
-200	SP (mV)	0

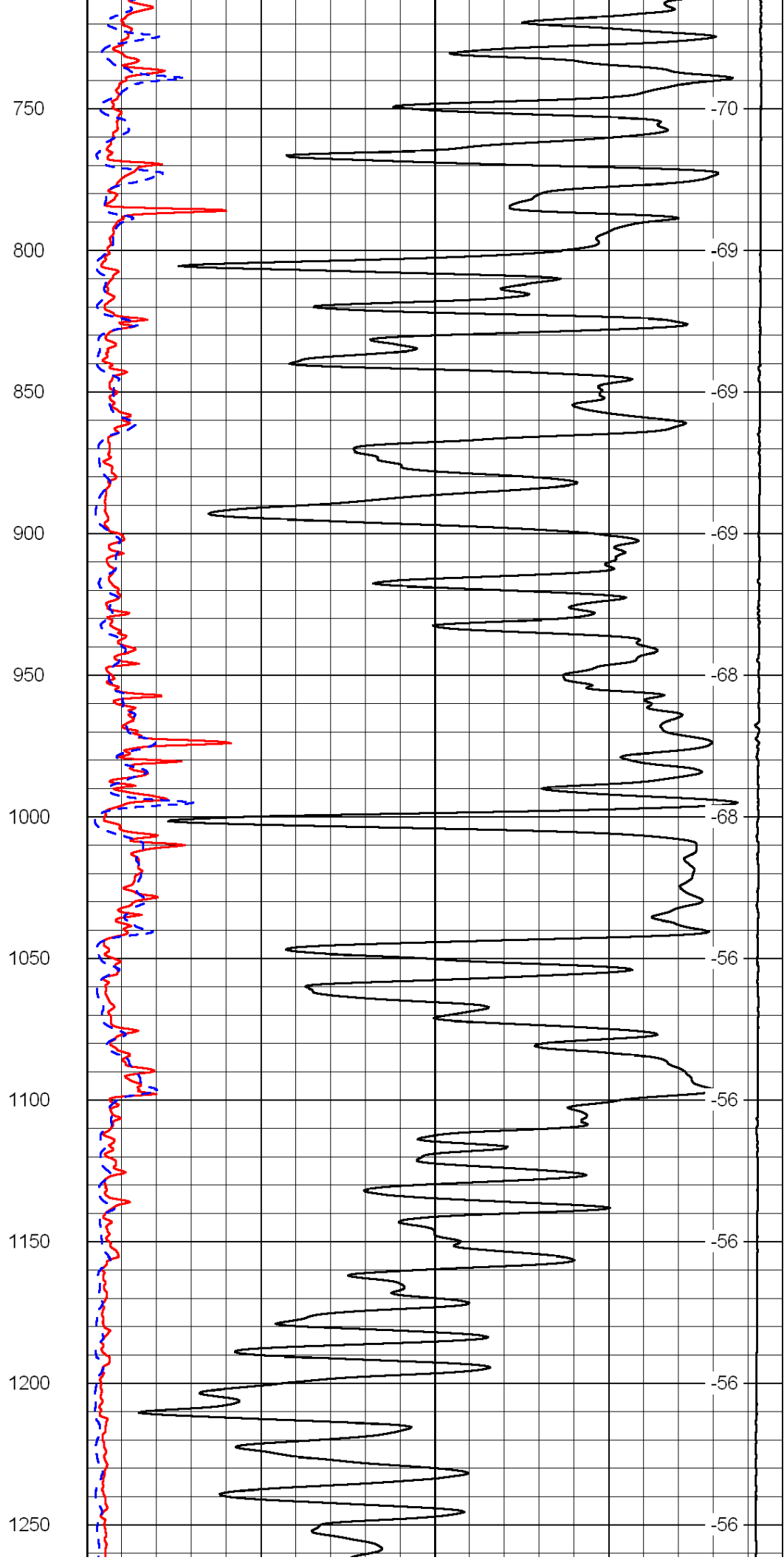
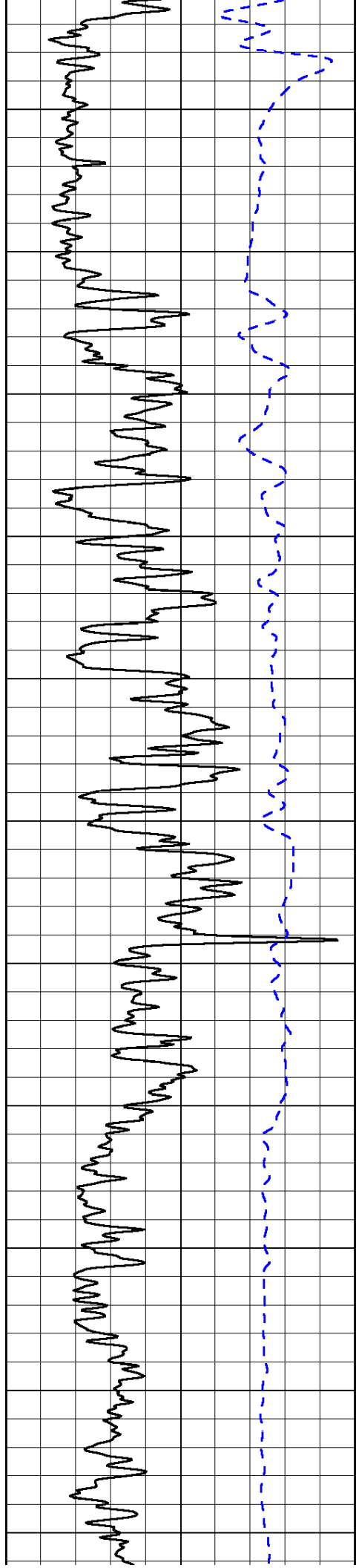
0	Shallow Resistivity	50
0	Deep Resistivity	50

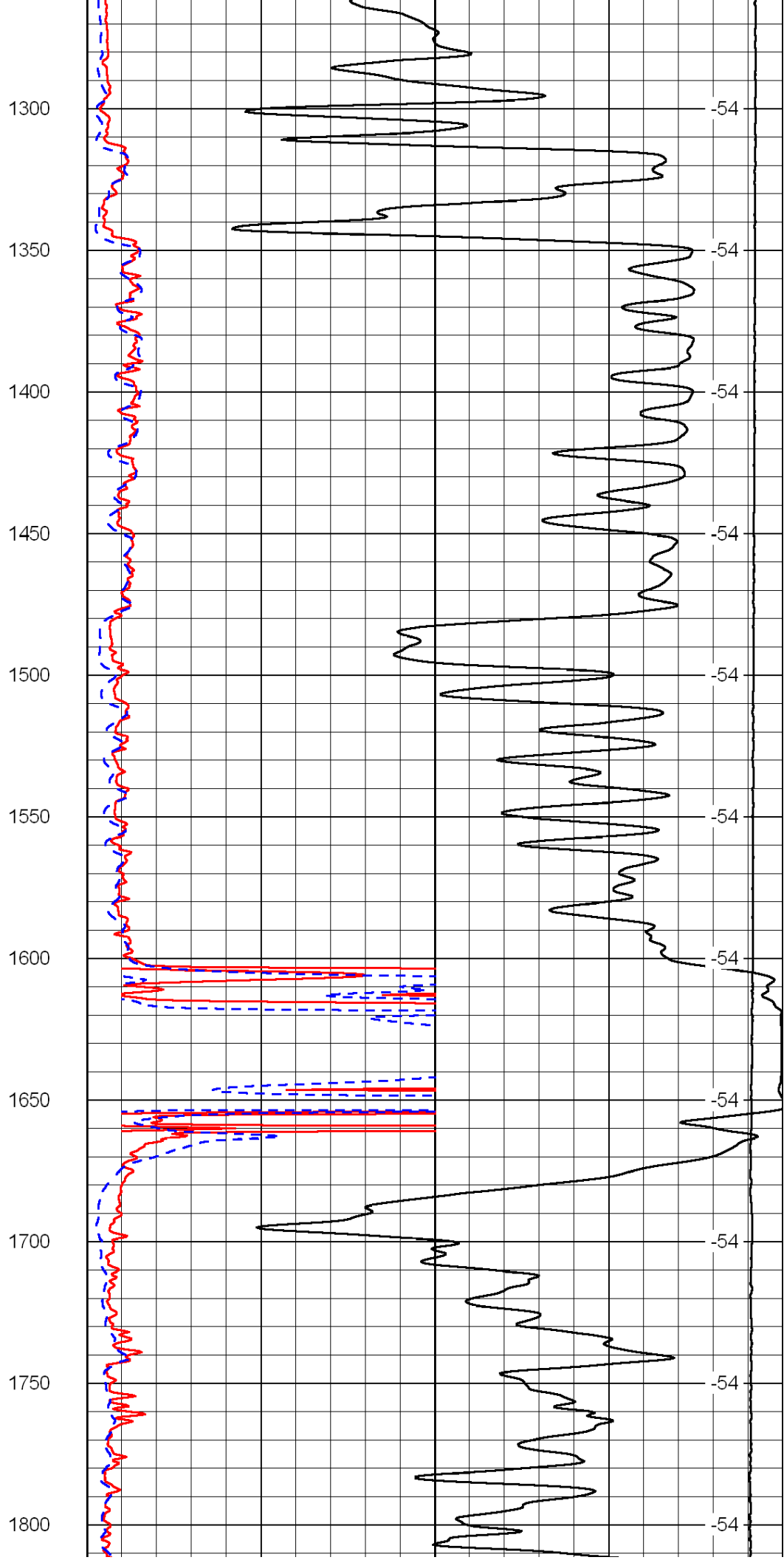
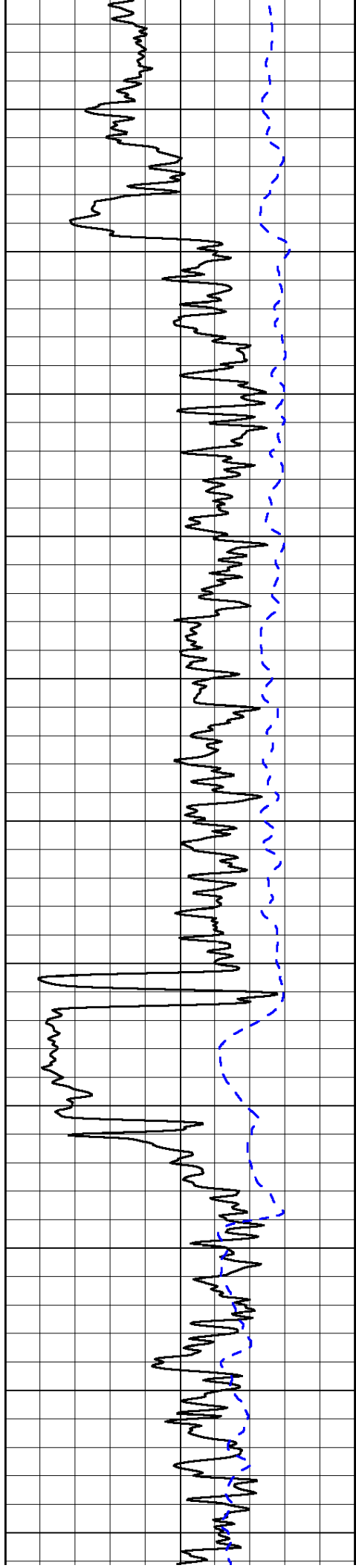
LSPD

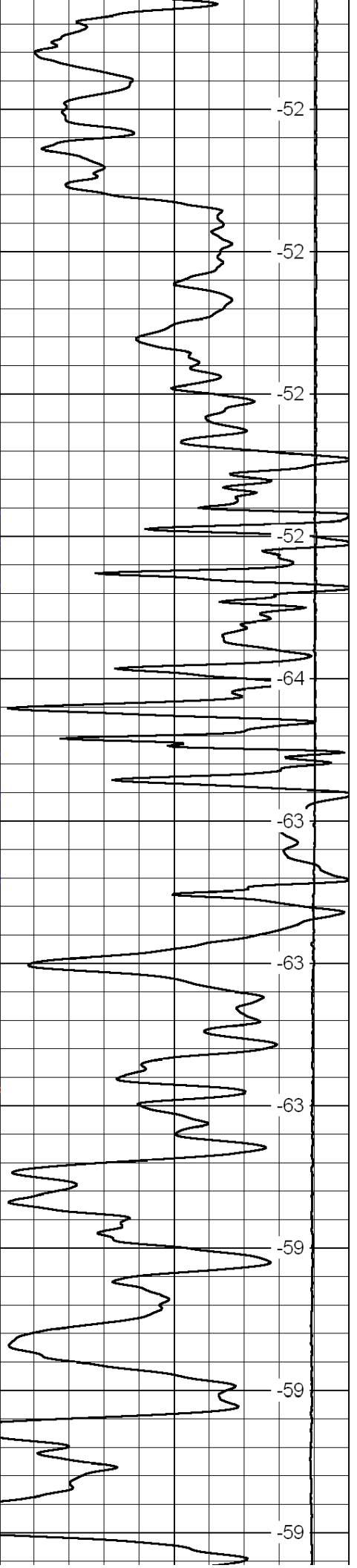
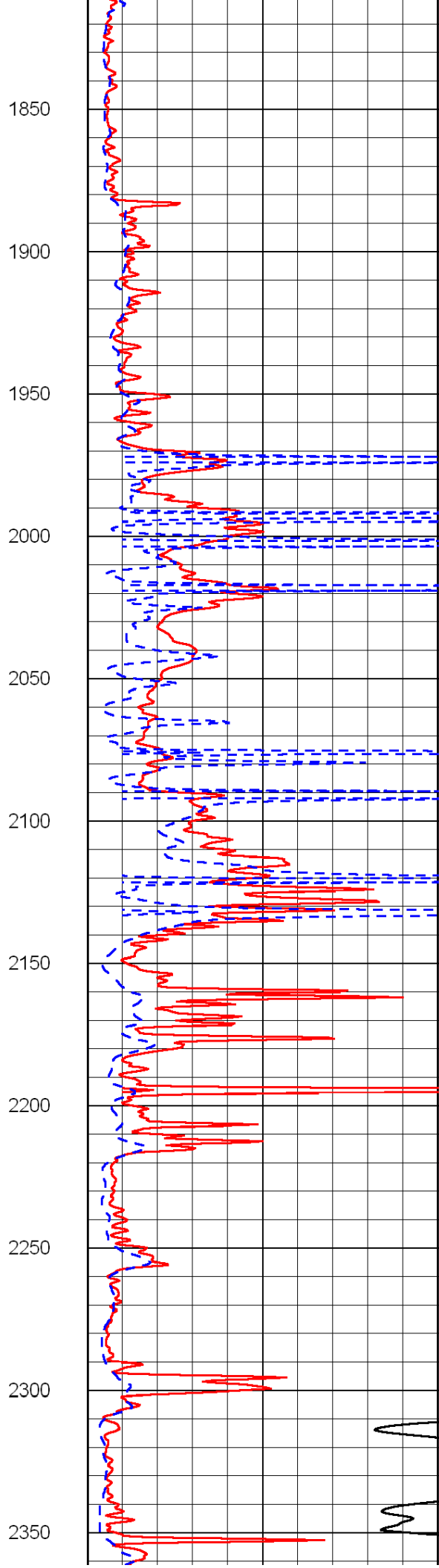
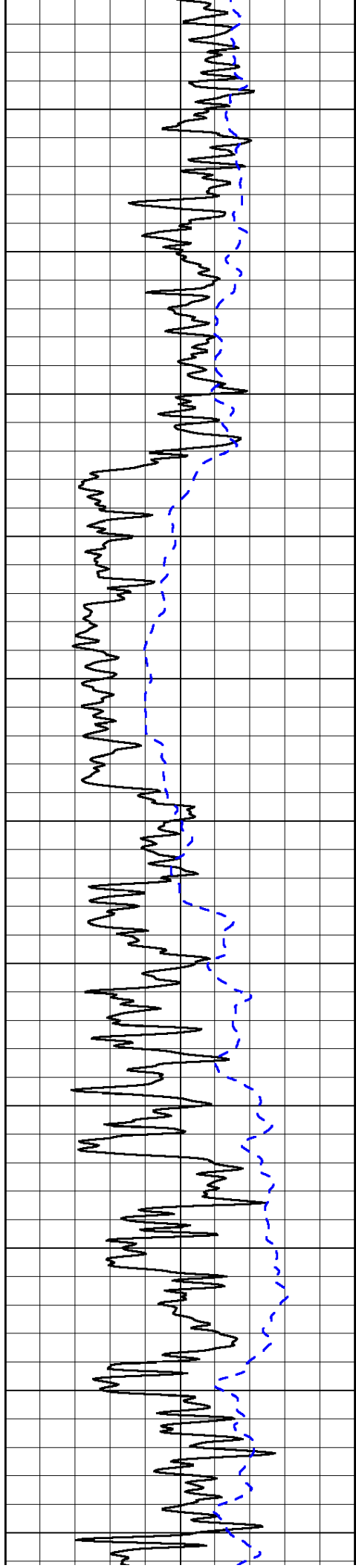
1000	Conductivity	0
15000	Line Tension	0

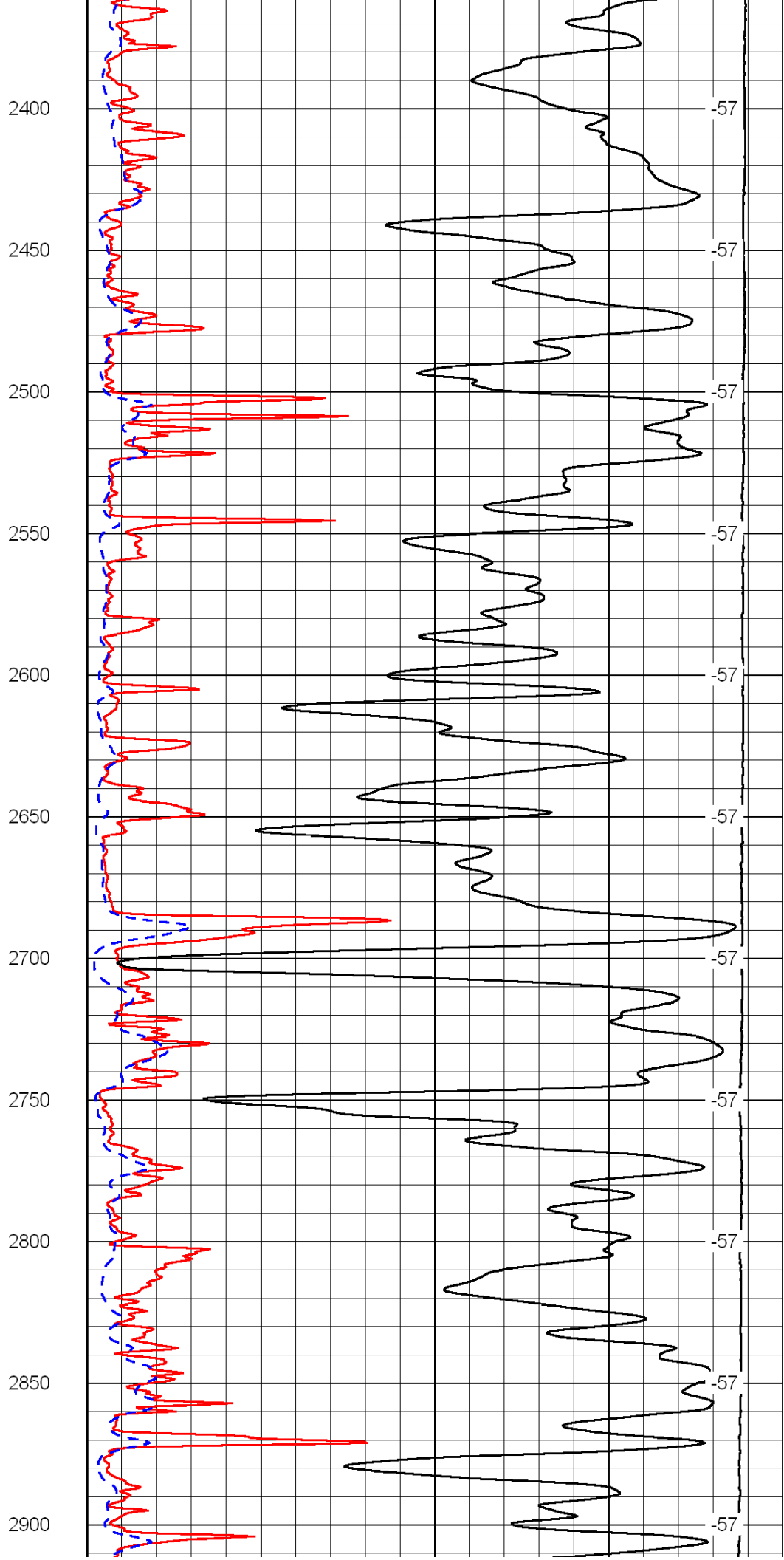
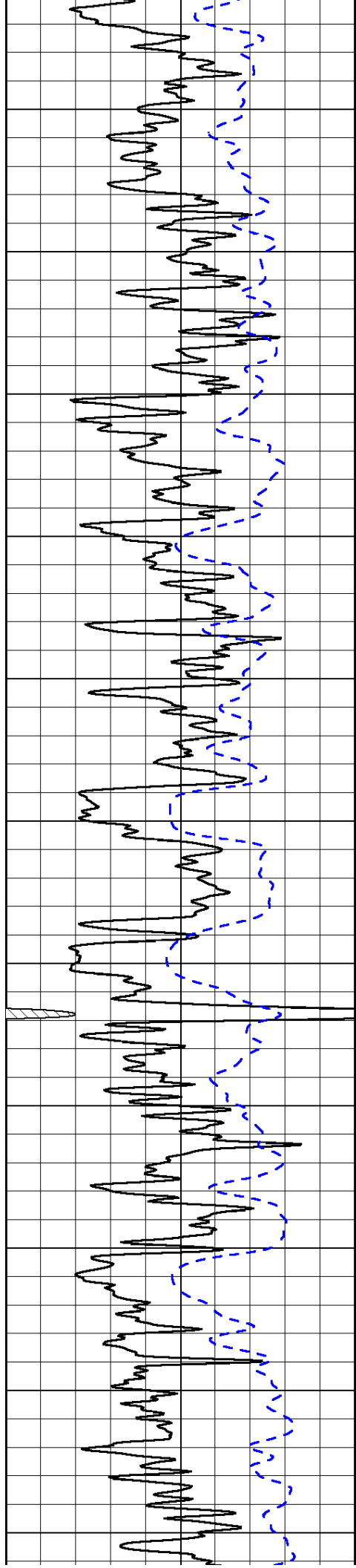
50	Shallow Resistivity	500
50	Deep Resistivity	500

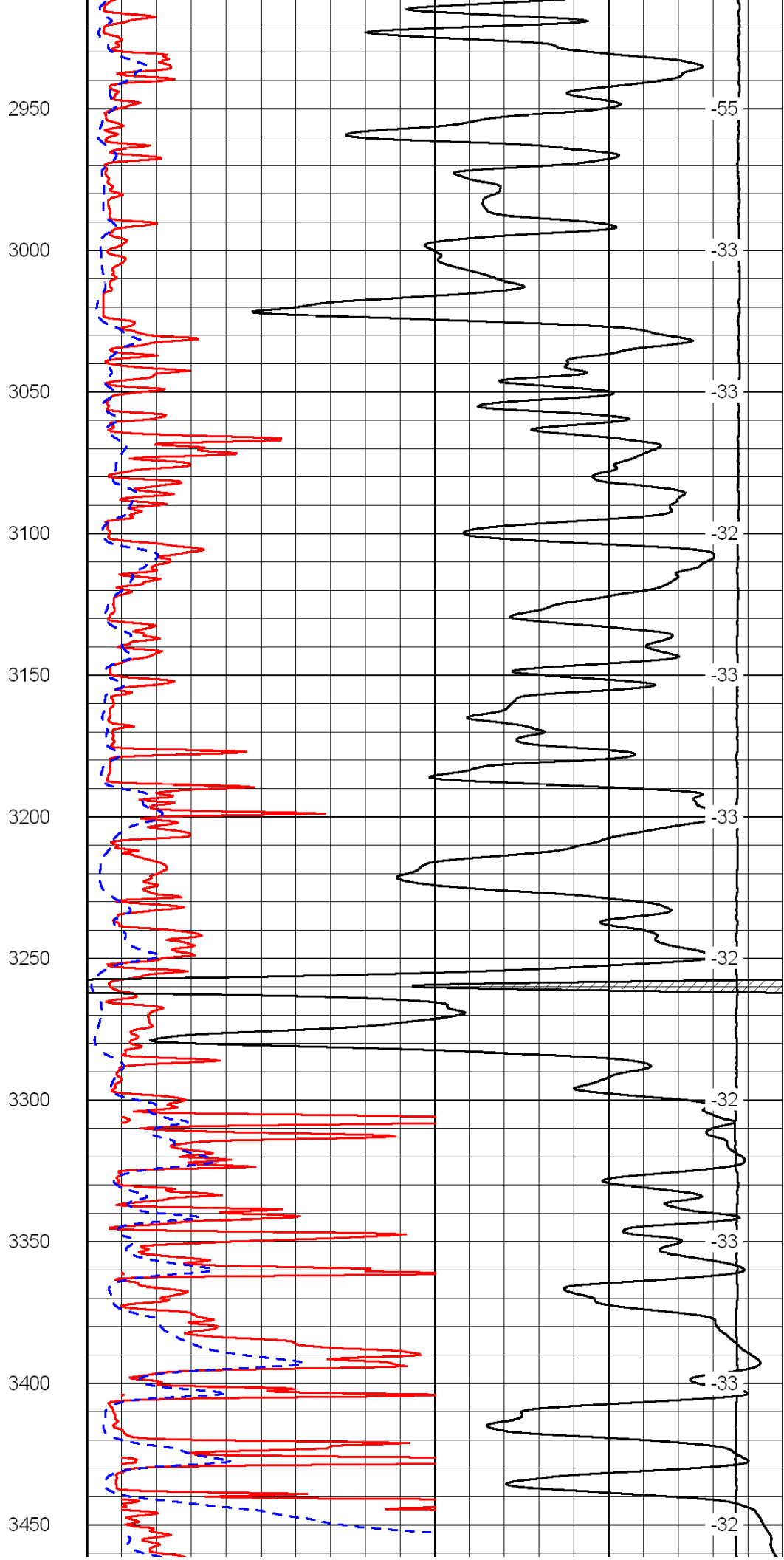
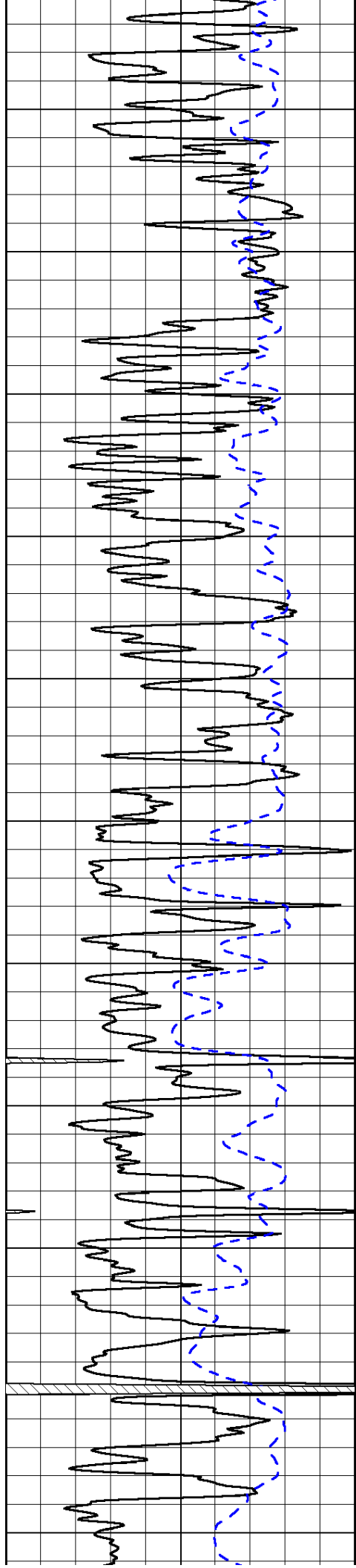


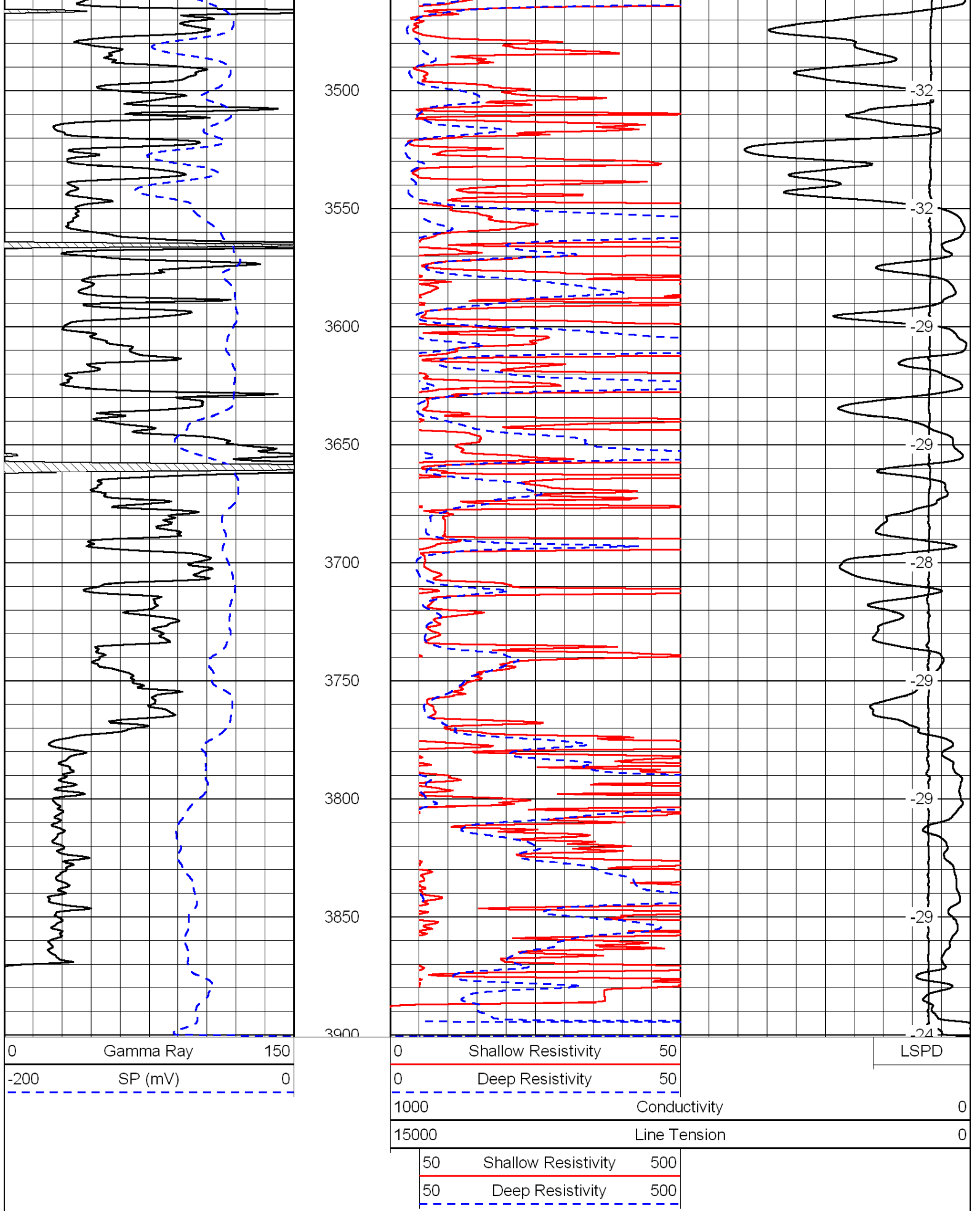








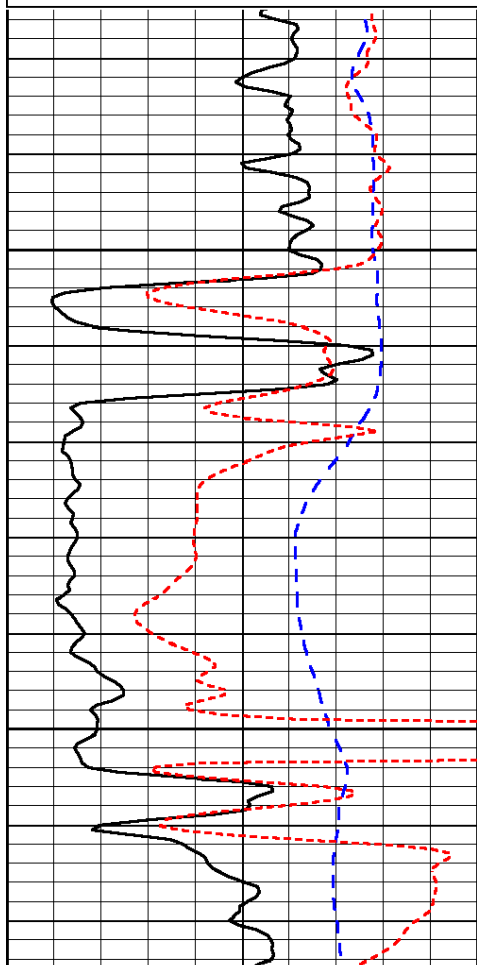




0	Gamma Ray	150
-200	SP (mV)	0
-160	Rxo / Rt	40

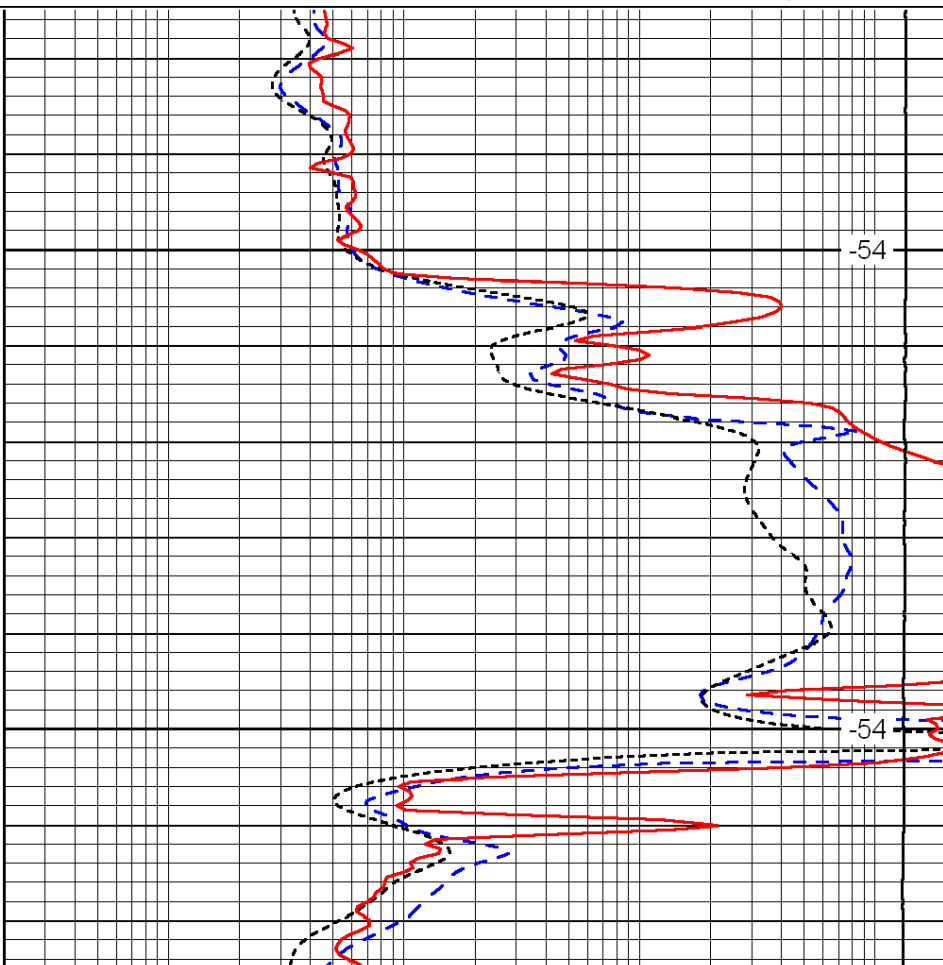
0.2	Deep Resistivity	2000
0.2	Medium Resistivity	2000
0.2	Shallow Resistivity	2000
15000	Line Tension	0

LSPD



1600

1650



-54

-54

0	Gamma Ray	150
-200	SP (mV)	0
-160	Rxo / Rt	40

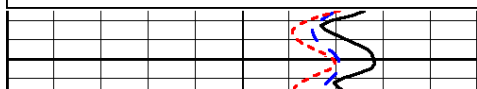
0.2	Deep Resistivity	2000
0.2	Medium Resistivity	2000
0.2	Shallow Resistivity	2000
15000	Line Tension	0

LSPD

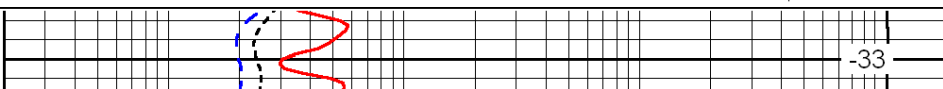
0	Gamma Ray	150
-200	SP (mV)	0
-160	Rxo / Rt	40

0.2	Deep Resistivity	2000
0.2	Medium Resistivity	2000
0.2	Shallow Resistivity	2000
15000	Line Tension	0

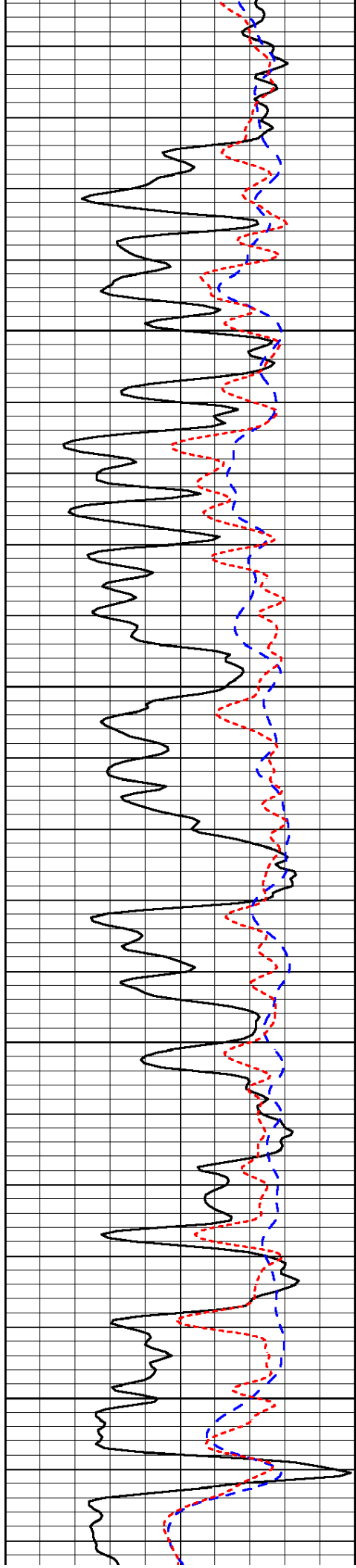
LSPD



3000



-33

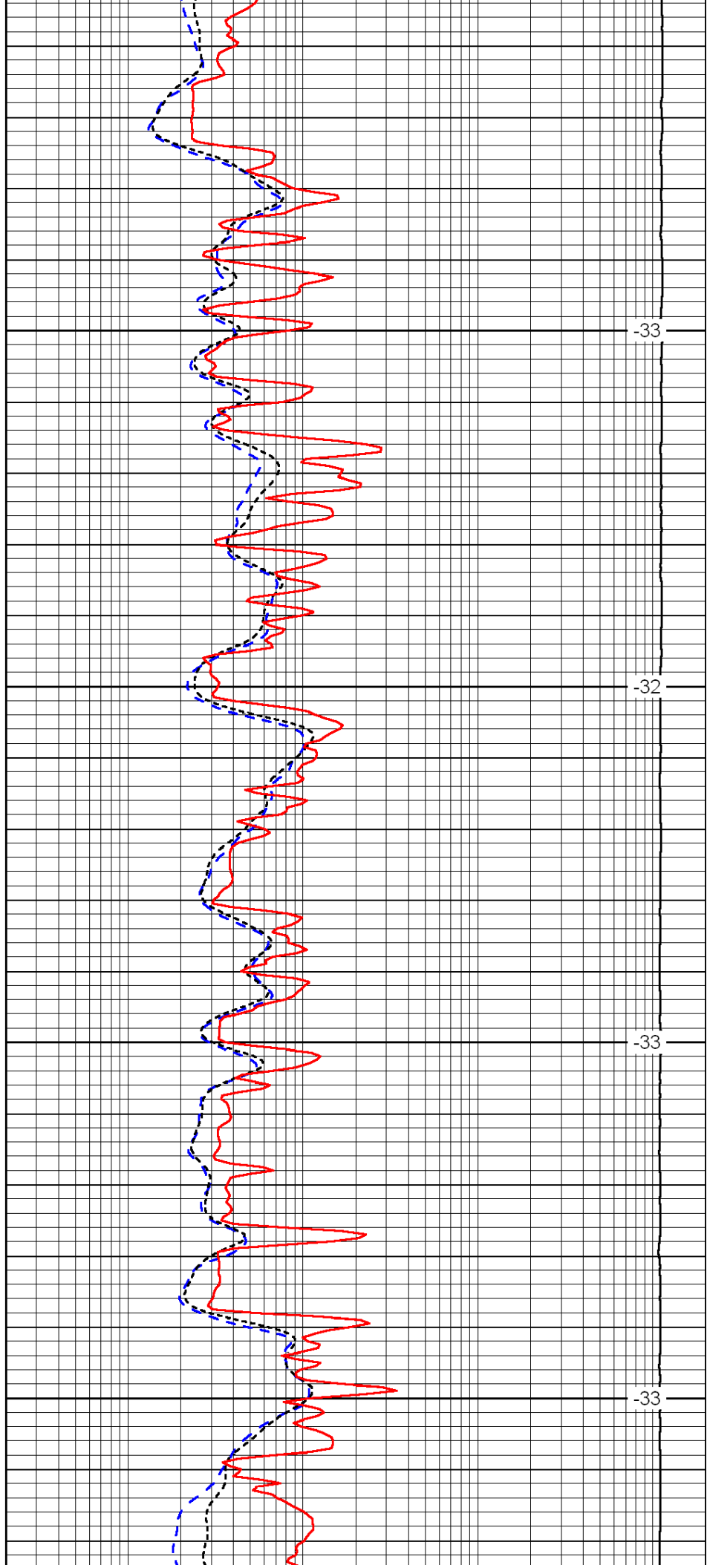


3050

3100

3150

3200

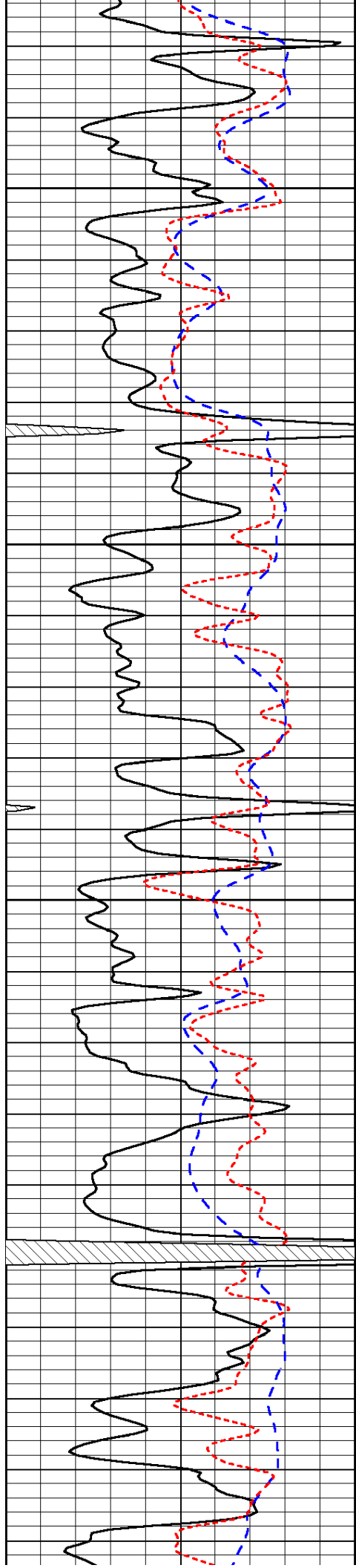


-33

-32

-33

-33

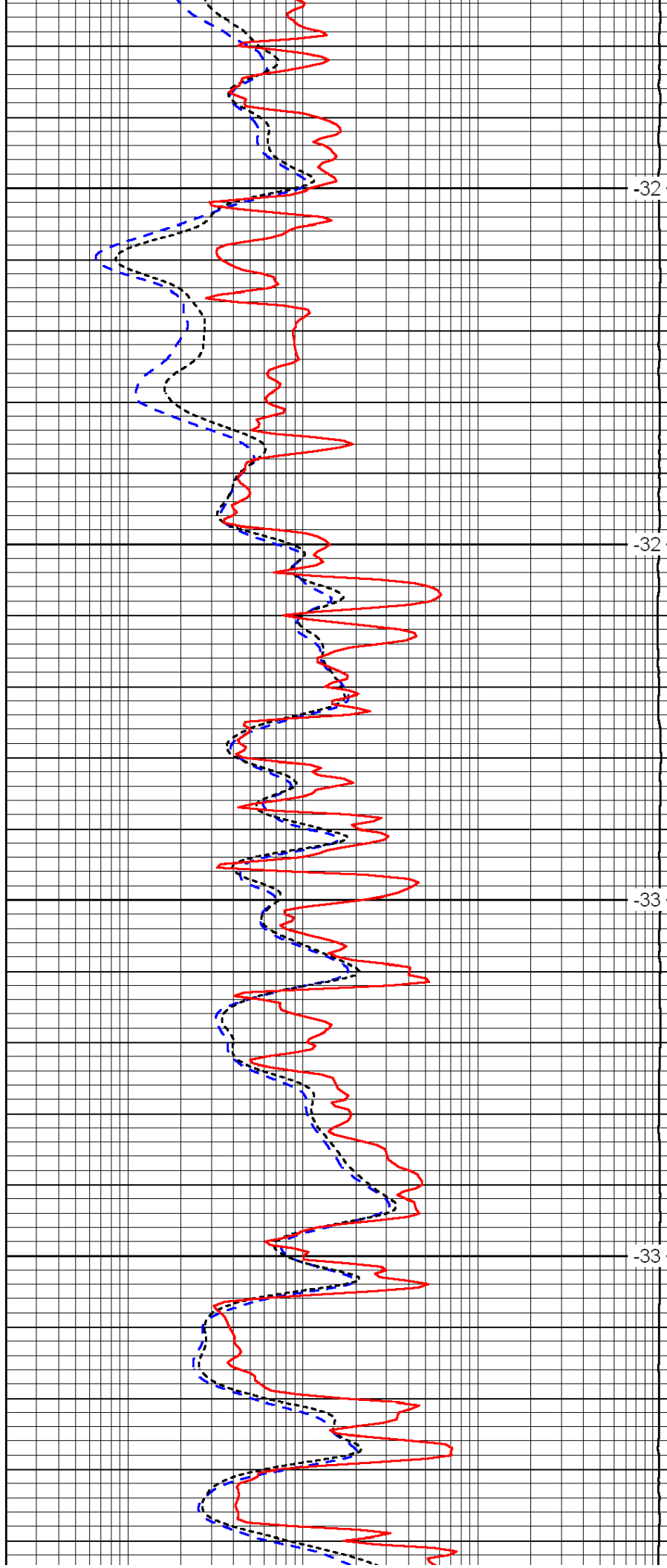


3250

3300

3350

3400

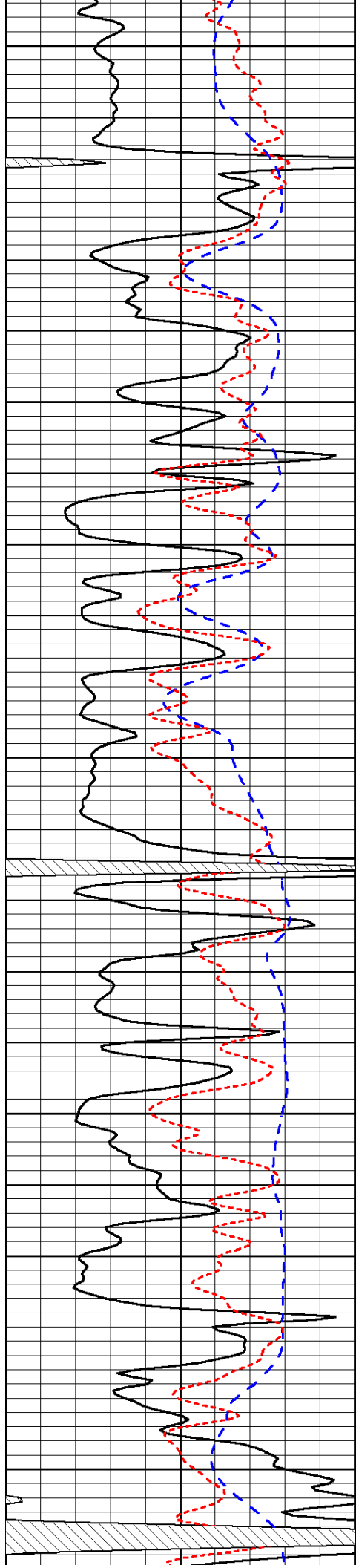


-32

-32

-33

-33



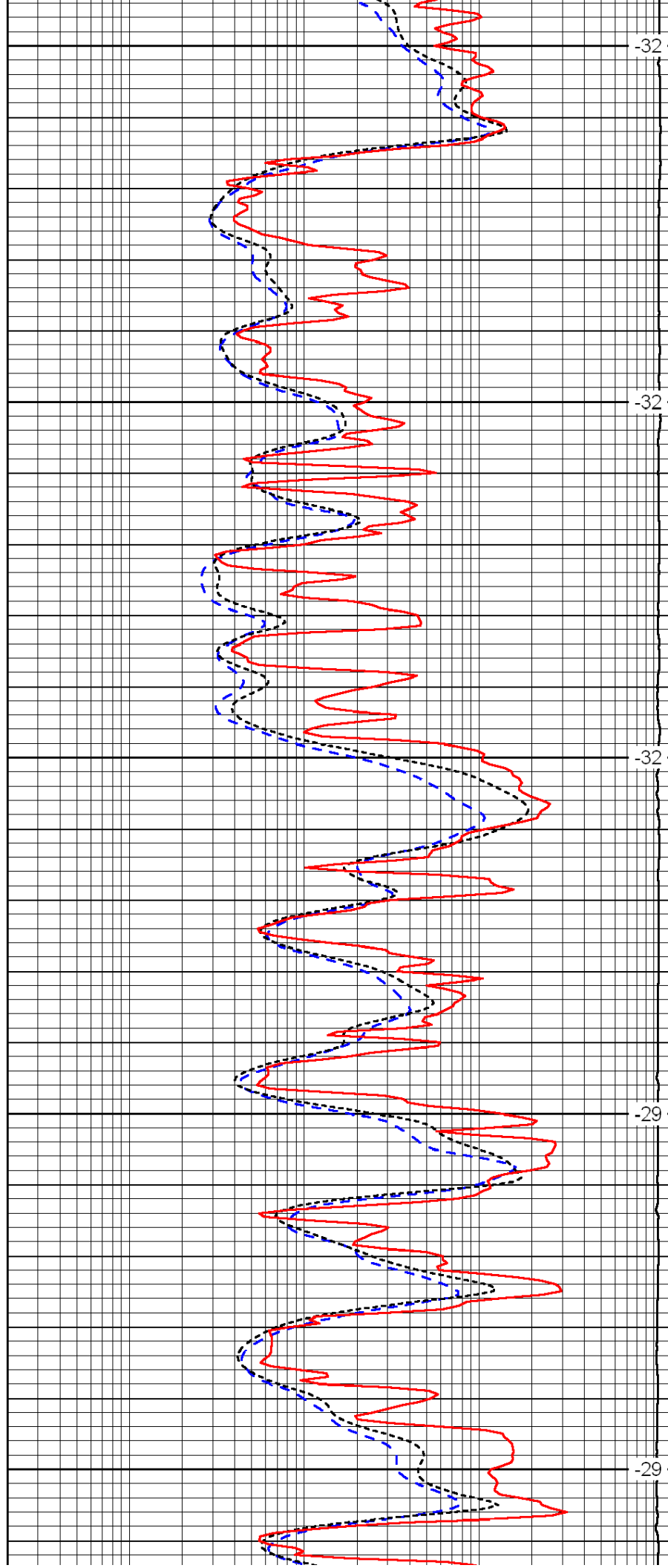
3450

3500

3550

3600

3650



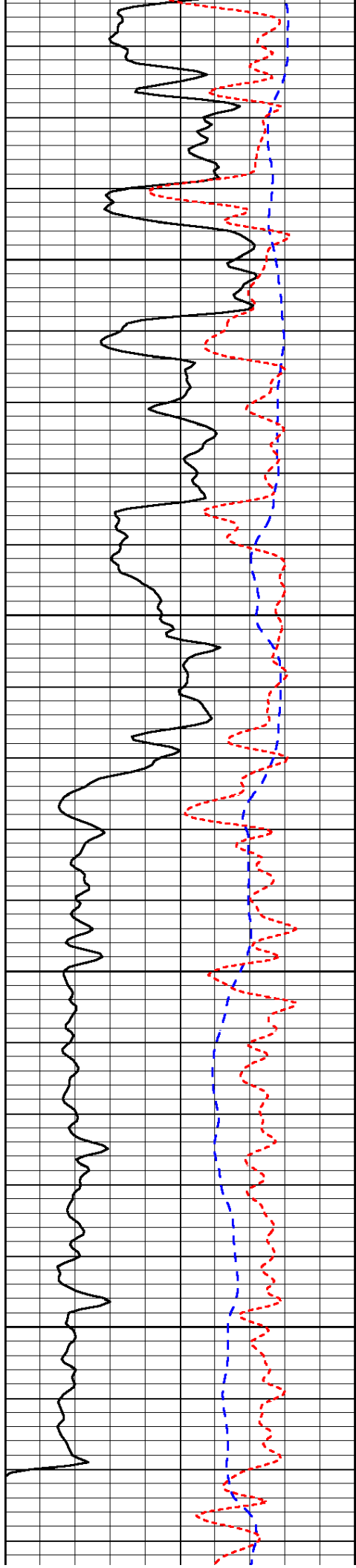
-32

-32

-32

-29

-29

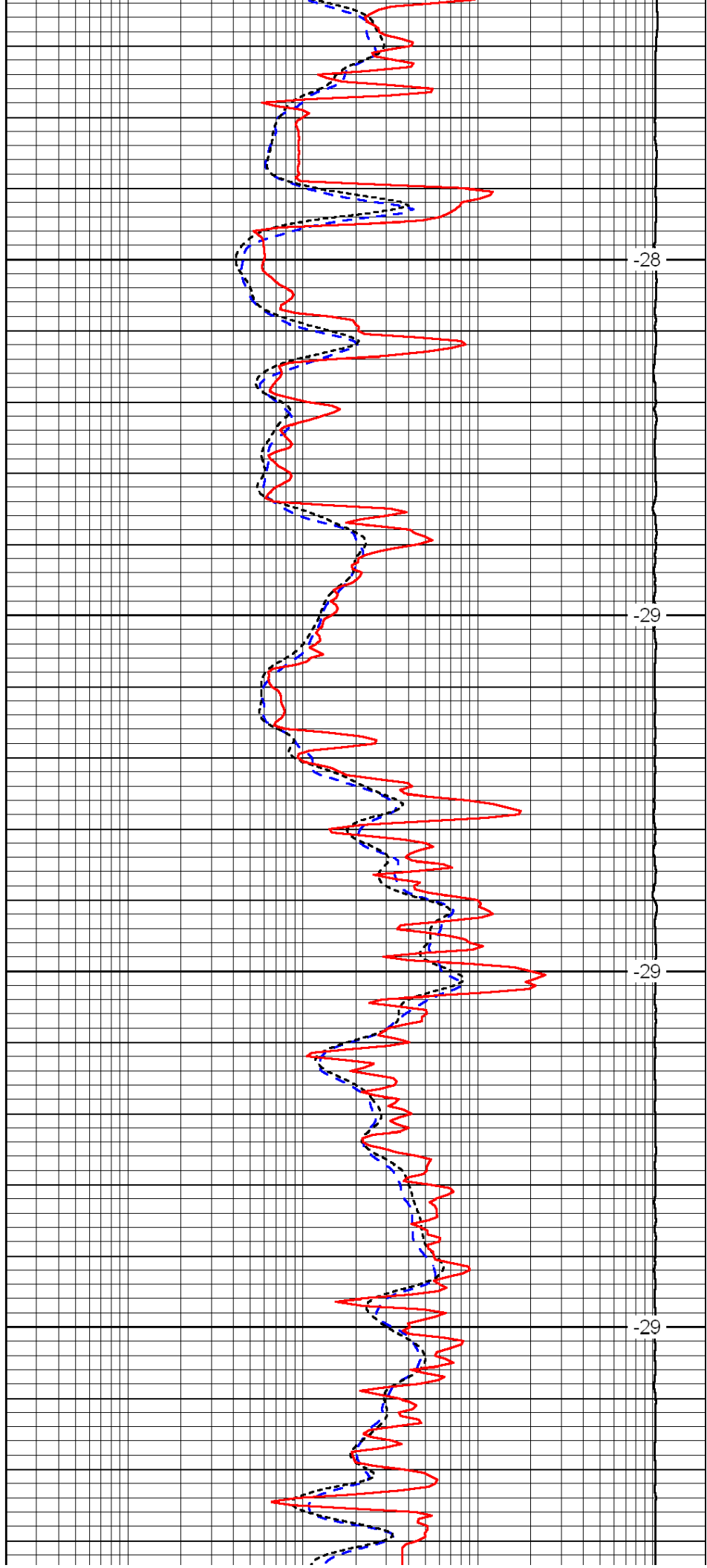


3700

3750

3800

3850

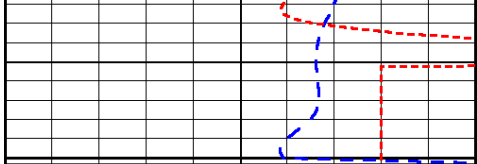


-28

-29

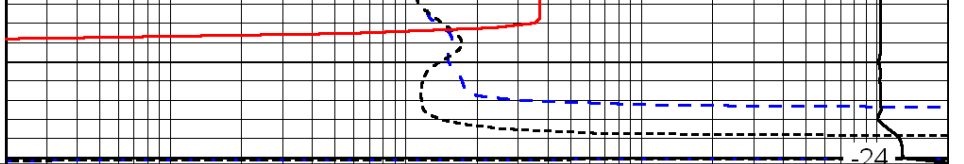
-29

-29



0	Gamma Ray	150
-200	SP (mV)	0
-160	Rxo / Rt	40

3900



0.2	Deep Resistivity	2000
0.2	Medium Resistivity	2000
0.2	Shallow Resistivity	2000
15000	Line Tension	0

LSPD