



**COMPLETION
& PRODUCTION
SERVICES CO.**

**DUAL
INDUCTION
LOG**

Company VINCENT OIL CORPORATION
Well SANKO FARMS #2-10
Field
County FORD
State KANSAS

Company VINCENT OIL CORPORATION
Well SANKO FARMS #2-10
Field
County FORD State KANSAS

Location: API # : 15-057-20903-0000
880' FSL & 880' FEL
SEC 10 TWP 28S RGE 23W
Permanent Datum GROUND LEVEL Elevation 2461
Log Measured From KELLY BUSHING 12' A.G.L.
Drilling Measured From KELLY BUSHING
Other Services
CDL/CNL/PE
MEL/SON
Elevation
K.B. 2473
D.F. 2471
G.L. 2461

Date	7/21/13
Run Number	ONE
Depth Driller	5152
Depth Logger	5150
Bottom Logged Interval	5148
Top Log Interval	0
Casing Driller	8 5/8"@654'
Casing Logger	652'
Bit Size	7 7/8"
Type Fluid in Hole	CHEMICAL MUD
Density / Viscosity	9.35/49
pH / Fluid Loss	10.5/11.2
Source of Sample	FLOWLINE
Rim @ Meas. Temp	0.55@90F
Rmf @ Meas. Temp	0.41@90F
Rmc @ Meas. Temp	0.66@90F
Source of Rmf / Rmc	MEASUREMENT
Rim @ BHT	0.39@126F
Time Circulation Stopped	22 HOURS
Time Logger on Bottom	
Maximum Recorded Temperature	126F
Equipment Number	4854
Location	HAYS, KANSAS
Recorded By	JEFF GRONEMEG
Witnessed By	KEN LeBLANC

<<< Fold Here >>>

All interpretations are opinions based on inferences from electrical or other measurements and we cannot and do not guarantee the accuracy or correctness of any interpretation, and we shall not, except in the case of gross or willful negligence on our part, be liable or responsible for any loss, costs, damages, or expenses incurred or sustained by anyone resulting from any interpretation made by any of our officers, agents or employees. These interpretations are also subject to our general terms and conditions set out in our current Price Schedule.

Comments

THANK YOU FOR USING "NABORS" HAYS, KANSAS (785) 628-6395
DIRECTIONS
FORD, KS. & SADDLE RD., WEST 2 MILES TO RD 123 - 2 MILES SOUTH
1 1/4 MILES WEST - NORTH INTO

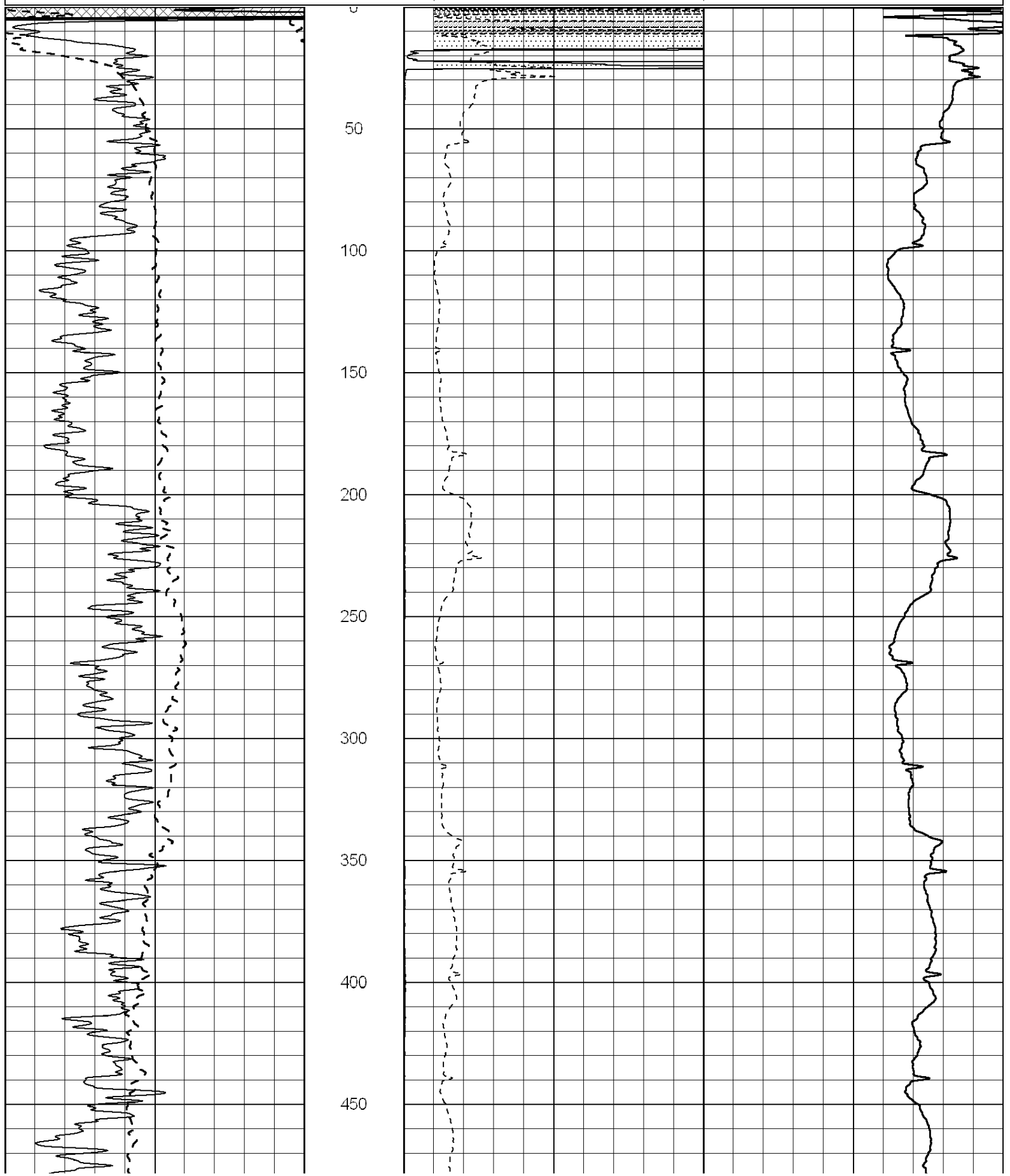
Database File: 011192pe.db
Dataset Pathname: pass3.5
Presentation Format: _dil2
Dataset Creation: Sun Jul 21 21:17:27 2013
Charted by: Depth in Feet scaled 1:600

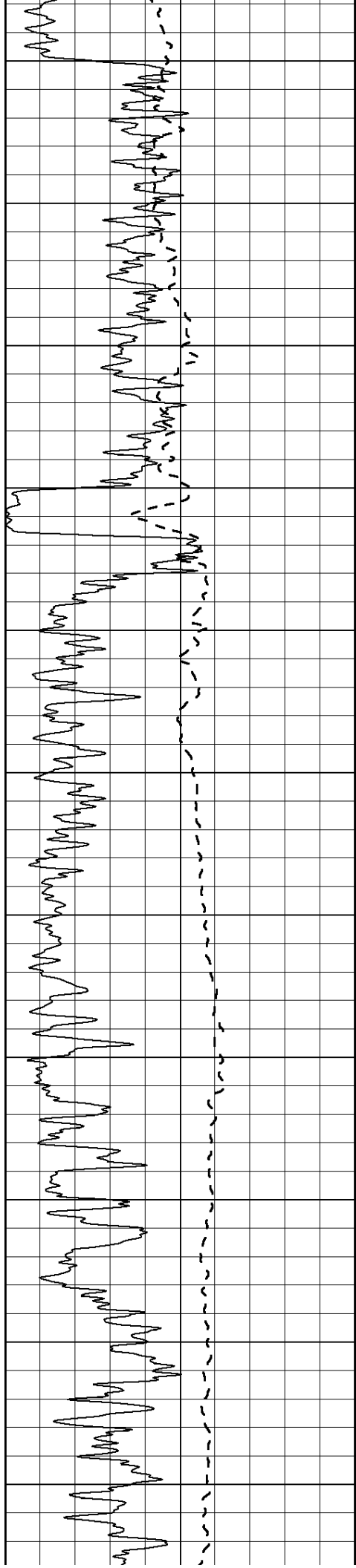
0	Gamma Ray (GAPI)	150
-100	SP (mV)	100

0	RLL3 (Ohm-m)	50
0	RILD (Ohm-m)	50

1000 CILD (mmho/m) 0

50	RILD X10 (Ohm-m)	500
50	RLL3 X10 (Ohm-m)	500





500

550

600

650

700

750

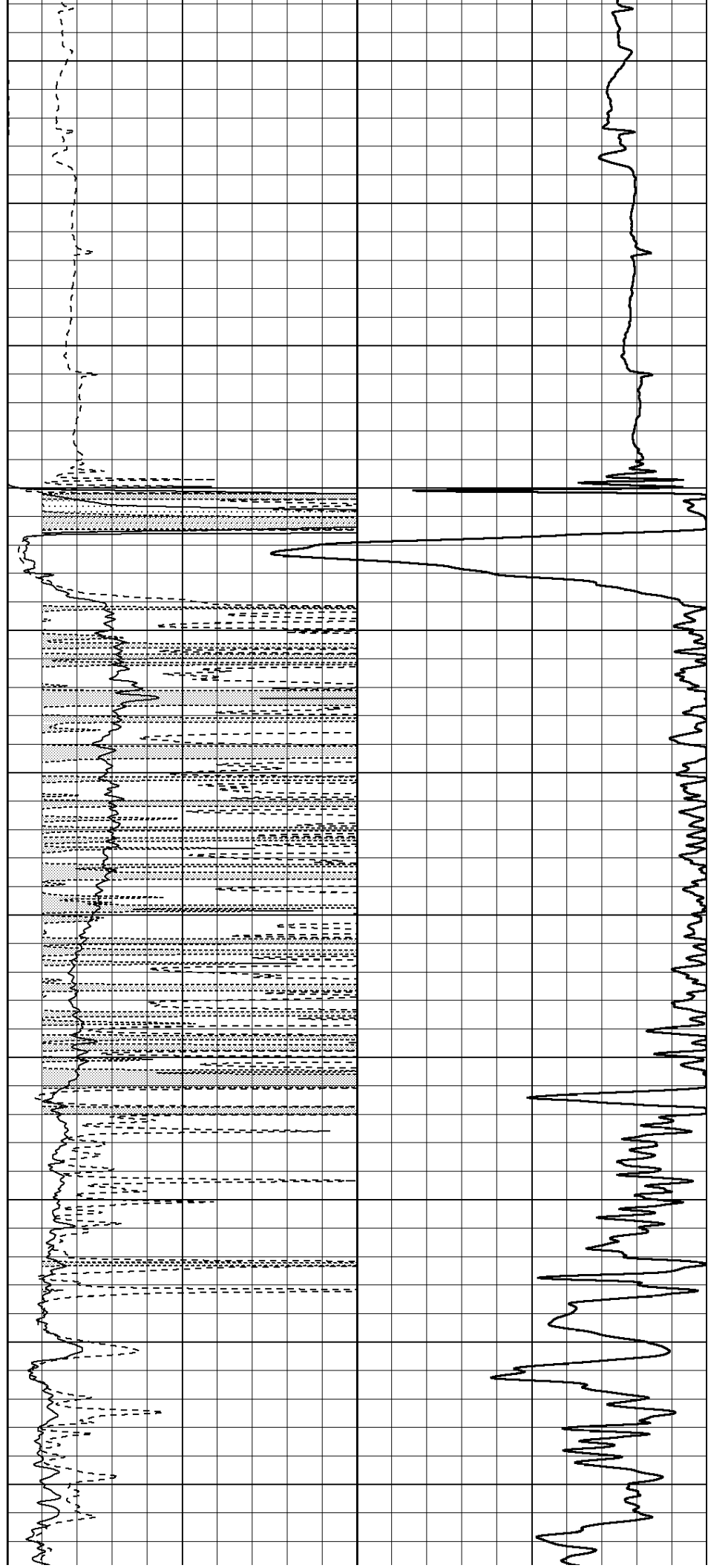
800

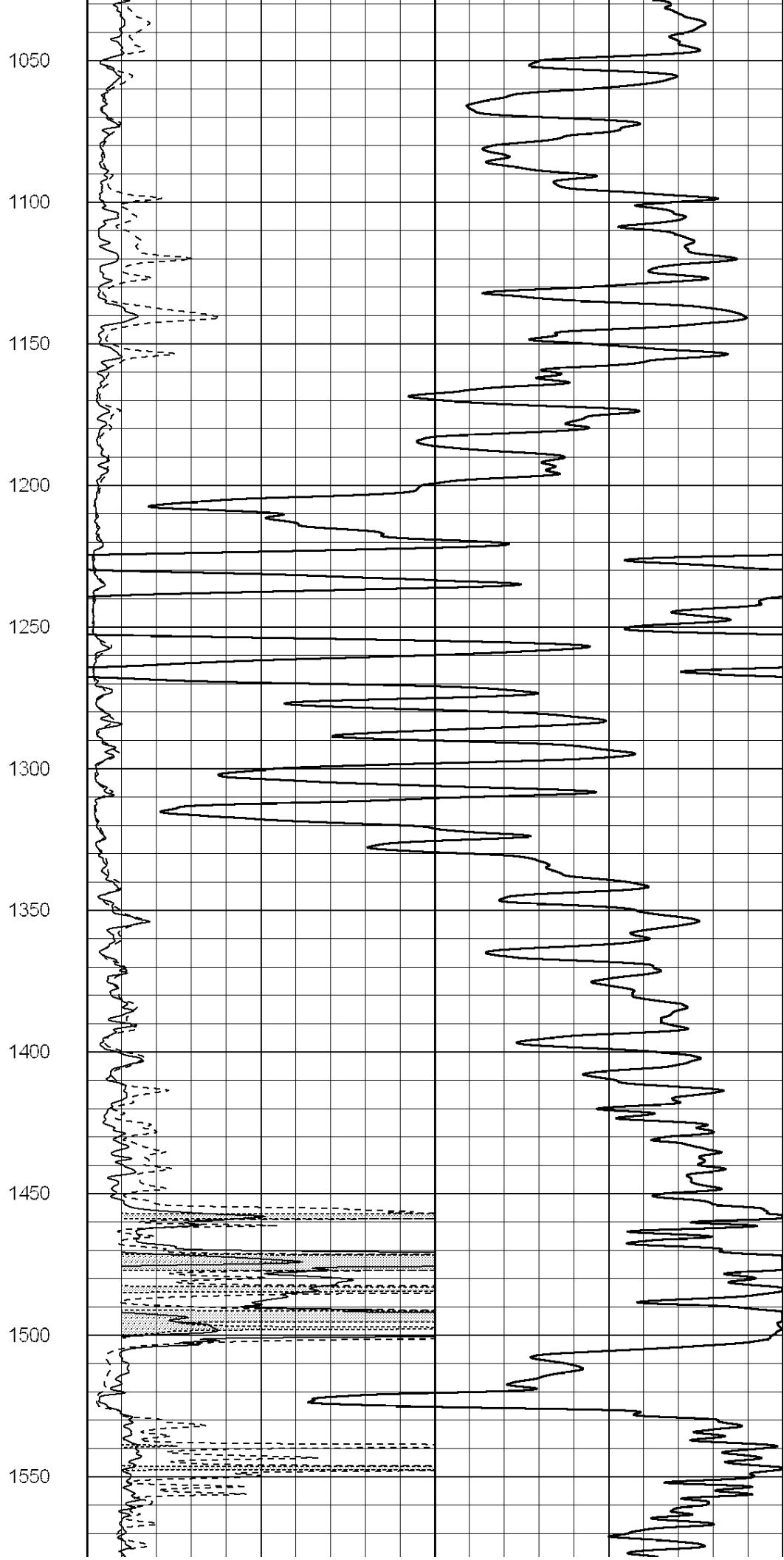
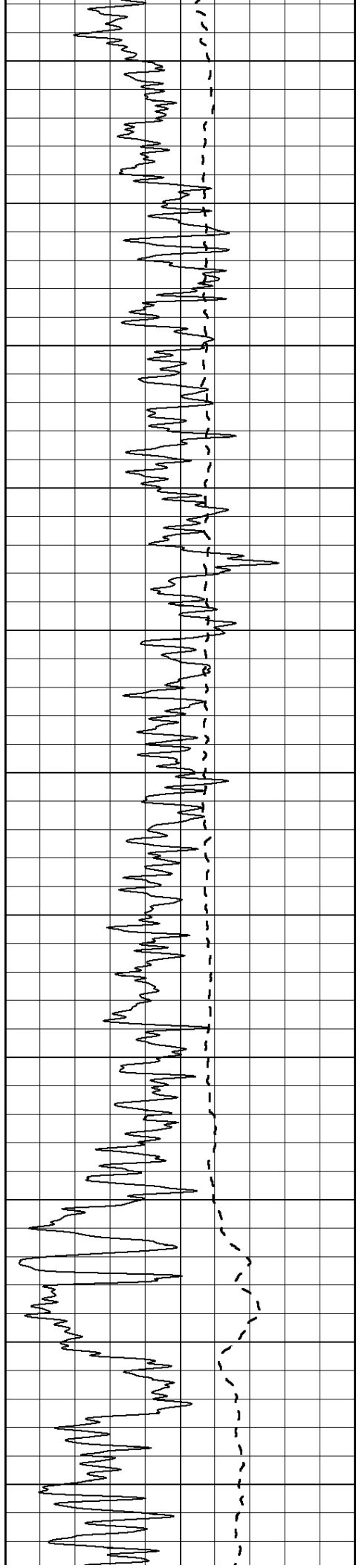
850

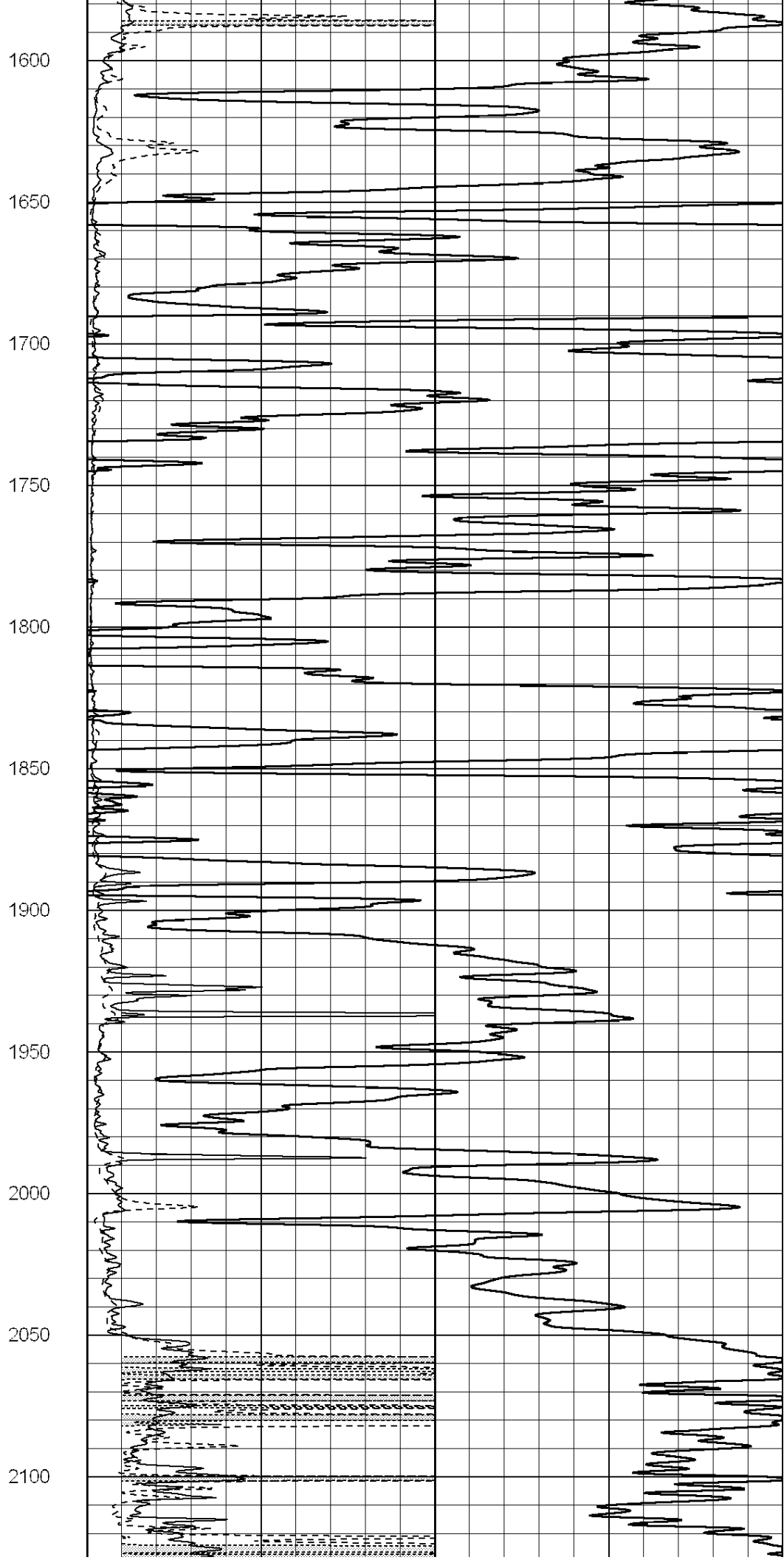
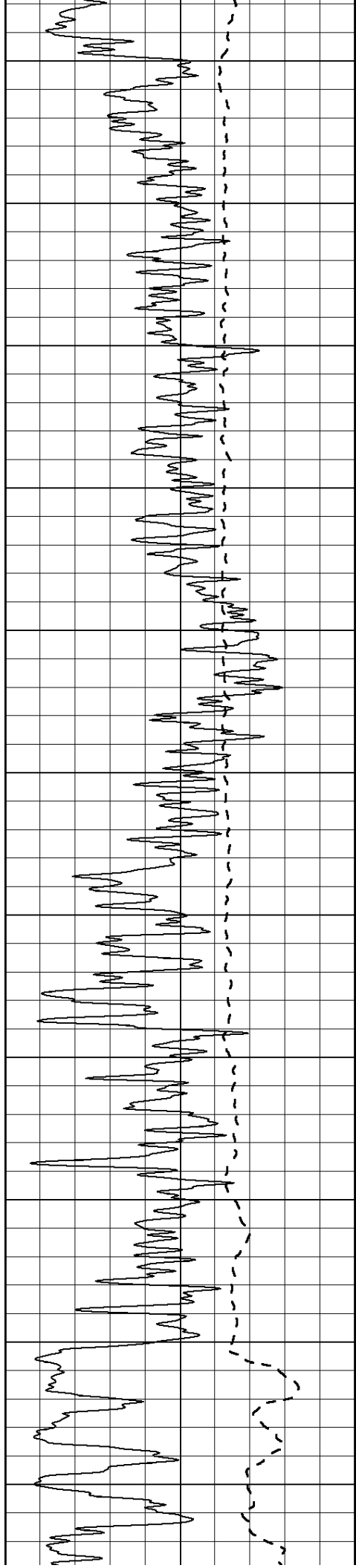
900

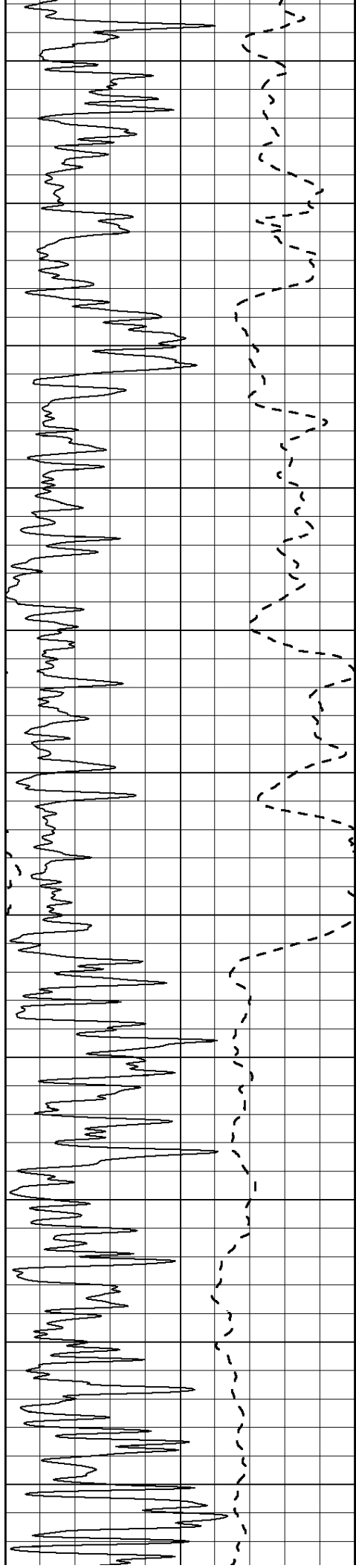
950

1000









2150

2200

2250

2300

2350

2400

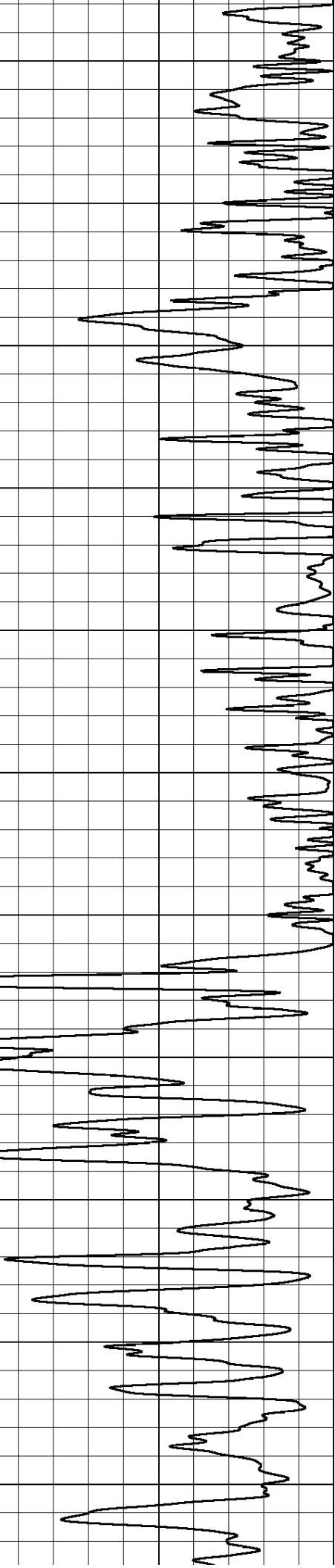
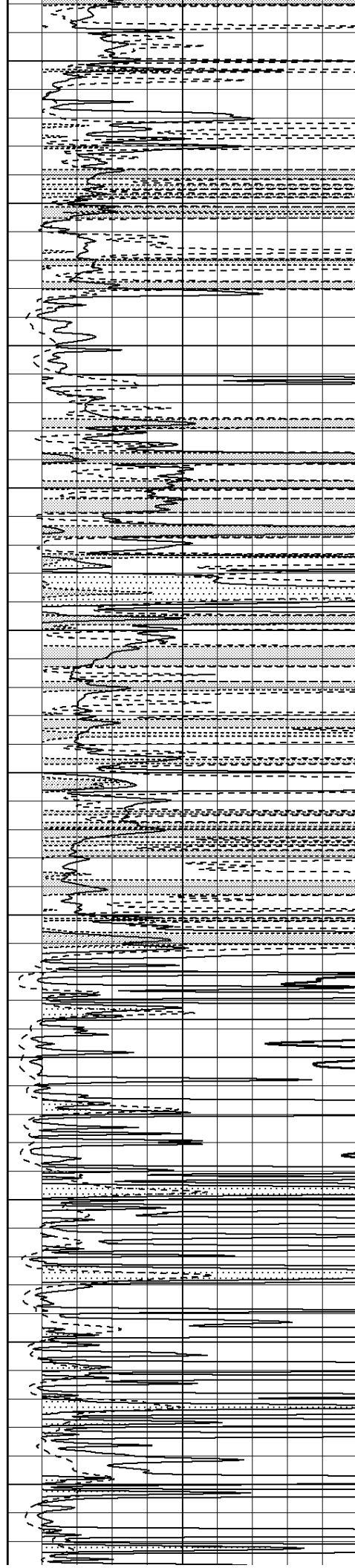
2450

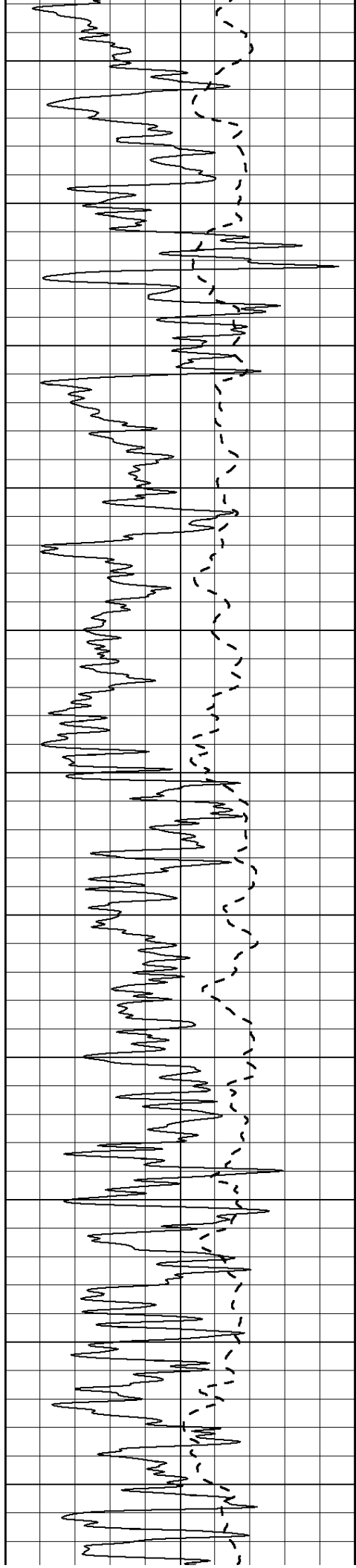
2500

2550

2600

2650





2700

2750

2800

2850

2900

2950

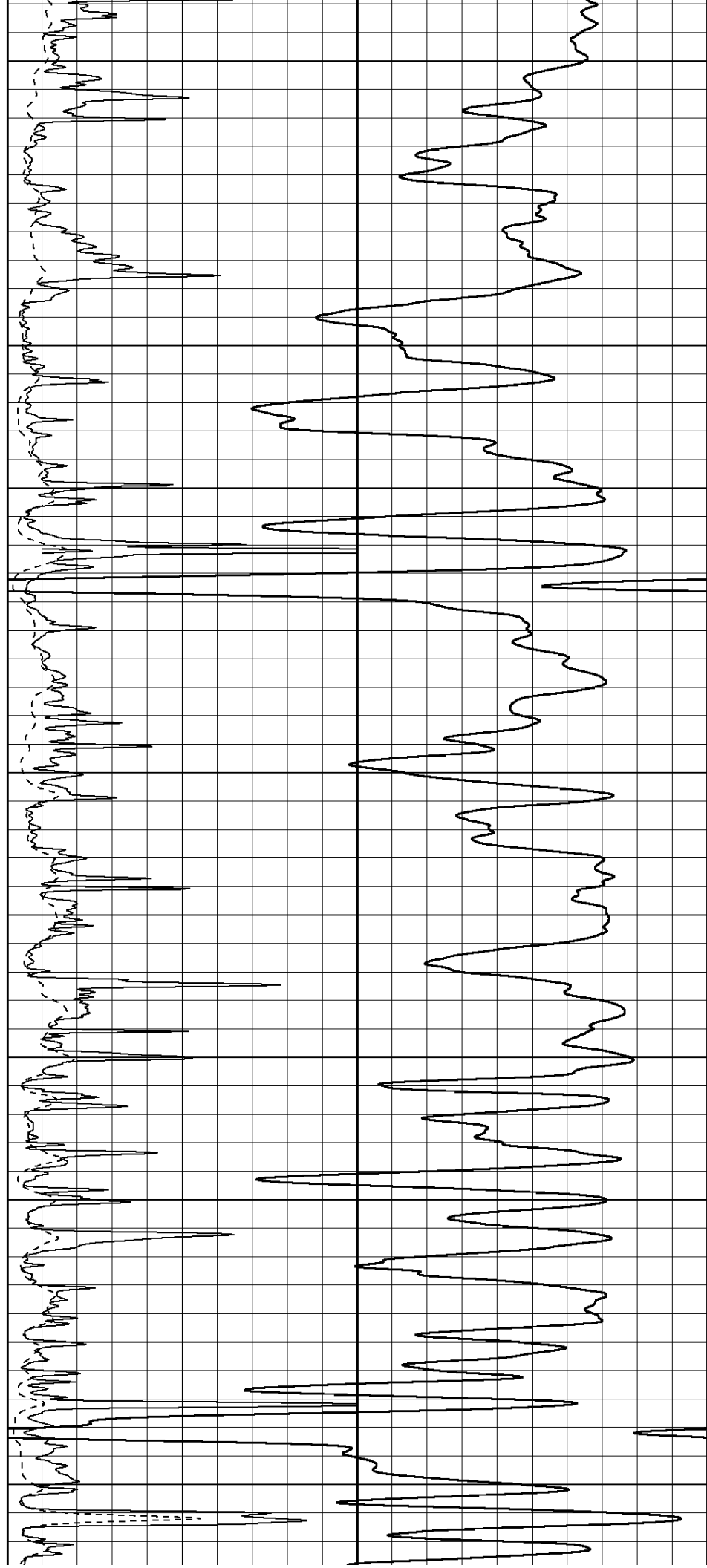
3000

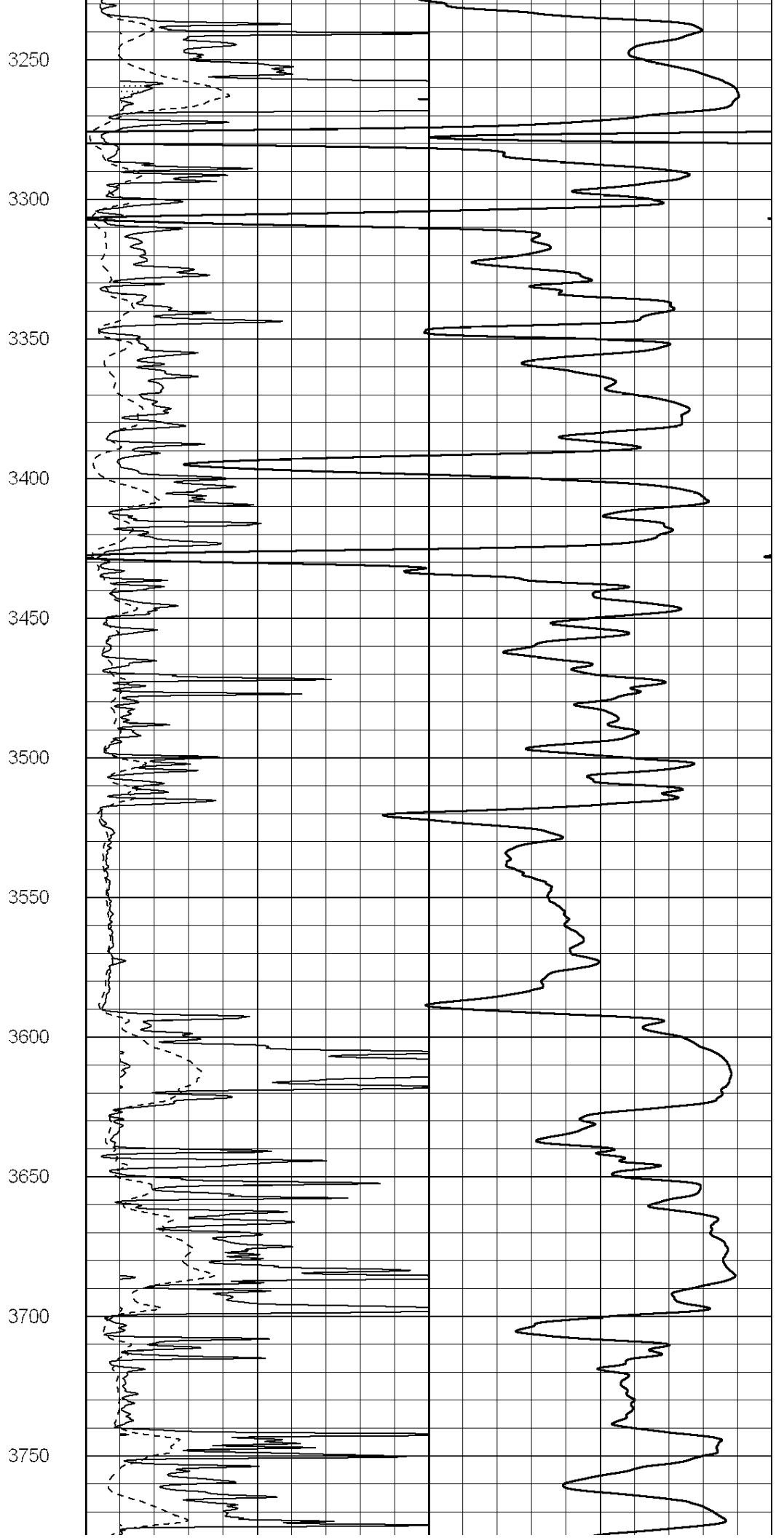
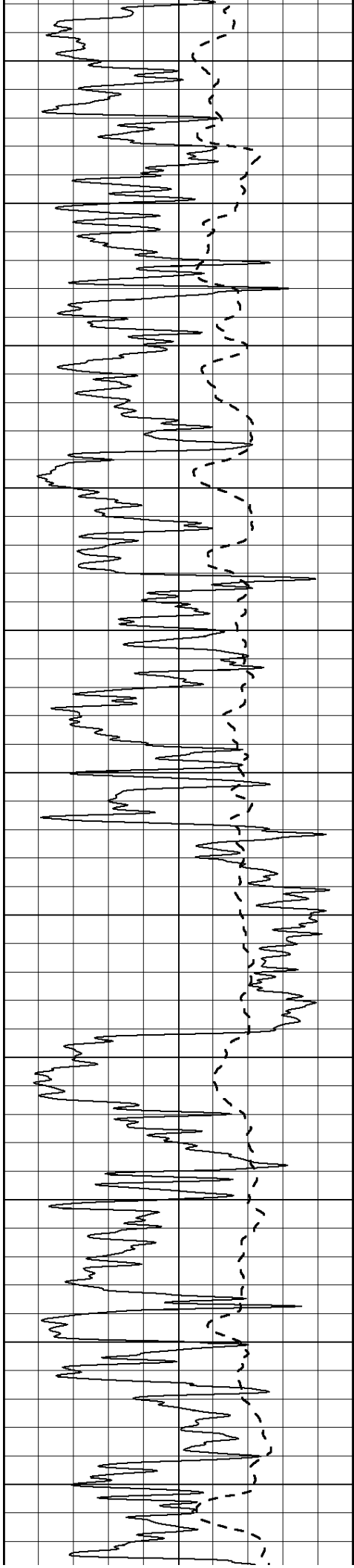
3050

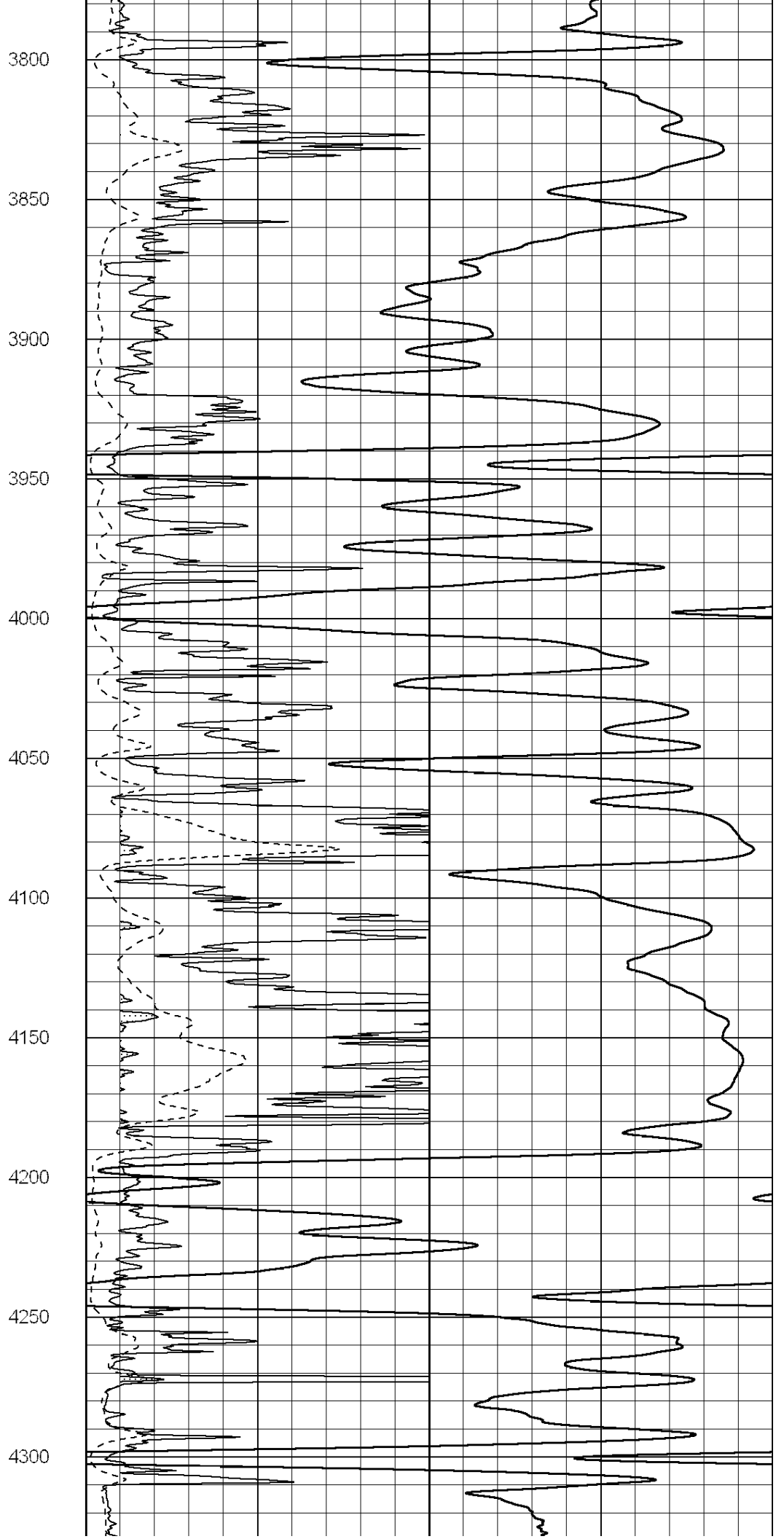
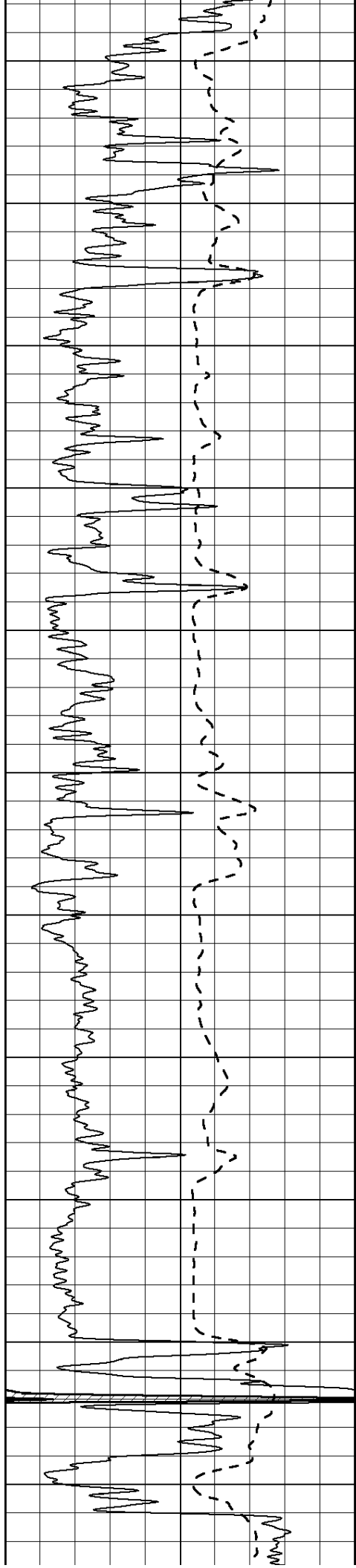
3100

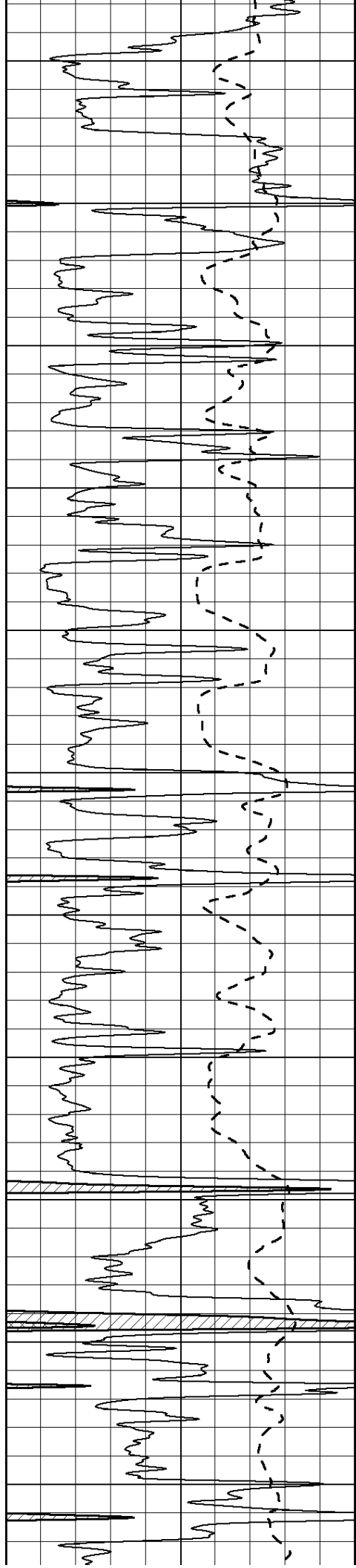
3150

3200









4350

4400

4450

4500

4550

4600

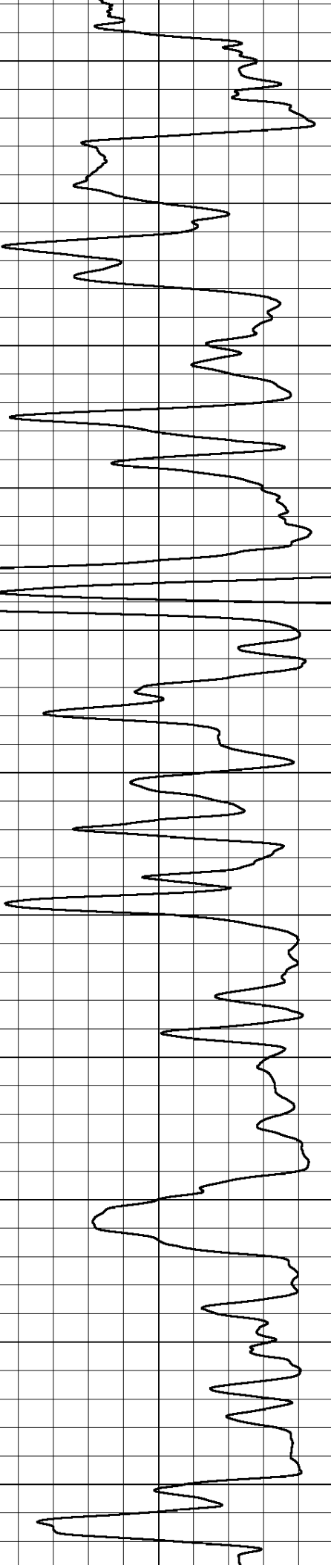
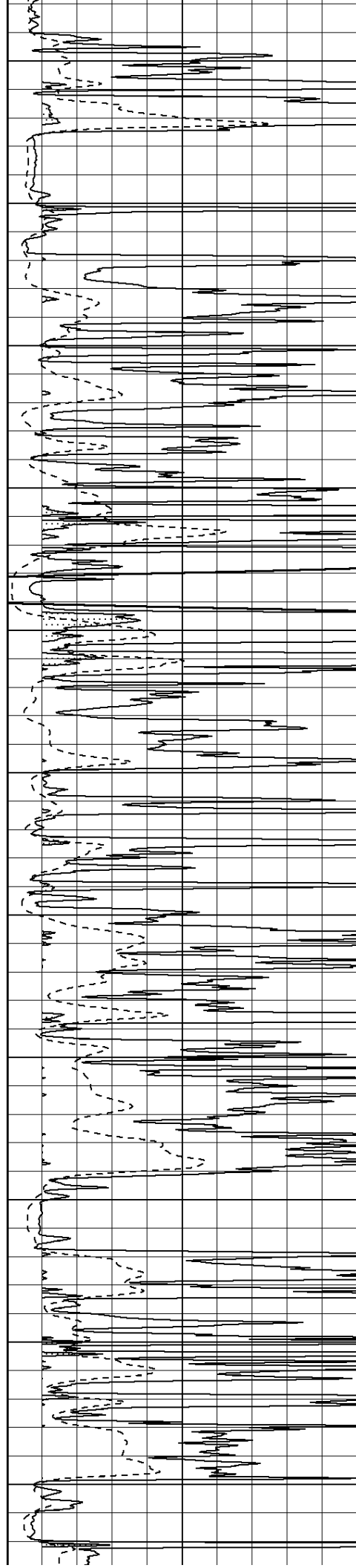
4650

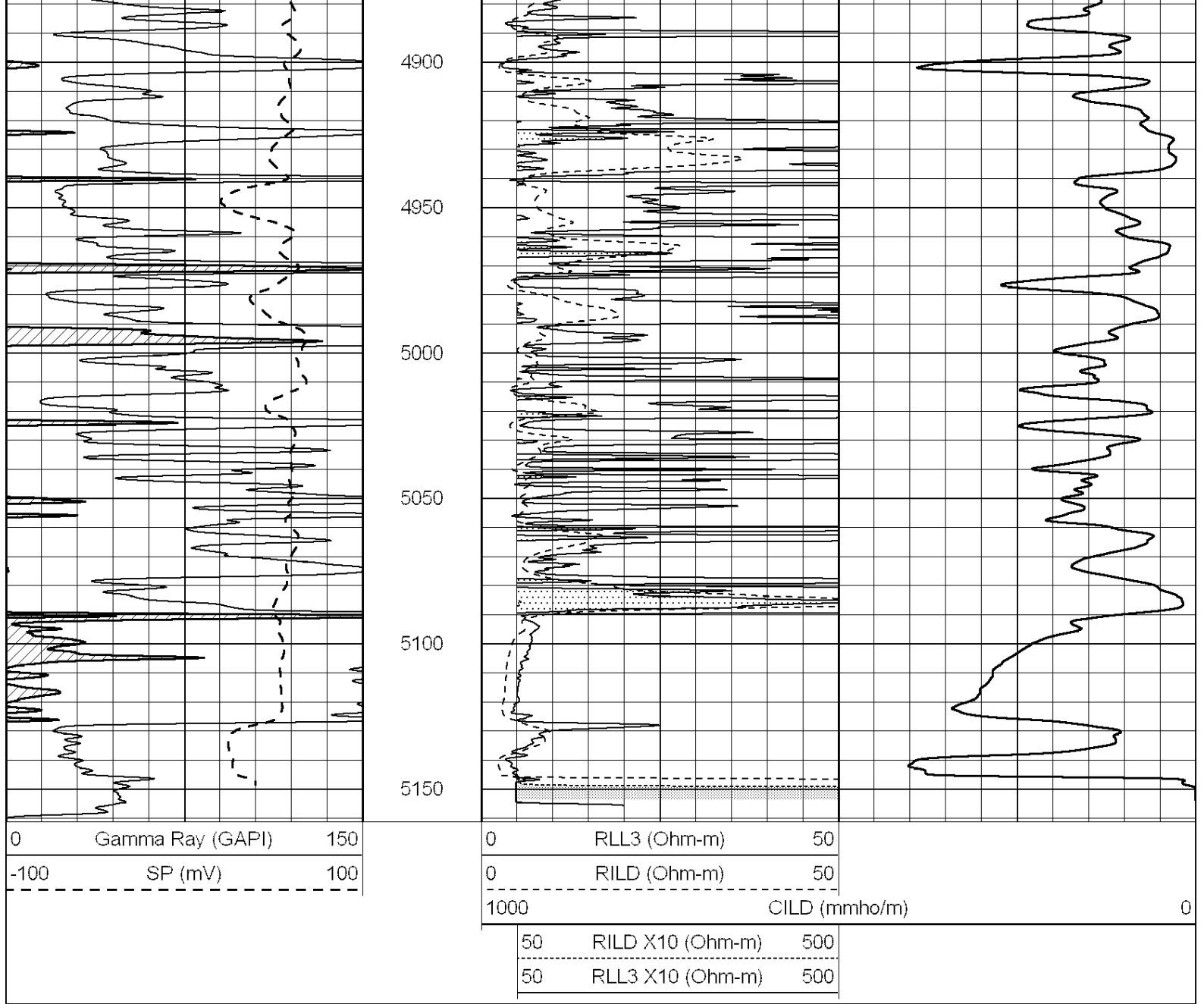
4700

4750

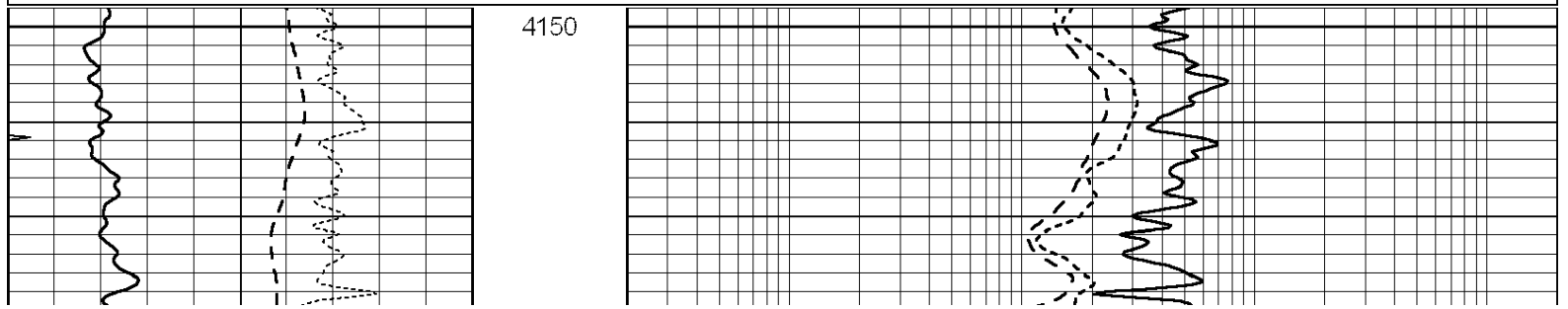
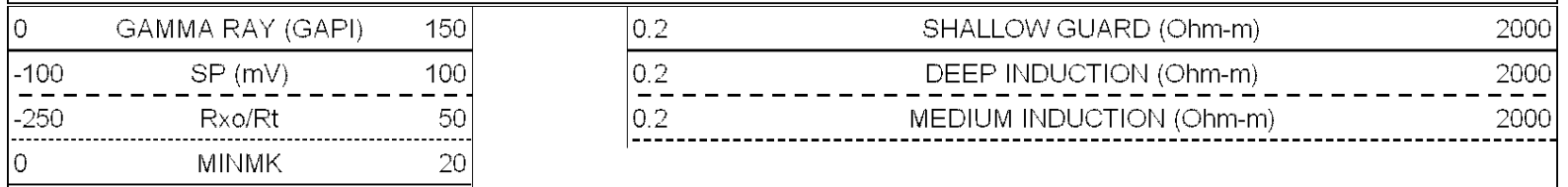
4800

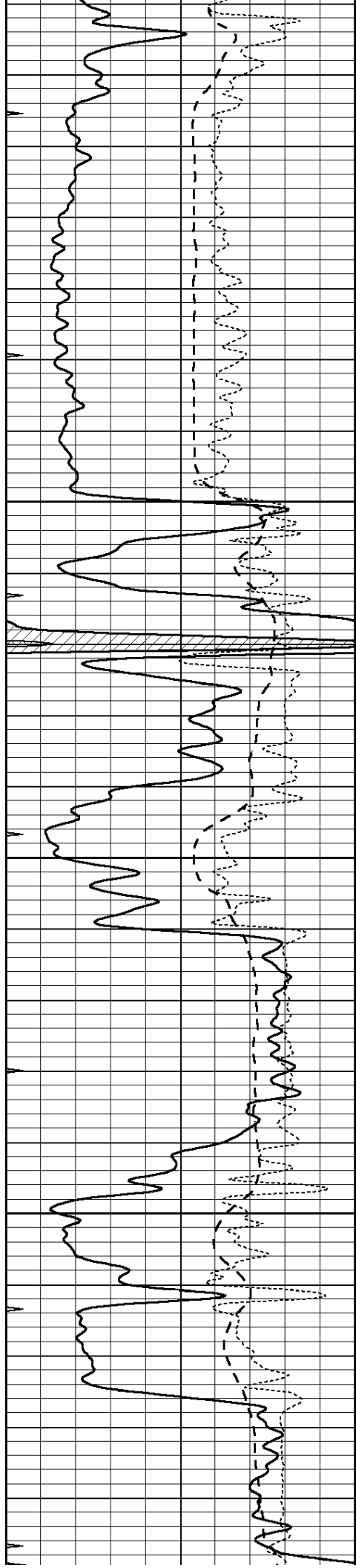
4850





Database File: 011192pe.db
 Dataset Pathname: pass3.5
 Presentation Format: _dil
 Dataset Creation: Sun Jul 21 21:17:27 2013
 Charted by: Depth in Feet scaled 1:240



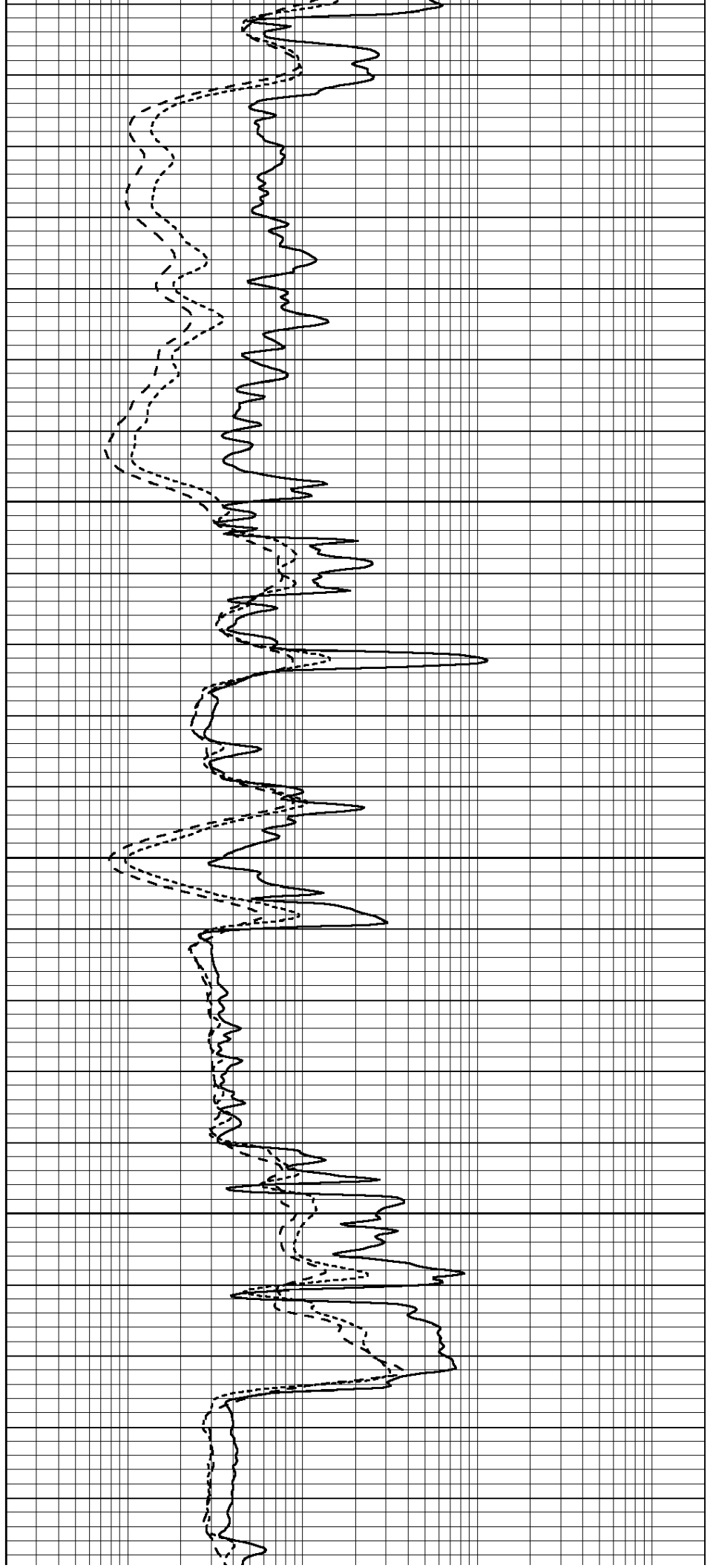


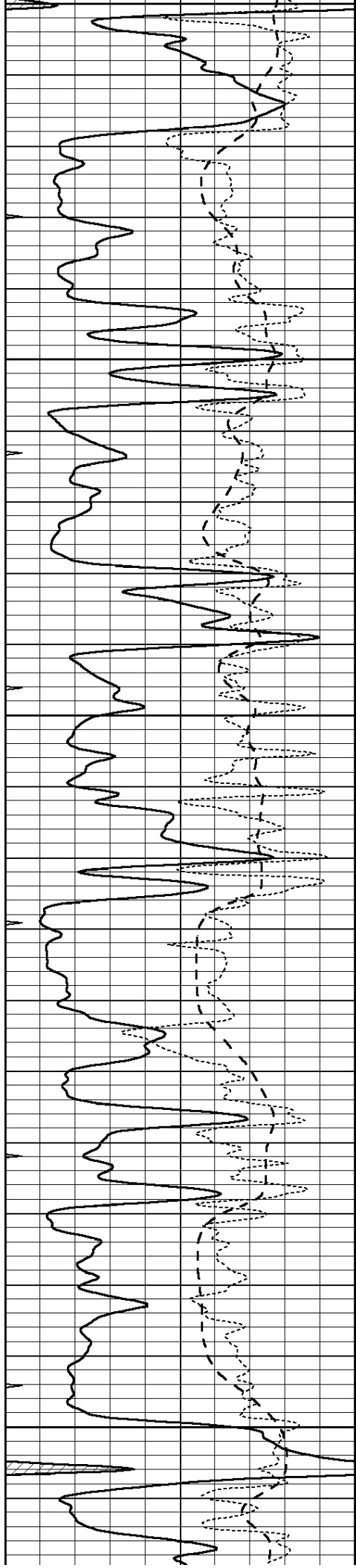
4200

4250

4300

4350





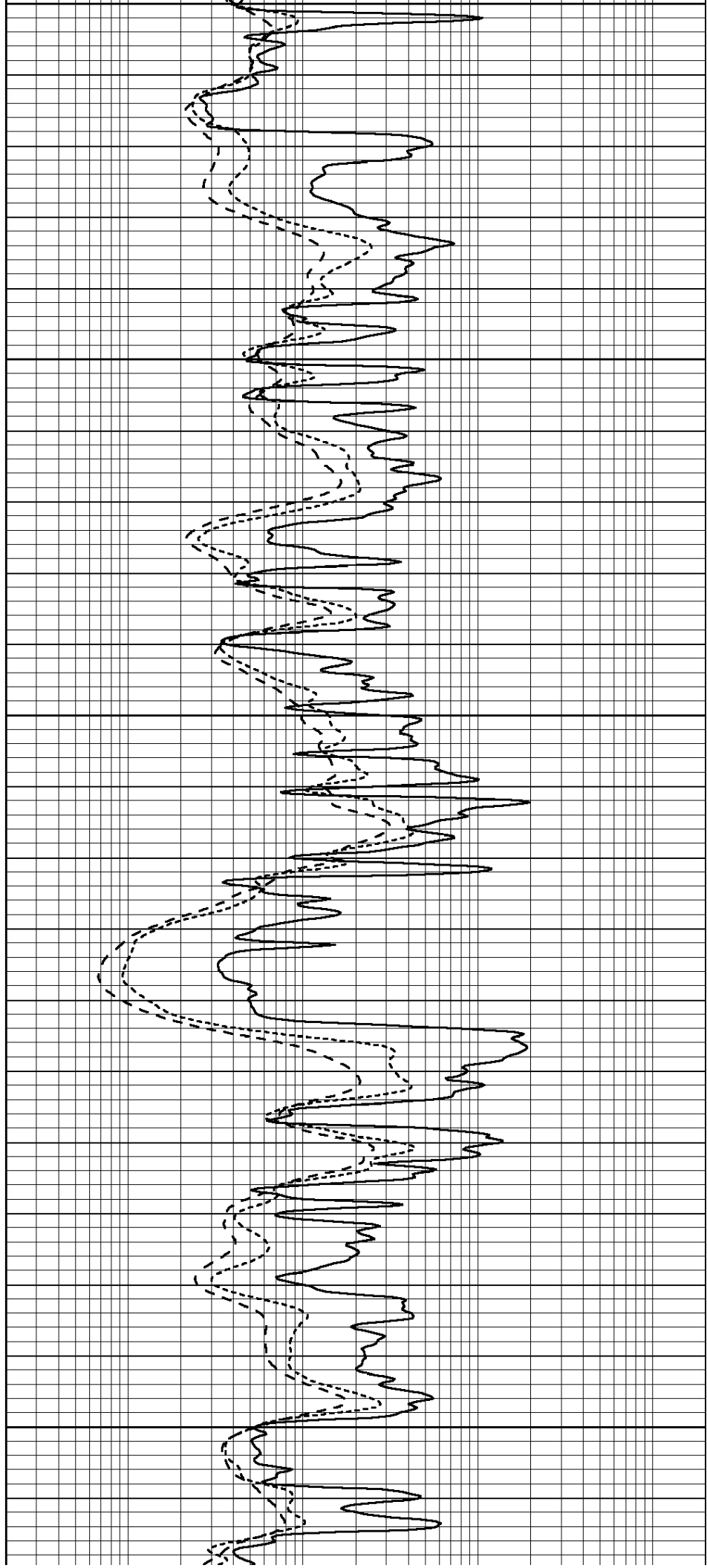
4400

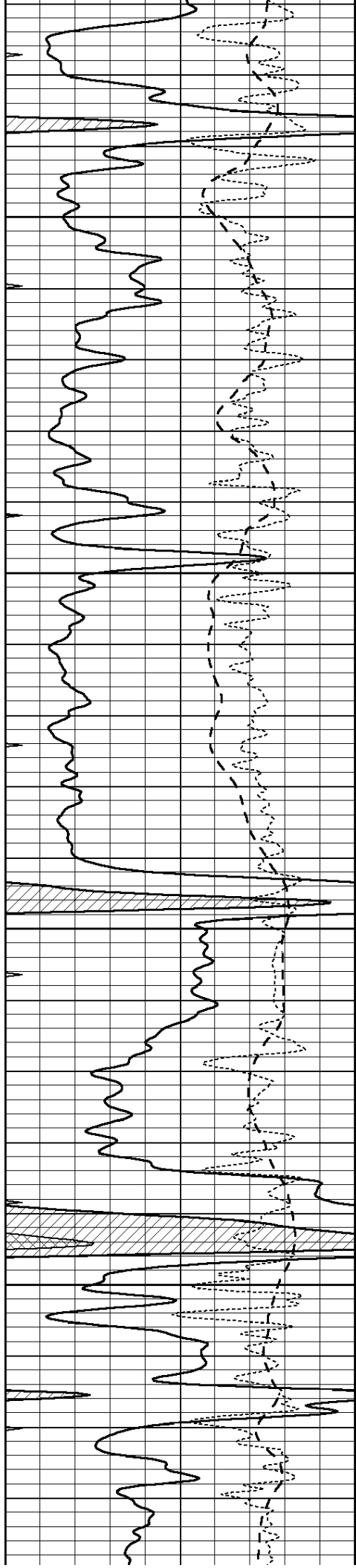
4450

4500

4550

4600



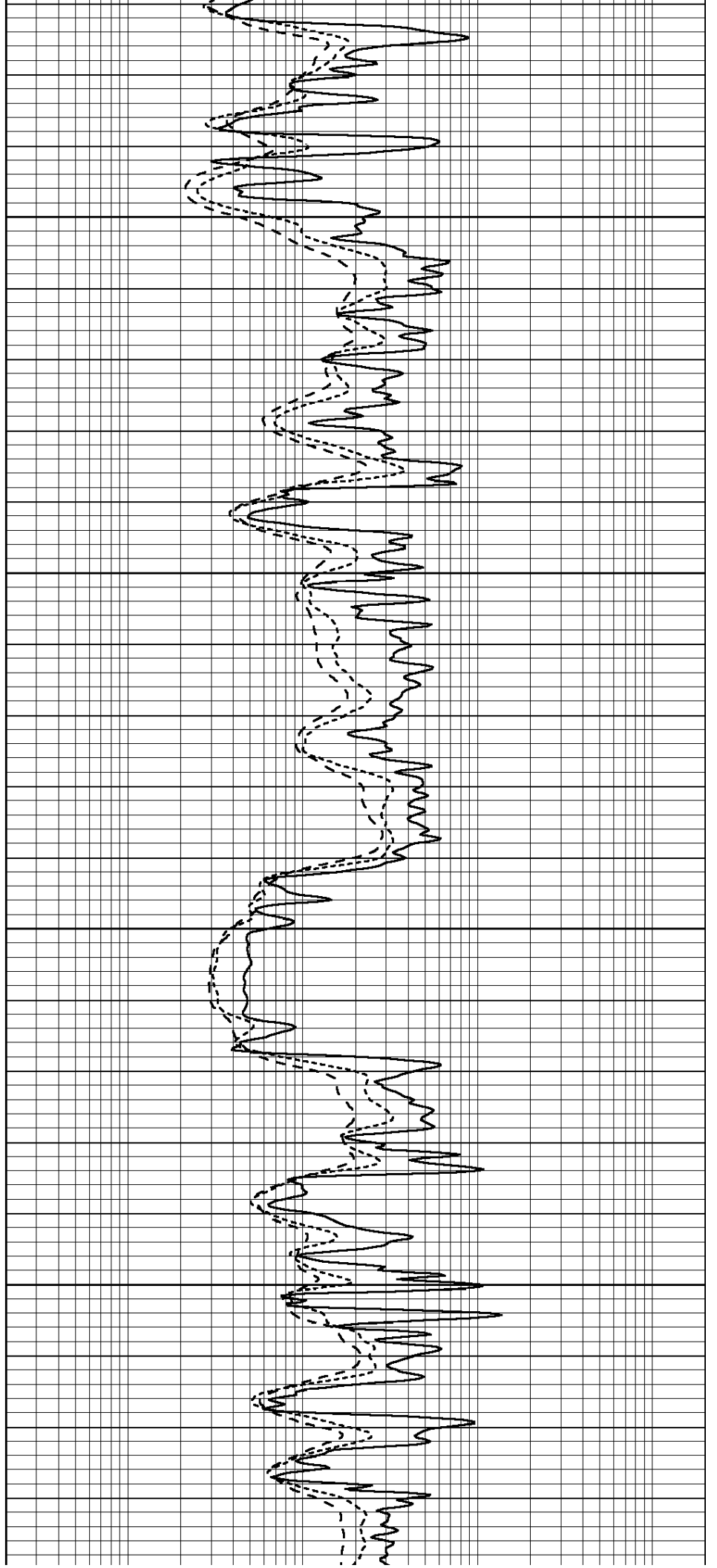


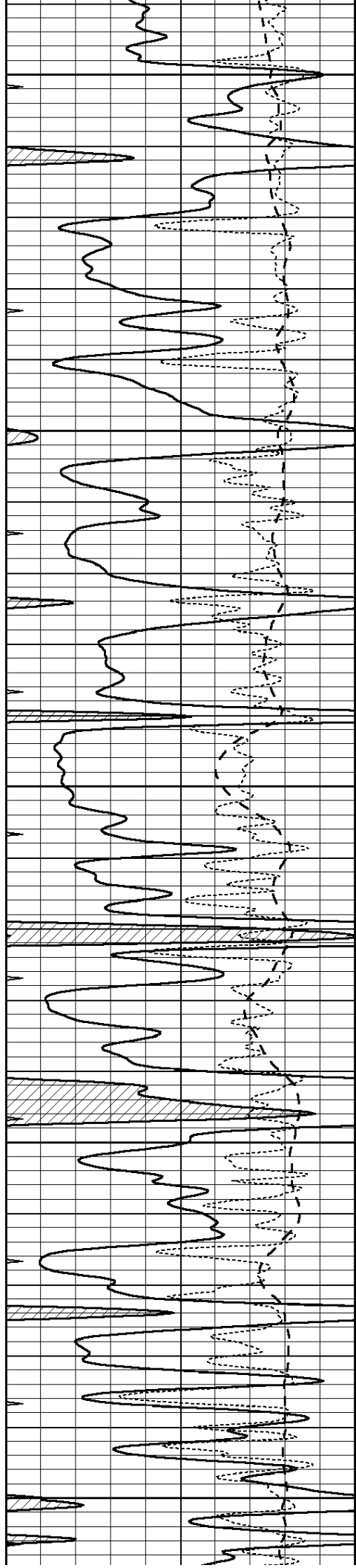
4650

4700

4750

4800





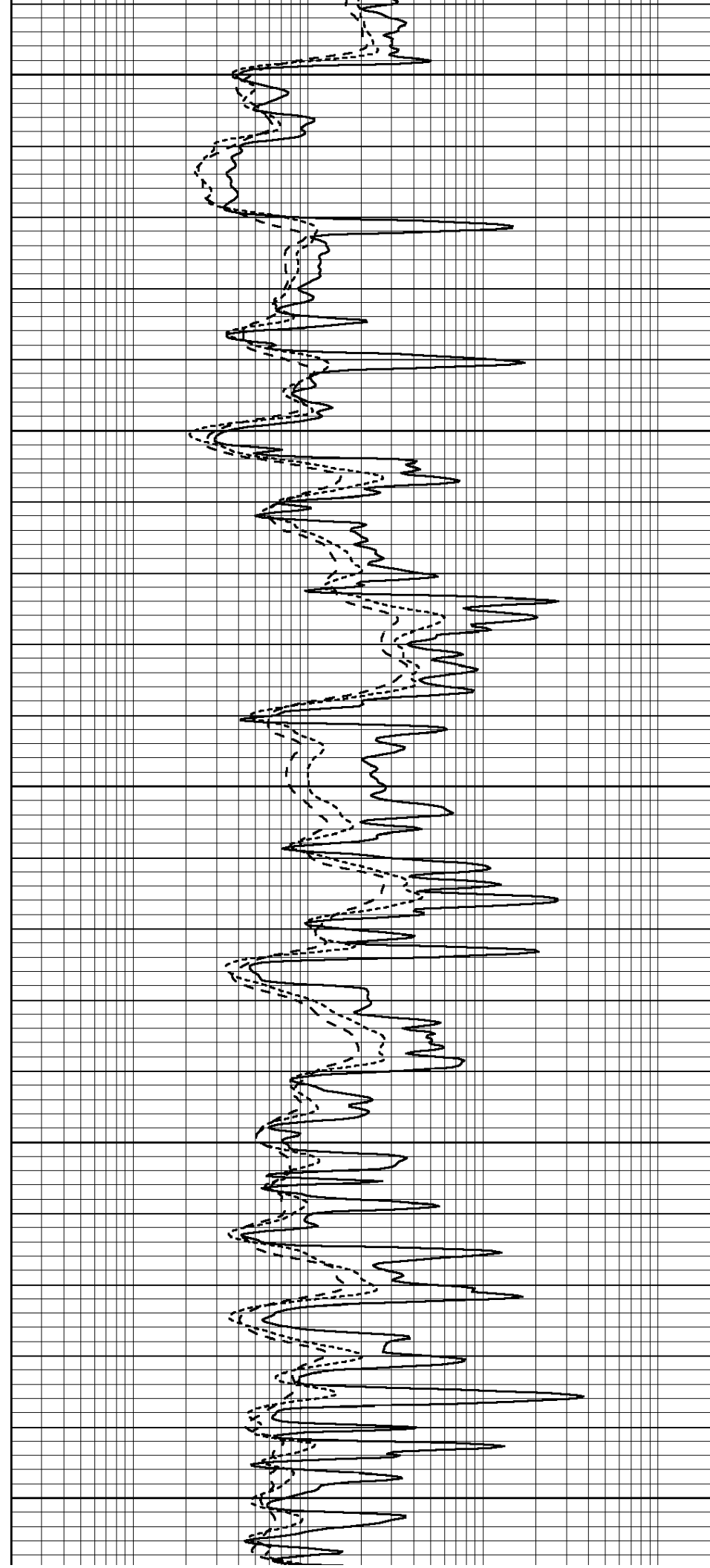
4850

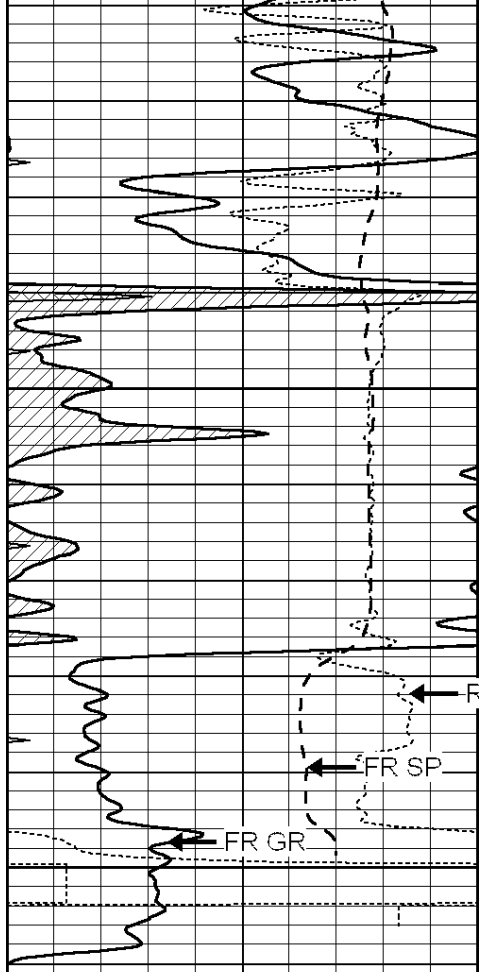
4900

4950

5000

5050

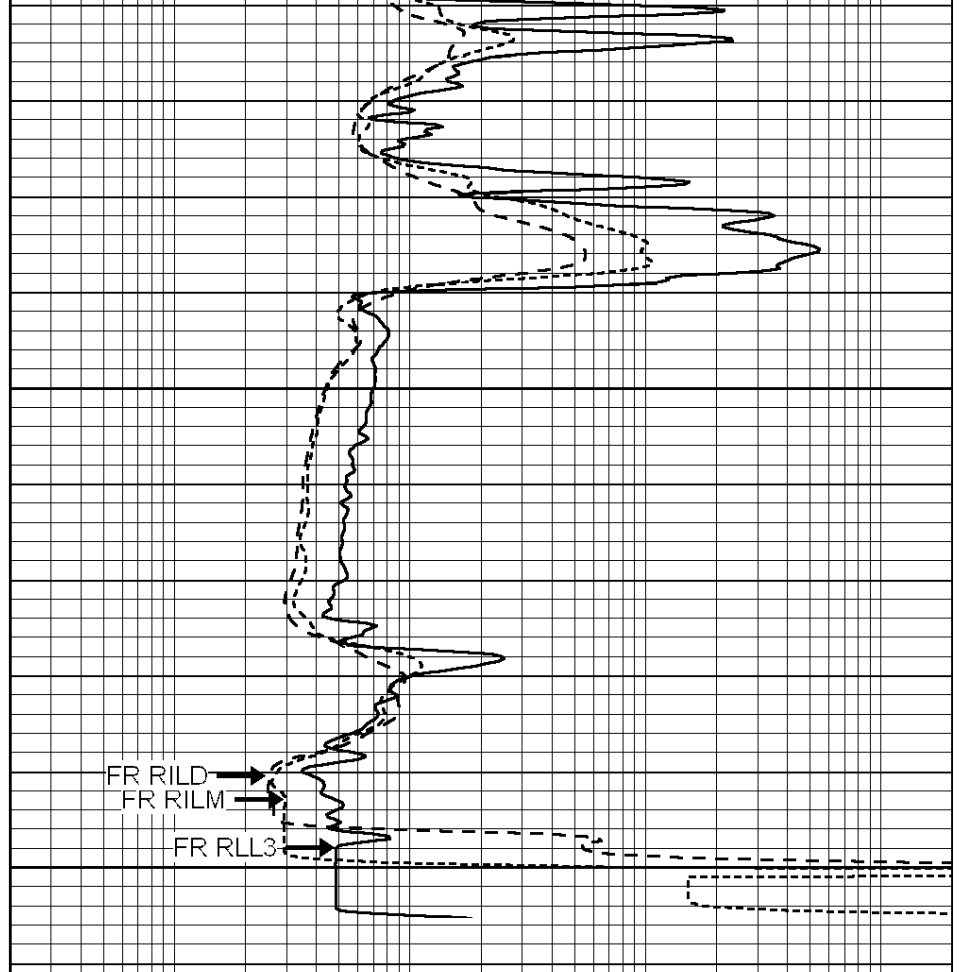




5100

LTD 5150

0	GAMMA RAY (GAPI)	150
-100	SP (mV)	100
-250	Rxo/Rt	50
0	MINMK	20



0.2	SHALLOW GUARD (Ohm-m)	2000
0.2	DEEP INDUCTION (Ohm-m)	2000
0.2	MEDIUM INDUCTION (Ohm-m)	2000

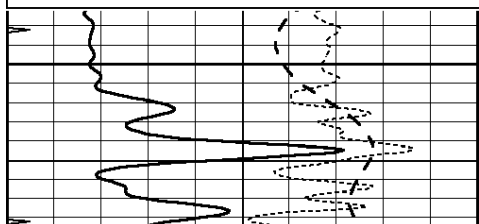


REPEAT SECTION

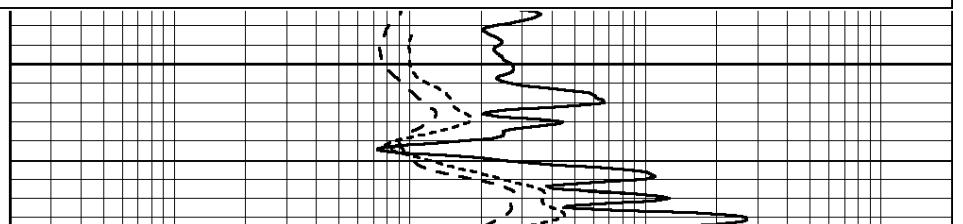
Database File: 011192pe.db
 Dataset Pathname: pass2.1
 Presentation Format: _dil
 Dataset Creation: Sun Jul 21 19:48:25 2013 by Calc SOC 120430
 Charted by: Depth in Feet scaled 1:240

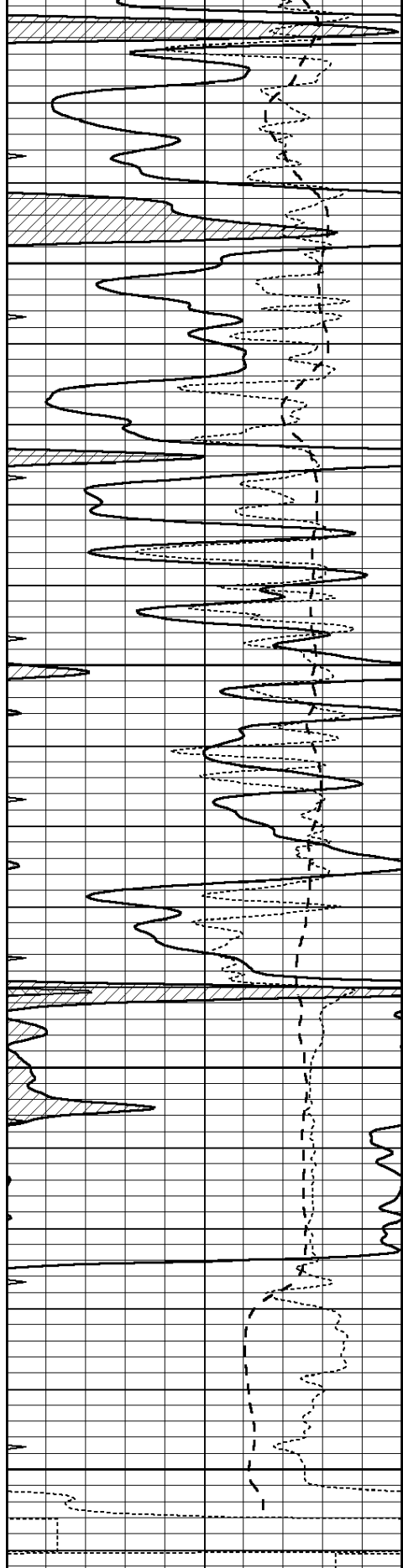
0	GAMMA RAY (GAPI)	150
-100	SP (mV)	100
-250	Rxo/Rt	50
0	MINMK	20

0.2	SHALLOW GUARD (Ohm-m)	2000
0.2	DEEP INDUCTION (Ohm-m)	2000
0.2	MEDIUM INDUCTION (Ohm-m)	2000



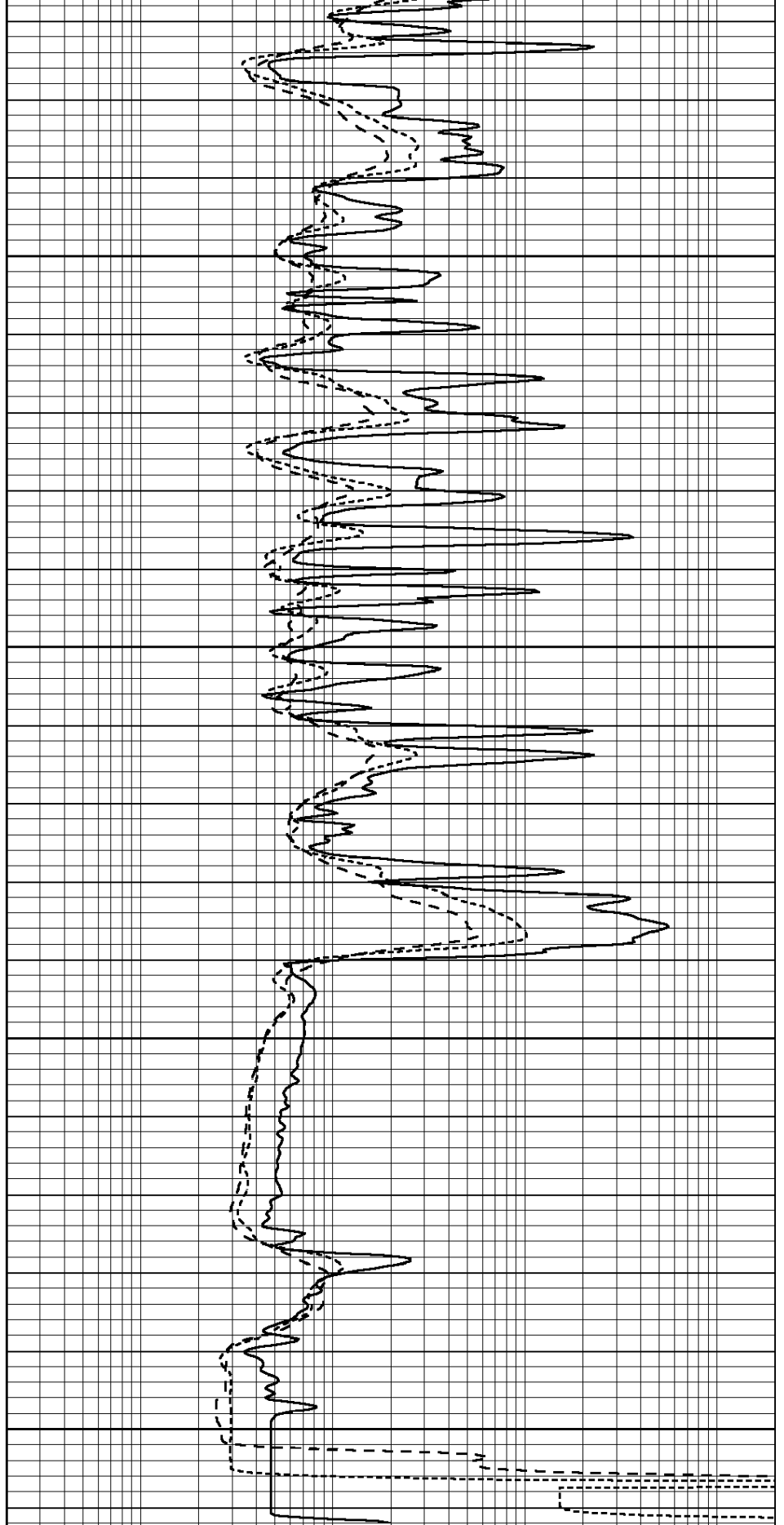
4950





0	GAMMA RAY (GAPI)	150
-100	SP (mV)	100
-250	Rxo/Rt	50
0	MINMK	20

5000
5050
5100
5150



0.2	SHALLOW GUARD (Ohm-m)	2000
0.2	DEEP INDUCTION (Ohm-m)	2000
0.2	MEDIUM INDUCTION (Ohm-m)	2000

Calibration Report

Database File: 011192pe.db
 Dataset Pathname: pass3.5
 Dataset Creation: Sun Jul 21 21:17:27 2013

Dual Induction Calibration Report

Serial-Model: PROBE9-DILG
 Surface Cal Performed: Thu Jul 11 13:14:55 2013
 Downhole Cal Performed: Mon Jul 28 12:02:56 2008
 After Survey Verification Performed: Mon Jul 28 12:02:56 2008

Surface Calibration

Loop:	Readings			References			Results	
	Air	Loop		Air	Loop		m	b
Deep	-0.014	0.629	V	0.000	400.000	mmho/m	621.923	-3.000
Medium	0.039	0.728	V	0.000	464.000	mmho/m	590.000	-9.000
Internal:	Zero	Cal		Zero	Cal		m	b
Deep	0.011	0.610	V	0.000	400.000	mmho/m	667.135	-7.256
Medium	0.005	0.712	V	0.000	464.000	mmho/m	655.677	-3.102

Downhole Calibration

	Readings			References			Results	
	Zero	Cal		Zero	Cal		m'	b'
Deep	0.000	0.000	mmho/m	14.508	388.384	mmho/m	1.000	0.000
Medium	0.000	0.000	mmho/m	166.367	504.400	mmho/m	1.000	0.000
LL3		7.500	V		1400.000	Ohm-m		
		0.000	V		20.000	Ohm-m		
		-7.200	V		4000.000	mmho-m		

After Survey Verification

	Readings			Targets			Results	
	Zero	Cal		Zero	Cal		m'	b'
Deep	0.000	0.000	mmho/m	0.000	0.000	mmho/m	0.000	0.000
Medium	0.000	0.000	mmho/m	0.000	0.000	mmho/m	0.000	0.000
LL3		1.000	Ohm-m		1.000	Ohm-m		
		0.000	Ohm-m		0.000	Ohm-m		
		1.000	mmho-m		1.000	mmho-m		

Litho Density Calibration Report

Serial: 001 Model: PRB

Master Calibration

Performed Tue May 28 08:54:22 2013

	Background	Magnesium	Aluminum	Sandstone	
Window 1	1890.3	12786.5	4236.7	13497.2	cps
Window 2	1764.1	11051.7	3765.5	11456.4	cps
Window 3	1442.8	5894.4	2376.2	5911.4	cps
Window 4	428.0	428.9	420.8	426.5	cps
Long Space	0.0	9287.6	2001.3	9692.3	cps
Short Space	3.2	3351.1	2186.8	3398.0	cps
Rho		1.7100	2.5900	1.3800	g/cc
Pe		0.0000	2.5700	1.5500	
Rib Angle	: 44.5	Rib Slope	: 0.981	Density/Spine Ratio	: 0.552
Spine Angle	: 74.5	Spine Slope	: 3.596	Spine Intercept	: -20.1

Before Survey Verification

Performed Wed Dec 31 18:00:00 1969

Window 1	0.0	0.0	0.0	0.0	cps
Window 2	0.0	0.0	0.0	0.0	cps
Window 3	0.0	0.0	0.0	0.0	cps
Window 4	0.0	0.0	0.0	0.0	cps
Long Space	0.0	0.0	0.0	0.0	cps
Short Space	0.0	0.0	0.0	0.0	cps
Measured Rho		0.0000	0.0000	0.0000	g/cc
Measured Correction		0.0000	0.0000	0.0000	g/cc
Measured Pe			0.0000	0.0000	

After Survey Verification

Performed Wed Dec 31 18:00:00 1969

Window 1	0.0	0.0	0.0	0.0	cps
Window 2	0.0	0.0	0.0	0.0	cps
Window 3	0.0	0.0	0.0	0.0	cps
Window 4	0.0	0.0	0.0	0.0	cps
Long Space	0.0	0.0	0.0	0.0	cps
Short Space	0.0	0.0	0.0	0.0	cps
Measured Rho		0.0000	0.0000	0.0000	g/cc
Measured Correction		0.0000	0.0000	0.0000	g/cc
Measured Pe			0.0000	0.0000	

Compensated Neutron Calibration Report

Serial Number: 070808
 Tool Model: Probe

PRE-SURVEY VERIFICATION

Detector	Readings	Measured	Target
Short Space	cps		
Long Space	cps	pu	pu

POST-SURVEY VERIFICATION

Detector	Readings	Measured	Target
Short Space	cps		
Long Space	cps	pu	pu

Gamma Ray Calibration Report

Serial Number: 070559
 Tool Model: OPEN_GR
 Performed: Wed Jun 12 18:25:42 2013

Calibrator Value: 1.0 GAPI

Background Reading: 0.0 cps
 Calibrator Reading: 1.0 cps

Sensitivity: 0.3500 GAPI/cps