



**COMPLETION
& PRODUCTION
SERVICES CO.**

**COMPENSATED
DENSITY / NEUTRON
PE LOG**

Company VINCENT OIL CORPORATION
Well SANKO FARMS #2-10
Field
County FORD
State KANSAS

Company VINCENT OIL CORPORATION
Well SANKO FARMS #2-10
Field
County FORD State KANSAS

Location: API # : 15-057-20903-0000
880' FSL & 880' FEL

Permanent Datum GROUND LEVEL Elevation 2461
Log Measured From KELLY BUSHING 12' A.G.L.
Drilling Measured From KELLY BUSHING

SEC 10 TWP 28S RGE 23W

Other Services
DIL/MEL
SONIIC

Elevation
K.B. 2473
D.F. 2471
G.L. 2461

Date	7/21/13
Run Number	ONE
Depth Driller	5152
Depth Logger	5150
Bottom Logged Interval	5126
Top Log Interval	4150
Casing Driller	8 5/8"@654'
Casing Logger	652'
Bit Size	7 7/8"
Type Fluid in Hole	CHEMICAL MUD
Density / Viscosity	9.35/49
pH / Fluid Loss	10.5/11.2
Source of Sample	FLOWLINE
Rim @ Meas. Temp	0.55@90F
Rmf @ Meas. Temp	0.41@90F
Rmc @ Meas. Temp	0.66@90F
Source of Rmf / Rmc	MEASUREMENT
Rim @ BHT	0.39@126F
Time Circulation Stopped	22 HOURS
Time Logger on Bottom	
Maximum Recorded Temperature	126F
Equipment Number	4854
Location	HAYS, KANSAS
Recorded By	JEFF GRONEMEG
Witnessed By	KEN LeBLANC

<<< Fold Here >>>

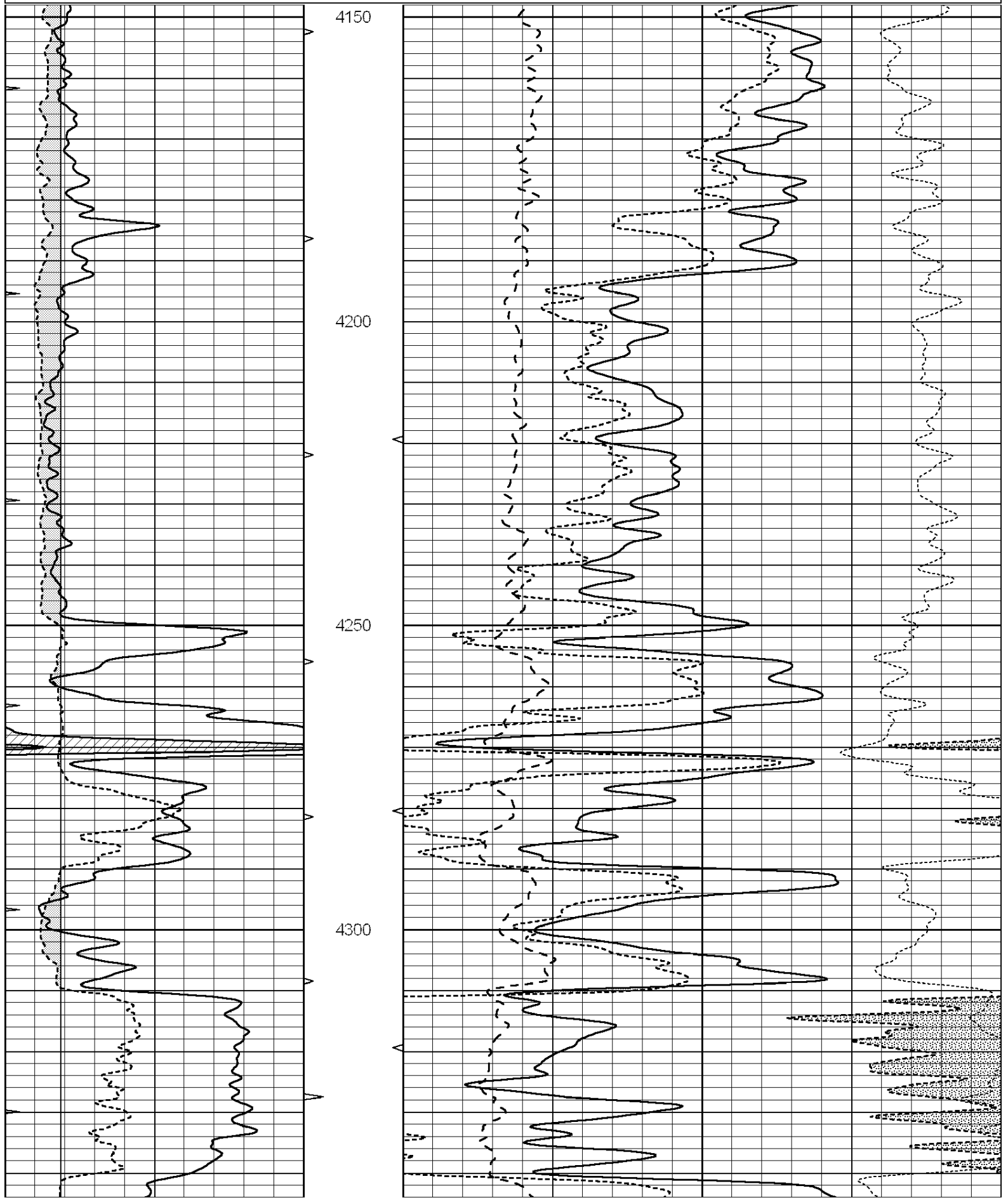
All interpretations are opinions based on inferences from electrical or other measurements and we cannot and do not guarantee the accuracy or correctness of any interpretation, and we shall not, except in the case of gross or willful negligence on our part, be liable or responsible for any loss, costs, damages, or expenses incurred or sustained by anyone resulting from any interpretation made by any of our officers, agents or employees. These interpretations are also subject to our general terms and conditions set out in our current Price Schedule.

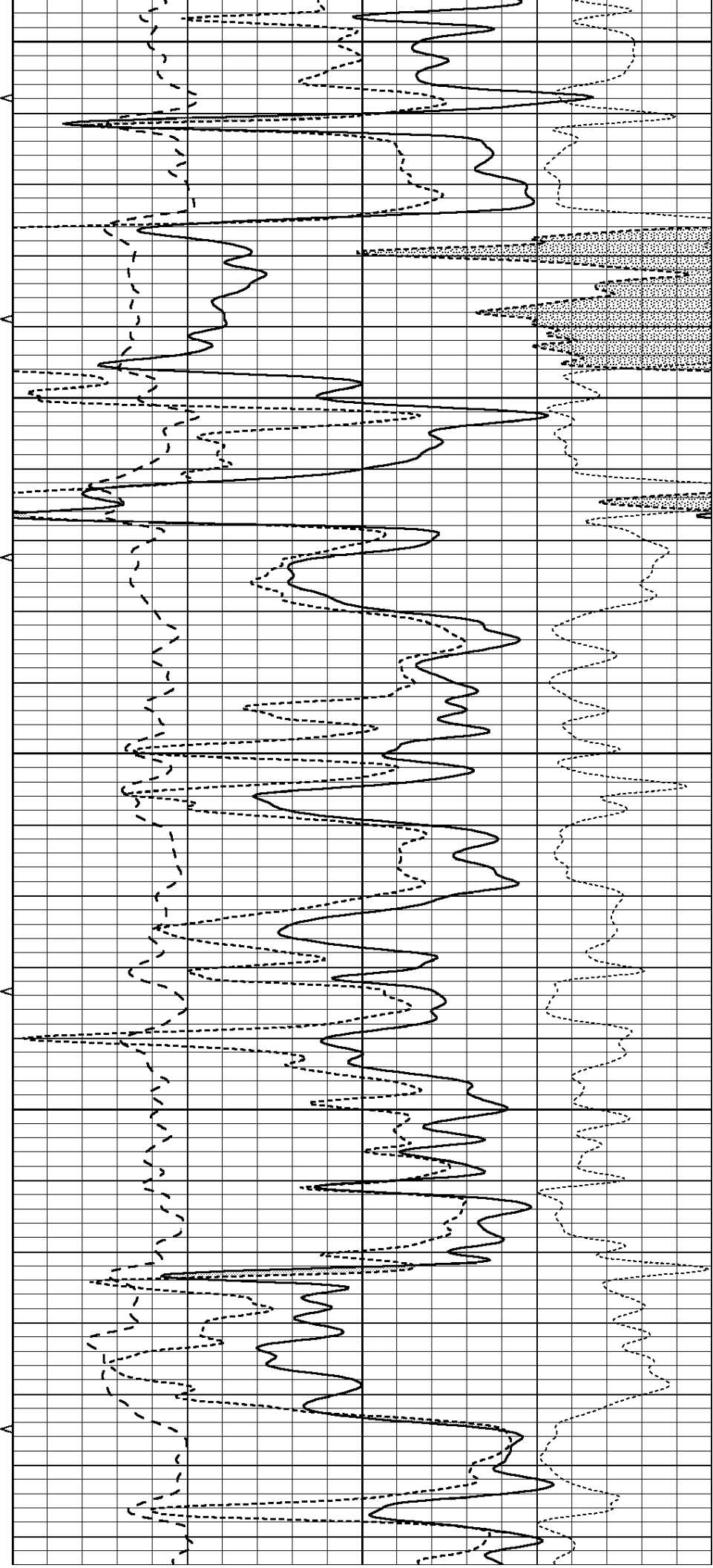
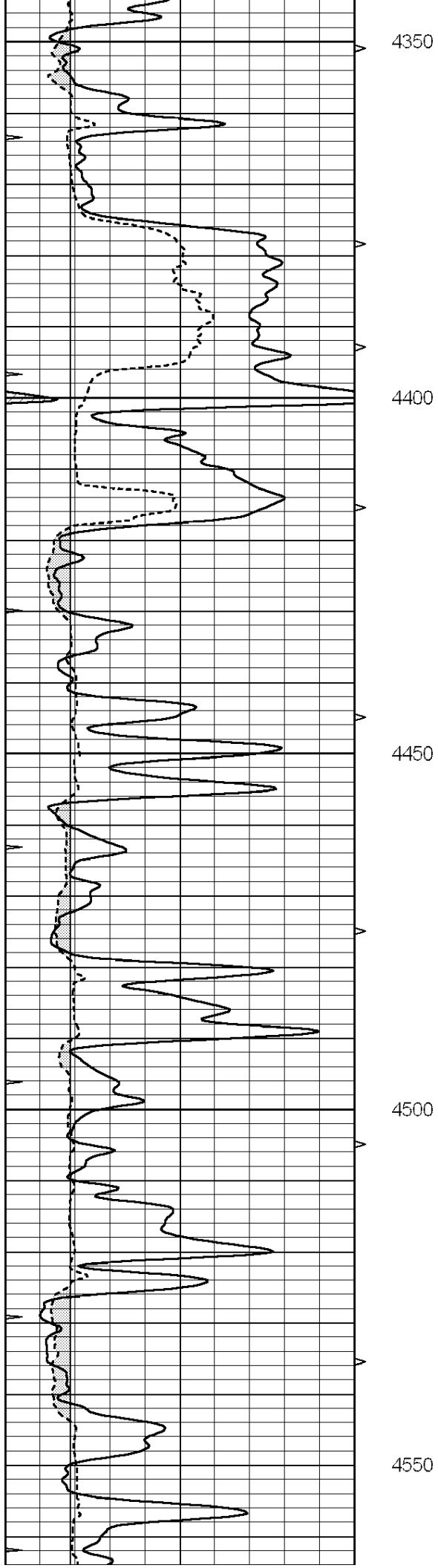
Comments

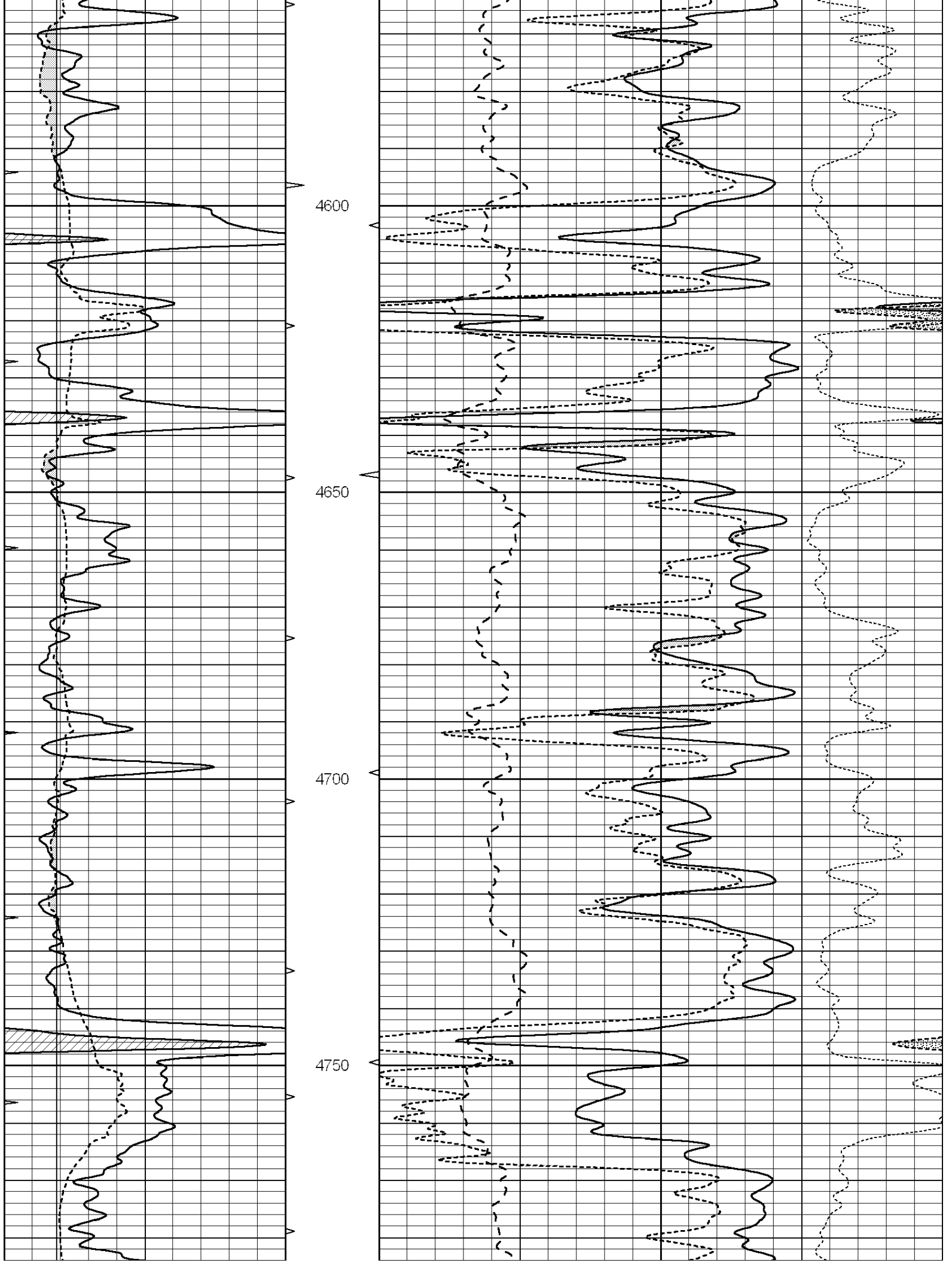
THANK YOU FOR USING "NABORS" HAYS, KANSAS (785) 628-6395
DIRECTIONS
FORD, KS. & SADDLE RD., WEST 2 MILES TO RD 123 - 2 MILES SOUTH
1 1/4 MILES WEST - NORTH INTO

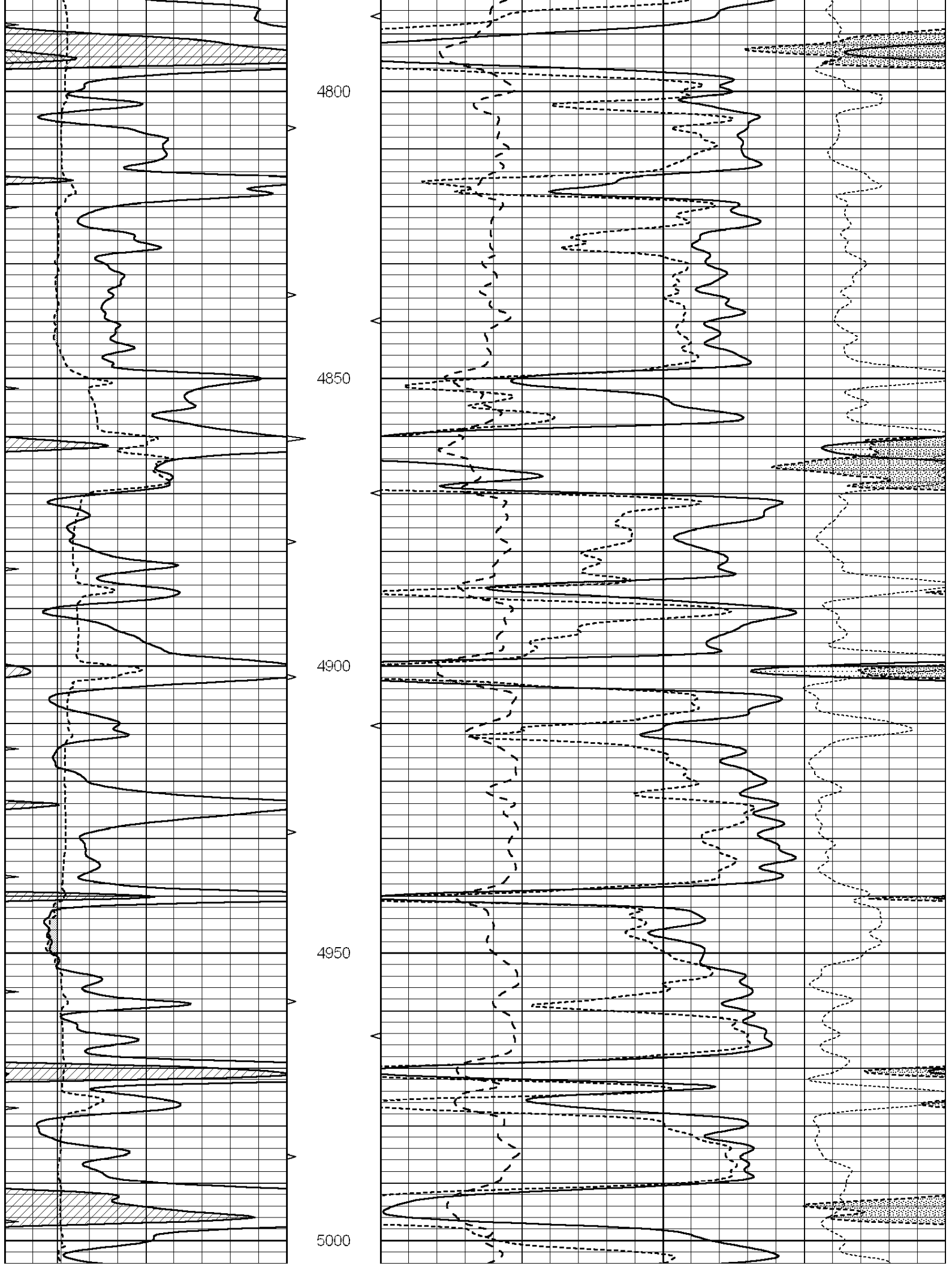
Database File: 011192pe.db
Dataset Pathname: pass3.5
Presentation Format: _ldt_neu
Dataset Creation: Sun Jul 21 21:17:27 2013
Charted by: Depth in Feet scaled 1:240

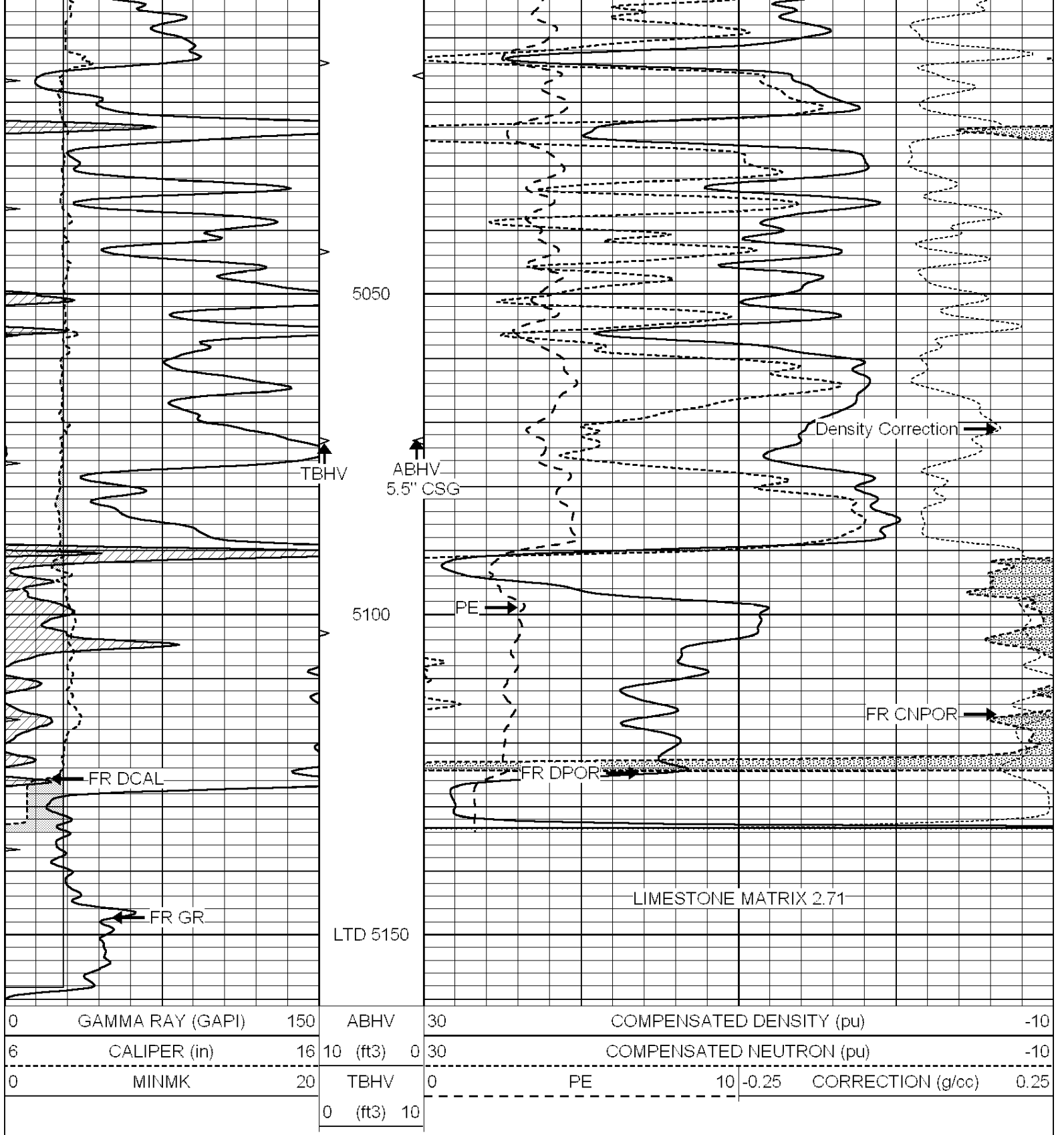
0	GAMMA RAY (GAPI)	150	ABHV	30	COMPENSATED DENSITY (pu)		-10		
6	CALIPER (in)	16	10 (ft3)	0	30	COMPENSATED NEUTRON (pu)		-10	
0	MINMK	20	TBHV	0	PE	10	-0.25	CORRECTION (g/cc)	0.25
			0 (ft3)	10					







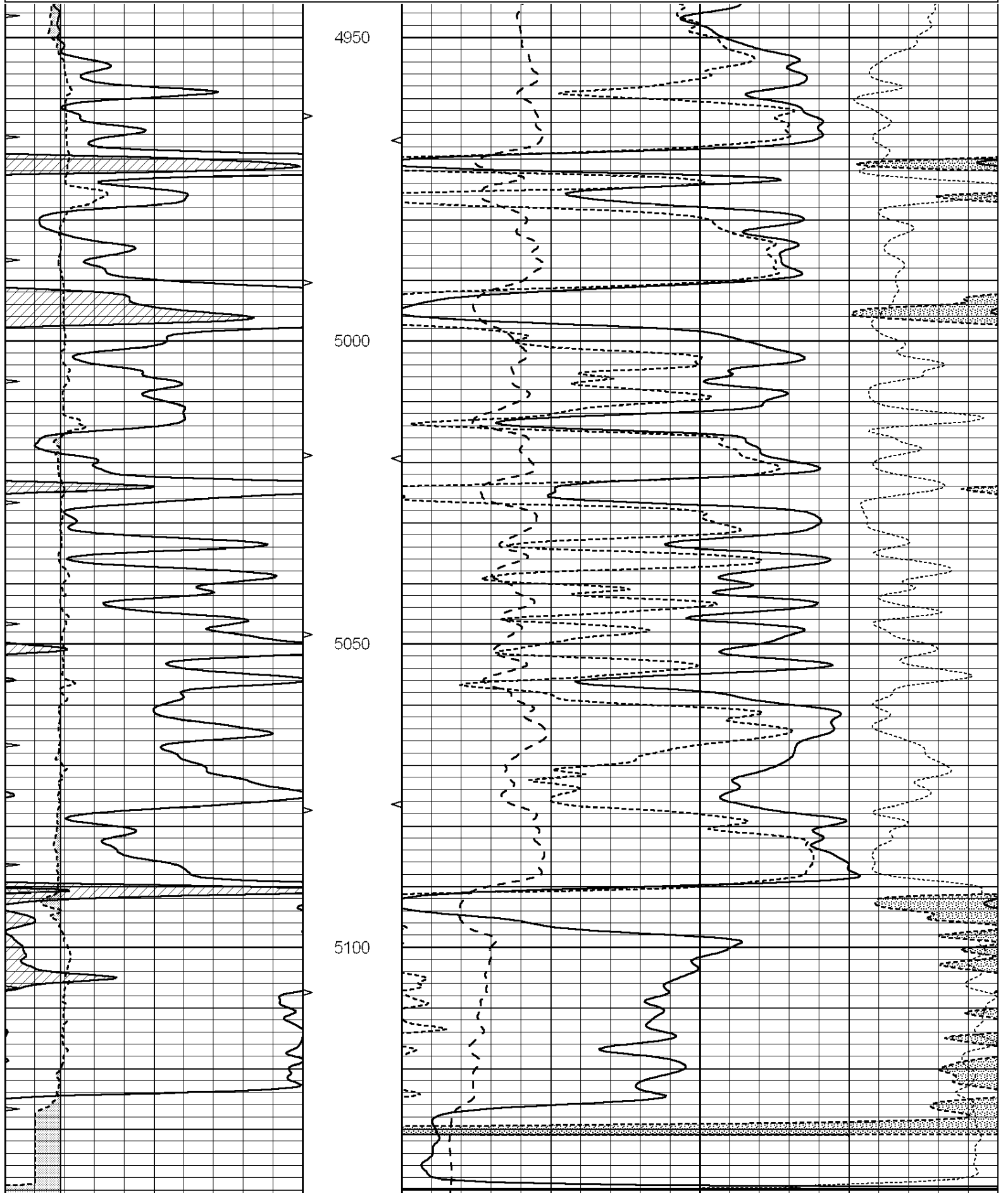




REPEAT SECTION

Database File: 011192pe.db
 Dataset Pathname: pass2.1
 Presentation Format: _ldt_neu
 Dataset Creation: Sun Jul 21 19:48:25 2013 by Calc SOC 120430
 Charted by: Depth in Feet scaled 1:240

0	GAMMA RAY (GAPI)	150	ABHV	30	COMPENSATED DENSITY (pu)		-10
6	CALIPER (in)	16	10 (ft3)	0	COMPENSATED NEUTRON (pu)		-10
0	MINMK	20	TBHV	0	PE	10 -0.25	CORRECTION (g/cc) 0.25
			0 (ft3)	10			



Window 1	1890.3	12786.5	4236.7	13497.2	cps
Window 2	1764.1	11051.7	3765.5	11456.4	cps
Window 3	1442.8	5894.4	2376.2	5911.4	cps
Window 4	428.0	428.9	420.8	426.5	cps
Long Space	0.0	9287.6	2001.3	9692.3	cps
Short Space	3.2	3351.1	2186.8	3398.0	cps
Rho		1.7100	2.5900	1.3800	g/cc
Pe		0.0000	2.5700	1.5500	

Rib Angle	: 44.5	Rib Slope	: 0.981	Density/Spine Ratio	: 0.552
Spine Angle	: 74.5	Spine Slope	: 3.596	Spine Intercept	: -20.1

Before Survey Verification

Performed Wed Dec 31 18:00:00 1969

Window 1	0.0	0.0	0.0	0.0	cps
Window 2	0.0	0.0	0.0	0.0	cps
Window 3	0.0	0.0	0.0	0.0	cps
Window 4	0.0	0.0	0.0	0.0	cps
Long Space	0.0	0.0	0.0	0.0	cps
Short Space	0.0	0.0	0.0	0.0	cps
Measured Rho		0.0000	0.0000	0.0000	g/cc
Measured Correction		0.0000	0.0000	0.0000	g/cc
Measured Pe			0.0000	0.0000	

After Survey Verification

Performed Wed Dec 31 18:00:00 1969

Window 1	0.0	0.0	0.0	0.0	cps
Window 2	0.0	0.0	0.0	0.0	cps
Window 3	0.0	0.0	0.0	0.0	cps
Window 4	0.0	0.0	0.0	0.0	cps
Long Space	0.0	0.0	0.0	0.0	cps
Short Space	0.0	0.0	0.0	0.0	cps
Measured Rho		0.0000	0.0000	0.0000	g/cc
Measured Correction		0.0000	0.0000	0.0000	g/cc
Measured Pe			0.0000	0.0000	

Compensated Neutron Calibration Report

Serial Number: 070808
Tool Model: Probe

PRE-SURVEY VERIFICATION

Detector	Readings	Measured	Target
Short Space	cps		
Long Space	cps	pu	pu

POST-SURVEY VERIFICATION

Detector	Readings	Measured	Target
Short Space	cps		
Long Space	cps	pu	pu

Gamma Ray Calibration Report

Serial Number: 070559
Tool Model: OPEN_GR
Performed: Wed Jun 12 18:25:42 2013

Calibrator Value: 1.0 GAPI

Background Reading:

0.0

cps

Calibrator Reading:

1.0

cps

Sensitivity:

0.3500

GAPI/cps