



**COMPLETION
& PRODUCTION
SERVICES CO.**

**MICRO
LOG**

Company VINCENT OIL CORPORATION
Well SANKO FARMS #2-10
Field WILDCAT
County FORD
State KANSAS

Company VINCENT OIL CORPORATION
Well SANKO FARMS #2-10
Field WILDCAT
County FORD State KANSAS

Location: API # : 15-057-20901-0000
880' FSL & 880' FEL
SEC 10 TWP 28S RGE 23W
Permanent Datum GROUND LEVEL Elevation 2461
Log Measured From KELLY BUSHING 12' A.G.L.
Drilling Measured From KELLY BUSHING
Other Services
CDL/CNL/PE
DIL/SON
Elevation
K.B. 2473
D.F. 2471
G.L. 2461

Date	7/21/13		
Run Number	TWO		
Depth Driller	5152		
Depth Logger	5150		
Bottom Logged Interval	5129		
Top Log Interval	4150		
Casing Driller	8 5/8"@654'		
Casing Logger	652'		
Bit Size	7 7/8"		
Type Fluid in Hole	CHEMICAL MUD	CHLORIDES 8,400 PPM	
Density / Viscosity	9.35/49		
pH / Fluid Loss	10.5/11.2		
Source of Sample	FLOWLINE		
Rim @ Meas. Temp	0.55@90F		
Rmf @ Meas. Temp	0.41@90F		
Rmc @ Meas. Temp	0.66@90F		
Source of Rmf / Rmc	MEASUREMENT		
Rim @ BHT	0.39@126F		
Time Circulation Stopped	22 HOURS		
Time Logger on Bottom			
Maximum Recorded Temperature	126F		
Equipment Number	4854		
Location	HAYS, KANSAS		
Recorded By	JEFF GRONEMEG		
Witnessed By	KEN LeBLANC		

<<< Fold Here >>>

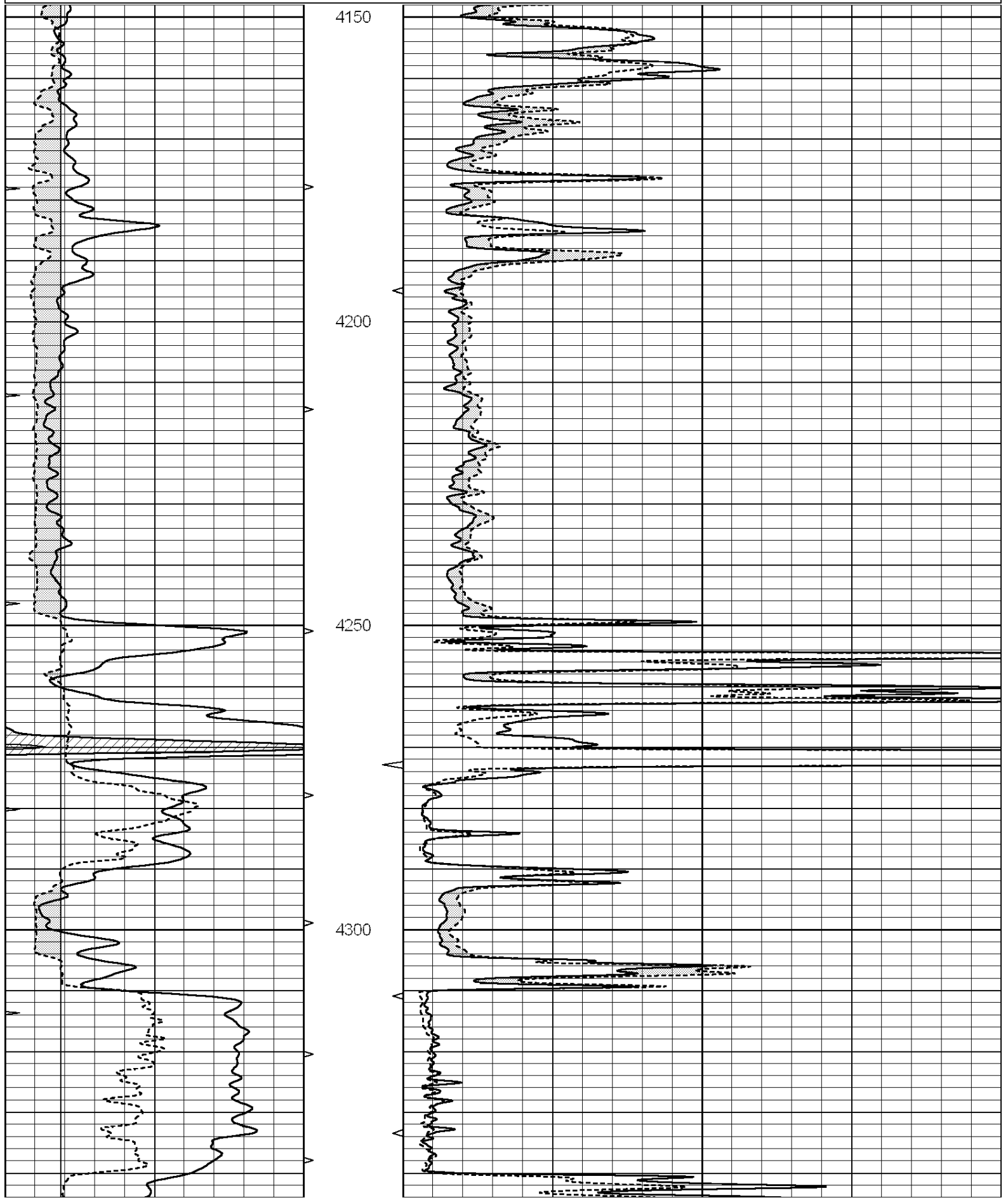
All interpretations are opinions based on inferences from electrical or other measurements and we cannot and do not guarantee the accuracy or correctness of any interpretation, and we shall not, except in the case of gross or willful negligence on our part, be liable or responsible for any loss, costs, damages, or expenses incurred or sustained by anyone resulting from any interpretation made by any of our officers, agents or employees. These interpretations are also subject to our general terms and conditions set out in our current Price Schedule.

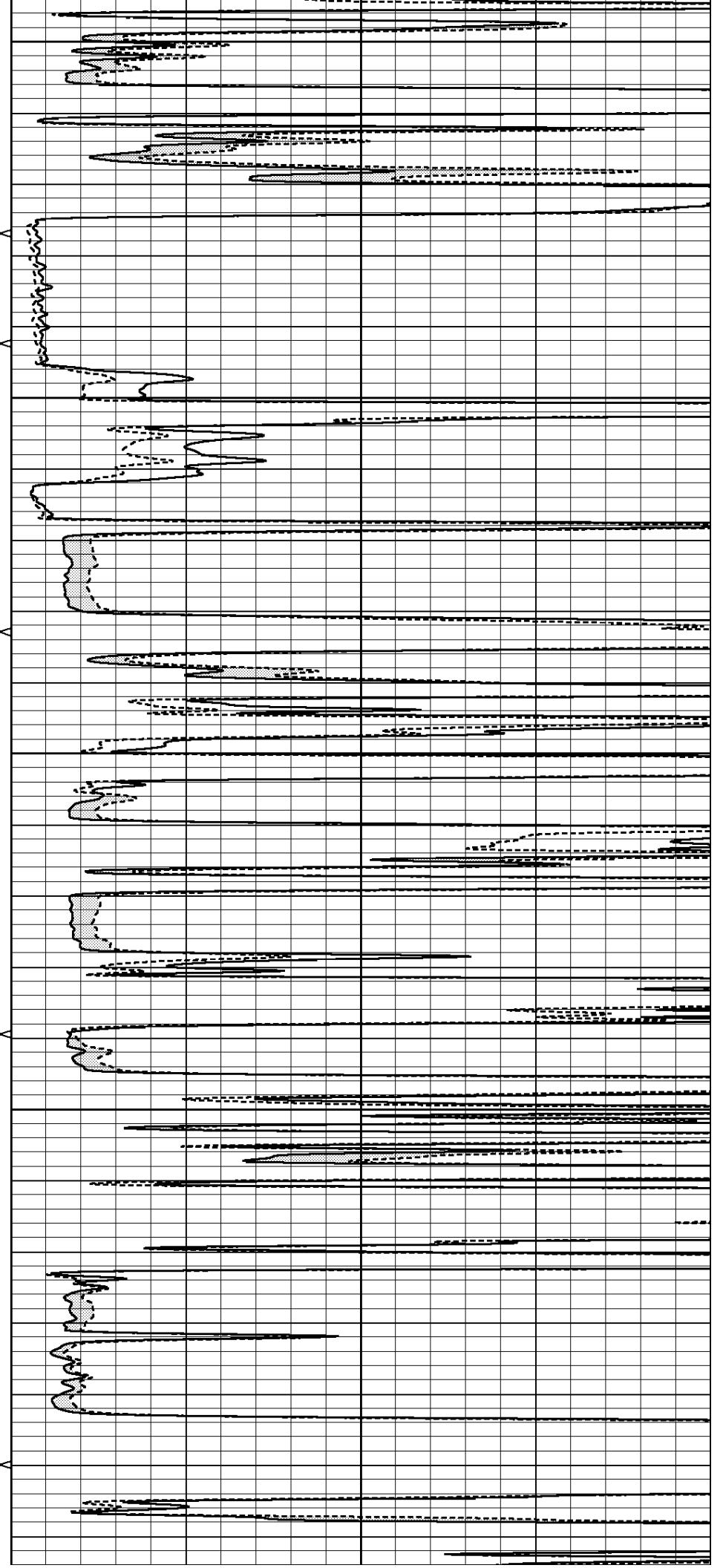
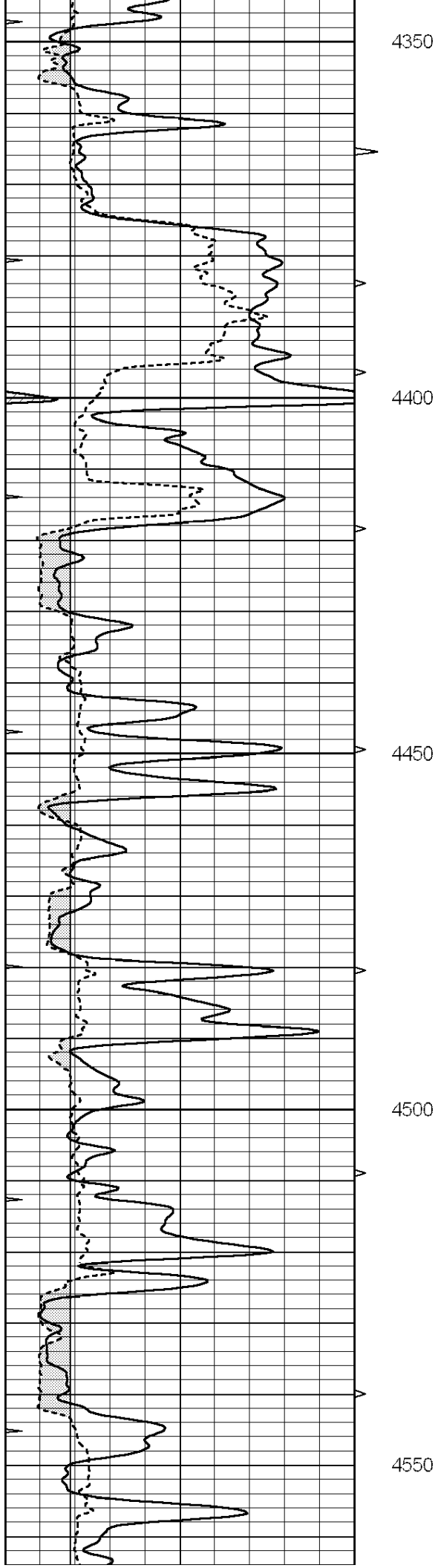
Comments

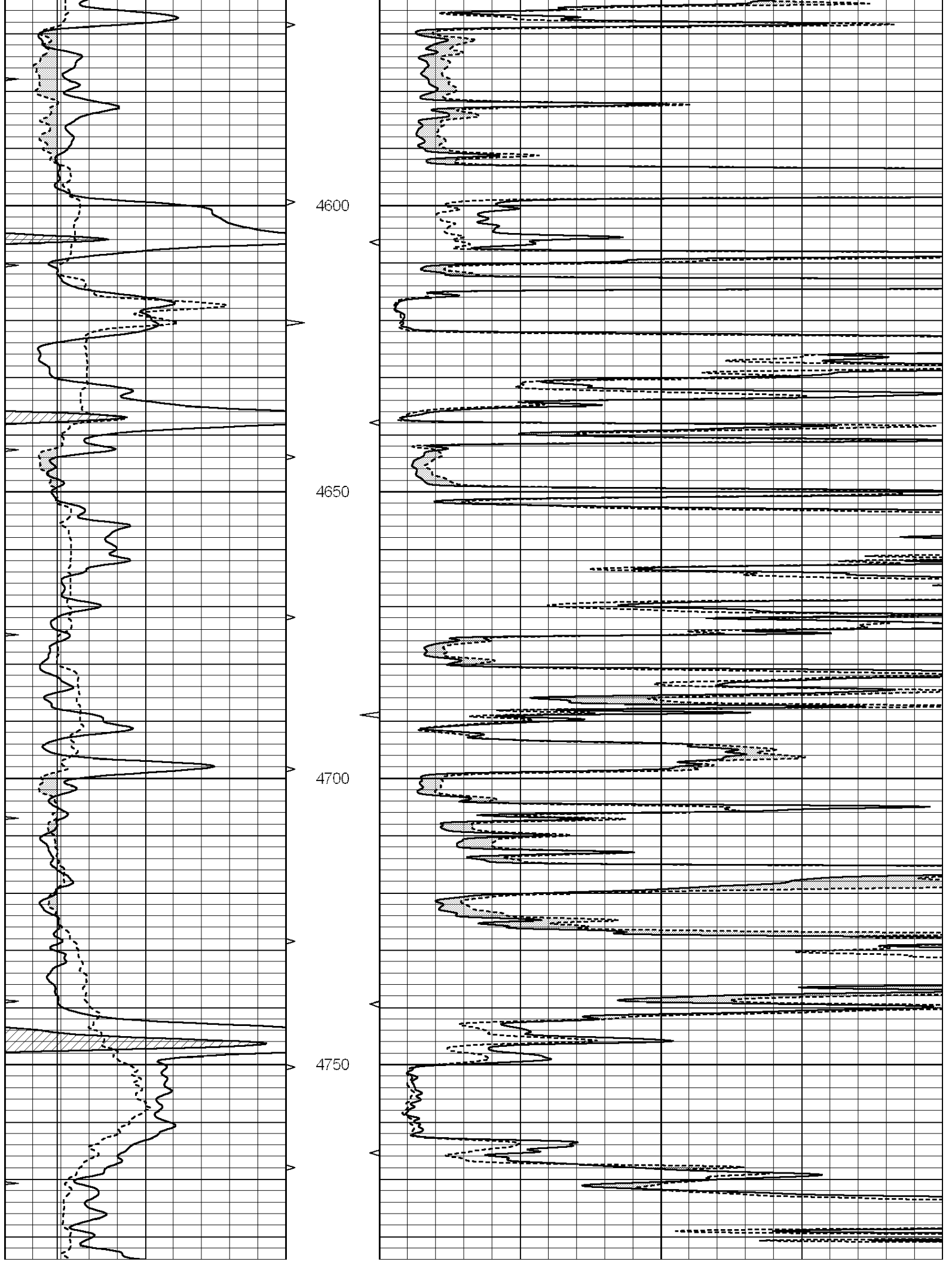
THANK YOU FOR USING "NABORS" HAYS, KANSAS (785) 628-6395
DIRECTIONS
FORD, KS. & SADDLE RD., WEST 2 MILES TO RD 123 - 2 MILES SOUTH
1 1/4 MILES WEST - NORTH INTO

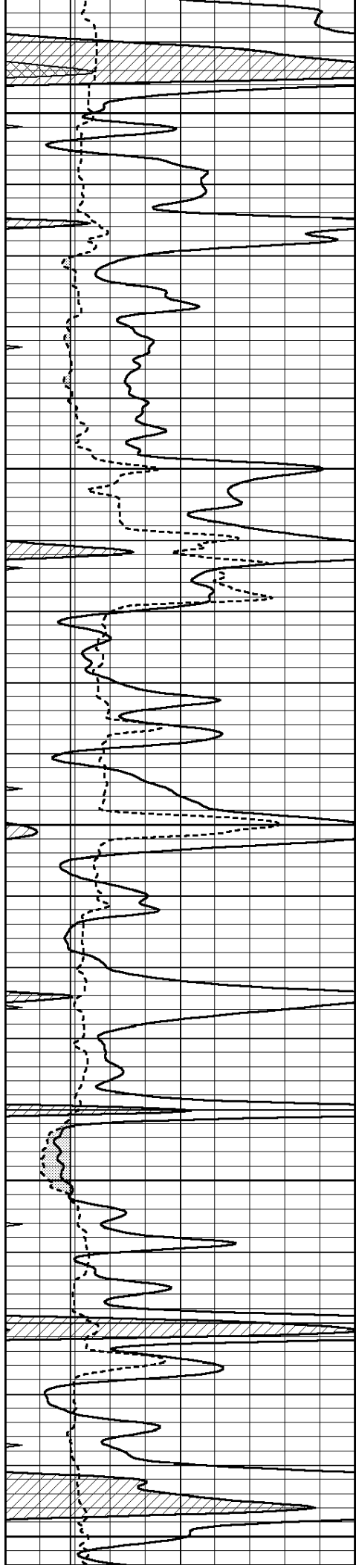
Database File: 011192pe.db
Dataset Pathname: pass9.1.1
Presentation Format: _micro
Dataset Creation: Sun Jul 21 23:28:54 2013
Charted by: Depth in Feet scaled 1:240

0	GAMMA RAY (GAPI)	150	ABHV	0	MEL1.5 (Ohm-m)	40
6	CALIPER (in)	16	10 (ft3)	0	MEL2.0 (Ohm-m)	40
0	MINMK	20	TBHV			
			0 (ft3)	10		









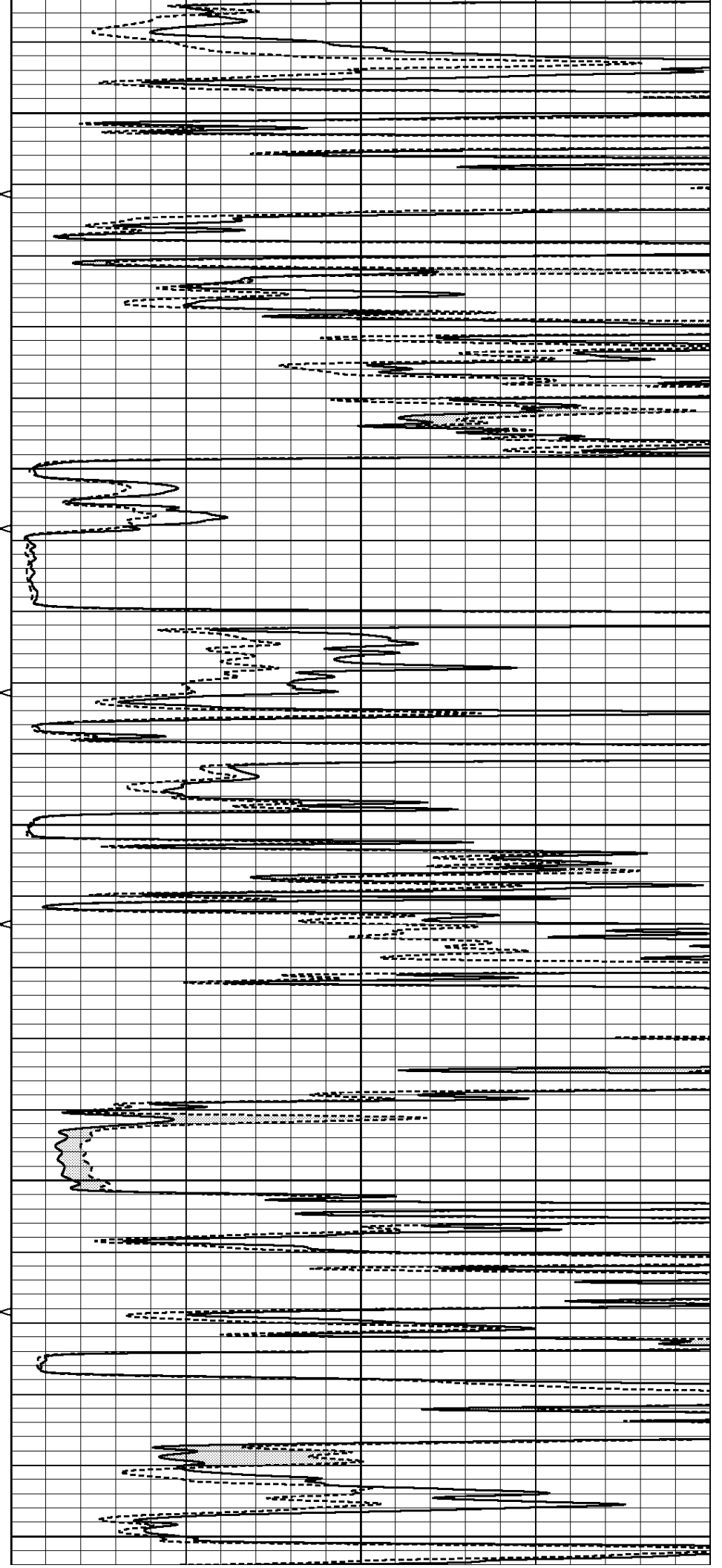
4800

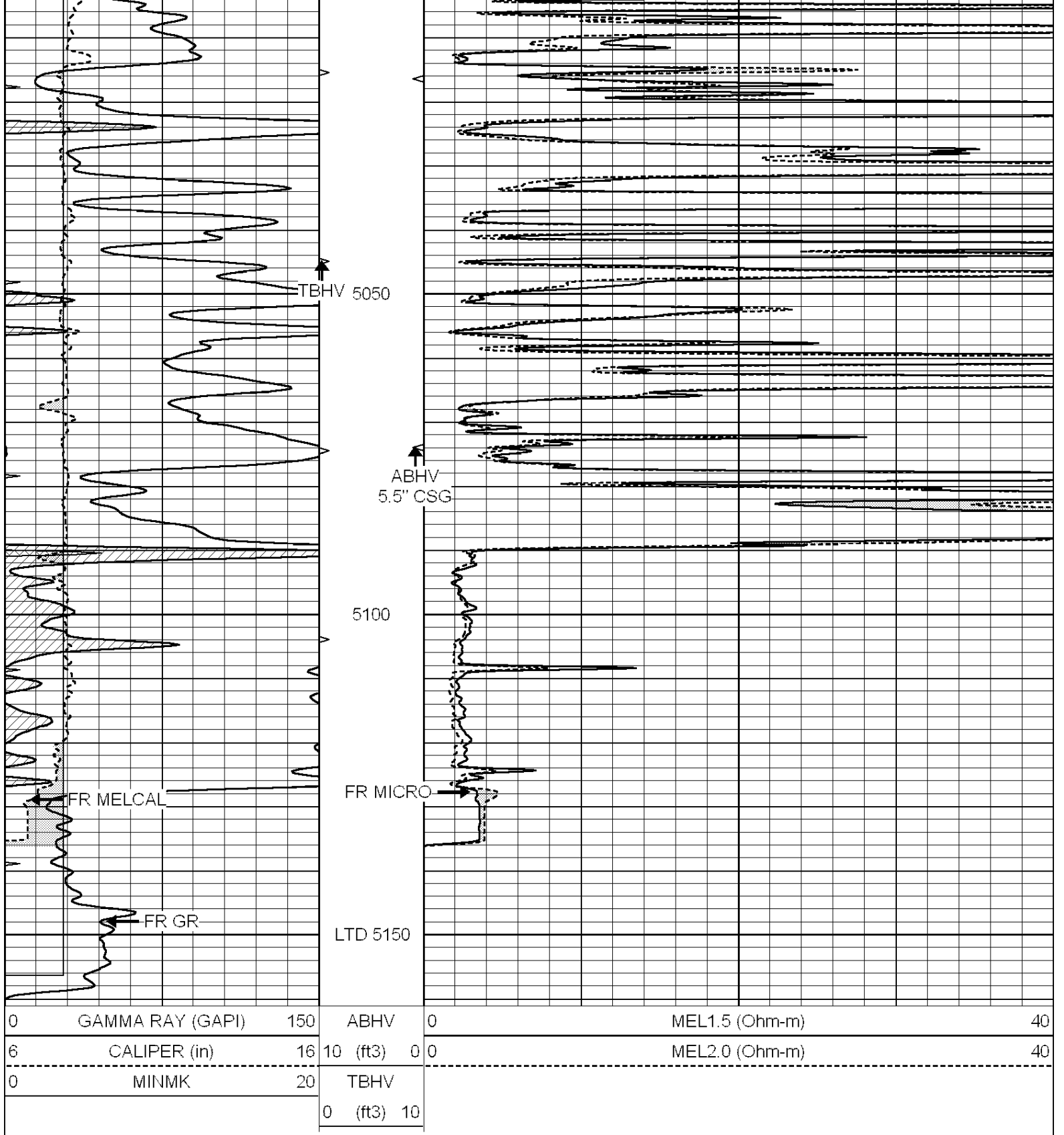
4850

4900

4950

5000





REPEAT SECTION

Database File: 011192pe.db
 Dataset Pathname: pass8.3
 Presentation Format: _micro
 Dataset Creation: Sun Jul 21 23:09:17 2013 by Calc SOC 120430
 Charted by: Depth in Feet scaled 1:240

0	GAMMA RAY (GAPI)	150	ABHV	0	MEL1.5 (Ohm-m)	40
6	CALIPER (in)	16	10 (ft3)	0	MEL2.0 (Ohm-m)	40
0	MINMK	20	TBHV			
			0 (ft3)	10		

