



**SUPERIOR
Hays,
Kansas**

**MICRO
LOG**

Company **MULL DRILLING COMPANY, INC.**
Well **BERNBECK #1-20**
Field
County **TREGO** State **KANSAS**

Company **MULL DRILLING CO., INC.**
Well **BERNBECK #1-20**
Field
County **TREGO**
State **KANSAS**

Location: **API # : 15-195-22723**
1350' FSL & 1075' FWL
SEC 20 TWP 15S RGE 23W
Permanent Datum **GROUND LEVEL** Elevation **2379**
Log Measured From **KELLY BUSHING 5' A.G.L.**
Drilling Measured From **KELLY BUSHING**
Other Services
CDL/CNL/PE
DIL/SONIC
Elevation
K.B. 2384
D.F.
G.L. 2379

Date	8-22-11
Run Number	TWO
Depth Driller	4473
Depth Logger	4474
Bottom Logged Interval	4457
Top Log Interval	3600
Casing Driller	215
Casing Logger	215
Bit Size	7.875
Type Fluid in Hole	CHEMICAL MUD
Density / Viscosity	9.3 / 55
pH / Fluid Loss	10.5 / 7.2
Source of Sample	FLOWLINE
Rm @ Meas. Temp	0.80 @ 94F
Rmf @ Meas. Temp	0.60 @ 94F
Rmc @ Meas. Temp	0.96 @ 94F
Source of Rmf / Rmc	MEASURED
Rm @ BHT	.630 @ 119F
Time Circulation Stopped	2 HOURS
Time Logger on Bottom	4:15 A.M.
Maximum Recorded Temperature	119F
Equipment Number	860
Location	HAYS, KS.
Recorded By	RUPP
Witnessed By	LARRY FRIEND

<<< Fold Here >>>

All interpretations are opinions based on inferences from electrical or other measurements and we cannot and do not guarantee the accuracy or correctness of any interpretation, and we shall not, except in the case of gross or willful negligence on our part, be liable or responsible for any loss, costs, damages, or expenses incurred or sustained by anyone resulting from any interpretation made by any of our officers, agents or employees. These interpretations are also subject to our general terms and conditions set out in our current Price Schedule.

Comments

SUPERIOR WELL SERVICES
785-628-6395
THANK YOU FOR YOUR BUSINESS
DIRECTIONS: RANSOM JCT. OF #4 & #283, 5N, 1/8W, N INTO.



**SUPERIOR
Hays,
Kansas**

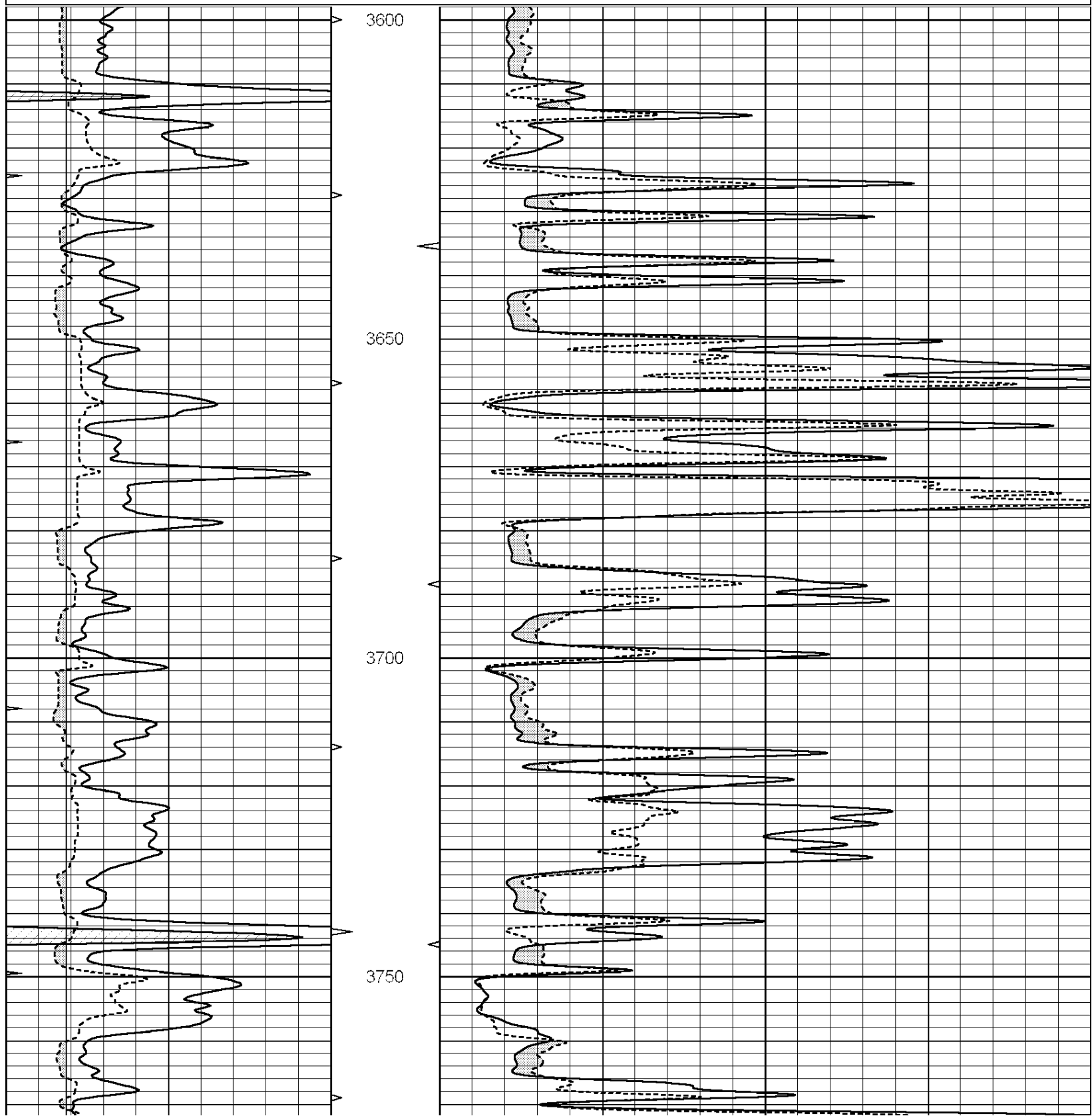
MAIN SECTION

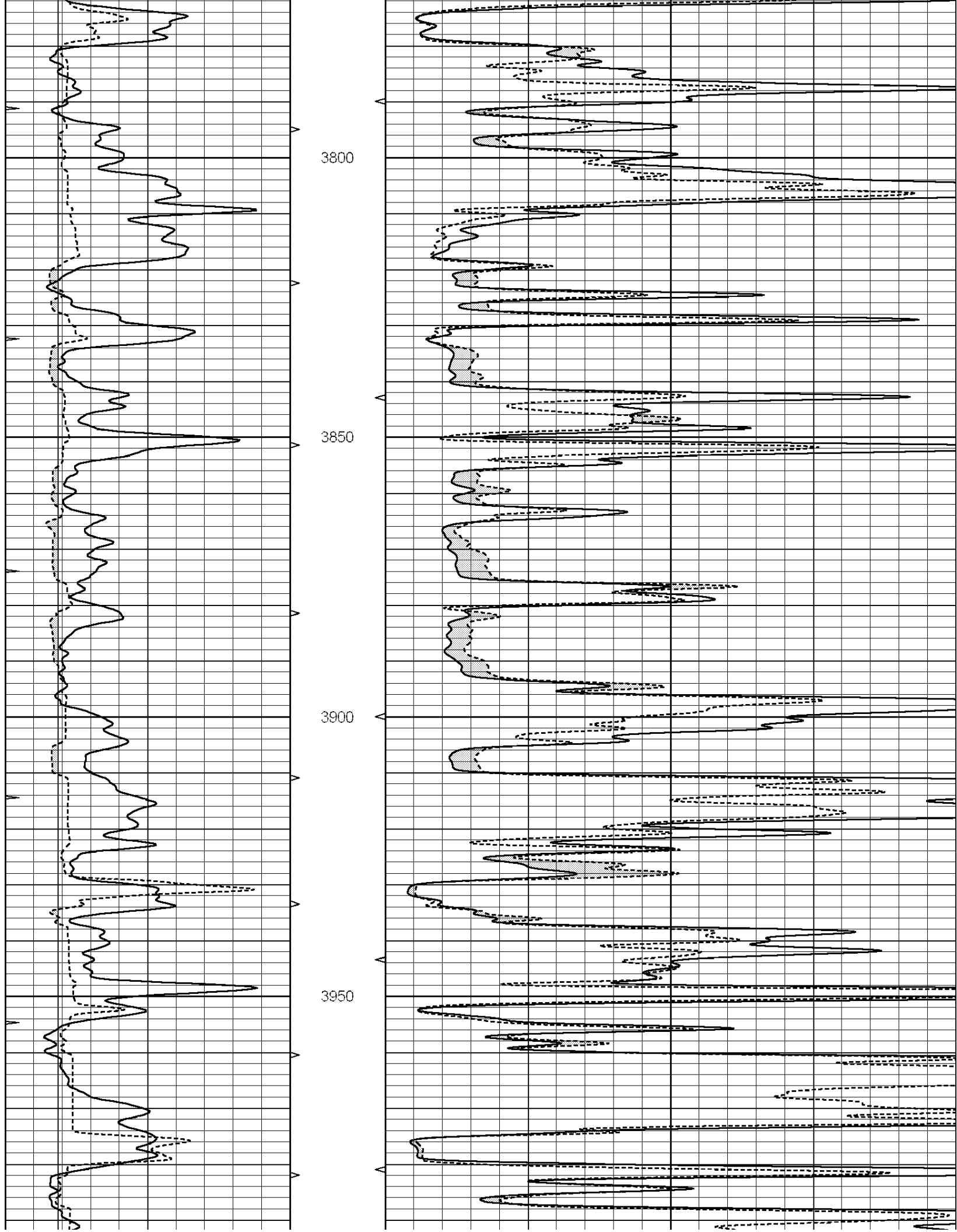
Database File: 007350pdn.db
Dataset Pathname: pass5.A
Presentation Format: micro
Dataset Creation: Mon Aug 22 08:10:18 2011
Charted by: Depth in Feet scaled 1:240

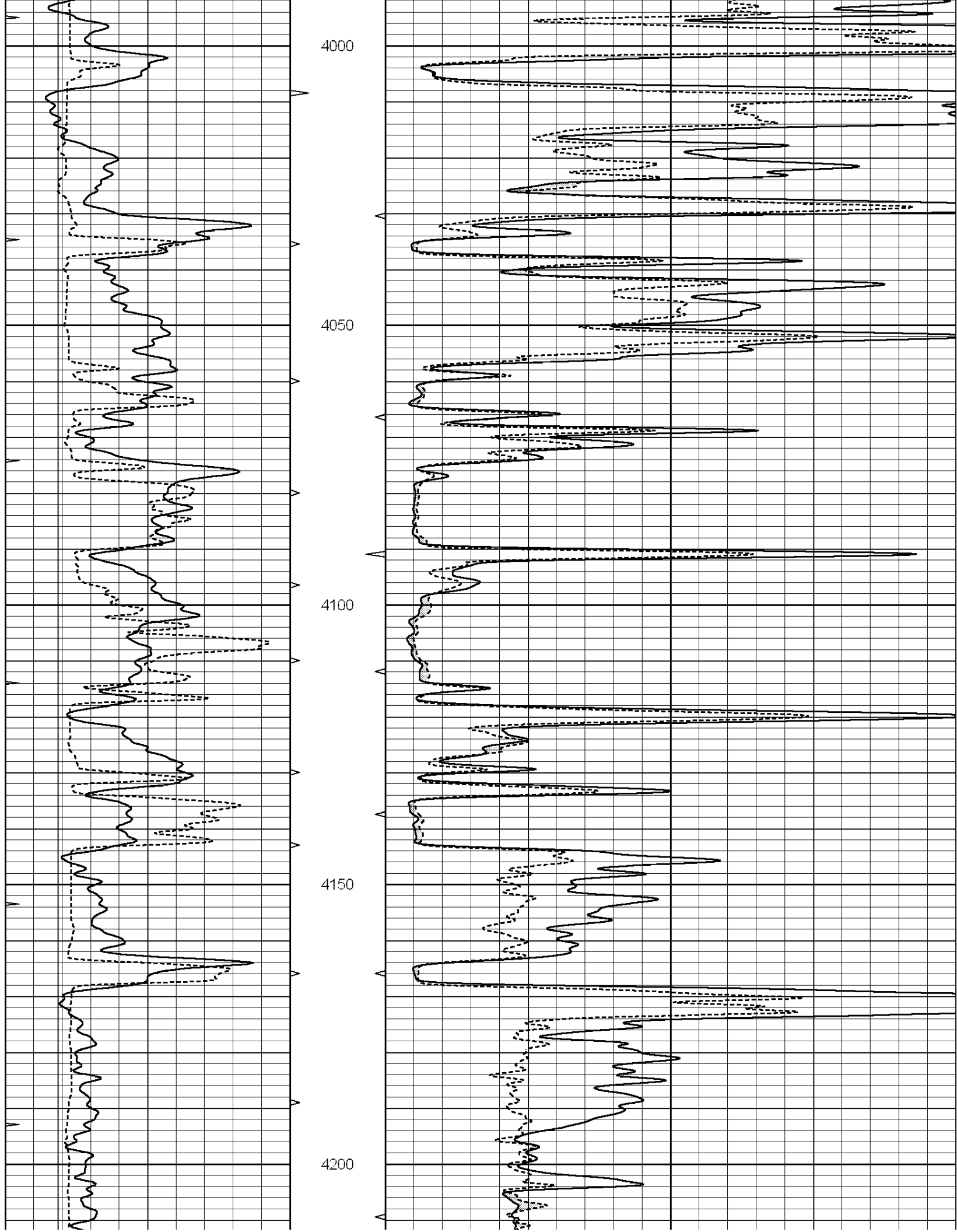
0	GAMMA RAY (GAPI)	150
6	MELCAL (in)	16

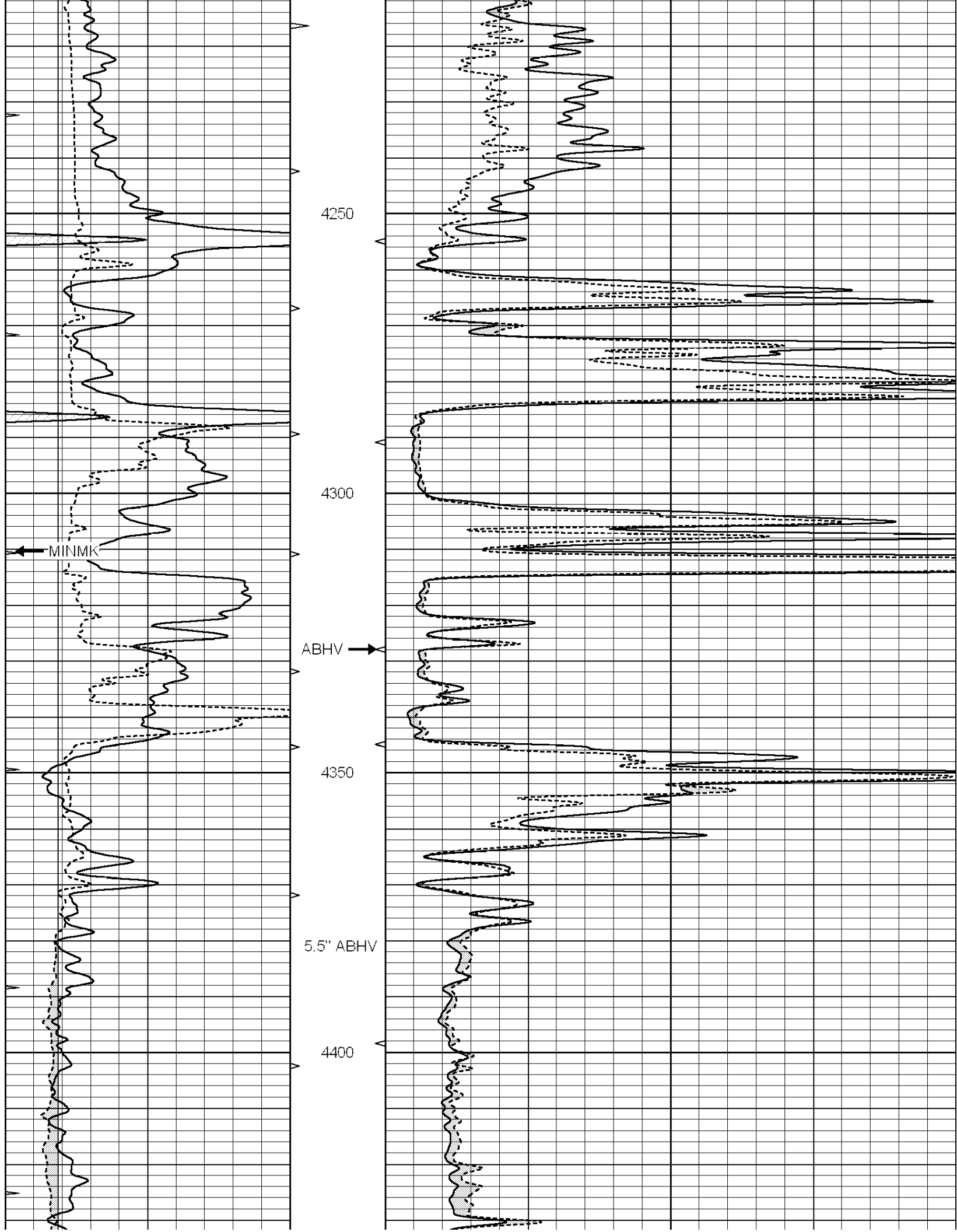
0	MINMK	20

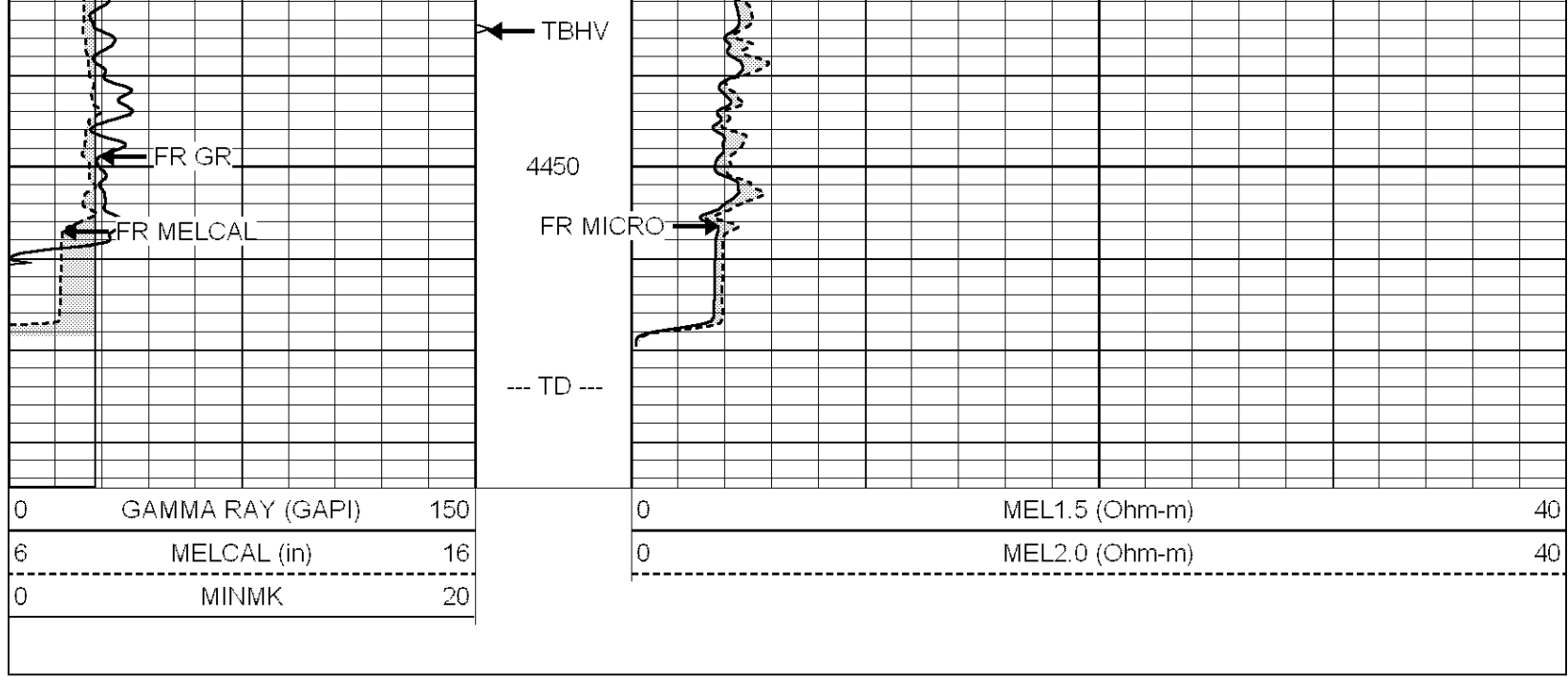
0	MEL1.5 (Ohm-m)	40
0	MEL2.0 (Ohm-m)	40









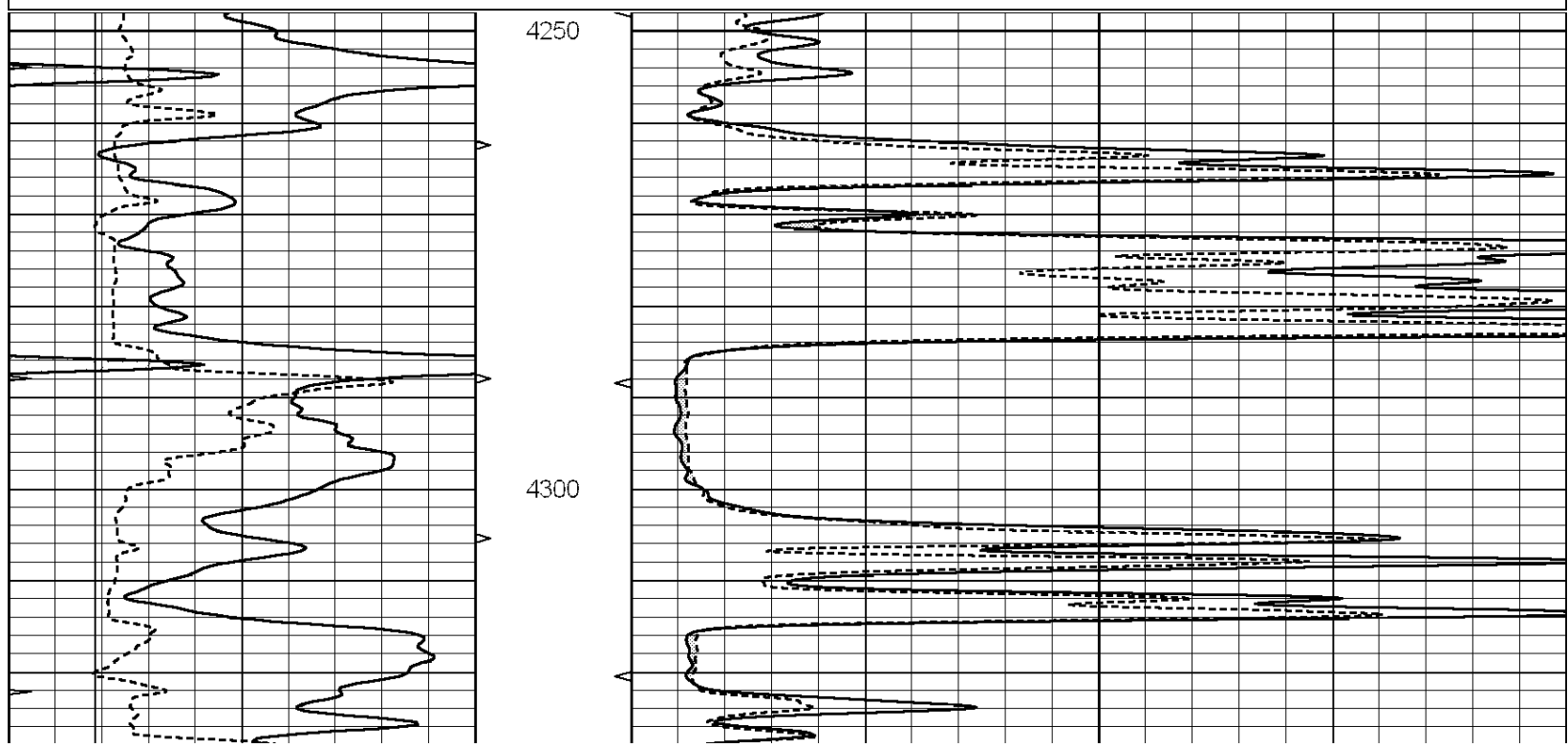


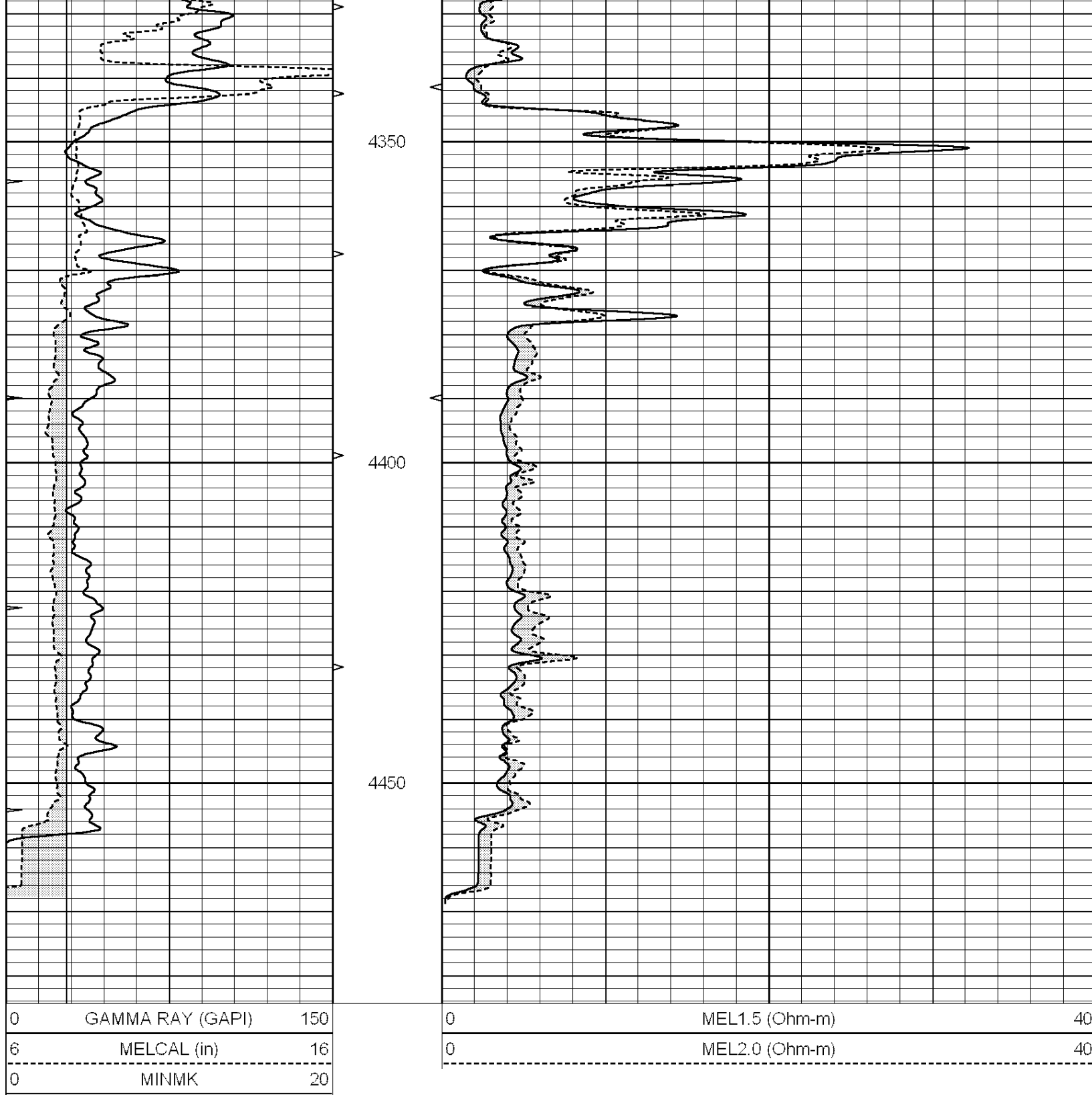
SUPERIOR
Hays,
Kansas

REPEAT SECTION

Database File: 007350pdn.db
 Dataset Pathname: pass4.1A
 Presentation Format: micro
 Dataset Creation: Mon Aug 22 08:27:00 2011 by Calc Open-Cased 090629
 Charted by: Depth in Feet scaled 1:240

0	GAMMA RAY (GAPI)	150	0	MEL1.5 (Ohm-m)	40
6	MELCAL (in)	16	0	MEL2.0 (Ohm-m)	40
0	MINMK	20			





Calibration Report

Database File: 007350pdn.db
 Dataset Pathname: pass5.A
 Dataset Creation: Mon Aug 22 08:10:18 2011

MICRO Calibration Report

Serial Number: Micro1
 Tool Model: Probel
 Performed: Mon Aug 22 07:50:00 2011

Offset Calibration: Offset: 2.704 Offset: 1.500

Caliper Calibration:	Gain=3.794	Offset=-4.566
References	Low Cal 7.700	High Cal 15.000
Readings	3.233	5.157

1.5" Calibration:	Gain=40.000	Offset=0.200
References	Low Cal 0.000	High Cal 20.000
Readings	0.003	0.844

2" Calibration:	Gain=30.000	Offset=0.400
References	Low Cal 0.000	High Cal 20.000
Readings	0.028	0.817

Gamma Ray Calibration Report

Serial Number:	GR5
Tool Model:	OPEN
Performed:	Mon Aug 22 04:57:22 2011

Calibrator Value:	1.0	GAPI
-------------------	-----	------

Background Reading:	0.0	cps
Calibrator Reading:	1.0	cps

Sensitivity:	0.6500	GAPI/cps
--------------	--------	----------