



**SUPERIOR
Hays,
Kansas**

**SONIC
LOG**

Company MULL DRILLING COMPANY, INC.
Well BERNBECK #1-20
Field
County TREGO **State** KANSAS

Company MULL DRILLING CO., INC.
Well BERNBECK #1-20
Field
County TREGO
State KANSAS

Location: API #: 15-195-22723
 1350' FSL & 1075' FWL
 SEC 20 TWP 15S RGE 23W
 Permanent Datum GROUND LEVEL Elevation 2379
 Log Measured From KELLY BUSHING 5' A.G.L.
 Drilling Measured From KELLY BUSHING
 Other Services
 CDL/CNL/PE
 DIL/MEL
 Elevation
 K.B. 2384
 D.F.
 G.L. 2379

Date	8-22-11
Run Number	TWO
Depth Driller	4473
Depth Logger	4474
Bottom Logged Interval	4467
Top Log Interval	210
Casing Driller	215
Casing Logger	215
Bit Size	7.875
Type Fluid in Hole	CHEMICAL MUD
Density / Viscosity	9.3 / 55
pH / Fluid Loss	10.5 / 7.2
Source of Sample	FLOWLINE
Rim @ Meas. Temp	0.80 @ 94F
Rmf @ Meas. Temp	0.60 @ 94F
Rmc @ Meas. Temp	0.96 @ 94F
Source of Rmf / Rmc	MEASURED
Rim @ BHT	.630 @ 119F
Time Circulation Stopped	2 HOURS
Time Logger on Bottom	4:15 A.M.
Maximum Recorded Temperature	119F
Equipment Number	860
Location	HAYS, KS.
Recorded By	RUPP
Witnessed By	LARRY FRIEND

<<< Fold Here >>>

All interpretations are opinions based on inferences from electrical or other measurements and we cannot and do not guarantee the accuracy or correctness of any interpretation, and we shall not, except in the case of gross or willful negligence on our part, be liable or responsible for any loss, costs, damages, or expenses incurred or sustained by anyone resulting from any interpretation made by any of our officers, agents or employees. These interpretations are also subject to our general terms and conditions set out in our current Price Schedule.

Comments

SUPERIOR WELL SERVICES
 785-628-6395
 THANK YOU FOR YOUR BUSINESS
 DIRECTIONS: RANSOM JCT. OF #4 & #283, 5N, 1/8W, N INTO.

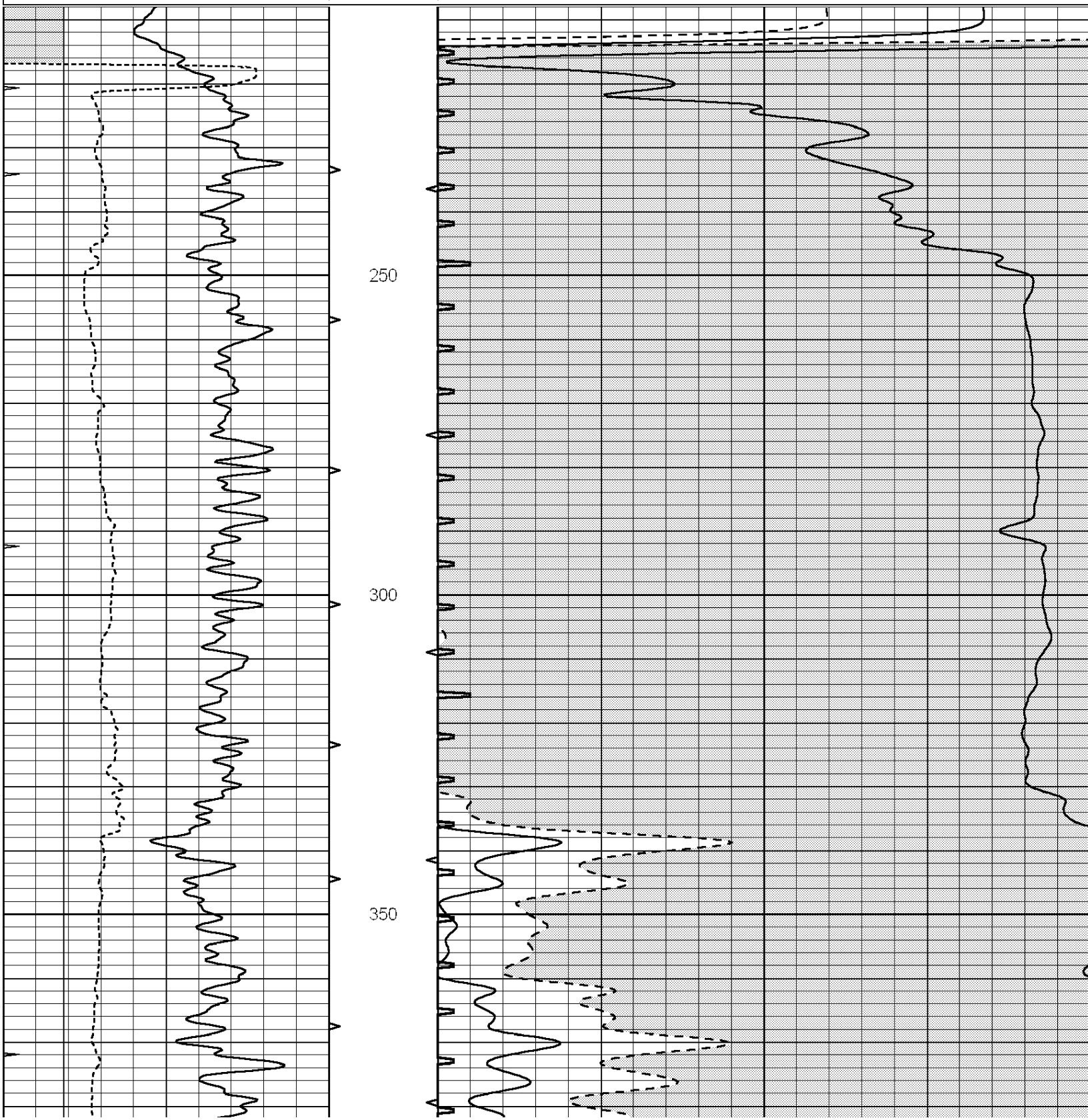


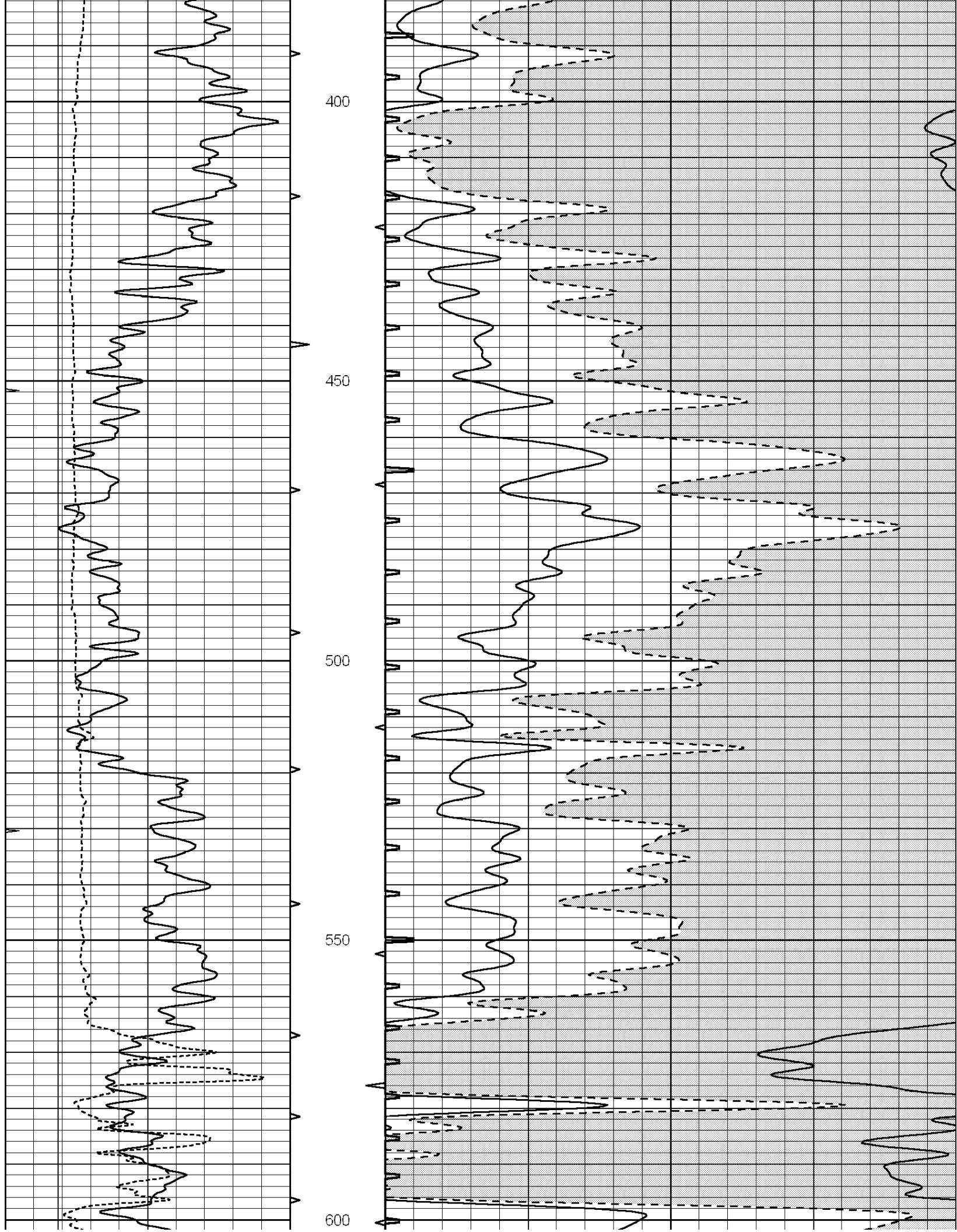
**SUPERIOR
Hays,
Kansas**

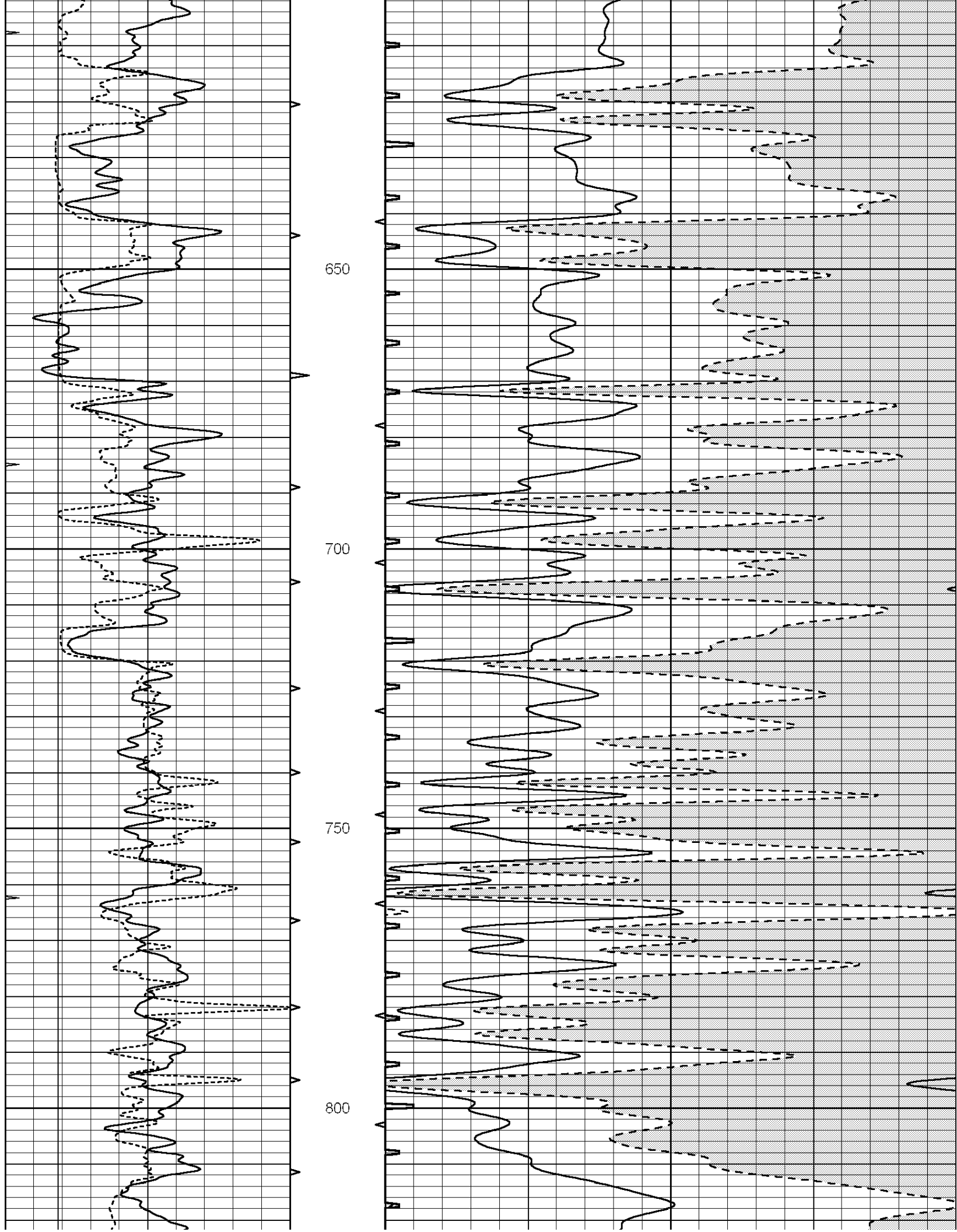
MAIN SECTION

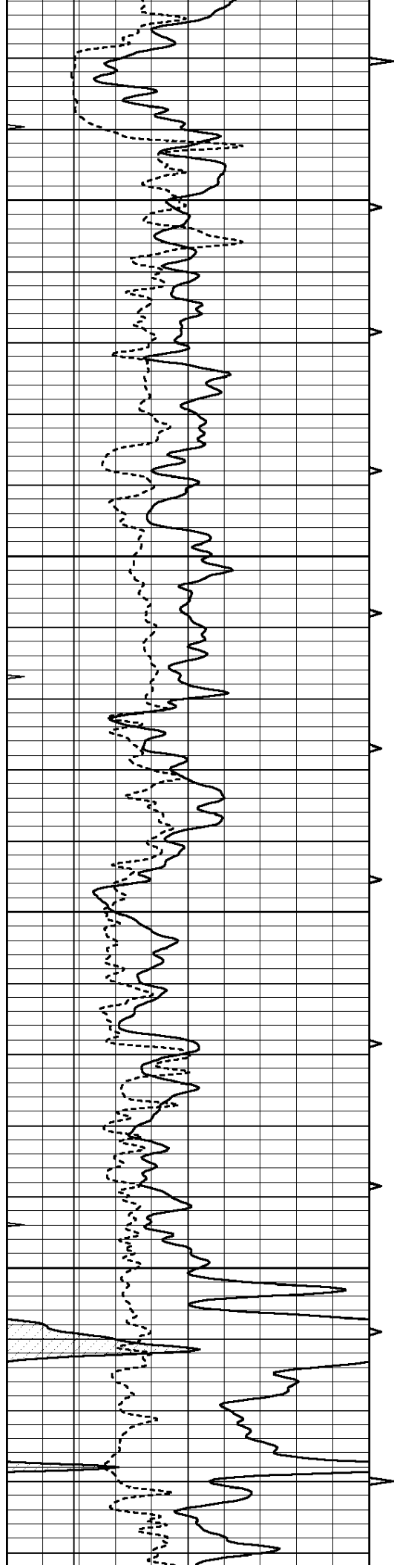
Database File: 007350pdn.db
 Dataset Pathname: pass5.A
 Presentation Format: slt
 Dataset Creation: Mon Aug 22 08:10:18 2011
 Charted by: Depth in Feet scaled 1:240

0	GAMMA RAY (GAPI)	150	ABHV	140	DELTA TIME (usec/ft)	40
6	MELCAL (in)	16	10 (ft3)	0 30	SONIC POROSITY (pu)	-10
0	MINMK	20	TBHV	0	ITT (msec)	20
			0 (ft3)	10		







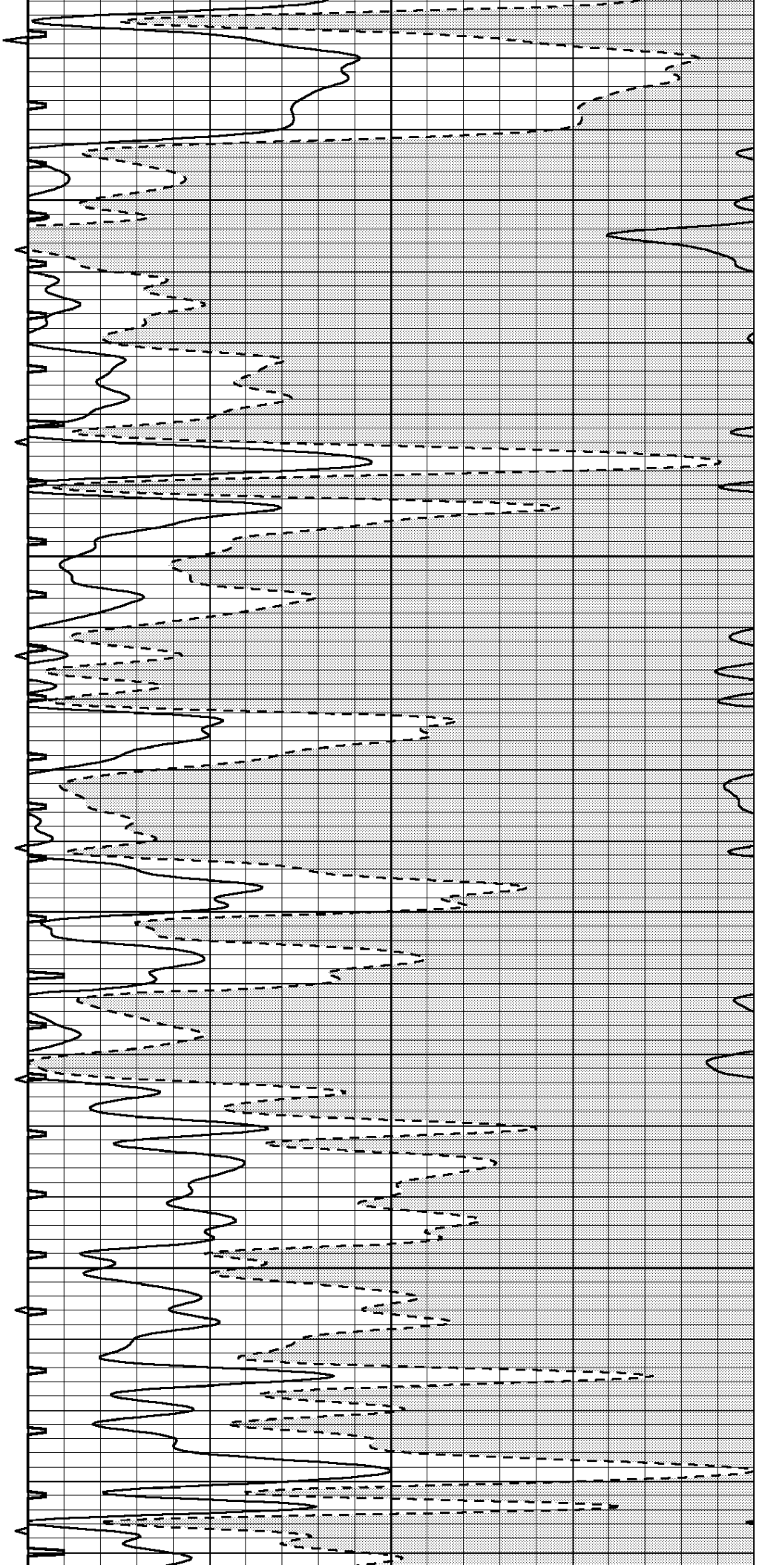


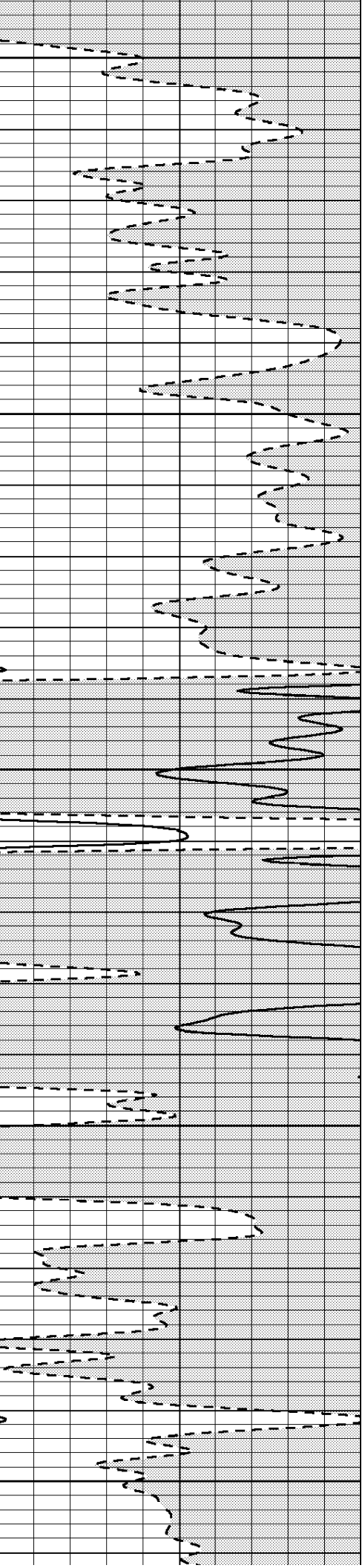
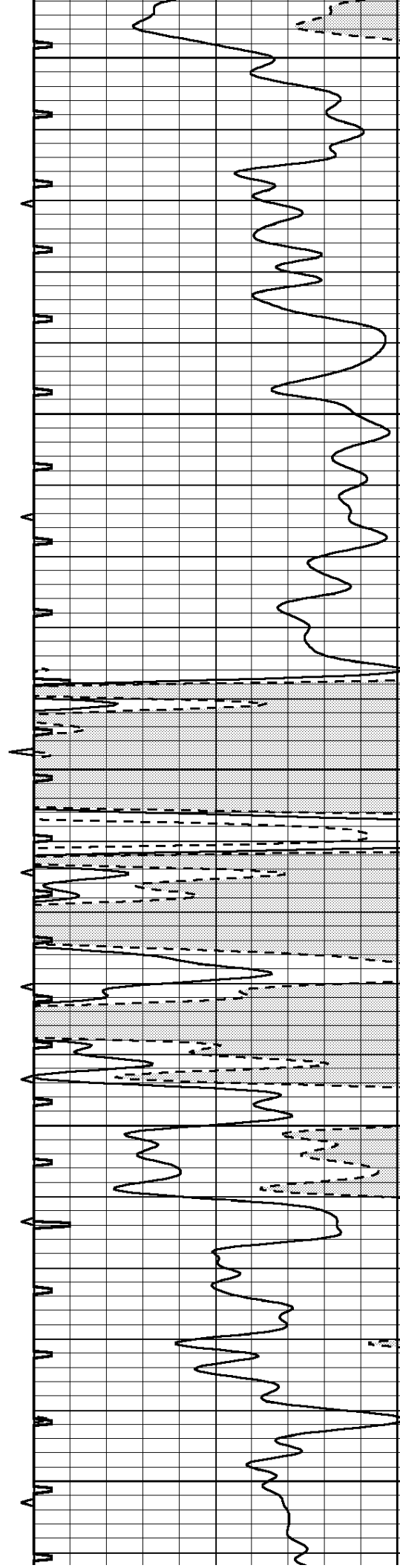
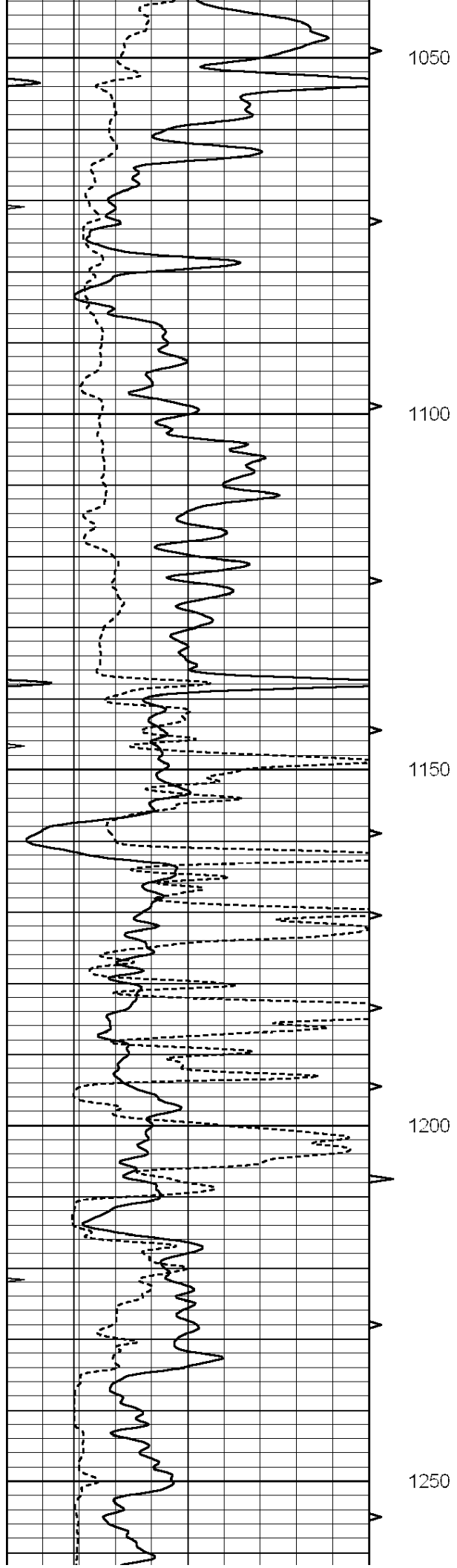
850

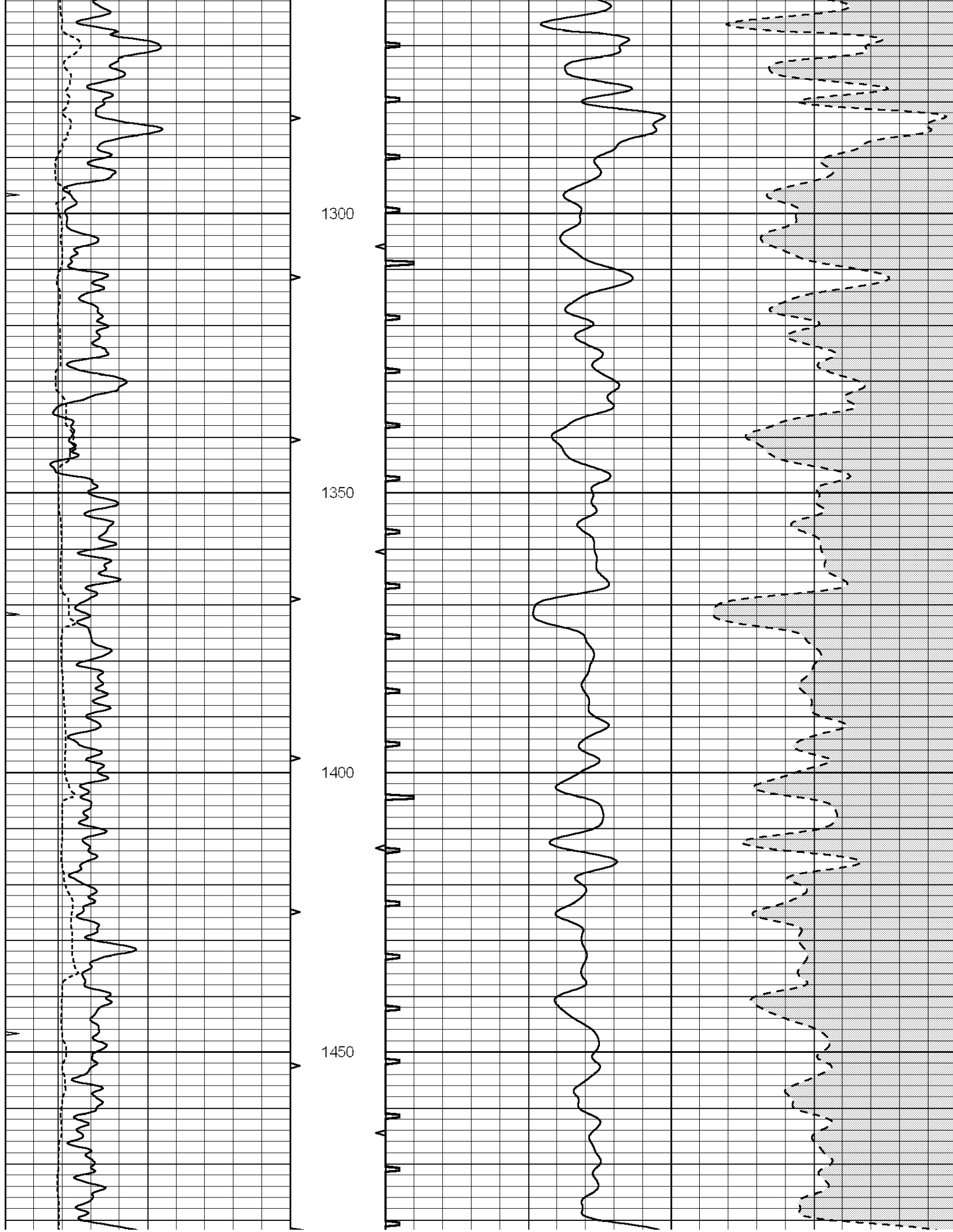
900

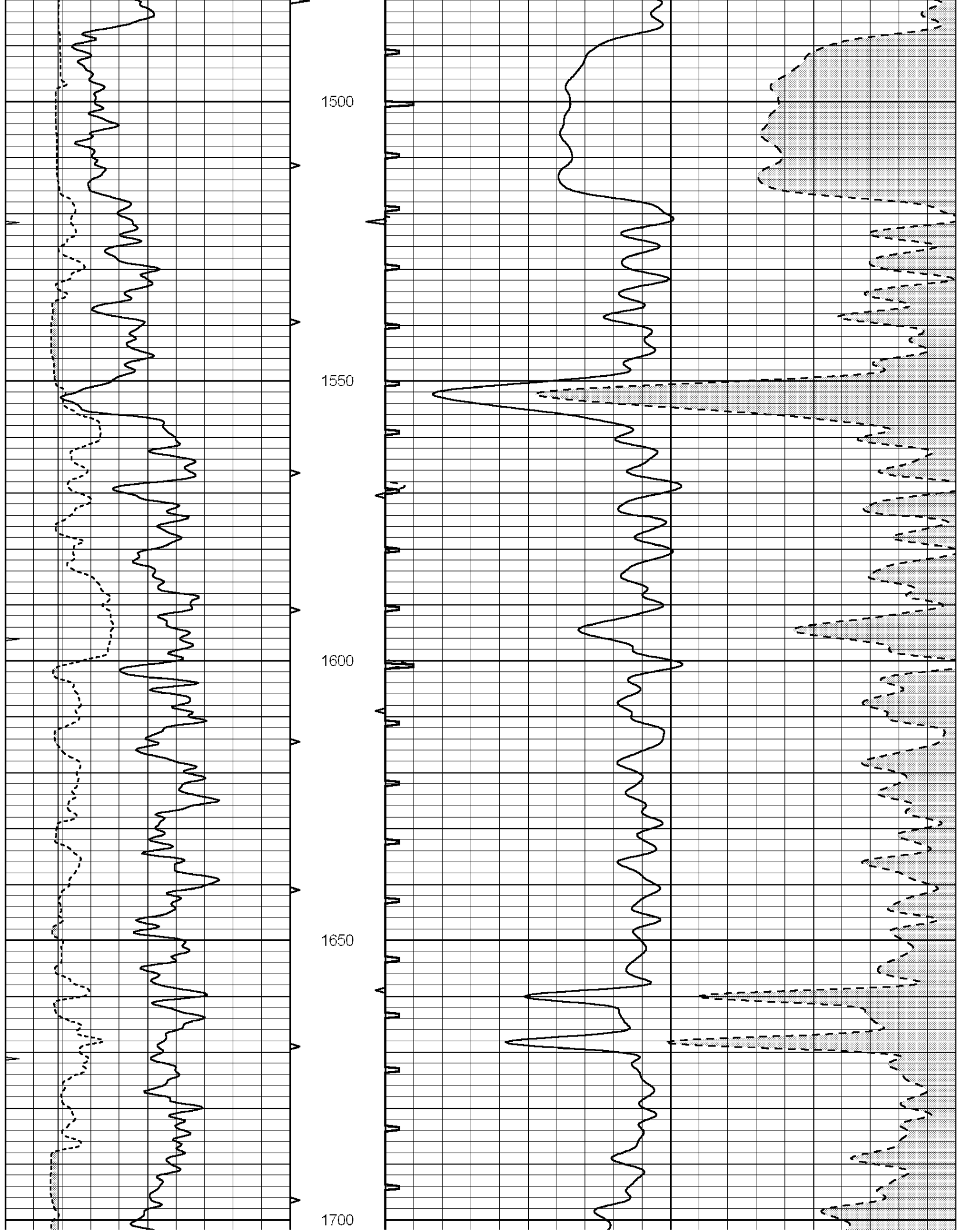
950

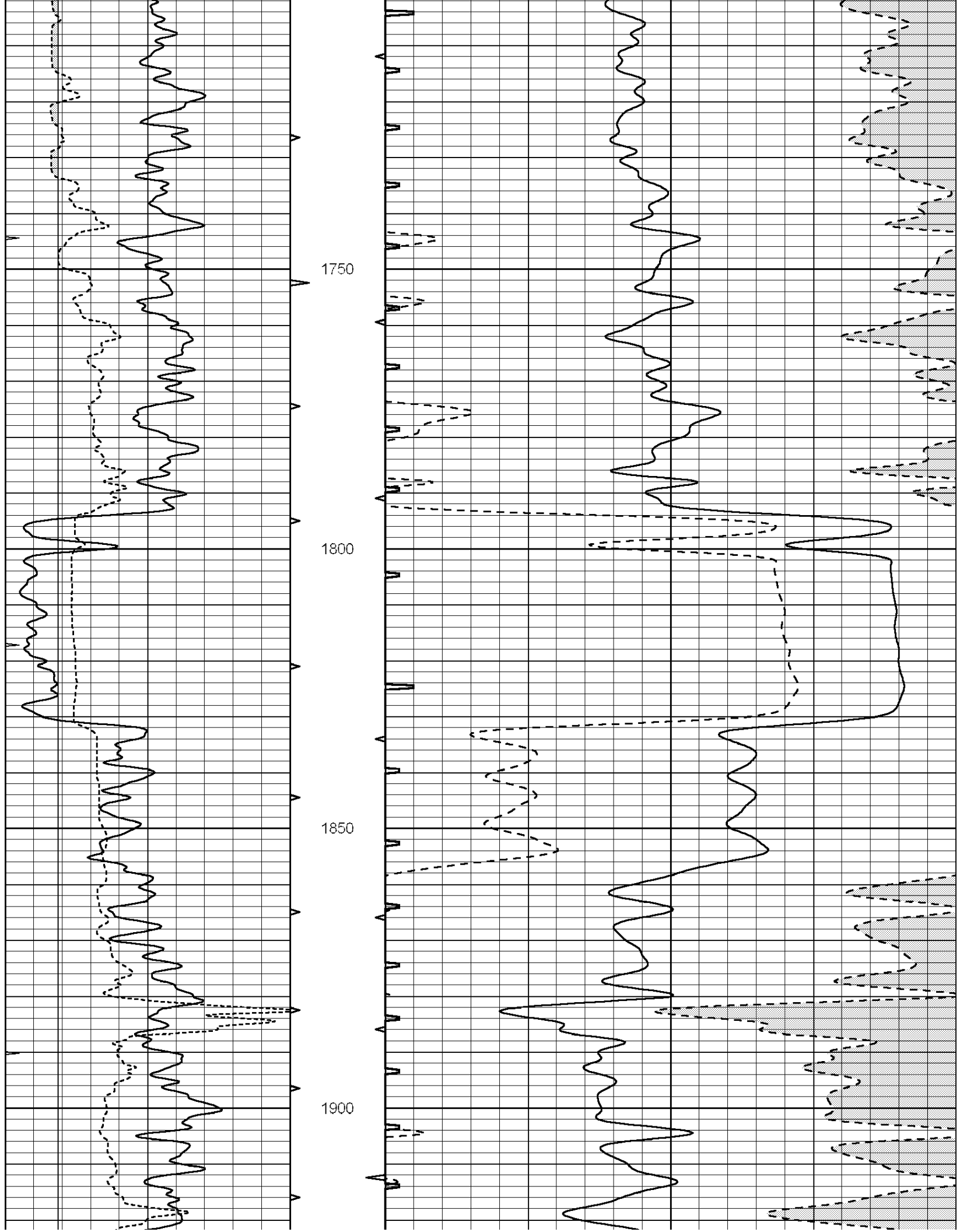
1000

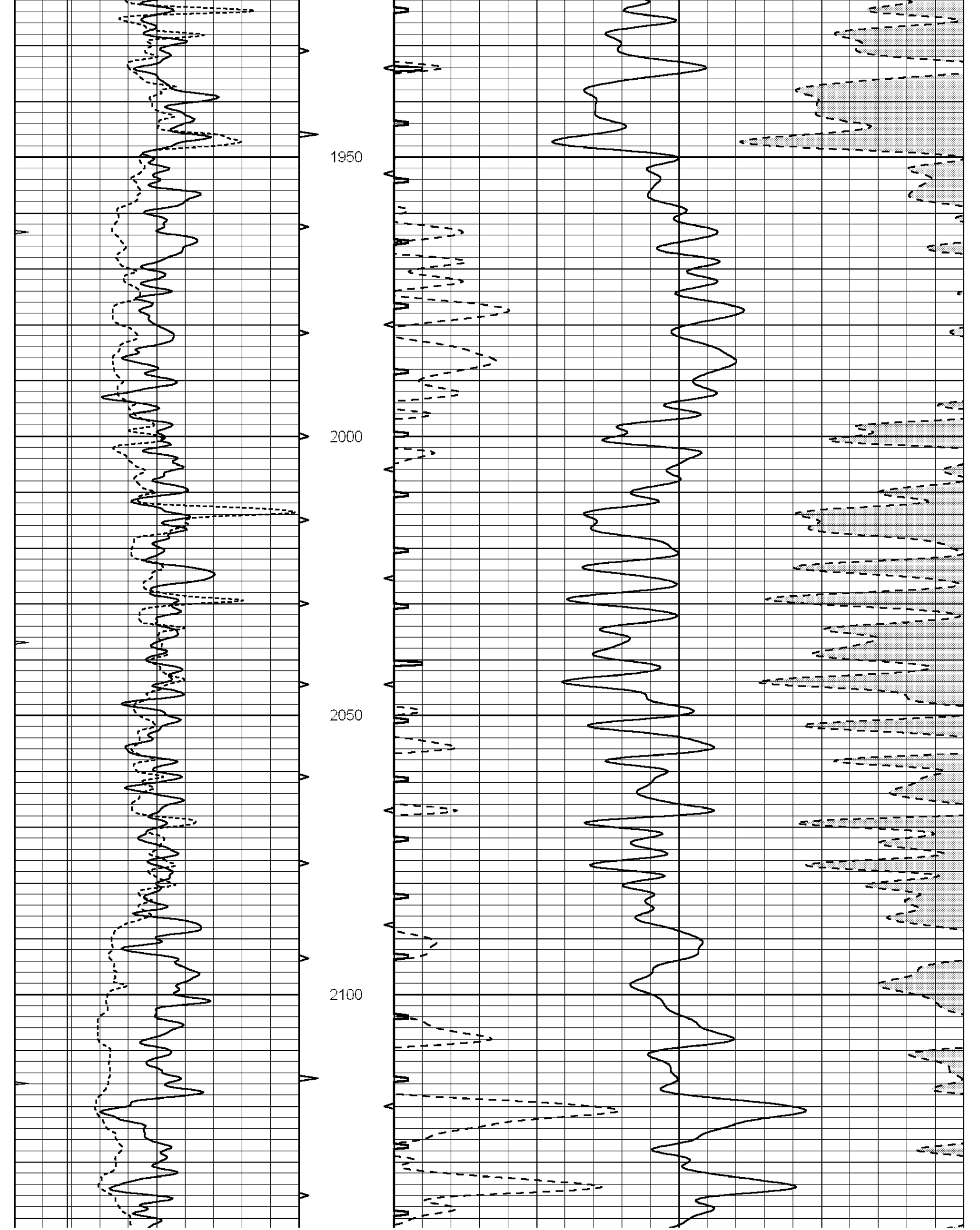


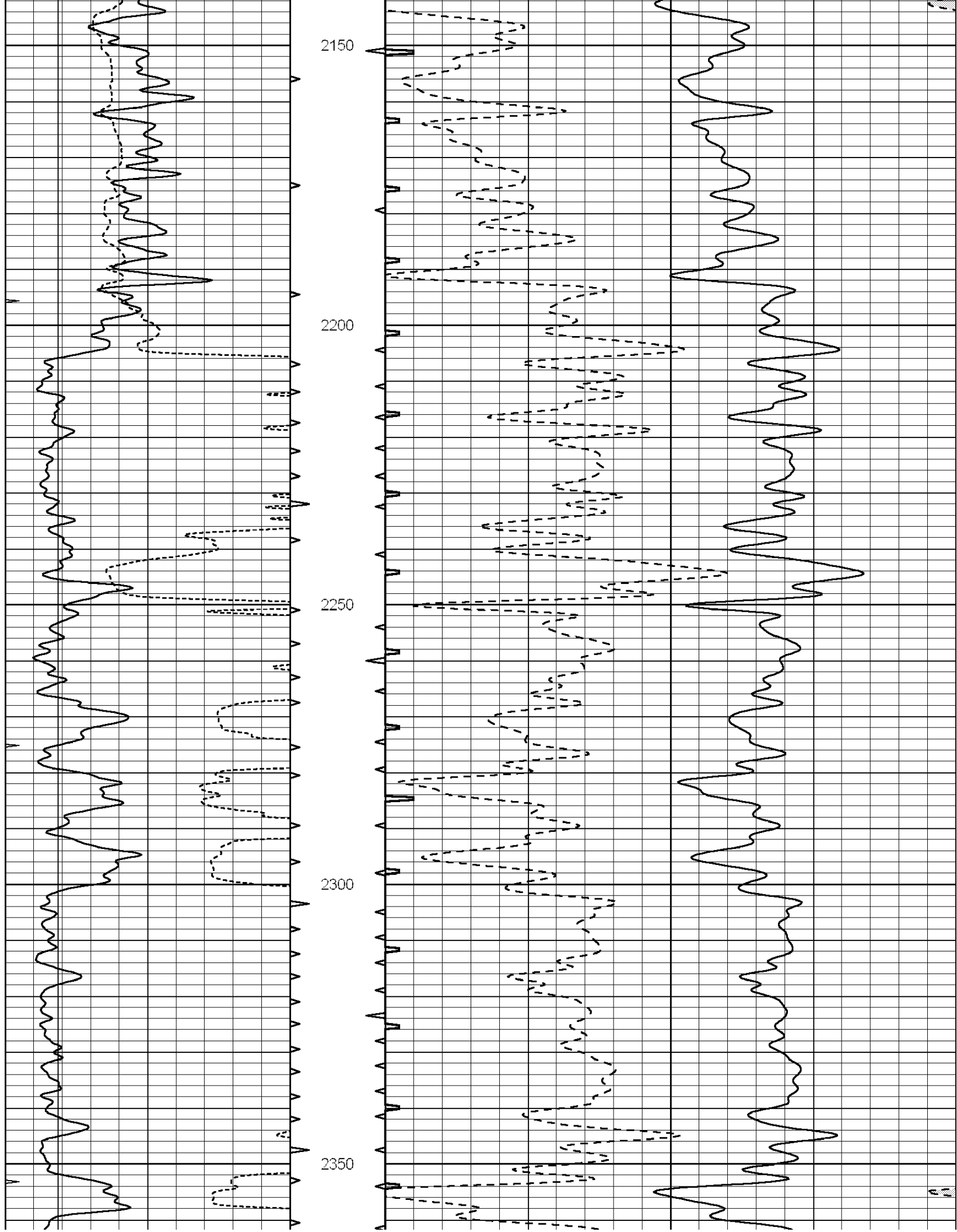


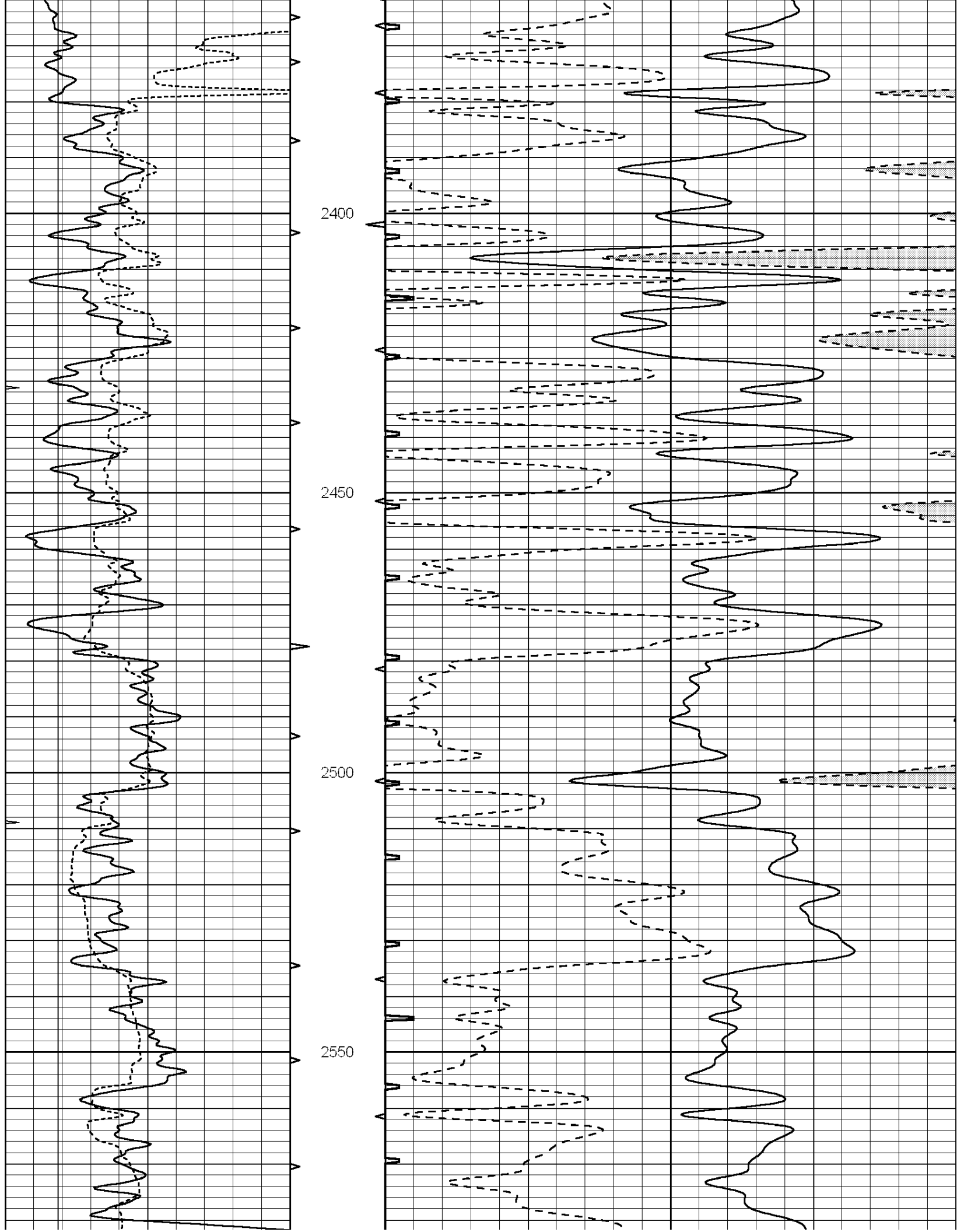


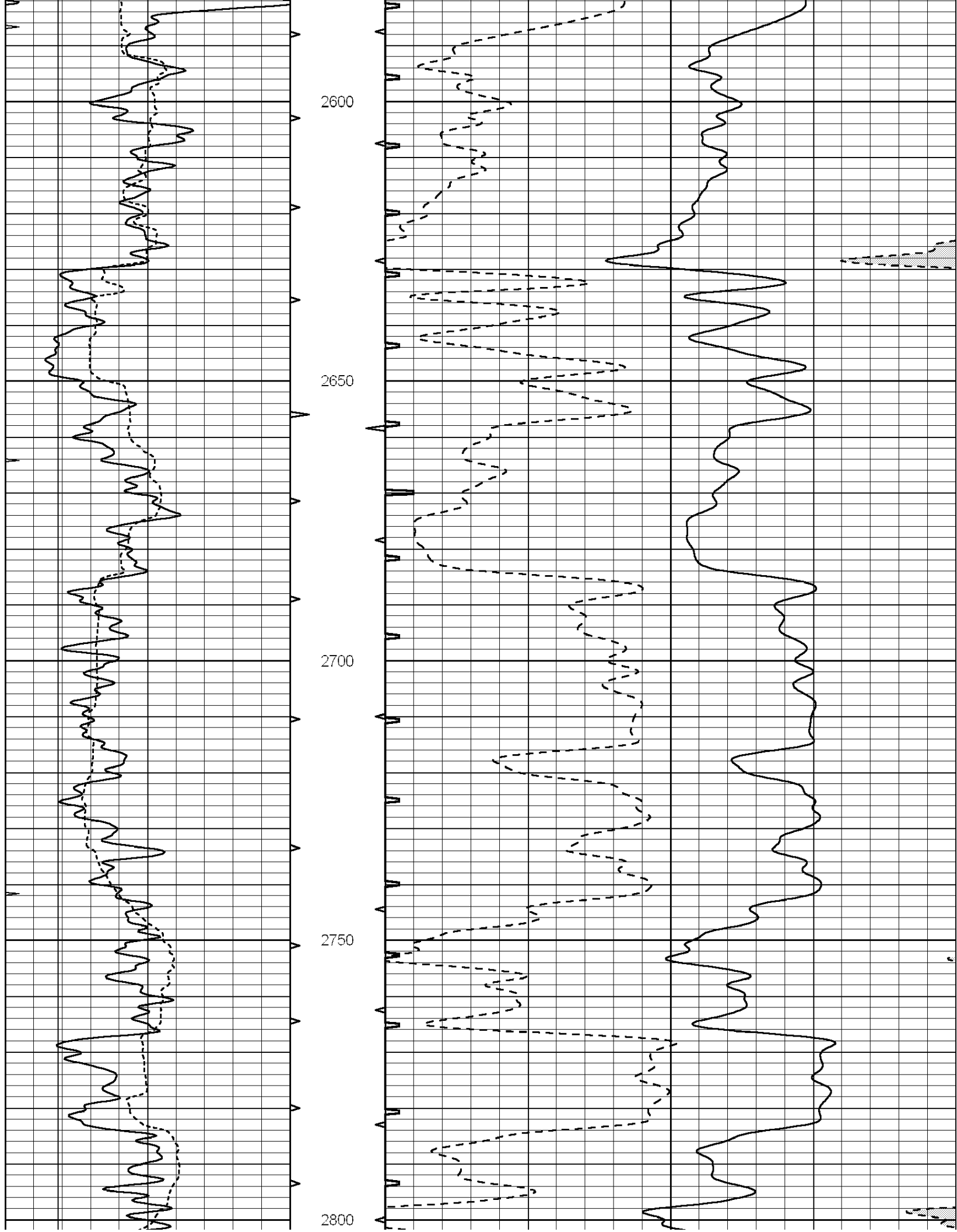


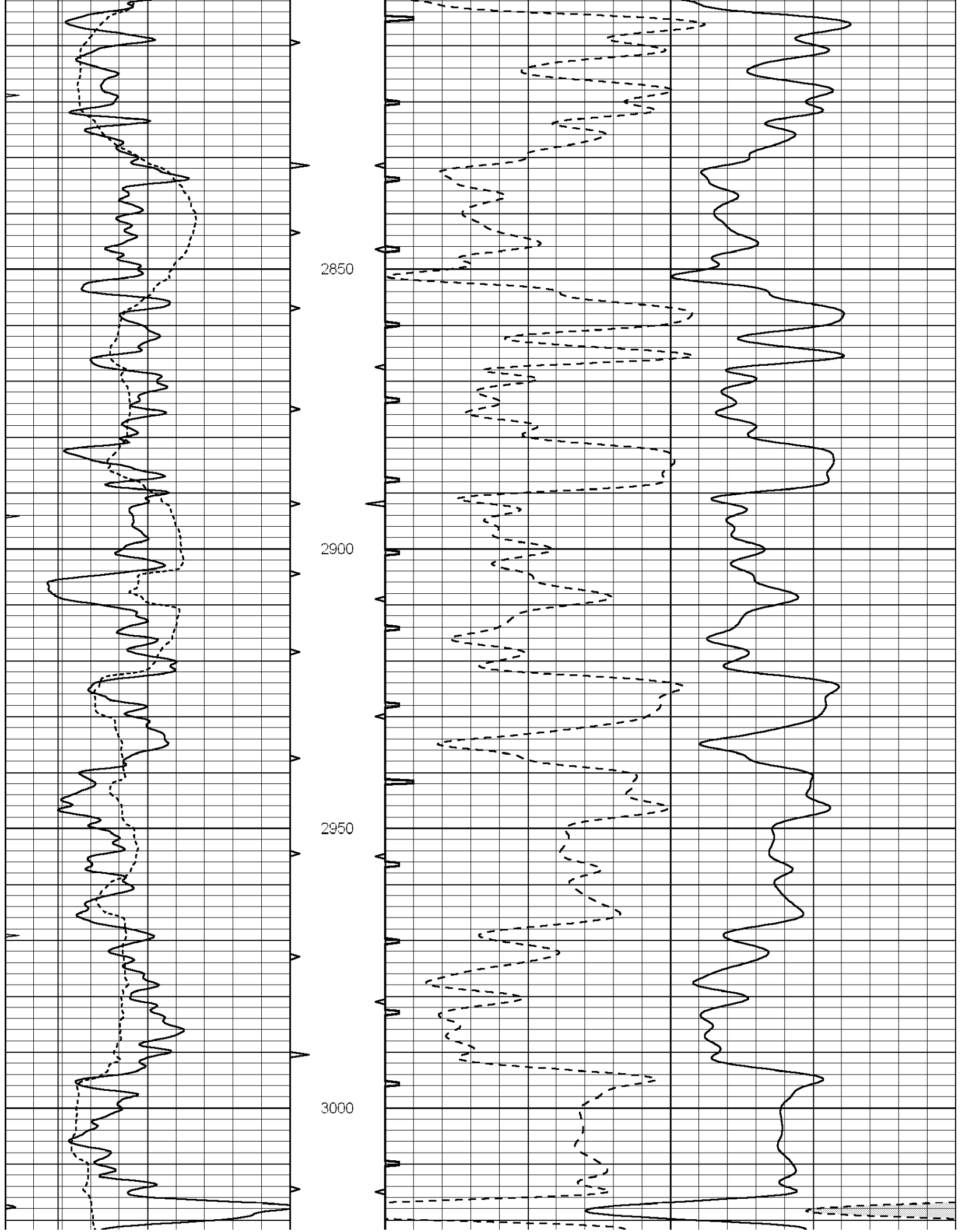


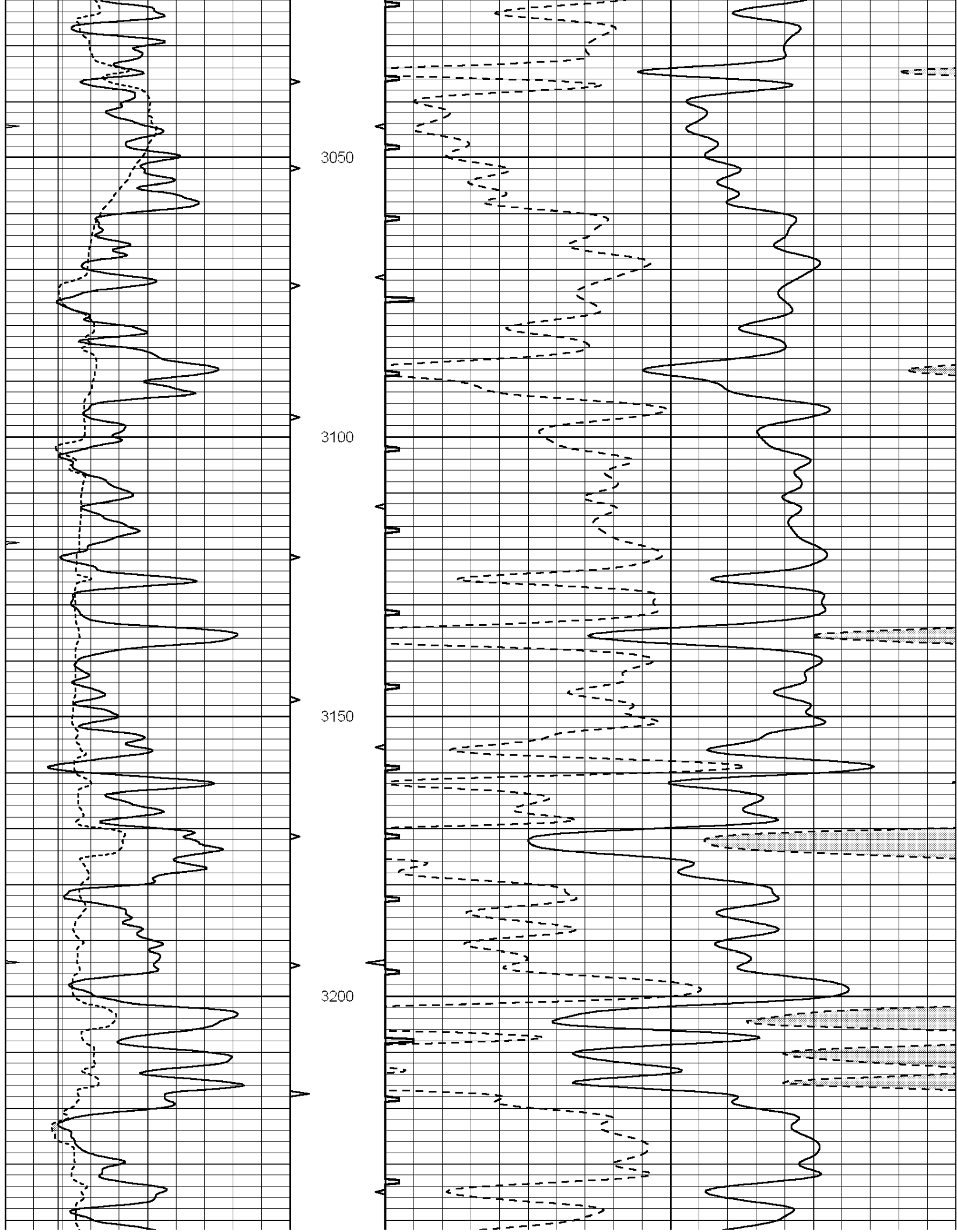


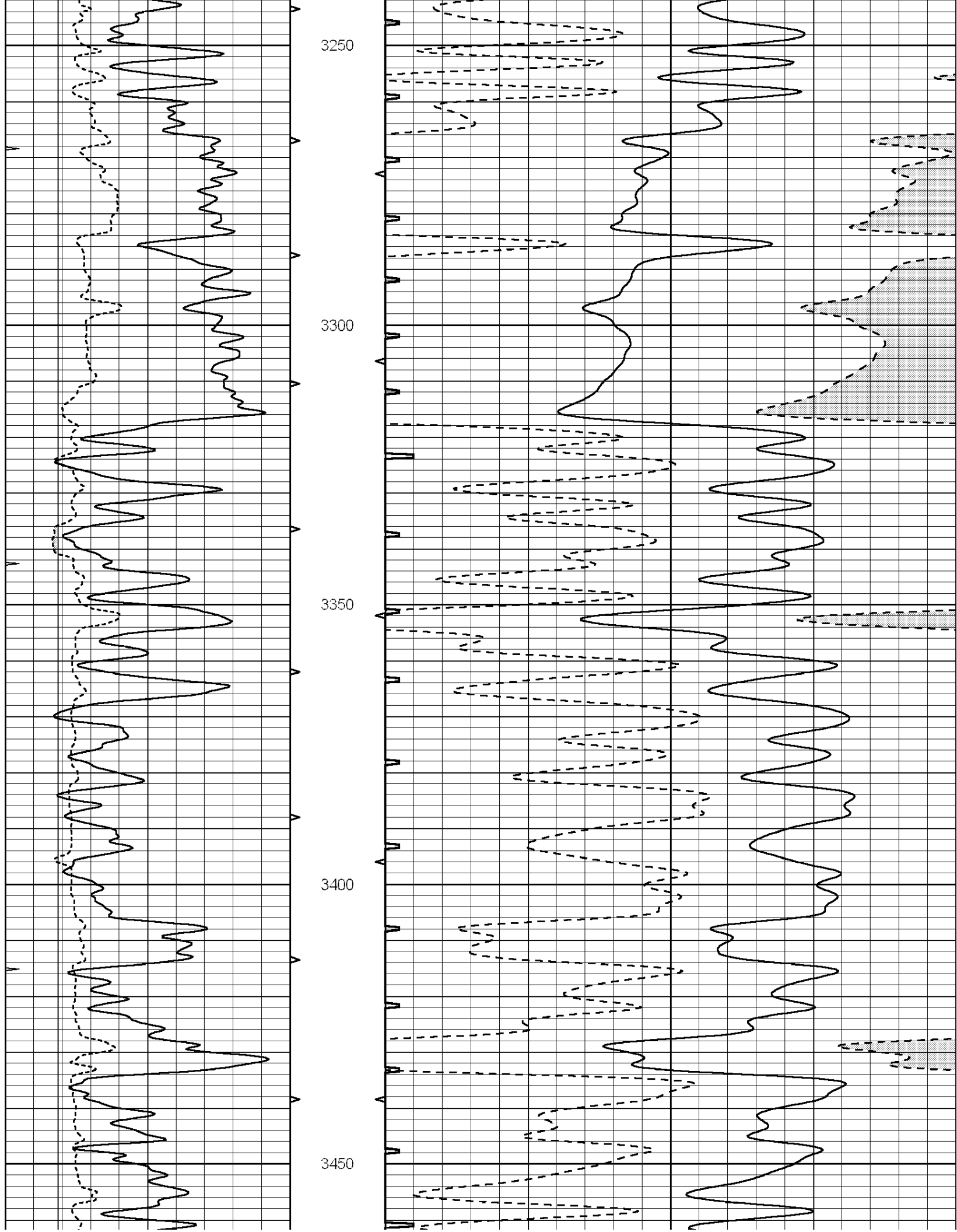












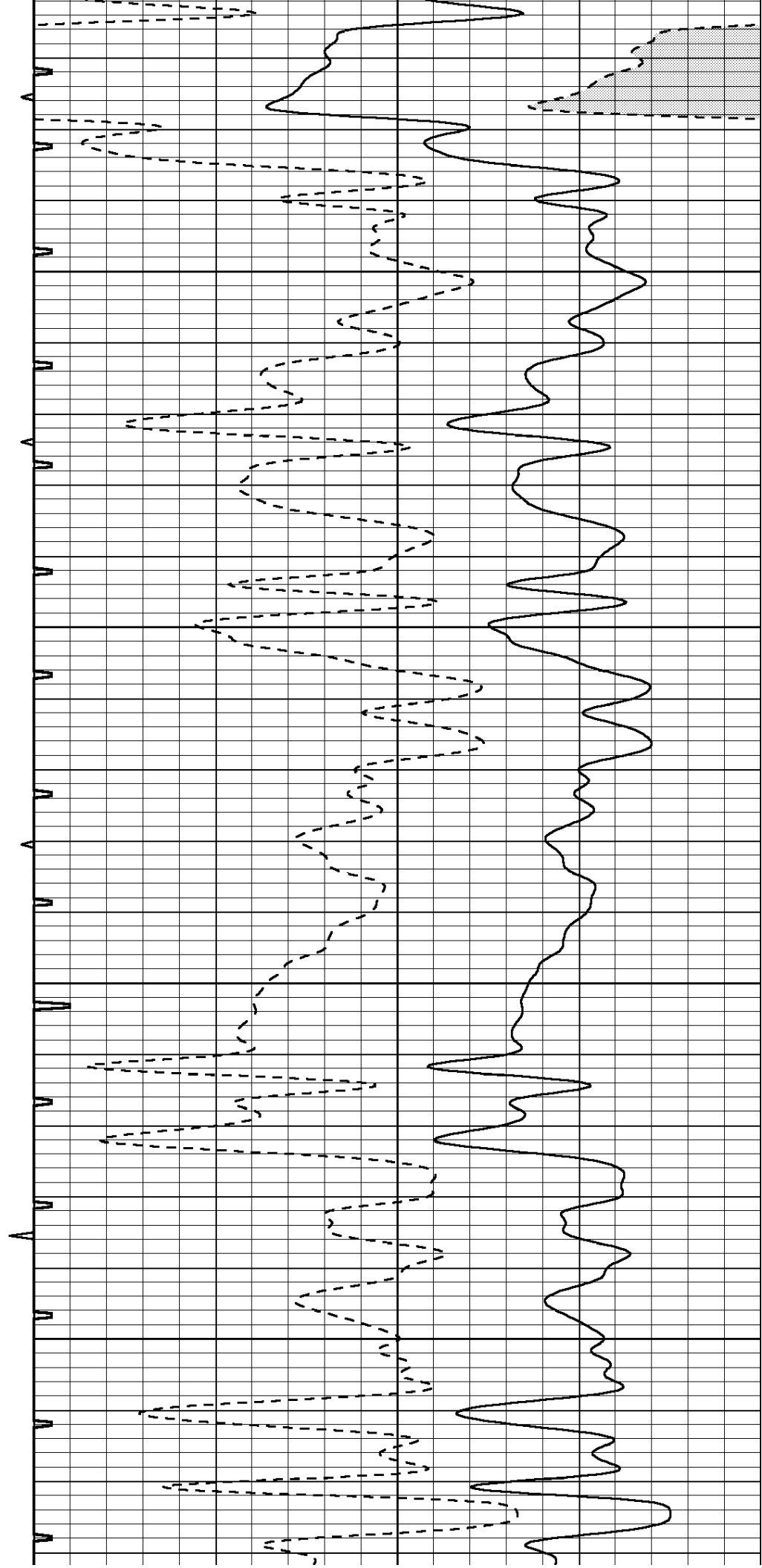


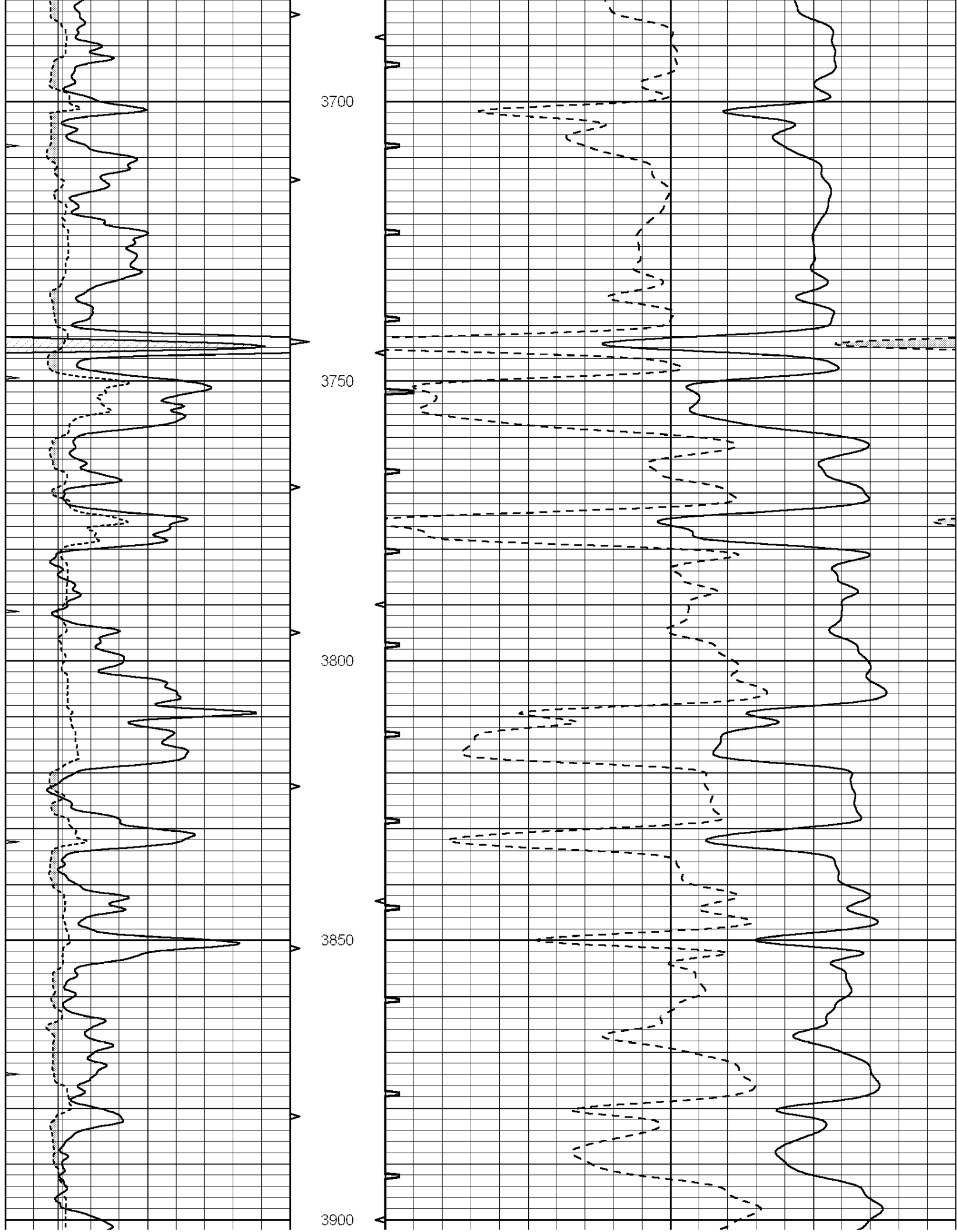
3500

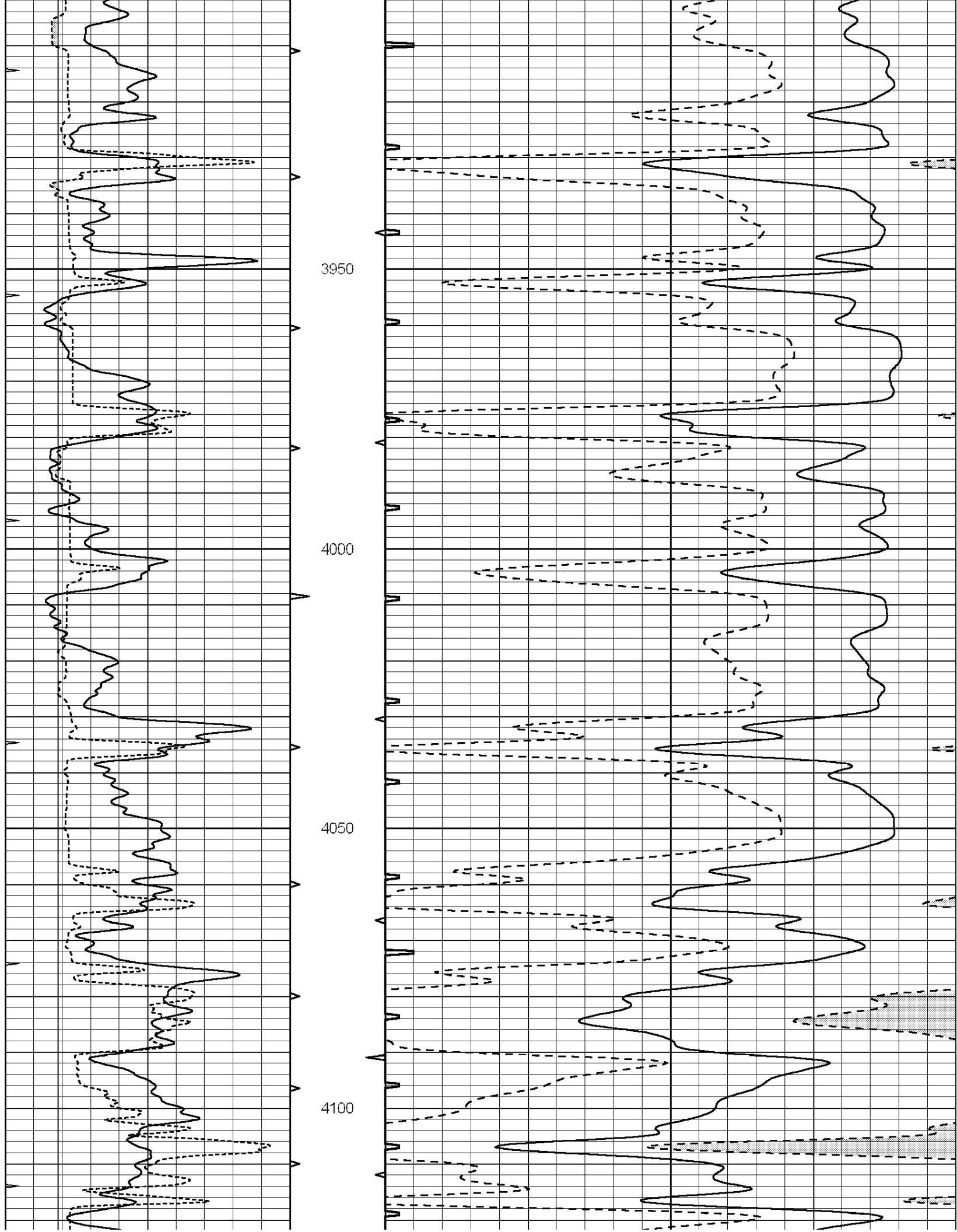
3550

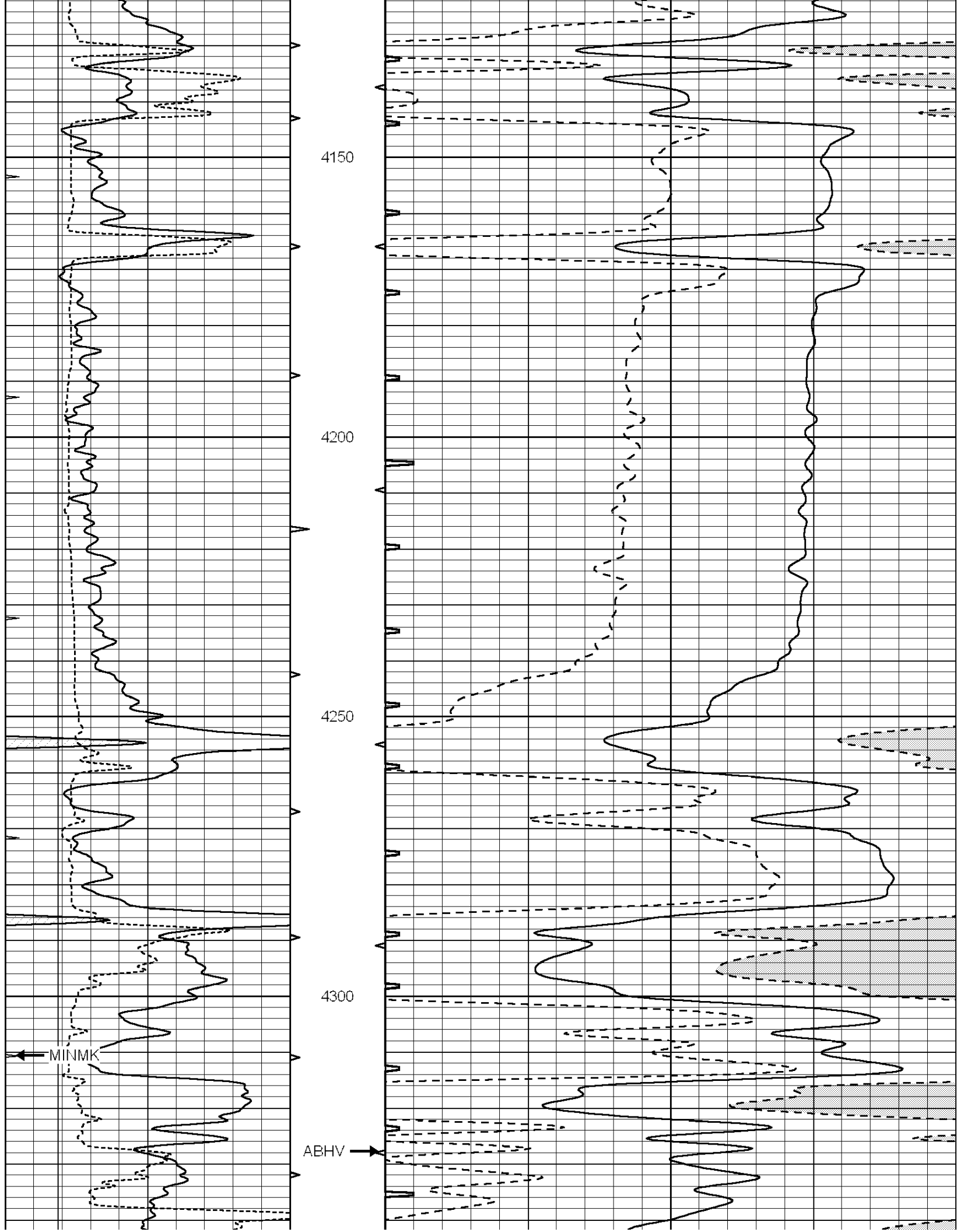
3600

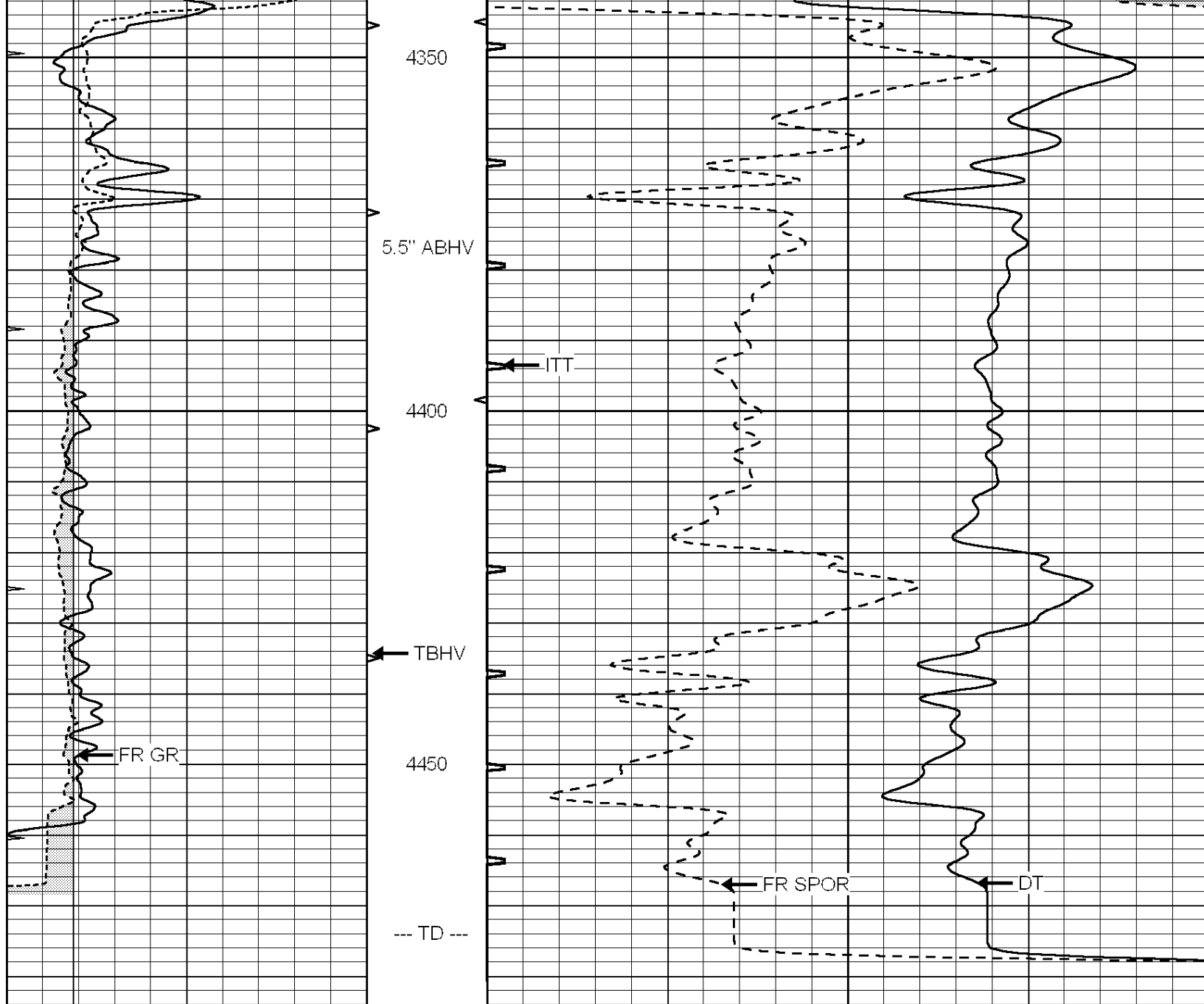
3650











0	GAMMA RAY (GAPI)	150	ABHV	140	DELTA TIME (usec/ft)	40	
6	MELCAL (in)	16	10 (ft3)	0	30	SONIC POROSITY (pu)	-10
0	MINMK	20	TBHV	0	ITT (msec)	20	
			0 (ft3)	10			



SUPERIOR
Hays,
Kansas

REPEAT SECTION

Database File: 007350pdn.db
 Dataset Pathname: pass4.1A
 Presentation Format: slt
 Dataset Creation: Mon Aug 22 08:27:00 2011 by Calc Open-Cased 090629
 Charted by: Depth in Feet scaled 1:240

0	GAMMA RAY (GAPI)	150	ABHV	140	DELTA TIME (usec/ft)	40	
6	MELCAL (in)	16	10 (ft3)	0	30	SONIC POROSITY (pu)	-10

MINMK

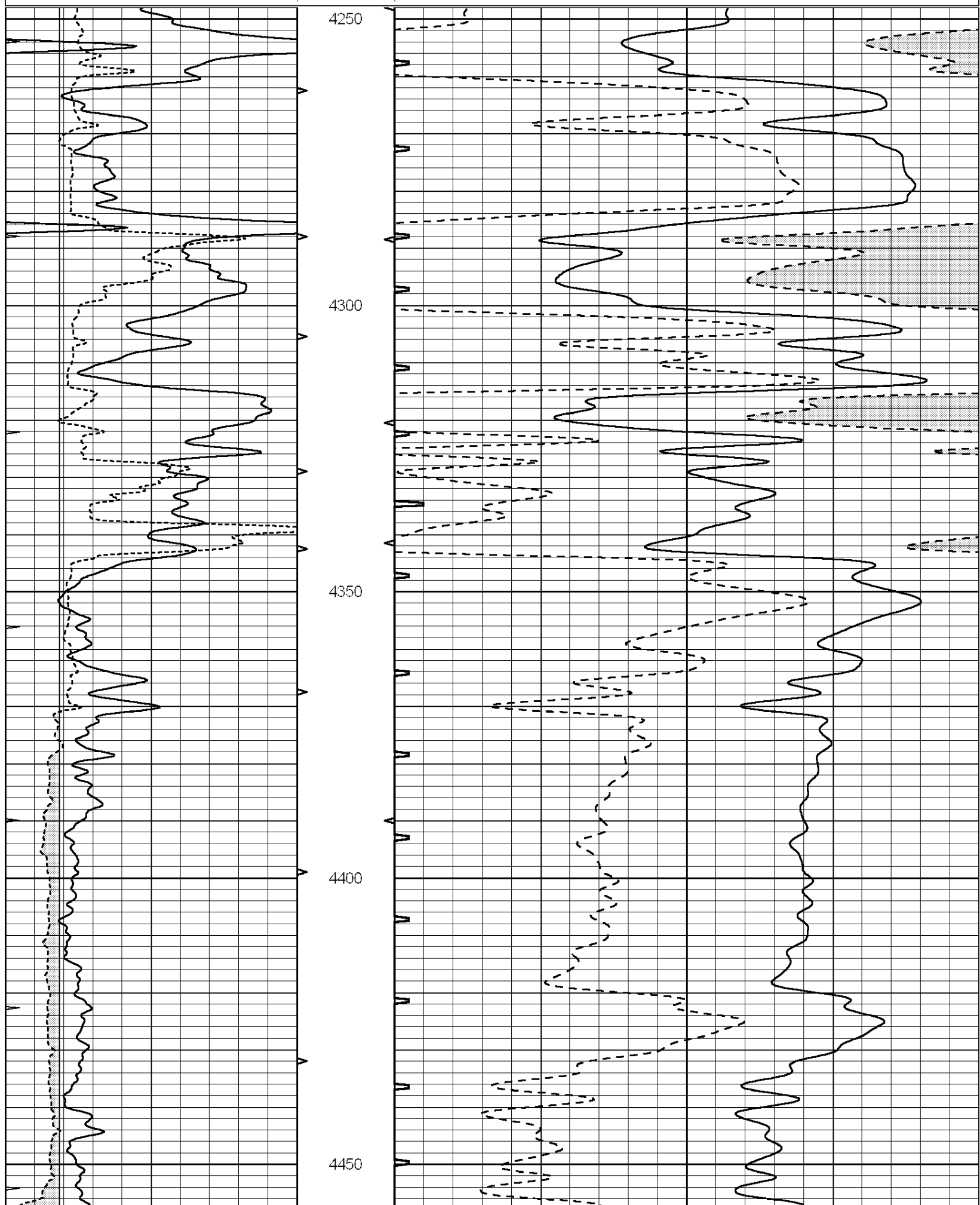
0 20

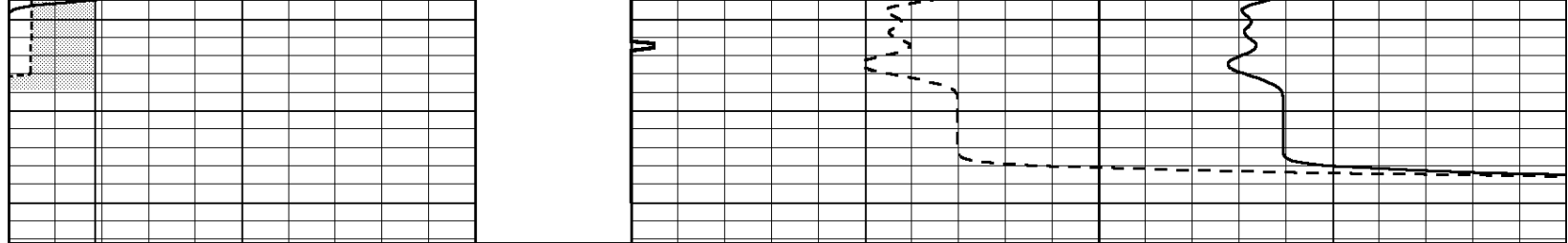
TBHV

0 20

ITT (msec)

0 (ft3) 10





0	GAMMA RAY (GAPI)	150	ABHV	140	DELTA TIME (usec/ft)	40
6	MELCAL (in)	16	10 (ft3) 0	30	SONIC POROSITY (pu)	-10
0	MINMK	20	TBHV	0	ITT (msec)	20
			0 (ft3) 10			