



SUPERIOR
Hays,
Kansas

DUAL INDUCTION
LOG

Company RITCHIE EXPLORATION, INC.
Well #1 SHIPLEY 28 AD UNIT
Field ANTELOPE RIDGE
County GOVE
State KANSAS

Company RITCHIE EXPLORATION, INC.
Well #1 SHIPLEY 28 AD UNIT
Field ANTELOPE RIDGE
County GOVE State KANSAS

Location: API # : 15-063-21934-0000
2570' FNL & 2301' FEL
70' N. & 9' E. OF W/2 - W/2 - E/2
SEC 28 TWP 13S RGE 31W
Permanent Datum GROUND LEVEL Elevation 2833
Log Measured From KELLY BUSHING 10' A.G.L.
Drilling Measured From KELLY BUSHING
Other Services CNL/CDL
Elevation
K.B. 2843
D.F. 2841
G.L. 2833

Date	8/25/11
Run Number	ONE
Depth Driller	4605
Depth Logger	4608
Bottom Logged Interval	4606
Top Log Interval	00
Casing Driller	8 5/8"@217'
Casing Logger	217
Bit Size	7 7/8"
Type Fluid in Hole	CHEMICAL MUD
Density / Viscosity	8.9/63
pH / Fluid Loss	10.0/8.0
Source of Sample	FLOWLINE
Rm @ Meas. Temp	.600@100F
Rmt @ Meas. Temp	.450@100F
Rmc @ Meas. Temp	.720@100F
Source of Rmf / Rmc	MEASUREMENT
Rm @ BHT	.496@121F
Time Circulation Stopped	2 HOURS
Time Logger on Bottom	2:00 P.M.
Maximum Recorded Temperature	121F
Equipment Number	4010
Location	HAYS, KANSAS
Recorded By	JEFF LUEBBERS
Witnessed By	TED JOCHEMS

<<< Fold Here >>>

All interpretations are opinions based on inferences from electrical or other measurements and we cannot and do not guarantee the accuracy or correctness of any interpretation, and we shall not, except in the case of gross or willful negligence on our part, be liable or responsible for any loss, costs, damages, or expenses incurred or sustained by anyone resulting from any interpretation made by any of our officers, agents or employees. These interpretations are also subject to our general terms and conditions set out in our current Price Schedule.

Comments

THANK YOU FOR USING SUPERIOR WELL SERVICE HAYS, KANSAS (785) 628-6395
DIRECTIONS
OAKLEY, KS. (JUNCTION OF OLD 40 & HWY 83) 13 S. ON HWY 83 TO "QUAIL RD.", 3E., 2S., 1 1/2E., S. IN



SUPERIOR
Hays,
Kansas

MAIN SECTION

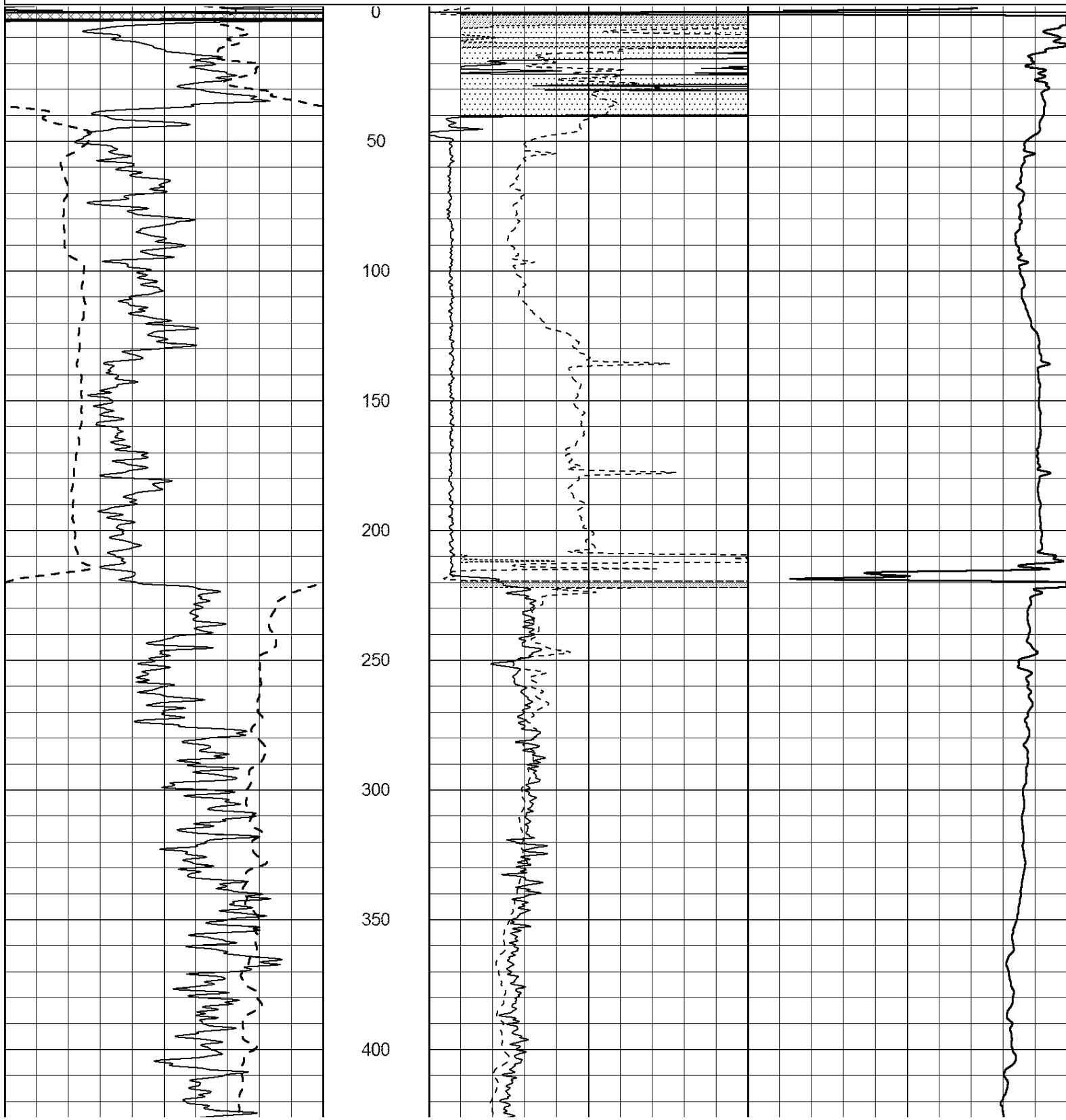
Database File: 007285ddn.db
 Dataset Pathname: pass3.8
 Presentation Format: dil2
 Dataset Creation: Thu Aug 25 15:52:36 2011 by Calc Open-Cased 110302
 Charted by: Depth in Feet scaled 1:600

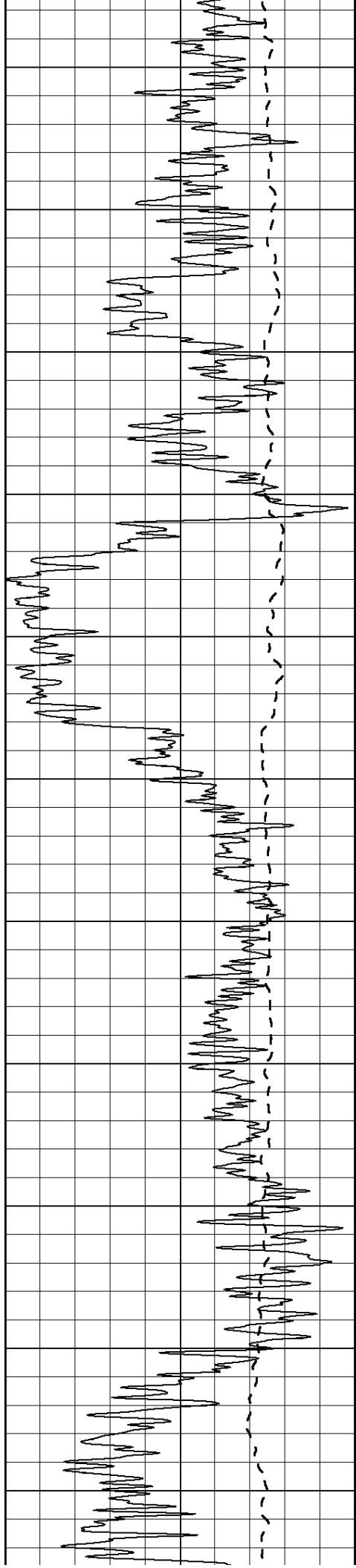
0	Gamma Ray (GAPI)	150
-100	SP (mV)	100

0	RLL3 (Ohm-m)	50
0	RILD (Ohm-m)	50

1000	CILD (mmho/m)	0
------	---------------	---

50	RILD X10 (Ohm-m)	500
50	RLL3 X10 (Ohm-m)	500





450

500

550

600

650

700

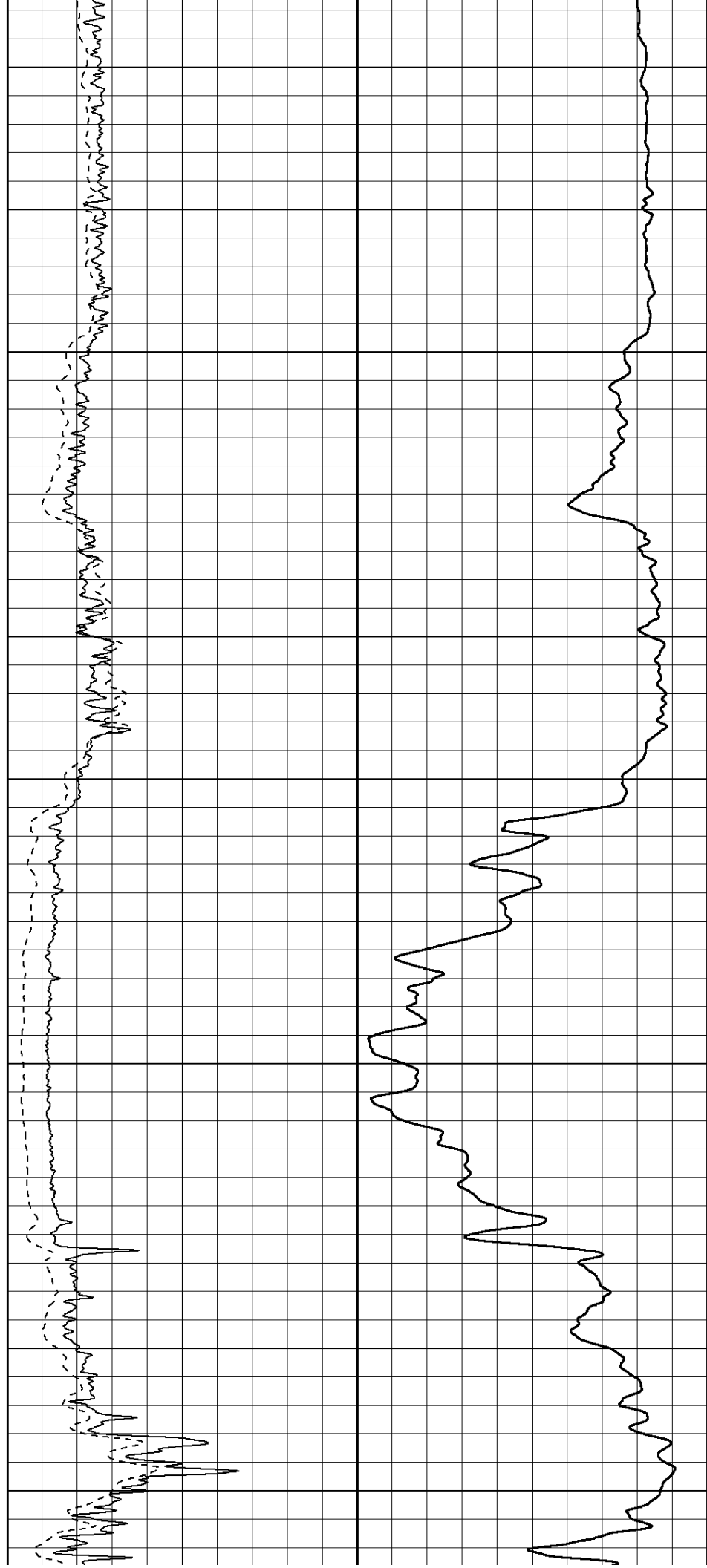
750

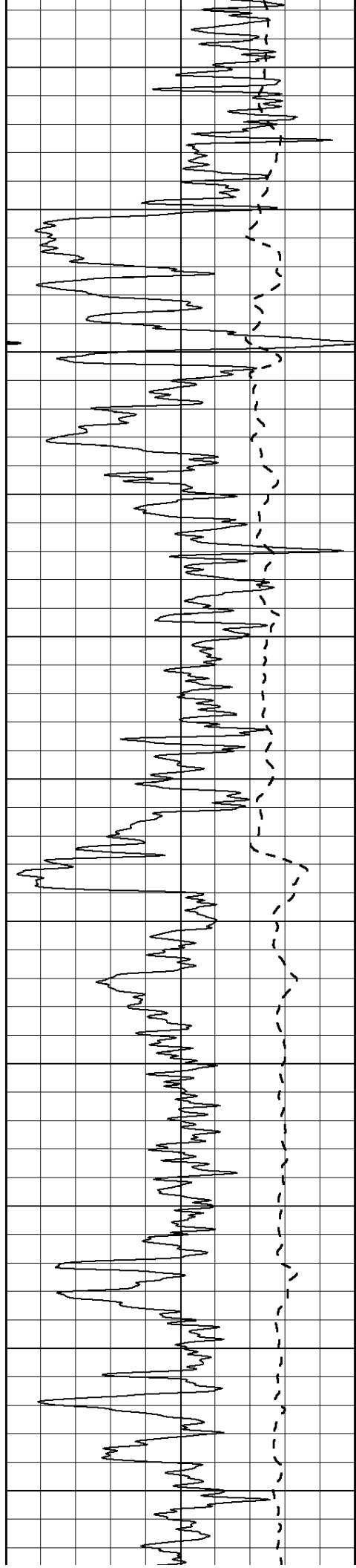
800

850

900

950





1000

1050

1100

1150

1200

1250

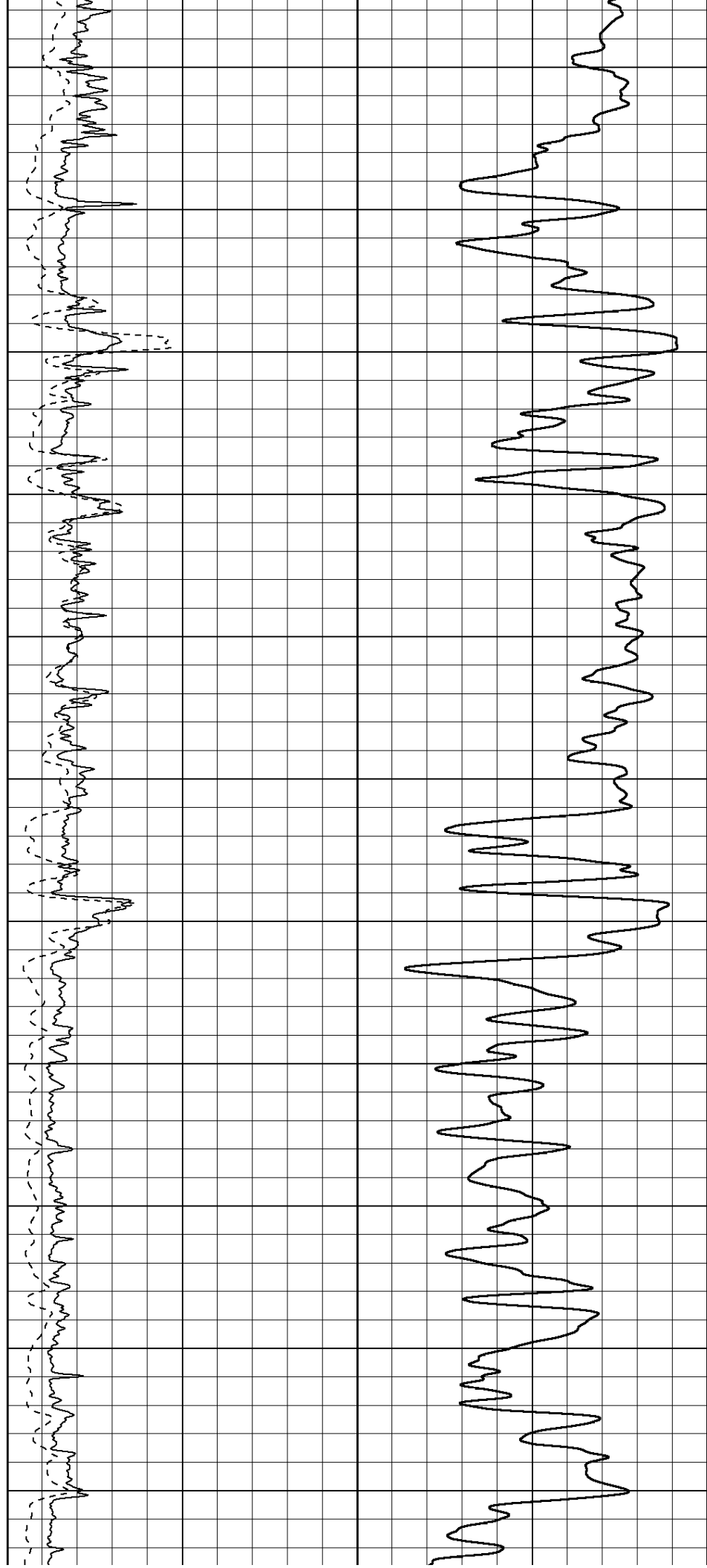
1300

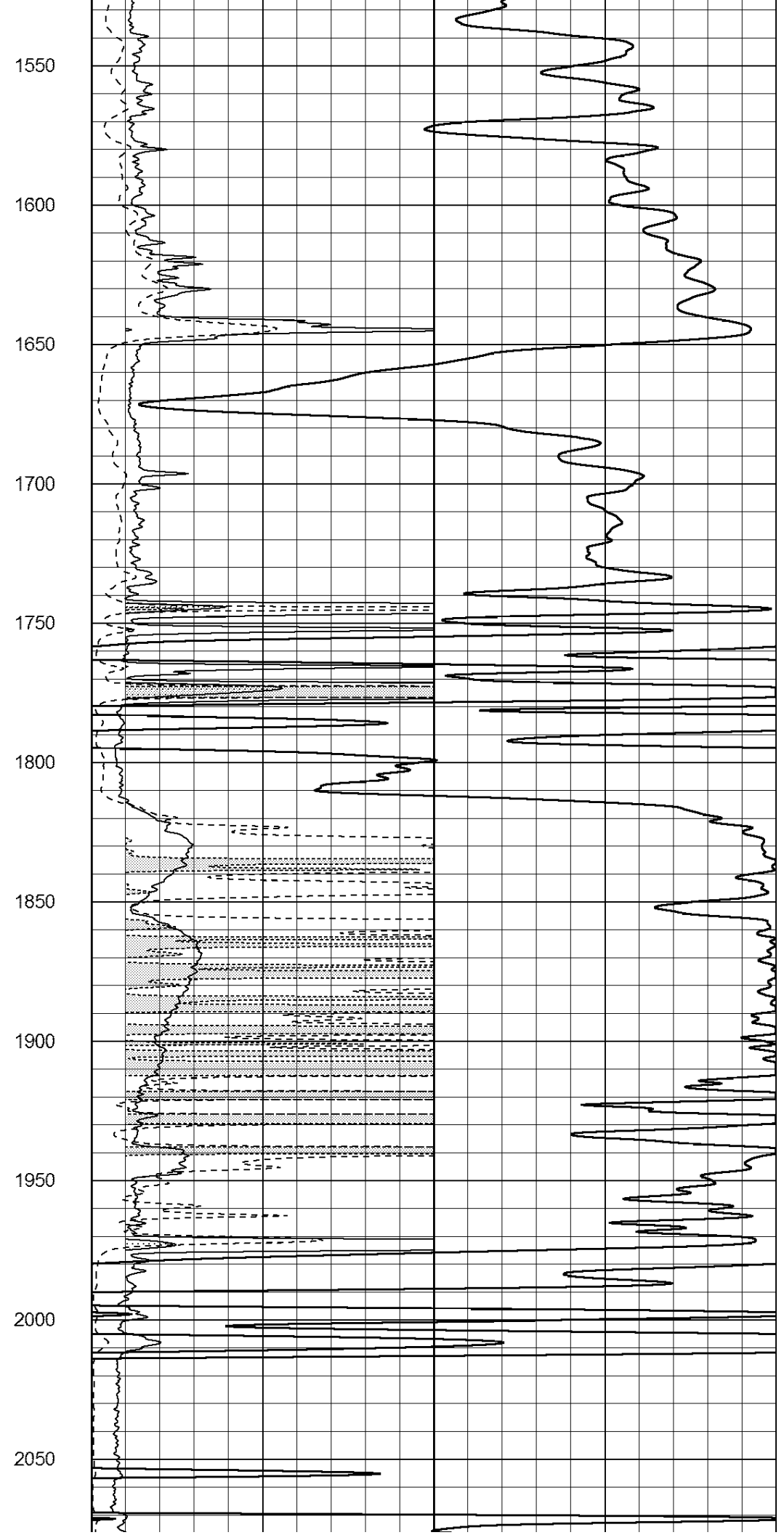
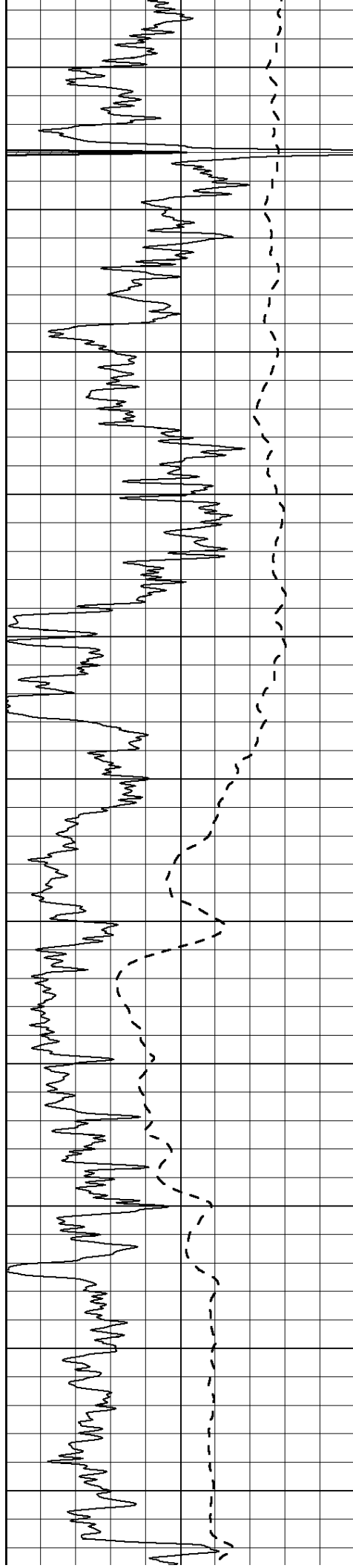
1350

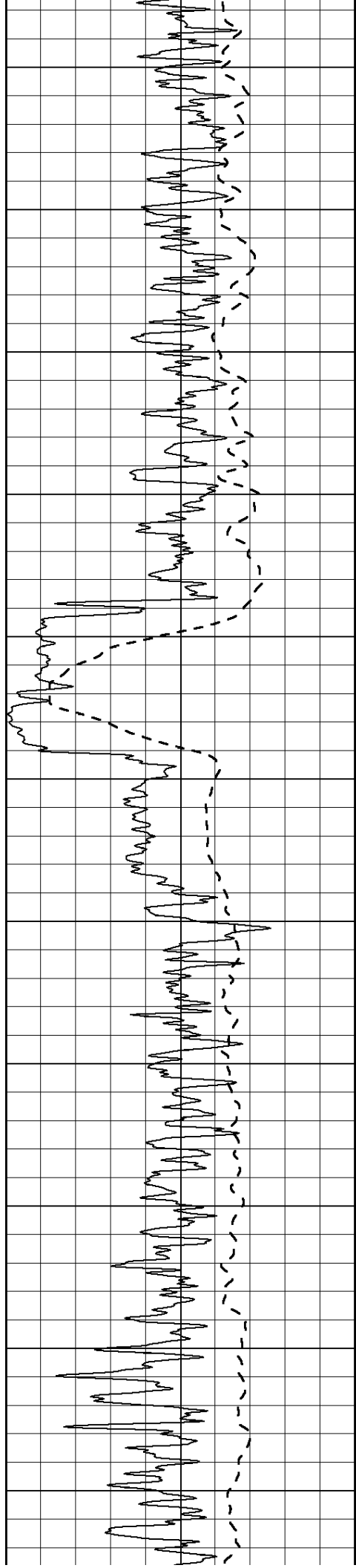
1400

1450

1500







2100

2150

2200

2250

2300

2350

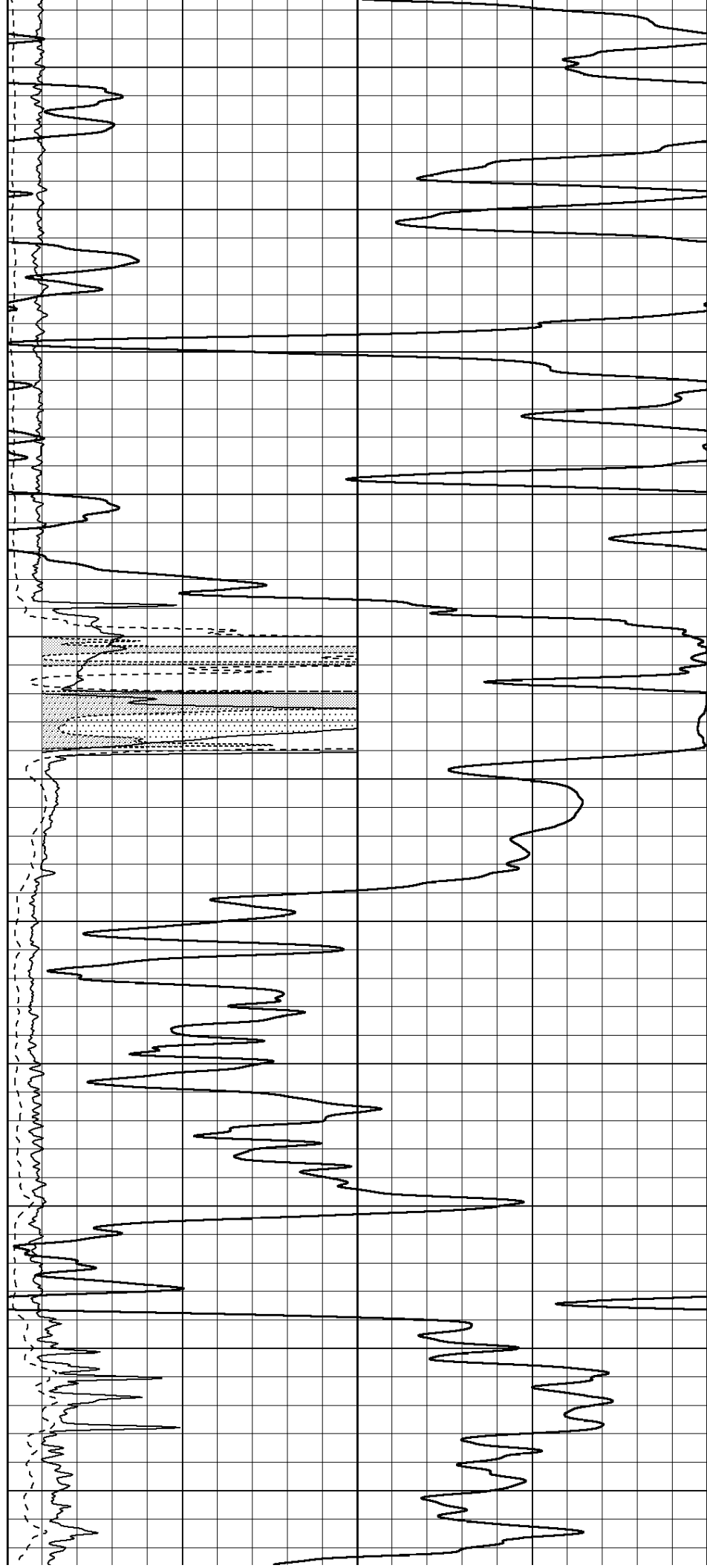
2400

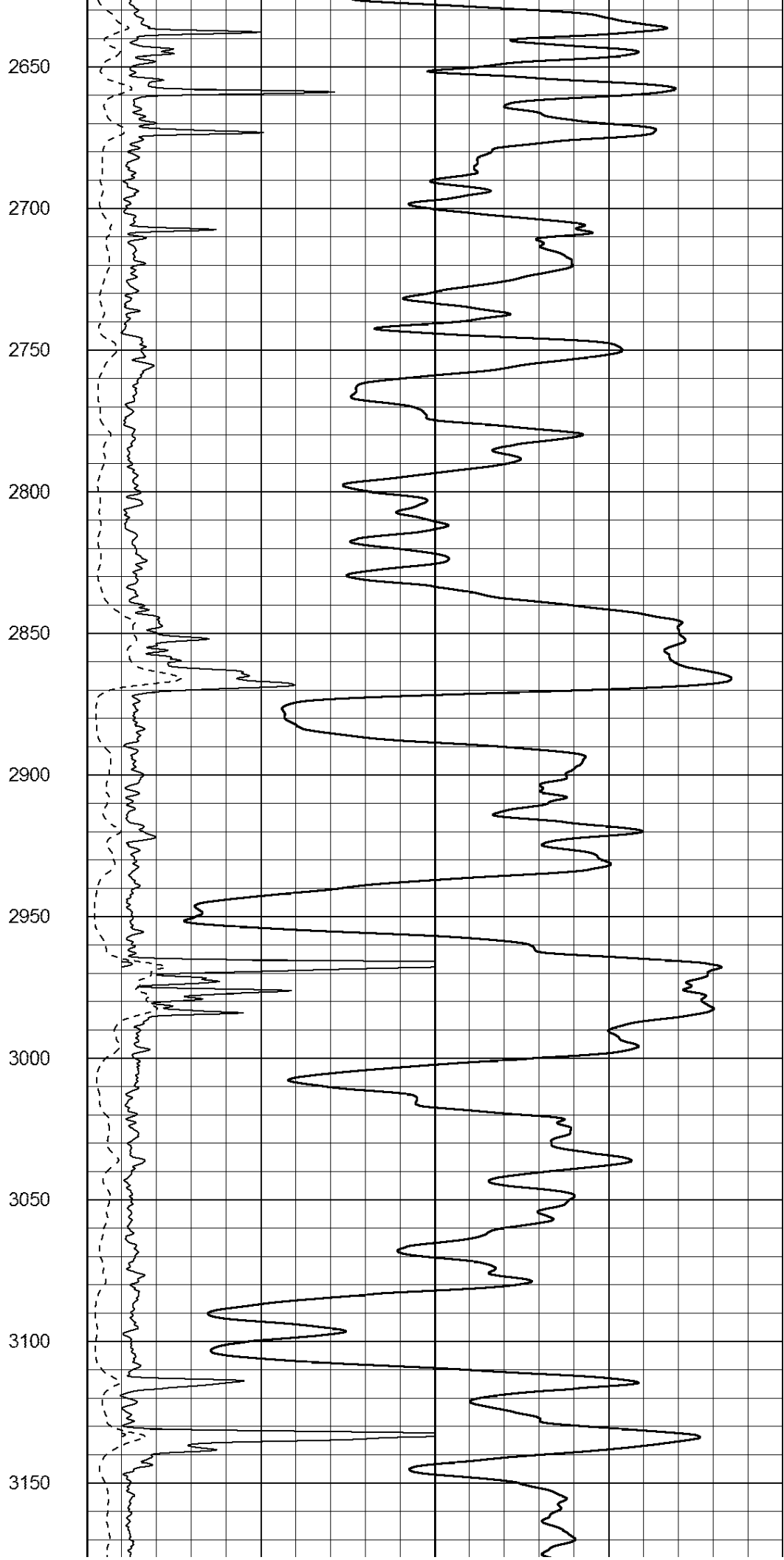
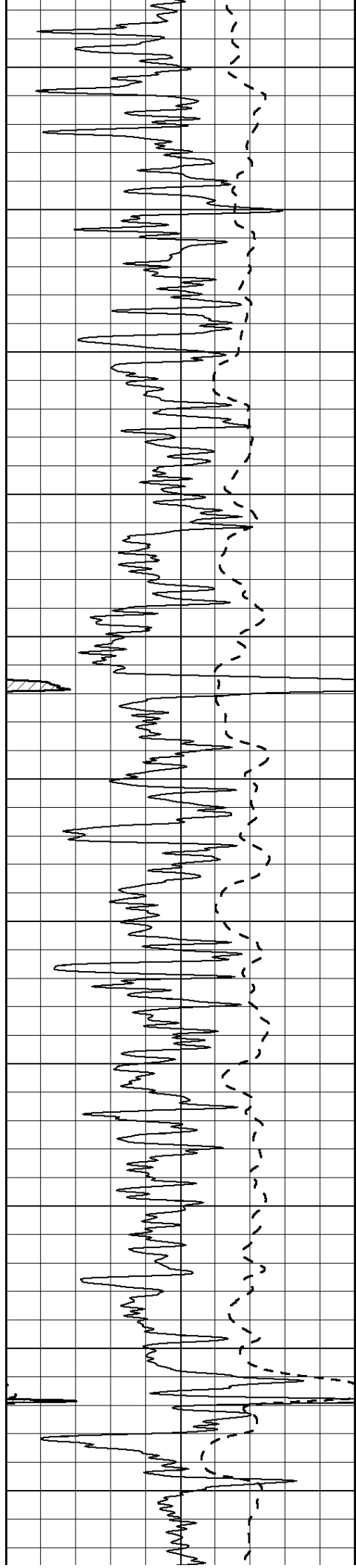
2450

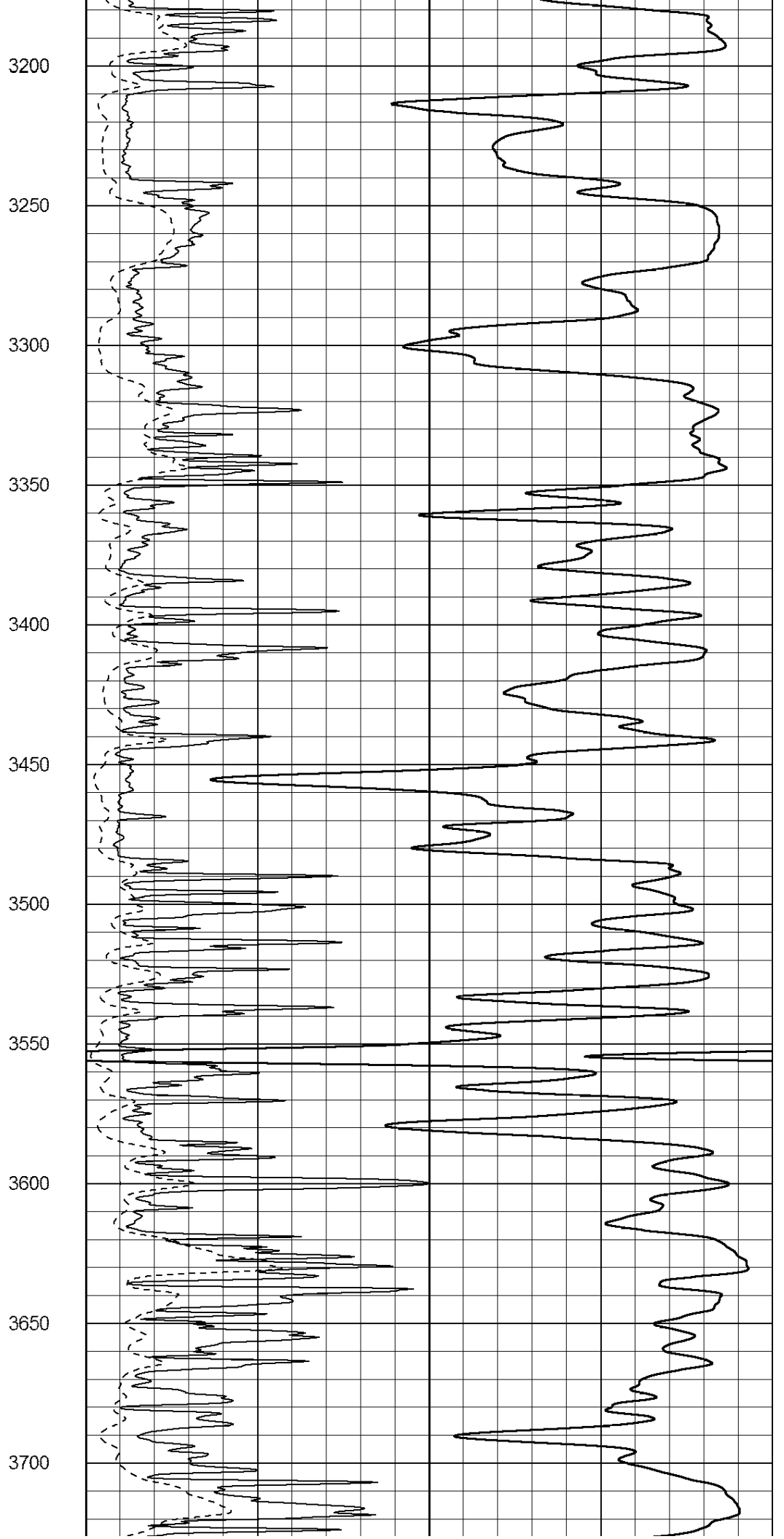
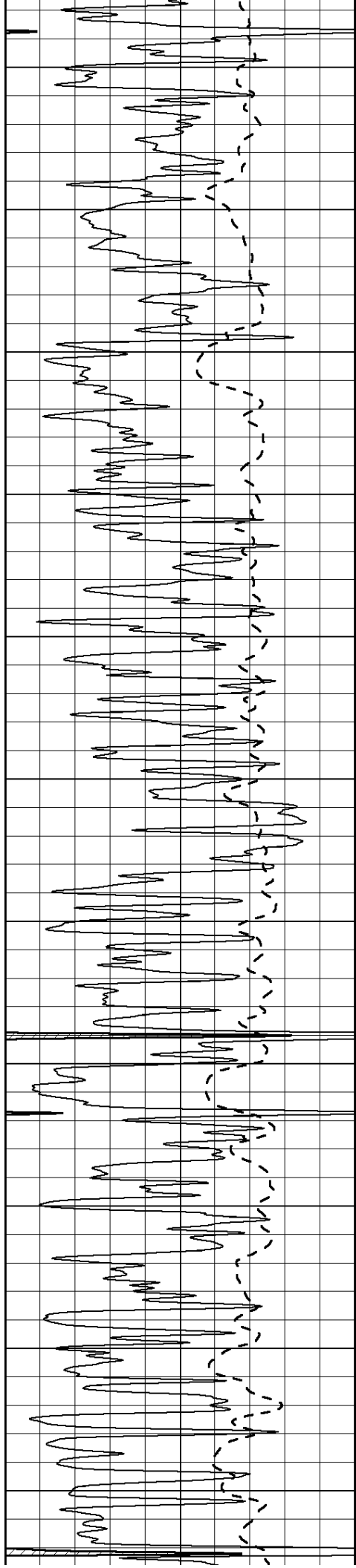
2500

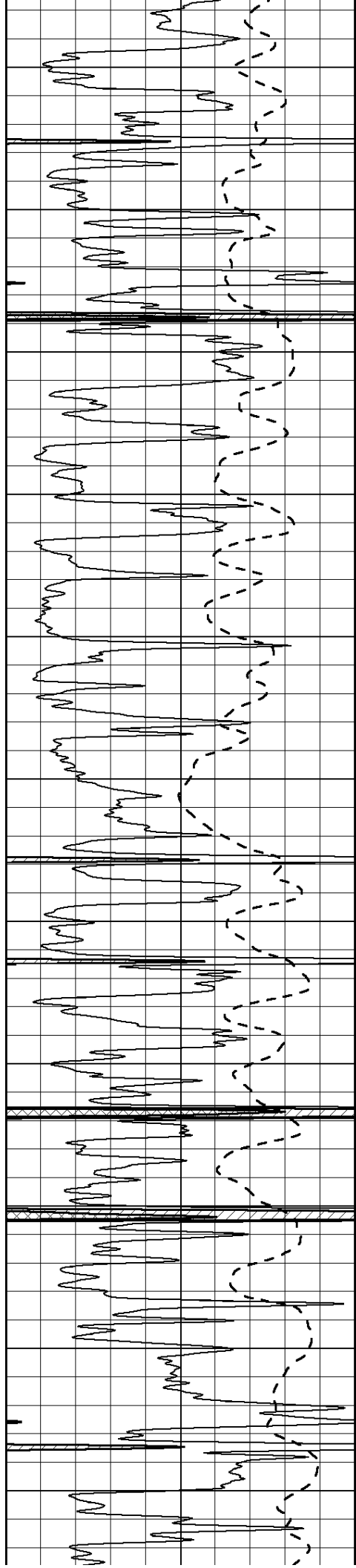
2550

2600









3750

3800

3850

3900

3950

4000

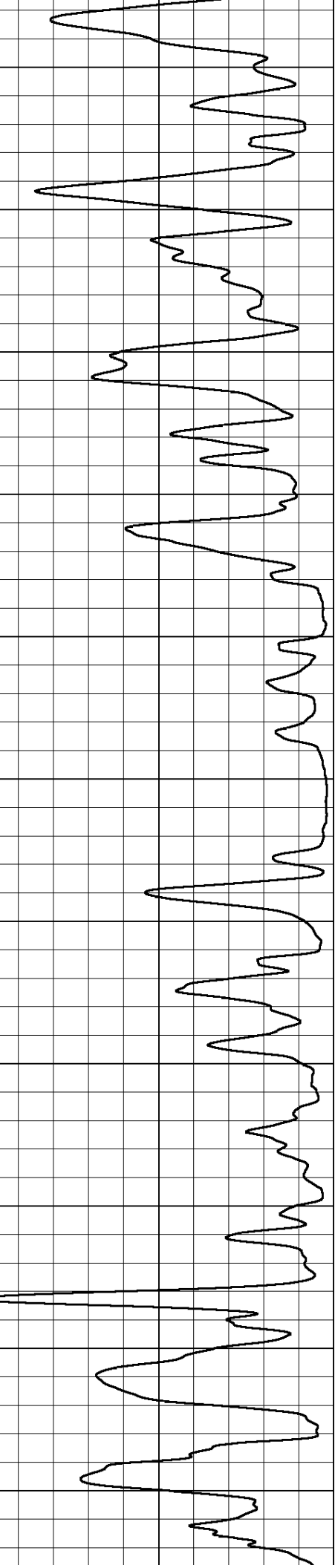
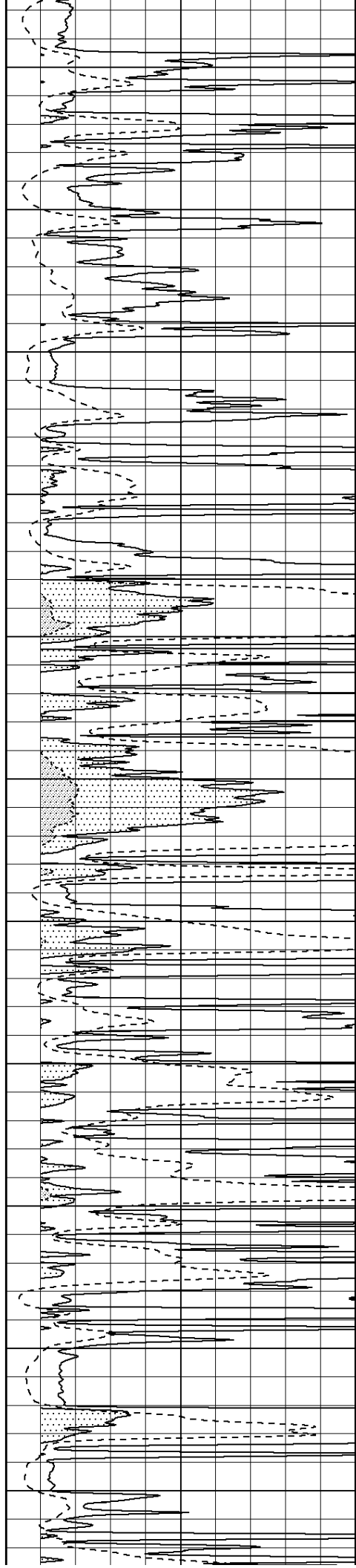
4050

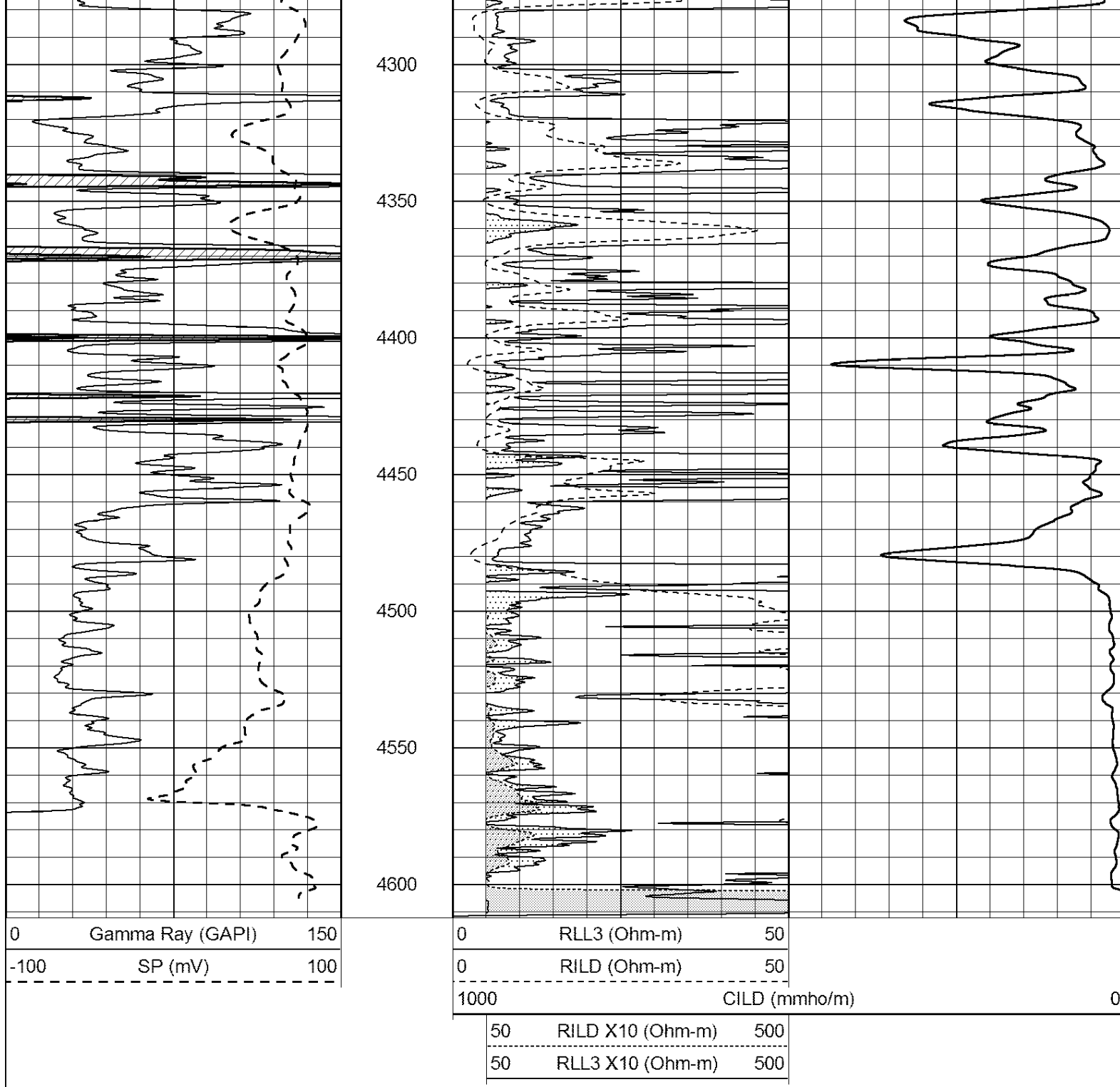
4100

4150

4200

4250

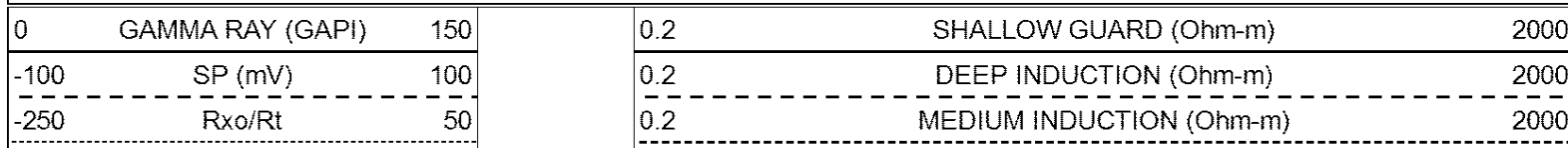


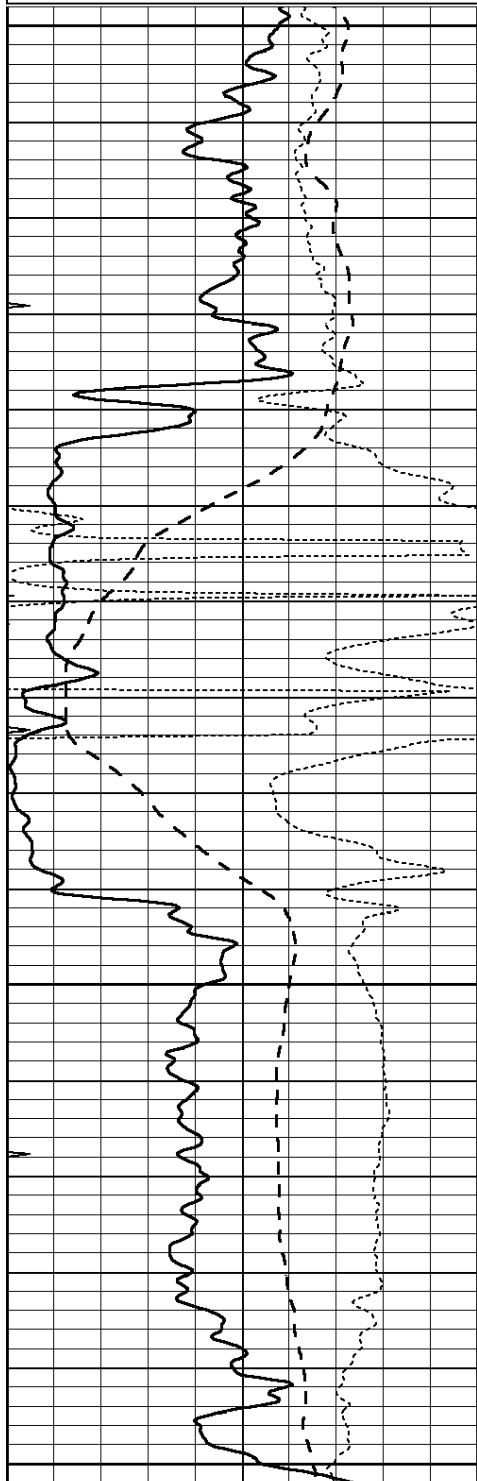


SUPERIOR
Hays,
Kansas

ANHYDRITE

Database File: 007285ddn.db
 Dataset Pathname: pass3.9
 Presentation Format: dil
 Dataset Creation: Thu Aug 25 15:53:05 2011 by Calc Open-Cased 110302
 Charted by: Depth in Feet scaled 1:240





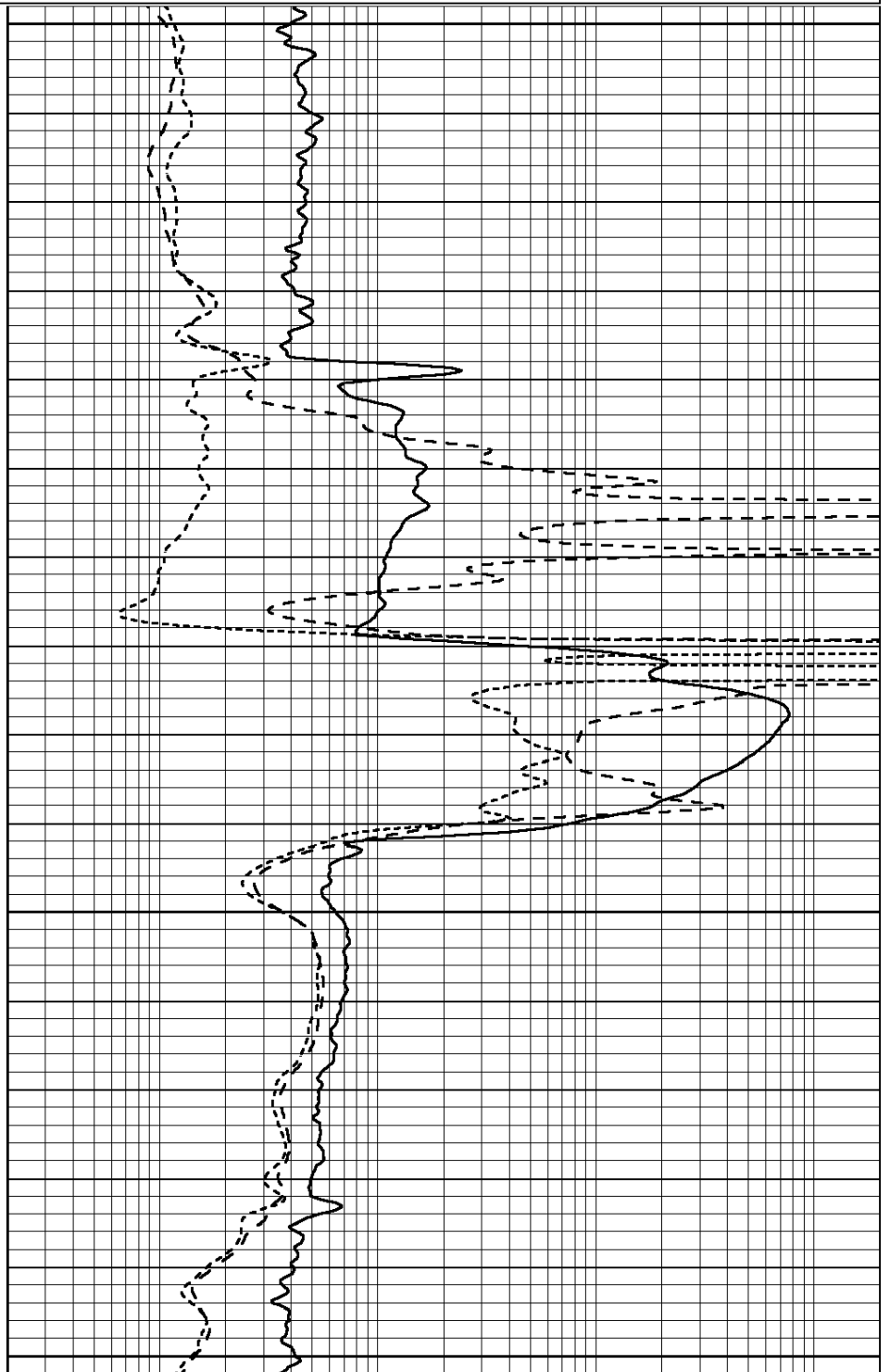
2250

2300

2350

2400

0	GAMMA RAY (GAPI)	150
-100	SP (mV)	100
-250	Rxo/Rt	50
0	MINMK	20



0.2	SHALLOW GUARD (Ohm-m)	2000
0.2	DEEP INDUCTION (Ohm-m)	2000
0.2	MEDIUM INDUCTION (Ohm-m)	2000



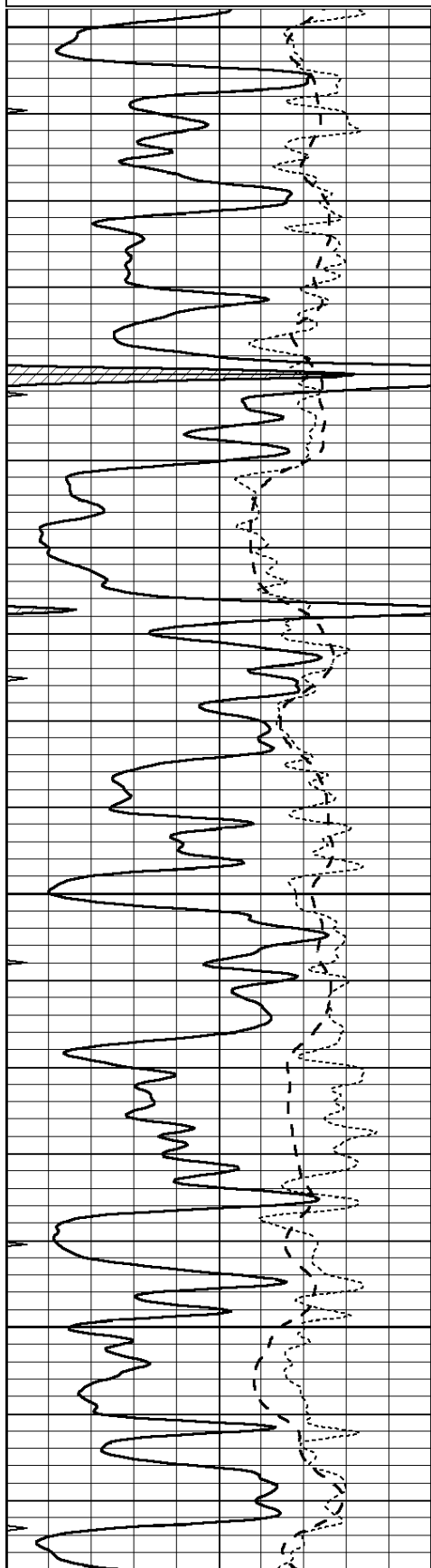
SUPERIOR
Hays,
Kansas

MAIN SECTION

Dataset Pathname: pass3.8
 Presentation Format: dil
 Dataset Creation: Thu Aug 25 15:52:36 2011 by Calc Open-Cased 110302
 Charted by: Depth in Feet scaled 1:240

0	GAMMA RAY (GAPI)	150
-100	SP (mV)	100
-250	Rxo/Rt	50
0	MINMK	20

0.2	SHALLOW GUARD (Ohm-m)	2000
0.2	DEEP INDUCTION (Ohm-m)	2000
0.2	MEDIUM INDUCTION (Ohm-m)	2000

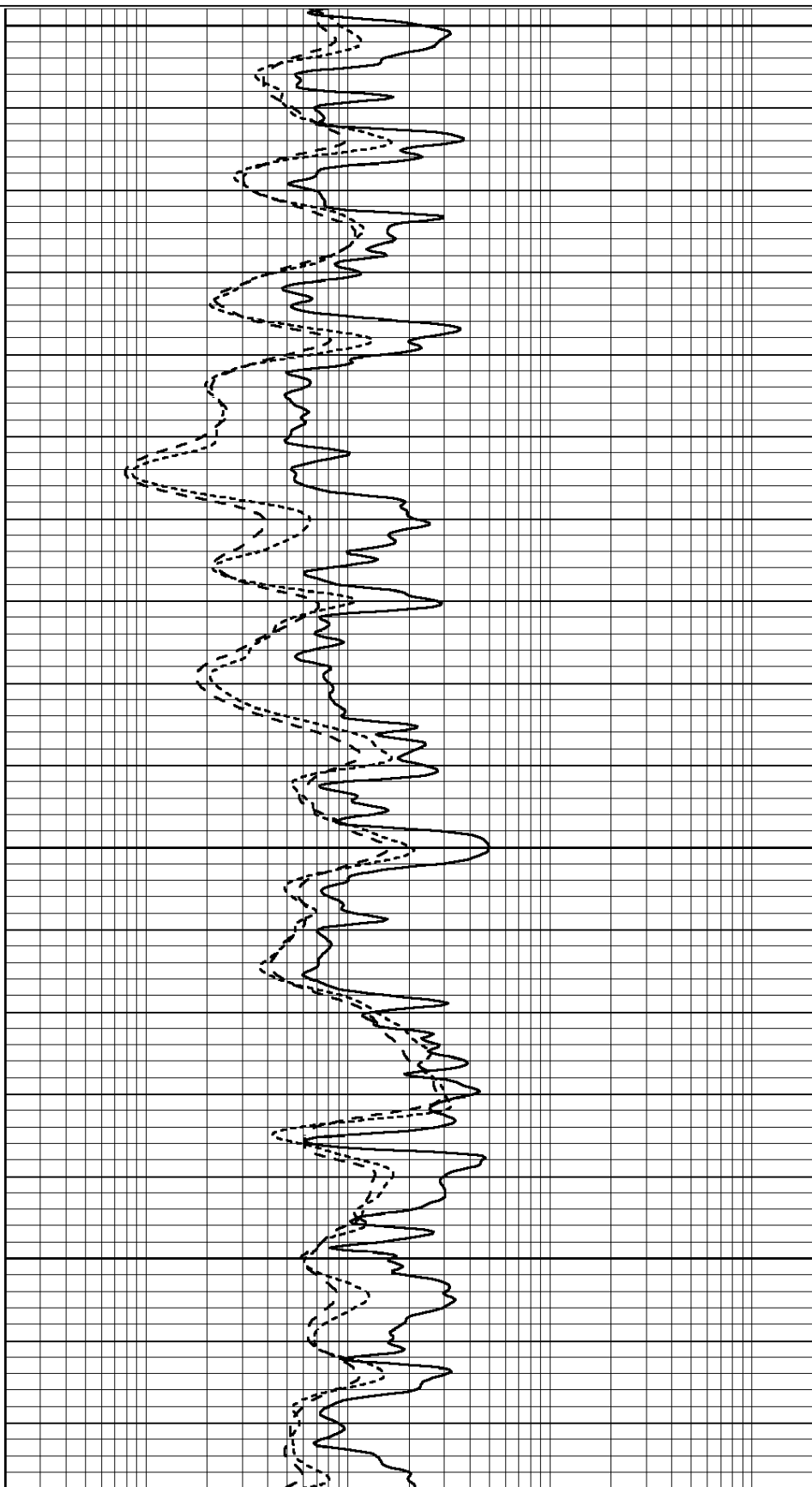


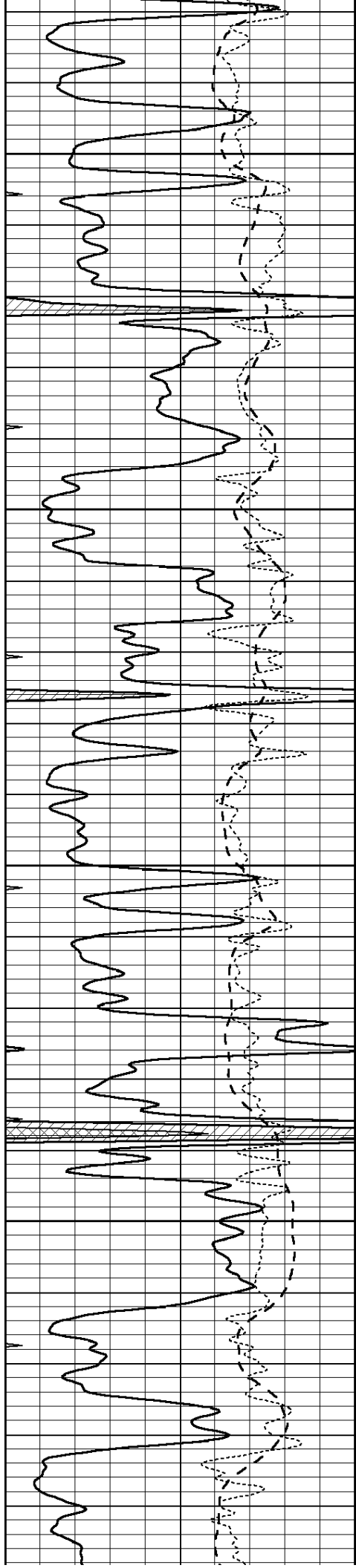
3500

3550

3600

3650



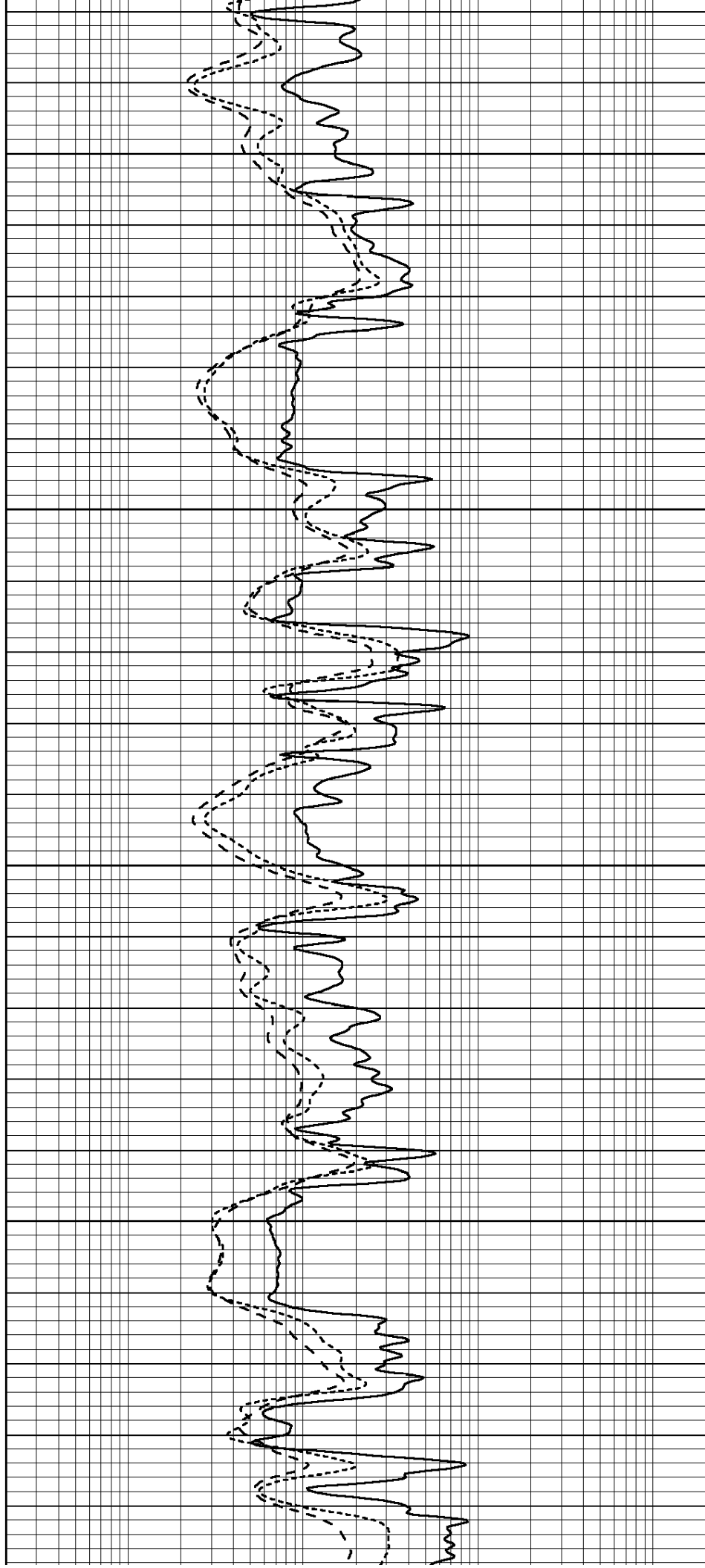


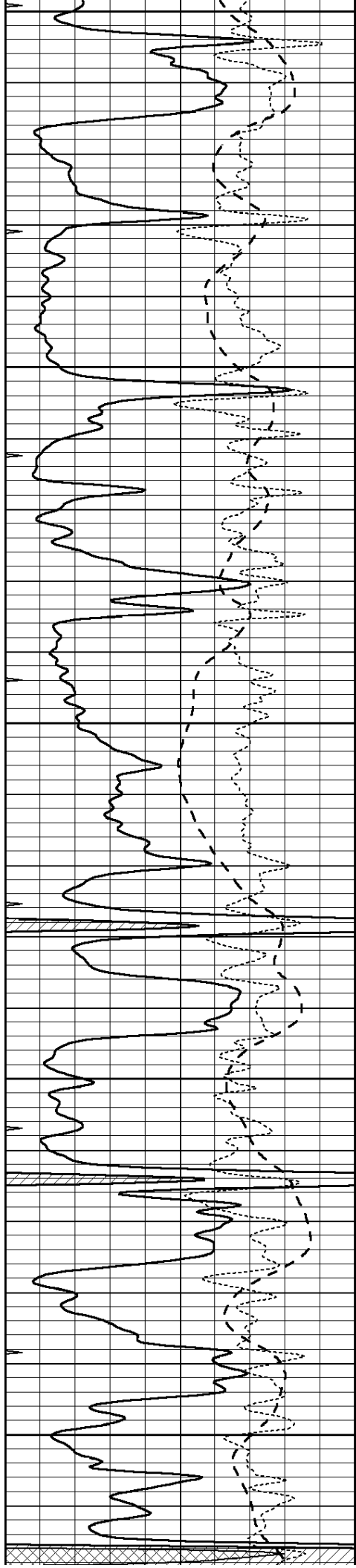
3700

3750

3800

3850





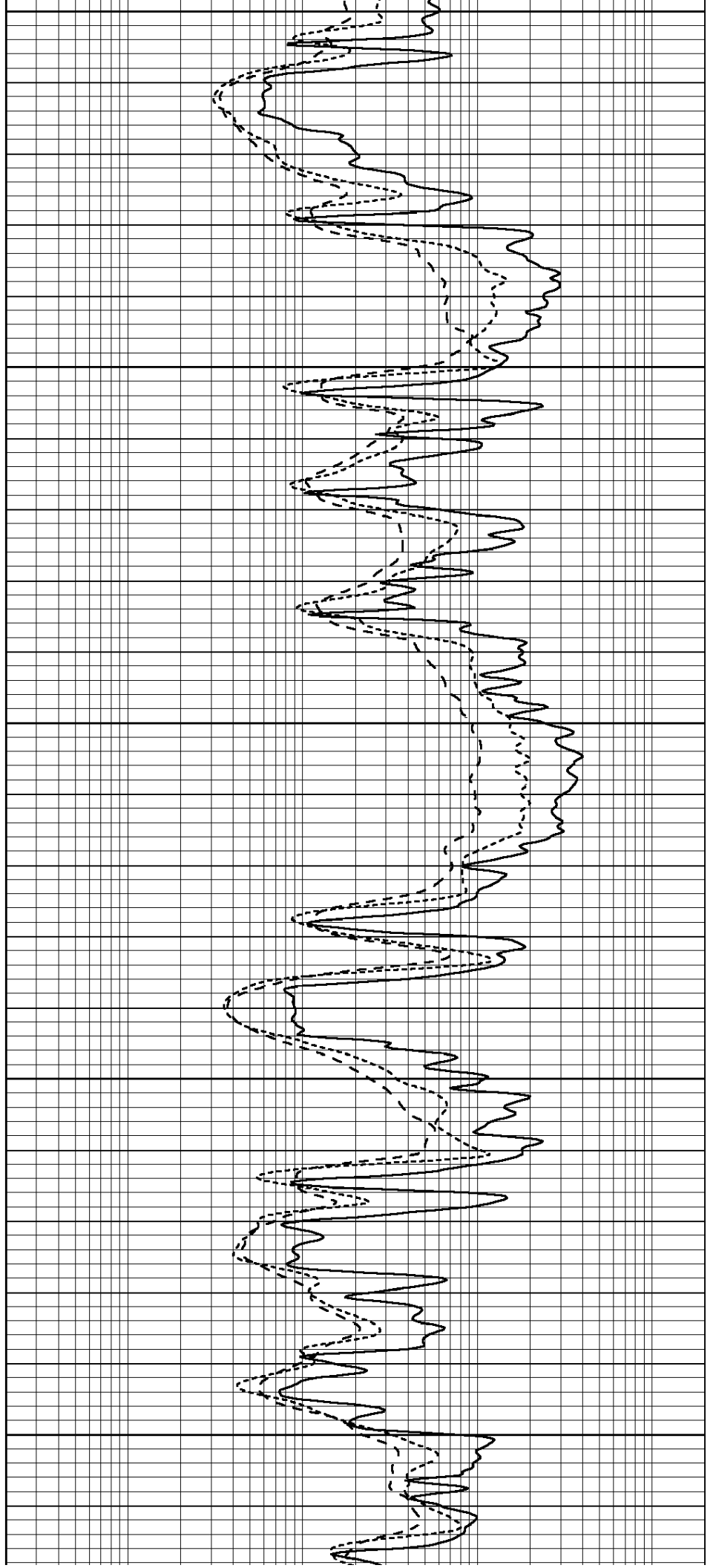
3900

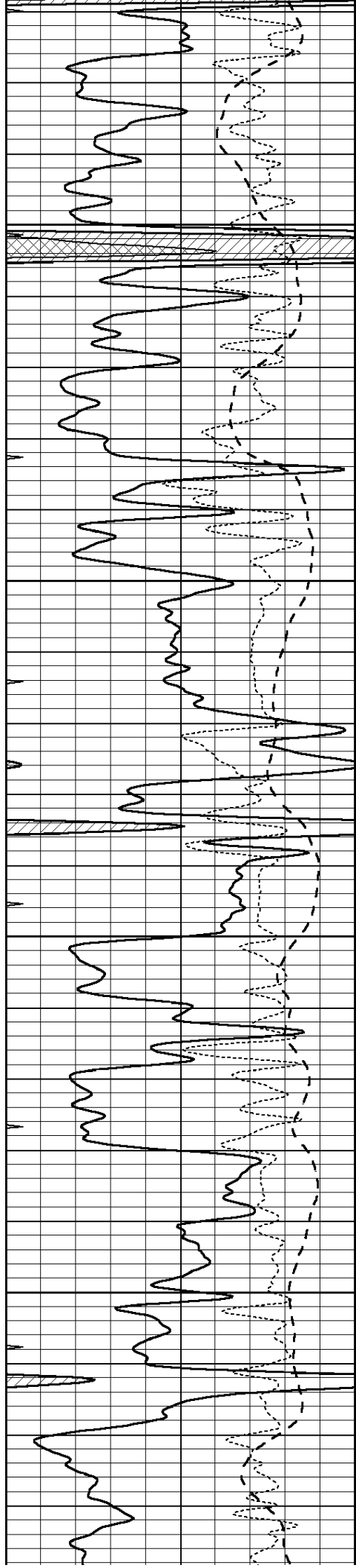
3950

4000

4050

4100



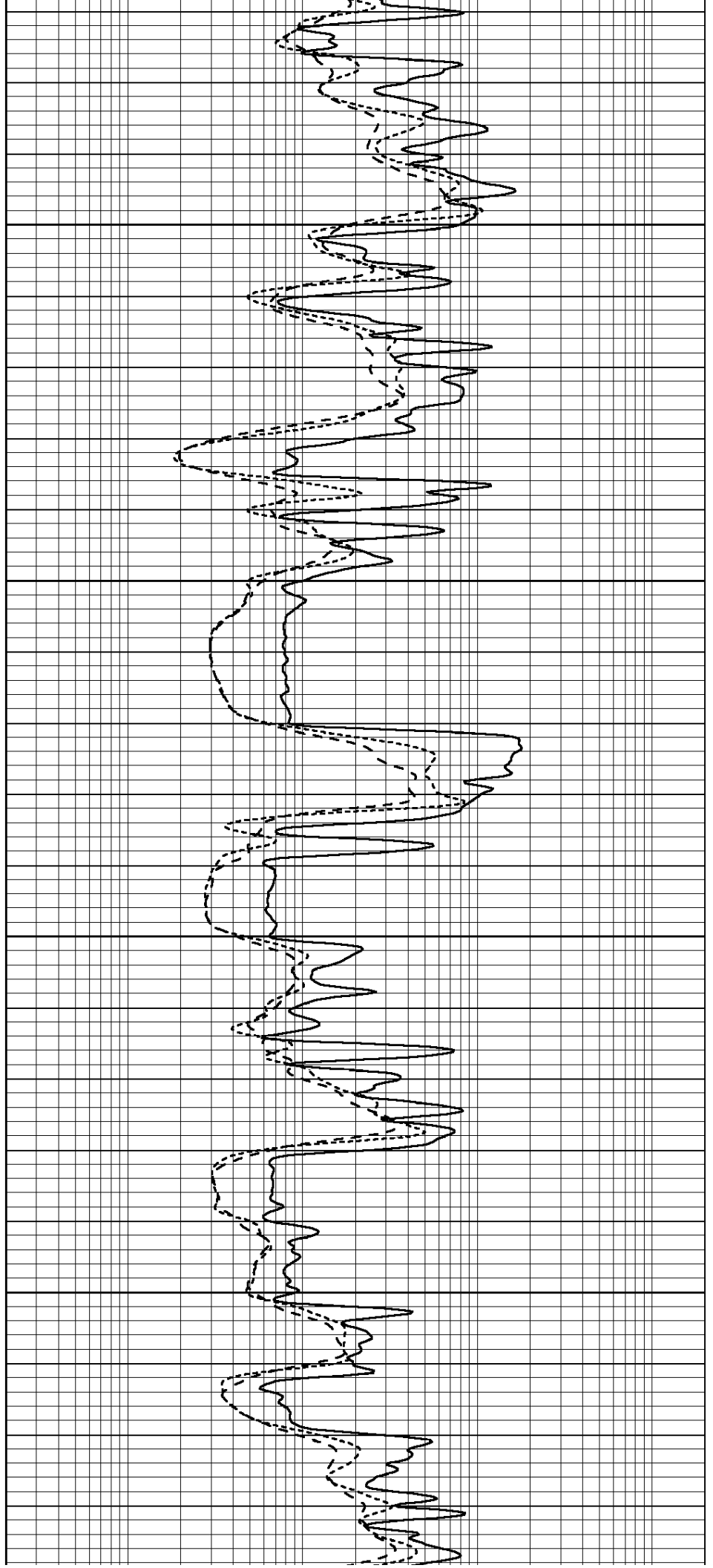


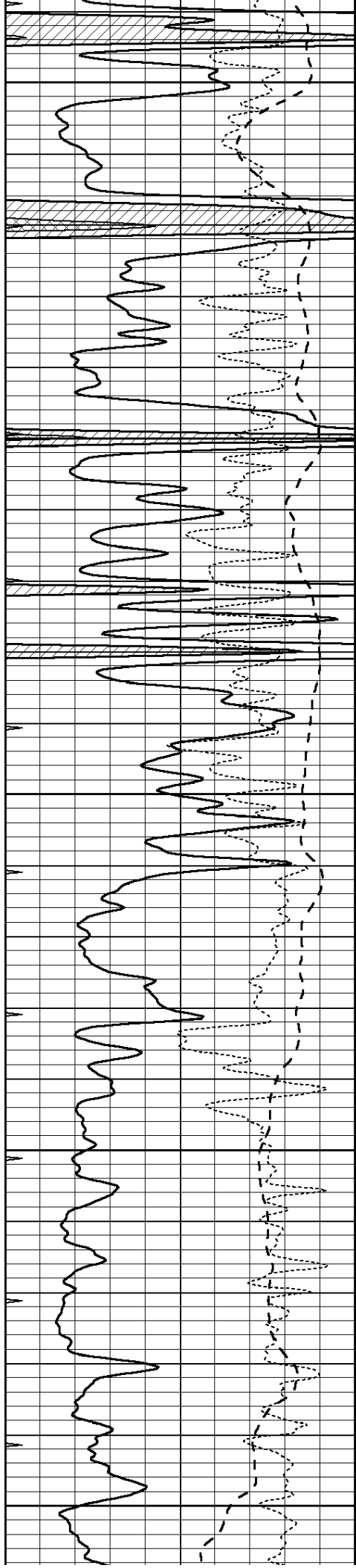
4150

4200

4250

4300





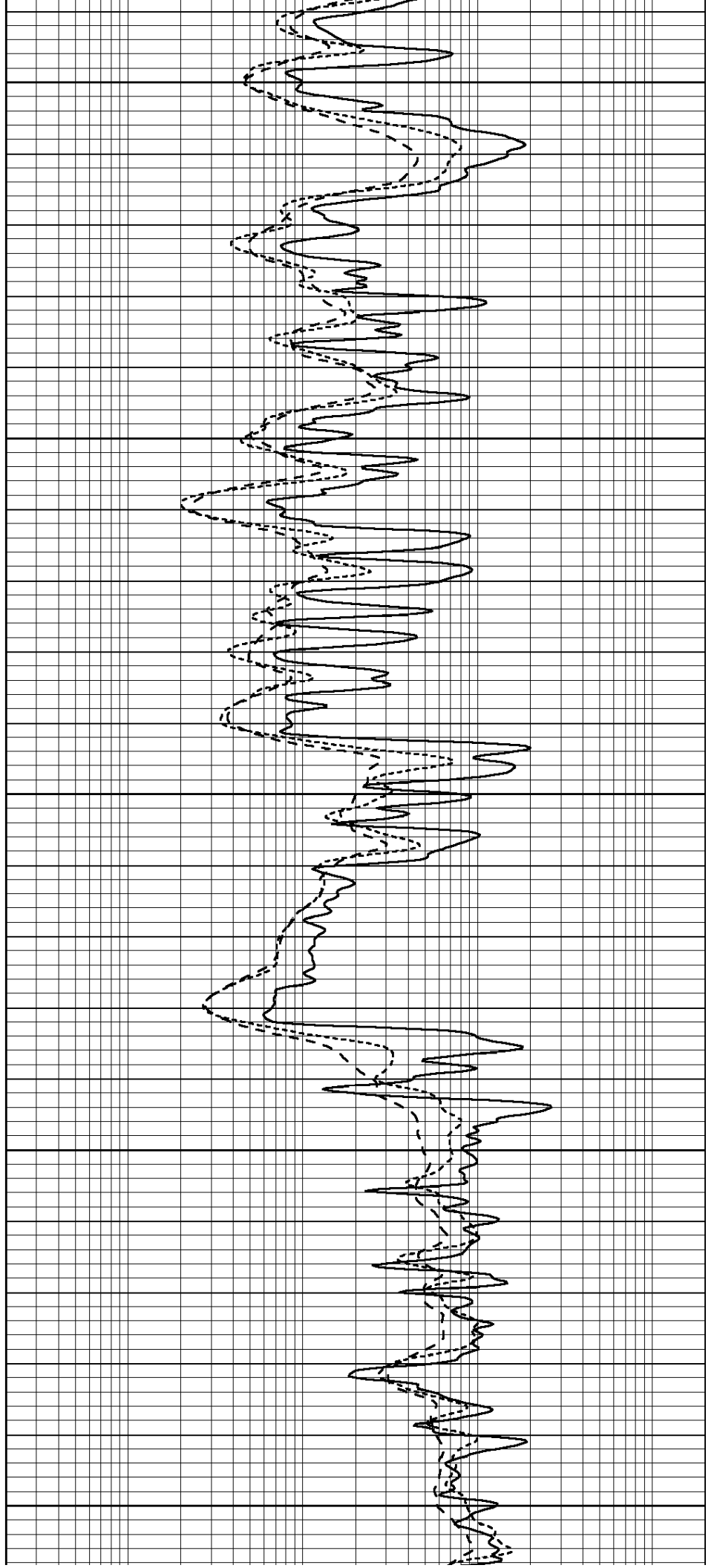
4350

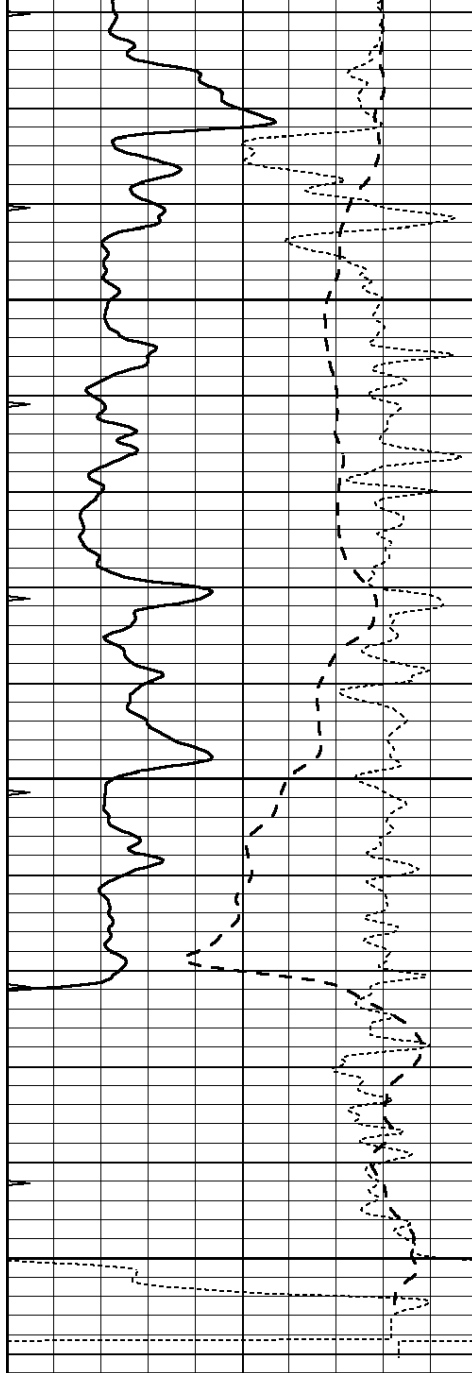
4400

4450

4500

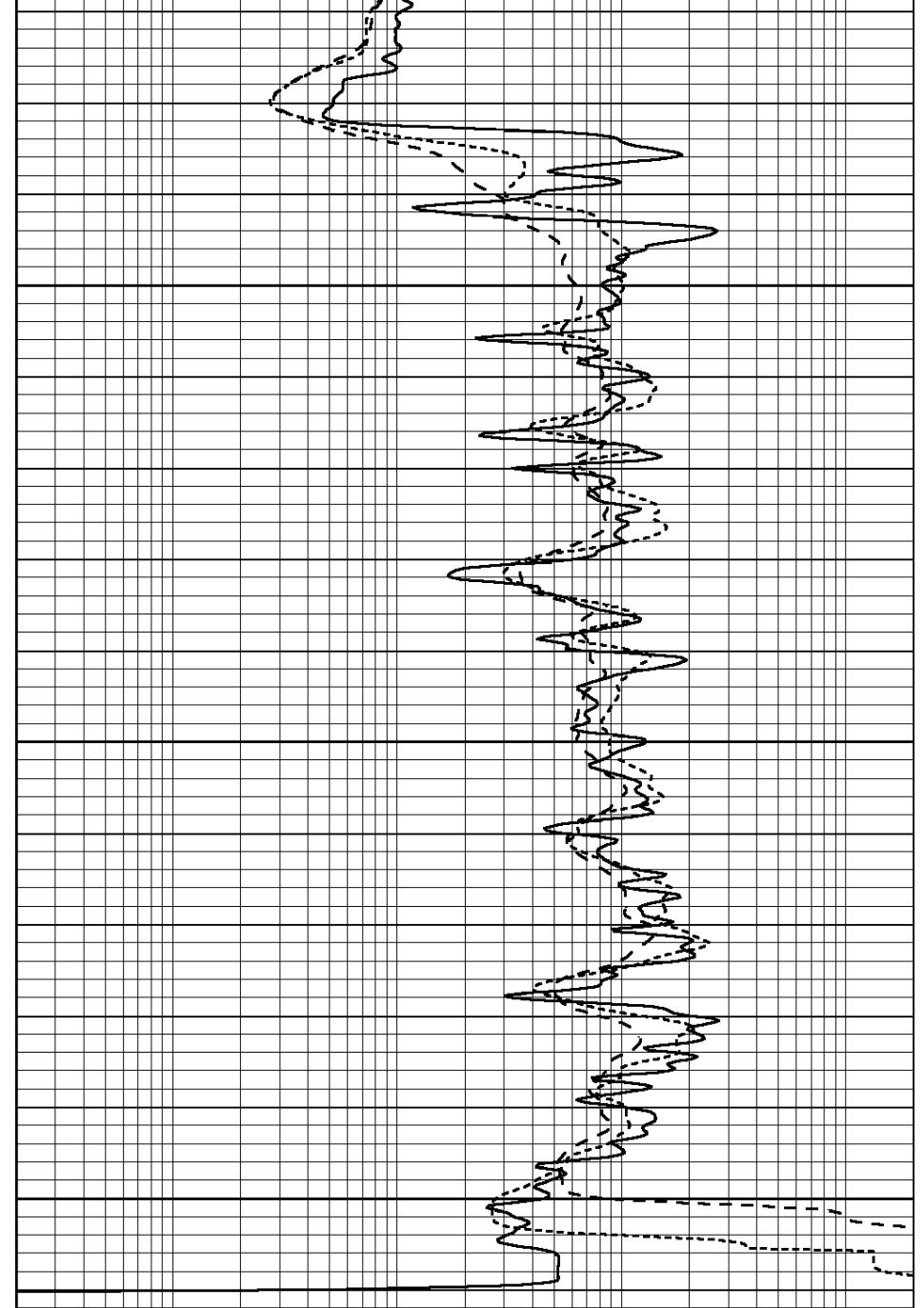
4550





0	GAMMA RAY (GAPI)	150
-100	SP (mV)	100
-250	Rxo/Rt	50
0	MINMK	20

4500
4550
4600



0.2	SHALLOW GUARD (Ohm-m)	2000
0.2	DEEP INDUCTION (Ohm-m)	2000
0.2	MEDIUM INDUCTION (Ohm-m)	2000

Calibration Report

Database File: 007285ddn.db
 Dataset Pathname: pass3.8
 Dataset Creation: Thu Aug 25 15:52:36 2011 by Calc Open-Cased 110302

Dual Induction Calibration Report

Serial-Model: DIL4-GEAR
 Performed: Thu Aug 25 14:23:22 2011

Readings		References		Results	
Loop:	Air	Loop	Air	Loop	m b

Deep	0.008	0.666	V	0.000	400.000	mmho/m	570.000	-1.000
Medium	-0.003	0.769	V	0.000	462.500	mmho/m	560.000	0.000
Internal:	Zero	Cal		Zero	Cal		m	b
Deep	0.013	0.651	V	0.000	400.000	mmho/m	627.541	-8.365
Medium	0.020	0.754	V	0.000	462.500	mmho/m	630.311	-12.549

Litho Density Calibration Report
Serial: 004N Model: PRB
Performed Tue Sep 08 13:49:55 2009

Litho Density Calibration

	Background	Magnesium	Aluminum	Sandstone	
Window 1	1535.8	11161.3	3721.6	12498.8	cps
Window 2	1402.6	9435.7	3219.7	10417.7	cps
Window 3	1077.6	4422.0	1779.2	4753.4	cps
Window 4	337.3	342.8	337.4	343.7	cps
Long Space	0.0	8033.1	1817.0	9015.1	cps
Short Space	1.2	1671.8	1138.1	1813.0	cps
Rho		1.7100	2.5900	1.3800	g/cc
Pe			2.5700	1.5500	
Rib Angle	: 45.5	Rib Slope	: 1.017	Density/Spine Ratio	: 0.573
Spine Angle	: 75.5	Spine Slope	: 3.865	Spine Intercept	: -19.7

Caliper

	Readings	Reference	
Low Ref	2.8	8.0	
High Ref	4.6	15.0	
	Gain: 3.8		Offset: -2.6

Compensated Neutron Calibration Report

Serial Number: NEU_11
Tool Model: G

CALIBRATION

Detector	Readings	Target	Normalization
Short Space	1.00 cps	1.00 cps	1.0000
Long Space	1.00 cps	1.00 cps	1.0000

Gamma Ray Calibration Report

Serial Number: GR1
Tool Model: OPEN
Performed: Thu Aug 25 14:22:53 2011

Calibrator Value: 200.0 GAPI

Background Reading: 3.0 cps
Calibrator Reading: 186.0 cps

Sensitivity: 0.2500 GAPI/cps