



SUPERIOR
Hays,
Kansas

**COMPENSATED
DENSITY / NEUTRON
LOG**

Company RITCHIE EXPLORATION, INC.
Well #1 SHIPLEY 28 AD UNIT
Field ANTELOPE RIDGE
County GOVE
State KANSAS

Company RITCHIE EXPLORATION, INC.
Well #1 SHIPLEY 28 AD UNIT
Field ANTELOPE RIDGE
County GOVE State KANSAS

Location: API # : 15-063-21934-0000
2570' FNL & 2301' FEL
70' N. & 9' E. OF W/2 - W/2 - E/2
SEC 28 TWP 13S RGE 31W

Permanent Datum GROUND LEVEL Elevation 2833
Log Measured From KELLY BUSHING 10' A.G.L.
Drilling Measured From KELLY BUSHING

Other Services
DIL
Elevation
K.B. 2843
D.F. 2841
G.L. 2833

Date	8/25/11
Run Number	ONE
Depth Driller	4605
Depth Logger	4608
Bottom Logged Interval	4584
Top Log Interval	3500
Casing Driller	8 5/8"@217'
Casing Logger	217
Bit Size	7 7/8"
Type Fluid in Hole	CHEMICAL MUD
Density / Viscosity	8.9163
pH / Fluid Loss	10.0/8.0
Source of Sample	FLOWLINE
Rm @ Meas. Temp	.600@100F
Rmt @ Meas. Temp	.450@100F
Rmc @ Meas. Temp	.720@100F
Source of Rmf / Rmc	MEASUREMENT
Rm @ BHT	.496@121F
Time Circulation Stopped	2 HOURS
Time Logger on Bottom	2:00 P.M.
Maximum Recorded Temperature	121F
Equipment Number	4010
Location	HAYS, KANSAS
Recorded By	JEFF LUEBBERS
Witnessed By	TED JOCHEMS

<<< Fold Here >>>

All interpretations are opinions based on inferences from electrical or other measurements and we cannot and do not guarantee the accuracy or correctness of any interpretation, and we shall not, except in the case of gross or willful negligence on our part, be liable or responsible for any loss, costs, damages, or expenses incurred or sustained by anyone resulting from any interpretation made by any of our officers, agents or employees. These interpretations are also subject to our general terms and conditions set out in our current Price Schedule.

Comments

THANK YOU FOR USING SUPERIOR WELL SERVICE HAYS, KANSAS (785) 628-6395
DIRECTIONS
OAKLEY, KS. (JUNCTION OF OLD 40 & HWY 83) 13 S. ON HWY 83 TO "QUAIL RD.", 3E., 2S., 1 1/2E., S. IN

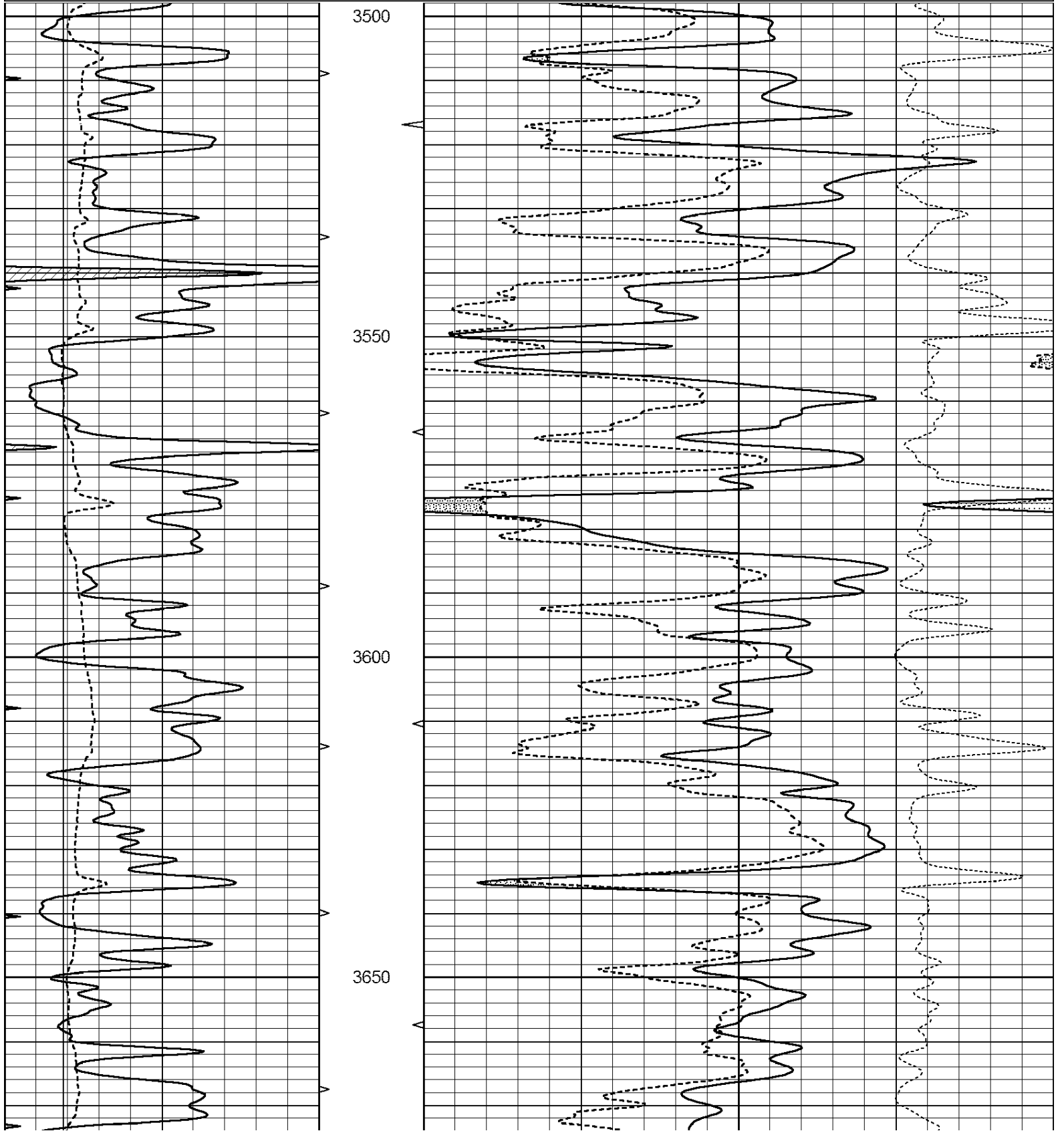


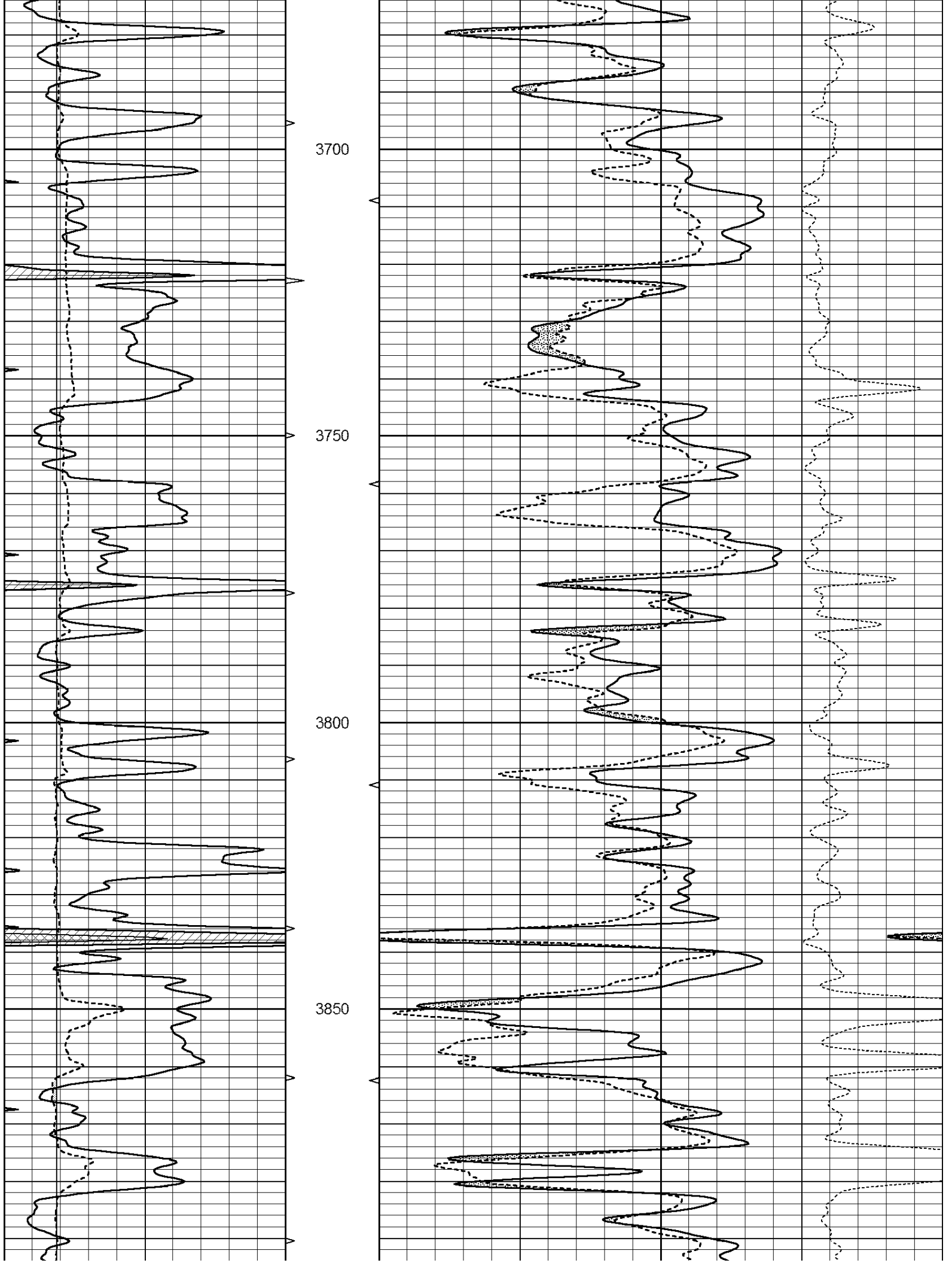
SUPERIOR
Hays,
Kansas

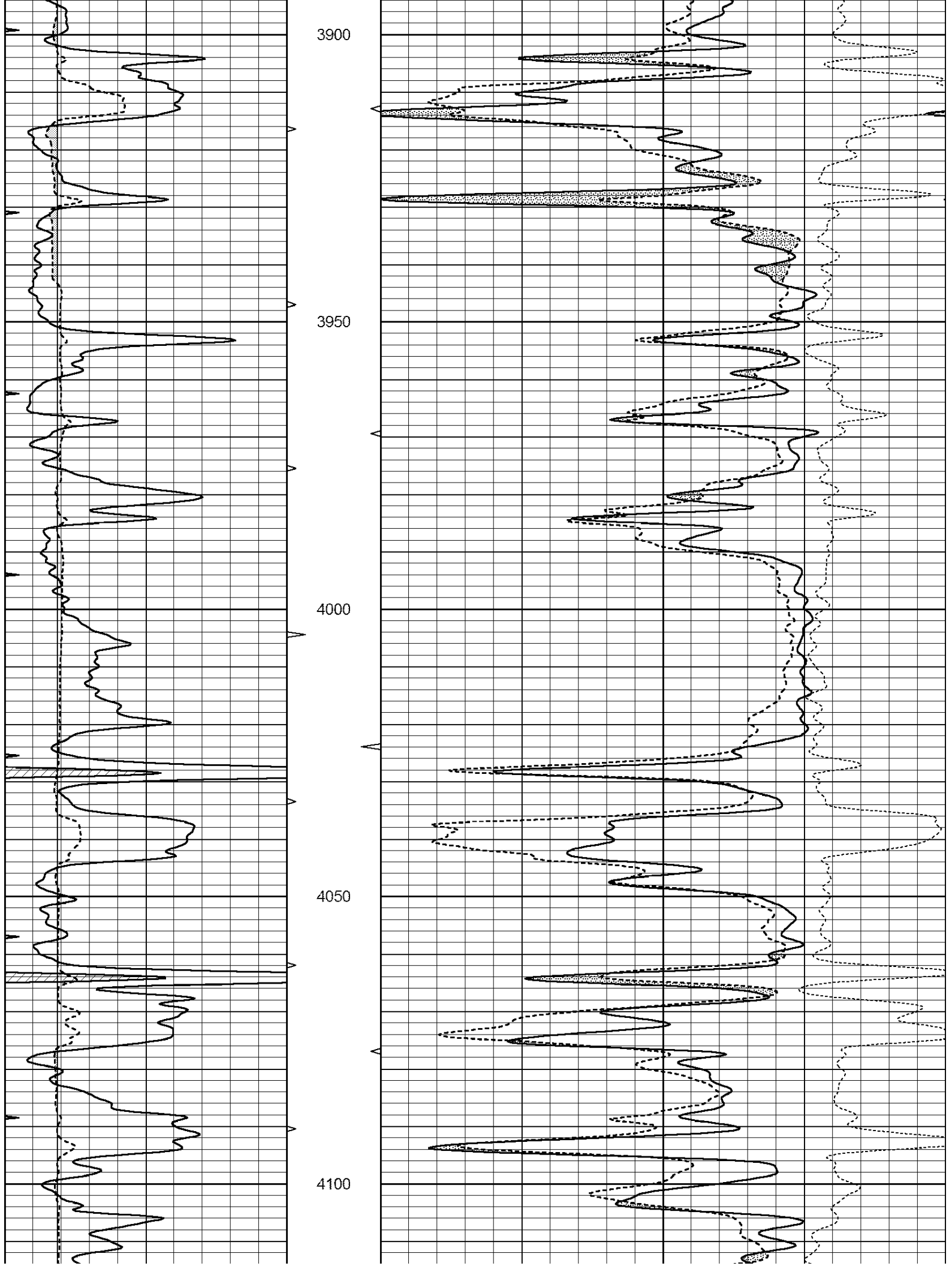
MAIN SECTION

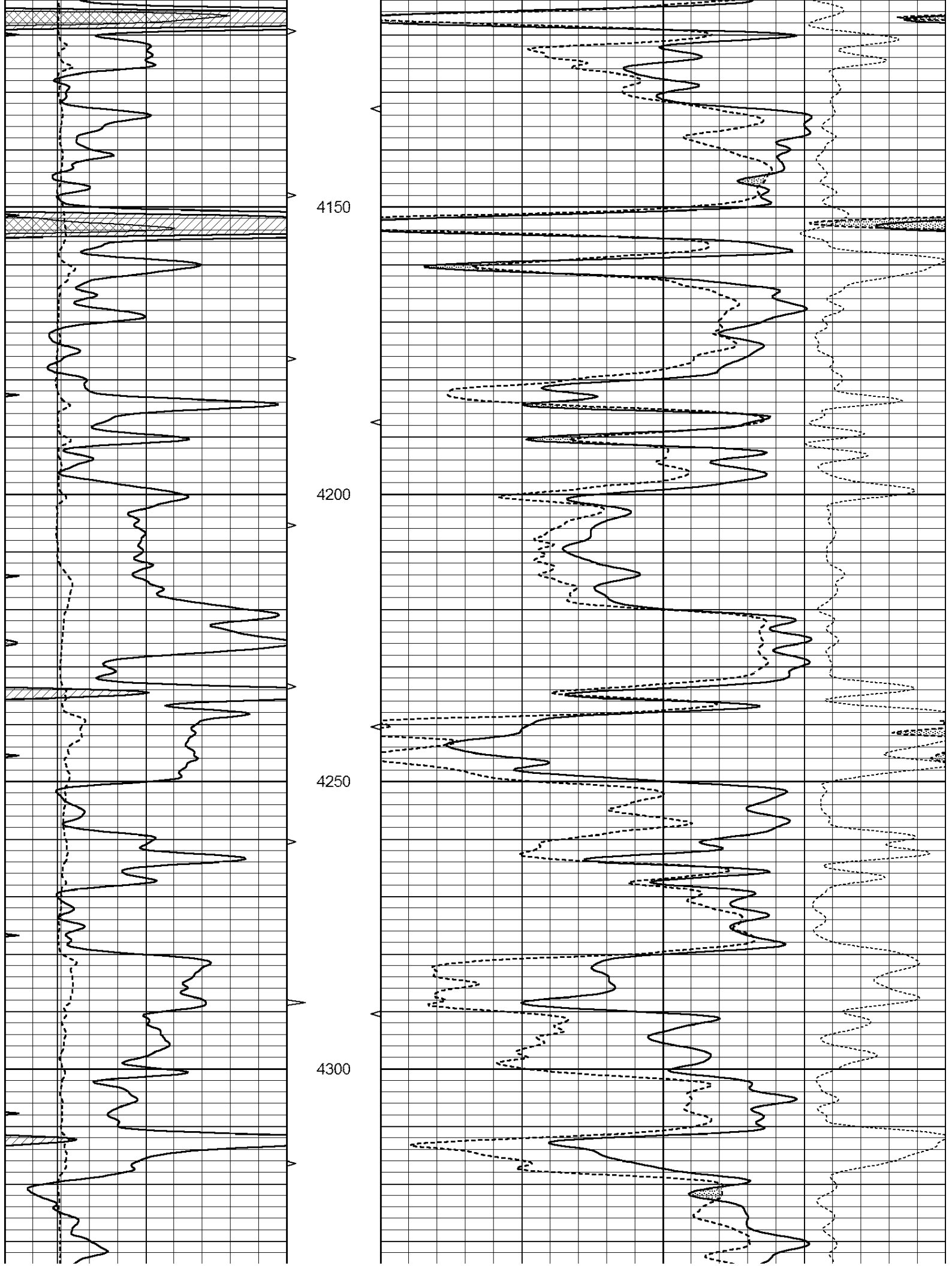
Database File: 007285ddn.db
 Dataset Pathname: pass3.5
 Presentation Format: den_neu
 Dataset Creation: Thu Aug 25 15:26:16 2011
 Charted by: Depth in Feet scaled 1:240

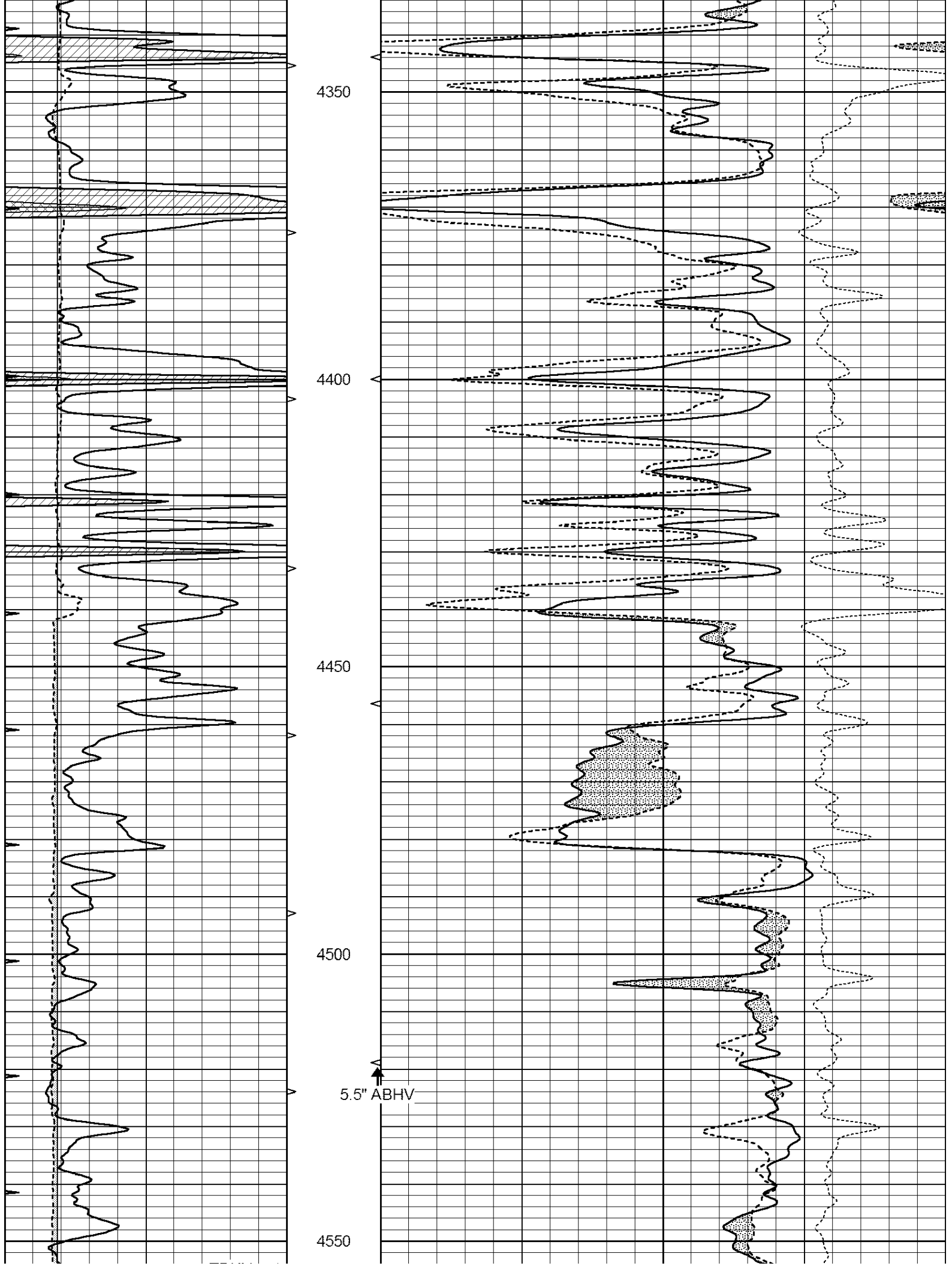
0	GAMMA RAY (GAPI)	150	ABHV	30	COMPENSATED DENSITY (pu)	-10
6	CALIPER (in)	16	10 (ft3)	0 30	COMPENSATED NEUTRON (pu)	-10
0	MINMK	20	TBHV		-0.25 CORRECTION (g/cc)	0.25
			0 (ft3)	10		

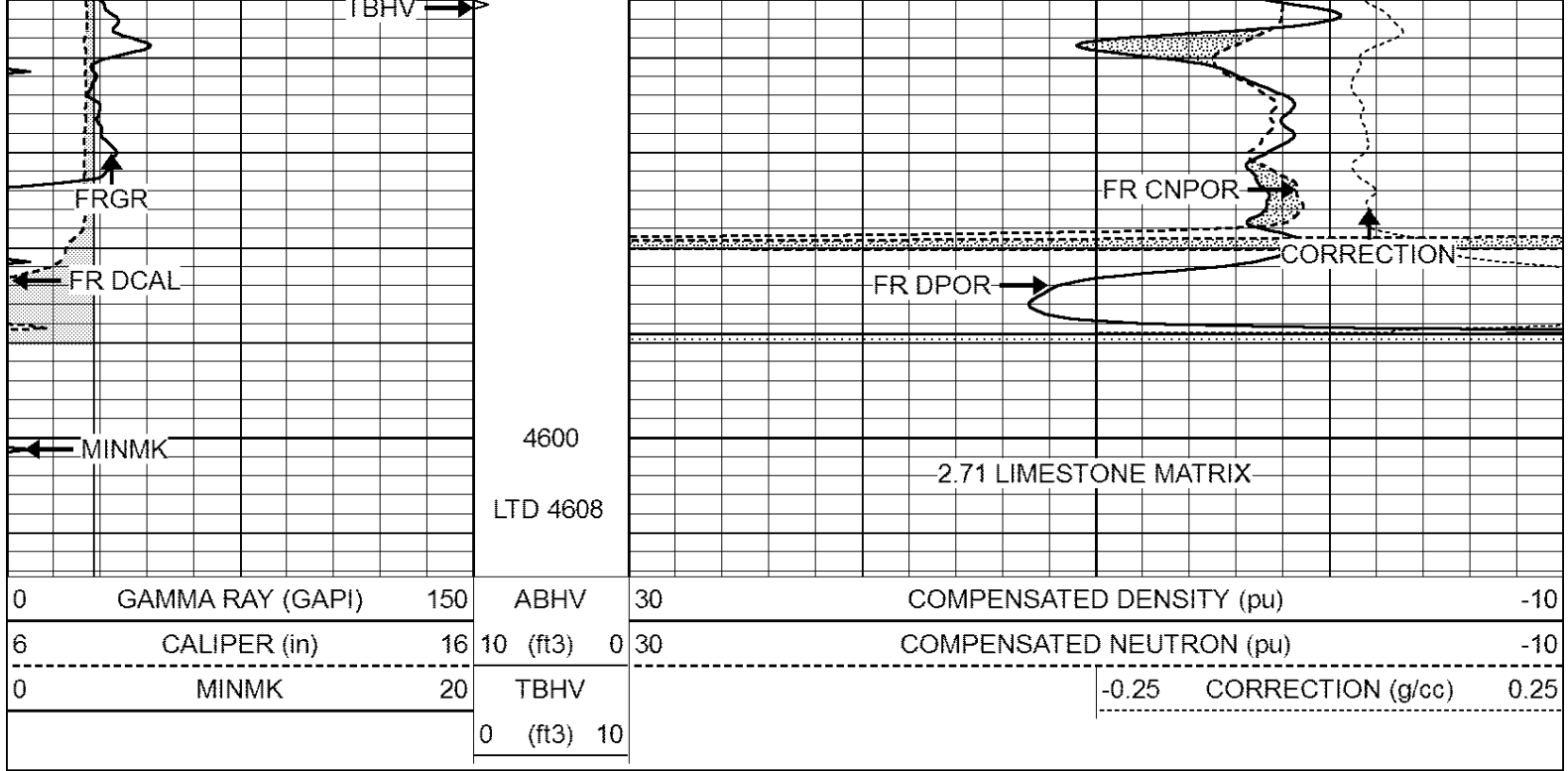








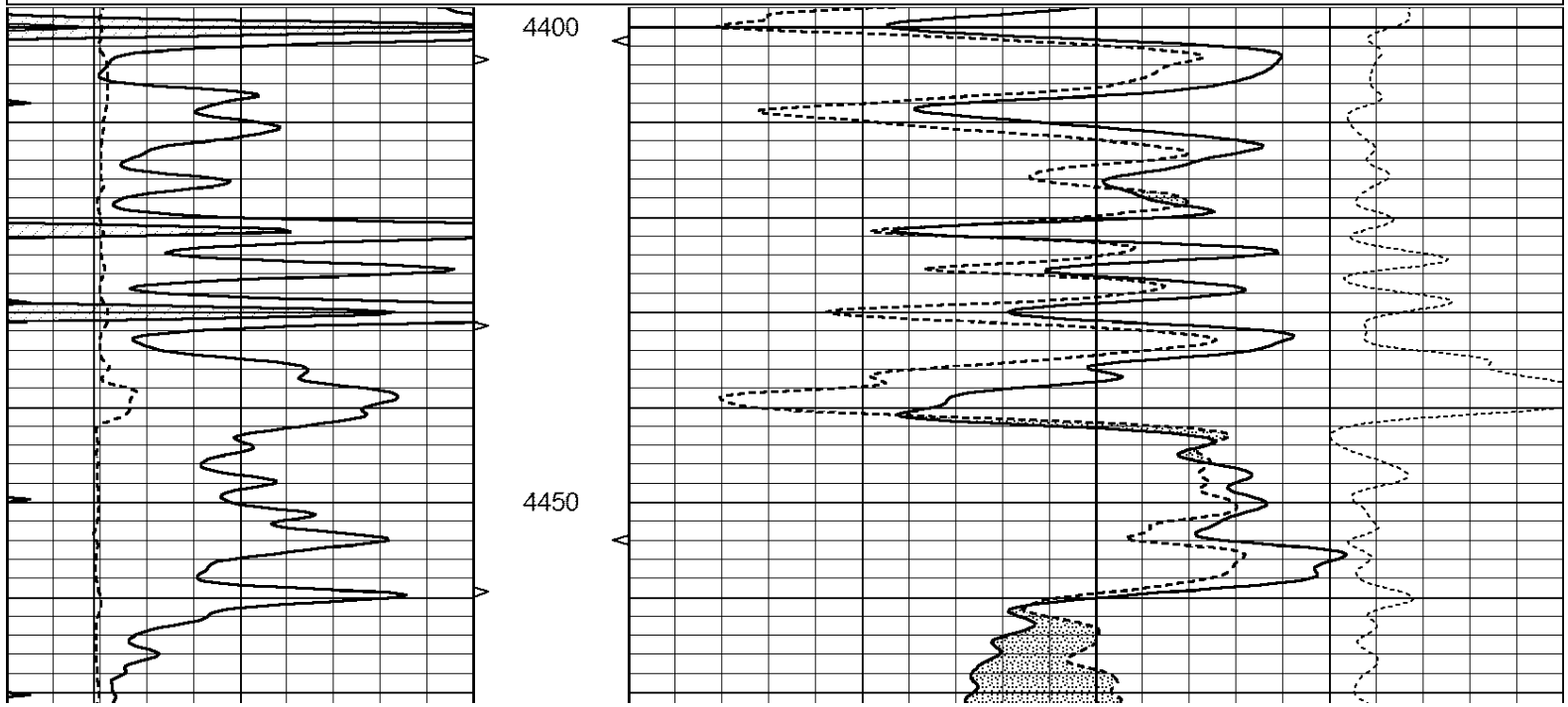
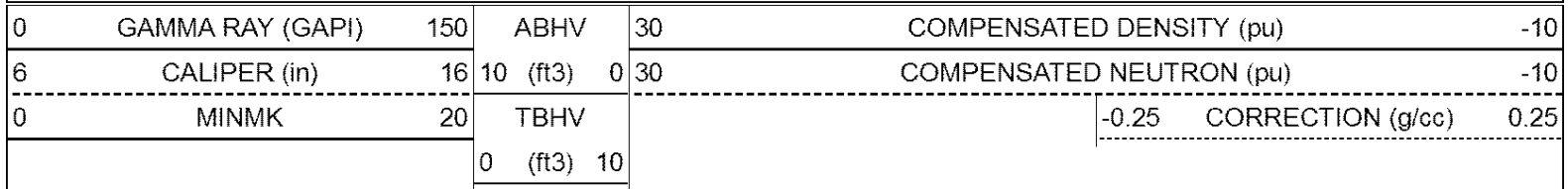


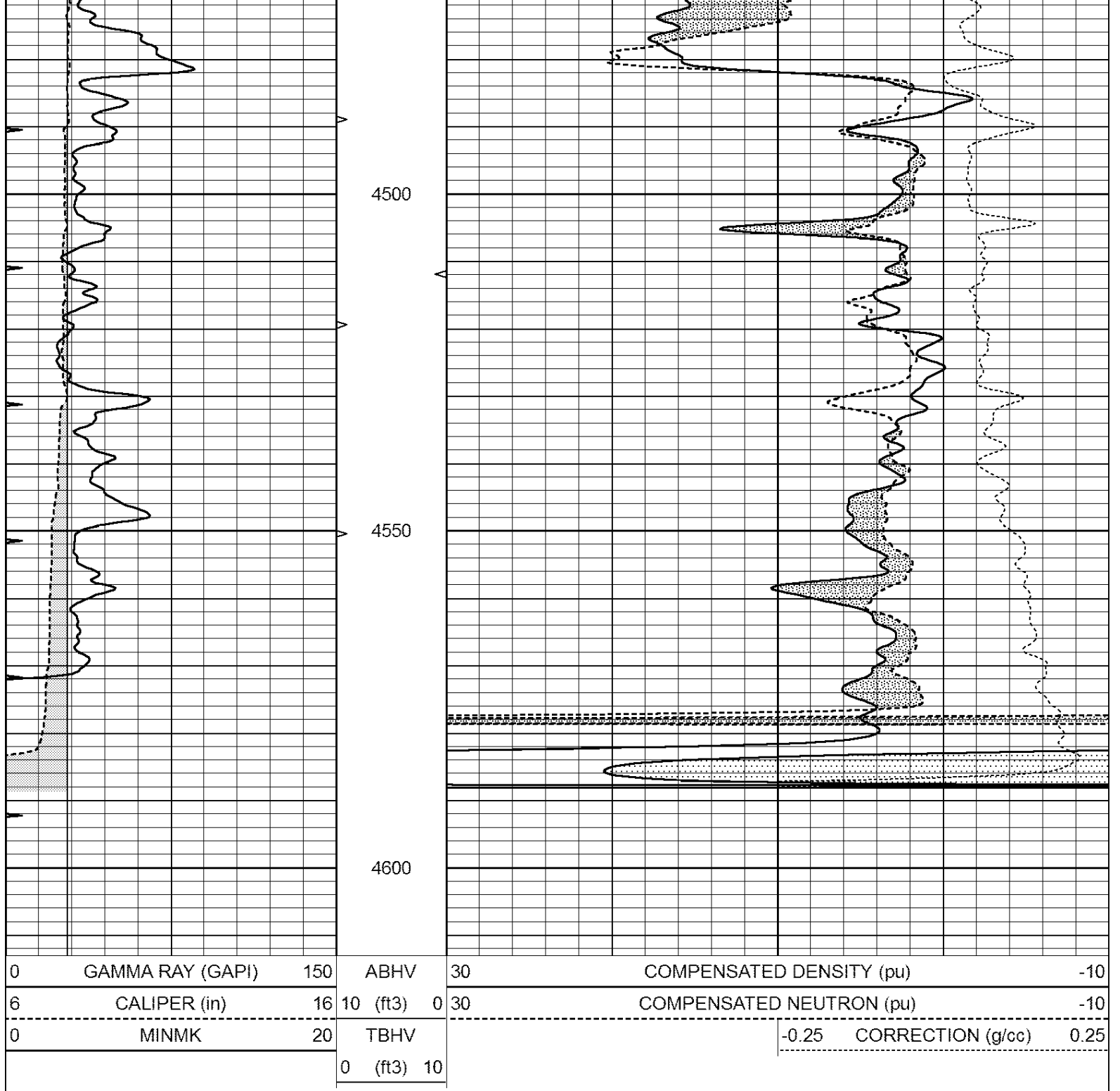


SUPERIOR
Hays,
Kansas

REPEAT SECTION

Database File: 007285ddn.db
 Dataset Pathname: pass2.9
 Presentation Format: den_neu
 Dataset Creation: Thu Aug 25 15:21:46 2011
 Charted by: Depth in Feet scaled 1:240





Calibration Report

Database File: 007285ddn.db
 Dataset Pathname: pass3.5
 Dataset Creation: Thu Aug 25 15:26:16 2011

Dual Induction Calibration Report

Serial-Model: DIL4-GEAR
 Performed: Thu Aug 25 14:23:22 2011

Loop:	Readings			V	References		Results		
	Air	Loop			Air	Loop	m	b	
Deep	0.008	0.666		V	0.000	400.000	mmho/m	570.000	-1.000
Medium	-0.003	0.769		V	0.000	462.500	mmho/m	560.000	0.000

Internal:	Zero	Cal		Zero	Cal		m	b
Deep	0.013	0.651	V	0.000	400.000	mmho/m	627.541	-8.365
Medium	0.020	0.754	V	0.000	462.500	mmho/m	630.311	-12.549

Litho Density Calibration Report
Serial: 004N Model: PRB
Performed Tue Sep 08 13:49:55 2009

Litho Density Calibration

	Background	Magnesium	Aluminum	Sandstone	
Window 1	1535.8	11161.3	3721.6	12498.8	cps
Window 2	1402.6	9435.7	3219.7	10417.7	cps
Window 3	1077.6	4422.0	1779.2	4753.4	cps
Window 4	337.3	342.8	337.4	343.7	cps
Long Space	0.0	8033.1	1817.0	9015.1	cps
Short Space	1.2	1671.8	1138.1	1813.0	cps
Rho		1.7100	2.5900	1.3800	g/cc
Pe			2.5700	1.5500	
Rib Angle	: 45.5	Rib Slope	: 1.017	Density/Spine Ratio	: 0.573
Spine Angle	: 75.5	Spine Slope	: 3.865	Spine Intercept	: -19.7

Caliper

	Readings	Reference	
Low Ref	2.8	8.0	
High Ref	4.6	15.0	
	Gain: 3.8		Offset: -2.6

Compensated Neutron Calibration Report

Serial Number: NEU_11
Tool Model: G

CALIBRATION

Detector	Readings	Target	Normalization
Short Space	1.00 cps	1.00 cps	1.0000
Long Space	1.00 cps	1.00 cps	1.0000

Gamma Ray Calibration Report

Serial Number: GR1
Tool Model: OPEN
Performed: Thu Aug 25 14:22:53 2011

Calibrator Value: 200.0 GAPI

Background Reading: 3.0 cps
Calibrator Reading: 186.0 cps

Sensitivity: 0.2500 GAPI/cps