



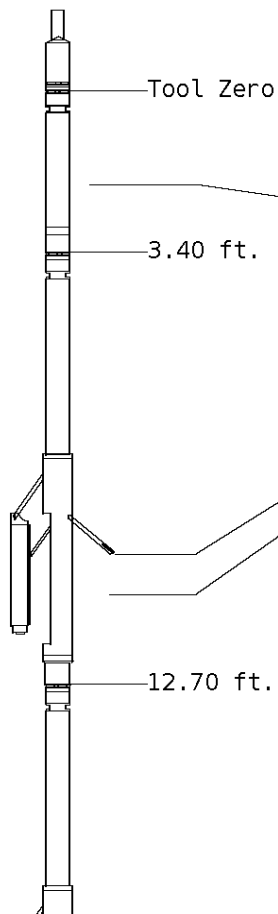
ALL PRESENTATIONS AS PER CUSTOMER REQUEST.  
 GRT, CNT, LDT, PIT RUN IN COMBINATION.  
 CALIPERS ORIENTED ON X-Y AXIS.  
 2.71 G/CC USED TO CALCULATE POROSITY.  
 ANNULAR HOLE VOLUME CALCULATED USING 2.875" PRODUCTION CASING.  
 PHIN, SP AND SFL CUT OFF AT 189' DUE TO FLUID LEVEL

GRT: GRP.  
 CNT: PHIN, CLCNIN.  
 LDT: PORL, LCORN, PECLN, LDENN, PORLLS, CLLDIN.  
 PIT: ILD, ILM, SPU, SFLAEC

OPERATORS:  
 J. TORBERT  
 J. THOMAS

### Tool String Schematic

**Total Tool Length** - 43.49 ft.  
**Maximum Outside diameter** - 4.80 in.  
**Net Weight in Air** - 743.00 lbs.



**Tool:** GRT-B      **Length:** 3.40 ft.    **O.D.** 3.60 in.  
 Gamma Ray Controller

**Sonde ID** :GRT-BA-121

Measure Point	Tool Offset	Stack Offset	Bottom Offset
GRP	2.00	2.00	41.49

**Tool:** CNT-AA      **Length:** 9.30 ft.    **O.D.** 4.36 in.  
 Compensated Neutron A Pad on NDT-A

**Sonde ID** :NDT-AB-400

**Source ID** :N-1044

**Pad ID** :CNP-AA-116

Measure Point	Tool Offset	Stack Offset	Bottom Offset
CLCN	6.00	9.40	34.09
PHIN	6.80	10.20	33.29

**Tool:** LDT-DA      **Length:** 9.30 ft.    **O.D.** 4.80 in.  
 Litho Density D Pad on NDT-A

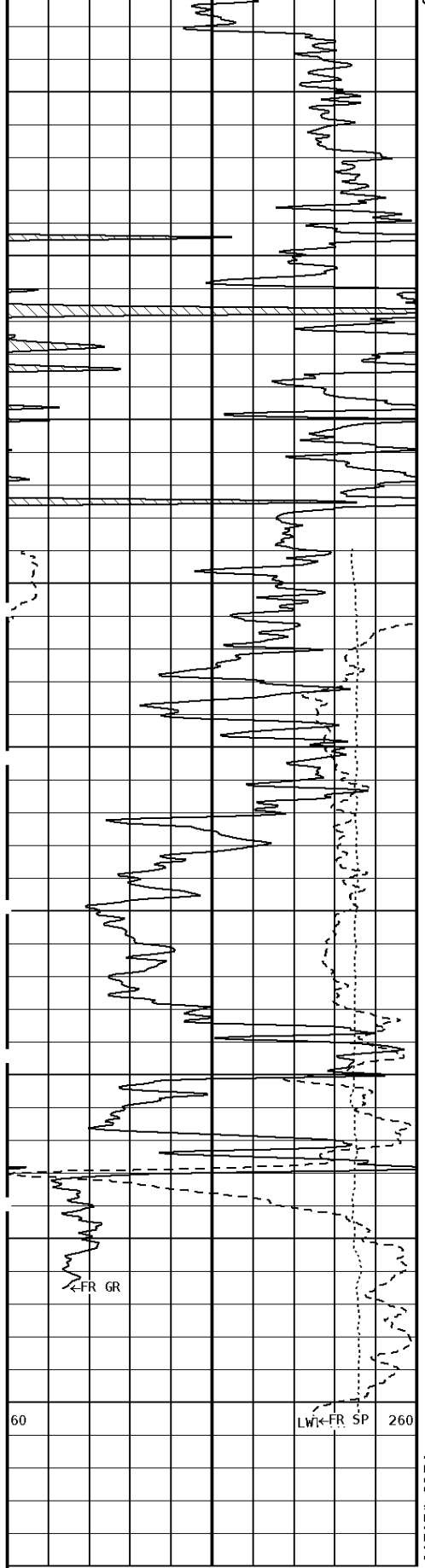
**Sonde ID** :PDT-GA-465

**Source ID** :CSV-587

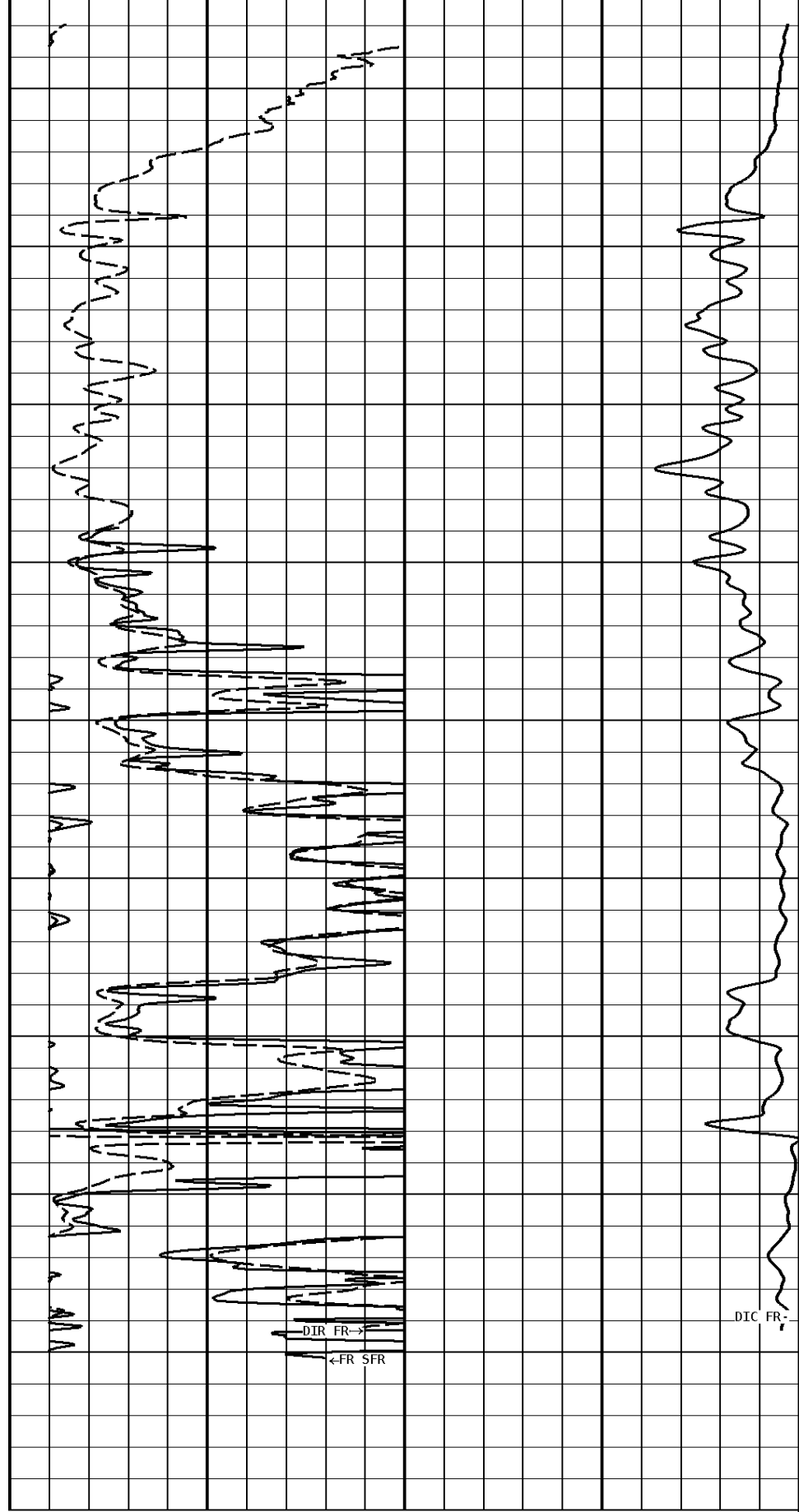
**Pad ID** :LDP-DA-01

Measure Point	Tool Offset	Stack Offset	Bottom Offset
CLLD	6.00	18.70	24.79
PEL	7.00	19.70	23.79
PES	7.40	20.10	23.39

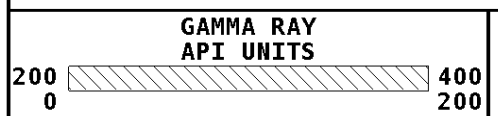


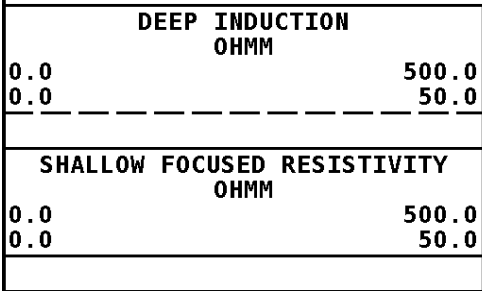
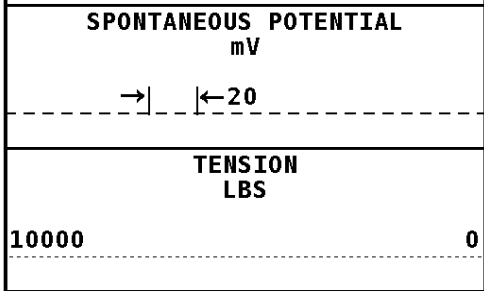


100  
200  
300  
400  
457

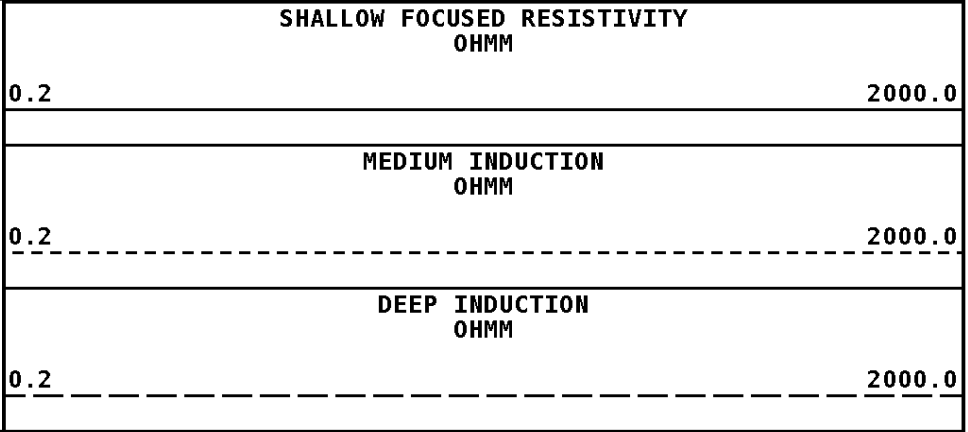
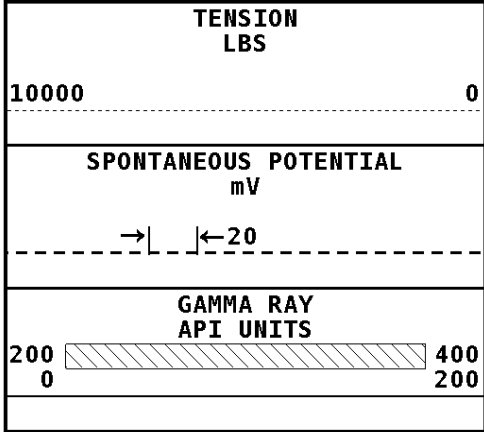


**1:600 SECTION**  
2 INCH

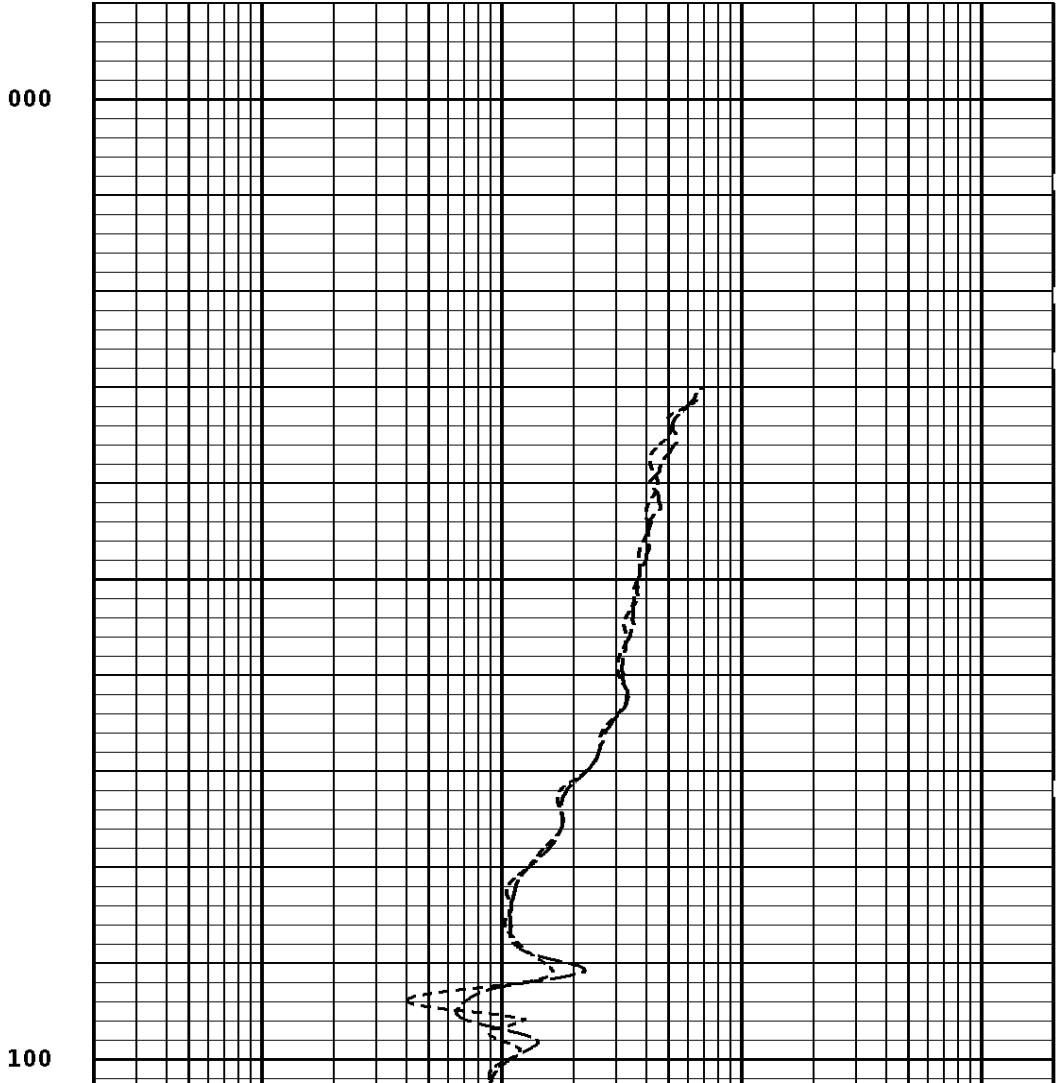
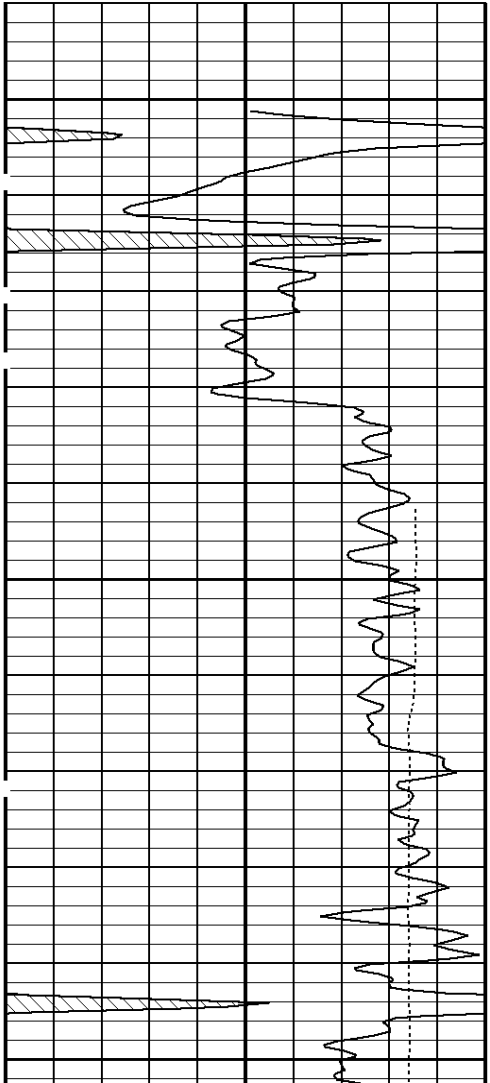


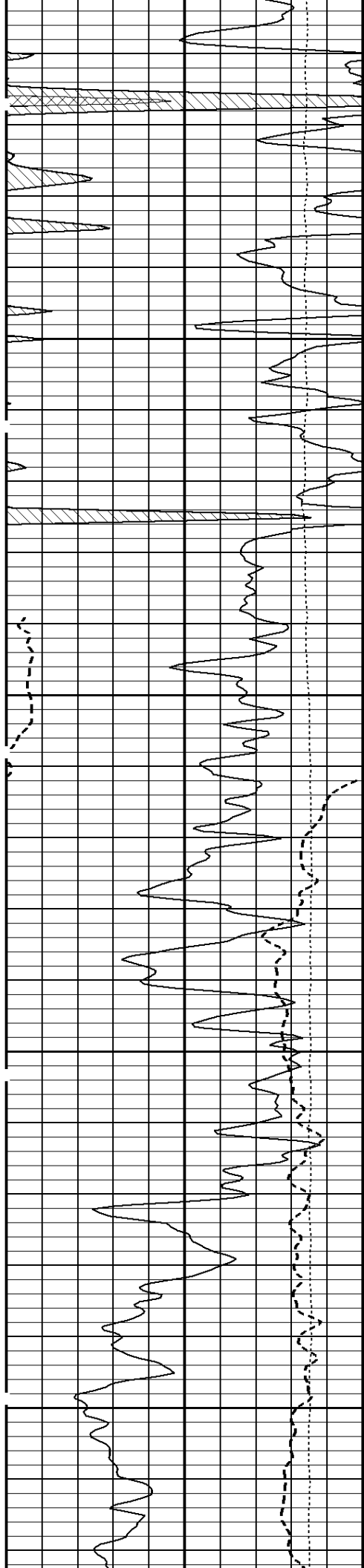


<b>Well File:</b> RFP_BACKRUB_AUG4_STK	<b>Scale:</b> 1:240
<b>Segment:</b> V1.D1.S6 Reprocess of main pass	<b>Acquired:</b> 2011-08/04 13:08 3.2.0-10140
<b>Reference:</b> 0	<b>Processed:</b> 2011-08/04 13:21 3.2.0-10140



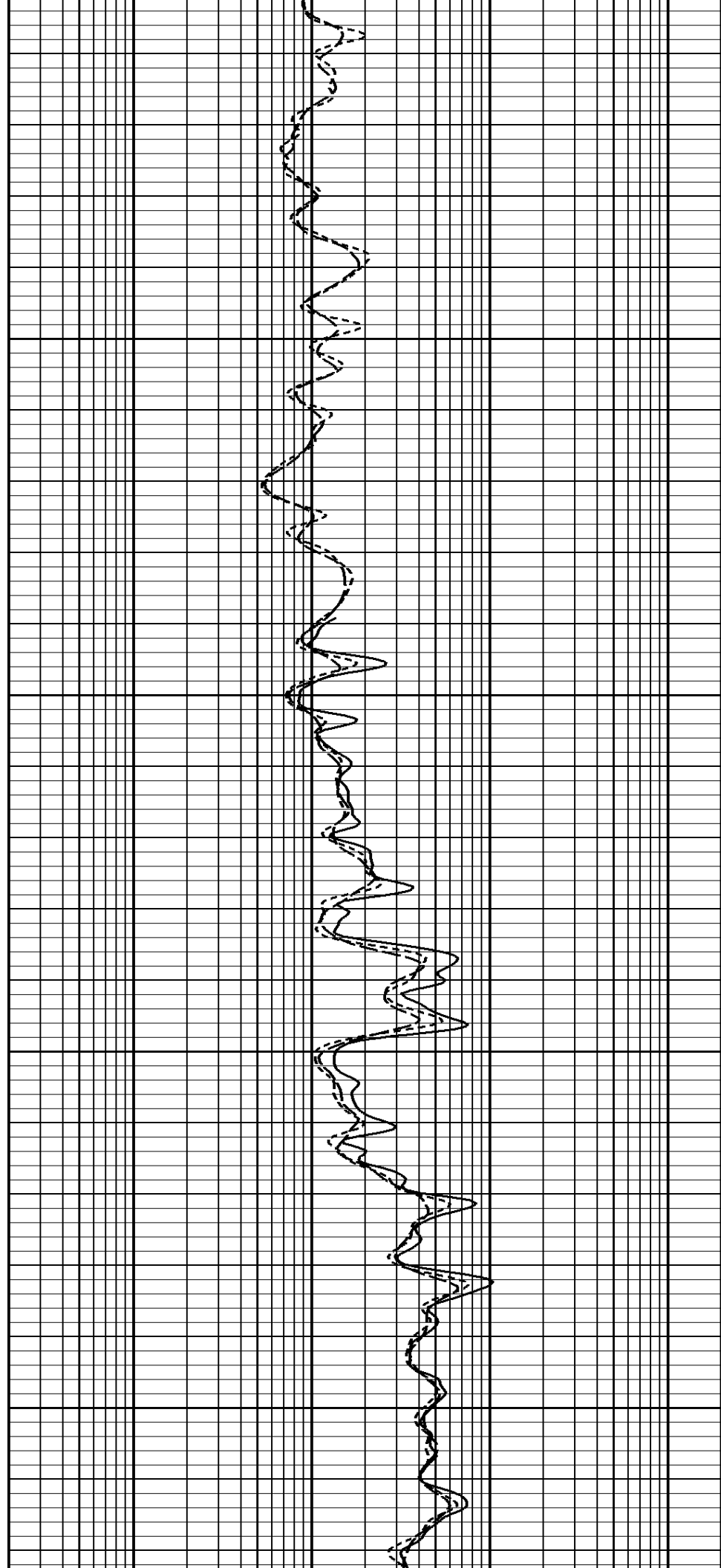
### 1:240 MAIN SECTION

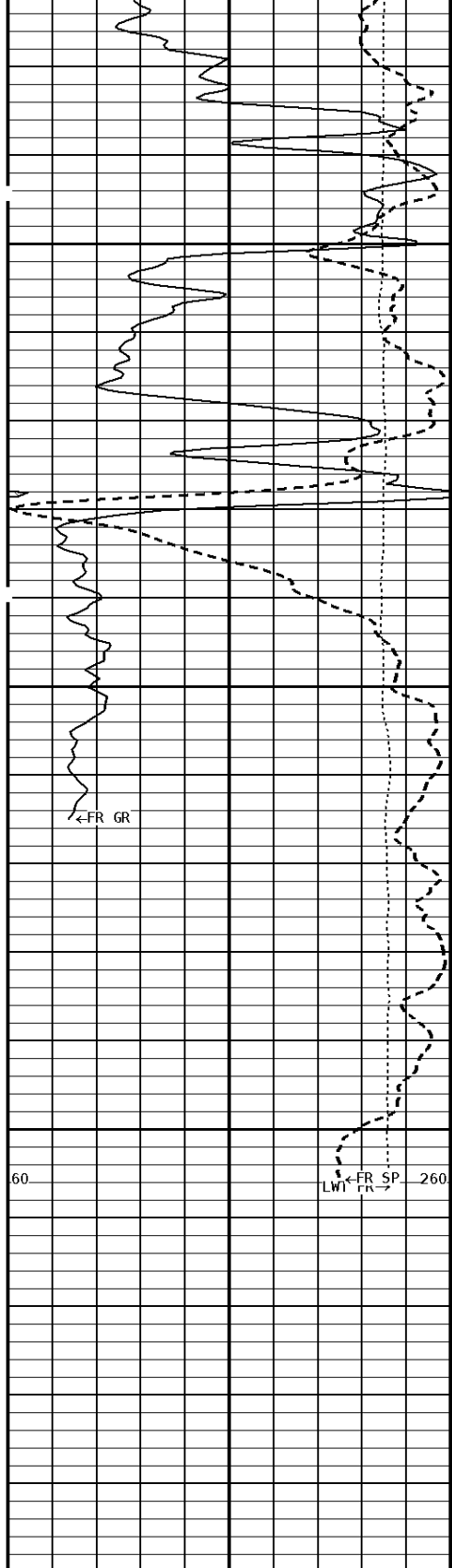




200

300

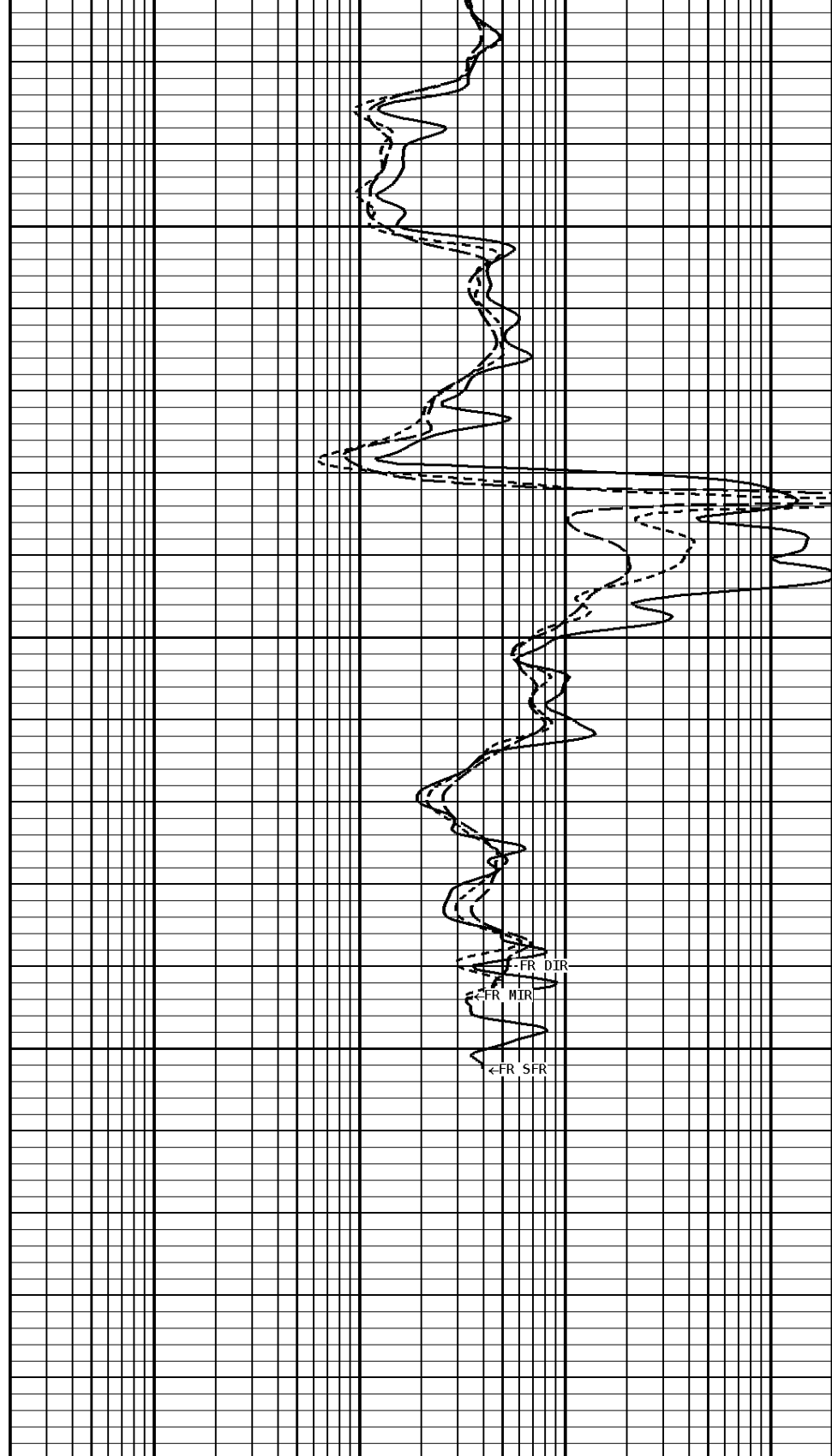




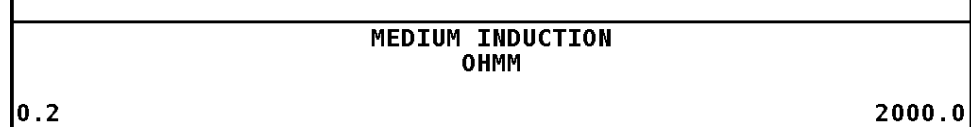
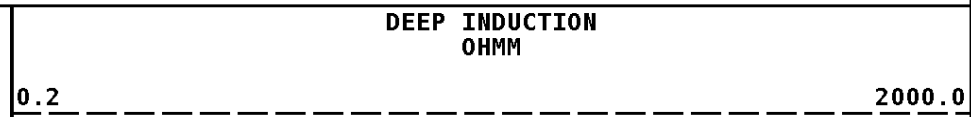
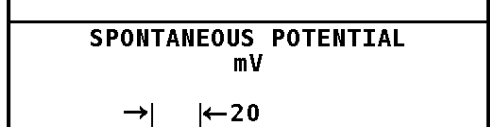
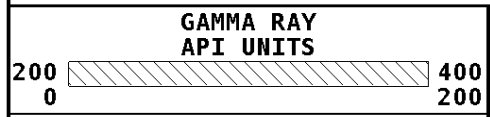
File #1.1.6

400

457



1:240 MAIN SECTION



**TENSION  
LBS**

10000 0

**SHALLOW FOCUSED RESISTIVITY  
OHMM**

0.2 2000.0

**\* Borehole Zone Factors \***

**Zone 1 99999.0 to 0.0 Feet**

Drill Bit Size \_\_\_\_\_ 6.250 in  
 BHT Depth \_\_\_\_\_ 460.000 ft  
 Borehole Temperature \_\_\_\_\_ 90.0 degF  
 Temperature Gradient \_\_\_\_\_ 1.00 DFHF  
 Resistivity Of Mud \_\_\_\_\_ 0.900 ohm/m  
 Standoff \_\_\_\_\_ 0.0  
 Resistivity Of Mud Temperature \_\_\_\_\_ 90.00 degF

**Well File:** RFP\_BACKRUB\_AUG4\_STK **Scale:** 1:240  
**Segment:** V1.D1.S4 Reprocess repeat pass **Acquired:** 2011-08/04 12:54 3.2.0-10140  
**Reference:** 0 **Processed:** 2011-08/04 13:02 3.2.0-10140

**TENSION  
LBS**

10000 0

---

**SPONTANEOUS POTENTIAL  
mV**

→ | ← 20

---

**GAMMA RAY  
API UNITS**

200 400  
0 200

**SHALLOW FOCUSED RESISTIVITY  
OHMM**

0.2 2000.0

---

**MEDIUM INDUCTION  
OHMM**

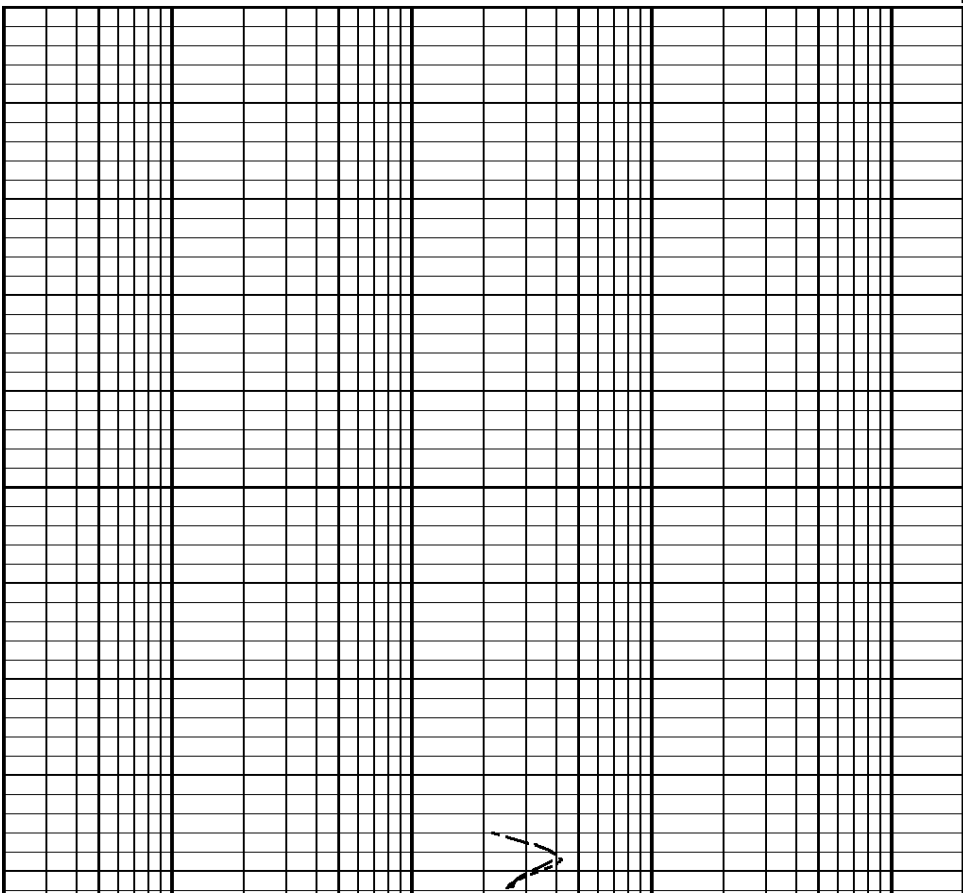
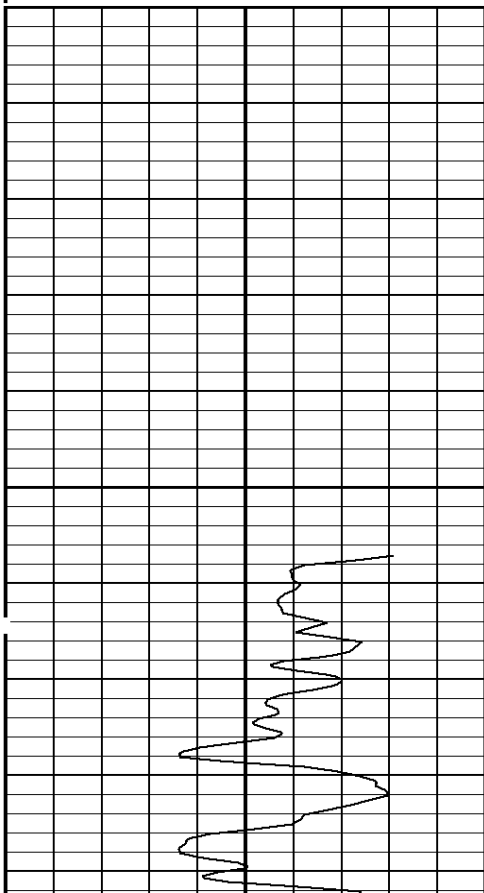
0.2 2000.0

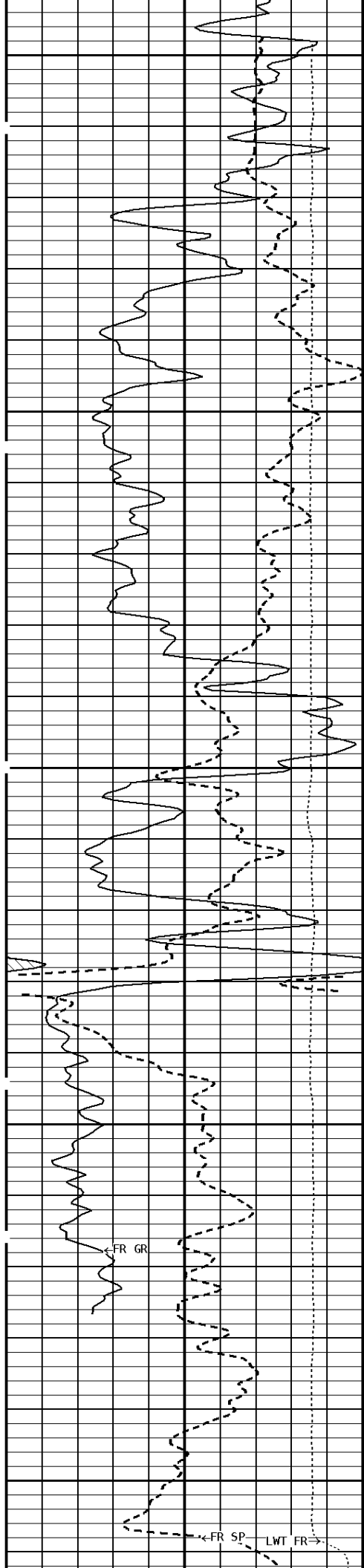
---

**DEEP INDUCTION  
OHMM**

0.2 2000.0

**1:240 REPEAT SECTION**

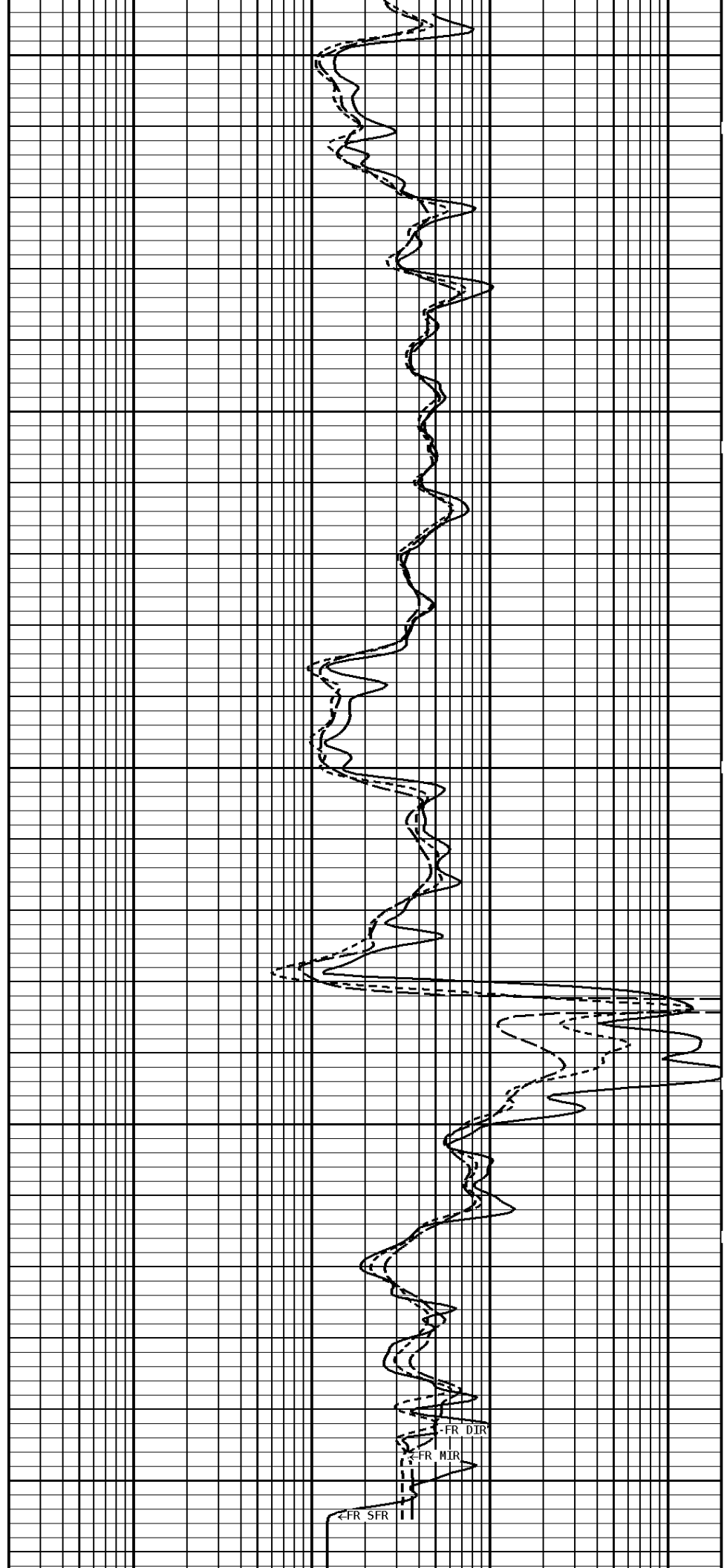




300

400

459





Reference	226156	226913	2000.0	2000.0	MMHOS
Loop	146093	174470	1265.6	459.5	MMHOS
Sonde Error			-2.6	-6.0	MMHOS
Cond			2000.0	2000.0	MMHOS

Temperature					
Measured		Calibrated		Units	
Low	High	Low	High	DEGF	
16980.0	56920.0	70.0	350.0		

Performed : 09-Jan-2009      Time : 11:35  
 Sensor Suite : SFL              ID : PIT-AC-25

Internal					
Measured		Calibrated		Units	
Zero	Reference	Zero	Reference		
Im	32768.5	50183.6	0.0	7028.0	uA
Ib	32766.3	49460.7	0.0	1750.0	mA
MOM1	32780.1	57601.4	0.0	175.0	mV
Equivalent SFL				43.97	OHMM

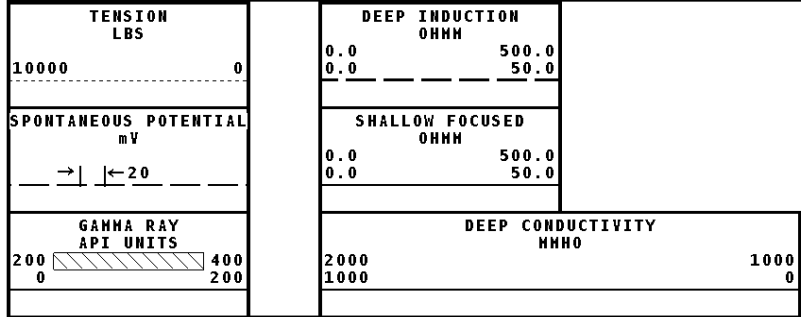
Performed : 09-Jan-2009      Time : 11:24  
 Sensor Suite : P-SP            ID : PIT-AC-25

Internal					
Measured		Calibrated		Units	
Zero	Reference	Zero	Reference	mV	
32790.7	58803.7	0.0	1000.0		

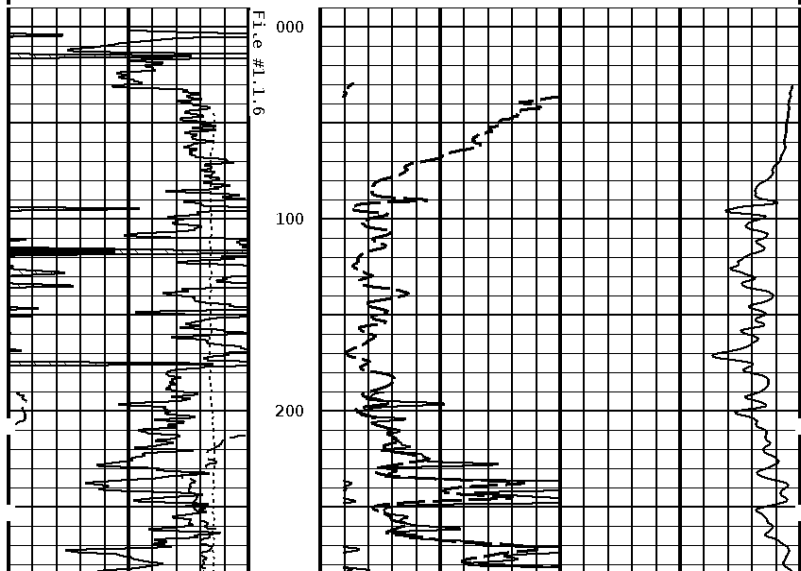
Performed : 07-Sep-2007      Time : 15:42  
 Sensor Suite : P-RMUD        ID : PIT-AC-25

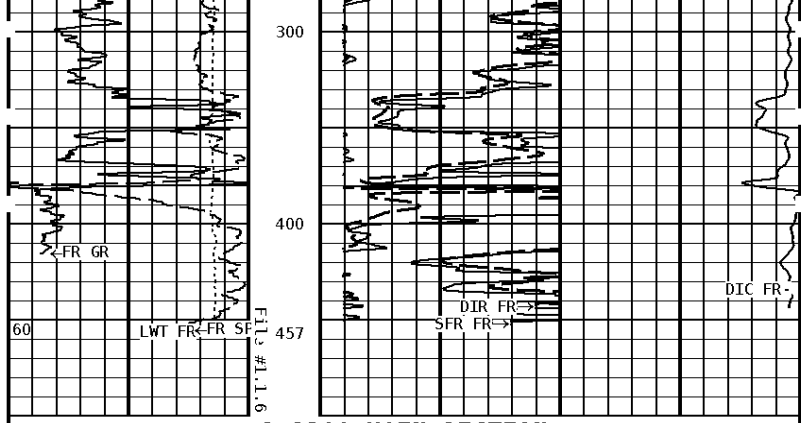
Internal					
Measured		Calibrated		Units	
Zero	Reference	Zero	Reference		
Rmi	15.2	48641.4	0.0	290.6	mA
Rmv	0.0	43561.9	0.0	290.6	mV
Equivalent Rm				0.9037	OHMM

**Well File:** RFP\_BACKRUB\_AUG4\_STK      **Scale:** 1:1200  
**Segment:** V1.D1.S6 Reprocess of main pass      **Acquired:** 2011-08/04 13:08 3.2.0-10140  
**Reference:** 0      **Processed:** 2011-08/04 13:21 3.2.0-10140



**1:1200 MAIN SECTION**





**1:1200 MAIN SECTION**

<b>GAMMA RAY</b> <b>API UNITS</b>	
200	400
0	200
<b>SPONTANEOUS POTENTIAL</b> <b>mV</b>	
→	← 20
<b>TENSION</b> <b>LBS</b>	
10000	0

<b>DEEP CONDUCTIVITY</b> <b>MMHO</b>	
2000	1000
1000	0
<b>SHALLOW FOCUSED</b> <b>OHMM</b>	
0.0	500.0
0.0	50.0
<b>DEEP INDUCTION</b> <b>OHMM</b>	
0.0	500.0
0.0	50.0