

Company: AMERICAN WARRIOR, INC.
Well: RACHEL NO. 4-17
Field: MARGHEIM
County: NESS
State: KANSAS
Location: 335 FSL & 1495 FWL
APR #: 15-135-25191-0000
Other Services: K B 2255 G.L. 2259

Company: AMERICAN WARRIOR, INC.
Well: RACHEL NO. 4-17
Field: MARGHEIM
County: NESS
State: KANSAS
Location: 335 FSL & 1495 FWL
APR #: 15-135-25191-0000
Other Services: K B 2255 G.L. 2259

Run Number: ONE
Date: OCT 27 2011
Drilling Measured From: KELLY BUSHING
Log Measured From: KELLY BUSHING
Fermant Datum: GROUND LEVEL
Elevation: 2259
Bottom Log Interval: 4387
Bottom Logged Interval: 3030
Open Hole Size: 5.000
Max. Recorded Temp: //
Estimated Cement Top: 3210

Time Well Reached: //
Equipment Number: FT-26
Leashed By: HAVS
Witnessed By: BOB KLAUS
Run Number: ONE
TWC: 7.875
Casing Record: Size 8.58
Production String: 5.112
Recoiled By: MR SCOTT COUSAR
BIT: 223
TWC: 4.990
Casing Record: Size 8.58
Production String: 5.112

<<< Fold Here >>>

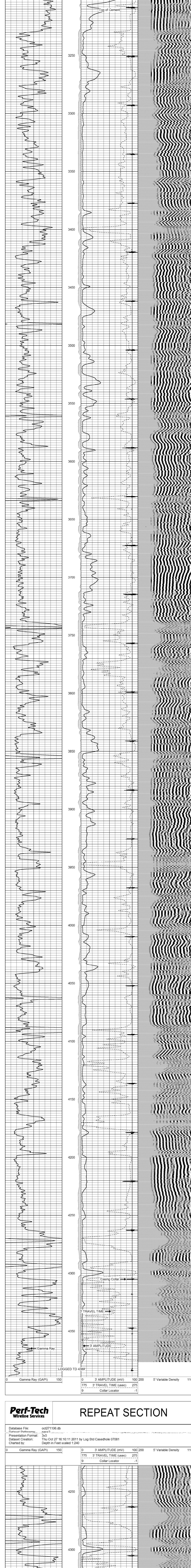
All interpretations are opinions based on inferences from electrical or other measurements and we cannot and do not guarantee the accuracy or correctness of any interpretation, and we shall not, except in the case of gross or willful negligence on our part, be liable or responsible for any loss, costs, damages, or expenses incurred or sustained by anyone resulting from any interpretation made by any of our officers, agents or employees. These interpretations are also subject to our general terms and conditions set out in our current Price Schedule.

Comments

THANK YOU FOR USING
PERF-TECH
WIRELINE SERVICES, INC.
785-628-3969

Perf-Tech Wireline Services **MAIN PASS**

Database File: oct1271106.db
Dataset Pathname: pass3
Presentation Format: 3x3
Dataset Creation: Thu Oct 27 16:16:25 2011 by Log Std Casedhole 07081
Charted by: Depth in Feet scaled 1.240



Perf-Tech Wireline Services **REPEAT SECTION**

Database File: oct1271106.db
Dataset Pathname: pass3
Presentation Format: 3x3
Dataset Creation: Thu Oct 27 16:10:11 2011 by Log Std Casedhole 07081
Charted by: Depth in Feet scaled 1.240

