

|                        |                        |                        |                      |                |                            |
|------------------------|------------------------|------------------------|----------------------|----------------|----------------------------|
| Company                | AMERICAN WARRIOR, INC. | County                 | NESS                 | State          | KANSAS                     |
| Well                   | WITTHUHN HEIRS #2-25   | Field                  | BAZINE DRY CREEK     | Location       | SEC. 25 TWP. 18S. RGE. 22W |
| Company                | AMERICAN WARRIOR, INC. | Well                   | WITTHUHN HEIRS #2-25 | Other Services |                            |
| Field                  | BAZINE DRY CREEK       | County                 | NESS                 | State          | KANSAS                     |
| Date                   | AUGUST 3, 2011         | Log Measured From      | GROUND LEVEL         | Elevation      | 2146                       |
| Run Number             | ONE                    | Log Measured From      | KELLY BUSHING        | K.E. 2152      |                            |
| Depth                  | 4230                   | Drilling Measured From | KELLY BUSHING        | D.I. 2146      |                            |
| Bottom Logged Interval | 2850                   | Top Log Interval       |                      |                |                            |
| Time With Battery      |                        | Estimated Cement Top   |                      |                |                            |
| Equipment Number       | PT-38                  | Recorded By            | JEREMY SCHNEIDER     |                |                            |
| Witnessed By           | MKR SCOTT CONRSAN      | Revised By             |                      |                |                            |
| Run Number             | ONE                    | Run Number             | TWO                  |                |                            |
| Bit                    | 12.25                  | Bit                    | 14.18                |                |                            |
| Size                   | 7.875                  | Size                   | 4.240                |                |                            |
| Collar Record          | 00                     | Collar Record          | 00                   |                |                            |
| Strapped String        | 8.98                   | Strapped String        | 2.28                 |                |                            |
| Production String      | 5.12                   | Production String      | 15.5#                |                |                            |
| Liner                  |                        | Liner                  |                      |                |                            |

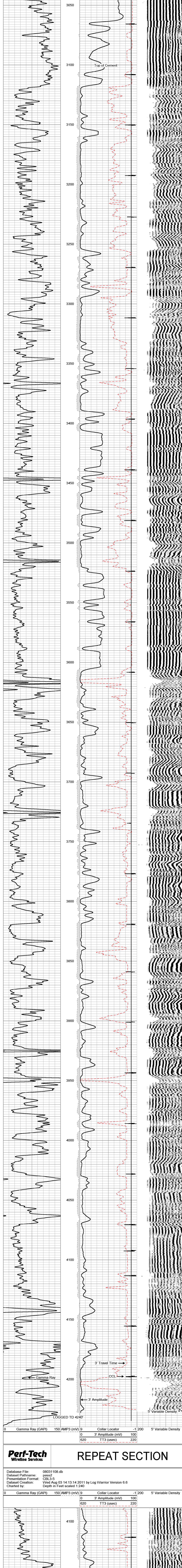
<< Fold Here >>

All interpretations are opinions based on inferences from electrical or other measurements and we cannot and do not guarantee the accuracy or correctness of any interpretation, and we shall not, except in the case of gross or willful negligence on our part, be liable or responsible for any loss, costs, damages, or expenses incurred or sustained by anyone resulting from any interpretation made by any of our officers, agents or employees. These interpretations are also subject to our general terms and conditions set out in our current Price Schedule.

Comments

**Perf-Tech** Wireline Services **MAIN PASS**

Database File: 08031108.db  
 Dataset Pathname: pass3  
 Presentation Format: CBL3-5  
 Dataset Creation: Wed Aug 03 14:18:38 2011 by Log Warrior Version 6.6  
 Charted by: Depth in Feet scaled 1.240



**Perf-Tech** Wireline Services **REPEAT SECTION**

Database File: 08031108.db  
 Dataset Pathname: pass3  
 Presentation Format: CBL3-5  
 Dataset Creation: Wed Aug 03 14:13:14 2011 by Log Warrior Version 6.6  
 Charted by: Depth in Feet scaled 1.240

