

Company Production Drilling
Well Crissman #4
Field Ubert
County Ellis
State Kansas

Company Production Drilling
Well Crissman #4
Field Ubert
County Ellis State Kansas

Location: API #: 15 051 26203
493' FSL & 343' FWL
SEC 1 TWP 13S RGE 18W
Permanent Datum Ground Level Elevation 2109'
Log Measured From KB 8' AGL
Drilling Measured From KB
Other Services
DIL
CDNL
Elevation
K.B. 2117'
D.F. 2116'
G.L. 2109'

Date	10-26-11
Run Number	One
Depth Driller	3695'
Depth Logger	3693'
Bottom Logged Interval	3691'
Top Log Interval	3050'
Casing Driller	222'
Casing Logger	222'
Bit Size	7 7/8"
Type Fluid in Hole	Chemical
Density / Viscosity	9.2/54
pH / Fluid Loss	9.5/8.0
Source of Sample	Pit
Rm @ Meas. Temp	1.93@67deg
Rmf @ Meas. Temp	1.45@67deg
Rmc @ Meas. Temp	3.09@67deg
Source of Rmf / Rmc	Measured
Rm @ BHT	1.23@105deg
Time Circulation Stopped	7:15 p.m.
Time Logger on Bottom	9:15 p.m.
Maximum Recorded Temperature	105
Equipment Number	T045
Location	Hays, Ks.
Recorded By	L. Smith
Witnessed By	Mr. Cliff Ottaway

<<< Fold Here >>>

All interpretations are opinions based on inferences from electrical or other measurements and we cannot and do not guarantee the accuracy or correctness of any interpretation, and we shall not, except in the case of gross or willful negligence on our part, be liable or responsible for any loss, costs, damages, or expenses incurred or sustained by anyone resulting from any interpretation made by any of our officers, agents or employees. These interpretations are also subject to our general terms and conditions set out in our current Price Schedule.

Comments

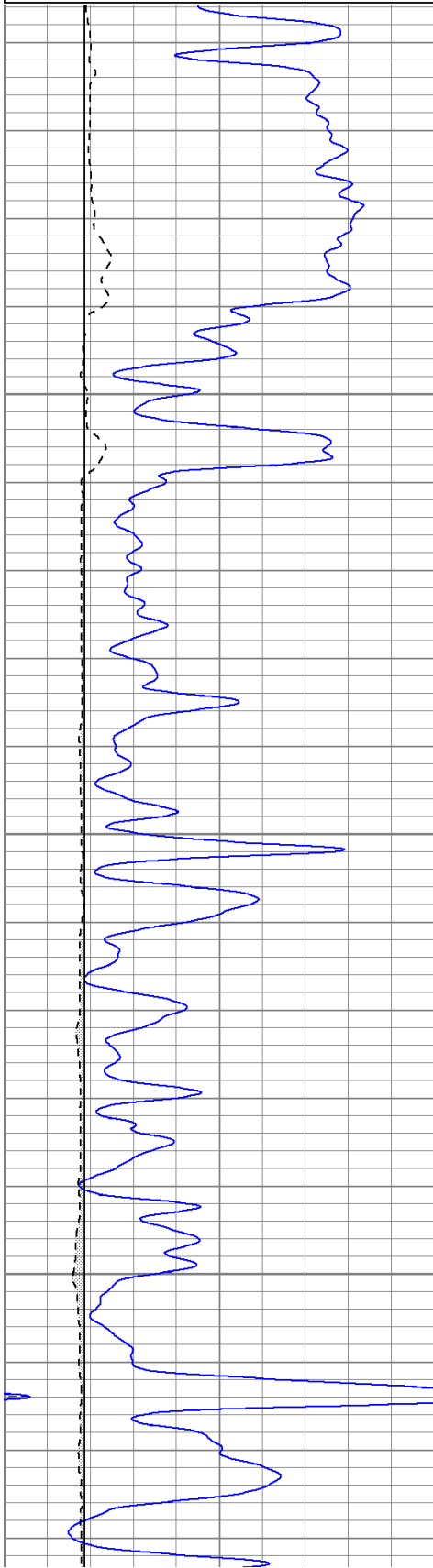
Feedlot Rd. E 2mi., N into.

Thank you for using The Perforators LLC
Hays, KS 785-621-4604

Database File: pdicrissman#4oh.db
 Dataset Pathname: pass3.1
 Presentation Format: krg
 Dataset Creation: Wed Oct 26 22:34:22 2011 by Calc Open-Cased 100827
 Charted by: Depth in Feet scaled 1:240

0	GR (GAPI)	150
6	DCAL (in)	16
6	BOREID (in)	16

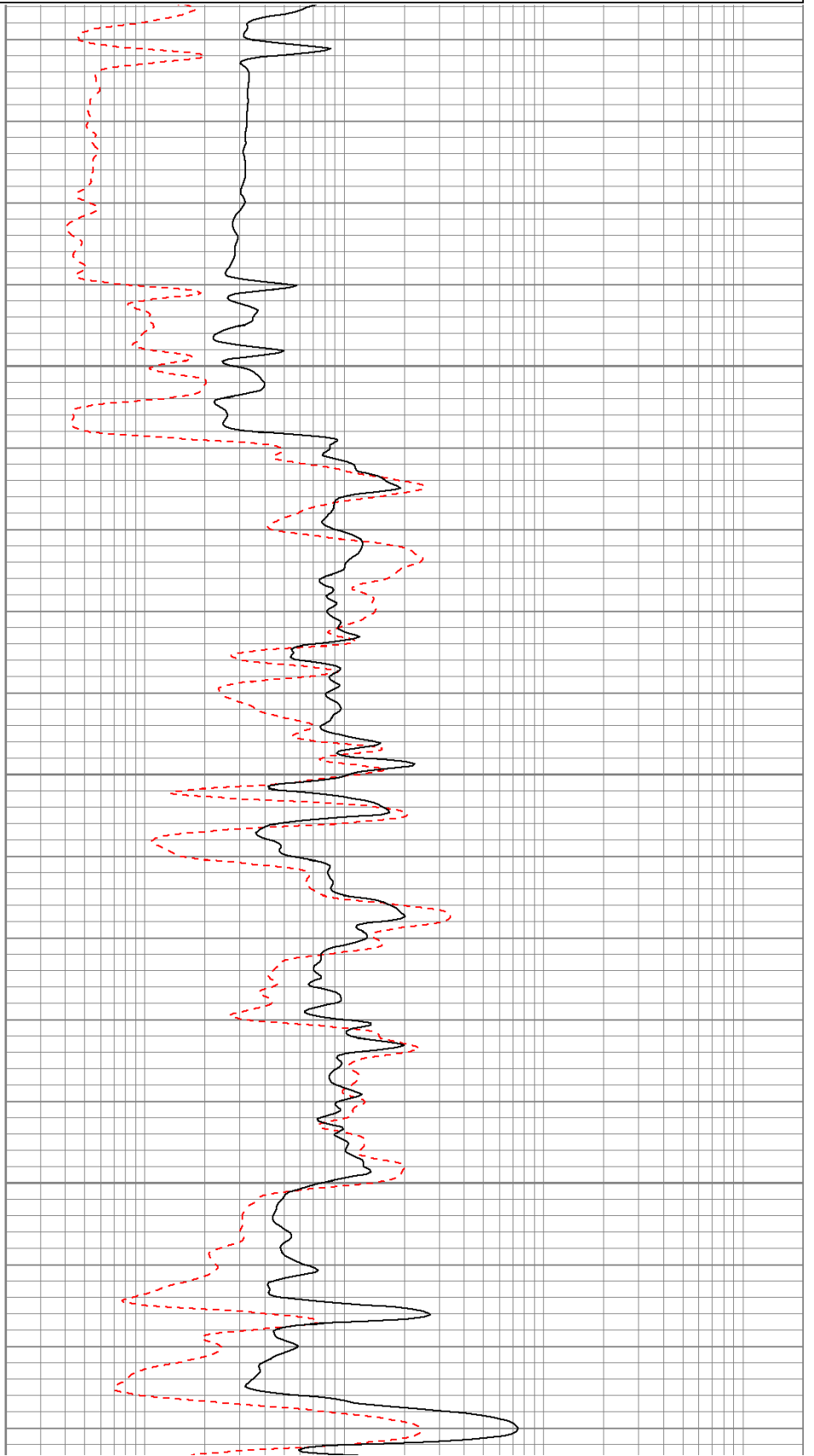
100	NEU (NAPI)	950
0.2	RLL3 (Ohm-m)	2000

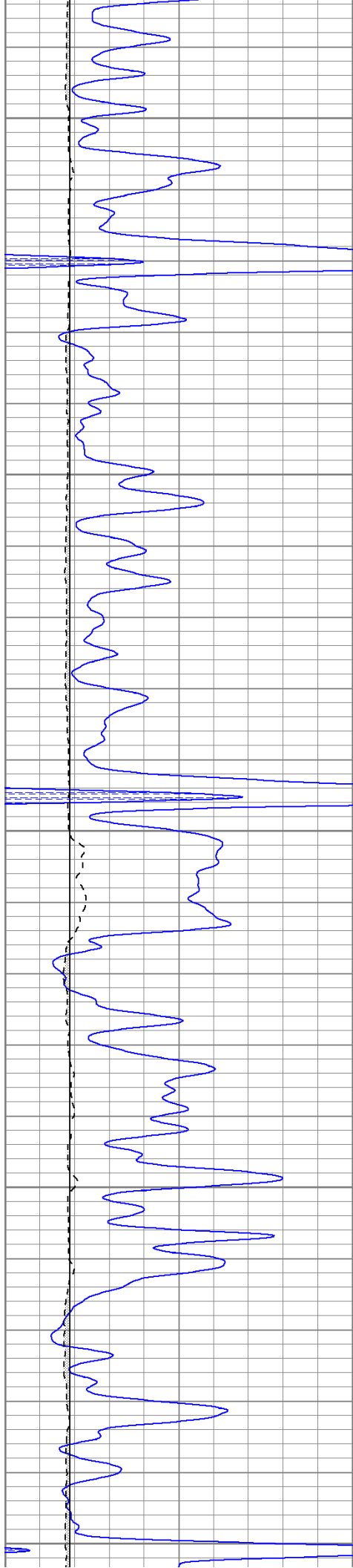


3100

3150

3200





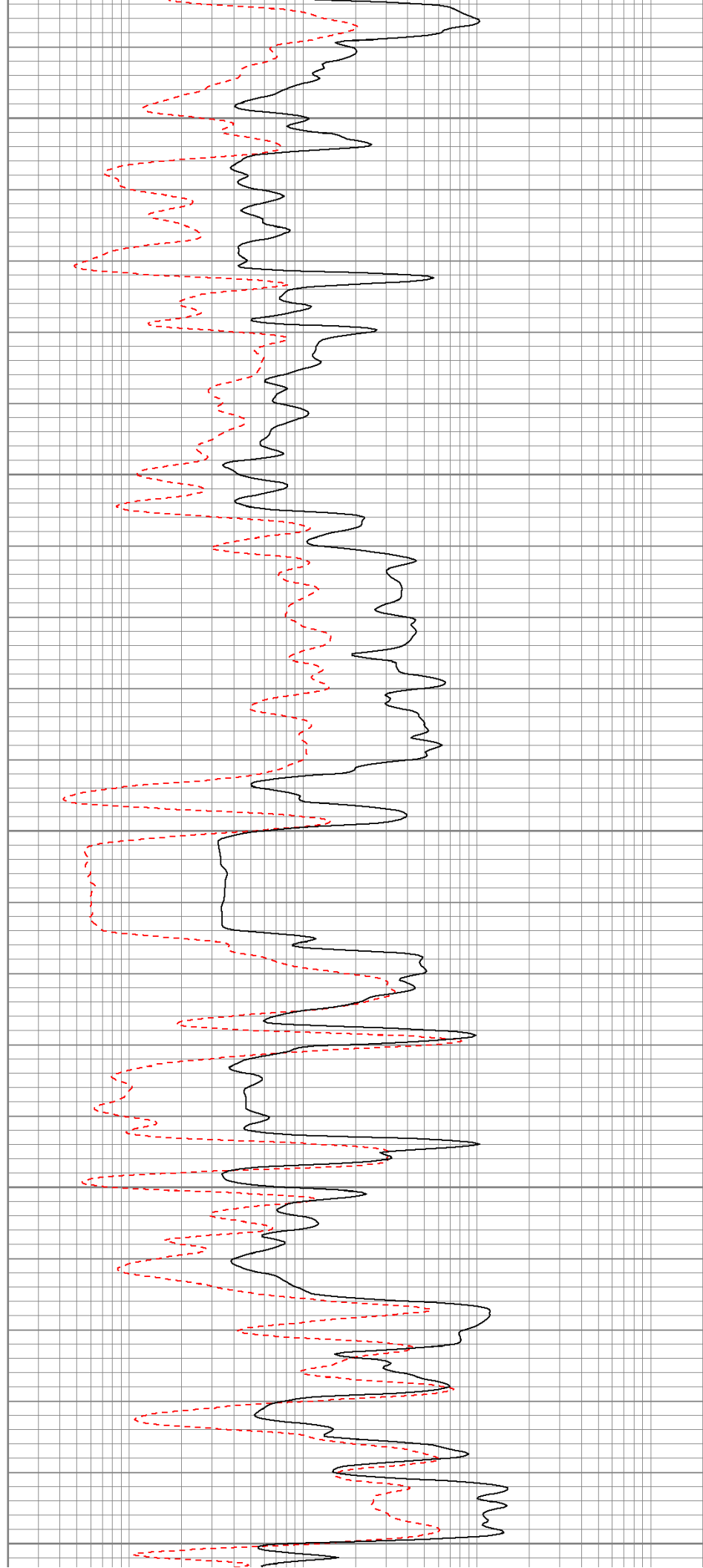
3250

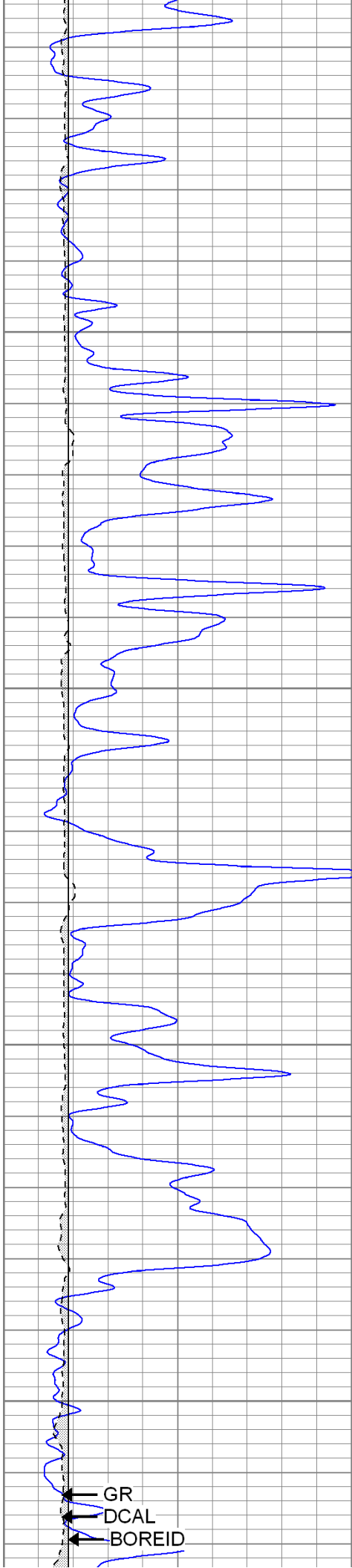
3300

3350

3400

3450



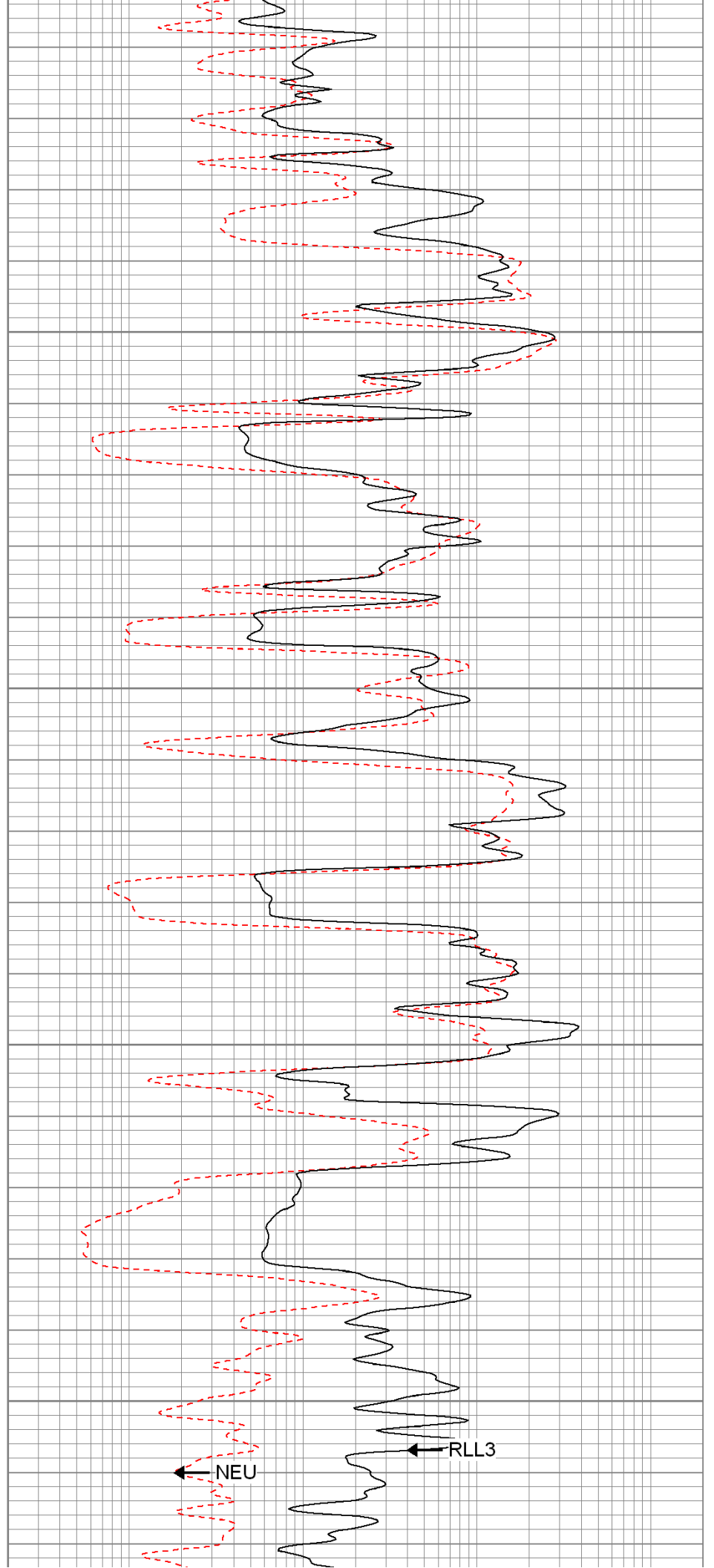


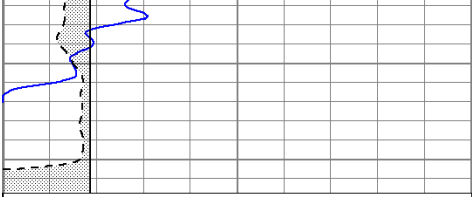
3500

3550

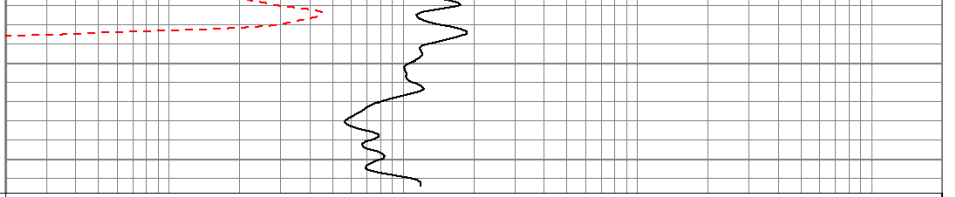
3600

3650





0	GR (GAPI)	150
6	DCAL (in)	16
6	BOREID (in)	16



100	NEU (NAPI)	950
0.2	RLL3 (Ohm-m)	2000

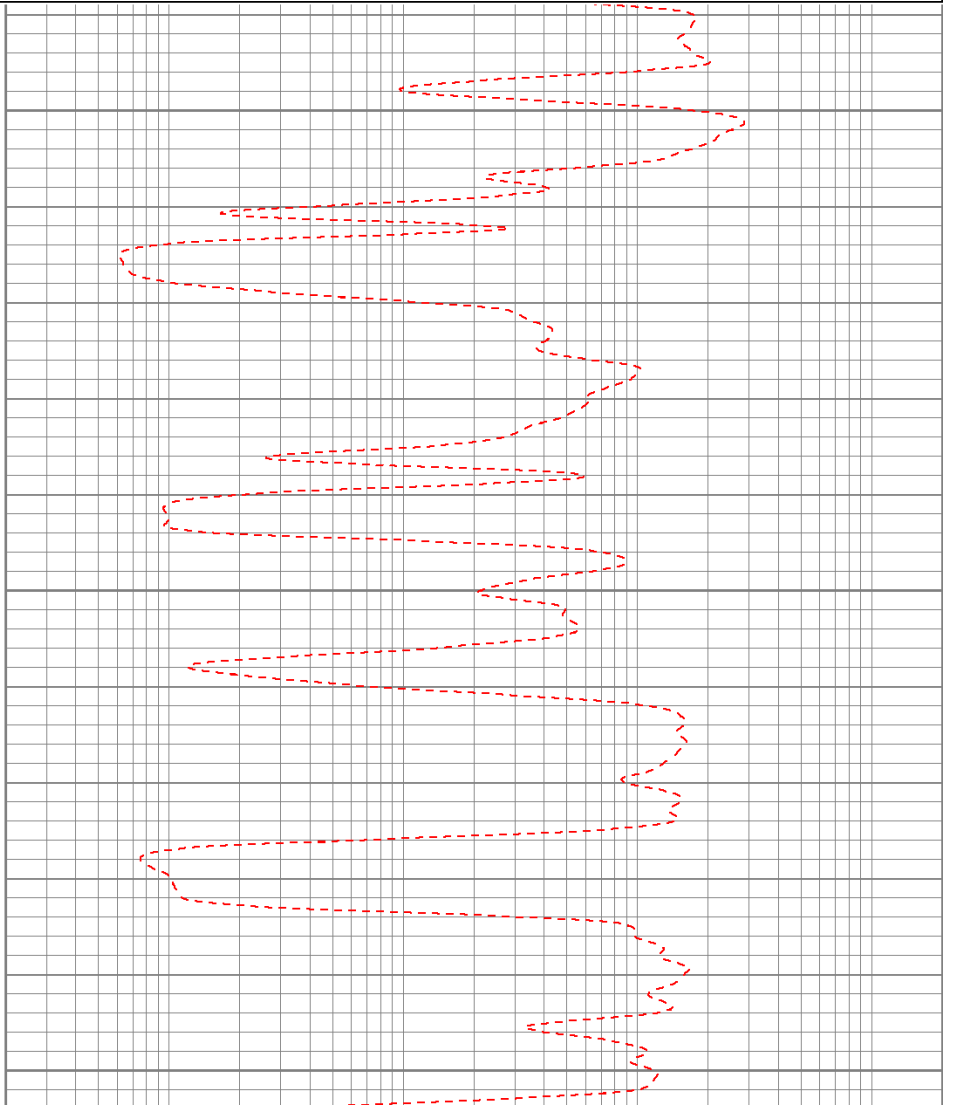
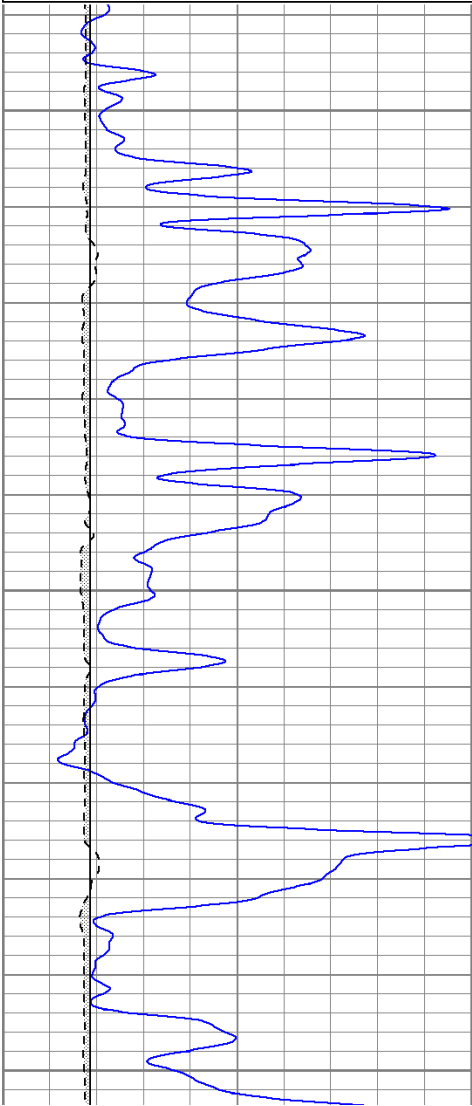


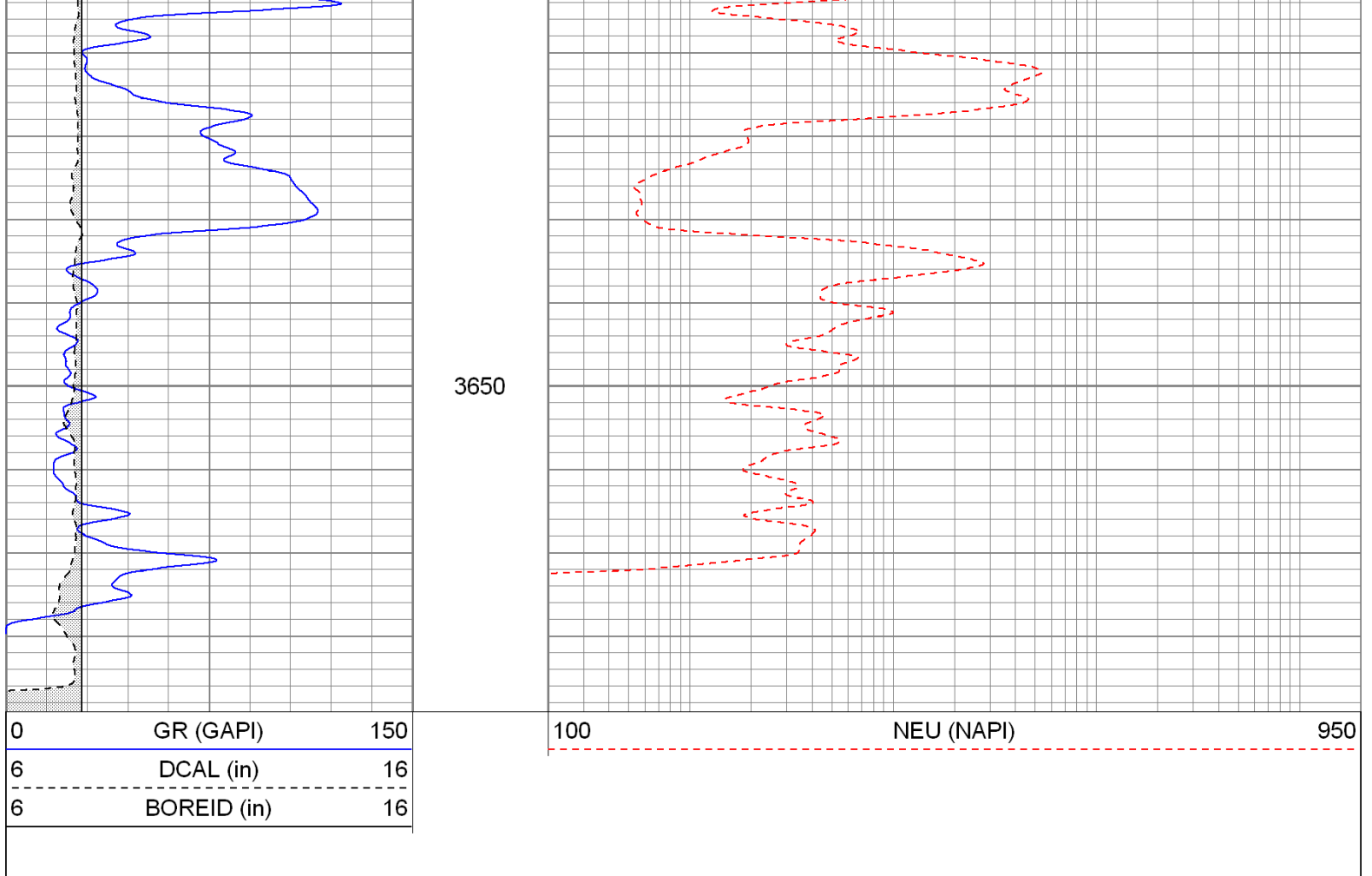
Repeat Pass

Database File: pdicrissman#4oh.db
 Dataset Pathname: pass4
 Presentation Format: krg
 Dataset Creation: Thu Oct 27 13:06:34 2011 by Calc Open-Cased 100827
 Charted by: Depth in Feet scaled 1:240

0	GR (GAPI)	150
6	DCAL (in)	16
6	BOREID (in)	16

100	NEU (NAPI)	950
-----	------------	-----





Calibration Report

Database File: pdicrissman#4oh.db
 Dataset Pathname: pass3.1
 Dataset Creation: Wed Oct 26 22:34:22 2011 by Calc Open-Cased 100827

Compensated Density Calibration Report

Serial-Model: 2388DHT-DHT
 Source / Verifier: /
 Master Calibration Performed: Mon Sep 26 12:42:46 2011

Master Calibration

	Density		Far Detector	Near Detector	
Magnesium	1.750	g/cc	688.93	303.28	cps
Aluminum	2.670	g/cc	128.53	194.02	cps
Spine Angle = 75.10			Density/Spine Ratio = 0.530		
	Size		Reading		
Small Ring	8.15	in	5771.32		
Large Ring	14.00	in	10165.20		

Gamma Ray Calibration Report

Serial Number: 2000
 Tool Model: P2000
 Performed: Sun Oct 23 08:45:30 2011
 Calibrator Value: 1.0 GAPI

Background Reading: 0.0 cps
 Calibrator Reading: 1.0 cps
 Sensitivity: 0.2200 GAPI/cps

Neutron Calibration Report

Serial Number: 5108
 Tool Model: PROBE
 Performed: Wed Oct 19 06:16:06 2011
 Calibrator Value: 1 NAPI
 Calibrator Reading: 1 cps
 Sensitivity: 1 NAPI/cps

Sensor	Offset (ft)	Schematic	Description	Len (ft)	OD (in)	Wt (lb)
NEU	16.49		None	0.75	1.50	5.00
			NEU-PROBE (5108) Probe	4.92	3.63	85.00
GR	11.10		GR-P2000 (2000)	3.67	3.25	40.00
LSD	2.31		CDL-DHT (2388DHT) Digital High Temp CDL Tool	9.69	4.00	201.00
DCAL	2.02					
SSD	1.77					
HEADVOLT	0.00					

Dataset: pdicrissman#4oh.db: field/well/run1/pass3.1
 Total Length: 19.02 ft
 Total Weight: 331.00 lb
 O.D.: 4.00 in