



Radiation Guard Log

DIGITAL LOG (785) 625-3858

15-167-23,746-00-00

API No.

Company **Owen's Pumping Service**
 Well **Boxberger "A" No. 14**
 Field **Hall-Gurney**
 County **Russell** State **Kansas**

Location **330' FSL & 2310' FWL**

Sec: **14** Twp: **14 S** Rge: **14 W**

Permanent Datum **Ground Level** Elevation **1817**
 Log Measured From **Kelly Bushing** **5** Ft. Above Perm. Datum
 Drilling Measured From **Kelly Bushing**

Other Services
MEL
 Elevation
K.B. 1822
D.F. 1817
G.L. 1817

Date	9/28/2011
Run Number	One
Depth Driller	3250
Depth Logger	3247
Bottom Logged Interval	3246
Top Log Interval	400
Casing Driller	8.625 @ 434
Casing Logger	426
Bit Size	7.875
Type Fluid in Hole	Chemical
Salinity, ppm CL	3700
Density / Viscosity	8.9 59
pH / Fluid Loss	11.0 6.4
Source of Sample	Flowline
Rm @ Meas. Temp	1.3 @ 74
Rmf @ Meas. Temp	.98 @ 74
Rmc @ Meas. Temp	1.76 @ 74
Source of Rmf / Rmc	Charts
Rm @ BHT	.89 @ 109
Operating Rig Time	4 Hours
Max Rec. Temp. F	109
Equipment Number	15
Location	Hays
Recorded By	D.Kerr
Witnessed By	Francis Whisler

<<< Fold Here >>>

All interpretations are opinions based on inferences from electrical or other measurements and we cannot and do not guarantee the accuracy or correctness of any interpretation, and we shall not, except in the case of gross or willful negligence on our part, be liable or responsible for any loss, costs, damages, or expenses incurred or sustained by anyone resulting from any interpretation made by any of our officers, agents or employees. These interpretations are also subject to our general terms and conditions set out in our current Price Schedule.

Comments

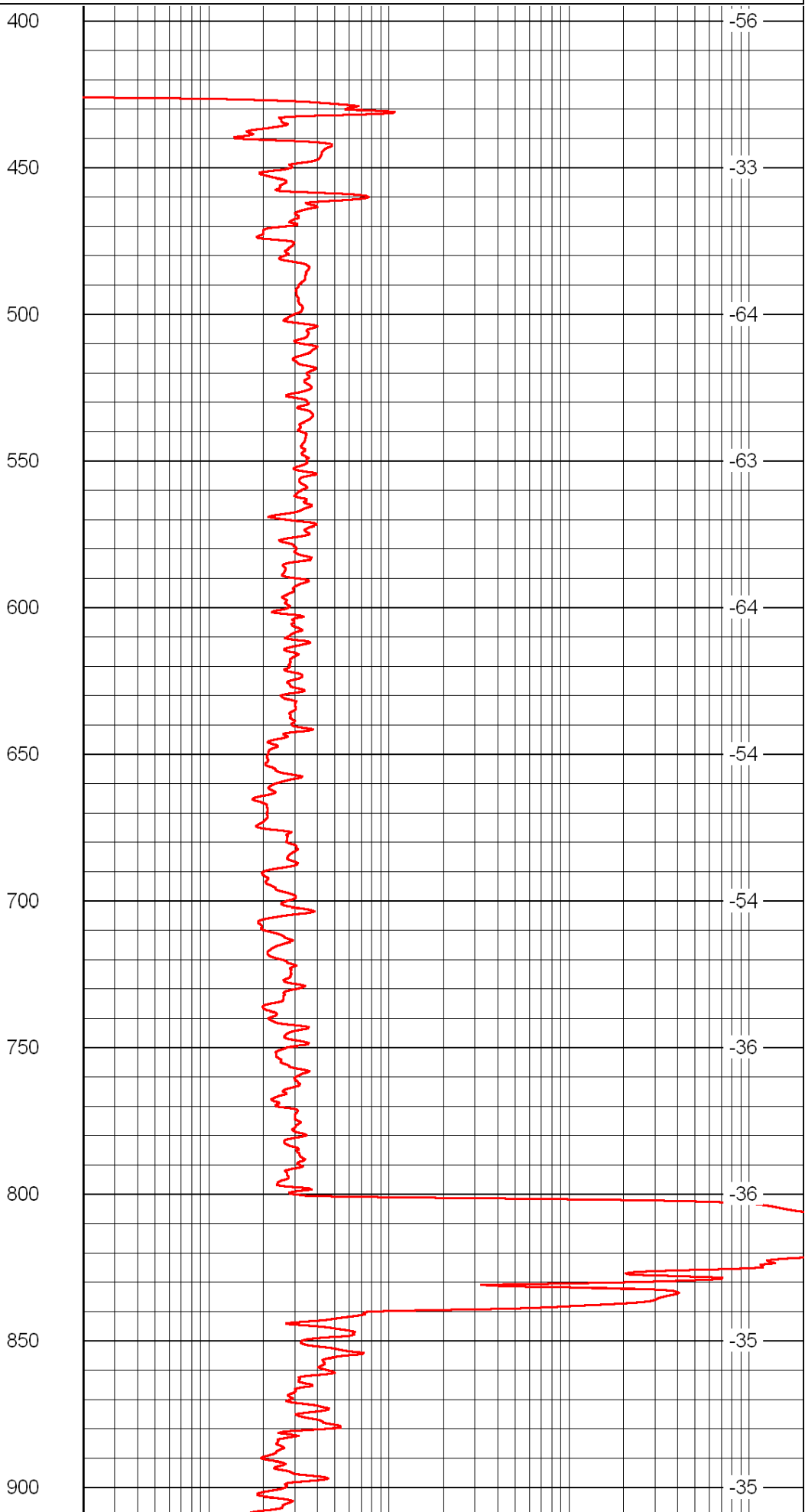
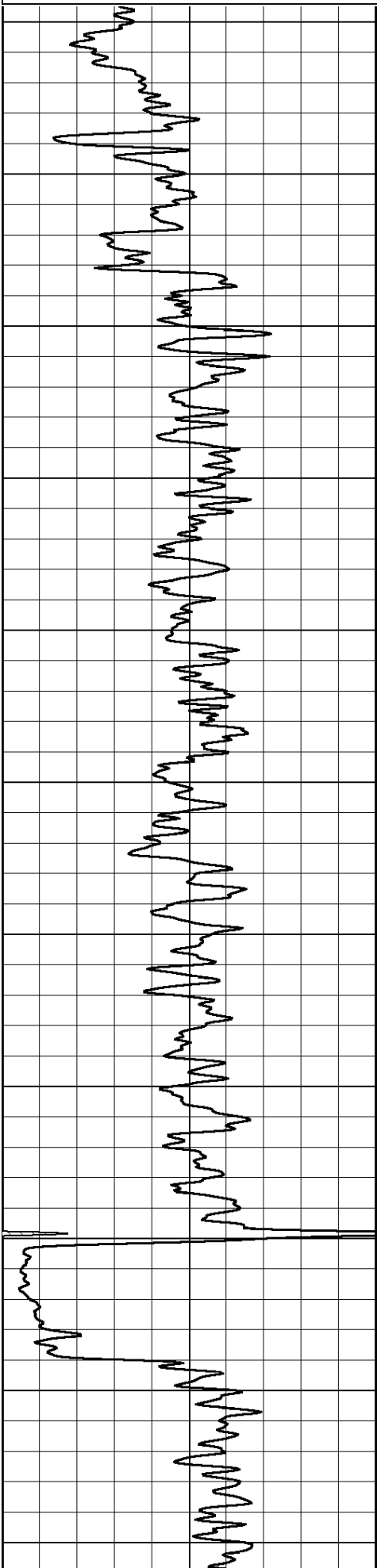
Thank you for using Log-Tech, Inc.
 (785) 625-3858

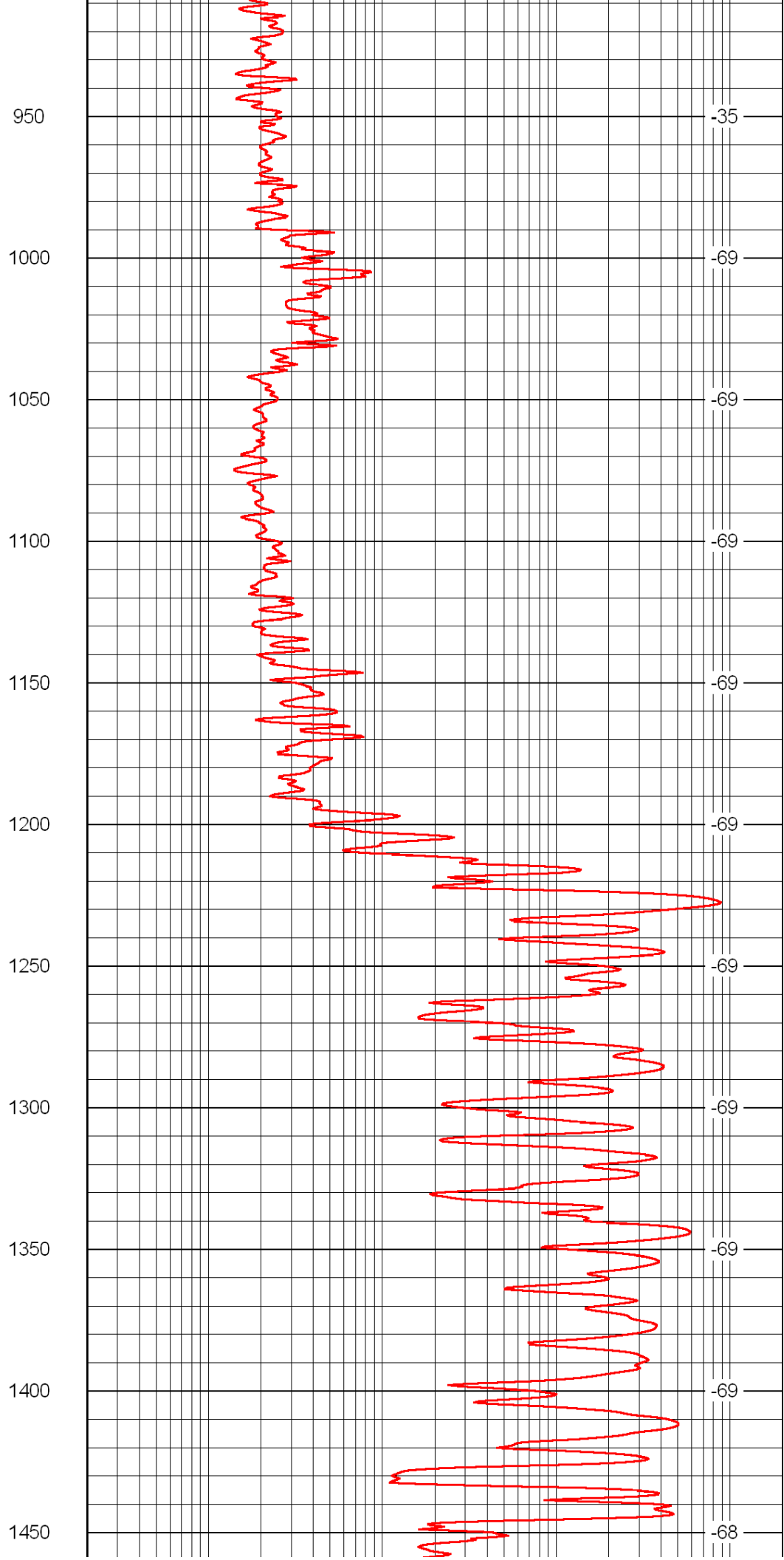
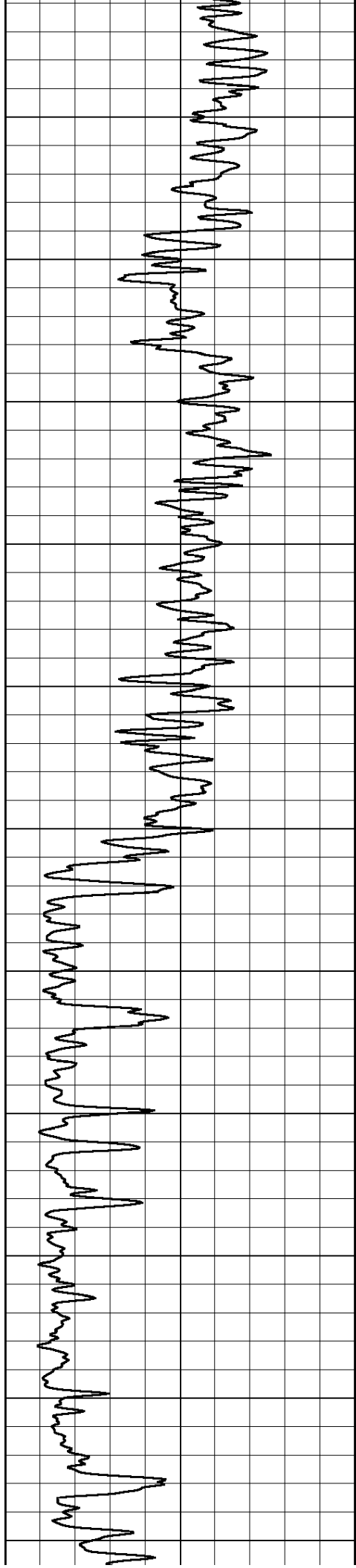
 Russell KS, 2 South to Plymouth RD,
 1/4 West North Into

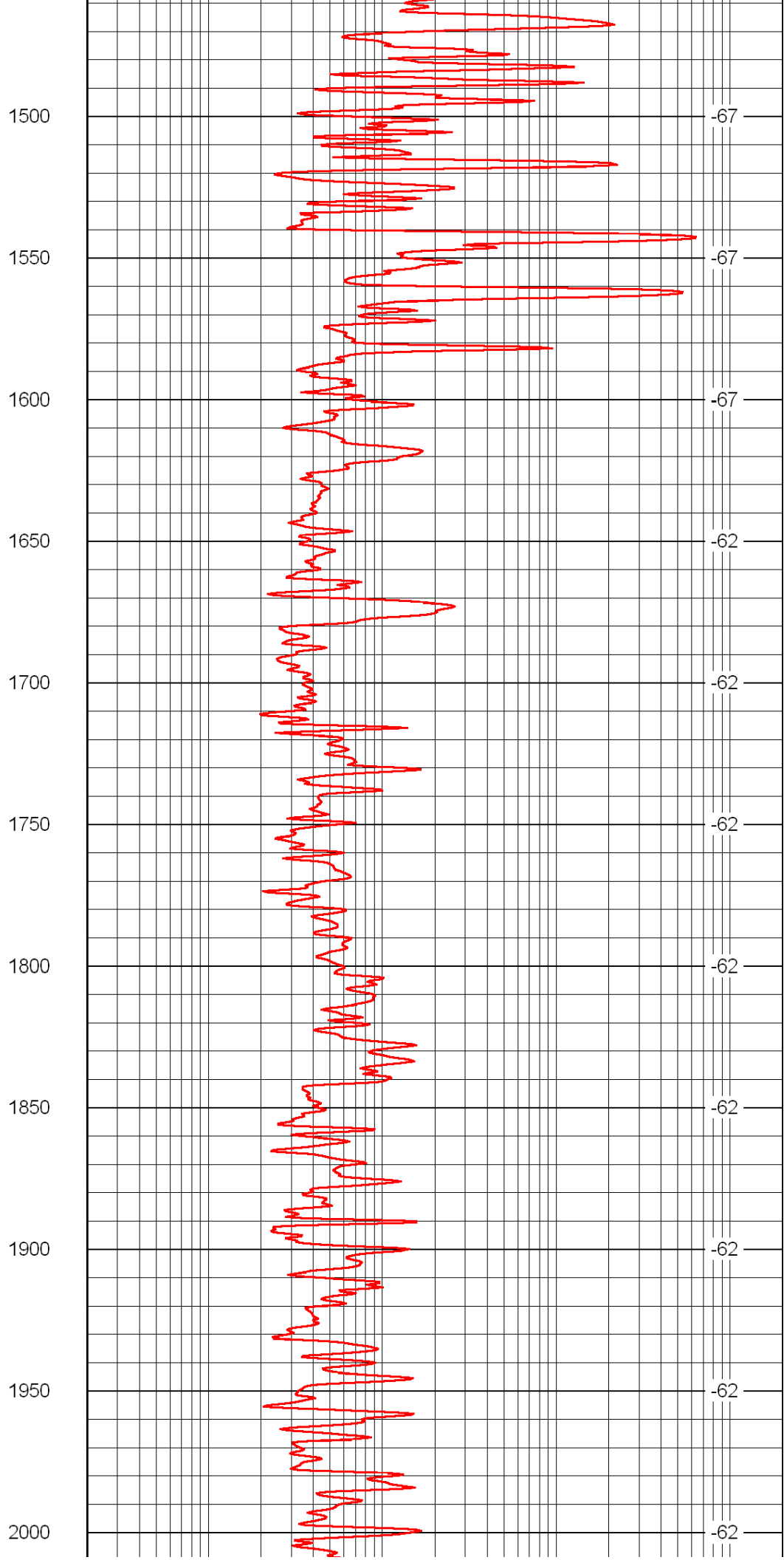
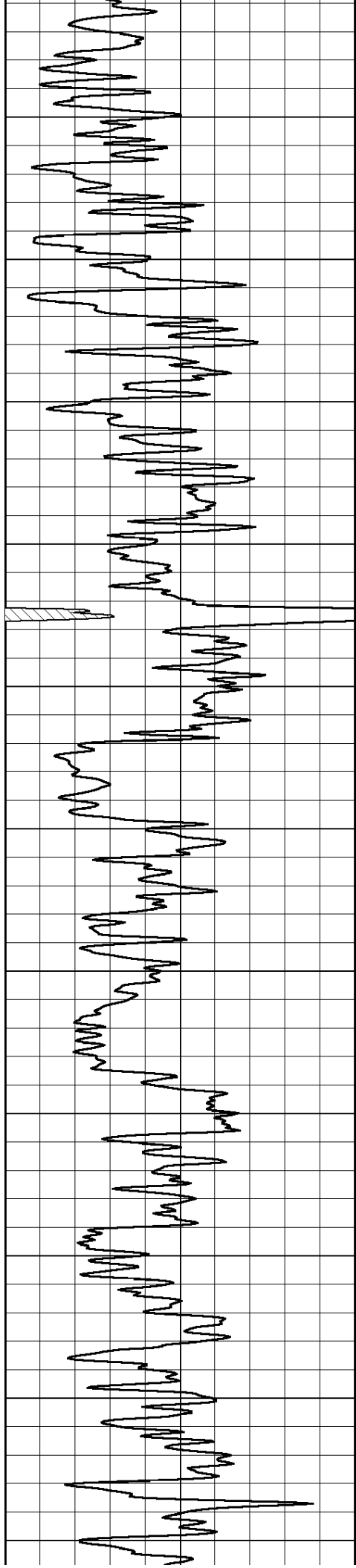
0 Gamma Ray 150

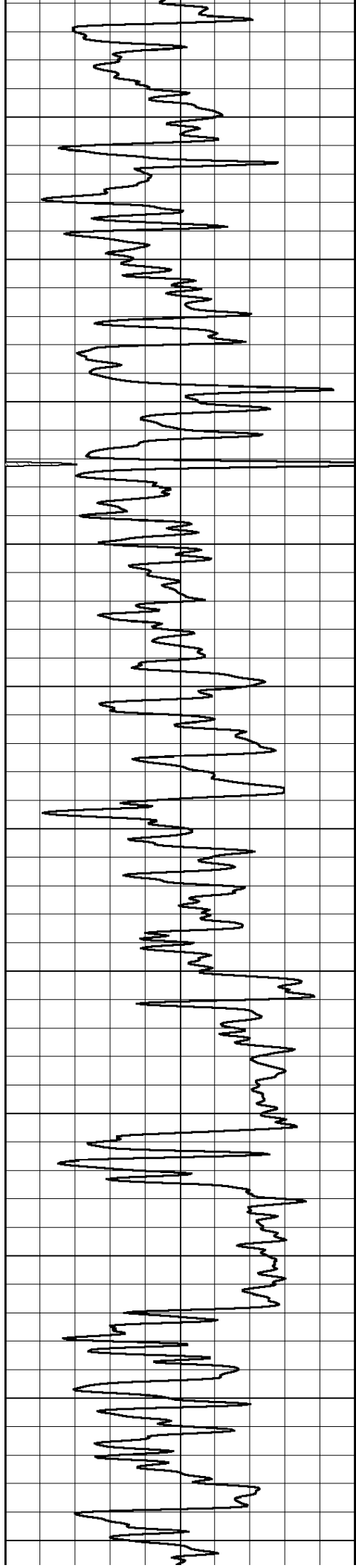
0.2 lgrd 2000

LSPD









2050

2100

2150

2200

2250

2300

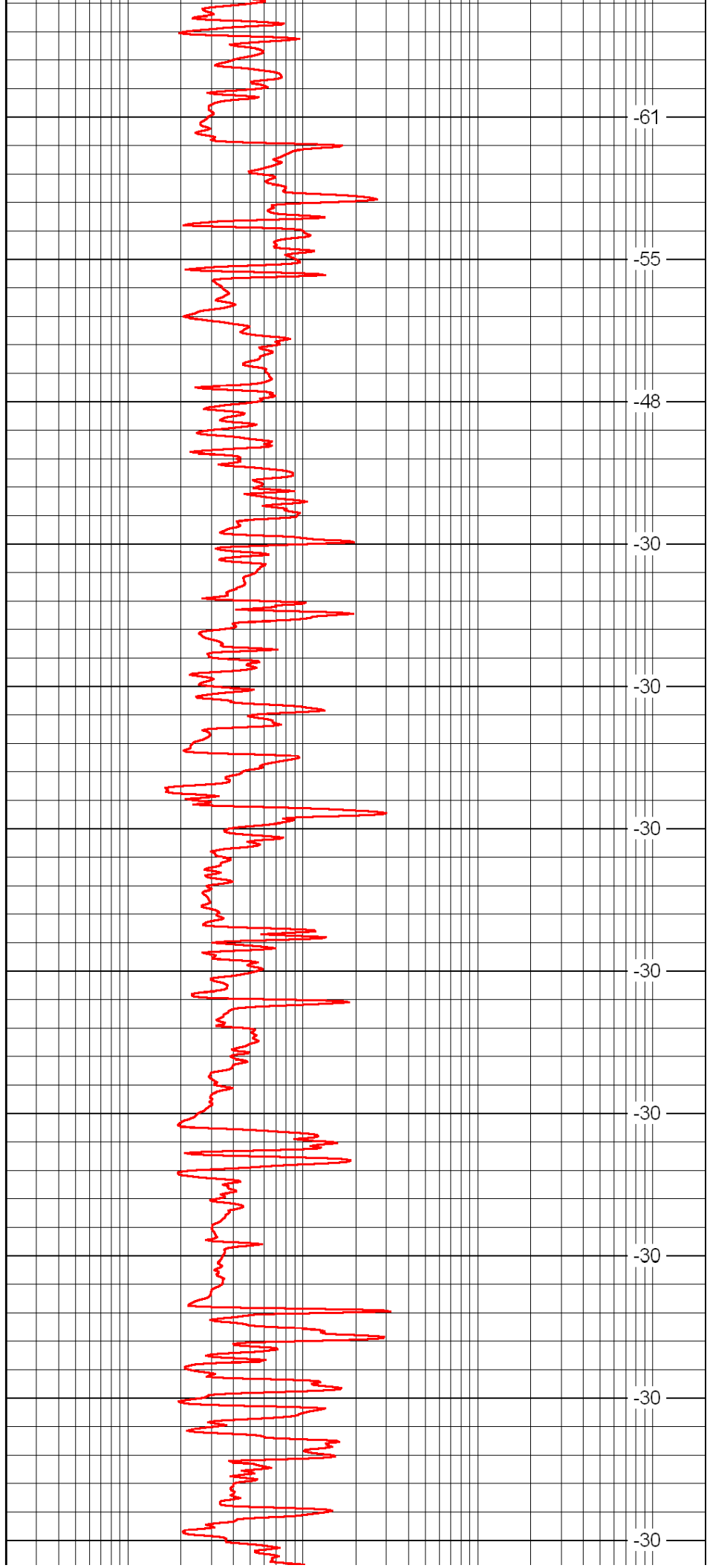
2350

2400

2450

2500

2550



-61

-55

-48

-30

-30

-30

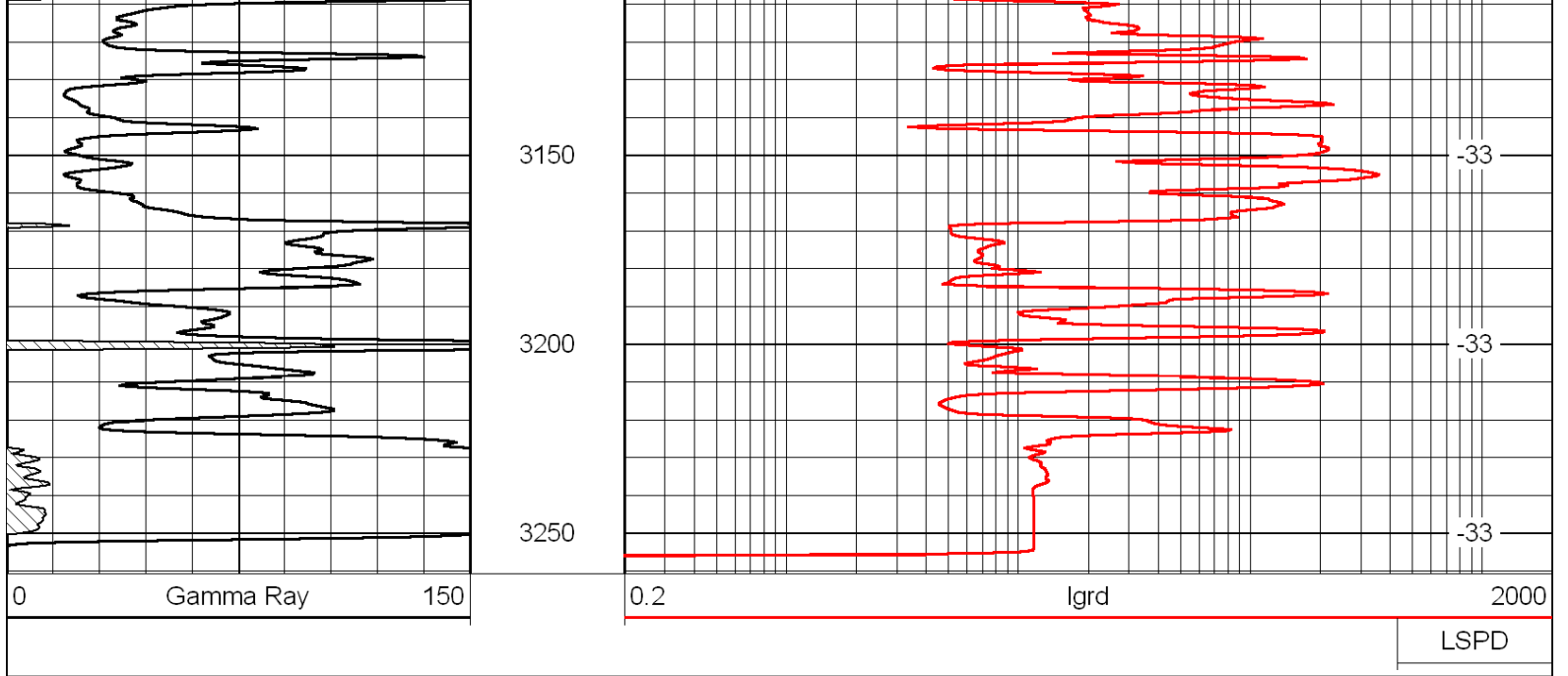
-30

-30

-30

-30

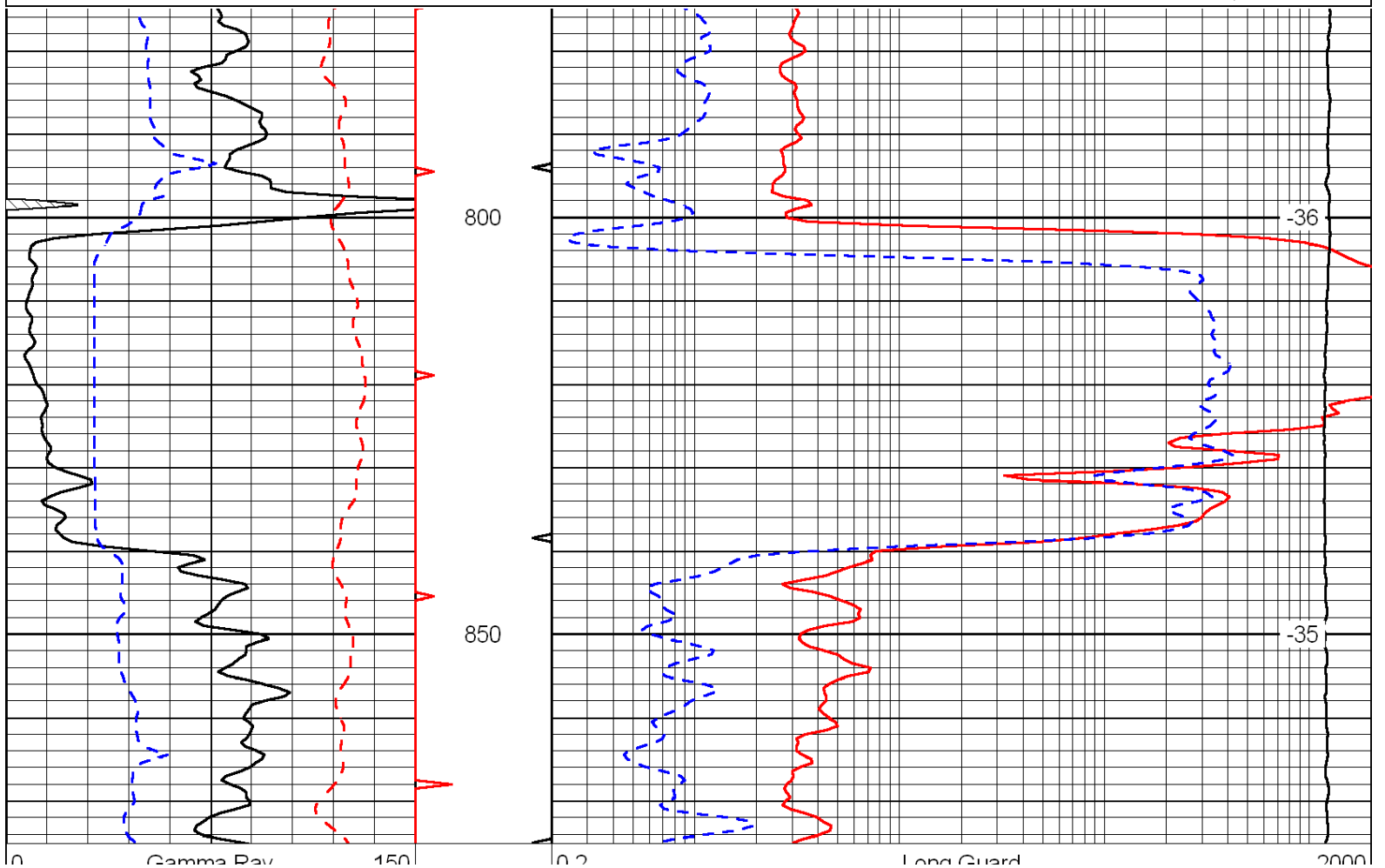
-30



Database File: c:\warrior\data\owen's pumping_boxberger a no. 14\owenspumping_boxberger_a_14hd.db
 Dataset Pathname: RAG/ownrag
 Presentation Format: rag
 Dataset Creation: Wed Sep 28 10:56:19 2011
 Charted by: Depth in Feet scaled 1:240

0	Gamma Ray	150	0.2	Long Guard	2000
6	Caliper (GAPI)	16	560	Neuton	2160
-200	SP (mV)	0	15000	Line Tension	0

LSPD



0	Gamma Ray	150
6	Caliper (GAPI)	16
-200	SP (mV)	0

0.2	Long Guard	2000
560	Neuton	2160
15000	Line Tension	0

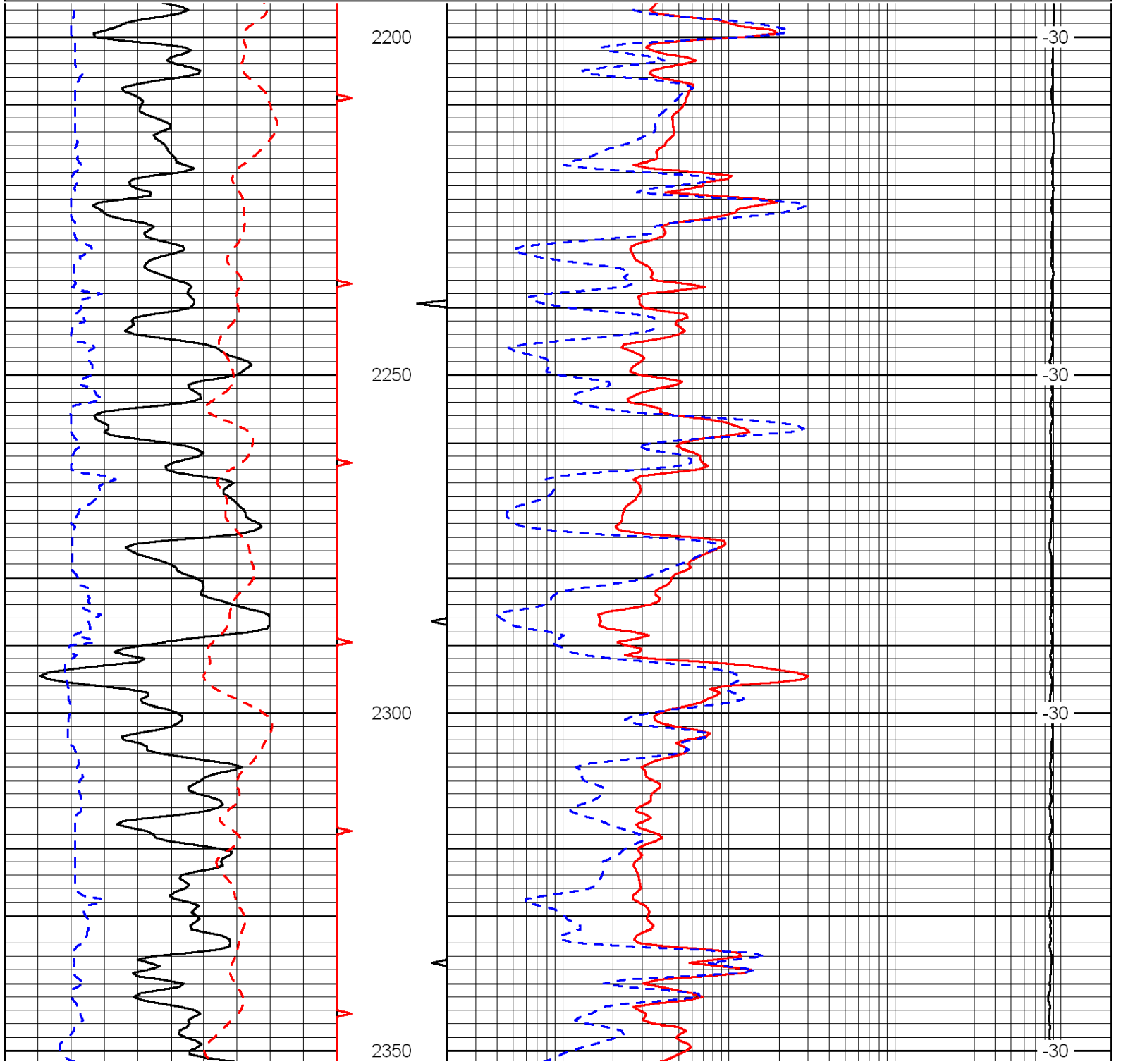
LSPD

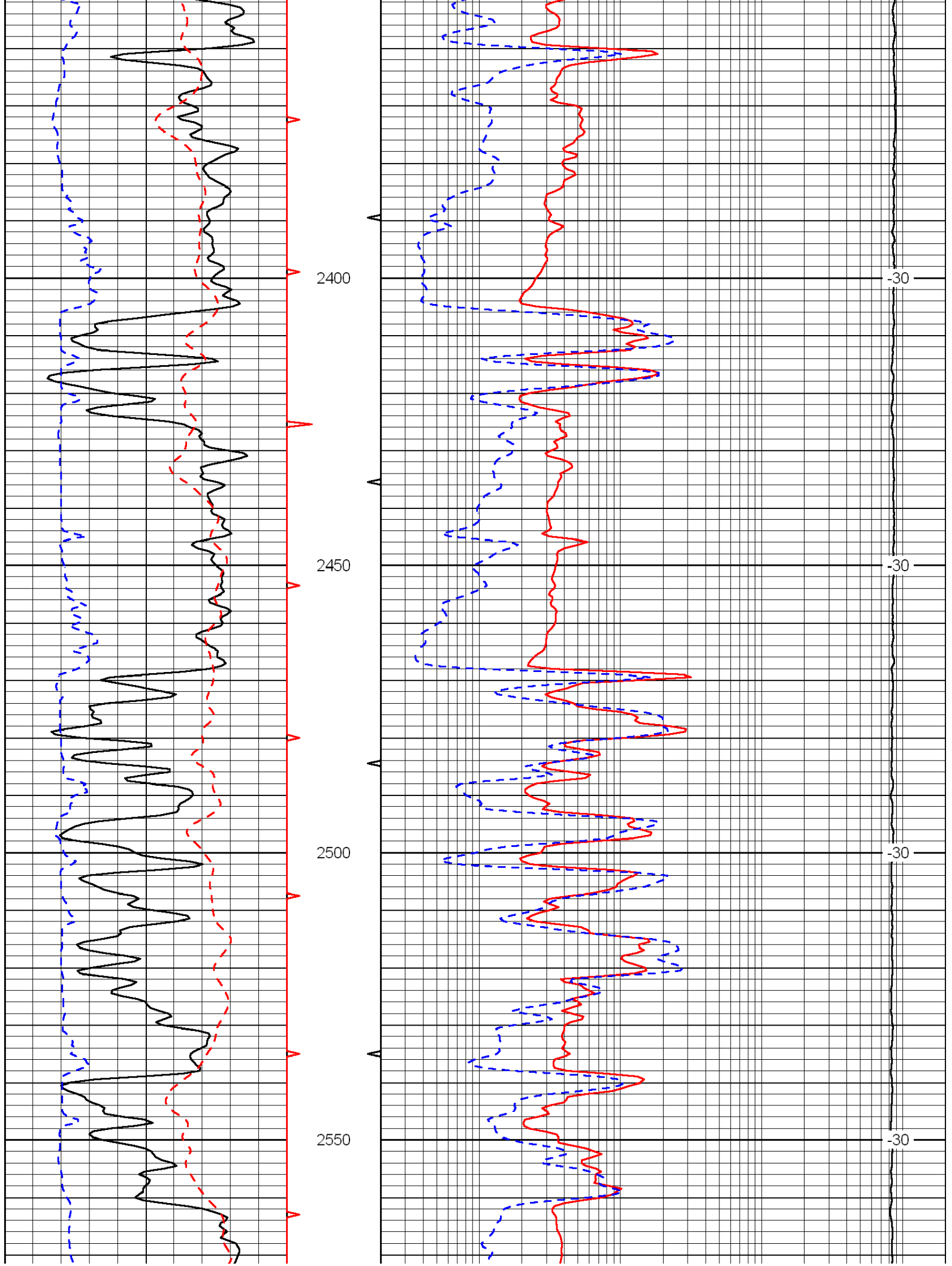
Database File: c:\warrior\data\owen's pumping_boxberger a no. 14\owenspumping_boxberger_a_14hd.db
 Dataset Pathname: RAG/ownrag
 Presentation Format: rag
 Dataset Creation: Wed Sep 28 10:56:19 2011
 Charted by: Depth in Feet scaled 1:240

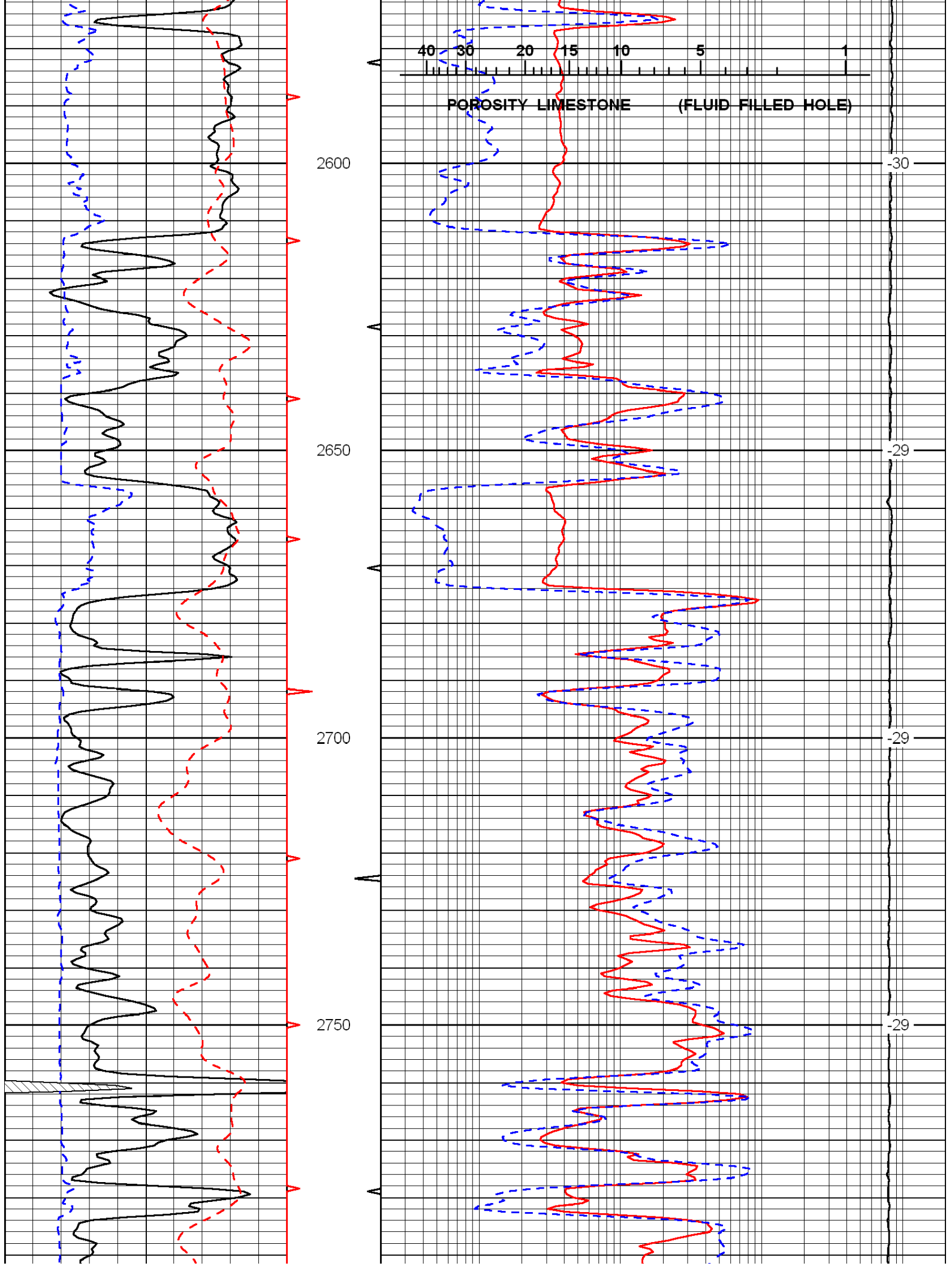
0	Gamma Ray	150
6	Caliper (GAPI)	16
-200	SP (mV)	0

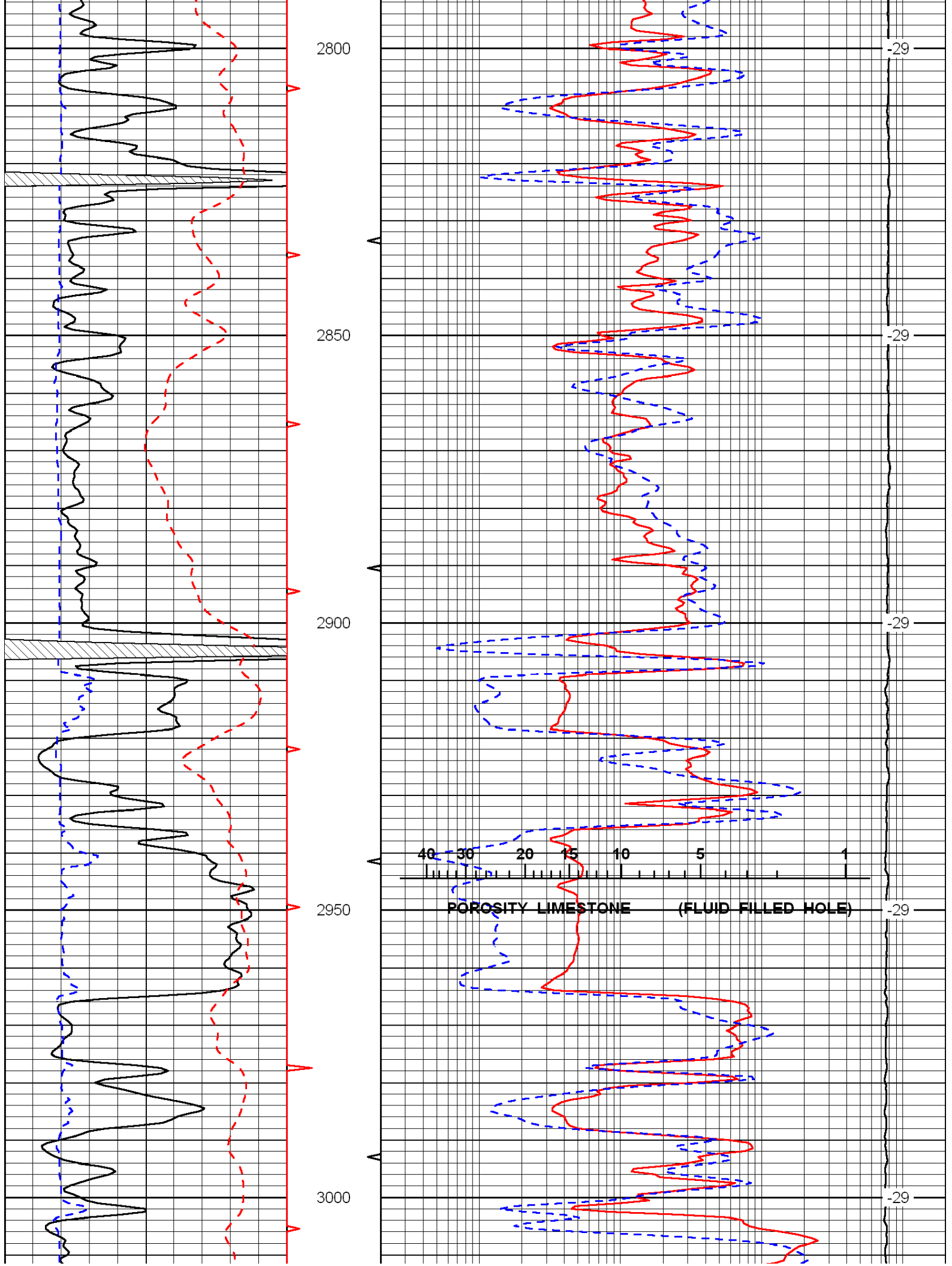
0.2	Long Guard	2000
560	Neuton	2160
15000	Line Tension	0

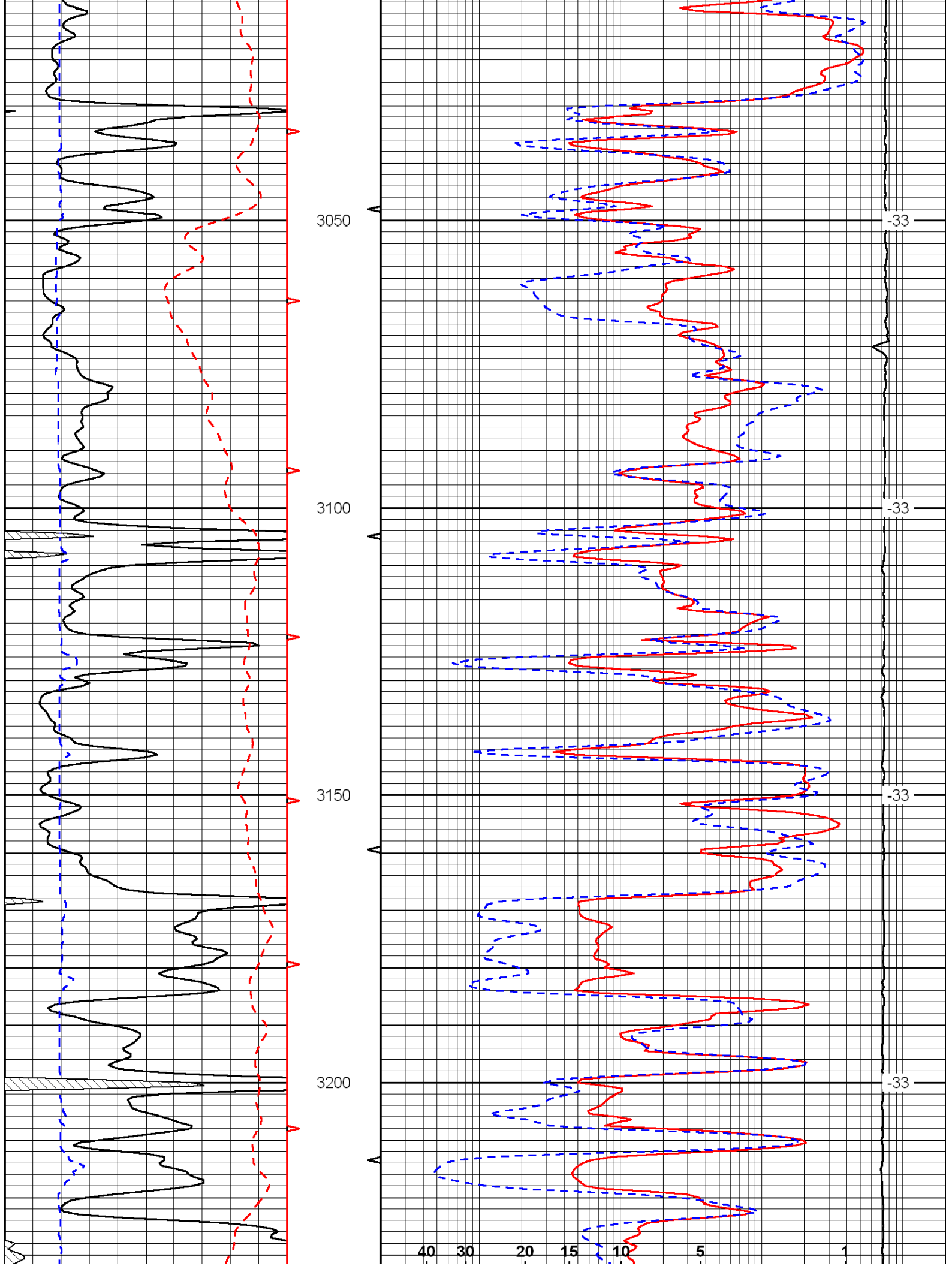
LSPD

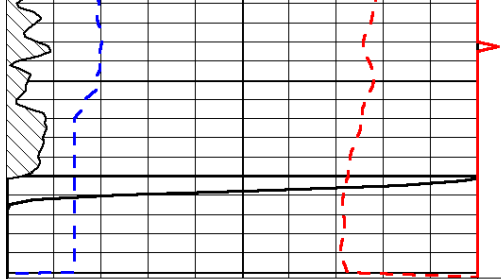










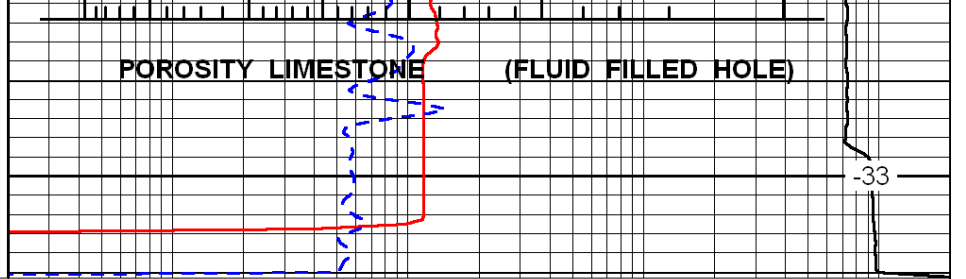


3250

0 Gamma Ray 150

6 Caliper (GAPI) 16

-200 SP (mV) 0



-33

0.2 Long Guard 2000

560 Neutron 2160

15000 Line Tension 0

LSPD