



DIGITAL LOG (785) 625-3858

Microresistivity Log

15-167-23,746-00-00

API No.

Company Owen's Pumping Service
 Well Boxberger "A" No. 14
 Field Hall-Gurney
 County Russell State Kansas

Location 330' FSL & 2310' FWL

Sec: 14 Twp: 14 S Rge: 14 W

Permanent Datum Ground Level Elevation 1817
 Log Measured From Kelly Bushing 5 Ft. Above Perm. Datum
 Drilling Measured From Kelly Bushing

Other Services
 RAG
 Elevation
 K.B. 1822
 D.F. 1817
 G.L. 1817

Date	9/28/2011
Run Number	Two
Depth Driller	3250
Depth Logger	3247
Bottom Logged Interval	3246
Top Log Interval	2200
Casing Driller	8.625 @ 434
Casing Logger	426
Bit Size	7.875
Type Fluid in Hole	Chemical
Salinity, ppm CL	3700
Density / Viscosity	8.9 59
pH / Fluid Loss	11.0 6.4
Source of Sample	Flowline
Rm @ Meas. Temp	1.3 @ 74
Rmf @ Meas. Temp	.98 @ 74
Rmc @ Meas. Temp	1.76 @ 74
Source of Rmf / Rmc	Charts
Rm @ BHT	.89 @ 109
Operating Rig Time	4 Hours
Max Rec. Temp. F	109
Equipment Number	15
Location	Hays
Recorded By	D.Kerr
Witnessed By	Francis Whisler

<<< Fold Here >>>

All interpretations are opinions based on inferences from electrical or other measurements and we cannot and do not guarantee the accuracy or correctness of any interpretation, and we shall not, except in the case of gross or willful negligence on our part, be liable or responsible for any loss, costs, damages, or expenses incurred or sustained by anyone resulting from any interpretation made by any of our officers, agents or employees. These interpretations are also subject to our general terms and conditions set out in our current Price Schedule.

Comments

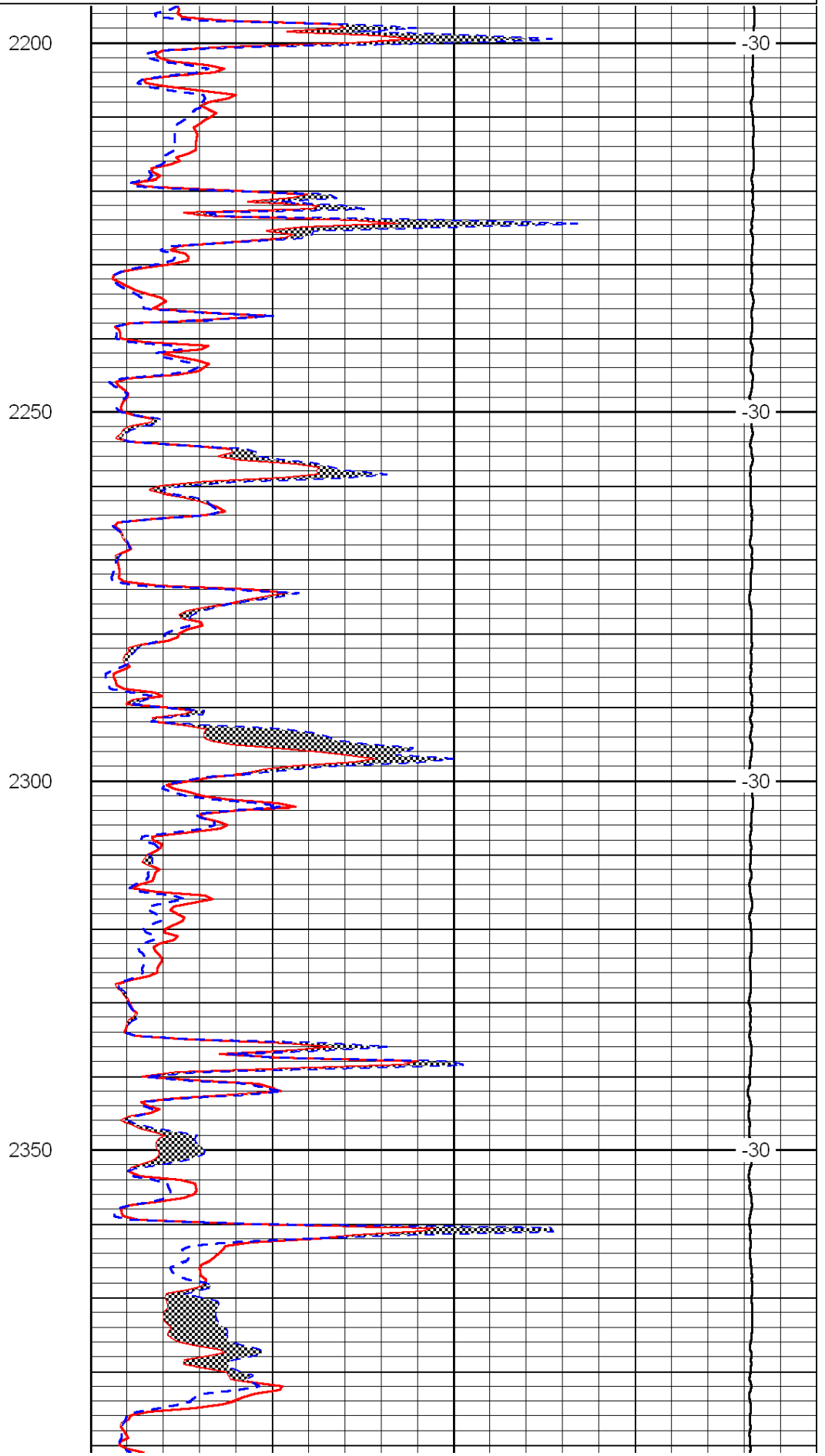
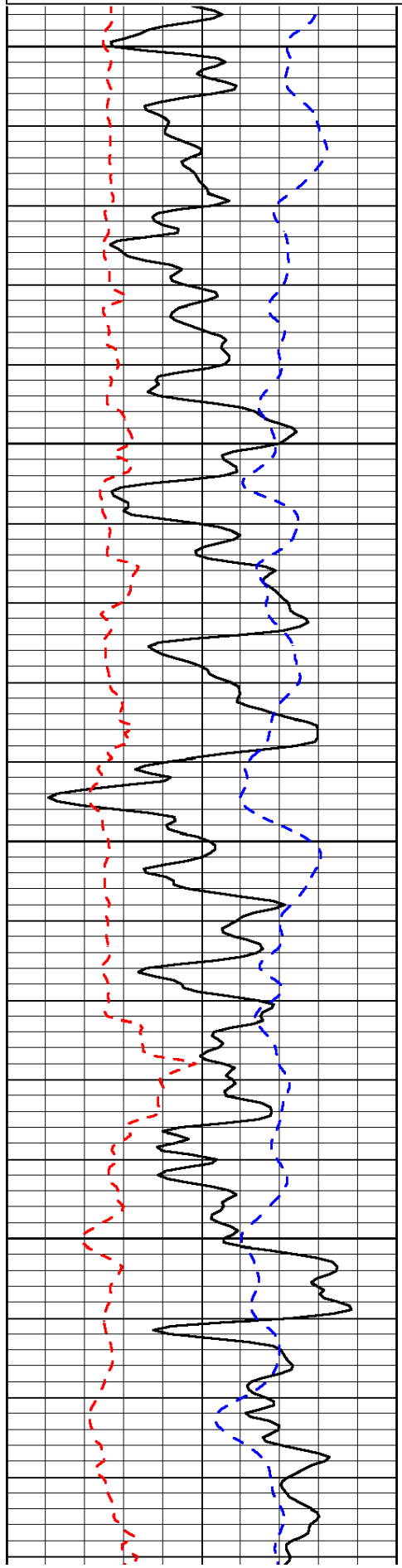
Thank you for using Log-Tech, Inc.
 (785) 625-3858
 Russell KS, 2 South to Plymouth RD,
 1/4 West North Into

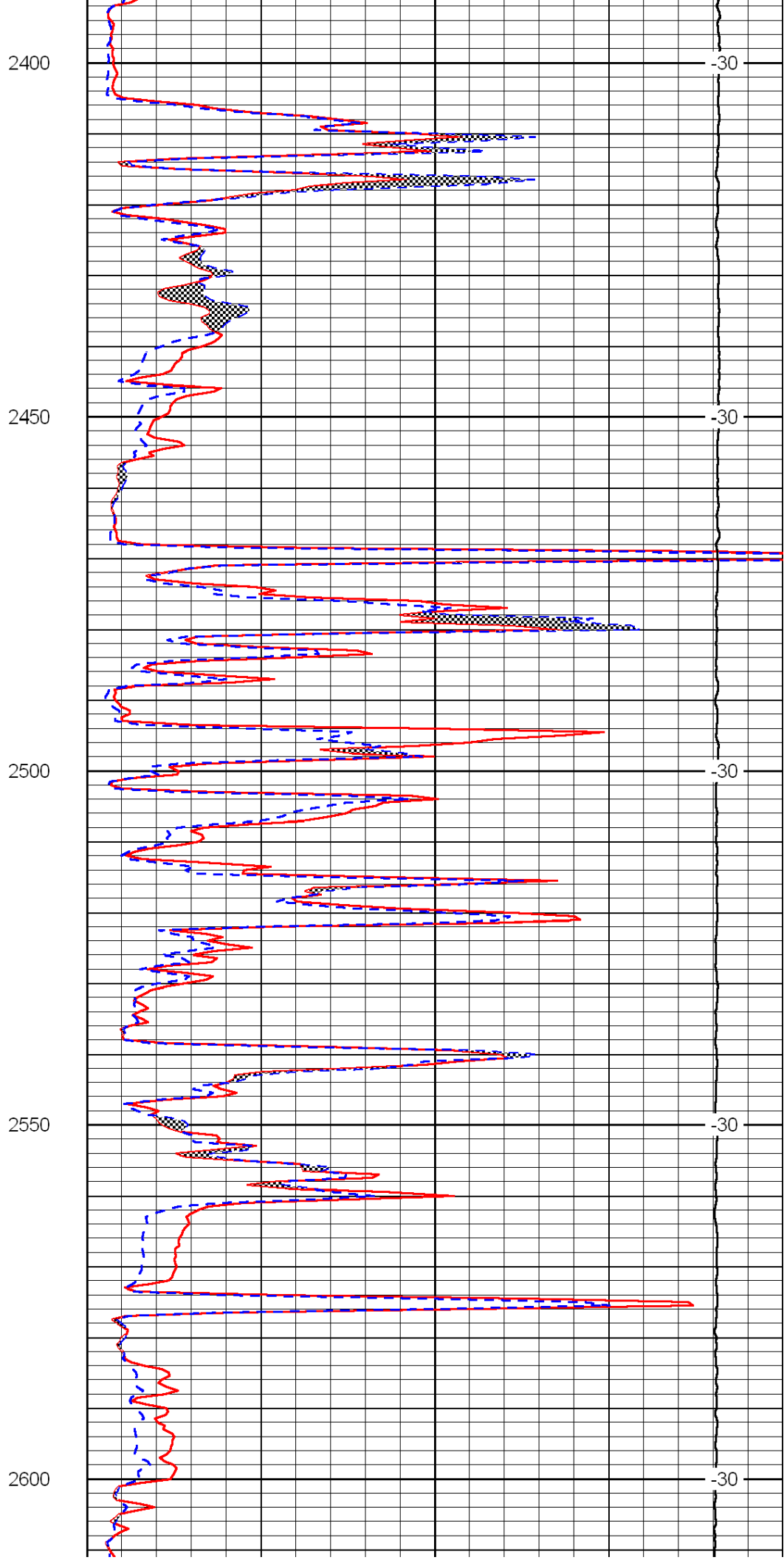
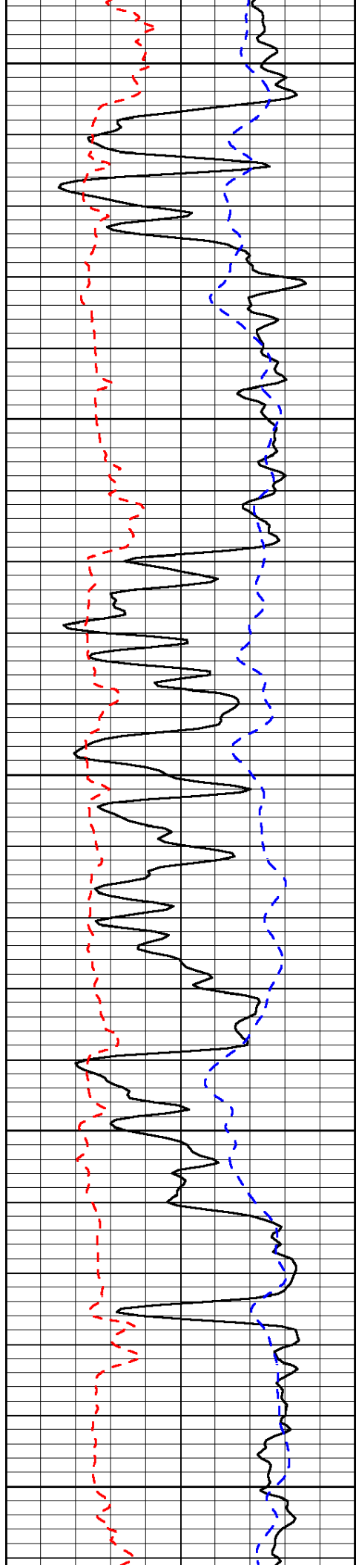
Database File: c:\warrior\data\owen's pumping_boxberger a no. 14\owenspumping_boxberger_a_14hd.db
 Dataset Pathname: RAG/ownrag
 Presentation Format: micro
 Dataset Creation: Wed Sep 28 10:56:19 2011
 Charted by: Depth in Feet scaled 1:240

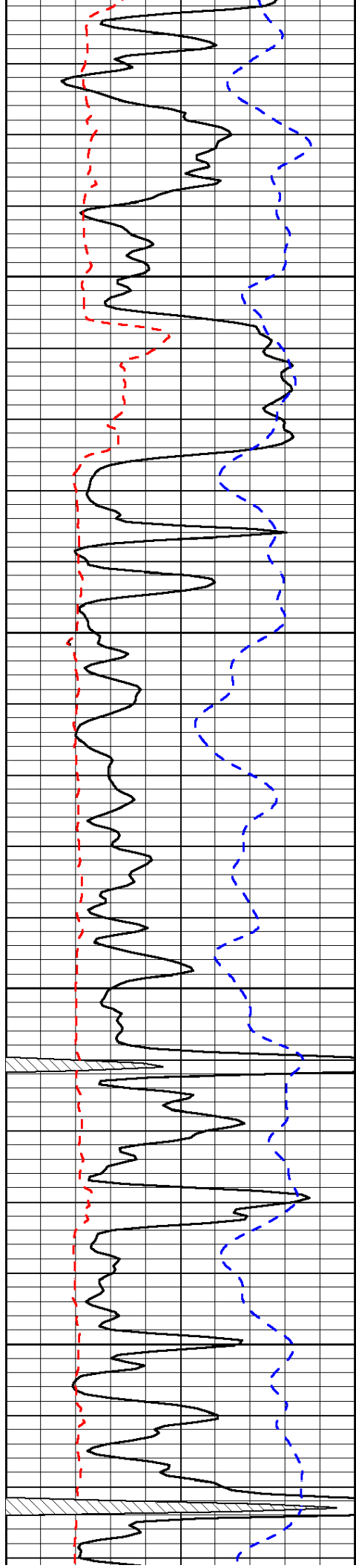
0	Gamma Ray	150
6	Micro Log Caliper (GAPI)	16
-200	SP (mV)	0

0	Micro Inverse 1 X 1	40
0	Micro Normal 2"	40
15000	Line Weight	0

LSPD





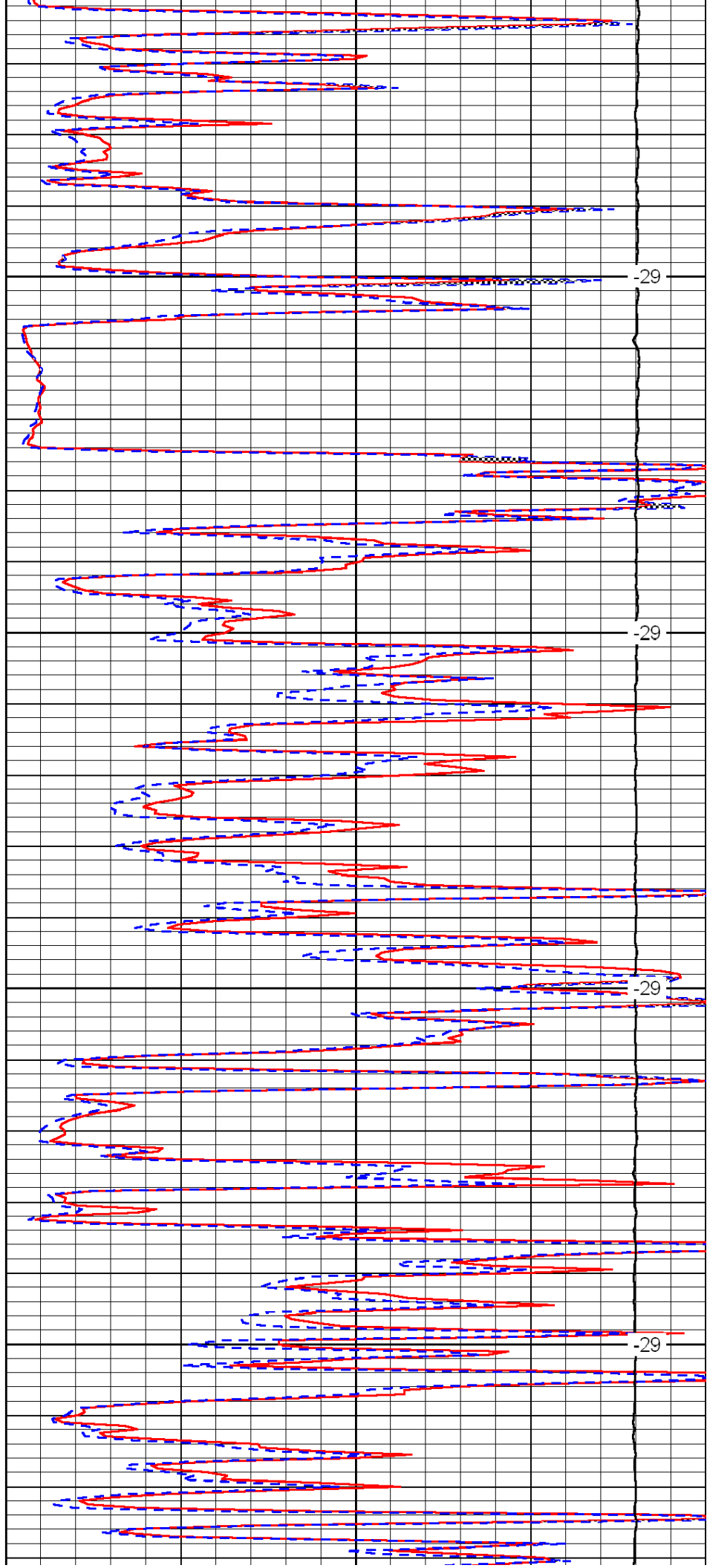


2650

2700

2750

2800

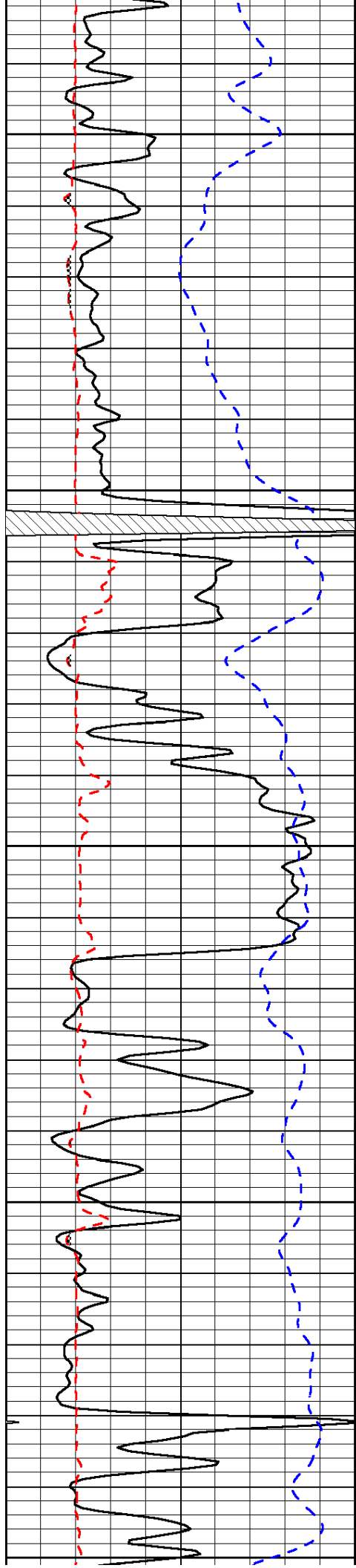


-29

-29

-29

-29



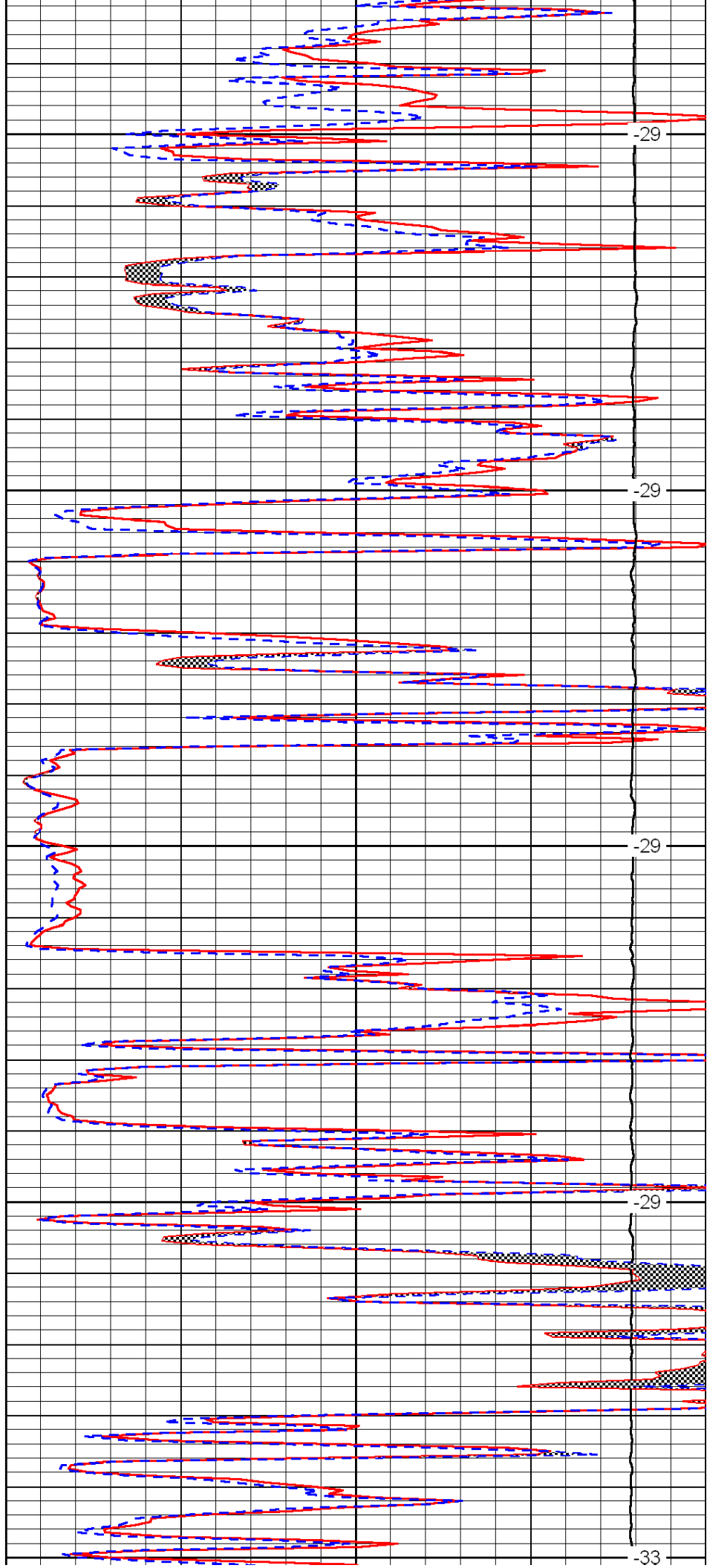
2850

2900

2950

3000

3050



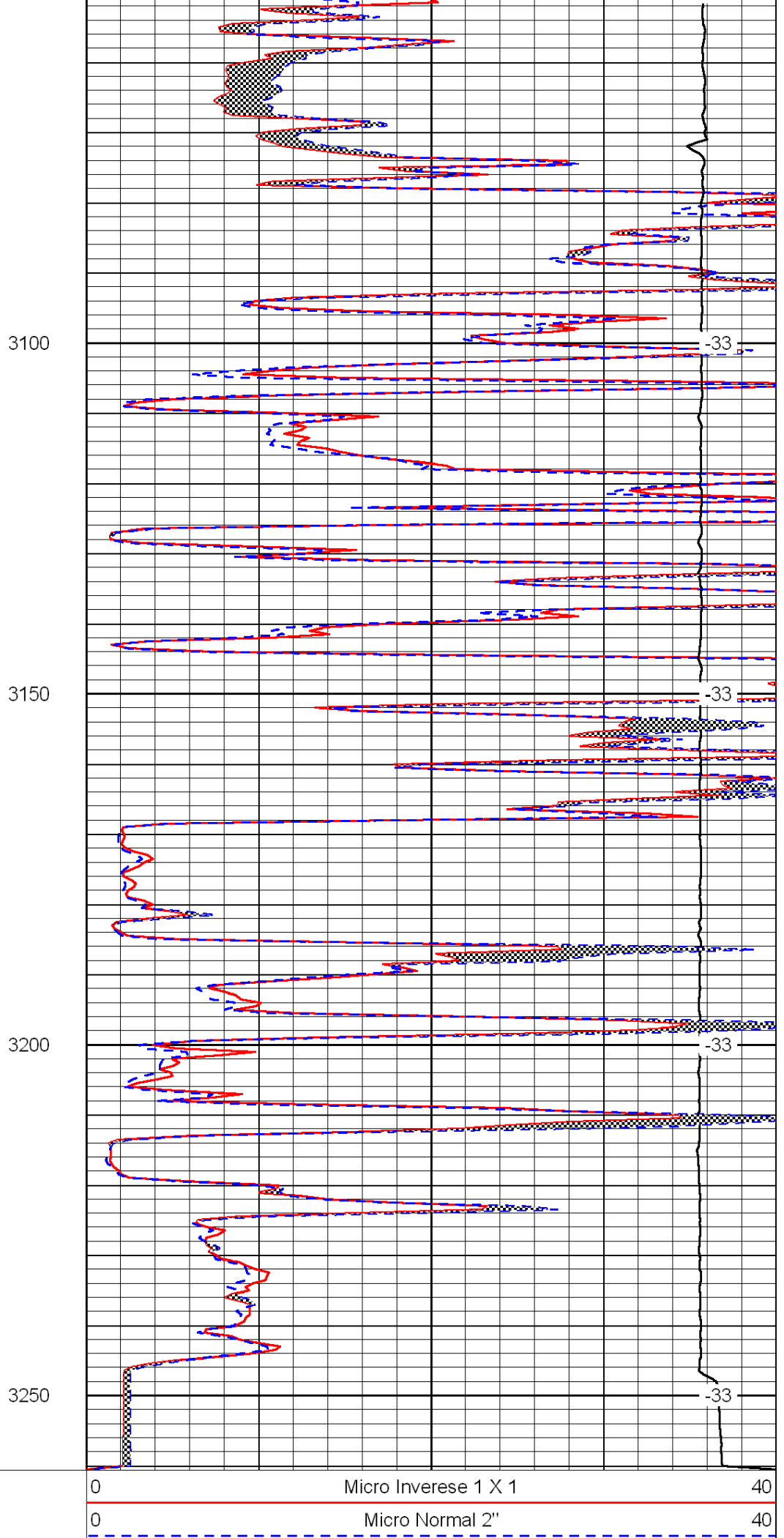
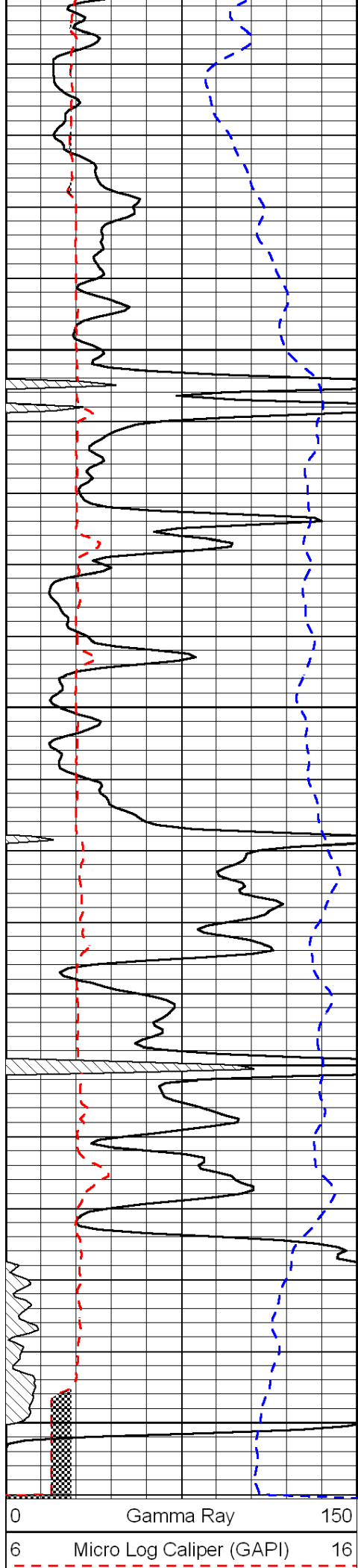
-29

-29

-29

-29

-33



-200 SP (mV) 0

15000 Line Weight 0

LSPD