



DIGITAL LOG (785) 625-3858

Microresistivity Log

15-147-20,653-00-00

API No.

Company **Bach Oil Production**
 Well **Knape No. 1**
 Field **Wildcat**
 County **Phillips** State **Kansas**

Location **2570' FSL & 1420' FEL**
 Sec: **18** Twp: **1 S** Rge: **18 W**

Other Services
 CNL/CDL
 DIL/BHCS

Permanent Datum **Ground Level** Elevation **2065**
 Log Measured From **Kelly Bushing** 5 Ft. Above Perm. Datum
 Drilling Measured From **Kelly Bushing**

Elevation
 K.B. 2070
 D.F. 2065
 G.L. 2065

Date	9/22/2011
Run Number	Two
Depth Driller	3737
Depth Logger	3738
Bottom Logged Interval	3737
Top Log Interval	3000
Casing Driller	8.625 @ 223
Casing Logger	224
Bit Size	7.875
Type Fluid in Hole	Chemical
Salinity, ppm CL	2000
Density / Viscosity	9.1 50
pH / Fluid Loss	9.0 8.8
Source of Sample	Flowline
Rm @ Meas. Temp	1.15 @ 68
Rmf @ Meas. Temp	.86 @ 68
Rmc @ Meas. Temp	1.55 @ 68
Source of Rmf / Rmc	Charts
Rm @ BHT	.68 @ 115
Operating Rig Time	5 Hours
Max Rec. Temp. F	115
Equipment Number	91
Location	Hays
Recorded By	D.Kerr
Witnessed By	Bob Peterson

<<< Fold Here >>>

All interpretations are opinions based on inferences from electrical or other measurements and we cannot and do not guarantee the accuracy or correctness of any interpretation, and we shall not, except in the case of gross or willful negligence on our part, be liable or responsible for any loss, costs, damages, or expenses incurred or sustained by anyone resulting from any interpretation made by any of our officers, agents or employees. These interpretations are also subject to our general terms and conditions set out in our current Price Schedule.

Comments

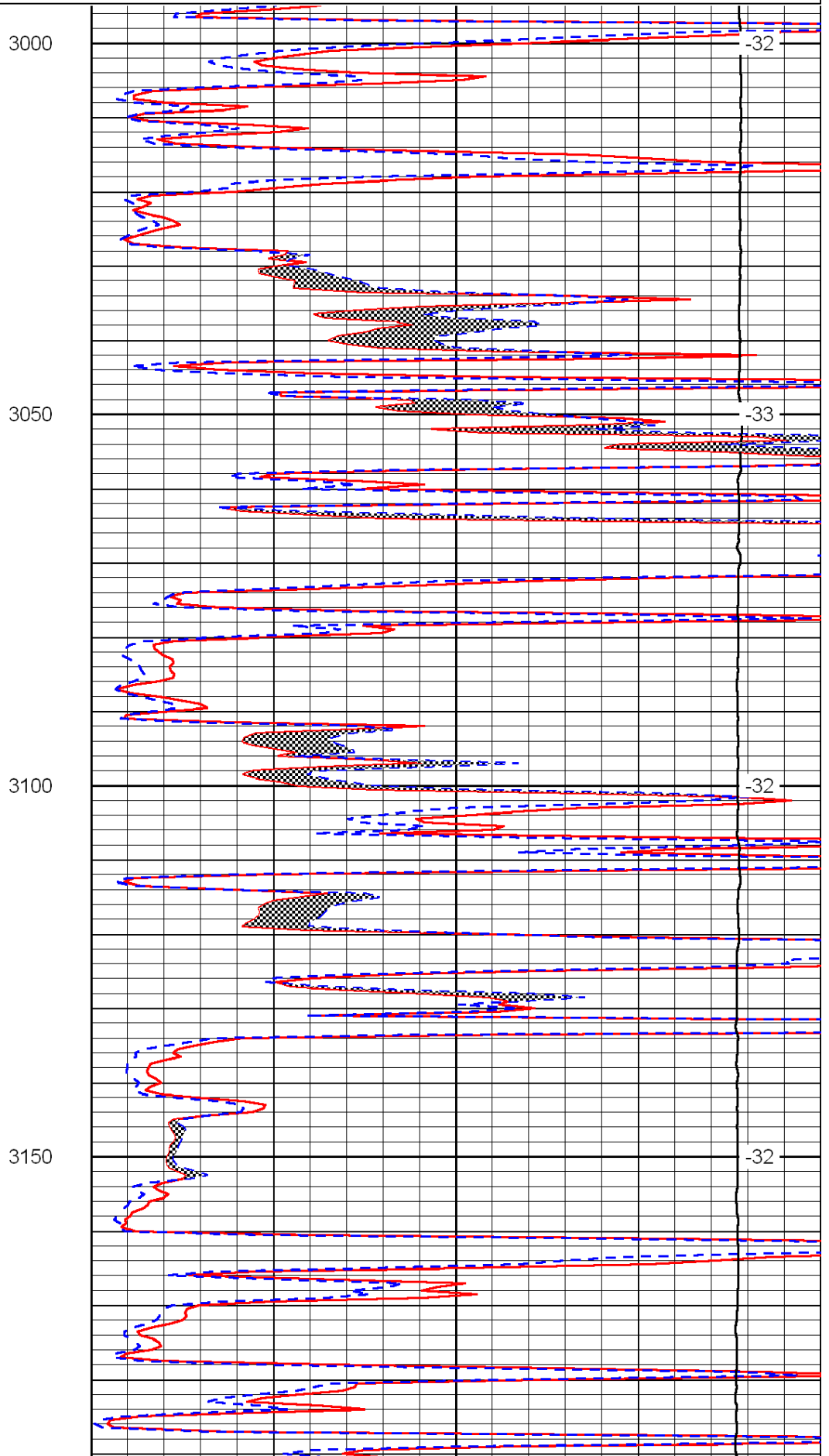
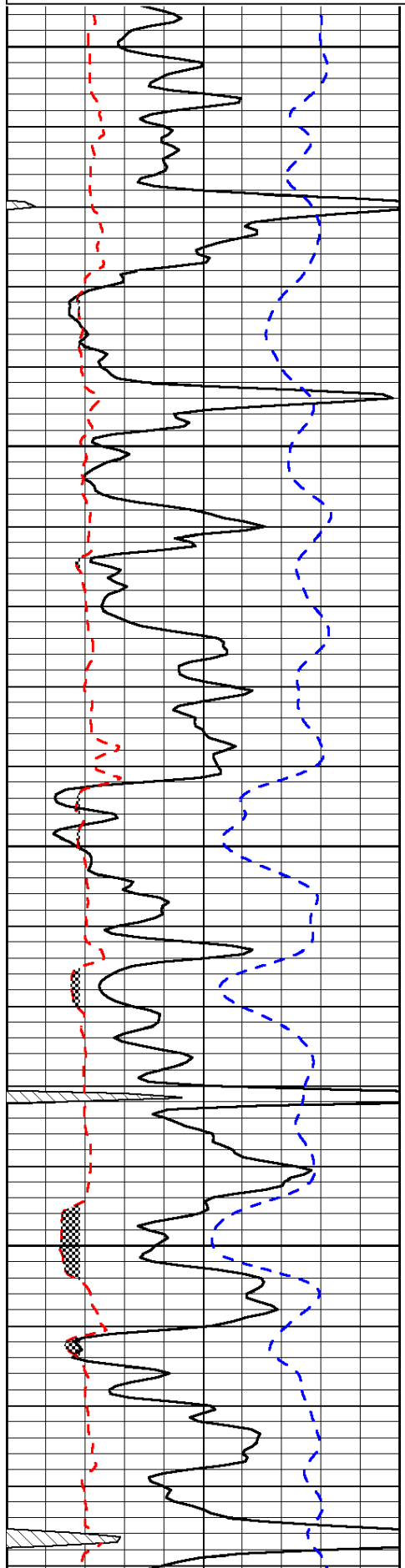
Thank you for using Log-Tech, Inc.
 (785) 625-3858
 Phillipsburg KS, North to 383 HWY,
 West to 300th RD, 2 1/2 South (Arcoss Wooden Bridge)
 West Into

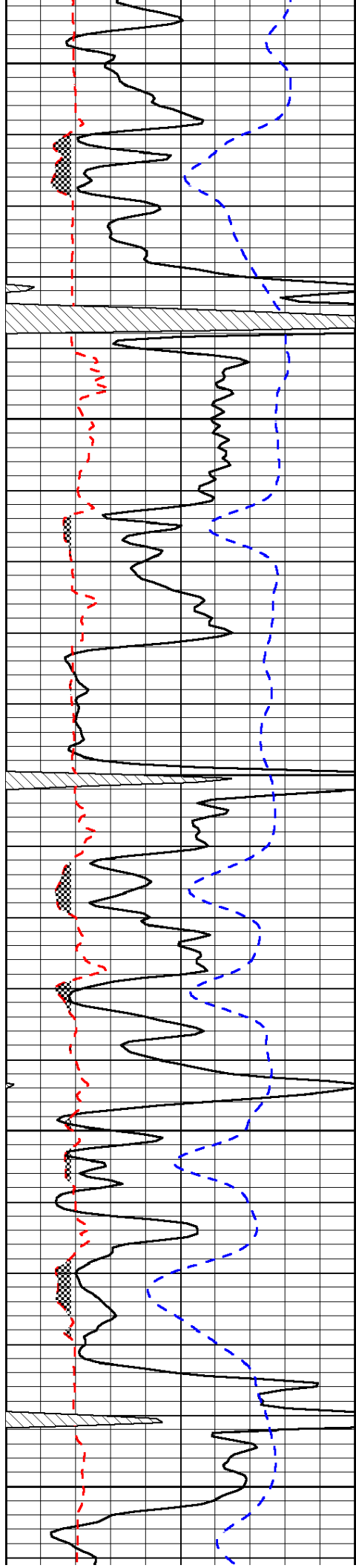
Database File: c:\warrior\data\bach_knape no. 1\bach_092211hd.db
 Dataset Pathname: DIL\bachstk
 Presentation Format: micro
 Dataset Creation: Thu Sep 22 12:21:36 2011
 Charted by: Depth in Feet scaled 1:240

0	Gamma Ray	150
6	Micro Log Caliper (GAPI)	16
-200	SP (mV)	0

0	Micro Inverse 1 X 1	40
0	Micro Normal 2"	40
15000	Line Weight	0

LSPD





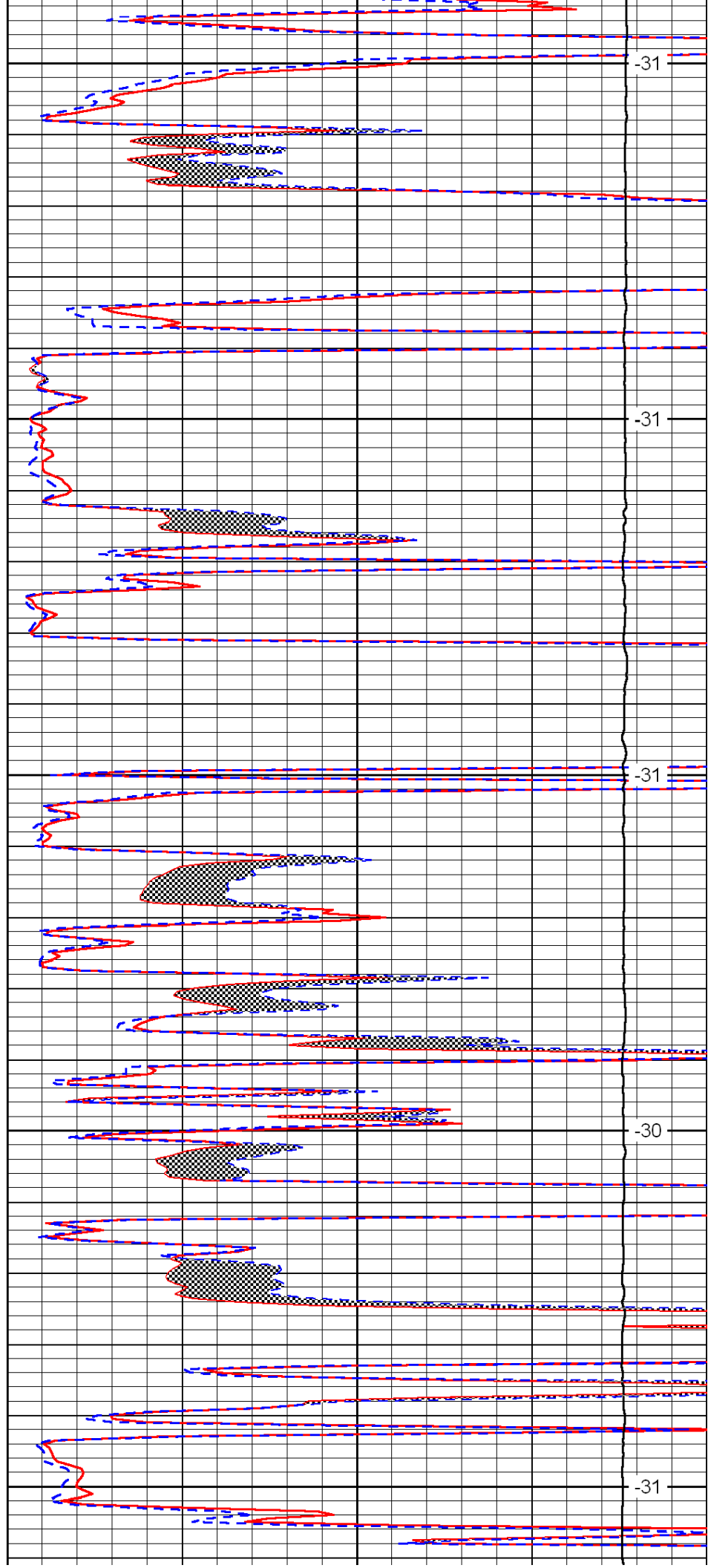
3200

3250

3300

3350

3400



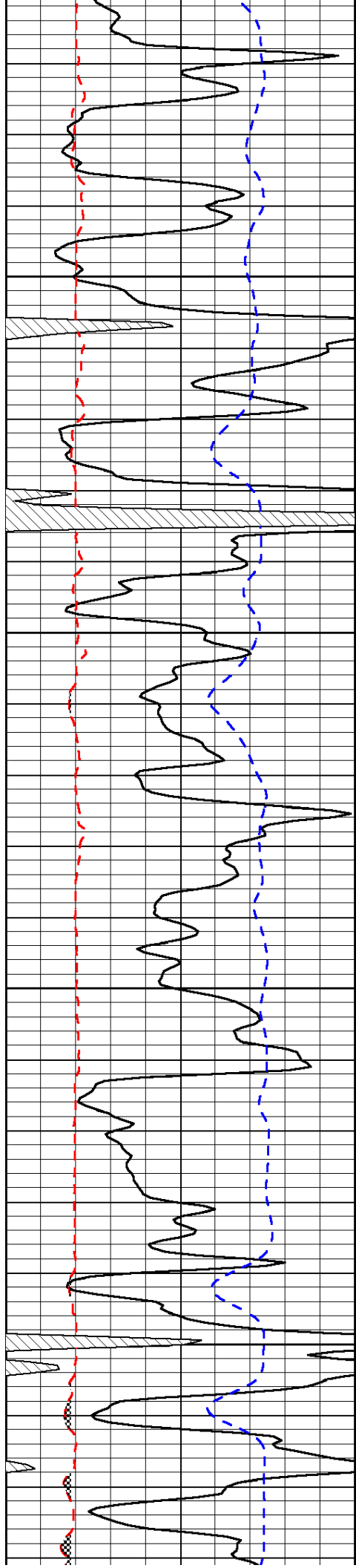
-31

-31

-31

-30

-31

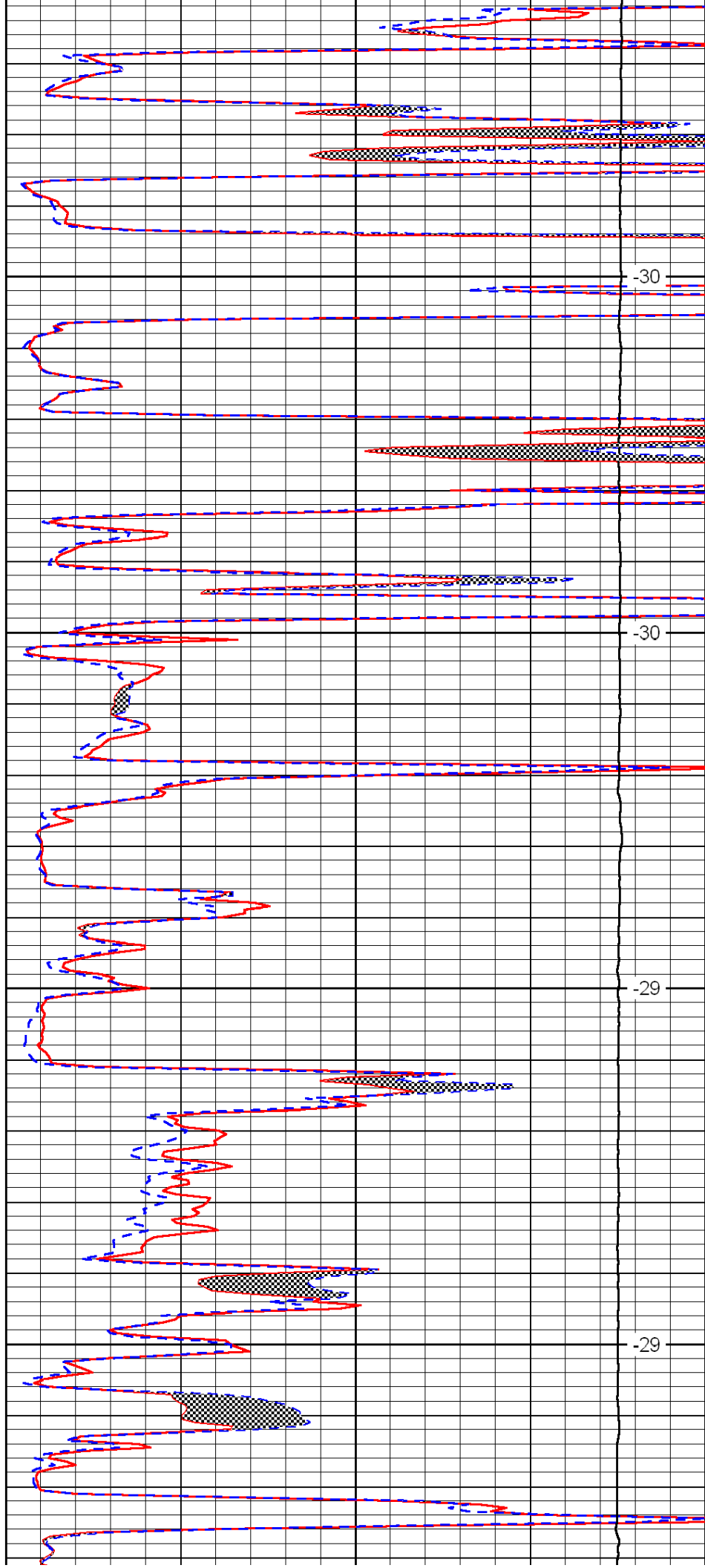


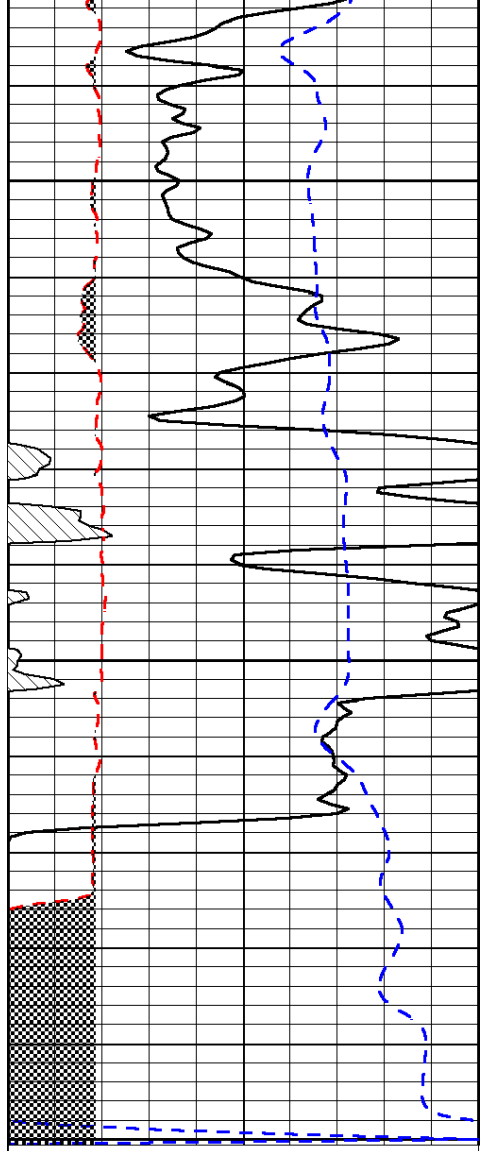
3450

3500

3550

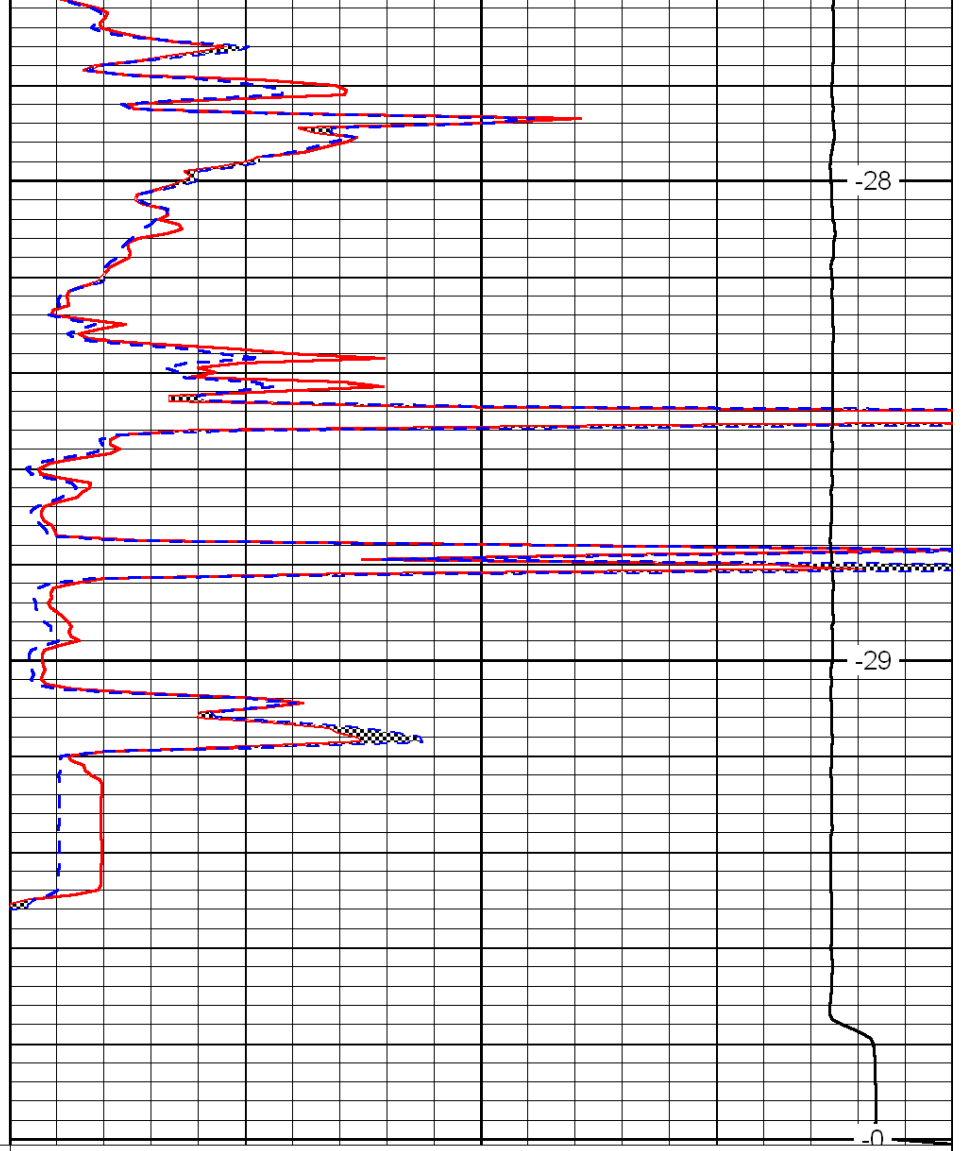
3600





0	Gamma Ray	150
6	Micro Log Caliper (GAPI)	16
-200	SP (mV)	0

3650
3700
3750



0	Micro Inverse 1 X 1	40
0	Micro Normal 2''	40
15000	Line Weight	0

-28
-29
-0

LSPD