



DIGITAL LOG (785) 625-3858

Dual Induction Log

15-147-20,653-00-00

API No.	Company	Bach Oil Production
	Well	Knape No. 1
	Field	Wildcat
	County	Phillips
	State	Kansas
Location	2570' FSL & 1420' FEL	
Sec: 18	Twp: 1 S	Rge: 18 W
Permanent Datum	Ground Level	Elevation 2065
Log Measured From	Kelly Bushing	5 Ft. Above Perm. Datum
Drilling Measured From	Kelly Bushing	
		Other Services CNL/CDL MEL/BHCS
		Elevation K.B. 2070 D.F. G.L. 2065

Date	9/22/2011
Run Number	One
Depth Driller	3737
Depth Logger	3738
Bottom Logged Interval	3737
Top Log Interval	200
Casing Driller	8.625 @ 223
Casing Logger	224
Bit Size	7.875
Type Fluid in Hole	Chemical
Salinity,ppm CL	2000
Density / Viscosity	9.1   50
pH / Fluid Loss	9.0   8.8
Source of Sample	Flowline
Rm @ Meas. Temp	1.15 @ 68
Rmf @ Meas. Temp	.86 @ 68
Rmc @ Meas. Temp	1.55 @ 68
Source of Rmf / Rmc	Charts
Rm @ BHT	.68 @ 115
Operating Rig Time	5 Hours
Max Rec. Temp. F	115
Equipment Number	91
Location	Hays
Recorded By	D.Kerr
Witnessed By	Bob Peterson

<<< Fold Here >>>

All interpretations are opinions based on inferences from electrical or other measurements and we cannot and do not guarantee the accuracy or correctness of any interpretation, and we shall not, except in the case of gross or willful negligence on our part, be liable or responsible for any loss, costs, damages, or expenses incurred or sustained by anyone resulting from any interpretation made by any of our officers, agents or employees. These interpretations are also subject to our general terms and conditions set out in our current Price Schedule.

Comments

Thank you for using Log-Tech, Inc.  
 (785) 625-3858  
 Phillipsburg KS, North to 383 HWY,  
 West to 300th RD, 2 1/2 South (Arcoss Wooden Bridge)  
 West Into

Database File: c:\warrior\data\bach\_knape no. 1\bach\_092211hd.db  
 Dataset Pathname: DIL\bachstk  
 Presentation Format: dil2in  
 Dataset Creation: Thu Sep 22 12:21:36 2011  
 Charted by: Depth in Feet scaled 1:600

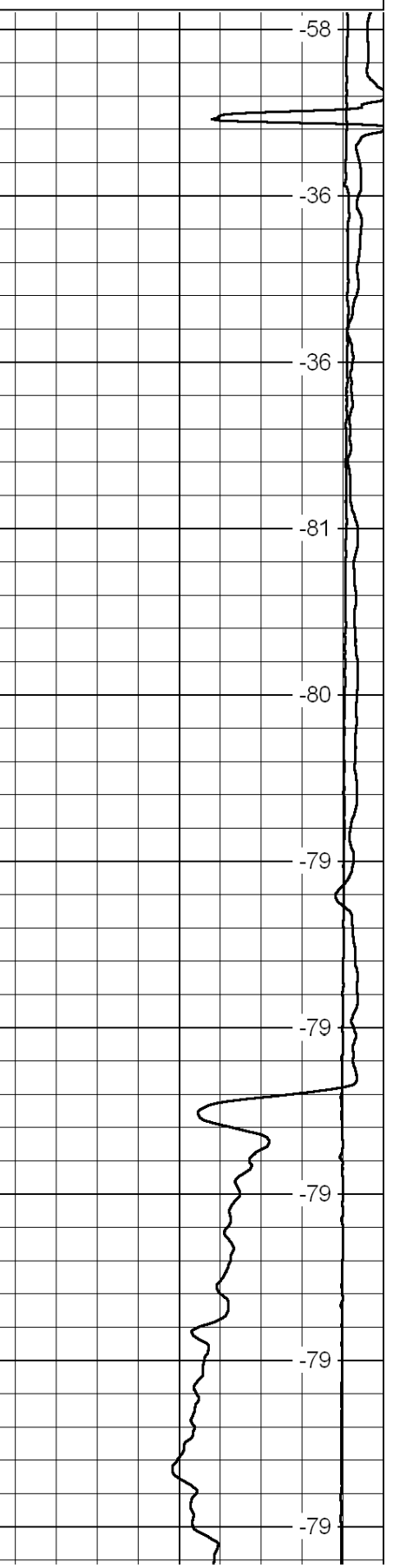
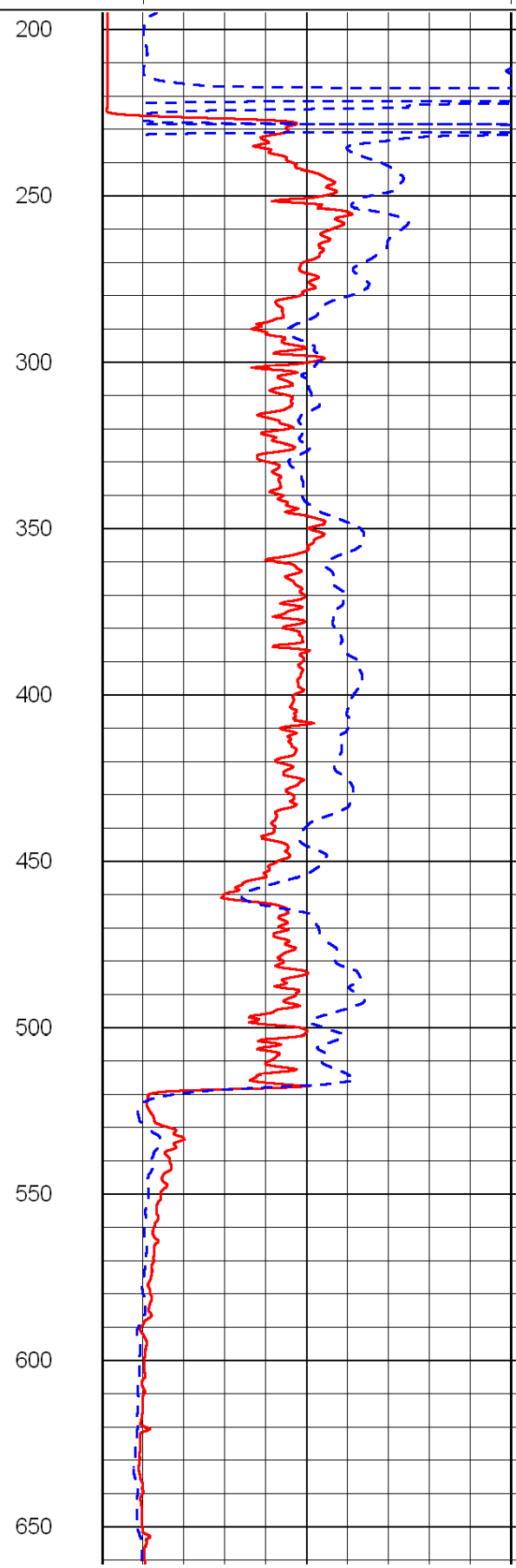
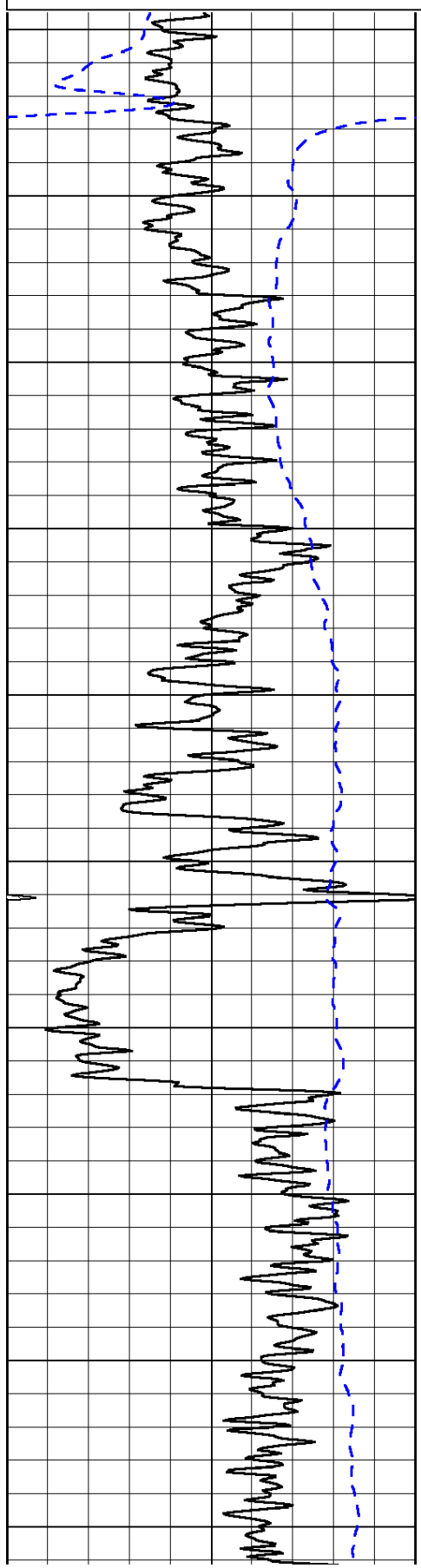
0	Gamma Ray	150
-200	SP (mV)	0

0	Shallow Resistivity	50
0	Deep Resistivity	50

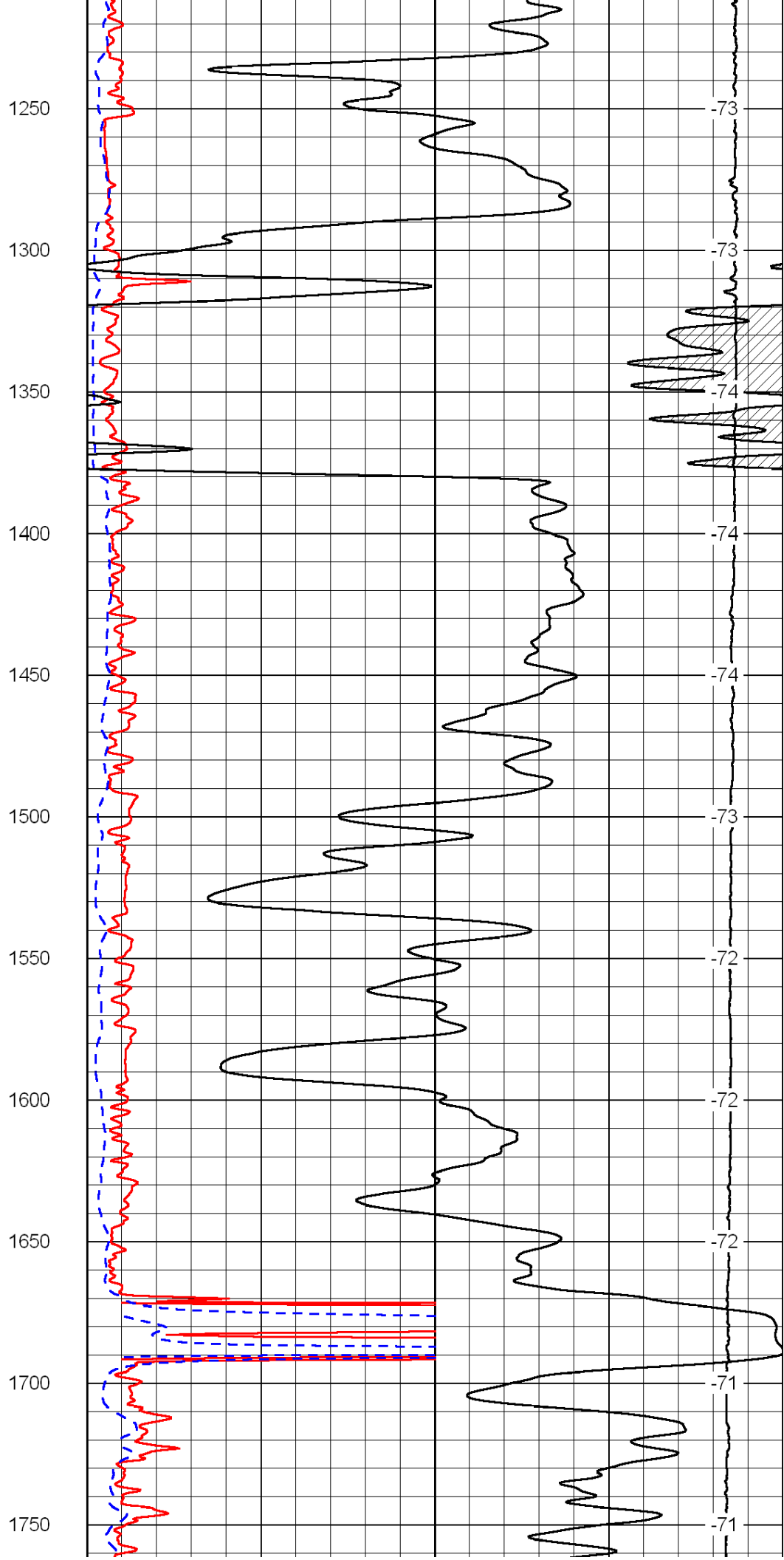
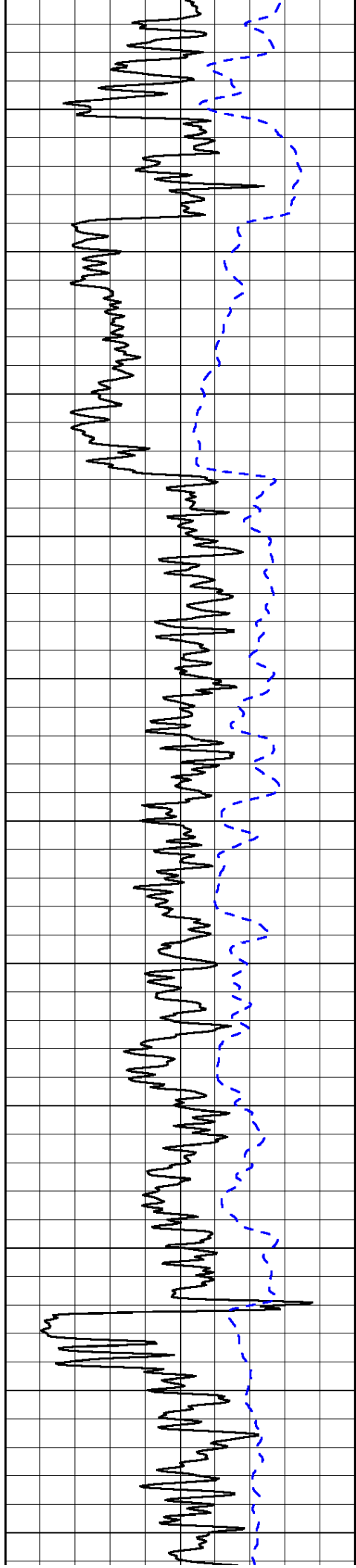
LSPD

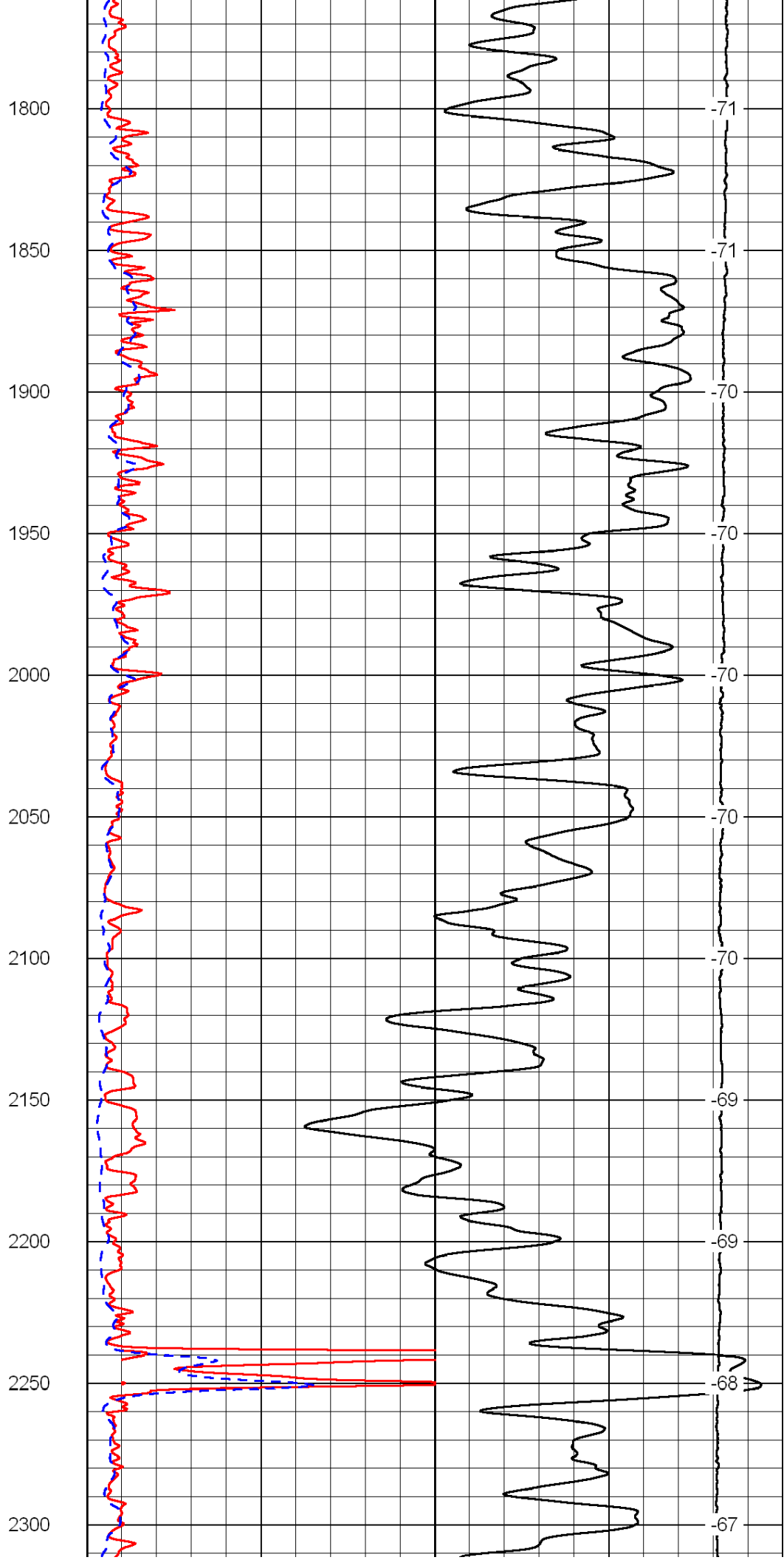
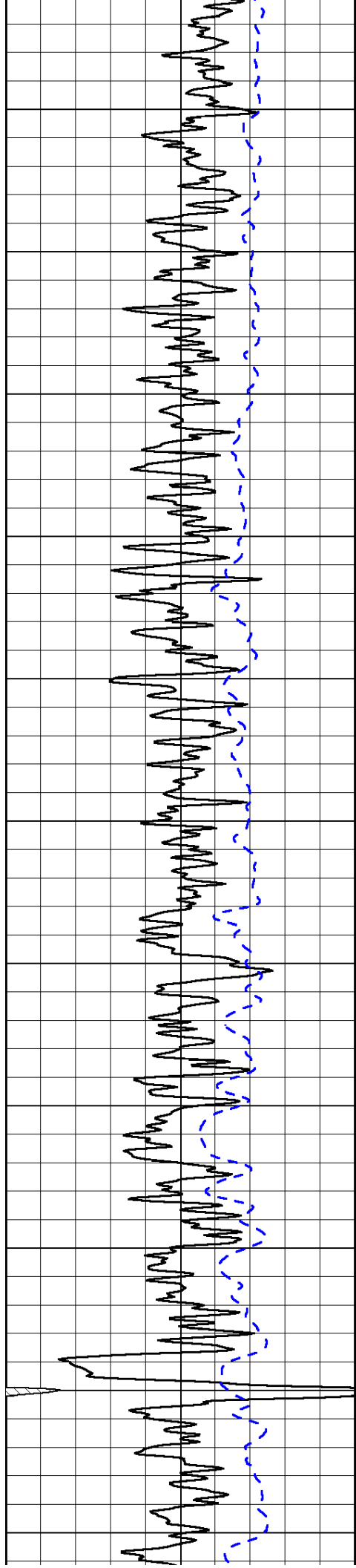
1000	Conductivity	0
15000	Line Tension	0

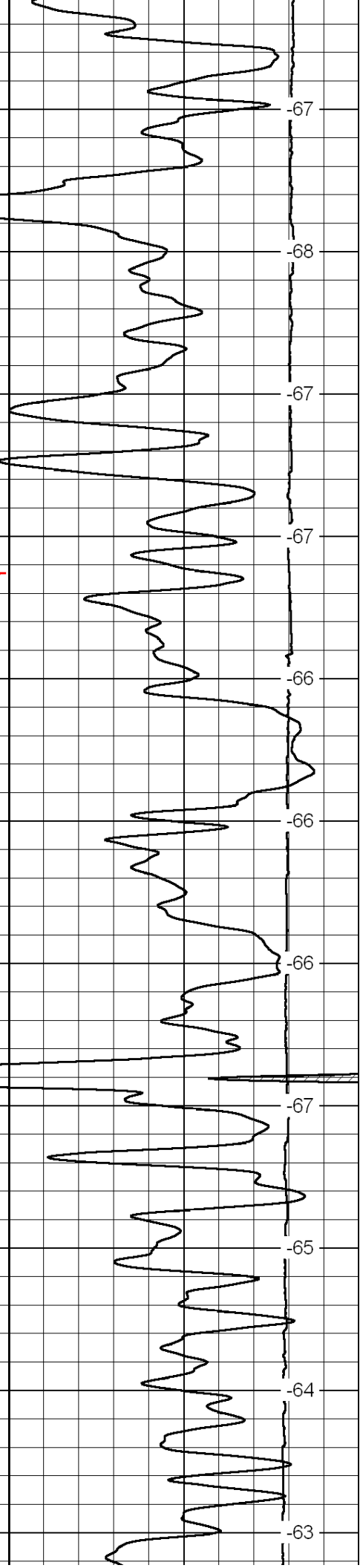
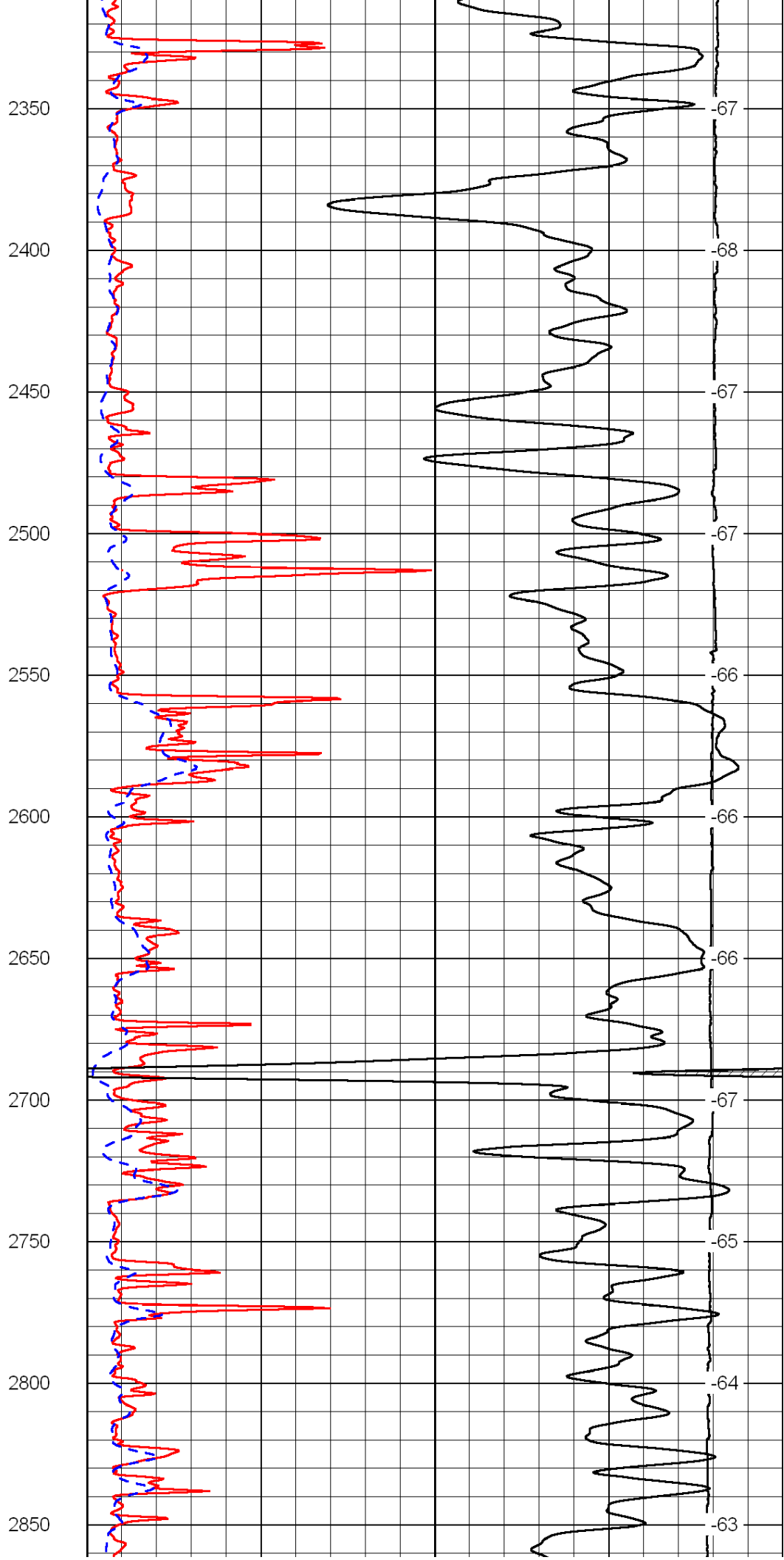
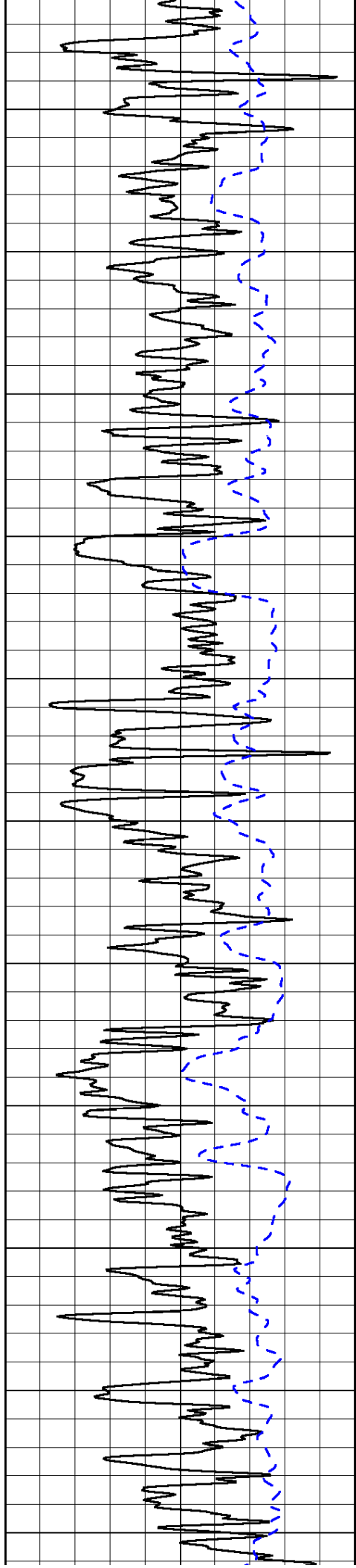
50	Shallow Resistivity	500
50	Deep Resistivity	500

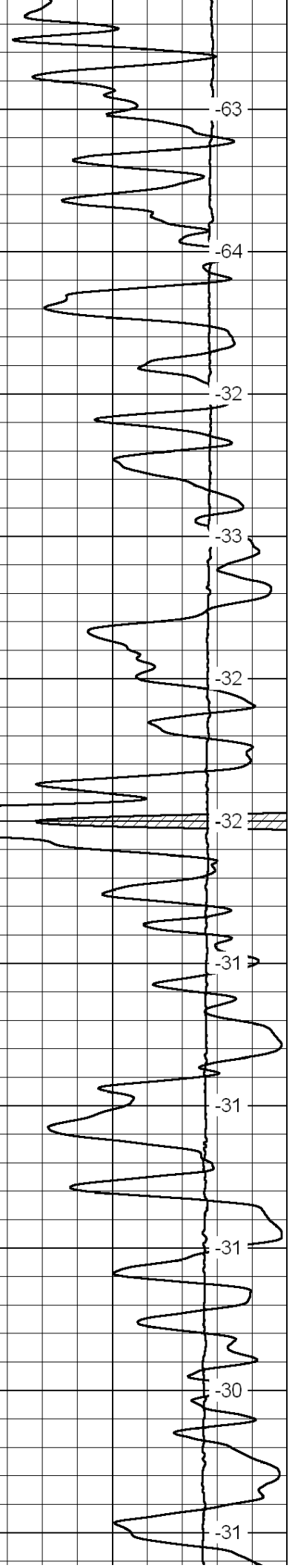
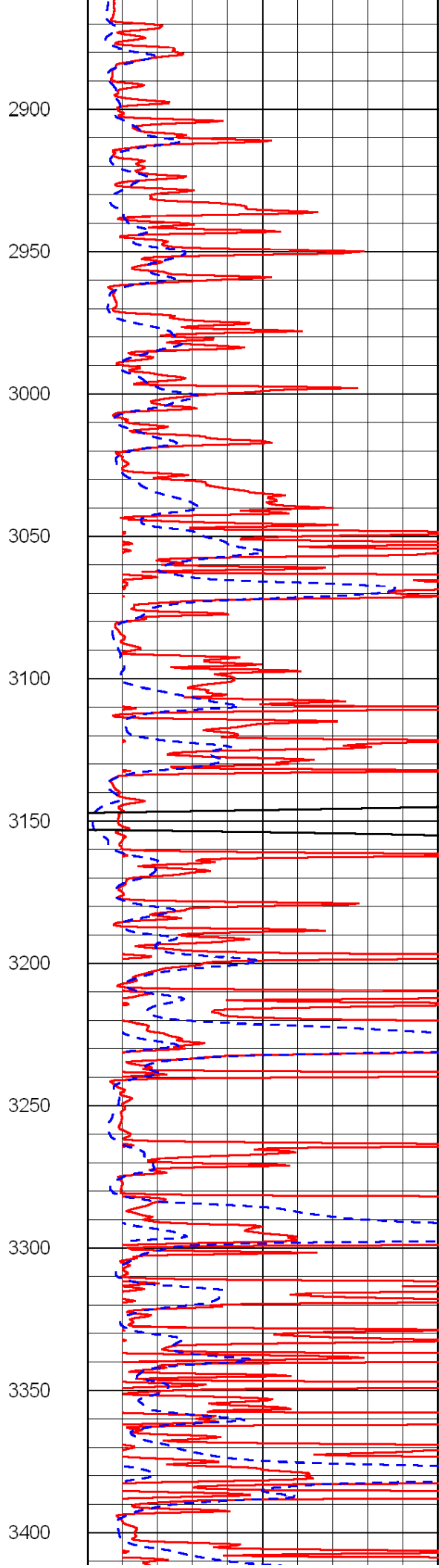
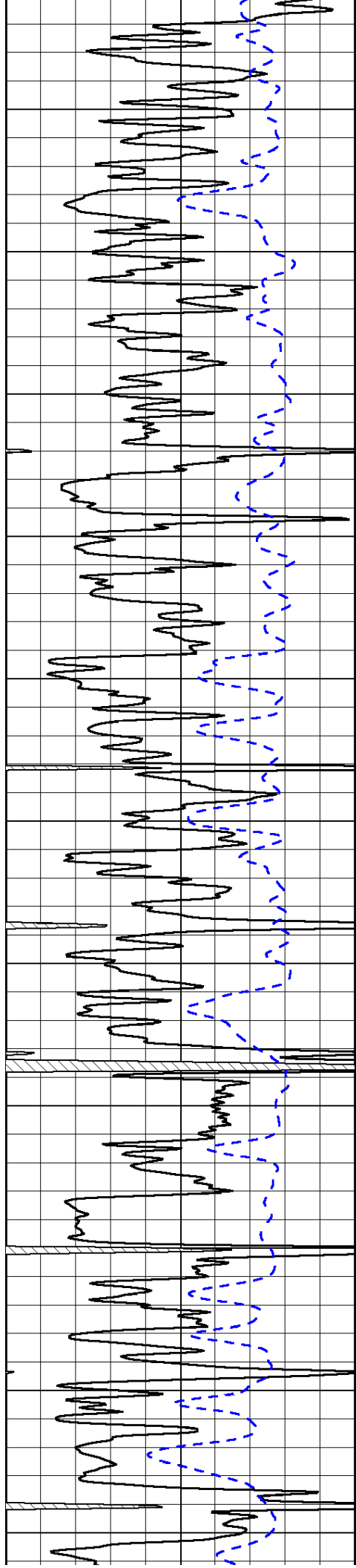


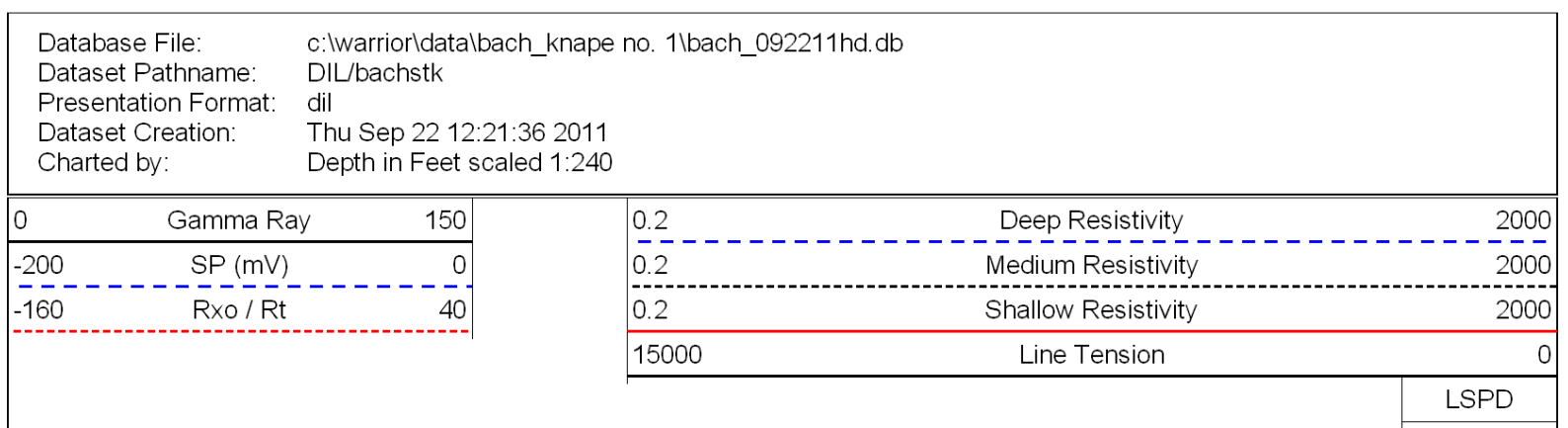
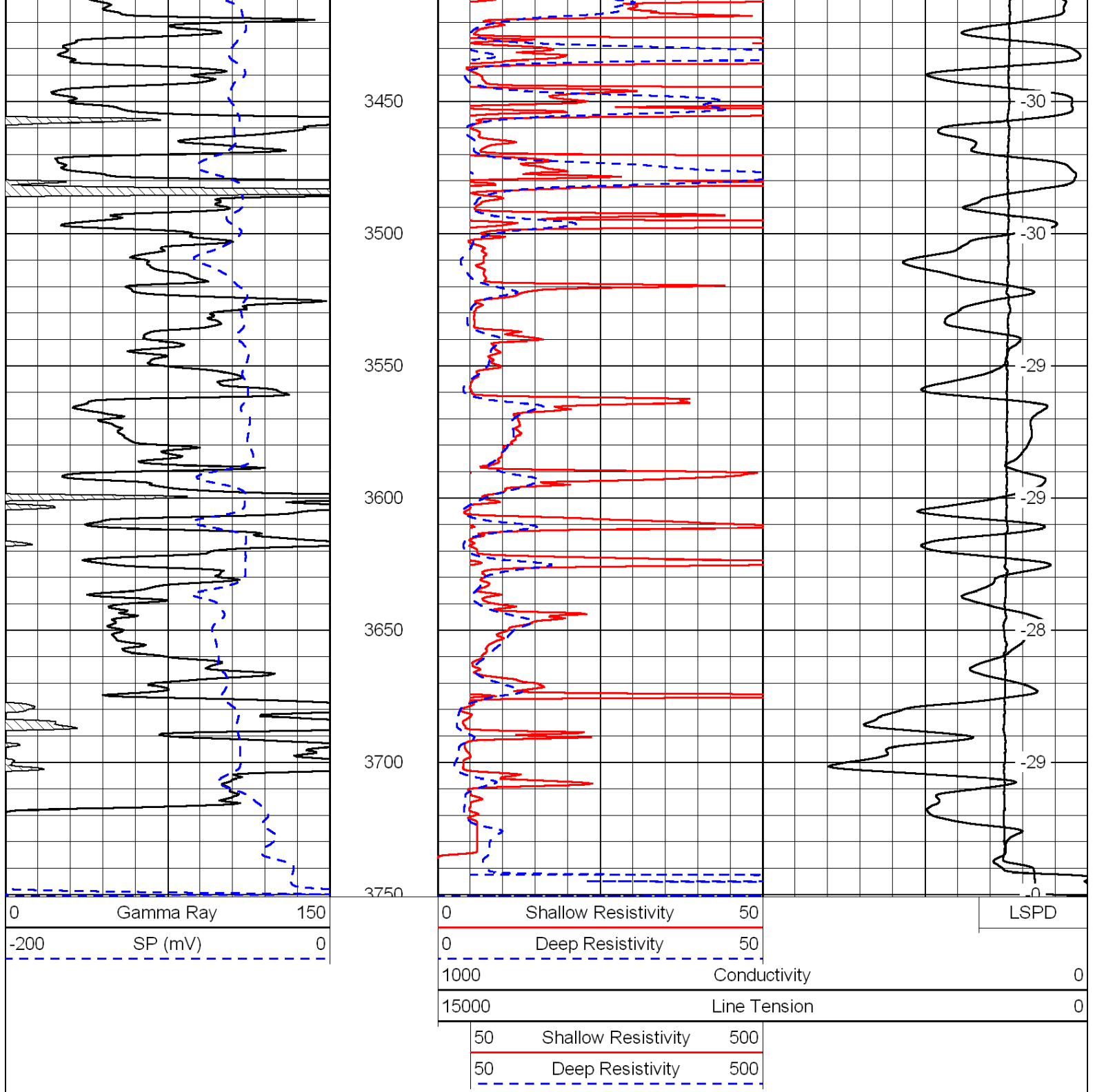


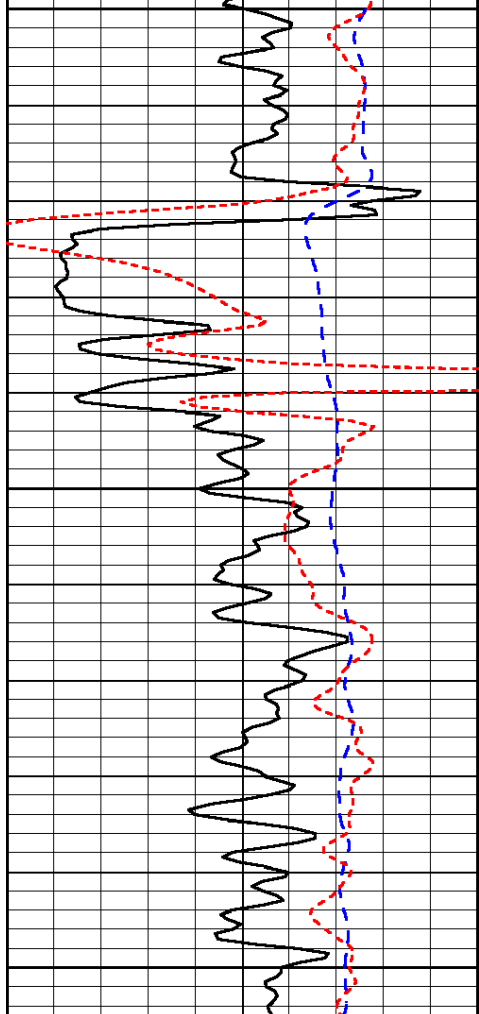




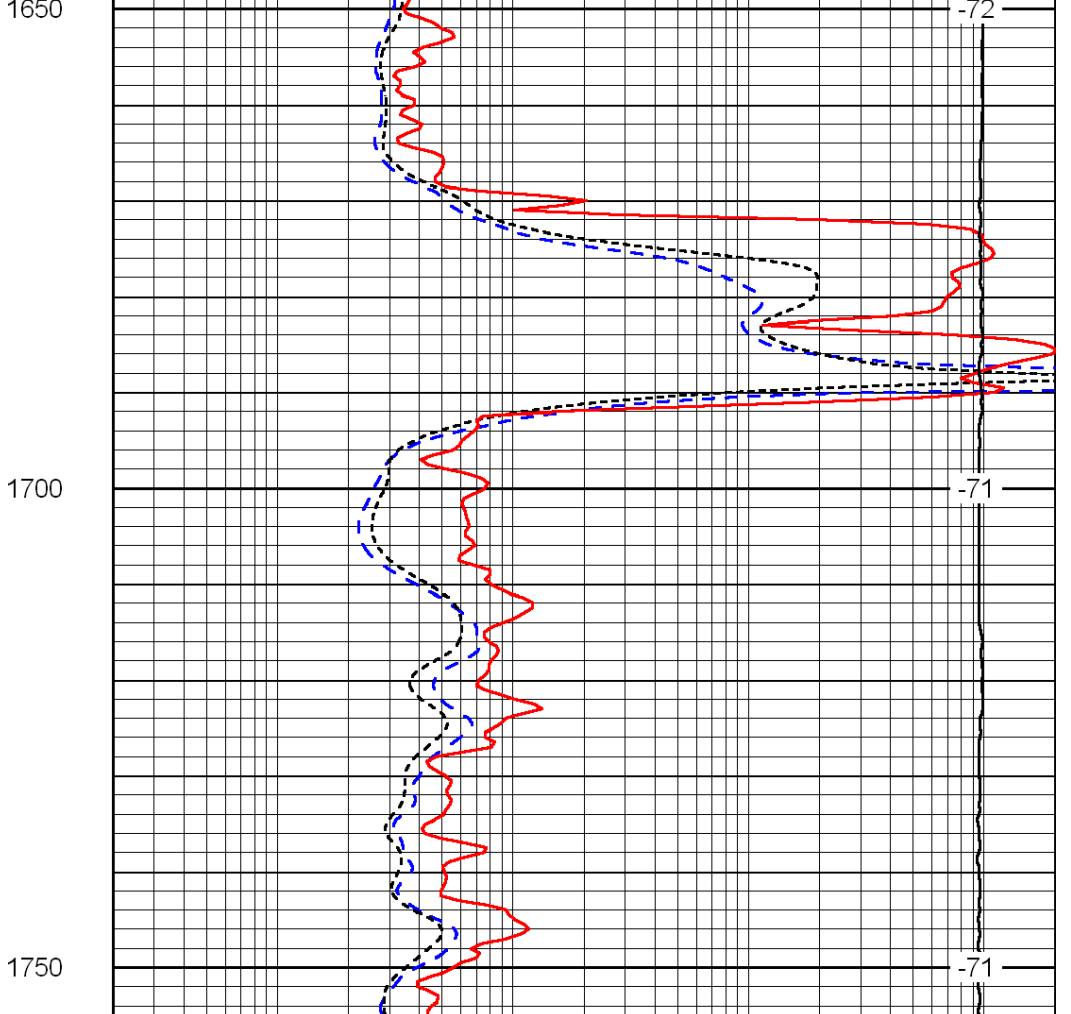








0	Gamma Ray	150
-200	SP (mV)	0
-160	Rxo / Rt	40



0.2	Deep Resistivity	2000
0.2	Medium Resistivity	2000
0.2	Shallow Resistivity	2000
15000	Line Tension	0

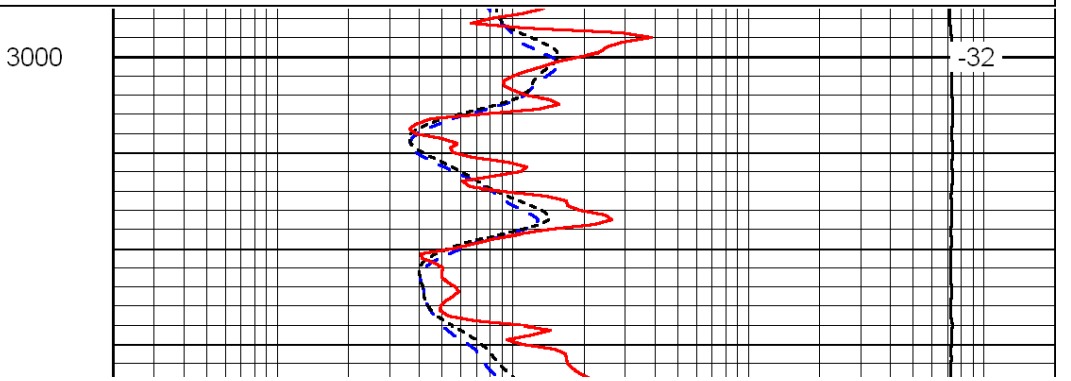
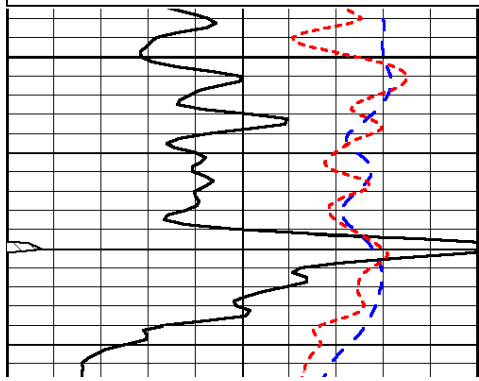
LSPD

Database File: c:\warrior\data\bach\_knape no. 1\bach\_092211hd.db  
 Dataset Pathname: DIL/bachstk  
 Presentation Format: dil  
 Dataset Creation: Thu Sep 22 12:21:36 2011  
 Charted by: Depth in Feet scaled 1:240

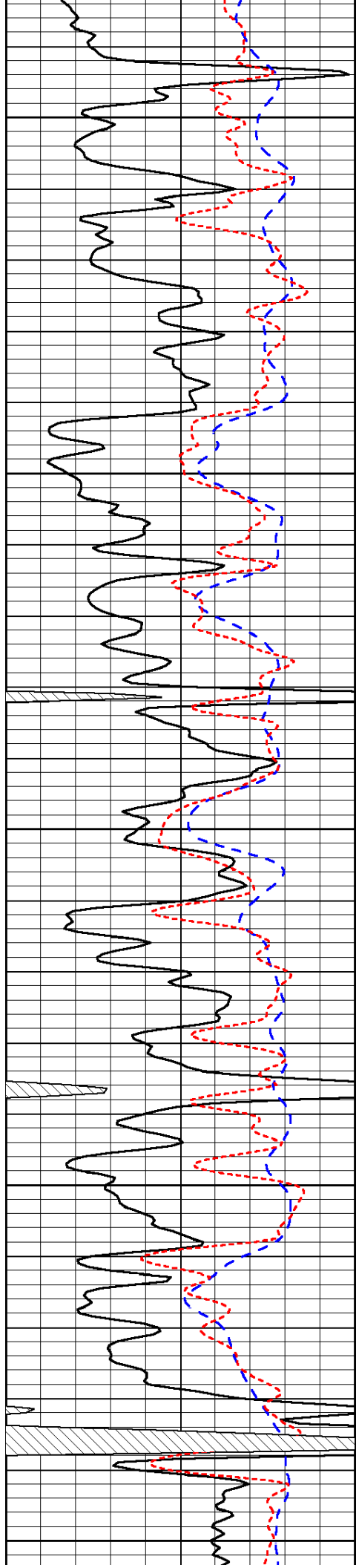
0	Gamma Ray	150
-200	SP (mV)	0
-160	Rxo / Rt	40

0.2	Deep Resistivity	2000
0.2	Medium Resistivity	2000
0.2	Shallow Resistivity	2000
15000	Line Tension	0

LSPD



-32



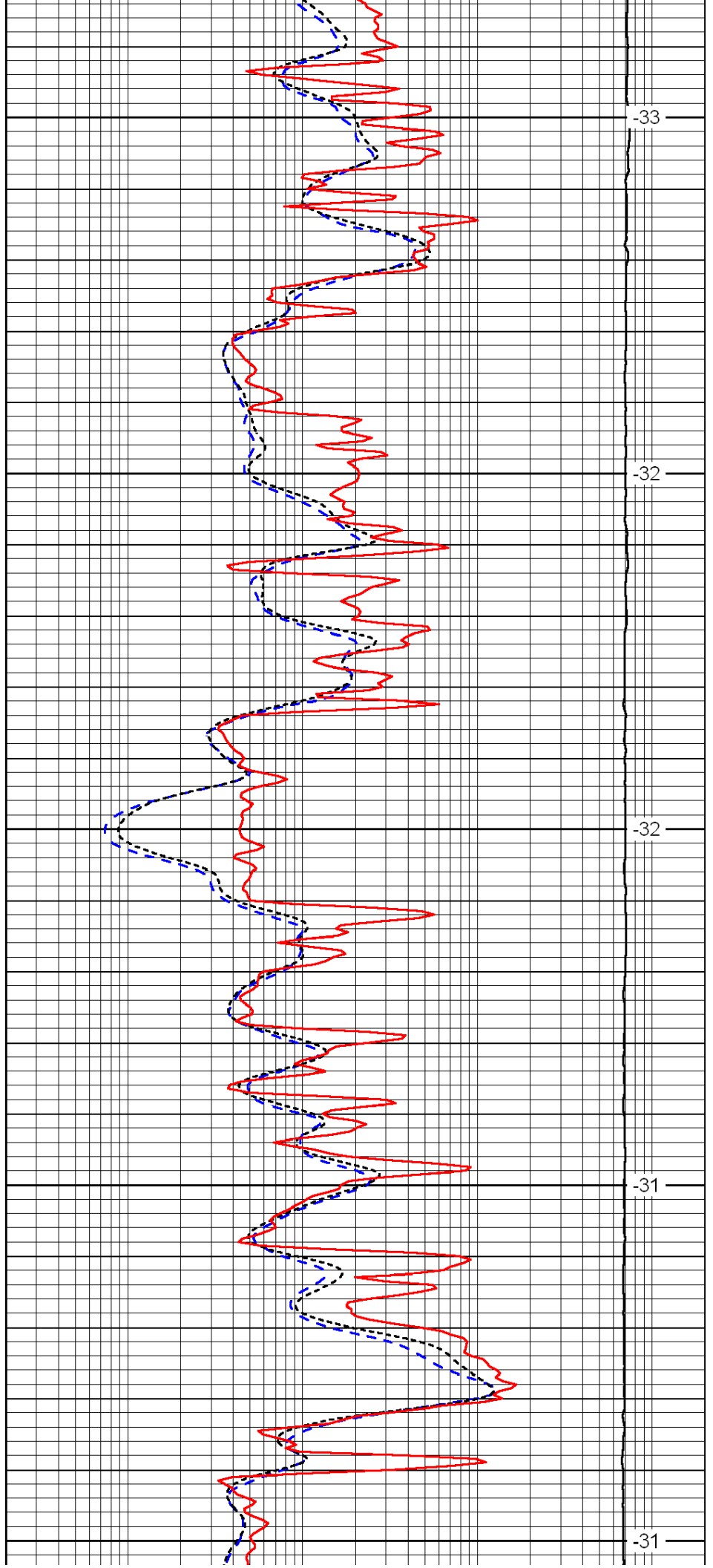
3050

3100

3150

3200

3250



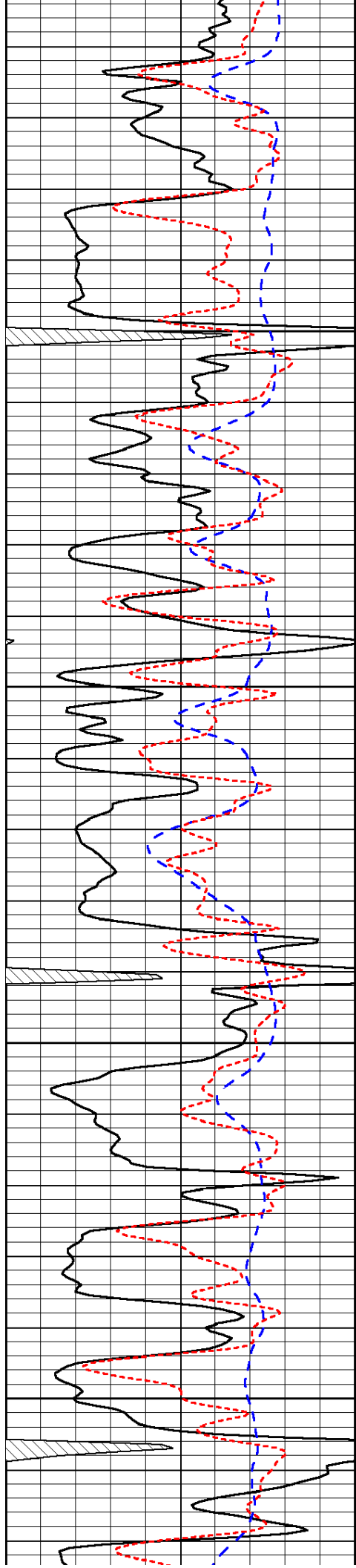
-33

-32

-32

-31

-31

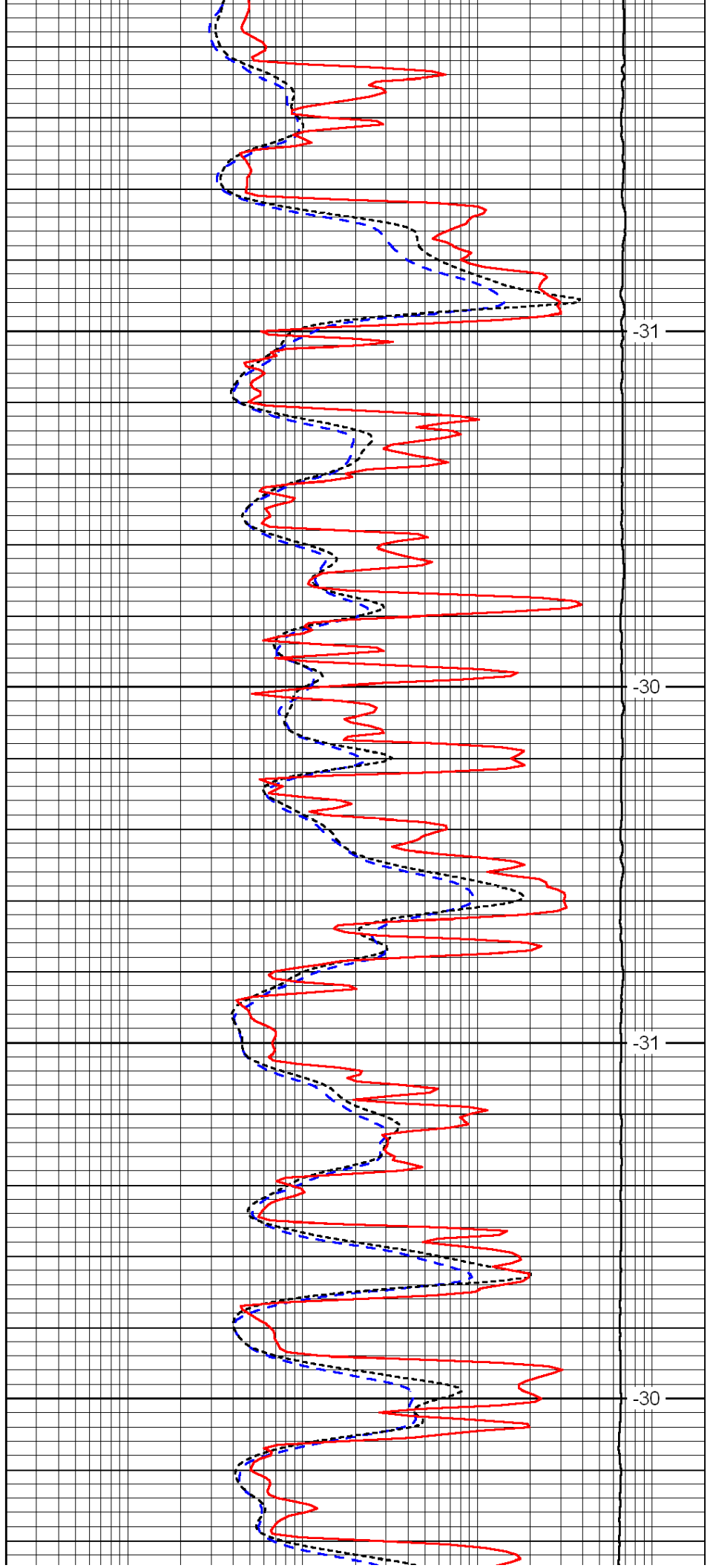


3300

3350

3400

3450

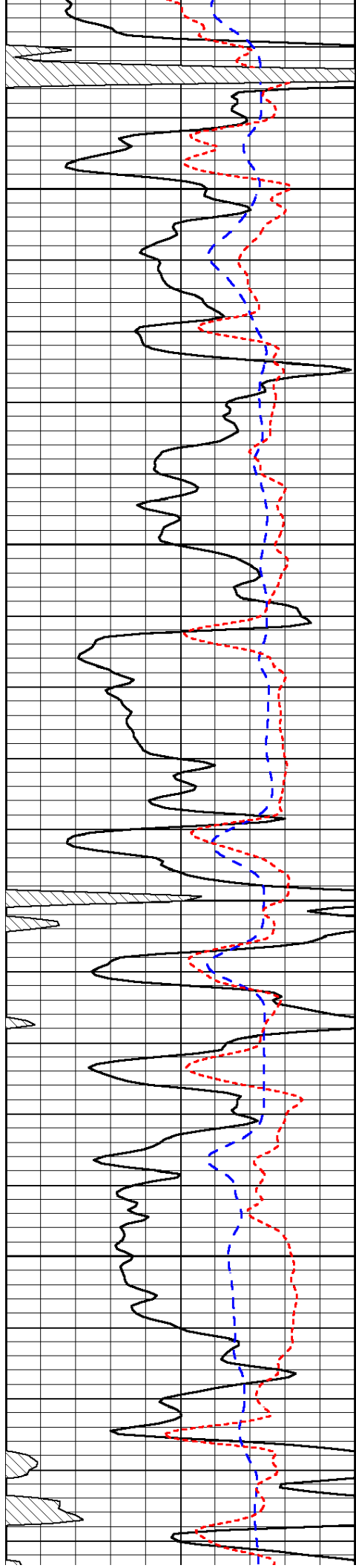


-31

-30

-31

-30

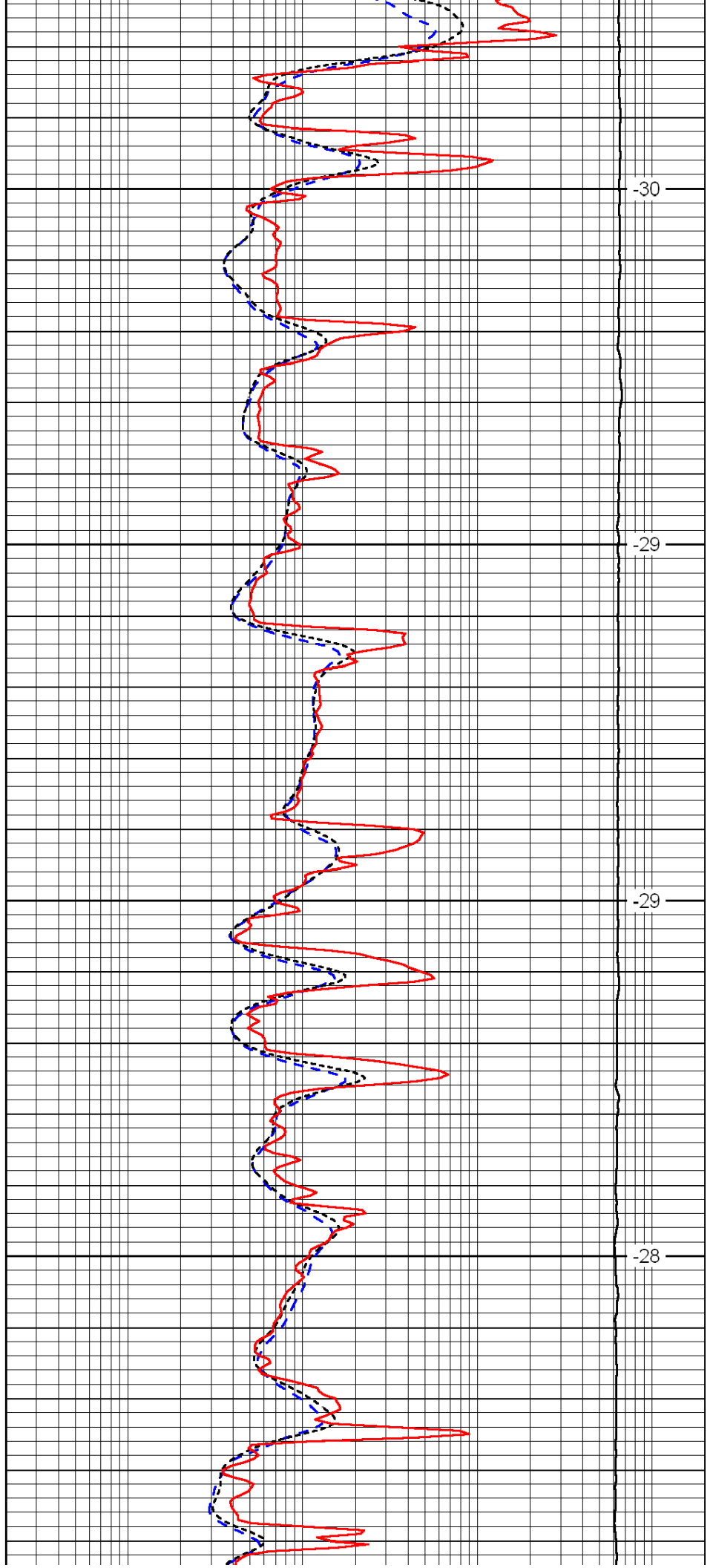


3500

3550

3600

3650

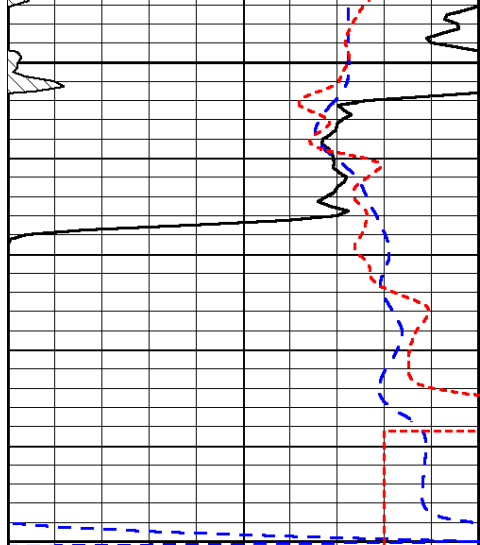


-30

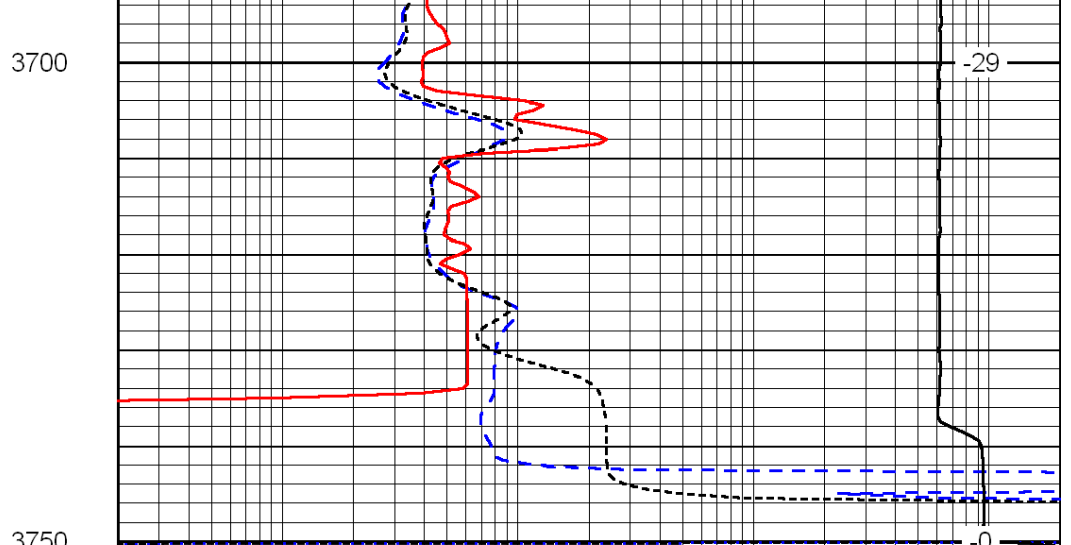
-29

-29

-28



0	Gamma Ray	150
-200	SP (mV)	0
-160	Rxo / Rt	40



0.2	Deep Resistivity	2000
0.2	Medium Resistivity	2000
0.2	Shallow Resistivity	2000
15000	Line Tension	0

LSPD