



Dual Induction Log

DIGITAL LOG

(785) 625-3858

API No.	15-135-25,108-00-00		
Company	American Warrior, Inc.		
Well	Seltman No. 6		
Field	Pabst		
County	Ness	State	Kansas
Location	2181' FSL & 2560' FWL		
Sec: 24	Twp: 18 S	Rge: 21 W	Other Services CNL/CDL
Permanent Datum	Ground Level	Elevation 2095	Elevation K.B. 2103
Log Measured From	Kelly Bushing	8 Ft. Above Perm. Datum	D.F. G.L. 2095
Drilling Measured From	Kelly Bushing		

Date	5/27/2011
Run Number	One
Depth Driller	4170
Depth Logger	4169
Bottom Logged Interval	4168
Top Log Interval	1300
Casing Driller	8.625 @ 1310
Casing Logger	1310
Bit Size	7.875
Type Fluid in Hole	Chemical
Salinity, ppm CL	7700
Density / Viscosity	9.2 48
pH / Fluid Loss	8.5 9.6
Source of Sample	Flowline
Rm @ Meas. Temp	0.60 @ 68
Rmf @ Meas. Temp	0.45 @ 68
Rmc @ Meas. Temp	0.81 @ 68
Source of Rmf / Rmc	Charts
Rm @ BHT	0.35 @ 118
Operating Rig Time	2-1/2 Hours
Max Rec. Temp. F	118
Equipment Number	15
Location	Hays
Recorded By	B. Becker
Witnessed By	Jason Alm

<<< Fold Here >>>

All interpretations are opinions based on inferences from electrical or other measurements and we cannot and do not guarantee the accuracy or correctness of any interpretation, and we shall not, except in the case of gross or willful negligence on our part, be liable or responsible for any loss, costs, damages, or expenses incurred or sustained by anyone resulting from any interpretation made by any of our officers, agents or employees. These interpretations are also subject to our general terms and conditions set out in our current Price Schedule.

Comments

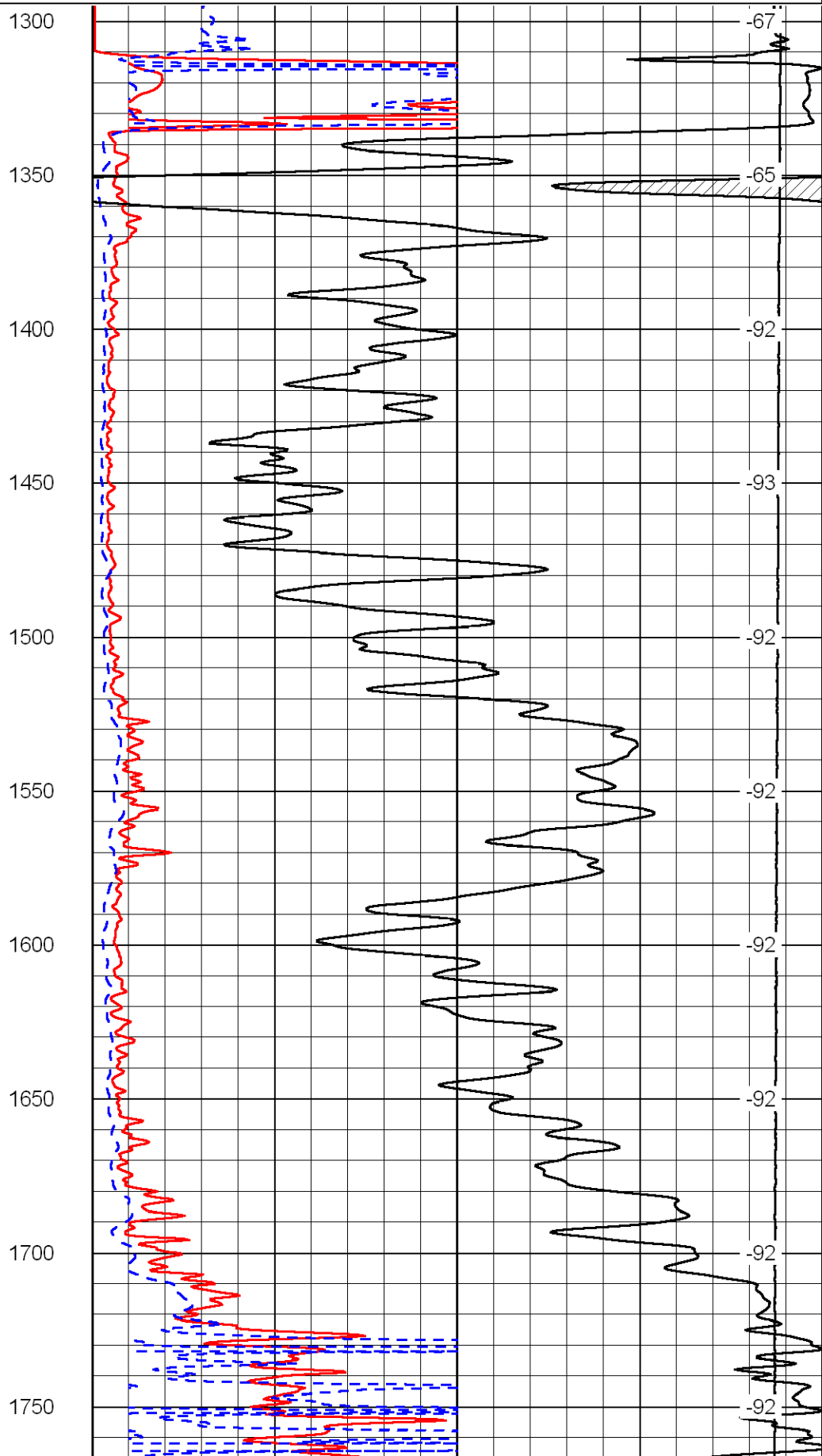
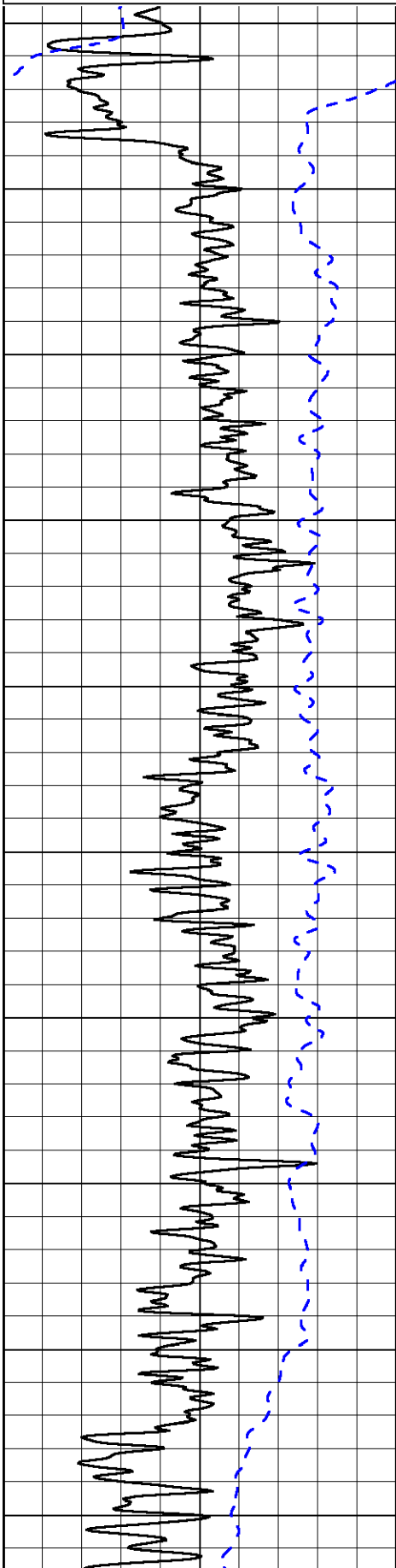
Thank you for using Log-Tech, Inc.
 (785) 625-3858
 Alexander, Ks;
 3/4 West; 1 North;
 2 West; South Into

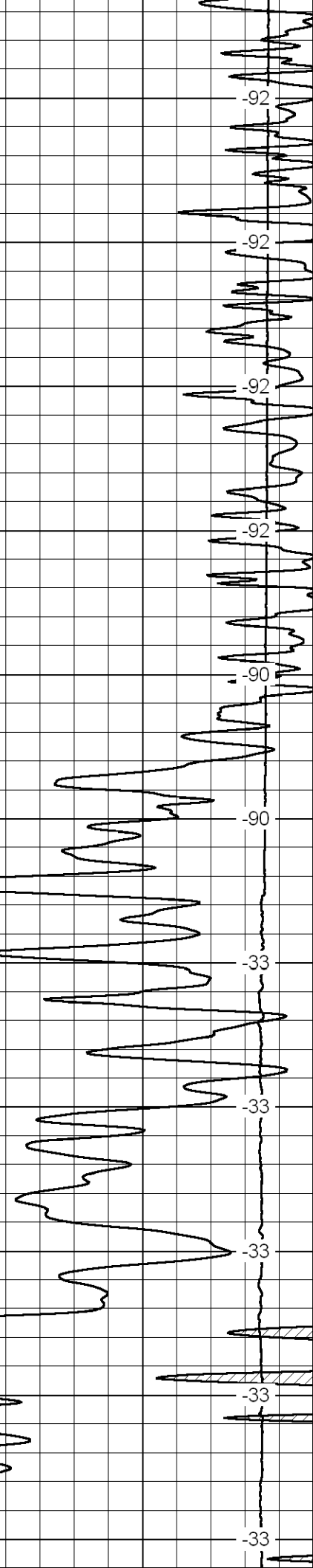
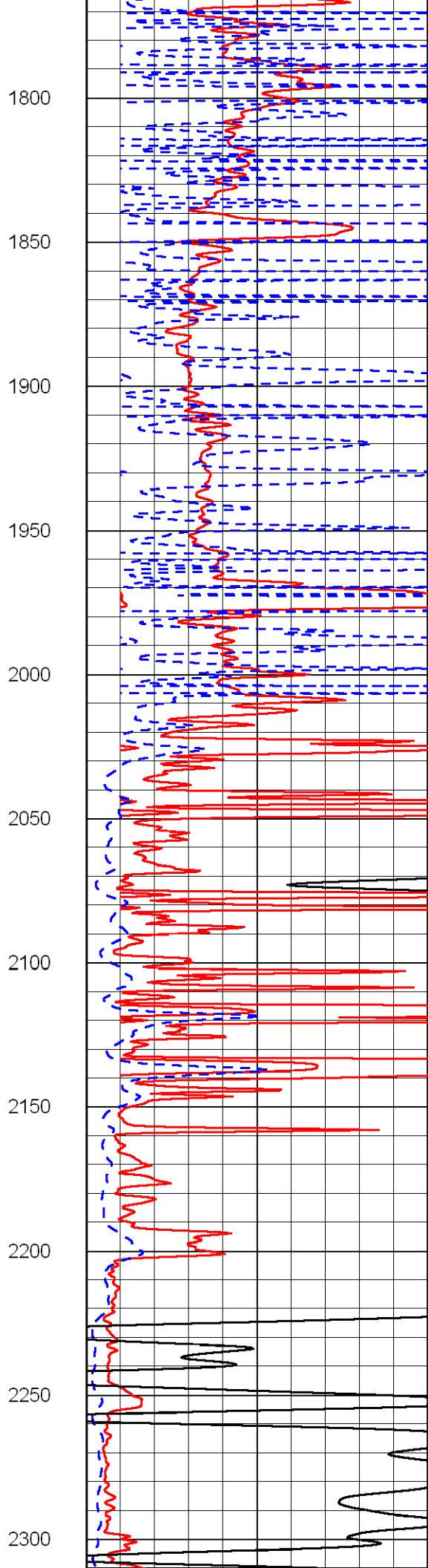
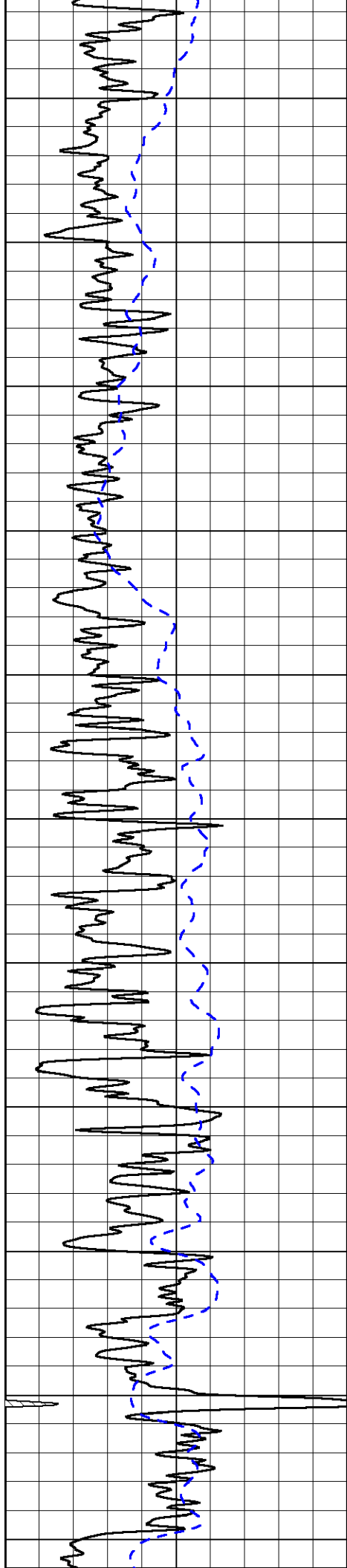
Database File: amwarhd.db
 Dataset Pathname: DIL/awstk
 Presentation Format: dil2in
 Dataset Creation: Fri May 27 22:06:07 2011
 Charted by: Depth in Feet scaled 1:600

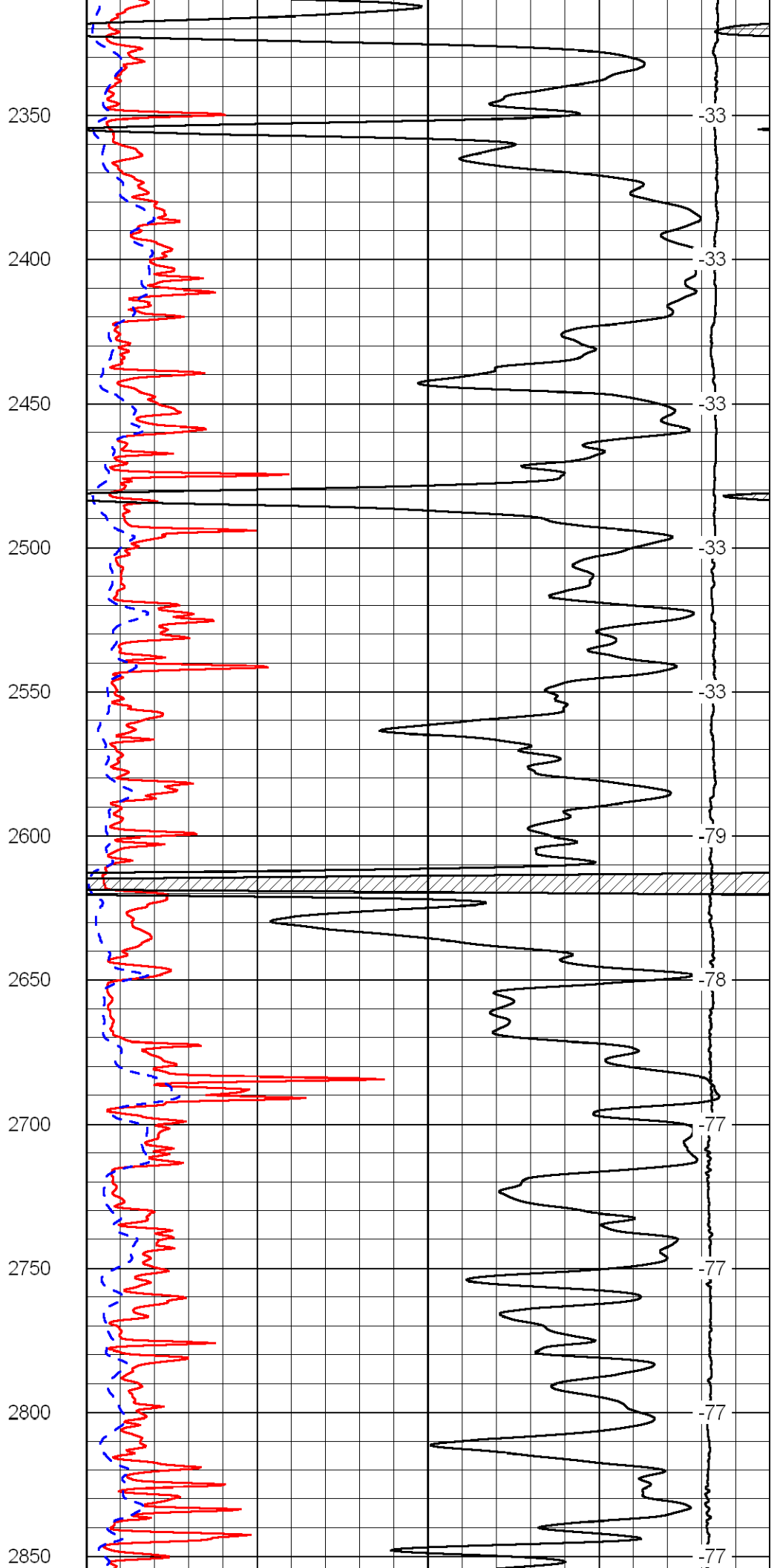
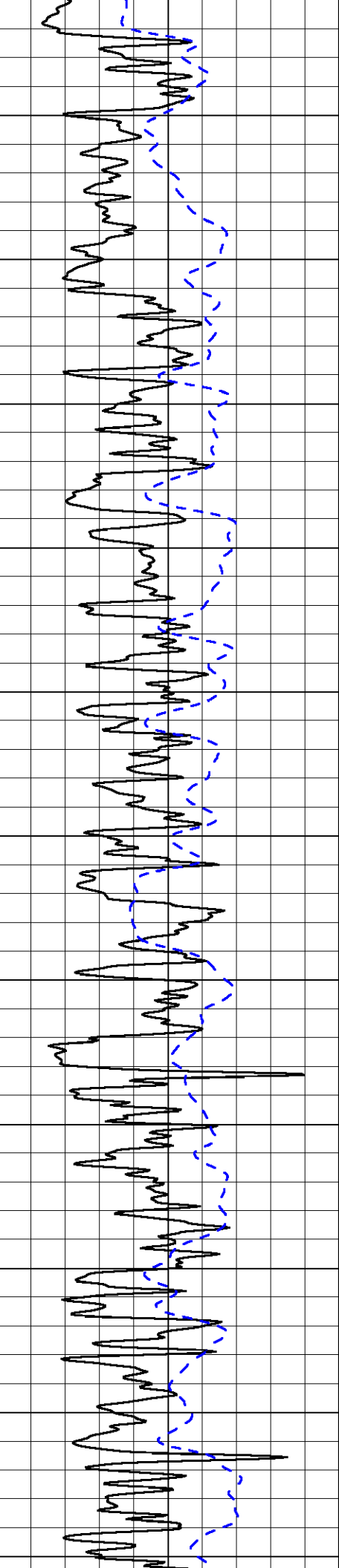
0 Gamma Ray 150
-200 SP 0

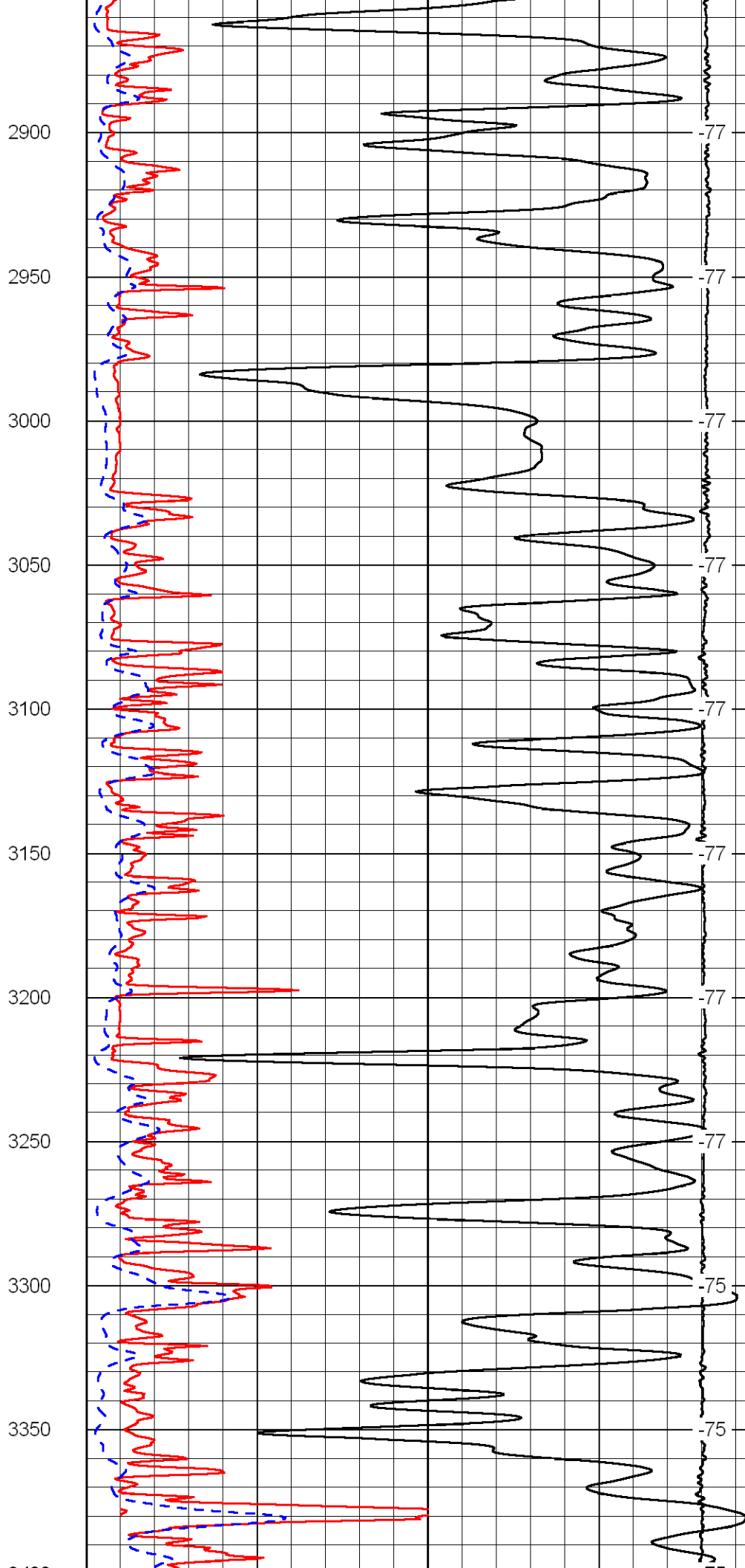
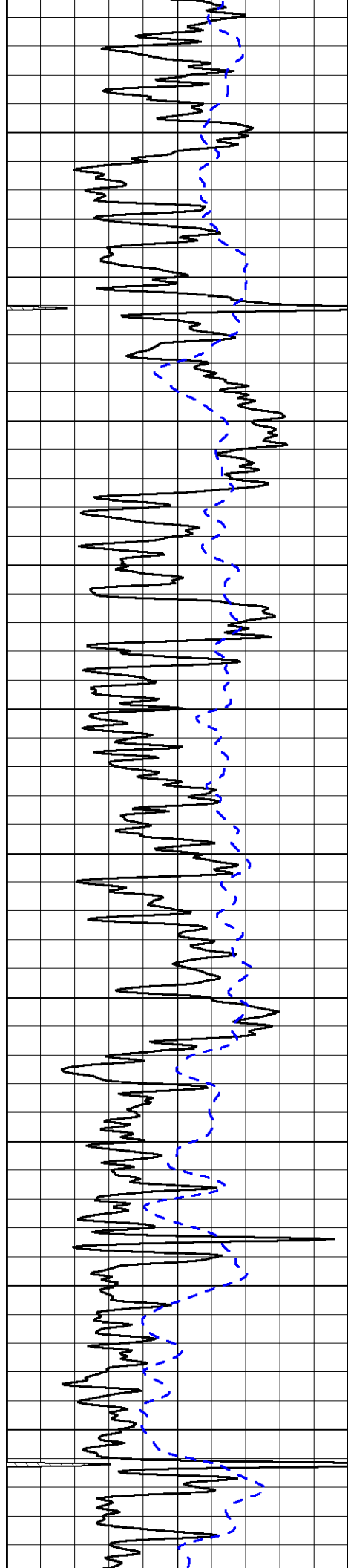
0 Shallow Resistivity 50
0 Deep Resistivity 50
1000 Conductivity 0
15000 Line Tension 0
50 Shallow Resistivity 500
50 Deep Resistivity 500

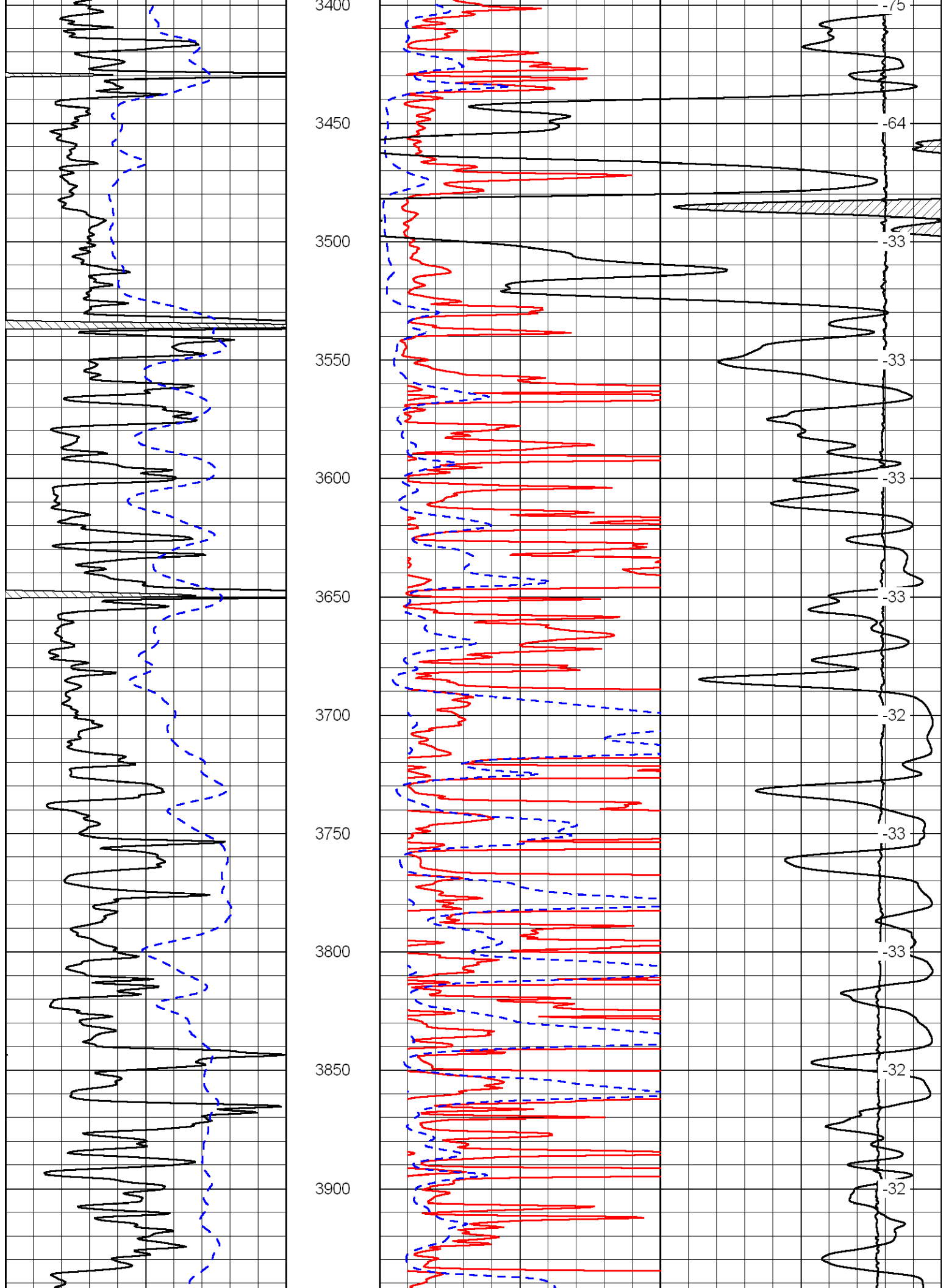
LSPD

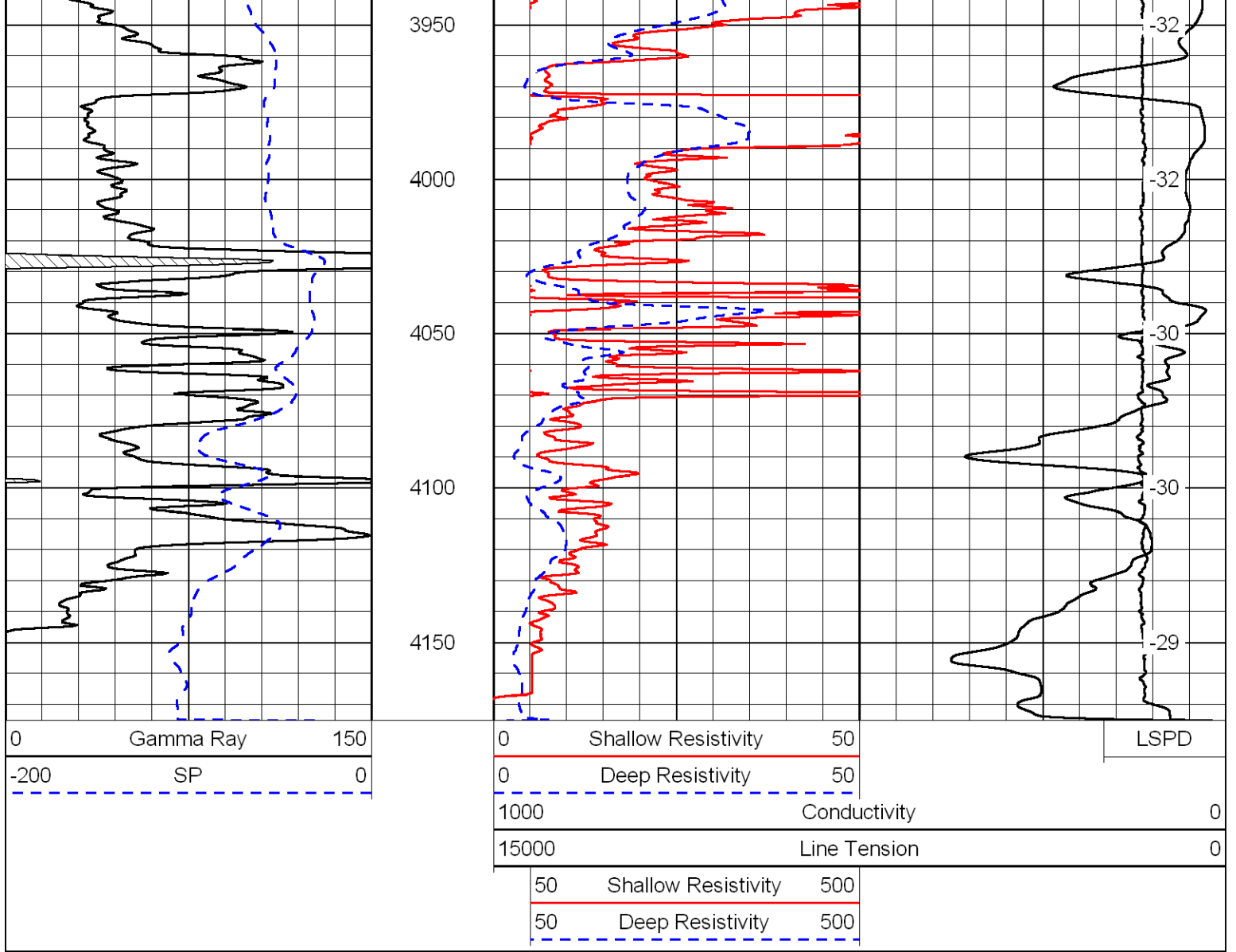




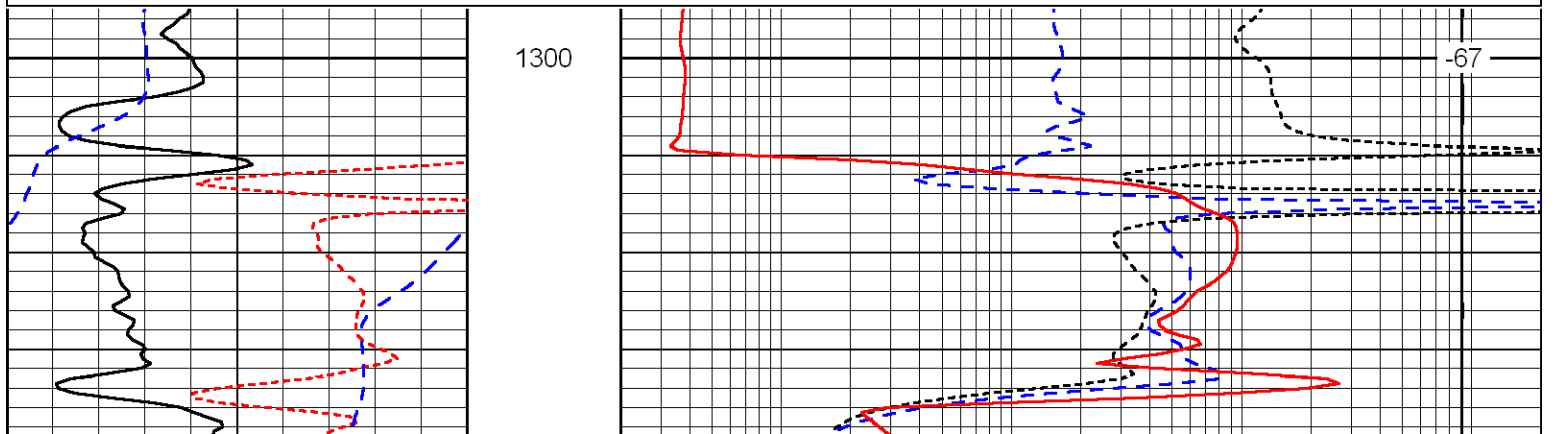
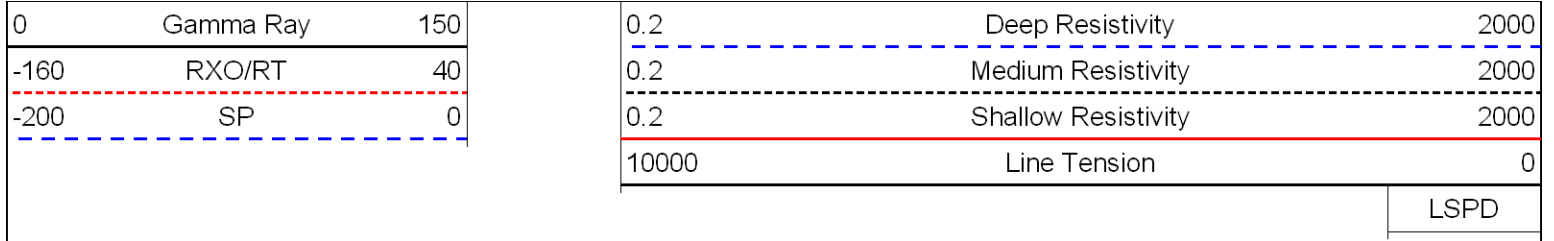


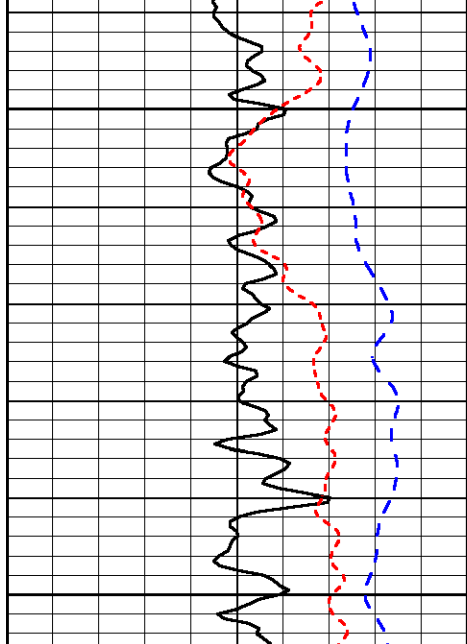






Database File: amwarhd.db
 Dataset Pathname: DIL/awstk
 Presentation Format: dil
 Dataset Creation: Fri May 27 22:06:07 2011
 Charted by: Depth in Feet scaled 1:240

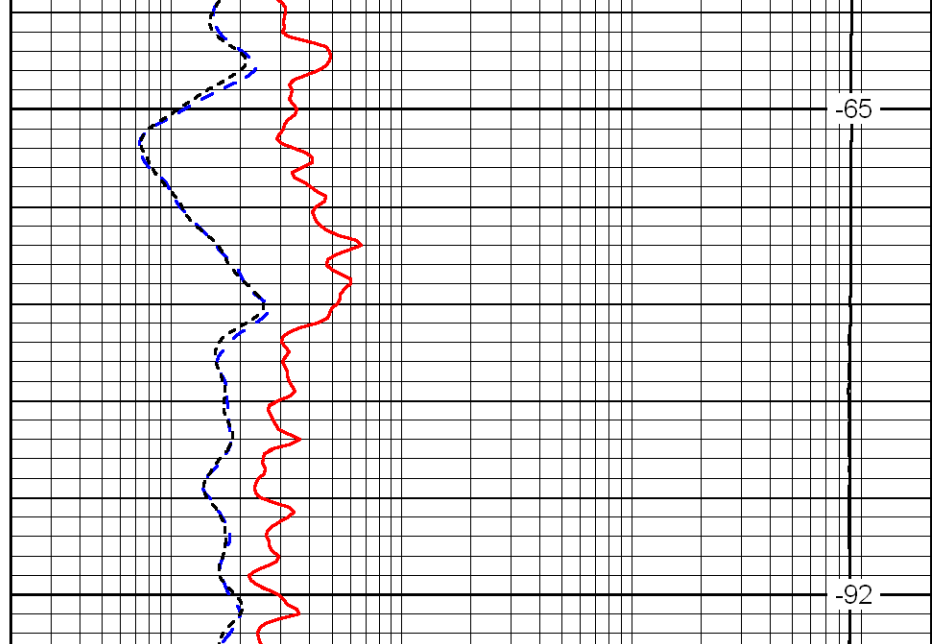




1350

1400

0	Gamma Ray	150
-160	RXO/RT	40
-200	SP	0



-65

-92

0.2	Deep Resistivity	2000
0.2	Medium Resistivity	2000
0.2	Shallow Resistivity	2000
10000	Line Tension	0

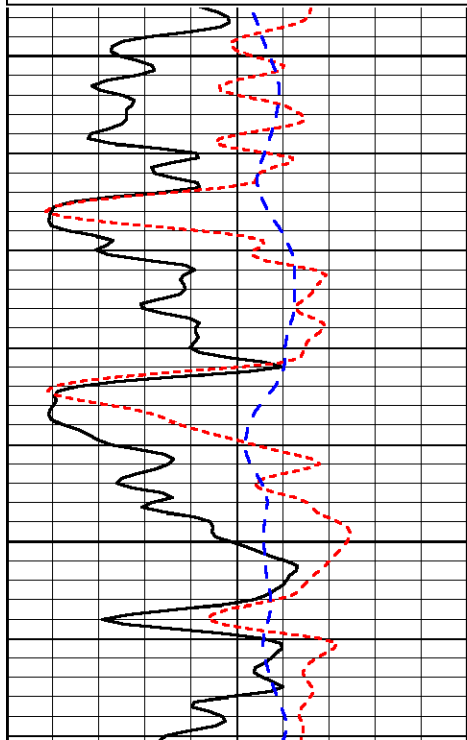
LSPD

Database File: amwarhd.db
 Dataset Pathname: DIL/awstk
 Presentation Format: dil
 Dataset Creation: Fri May 27 22:06:07 2011
 Charted by: Depth in Feet scaled 1:240

0	Gamma Ray	150
-160	RXO/RT	40
-200	SP	0

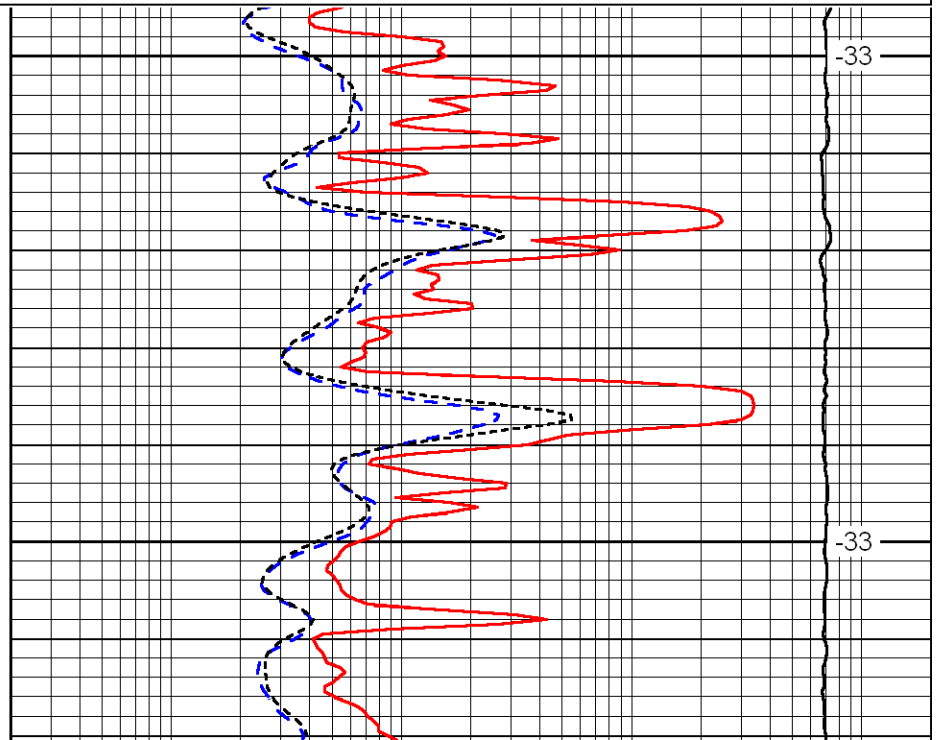
0.2	Deep Resistivity	2000
0.2	Medium Resistivity	2000
0.2	Shallow Resistivity	2000
10000	Line Tension	0

LSPD



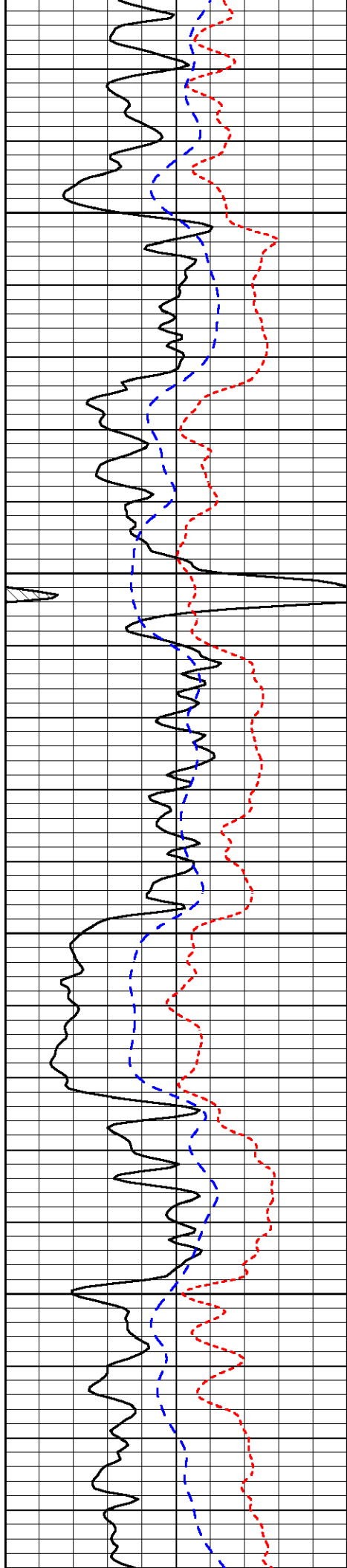
2100

2150



-33

-33

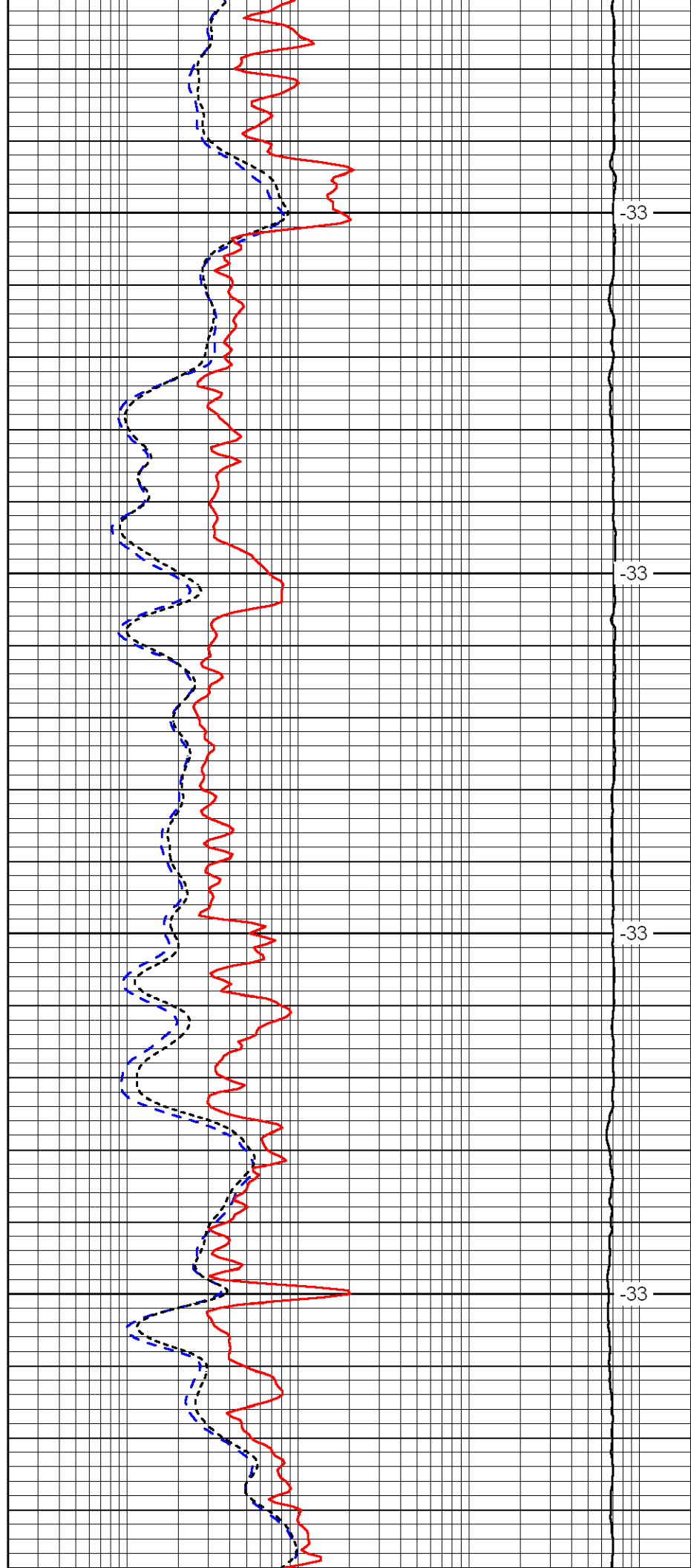


2200

2250

2300

2350

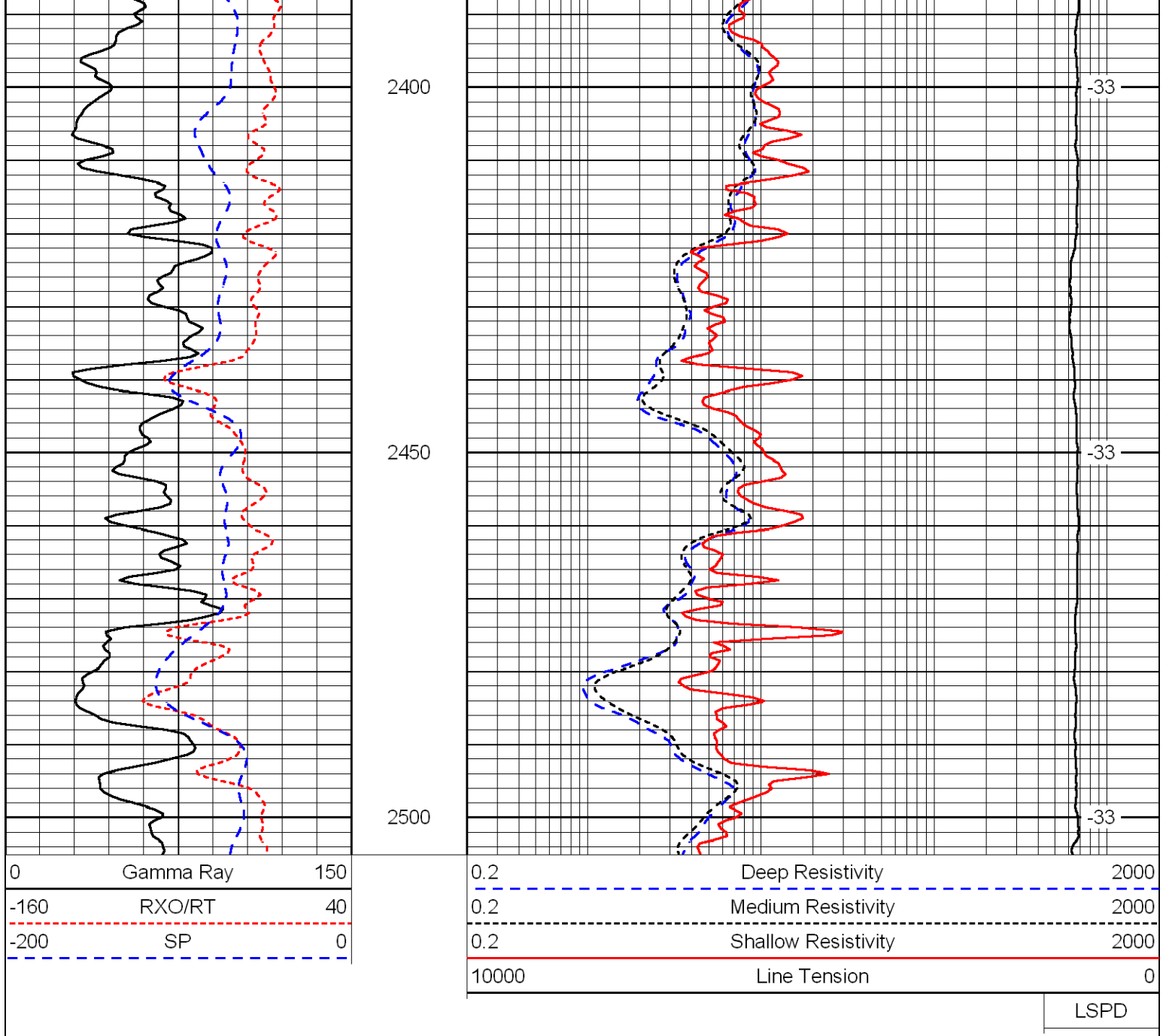


-33

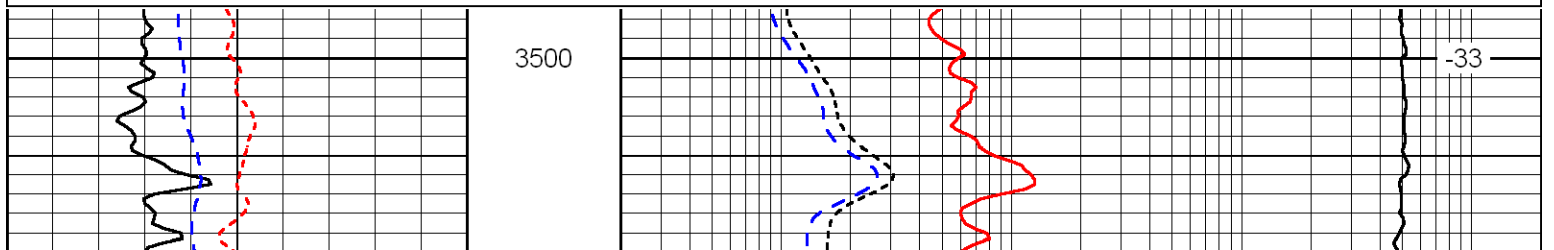
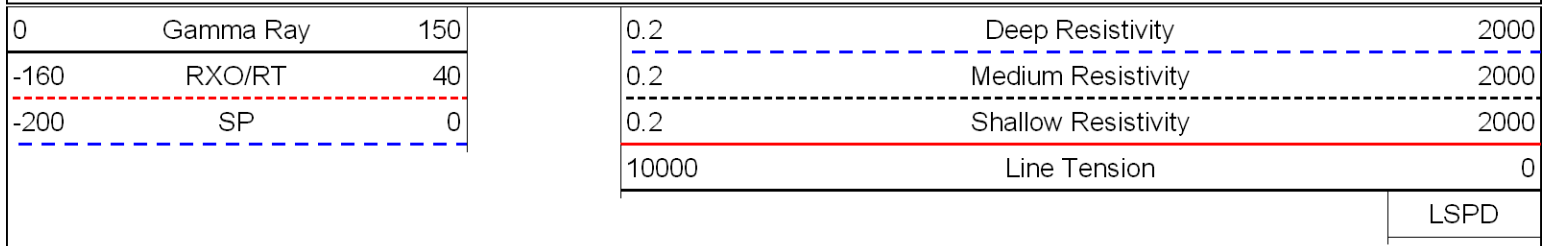
-33

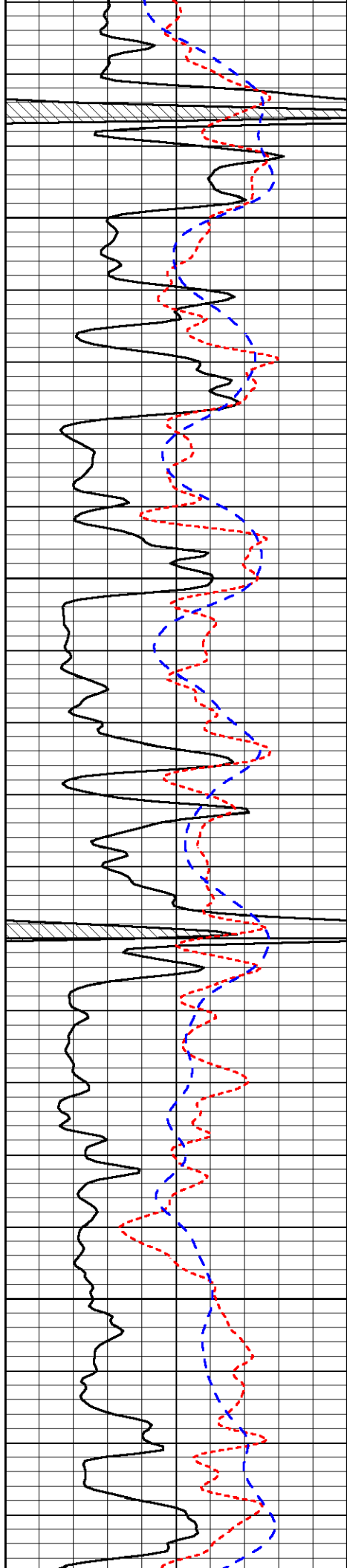
-33

-33



Database File: amwarhd.db
 Dataset Pathname: DIL/awstk
 Presentation Format: dil
 Dataset Creation: Fri May 27 22:06:07 2011
 Charted by: Depth in Feet scaled 1:240



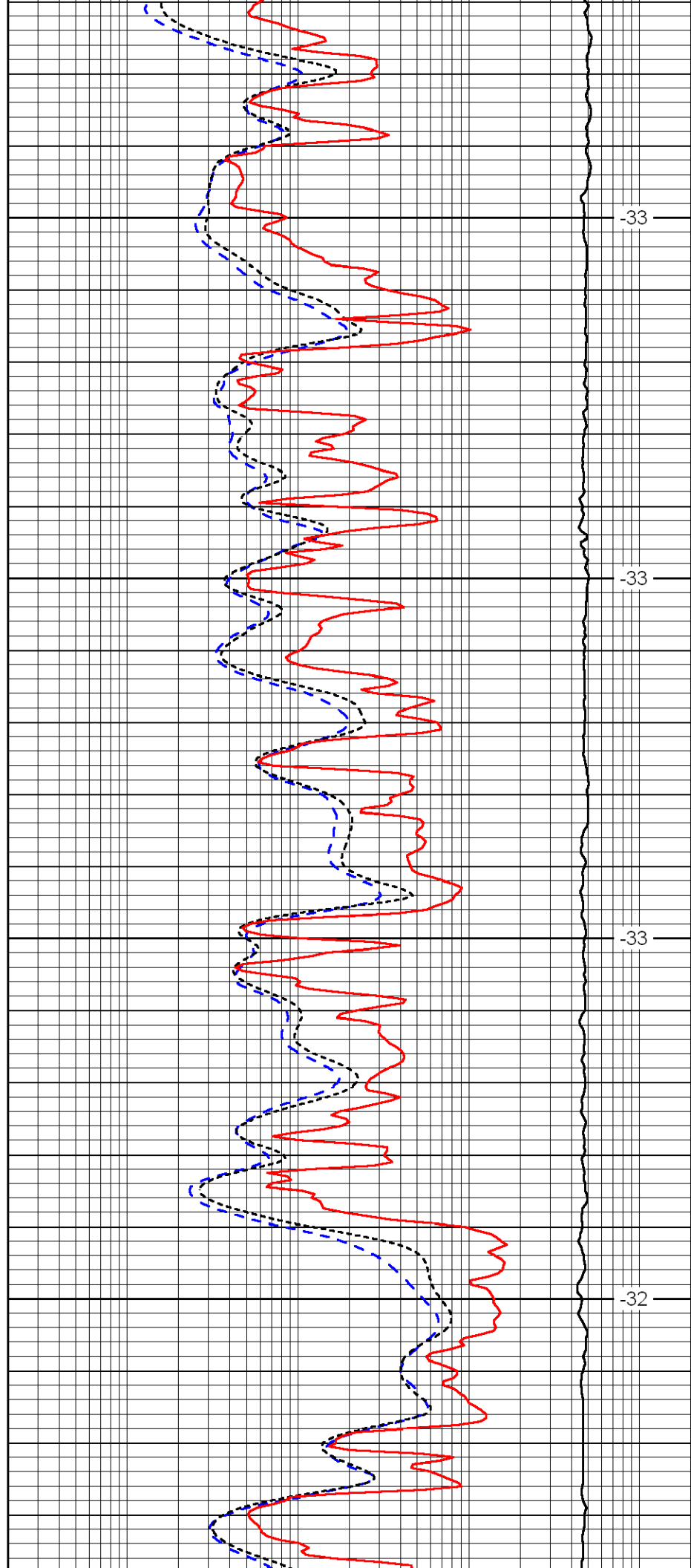


3550

3600

3650

3700

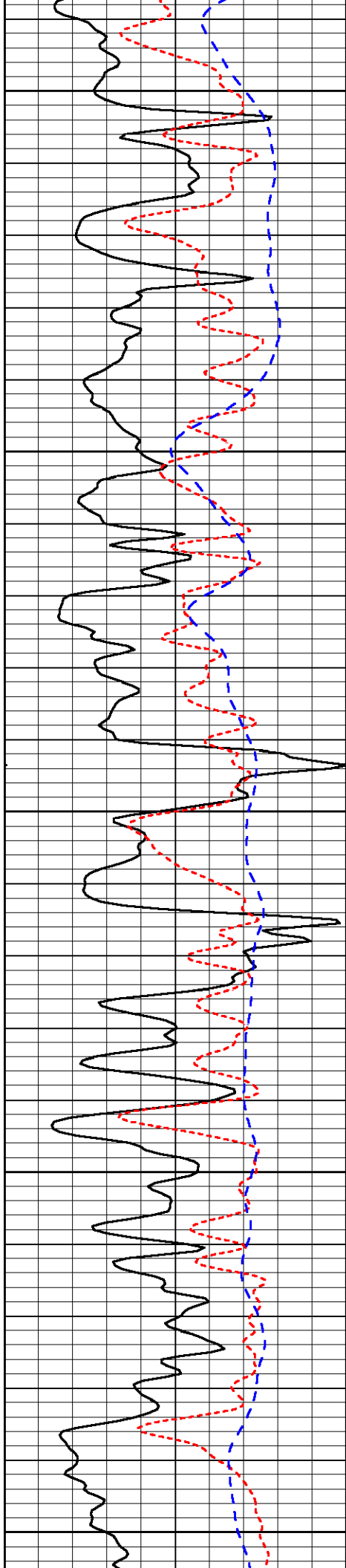


-33

-33

-33

-32



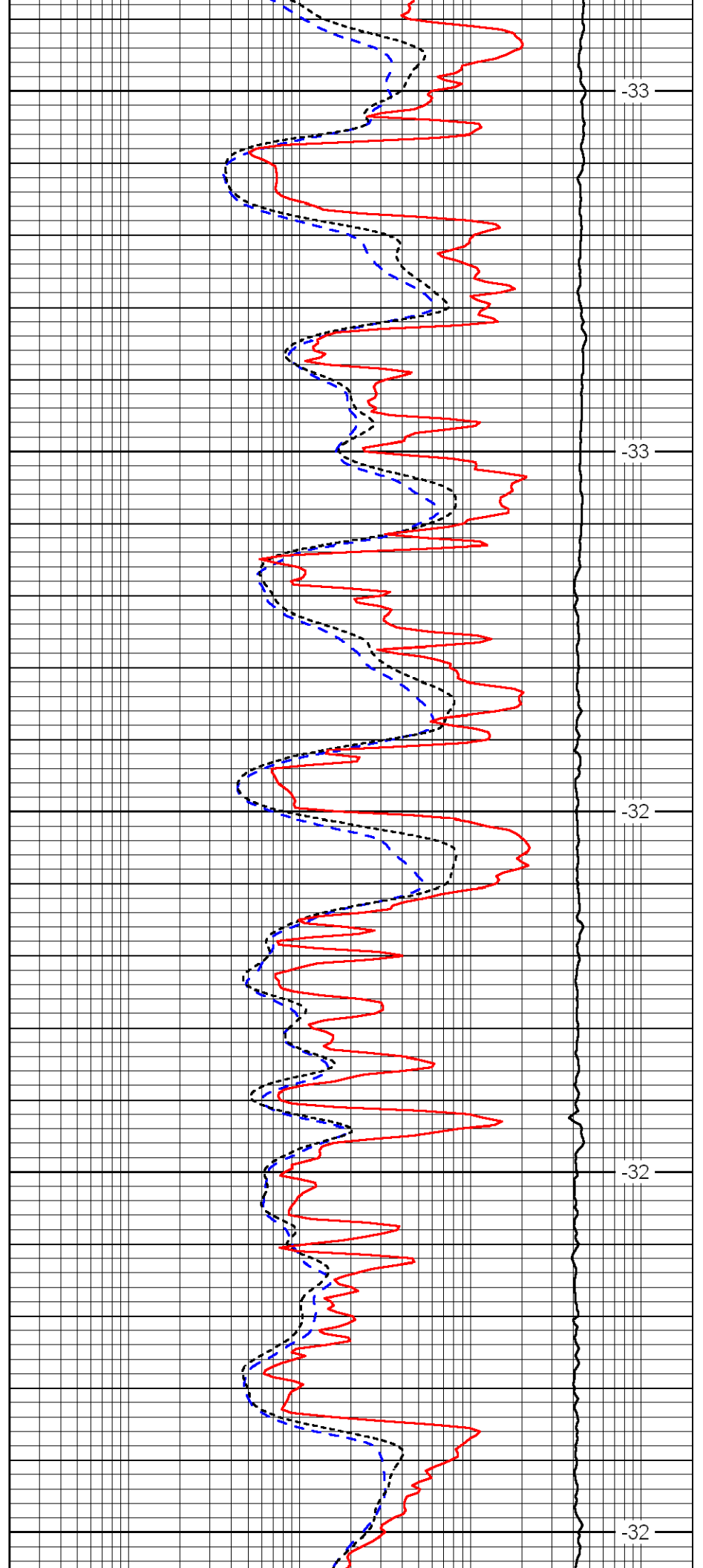
3750

3800

3850

3900

3950



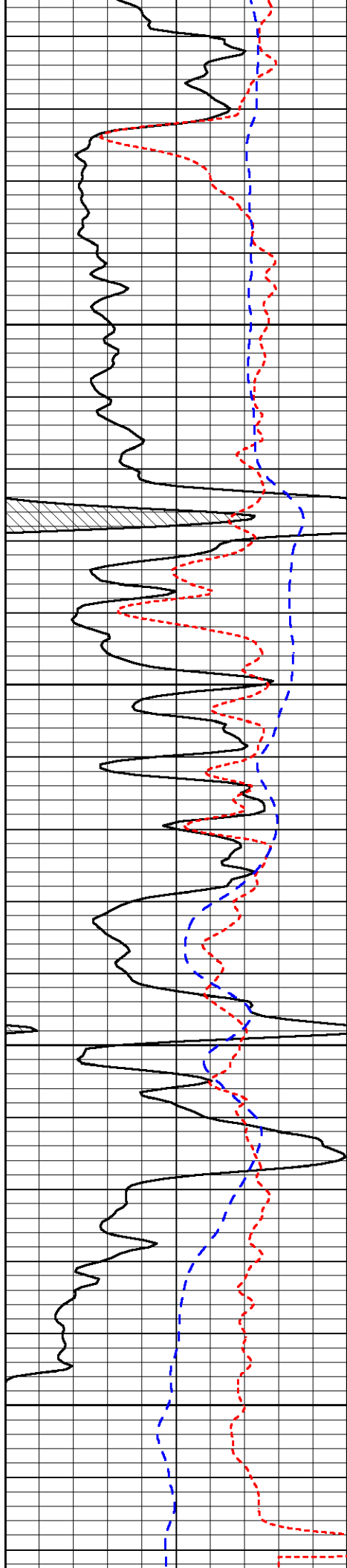
-33

-33

-32

-32

-32

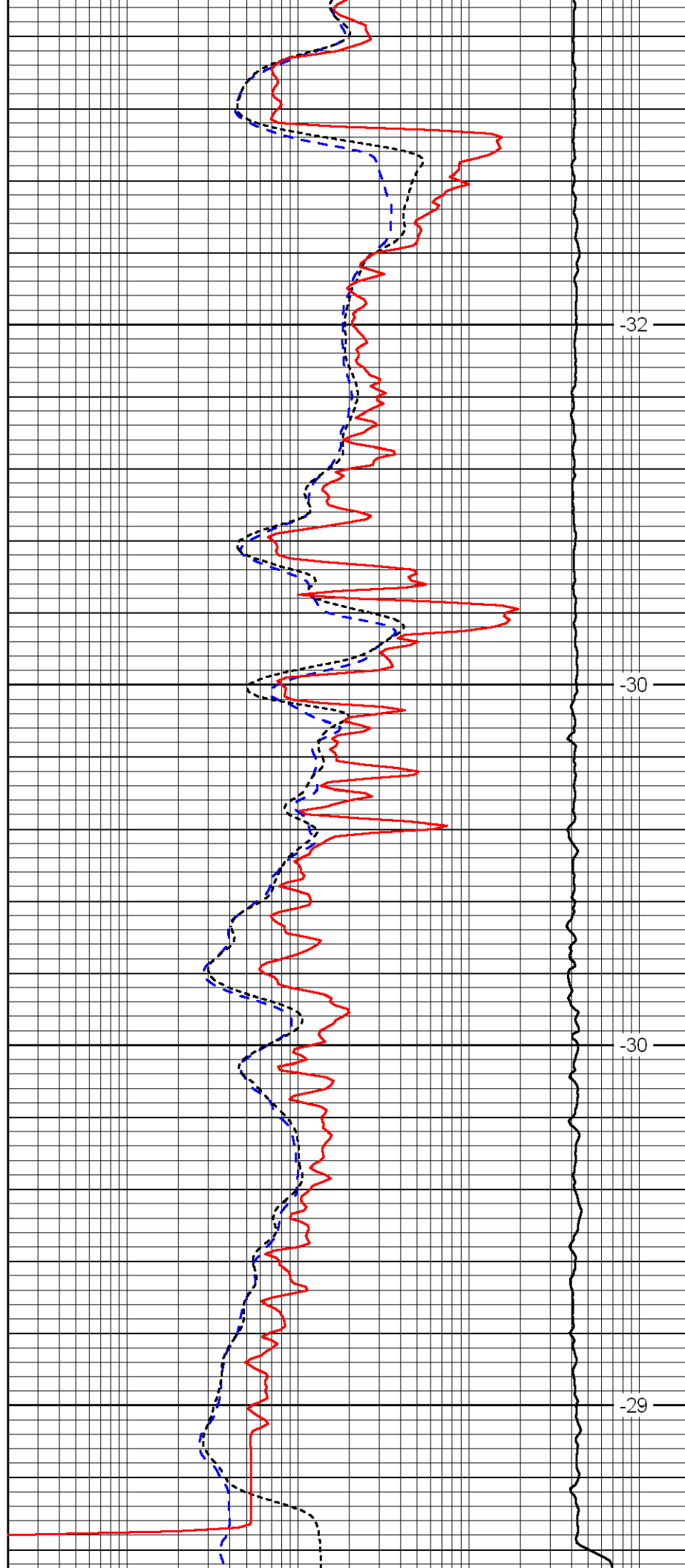


4000

4050

4100

4150



-32

-30

-30

-29

0	Gamma Ray	150
-160	RXO/RT	40
-200	SP	0

0.2	Deep Resistivity	2000
0.2	Medium Resistivity	2000
0.2	Shallow Resistivity	2000
10000	Line Tension	0

LSPD