



Dual Induction Log

DIGITAL LOG (785) 625-3858

API No. 15-199-20,390-00-00	Company Bayswater Expl. & Production, LLC	Well Ray Smith 24-33 No.1	Field Wildcat	County Wallace	State Kansas	Location SW SE SW 344' FSL & 1691' FWL	Other Services CNL/CDL BHCS
	Sec: 33	Twp: 15S	Rge: 40W				Elevation K.B. 3690 D.F. G.L. 3679

Permanent Datum	Ground Level	Elevation	3679
Log Measured From	Kelly Bushing	11 Ft. Above Perm. Datum	
Drilling Measured From	Kelly Bushing		
Date	3/9/2011		
Run Number	One		
Depth Driller	5200		
Depth Logger	5199		
Bottom Logged Interval	5198		
Top Log Interval	350		
Casing Driller	8.625 @ 365		
Casing Logger	364		
Bit Size	7.875		
Type Fluid in Hole	Chemical		
Salinity, ppm CL	3.500		
Density / Viscosity	9.5 57		
pH / Fluid Loss	10.5 7.2		
Source of Sample	Flowline		
Rm @ Meas. Temp	.65 @ 58		
Rmf @ Meas. Temp	.49 @ 58		
Rmc @ Meas. Temp	.88 @ 58		
Source of Rmf / Rmc	Charts		
Rm @ BHT	.29 @ 130		
Operating Rig Time	4 1/2 Hours		
Max Rec. Temp. F	130		
Equipment Number	17		
Location	Hays		
Recorded By	C. Desaire		
Witnessed By	Bob Kozarek		
		Gary Duke	

<<< Fold Here >>>

All interpretations are opinions based on inferences from electrical or other measurements and we cannot and do not guarantee the accuracy or correctness of any interpretation, and we shall not, except in the case of gross or willful negligence on our part, be liable or responsible for any loss, costs, damages, or expenses incurred or sustained by anyone resulting from any interpretation made by any of our officers, agents or employees. These interpretations are also subject to our general terms and conditions set out in our current Price Schedule.

Comments

Thank you for using Log-Tech, Inc.
 (785) 625-3858
 Sharon Springs, 14 1/2 S,
 1 1/2 W, N Into

Database File: c:\warrior\data\bayswater_ray smith 24-33\bayhd.db
 Dataset Pathname: dil/baystk
 Presentation Format: dil2in
 Dataset Creation: Wed Mar 09 17:06:21 2011
 Charted by: Depth in Feet scaled 1:600

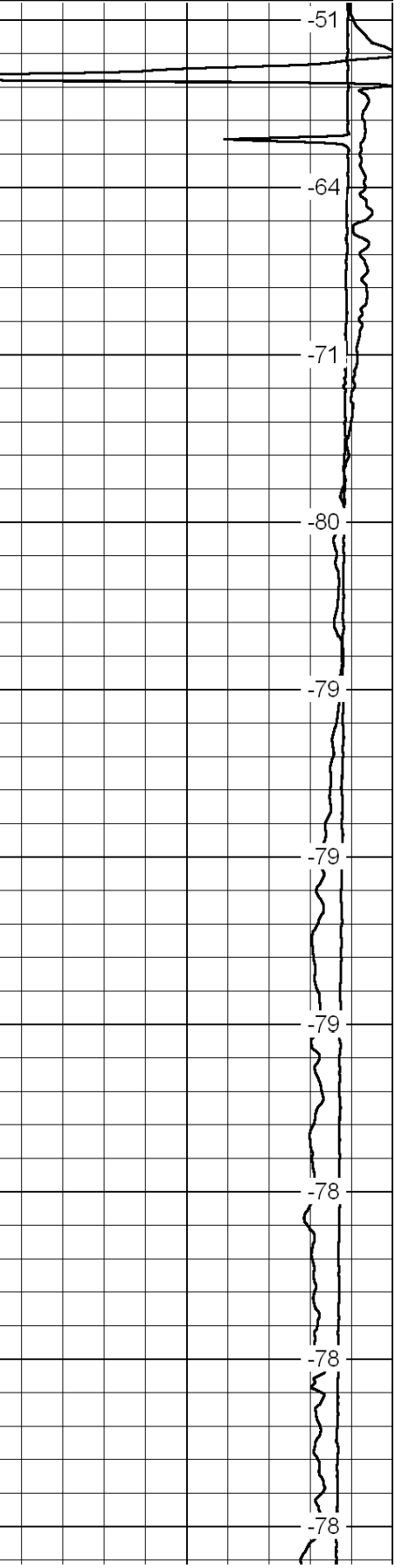
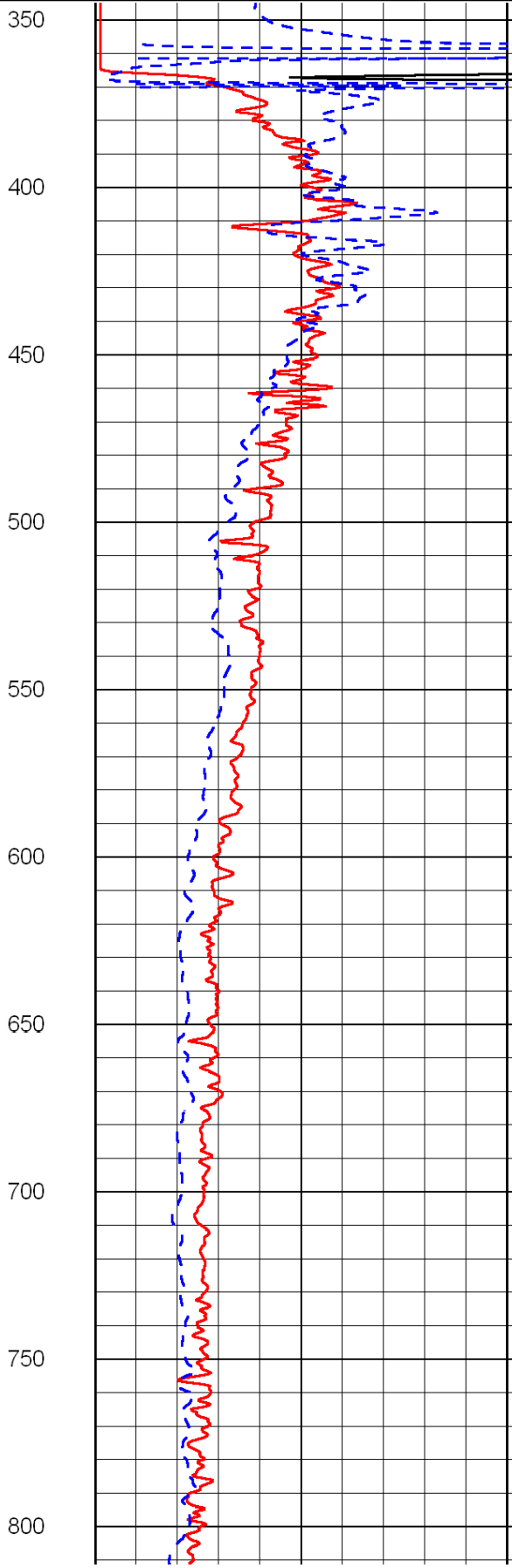
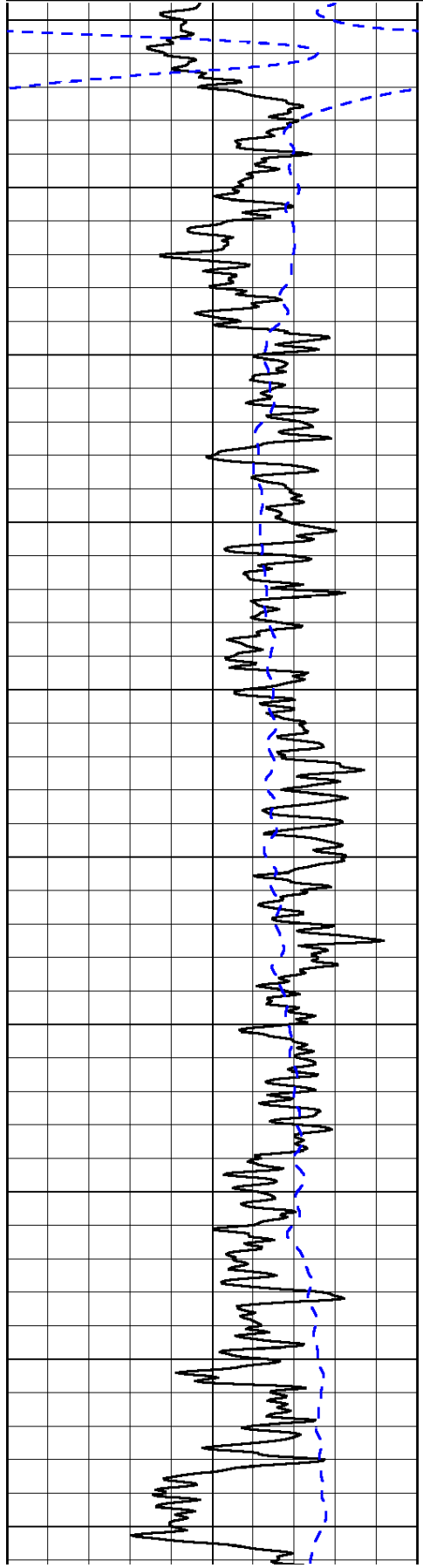
0	Gamma Ray	150
-200	SP (mV)	0

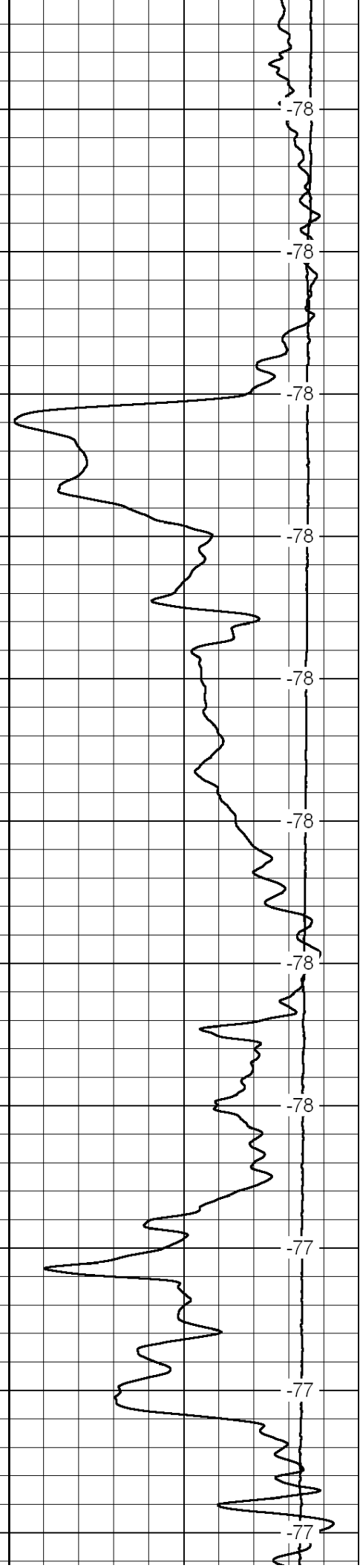
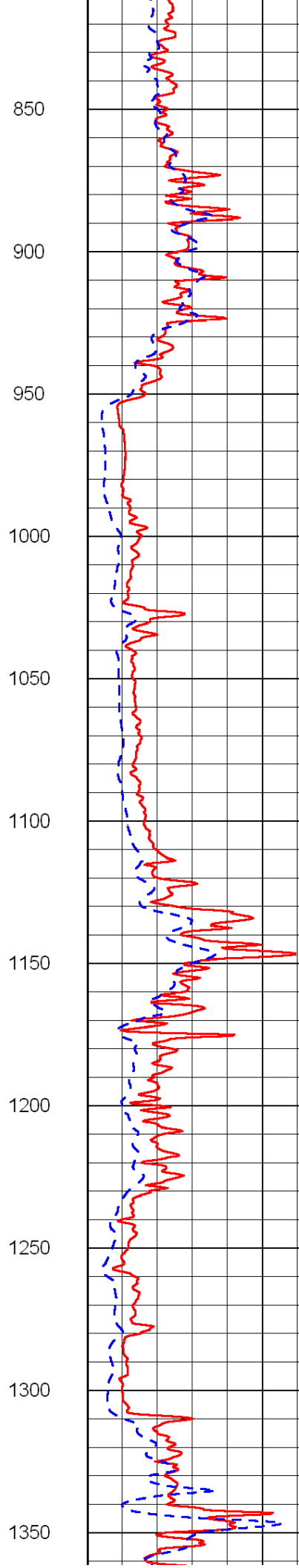
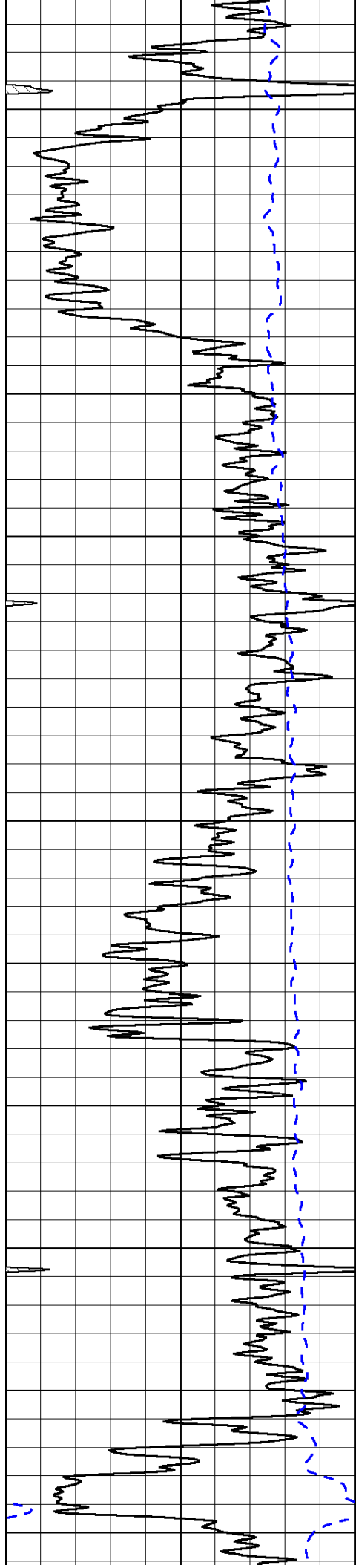
0	Shallow Resistivity	50
0	Deep Resistivity	50

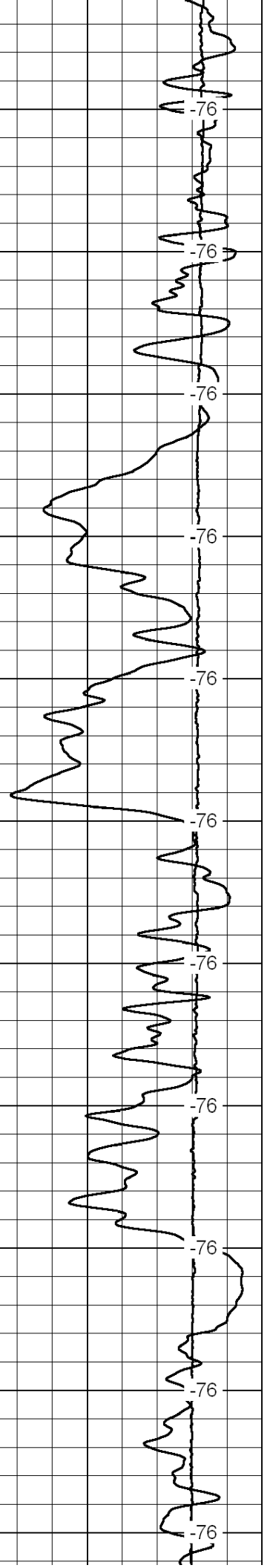
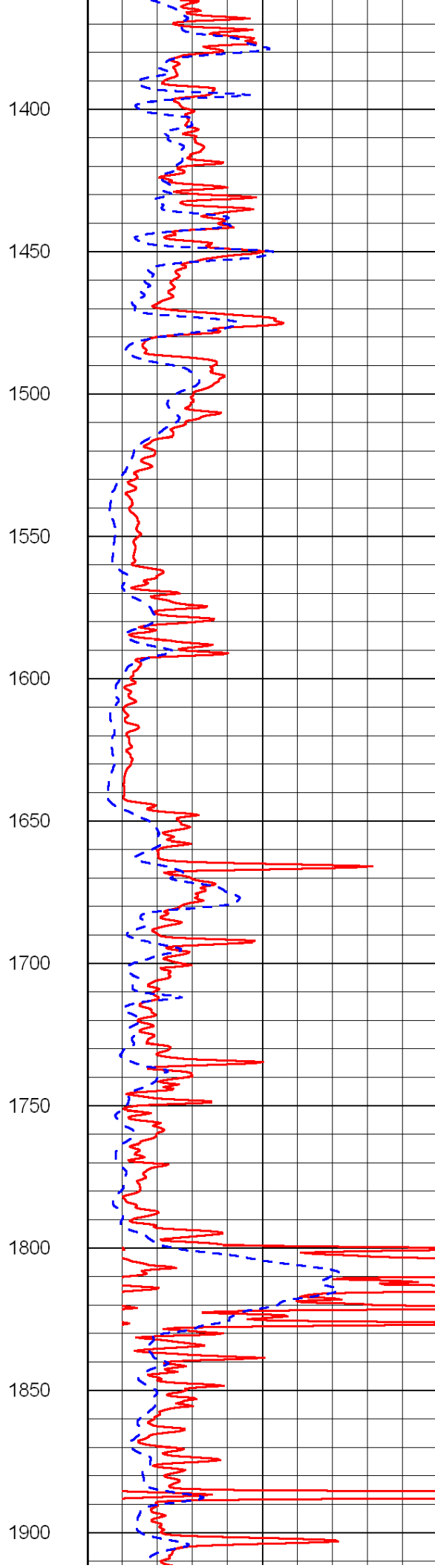
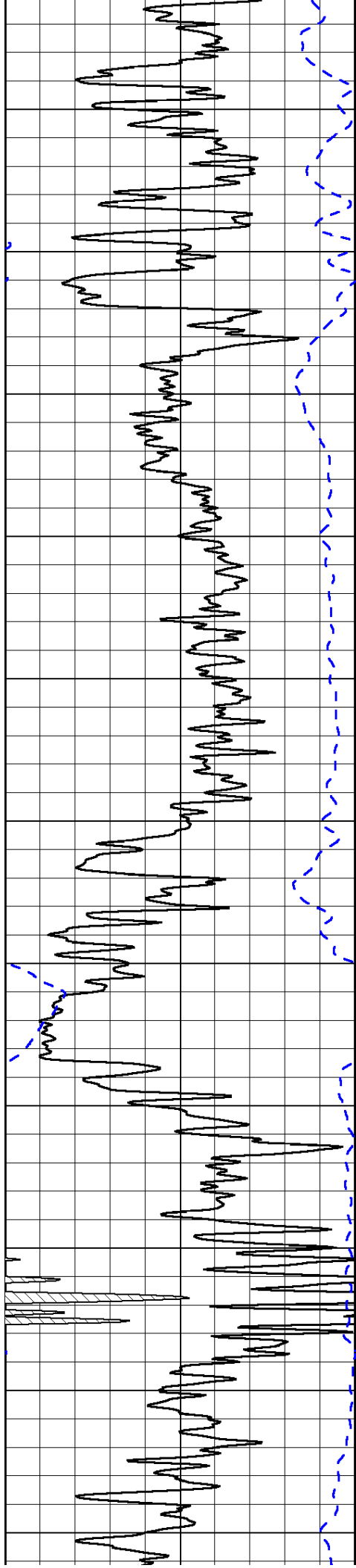
LSPD

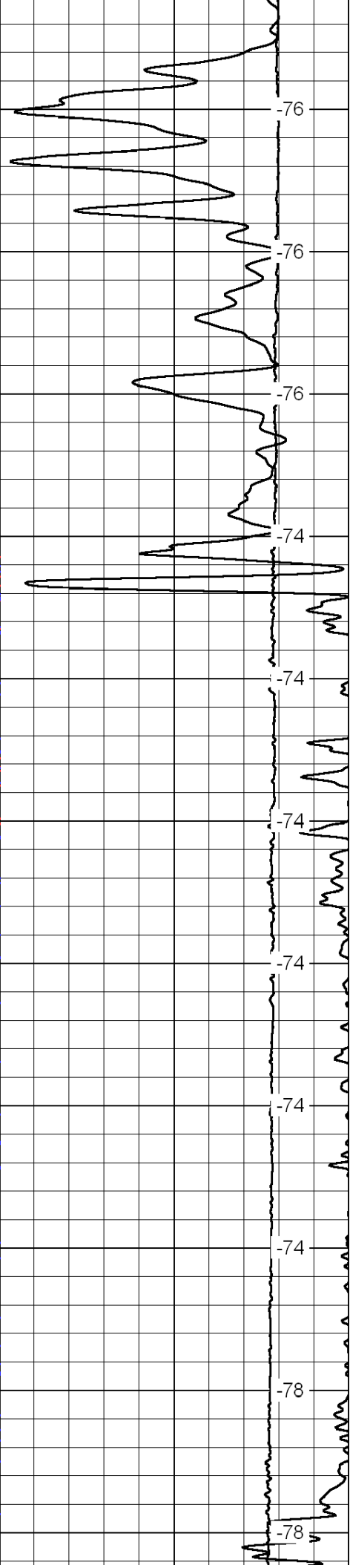
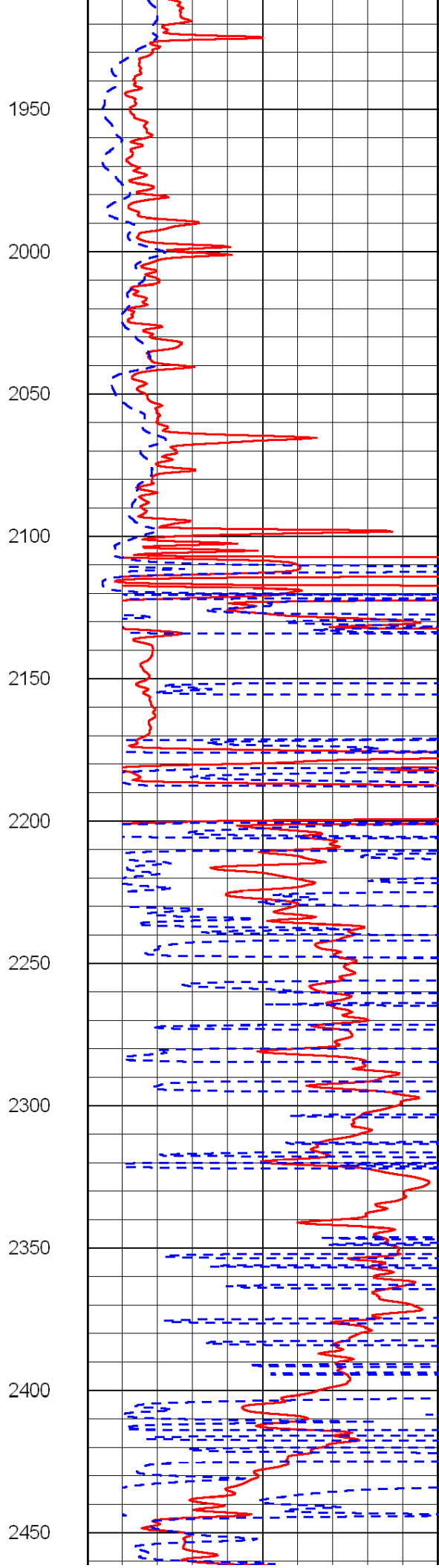
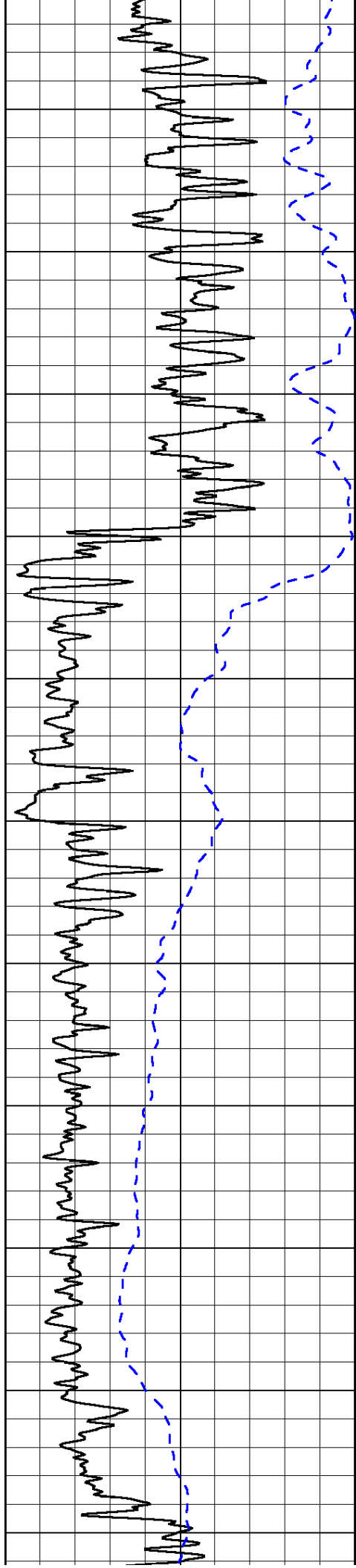
1000	Conductivity	0
15000	Line Tension	0

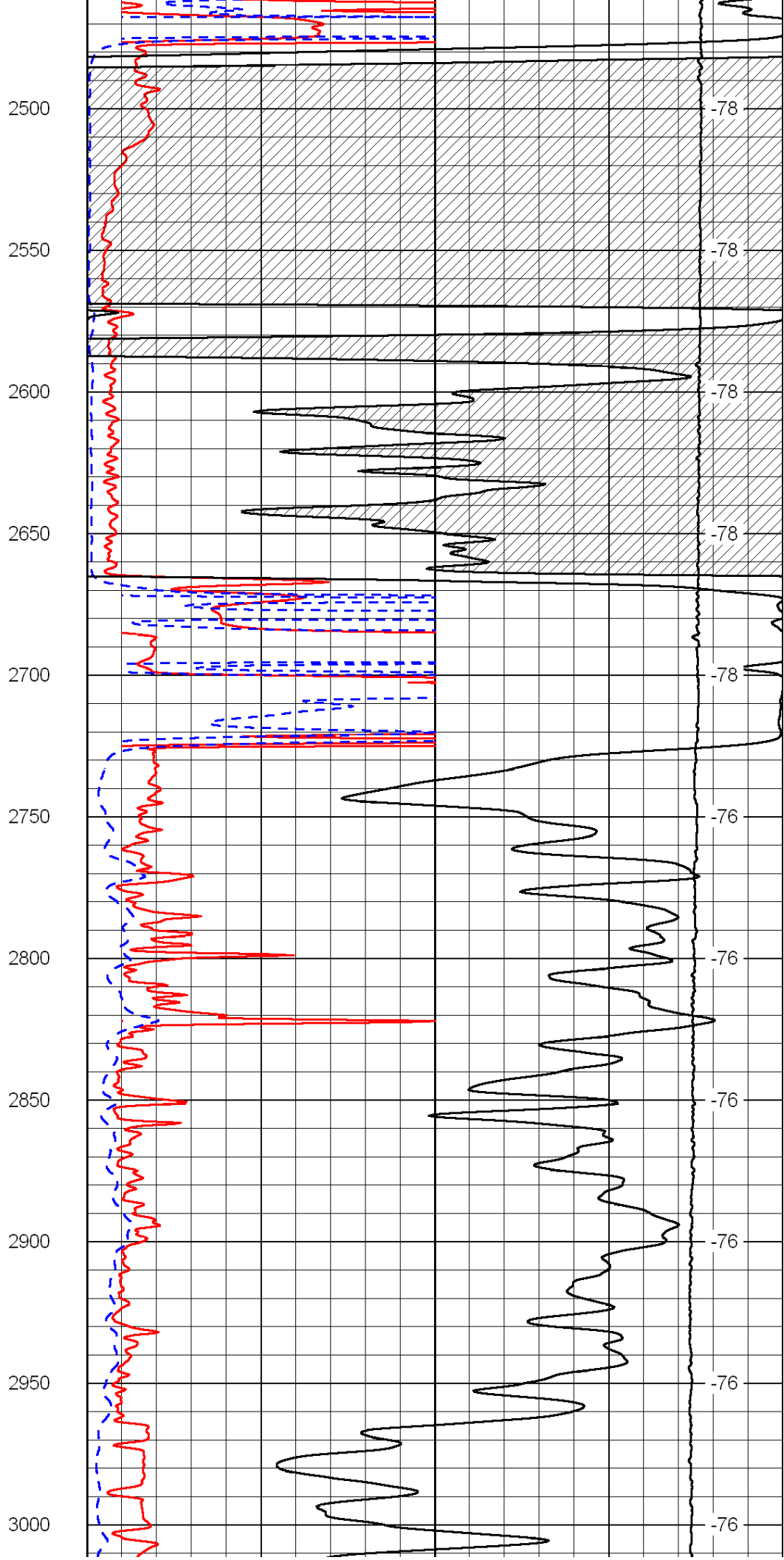
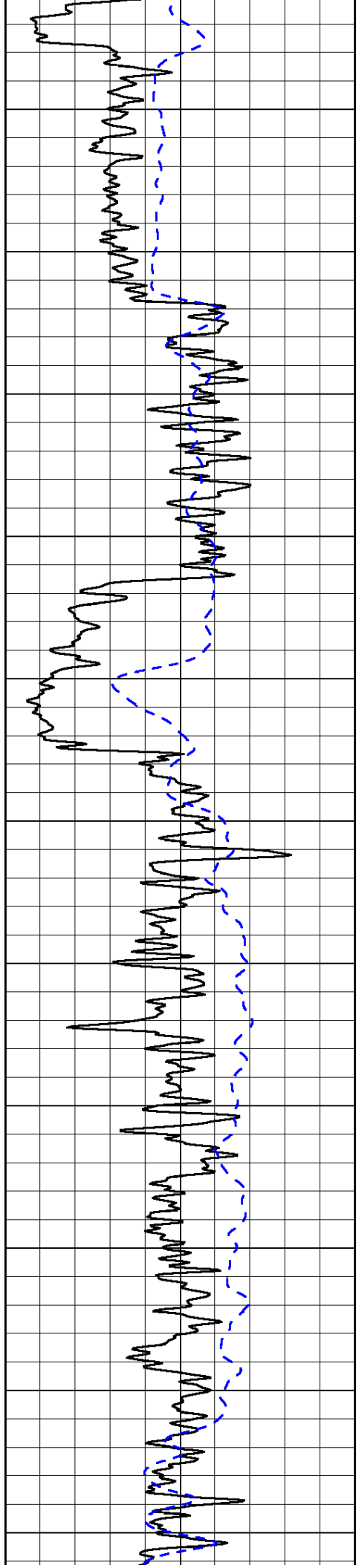
50	Shallow Resistivity	500
50	Deep Resistivity	500

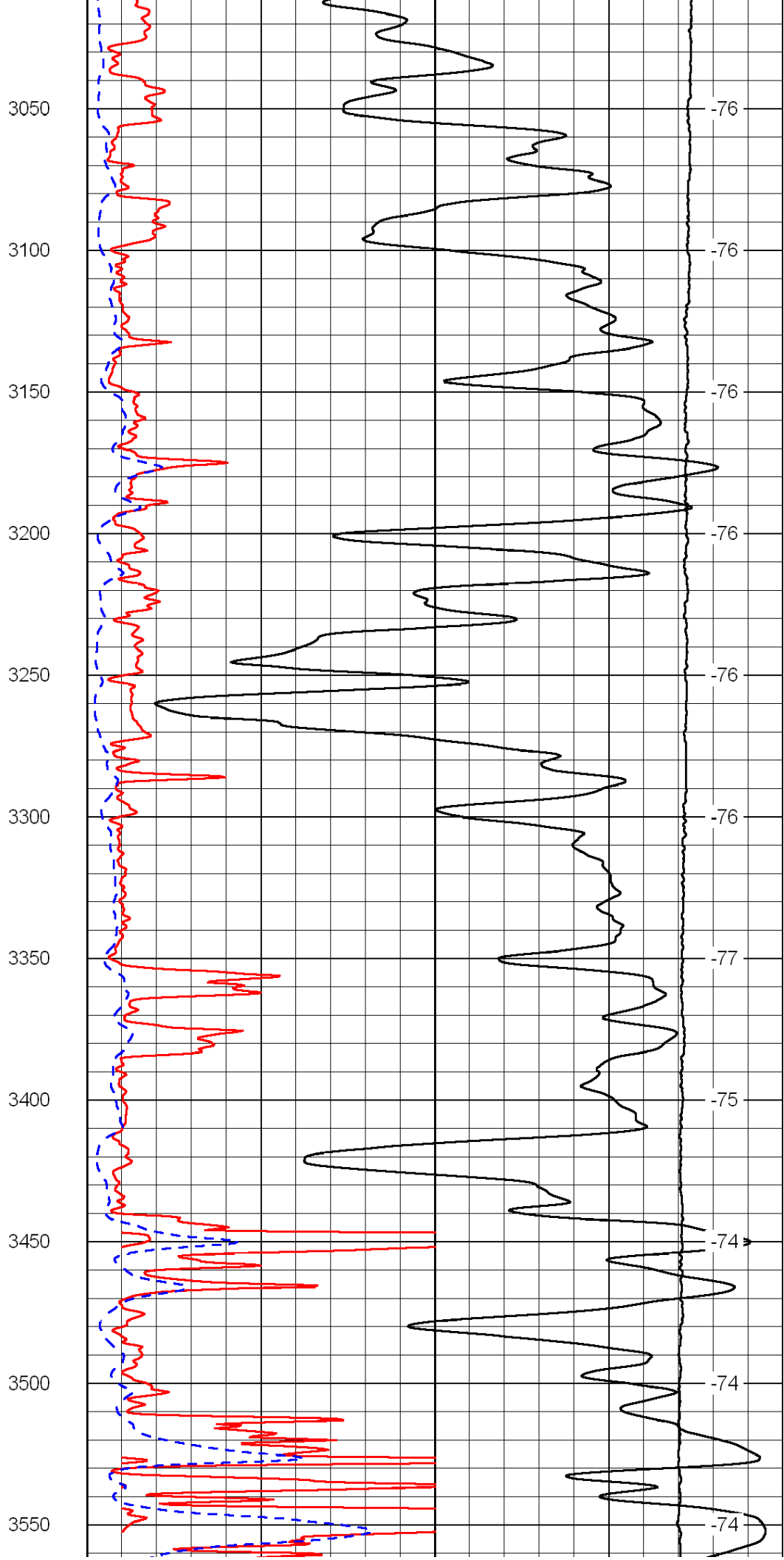
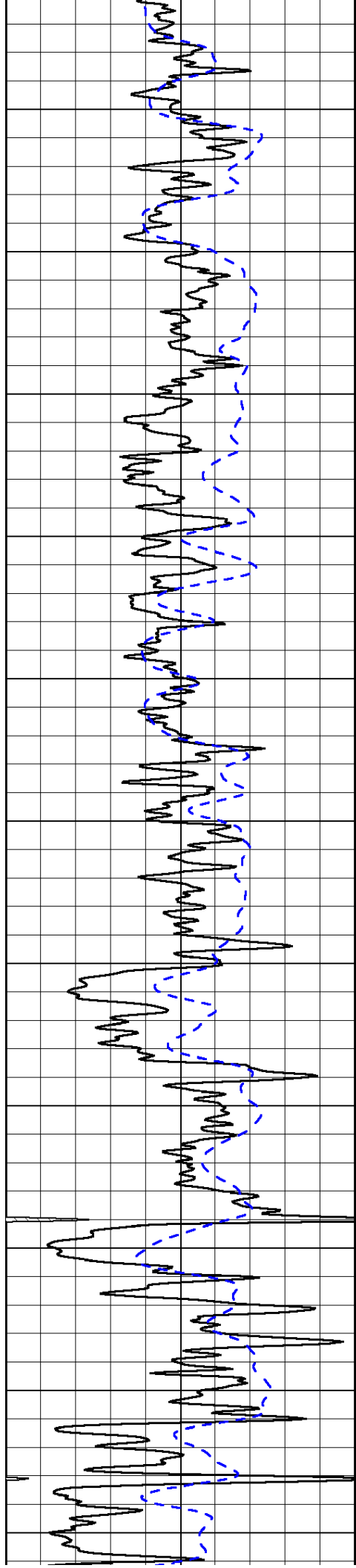


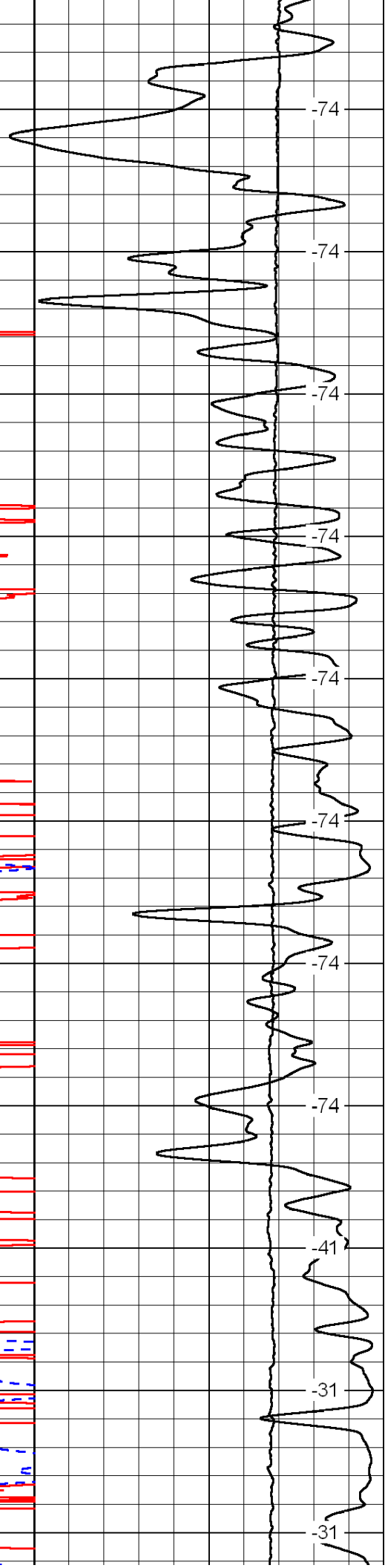
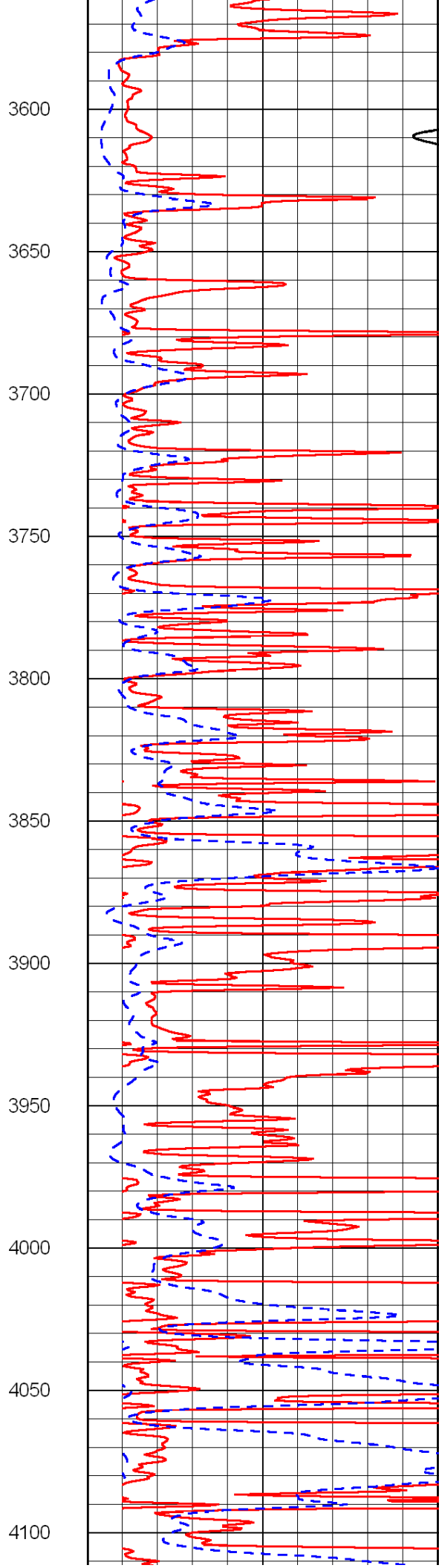
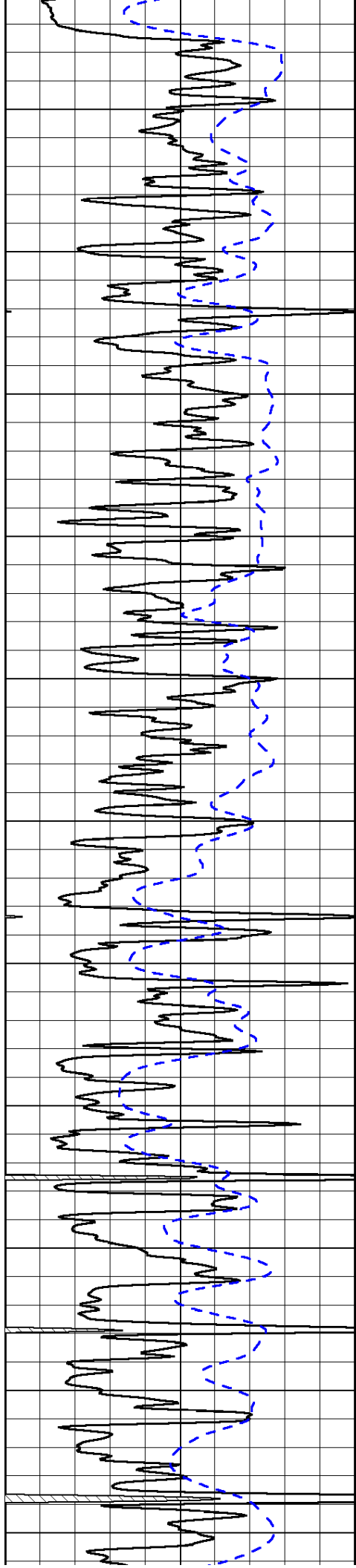


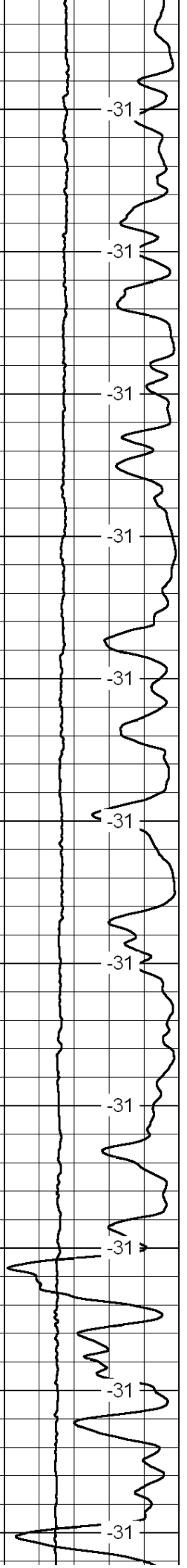
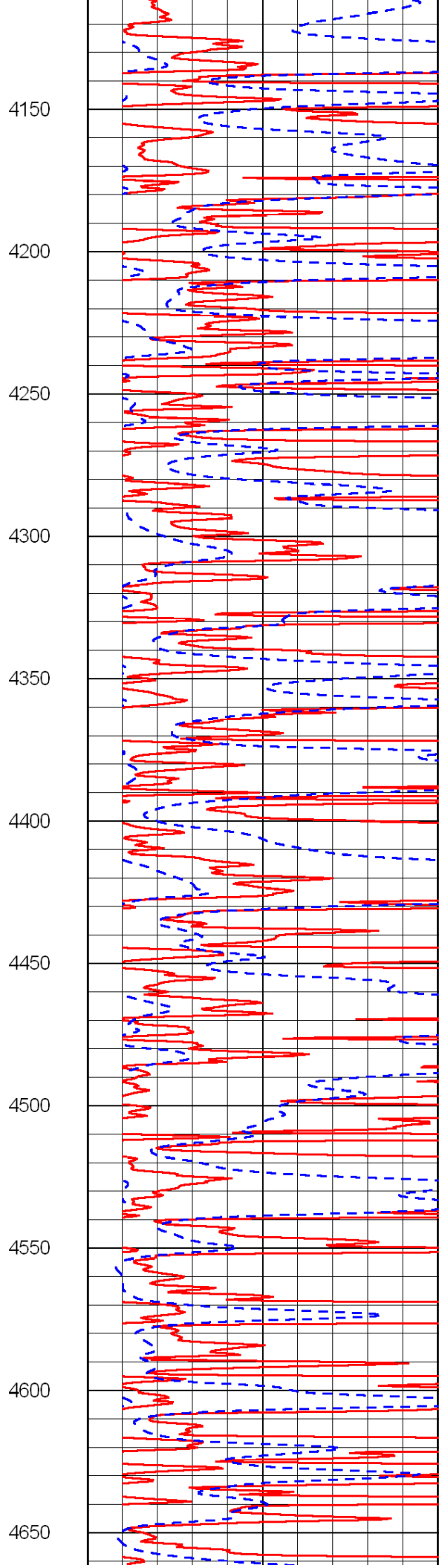
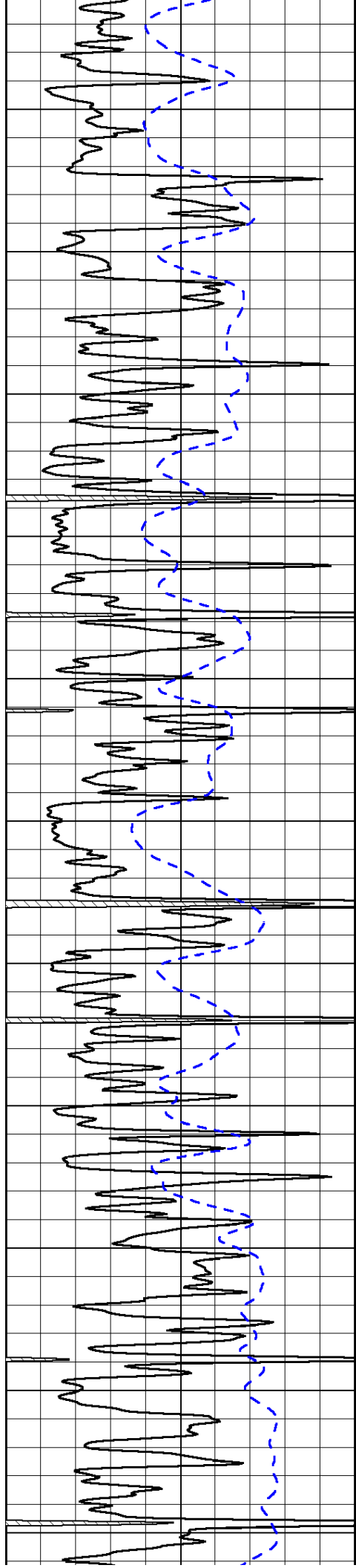


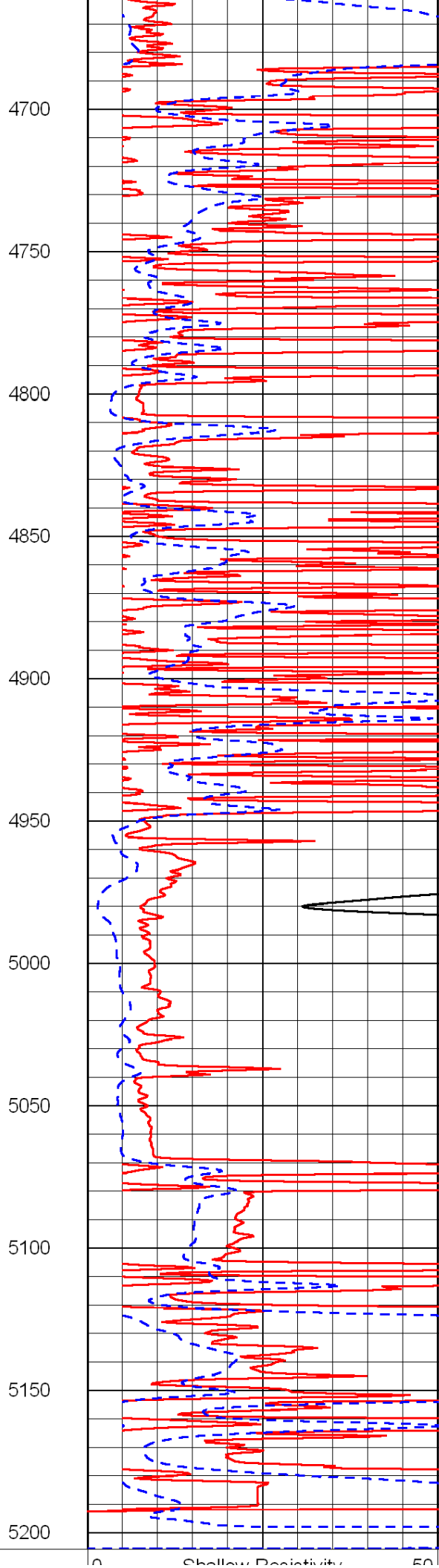
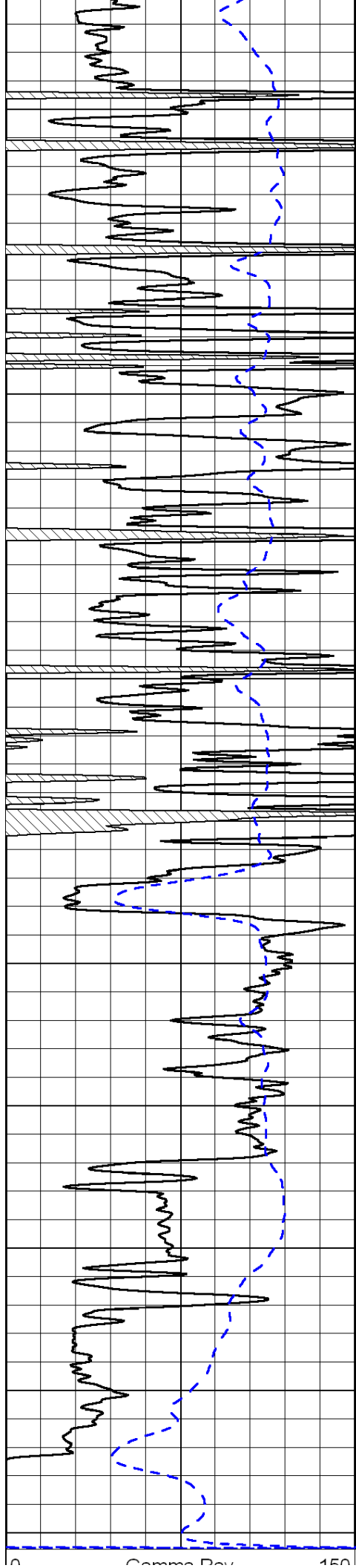












0	Gamma Ray	150
-200	SP (mV)	0

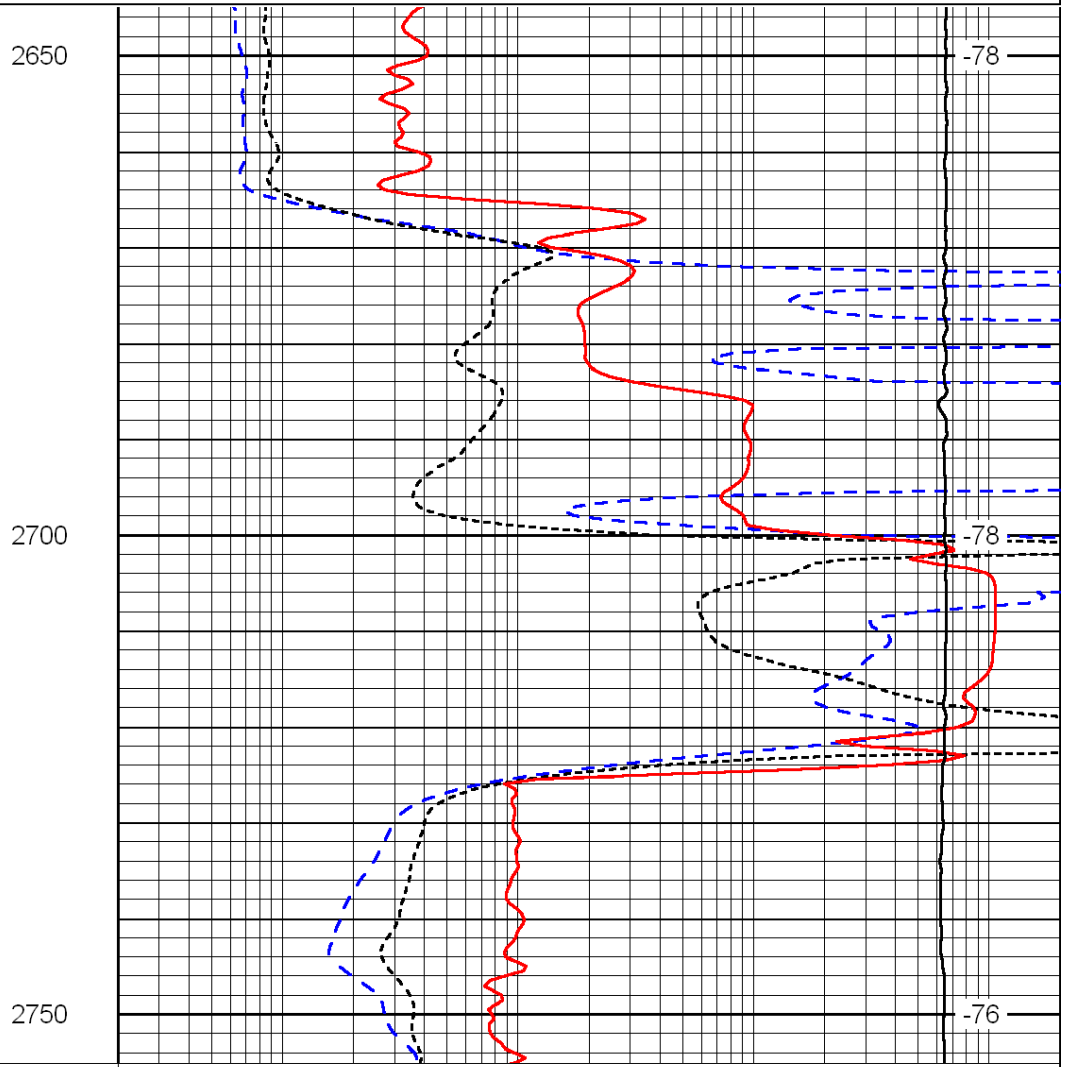
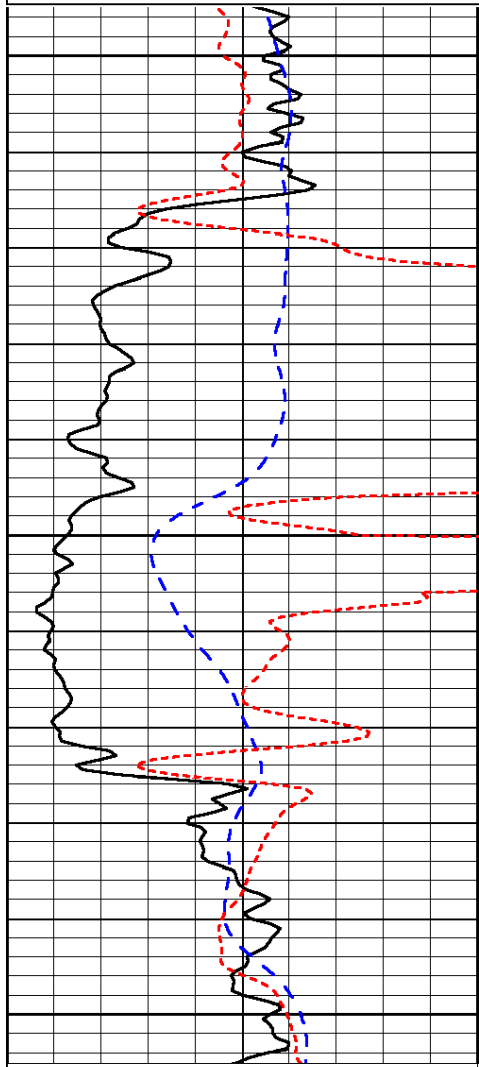
0	Shallow Resistivity	50
0	Deep Resistivity	50
1000	Conductivity	0
15000	Line Tension	0
50	Shallow Resistivity	500
50	Deep Resistivity	500

Database File: c:\warrior\data\bayswater_ray smith 24-33\bayhd.db
 Dataset Pathname: dil/baystk
 Presentation Format: dil
 Dataset Creation: Wed Mar 09 17:06:21 2011
 Charted by: Depth in Feet scaled 1:240

0	Gamma Ray	150
-200	SP (mV)	0
-160	Rxo / Rt	40

0.2	Deep Resistivity	2000
0.2	Medium Resistivity	2000
0.2	Shallow Resistivity	2000
15000	Line Tension	0

LSPD



0	Gamma Ray	150
-200	SP (mV)	0
-160	Rxo / Rt	40

0.2	Deep Resistivity	2000
0.2	Medium Resistivity	2000
0.2	Shallow Resistivity	2000
15000	Line Tension	0

LSPD

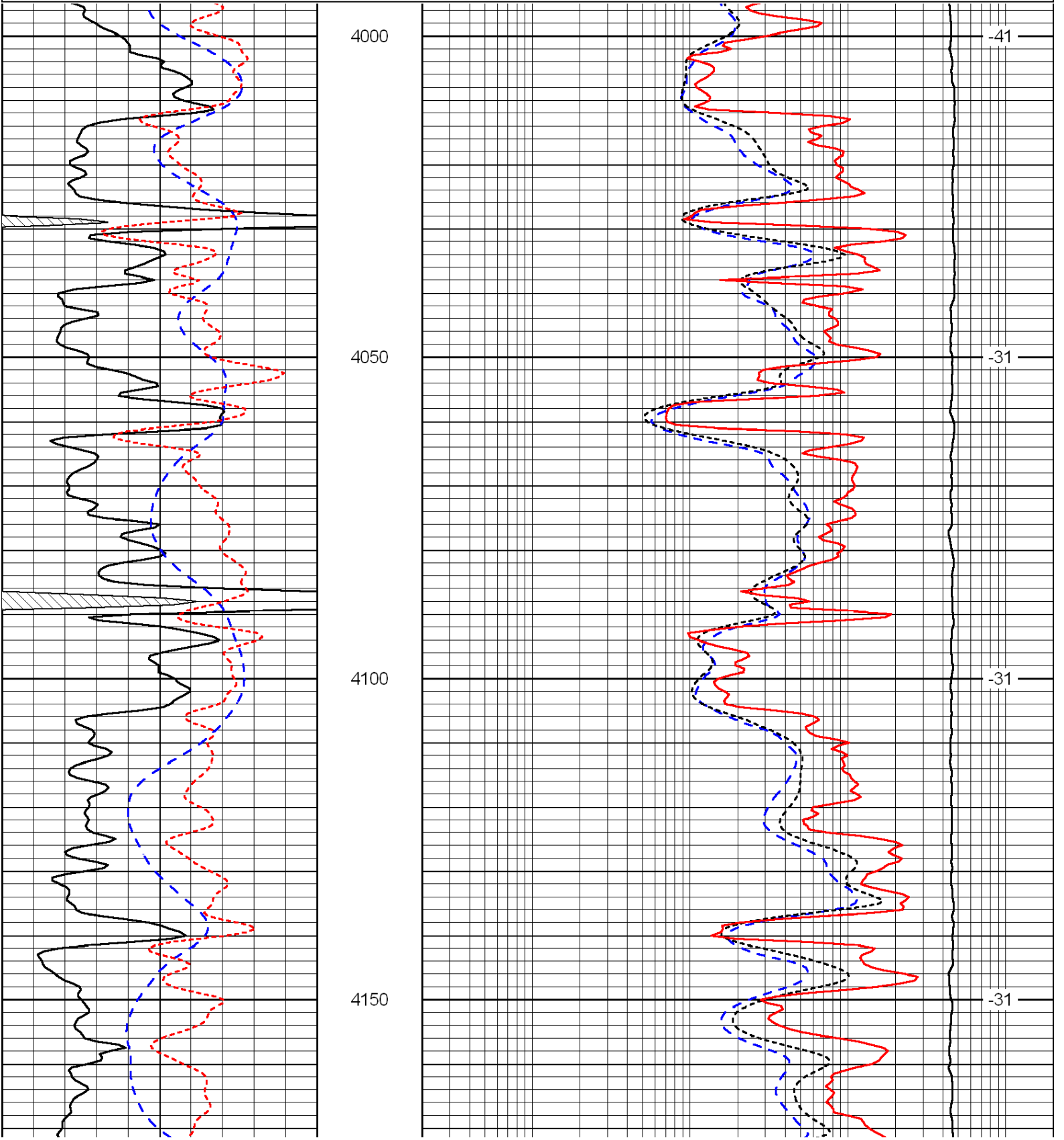
Database File: c:\warrior\data\bayswater_ray smith 24-33\bayhd.db
 Dataset Pathname: dil/baystk
 Presentation Format: dil
 Dataset Creation: Wed Mar 09 17:06:21 2011
 Charted by: Depth in Feet scaled 1:240

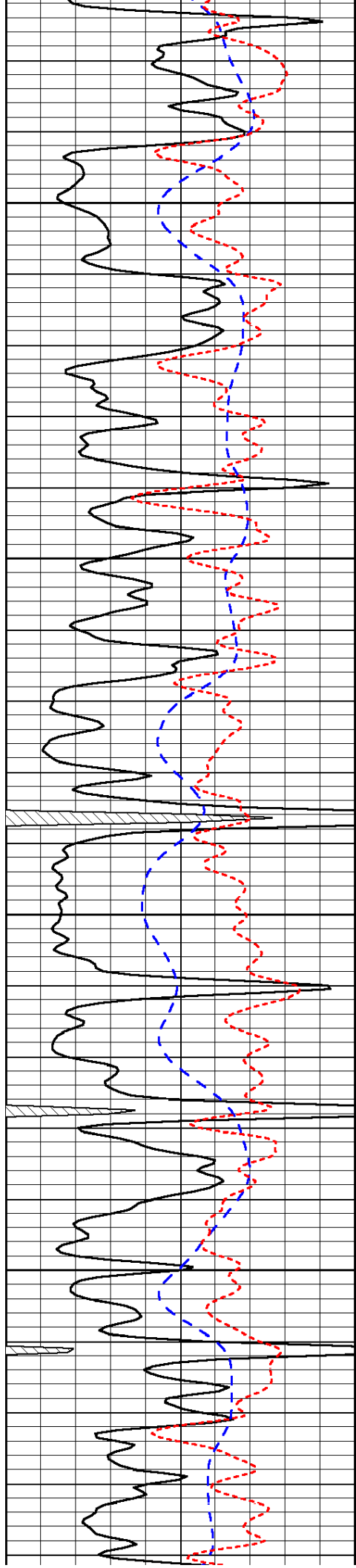
0	Gamma Ray	150
-200	SP (mV)	0
-160	Rxo / Rt	40

0.2	Deep Resistivity	2000
0.2	Medium Resistivity	2000
0.2	Shallow Resistivity	2000

15000	Line Tension	0
-------	--------------	---

LSPD



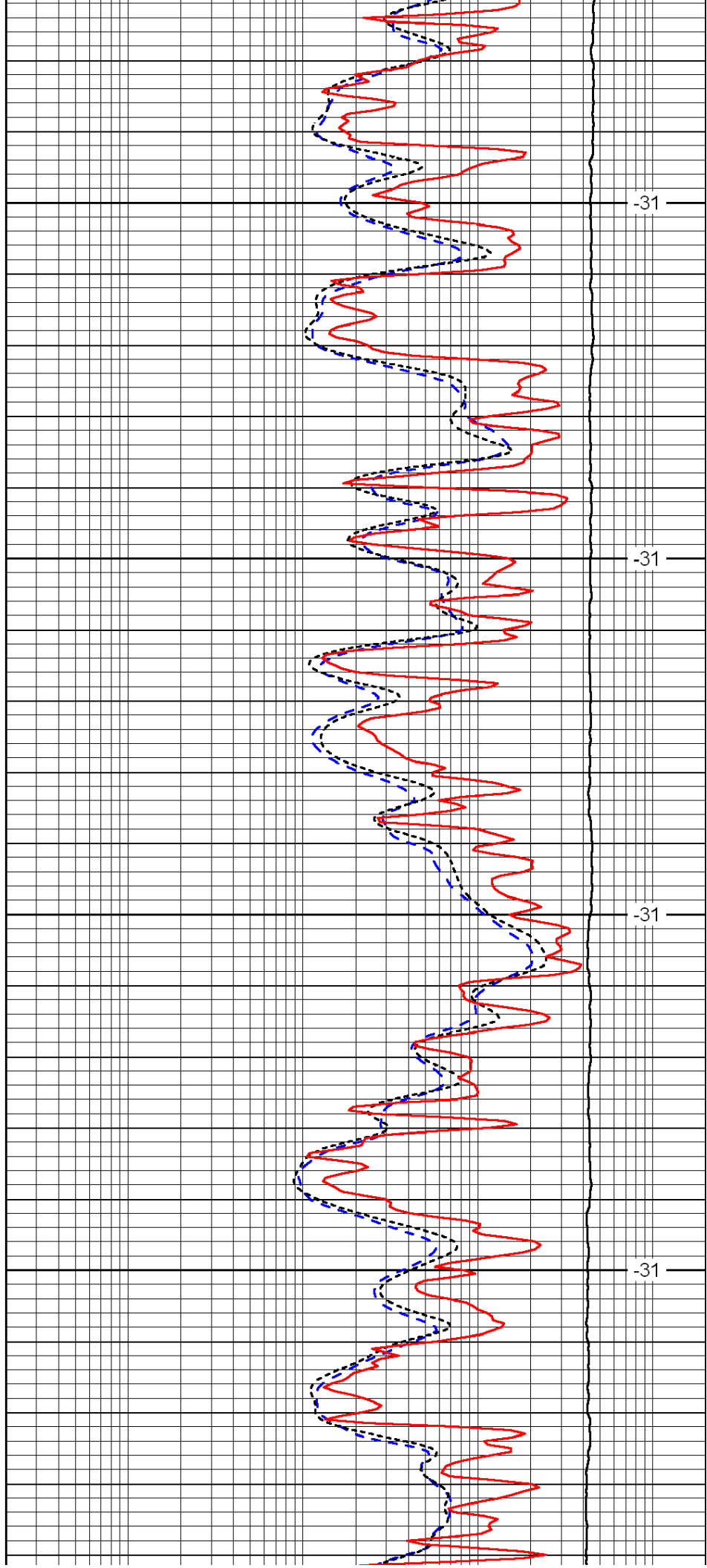


4200

4250

4300

4350

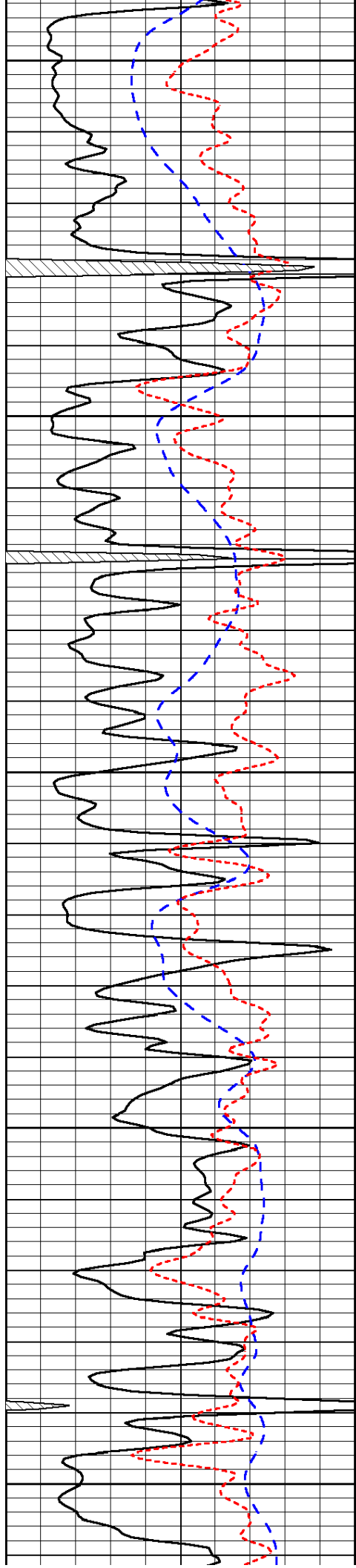


-31

-31

-31

-31



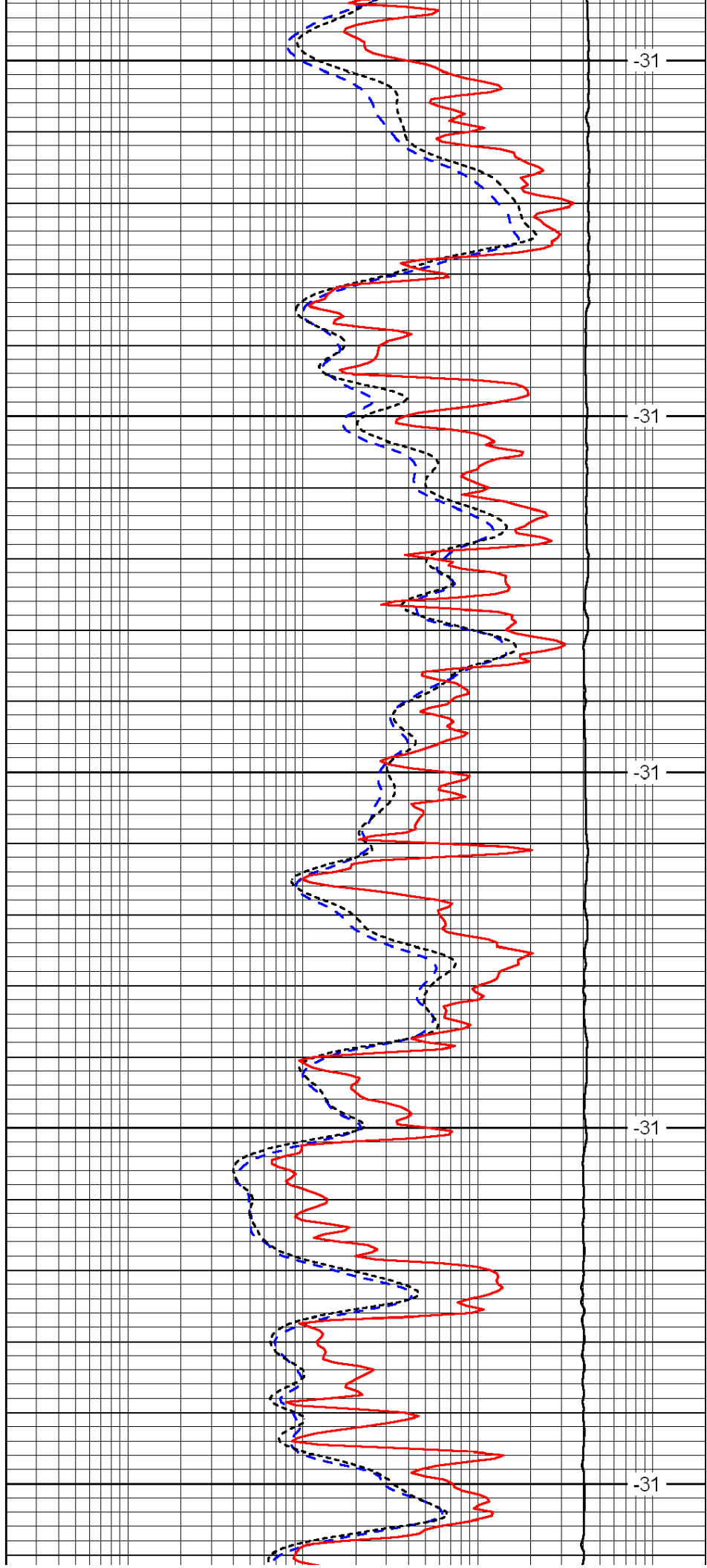
4400

4450

4500

4550

4600



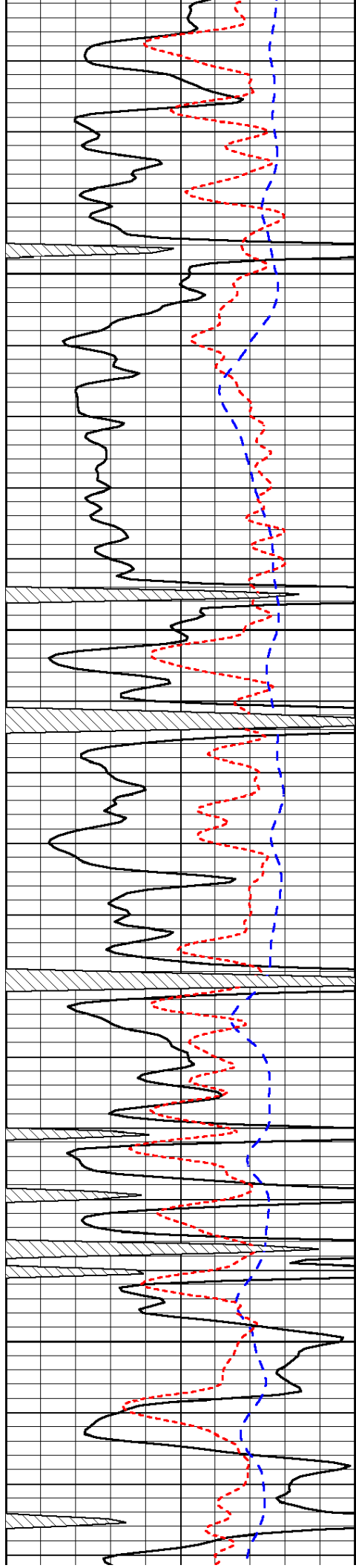
-31

-31

-31

-31

-31

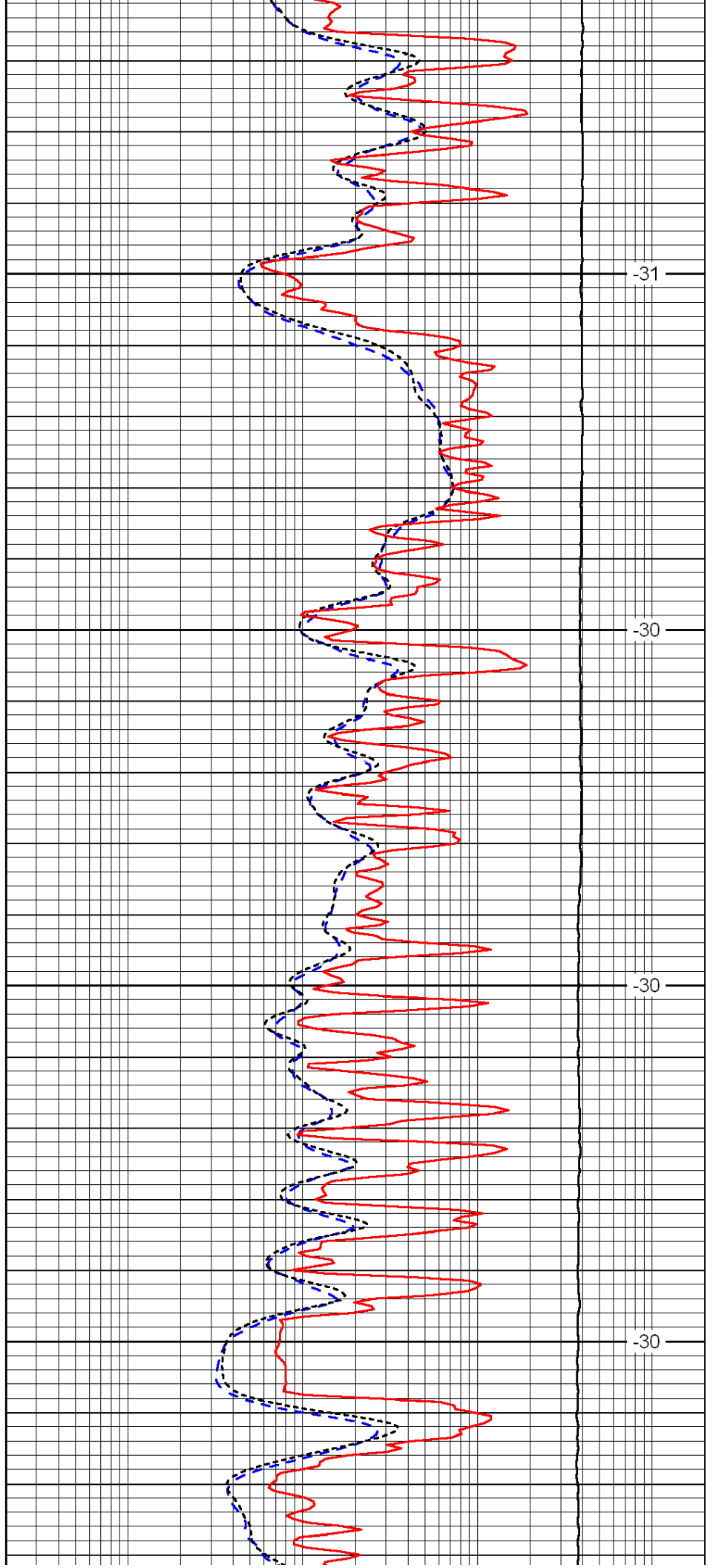


4650

4700

4750

4800

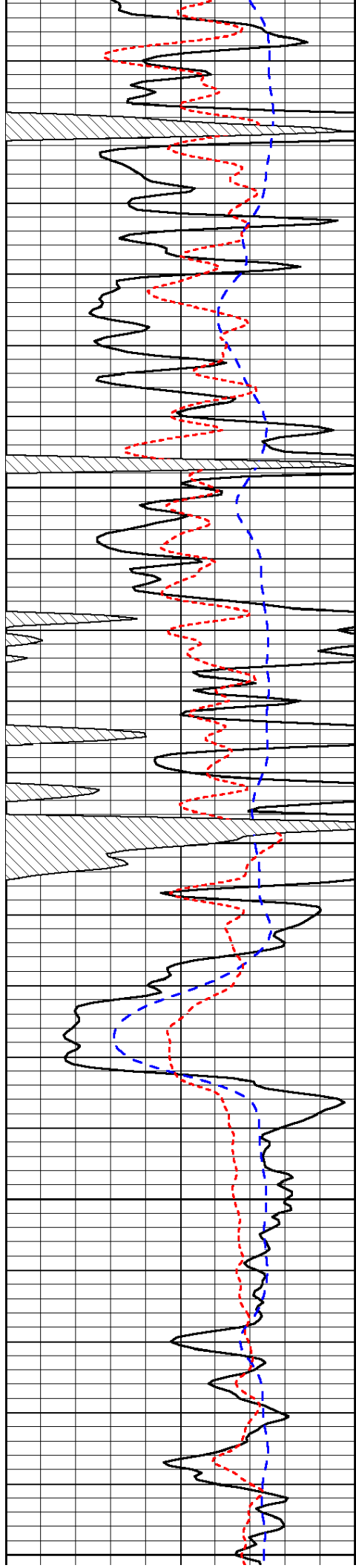


-31

-30

-30

-30



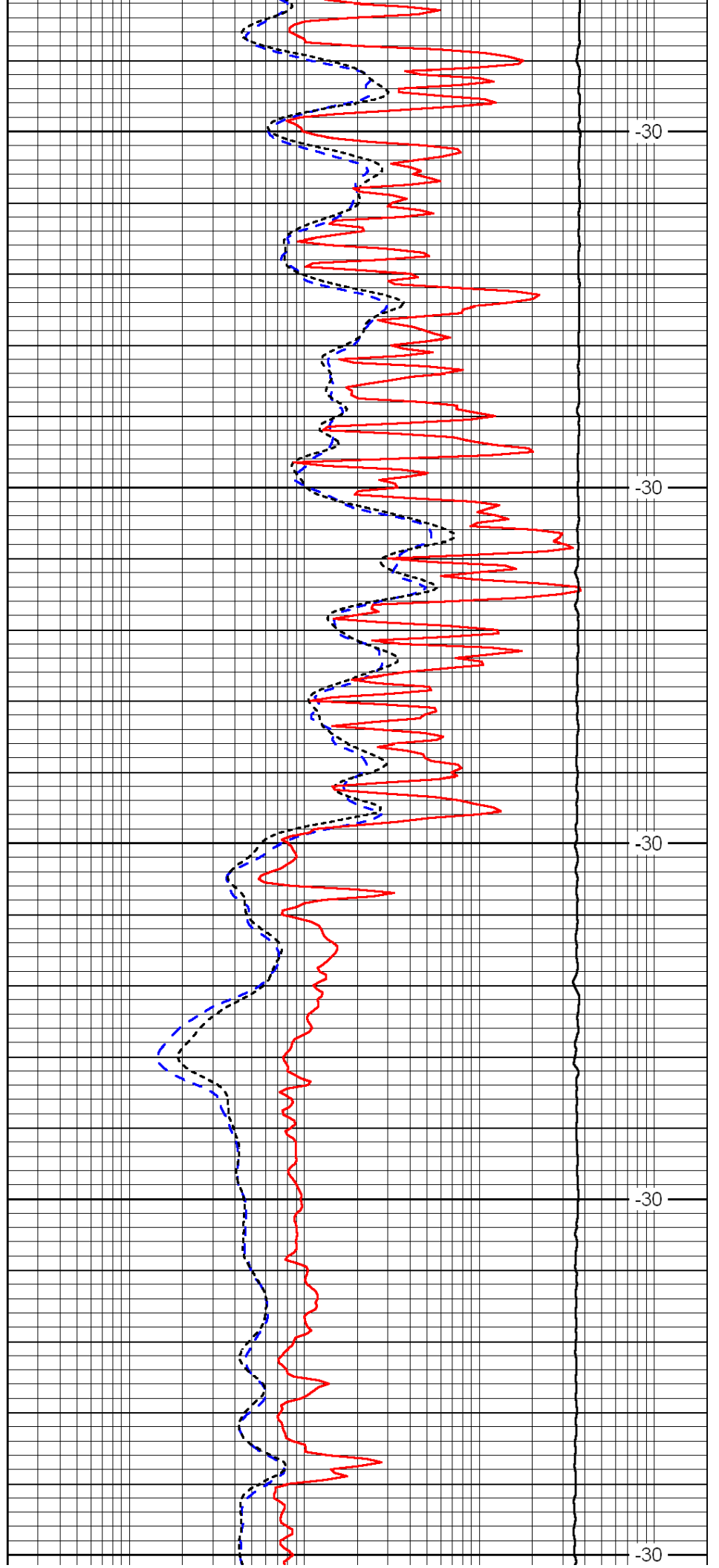
4850

4900

4950

5000

5050



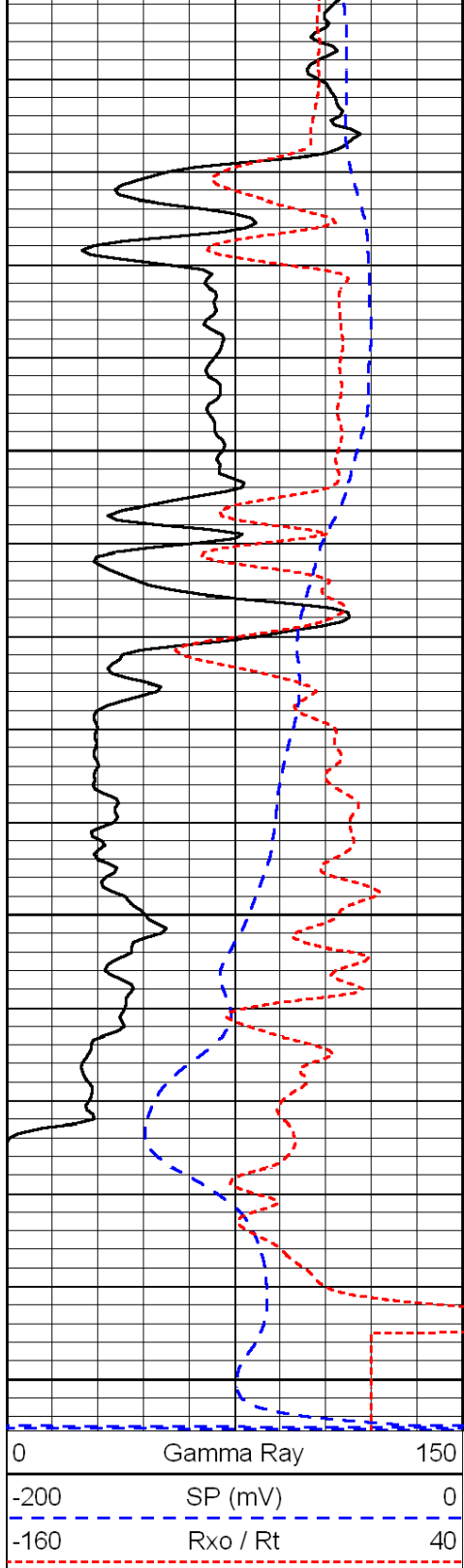
-30

-30

-30

-30

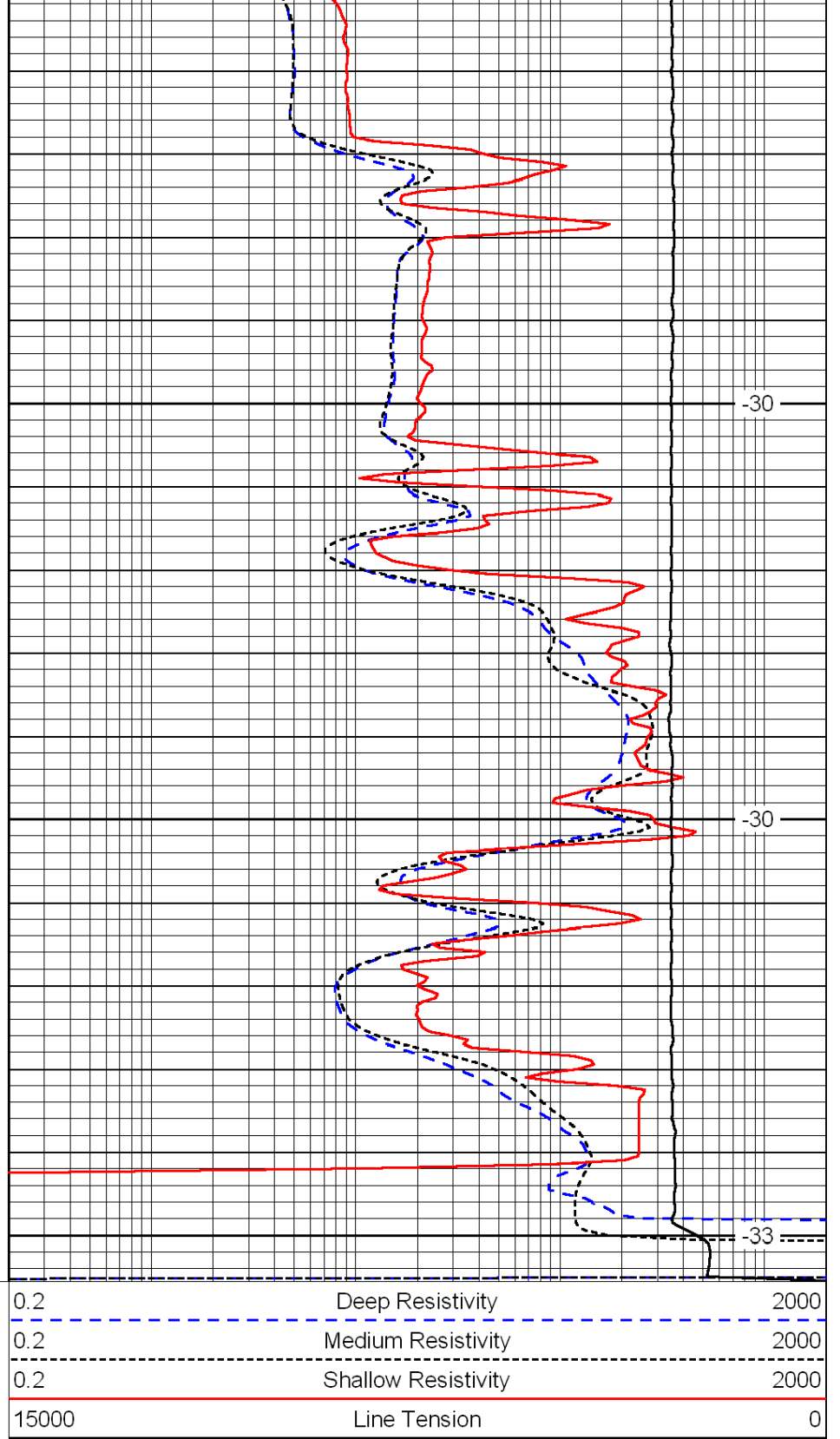
-30



5100

5150

5200



-30

-30

-33

LSPD