



Green Country Wireline

GAMMA RAY
CEMENT BOND
CCL VDL

Company JONES & BUCK DEVELOPEMENT
Well THOMPSON # JBD 36-4
Field SEDAN-PERU
County CHAUTAUQUA
State KANSAS

Company JONES & BUCK DEVELOPEMENT
Well THOMPSON # JBD 36-4
Field SEDAN-PERU
County CHAUTAUQUA State KANSAS

Location: API #: 15-019-27056

NE SW NE NE
4354' FSL & 765' FEL

SEC 36 TWP 33S RGE 10E

Permanent Datum G.L. Elevation 874'

Log Measured From G.L.

Drilling Measured From G.L.

Other Services
Elevation
K.B. ---
D.F. ---
G.L. 874'

Date 11-29-11

Run Number 1

Depth Driller 1357'

Depth Logger 1343'

Bottom Logged Interval 1342'

Top Log Interval SURFACE

Open Hole Size WATER

Type Fluid

Density / Viscosity

Max. Recorded Temp. ---

Estimated Cement Top SURFACE

Time Well Ready ---

Time Logger on Bottom ---

Equipment Number 3

Location DEWEY

Recorded By HERREN

Witnessed By MR JONES

Borehole Record				Tubing Record			
Run Number	Bit	From	To	Size	Weight	From	To

Casing Record Size 8 5/8" Wgt/Ft Top SURFACE Bottom 43'

Surface String

Prot String

Production String 4.5" SURFACE TD

Liner

<<< Fold Here >>>

All interpretations are opinions based on inferences from electrical or other measurements and we cannot and do not guarantee the accuracy or correctness of any interpretation, and we shall not, except in the case of gross or willful negligence on our part, be liable or responsible for any loss costs, damages, or expenses incurred or sustained by anyone resulting from any interpretation made by any of our officers, agents or employees. The interpretations are also subject to our general terms and conditions set out in our current Price Schedule.

Comments

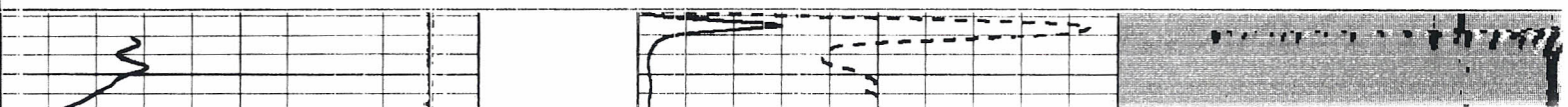


Green Country Wireline

GAMMA RAY CEMENT BOND

Database File: thom364.db
Dataset Pathname: thom364/run1/pass1
Presentation Format: cbl_dr
Dataset Creation: Tue Nov 29 15:33:41 2011 by Log Std Casedhole 09061
Charted by: Depth in Feet scaled 1:240

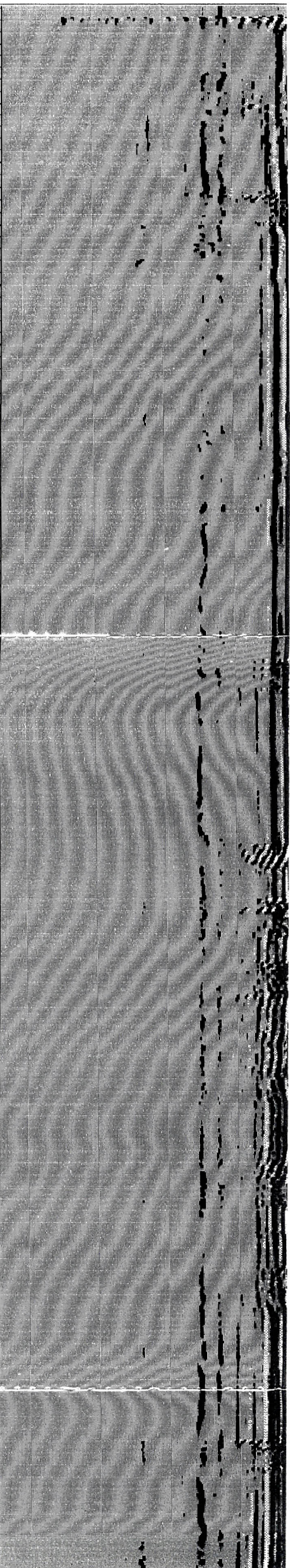
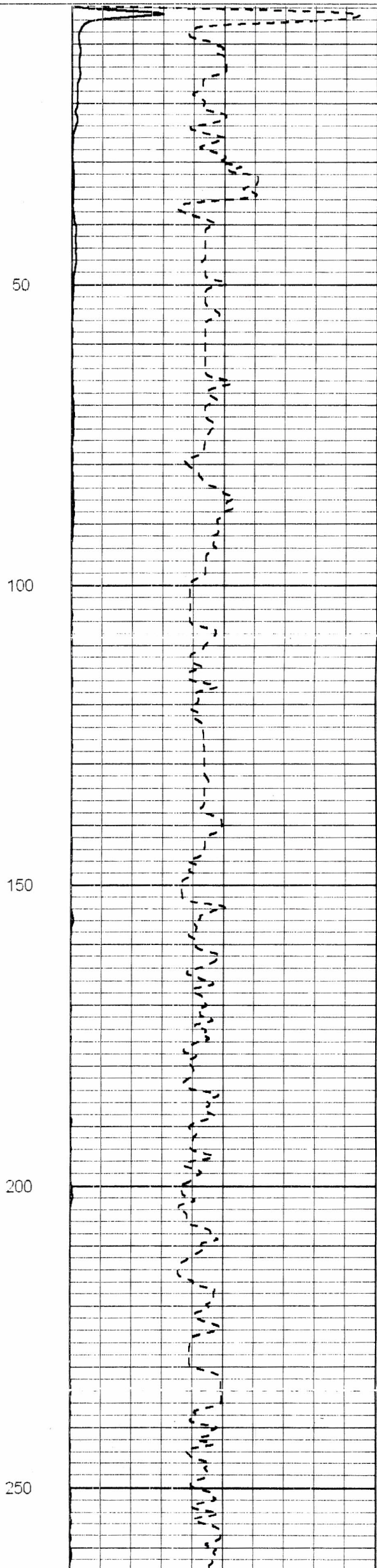
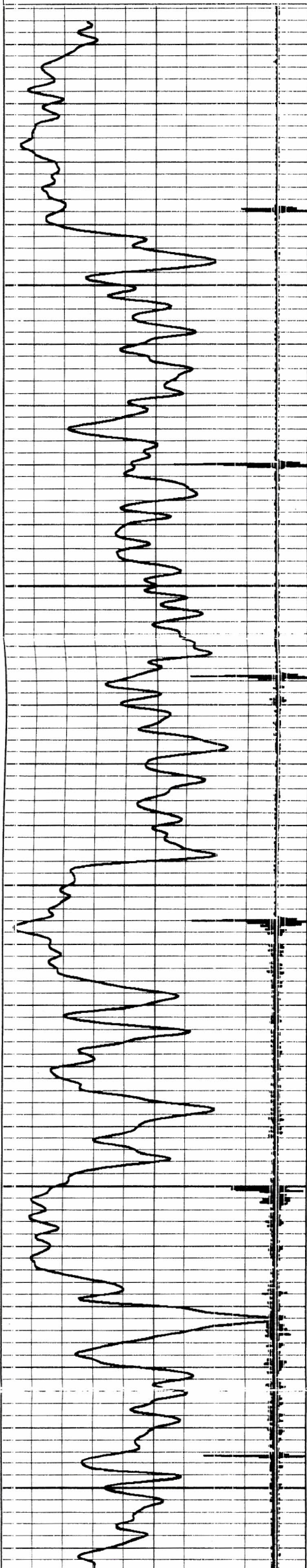
9	Collar Locator	-1	-1	Amplitude (mV)	90	200	Variable Density	12
0	Gamma Ray (GAPI) (GAPI)	60	1000	Travel Time (usec)	250			

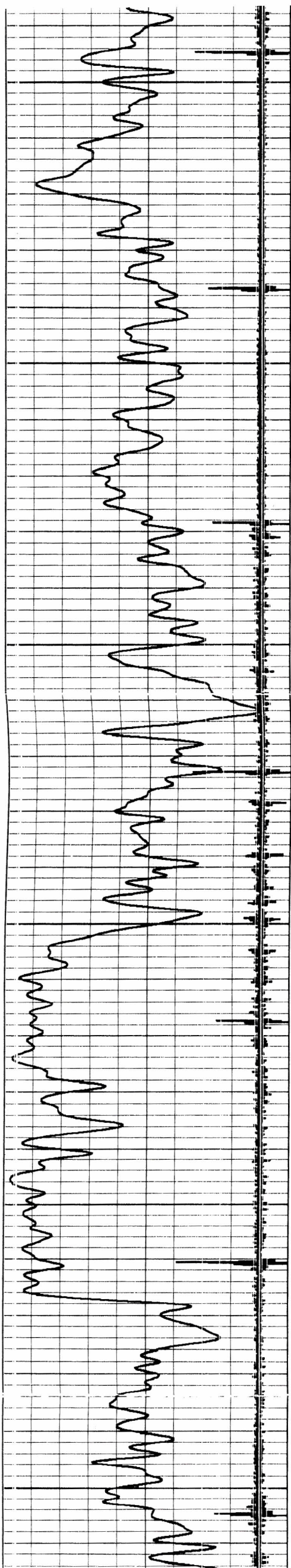


9 Collar Locator -1
0 Gamma Ray (GAPI) (GAPI) 60

-1 Amplitude (mV) 90
1000 Travel Time (usec) 250

200 Variable Density 12





250

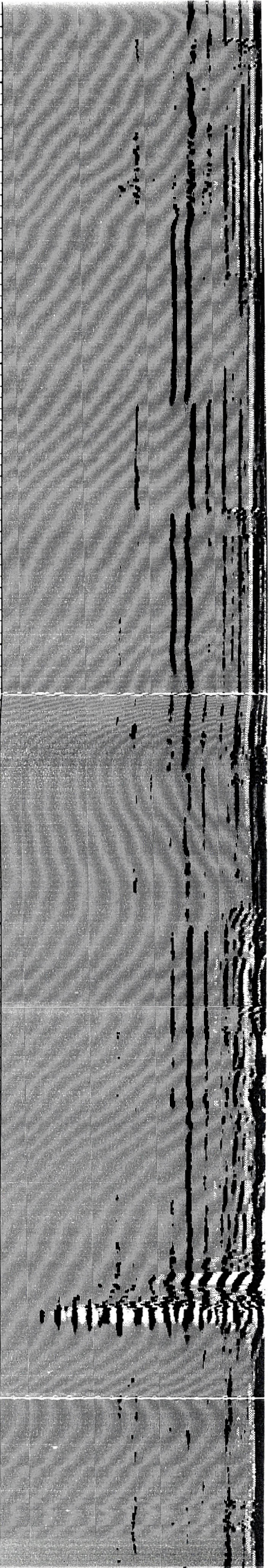
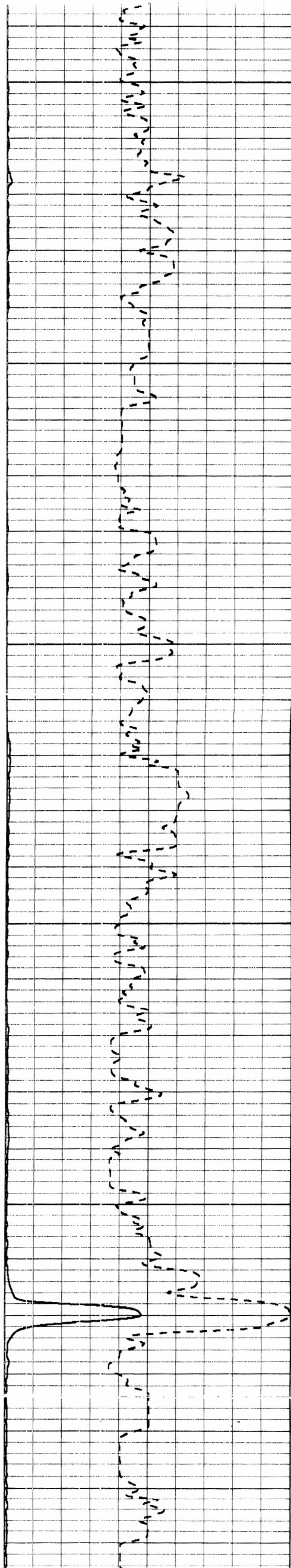
300

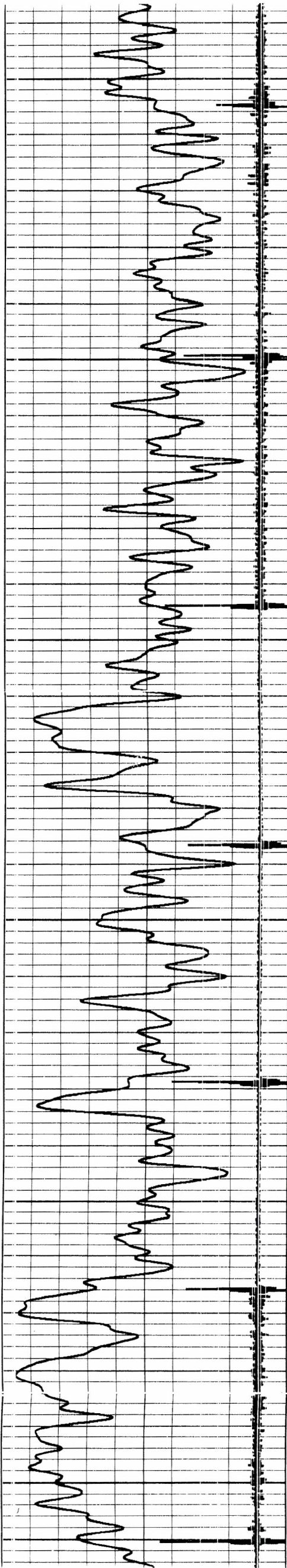
350

400

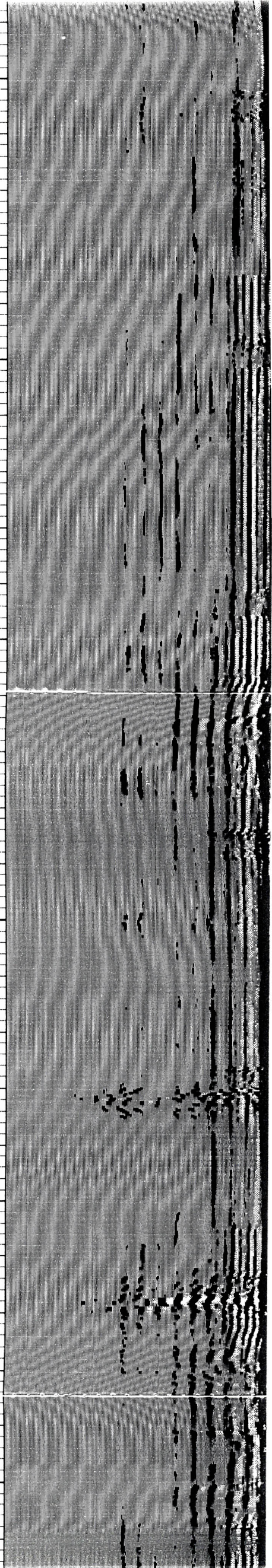
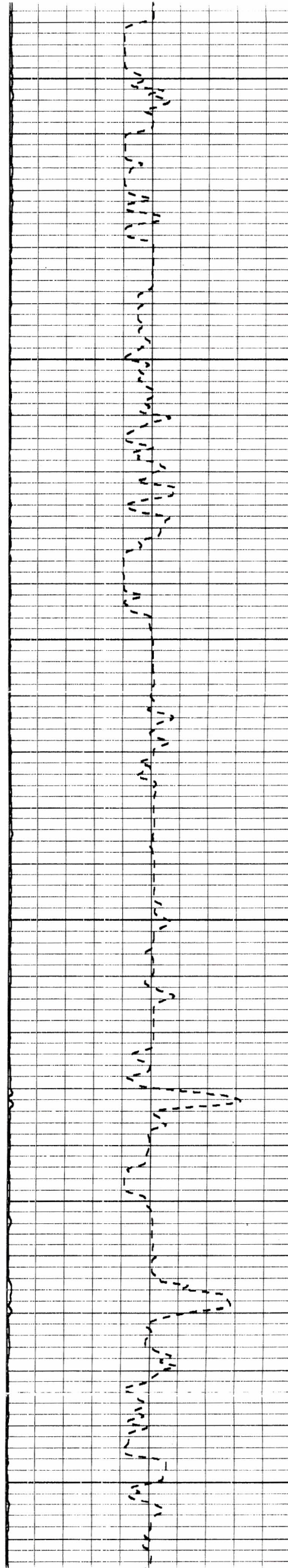
450

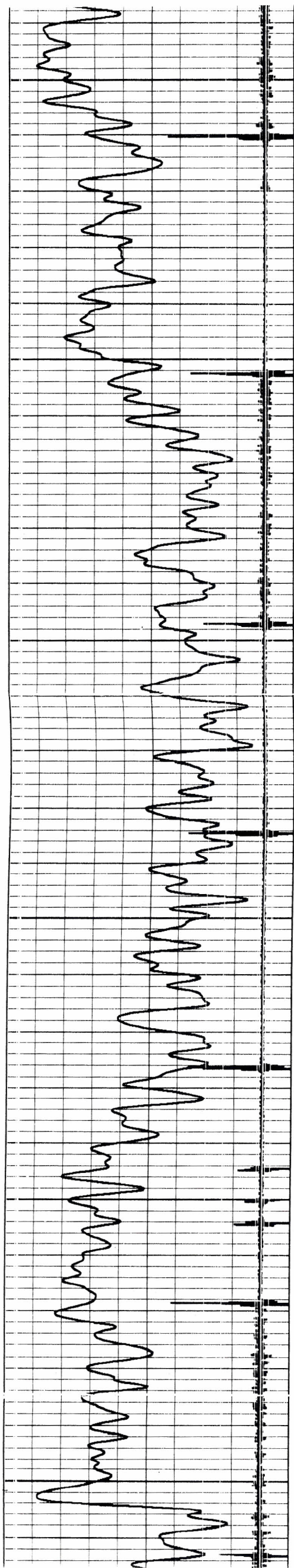
500





500
550
600
650
700
750





750

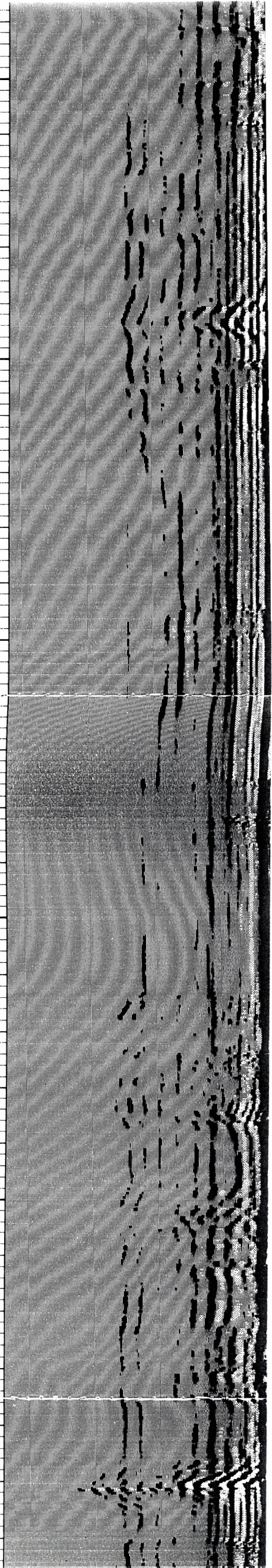
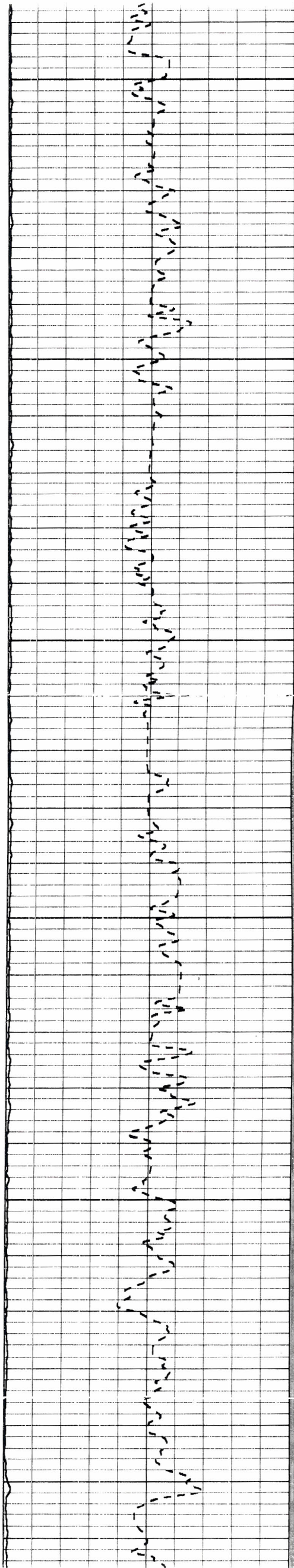
800

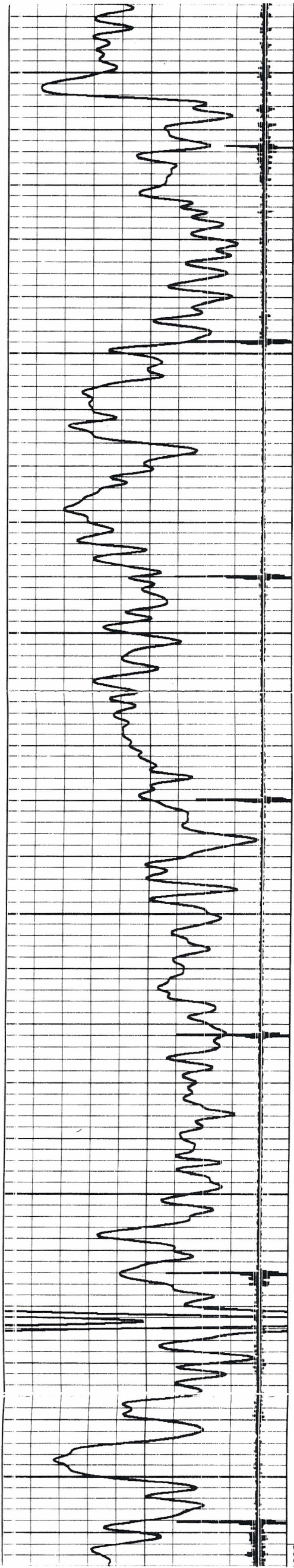
850

900

950

1000





1000

1050

1100

1150

1200

1250

