

MIDWEST SURVEYS
 LOGGING - PERFORATING - CONSULTING SERVICES
 P.O. Box 68, Osawatomie, KS 66064
 913 / 735 - 2128

GAMMA RAY / NEUTRON / CCL

API # 15-107-24,544

File No.

Company Bobcat Oilfield Services, Inc.

Well North Baker No. A-5

Field Cadmus / LaCygne

County Linn State Kansas

Location 2620' FSL & 3960' FEL
N/2-N/2-N/2

Sec. 5 Twp. 20S Rge. 23E
 Permanent Datum GL Elevation NA
 Log Measured From GL
 Drilling Measured From GL

Other Services Perforate
 Elevation K.B. NA
 D.F. NA
 G.L. NA

Date 10-04-2011

Run Number One

Depth Driller 335.0

Depth Logger 329.5

Bottom Logged Interval 328.5

Top Log Interval 20.0

Fluid Level Full

Type Fluid Water

Density / Viscosity NA

Salinity - PPM Cl NA

Max Recorded Temp NA

Estimated Cement Top 0.0

Equipment No. 104 Location Osawatomie

Recorded By Gary Windisch

Witnessed By Bob Eberhart

BORE-HOLE RECORD				CASING RECORD			
Run	BIT	FROM	TO	SIZE	WGT.	FROM	TO
One	8.75"	0.0	20.0	6.00"	0.0	0.0	20.0
Two	5.825"	20.0	335.0	2.875"	0.0	0.0	330.0

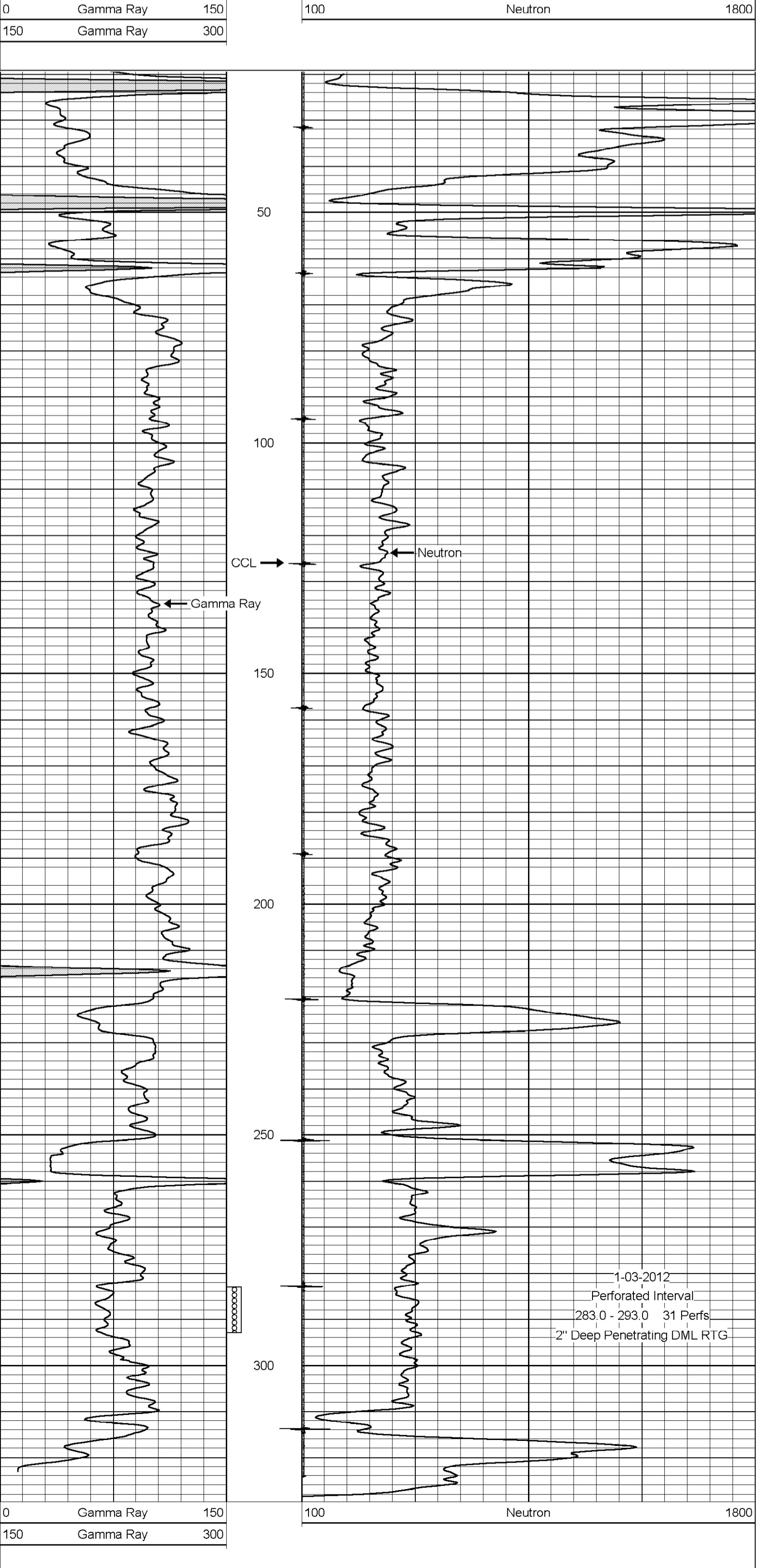
<<< Fold Here >>>

All interpretations are opinions based on inferences from electrical or other measurements and we cannot and do not guarantee the accuracy or correctness of any interpretation, and we shall not, except in the case of gross or willful negligence on our part, be liable or responsible for any loss, costs, damages, or expenses incurred or sustained by anyone resulting from any interpretation made by any of our officers, agents or employees. These interpretations are also subject to our general terms and conditions set out in our current Price Schedule.

Comments

Drilling Contractor :
 Dale Jackson Production Company

Database File: bark5an.db
 Dataset Pathname: pass1
 Presentation Format: gr-n-ccl
 Dataset Creation: Tue Oct 04 07:38:51 2011 by Log Warrior Version 6.6
 Charted by: Depth in Feet scaled 1:240



Gamma Ray	Scale
0	150
150	300

Neutron	Scale
100	1800