



MIDWEST SURVEYS
 LOGGING - PERFORATING - CONSULTING SERVICES
 P.O. Box 68, Osawatimie, KS 66064
 913 / 755 - 2128

GAMMA RAY / NEUTRON / CCL

API # 15-107-24.423

File No.

Company Bobcat Oilfield Services, Inc.

Well South Baker No. M-8

Field Cadmus / LaCygne

County Linn State Kansas

Location 660' FSL & 2970' FEL
E/2-SE-SW

Other Services
Perforate

Sec. 5 Twp. 20S Rge. 23E

Permanent Datum GL Elevation NA
 Log Measured From GL
 Drilling Measured From GL

Elevation
K.B. NA
D.F. NA
G.L. NA

Date 09-23-2011

Run Number One

Depth Driller 300.0

Depth Logger 294.5

Bottom Logged Interval 292.5

Top Log Interval 20.0

Fluid Level Full

Type Fluid Water

Density / Viscosity NA

Salinity - PPM Cl NA

Max Recorded Temp NA

Estimated Cement Top 0.0

Equipment No. 104 Location Osawatimie

Recorded By Gary Windisch

Witnessed By Bob Eberhart

RUN BORE-HOLE RECORD

No. BIT FROM TO SIZE WGT. FROM TO

One 8.75" 0.0 20.0 6.00" 0.0 20.0

Two 5.625" 20.0 300.0 2.875" 0.0 295.0

CASING RECORD

<<< Fold Here >>>

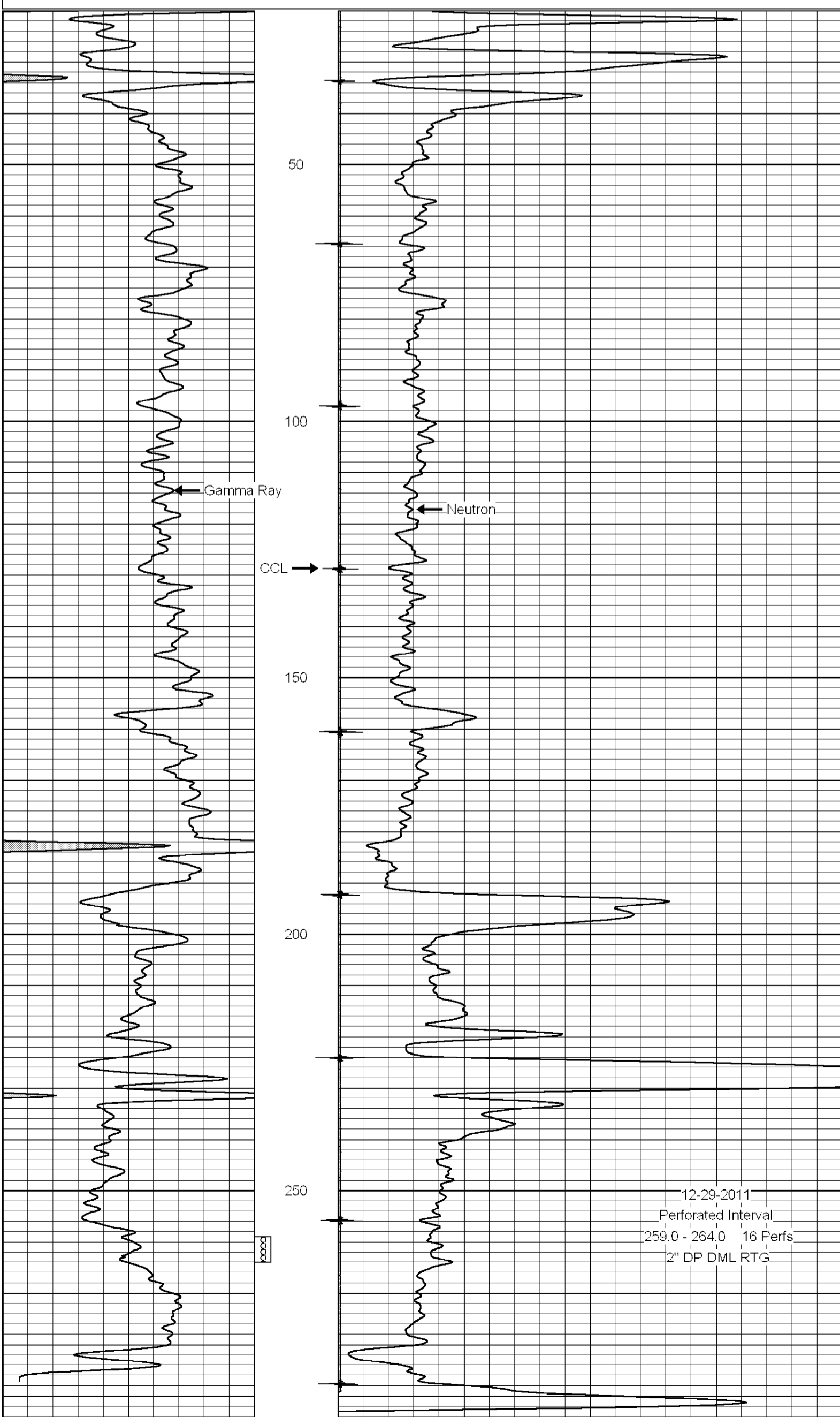
All interpretations are opinions based on inferences from electrical or other measurements and we cannot and do not guarantee the accuracy or correctness of any interpretation, and we shall not, except in the case of gross or willful negligence on our part, be liable or responsible for any loss, costs, damages, or expenses incurred or sustained by anyone resulting from any interpretation made by any of our officers, agents or employees. These interpretations are also subject to our general terms and conditions set out in our current Price Schedule.

Comments

Drilling Contractor :
Dale Jackson Production Company

Database File: bakr8ms.db
 Dataset Pathname: pass1
 Presentation Format: gr-n-ccl
 Dataset Creation: Tue Aug 23 14:51:16 2011 by Log Warrior Version 6.6
 Charted by: Depth in Feet scaled 1:240

0	Gamma Ray	150	100	Neutron	1800
150	Gamma Ray	300			



12-29-2011
 Perforated Interval
 259.0 - 264.0 16 Perfs
 2" DP DML RTG

0	Gamma Ray	150	100	Neutron	1800
150	Gamma Ray	300			