



**Borehole Compensated
Sonic Log**

DIGITAL LOG (785) 625-3858

15-063-21,954-00-00

API No. _____
 Company **Questa Energy Corporation**
 Well **Tustin No. 1-4**
 Field **Wildcat**
 County **Gove** State **Kansas**
 Location **SE NW SE SW
753' FSL & 1815' FWL**
 Sec: **4** Twp: **14 S** Rge: **28 W**

Other Services
 CNL/CDL
 MEL/DIL
 Elevation
 K.B. 2583
 D.F. _____
 G.L. 2578

Permanent Datum Ground Level Elevation 2578
 Log Measured From Kelly Bushing 5 Ft. Above Perm. Datum
 Drilling Measured From Kelly Bushing

Date	11/28/2011
Run Number	Two
Type Log	BHC Sonic
Depth Driller	4420
Depth Logger	4424
Bottom Logged Interval	4413
Top Logged Interval	200
Type Fluid In Hole	Chemical
Salinity, PPM CL	3400
Density	9.4
Level	Full
Max. Rec. Temp. F	120
Operating Rig Time	4 1/2 Hours
Equipment -- Location	17 Hays
Recorded By	D. Martin
Witnessed By	Nathan Randolph

Borehole Record		Casing Record					
Run No.	Bit	From	To	Size	Wgt.	From	To
1	12.25	00	220	8.625	24#	00	220
2	7.875	220	4420				

<<< Fold Here >>>

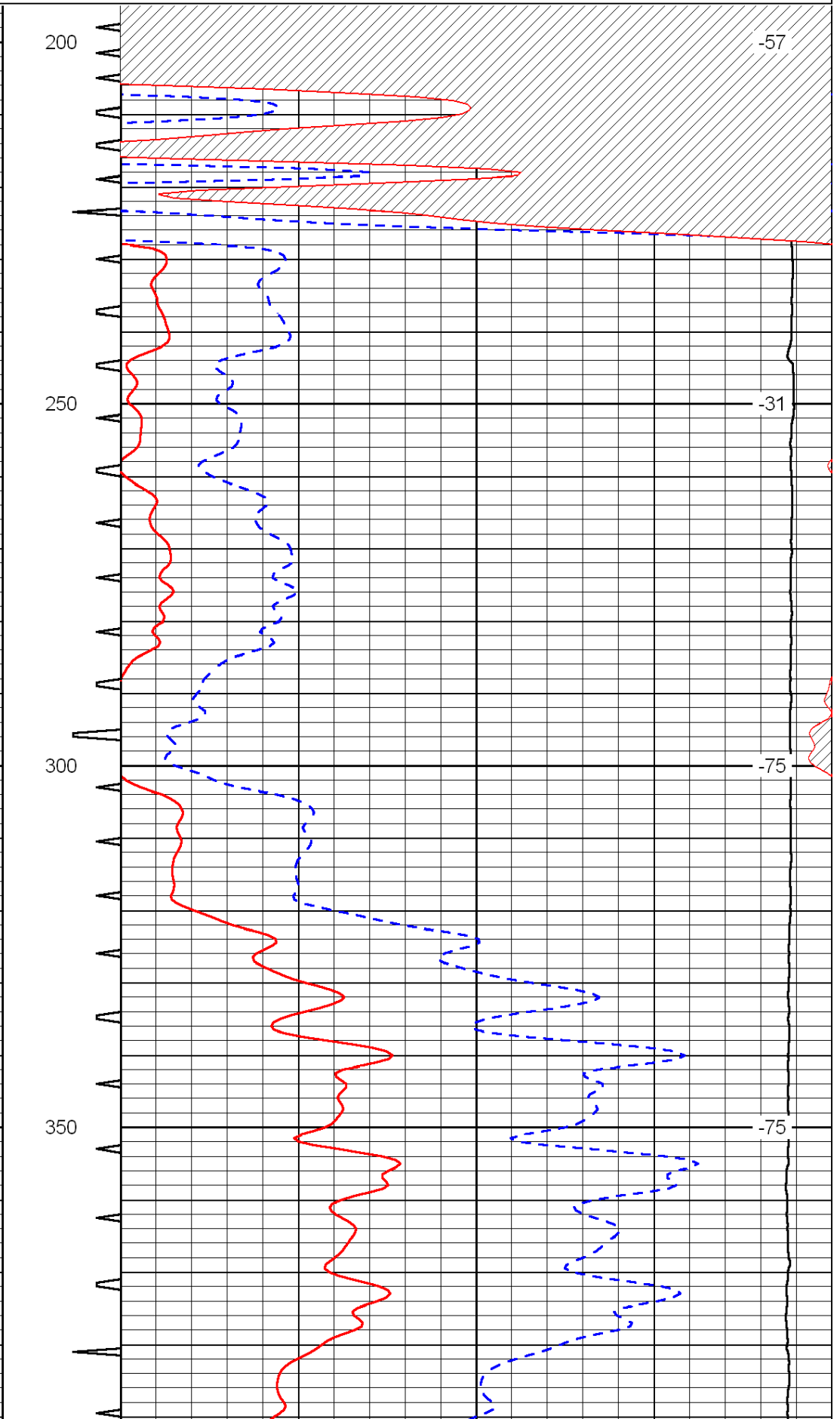
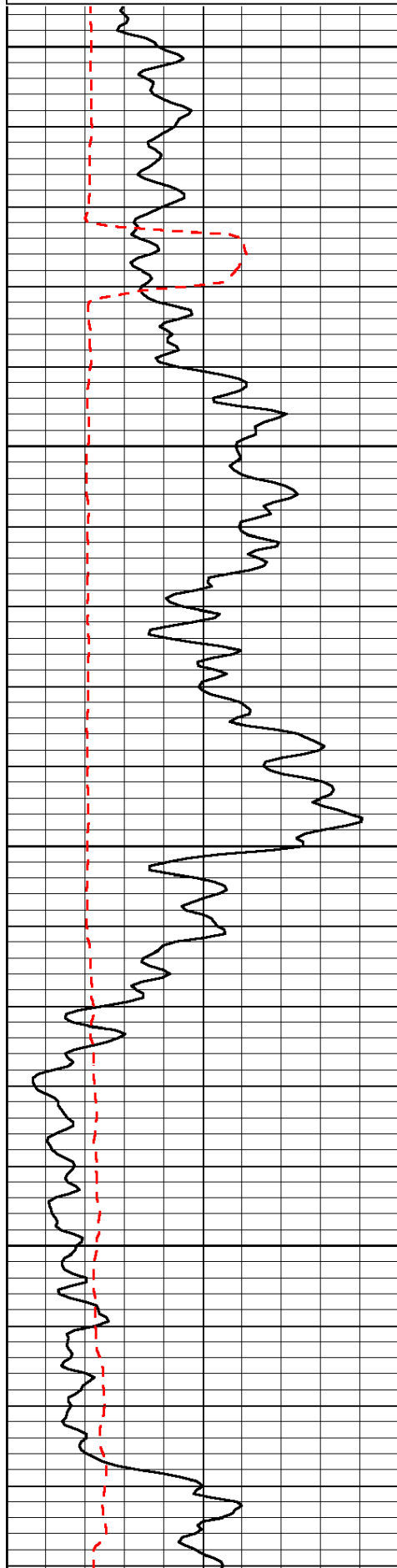
All interpretations are opinions based on inferences from electrical or other measurements and we cannot and do not guarantee the accuracy or correctness of any interpretation, and we shall not, except in the case of gross or willful negligence on our part, be liable or responsible for any loss, costs, damages, or expenses incurred or sustained by anyone resulting from any interpretation made by any of our officers, agents or employees. These interpretations are also subject to our general terms and conditions set out in our current Price Schedule.

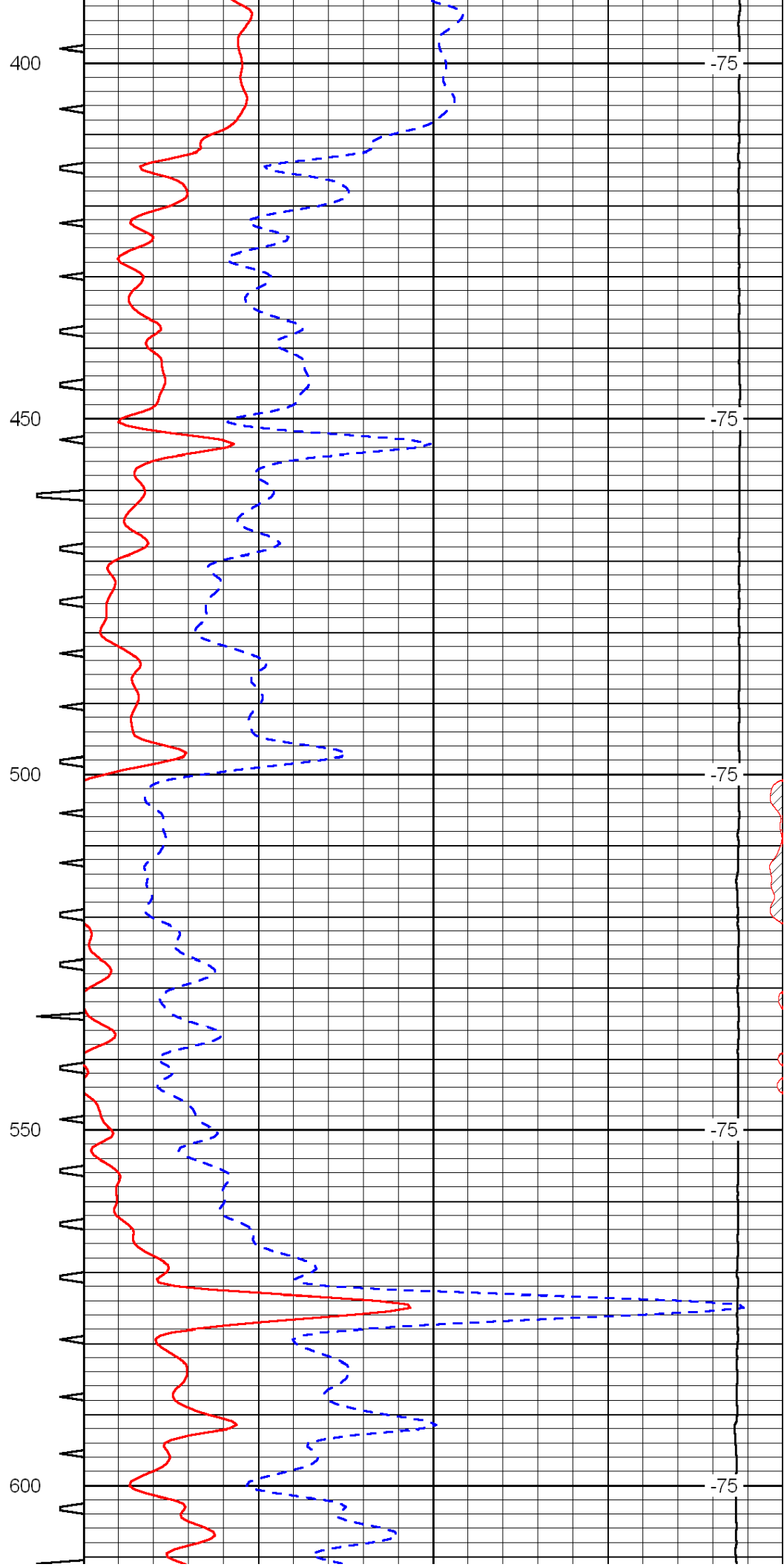
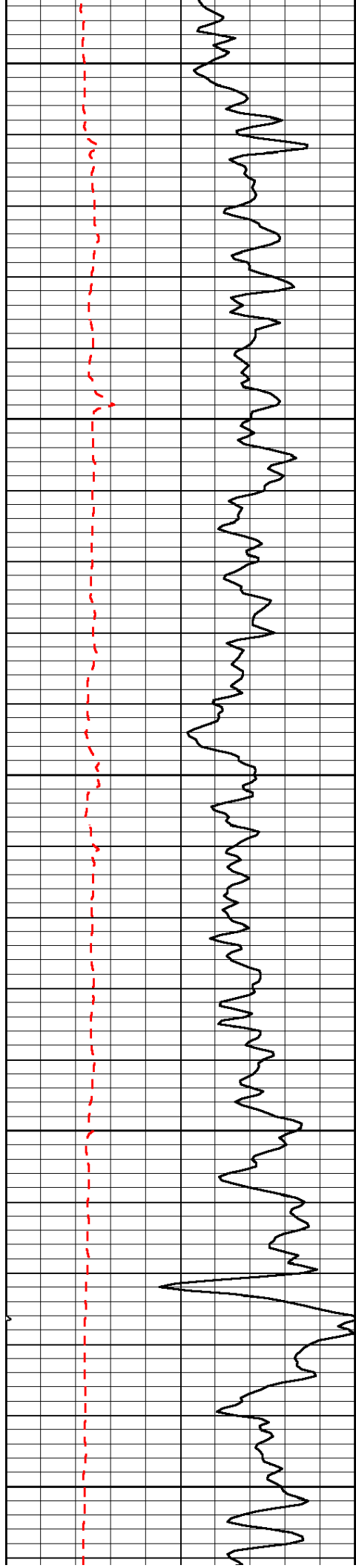
Comments

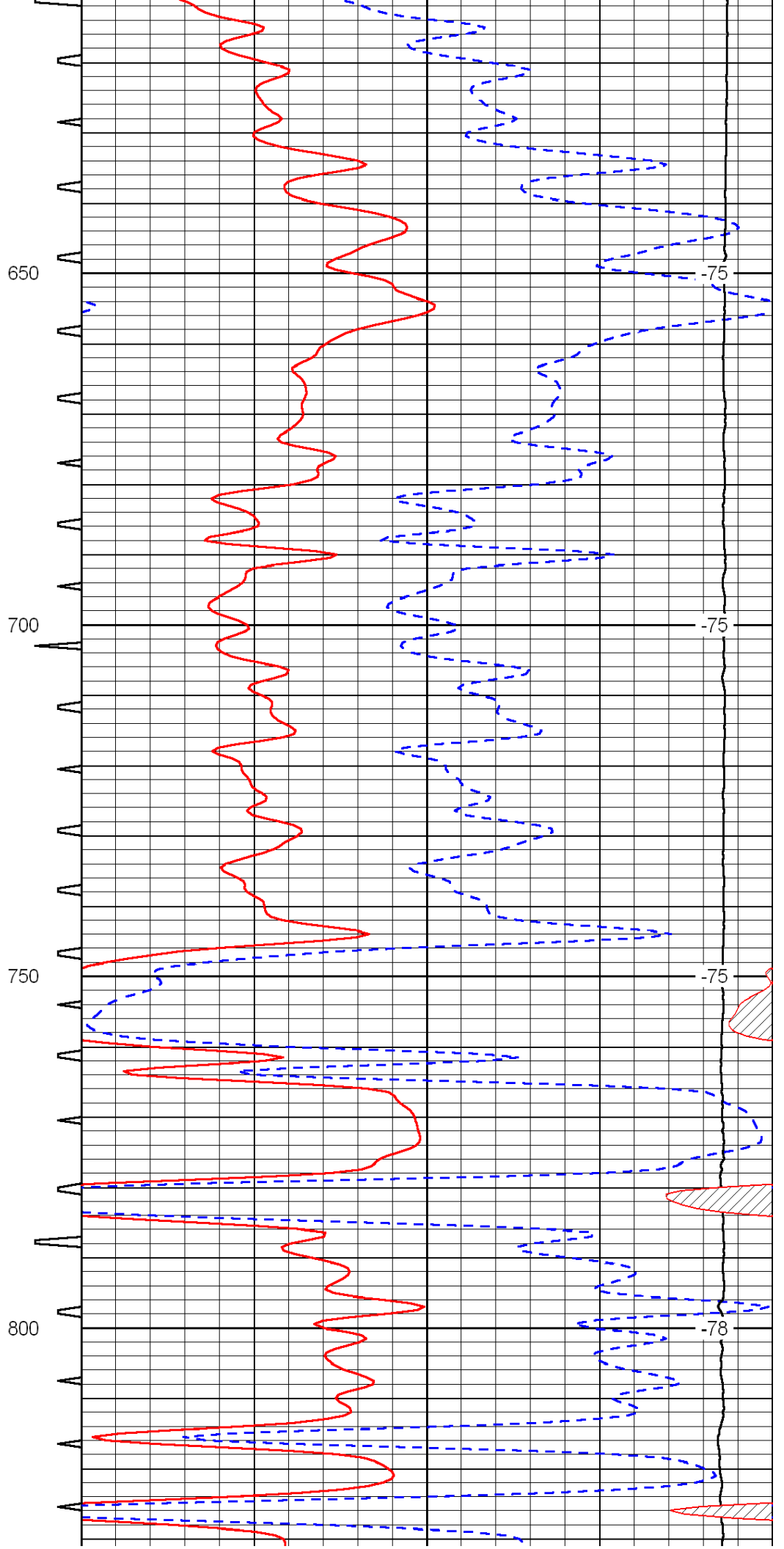
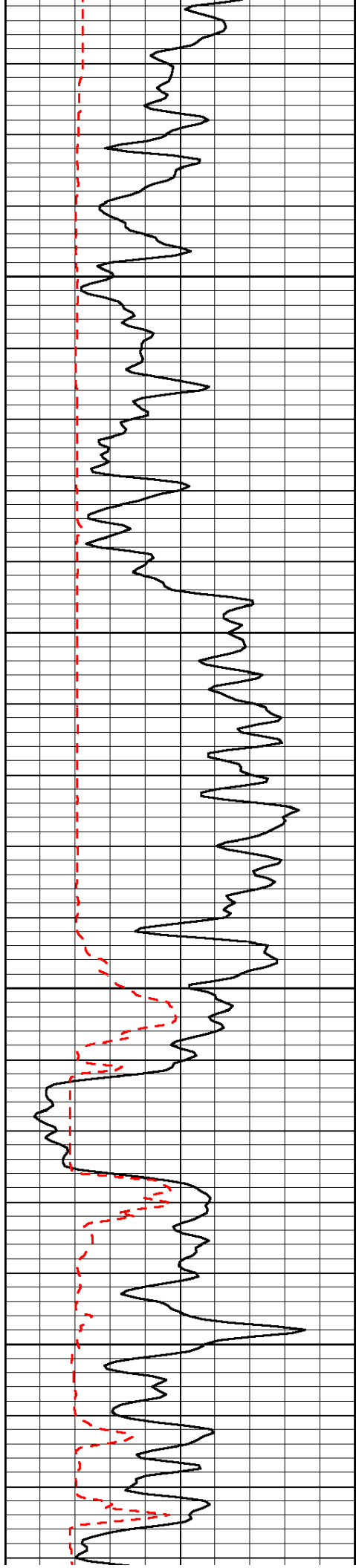
Thank you for using Log-Tech, Inc.
 (785) 625-3858
 Gove, KS
 4 S, 2 E, 1 S, 1 E, 1 S, S Into
 (1 Mile, Passing Next to the Old Tire Feeders)

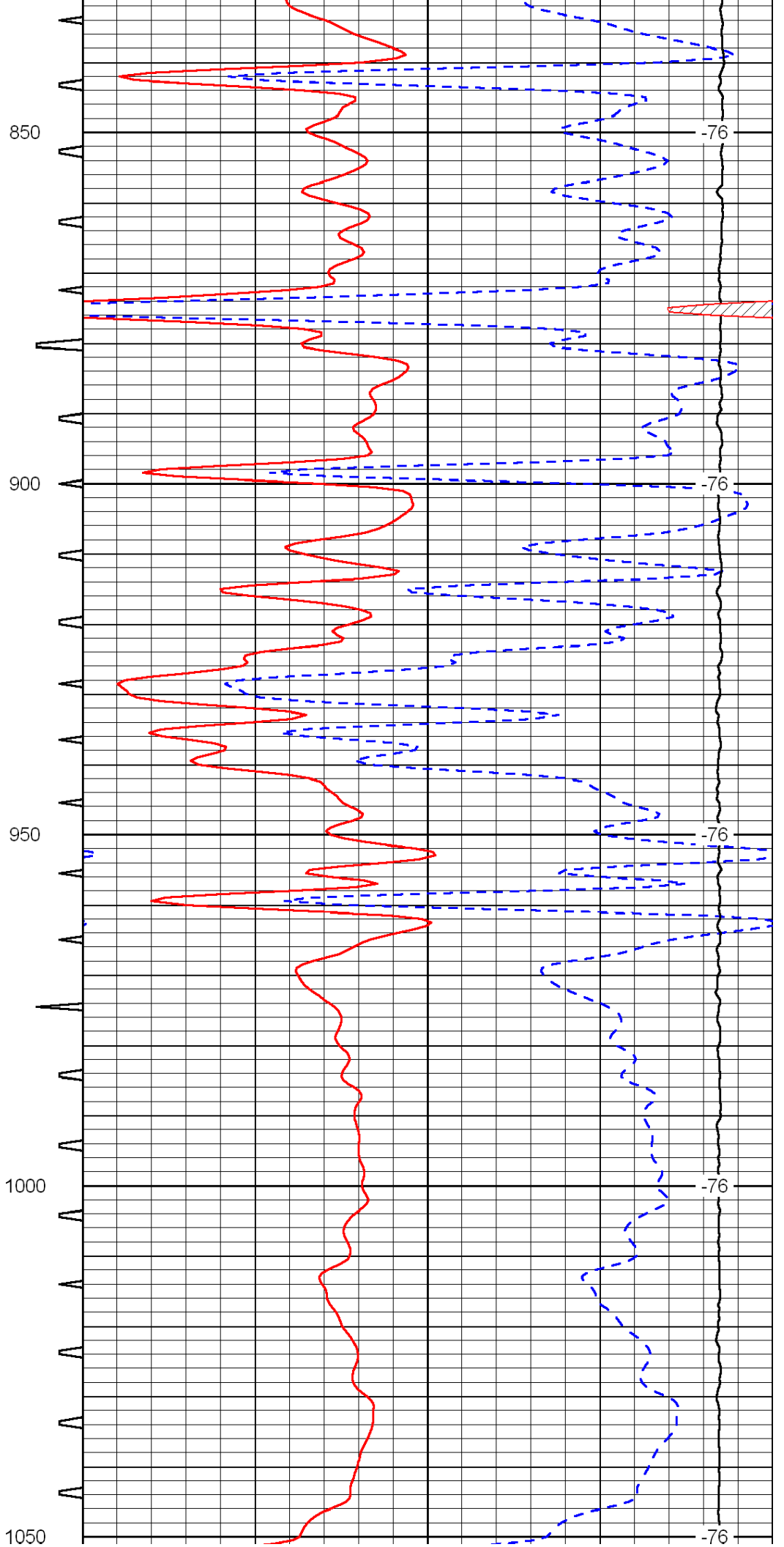
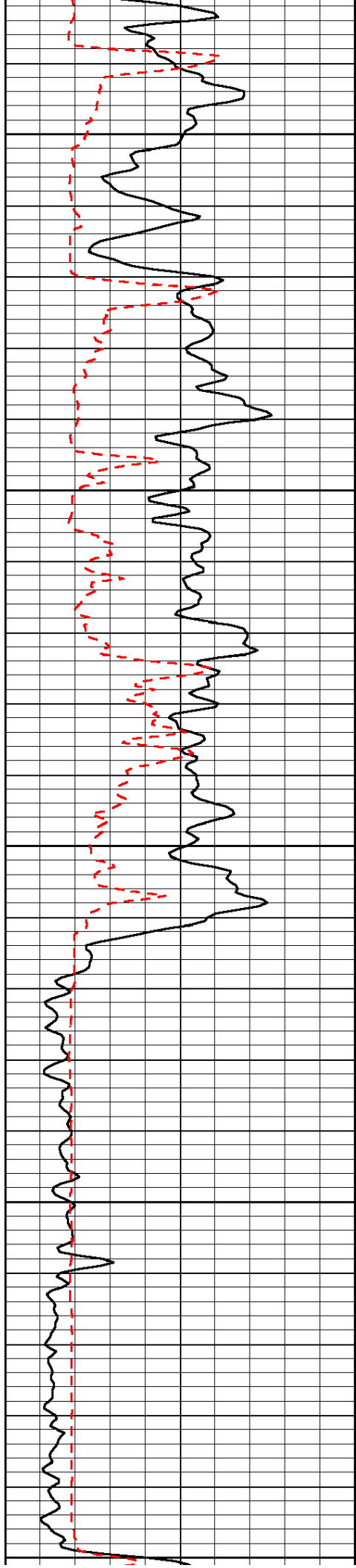
Database File: c:\warrior\data\questa energy_tustin no. 1-4\questahd.db
 Dataset Pathname: DIL/questk
 Presentation Format: sonic
 Dataset Creation: Mon Nov 28 12:44:49 2011
 Charted by: Depth in Feet scaled 1:240

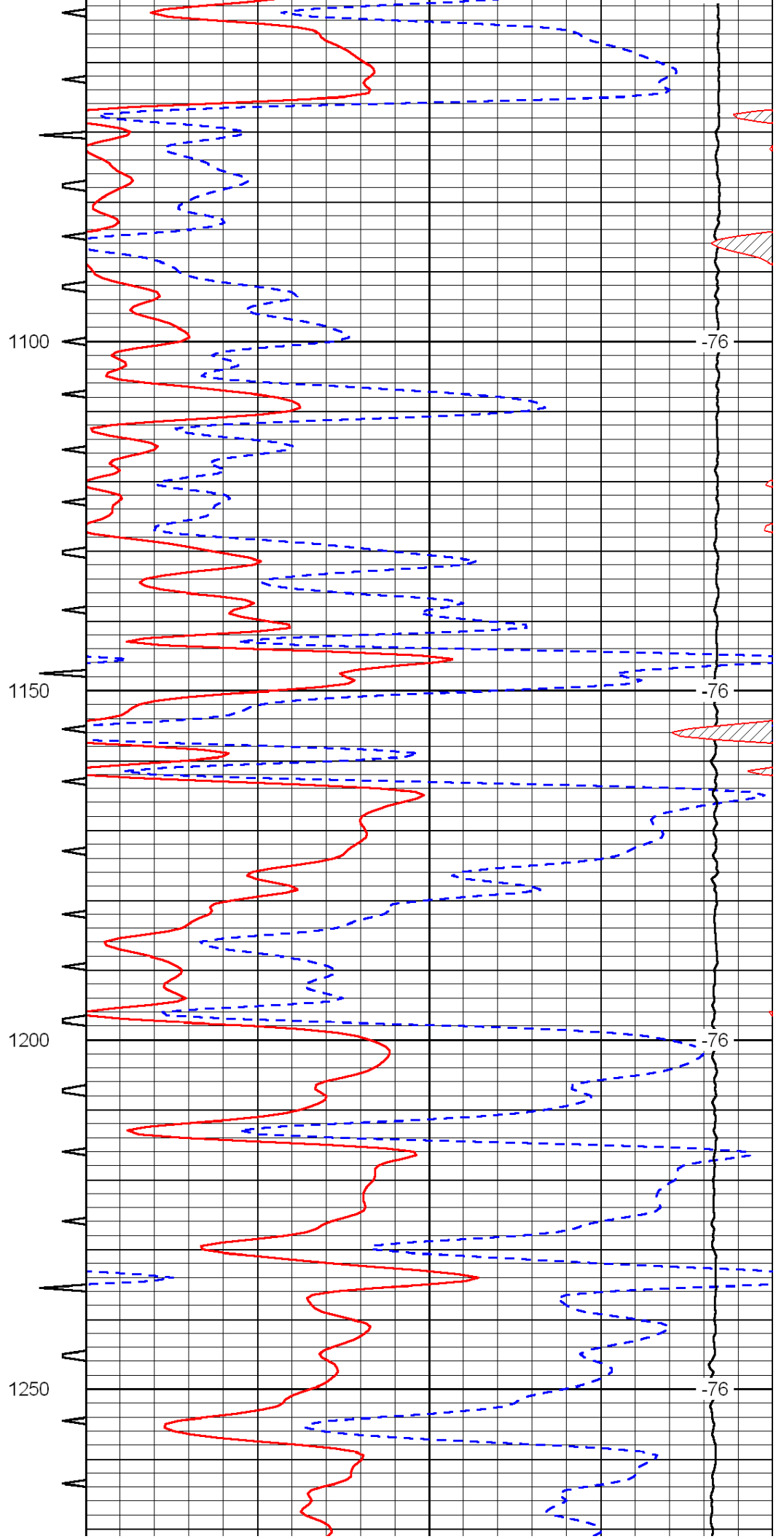
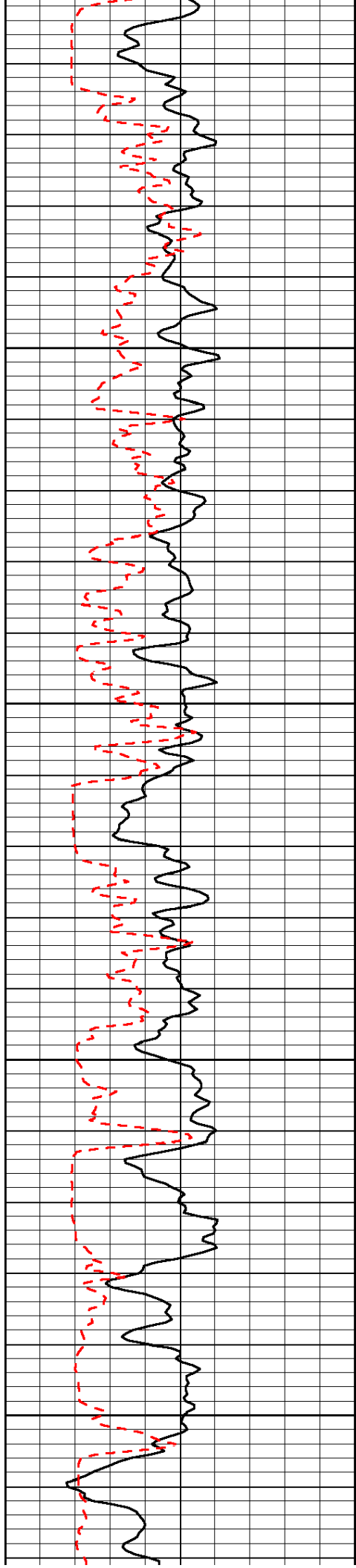
0	Gamma Ray	150	Sonic Int	140	Delta Time (usec/ft)	40
150	Gamma Ray	300	5	0	SPOR	-10
6	Caliper (GAPI)	16		15000	LTEN (lb)	0
						LSPD

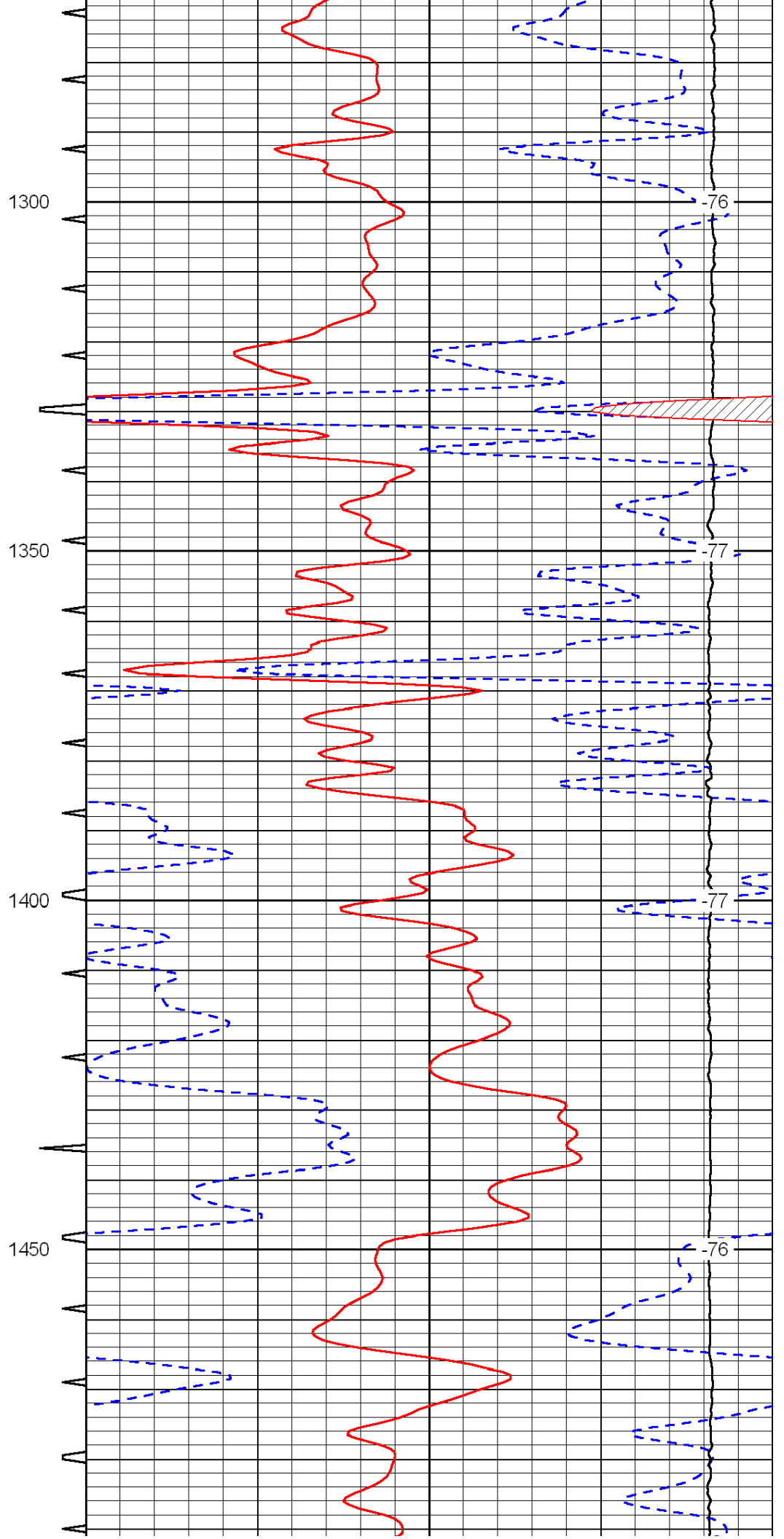
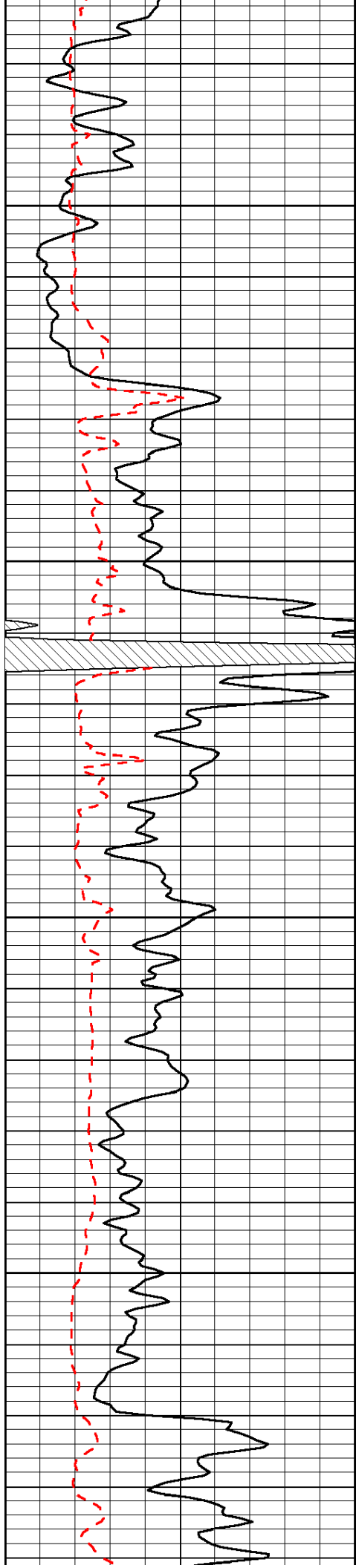


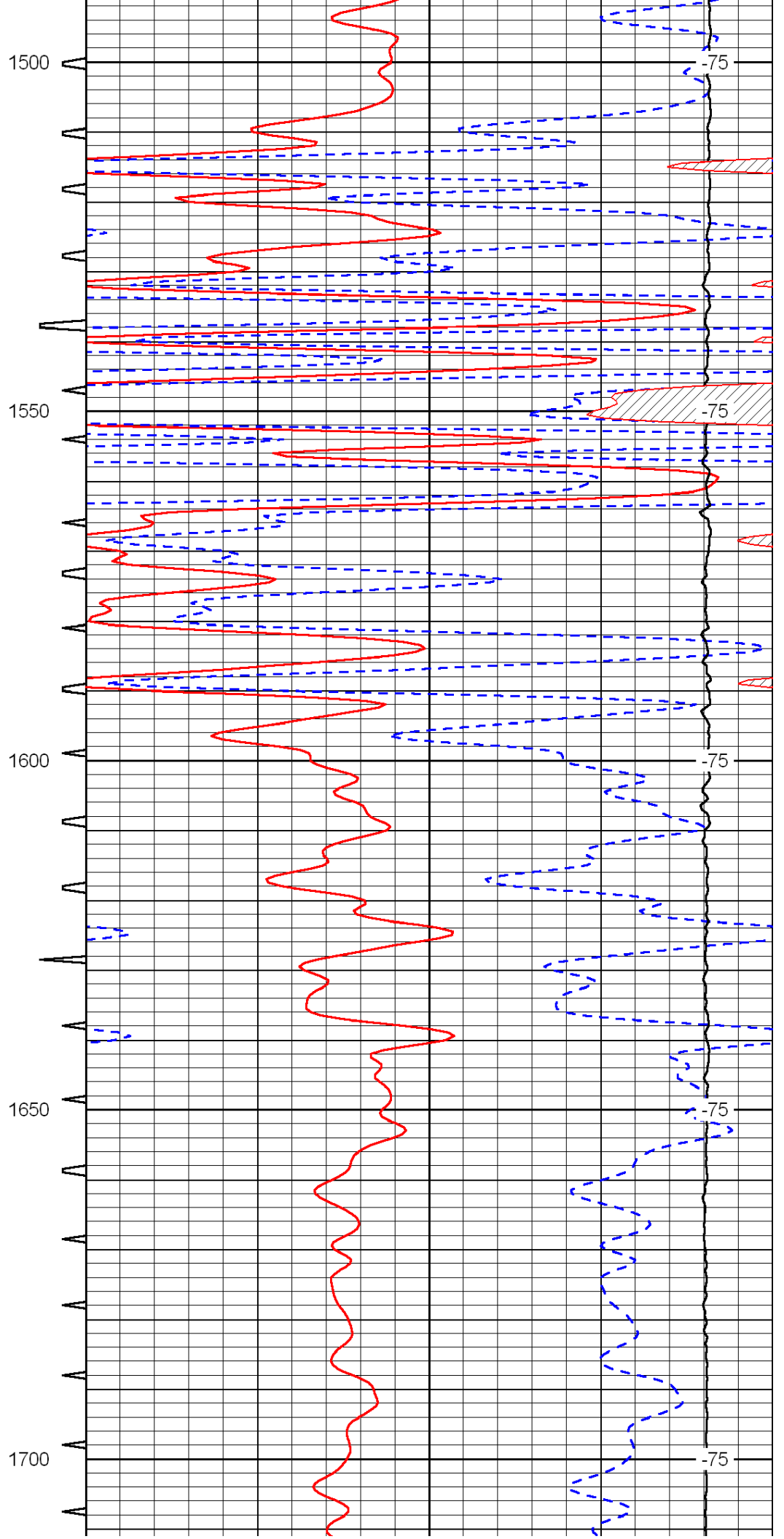
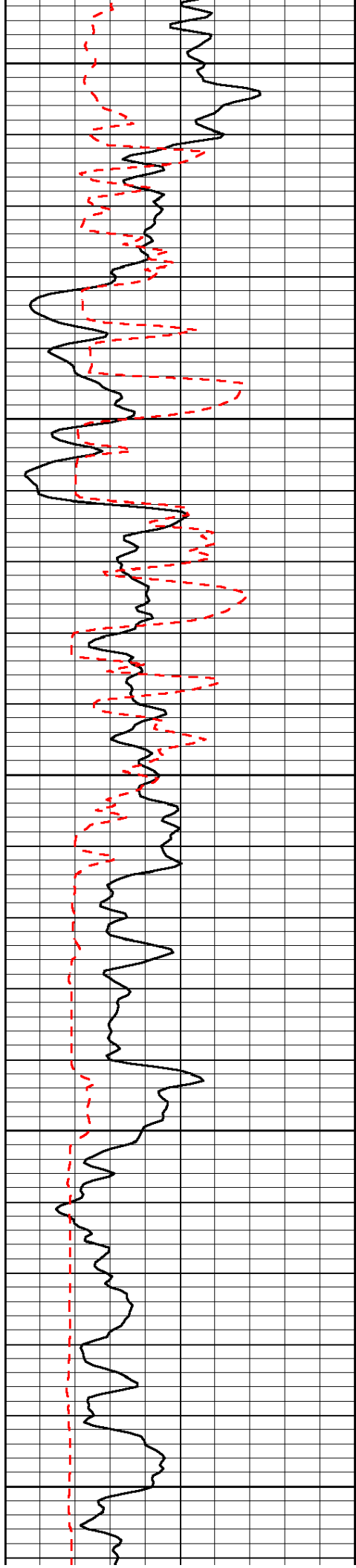


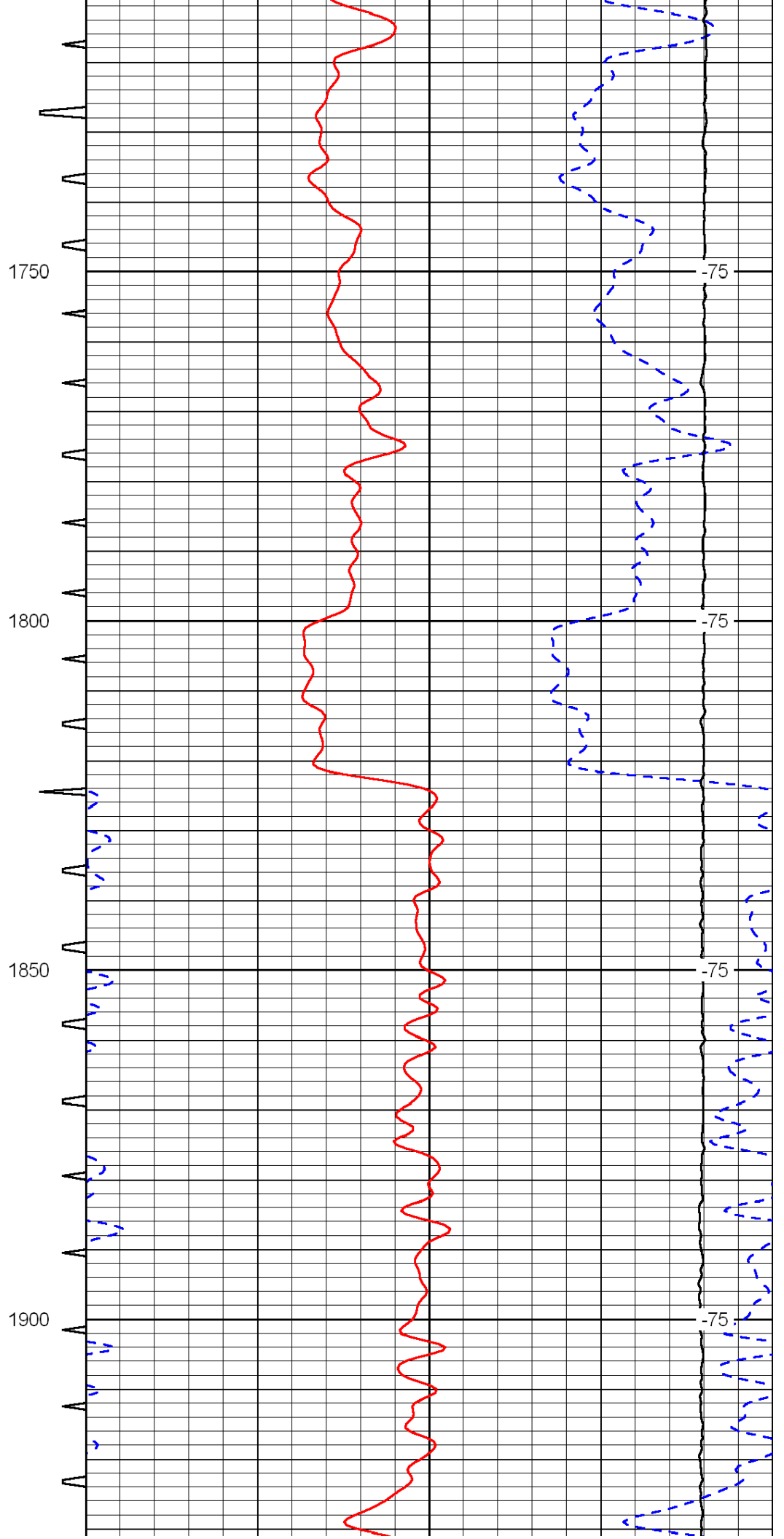
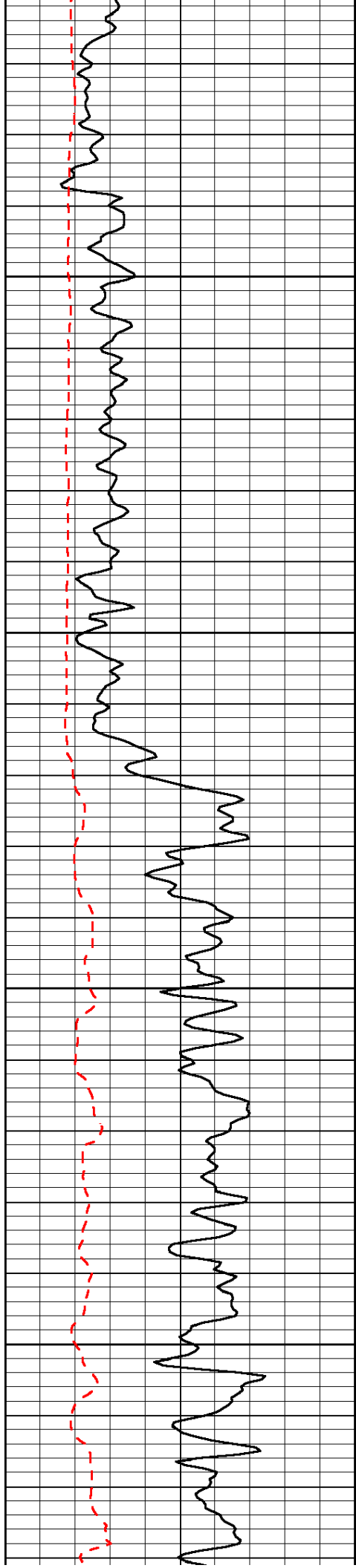


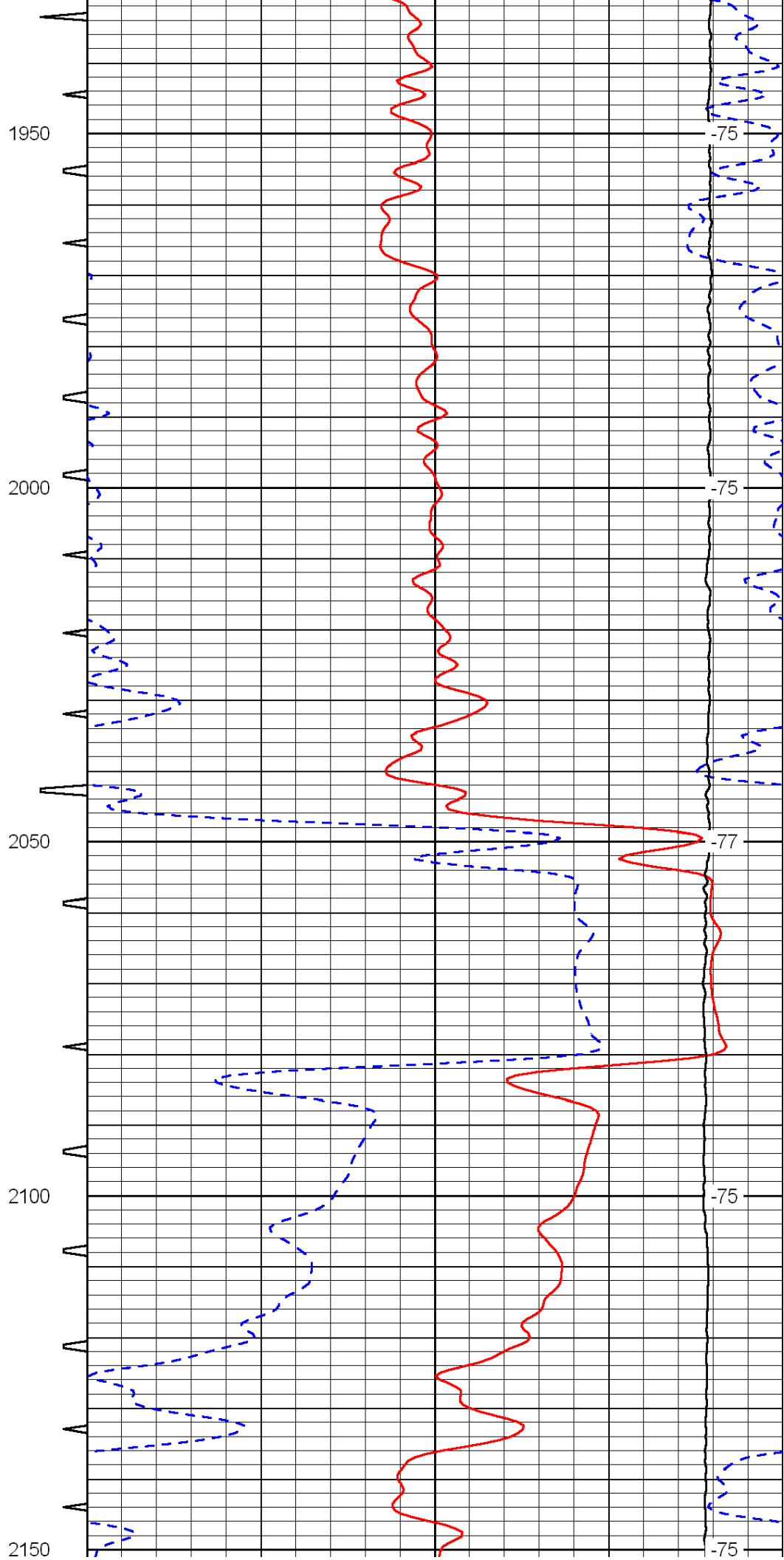
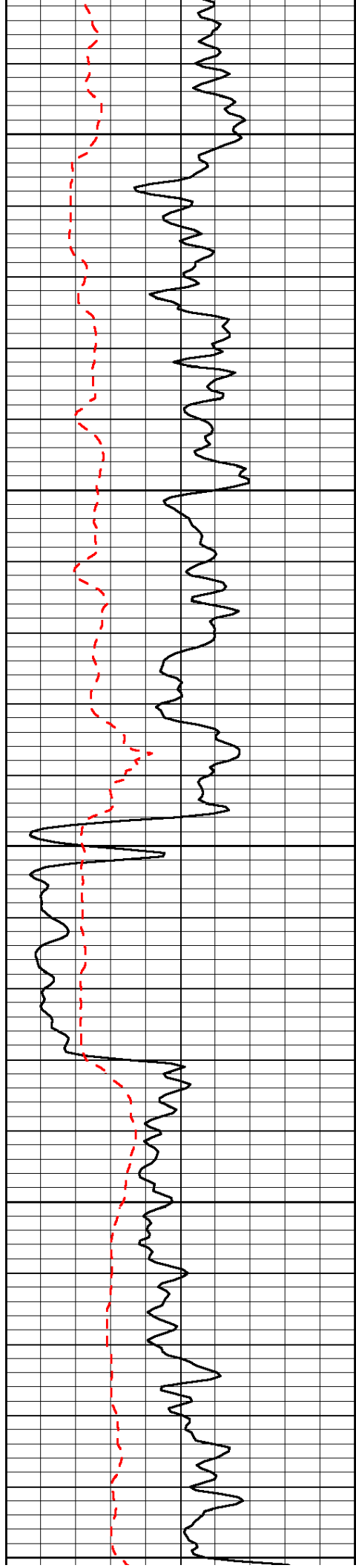


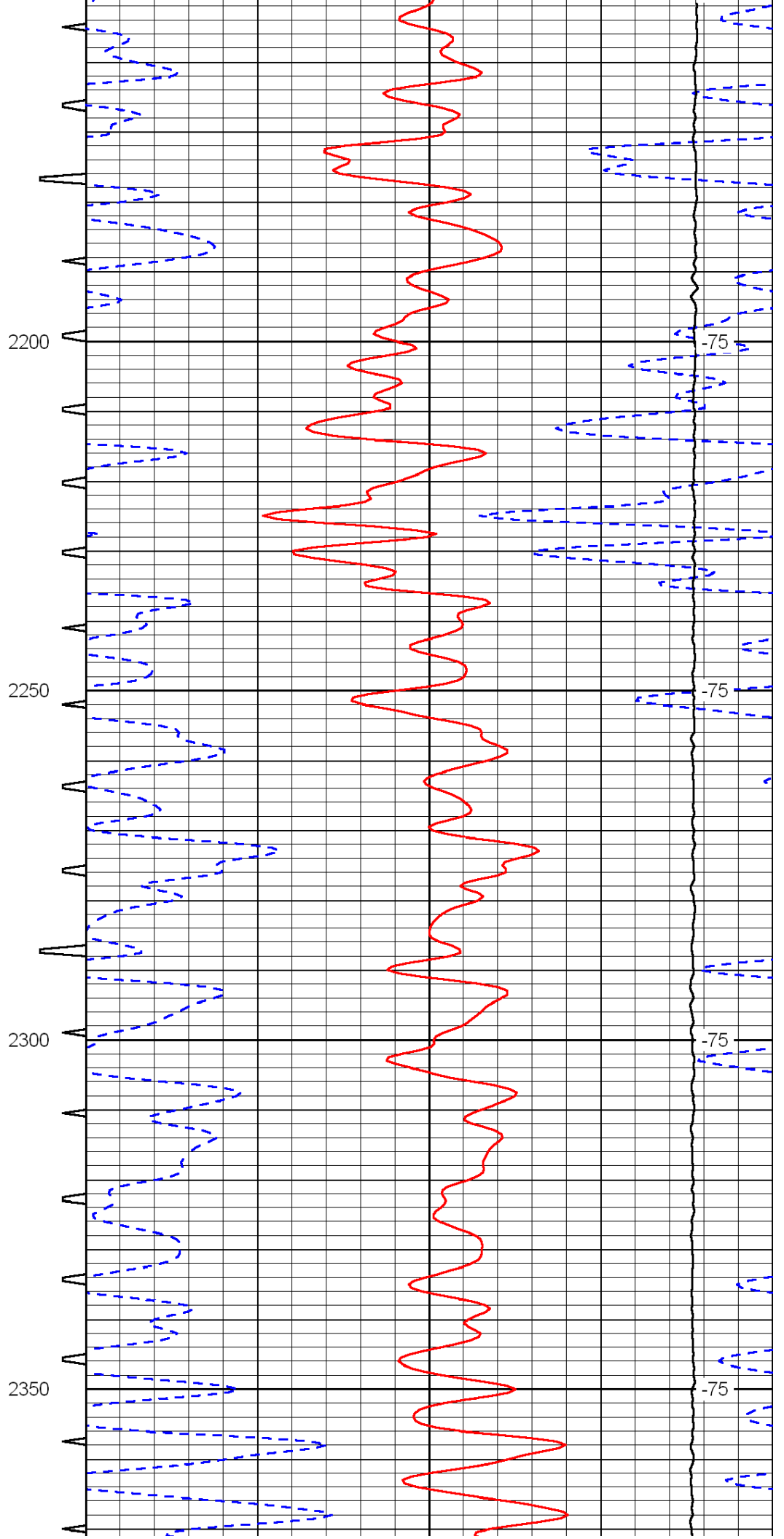
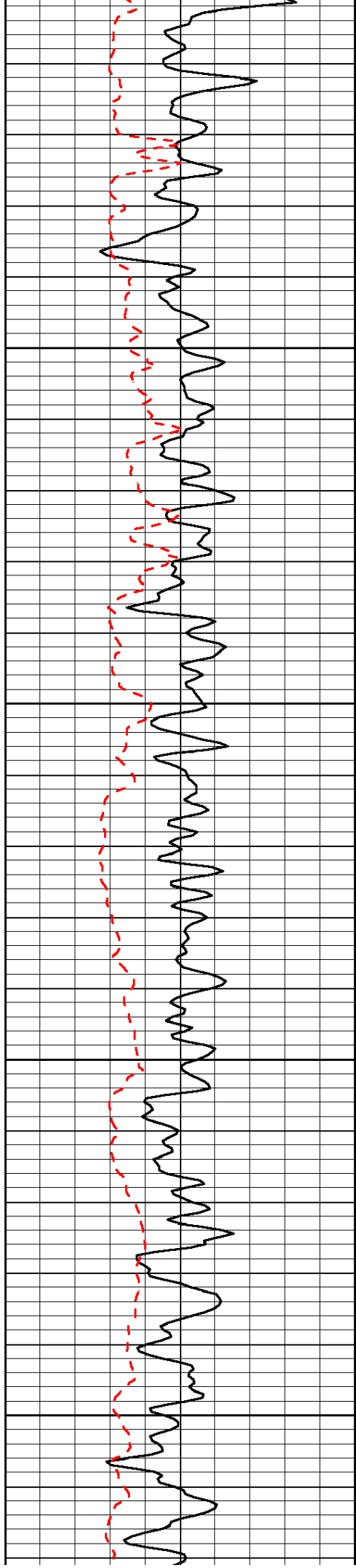


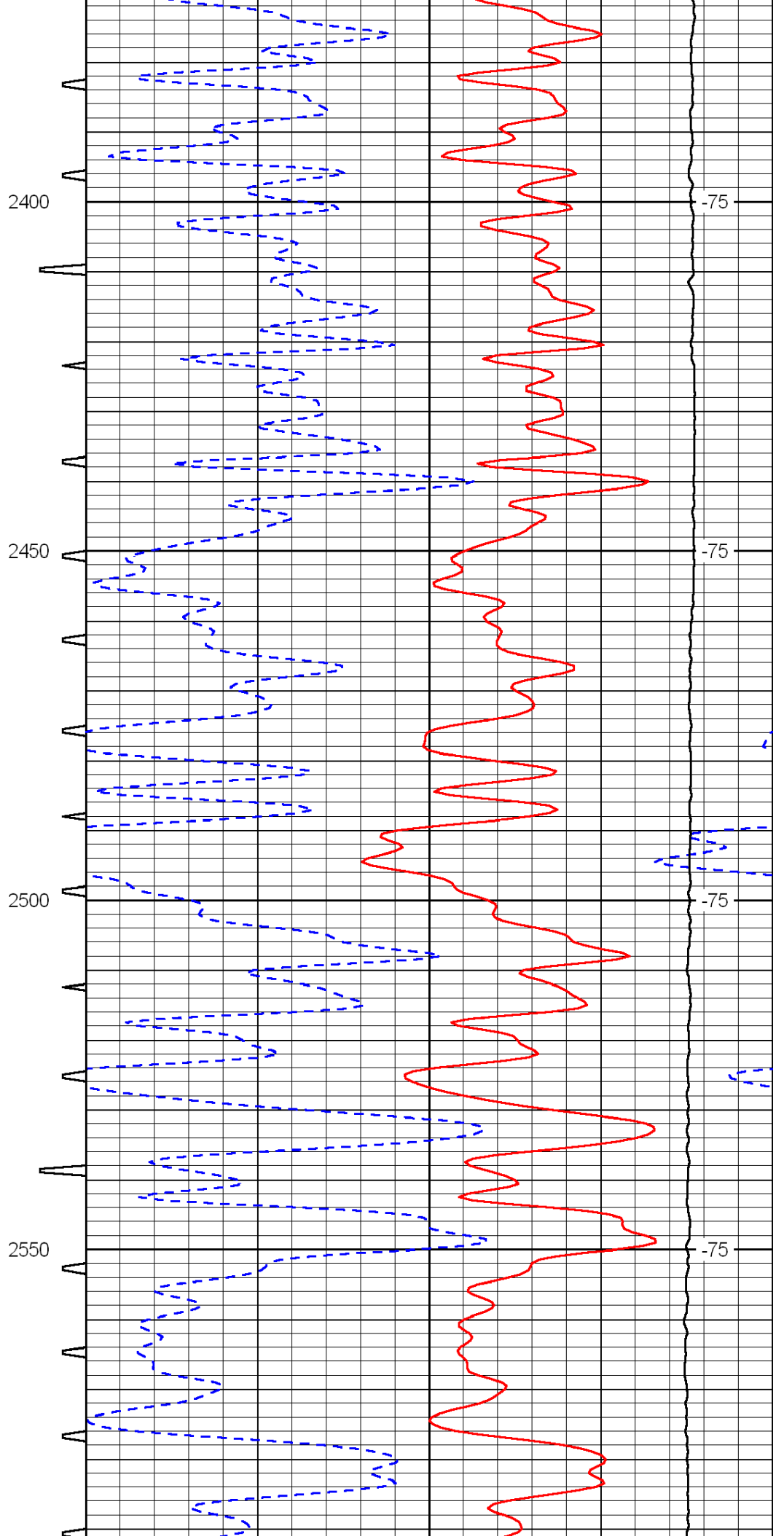
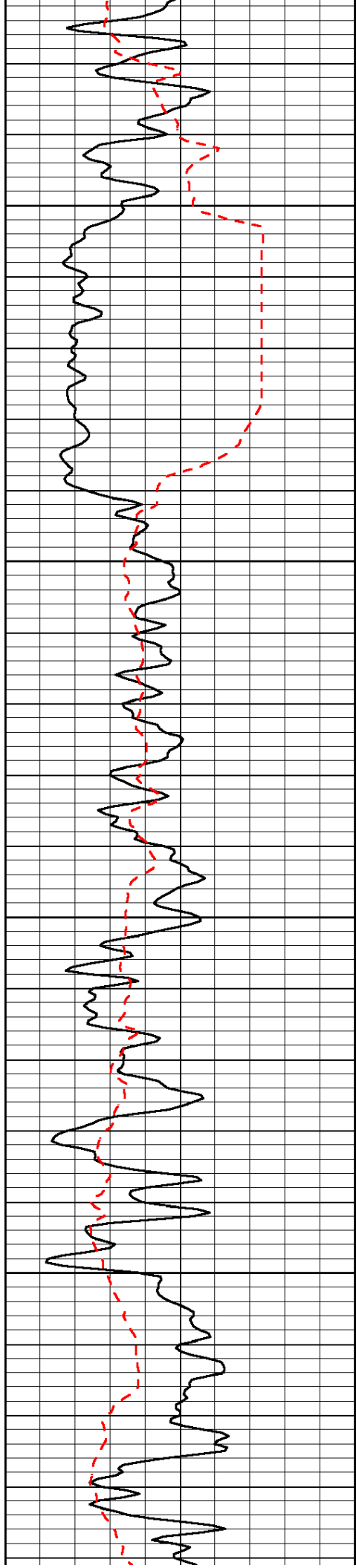


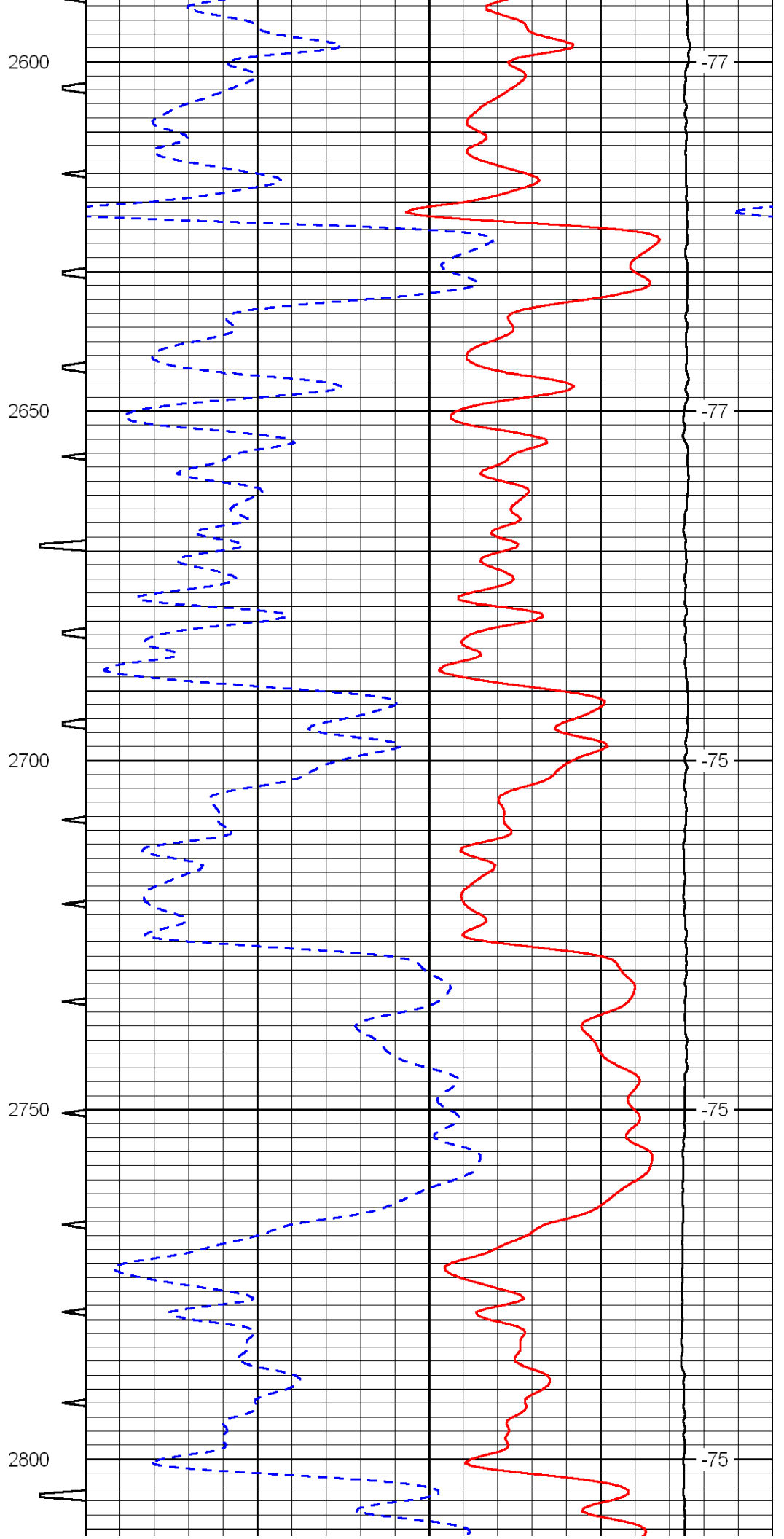
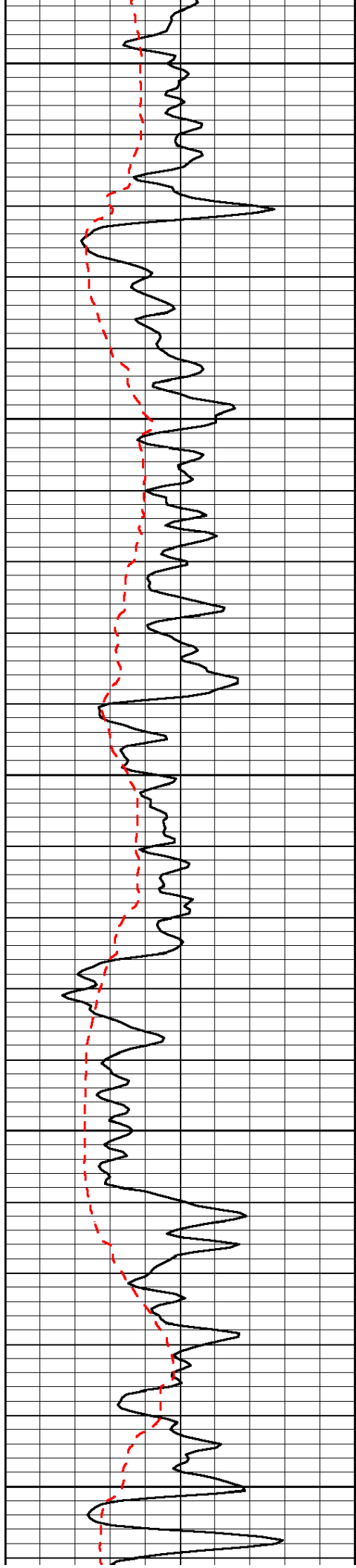


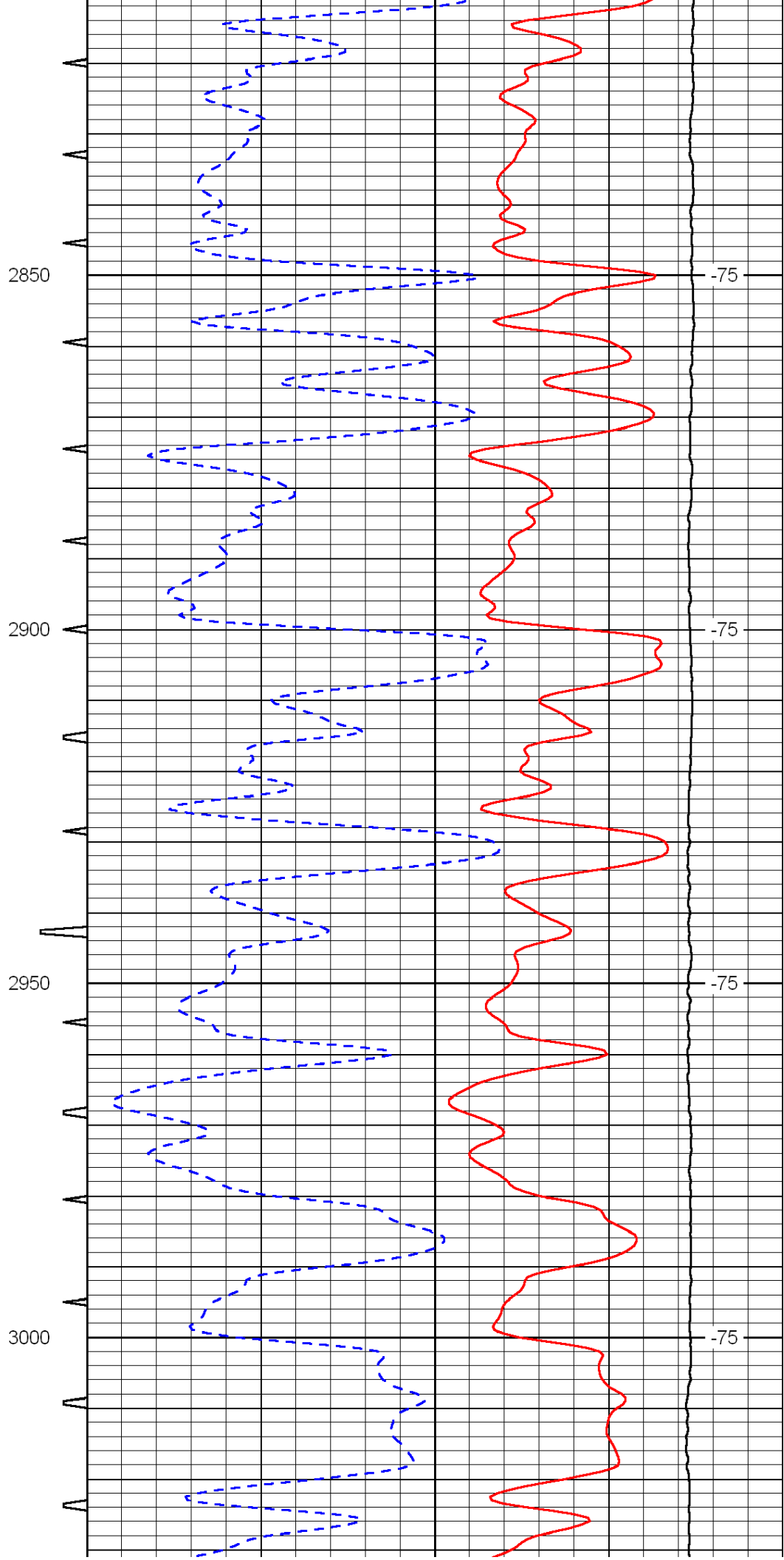
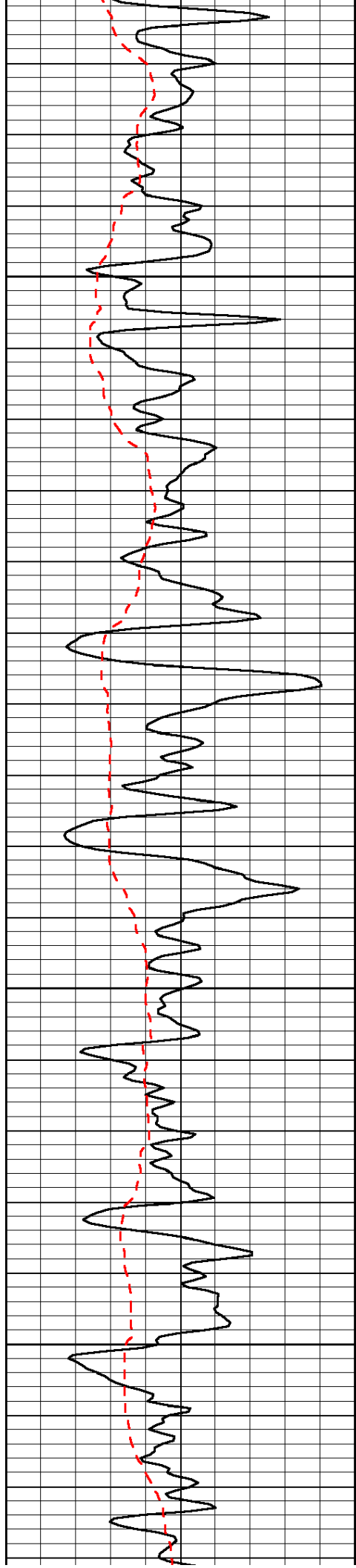


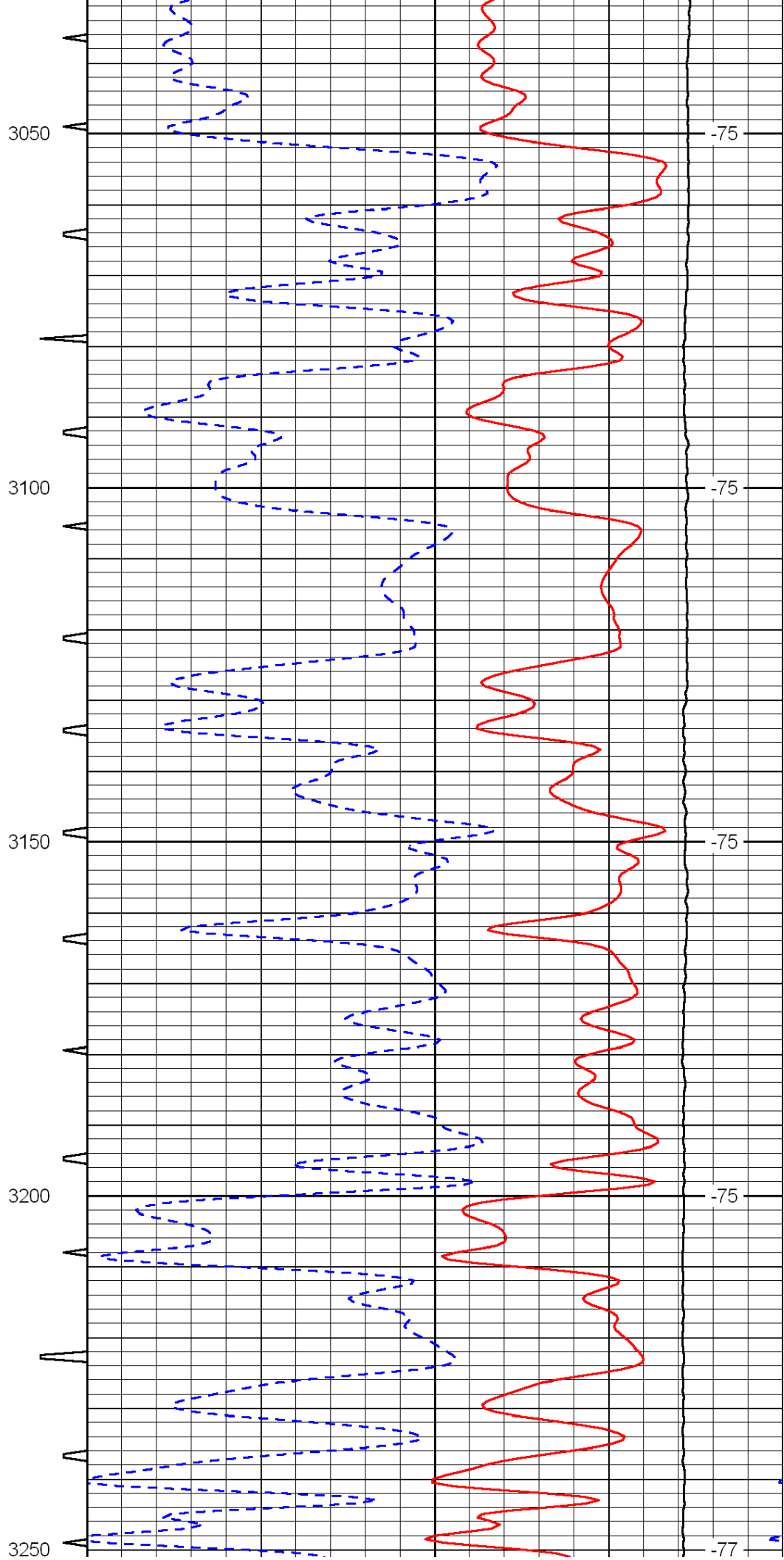
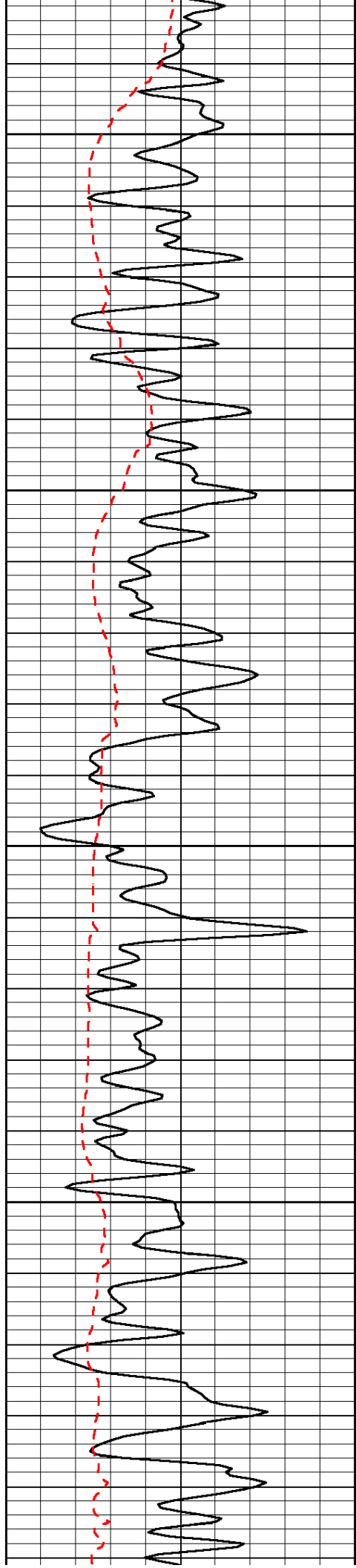


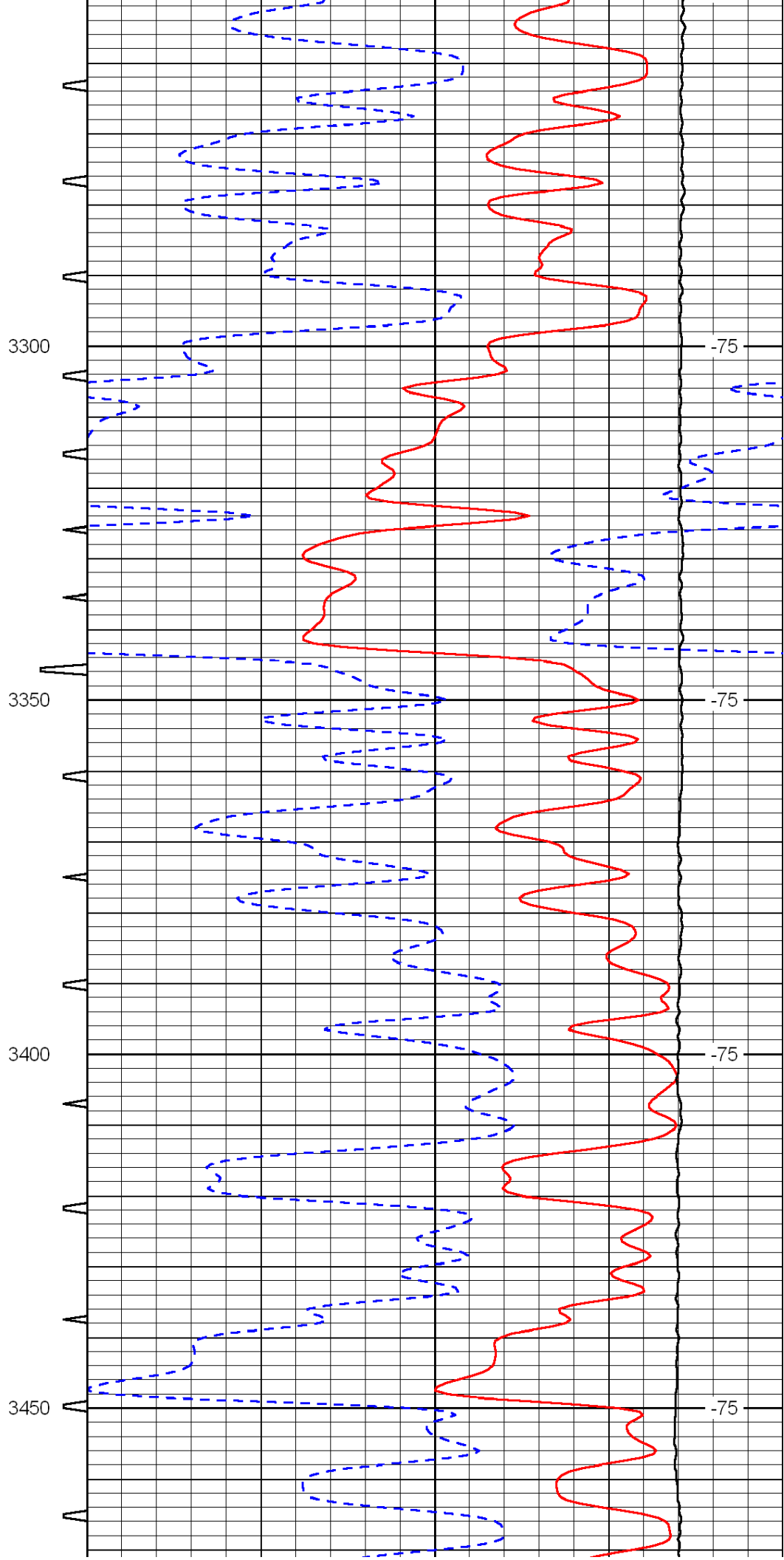
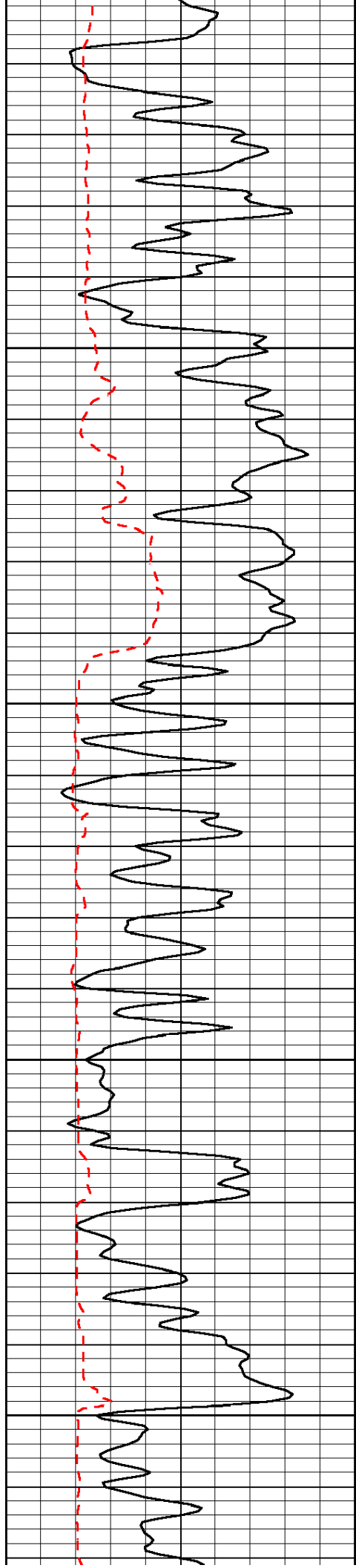


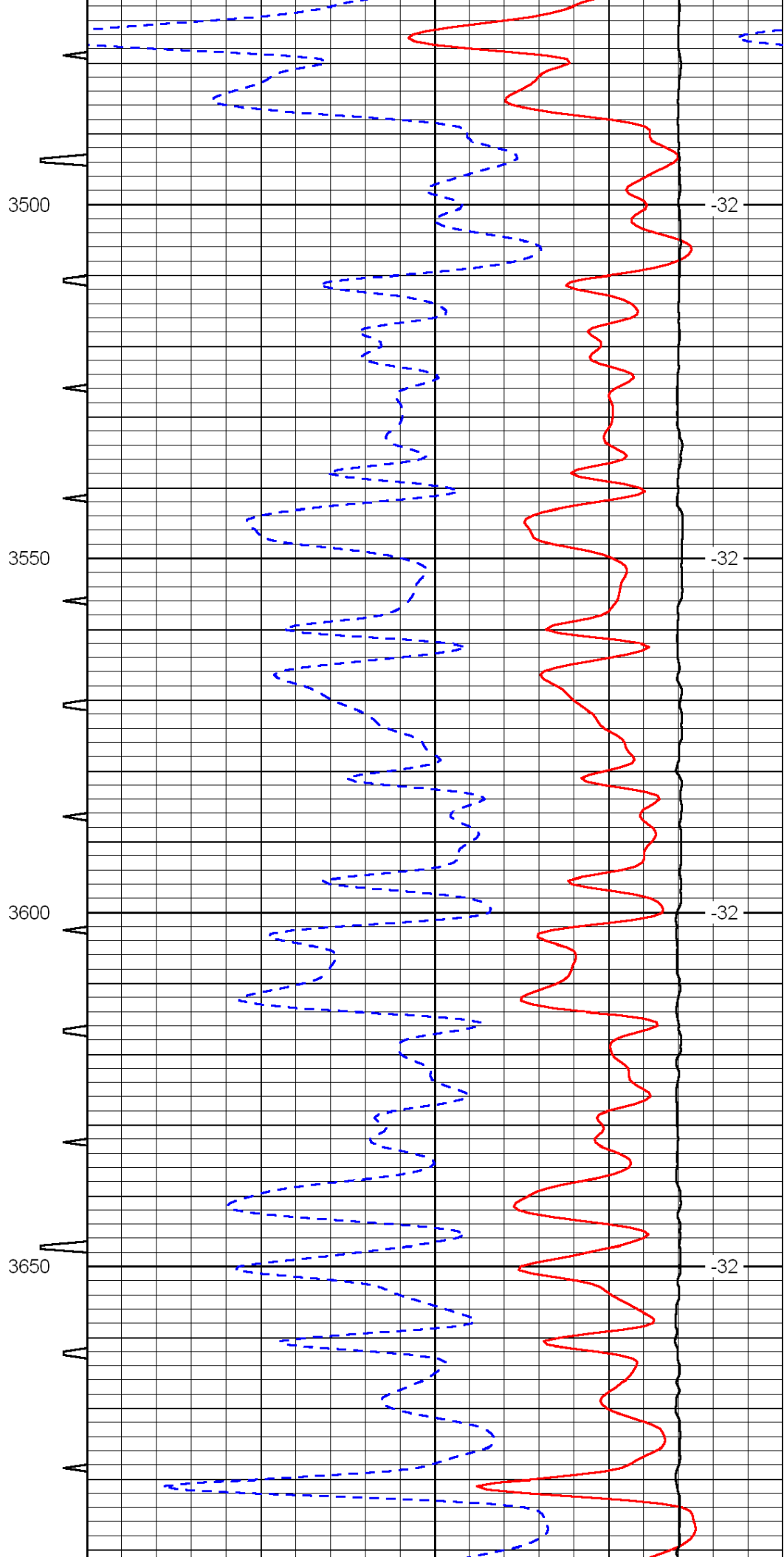
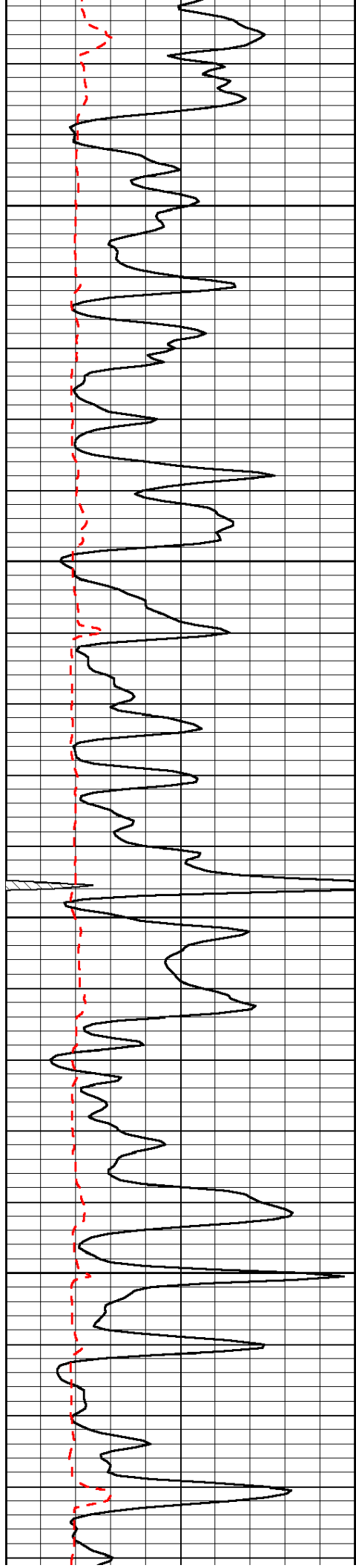


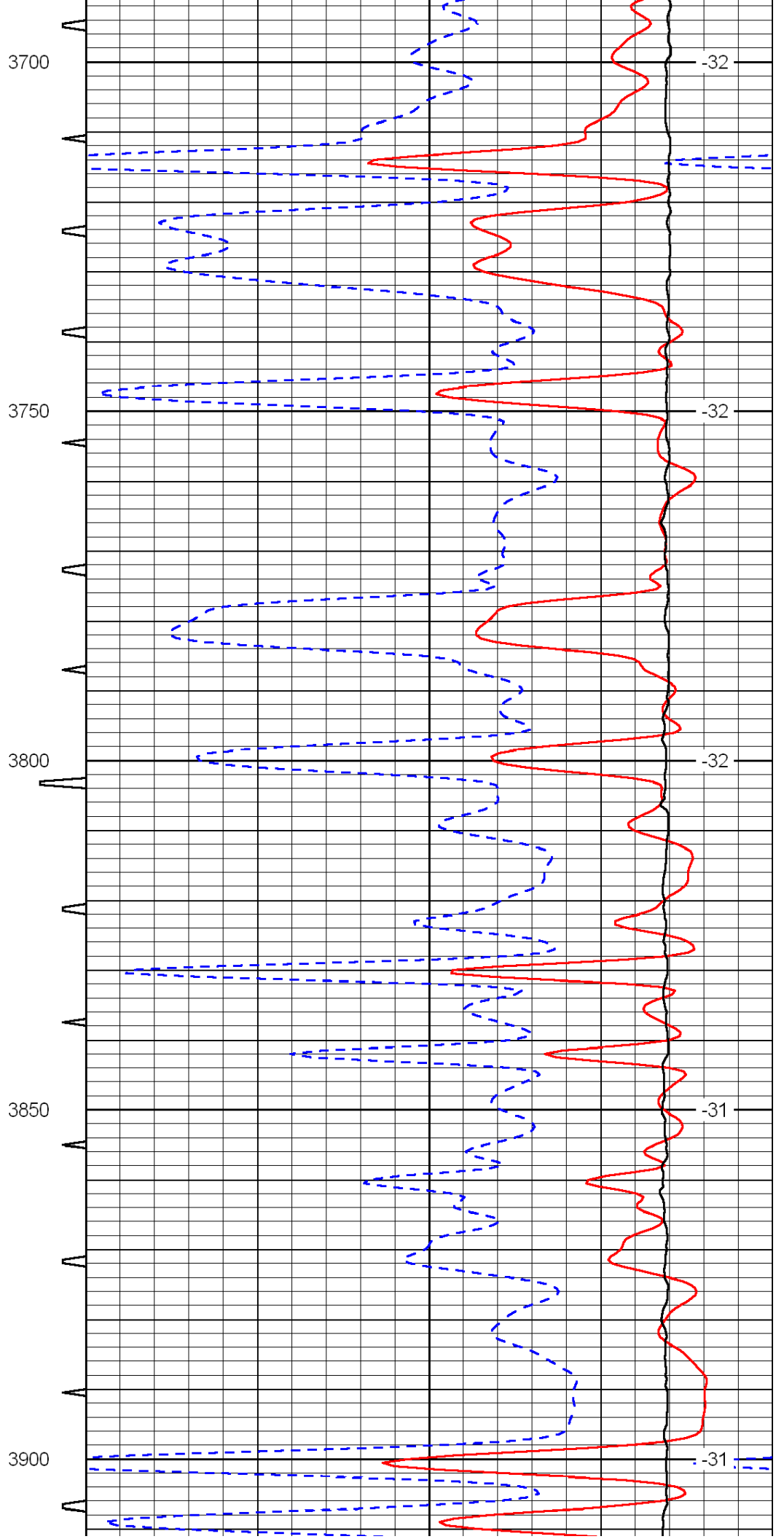
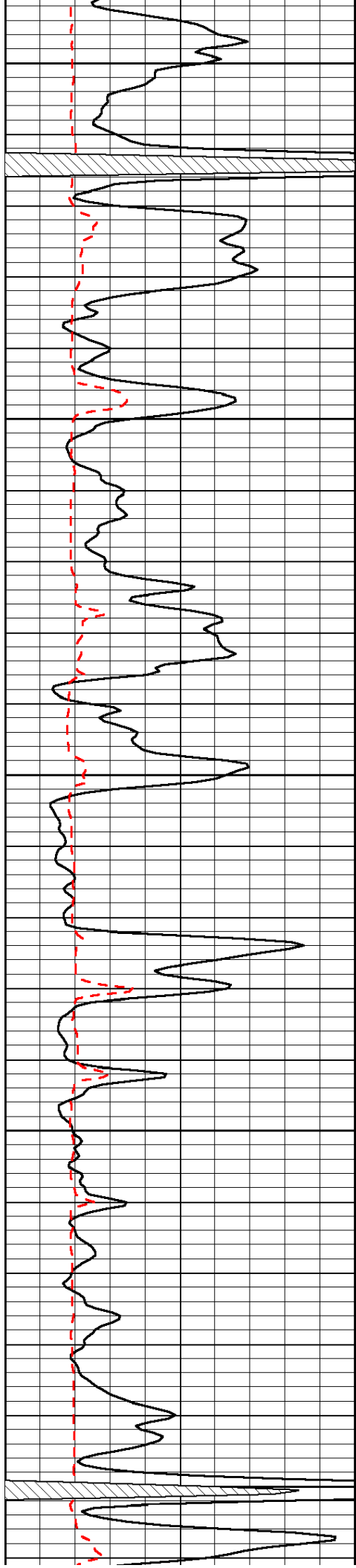


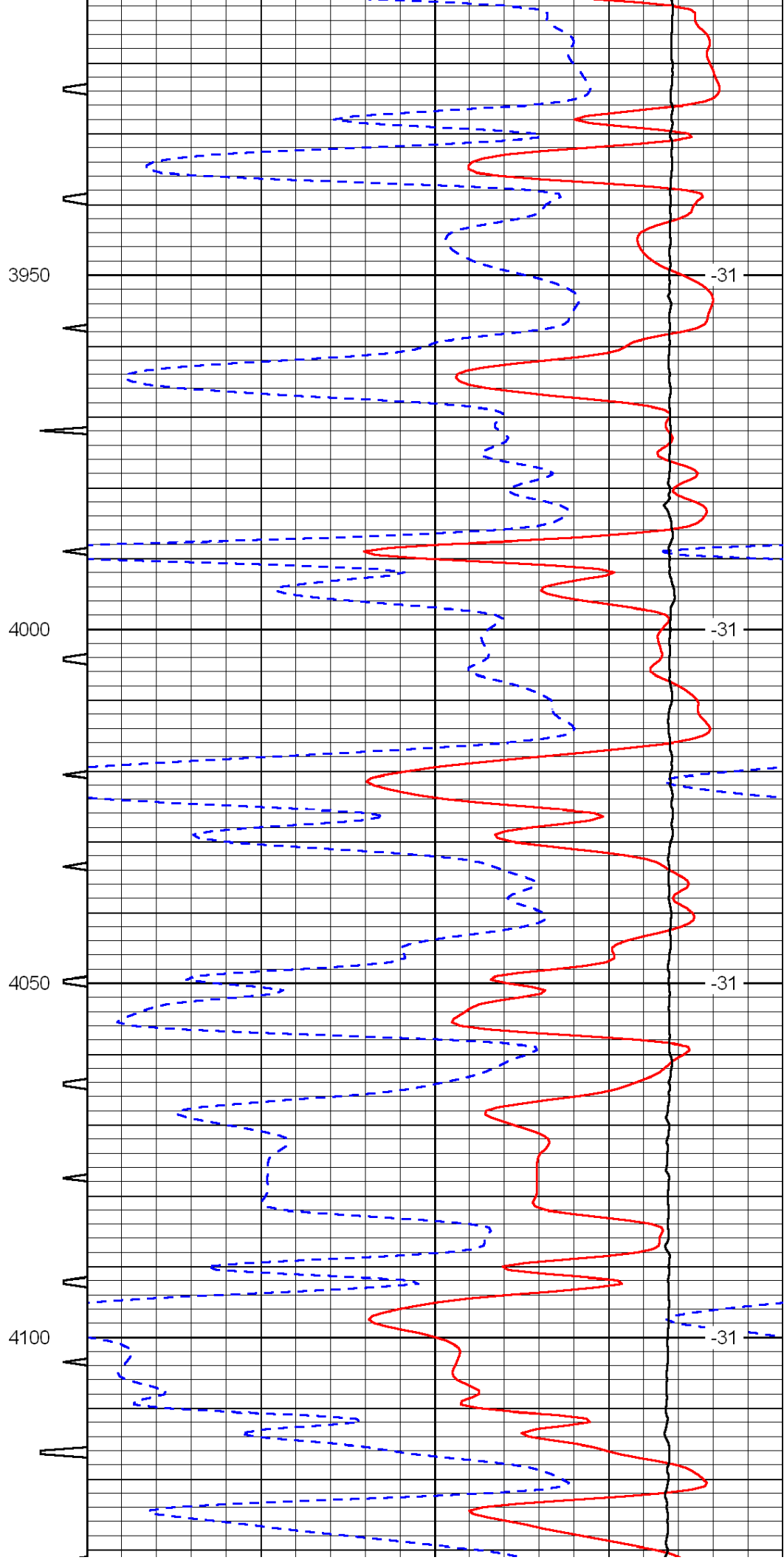
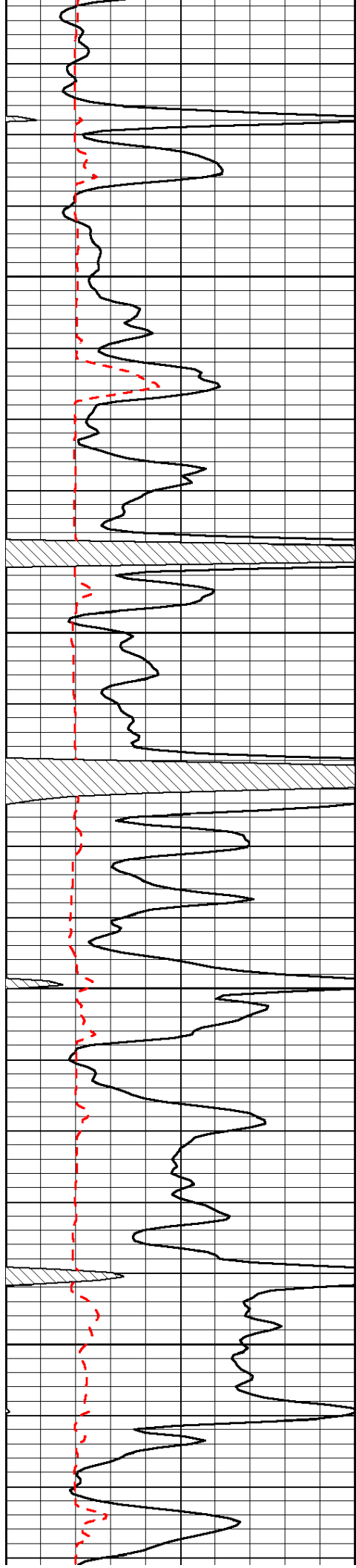


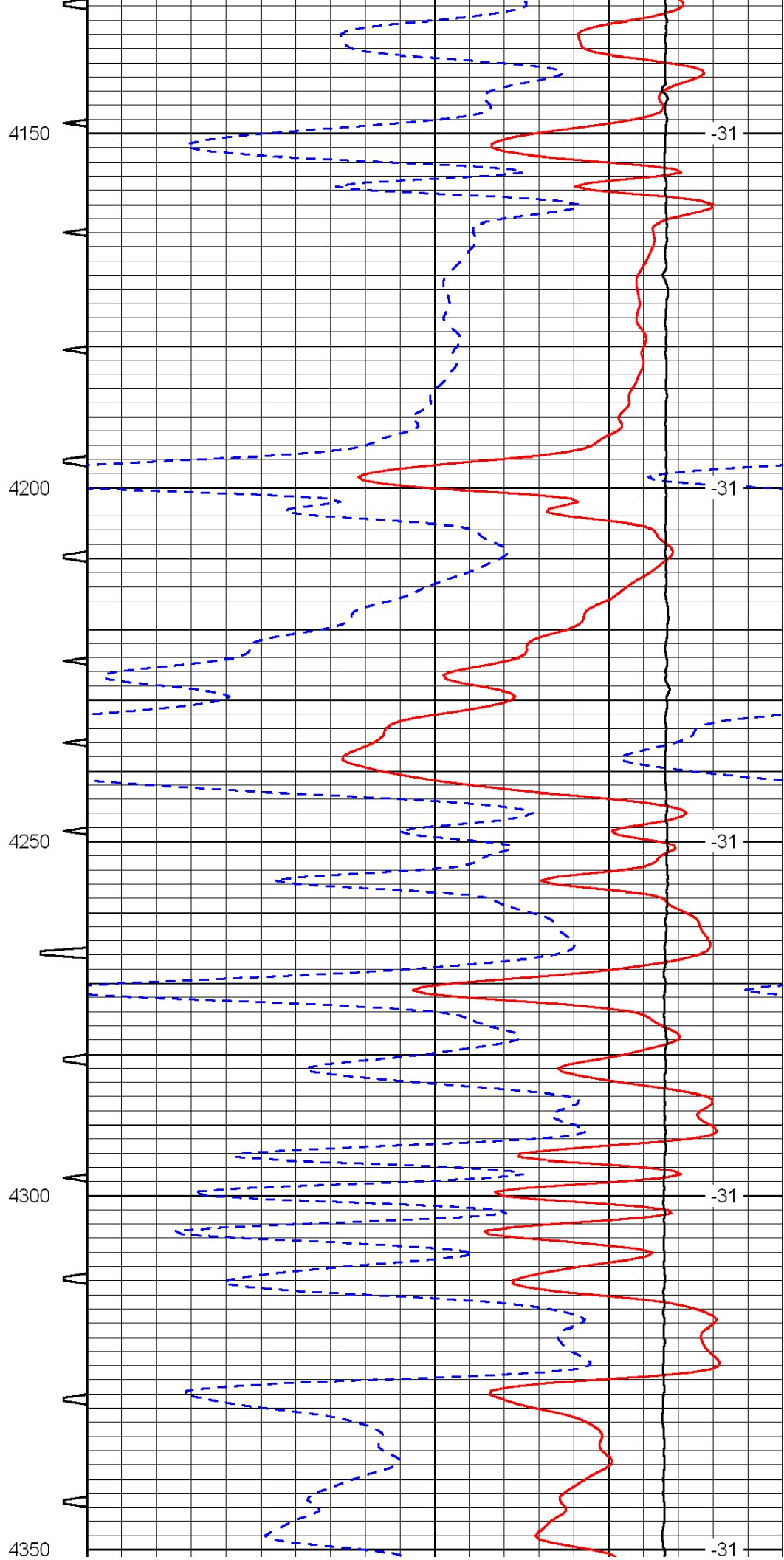
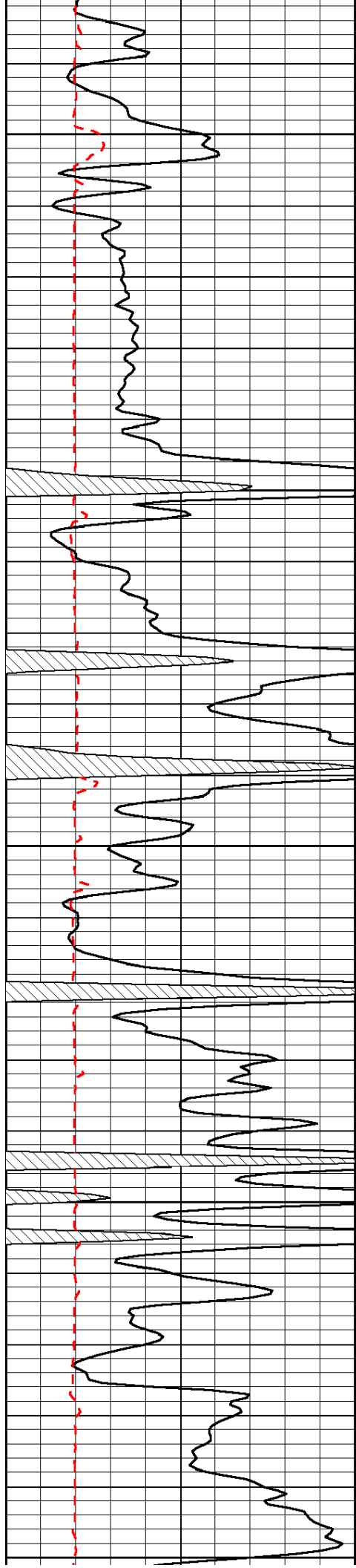


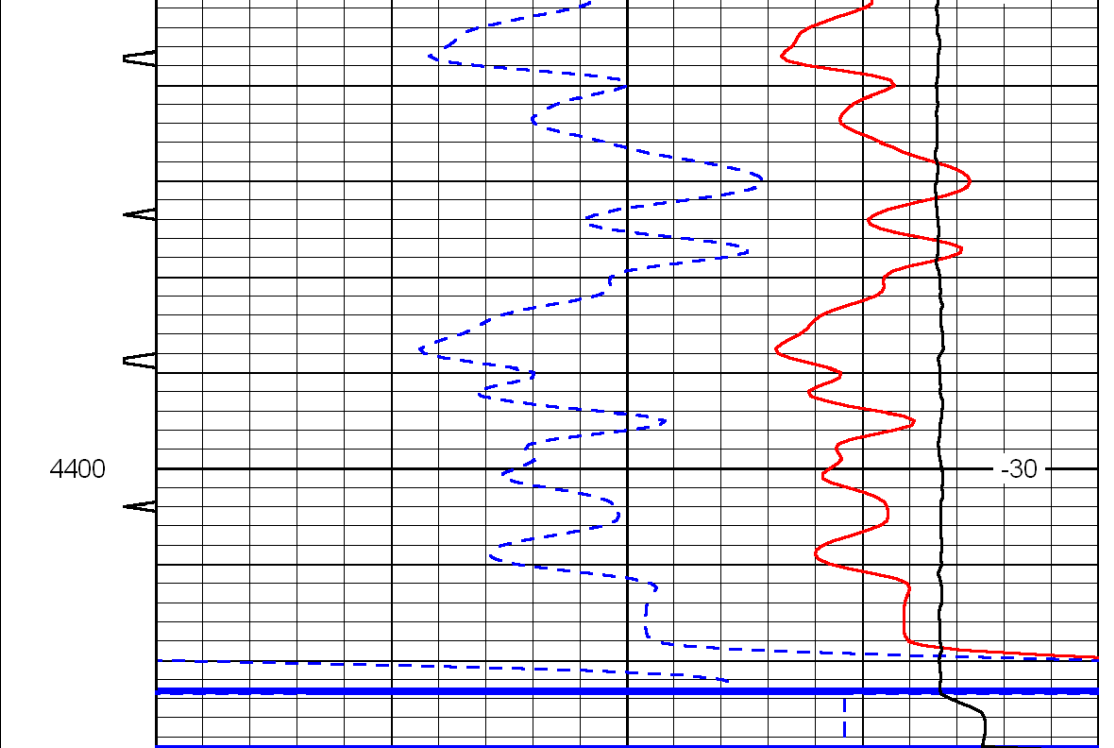
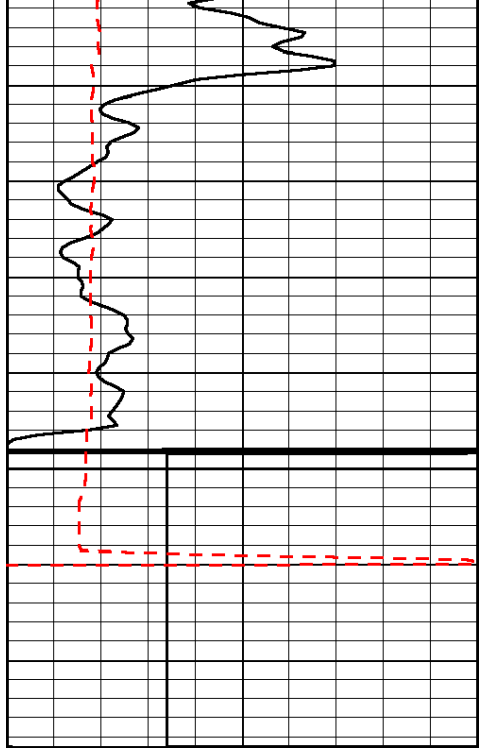












0	Gamma Ray	150	Sonic Int	140	Delta Time (usec/ft)	40
150	Gamma Ray	300	5	0	SPOR	-10
6	Caliper (GAPI)	16		15000	LTEN (lb)	0
LSPD						