



SUPERIOR
Hays,
Kansas

COMPENSATED
DENSITY/NEUTRON
PE LOG

Company LOTUS OPERATING CO., LLC.
Well SUZIE #6
Field STRANATHAN
County BARBER
State KANSAS

Company LOTUS OPERATING COMPANY, LLC.
Well SUZIE #6
Field STRANATHAN
County BARBER State KANSAS

Location: API # : 15-007-23766-0000
330' FSL & 2145' FWL
W/2 - SE - SE - SW
SEC 30 TWP 34S RGE 11W
Permanent Datum GROUND LEVEL Elevation 1398
Log Measured From KELLY BUSHING 13' A.G.L.
Drilling Measured From KELLY BUSHING
Other Services
DIL
MEL/SON
Elevation
K.B. 1411
D.F. 1409
G.L. 1398

| | |
|------------------------------|---------------|
| Date | 9/20/11 |
| Run Number | TWO |
| Depth Driller | 5450 |
| Depth Logger | 5454 |
| Bottom Logged Interval | 5452 |
| Top Log Interval | 3600 |
| Casing Driller | 10 3/4" @ 255 |
| Casing Logger | 252 |
| Bit Size | 7 7/8 |
| Type Fluid in Hole | CHEMICAL MUD |
| Density / Viscosity | 9.4/52 |
| pH / Fluid Loss | 10.0/9.6 |
| Source of Sample | FLOWLINE |
| Rin @ Meas. Temp | 0.65 @ 97F |
| Rmf @ Meas. Temp | 0.49 @ 97F |
| Rmc @ Meas. Temp | 0.78 @ 97F |
| Source of Rmf / Rmc | MEASURED |
| Rin @ BHT | 0.49 @ 129F |
| Time Circulation Stopped | 2 HOURS |
| Time Logger on Bottom | |
| Maximum Recorded Temperature | 129F |
| Equipment Number | 680 |
| Location | HAYS, KS. |
| Recorded By | JEFF GRONEMEG |
| Witnessed By | WES HANSEN |

<<< Fold Here >>>

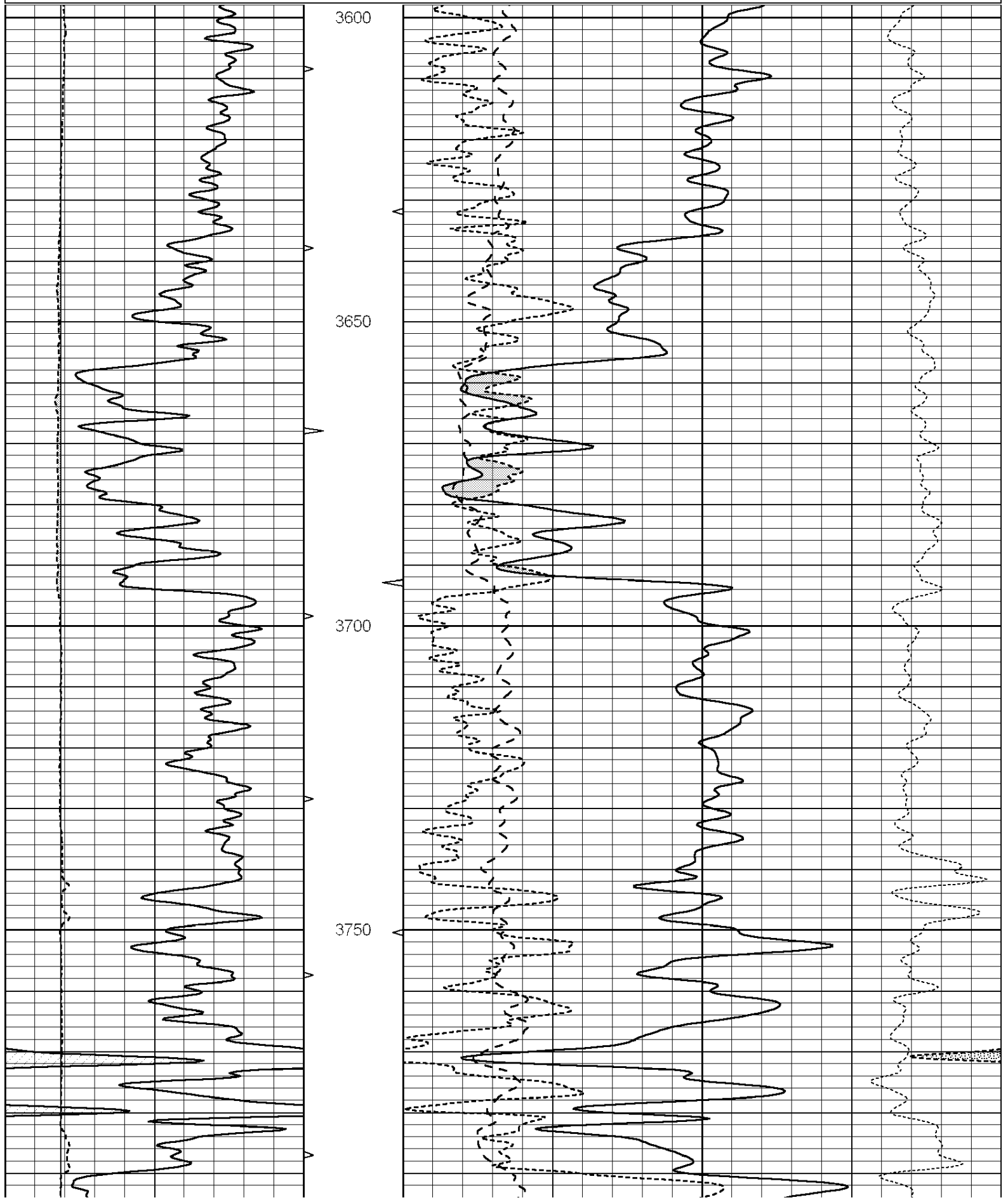
All interpretations are opinions based on inferences from electrical or other measurements and we cannot and do not guarantee the accuracy or correctness of any interpretation, and we shall not, except in the case of gross or willful negligence on our part, be liable or responsible for any loss, costs, damages, or expenses incurred or sustained by anyone resulting from any interpretation made by any of our officers, agents or employees. These interpretations are also subject to our general terms and conditions set out in our current Price Schedule.

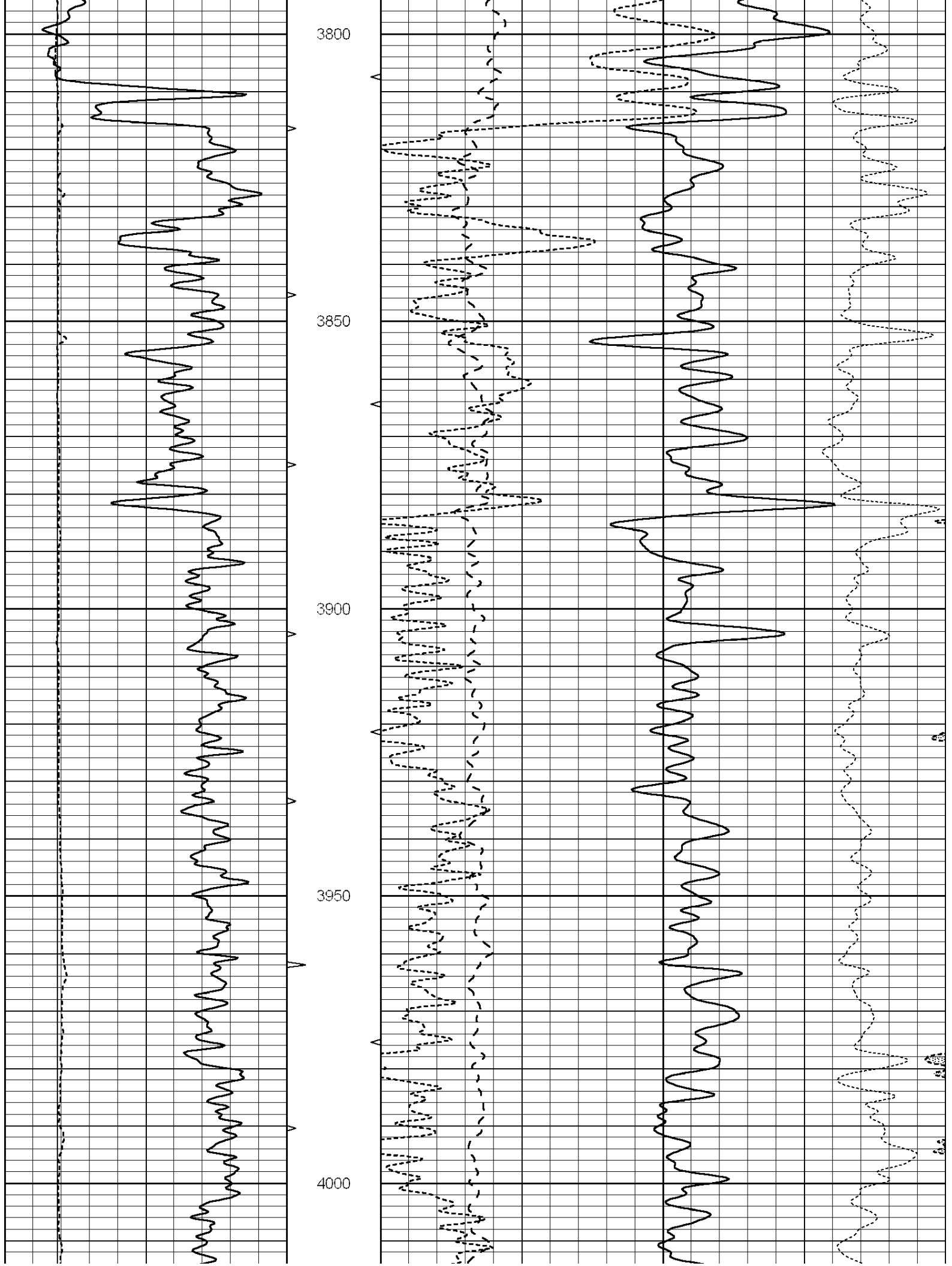
Comments

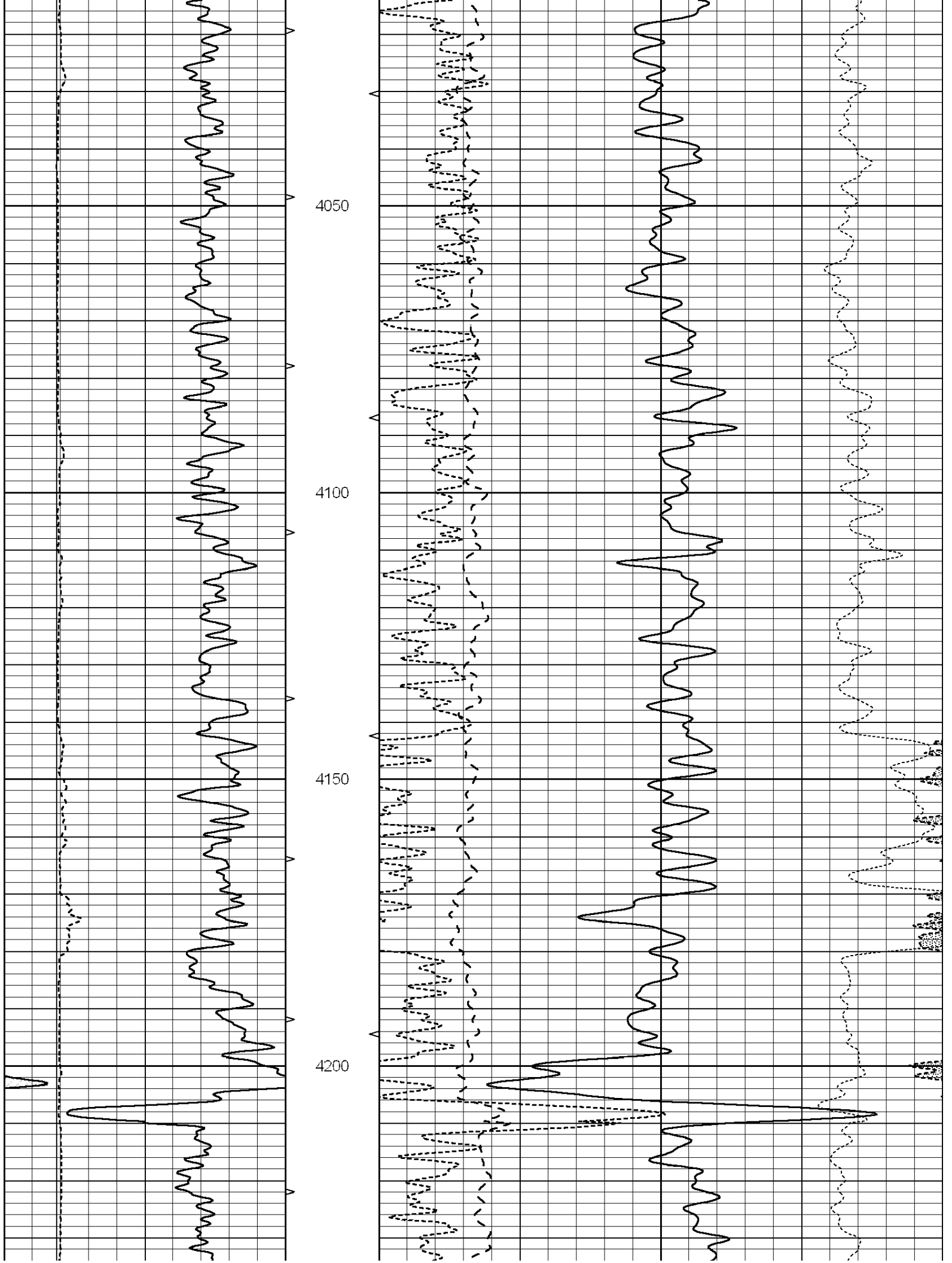
THANK YOU FOR USING SUPERIOR WELL SERVICE (785) 628-6395
DIRECTIONS
MEDICINE LODGE, KS - 16 MILES SOUTH TO RATTLESNAKE RD
3/8 MILE EAST - NORTH INTO

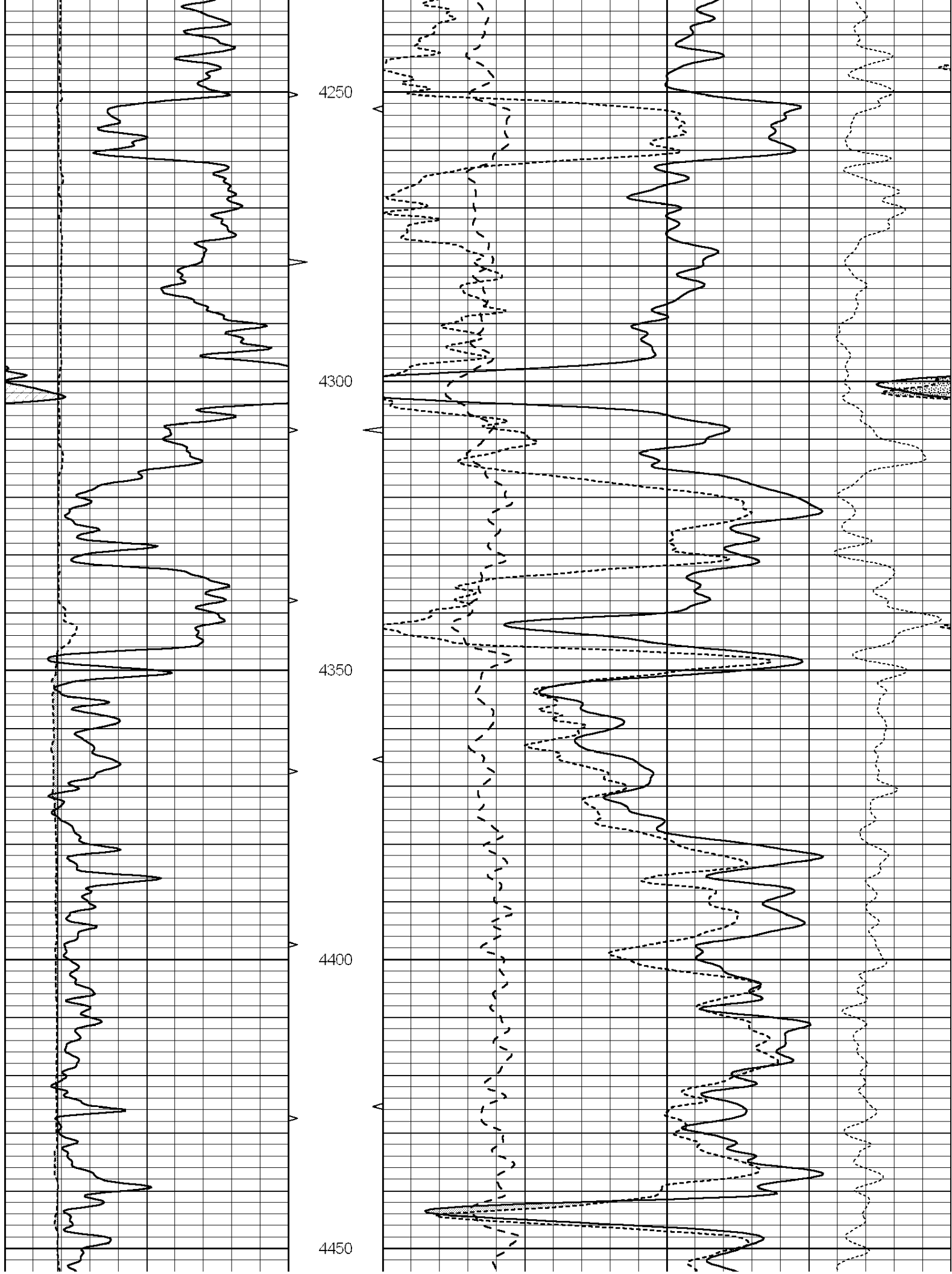
Database File: 007715pe.db
Dataset Pathname: pass5.5
Presentation Format: _ldt_neu
Dataset Creation: Tue Sep 20 21:31:33 2011
Charted by: Depth in Feet scaled 1:240

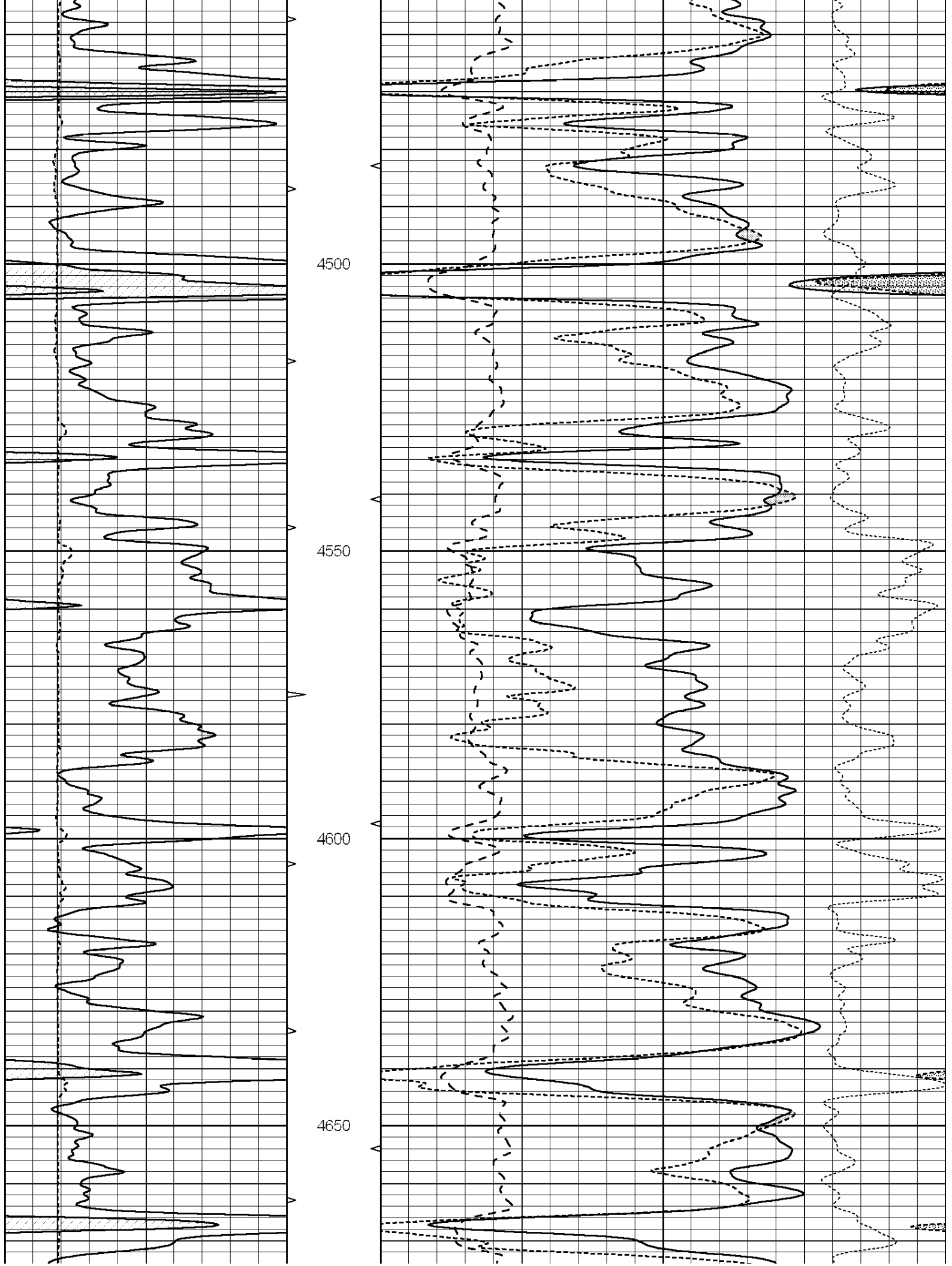
| | | | | | | | | | |
|---|------------------|-----|----------|----|--------------------------|--------------------------|-------|-------------------|------|
| 0 | GAMMA RAY (GAPI) | 150 | ABHV | 30 | COMPENSATED DENSITY (pu) | | | -10 | |
| 6 | CALIPER (in) | 16 | 10 (ft3) | 0 | 30 | COMPENSATED NEUTRON (pu) | | | -10 |
| | | | TBHV | 0 | PE | 10 | -0.25 | CORRECTION (g/cc) | 0.25 |
| | | | 0 (ft3) | 10 | | | | | |

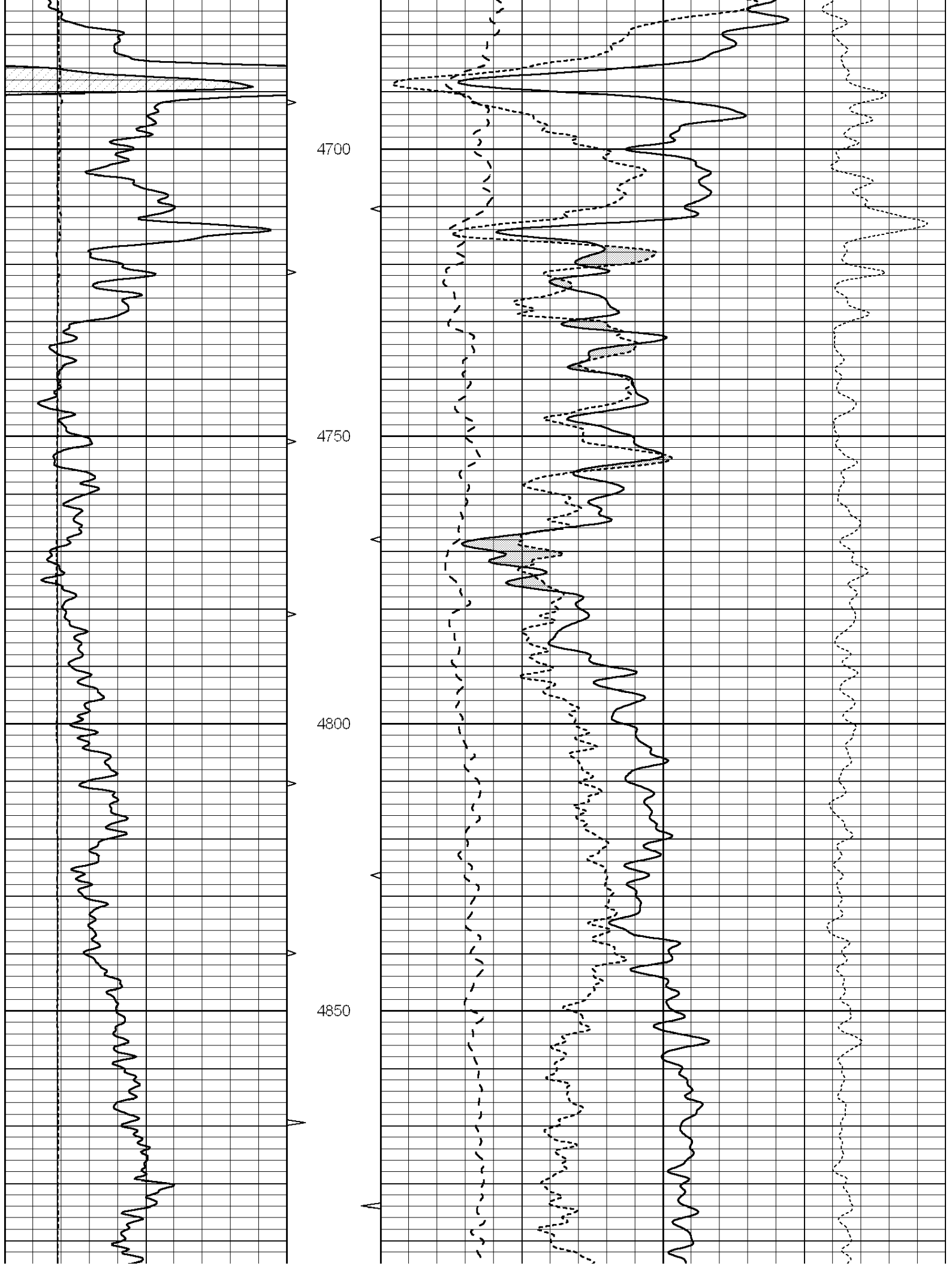


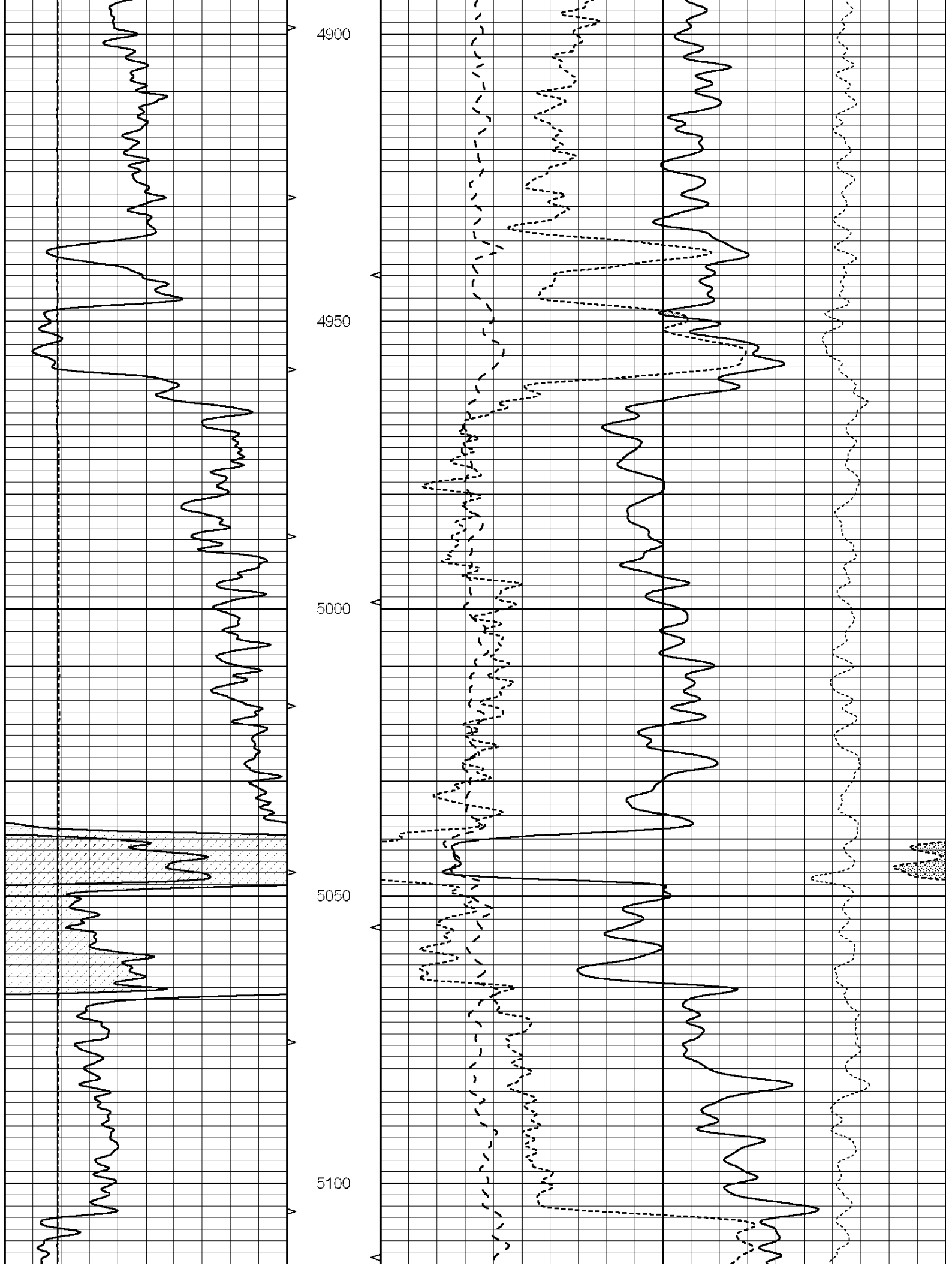


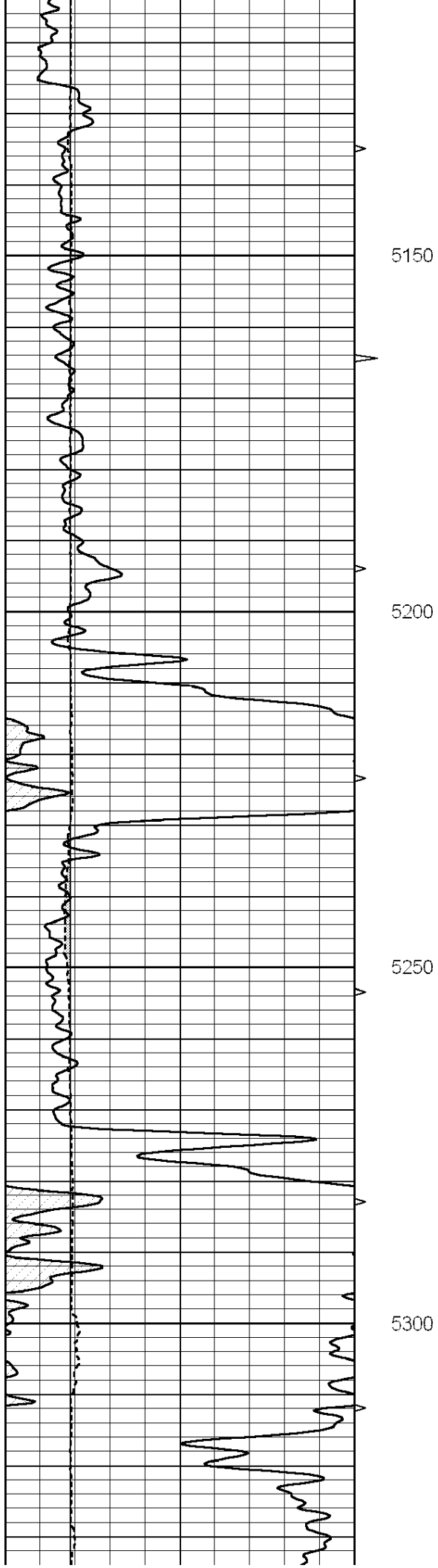
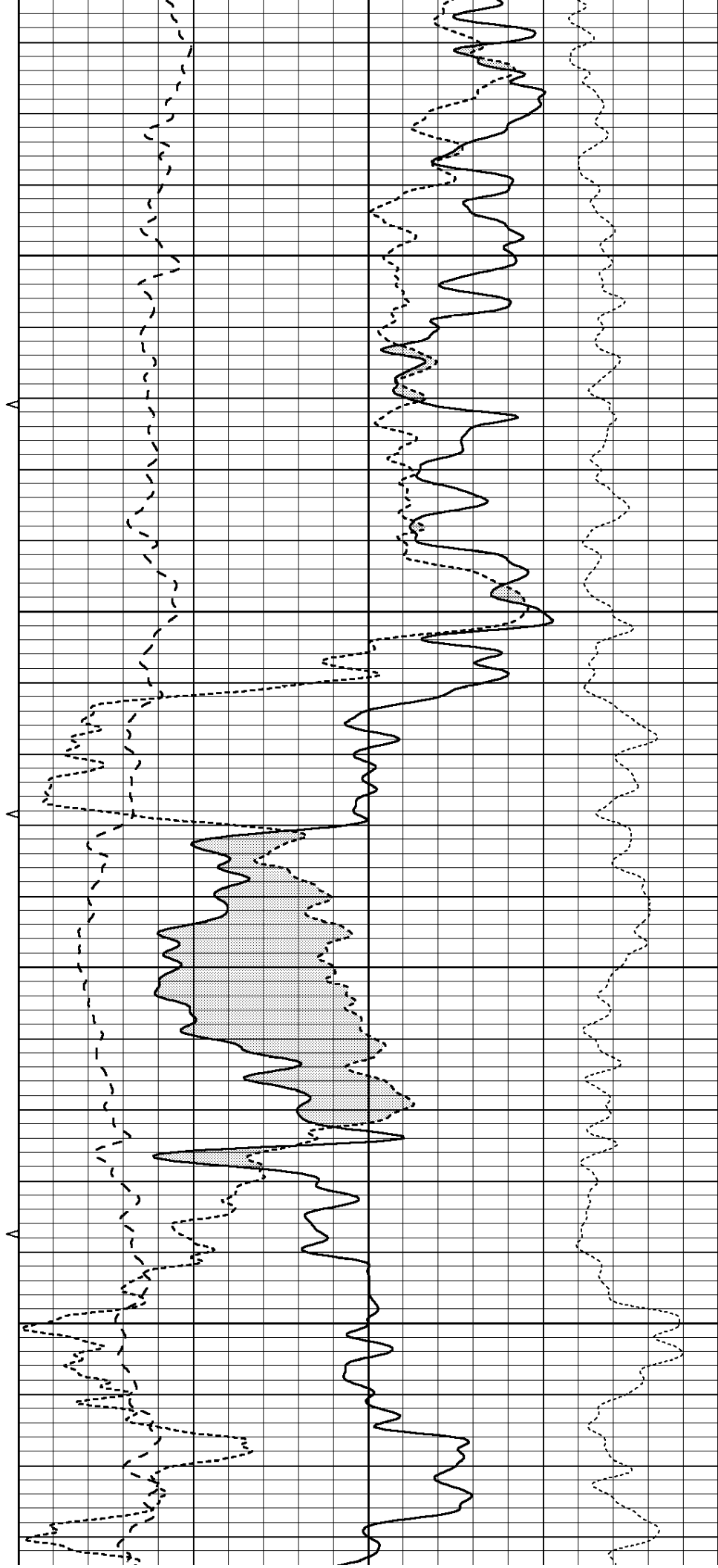
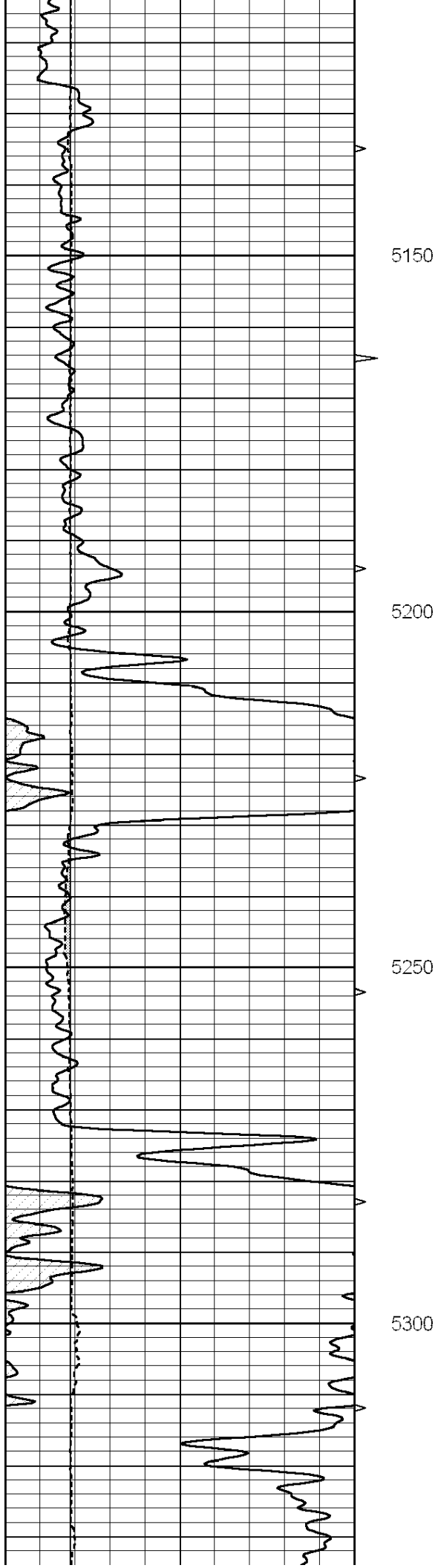


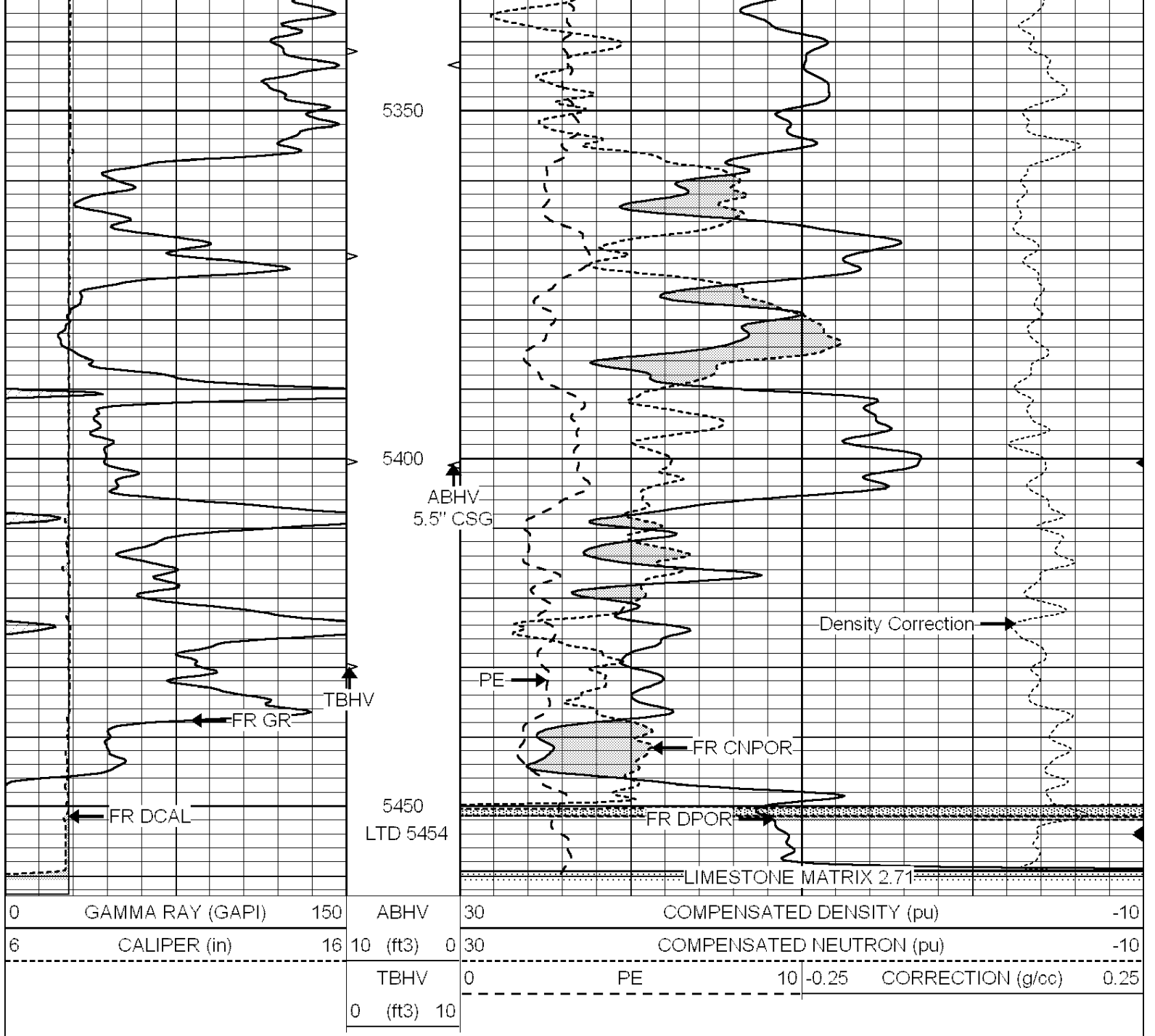








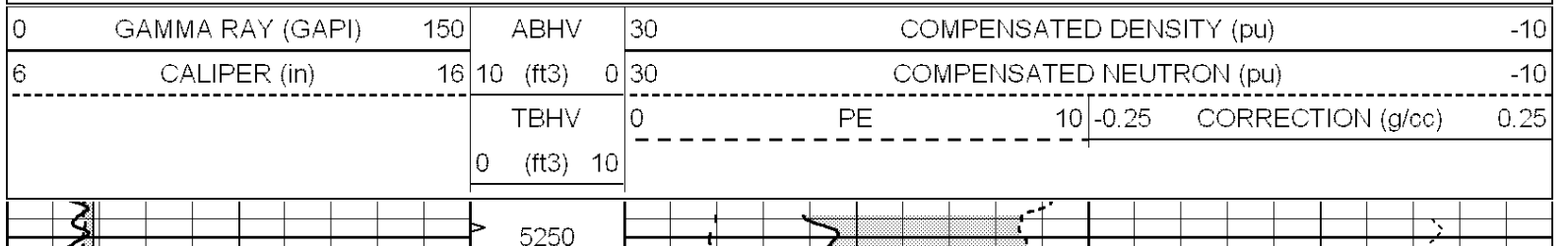


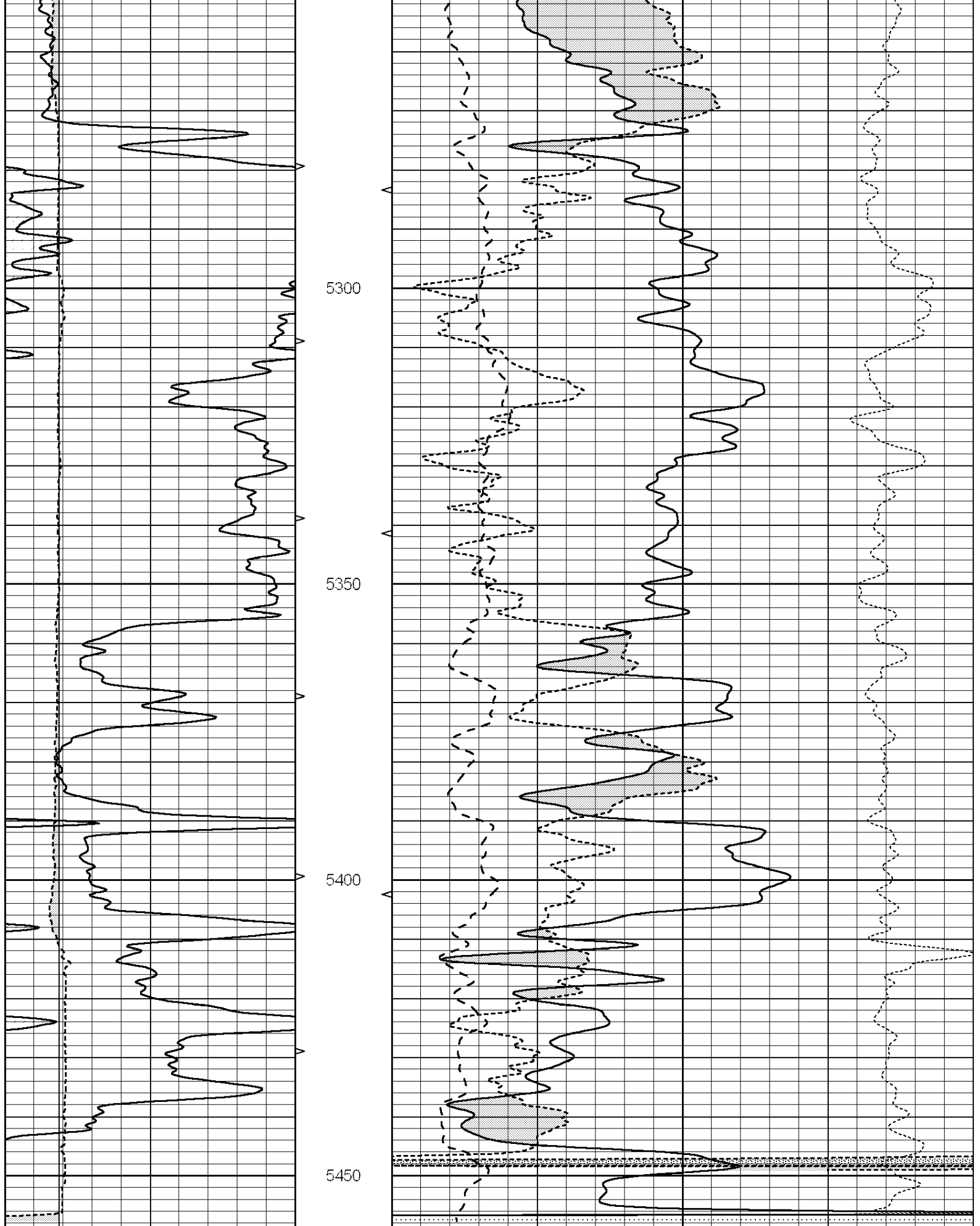


SUPERIOR
Hays,
Kansas

REPEAT SECTION

Database File: 007715pe.db
 Dataset Pathname: pass4.9
 Presentation Format: _ldt_neu
 Dataset Creation: Tue Sep 20 21:38:41 2011 by Calc Open-Cased 090629
 Charted by: Depth in Feet scaled 1:240





| | | | | | | |
|---|------------------|-----|----------|------|--------------------------|-------------------|
| 0 | GAMMA RAY (GAPI) | 150 | ABHV | 30 | COMPENSATED DENSITY (pu) | -10 |
| 6 | CALIPER (in) | 16 | 10 (ft3) | 0 30 | COMPENSATED NEUTRON (pu) | -10 |
| | | | TRHV | 0 | PF | 10 -0.25 |
| | | | | | | CORRECTION (g/cc) |
| | | | | | | 0.25 |

Calibration Report

Database File: 007715pe.db
 Dataset Pathname: pass5.5
 Dataset Creation: Tue Sep 20 21:31:33 2011

Litho Density Calibration Report
 Serial: 001 Model: PRB
 Performed Thu Sep 17 09:57:21 2009

Litho Density Calibration

| | Background | Magnesium | Aluminum | Sandstone | |
|-------------|------------|-------------|----------|---------------------|---------|
| Window 1 | 2056.0 | 9796.8 | 3673.1 | 10821.3 | cps |
| Window 2 | 1920.0 | 8541.1 | 3303.5 | 9307.2 | cps |
| Window 3 | 1563.1 | 4735.7 | 2212.8 | 5017.5 | cps |
| Window 4 | 466.0 | 466.1 | 465.6 | 471.5 | cps |
| Long Space | 0.0 | 6621.1 | 1383.5 | 7387.2 | cps |
| Short Space | 2.5 | 2361.7 | 1523.2 | 2534.0 | cps |
| Rho | | 1.7100 | 2.5900 | 1.3800 | g/cc |
| Pe | | | 2.5700 | 1.5500 | |
| Rib Angle | : 44.4 | Rib Slope | : 0.978 | Density/Spine Ratio | : 0.541 |
| Spine Angle | : 74.4 | Spine Slope | : 3.570 | Spine Intercept | : -18.9 |

Caliper

| | Readings | Reference | |
|----------|-----------|-----------|-------------|
| Low Ref | 3.1 | 8.4 | |
| High Ref | 4.3 | 14.3 | |
| | Gain: 1.6 | | Offset: 2.5 |

Compensated Neutron Calibration Report

Serial Number: 6I
 Tool Model: G

CALIBRATION

| Detector | Readings | Target | Normalization |
|-------------|----------|----------|---------------|
| Short Space | 1.00 cps | 1.00 cps | 1.0000 |
| Long Space | 1.00 cps | 1.00 cps | 1.0000 |

Gamma Ray Calibration Report

Serial Number: #8
 Tool Model: OPEN
 Performed: Mon Jun 13 16:56:43 2011

Calibrator Value: 150.0 GAPI

Background Reading: 0.0 cps
 Calibrator Reading: 175.0 cps

Sensitivity: 0.8371 GAPI/cps