



SUPERIOR
Hays,
Kansas

SONIC
LOG

Company LOTUS OPERATING CO., LLC.
Well SUZIE #6
Field STRANATHAN
County BARBER
State KANSAS

Company LOTUS OPERATING COMPANY, LLC.
Well SUZIE #6
Field STRANATHAN
County BARBER State KANSAS

Location: API # : 15-007-23766-0000
330' FSL & 2145' FWL
W/2 - SE - SE - SW
SEC 30 TWP 34S RGE 11W
Permanent Datum GROUND LEVEL Elevation 1398
Log Measured From KELLY BUSHING 13' A.G.L.
Drilling Measured From KELLY BUSHING
Other Services
CDL/CNL/PE
DIL/MEL
Elevation
K.B. 1411
D.F. 1409
G.L. 1398

Date	9/20/11
Run Number	THREE
Depth Driller	5450
Depth Logger	5454
Bottom Logged Interval	5444
Top Log Interval	3600
Casing Driller	10 3/4" @ 255
Casing Logger	252
Bit Size	7 7/8
Type Fluid in Hole	CHEMICAL MUD
Density / Viscosity	9.4/52
pH / Fluid Loss	10.0/9.6
Source of Sample	FLOWLINE
Rim @ Meas. Temp	0.65 @ 97F
Rmf @ Meas. Temp	0.49 @ 97F
Rmc @ Meas. Temp	0.78 @ 97F
Source of Rmf / Rmc	MEASURED
Rim @ BHT	0.49 @ 129F
Time Circulation Stopped	2 HOURS
Time Logger on Bottom	
Maximum Recorded Temperature	129F
Equipment Number	680
Location	HAYS, KS.
Recorded By	JEFF GRONEMEG
Witnessed By	WES HANSEN

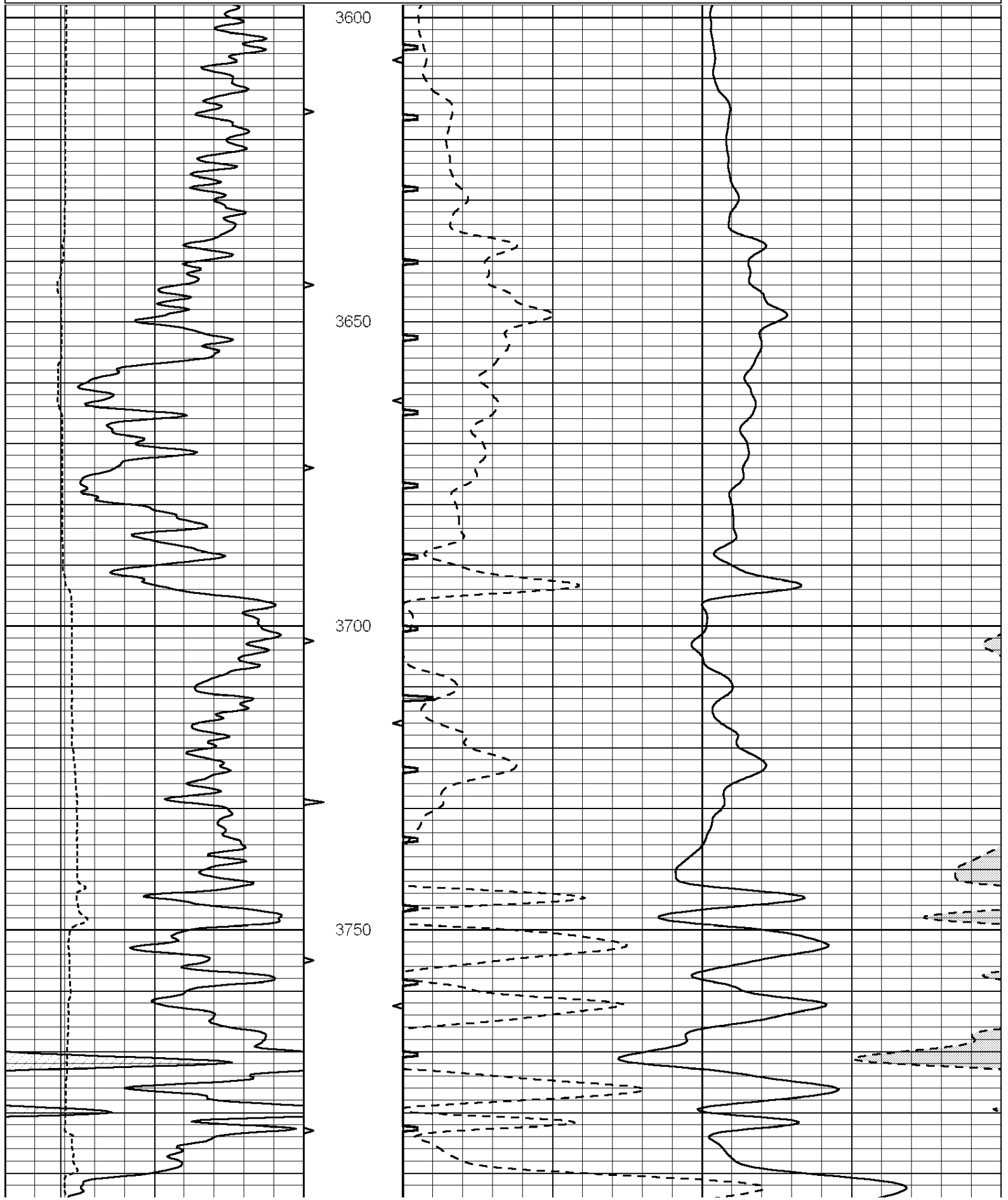
<<< Fold Here >>>

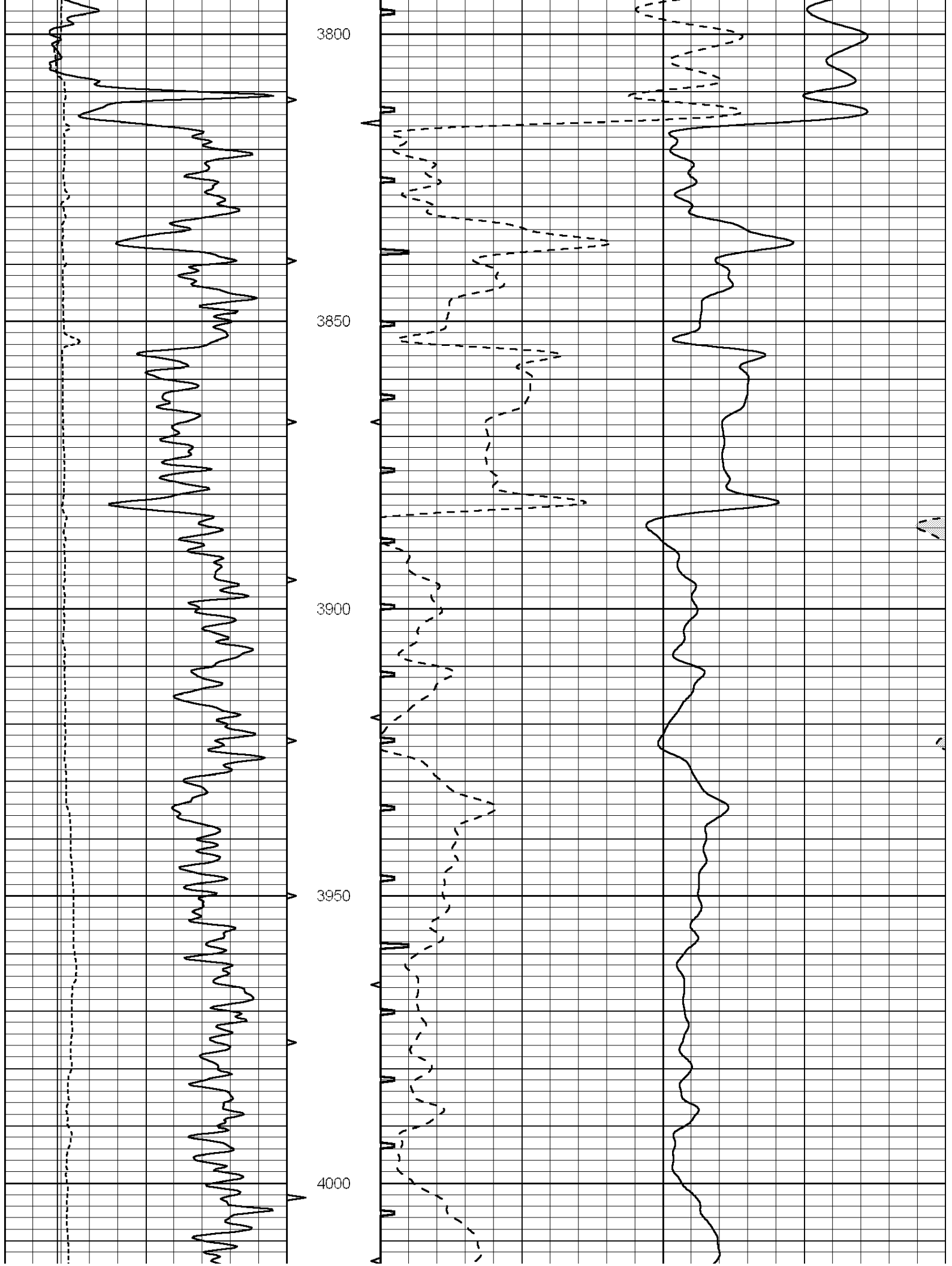
All interpretations are opinions based on inferences from electrical or other measurements and we cannot and do not guarantee the accuracy or correctness of any interpretation, and we shall not, except in the case of gross or willful negligence on our part, be liable or responsible for any loss, costs, damages, or expenses incurred or sustained by anyone resulting from any interpretation made by any of our officers, agents or employees. These interpretations are also subject to our general terms and conditions set out in our current Price Schedule.

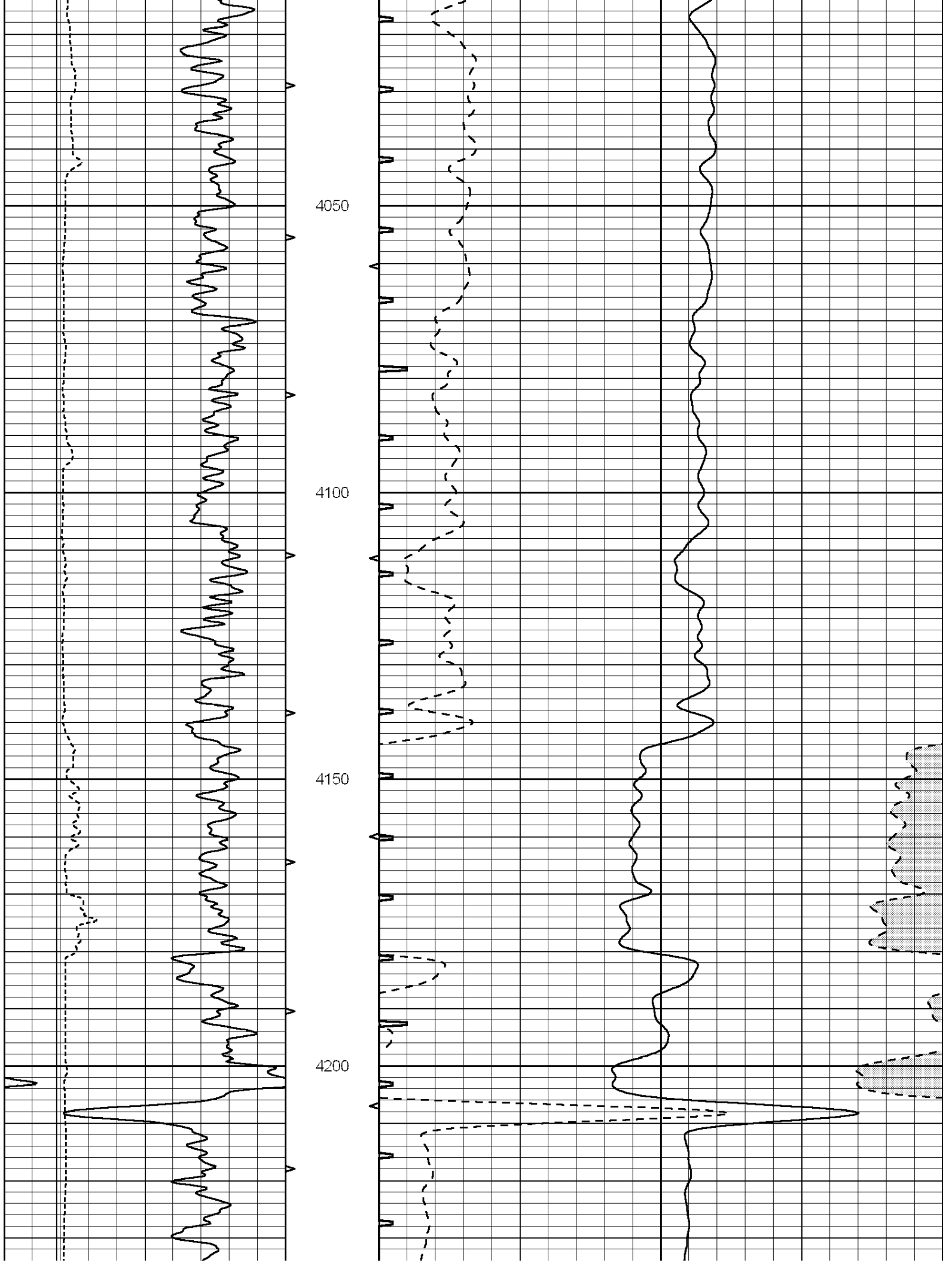
Comments

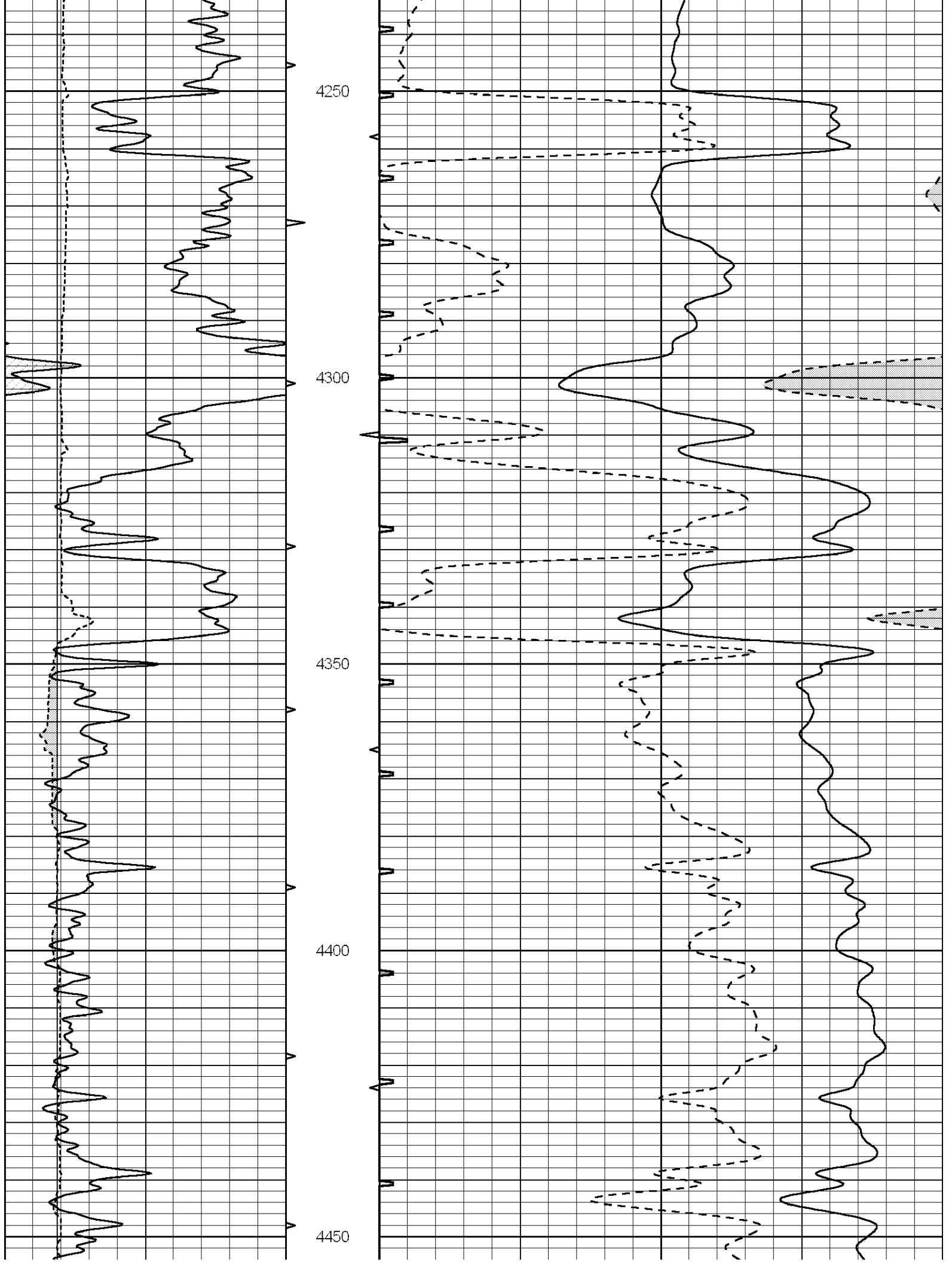
THANK YOU FOR USING SUPERIOR WELL SERVICE (785) 628-6395
DIRECTIONS
MEDICINE LODGE, KS - 16 MILES SOUTH TO RATTLESNAKE RD
3/8 MILE EAST - NORTH INTO

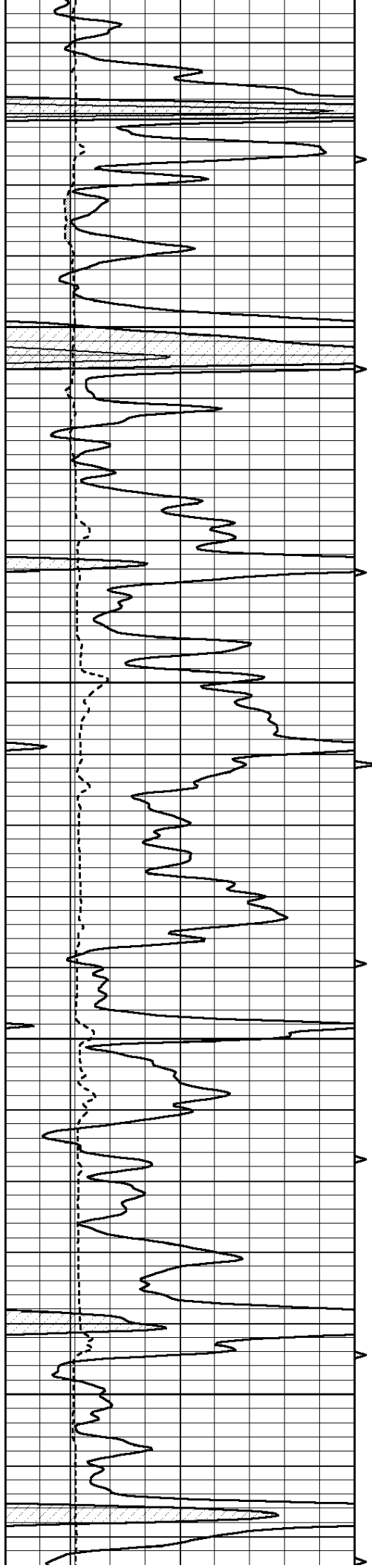
0	GAMMA RAY (GAPI)	150	ABHV	140	DELTA TIME (usec/ft)	40
6	CALIPER (in)	16	10 (ft3) 0	30	SONIC POROSITY (pu)	-10
			TBHV	0	ITT (msec)	20
			0 (ft3) 10			









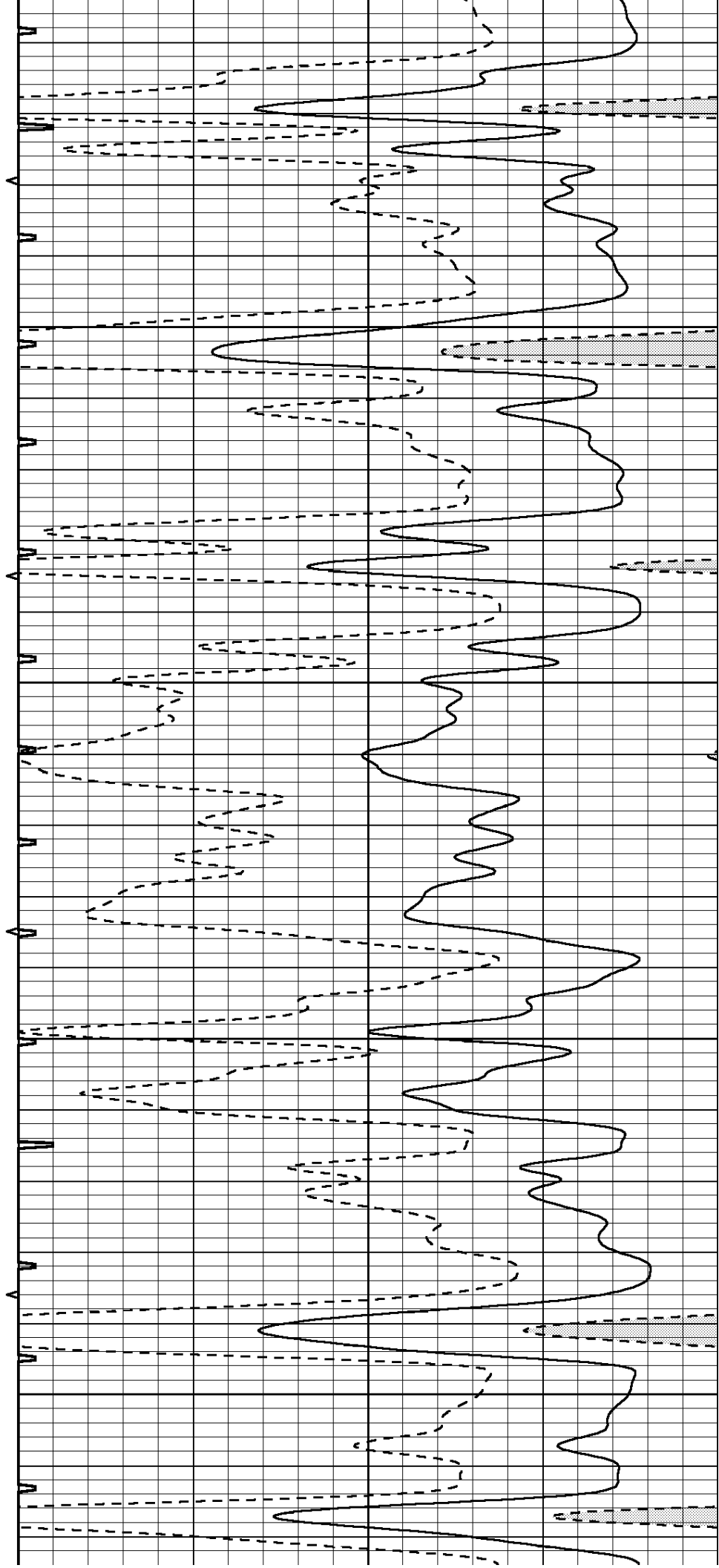


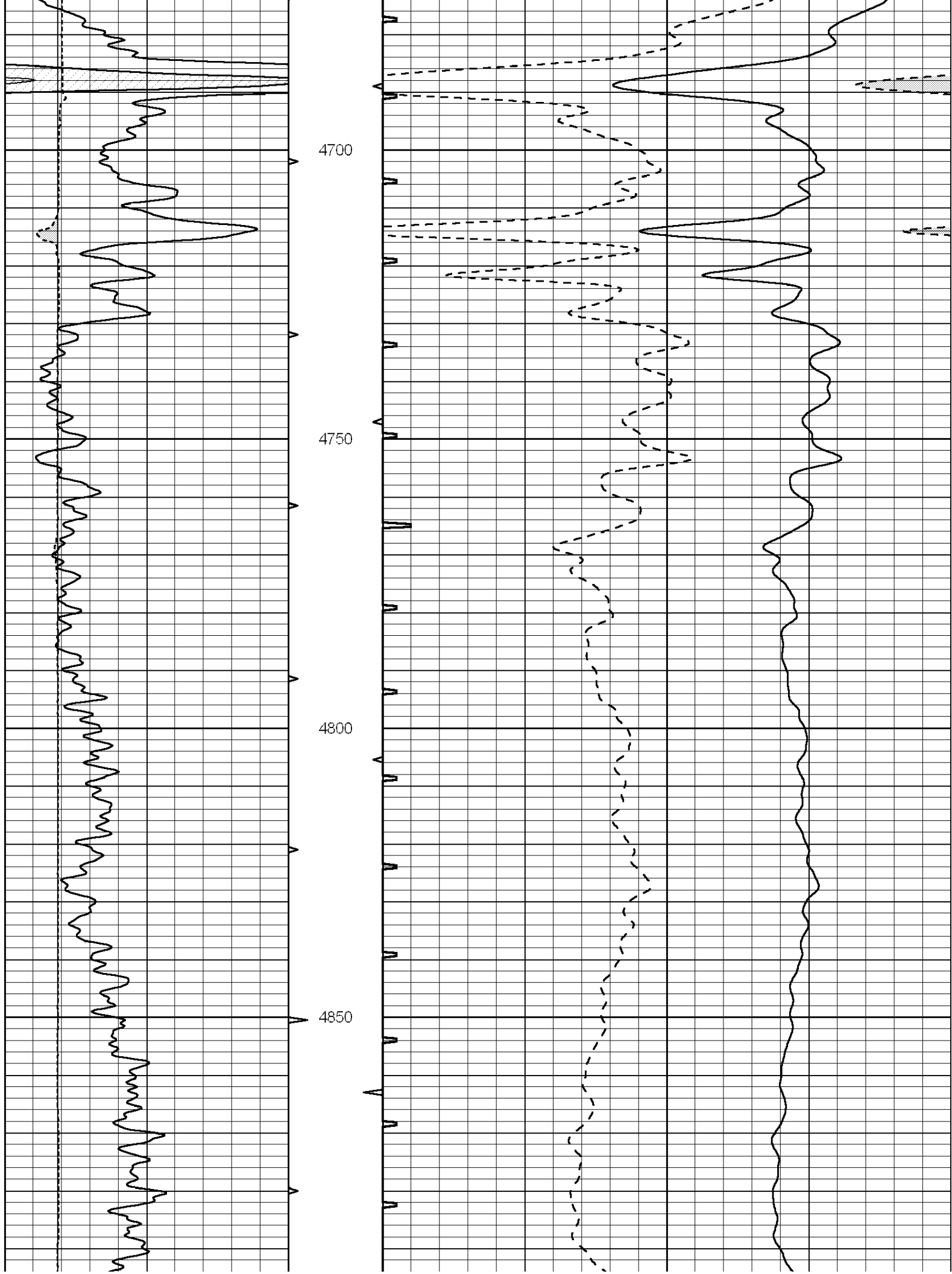
4500

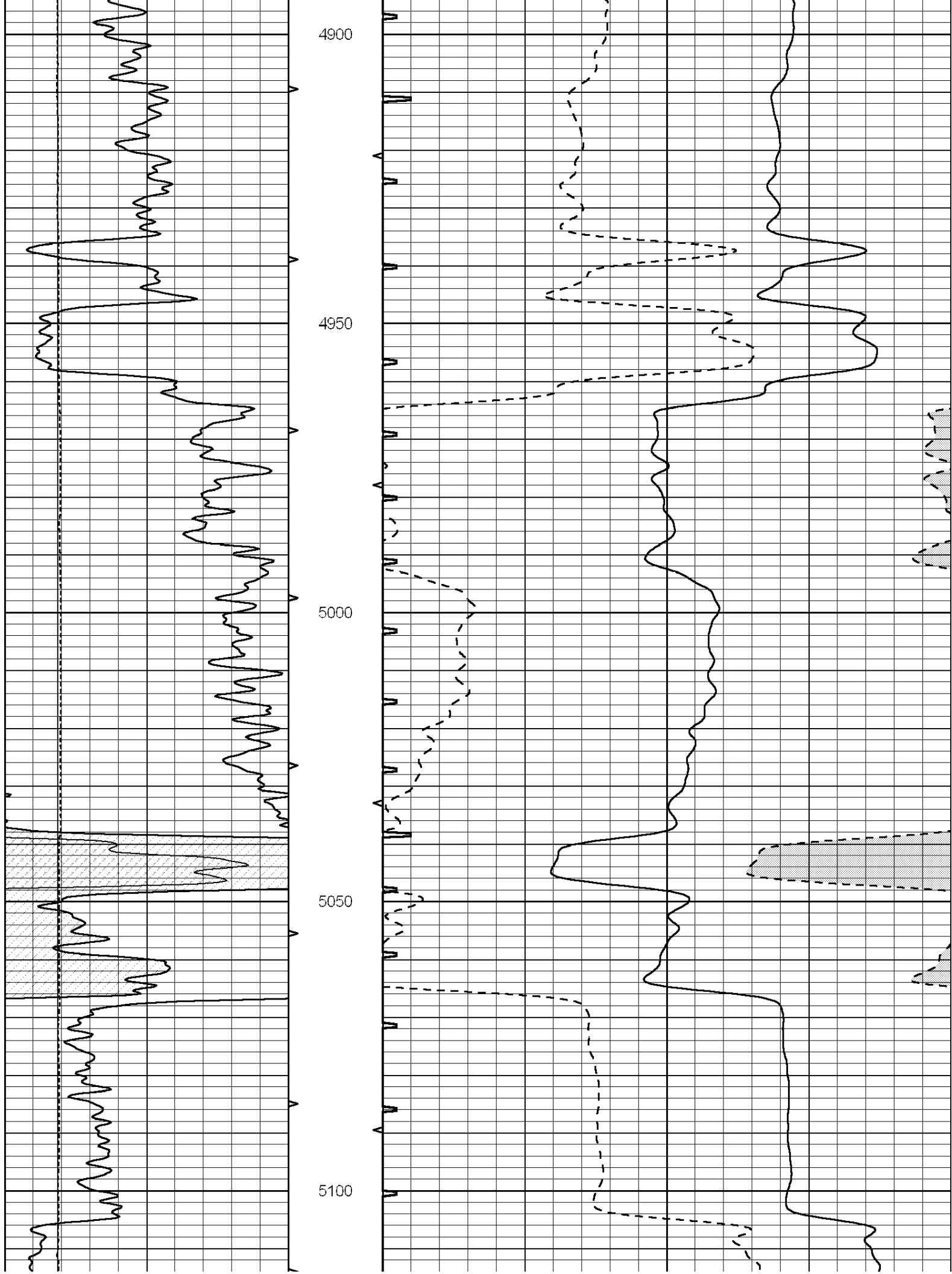
4550

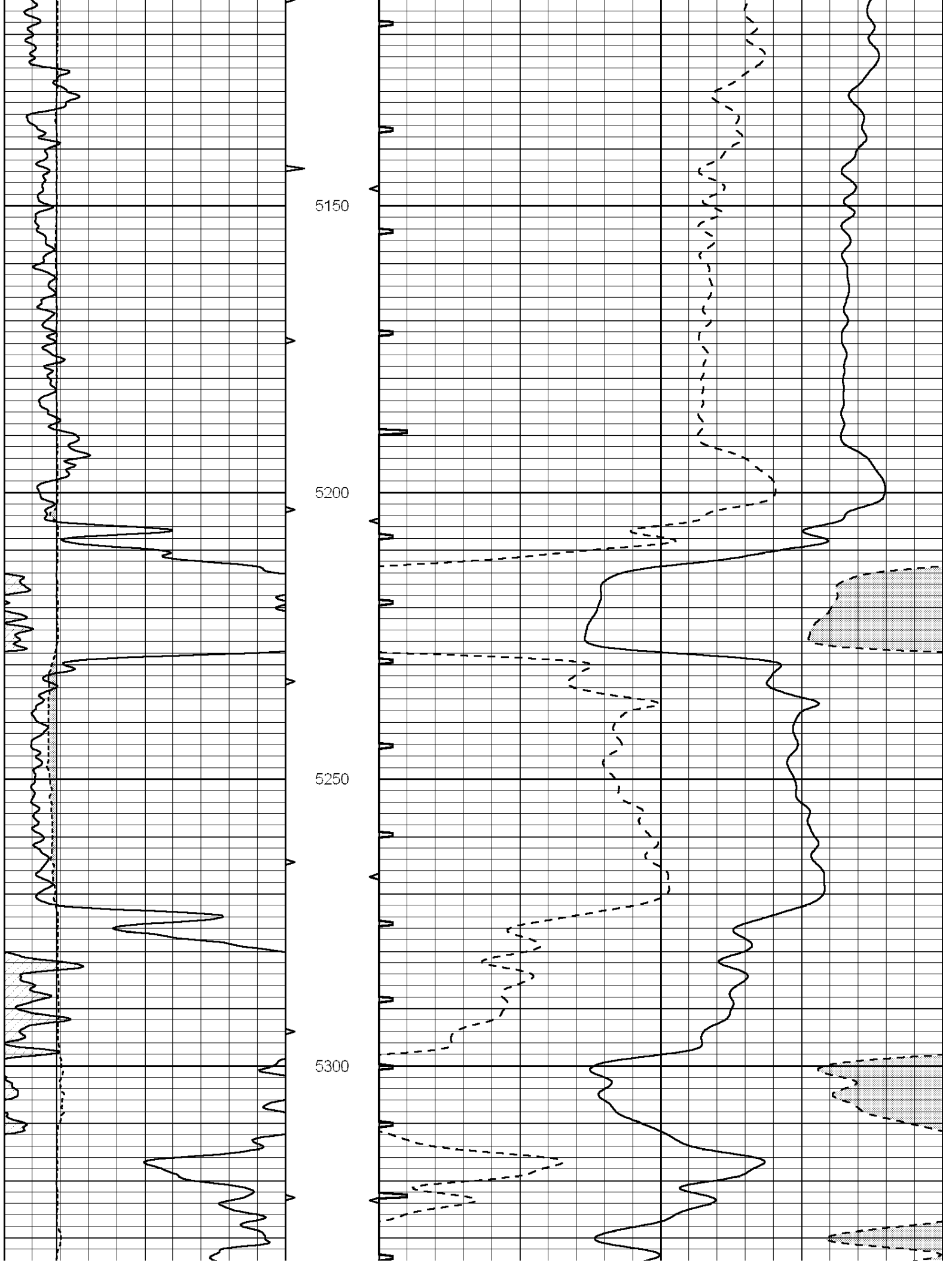
4600

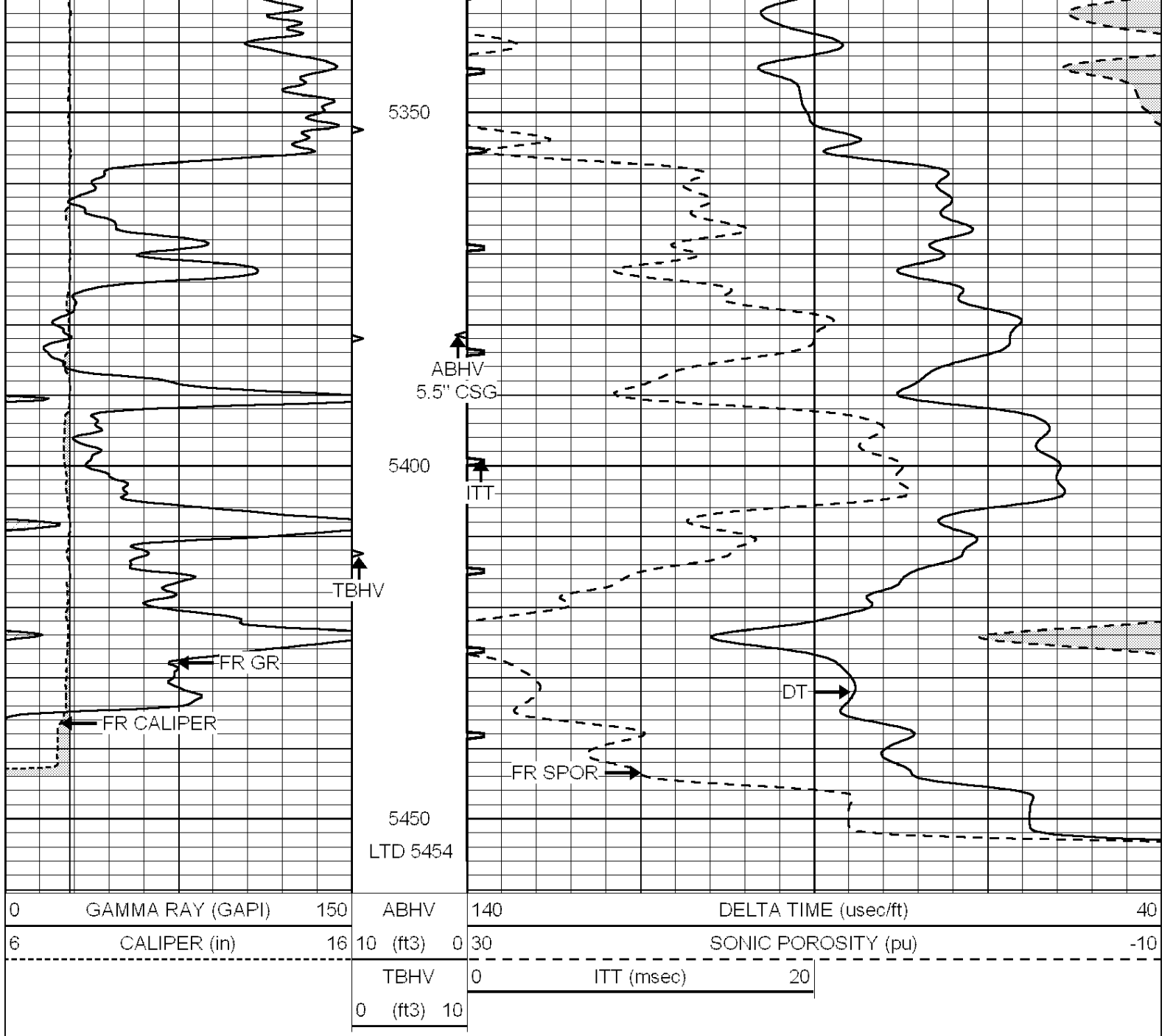
4650











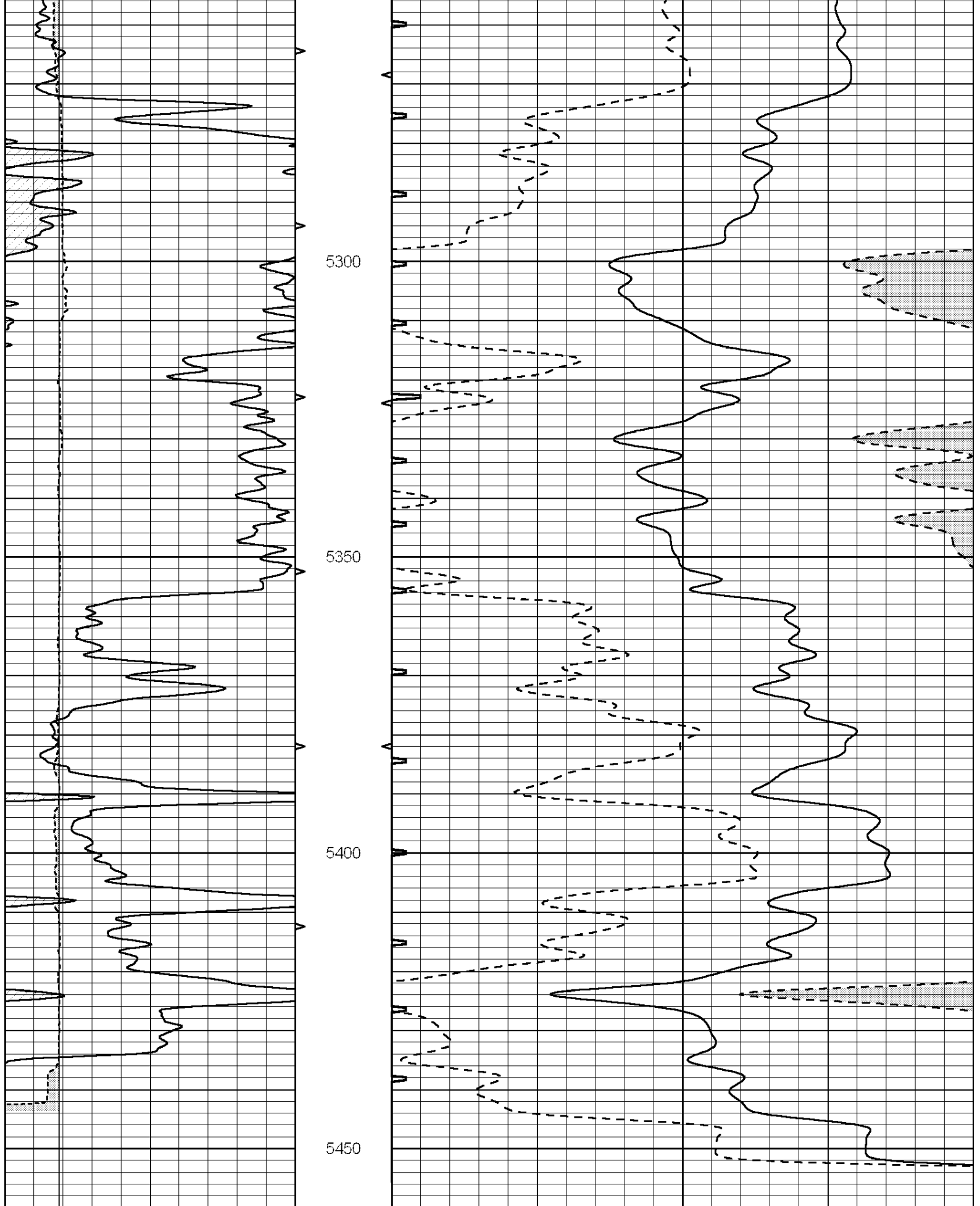
SUPERIOR
Hays,
Kansas

REPEAT SECTION

Database File: 007715pe.db
 Dataset Pathname: pass8.2
 Presentation Format: _slt
 Dataset Creation: Tue Sep 20 23:09:16 2011 by Calc Open-Cased 090629
 Charted by: Depth in Feet scaled 1:240

0	GAMMA RAY (GAPI)	150	ABHV	140	DELTA TIME (usec/ft)	40	
6	CALIPER (in)	16	10 (ft3)	0	30	SONIC POROSITY (pu)	-10
			TBHV	0	ITT (msec)	20	
			0 (ft3)	10			





0	GAMMA RAY (GAPI)	150	ABHV	140	DELTA TIME (usec/ft)	40
6	CALIPER (in)	16	10 (ft3)	0 30	SONIC POROSITY (pu)	-10
			TBHV	0	ITT (msec)	20

