



SUPERIOR
Hays,
Kansas

**MICRO
LOG**

Company LOTUS OPERATING CO., LLC.
Well SUZIE #6
Field STRANATHAN
County BARBER
State KANSAS

Company LOTUS OPERATING COMPANY, LLC.
Well SUZIE #6
Field STRANATHAN
County BARBER State KANSAS

Location: API # : 15-007-23766-0000
330' FSL & 2145' FWL
W/2 - SE - SE - SW
SEC 30 TWP 34S RGE 11W
Permanent Datum GROUND LEVEL Elevation 1398
Log Measured From KELLY BUSHING 13' A.G.L.
Drilling Measured From KELLY BUSHING
Other Services
CDL/CNL/PE
DIL/SON
Elevation
K.B. 1411
D.F. 1409
G.L. 1398

Date	9/20/11
Run Number	THREE
Depth Driller	5450
Depth Logger	5454
Bottom Logged Interval	5436
Top Log Interval	3600
Casing Driller	10 3/4" @ 255
Casing Logger	252
Bit Size	7 7/8
Type Fluid in Hole	CHEMICAL MUD
Density / Viscosity	9.4/52
pH / Fluid Loss	10.0/9.6
Source of Sample	FLOWLINE
Rim @ Meas. Temp	0.65 @ 97F
Rmf @ Meas. Temp	0.49 @ 97F
Rmc @ Meas. Temp	0.78 @ 97F
Source of Rmf / Rmc	MEASURED
Rim @ BHT	0.49 @ 129F
Time Circulation Stopped	2 HOURS
Time Logger on Bottom	
Maximum Recorded Temperature	129F
Equipment Number	680
Location	HAYS, KS.
Recorded By	JEFF GRONEMEG
Witnessed By	WES HANSEN

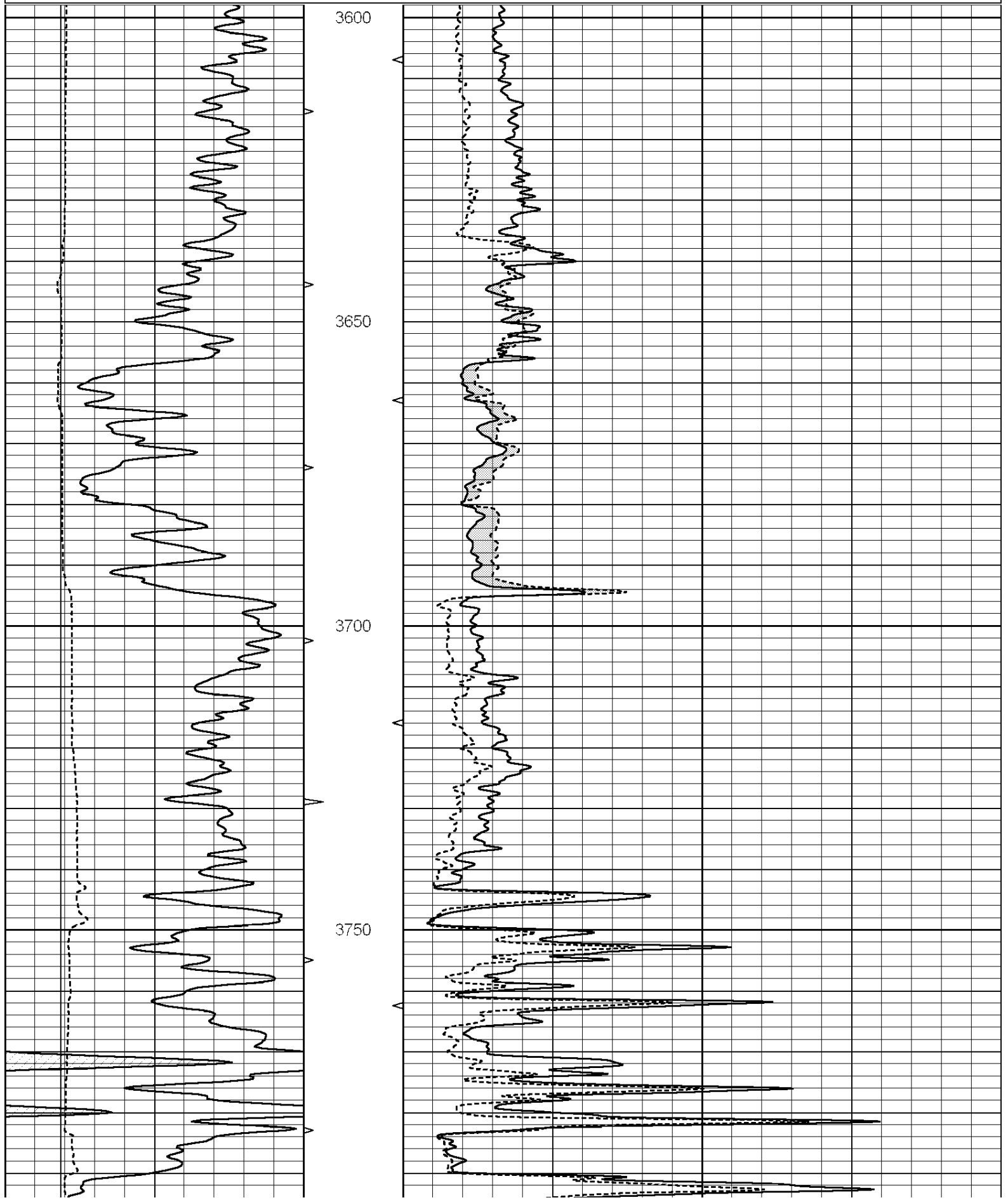
<<< Fold Here >>>

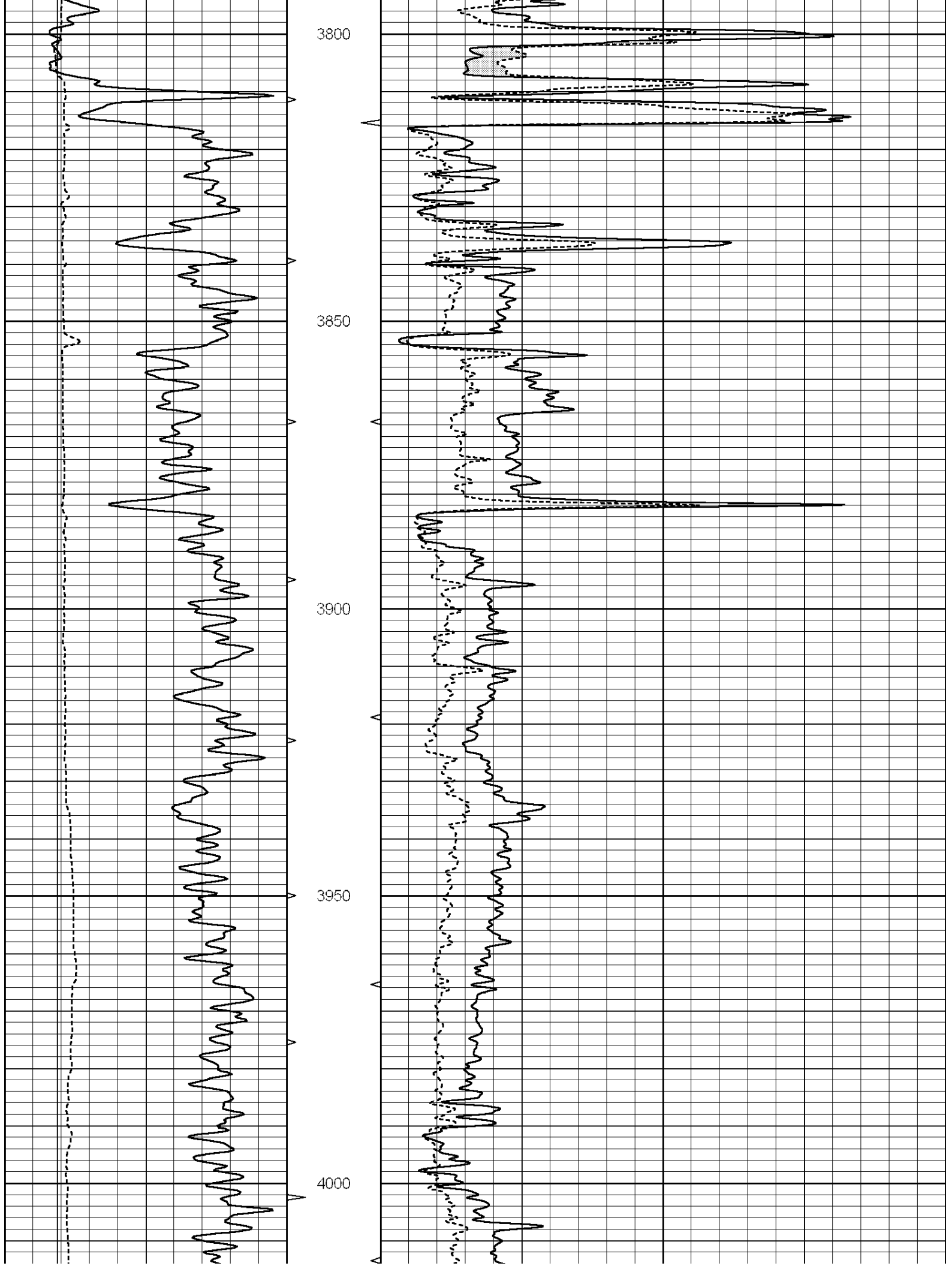
All interpretations are opinions based on inferences from electrical or other measurements and we cannot and do not guarantee the accuracy or correctness of any interpretation, and we shall not, except in the case of gross or willful negligence on our part, be liable or responsible for any loss, costs, damages, or expenses incurred or sustained by anyone resulting from any interpretation made by any of our officers, agents or employees. These interpretations are also subject to our general terms and conditions set out in our current Price Schedule.

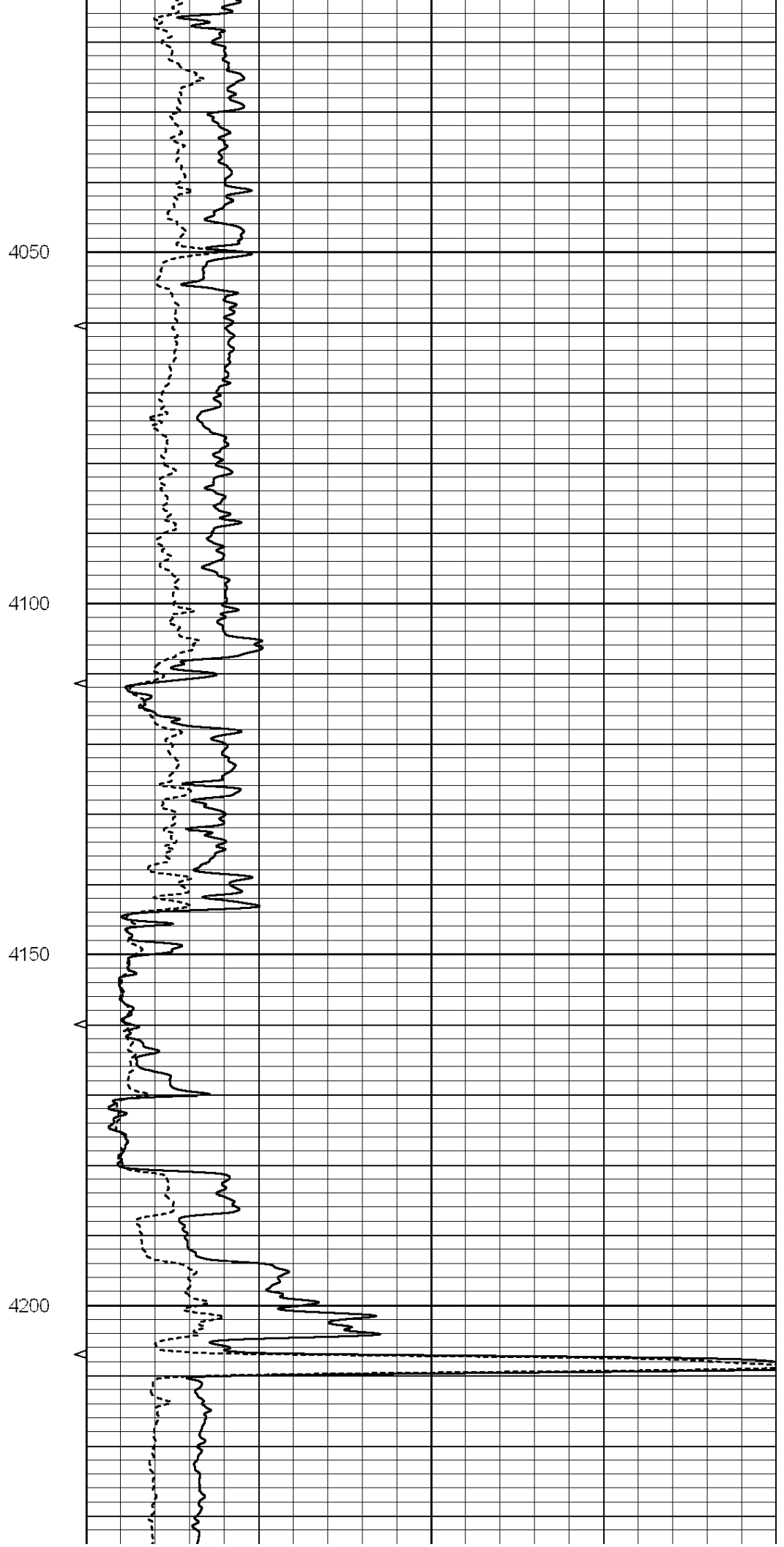
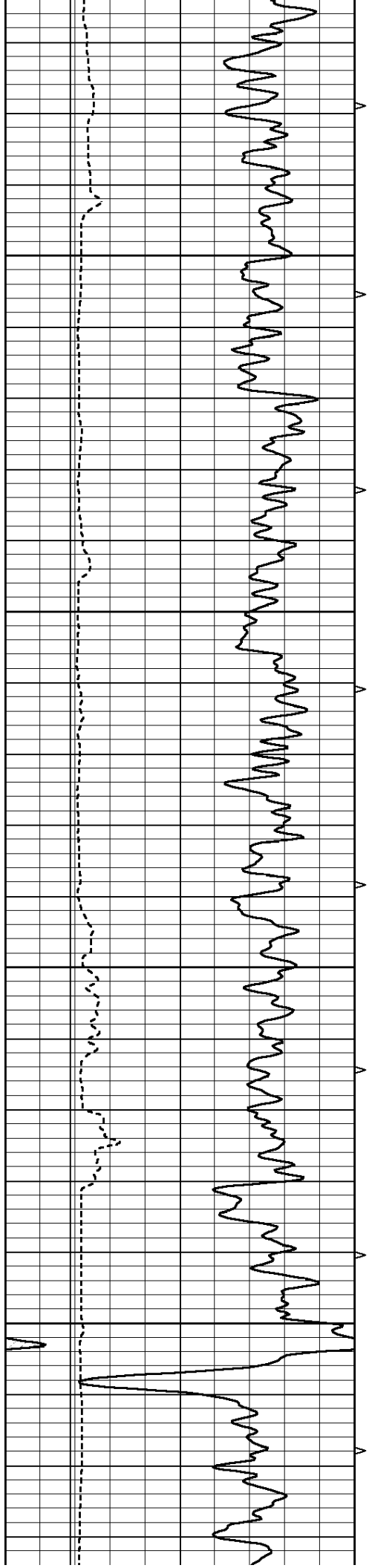
Comments

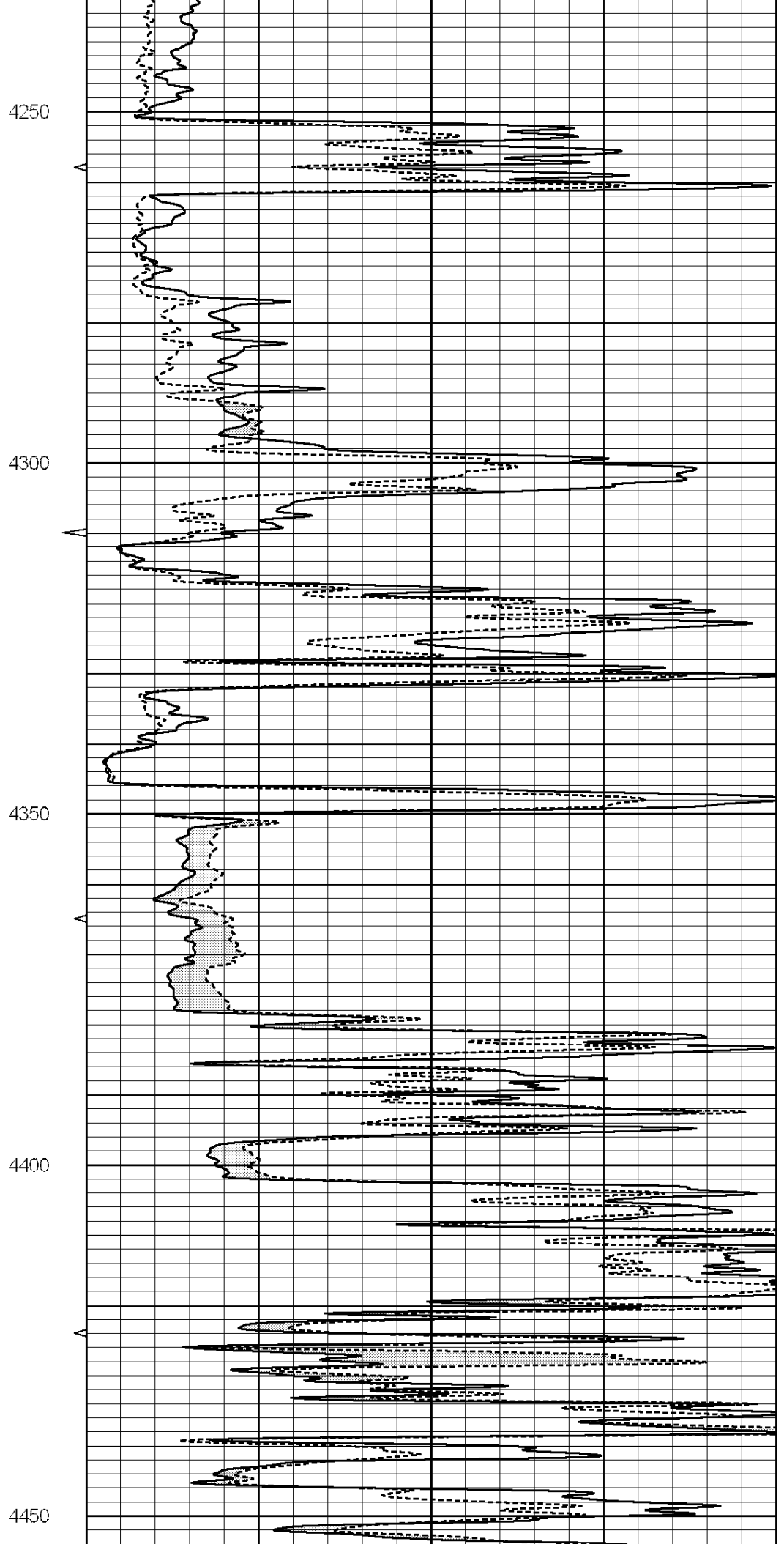
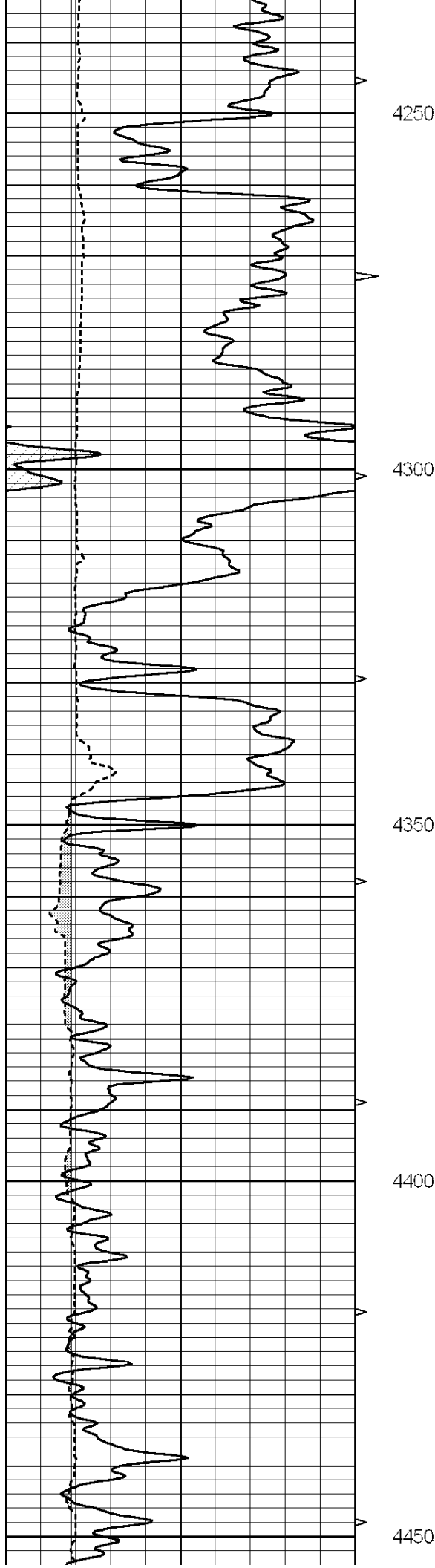
THANK YOU FOR USING SUPERIOR WELL SERVICE (785) 628-6395
DIRECTIONS
MEDICINE LODGE, KS - 16 MILES SOUTH TO RATTLESNAKE RD
3/8 MILE EAST - NORTH INTO

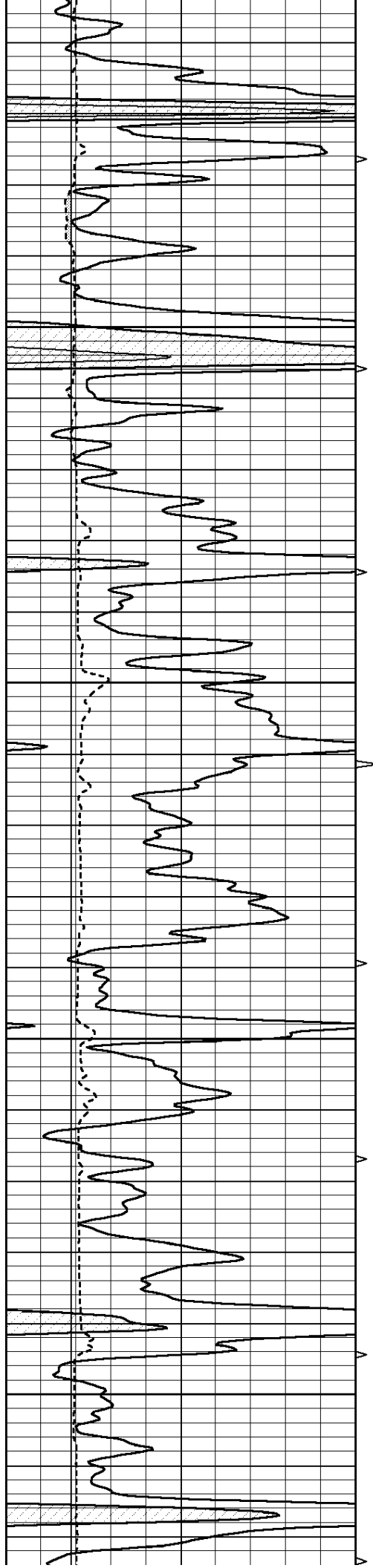
0	GAMMA RAY (GAPI)	150	ABHV	0	MEL1.5 (Ohm-m)	40
6	CALIPER (in)	16	10 (ft3)	0 0	MEL2.0 (Ohm-m)	40
			TBHV			
			0 (ft3)	10		









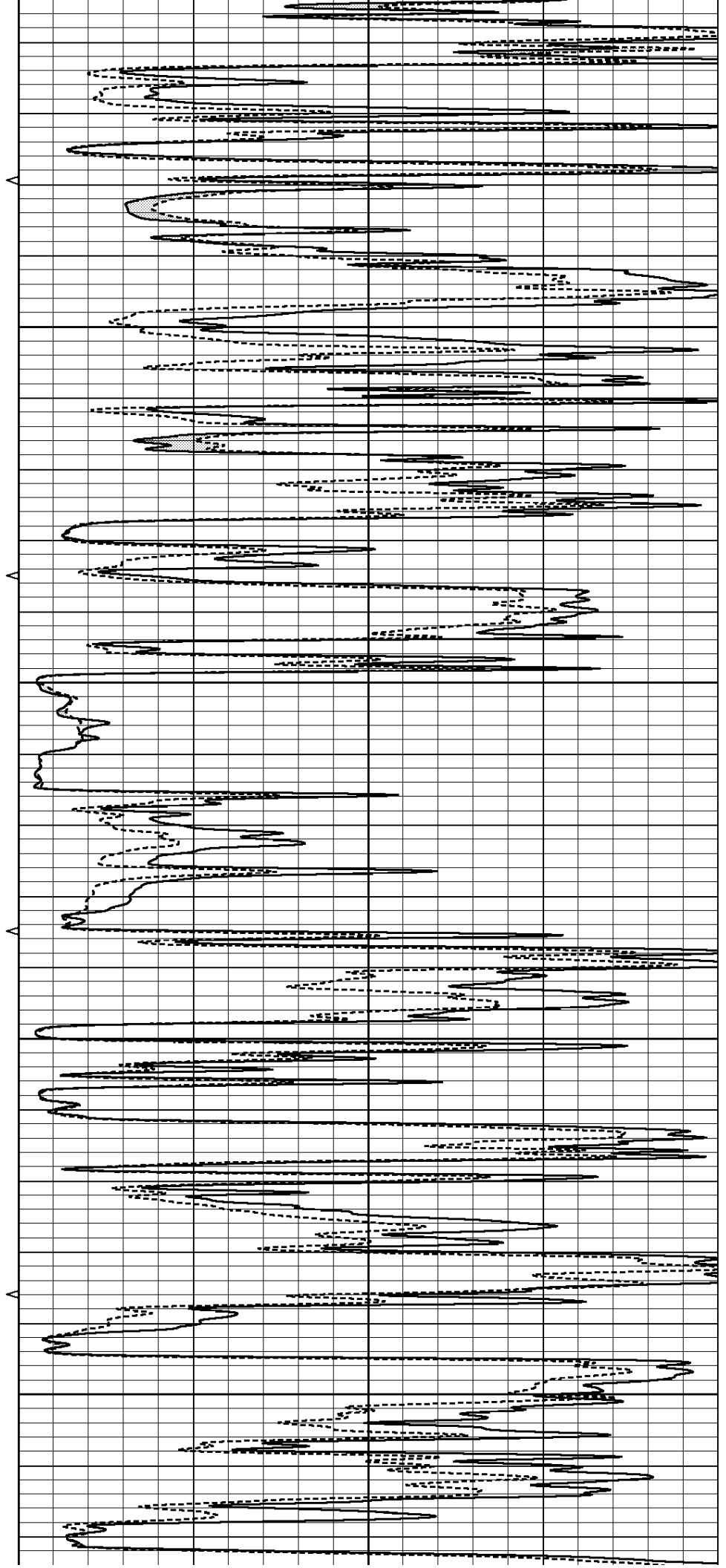


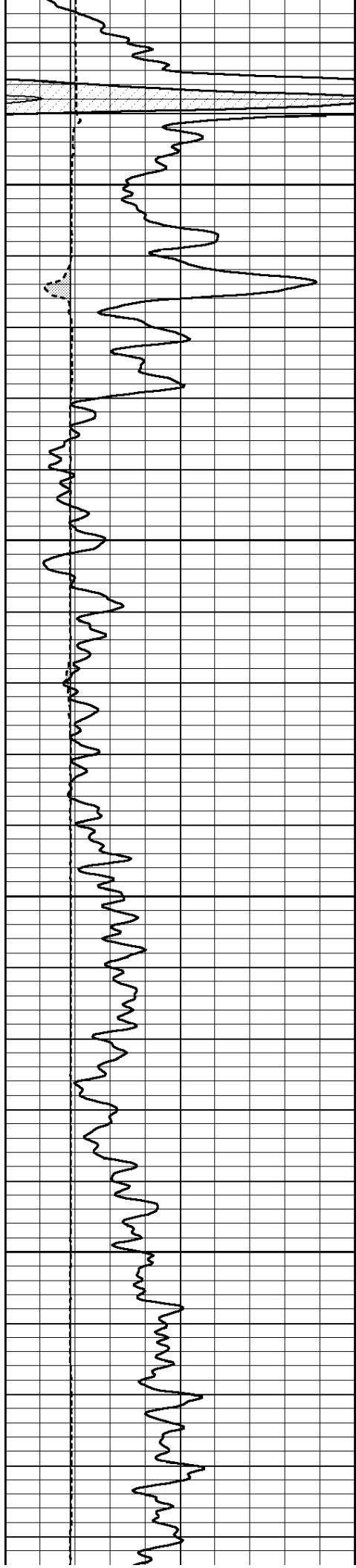
4500

4550

4600

4650



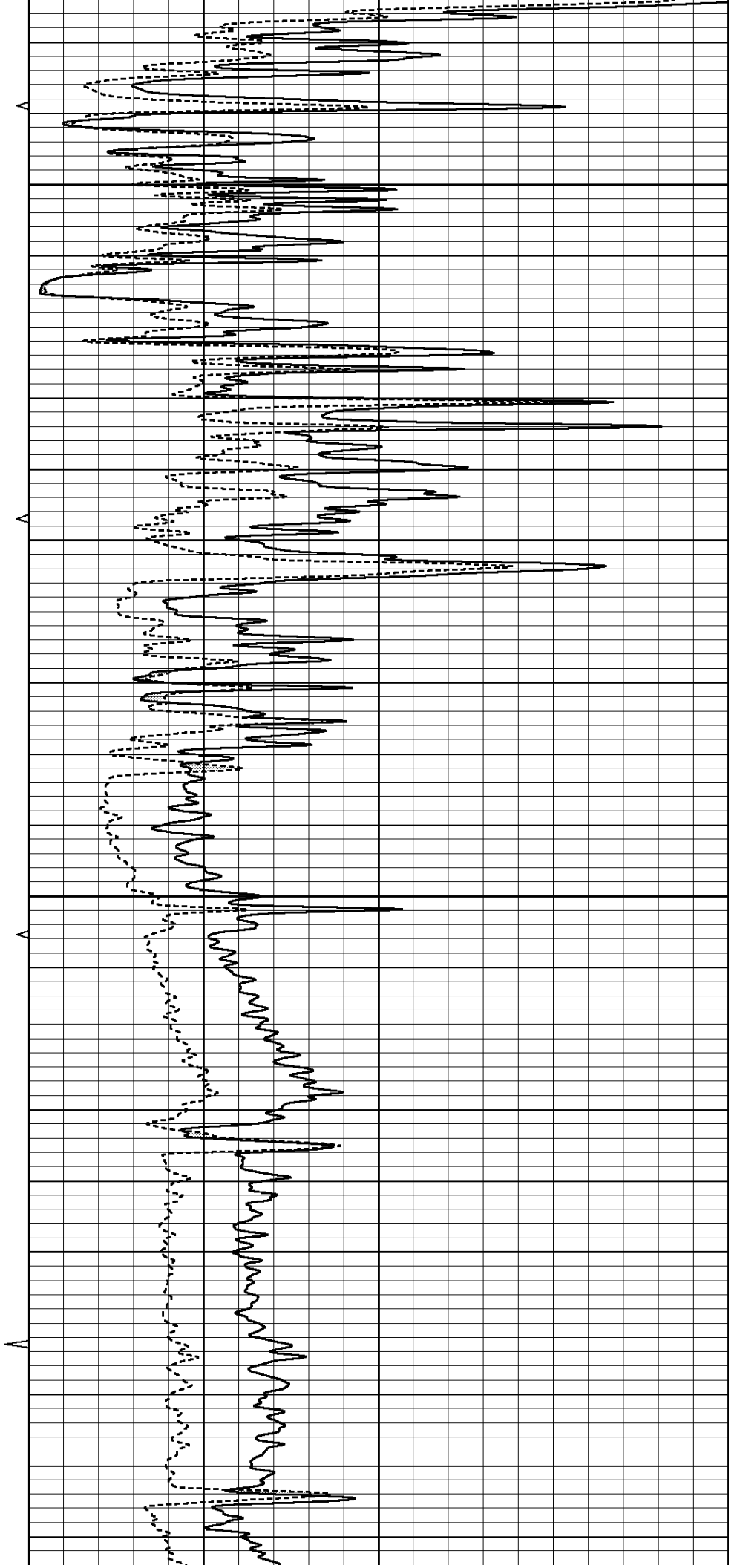


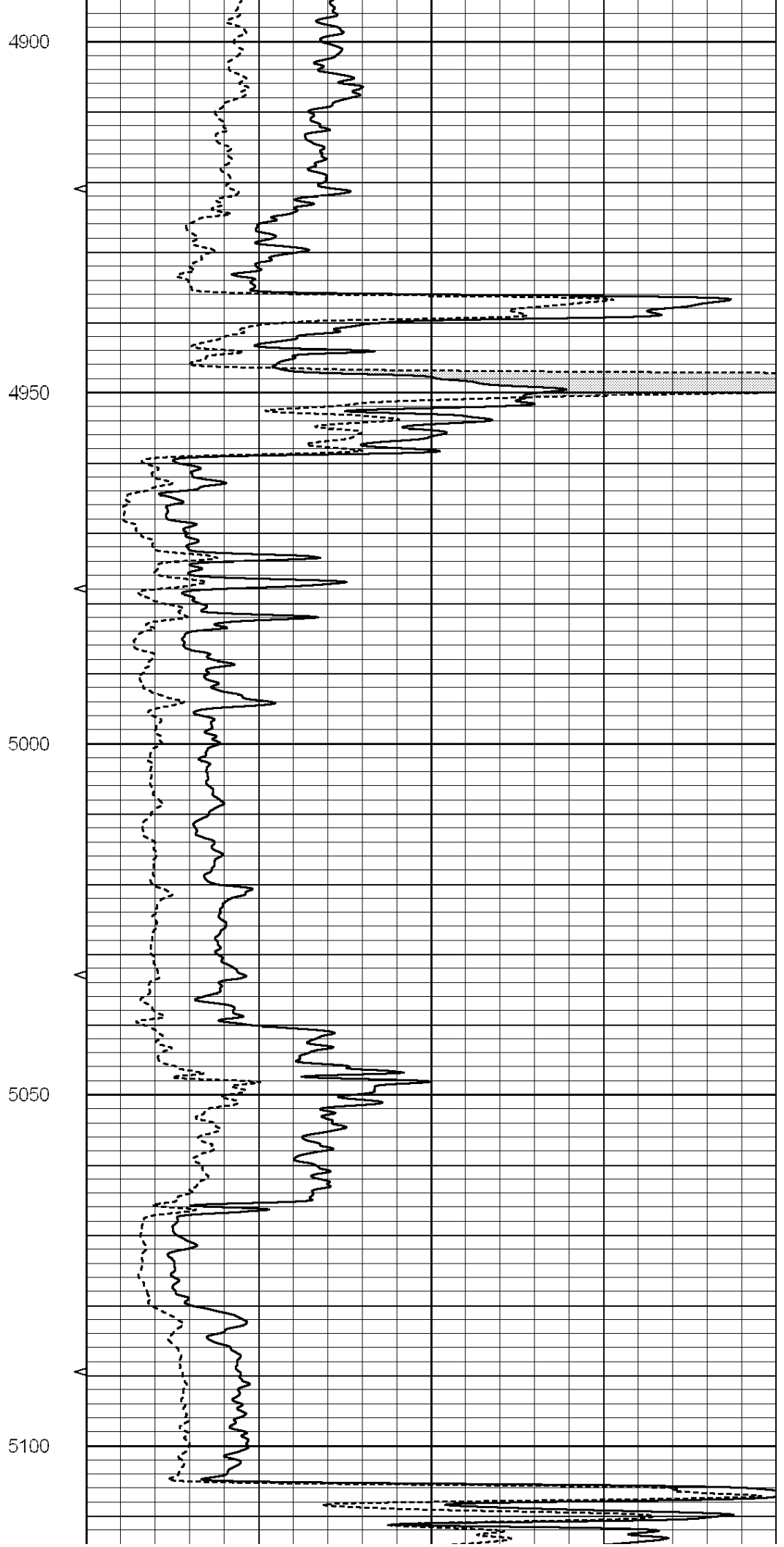
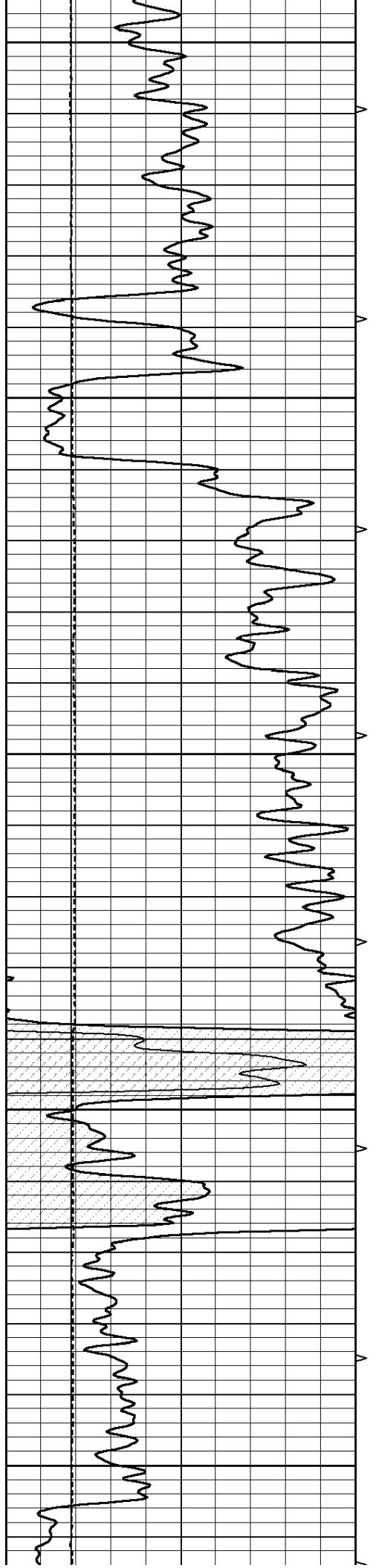
4700

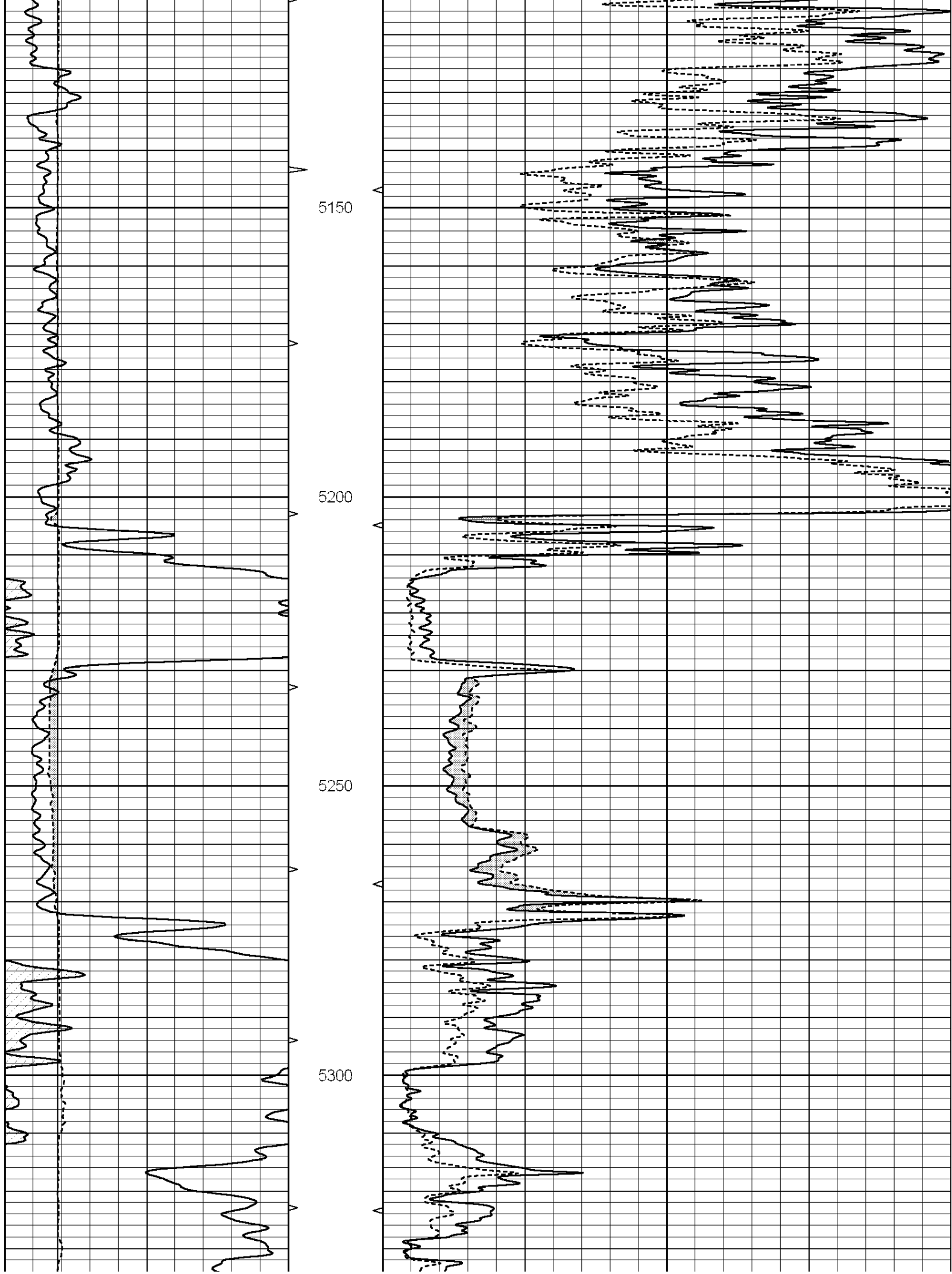
4750

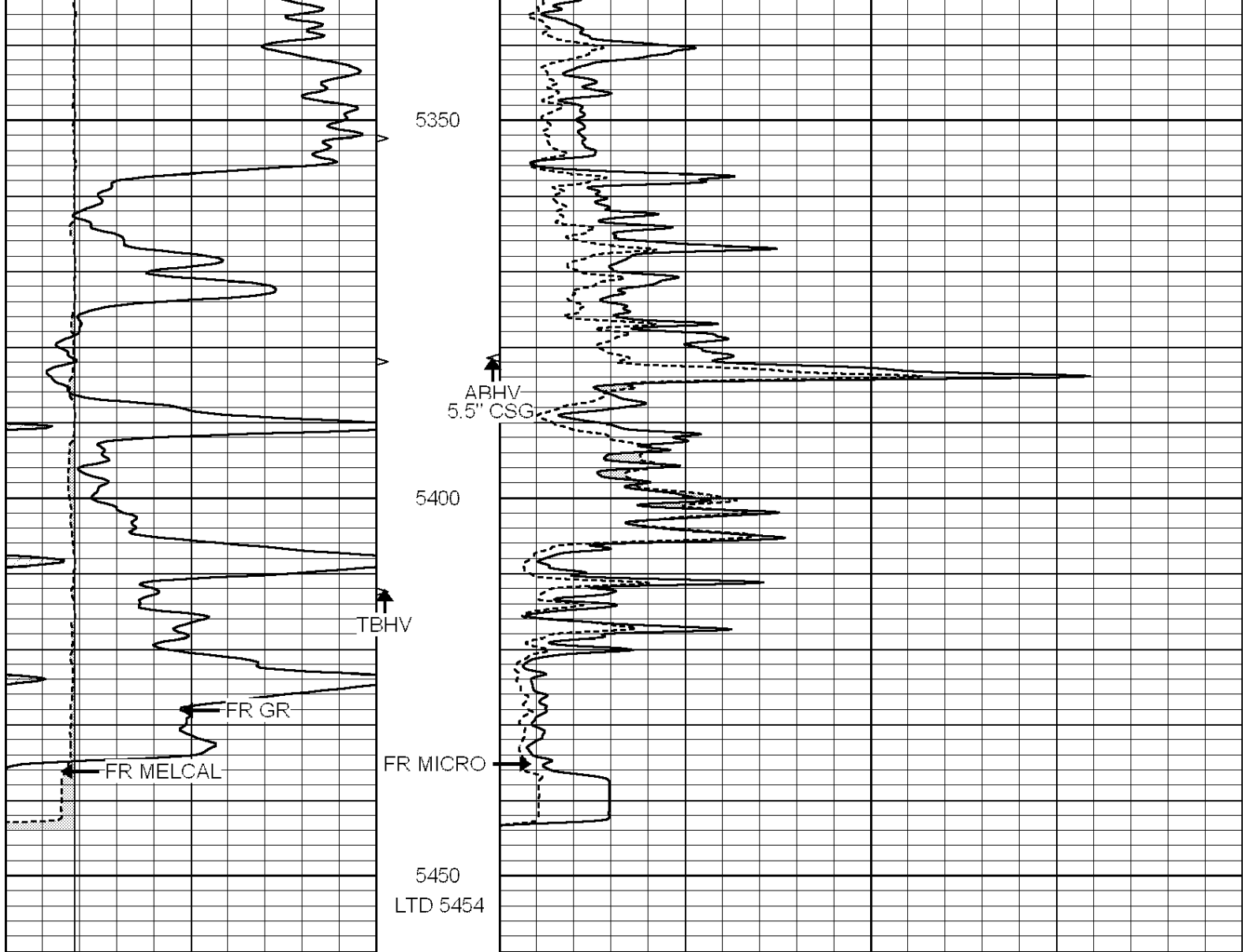
4800

4850









0	GAMMA RAY (GAPI)	150	ABHV	0	MEL1.5 (Ohm-m)	40
6	CALIPER (in)	16	10 (ft3)	0	MEL2.0 (Ohm-m)	40
			TBHV			
			0 (ft3)	10		

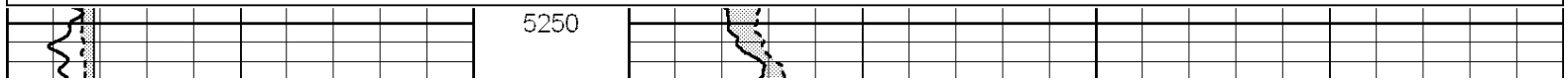


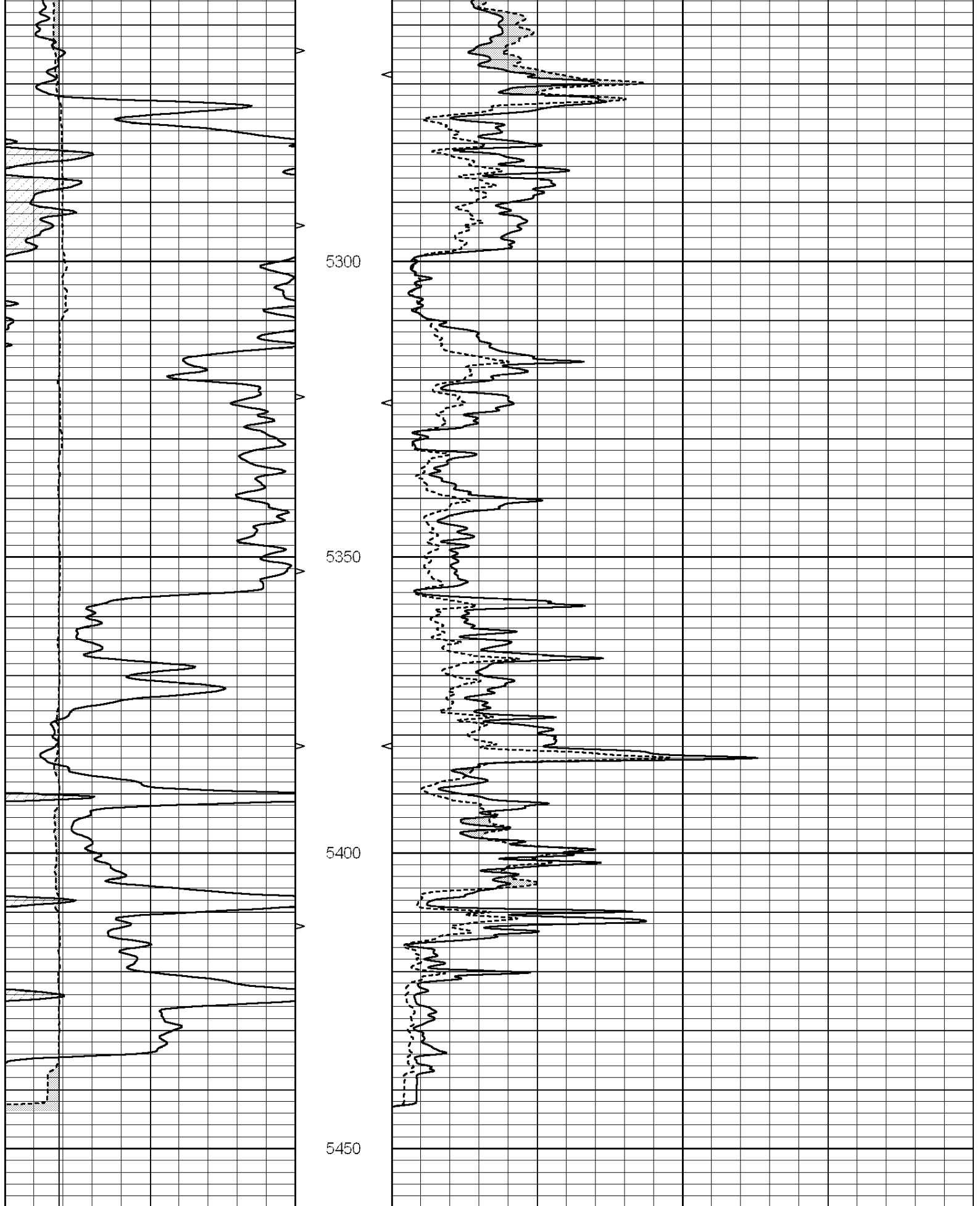
SUPERIOR
Hays,
Kansas

REPEAT SECTION

Database File: 007715pe.db
 Dataset Pathname: pass8.2
 Presentation Format: _micro
 Dataset Creation: Tue Sep 20 23:09:16 2011 by Calc Open-Cased 090629
 Charted by: Depth in Feet scaled 1:240

0	GAMMA RAY (GAPI)	150	ABHV	0	MEL1.5 (Ohm-m)	40
6	CALIPER (in)	16	10 (ft3)	0	MEL2.0 (Ohm-m)	40
			TBHV			
			0 (ft3)	10		





0	GAMMA RAY (GAPI)	150	ABHV	0	MEL1.5 (Ohm-m)	40
6	CALIPER (in)	16	10 (ft3)	0	MEL2.0 (Ohm-m)	40
			TBHV			

Calibration Report

Database File: 007715pe.db
 Dataset Pathname: pass9.1
 Dataset Creation: Tue Sep 20 23:22:08 2011 by Calc Open-Cased 090629

MICRO Calibration Report

Serial Number: MICRO6
 Tool Model: PROBE
 Performed: Sun Aug 28 22:47:42 2011

Caliper Calibration:	Gain=5.211	Offset=0.260
	Low Cal	High Cal
References	8.000	14.000
Readings	1.178	2.330

1.5" Calibration:	Gain=30.075	Offset=-0.650
	Low Cal	High Cal
References	0.000	20.000
Readings	0.004	1.196

2" Calibration:	Gain=40.041	Offset=-0.600
	Low Cal	High Cal
References	0.000	20.000
Readings	0.006	0.913

Gamma Ray Calibration Report

Serial Number: #8
 Tool Model: OPEN
 Performed: Mon Jun 13 16:56:43 2011

Calibrator Value:	150.0	GAPI
Background Reading:	0.0	cps
Calibrator Reading:	175.0	cps
Sensitivity:	0.8371	GAPI/cps