



**SUPERIOR**  
Hays,  
Kansas

**COMPENSATED**  
DENSITY / NEUTRON  
PE LOG

Company CORAL COAST PETROLEUM, LLC  
Well #1 STEPHENS  
Field MORRISON NORTHEAST  
County CLARK  
State KANSAS

Company CORAL COAST PETROLEUM, LLC.  
Well #1 STEPHENS  
Field MORRISON NORTHEAST  
County CLARK State KANSAS

Location: API # : 15-025-10027-0000  
1980' FSL & 1320' FEL  
N/2 - SE  
SEC 15 TWP 32S RGE 21W  
Permanent Datum GROUND LEVEL Elevation 2050  
Log Measured From KELLY BUSHING 10' A.G.L.  
Drilling Measured From KELLY BUSHING  
Other Services  
DIL/MEL  
SONIC  
Elevation  
K.B. 2060  
D.F. 2058  
G.L. 2050

|                              |                   |
|------------------------------|-------------------|
| Date                         | 2/13/11           |
| Run Number                   | ONE               |
| Depth Driller                | 6840              |
| Depth Logger                 | 6842              |
| Bottom Logged Interval       | 6818              |
| Top Log Interval             | 4200              |
| Casing Driller               | 8 5/8 @ 592       |
| Casing Logger                | 591               |
| Bit Size                     | 7 7/8             |
| Type Fluid in Hole           | CHEMICAL MUD      |
| Density / Viscosity          | 9.1/47            |
| pH / Fluid Loss              | 10.0/12.4         |
| Source of Sample             | FLOWLINE          |
| Rim @ Meas. Temp             | .52 @ 62F         |
| Rmf @ Meas. Temp             | .39 @ 62F         |
| Rmc @ Meas. Temp             | .62 @ 62F         |
| Source of Rmf / Rmc          | MEASURED          |
| Rim @ BHT                    | .22 @ 141F        |
| Time Circulation Stopped     | 3 HOURS           |
| Time Logger on Bottom        |                   |
| Maximum Recorded Temperature | 141F              |
| Equipment Number             | 680               |
| Location                     | HAYS, KS.         |
| Recorded By                  | JASON CAPPELLUCCI |
| Witnessed By                 | TIM PRIEST        |

<<< Fold Here >>>

All interpretations are opinions based on inferences from electrical or other measurements and we cannot and do not guarantee the accuracy or correctness of any interpretation, and we shall not, except in the case of gross or willful negligence on our part, be liable or responsible for any loss, costs, damages, or expenses incurred or sustained by anyone resulting from any interpretation made by any of our officers, agents or employees. These interpretations are also subject to our general terms and conditions set out in our current Price Schedule.

Comments

THANK YOU FOR USING SUPERIOR WELL SERVICE (785) 628-6395  
DIRECTIONS  
PROTECTION, KS. - 6 E. - 4 MILES N. INTO

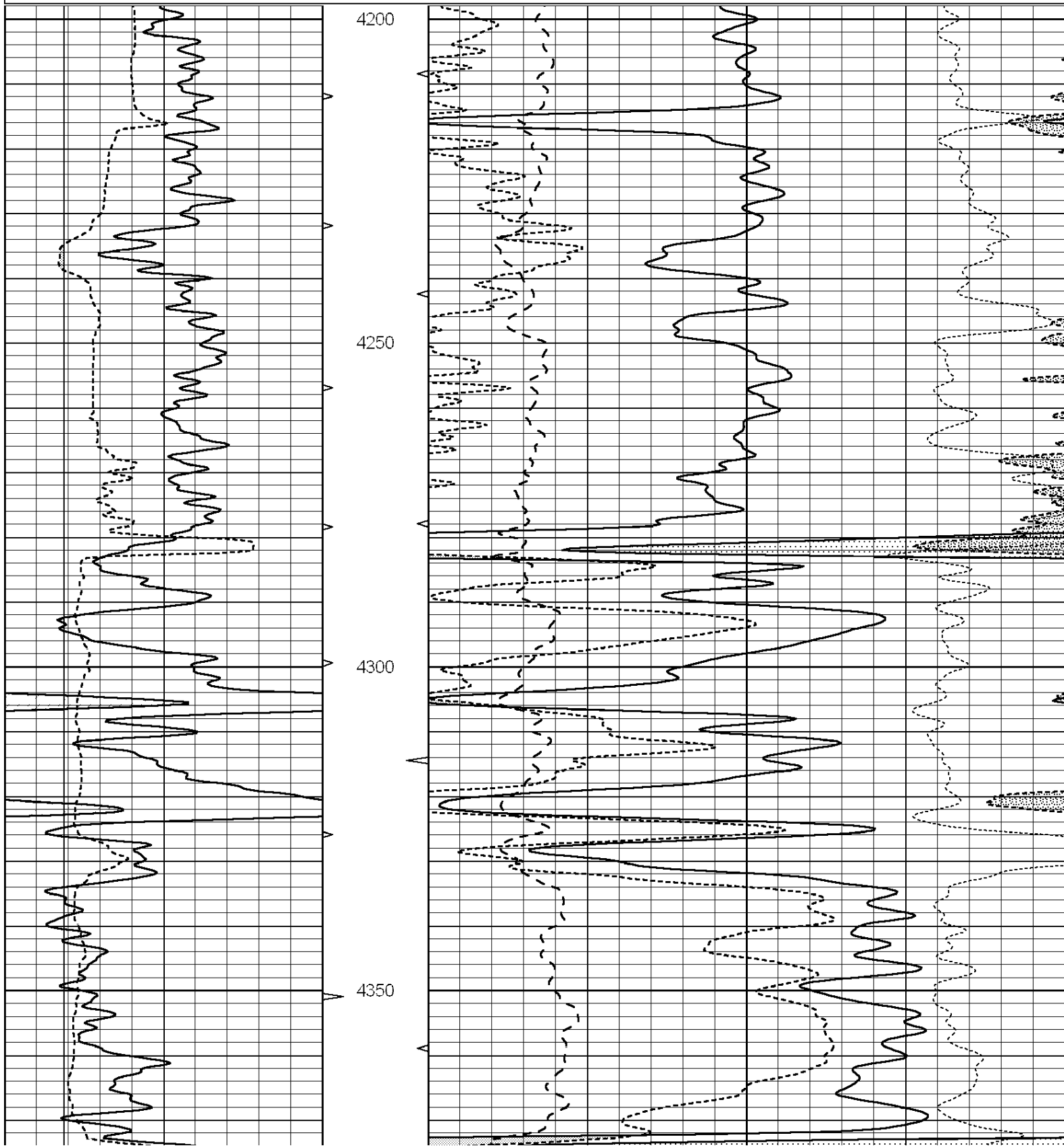


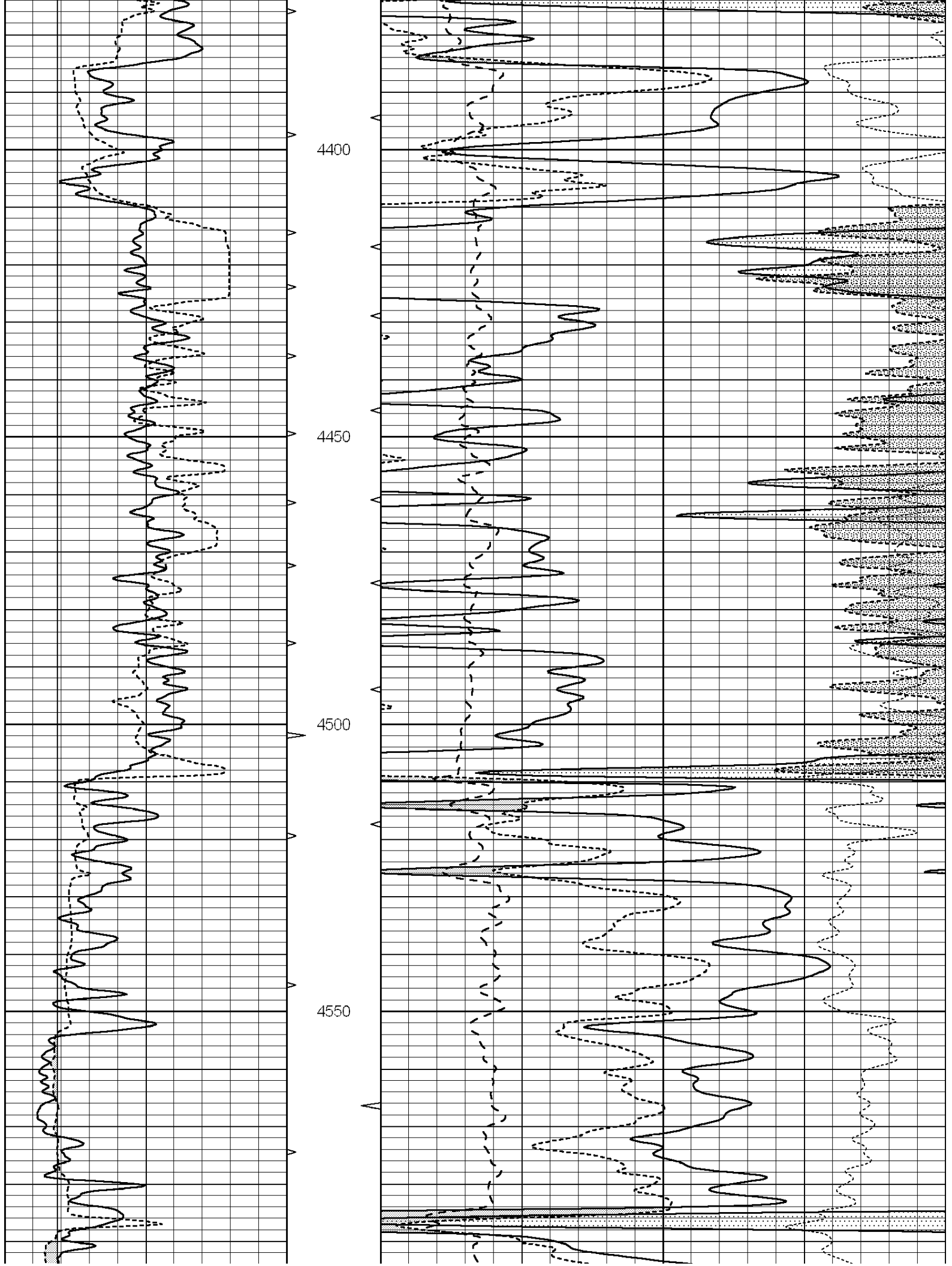
**SUPERIOR**  
Hays,  
Kansas

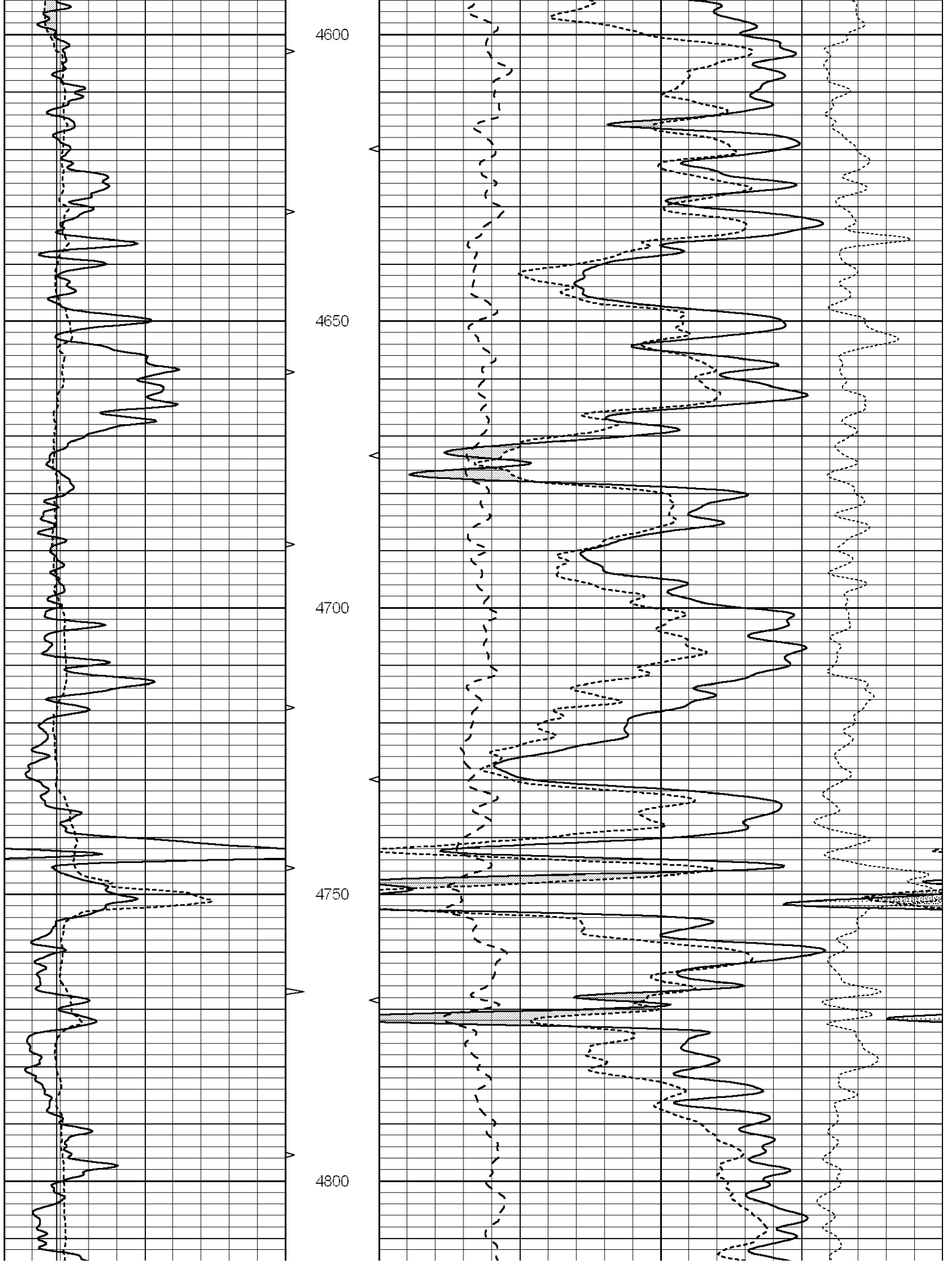
# MAIN SECTION

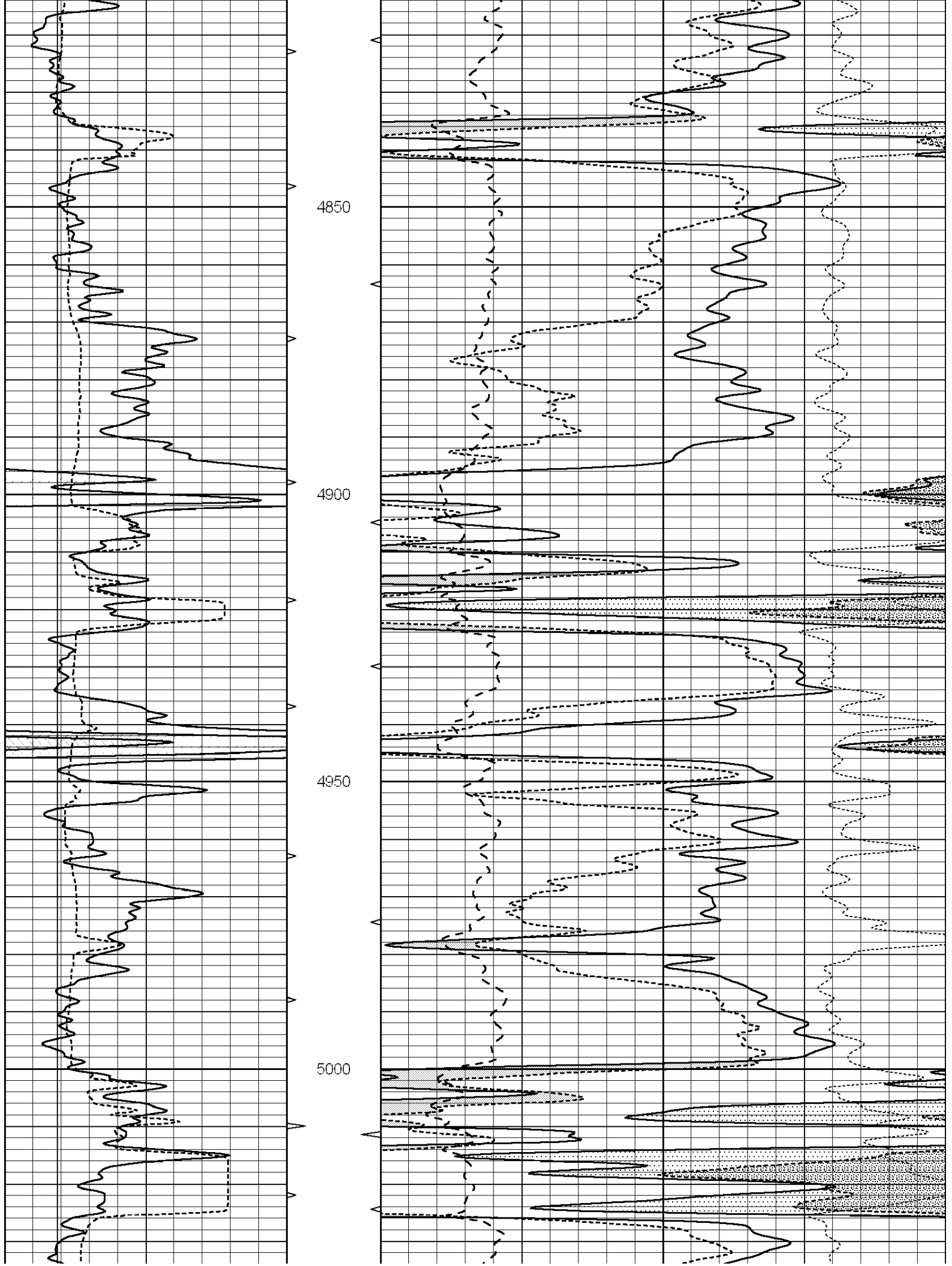
Database File: 006690pe.db  
 Dataset Pathname: pass3.1  
 Presentation Format: \_ldt\_neu  
 Dataset Creation: Sun Feb 13 12:57:18 2011 by Calc Open-Cased 090629  
 Charted by: Depth in Feet scaled 1:240

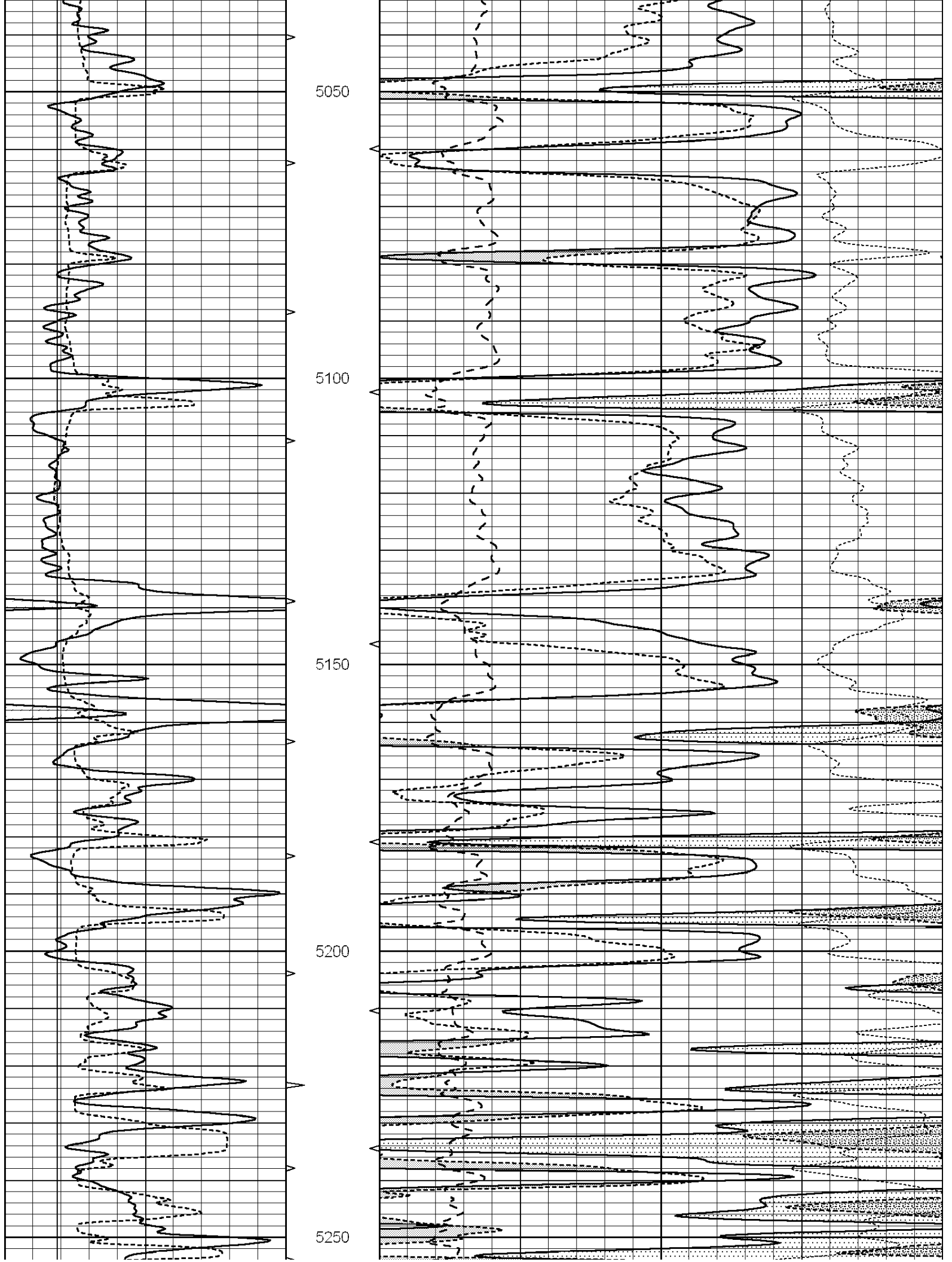
|   |                  |     |          |    |                          |                          |       |                   |      |
|---|------------------|-----|----------|----|--------------------------|--------------------------|-------|-------------------|------|
| 0 | GAMMA RAY (GAPI) | 150 | ABHV     | 30 | COMPENSATED DENSITY (pu) |                          | -10   |                   |      |
| 6 | CALIPER (in)     | 16  | 10 (ft3) | 0  | 30                       | COMPENSATED NEUTRON (pu) |       | -10               |      |
|   |                  |     | TBHV     | 0  | PE                       | 10                       | -0.25 | CORRECTION (g/cc) | 0.25 |
|   |                  |     | 0 (ft3)  | 10 |                          |                          |       |                   |      |

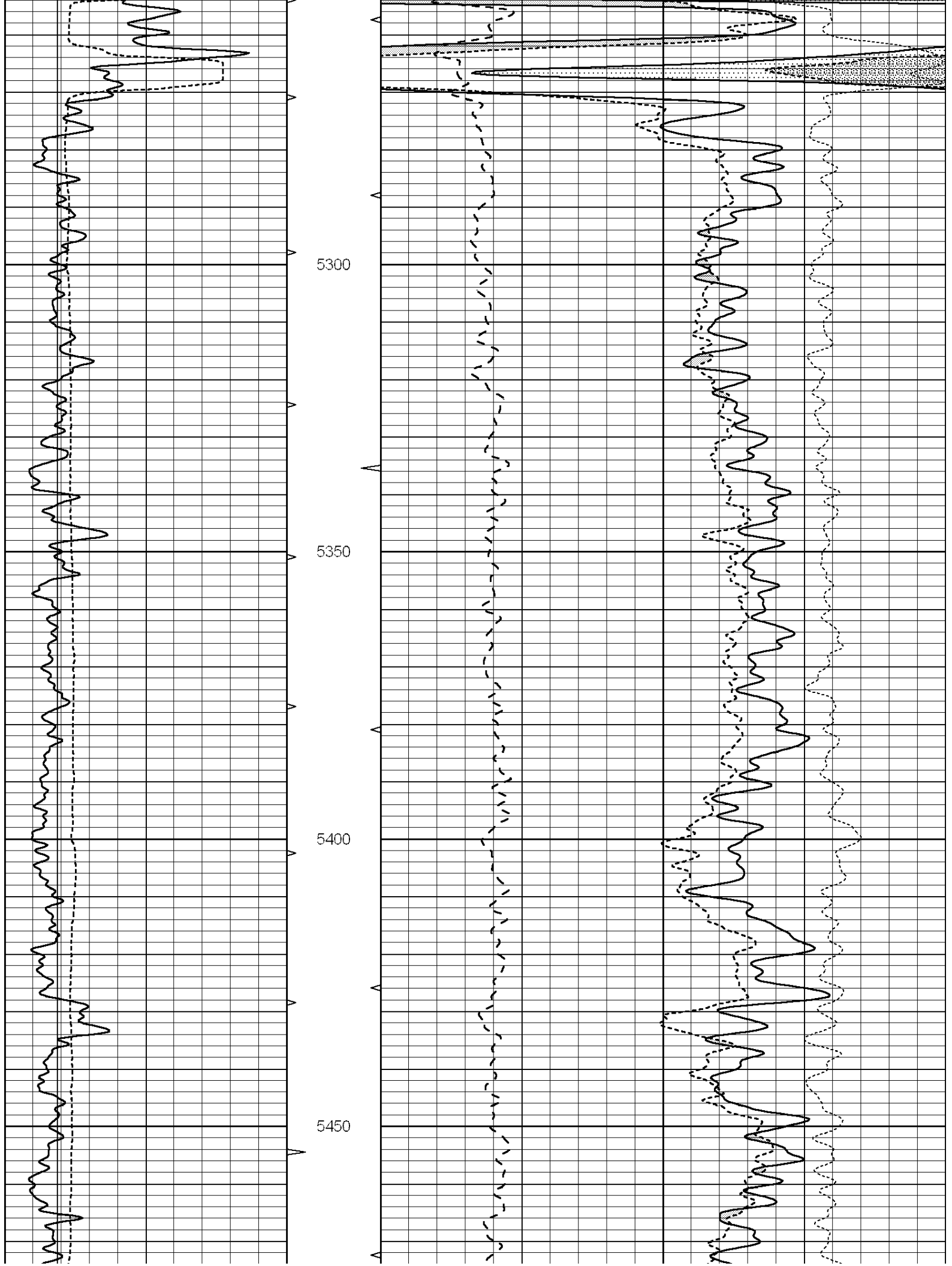


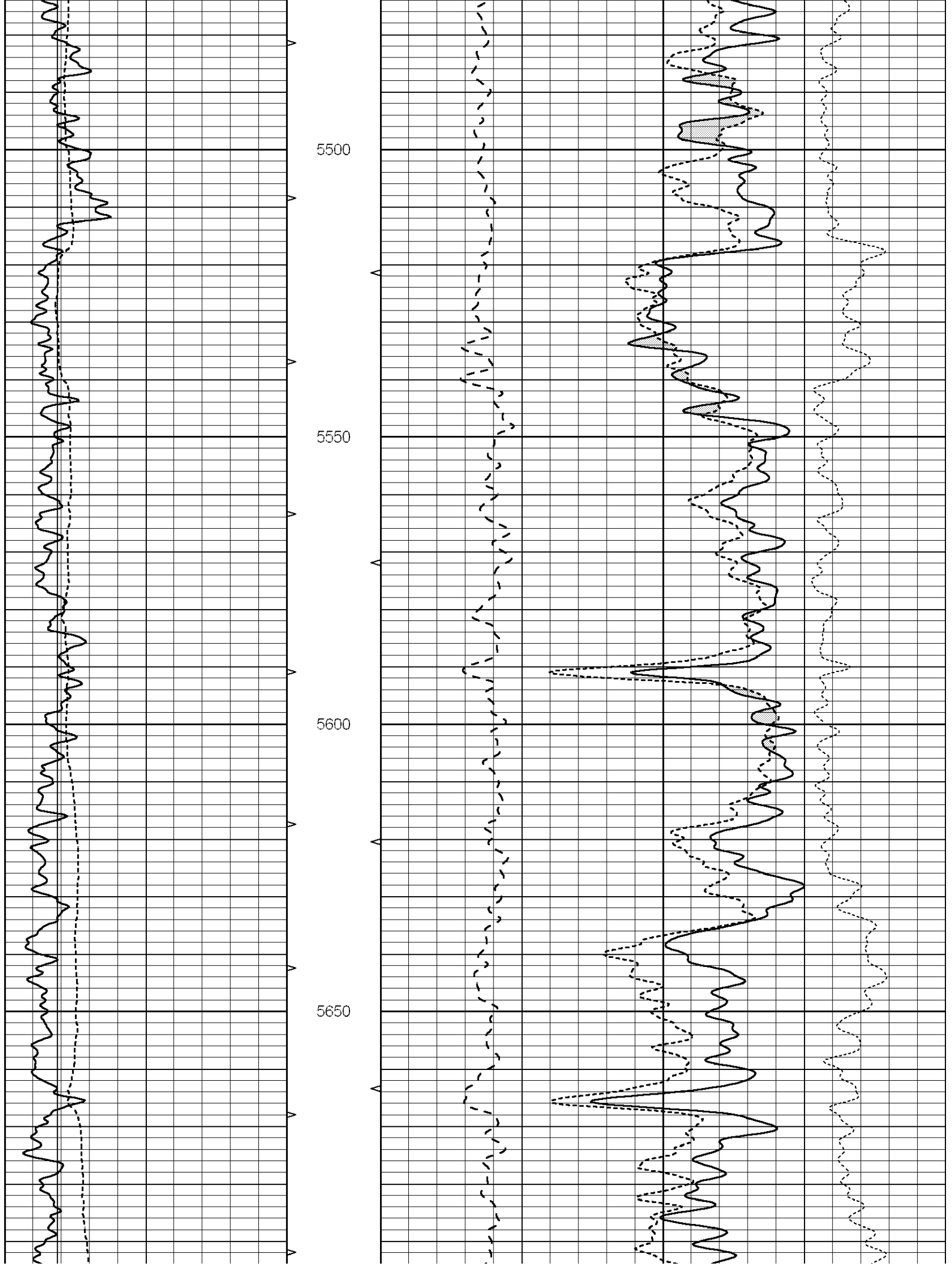


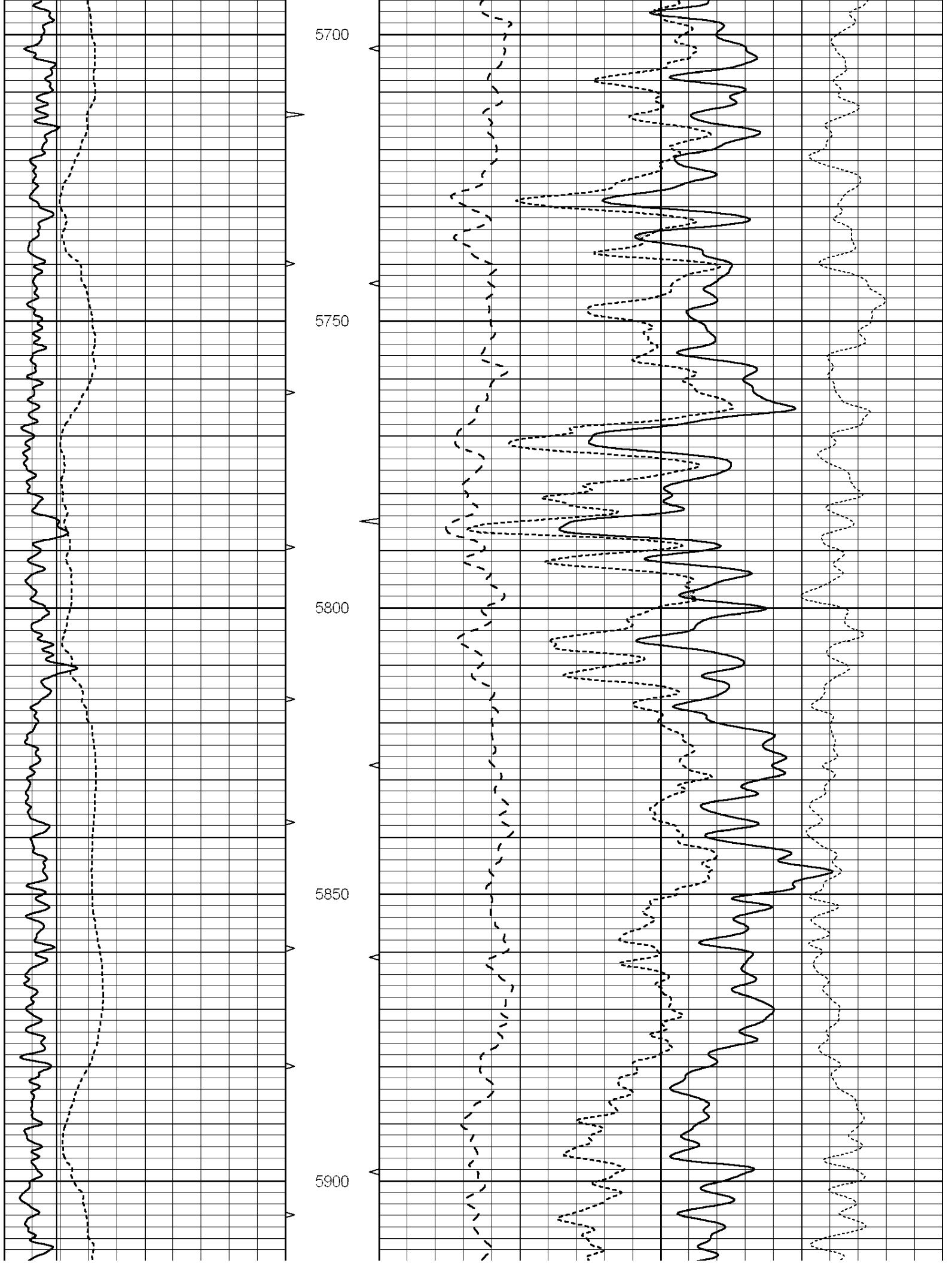


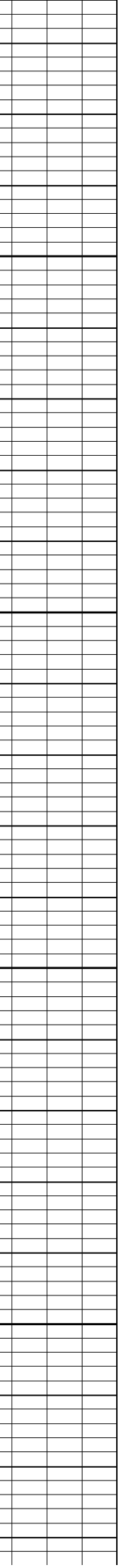
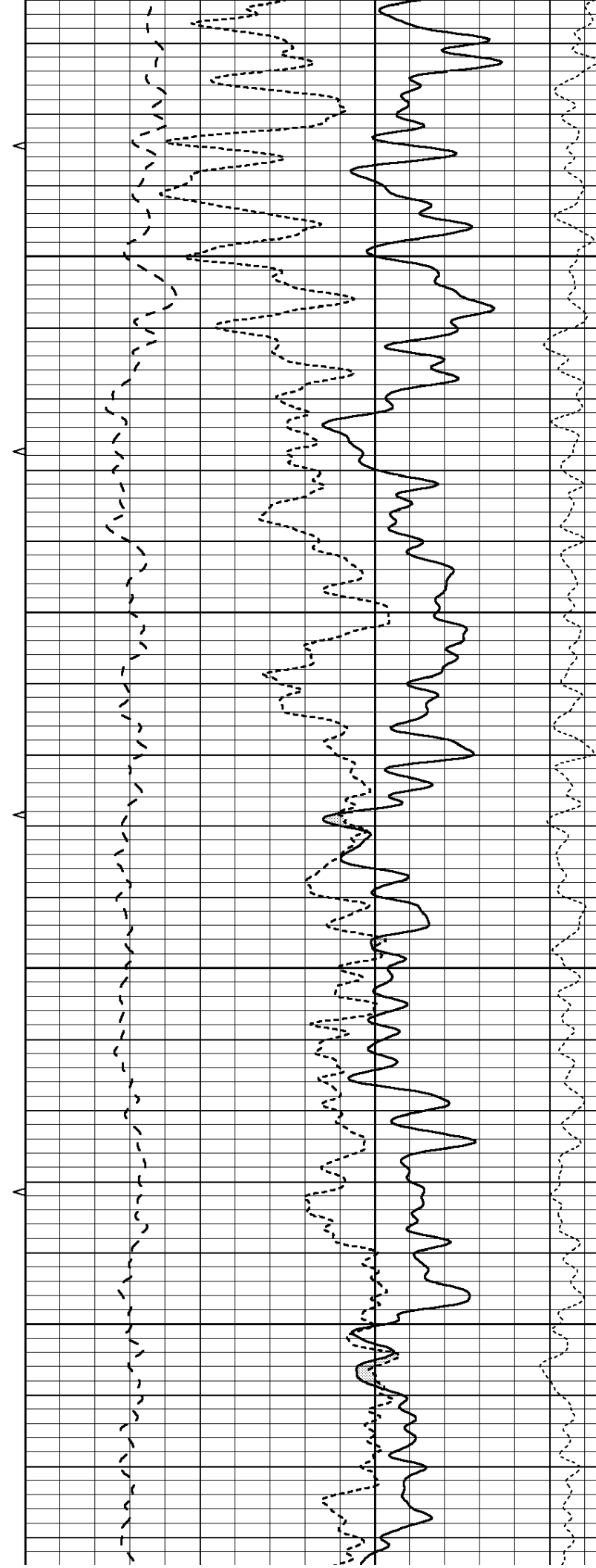
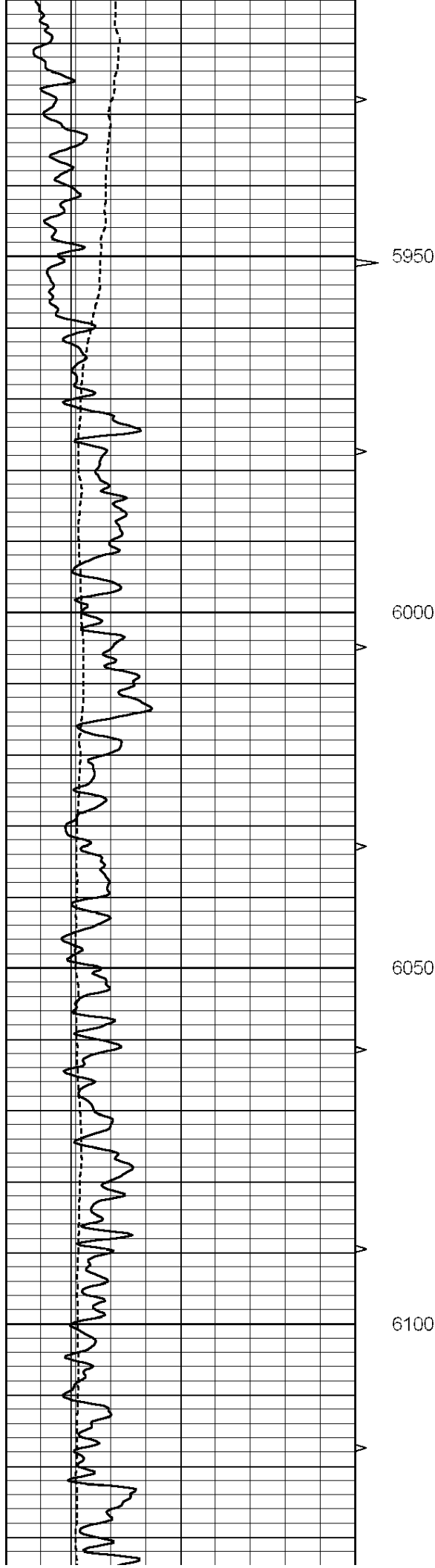


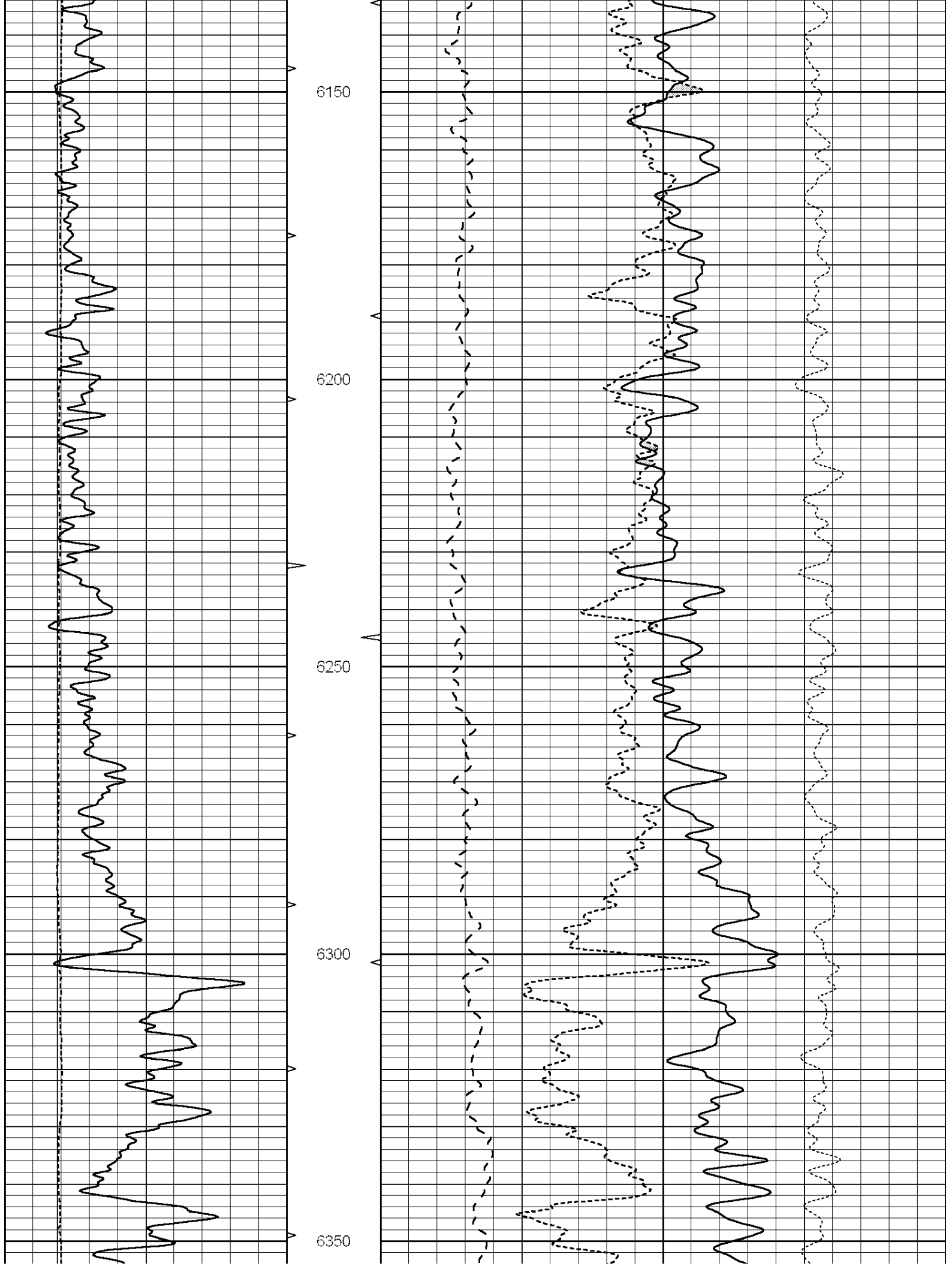


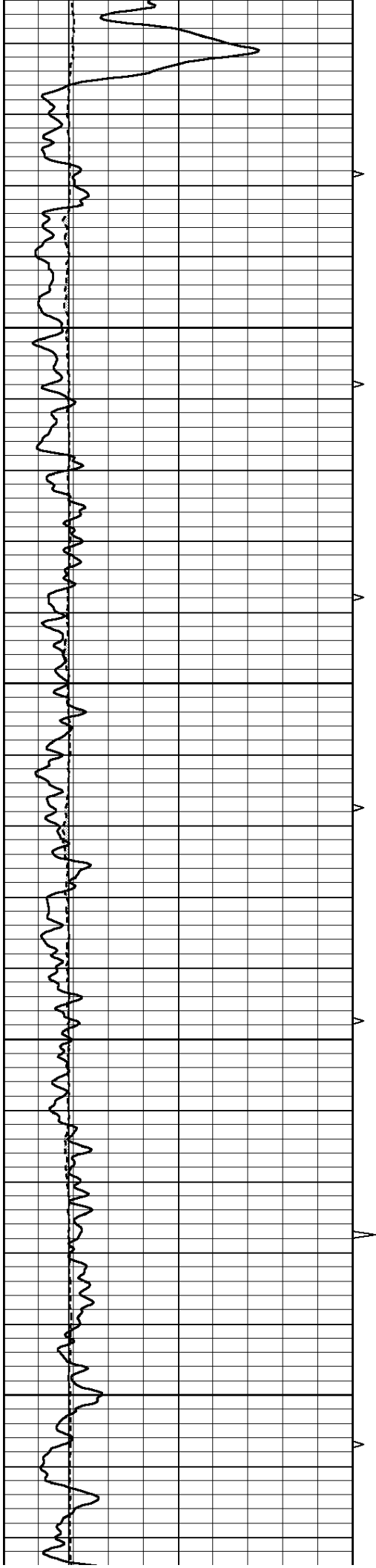










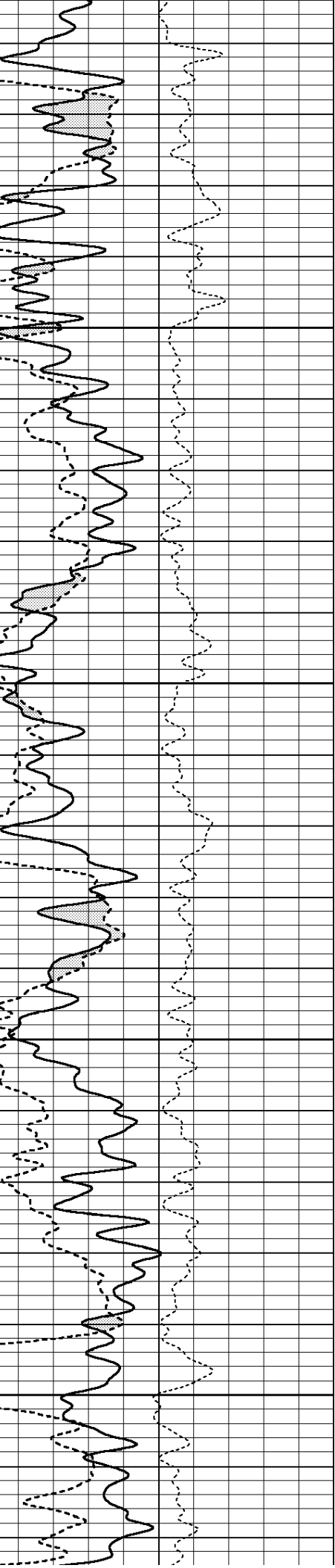
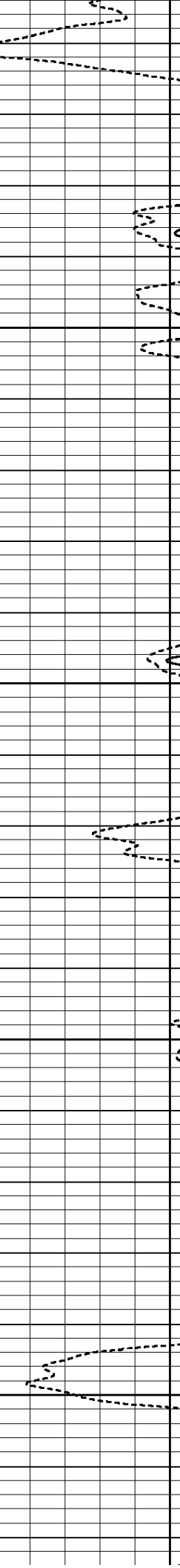
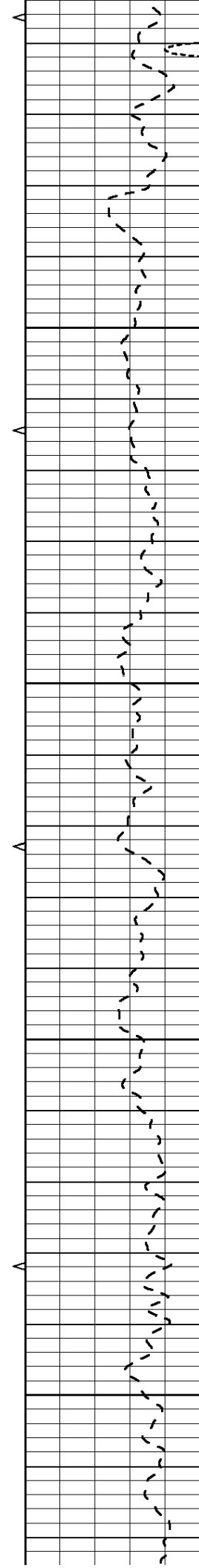


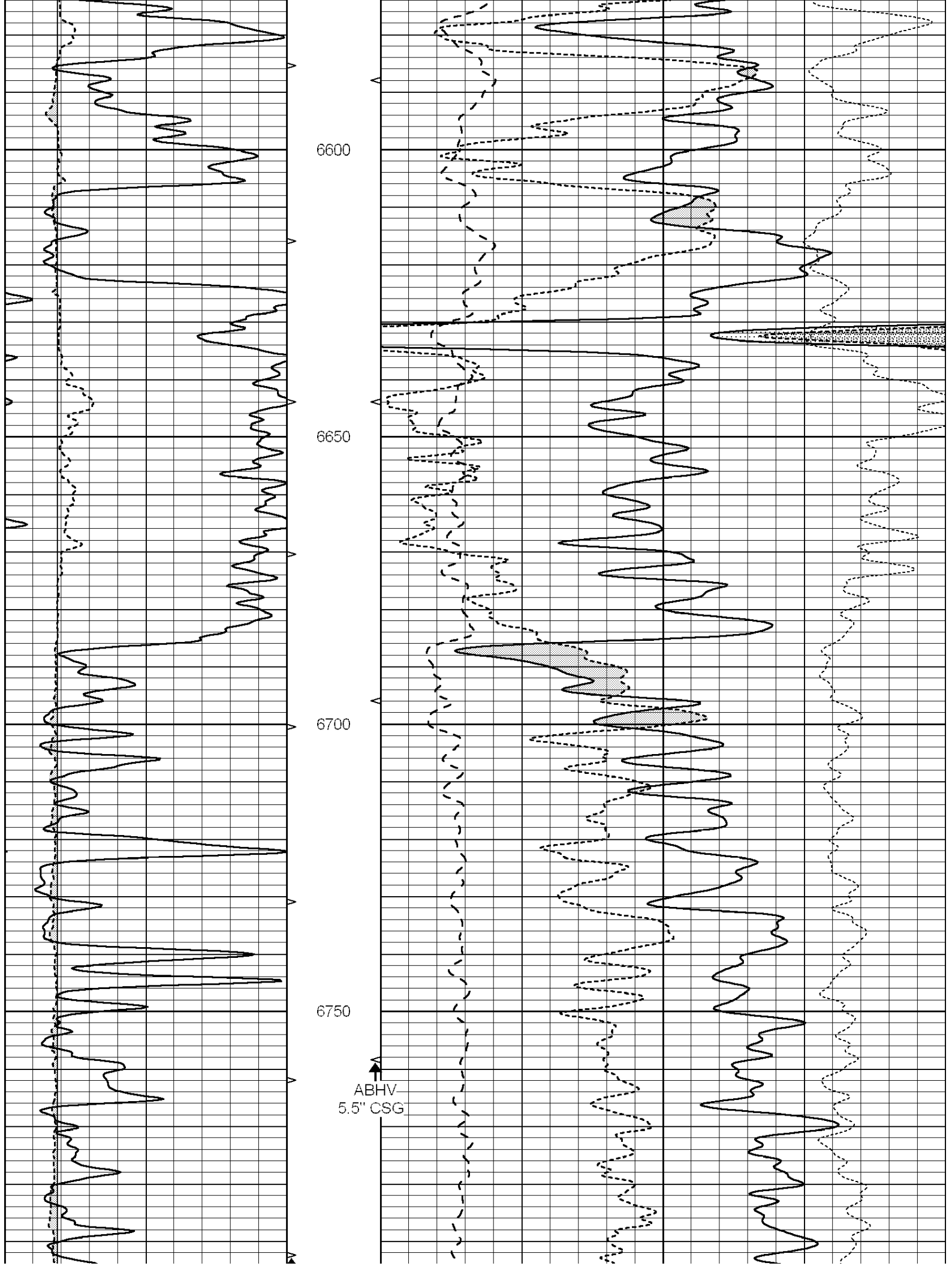
6400

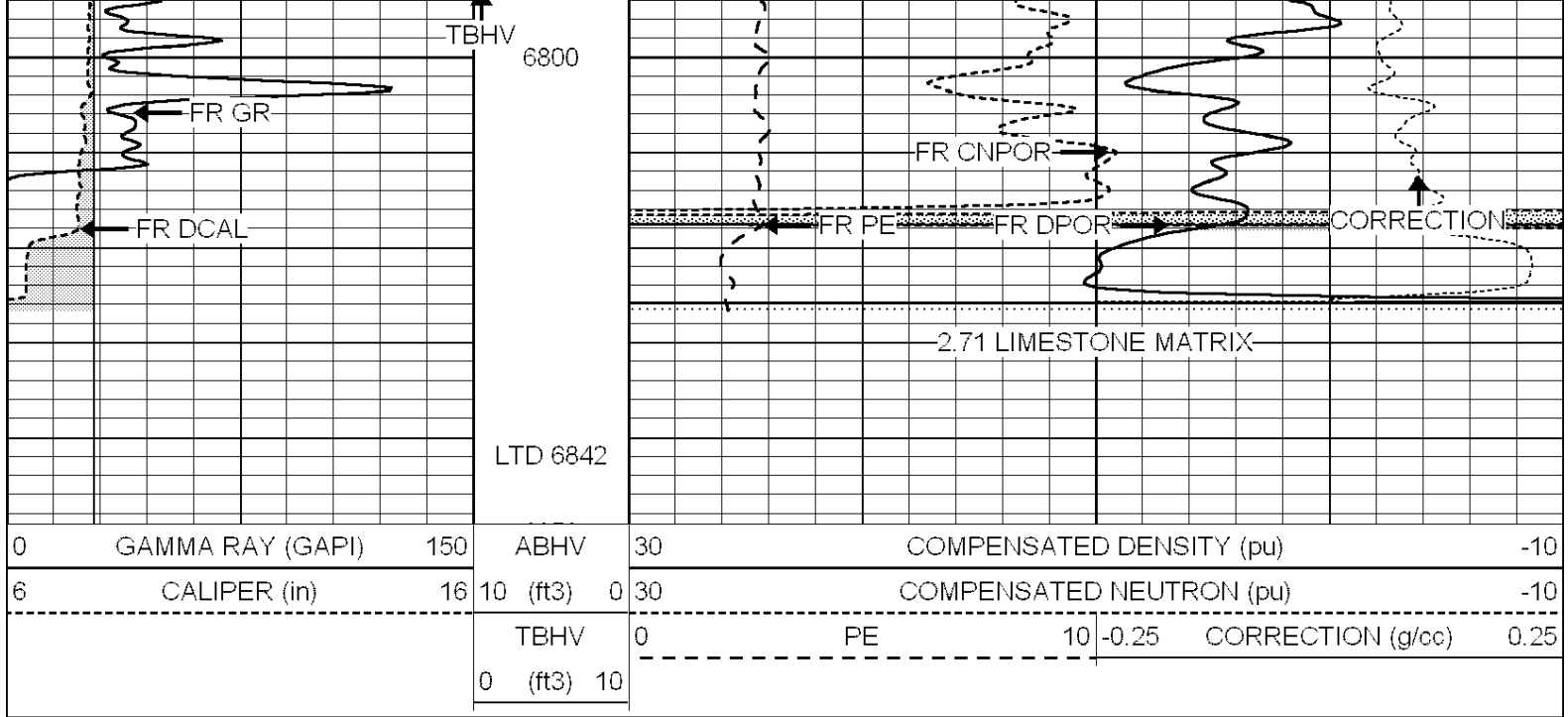
6450

6500

6550





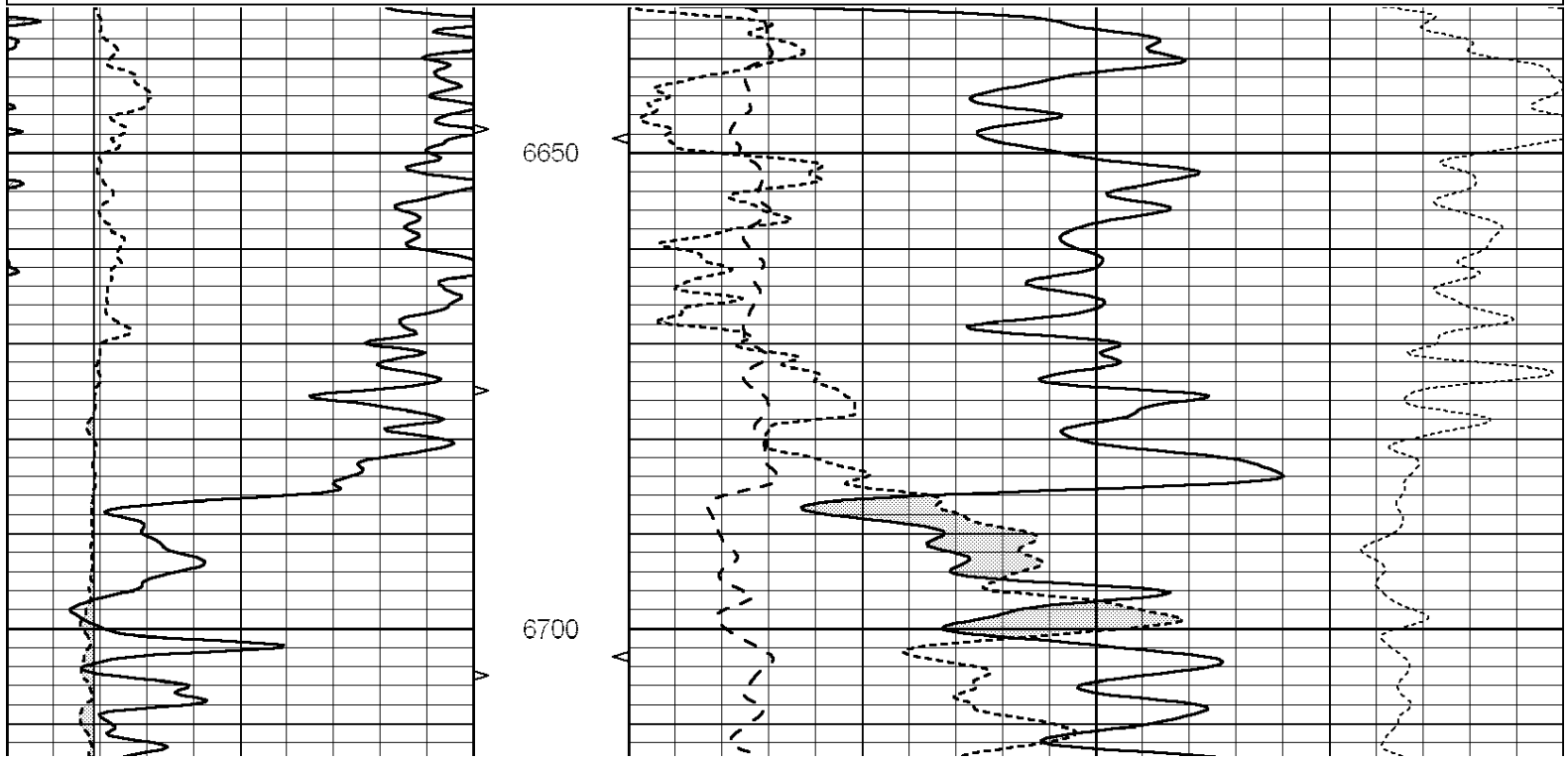


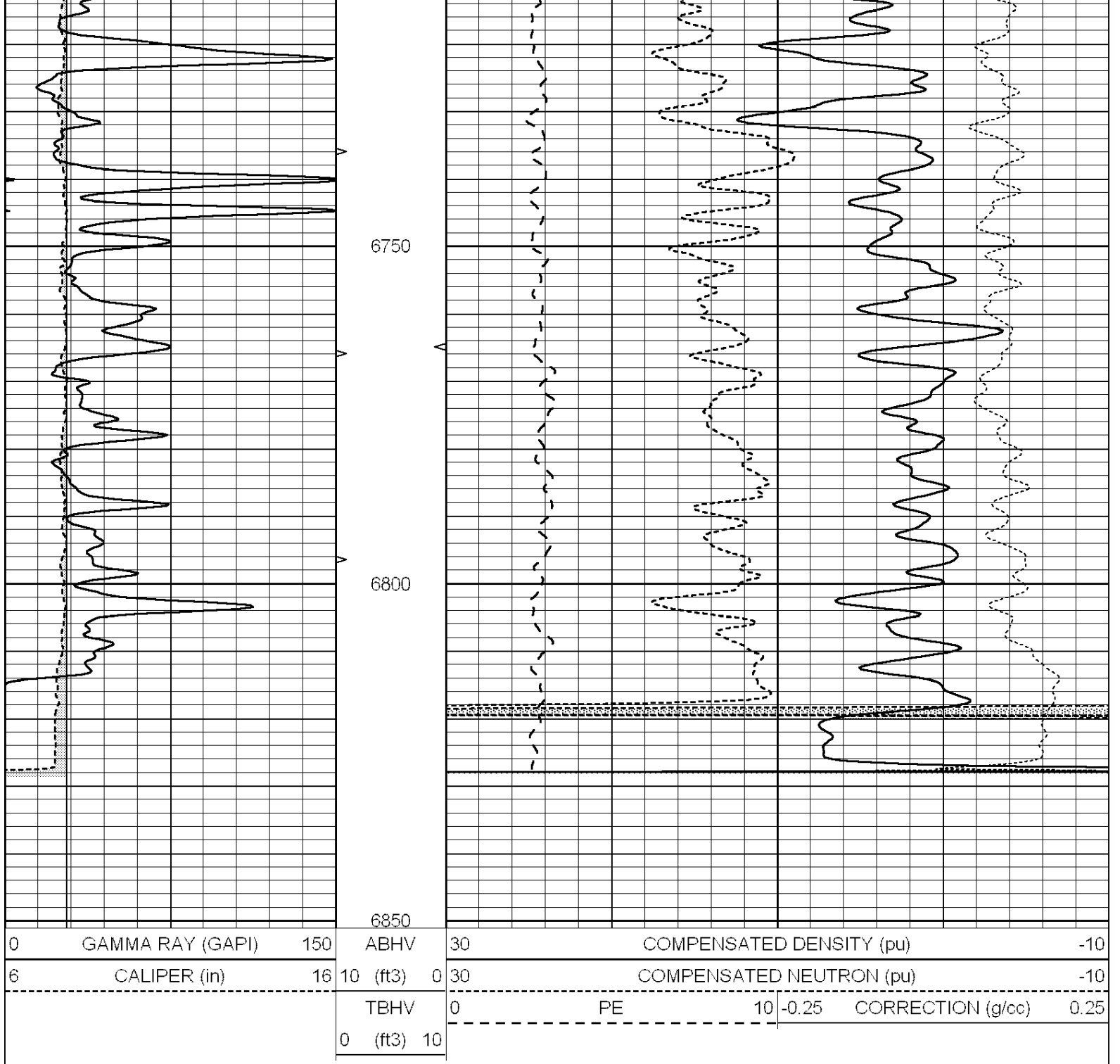
SUPERIOR  
Hays,  
Kansas

# REPEAT SECTION

Database File: 006690pe.db  
 Dataset Pathname: pass2.1  
 Presentation Format: \_ldt\_neu  
 Dataset Creation: Sun Feb 13 12:43:15 2011 by Calc Open-Cased 090629  
 Charted by: Depth in Feet scaled 1:240

|   |                  |     |          |    |                          |                          |       |                   |      |
|---|------------------|-----|----------|----|--------------------------|--------------------------|-------|-------------------|------|
| 0 | GAMMA RAY (GAPI) | 150 | ABHV     | 30 | COMPENSATED DENSITY (pu) | -10                      |       |                   |      |
| 6 | CALIPER (in)     | 16  | 10 (ft3) | 0  | 30                       | COMPENSATED NEUTRON (pu) | -10   |                   |      |
|   |                  |     | TBHV     | 0  | PE                       | 10                       | -0.25 | CORRECTION (g/cc) | 0.25 |
|   |                  |     | 0 (ft3)  | 10 |                          |                          |       |                   |      |





Calibration Report

Database File: 006690pe.db  
 Dataset Pathname: pass3.1  
 Dataset Creation: Sun Feb 13 12:57:18 2011 by Calc Open-Cased 090629

Dual Induction Calibration Report

Serial-Model: PROBE7-DILG  
 Surface Cal Performed: Wed Jul 30 06:14:24 2008  
 Downhole Cal Performed: Mon Jul 28 12:02:56 2008  
 After Survey Verification Performed: Mon Jul 28 12:02:56 2008

Surface Calibration

| Loop: | Readings |       | References |         | Results |       |
|-------|----------|-------|------------|---------|---------|-------|
|       | Air      | Loop  | Air        | Loop    | m       | b     |
| Pass  | 0.014    | 0.000 | 0.000      | 100.000 | 0.01000 | 0.750 |

|           |        |       |   |       |         |        |         |         |
|-----------|--------|-------|---|-------|---------|--------|---------|---------|
| Deep      | -0.014 | 0.629 | V | 0.000 | 400.000 | mmho/m | 621.923 | 8.759   |
| Medium    | 0.039  | 0.728 | V | 0.000 | 464.000 | mmho/m | 673.322 | -26.058 |
| Internal: | Zero   | Cal   |   | Zero  | Cal     |        | m       | b       |
| Deep      | 0.011  | 0.610 | V | 0.000 | 400.000 | mmho/m | 667.135 | -7.256  |
| Medium    | 0.005  | 0.712 | V | 0.000 | 464.000 | mmho/m | 655.677 | -3.102  |

| Downhole Calibration |          |        |        |            |          |        |         |       |
|----------------------|----------|--------|--------|------------|----------|--------|---------|-------|
|                      | Readings |        |        | References |          |        | Results |       |
|                      | Zero     | Cal    |        | Zero       | Cal      |        | m'      | b'    |
| Deep                 | 0.000    | 0.000  | mmho/m | 14.508     | 388.384  | mmho/m | 1.000   | 0.000 |
| Medium               | 0.000    | 0.000  | mmho/m | 166.367    | 504.400  | mmho/m | 1.000   | 0.000 |
| LL3                  |          | 7.500  | V      |            | 1400.000 | Ohm-m  |         |       |
|                      |          | 0.000  | V      |            | 20.000   | Ohm-m  |         |       |
|                      |          | -7.200 | V      |            | 4000.000 | mmho-m |         |       |

| After Survey Verification |          |       |        |         |       |        |         |       |
|---------------------------|----------|-------|--------|---------|-------|--------|---------|-------|
|                           | Readings |       |        | Targets |       |        | Results |       |
|                           | Zero     | Cal   |        | Zero    | Cal   |        | m'      | b'    |
| Deep                      | 0.000    | 0.000 | mmho/m | 0.000   | 0.000 | mmho/m | 0.000   | 0.000 |
| Medium                    | 0.000    | 0.000 | mmho/m | 0.000   | 0.000 | mmho/m | 0.000   | 0.000 |
| LL3                       |          | 1.000 | Ohm-m  |         | 1.000 | Ohm-m  |         |       |
|                           |          | 0.000 | Ohm-m  |         | 0.000 | Ohm-m  |         |       |
|                           |          | 1.000 | mmho-m |         | 1.000 | mmho-m |         |       |

Litho Density Calibration Report  
Serial: 002      Model: PRB  
Performed Mon Oct 29 15:40:49 2007

| Litho Density Calibration |            |  |             |         |                     |  |           |      |
|---------------------------|------------|--|-------------|---------|---------------------|--|-----------|------|
|                           | Background |  | Magnesium   |         | Aluminum            |  | Sandstone |      |
| Window 1                  | 1056.3     |  | 9118.0      |         | 2809.7              |  | 10378.4   | cps  |
| Window 2                  | 969.9      |  | 7671.9      |         | 2431.6              |  | 8565.8    | cps  |
| Window 3                  | 683.8      |  | 2939.8      |         | 1161.0              |  | 3161.8    | cps  |
| Window 4                  | 231.4      |  | 231.6       |         | 226.7               |  | 230.8     | cps  |
| Long Space                | 0.0        |  | 6702.0      |         | 1461.7              |  | 7595.9    | cps  |
| Short Space               | 1.2        |  | 1433.6      |         | 959.4               |  | 1568.6    | cps  |
| Rho                       |            |  | 1.7100      |         | 2.5900              |  | 1.3800    | g/cc |
| Pe                        |            |  |             |         | 2.5700              |  | 1.5500    |      |
| Rib Angle                 | : 45.2     |  | Rib Slope   | : 1.008 | Density/Spine Ratio |  | : 0.559   |      |
| Spine Angle               | : 75.2     |  | Spine Slope | : 3.791 | Spine Intercept     |  | : -18.7   |      |

| Caliper   |     |             |  |
|-----------|-----|-------------|--|
| Readings  |     | Reference   |  |
| Low Ref   | 2.8 | 8.0         |  |
| High Ref  | 5.0 | 14.0        |  |
| Gain: 2.7 |     | Offset: 0.0 |  |

Compensated Neutron Calibration Report

|                |    |
|----------------|----|
| Serial Number: | 5I |
| Tool Model:    | G  |

| CALIBRATION |          |     |        |     |               |  |
|-------------|----------|-----|--------|-----|---------------|--|
| Detector    | Readings |     | Target |     | Normalization |  |
| Short Space | 1.00     | cps | 1.00   | cps | 1.0000        |  |
| Long Space  | 1.00     | cps | 1.00   | cps | 1.0000        |  |

Gamma Ray Calibration Report

Serial Number: GR6  
Tool Model: OPEN  
Performed: Wed Feb 09 19:28:22 2011

Calibrator Value: 150.0 GAPI

Background Reading: 0.0 cps  
Calibrator Reading: 276.0 cps

Sensitivity: 1.2435 GAPI/cps