



SUPERIOR
Hays,
Kansas

MICRO
LOG

Company CORAL COAST PETROLEUM, LLC
Well #1 STEPHENS
Field MORRISON NORTHEAST
County CLARK
State KANSAS

Company CORAL COAST PETROLEUM, LLC.
Well #1 STEPHENS
Field MORRISON NORTHEAST
County CLARK State KANSAS

Location: API # : 15-025-10027-0000
1980' FSL & 1320' FEL
N/2 - SE
SEC 15 TWP 32S RGE 21W
Permanent Datum GROUND LEVEL Elevation 2050
Log Measured From KELLY BUSHING 10' A.G.L.
Drilling Measured From KELLY BUSHING
Other Services
CDL/CNL/PE
DIL/SON
Elevation
K.B. 2060
D.F. 2058
G.L. 2050

Date	2/13/11
Run Number	TWO
Depth Driller	6840
Depth Logger	6842
Bottom Logged Interval	6824
Top Log Interval	4200
Casing Driller	8 5/8 @ 592
Casing Logger	591
Bit Size	7 7/8
Type Fluid in Hole	CHEMICAL MUD
Density / Viscosity	9.1/47
pH / Fluid Loss	10.0/12.4
Source of Sample	FLOWLINE
Rim @ Meas. Temp	.52 @ 62F
Rmf @ Meas. Temp	.39 @ 62F
Rmc @ Meas. Temp	.62 @ 62F
Source of Rmf / Rmc	MEASURED
Rim @ BHT	.22 @ 141F
Time Circulation Stopped	3 HOURS
Time Logger on Bottom	
Maximum Recorded Temperature	141F
Equipment Number	680
Location	HAYS, KS.
Recorded By	JASON CAPPELLUCCI
Witnessed By	TIM PRIEST

<<< Fold Here >>>

All interpretations are opinions based on inferences from electrical or other measurements and we cannot and do not guarantee the accuracy or correctness of any interpretation, and we shall not, except in the case of gross or willful negligence on our part, be liable or responsible for any loss, costs, damages, or expenses incurred or sustained by anyone resulting from any interpretation made by any of our officers, agents or employees. These interpretations are also subject to our general terms and conditions set out in our current Price Schedule.

Comments

THANK YOU FOR USING SUPERIOR WELL SERVICE (785) 628-6395
DIRECTIONS
PROTECTION, KS. - 6 E. - 4 MILES N. INTO

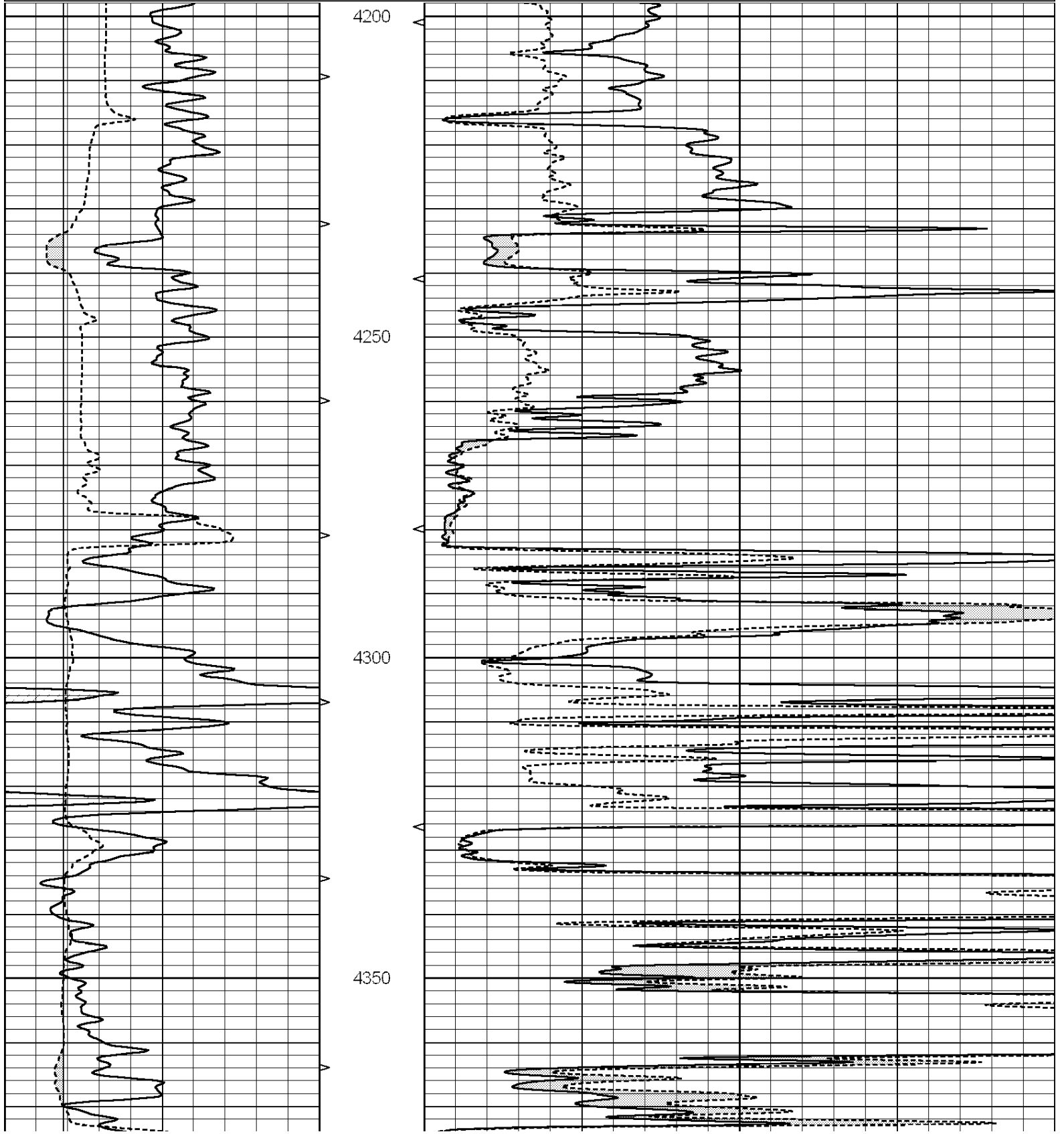


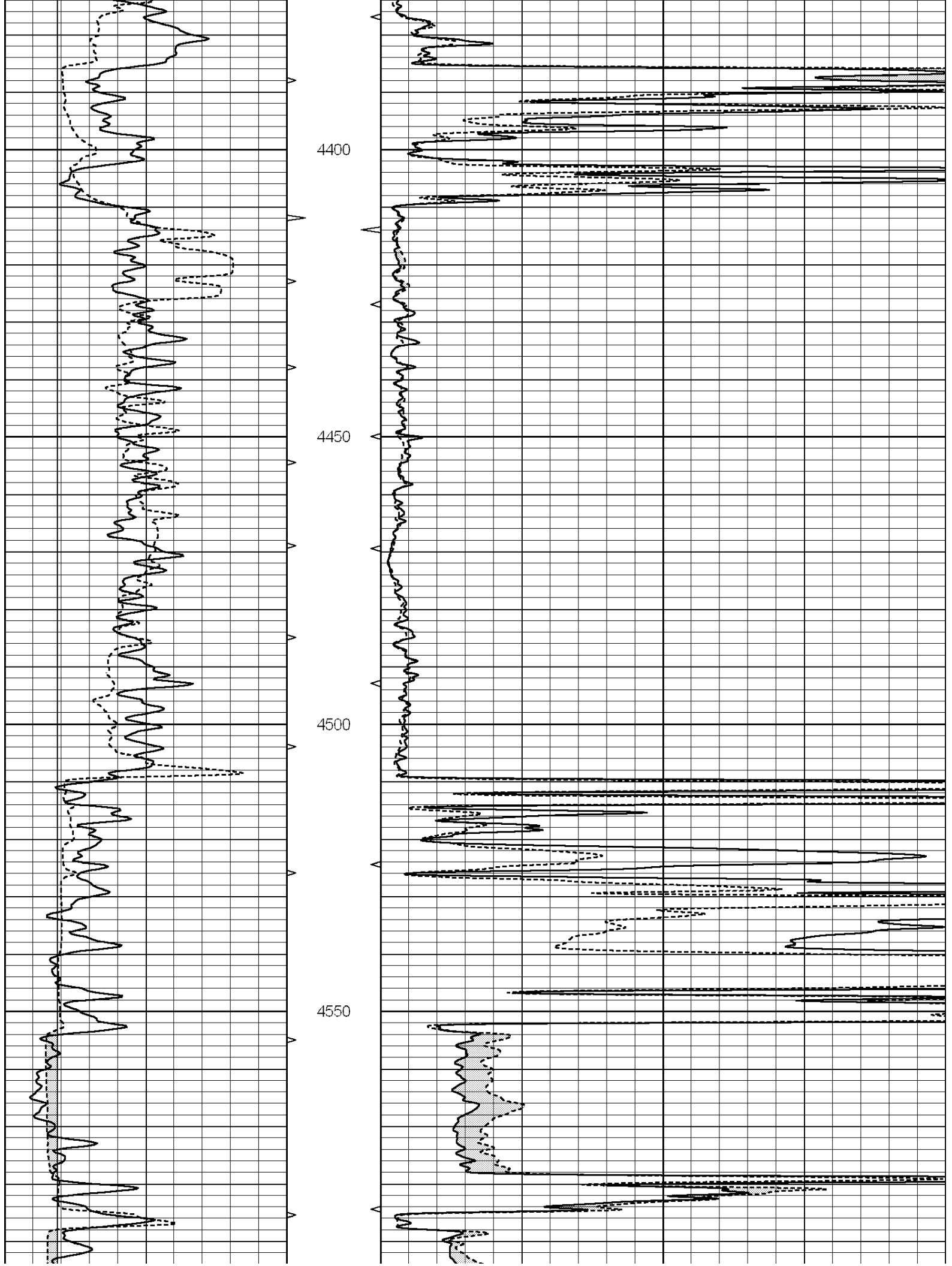
SUPERIOR
Hays,
Kansas

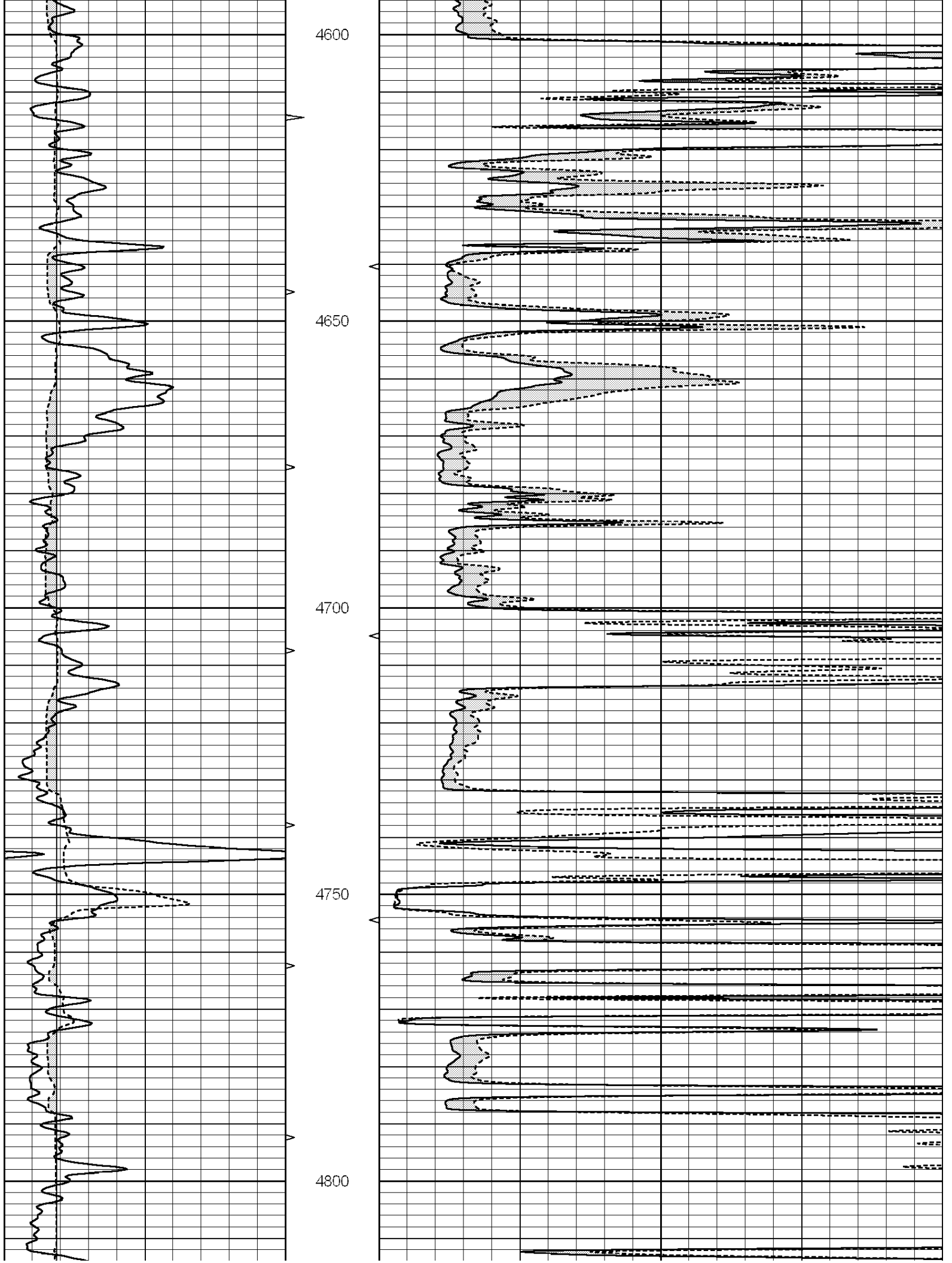
MAIN SECTION

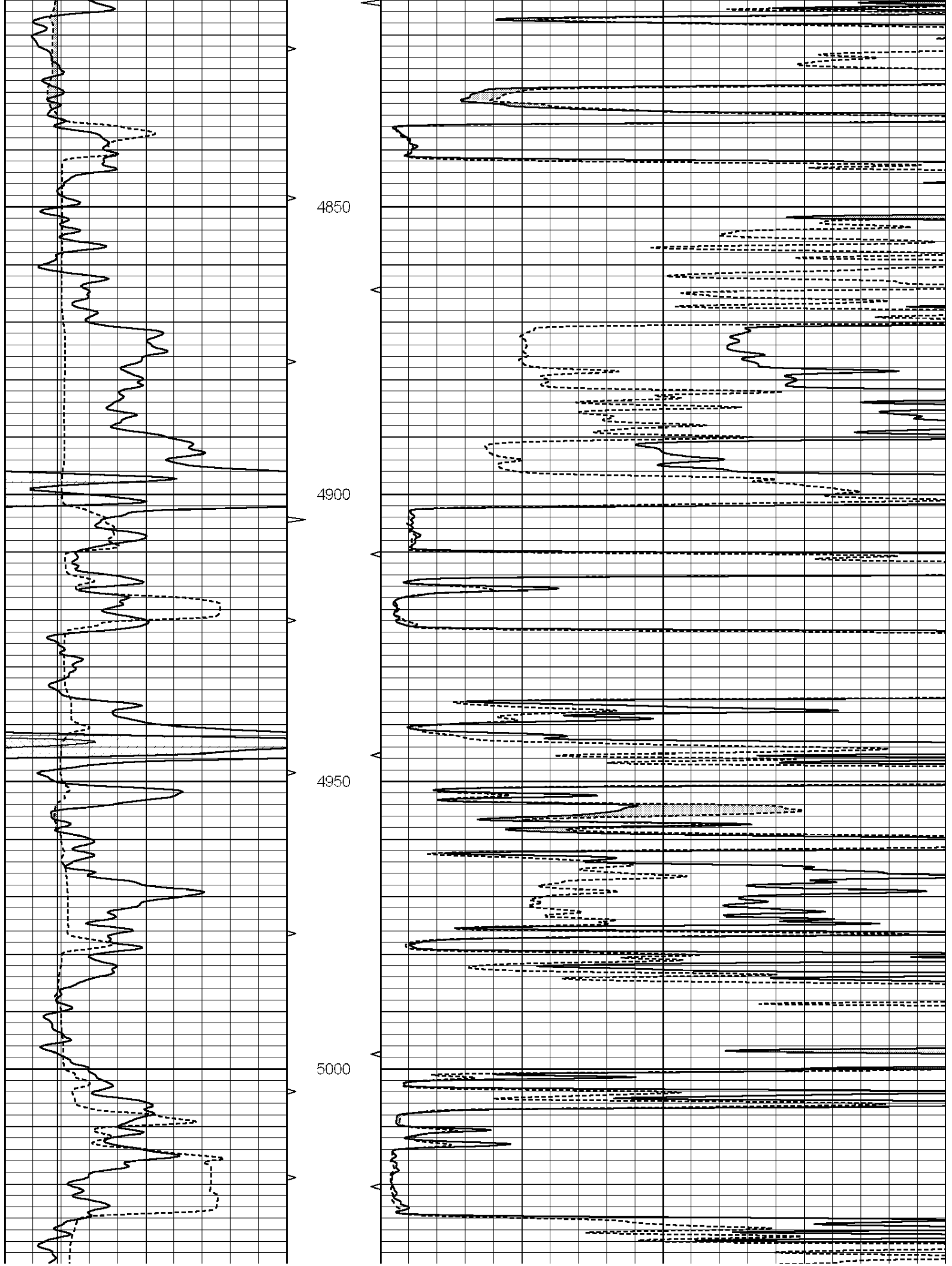
Database File: 006690pe.db
 Dataset Pathname: pass6.1
 Presentation Format: _micro
 Dataset Creation: Sun Feb 13 16:05:48 2011 by Calc Open-Cased 090629
 Charted by: Depth in Feet scaled 1:240

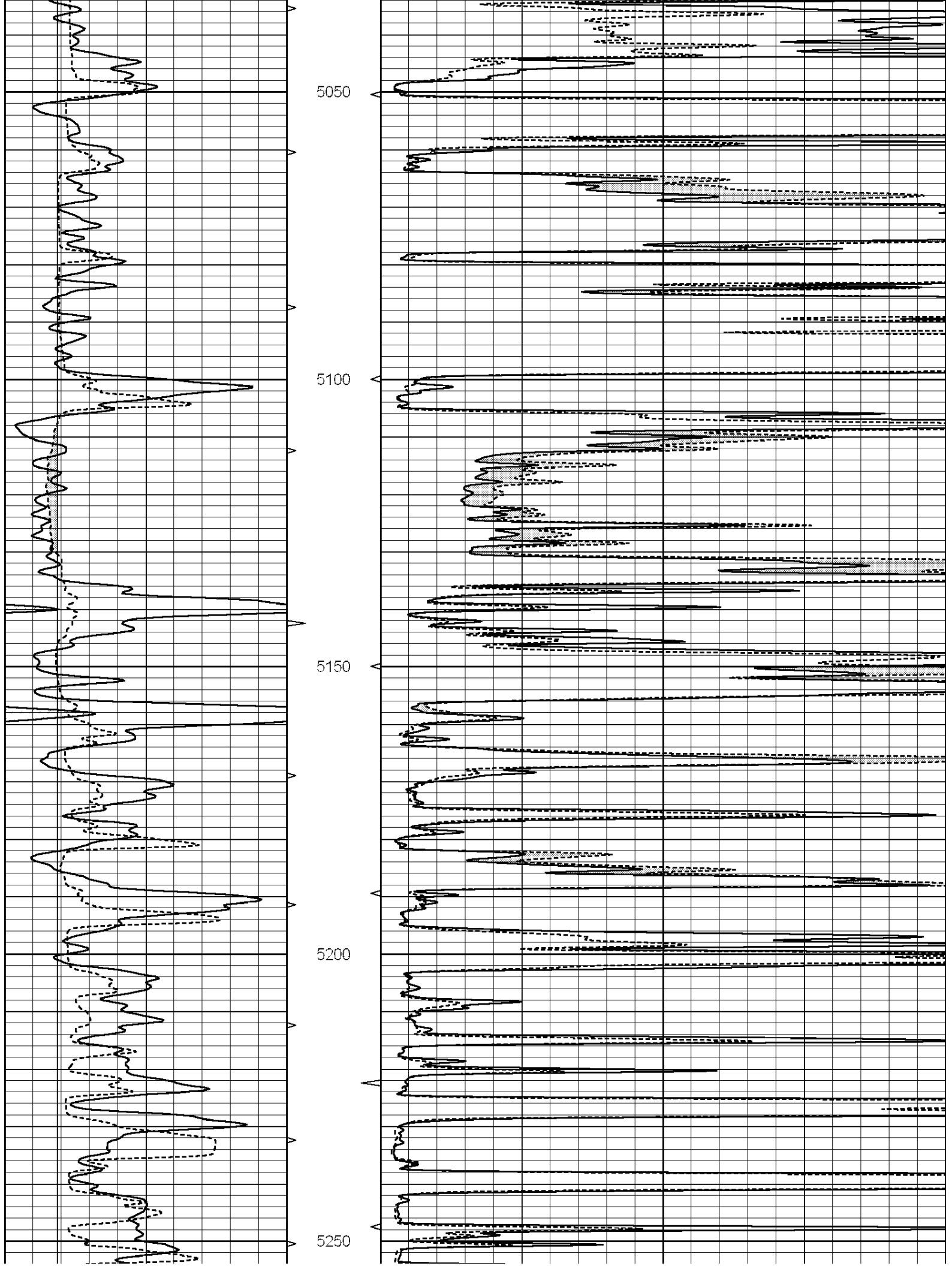
0	GAMMA RAY (GAPI)	150	ABHV	0	MEL1.5 (Ohm-m)	40
6	CALIPER (in)	16	10 (ft3)	0	MEL2.0 (Ohm-m)	40
			TBHV			
			0 (ft3)	10		

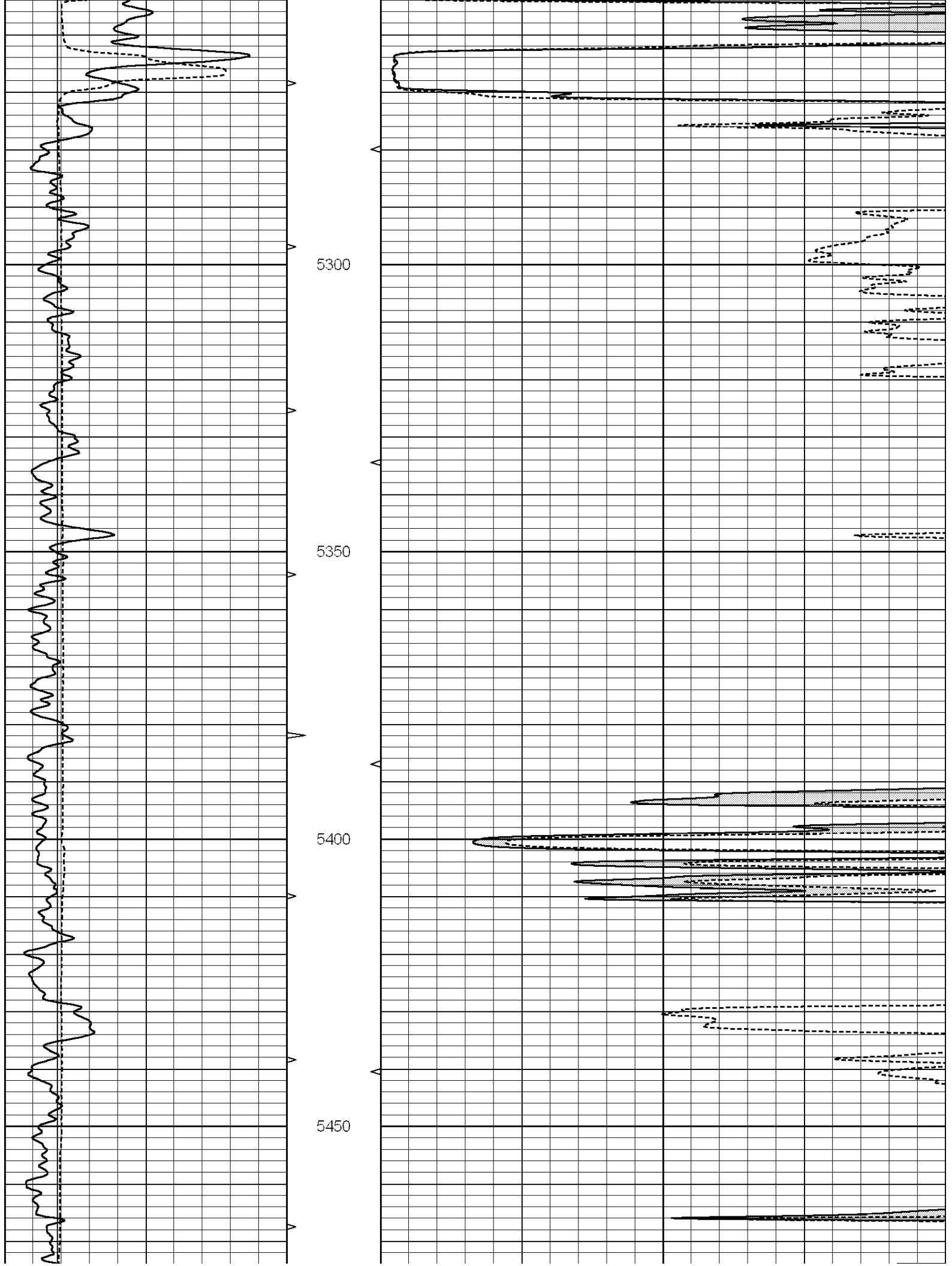


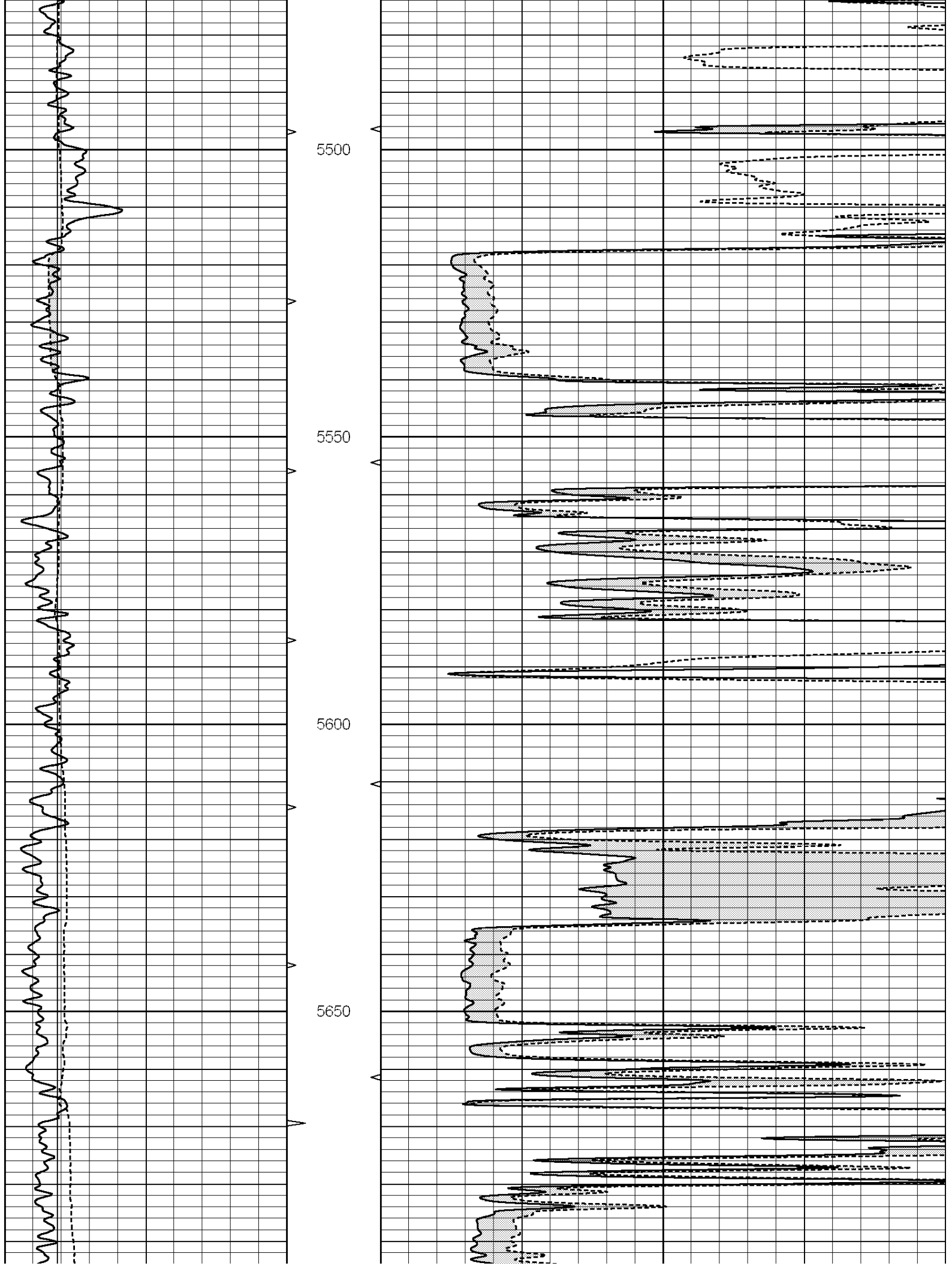


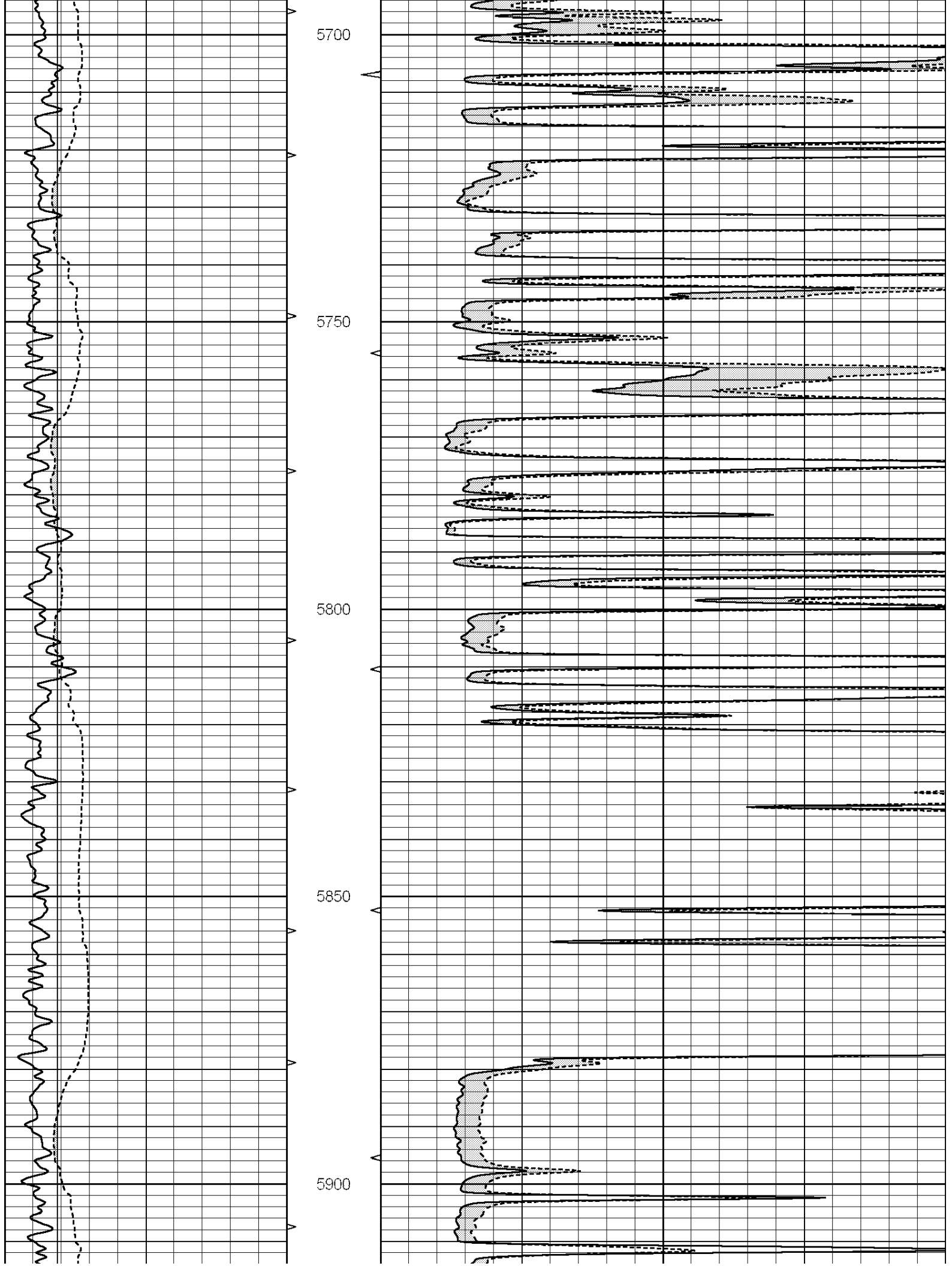


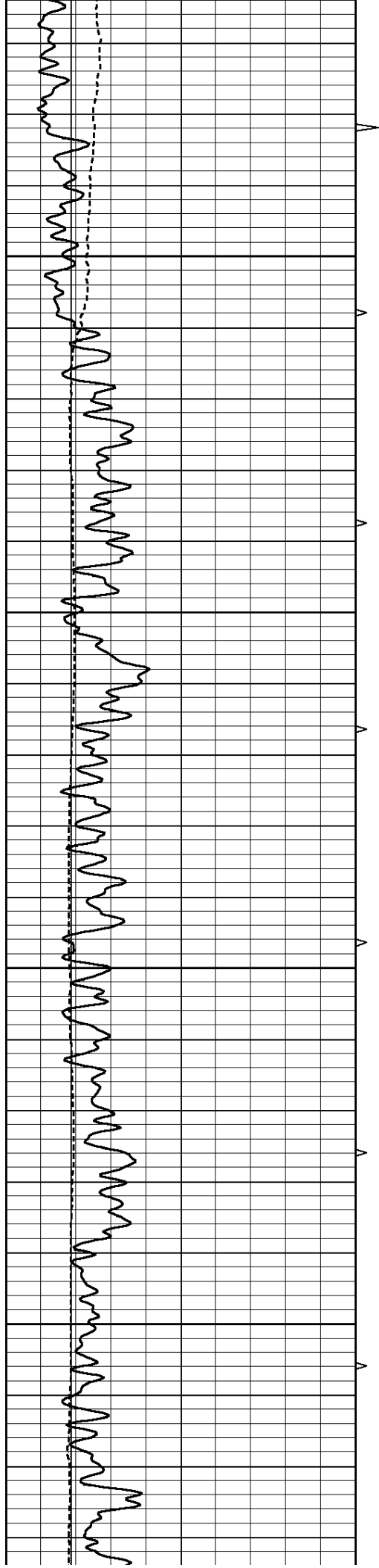










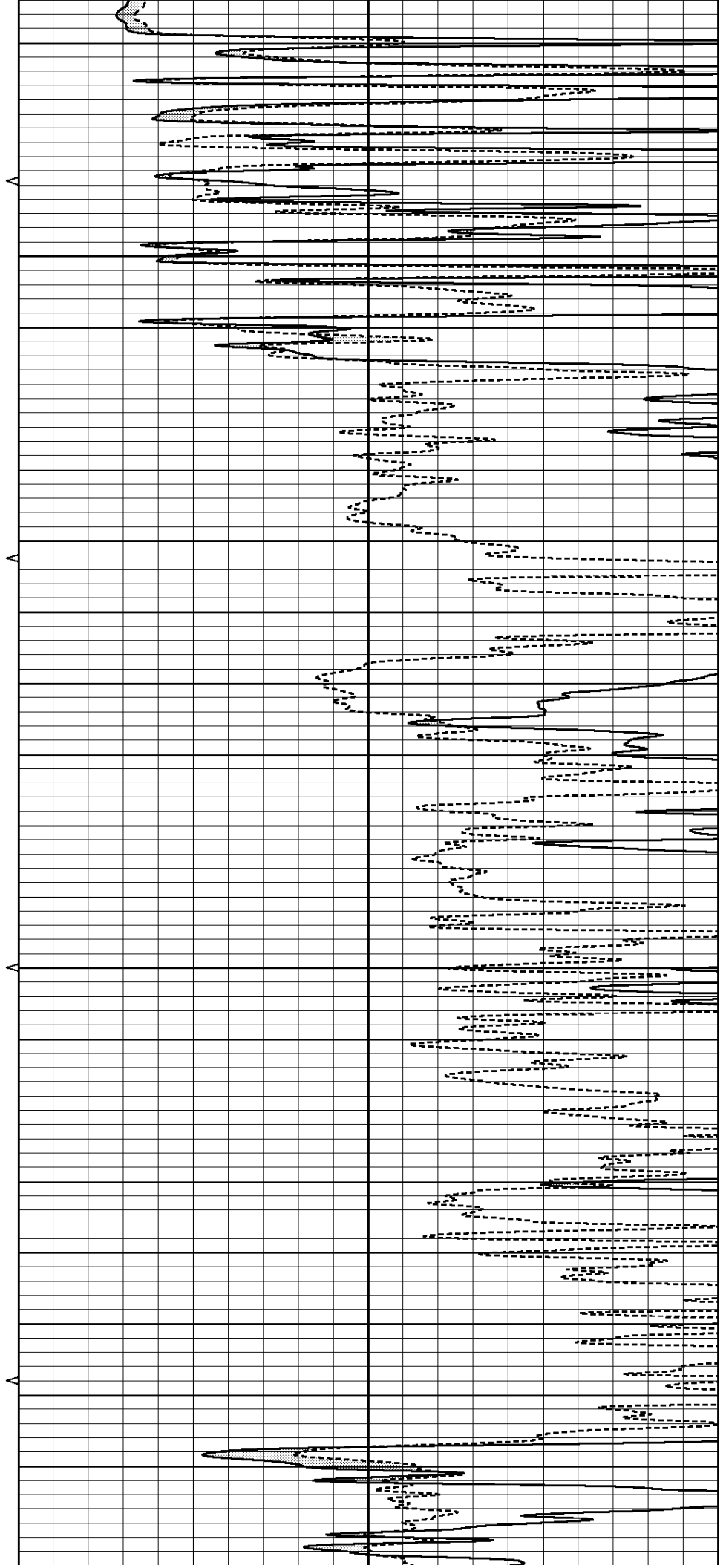


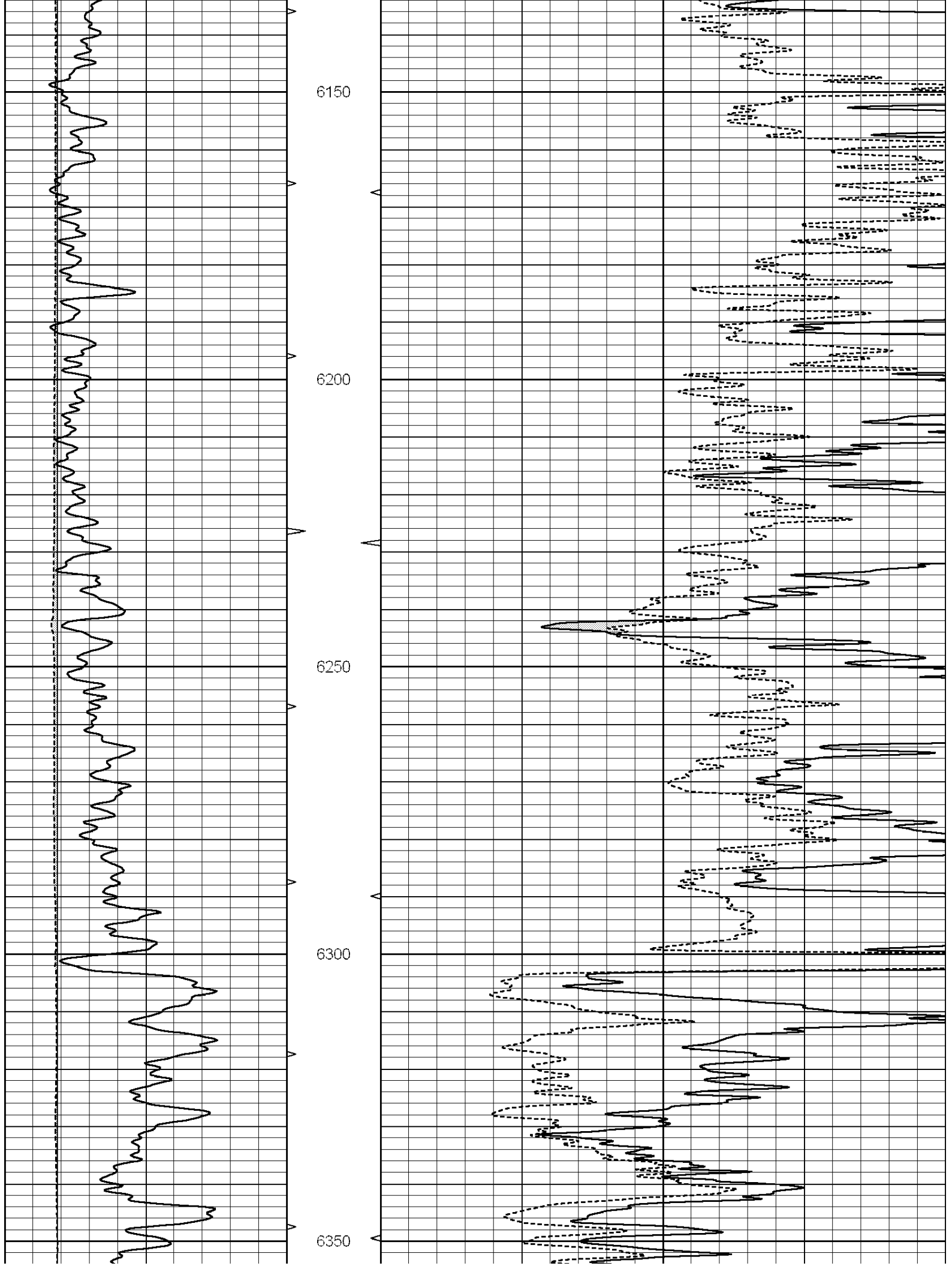
5950

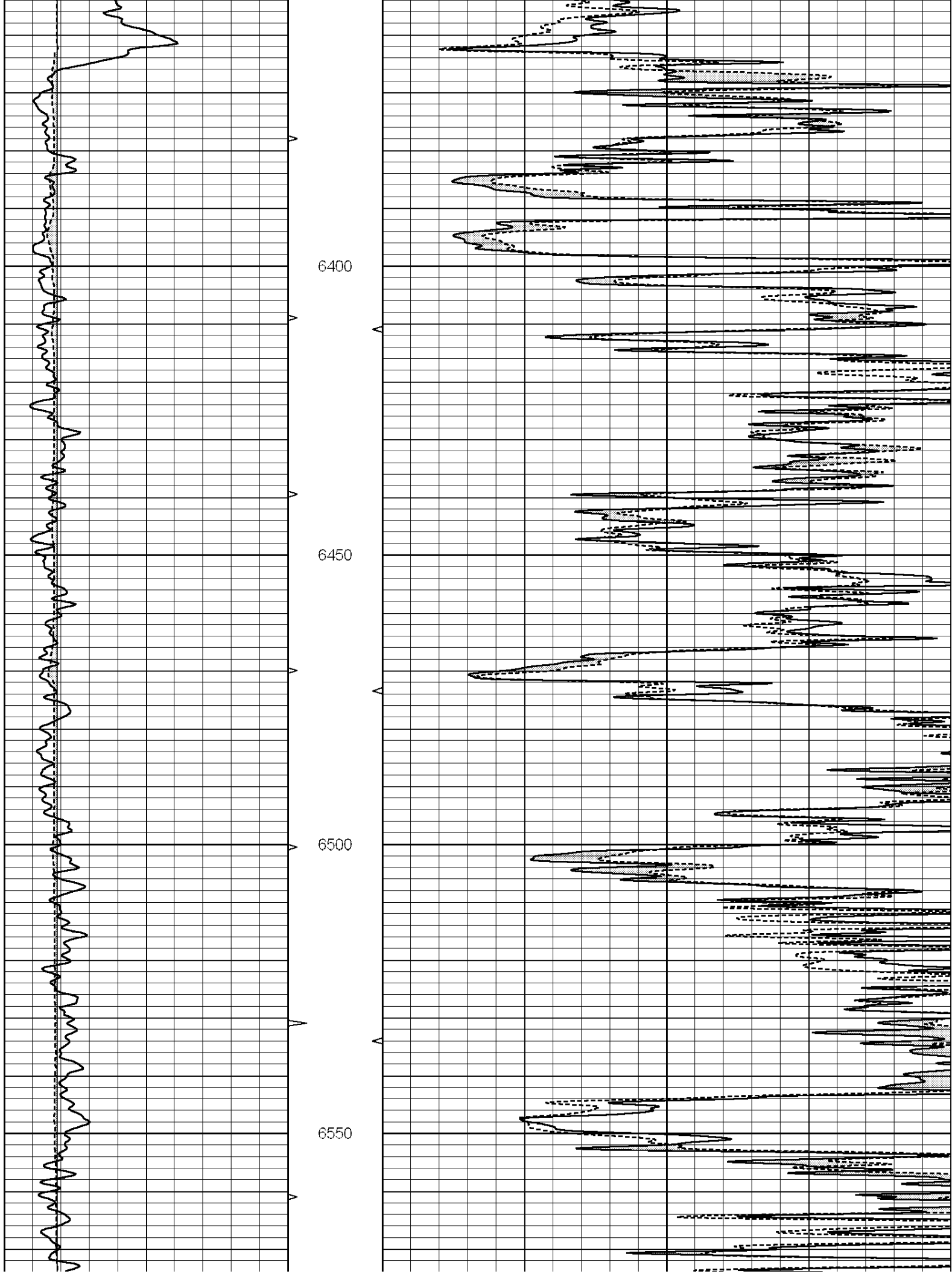
6000

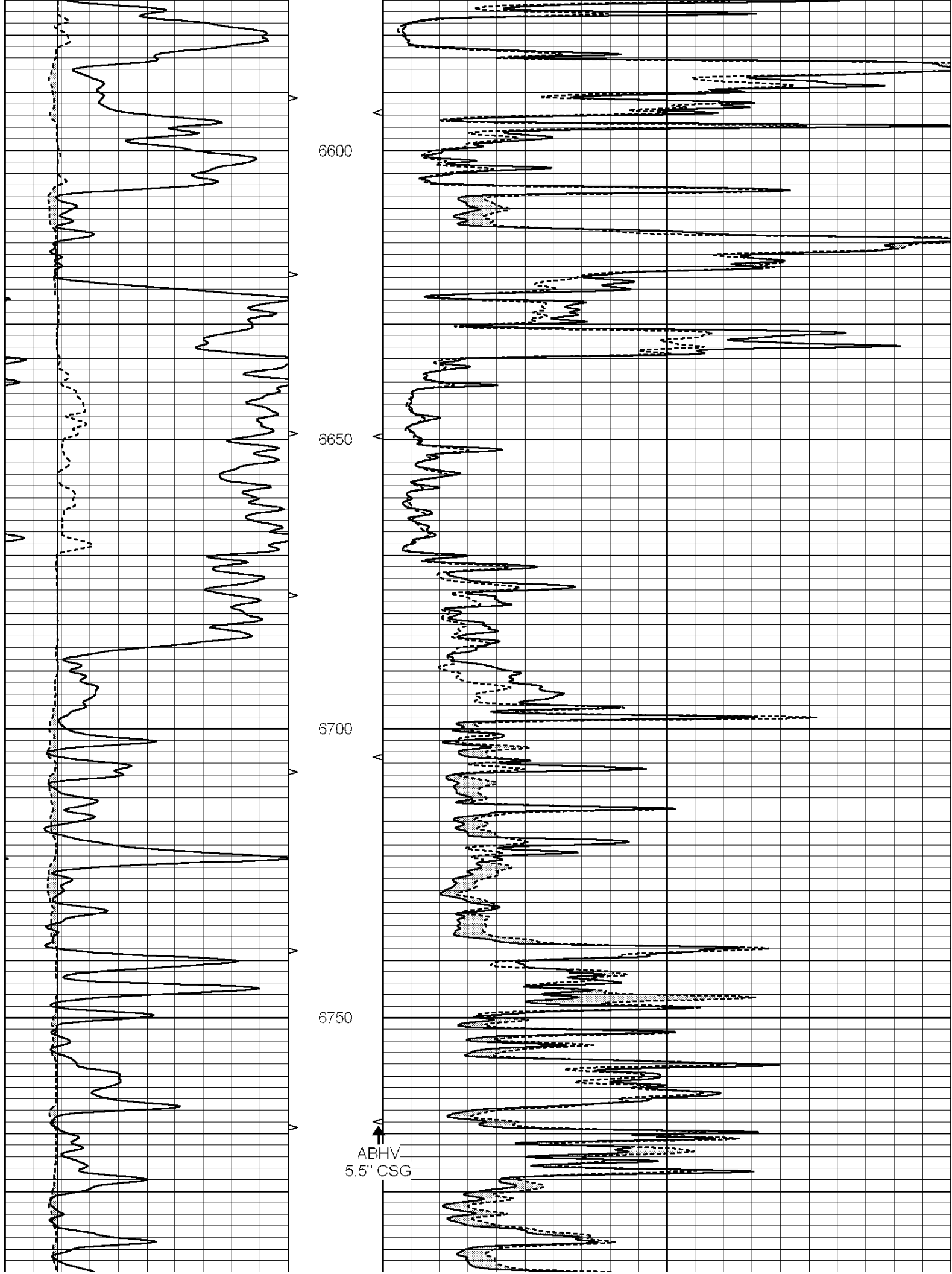
6050

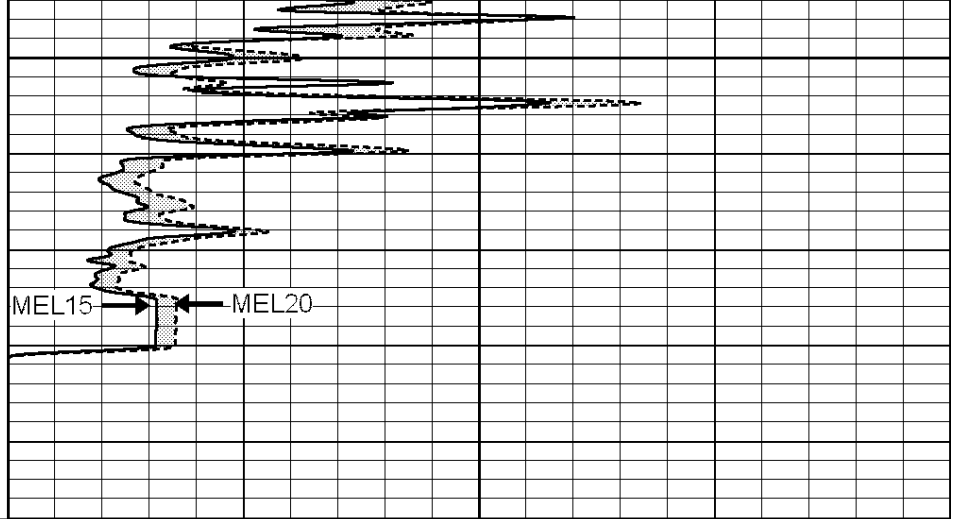
6100











0	GAMMA RAY (GAPI)	150	ABHV	0	MEL1.5 (Ohm-m)	40
6	CALIPER (in)	16	10 (ft3) 0	0	MEL2.0 (Ohm-m)	40
			TBHV			
			0 (ft3) 10			

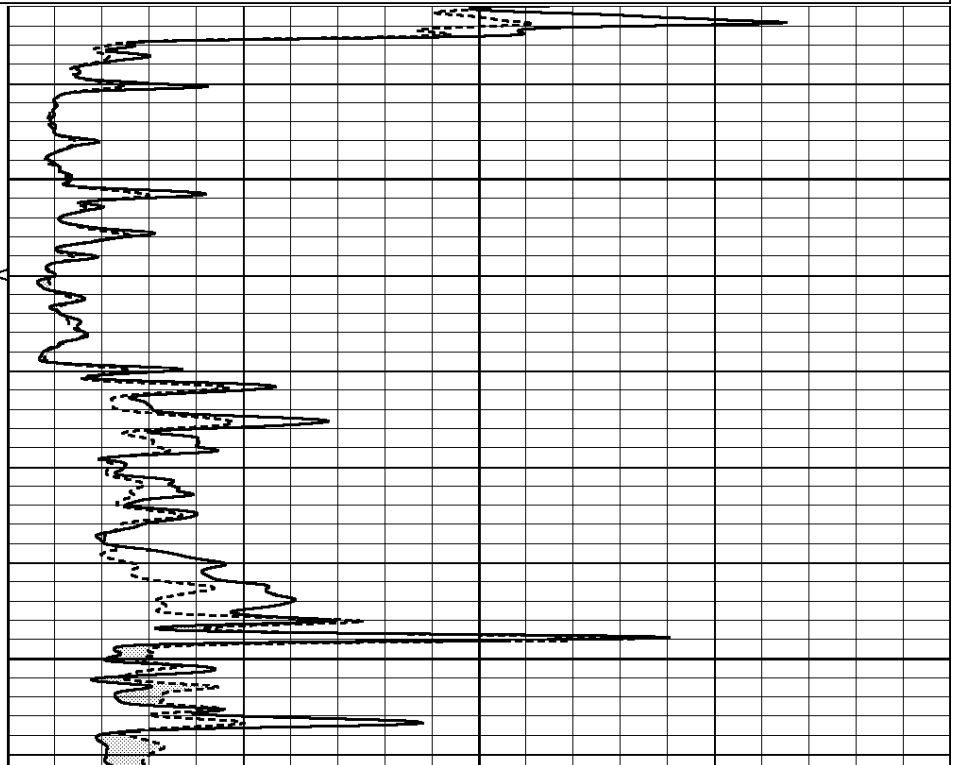
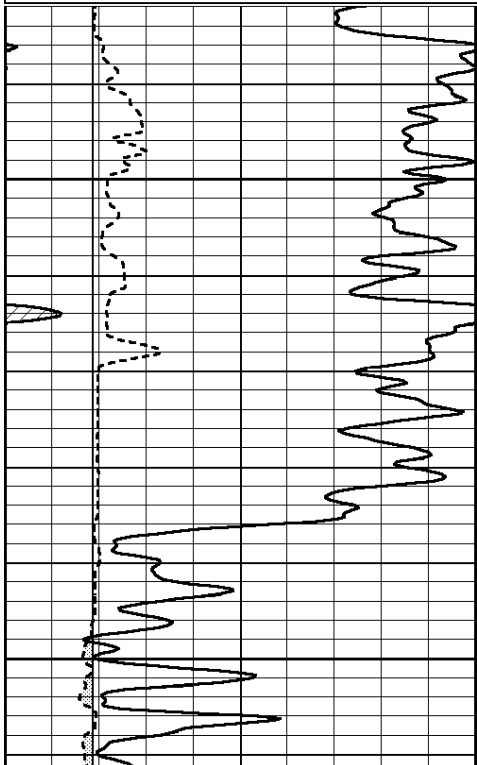


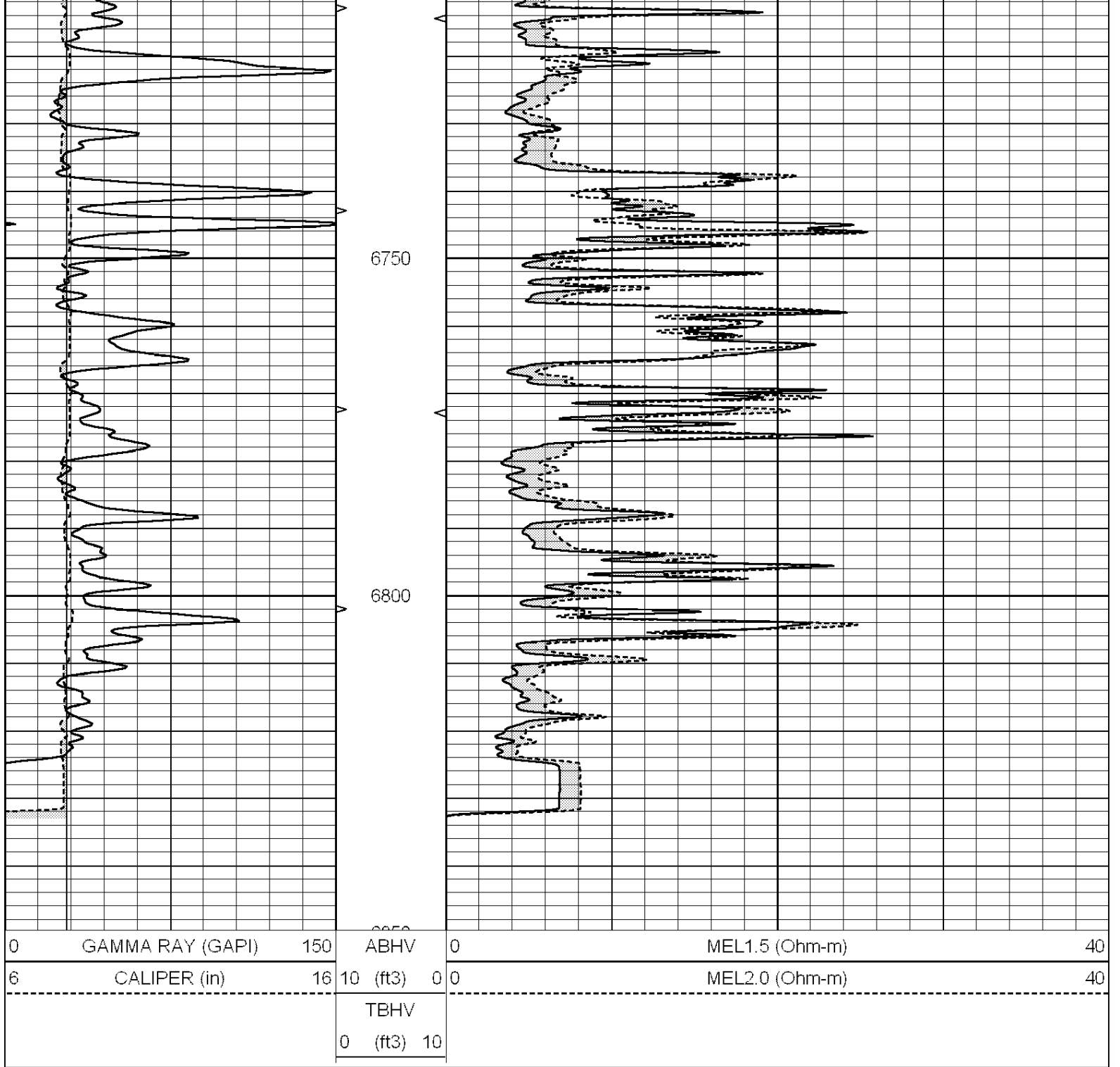
SUPERIOR
Hays,
Kansas

REPEAT SECTION

Database File: 006690pe.db
 Dataset Pathname: pass5.1
 Presentation Format: _micro
 Dataset Creation: Sun Feb 13 15:40:52 2011 by Calc Open-Cased 090629
 Charted by: Depth in Feet scaled 1:240

0	GAMMA RAY (GAPI)	150	ABHV	0	MEL1.5 (Ohm-m)	40
6	CALIPER (in)	16	10 (ft3) 0	0	MEL2.0 (Ohm-m)	40
			TBHV			
			0 (ft3) 10			





Calibration Report

Database File: 006690pe.db
 Dataset Pathname: pass5.1
 Dataset Creation: Sun Feb 13 15:40:52 2011 by Calc Open-Cased 090629

MICRO Calibration Report

Serial Number: MICRO6
 Tool Model: PROBE
 Performed: Wed Jan 19 06:40:00 2011

Caliper Calibration: Gain=5.211 Offset=1.560

	Low Cal	High Cal
References	8.000	14.000
Readings	1.178	2.330

1.5" Calibration:	Gain=40.000	Offset=0.000
References	Low Cal 0.000	High Cal 20.000
Readings	0.008	1.200

2" Calibration:	Gain=45.000	Offset=-0.200
References	Low Cal 0.000	High Cal 20.000
Readings	0.008	0.888

Gamma Ray Calibration Report

Serial Number:	GR6	
Tool Model:	OPEN	
Performed:	Wed Feb 09 19:28:22 2011	
Calibrator Value:	150.0	GAPI
Background Reading:	0.0	cps
Calibrator Reading:	276.0	cps
Sensitivity:	1.2435	GAPI/cps