



**SUPERIOR
Hays,
Kansas**

**MICRO
LOG**

Company NORSTAR PETROLEUM, INC.
Well WJLH KOONS #1-36
Field
County THOMAS State KANSAS

Location: API #: 15-193-20824
237' FSL & 1005' FEL
SEC 36 TWP 10S RGE 35W
Permanent Datum GROUND LEVEL Elevation 3289
Log Measured From KELLY BUSHING 5' A.G.L.
Drilling Measured From KELLY BUSHING
Other Services
CDL/CNL
DIL
Elevation
K.B. 3294
D.F.
G.L. 3289

Date	11-2-11
Run Number	TW0
Depth Driller	4900
Depth Logger	4901
Bottom Logged Interval	4898
Top Log Interval	3700
Casing Driller	260
Casing Logger	260
Bit Size	7.875
Type Fluid in Hole	CHEMICAL MUD
Density / Viscosity	9.3 / 64
pH / Fluid Loss	10.0 / 11.2
Source of Sample	FLOWLINE
Rm @ Meas. Temp	0.45 @ 71F
Rmf @ Meas. Temp	0.34 @ 71F
Rmc @ Meas. Temp	0.54 @ 71F
Source of Rmf / Rmc	MEASURED
Rm @ BHT	.260 @ 124F
Time Circulation Stopped	3 HOURS
Time Logger on Bottom	12:30 A.M.
Maximum Recorded Temperature	124F
Equipment Number	860
Location	HAYS, KS.
Recorded By	RUPP
Witnessed By	BOB ELDER

<<< Fold Here >>>

All interpretations are opinions based on inferences from electrical or other measurements and we cannot and do not guarantee the accuracy or correctness of any interpretation, and we shall not, except in the case of gross or willful negligence on our part, be liable or responsible for any loss, costs, damages, or expenses incurred or sustained by anyone resulting from any interpretation made by any of our officers, agents or employees. These interpretations are also subject to our general terms and conditions set out in our current Price Schedule.

Comments

SUPERIOR WELL SERVICES
 785-628-6395
THANK YOU FOR YOUR BUSINESS
 DIRECTIONS: MONUMENT, 2W TO HIGHWAY #25, 2N, TO RD. "A", 6W, 1/2N, W INTO.



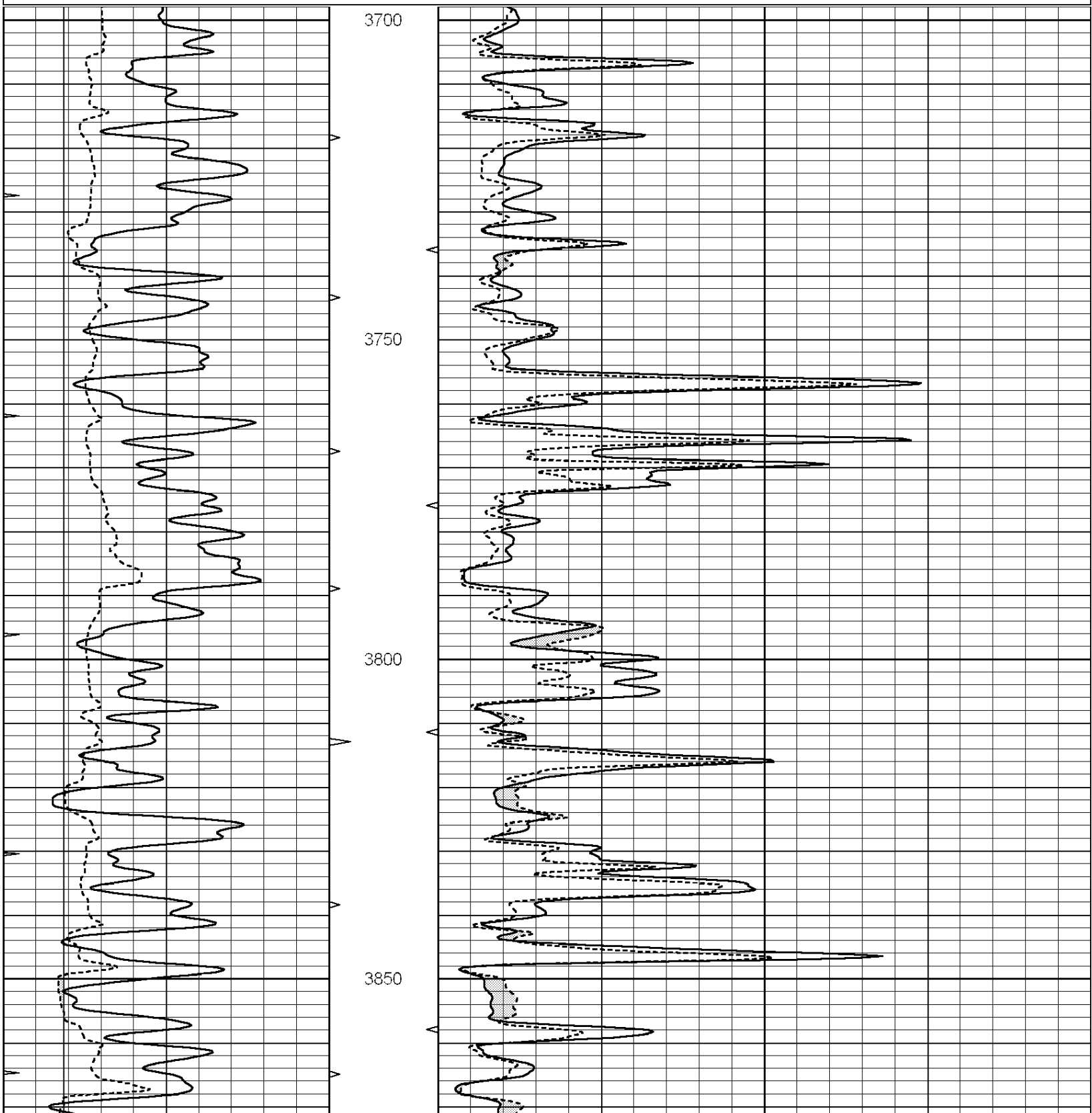
**SUPERIOR
Hays,
Kansas**

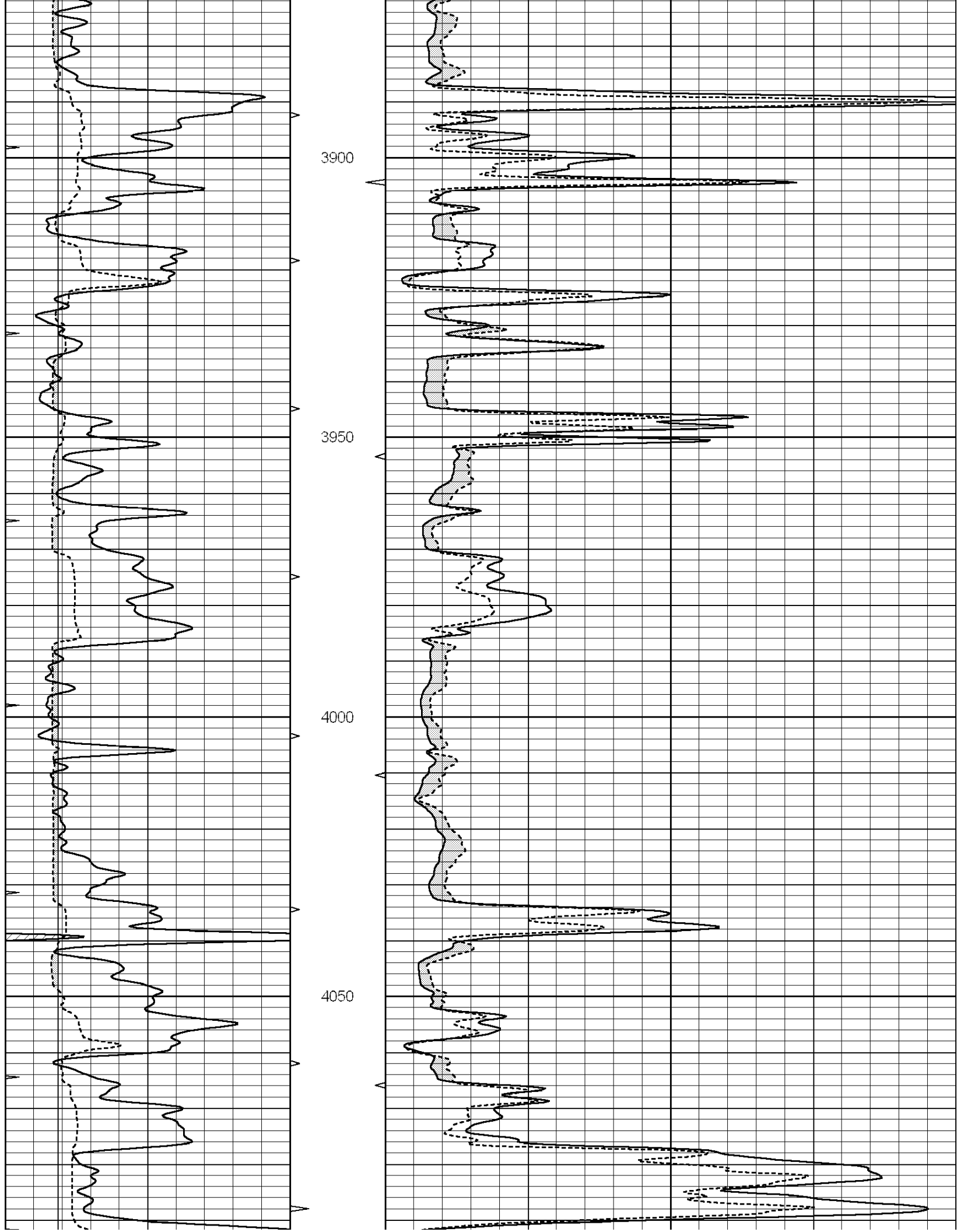
MAIN SECTION

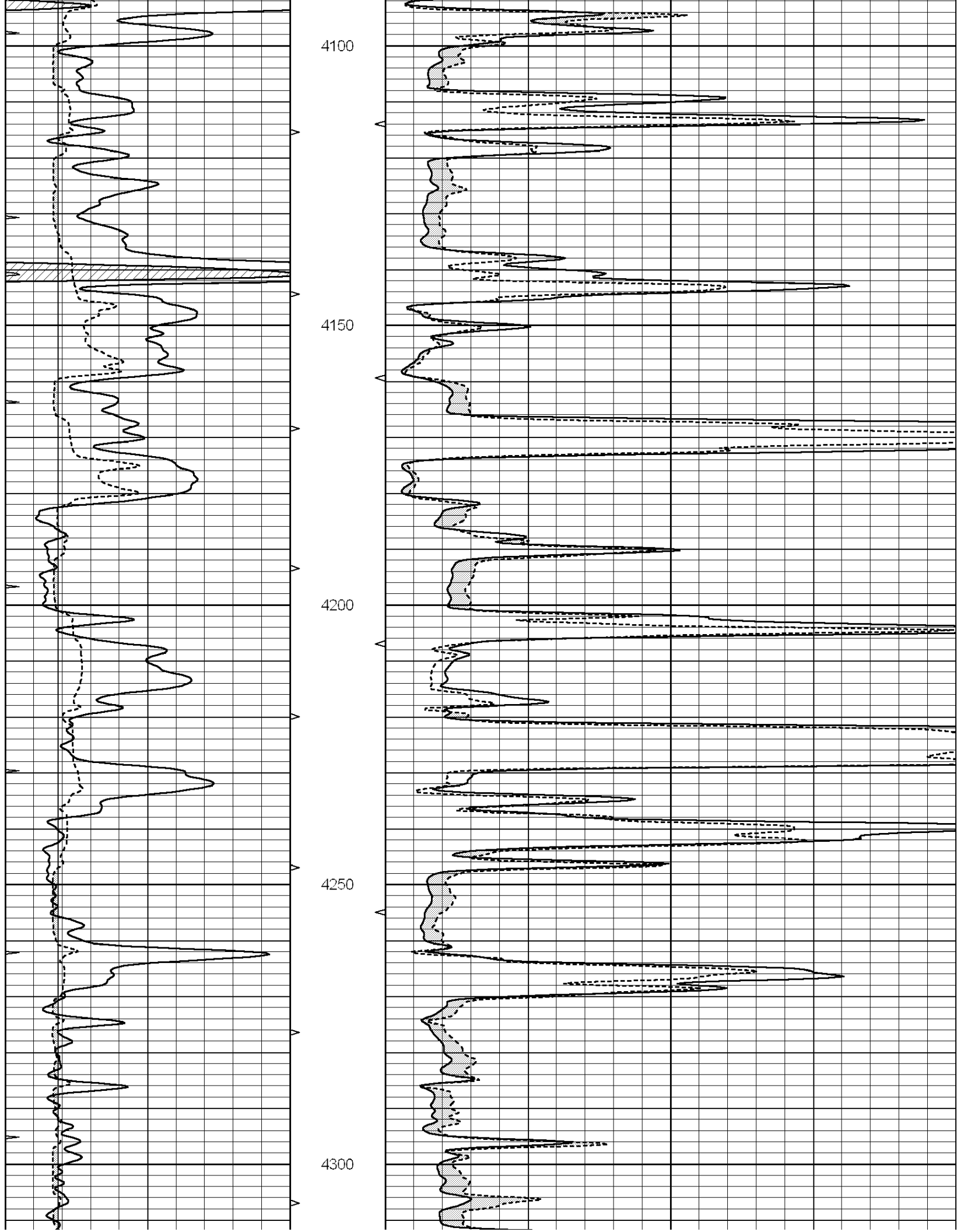
Database File: 007776ddn.db
Dataset Pathname: pass5.2
Presentation Format: micro
Dataset Creation: Wed Nov 02 03:58:26 2011
Charted by: Depth in Feet scaled 1:240

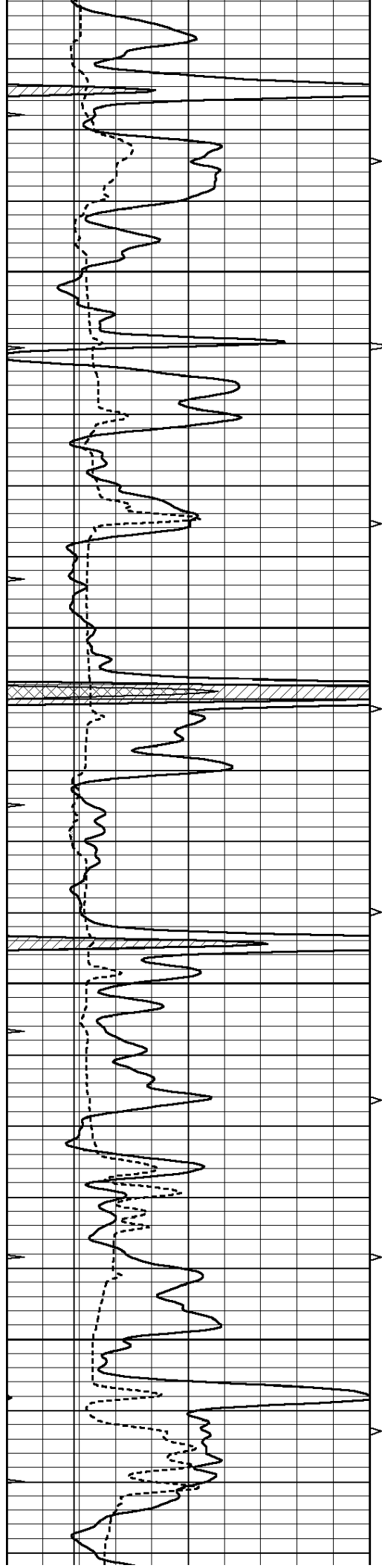
0	GAMMA RAY (GAPI)	150
6	MELCAL (in)	16
0	MINMK	20

0	MEL1.5 (Ohm-m)	40
0	MEL2.0 (Ohm-m)	40







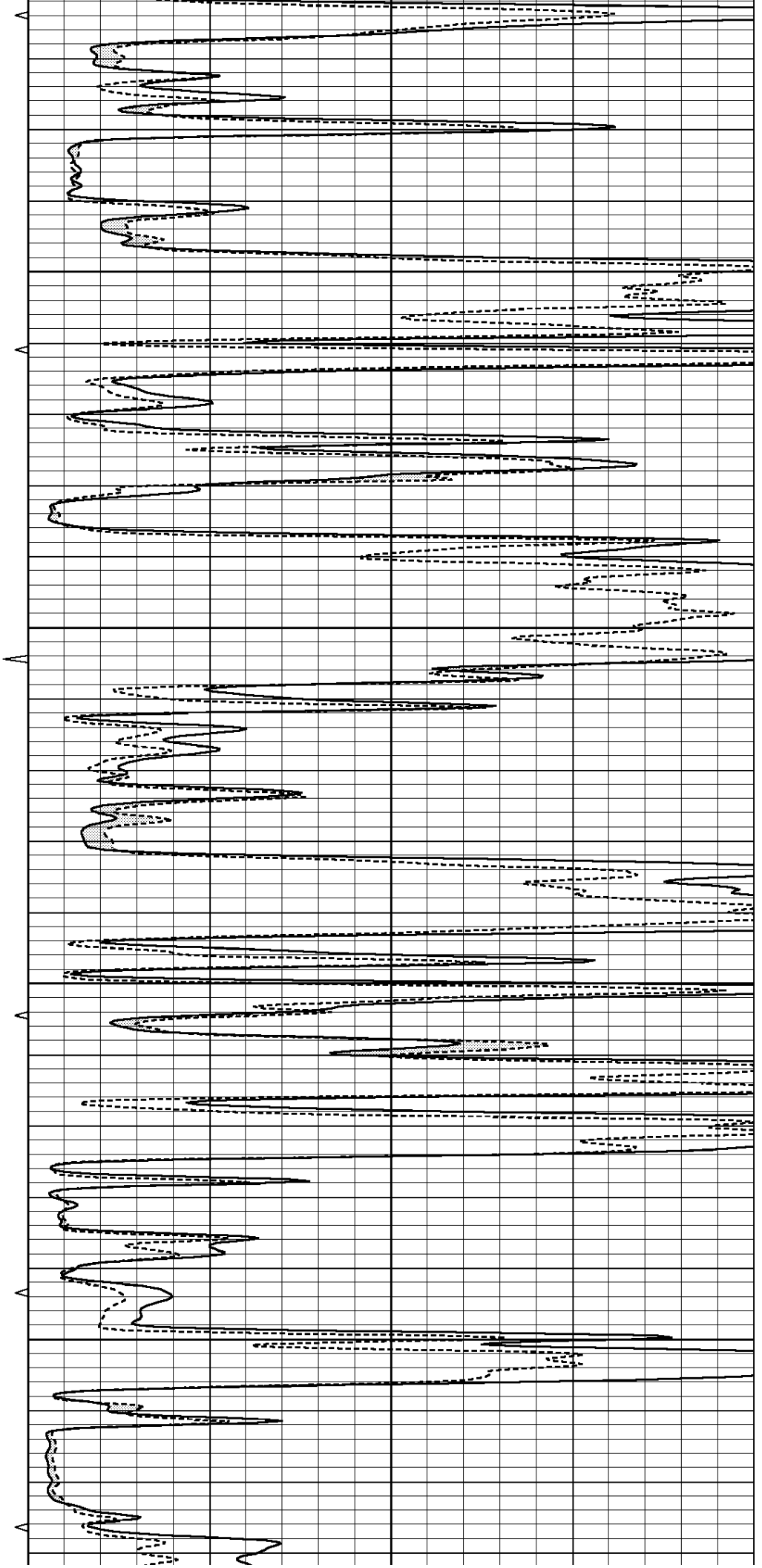


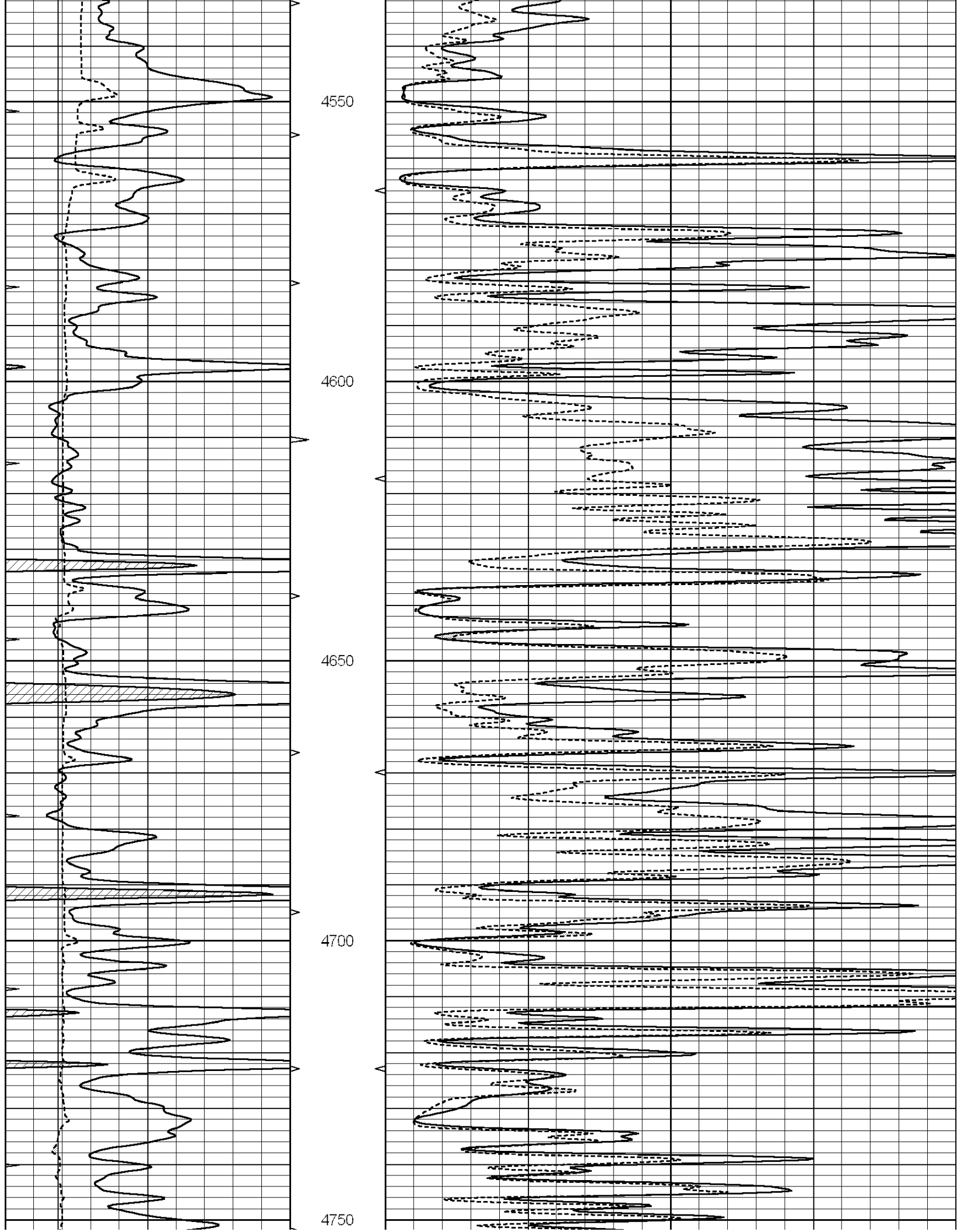
4350

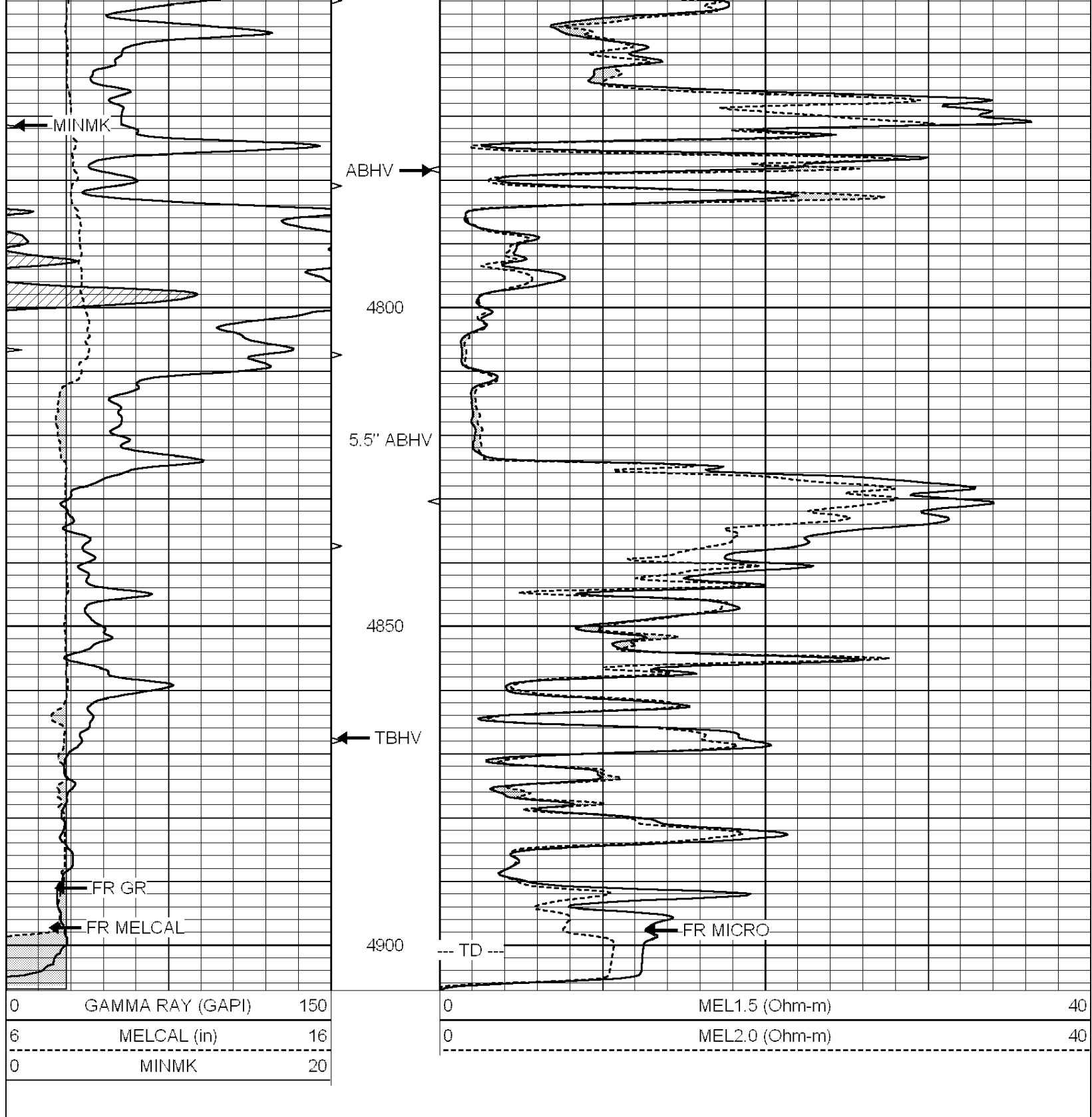
4400

4450

4500







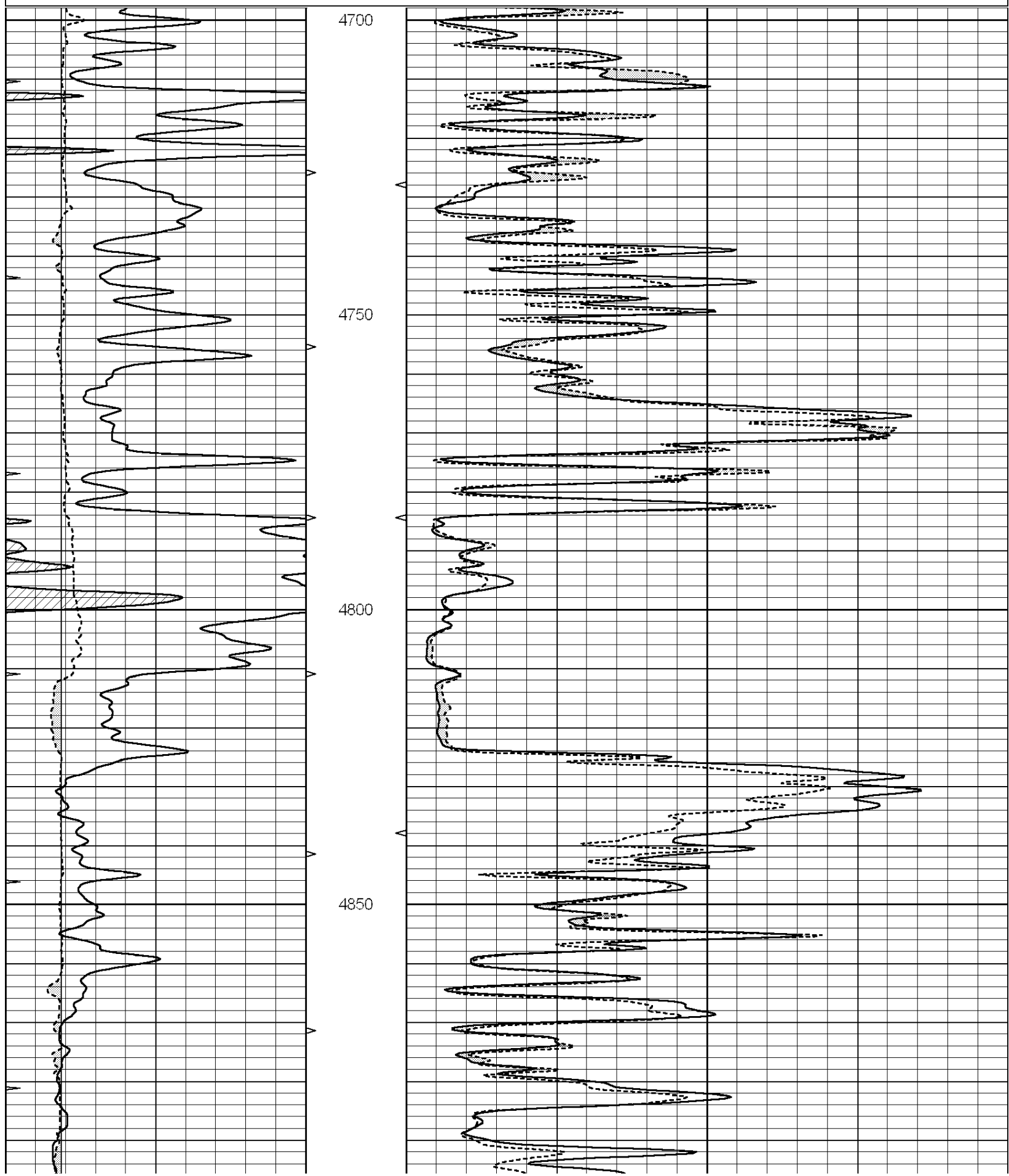
SUPERIOR
Hays,
Kansas

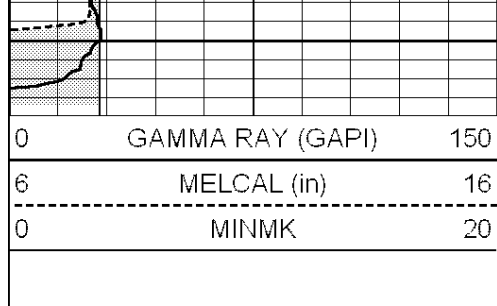
REPEAT SECTION

Database File: 007776ddn.db
 Dataset Pathname: pass4.2
 Presentation Format: micro
 Dataset Creation: Wed Nov 02 04:01:29 2011
 Charted by: Depth in Feet scaled 1:240

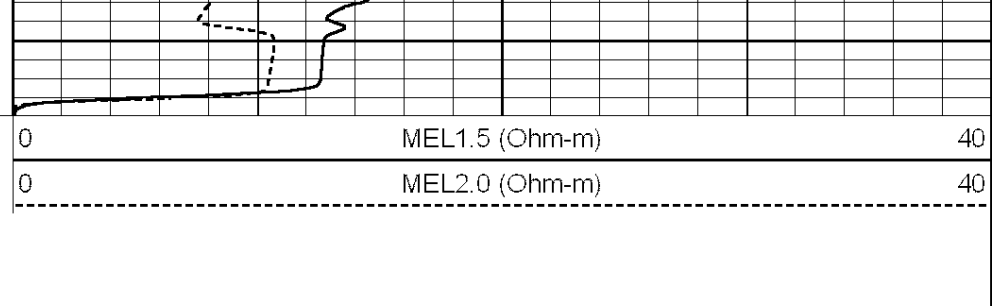
0	GAMMA RAY (GAPI)	150
6	MELCAL (in)	16
<hr style="border-top: 1px dashed black;"/>		
0	MINMK	20

0	MEL1.5 (Ohm-m)	40
0	MEL2.0 (Ohm-m)	40
<hr style="border-top: 1px dashed black;"/>		





4900



0	GAMMA RAY (GAPI)	150
6	MELCAL (in)	16
0	MINMK	20

0	MEL1.5 (Ohm-m)	40
0	MEL2.0 (Ohm-m)	40

Calibration Report

Database File: 007776ddn.db
 Dataset Pathname: pass5.2
 Dataset Creation: Wed Nov 02 03:58:26 2011

MICRO Calibration Report

Serial Number:	Micro1	
Tool Model:	ProbeL	
Performed:	Wed Nov 02 02:26:20 2011	
Caliper Calibration:	Gain=2.858	Offset=-1.741
References	Low Cal	High Cal
Readings	7.500	13.000
	3.233	5.157
1.5" Calibration:	Gain=34.000	Offset=0.000
References	Low Cal	High Cal
Readings	0.000	20.000
	0.003	0.844
2" Calibration:	Gain=30.000	Offset=-0.200
References	Low Cal	High Cal
Readings	0.000	20.000
	0.028	0.817

Gamma Ray Calibration Report

Serial Number:	GR5	
Tool Model:	OPEN	
Performed:	Wed Nov 02 02:26:16 2011	
Calibrator Value:	1.0	GAPI
Background Reading:	0.0	cps
Calibrator Reading:	1.0	cps
Sensitivity:	0.6500	GAPI/cps